

85-588-13850

9/86

DIAMOND DRILLING REPORT

MINING LEASES 22 AND 23

VALLEY COPPER MINE

KAMLOOPS MINING DIVISION

N.T.S. 92 1/7E

LAT. 50° 29' 30" N

LONG. 121° 03' 00" W

REPORT BY

K.M. NEWMAN, P. GEOL.

CHIEF MINE GEOLOGIST

AUGUST 29,

1985

**GEOLOGICAL BRANCH
ASSESSMENT REPORT**

13.850

TABLE OF CONTENTS

	<u>Page</u>
1.00 GENERAL STATEMENT	1
2.00 INTRODUCTION	1
2.10 Location and Access	1
2.20 History	1
3.00 DIAMOND DRILLING	1&2
STATEMENT OF EXPENDITURES	3
AFFIDAVIT	4
STATEMENT OF QUALIFICATIONS	5
DRILL LOGS	Attached
LOCATION MAP	Attached

1.00 GENERAL STATEMENT

The 1985 diamond drill program was confined to the west half of the ore body.

Drilling commenced June 2nd and was completed June 25th.

Total expenditures incurred during the program were \$66,863.67.

2.00 INTRODUCTION

2.10 Location and Access

The Valley Copper Orebody is located in the Highland Valley of B.C. It is 43 Km south east of Ashcroft and 54 Km south west of Kamloops. Access is via a newly up-graded paved highway from Ashcroft or Kamloops.

2.20 History

After a diamond drill program had outlined the Valley Mine orebody a decline was driven in 1969 to bulk sample the orebody and compare these samples with grades indicated by diamond drill core.

Pre-production commenced in 1982 and milling of the ore started in mid-January, 1983. The present rate of production is 25,500 tonnes per day.

3.00 DIAMOND DRILLING

The infill drilling program required nine NQ wire line drill holes, the total drilling amounted to 1,399.34 metres. These holes were required for geotechnical information and short term grade forecasting. It will be noted that the unit cost per metre drilled is on the low side when compared with the average contract price. The contractor was testing an Acker drill which was modified to do core drilling. The normal use for this type of drill is reverse circulation drilling. Better than 98 percent recoveries were obtained during the drilling program.

The host rock is the Bethsaida granodiorite which was the last phase of intrusive activity in the multi stage Guichon Creek batholith. Two separate dykes were intersected during the drilling program. Along with the two dykes, minor aplite and narrow lamprophyre dykes were also encountered.

The drilling was confined mainly to the fringe of the orebody. Sericitic and argillic alternation seldom exceeded the moderate degree, potassic alteration was generally weak.

(Diamond Drilling, con't)

The two dykes mentioned above have been named the Bethsaida Porphyry Dyke and the Decline Dyke. The composition of the Bethsaida dyke closely resembles the Bethsaida granodiorite. Anhedral to sub-hedral quartz, plagioclase and biotite phenocrysts in an aphanitic groundmass closely resembles the host rock. The middle of the dyke can become quite coarse except for the biotite phenocrysts which remain relatively small.

The Decline dyke has been traced from the decline to the west wall of the pit. It is greenish grey, aphanitic with euhedral to sub-hedral zoned plagioclase phenocrysts. The quartz phenocrysts are anhedral.

Both dykes are pre ore and the mineralization within the dykes varies according to the intensity of fracturing.

The mineralization encountered during drilling is typical of the orebody, i.e., there are at least three phases of quartz-sericite veining. Associated with this vein stockwork are bornite and chalcopyrite. A late phase quartz vein system strikes north-south, dips almost vertical and is later than the quartz, sericite stockwork. The late phase quartz veins have undergone multiple shearing. The resultant shear planes are infilled with molybdenite and chalcopyrite and or pyrite.

All proposed holes reached the target depth. The core is stored on the property.

EXHIBIT "A"

STATEMENT OF EXPENDITURES

DIAMOND DRILLING - MINING LEASES 22 & 23
CLAIMS: LTK 5, DF 1, DV 2 Fr., HH 11, HH 15 and HH 16 Fr.

Salaries

K.M. Newman, Chief Geologist and J. Armstrong,
graduate summer assistant, 1 month: \$ 7,468.75

Direct

D.W. Coates Enterprises Ltd.,
7583 Vantage Place
Delta, B.C. V4G 1A5 49,895.66

Access and Site Preparation

11 hrs x \$90.00 (D9L Dozer) 990.00
Core Boxes 982.26
Truck Rental (3/4 ton 4X4) 975.00
Assaying (Cu, CuO, Mo) 874 units X \$7.50 \$ 6,555.00
\$66,863.67

Signed: K. M. Newman
K. M. Newman, P. Geol.

IN THE MATTER OF THE

B.C. MINERAL ACT

AND

IN THE MATTER OF A DIAMOND DRILLING

PROGRAMME CARRIED OUT ON MINING LEASES
22 AND 23 AND IN PARTICULAR MINERAL CLAIMS LTK 5, DF1, DV 2 Fr., HH1
HH 15 AND HH 16 FR.

VALLEY COPPER MINE

KAMLOOPS MINING DIVISION

N.T.S. 92 1/7 E

AFFIDAVIT

I, K. M. Newman of the Village of Ashcroft, in the Province of British Columbia, make oath and say;

1. That I am employed as Chief Mine Geologist, by Valley Copper Mine, Cominco Ltd., and as such, have a personal knowledge of the facts to which I hereinafter depose:
2. That annexed hereto and marked as Exhibit "A" to this my Affidavit is a true copy of expenditures incurred on a Diamond Drilling program on Mining Lease 22 and Mining Lease 23.
3. That the said expenditures were incurred between the 1st date of June and the 29th day of June 1985 for the purpose of ore outline drilling on the above noted Mining Leases.

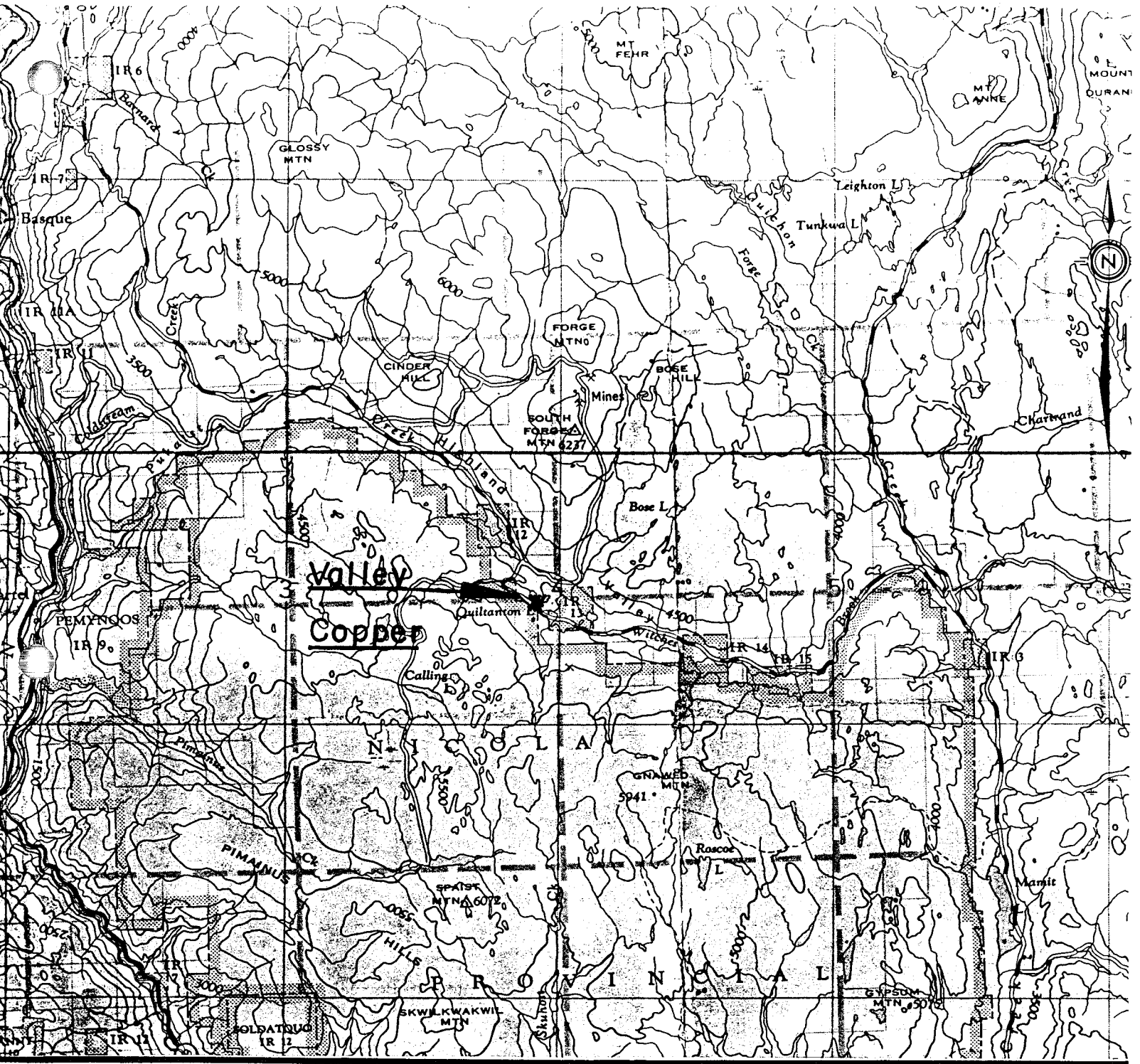
K. M. Newman
K. M. Newman, P. Geol.

STATEMENT OF QUALIFICATIONS

I, Kevin M. Newman, of the Village of Ashcroft, British Columbia hereby certify:

1. That I am a geologist residing at 604 Pine Drive, Ashcroft, British Columbia and that I am Chief Geologist with Cominco's Valley Copper Mine, P.O. Box 3070, Kamloops, British Columbia.
2. That I graduated with a B.Sc. degree, with major, in Geology in 1956 from St. Francis Xavier University, Antigonish, Nova Scotia.
3. That I am a registered Professional Geologist in the Association of Professional Engineers, Geologists and Geophysicists of Alberta.
4. That I have practiced the profession of geology since 1956 and have been employed by Cominco Ltd. since 1969.

K. M. Newman
K. M. Newman, P. Geol.



Projection
 Datum 1927
 Scale 500 feet
 Above Mean Sea Level

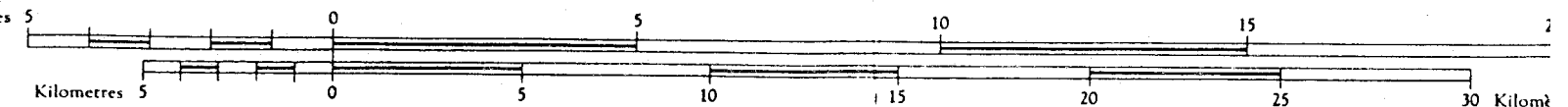
Projection Transverse
 Réseau géodésique nord-arr
 Équidistance des cour
 Élévations en pieds au-dessus du

ASHCROFT

BRITISH COLUMBIA NTS 9-1

WEST OF SIXTH MERIDIAN - OUEST DU SIXIÈME MÉRIDIEN

Scale 1:250,000 Échelle



* ID: D8501 *
* ID: D8501 *

DRILLHOLE HEADER

LATITUDE 29491.7
DEPARTURE 29732.4
ELEVATION 1283.84
DIP -45.0
AZIMUTH 90.0
LENGTH 166.73
OVERBURDEN 15.25

DRILLHOLE TYPE D
SELECTION CODE D
COLLAR CODE 1
LOGGER INITIALS KMN
DATE DRILLED 85
RATIONALIZE NO
REVISION DATE AUG 19/85
UNITS METRIC

UNITS/PARTING DATA

UNITS

PARTINGS

NAME	FROM	TYPE	CONF	TO	TYPE	CONF	FROM	TO
BGD	15.25	TOP	1	82.40	BOT	1		
LAMP	82.40	TOP	1	82.70	BOT	1		
BGD	82.70	TOP	1	85.20	BOT	1		
BP	85.20	TOP	1	117.90	BOT	1		
BGD	117.90	TOP	1	123.65	BOT	1		
BP	123.65	TOP	1	129.25	BOT	1		
BGD	129.25	TOP	1	166.73	BOT	1		

DRILLHOLE LISTING REPORT - VALLEY

* ID: D8501 *

SAMPLE DATA

* ID: D8501 *

***** NOTE: -99 INDICATES A MISSING VALUE. *****

SAMPLE FROM	SAMPLE TO	ROCK TYPE	CU	MO	OXID
15.25	18.25	GRANODIOR	0.30	0.0040	0.00
18.25	21.25	GRANODIOR	0.16	0.0040	0.00
21.25	24.25	GRANODIOR	0.28	0.0060	0.00
24.25	27.25	GRANODIOR	0.20	0.0030	0.00
27.25	30.25	GRANODIOR	0.24	0.0100	0.00
30.25	33.25	GRANODIOR	0.25	0.0200	0.00
33.25	36.25	GRANODIOR	0.32	0.0500	0.00
36.25	39.25	GRANODIOR	0.22	0.0200	0.00
39.25	42.25	GRANODIOR	0.33	0.0300	0.00
42.25	45.25	GRANODIOR	0.27	0.0130	0.00
45.25	48.25	GRANODIOR	0.20	0.0200	0.00
48.25	51.25	GRANODIOR	0.21	0.0120	0.00
51.25	54.25	GRANODIOR	0.32	0.0180	0.00
54.25	57.25	GRANODIOR	0.35	0.0100	0.00
57.25	60.25	GRANODIOR	0.26	0.0100	0.00
60.25	63.25	GRANODIOR	0.31	0.0290	0.00
63.25	66.25	GRANODIOR	0.19	0.0080	0.00
66.25	69.25	GRANODIOR	0.34	0.0210	0.00
69.25	72.25	GRANODIOR	2.00	0.0060	0.00
72.25	75.25	GRANODIOR	0.13	0.0030	0.00
75.25	78.25	GRANODIOR	0.46	0.0140	0.00
78.25	81.25	GRANODIOR	0.39	0.0070	0.00
81.25	84.25	GRANODIOR	0.45	0.0020	0.00
84.25	87.25	GRANODIOR	0.30	0.0030	0.00
87.25	90.25	BETH PORP	0.29	0.0020	0.00
90.25	93.25	BETH PORP	0.22	0.0010	0.00
93.25	96.25	BETH PORP	0.26	0.0020	0.00
96.25	99.25	BETH PORP	0.31	0.0010	0.00
99.25	102.25	BETH PORP	0.19	0.0010	0.00
102.25	105.25	BETH PORP	0.51	0.0070	0.00
105.25	108.25	BETH PORP	0.31	0.0050	0.00
108.25	111.25	BETH PORP	0.28	0.0020	0.00
111.25	114.25	BETH PORP	0.19	0.0020	0.00
114.25	117.25	BETH PORP	0.29	0.0030	0.00
117.25	120.25	GRANODIOR	0.45	0.0150	0.00
120.25	123.25	GRANODIOR	0.41	0.0040	0.00
123.25	126.25	BETH PORP	0.28	0.0030	0.00
126.25	129.25	BETH PORP	0.17	0.0020	0.00
129.25	132.25	GRANODIOR	0.22	0.0010	0.00
132.25	135.25	GRANODIOR	0.24	0.0130	0.00

 * ID: D8501 *
 * ID: D8501 *

SAMPLE DATA

***** NOTE: -99 INDICATES A MISSING VALUE. *****

SAMPLE FROM	SAMPLE TO	ROCK TYPE	CU	MO	OXID
135.25	138.25	GRANODIOR	0.10	0.0040	0.00
138.25	141.25	GRANODIOR	0.18	0.0040	0.00
141.25	144.25	GRANODIOR	0.25	0.0040	0.00
144.25	147.25	GRANODIOR	0.40	0.0040	0.00
147.25	150.25	GRANODIOR	0.55	0.0020	0.00
150.25	153.25	GRANODIOR	0.19	0.0020	0.00
153.25	156.25	GRANODIOR	0.56	0.0020	0.00
156.25	159.25	GRANODIOR	0.77	0.0580	0.00
159.25	162.25	GRANODIOR	0.38	0.0100	0.00
162.25	165.25	GRANODIOR	0.57	0.0040	0.00
165.25	166.73	GRANODIOR	0.30	0.0040	0.00

* ID: D8502 *
* ID: D8502 *

DRILLHOLE HEADER

LATITUDE 29390.4
DEPARTURE 29653.5
ELEVATION 1310.24
DIP -45.0
AZIMUTH 90.0
LENGTH 212.45
OVERBURDEN 9.20

DRILLHOLE TYPE D
SELECTION CODE D
COLLAR CODE 1
LOGGER INITIALS KMN
DATE DRILLED 85
RATIONALIZE NO
REVISION DATE AUG 19/85
UNITS METRIC

UNITS/PARTING DATA

UNITS

PARTINGS

NAME	FROM	TYPE	CONF	TO	TYPE	CONF	FROM	TO
FEO	9.20	TOP	1	18.00	BOT	1		
BGD	18.00	TOP	1	28.05	BOT	1		
BP	28.05	TOP	1	34.20	BOT	1		
BGD	34.20	TOP	1	43.80	BOT	1		
LAMP	43.80	TOP	1	44.75	BOT	1		
BGD	44.75	TOP	1	57.00	BOT	1		
BP	162.45	TOP	1	197.20	BOT	1		
BGD	197.20	TOP	1	212.45	BOT	1		

DATE: AUG 19/85

PAGE 2

DRILLHOLE LISTING REPORT - VALLEY

* ID: D8502 *

SAMPLE DATA

* ID: D8502 *

***** NOTE: -99 INDICATES A MISSING VALUE. *****

SAMPLE FROM	SAMPLE TO	ROCK TYPE	CU	MO	OXID
9.20	12.20	GRANODIOR	0.04	0.0050	0.00
12.20	15.20	GRANODIOR	0.05	0.0040	0.00
15.20	18.20	GRANODIOR	0.04	0.0030	0.00
18.20	21.20	GRANODIOR	0.15	0.0080	0.00
21.20	24.20	GRANODIOR	0.18	0.0090	0.00
24.20	27.20	GRANODIOR	0.07	0.0040	0.00
27.20	30.20	BETH PORP	0.45	0.0800	0.00
30.20	33.20	BETH PORP	0.12	0.0200	0.00
33.20	36.20	GRANODIOR	0.16	0.0050	0.00
36.20	39.20	GRANODIOR	0.19	0.0100	0.00
39.20	42.20	GRANODIOR	0.19	0.0100	0.00
42.20	45.20	GRANODIOR	0.07	0.0030	0.00
45.20	48.20	GRANODIOR	0.25	0.0030	0.00
48.20	51.20	GRANODIOR	0.19	0.0090	0.00
51.20	54.20	GRANODIOR	0.10	0.0030	0.00
54.20	57.20	GRANODIOR	0.11	0.0020	0.00
57.20	60.20	GRANODIOR	0.07	0.0120	0.00
60.20	63.20	GRANODIOR	0.06	0.0000	0.00
63.20	66.20	GRANODIOR	0.06	0.0000	0.00
66.20	69.20	GRANODIOR	0.06	0.0000	0.00
69.20	72.20	GRANODIOR	0.26	0.0060	0.00
72.20	75.20	GRANODIOR	0.13	0.0000	0.00
75.20	78.20	GRANODIOR	0.30	0.0120	0.00
78.20	81.20	GRANODIOR	0.43	0.0090	0.00
81.20	84.20	GRANODIOR	0.37	0.0070	0.00
84.20	87.20	GRANODIOR	0.15	0.0000	0.00
87.20	90.20	GRANODIOR	0.10	0.0000	0.00
90.20	93.20	GRANODIOR	0.16	0.0000	0.00
93.20	96.20	GRANODIOR	0.14	0.0000	0.00
96.20	99.20	GRANODIOR	0.35	0.0260	0.00
99.20	102.20	GRANODIOR	0.33	0.0090	0.00
102.20	105.20	GRANODIOR	0.25	0.0090	0.00
105.20	108.20	GRANODIOR	0.31	0.0200	0.00
108.20	111.20	GRANODIOR	0.19	0.0000	0.00
111.20	114.20	GRANODIOR	0.28	0.0050	0.00
114.20	117.20	GRANODIOR	0.30	0.0020	0.00
117.20	120.20	GRANODIOR	0.18	0.0000	0.00
120.20	123.20	GRANODIOR	0.28	0.0030	0.00
123.20	126.20	GRANODIOR	0.21	0.0000	0.00
126.20	129.20	GRANODIOR	0.16	0.0000	0.00

 * ID: D8502 *
 * ID: D8502 *

SAMPLE DATA

***** NOTE: -99 INDICATES A MISSING VALUE. *****

SAMPLE FROM	SAMPLE TO	ROCK TYPE	CU	MO	OXID
129.20	132.20	GRANODIOR	0.28	0.0260	0.00
132.20	135.20	GRANODIOR	0.13	0.0000	0.00
135.20	138.20	GRANODIOR	0.19	0.0000	0.00
138.20	141.20	GRANODIOR	0.45	0.0010	0.00
141.20	144.20	GRANODIOR	0.49	0.0020	0.00
144.20	147.20	GRANODIOR	0.57	0.0090	0.00
147.20	150.20	GRANODIOR	0.59	0.0020	0.00
150.20	153.20	GRANODIOR	0.51	0.0030	0.00
153.20	156.20	GRANODIOR	0.45	0.0050	0.00
156.20	159.20	GRANODIOR	0.08	0.0000	0.00
159.20	162.20	BETH PORP	0.14	0.0000	0.00
162.20	165.20	BETH PORP	0.32	0.0140	0.00
165.20	168.20	BETH PORP	0.22	0.0000	0.00
168.20	171.20	BETH PORP	0.23	0.0000	0.00
171.20	174.20	BETH PORP	0.20	0.0000	0.00
174.20	177.20	BETH PORP	0.30	0.0190	0.00
177.20	180.20	BETH PORP	0.17	0.0000	0.00
180.20	183.20	BETH PORP	0.16	0.0000	0.00
183.20	186.20	BETH PORP	0.21	0.0000	0.00
186.20	189.20	BETH PORP	0.12	0.0000	0.00
189.20	192.20	BETH PORP	0.17	0.0000	0.00
192.20	195.20	BETH PORP	0.18	0.0000	0.00
195.20	198.20	BETH PORP	0.22	0.0000	0.00
198.20	201.20	GRANODIOR	0.09	0.0000	0.00
201.20	204.20	GRANODIOR	0.39	0.0100	0.00
204.20	207.20	GRANODIOR	0.45	0.0030	0.00
207.20	210.20	GRANODIOR	0.37	0.0010	0.00
210.20	212.45	GRANODIOR	0.45	0.0020	0.00

* ID: D8503 *
* ID: D8503 *

DRILLHOLE HEADER

LATITUDE 29304.2
DEPARTURE 29649.0
ELEVATION 1318.10
DIP -45.0
AZIMUTH 95.3
LENGTH 150.88
OVERBURDEN 4.60

DRILLHOLE TYPE D
SELECTION CODE D
COLLAR CODE 1
LOGGER INITIALS KMN
DATE DRILLED 85
RATIONALIZE NO
REVISION DATE AUG 19/85
UNITS METRIC

UNITS/PARTING DATA

UNITS

PARTINGS

NAME	FROM	TYPE	CONF	TO	TYPE	CONF	FROM	TO
BGD	4.60	TOP	1	12.00	BOT	1		
LAMP	12.00	TOP	1	14.30	BOT	1		
BGD	14.30	TOP	1	47.40	BOT	1		
BP	47.40	TOP	1	53.95	BOT	1		
BGD	53.95	TOP	1	86.56	BOT	1		
FX	80.77	TOP	1	89.20	BOT	1		
BP	86.56	TOP	1	107.40	BOT	1		
BGD	107.40	TOP	1	150.88	BOT	1		

DRILLHOLE LISTING REPORT - VALLEY

* ID: D8503 *
* ID: D8503 *

SAMPLE DATA

***** NOTE: -99 INDICATES A MISSING VALUE. *****

SAMPLE FROM	SAMPLE TO	ROCK TYPE	CU	MO	OXID
4.60	7.60	GRANODIOR	0.18	0.0060	0.01
7.60	10.60	GRANODIOR	0.05	0.0040	0.01
10.60	13.60	GRANODIOR	0.02	0.0030	0.01
13.60	16.60	GRANODIOR	0.07	0.0230	0.01
16.60	19.60	GRANODIOR	0.04	0.0040	0.00
19.60	22.60	GRANODIOR	0.02	0.0020	0.00
22.60	25.60	GRANODIOR	0.02	0.0010	0.00
25.60	28.60	GRANODIOR	0.08	0.0020	0.00
28.60	31.60	GRANODIOR	0.18	0.0340	0.00
31.60	34.60	GRANODIOR	0.06	0.0020	0.00
34.60	37.60	GRANODIOR	0.09	0.0030	0.00
37.60	40.60	GRANODIOR	0.08	0.0080	0.00
40.60	43.60	GRANODIOR	0.02	0.0020	0.00
43.60	46.60	GRANODIOR	0.16	0.0030	0.00
46.60	49.60	GRANODIOR	0.04	0.0030	0.00
49.60	52.60	GRANODIOR	0.03	0.0040	0.00
52.60	55.60	GRANODIOR	0.09	0.0140	0.00
55.60	58.60	GRANODIOR	0.06	0.0030	0.00
58.60	61.60	GRANODIOR	0.10	0.0070	0.00
61.60	64.60	GRANODIOR	0.10	0.0060	0.00
64.60	67.60	GRANODIOR	0.05	0.0020	0.00
67.60	70.60	GRANODIOR	0.15	0.0100	0.00
70.60	73.60	GRANODIOR	0.13	0.0180	0.00
73.60	76.60	GRANODIOR	0.14	0.0230	0.00
76.60	79.60	GRANODIOR	0.15	0.0050	0.00
79.60	82.60	GRANODIOR	0.36	0.0100	0.00
82.60	85.60	GRANODIOR	0.25	0.0060	0.00
85.60	88.60	GRANODIOR	0.36	0.0290	0.00
88.60	91.60	GRANODIOR	0.16	0.0020	0.00
91.60	94.60	GRANODIOR	0.14	0.0020	0.00
94.60	97.60	GRANODIOR	0.18	0.0030	0.00
97.60	100.60	GRANODIOR	0.10	0.0020	0.00
100.60	103.60	GRANODIOR	0.11	0.0030	0.00
103.60	106.60	GRANODIOR	0.19	0.0050	0.00
106.60	109.60	GRANODIOR	0.32	0.0040	0.00
109.60	112.60	GRANODIOR	0.19	0.0030	0.00
112.60	115.60	GRANODIOR	0.20	0.0110	0.00
115.60	118.60	GRANODIOR	0.38	0.0050	0.00
118.60	121.60	GRANODIOR	0.35	0.0050	0.00
121.60	124.60	GRANODIOR	0.25	0.0070	0.00

* ID: D8503 *
* ID: D8503 *

SAMPLE DATA

***** NOTE: -99 INDICATES A MISSING VALUE. *****

SAMPLE FROM	SAMPLE TO	ROCK TYPE	CU	MO	OXID
124.60	127.60	GRANODIOR	0.37	0.0070	0.00
127.60	130.60	GRANODIOR	0.21	0.0010	0.00
130.60	133.60	GRANODIOR	0.27	0.0010	0.00
133.60	136.60	GRANODIOR	0.30	0.0050	0.00
136.60	139.60	GRANODIOR	0.13	0.0040	0.00
139.60	142.60	GRANODIOR	0.37	0.0030	0.00
142.60	145.60	GRANODIOR	0.64	0.0030	0.00
145.60	148.60	GRANODIOR	0.31	0.0080	0.00
148.60	150.88	GRANODIOR	0.19	0.0450	0.00

* ID: D8504 *
* ID: D8504 *

DRILLHOLE HEADER

LATITUDE 29178.1
DEPARTURE 29774.1
ELEVATION 1309.14
DIP -45.0
AZIMUTH 90.0
LENGTH 142.31
OVERBURDEN 6.10

DRILLHOLE TYPE D
SELECTION CODE D
COLLAR CODE 1
LOGGER INITIALS KMN
DATE DRILLED 85
RATIONALIZE NO
REVISION DATE AUG 19/85
UNITS METRIC

UNITS/PARTING DATA

UNITS

PARTINGS

NAME	FROM	TYPE	CONF	TO	TYPE	CONF	FROM	TO
BGD	6.10	TOP	1	27.10	BOT	1		
APL	27.10	TOP	1	27.20	BOT	1		
BGD	27.20	TOP	1	30.10	BOT	1		
FX	30.10	TOP	1	35.10	BOT	1		
BGD	35.10	TOP	1	64.35	BOT	1		
FX	64.35	TOP	1	65.30	BOT	1		
BGD	65.30	TOP	1	142.31	BOT	1		

 * ID: D8504 *
 * ID: D8504 *

SAMPLE DATA

***** NOTE: -99 INDICATES A MISSING VALUE. *****

SAMPLE FROM	SAMPLE TO	ROCK TYPE	CU	MO	OXID
6.10	9.10	GRANODIOR	0.33	0.1750	0.00
9.10	12.10	GRANODIOR	0.22	0.0130	0.00
12.10	15.10	GRANODIOR	0.53	0.0060	0.00
15.10	18.10	GRANODIOR	0.20	0.0030	0.00
18.10	21.10	GRANODIOR	0.52	0.0350	0.00
21.10	24.10	GRANODIOR	0.48	0.0330	0.00
24.10	27.10	GRANODIOR	0.34	0.0160	0.00
27.10	30.10	GRANODIOR	0.40	0.0440	0.00
30.10	33.10	GRANODIOR	0.50	0.0230	0.00
33.10	36.10	GRANODIOR	0.68	0.0080	0.00
36.10	39.10	GRANODIOR	1.46	0.0050	0.00
39.10	42.10	GRANODIOR	1.42	0.0020	0.00
42.10	45.10	GRANODIOR	0.38	0.0010	0.00
45.10	48.10	GRANODIOR	1.30	0.0070	0.00
48.10	51.10	GRANODIOR	0.55	0.0020	0.00
51.10	54.10	GRANODIOR	0.40	0.0040	0.00
54.10	57.10	GRANODIOR	0.73	0.0040	0.00
57.10	60.10	GRANODIOR	0.83	0.0040	0.00
60.10	63.10	GRANODIOR	0.52	0.0040	0.00
63.10	66.10	GRANODIOR	0.35	0.0020	0.00
66.10	69.10	GRANODIOR	0.27	0.0080	0.00
69.10	72.10	GRANODIOR	0.45	0.0030	0.00
72.10	75.10	GRANODIOR	0.34	0.0020	0.00
75.10	78.10	GRANODIOR	0.40	0.0060	0.00
78.10	81.10	GRANODIOR	0.35	0.0020	0.00
81.10	84.10	GRANODIOR	0.25	0.0080	0.00
84.10	87.10	GRANODIOR	0.27	0.0040	0.00
87.10	90.10	GRANODIOR	0.27	0.0010	0.00
90.10	93.10	GRANODIOR	0.26	0.0040	0.00
93.10	96.10	GRANODIOR	0.30	0.0030	0.00
96.10	99.10	GRANODIOR	0.98	0.0060	0.00
99.10	102.10	GRANODIOR	0.39	0.0020	0.00
102.10	105.10	GRANODIOR	0.46	0.0130	0.00
105.10	108.10	GRANODIOR	0.61	0.0050	0.00
108.10	111.10	GRANODIOR	0.22	0.0030	0.00
111.10	114.10	GRANODIOR	0.23	0.0030	0.00
114.10	117.10	GRANODIOR	0.27	0.0050	0.00
117.10	120.10	GRANODIOR	0.54	0.0030	0.00
120.10	123.10	GRANODIOR	0.51	0.0080	0.00
123.10	126.10	GRANODIOR	0.27	0.0030	0.00

* ID: D8504 *
* ID: D8504 *

SAMPLE DATA

***** NOTE: -99 INDICATES A MISSING VALUE. *****

SAMPLE FROM	SAMPLE TO	ROCK TYPE	CU	MO	OXID
126.10	129.10	GRANODIOR	0.26	0.0030	0.00
129.10	132.10	GRANODIOR	0.63	0.0050	0.00
132.10	135.10	GRANODIOR	0.64	0.0100	0.00
135.10	138.10	GRANODIOR	1.03	0.0050	0.00
138.10	141.10	GRANODIOR	0.35	0.0030	0.00
141.10	142.31	GRANODIOR	0.29	0.0050	0.00

* ID: D8505 *
* ID: D8505 *

DRILLHOLE HEADER

LATITUDE 28826.3
DEPARTURE 30186.0
ELEVATION 1292.83
DIP -45.0
AZIMUTH 45.0
LENGTH 221.59
OVERBURDEN 20.42

DRILLHOLE TYPE D
SELECTION CODE D
COLLAR CODE 1
LOGGER INITIALS KMN
DATE DRILLED 85
RATIONALIZE NO
REVISION DATE AUG 19/85
UNITS METRIC

UNITS/PARTING DATA

UNITS

PARTINGS

NAME	FROM	TYPE	CONF	TO	TYPE	CONF	FROM	TO
BGD	20.42	TOP	1	173.50	BOT	1		
FX	21.20	TOP	1	26.75	BOT	1		
FX	41.76	TOP	1	52.20	BOT	1		
DP	173.50	TOP	1	183.05	BOT	1		
BGD	183.05	TOP	1	206.50	BOT	1		

* ID: D8505 *
* ID: D8505 *

SAMPLE DATA

***** NOTE: -99 INDICATES A MISSING VALUE. *****

SAMPLE FROM	SAMPLE TO	ROCK TYPE	CU	MO	OXID
20.42	23.42	GRANODIOR	0.66	0.0540	0.00
23.42	26.42	GRANODIOR	0.76	0.0270	0.00
26.42	29.42	GRANODIOR	0.41	0.0280	0.00
29.42	32.42	GRANODIOR	0.30	0.0030	0.00
32.42	35.42	GRANODIOR	0.26	0.0020	0.00
35.42	38.42	GRANODIOR	0.42	0.0050	0.00
38.42	41.42	GRANODIOR	0.83	0.1730	0.00
41.42	44.42	GRANODIOR	0.39	0.0500	0.00
44.42	47.42	GRANODIOR	0.34	0.0030	0.00
47.42	50.42	GRANODIOR	0.40	0.0050	0.00
50.42	53.42	GRANODIOR	0.42	0.0110	0.00
53.42	56.42	GRANODIOR	0.42	0.0020	0.00
56.42	59.42	GRANODIOR	0.33	0.0030	0.00
59.42	62.42	GRANODIOR	0.30	0.0140	0.00
62.42	65.42	GRANODIOR	0.62	0.0160	0.00
65.42	68.42	GRANODIOR	0.80	0.0070	0.00
68.42	71.42	GRANODIOR	0.37	0.0060	0.00
71.42	74.42	GRANODIOR	0.30	0.0110	0.00
74.42	77.42	GRANODIOR	0.38	0.0020	0.00
77.42	80.42	GRANODIOR	0.38	0.0070	0.00
80.42	83.42	GRANODIOR	0.16	0.0030	0.00
83.42	86.42	GRANODIOR	0.78	0.1500	0.00
86.42	89.42	GRANODIOR	0.28	0.0030	0.00
89.42	92.42	GRANODIOR	0.35	0.0090	0.00
92.42	95.42	GRANODIOR	0.22	0.0010	0.00
95.42	98.42	GRANODIOR	0.36	0.0040	0.00
98.42	101.42	GRANODIOR	0.44	0.0080	0.00
101.42	104.42	GRANODIOR	0.58	0.0380	0.00
104.42	107.42	GRANODIOR	0.22	0.0040	0.00
107.42	110.42	GRANODIOR	0.27	0.0050	0.00
110.42	113.42	GRANODIOR	0.43	0.0050	0.00
113.42	116.42	GRANODIOR	0.62	0.0030	0.00
116.42	119.42	GRANODIOR	0.39	0.0020	0.00
119.42	122.42	GRANODIOR	0.44	0.0010	0.00
122.42	125.42	GRANODIOR	0.37	0.0020	0.00
125.42	128.42	GRANODIOR	0.40	0.0030	0.00
128.42	131.42	GRANODIOR	0.26	0.0030	0.00
131.42	134.42	GRANODIOR	0.36	0.0040	0.00
134.42	137.42	GRANODIOR	0.33	0.0010	0.00
137.42	140.42	GRANODIOR	0.34	0.0030	0.00

 * ID: D8505 *
 * ID: D8505 *

SAMPLE DATA

***** NOTE: -99 INDICATES A MISSING VALUE. *****

SAMPLE FROM	SAMPLE TO	ROCK TYPE	CU	MO	OXID
140.42	143.42	GRANODIOR	0.56	0.0010	0.00
143.42	145.42	GRANODIOR	0.69	0.0010	0.00
145.42	148.42	GRANODIOR	0.62	0.0030	0.00
148.42	151.42	GRANODIOR	0.47	0.0010	0.00
151.42	154.42	GRANODIOR	0.65	0.0010	0.00
154.42	157.42	GRANODIOR	0.58	0.0020	0.00
157.42	160.42	GRANODIOR	0.76	0.0100	0.00
160.42	163.42	GRANODIOR	0.75	0.0050	0.00
163.42	166.42	GRANODIOR	0.33	0.0030	0.00
166.42	169.42	GRANODIOR	0.74	0.0530	0.00
169.42	172.42	GRANODIOR	0.44	0.0030	0.00
172.42	175.42	DEC PORPH	0.48	0.0010	0.00
175.42	178.42	DEC PORPH	0.57	0.0010	0.00
178.42	181.42	DEC PORPH	0.81	0.0010	0.00
181.42	184.42	DEC PORPH	0.65	0.0010	0.00
184.42	187.42	GRANODIOR	0.62	0.0010	0.00
187.42	190.42	GRANODIOR	0.50	0.0040	0.00
190.42	193.42	GRANODIOR	0.49	0.0010	0.00
193.42	196.42	GRANODIOR	0.69	0.0010	0.00
196.42	199.42	GRANODIOR	0.41	0.0020	0.00
199.42	202.42	GRANODIOR	0.64	0.0010	0.00
202.42	205.42	GRANODIOR	0.67	0.0020	0.00
205.42	208.42	GRANODIOR	0.55	0.0030	0.00
208.42	211.42	GRANODIOR	0.67	0.0010	0.00
211.42	214.42	GRANODIOR	0.48	0.0010	0.00
214.42	217.42	GRANODIOR	0.50	0.0010	0.00
217.42	220.42	GRANODIOR	0.56	0.0010	0.00
220.42	221.59	GRANODIOR	0.68	0.0010	0.00

DRILLHOLE LISTING REPORT - VALLEY

* ID: D8506 *
* ID: D8506 *

DRILLHOLE HEADER

LATITUDE 28971.7
DEPARTURE 30431.8
ELEVATION 1269.63
DIP -90.0
AZIMUTH 0.0
LENGTH 152.10
OVERBURDEN 33.60

DRILLHOLE TYPE D
SELECTION CODE D
COLLAR CODE 1
LOGGER INITIALS KMN
DATE DRILLED 85
RATIONALIZE NO
REVISION DATE AUG 19/85
UNITS METRIC

UNITS/PARTING DATA

UNITS

PARTINGS

NAME	FROM	TYPE	CONF	TO	TYPE	CONF	FROM	TO
OX	33.60	TOP	1	36.00	BOT	1		
BGD	36.00	TOP	1	152.10	BOT	1		

DRILLHOLE LISTING REPORT - VALLEY

 * ID: D8506 *
 * ID: D8506 *

SAMPLE DATA

***** NOTE: -99 INDICATES A MISSING VALUE. *****

SAMPLE FROM	SAMPLE TO	ROCK TYPE	CU	MO	OXID
33.60	36.60	GRANODIOR	0.23	0.0020	0.02
36.60	39.60	GRANODIOR	0.35	0.0020	0.01
39.60	42.60	GRANODIOR	0.44	0.0010	0.00
42.60	45.60	GRANODIOR	0.38	0.0000	0.00
45.60	48.60	GRANODIOR	0.68	0.0010	0.00
48.60	51.60	GRANODIOR	0.72	0.0040	0.00
51.60	54.60	GRANODIOR	0.54	0.0040	0.00
54.60	57.60	GRANODIOR	0.45	0.0030	0.00
57.60	60.60	GRANODIOR	0.34	0.0010	0.00
60.60	63.60	GRANODIOR	0.53	0.0010	0.00
63.60	66.60	GRANODIOR	0.54	0.0010	0.00
66.60	69.60	GRANODIOR	0.44	0.0130	0.00
69.60	72.60	GRANODIOR	0.51	0.0150	0.00
72.60	75.60	GRANODIOR	0.31	0.0210	0.00
75.60	78.60	GRANODIOR	0.42	0.0040	0.00
78.60	81.60	GRANODIOR	0.31	0.0000	0.00
81.60	84.60	GRANODIOR	0.24	0.0000	0.00
84.60	87.60	GRANODIOR	0.74	0.0020	0.00
87.60	90.60	GRANODIOR	0.46	0.0010	0.00
90.60	93.60	GRANODIOR	0.39	0.0030	0.00
93.60	96.60	GRANODIOR	0.52	0.0030	0.00
96.60	99.60	GRANODIOR	0.29	0.0010	0.00
99.60	102.60	GRANODIOR	0.27	0.0030	0.00
102.60	105.60	GRANODIOR	0.38	0.0060	0.00
105.60	108.60	GRANODIOR	0.29	0.0020	0.00
108.60	111.60	GRANODIOR	0.64	0.0010	0.00
111.60	114.60	GRANODIOR	0.24	0.0010	0.00
114.60	117.60	GRANODIOR	0.28	0.0010	0.00
117.60	120.60	GRANODIOR	0.21	0.0020	0.00
120.60	123.60	GRANODIOR	0.37	0.0040	0.00
123.60	126.60	GRANODIOR	0.29	0.0110	0.00
126.60	129.60	GRANODIOR	0.31	0.0030	0.00
129.60	132.60	GRANODIOR	0.27	0.0020	0.00
132.60	135.60	GRANODIOR	0.40	0.0030	0.00
135.60	138.60	GRANODIOR	0.50	0.0030	0.00
138.60	141.60	GRANODIOR	0.41	0.0020	0.00
141.60	144.60	GRANODIOR	0.35	0.0010	0.00
144.60	147.60	GRANODIOR	0.45	0.0050	0.00
147.60	150.60	GRANODIOR	0.46	0.0020	0.00
150.60	152.10	GRANODIOR	0.28	0.0060	0.00

* ID: D8507 *
* ID: D8507 *

DRILLHOLE HEADER

LATITUDE 29710.5
DEPARTURE 30139.4
ELEVATION 1223.65
DIP -90.0
AZIMUTH 0.0
LENGTH 100.59
OVERBURDEN 29.87

DRILLHOLE TYPE D
SELECTION CODE D
COLLAR CODE 1
LOGGER INITIALS KMN
DATE DRILLED 85
RATIONALIZE NO
REVISION DATE AUG 19/85
UNITS METRIC

UNITS/PARTING DATA

UNITS

PARTINGS

NAME	FROM	TYPE	CONF	TO	TYPE	CONF	FROM	TO
OX	29.87	TOP	1	38.00	BOT	1		
BGD	38.00	TOP	1	100.59	BOT	1		

DRILLHOLE LISTING REPORT - VALLEY

* ID: D8507 *
* ID: D8507 *

SAMPLE DATA

***** NOTE: -99 INDICATES A MISSING VALUE. *****

SAMPLE FROM	SAMPLE TO	ROCK TYPE	CU	MO	OXID
29.87	32.87	GRANODIOR	0.51	0.0040	0.38
32.87	35.87	GRANODIOR	0.32	0.0080	0.21
35.87	38.87	GRANODIOR	0.27	0.0030	0.05
38.87	41.87	GRANODIOR	0.38	0.0010	0.01
41.87	44.87	GRANODIOR	0.65	0.0010	0.00
44.87	47.87	GRANODIOR	0.52	0.0080	0.00
47.87	50.87	GRANODIOR	0.82	0.0020	0.00
50.87	53.87	GRANODIOR	0.59	0.0030	0.00
53.87	56.87	GRANODIOR	0.69	0.0080	0.00
56.87	59.87	GRANODIOR	0.80	0.0280	0.00
59.87	62.87	GRANODIOR	0.43	0.0060	0.00
62.87	65.87	GRANODIOR	0.46	0.0080	0.00
65.87	68.87	GRANODIOR	0.50	0.0030	0.00
68.87	71.87	GRANODIOR	0.53	0.0100	0.00
71.87	74.87	GRANODIOR	0.65	0.0020	0.00
74.87	77.87	GRANODIOR	0.72	0.0020	0.00
77.87	80.87	GRANODIOR	0.18	0.0100	0.00
80.87	83.87	GRANODIOR	0.27	0.0030	0.00
83.87	86.87	GRANODIOR	0.32	0.0030	0.00
86.87	89.87	GRANODIOR	0.25	0.0040	0.00
89.87	92.87	GRANODIOR	0.43	0.0020	0.00
92.87	95.87	GRANODIOR	0.28	0.0020	0.00
95.87	98.87	GRANODIOR	0.60	0.0030	0.00
98.87	100.59	GRANODIOR	0.41	0.0080	0.00

DRILLHOLE LISTING REPORT - VALLEY

* ID: D8508 *
* ID: D8508 *

DRILLHOLE HEADER

LATITUDE	29178.8	DRILLHOLE TYPE	D
DEPARTURE	29774.1	SELECTION CODE	D
ELEVATION	1309.14	COLLAR CODE	1
DIP	-45.0	LOGGER INITIALS	KMN
AZIMUTH	270.0	DATE DRILLED	85
LENGTH	142.34	RATIONALIZE	NO
OVERBURDEN	4.60	REVISION DATE	AUG 19/85
		UNITS	METRIC

UNITS/PARTING DATA

UNITS

PARTINGS

NAME	FROM	TYPE	CONF	TO	TYPE	CONF	FROM	TO
BGD	4.60	TOP	1	32.40	BOT	1		
FX	32.40	TOP	1	38.10	BOT	1		
BGD	38.10	TOP	1	76.05	BOT	1		
FX	76.05	TOP	1	80.00	BOT	1		
BGD	80.00	TOP	1	142.34	BOT	1		

 * ID: D8508 *
 * ID: D8508 *

SAMPLE DATA

***** NOTE: -99 INDICATES A MISSING VALUE. *****

SAMPLE FROM	SAMPLE TO	ROCK TYPE	CU	MO	OXID
4.60	7.60	GRANODIOR	0.31	0.0140	0.00
7.60	10.60	GRANODIOR	0.16	0.0020	0.00
10.60	13.60	GRANODIOR	0.18	0.0050	0.00
13.60	16.60	GRANODIOR	0.17	0.0030	0.00
16.60	19.60	GRANODIOR	0.10	0.0040	0.00
19.60	22.60	GRANODIOR	0.07	0.0060	0.00
22.60	25.60	GRANODIOR	0.08	0.0050	0.00
25.60	28.60	GRANODIOR	0.08	0.0070	0.00
28.60	31.60	GRANODIOR	0.06	0.0070	0.00
31.60	34.60	GRANODIOR	0.18	0.0310	0.00
34.60	37.60	GRANODIOR	0.28	0.0190	0.00
37.60	40.60	GRANODIOR	0.18	0.0380	0.00
40.60	43.60	GRANODIOR	0.32	0.0170	0.00
43.60	46.60	GRANODIOR	0.21	0.0350	0.00
46.60	49.60	GRANODIOR	0.14	0.0140	0.00
49.60	52.60	GRANODIOR	0.07	0.0070	0.00
52.60	55.60	GRANODIOR	0.22	0.0240	0.00
55.60	58.60	GRANODIOR	0.16	0.0130	0.00
58.60	61.60	GRANODIOR	0.12	0.0080	0.00
61.60	64.60	GRANODIOR	0.26	0.0160	0.00
64.60	67.60	GRANODIOR	0.25	0.0080	0.00
67.60	70.60	GRANODIOR	0.30	0.0440	0.00
70.60	73.60	GRANODIOR	0.18	0.0120	0.00
73.60	76.60	GRANODIOR	0.08	0.0110	0.00
76.60	79.60	GRANODIOR	0.11	0.0070	0.00
79.60	82.60	GRANODIOR	0.23	0.0450	0.00
82.60	85.60	GRANODIOR	0.19	0.0600	0.00
85.60	88.60	GRANODIOR	0.15	0.0100	0.00
88.60	91.60	GRANODIOR	0.06	0.0040	0.00
91.60	94.60	GRANODIOR	0.09	0.0060	0.00
94.60	97.60	GRANODIOR	0.25	0.0360	0.00
97.60	100.60	GRANODIOR	0.07	0.0050	0.00
100.60	103.60	GRANODIOR	0.10	0.0050	0.00
103.60	106.60	GRANODIOR	0.07	0.0060	0.00
106.60	109.60	GRANODIOR	0.07	0.0030	0.00
109.60	112.60	GRANODIOR	0.05	0.0050	0.00
112.60	115.60	GRANODIOR	0.03	0.0040	0.00
115.60	118.60	GRANODIOR	0.05	0.0130	0.00
118.60	121.60	GRANODIOR	0.17	0.0030	0.00
121.60	124.60	GRANODIOR	0.06	0.0030	0.00

 * ID: D8508 *
 * ID: D8508 *

SAMPLE DATA

***** NOTE: -99 INDICATES A MISSING VALUE. *****

SAMPLE FROM	SAMPLE TO	ROCK TYPE	CU	MO	OXID
124.60	127.60	GRANODIOR	0.16	0.0030	0.00
127.60	130.60	GRANODIOR	0.02	0.0030	0.00
130.60	133.60	GRANODIOR	0.05	0.0040	0.00
133.60	136.60	GRANODIOR	0.13	0.0090	0.00
136.60	139.60	GRANODIOR	0.09	0.0030	0.00
139.60	142.34	GRANODIOR	0.03	0.0010	0.00

* ID: D8509 *
* ID: D8509 *

DRILLHOLE HEADER

LATITUDE	29115.4	DRILLHOLE TYPE	D
DEPARTURE	30574.0	SELECTION CODE	D
ELEVATION	1248.97	COLLAR CODE	1
DIP	-90.0	LOGGER INITIALS	KMN
AZIMUTH	0.0	DATE DRILLED	85
LENGTH	110.34	RATIONALIZE	NO
OVERBURDEN	42.37	REVISION DATE	AUG 19/85
		UNITS	METRIC

UNITS/PARTING DATA

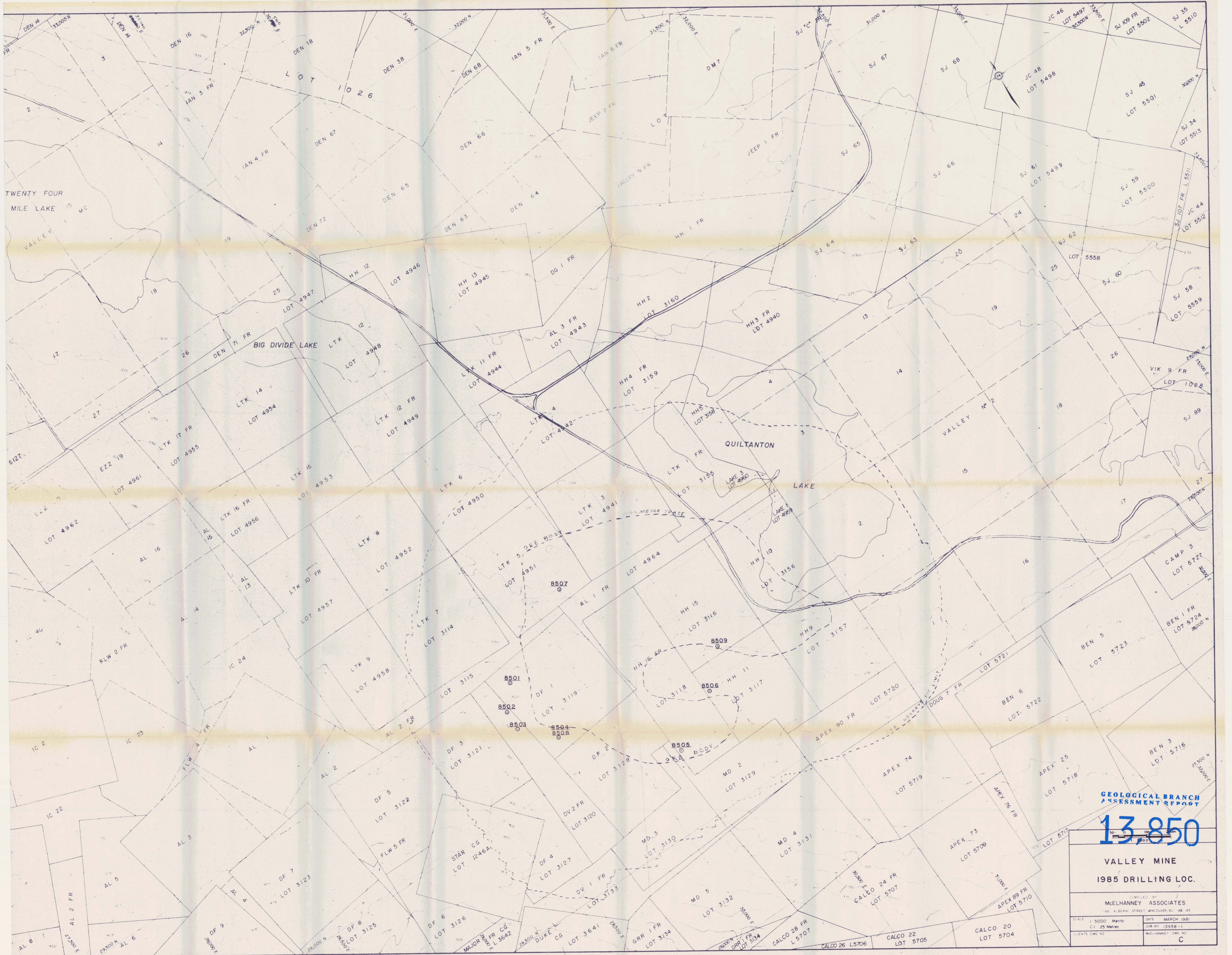
UNITS				PARTINGS				
NAME	FROM	TYPE	CONF	TO	TYPE	CONF	FROM	TO
OX	42.37	TOP	1	49.05	BOT	1		
BGD	49.05	TOP	1	110.34	BOT	1		

 * ID: D8509 *
 * ID: D8509 *

SAMPLE DATA

***** NOTE: -99 INDICATES A MISSING VALUE. *****

SAMPLE FROM	SAMPLE TO	ROCK TYPE	CU	MO	OXID
42.37	45.37	GRANODIOR	0.31	0.0020	0.22
45.37	48.37	GRANODIOR	0.17	0.0020	0.01
48.37	51.37	GRANODIOR	0.39	0.0000	0.01
51.37	54.37	GRANODIOR	0.22	0.0000	0.01
54.37	57.37	GRANODIOR	0.33	0.0090	0.01
57.37	60.37	GRANODIOR	0.51	0.0010	0.01
60.37	63.37	GRANODIOR	0.32	0.0020	0.01
63.37	66.37	GRANODIOR	0.60	0.0140	0.01
66.37	69.37	GRANODIOR	0.47	0.0070	0.01
69.37	72.37	GRANODIOR	0.44	0.0080	0.01
72.37	75.37	GRANODIOR	0.30	0.0070	0.01
75.37	78.37	BETH PORP	0.55	0.0030	0.01
78.37	81.37	BETH PORP	0.32	0.0010	0.01
81.37	84.37	BETH PORP	0.51	0.0050	0.01
84.37	87.37	BETH PORP	0.29	0.0040	0.01
87.37	90.37	GRANODIOR	0.37	0.0130	0.01
90.37	93.37	GRANODIOR	0.35	0.0020	0.01
93.37	96.37	GRANODIOR	0.34	0.0080	0.01
96.37	99.37	GRANODIOR	0.40	0.0000	0.01
99.37	102.37	GRANODIOR	0.64	0.0010	0.01
102.37	105.37	GRANODIOR	0.30	0.0050	0.01
105.37	108.37	GRANODIOR	0.28	0.0040	0.01
108.37	110.34	GRANODIOR	0.24	0.0010	0.01



GEOLOGICAL BRANCH
ASSESSMENT REPORT

13,850

VALLEY MINE
1985 DRILLING LOC.

COMPILED BY McELHANNEY ASSOCIATES 186 ALBANY STREET, VANCOUVER, B.C. V6B 4S5	
SCALE 1:5000 Metric 1:25 Metres	DATE MARCH 1981 JOB NO. 13958-1 MELHANNEY DRAWING NO. C
CLIENTS DRAW NO.	