

85-7-11

13873

HERBERT D. SCHNELLE

ASSESSMENT WORK REPORT FOR 1985

CLAIMS INCLUDED - EAGLE, TROY & FLORETTE

Vancouver Mining Division

NTS 92G-14W

49°56'N; 123°22'W

OPERATOR AND OWNER : HERBERT D. SCHNELLE
6203 - 124 Street
Edmonton, Alberta
T6H 3V1
Free Miners License #234818

AUTHORS : H.D. SCHNELLE
J.A. CHAMBERLAIN, P.Eng. (Appendix)

DATE : September, 1985

**GEOLOGICAL BRANCH
ASSESSMENT REPORT**

13,873

TABLE OF CONTENTS

	<u>Page</u>
Introduction	1
Fig. 1 - Regional Location Map	2
Fig. 2 - Eagle, Troy and Florette Mineral Claims Group Map & Troy Claims Diamond Drill Holes Information	3
Diamond Drilling Statistics on Eagle, Troy and Florette Claims Record #1714, 1715 & 1834	4
Work Program for 1985 - Statement of Cost	5

APPENDIX

Diamond Drill Data	A-1
Diamond Drill Results	A-2
Recommendations	A-3
Diamond Drill Logs	follows A-3
Fig. A-1 Location Map, General	follows A-3
Fig. A-2 Drill Hole Locations	follows A-3
Assay Certificate	follows A-3

INTRODUCTION

The Eagle, Troy and Florette Group is located in the Vancouver Mining Division on Claim Sheet 92G-14W, about $49^{\circ}56'$ latitude and $123^{\circ}24'$ longitude, 6 miles up Ashlu Creek from its junction with the Squamish River (Figs. 1 and 2).

The property is accessible via a highway up the Squamish River and a 6 miles logging road up Ashlu Creek, for a total distance of about 26 miles from Squamish.

Mr. Herbert D. Schnelle is the owner of the claims which comprise 50 contiguous units as follows:

EAGLE	-	1714 (9)	UNIT 20 (AS AGENT)
TROY	-	1715 (4)	UNIT 20
FLORETTE	-	1834 (7)	UNIT 10

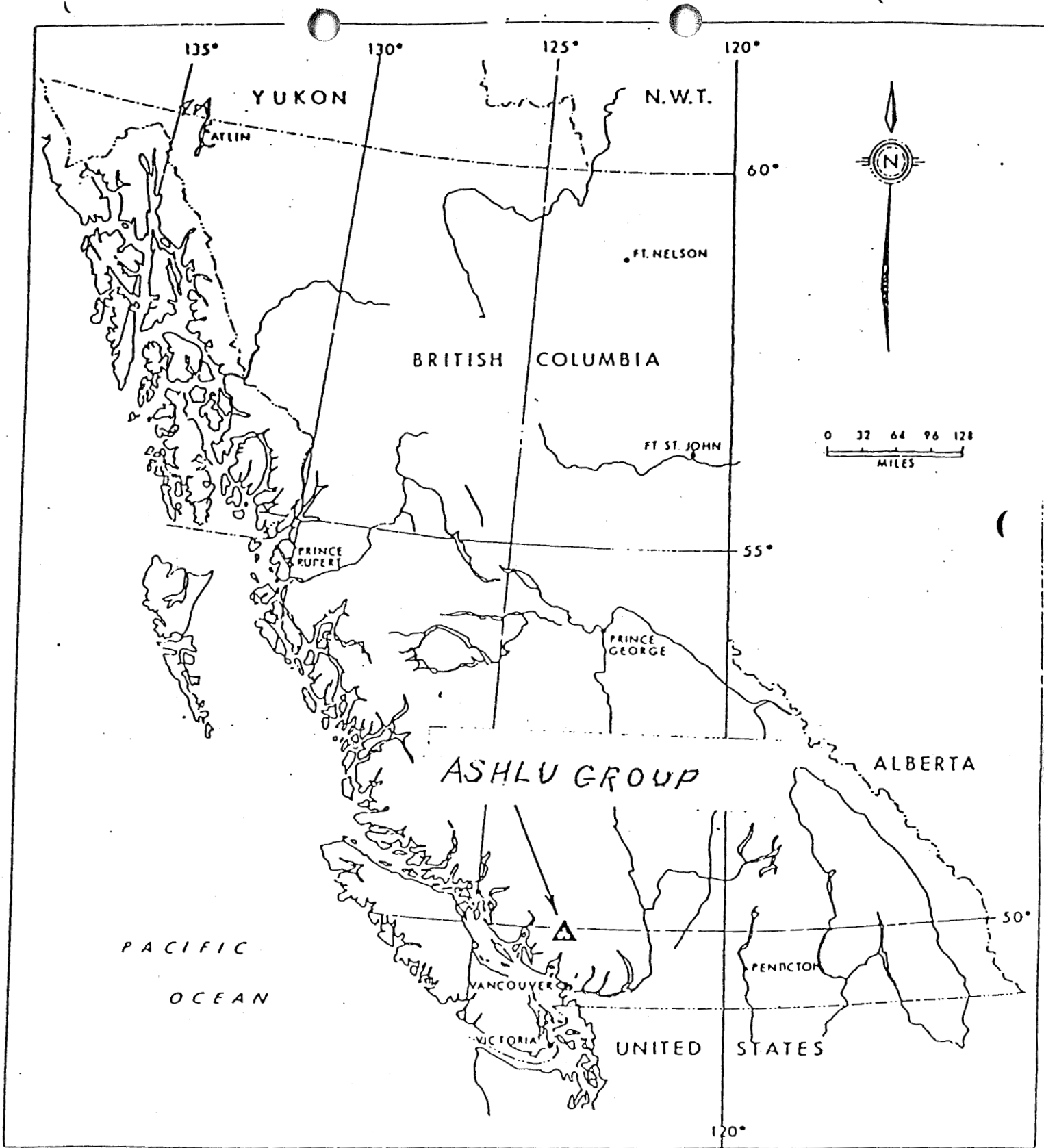


FIG. No. 1

REGIONAL LOCATION MAP

ASHLU GROUP
BRITISH COLUMBIA

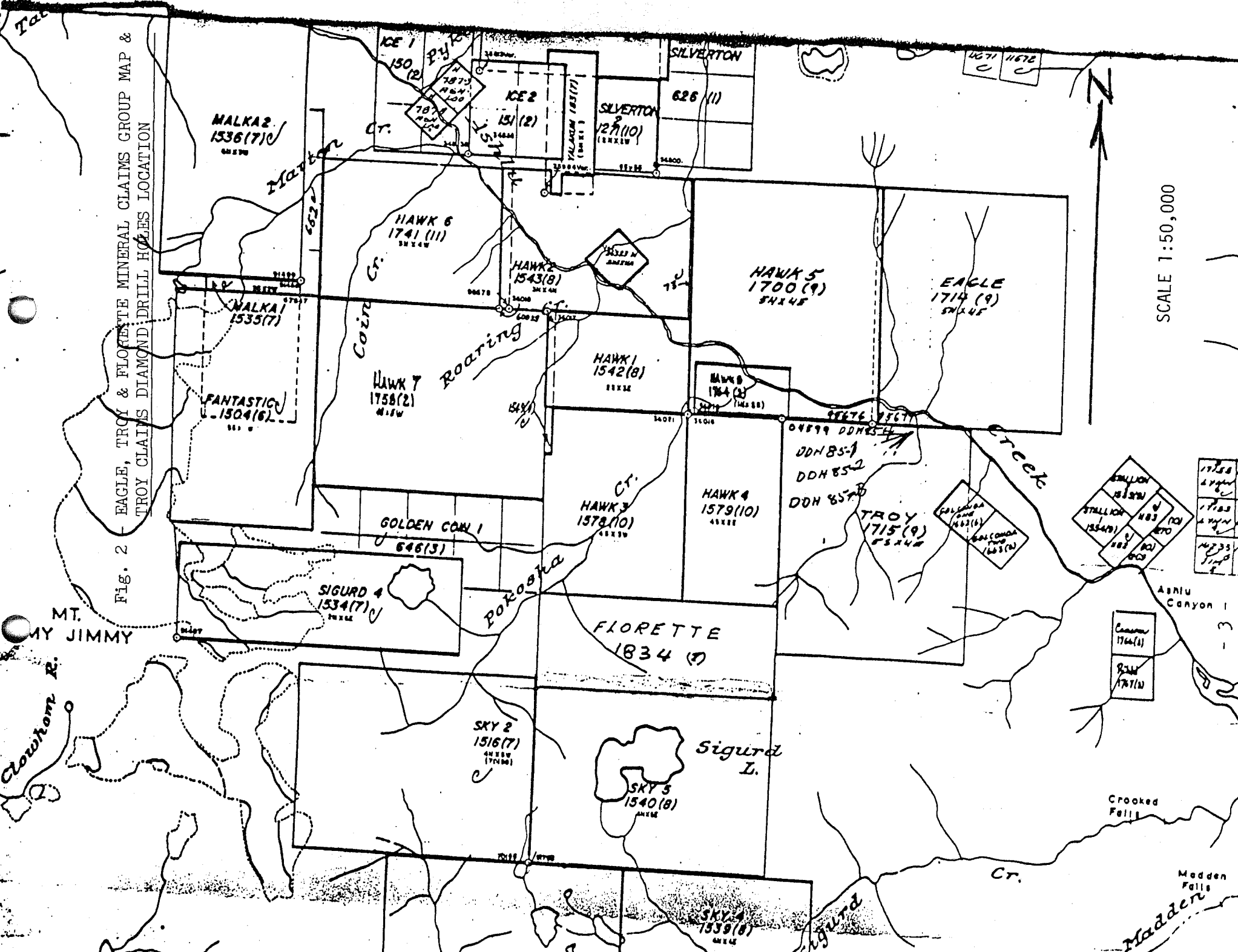


Fig. 2 EAGLE, TROY & FLORETTE MINERAL CLAIMS GROUP MAP & TROY CLAIMS DIAMOND DRILL HOLES LOCATION

SCALE 1:50,000

MT. JIMMY
Crown R.

Madden Cr.

DIAMOND DRILLING STATISTICS ON
EAGLE, TROY & FLORETTE CLAIMS
RECORD #1714, 1715 & 1834 for 1985

The purpose of this diamond drilling program was to provide further knowledge on the geological structures at the property, and to explore for gold-bearing veins.

A map showing diamond drill hole locations is included in the appendix.

There were a total of four holes drilled on the property in the summer of 1985. They were DDH 85-1 to 85-4. A total of 145 metres of 2.54 cm core was drilled.

All drill core was logged by a qualified geologist, Dr. Joseph A. Chamberlain of Dolmage Campbell & Associates (1975) Ltd. Drill logs and geological results are included in the Appendix.

WORK PROGRAM FOR 1985 - STATEMENT OF COSTS

A. DIAMOND DRILLING

Above Ground Drilling - 145 metres

Drilling	145 metres @ \$56/m	\$ 8,120.00
Wages	2 men - 222 hrs. @ \$10/hr.	4,440.00
Four wheel drive	27 days @ \$25 per day	675.00
250' 3/4" plastic pipe	@ 30¢ per ft.	75.00
20 Drill rods		1,626.00
Lumber for drill site		54.00
Core boxes	8 @ \$12.50 each	100.00
Allowance for living in camp		
- 24 days	2 men @ \$35 per day each	1,680.00
Travelling		120.00
Miscellaneous supplies		<u>1,300.00</u>
		18,190.00
Office overhead - 10%		<u>1,819.00</u>
		\$20,009.00
		=====

B. LOGGING OF CORE AND ASSAYING BY GEOLOGIST

Logging of core and assaying	\$ 420.00
Office overhead - 10%	<u>42.00</u>
	\$ 462.00
	=====

Certified correct:



Herbert D. Schnelle

APPENDIX

by J.A. Chamberlain, Ph.D., P.Eng.
Dolmage Campbell & Associates (1975) Ltd.
1870 - 1055 West Hastings Street
Vancouver, B.C.
V6E 2E9

DIAMOND DRILL HOLE DATA

The following holes were drilled on the Troy claims during the summer of 1985. All holes were collared at coordinates 5,530,900 m N, 473,900 m E (UTM Grid) at an elevation of 275 m above sea level.

DDH 85-1

Length 46.3 m
Dip -45°
Azimuth 245'

DDH 85-2

Length 32.9 m
Dip -40°
Azimuth 245'

DDH 85-3

Length 16.3 m
Dip -33°
Azimuth 245'

DDH 85-4

Length 48.8 m
Dip -55°
Azimuth 245'

The holes were located approximately 30 m west of a tributary to Ashlu Creek near the northern boundary of the Troy claims on the south side of the Ashlu Creek road, as indicated in Figure A-2.

DIAMOND DRILL RESULTS

The four subject holes were drilled to investigate suspected mineralization along a contact between meta diorite and underlying quartz diorite. The contact was observed on surface about 40 m upslope (south-west) of the drill hole collars, and is marked by closely-spaced limonite-coated fractures with minor quartz veins.

This zone which appears to strike northwest was believed to be a target for pyrite-gold mineralization.

Drill results indicate that the meta diorite-quartz diorite contact is irregular but generally steeply dipping. Limonite-coated fractures were noted at several locations in the drill core (see detailed drill logs immediately following) but no significant mineralization was noted either at the contact in question or elsewhere in the drilling.

One fractured, oxidized zone was sampled over one foot (0.3 m) at 70' (21.3 m) in DDH 85-1. An additional sample was taken over one foot at 145' (44.2 m) in the same hole in a zone of minor quartz veins. Results are given below. (See also assay certificate following Figure A-2.)

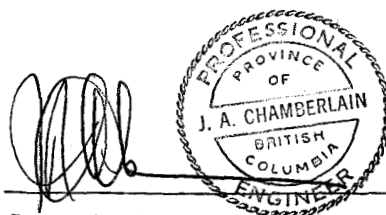
DDH 85-1 @ 70', interval 1' 0.027 oz/ton Au

DDH 85-1 @ 145', interval 1' 0.008 oz/ton Au

RECOMMENDATIONS

The above results, while not of direct economic interest, indicate the presence of some gold within oxidized fracture zones. Additional exploration is therefore warranted to define structures of this kind within the subject claims.

Certified correct:



Joseph A. Chamberlain, Ph.D., P.Eng.

Herb Schnelle

DRILL RECORD — DOLMAGE, CAMPBELL & ASSOCIATES LTD.

Coord.:

Elev.: 275 m
Core Size: EX

Length: 152' (46.3m) Project : Gold Exploration, Troy Claims
Azimuth: 245° Location: 30 m west of creek on Troy
Dip: -45° Purpose: claims south of Ashlu Creek

Hole No.: 85-1
Date: Sept. 25, 1985
Logged By: JAC

DEPTH (metres)		ROCK TYPE	DESCRIPTION	CORE LOSS		
FROM	TO			FROM	TO	LOST
0 (0	39 -11.8 m)	Meta Diorite	Pale grey mg to fg rock distinctly banded @ 25° to 40° to c.a. Broken core 10' (3 m) to 11' (3.3 m) with rusty partings. No sulps.	0 (0	39 -11.8 m)	2 0.6 m
39 (11.8	54 -16.4 m)	Quartz Diorite	Pale grey, m.g., massive rock with 20% mafics, mainly hornblende.	39 (11.8	54 -16.4 m)	2 0.6 m
54 (16.4	63 -19.2 m)	Meta Diorite	As 0-39 (0-11.8 m)	54 (16.9	63 -19.2 m)	0
63 (19.2	152 -46.3 m)	Quartz Diorite	As 39-54 (11.8-16.4 m) 68 (20.7 m) to 70 (21.3 m) minor broken core with limonite coatings on fracture surfaces. 113' (34.4 m) 2" quartz.	63 (19.2	152 -46.3 m)	1 0.3 m
EOH			Overall core recovery.	96.7%		

Project — Gold Exploration, Troy Claims — Hole No. 85-1

Herb Schnelle

DRILL RECORD — DOLMAGE, CAMPBELL & ASSOCIATES LTD.

Coord.:

Length: 108' (32.9m) Project : Gold Exploration, Troy Claims
 Azimuth: 245° Location: 30 m west of creek on Troy
 Dip: -40° Purpose: claims south of Ashlu Creek

Hole No.: 85-2
 Date: Sept. 25, 1985
 Logged By: JAC

Elev.: 275 m
 Core Size: EX

DEPTH (metres)		ROCK TYPE	DESCRIPTION	CORE LOSS		
FROM	TO			FROM	TO	LOST
0 (0-	30 9.1 m)	Meta Diorite	Pale grey, m.g., rock distinctly banded at 0° to 40° to c.a. 28 (8.5 m) to 29 (8.8 m) broken chlorite-rich core. 23'1" qtz. vein, barren.	0 (0-	30 9.1 m)	1 0
30 (9.1-	57 17.3 m)	Quartz Diorite	Med. grey, m.g. rock, massive, with average 30% mafics, principally hornblende, but with local zones higher in biotite. No sulphides.	30 (9.1-	57 17.3 m)	0
57 (17.3-	60 18.3 m)	Meta Diorite	High angle banding, contorted, low mafic rock. No mineralization.	57 (17.3-	60 18.3 m)	0
60 (18.3-	108 32.9 m)	Quartz Diorite	M.g. rock, mainly massive but with local banded sections.	60 (18.3-	108 32.9 m)	1 0.3 m
EOH			Overall core recovery.	98.1%		

Project Gold Exploration, Troy Claims
 Hole No. 85-2

Herb Schnelle

DRILL RECORD — DOLMAGE, CAMPBELL & ASSOCIATES LTD.

Coord.:

Elev.: 275 m

Core Size: EX

Length: 54.3' (16.5m) Project: Gold Exploration, Troy Claims

Azimuth: 245° Location: 30 m west of creek on Troy

Dip: 33° Purpose: claims south of Ashlu Creek

Hole No.: 85-3

Date: Sept. 25, 1985

Logged By: JAC

DEPTH (metres)		ROCK TYPE	DESCRIPTION	CORE LOSS		
FROM	TO			FROM	TO	LOST
0	24 (0 - 7.3 m)	Meta Diorite	Pale grey, f.g. rock with contorted banding. Local broken core with limonite coatings on fracture at 2'-3', 18'-19' (5.5-5.8 m). Chlorite-rich zones at 12' (3.6 m) to 13' (3.9 m) but no significant structure. No mineralization.	0	24 (0 - 7.3 m)	0
24	44 (7.3-13.4 m)	Quartz Diorite	M.g., massive q.d. with 30 to 40% mafics, mainly hornblende, but locally higher in biotite. No mineralization.	24	44 (7.3-13.4 m)	2
44	54.3 (13.4-16.3 m)	Meta Diorite	Pale grey rock with vague somewhat contorted banding, similar to 0-24 (0-7.3 m). No mineralization.	44	54.3 (13.4-16.5 m)	0
EOH				Overall core recovery. 96.3%		

Project Gold Exploration, Troy Claims

Hole No.

85-3

Herb Schnelle

DRILL RECORD — DOLMAGE, CAMPBELL & ASSOCIATES LTD.

Coord.:

Elev.: 275 m
Core Size: EX

Length: 160' (48.8m) Project: Gold Exploration, Troy Claims
Azimuth: 245° Location: 30 m west of creek on Troy
Dip: -55° Purpose: claims south of Ashlu Creek

Hole No.: 85-4
Date: Sept. 25, 1985
Logged By: JAC

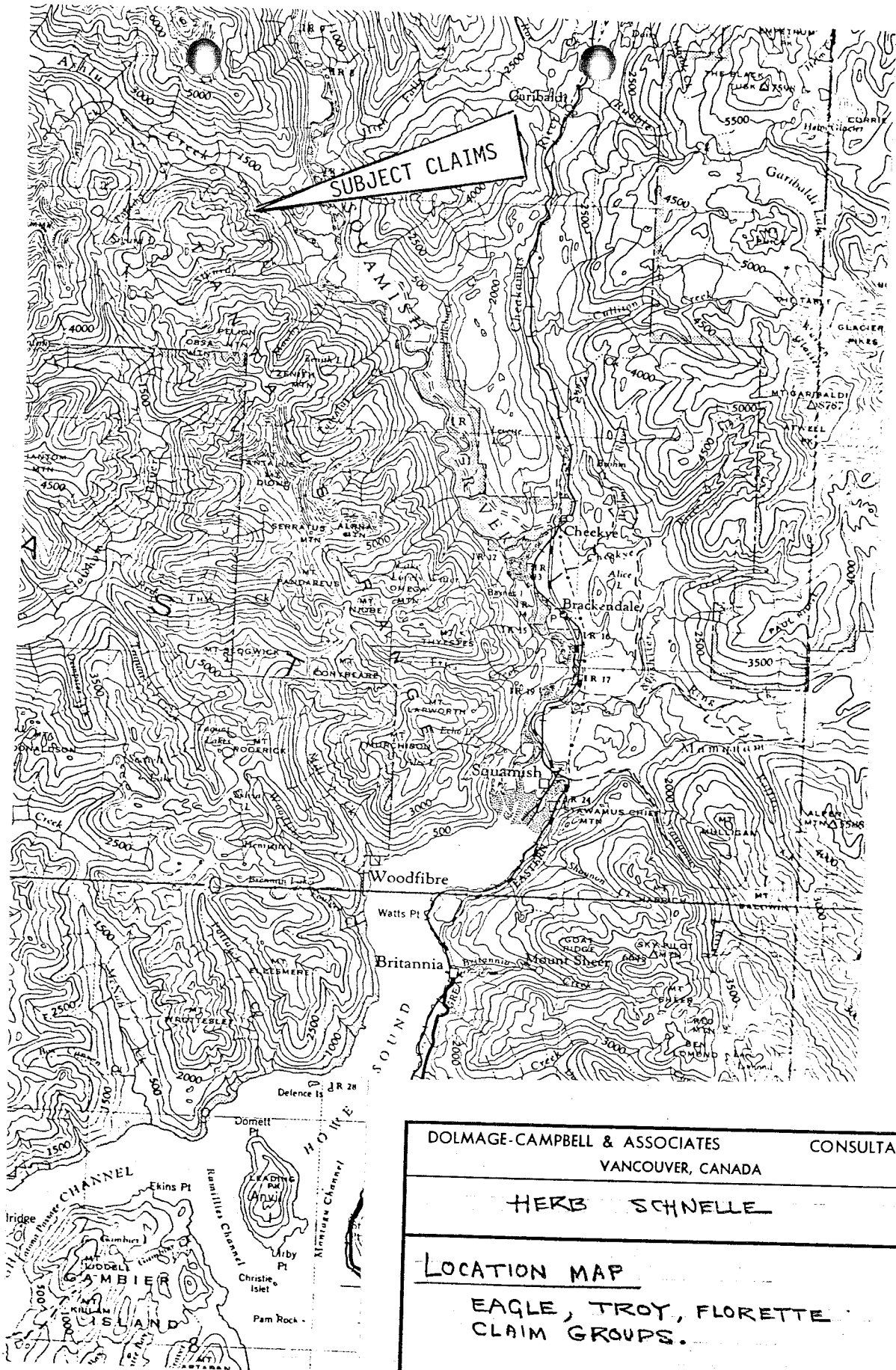
DEPTH (metres)		ROCK TYPE	DESCRIPTION	CORE LOSS		
FROM	TO			FROM	TO	LOST
0	35 (0 -10.7 m)	Meta Diorite	Pale grey, f.g., distinctly banded rock. Core locally fractured with limonite coatings on fracture surfaces. Chlorite rich zone 16 to 17.5' (5-5.3 m). No mineralization.	0	35 (0 -10.7 m)	3 0.3 m
35	52 (10.7-15.8 m)	Quartz Diorite	Medium grey, m.g. massive textured rock, local limonite on fractures but no pyrite or other mineralization.	35	52 (10.7-15.8 m)	0
52	63 (15.8-19.2 m)	Meta Diorite	As 0-35 (0-10.7 m) but with broken core at 59' to 62' (18-19 m) with minor limonite on fractures.	52	63 (15.8-19.2 m)	0
63	160 (19.2-48.8 m)	Quartz Diorite	Med. grey, massive q.d. with broken core at 87' (26.5 m) with limonite coatings on fractures.	63	160 (19.2-48.8 m)	1 0.3 m
EOH				Overall core recovery. 97.5%		

Project

Gold Exploration, Troy Claims

Hole No.

85-4



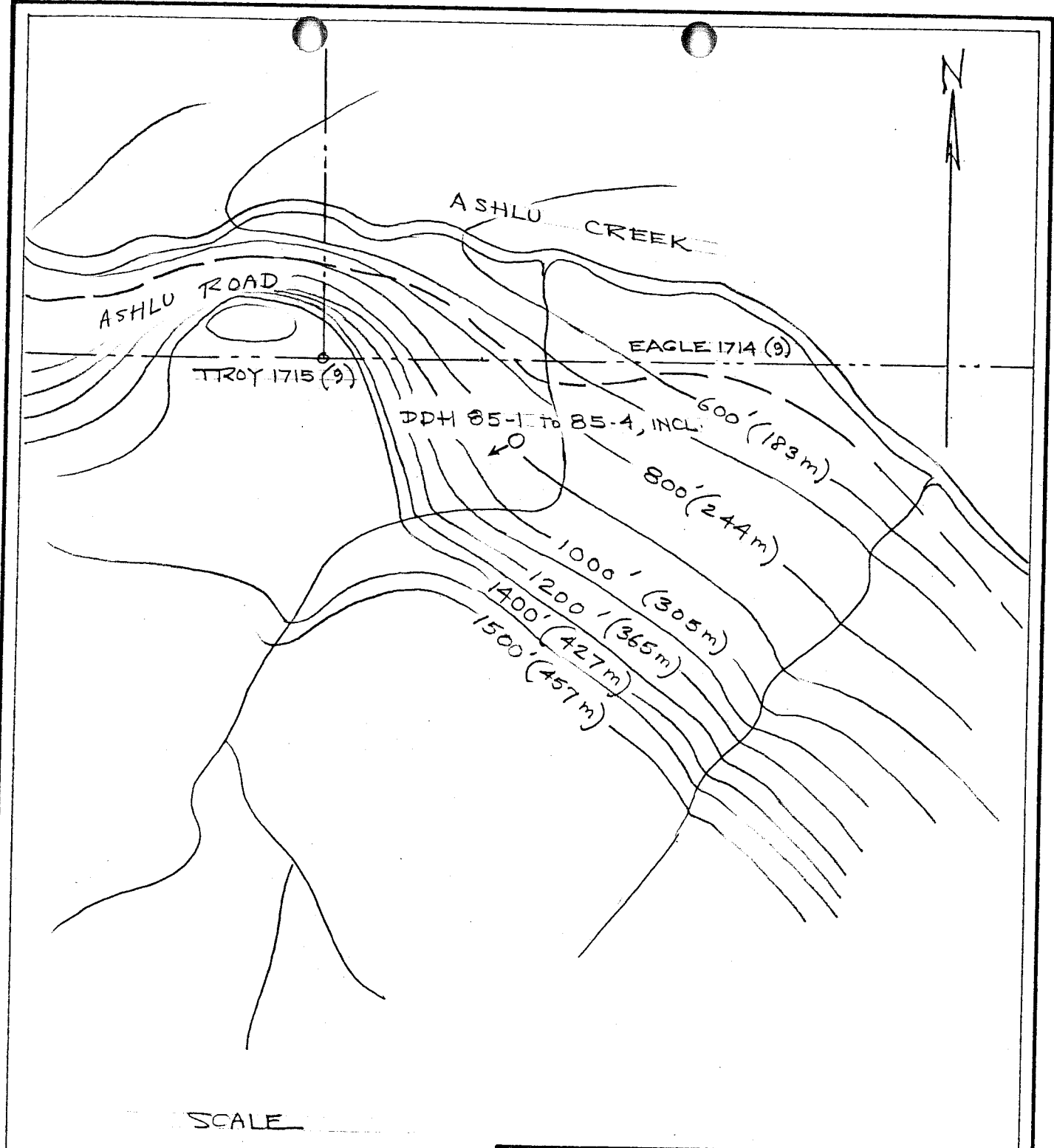
SUBJECT CLAIMS

DOLMAGE-CAMPBELL & ASSOCIATES CONSULTANTS
VANCOUVER, CANADA

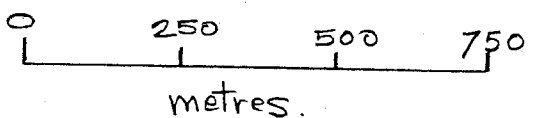
HERB SCHNELLE

LOCATION MAP
EAGLE, TROY, FLORETTE
CLAIM GROUPS.

SCALE: 1:250,000 SEPT, 1985 FIG. A-1



SCALE



ROAD

CLAIM BOUNDARY
(APPROXIMATE)

DOLMAGE CAMPBELL & ASSOCIATES LTD. CONSULTANTS VANCOUVER, CANADA		
H. D. SCHNELLE		
DRILL HOLE LOCATIONS DDH 85-1, 85-2, 85-3, 85-4.		
SCALE: 1:12,500	OCT 7/85	FIG. A-2



REPORT: 425-3195

PROJECT: NONE GIVEN

PAGE 1

SAMPLE NUMBER	ELEMENT UNITS	Au OPT
------------------	------------------	-----------

P4 DDH-85-1-70'		0.027
P4 DDH-85-1-145'		0.008

JOSEPH A. CHAMBERLAIN, Ph.D., P. Eng.

Director

Born

British Columbia, 1926

Education

1955 Bachelor's degree in Geological Sciences, University of British Columbia

1957 M.Sc. in Structural Geology, Harvard University

1958 Ph.D. in Structural and Economic Geology, Harvard University



Professional Affiliations

Association of Professional Engineers of the province of British Columbia

Canadian Institute of Mining and Metallurgy

Society of Economic Geologists

Geological Association of Canada

American Institute of Mining Engineers

Vancouver Geotechnical Society

EXPERIENCE SUMMARY

Dr. Chamberlain is a geologist with over twenty-five years experience in mineral exploration, research and engineering projects. He has particular broad expertise on base metal deposits, is an expert on nickel deposits, and is eminently qualified in ore and petrographic microscopy.

His early career as exploration and mine geologist for various mining companies was followed by ten years as Research Scientist with the Geological Survey of Canada where he was in charge of research on uranium and nickel deposits in Canada. During this period, he published seventeen scientific papers, many of which were concerned with mineralogical exploration guides to ore deposits.

In 1968, Dr. Chamberlain became an Associate of Dolmage Campbell. On-going assignments included geological and structural studies on ultramafic deposits in Spain, nickel deposits in New Caledonia, South Africa, United States and Canada, and tungsten deposits in Thailand. While consulting, Dr. Chamberlain accepted a half-time Professorship at the University of British Columbia to teach ore mineralogy and ore microscopy.

In 1973, Placer Development Ltd. offered him the position of Vice President of Exploration for Marcopper Mining Corporation. Based in Manila, Dr. Chamberlain was in charge of exploration in Southeast Asia for five years. In 1979, he returned to Canada and became a Principal of Dolmage Campbell. He has consulted on and managed a wide variety of exploration and engineering projects, including alignment and portal exploration for B.C. Railway's Tumbler Ridge tunnels and geological reconnaissance on river basin development for B.C. Hydro. Dr. Chamberlain acted as Expert Witness at the Royal Commission of Enquiry into Uranium Mining in British Columbia and is registered with the Asia Development Bank as Independent Consultant for Southeast Asia.