

Addendum Report
Geochemical and Geological Surveys
Italy Group
Greenwood Mining Division
British Columbia
on behalf of
International Tillex Enterprises Inc.
by
John R. Poloni, B.Sc. P. Eng.
July 3, 1985

**GEOLOGICAL BRANCH
ASSESSMENT REPORT**

13,963

PART 2 OF 2

John R. Poloni & Associates Ltd.
1512B - 56th Street
Delta, B.C. V4L 2A8

Table of Contents

	<u>Page</u>
1.0 Summary and Conclusions	1
2.0 Introduction	2
Location Map - Plan No. 1	3
3.0 Location and Accessibility	4
4.0 Claim Information	4
5.0 Physical Features	5
6.0 History	5-6
7.0 Geology and Mineralization	6-8
8.0 Work Program 1985	8-10
9.0 Recommendations	10
10.0 Appendices	
Appendix A - Certificate	11-12
Appendix B - Assay Data & Maps	13

1.0 Summary and Conclusions

The Italy claim consisting of 16 units covers the Fife (1-4) claims and Elmore Crown Granted claim. The property is situated in the Greenwood Mining Division within the Christina and Rossland Ranges of the Monashee Mountains of South Central, British Columbia.

Geochemical and geological surveys have been completed in two programs in 1984 and 1985 with results summarized by the author on November 22, 1984 and in this report.

The soil geochemical surveys and geology have shown definite encouragement requiring that a limited program of geophysics be undertaken.

2.0 Introduction

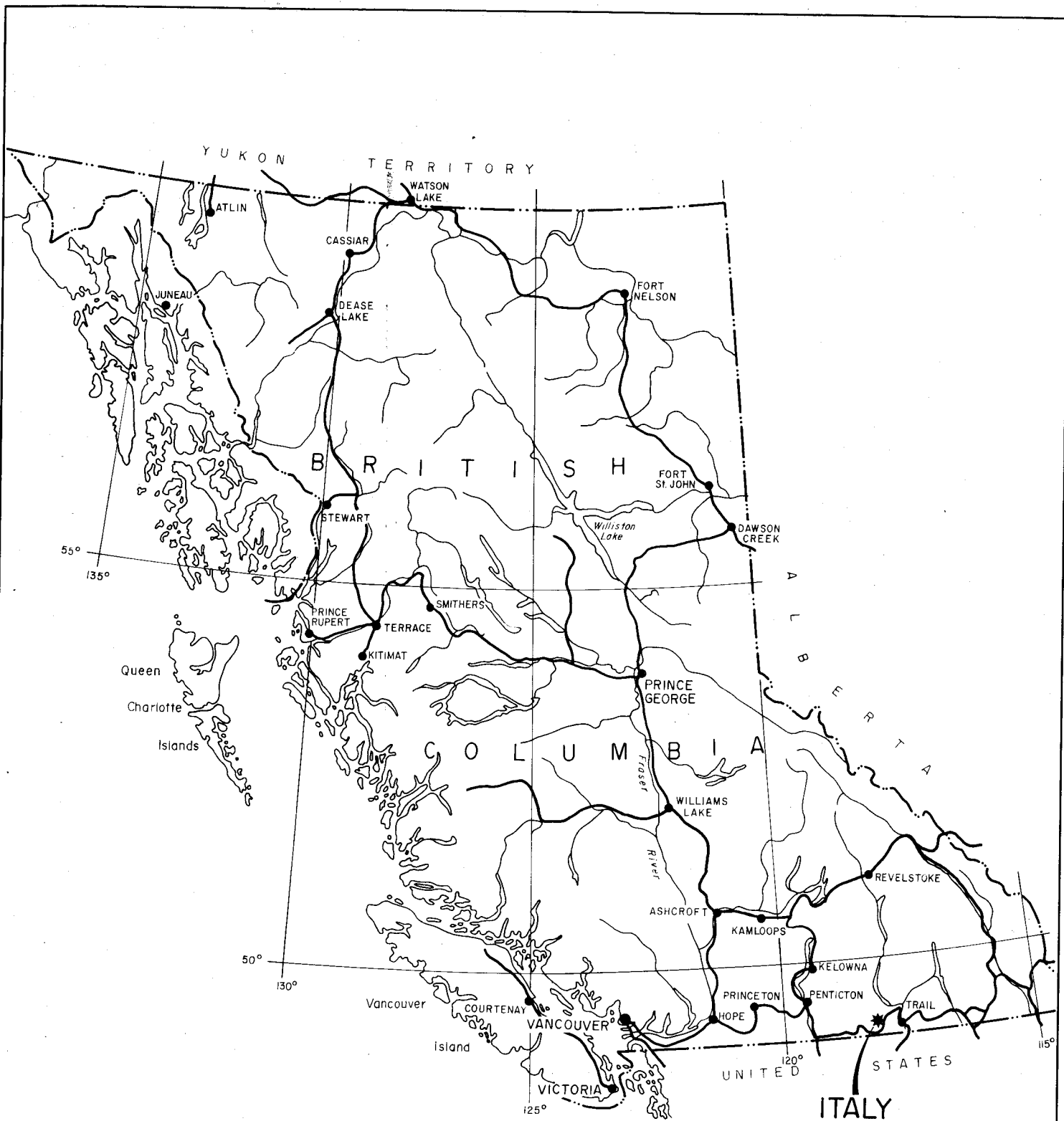
Additional geochemical and geological surveys were undertaken on the Italy claim, the Crown Granted Elmore Lot 972, and the Fife claims during the period June 3-8, 1985. These surveys covered areas not completed during November 1984 because of winter conditions.

One hundred and eighty five soil samples of B-horizon material, were collected and taken to Min-En Laboratories in Vancouver for analysis for gold, silver, copper and zinc.

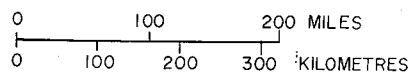
The recent surveys were undertaken along slope corrected chain and compass lines with the line interval being 100 meters and station interval of 50 meters.

Location Map

Plan No. 1



ITALY GROUP



INTERNATIONAL TILLEX ENTERPRISES LTD.		
PROPERTY LOCATION PLAN		
ITALY GROUP		
GREENWOOD MINING DIVISION		
BRITISH COLUMBIA		
JOHN R. POLONI & ASSOCIATES LTD.		
Drawn: J.R.P.	Checked: J.R.P.	Plan No.
Scale: As shown	Date: July 3, 1985	1

3.0 Location and Accessibility

The property is described as being centered at 49⁰05' North Latitude, 118⁰10' West Longitude in the Greenwood Mining Division of British Columbia. Physical location is immediately east of Christina Lake on the westerly slopes of the Rossland Range between Sutherland and Baker Creeks.

Access is via old logging roads leaving Christina Lake and Highway No. 3 travelling along Sutherland Creek. Recently a new access logging road has been completed and parts of the westerly claim area logged.

Four wheel drive is necessary during spring break up and fall weather conditions, but during summer months two wheel drive will suffice.

4.0 Claim Information

The property is composed of the Italy claim of 16 units which covers the Fife (1-4) claims and the Elmore Crown Granted claim Lot 972. The Italy claim was allowed to lapse but has recently been restaked by J.J. Poloni as agent for International Tillex and subsequently by J.J. Poloni as agent for John Bethune Robertson lawyer for International Tillex.

The Fife (1-4) and Elmore 972 remain in good standing until September 13, 1985 and September 4, 1985 respectively. The Italy claim was relocated on July 3, 1985.

5.0 Physical Features

The property lies within the Christina and Rossland Mountain Ranges of the Monashee Mountains which form the Southeastern part of the Interior Plateau of the Cordilleran Region of British Columbia. Typically the area is one of rounded mountains with relatively gentle wooded slopes which are cut by moderate to deeply incised stream valleys. Elevations on the property range between 3,000 and 4,000 feet above sea level. Terrain is moderate, generally, except for steeper slopes to the south.

Numerous old logging roads exist, and recently new roads were built to permit logging operations over the westerly part of the property. Several old building ruins were observed.

6.0 History

Mineral exploration in the area dates from the significant discovery made in the 1890's in the Greenwood-Grand Forks region of the Boundary District. By 1900 several mines including the large Phoenix operation of Granby Mining Company had achieved production with smelters being established at Grand Forks and Greenwood. The operations at Phoenix terminated in 1919 with dwindling ore supplies.

During the 1930's - 40's a number of deposits were worked sporadically for gold.

In 1959 a 700 ton per day copper flotation mill was completed by Granby Mining and several open pit deposits were mined as a salvage operations. Former underground operations were re-activated. The

6.0 History, cont'd.

mill was expanded to 2,000 tons per day and a large open pit established on the Old Ironsides orebody. Production terminated in 1978.

Numerous deposits in the area have recorded production. A total of 15 deposits produced either disseminated copper ore with gold and silver values, or gold and silver from quartz veins.

During 1983 the area had been re-activated by the discoveries made by Kettle River Resources Limited on ground optioned from Noranda Mines in 1981; by underground development and diamond drilling by Teck Corporation on the joint-ventured Grenoble Resources ground; and by the re-opening of the Dentonia Gold Mine by Dentonia Resources Ltd. near Jewel Lake.

The Italy claim has received only a minimal amount of exploration and development in the past. Several shallow pits and trenches were completed exploring gossan zones containing pyrite, pyrrhotite, and chalcopyrite. These workings are shown on the accompanying maps. Generally the showing areas are located in metamorphosed volcanics and sediments which are dense and scarny in nature.

7.0 Geology and Mineralization

The Italy Claim is underlain by the Nelson Intrusions in contact with the Coryell Intrusions and the Mount Roberts Formation. The oldest unit occurring on the claim is the Mount Roberts Formation of Pennsylvanian or Permian age consisting of greywacke, greenstone, limestone and paragneiss. This unit encloses on the north, west

7.0 Geology and Mineralization, cont'd.

and south the Nelson Rocks of Lower Cretaceous age composed of granodiorite, porphyritic granite, diorite, monzonite and quartz monzonite. Younger Coryell Intrusions are generally reddish to pale buff coloured syenite which locally grade into granite or shonkinite.

Classification of the known economic mineral occurrences of the Greenwood-Grand Forks area has defined four types:

- A) Phoenix - disseminated chalcopyrite with significant gold and silver values occurring in the Brooklyn crystalline limestone, skarns, and calcareous argillites.
- B) Grenoble-Teck - gold, silver, copper deposits occurring in talc-carbonate alteration zones adjacent to ultramafic plugs, i.e. Old City of Paris Mine.
- C) Dentonia - quartz veins containing gold silver mineralization, occurring at or near the contacts between the Nelson Intrusives and Knob Hill greenstones and sediments.
- D) Kettle River Resources - gold associated with a stratiform lense of massive sulfides containing pyrrhotite, pyrite, and minor chalcopyrite related to laminated cherty argillite, northwest of the Old Ironsides Pit.

The main showing on the Italy Claim consists of an exposure of silicious gossan approximately 25 mm in diameter containing massive to disseminated pyrrhotite, pyrite, and minor chalcopyrite which has been explored by shallow trenches and a shaft 10 feet deep. The mineralized zone is contained in a silicified hard fine grained metamorphosed unit which appears to be related to the Nelson Intrusions.

7.0 Geology and Mineralization, cont'd.

Other showings are generally gossany and silicious, at times scarny, containing pyrite, pyrrhotite, and chalcopyrite.

8.0 Work Programs 1985

During November 1984 geochemical and geological surveys were completed on the property as summarized in my report dated November 22, 1984. Recent work during the first part of June 1985 consisted of soil geochemistry and geology over areas not covered in November of last year. A total of 185 soil samples collected of B-horizon material, were analyzed at Min-En Laboratories in Vancouver for gold, silver, copper, and zinc. The method used for analysis was geochem Cu, Zn, Ag - nitric, perchloric digestion A.A., Au - aqua regia A.A.

Copies of assay data are included in Appendix B.

The original plans No. 4-7 inclusive which accompanied the November 22, 1984 have been changed to include recent results.

Anomalous parameters previously evolved for the four elements are as follows:

Gold (PPb)

mean 6.89

anomalous 14

Silver (PPm)

mean 0.48

anomalous 0.96

8.0 Work Programs, cont'd.

Copper

mean 36.4

anomalous 72

Zinc

mean 94.9

anomalous 190

These parameters were used in contouring recent results.

Geological mapping was continued over the survey grid additions to complete the 1984 work.

All survey lines were established using hip chain and compass with station intervals at 50 meters and lines 100 meters apart. Slope corrections were made using clinometer.

All data is shown on plans 4-7 included in Appendix B.

Recent work has indicated the presence of additional geochemical anomalies. Sample 606 on line 24+00E extended the original gold anomaly (1500) PPb to the west. Eight other single station gold anomalies are indicated with the highest response being 30 PPb. Silver anomalies greater than 0.96 PPM are indicated over several stations on lines 1200, 1300, 1400, and 1500 east. Copper Zinc anomalies are indicated in the area of new work on lines 1200E, 1300E, and 1400E, with a coincident five station anomaly located immediately south of the base line centered on line 1400E.

Geologically, the area of prime interest is situated in the central part of the property extending to the west boundary where metamorphosed sediments and volcanics contain most of the old workings.

8.0 Work Programs, cont'd.

This central unit is bounded both to the north and south by intrusives.

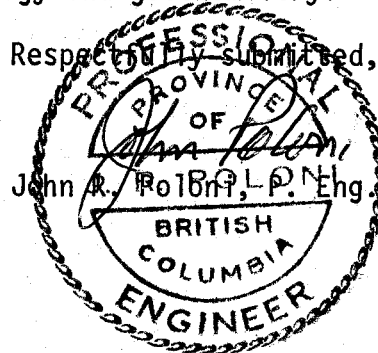
9.0 Recommendations

A limited program of VLF-EM has been completed on the areas of interest by Glen White Geophysical Consultants as part of the preliminary evaluation. This work was recommended in a letter to the company dated June 19, 1985.

Additional surveys will be recommended on evaluation of geophysical data, in relationship to geology and geochemistry.

Respectfully submitted,

John R. Poloni, P. Eng.



Appendix A
Certificate

Certificate

I, John R. Poloni, of 5502 - 8B Avenue, in the Municipality of Delta,
in the Province of British Columbia,

DO HEREBY CERTIFY THAT:

1. I am a Consulting Geologist.
2. I am a graduate of McGill University of Montreal, Quebec, where I obtained a B.Sc. Degree in Geology in 1964.
3. I am a Registered Professional Engineer in the Geological Section of the Association of Professional Engineers of the Province of British Columbia.
4. I have practiced my profession since 1964.
5. I am a Member of the Canadian Institute of Mining and Metallurgy.
6. I have personally visited the Italy Claim on March 26, 1983 and during the recent surveys in November, 1984 and June 1985.
7. I have no interest in the properties and securities of International Tillex Enterprises Inc., nor do I expect to receive or acquire any.
8. I consent to the use of this report by International Tillex Enterprises Inc. in a submission to the Vancouver Stock Exchange and/or the British Columbia Superintendent of Brokers, and to distribute all or parts of the report to the shareholders or other interested parties provided that the meaning is not altered by partial quotes.

Dated this 3rd day of July, 1985.



JOHN R. POLONI P. Eng.
Consulting Geologist

Appendix B

1.0 Assay Data

2.0 Maps

Scale

Plan No. 2	Claim Map	1:50,000
Plan No. 3	Geology Plan	1" = 4 mls.
Plan No. 4	Sample Location Plan	1:250
Plan No. 5	Geology Plan	1:250
Plan No. 6	Soil Geochemical Plan Gold (PPb), Silver (PPm)	1:250
Plan No. 7	Soil Geochemical Plan Copper (PPm), Zinc (PPm)	1:250

MIN-EN Laboratories Ltd.
Specialists in Mineral Environments
705 WEST 15th STREET NORTH VANCOUVER, B.C. CANADA V7M 1T2

PHONE: (604) 980-5814 OR (604) 988-4524

TELEX: 04-352828

GEOCHEMICAL ANALYSIS CERTIFICATE

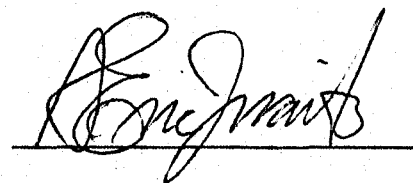
COMPANY: INTERNATIONAL TILLEX/J.R. POLONI
PROJECT:
ATTENTION: J.R. POLONI

FILE: 5-2185/P1
DATE: JUNE 12/85.
TYPE: SOIL GEOCHEM

We hereby certify that the following are the results of the geochemical analysis made on 30 samples submitted.

SAMPLE NUMBER	CU PPM	ZN PPM	AG PPM	AU PPB
600	105	108	0.9	5
601	86	115	0.8	5
602	48	61	0.6	<5
603	65	60	0.9	10
604	66	89	0.7	5
605	92	75	0.7	5
606	49	142	0.8	15
607	64	91	1.0	5
608	45	77	0.6	5
609	26	200	0.6	5
610	29	149	0.9	<5
611	42	110	0.9	5
612	40	118	0.7	5
613	49	97	0.6	5
614	52	143	0.6	10
615	19	210	0.5	5
616	72	170	1.1	5
617	34	76	1.0	5
618	28	101	0.7	5
619	25	119	0.8	<5
620	33	205	0.6	5
621	117	195	1.1	5
622	79	230	0.8	5
623	47	200	0.5	10
624	33	150	0.4	5
625	36	162	0.8	5
626	27	87	0.7	<5
627	35	85	0.6	5
628	26	112	0.6	5
629	22	73	0.7	5

Certified by



MIN-EN Laboratories Ltd.
Specialists in Mineral Environments
705 WEST 15th STREET NORTH VANCOUVER, B.C. CANADA V7M 1T2

PHONE: (604)980-5814 OR (604)988-4524

TELEX: 04-352828

GEOCHEMICAL ANALYSIS CERTIFICATE

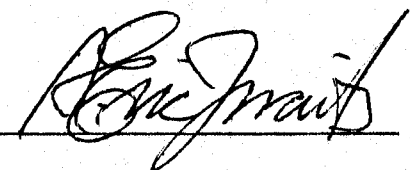
COMPANY: INTERNATIONAL TILLEX/J.R. POLONI
PROJECT:
ATTENTION: J.R. POLONI

FILE: 5-218S/P2
DATE: JUNE 12/85.
TYPE: SOIL GEOCHEM

We hereby certify that the following are the results of the geochemical analysis made on 29 samples submitted.

SAMPLE NUMBER	CU PPM	ZN PPM	AG PPM	AU PPB
630	23	139	0.7	10
631	18	70	0.4	5
632	14	67	0.6	5
633	22	141	0.4	15
634	29	66	0.5	5
635	23	75	0.7	5
636	26	107	0.6	<5
637	27	68	0.7	5
638	38	118	0.7	5
639	31	89	0.8	10
640	27	87	0.6	5
641	39	92	0.9	10
642	48	117	1.0	15
643	25	107	0.7	5
644	23	86	0.6	5
645	22	53	0.6	5
646	18	47	0.5	5
647	26	43	0.7	10
648	27	88	0.9	15
649	26	157	1.0	10
650	15	82	0.7	5
651	14	66	0.7	5
652	21	70	0.8	10
653	19	76	0.7	5
654	22	51	0.4	5
655	23	69	1.0	10
656	35	132	0.5	5
657	51	73	1.1	5
658	34	130	0.9	10

Certified by



MIN-EN Laboratories Ltd.
Specialists in Mineral Environments
705 WEST 15th STREET NORTH VANCOUVER, B.C. CANADA V7M 1T2

PHONE: (604)980-5814 OR (604)988-4524

TELEX: 04-352828

GEOCHEMICAL ANALYSIS CERTIFICATE

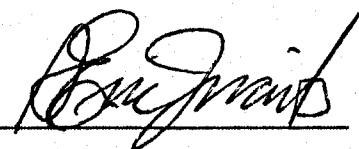
COMPANY: INTERNATIONAL TILLEX/J.R. POLONI
PROJECT:
ATTENTION: J.R. POLONI

FILE: 5-2189/P3
DATE: JUNE 12/85.
TYPE: SOIL GEOCHEM

We hereby certify that the following are the results of the geochemical analysis made on 30 samples submitted.

SAMPLE NUMBER	CU PPM	ZN PPM	AG PPM	AU PPB
659	100	130	1.0	5
660	94	96	1.0	5
661	58	115	1.2	10
662	76	138	1.1	5
663	57	80	0.6	<5
664	126	108	1.4	5
665	77	100	1.0	5
666	67	225	0.8	5
667	40	80	1.0	10
668	25	71	0.8	5
669	26	62	0.8	5
670	41	52	0.6	10
671	40	52	0.8	5
672	53	64	1.0	5
673	106	92	1.2	5
674	157	144	1.0	<5
675	47	76	0.9	<5
676	60	77	0.8	5
677	48	58	0.8	5
678	38	56	0.7	5
679	36	146	0.6	10
680	90	176	0.8	5
681	28	65	0.8	5
682	29	88	0.6	10
683	30	169	0.7	5
684	60	146	1.2	5
685	34	78	0.8	<5
686	39	76	1.4	5
687	36	78	1.0	5
688	55	100	1.2	10

Certified by



MIN-EN Laboratories Ltd.
Specialists in Mineral Environments
 705 WEST 15th STREET NORTH VANCOUVER, B.C. CANADA V7M 1T2

PHONE: (604) 980-5814 OR (604) 988-4524

TELEX: 04-352828

GEOCHEMICAL ANALYSIS CERTIFICATE

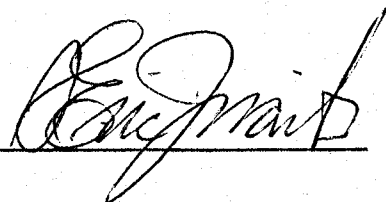
COMPANY: INTERNATIONAL TILLEX/J.R. POLONI
 PROJECT:
 ATTENTION: J.R. POLONI

FILE: 5-218S/P4
 DATE: JUNE 12/85.
 TYPE: SOIL GEOCHEM

We hereby certify that the following are the results of the geochemical analysis made on 30 samples submitted.

SAMPLE NUMBER	CU PPM	ZN PPM	AG PPM	AU PFB
689	36	94	0.9	5
690	41	107	0.6	5
691	35	115	0.7	10
692	38	91	0.9	5
693	124	108	1.0	5
694	61	170	0.7	5
695	133	220	0.8	15
696	42	162	0.6	5
697	70	110	1.1	5
698	116	111	0.8	<5
699	115	114	0.9	5
700	51	135	0.7	5
701	78	245	0.6	5
702	83	190	0.8	10
703	72	350	0.7	10
704	103	310	0.5	5
705	102	170	0.8	5
706	139	345	1.0	25
707	81	93	0.9	5
708	35	106	0.8	<5
709	31	83	0.7	5
710	44	111	1.3	5
711	50	107	0.9	5
712	49	82	0.8	10
713	54	113	0.6	5
714	38	91	1.0	5
715	103	102	0.8	5
716	107	115	1.2	10
717	49	116	1.0	5
718	30	145	0.8	5

Certified by



MIN-EN Laboratories Ltd.*Specialists in Mineral Environments*

705 WEST 15th STREET NORTH VANCOUVER, B.C. CANADA V7M 1T2

PHONE: (604)980-5814 OR (604)988-4524

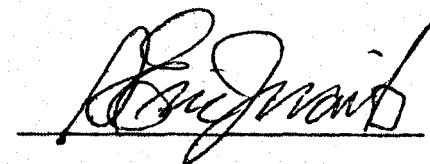
TELEX: 04-352828

GEOCHEMICAL ANALYSIS CERTIFICATECOMPANY: INTERNATIONAL TILLEX/J.R. POLONI
PROJECT:
ATTENTION: J.R. POLONIFILE: 5-2188/P5
DATE: JUNE 12/85
TYPE: SOIL GEOCHEM

We hereby certify that the following are the results of the geochemical analysis made on 30 samples submitted.

SAMPLE NUMBER	CU PPM	ZN PPM	AG PPM	AU PFB
719	28	82	0.8	10
720	27	66	0.7	5
721	20	46	0.8	5
722	18	43	0.6	5
723	18	42	0.6	<5
724	14	46	0.6	20
725	16	49	0.6	5
726	14	46	0.6	5
727	13	46	0.7	10
728	14	60	0.6	5
729	20	52	0.7	10
730	20	55	0.6	30
731	13	38	0.6	10
732	16	39	0.6	5
733	28	44	0.8	5
734	12	58	0.6	5
735	21	80	0.8	5
736	14	69	0.7	<5
739	54	93	0.9	5
740	20	164	0.6	5
741	12	81	0.4	5
742	18	90	0.8	10
743	37	110	0.6	5
744	46	124	1.0	10
745	58	85	1.1	5
746	27	70	1.0	5
747	36	74	1.2	5
748	52	75	1.0	10
749	46	78	1.2	5
750	90	110	1.1	15

Certified by



MIN-EN Laboratories Ltd.
Specialists in Mineral Environments
 705 WEST 15th STREET NORTH VANCOUVER, B.C. CANADA V7M 1T2

PHONE: (604) 980-5814 OR (604) 988-4524

TELEX: 04-352828

GEOCHEMICAL ANALYSIS CERTIFICATE

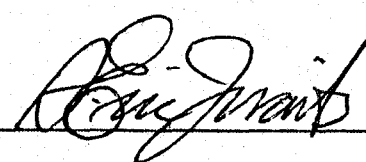
COMPANY: INTERNATIONAL TILLEX/J.R. POLONI
 PROJECT:
 ATTENTION: J.R. POLONI

FILE: 5-2185/P6
 DATE: JUNE 12/85.
 TYPE: SOIL GEOCHEM

We hereby certify that the following are the results of the geochemical analysis made on 30 samples submitted.

SAMPLE NUMBER	CU PPM	ZN PPM	AG PPM	AU PPB
751	54	64	1.1	5
752	66	100	0.9	5
753	74	87	1.0	10
754	61	80	1.0	5
755	82	96	1.2	5
756	16	150	0.8	5
757	14	80	0.6	10
758	20	112	0.8	<5
759	20	90	0.6	5
760	14	100	0.6	10
761	26	94	0.6	5
762	24	90	0.8	5
763	25	80	0.8	5
764	32	108	0.5	10
765	35	79	0.7	5
766	25	104	0.6	5
767	24	85	0.4	<5
768	32	111	0.7	10
769	35	94	0.6	10
770	36	138	0.8	5
771	23	116	0.4	5
772	18	122	0.4	5
773	42	78	0.5	10
774	26	96	0.8	5
775	21	72	0.8	5
776	27	114	0.9	5
777	30	50	0.6	5
778	30	86	0.8	10
779	23	72	0.6	5
780	24	62	0.8	5

Certified by



MIN-EN Laboratories Ltd.
Specialists in Mineral Environments
705 WEST 15th STREET NORTH VANCOUVER, B.C. CANADA V7M 1T2

PHONE: (604) 980-5814 OR (604) 988-4524

TELEX: 04-352828

GEOCHEMICAL ANALYSIS CERTIFICATE

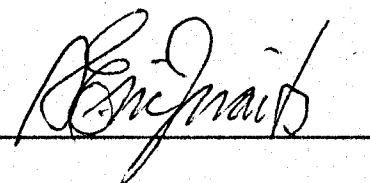
COMPANY: INTERNATIONAL TILLEX/J.R. POLONI
PROJECT:
ATTENTION: J.R. POLONI

FILE: 5-2185/P7
DATE: JUNE 12/85.
TYPE: SOIL GEOCHEM

We hereby certify that the following are the results of the geochemical analysis made on 6 samples submitted.

SAMPLE NUMBER	CU PPM	ZN PPM	AG PPM	AU PPB
781	26	48	0.8	10
782	22	86	0.9	5
783	19	65	0.6	10
784	20	62	0.6	5
785	14	78	0.6	5
786	17	58	0.5	10

Certified by



1512B - 56th Street
Delta B.C.
V4L 2A8

November 28, 1984
Invoice No. 84 - 47

International Tillex Enterprises Ltd.
1313 West Pender Street
Vancouver B.C.
V6E 2V9

Re: Italy Group

Dear Sir:

Disbursements

Motel	\$ 535.06	
Fuel	358.67	
Food	485.20	
Flagging	37.45	
Paper	13.27	
Sample Bags	204.00	
Auto	100.00	
Truck 4 x 4	540.00	
Min En Labs	5695.85	
My Secretary	69.00	
Binders & plastics	15.00	
Prints	82.80	
J.W. Drafting	<u>704.90</u>	
	\$8841.20	\$8841.20

pd. Feb 84

Professional Services

Ed Carson

Truck \$ 75.00

Wages 562.50 \$ 637.50

Jeffery Poloni Nov 11 - 20 9 days @ \$200.00 1800.00

Alan Raven Nov 11 - 20 9 days @ \$200.00 1800.00

John R. Poloni P. Eng.

Nov 11 - 20 9 days \$ 3600.00

Geochem - Geology

Report & Consulting \$ 3500.00

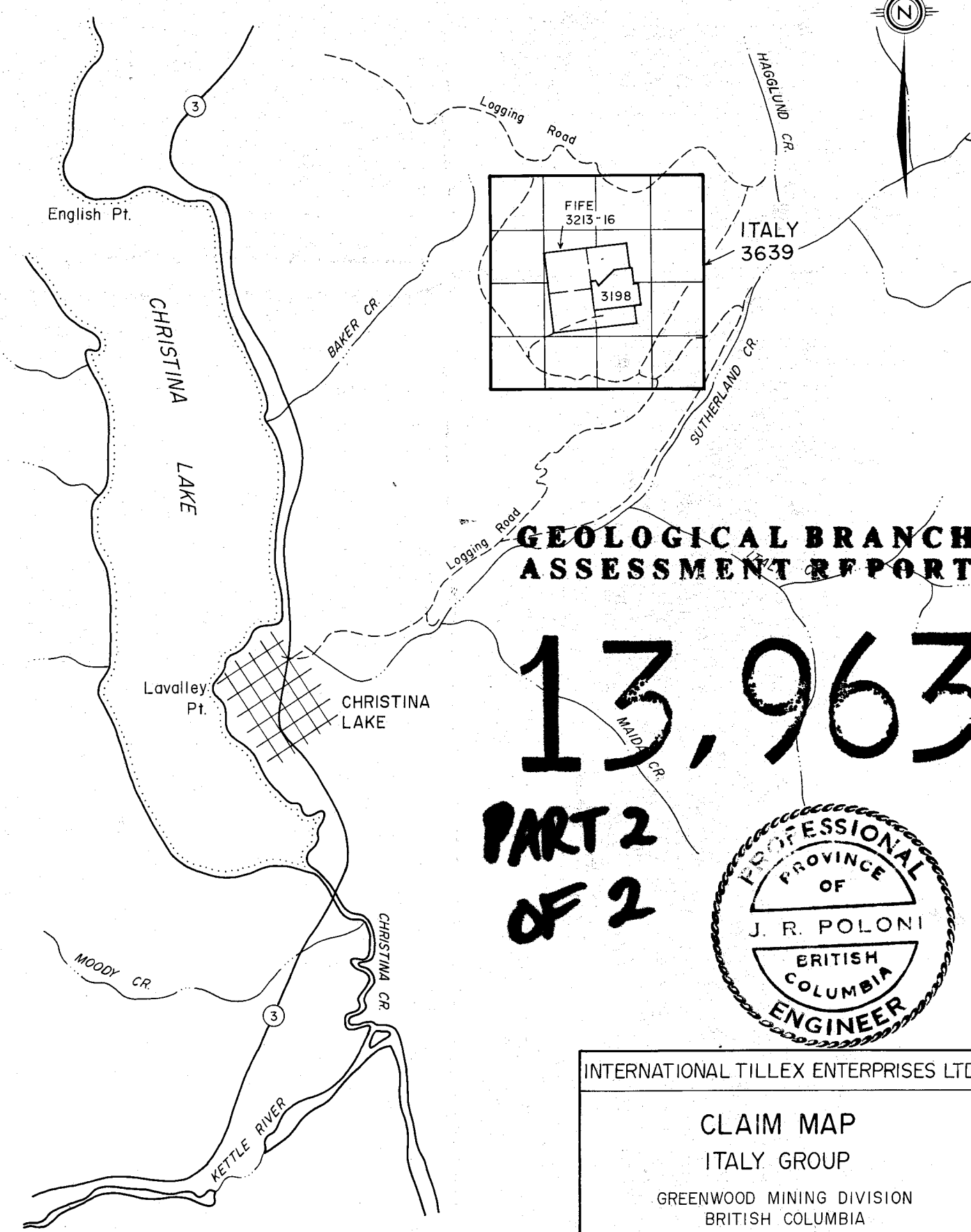
Thus Total Invoice ADVANCE \$10000.00

TOTAL \$20187.70

Thus Amount Owing \$10187.70

Respectfully Submitted

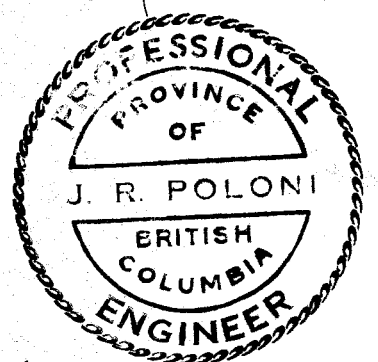
John R. Poloni P. Eng.



**GEOLOGICAL BRANCH
ASSESSMENT REPORT**

13,963

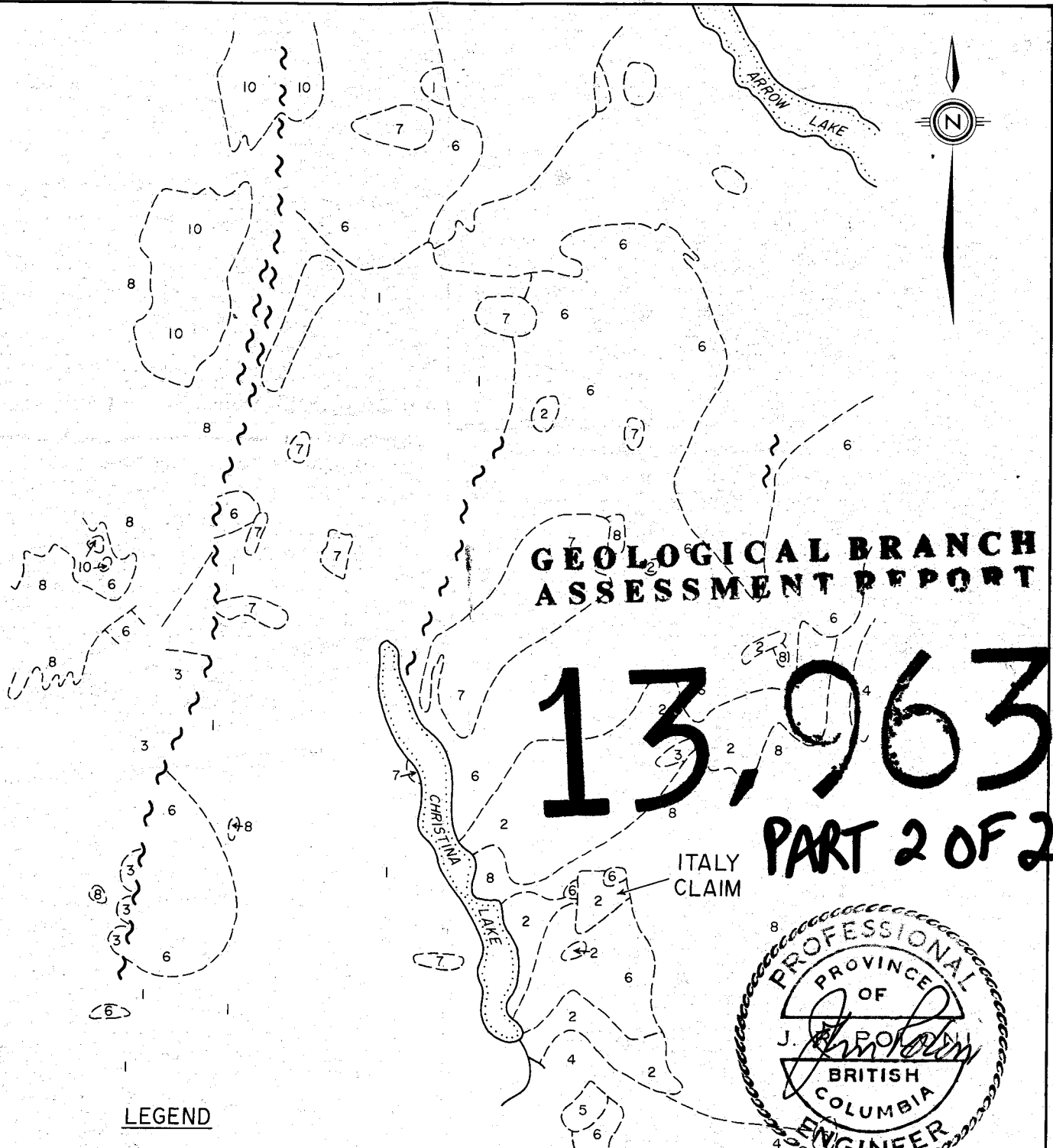
**PART 2
OF 2**



INTERNATIONAL TILLEX ENTERPRISES LTD.
CLAIM MAP
ITALY GROUP
GREENWOOD MINING DIVISION
BRITISH COLUMBIA

JOHN R. POLONI & ASSOCIATES LTD.

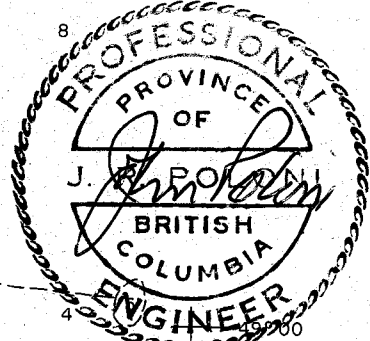
Drawn : J.R.P.	Checked : J.R.P.	Plan No.
Scale : 1:50 000	Date : July 3, 1985	2



**GEOLOGICAL BRANCH
ASSESSMENT REPORT**

13,963
PART 2 OF 2

ITALY CLAIM



118° 00

LEGEND

- 10 PHOENIX VOLCANIC GP - ANDESITE TUFF ETC.
- 8 CORYELL INTRUSIONS
- 7 VALHALLA INTRUSIONS
- 6 NELSON INTRUSIONS
- 5 ULTRABASIC ROCKS
- 4 ROSSLAND GP - ANDESITE, LATITE
- 3 ANARCHIST GP - GREENSTONE, L. S.
- 2 MOUNT ROBERTS FORMATION, L. S. GREYWACKE GREENSTONE, PARAGNEISS
- 1 MONASHEE, PARAGNEISS, CRYSTALLINE L. S. PEGMATITE

~ ~ FAULT ZONE

REF. MAP 6 - 1957 KETTLE RIVER

INTERNATIONAL TILLEX ENTERPRISES LTD.		
GEOLOGICAL PLAN ITALY GROUP GREENWOOD MINING DIVISION BRITISH COLUMBIA		
JOHN R. POLONI & ASSOCIATES LTD.		
Drawn : J.R.P.	Checked : J.R.P.	Plan No.
Scale : 1 in. = 4 mi.	Date : July 3, 1985	3

1200 E 1300 E 1400 E 1500 E 1600 E 1700 E 1800 E 1900 E 2000 E 2100 E 2200 E 2300 E 2400 E 2500 E 2600 E 2700 E 2800 E 2900 E 3000 E



- GEOLOGY**
- 1 COARSE GRAINED GRANITIC INTRUSIVE
GREY, UNIFORM MEDIUM-COARSE TEXTURED
 - 2 FINE GRAINED GRANITIC INTRUSIVE
GREY, UNIFORM MEDIUM-COARSE TEXTURED
 - 3 MT. ROBERTS FORMATION
METAMORPHIC UNIT (META VOLCANICS, META SEDIMENTS)
BASIC TO ULTRABASIC, PY, PYRR, MAG
- N.B. GROUND SNOW COVERED, NOT FROZEN DETAILED GEOLOGY
FOLLOW-UP REQUIRED FOR CONTACTS, DESCRIPTION ETC.
- GEOLOGICAL CONTACT ASSUMED

Rock Samples	Location	Description	ASSAY DATA			
			Cu	Zn	Ag	Au
R No 1	10500N, 2900E	SIL VOLC PY, PYRR	440	30	11	5
R No 2	10150N, 2250E	SIL VOLC PY, PYRR, MAG	810	36	0.8	5
R No 3	9900N, 2100E	SCARN, META VOLC, GOSSAN PY, PYRR	2100	22	5.8	85
R No 4	9550N, 2350E	SIL VOLC PY, PYRR	540	42	1.0	5
R No 5	9550N, 2250E	MAG SHOWING GOSSAN, SIL VOLC, SCARN PY, PYRR, G	890	33	1.4	15
R No 6	AS ABOVE P17	AS ABOVE P17	540	23	1.7	5
R No 7	AS ABOVE P17	AS ABOVE P17	2400	49	1.9	5

GEOLOGICAL BRANCH ASSESSMENT

LEGEND

- TRENCH
- SHAFT
- PIT
- ROAD

13,963

PART 2 OF 2

PROFESSOR
J. R. POLONI
BRITISH COLUMBIA
ENGINEER

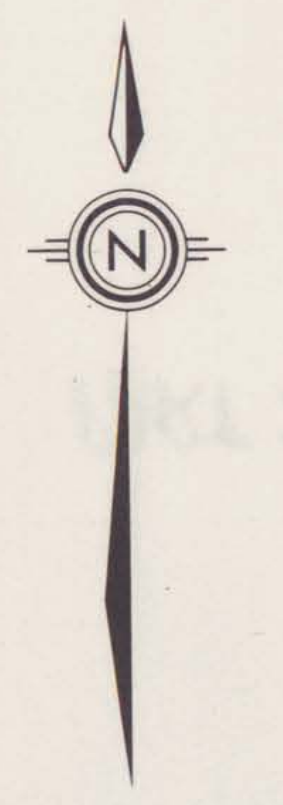
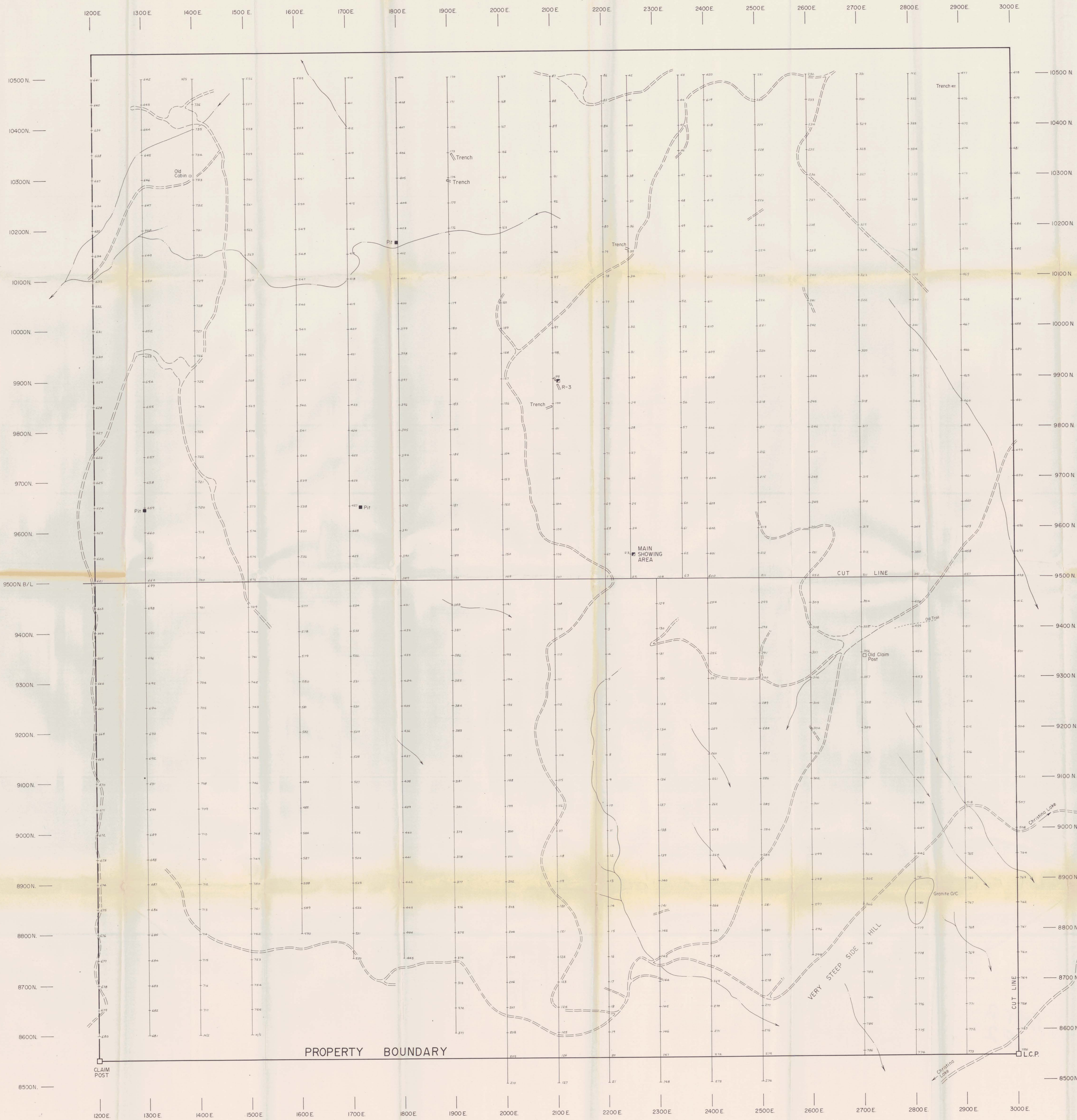
INTERNATIONAL TILLEX ENTERPRISES INC.

ITALY GROUP GEOLOGY PLAN

GREENWOOD MINING DIVISION
BRITISH COLUMBIA

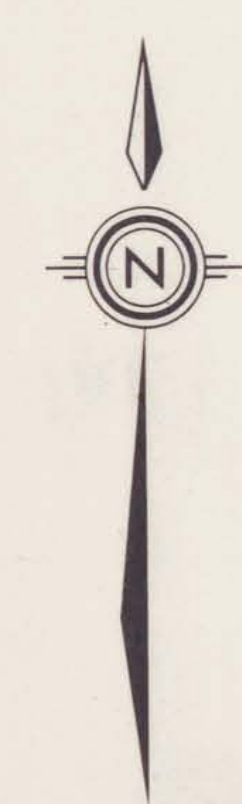
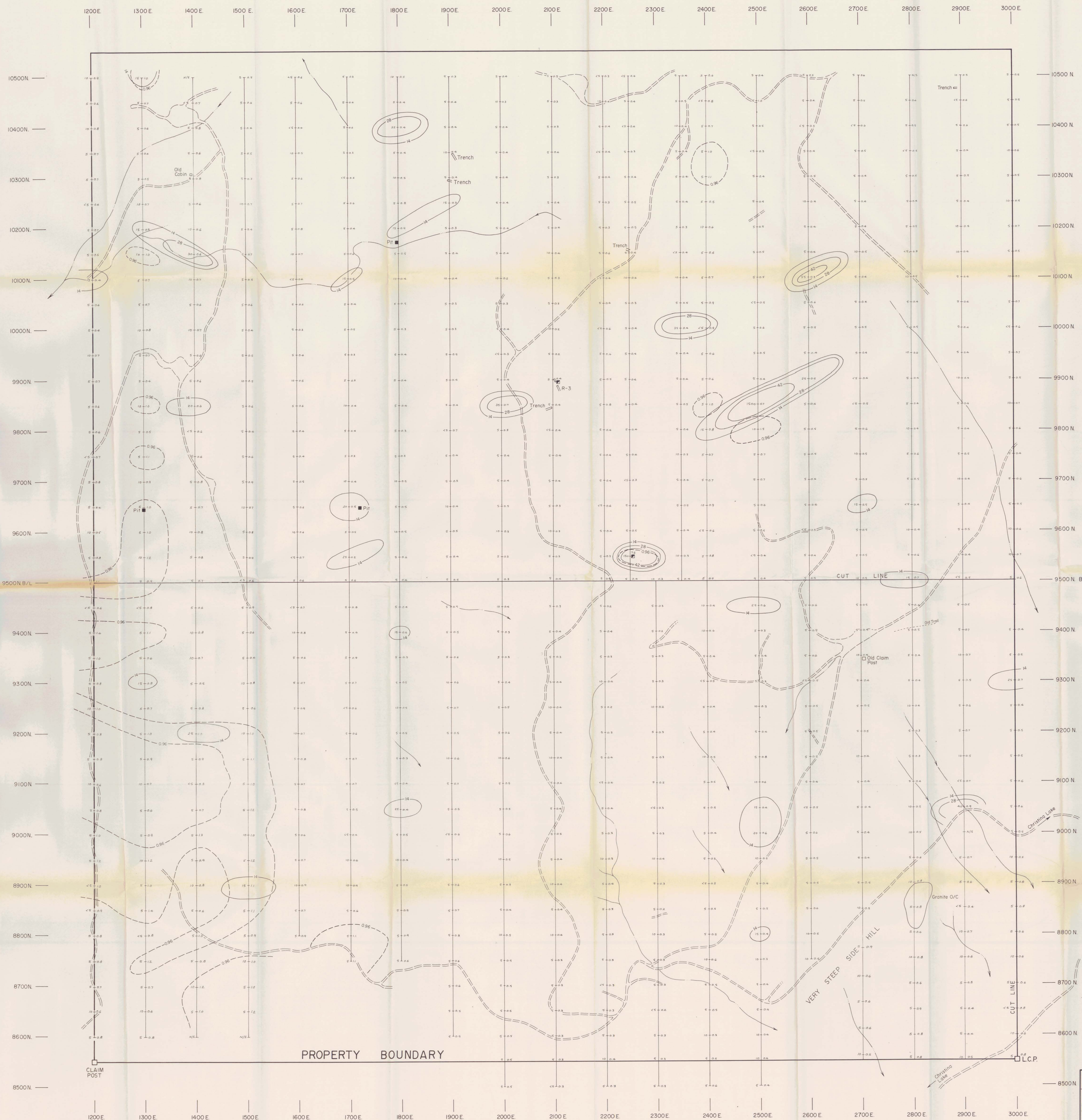
JOHN R. POLONI & ASSOCIATES LTD.

DRAWN	J. R. P.	CHECKED	J. R. P.	PLAN No.
SCALE	1:2500	DATE	JULY 3, 1985	5



GEOLOGICAL BRANCH
 ASSESSMENT REPORT
13,963
 LEGEND
 PIT
 ROAD
 L.C.P.
PART 2 OF 2

INTERNATIONAL TILLEX
 ENTERPRISES INC.
ITALY GROUP
SAMPLE LOCATION PLAN
 GREENWOOD MINING DIVISION
 BRITISH COLUMBIA
 JOHN R. POLONI & ASSOCIATES LTD.
 DRAWN: J.R.P. CHECKED: J.R.P. PLAN No.
 SCALE: 1:2500 DATE: JULY 3, 1985 4



ANOMALOUS PARAMETERS

GOLD PPB	MEAN	6.89 PPB
	ANOMALOUS	14.0 PPB
SILVER PPM	MEAN	0.46 PPM
	ANOMALOUS	0.96 PPM

GEOLOGICAL BRANCH ASSESSMENT P-13963

LEGEND

- TRENCH
- SHAFT
- PIT
- - - ROAD

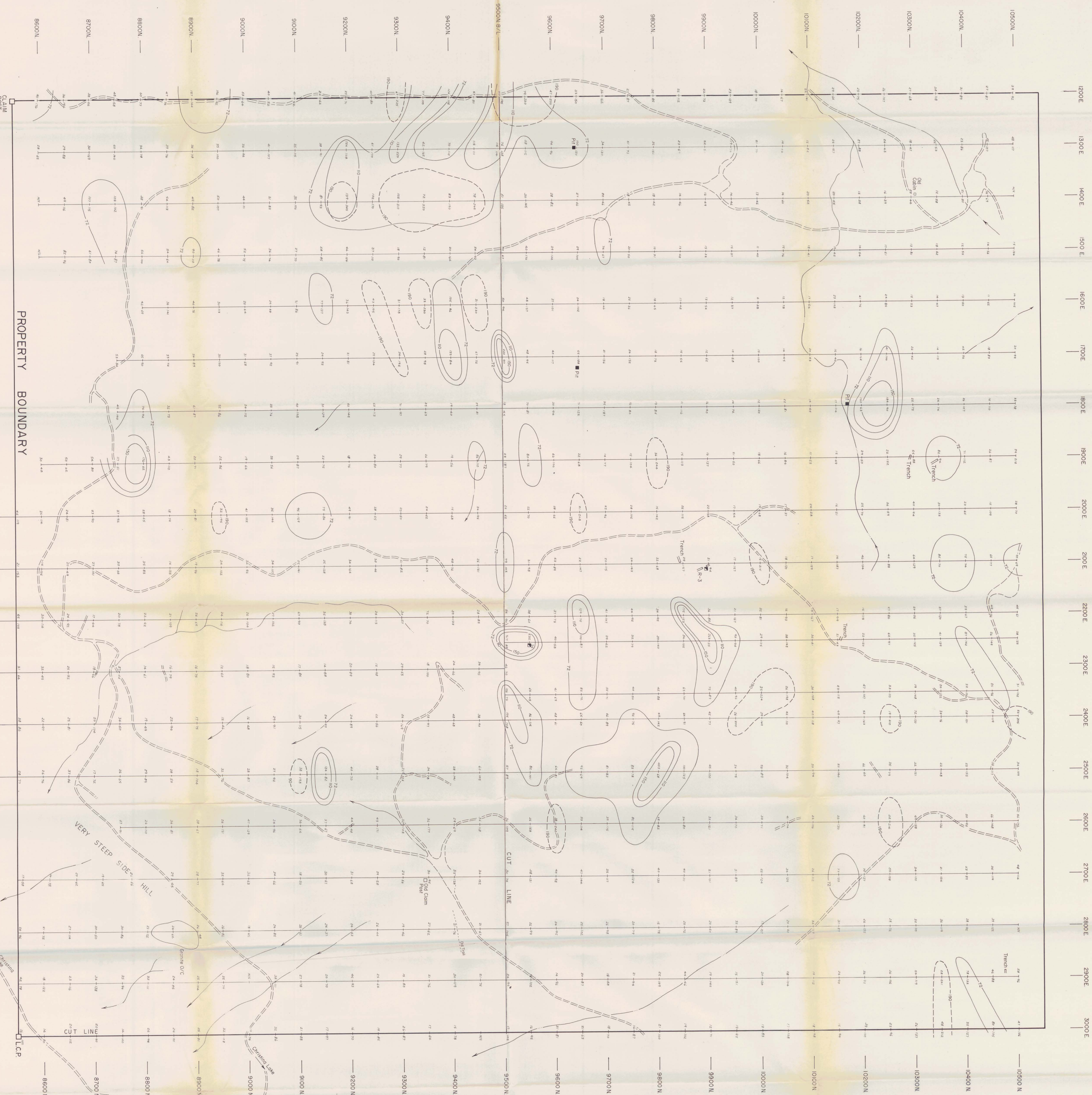
13,963

PART 2 OF 2

INTERNATIONAL TILLEX ENTERPRISES INC.
 ITALY GROUP
SOIL GEOCHEMICAL PLAN
 GOLD PPB-SILVER PPM
 GREENWOOD MINING DIVISION
 BRITISH COLUMBIA

JOHN R. POLONI & ASSOCIATES LTD.

DRAWN	J. R. P.	CHECKED	J. R. P.	PLAN No.
SCALE	1:2500	DATE	JULY 3, 1985	6



ANOMALOUS PARAMETERS
 COPPER 3000 MG/G
 ZINC 10000 MG/G
 ANOMALOUS 20.0 PPM
 ANOMALOUS 80.0 PPM

LEGEND
 TRENCH
 SHAFT
 PIT
 ROAD

13,963
ASSASSIN BRANCH
GEOLOGICAL BRANCH
ASSESSMENT REPORT
PART 2 OF 2

INTERNATIONAL TILLEX
ITALY GROUP
ENTERPRISES INC.

JOHN R. POLONI & ASSOCIATES LTD.
 BRITISH COLUMBIA
 GREENWOOD MINING DIVISION

PROFESSIONAL ENGINEER
REGISTERED
BRITISH COLUMBIA

SOIL GEOCHEMICAL PLAN
COPPER PPM - ZINC PPM

DRAWN: J.R.P.
 CHECKED: J.R.P.
 DATE: JULY 3, 1985
 SCALE: 1:2500
 PLAN NO: 7