

85-845 -
14156

REPORT ON PHYSICAL WORK

11/86

conducted on the

METSANTAN 1 CLAIM

NTS 94-E-6W

Latitude 57°25' North

Longitude 127°20' West

Omineca Mining Division

British Columbia

25 October 1985

**GEOLOGICAL BRANCH
ASSESSMENT REPORT**

14,156

on behalf of

PART

BART RESOURCES LTD.

Vancouver, B. C.

1 OF 2

by

TAIGA CONSULTANTS LTD.

Calgary, Alberta

INTRODUCTION

A trenching program was completed on the Metsantan 1 Claim during August, 1985. This work comprised cleaning out portions of the existing trenches (T/82-2, 82-13, 82-14, 82-15, and 82-16) on the Ridge Zone; the use of a John Deere 450 tractor to partially clean out T/82-17 on the Central Silver Zone; and the completion of twelve new trenches with the use of a backhoe (B-85-1 to B-85-12, inclusive).

TRENCHING PROGRAM

The backhoe trenching program commenced on August 14, 1985, and was completed on August 17. The tractor was 'walked' in from the adjoining Mets property, and was returned there at the end of the program. During this period, 12 trenches totalling 200 metres in length and averaging 1.5 metres in depth and 1.0 to 1.5 metres in width were completed. The locations of the trenches are illustrated on the attached map at a scale of 1:5,000.

The unusually late arrival of assay data in conjunction with the early onset of winter conditions prevented the filling-in of the trenches during this program.

Although all of the trenches are located above treeline, a site reclamation program is planned for the summer of 1986.

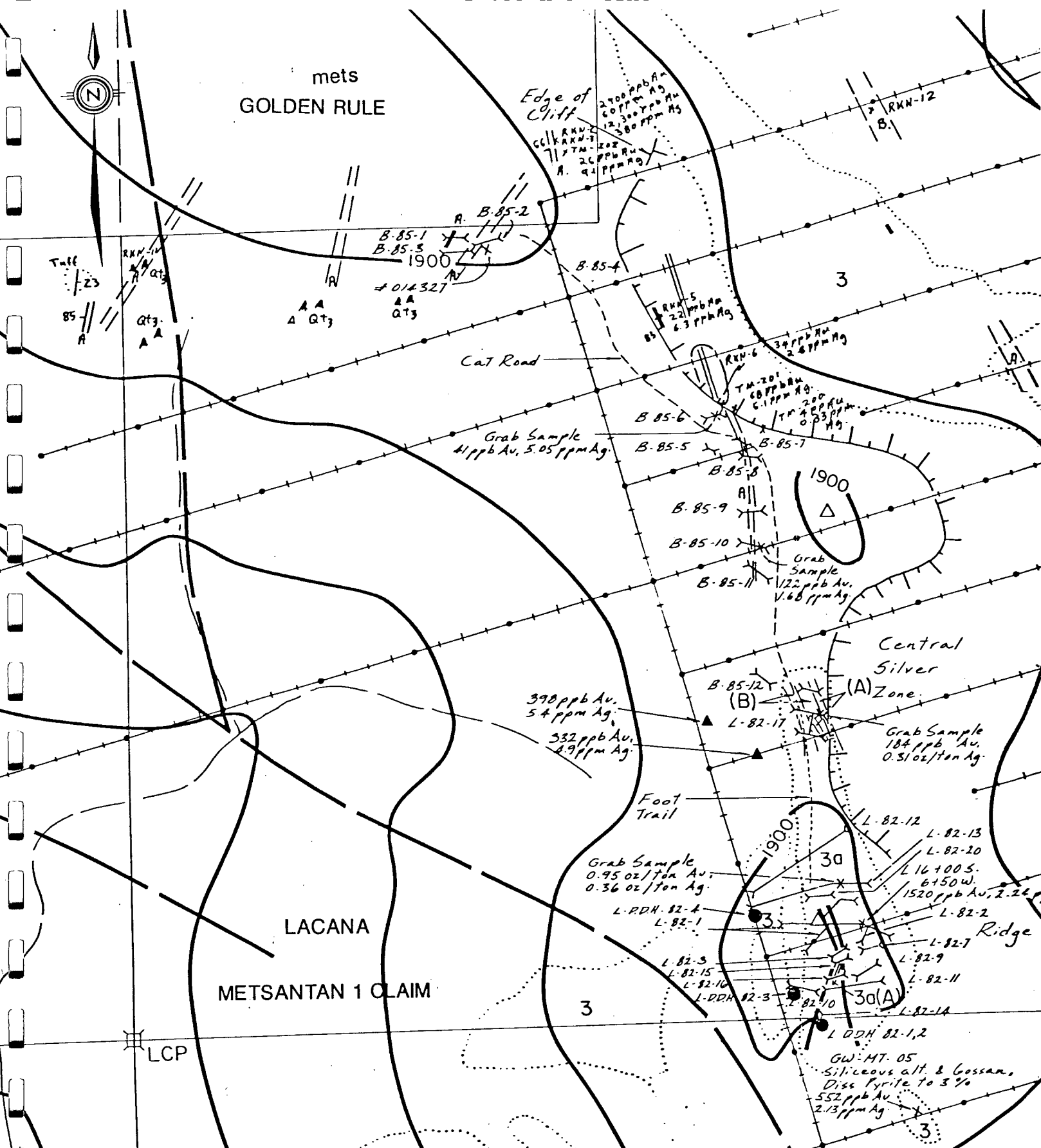
Subsequent to the backhoe excavations, the trenches were further cleaned by hand tools to enable proper sampling and mapping.

Of the previous Lacana trenches, only one was re-furbished with the backhoe (T/82-17). This site will also require minor reclamation.

SUMMARY OF EXPENDITURES

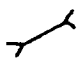
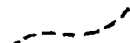
Professional Fees & Supervision	\$ 350.00
Field Personnel: wages & benefits	2,000.00
Food & Camp Accommodation	525.00
Equipment Rentals	30.00
Travel Expenses	500.00
Disposable Supplies	200.00
Fixed-wing Aircraft Support	300.00
Helicopter Support	1,800.00
Tractor/Backhoe Rental	<u>3,250.00</u>
TOTAL	\$ 8,955.00

PERMIT TO PRACTICE TAIGA CONSULTANTS LTD.	
Signature	<i>[Handwritten Signature]</i>
Date	<i>Nov 8/85</i>
PERMIT NUMBER: P 2399	
The Association of Professional Engineers, Geologists and Geophysicists of Alberta	



TRENCH LOCATION MAP
METSANTAN 1 CLAIM

N.T.S. 94-E-6 W
Omineca Mining
Division
Scale 1:5000

-  Trench
- B-85-1** 1985 backhoe trench
- L-82-2** 1982 Lacana hand trench
-  tractor trail