

85-977-14191
10/86

**GEOLOGICAL BRANCH
ASSESSMENT REPORT**

14,191

R E P O R T O N G E O C H E M I C A L S U R V E Y

CLAIMS : PARIS 1, Record No. 1960
PARIS 2, Record No. 1961

MINING DIVISION : FORT STEELE

N.T.S. : 82F/9E

LATITUDE : 49°31'N

LONGITUDE : 116°03'W

OWNER/OPERATOR : IMPERIAL METALS CORPORATION

AUTHOR : I.R. CORVALAN, P. ENG.

DATE : OCTOBER 1985

FILMED

TABLE OF CONTENTS

	<u>PAGE</u>
INTRODUCTION	
Location and Access	1
Property	1
History	2
Physiography	2
Geology	2
Summary of Work Done	4
GEOCHEMICAL SURVEY	4
SURVEY GRID	4
Sample Analysis	4
Conclusions and Recommendations	5
BIBLIOGRAPHY	6
ANNEX #1: Statement of Expenditures	
ANNEX #2: Affidavit	
ANNEX #3: Statement of Qualifications	
ANNEX #4: Geochemical Results	
FIGURE #1: Location Map	
FIGURE #2: Claim Map	
FIGURE #3: Regional Geology	
FIGURE #4: Sample Results	In Pocket

INTRODUCTION

Location and Access :

The Paris Claim Group (40 units) is located about 18 km south of Kimberly, B.C. and about 18 km west of Cranbrook, B.C. Elevations range from 1,220 meters to 1,980 meters. Geographic coordinates are Latitude 49°31'N and Longitude 116°03'W. Access to the claim area is generally good. A gravel road leaves the highway #95A at Wycliffe Regional Park, about 15 km northwest of Cranbrook, B.C. and runs westerly along Perry Creek (Figure #1).

Property :

The property consists of two 20 unit mineral claims held by Imperial Metals Corporation, Vancouver, B.C. (see Figure #2).

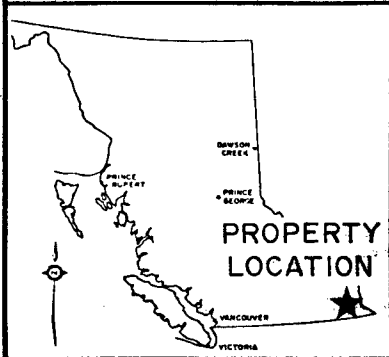
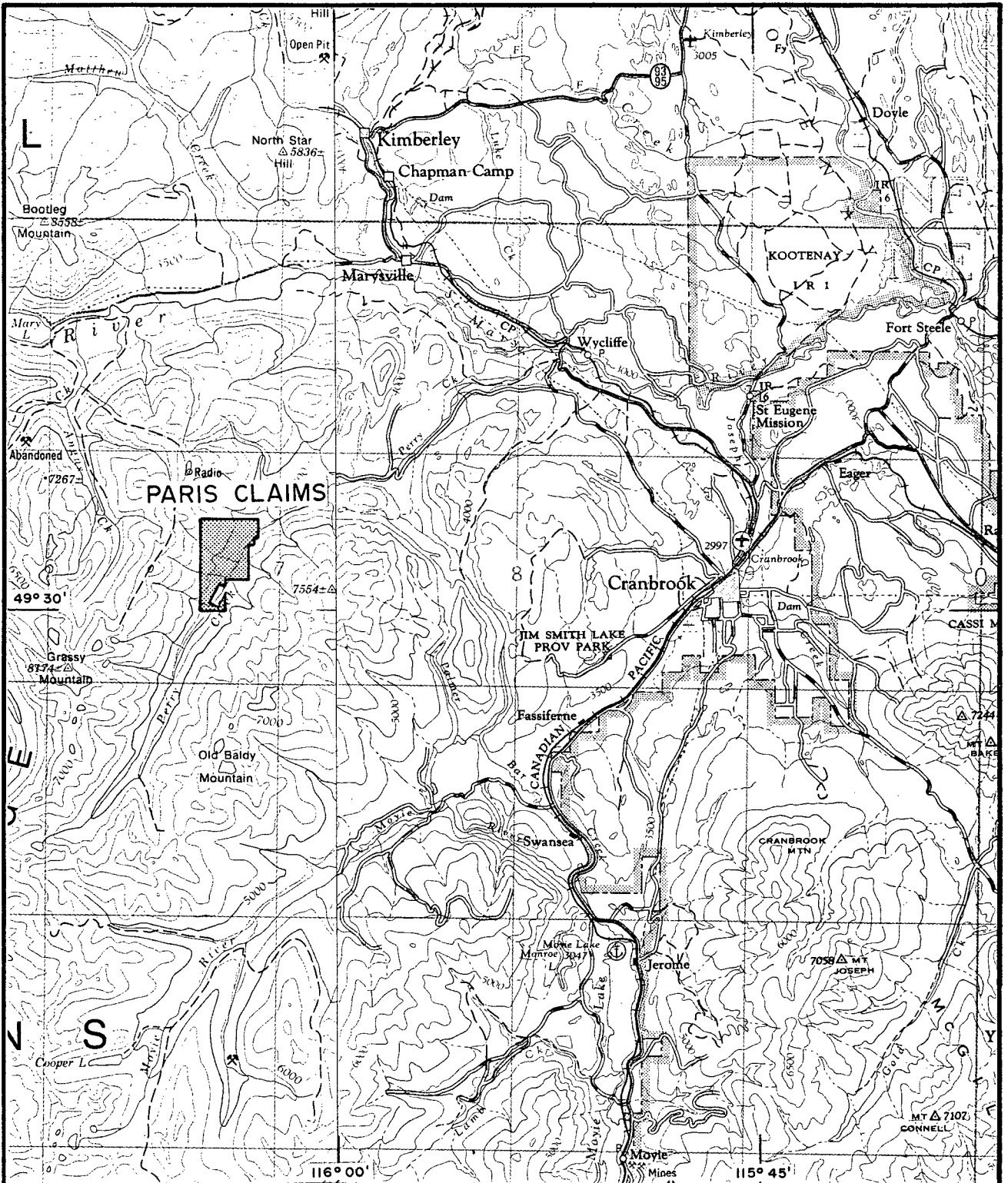
<u>Claim Name</u>	<u>Record No.</u>	<u>Units</u>	<u>Expiry Date</u>
Paris 1	1960	20	October, 1985
Paris 2	1961	20	October, 1985

History :

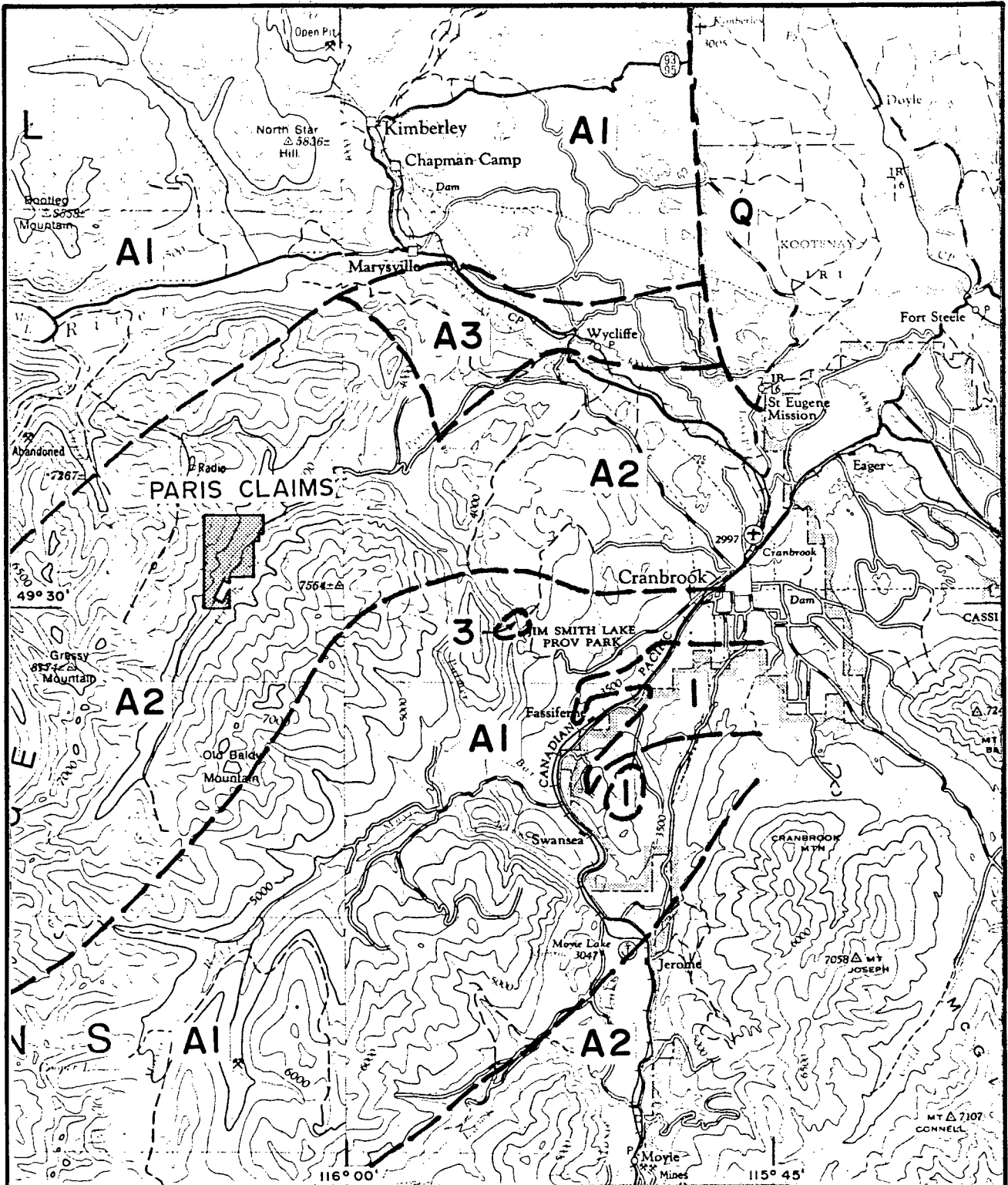
The first recorded mining activity along Perry Creek dates back to the 1850's. During that time period extensive placer mining took place and since then Perry Creek has been one of the richest placer gold creeks of the East Kootenay area.

After the initiation of placer mining the search for the source of gold began. By 1898 numerous claims had been located along the slopes of Perry Creek. The results obtained were erratic and disappointing and most of the claims were abandoned as uneconomic.

During 1916 renewed interest in gold quartz led to the investigation of the Homestake, Columbia and Yellow Metal Veins. Large quartz ledges returned uneconomic lenses and veinlets showed low grade gold values.



IMPERIAL METALS CORPORATION	
PARIS CLAIMS	
FIGURE 1	N.T.S. 82F & G
LOCATION MAP	
SCALE: 1:250 000	GEOLOGIST: I.R. CORVALAN
DATE: OCTOBER 1985	DRAWN BY: S. HAWORTH



LEGEND

- | | | |
|----|-------------------------------|-------------|
| Q | Stratified Clay & Sand | QUATERNARY |
| 3 | Granite & Porphyritic Granite | JURASSIC(?) |
| I | Purcell Sills | |
| A3 | Kitchener Formation | PRECAMBRIAN |
| A2 | Creston Formation | |
| A1 | Aldridge Formation | |

IMPERIAL METALS CORPORATION

PARIS CLAIMS

FIGURE 3

N.T.S. 82F & G

REGIONAL GEOLOGY



SCALE: 1 : 250 000

GEOLOGIST: I. R. CORVALAN

DATE: MAY 1984

DRAWN BY: S. HAWORTH

From 1932 to 1977 exploration conducted in the area was sporadic, but in 1973 a production of 1,373 tons of ore containing 0.26oz/ton Au, 0.2oz/ton Ag was shipped to smelter from the Quartz Hill showing.

From 1977 to 1981 exploration programs consisting of prospecting, soil sampling, geological mapping and geophysical surveys have been carried out by Gallant Gold Mines in claims located south and north from the Paris claims. Results of these programs, although producing sporadic gold values in soils, did not discover gold mineralization, but several shear zones parallel to the Perry Creek fault were identified. These shear zones have associated hydrothermal alteration and quartz lenses similar to that extracted from the Quartz Hill showings. During the 1983 exploration season, Imperial Metals carried out a stream sediment sampling along Perry Creek and tributaries. This work identified a continuous area of anomalous gold values more than 2 km long, between Paris and Glasgow Creeks. Two 20 unit claims were staked to protect the mentioned area.

Physiography:

Perry Creek is a tributary of St. Mary River. The valley slopes are steep to about 300m above the floor. Above this elevation the slopes flatten and tributary streams have well defined valleys of their own. Below, the tributaries have extremely steep gradients and are confined to young-appearing V-shaped valleys.

Geology:

Regional Geology

The regional geology of the claim area has been mapped by G.B. Leach (1960) and H.M.A. Rice (1941).

This area is underlain by the following formations: (Figure #3) H.M.A. Rice (1941).

- Unit 1 : Purcell Sills which consists of all graduations from gabbro to granite intrusive equivalents of Purcell Lava.
- Unit A3: Kitchener Formation - varicoloured argillites and dolomitic argillite.
- Unit A2: Creston Formation - grey and grey-weathering green, grey and purplish argillaceous quartzite.
- Unit A1: Aldridge Formation - rust weathering, grey quartzite, siltstone and argillite, grey weathering massive quartzite, metamorphosed equivalents.

Structure:

The general strike of the formation is about north-northeast with a dip of 40° northwest in the northwest sector of the creek. On the opposite side the dips appear to be to the east or southeast. The area is faulted along Perry and Sawmill Creeks.

Local Geology:

The claim areas are characterized by greenish quartzites, altered andesites and phylonites. Rocks of the area exhibit schistosity which is more or less concordant with the strike of the Perry Creek Fault.

Mineralization:

No mineral occurrence has been located within the claim area, but abundant mineralized quartz float was observed on Paisley and Paris Creeks. Within the Gallant Gold claims, south of the Paris claims, mineralization is related to massive quartz ledges and shear zones. The width of the mineralized areas range from a few inches to 40 feet and more. These ledges are persistent and extend to several kilometers. As their strike is parallel to that

of the formations, these structures must be found within the Paris claim group.

Summary of Work Done: (September 24-29)

Soil sampling: a total of 128 soil/silt samples were taken. All samples were assayed by the "Inductively Coupled Argon Plasma Method (ICP)" at the Acme Analytical Laboratories.

GEOCHEMICAL SURVEY

The objective of this survey was to follow up anomalous gold values identified during the 1984 exploration program and to silt sample Paisley Creek, an area that was not studied in that program.

SURVEY GRID

Paisley Creek:

Silt samples were taken every 250m, and soil samples were taken towards both slopes of the creek.

Baseline:

A 1,400m north-south baseline was blazed about 500m from the confluence of Dublin Creek into Perry Creek, and sample lines were established every 200m with a sample station every 25m.

Sample Analysis:

The samples were delivered to Acme Analytical Laboratories Ltd. Vancouver, B.C.

They were first dried and sieved to -80 mesh. The sulphide portion was digested using 3:1:3 (HU:HNO₃:H₂O) solution at 90°C

for one hour and then analysed by I.C.P. Gold was fire assayed from a half assay ton sample.

Interpretation:

The sampling carried out in Perry Creek was unable to identify gold anomalies detected on previous sampling. This lack of relation between soil and stream sediment sample result may be explained by the thick glacial overburden that covers the area.

Conclusion and Recommendations:

Soil sampling is not a useful prospecting tool when applied to the particular characteristics of the ground of these claims. It is recommended to investigate a way to sample below the glacial cover to try to find explanations for stream sediment anomalies in this area.

BIBLIOGRAPHY

- Hoy T. (1980) Reconnaissance stream geochemical survey, Moyie Lake Sheet (82G/W) Southeastern, B.C.
- Hoy T. (1982) "Stratigraphic and structural setting of stratabound lead-zinc deposits in southeastern B.C.", CIM Bulletin Vol. 75, No.80 pp. 114-134.
- Leech G.B. (1960) G.S.C. Map 11-1960
- Leech G.B. (1958) Fernie Map area, West half, B.C. G.S.C., pp. 58-70.
- McMechan M.E. (1978) "Geology of the Purcell super group between Wildhorse River and Sand Creek.
- Robinson M.C. (1965) Assessment Report #822, B.C.D.M.
- Schofield S.J. (1915) "Geology of Cranbrook Map Area British Columbia", Memoir 76, G.S.C.
- Corvalan I.R. (1984) Report on Geochemical Survey, Paris Claim Assessment Report B.C.D.M.

ANNEX #1

STATEMENT OF EXPENDITURE ON PARIS MINERAL CLAIM GROUP FOR 1985:

Field Costs (September 24- September 28)		
Geologist	(5 days @ \$200)	\$ 1,000.00
Geochem sampling & prosp.	(4 man day @ \$125/day)	500.00
Food	(3 days x 3 @ \$20/day)	180.00
Hotel	(3 days x 2 @ \$40/day)	240.00
Vehicle	(4 days @ \$50/day)	200.00
Gas		82.60
Report Preparation		
Research and Text preparation	(1 day @ \$200/day)	200.00
Map preparation	(1 day @ \$150/day)	300.00
Analysis: Soil geochem.	(216 samples @ \$10.60 ea.)	1,356.80
Report		<u>500.00</u>
		\$ 4,559.40

* 7 samples missing.

ANNEX #2

IN MATTER OF THE
B.C. MINERAL ACT

AND

IN MATTER OF A GEOCHEMICAL
PROGRAM CARRIED OUT ON THE

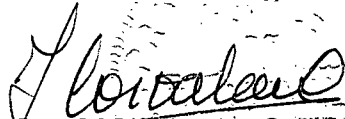
PARIS CLAIM GROUP

LOCATED IN THE NELSON MINING DIVISION
OF THE PROVINCE OF BRITISH COLUMBIA
MORE PARTICULARLY N.T.S. 82F/9E

A F F I D A V I T

I, I. RUBEN CORVALAN, P. ENG., OF THE DISTRICT OF NORTH VANCOUVER IN
THE PROVINCE OF BRITISH COLUMBIA, MAKE OATH AND SAY :

1. THAT I AM AN EMPLOYEE OF IMPERIAL METALS CORPORATION AND AS SUCH
HAVE A PERSONAL KNOWLEDGE OF THE FACTS TO WHICH I HEREINAFTER
DISPOSE;
2. THAT ANNEXED HERETO AND MARKED AS "ANNEX #1" IS A TRUE COPY OF
EXPENDITURES ON A GEOCHEMICAL PROGRAM CARRIED OUT ON THE PARIS
CLAIM GROUP;
3. THAT THE SAID EXPENDITURES WERE INCURRED WITHIN THE PERIODS
SEPTEMBER 24-29, 1985 FOR THE PURPOSE OF MINERAL EXPLORATION ON
THE ABOVE CLAIMS.


I. R. CORVALAN, P. ENG.

ANNEX #3

IMPERIAL METALS CORPORATION

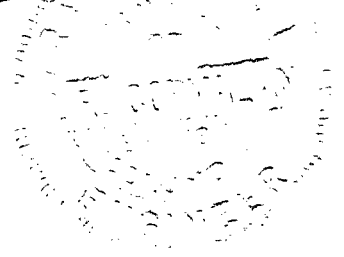
STATEMENT OF QUALIFICATIONS

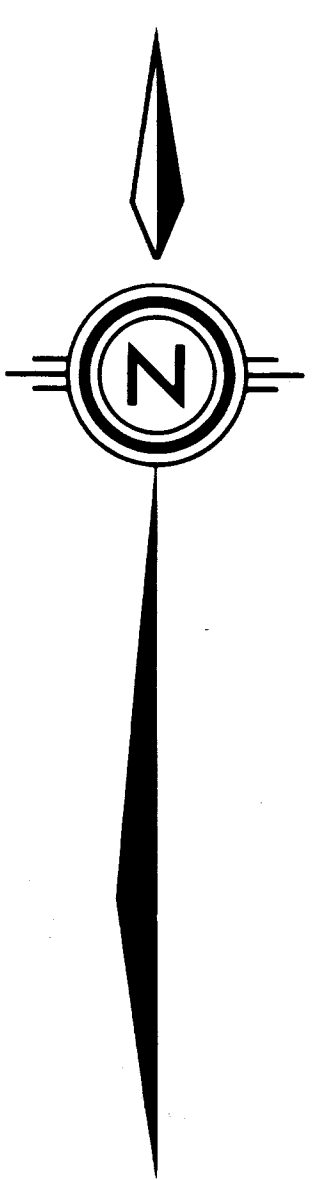
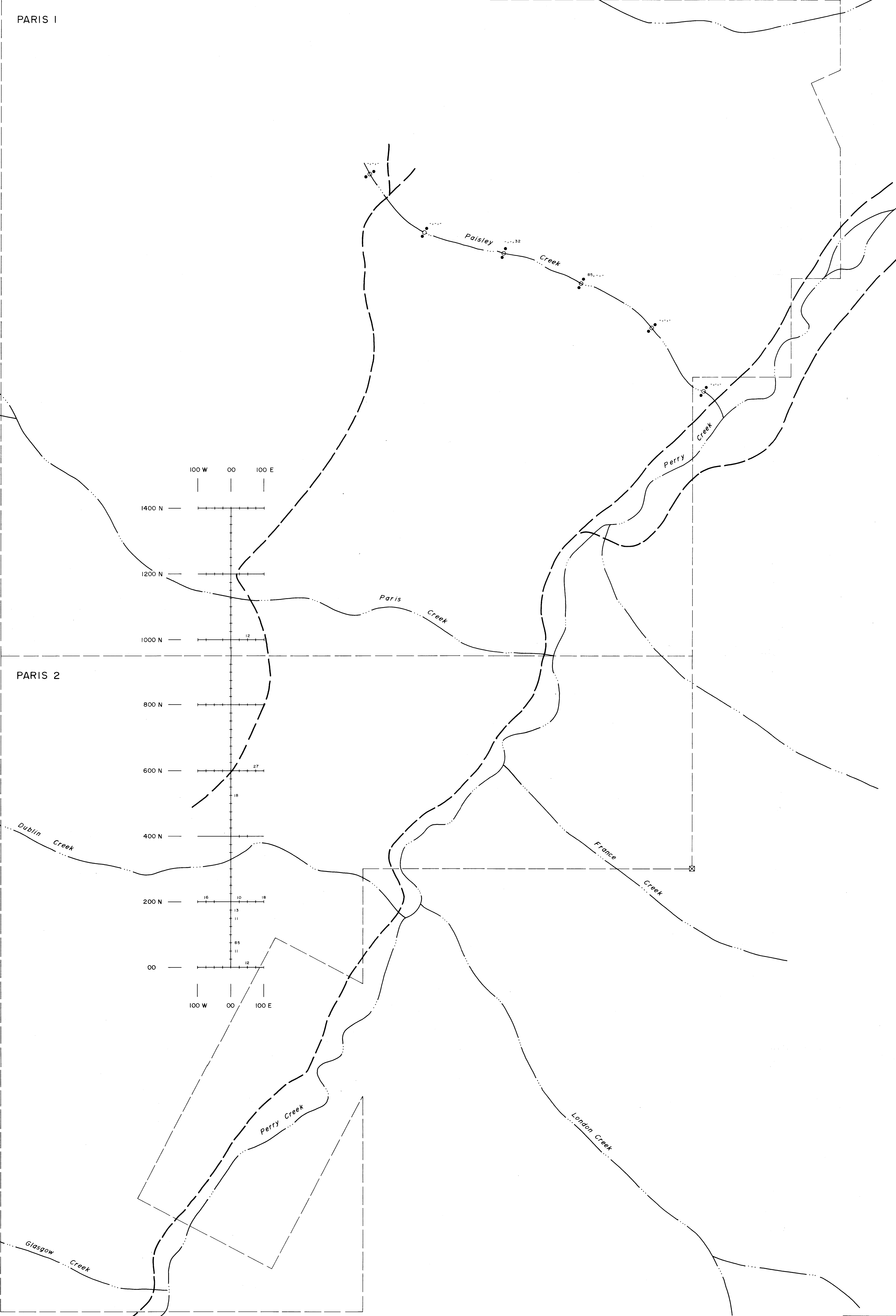
I, I. RUBEN CORVALAN, P. ENG. OF THE DISTRICT OF NORTH VANCOUVER, BRITISH COLUMBIA, HEREBY CERTIFY :

1. THAT I AM A PROFESSIONAL ENGINEER RESIDING AT #117 - 908 BERKLEY ROAD, NORTH VANCOUVER, BRITISH COLUMBIA;
2. THAT I GRADUATED WITH A MINING ENGINEERING DEGREE FROM THE UNIVERSITY OF CHILE, CHILE, IN 1969;
3. THAT I HAVE PRACTICED GEOLOGY AND GEOCHEMISTRY WITH EMPRESA NACIONAL DE MINERIA, SANTIAGO, CHILE FROM 1966 TO 1970, WITH CIMA RESOURCES LIMITED FROM 1980 TO SEPTEMBER 1982 AND WITH IMPERIAL METALS CORPORATION FROM MAY 1983 TO PRESENT.

DATED THIS 12 DAY OF Dec., 1985
AT VANCOUVER, BRITISH COLUMBIA.

SIGNED I. Corvalan
I.R. CORVALAN, P.ENG.





LEGEND

- Claim Post
- Claim Boundary
- Creek
- Road
- Geochemistry:**
- Silt Sample
- Soil Sample
- Soil Sample

NOTE: Values <10 ppb have not been plotted.

GEOLOGICAL BRANCH ASSESSMENT REPORT

14,191

IMPERIAL METALS CORPORATION
 PARIS CLAIMS
 FIGURE 4 N.T.S. 82F/9E

SAMPLE RESULTS

Metres 0 100 200 300 400

SCALE: 1:5000
 GEOLOGIST: R. CORVALAN
 DATE: DECEMBER 1985
 DRAWN BY: S. HAWORTH