

85-1014-14201
9/86

NTS 92F/2
Lat. 49°10'
Long. 124°45'

GEOCHEMICAL ASSESSMENT REPORT
ON THE
PAT 3 CLAIM

FILMED

Franklin River - China Creek Drainage
Port Alberni, British Columbia
Alberni Mining Division

Owner: William Poole

Operator: Victoria Diego Resource Corporation

GEOLOGICAL BRANCH
ASSESSMENT REPORT

14,201

by
Peter D. Leriche, Geologist
ASHWORTH EXPLORATIONS LIMITED

submitted
October 31, 1985

SUB-RECORDER
RECEIVED
DEC 23 1985
M.R. # \$
VANCOUVER, B.C.

CONTENTS

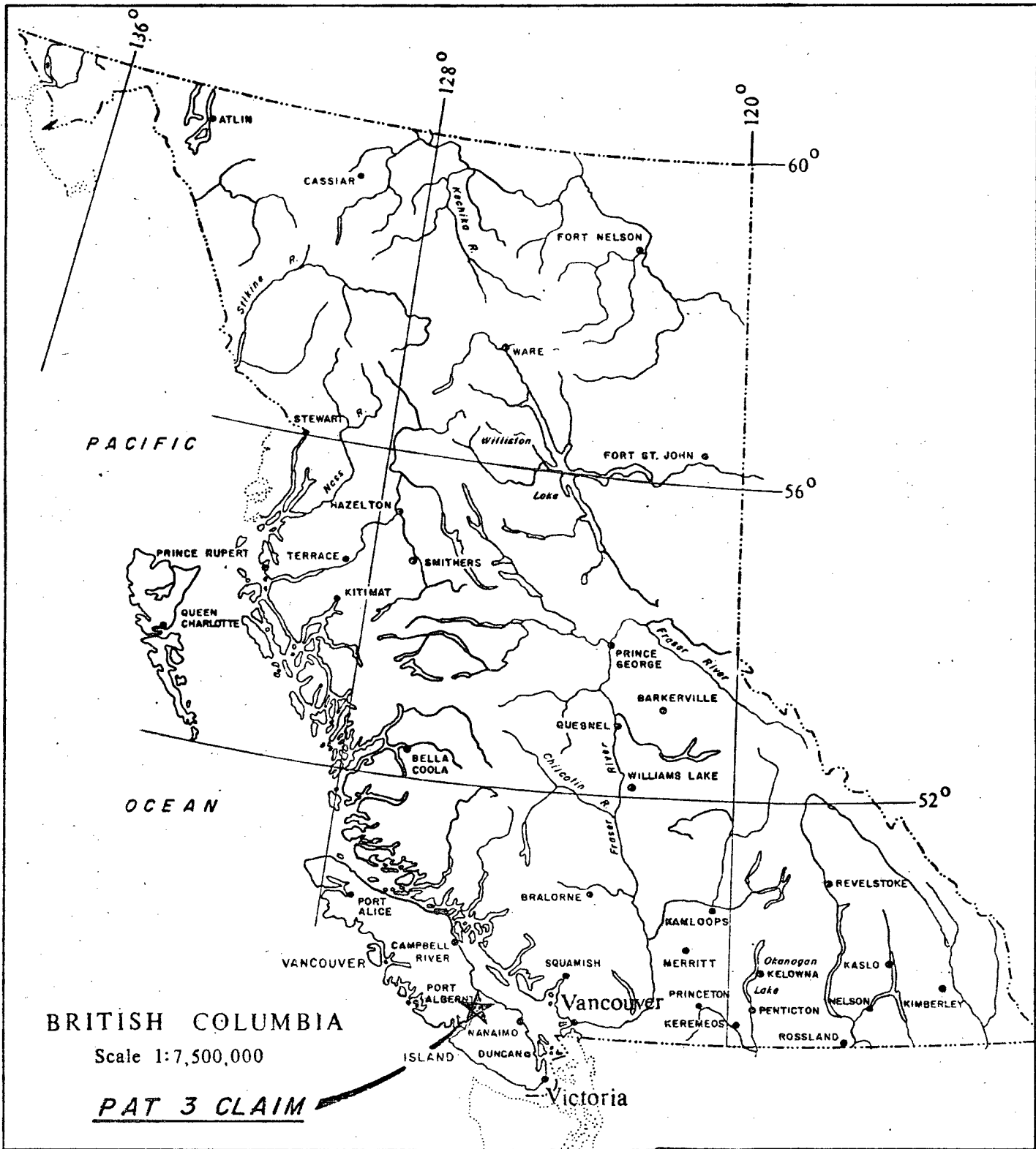
	<u>Page</u>
1. INTRODUCTION	1
2. LOCATION AND ACCESS	1
3. PHYSIOGRAPHY	1
4. HISTORY	1
5. PROPERTY STATUS	2
6. GEOLOGY - PROSPECTING	2
7. GEOCHEMISTRY	3
7.1 Field Procedures	3
7.2 Analytical Techniques	3
7.3 Results	3
7.4 Interpretation	4
8. CONCLUSIONS	5

APPENDICES

APPENDIX A	GEOCHEMICAL RESULTS
APPENDIX B	ITEMIZED COST STATEMENT
APPENDIX C	STATEMENT OF QUALIFICATIONS

LIST OF FIGURES

FIGURE 1	GENERAL LOCATION MAP
FIGURE 2	CLAIM LOCATION MAP
FIGURE 3	SAMPLE LOCATION AND GEOLOGY MAP (in pocket)
FIGURE 4	COPPER, LEAD, ZINC GEOCHEMISTRY (in pocket)
FIGURE 5	SILVER, GOLD GEOCHEMISTRY (in pocket)



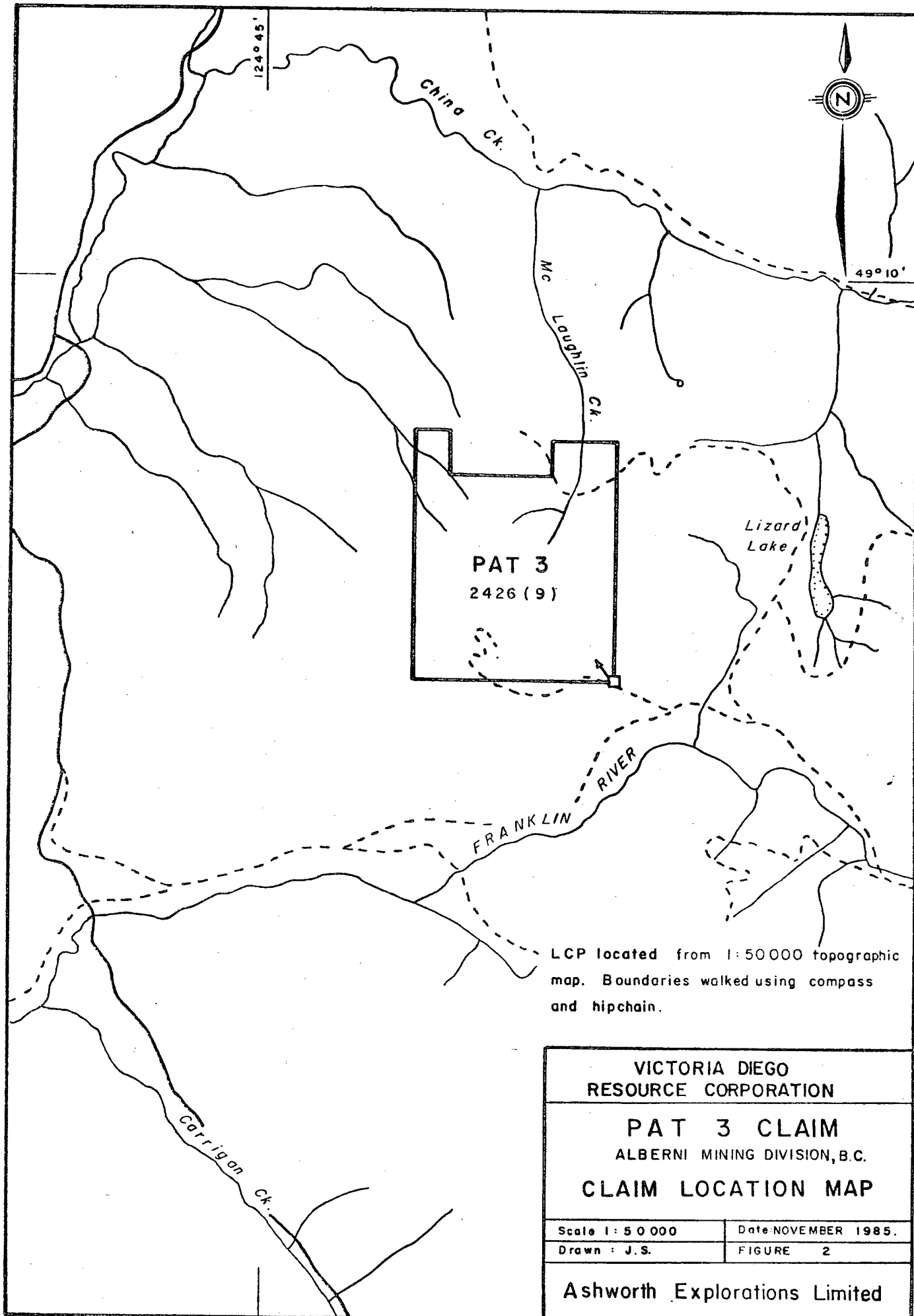
VICTORIA DIEGO
RESOURCE CORPORATION

PAT 3 CLAIM
ALBERNI MINING DIVISION, B.C.

GENERAL LOCATION MAP

Scale 1:7 500 000	Date: NOVEMBER 1985.
Drawn: J.S.	FIGURE I

Ashworth Explorations Limited



LCP located from 1:50 000 topographic map. Boundaries walked using compass and hipchain.

VICTORIA DIEGO
RESOURCE CORPORATION

PAT 3 CLAIM
ALBERNI MINING DIVISION, B.C.
CLAIM LOCATION MAP

Scale 1 : 50 000	Date NOVEMBER 1985.
Drawn : J.S.	FIGURE 2

Ashworth Explorations Limited

1. INTRODUCTION

This report summarizes geochemical and geological work done on the Pat 3 claim on September 26, 1985. Ashworth Explorations Limited was retained by William Poole (Owner) and Victoria Diego Resource Corporation (Operator) to perform assessment work and prepare a report.

2. LOCATION AND ACCESS

The Pat 3 property is located 120 kilometers west of Vancouver or 12 kilometers southeast of Port Alberni on Vancouver Island (see Figure 1). It is within NTS map sheet 92F/2 in the Alberni Mining Division.

Access is from Port Alberni along the Museum Creek haul road. This leads to a series of logging roads, operated and maintained by MacMillan-Bloedel Ltd. and provides excellent four wheel drive access to the Mount Patlicant area. Roads are present on the south, east and northern boundaries of the claim plus a trail entering the western portion.

3. PHYSIOGRAPHY

The property is situated within the western coastal forest region characterized by abundant rainfall and heavy growth of large timber including fir and pine. The claim is heavily logged to the south, east and north creating lush growths of fireweed and thicket.

Patlicant Mountain is located in the middle of the claim. Slopes vary from shallow to moderate. Highest elevation is 1236 metres at the top of Patlicant Mountain to a low of 600 metres giving a total relief of 636 metres. Drainage is into China Creek to the north and Franklin River to the south, both of which flow into Alberni Inlet.

4. HISTORY

Mineral prospecting in the area has been active since placer gold was mined on China and Franklin Creeks during the 1860's. Development of lode gold prospects soon followed with eight properties in production by the 1940's. Low gold prices combined with low tonnage of the vein deposits inhibited further development.

In the 1960's Gunnex Limited acquired prospecting rights on certain parts of the E & N Railway Land Grants. Work done included a helicopter aeromagnetic survey, a regional soil and silt sampling program, plus regional geological mapping combined with mineral showing examinations.

The area still remains active. A diamond drill program was carried out by Jan Resources on the Black Panther Mine - Summit Lake area in 1980-81. Westmin Mines Ltd. is currently undertaking a diamond drill program on the Thistle Mine property 3 km west of Mt. McQuillan, 6 km southeast of the property.

Other than work done by Gunnex Ltd. in the 1960's no known work has been done in the Patlicant Mountain area. A small copper showing was discovered on what is now the northern part of the Pat 3 claim.

The property is underlain by carboniferous sediments of the Cretaceous Nanaimo Group intruded by Tertiary Intrusions. These intrusions are associated with several prospects in the area, including Mt. Spencer and Mt. McQuillan.

The favourable geology combined with a small copper showing and increased mining activity in the area makes the Pat 3 claim a promising prospect.

5. PROPERTY STATUS

The Pat 3 claim was staked on September 12, 1984. It is comprised of 20 units (record no. 2426) and expires on September 27, 1985. It is owned by William Poole and operated by Victoria Diego Resource Corporation (see Figure 2).

6. GEOLOGY - PROSPECTING

The area concentrated on for prospecting was the northeast corner of the claim at the headwaters of McLaughlin Creek. A small copper showing allegedly occurs in the creek but this was not found (see Figure 3).

The main rock unit is a Granodiorite porphyry, Tertiary in age. Average composition is 20% quartz, 15% combined hornblende and biotite, 65% white feldspar. White feldspar also forms phenocrysts. In general this unit is massive, homogenous and fresh looking.

The porphyry unit intrudes a dark gray-black siltstone belonging to the Cretaceous Nanaimo group. Near the contact the siltstone contains rounded iron rich volcanic fragments. These fragments average 6-8 cm in diameter and have 1 cm wide bleached alteration halos.

7. GEOCHEMISTRY

7.1 Field Procedures

The purpose of the 1985 program was to soil and silt sample as much of the property as possible.

Altogether, 36 samples were taken consisting of 33 contour soil samples and 3 stream sediment samples. Soil samples were taken at a depth of 30 cm in the B-horizon using Kraft gusset envelopes.

7.2 Analytical Techniques

Bondar-Clegg & Company Ltd. was retained to perform the analysis. Soil and silt samples were dried and sieved to minus 80 mesh. Elements Cu, Pb, Zn and Ag were extracted using a hot HNO_3 -HCl solution and detected by atomic absorption. For gold analysis, fire assay was used followed by atomic absorption.

7.3 Results

For complete geochemical lab report see Appendix A. Anomalies were determined using the statistical technique: Mean + 2 Standard Deviations = Anomalous.

Copper

No. of samples = 36
 Mean = 52 ppm
 Standard deviation = 26
 $52 + 2(26) = \text{Anomalous} = 104 \text{ ppm}$

Lead

No. of samples = 36
 Mean = 5 ppm
 Standard deviation = 2
 $5 \times 2(2) = \text{Anomalous} = 9 \text{ ppm}$

Zinc

No. of samples = 36
Mean = 72 ppm
Standard deviation = 19
 $72 + 2(19) = \text{Anomalous} = 110$

Silver

No. of samples = 36
Mean = 0.2 ppm
Standard Deviation = .003
 $0.2 + 2(.003) = \text{Anomalous} = .206 \text{ ppm}$

Gold

No. of samples = 36
Mean = 9 ppb
Standard deviation = 5
 $9 + 2(5) = \text{Anomalous} = 19 \text{ ppb}$

Copper anomalies include two weak soil values, one to the north and one to the south. Lead results are also weak but are clustered at the headwaters of McLaughlin Creek. The four zinc anomalies are also low but coincident with the lead values. The one silver anomaly is extremely weak and isolated in the southern part of the claim. The four gold values include one moderate soil anomaly (55 ppb) and two low numbers to the north and one to the south.

7.4 Interpretation

From the results the one area of interest occurs at the headwaters of McLaughlin Creek. Three silt samples from the creek gave coincident anomalies in lead and zinc plus one gold value (25 ppm). A soil sample in the creek value gave a gold result of 55 ppb.

These anomalies could be coming from a northeast trending fault (mapped by Laanela, Gunnex Ltd., 1965) which lies directly above McLaughlin Creek toward the peak of Patlicant Mountain. This area warrants follow up mapping and sampling.

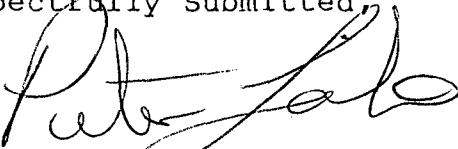
8. CONCLUSION

The Pat 3 claim is underlain by Cretaceous sediments and Tertiary intrusives. These intrusions are associated with several known prospects in the vicinity.

The 1985 program consisted of contour soil sampling and silt sampling, plus prospecting the northeast part of the claim. Results delineated one area at the headwaters of McLaughlin Creek worthy of further work.

It is recommended that a program consisting of geological mapping, reconnaissance soil, silt and rock sampling be undertaken. Coverage should include the remainder of the property not already sampled. Special attention should be paid to the anomalous area outlined by the 1985 program. Further work consisting of geophysics and trenching would be contingent upon favourable results from the 1986 program.

Respectfully Submitted,



Peter D. Leriche, B.Sc.
ASHWORTH EXPLORATIONS LIMITED

(Seal)

APPENDIX A
GEOCHEMICAL RESULTS

Bondar-Clegg & Company Ltd.
 130 Pemberton Ave.
 North Vancouver, B.C.
 Canada V7P 2R5
 Phone: (604) 985-0681
 Telex: 04-352667



BONDAR-CLEGG

REPORT: 125-3223

PROJECT: NONE GIVEN

SAMPLE NUMBER	ELEMENT UNITS	Cu PPM	Pb PPM	Zn PPM	Ag PPM	Au PPB
S1 PT85-59		27	6	60	0.2	<5
S1 PT85-60		121	5	95	0.3	<5
S1 PT85-61		47	4	80	0.2	10
S1 PT85-62		49	4	73	<0.2	5
S1 PT85-63		48	5	70	<0.2	10
S1 PT85-64		95	5	60	<0.2	<5
S1 PT85-65		6	4	45	<0.2	<5
S1 PT85-66		16	4	65	<0.2	<5
S1 PT85-67		13	5	43	<0.2	<5
S1 PT85-68		1	2	26	<0.2	<5
S1 PT85-69		34	5	60	<0.2	<5
S1 PT85-70		13	5	48	<0.2	<5
S1 PT85-71		10	2	40	0.2	25
S1 PT85-72		5	3	35	<0.2	<5
S1 PT85-73		2	<2	27	<0.2	<5
S1 PT85-17		76	3	61	0.2	<5
S1 PT85-18		67	18	118	0.2	5
S1 PT85-19		69	5	72	<0.2	<5
S1 PT85-20		36	5	58	<0.2	<5
S1 PT85-21		49	6	82	<0.2	<5
S1 PT85-22		76	4	70	<0.2	10
S1 PT85-23		70	5	71	<0.2	55
S1 PT85-24		47	3	65	<0.2	<5
S1 PT85-25		51	8	70	0.2	10
S1 PT85-26		69	6	90	0.2	<5
S1 PT85-27		86	4	95	0.2	<5
S1 PT85-28		52	4	70	<0.2	<5
S1 PT85-29		69	6	86	<0.2	10
S1 PT85-30		40	4	65	<0.2	10
S1 PT85-31		98	4	63	<0.2	20
S1 PT85-32		80	6	76	<0.2	10
S1 PT85-33		89	5	35	<0.2	5
S1 PT85-34		124	5	94	<0.2	10
PT85-101		60	10	128	<0.2	25
PT85-102		47	10	130	<0.2	<5
PT85-103		39	11	115	<0.2	<5

APPENDIX B

ITEMIZED COST STATEMENT

APPENDIX B

ITEMIZED COST STATEMENT

Wages

Geologist, Sept. 26/85 1.5 days @ \$250/day (incl. mob and demob)	\$ 375.00
Two Geological Technicians, Sept. 26/85 3 man days @ \$190/day (incl. mob and demob)	570.00
Supervision, 1/2 day @ \$450/day	225.00
Consultant, 1 day @ \$400/day	400.00

Food and Accomodation

Sept. 26/85, 3 man days @ \$85/day	255.00
------------------------------------	--------

Transportation

Truck Rental and Fuel, 3 days @ \$90/day	270.00
--	--------

Analysis

All samples analyzed for Cu, Pb, Zn, Ag, Au		
33 soil samples @ \$12.65/sample	\$417.45	
3 silt samples @ \$12.65/sample	<u>37.95</u>	455.40

Materials	75.00
-----------	-------

Report and Drafting	<u>200.00</u>
---------------------	---------------

TOTAL	<u><u>\$2,825.40</u></u>
-------	--------------------------

APPENDIX C

STATEMENT OF QUALIFICATION

APPENDIX C

STATEMENT OF QUALIFICATION

I, PETER D. LERICHE, of 6416 St. Andrews Way, Whistler, B.C., V0N 1B0 do hereby state that:

1. I am a graduate of McMaster University, Hamilton, Ontario with a B.Sc. degree in Geology, 1980.
2. I have actively pursued my career as a geologist for seven years in British Columbia, Ontario, Yukon and Northwest Territories.
3. I have no direct or indirect interest in the property or securities of Victoria Diego Resource Corporation.

Respectfully submitted:

P.D. Leriche, B.Sc.
ASHWORTH EXPLORATIONS LIMITED

Dated at Vancouver, B.C.
October 31, 1985

**GEOLOGICAL BRANCH
ASSESSMENT REPORT**

14,201
LEGEND



- 1 Cretaceous Nanaimo Group: shale, siltstone, sandstone.
- 2 Tertiary Intrusions: quartzdiorite-granodiorite porphyry.

Geology except for northeast corner by H. Laanela, Gunnex Ltd., 1965.

- · — · — Geological contact
- ~~~~~ Fault, observed, inferred
- Outcrop, from 1985 mapping
- |— Bedding
- L.S.P. Legal claim post
- └┘ Approximate claim boundary
- == Road
- 102 Silt sample site and number
- X 17 Soil sample site and number

0 100 200 300 400 500 600 700 800 900 1000 metres
Scale 1 : 10 000

Contour interval 40 metres.

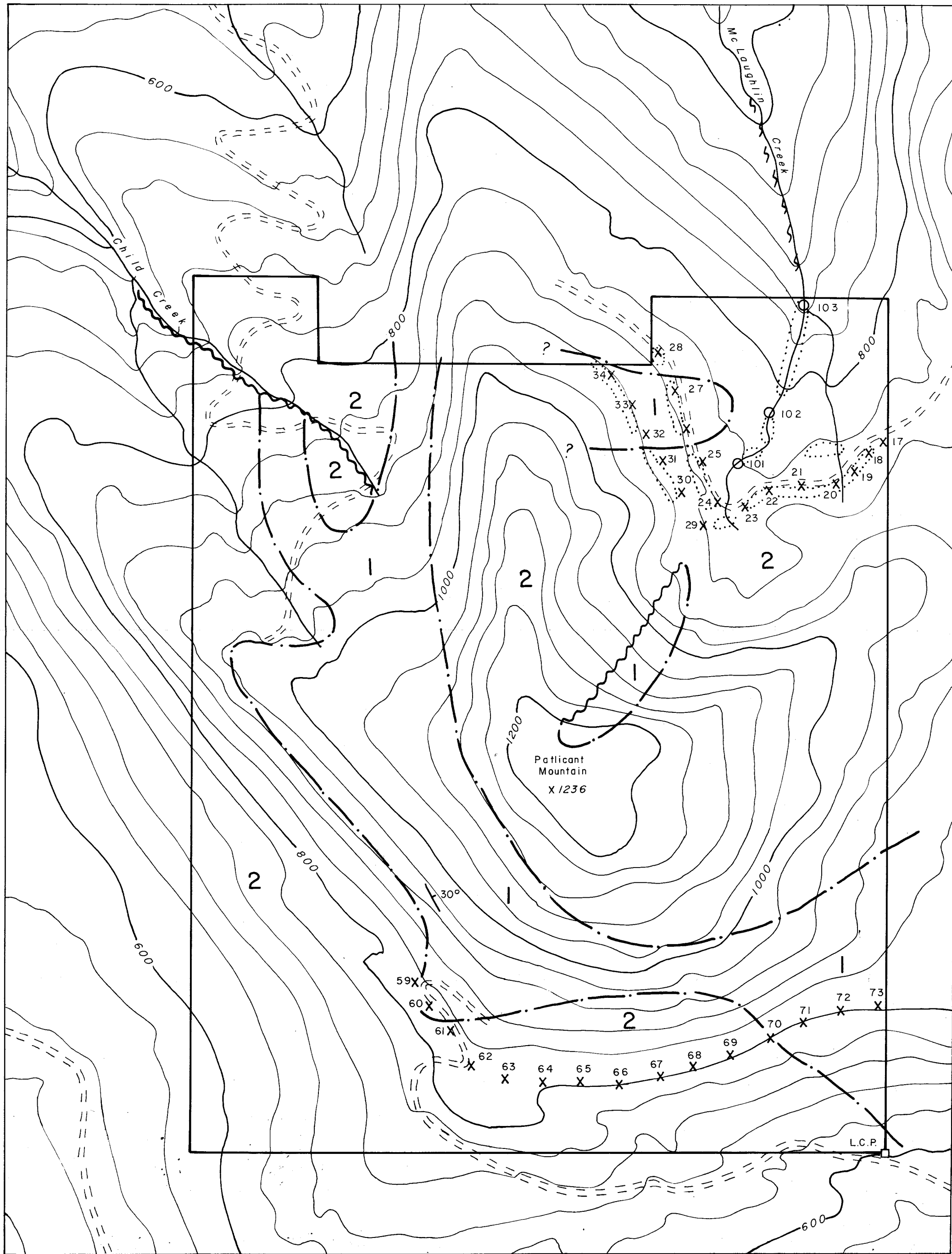
**VICTORIA DIEGO
RESOURCE CORPORATION**

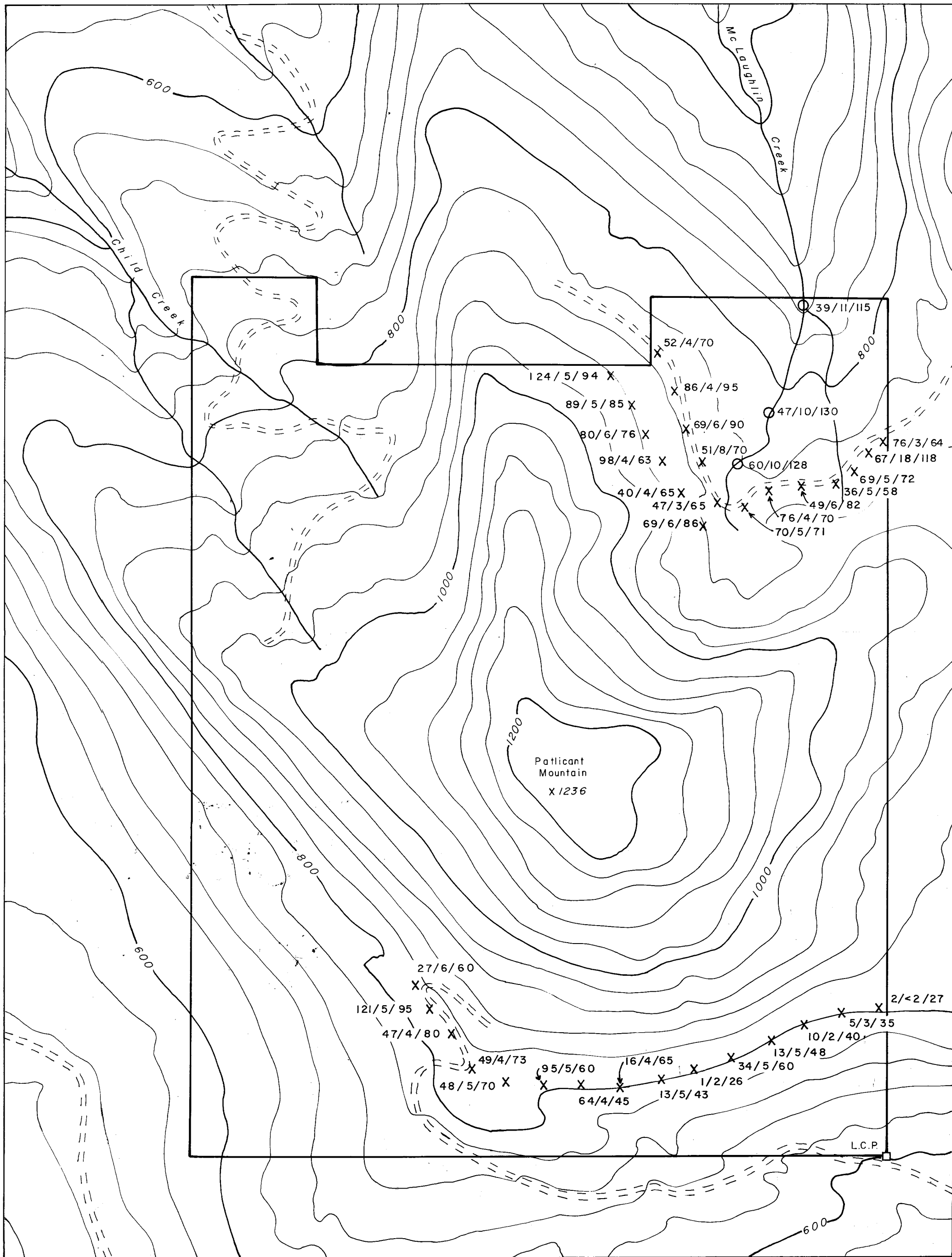
PAT 3 CLAIM
ALBERNI MINING DIVISION, B.C.

**SAMPLE LOCATION AND
GEOLOGY MAP**

Design by : P. L.	Date : NOVEMBER, 1985.
Drawn by : J. S.	Map : 3

Ashworth Explorations Limited



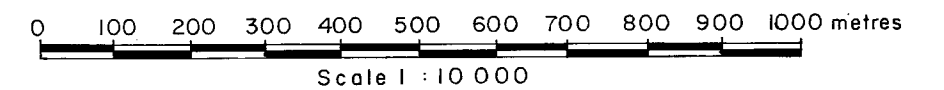


**GEOLOGICAL BRANCH
ASSESSMENT REPORT**

14,201

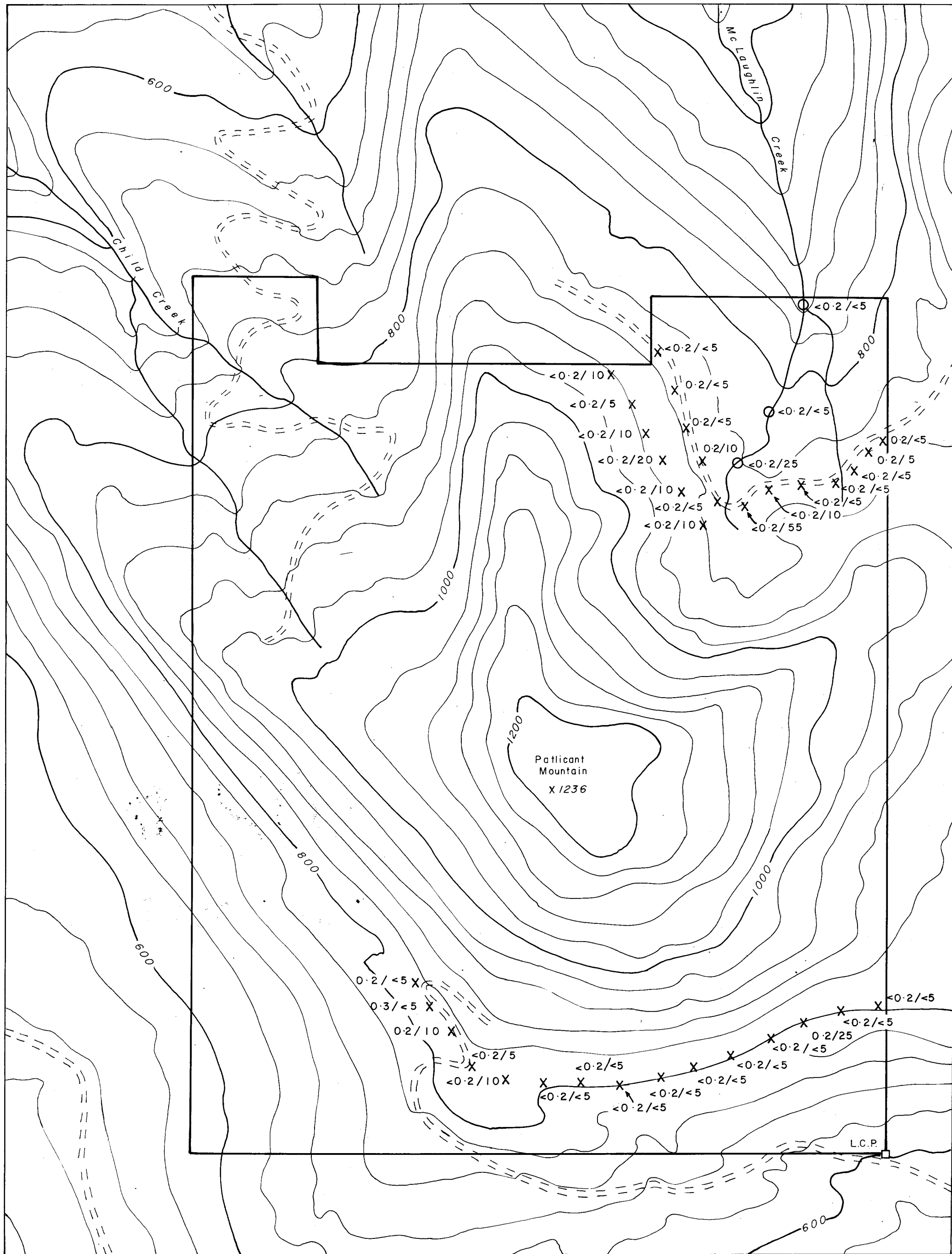
LEGEND

- L.S.P. Legal claim post
- └─┘ Approximate claim boundary
- ==== Road
- Silt sample site
- X Soil sample site
- 49/6/82 Cu ppm, Pb ppm, Zn ppm



Contour interval 40 metres.

VICTORIA DIEGO RESOURCE CORPORATION	
PAT 3 CLAIM ALBERNI MINING DIVISION, B.C.	
GEOCHEMICAL SURVEY COPPER, LEAD, ZINC RESULTS	
Design by : P. L.	Date : NOVEMBER, 1985.
Drawn by : J. S.	Map : 4
Ashworth Explorations Limited	

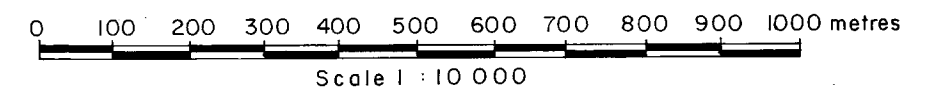


**GEOLOGICAL BRANCH
ASSESSMENT REPORT**

14,201

LEGEND

- L.S.P. Legal claim post
- └─┘ Approximate claim boundary
- ==== Road
- Silt sample site
- X Soil sample site
- 0.2 / 5 Ag ppm, Au ppb



Contour interval 40 metres.

**VICTORIA DIEGO
RESOURCE CORPORATION**

PAT 3 CLAIM
ALBERNI MINING DIVISION, B.C.
GEOCHEMICAL SURVEY
SILVER, GOLD RESULTS

Design by : P. L.	Date : NOVEMBER, 1985.
Drawn by : J. S.	Map : 5

Ashworth Explorations Limited