

## 1985 Assessment Report

## DIAMOND DRILLING

Title: PATHFINDER PROPERTY

Claims: Pathfinder, Diamond Hitch,  
Christina, Derby, Jasper Fr, Iron  
Bell Fr, London, Little Bertha,  
Lonestar Fr, Path 1-8, Lucky 1-4,  
Hike 1-2

Commodity: Silver, Gold, Copper

Location: Pathfinder Creek - Granby River Area  
20 km north of Grand Forks  
82E 1W; 49° 12'N, 118° 25'W  
Greenwood M.D.

Consultant and Author: L. Sookochoff, P.Eng.  
Sookochoff Consultants Ltd.  
311-409 Granville Street  
Vancouver, B.C., V6C 1T2

Owner: NU-LADY GOLD MINES LTD.

Operator: CONSOLIDATED BOUNDARY EXPLORATION  
LTD.

Work Dates: May 20, 1985 to Sept. 30, 1985

Submitted Date: Sept. 30, 1985

**GEOLOGICAL BRANCH**  
**ASSESSMENT REPORT**

**FILMED**

**14,208**

## TABLE OF CONTENTS

INTRODUCTION -----	1.
PROPERTY -----	2.
LOCATION AND ACCESS -----	2.
PHYSIOGRAPHY -----	3.
HISTORY -----	4.
GEOLOGY -----	5.
RESULT OF PREVIOUS WORK -----	8.
1984 DIAMOND DRILL PROGRAM -----	9.
1985 DIAMOND DRILL PROGRAM -----	9.
CONCLUSIONS -----	14.
RECOMMENDATIONS -----	14.
BIBLIOGRAPHY -----	15.
CERTIFICATE -----	16.
STATEMENT OF COSTS -----	17.

### ILLUSTRATIONS

### SCALE

FIGURE 1	PROPERTY LOCATION MAP	1:6,336,000
FIGURE 1A	CLAIM MAP	1: 50,000
FIGURE 2	INDEX & CLAIM MAP	1: 10,000
FIGURE 3	SECTION 71+20E	1: 300
FIGURE 4	SECTION 71+45E	1: 300
FIGURE 5	DRILL HOLE LOCATIONS	1: 300

### ADDENDUM

Diamond Drill Logs: 85-1 to 85-13



1984 Diamond Drilling Assessment Report  
on the  
Pathfinder Property  
for  
NU-LADY GOLD MINES LTD.  
and  
CONSOLIDATED BOUNDARY EXPLORATION LTD.

-----

INTRODUCTION

During the 1985 exploration season a diamond drill program was carried out on the Pathfinder property owned by NU-LADY GOLD MINES LTD. and under option to CONSOLIDATED BOUNDARY EXPLORATION LTD. which is also the operator.

The purpose of the drill program was to test for gold bearing values within the known massive sulfide zones on the Pathfinder claim.

Information for this report was obtained from the supervision of the 1985 and previous exploration projects on the Pathfinder property.



PROPERTY

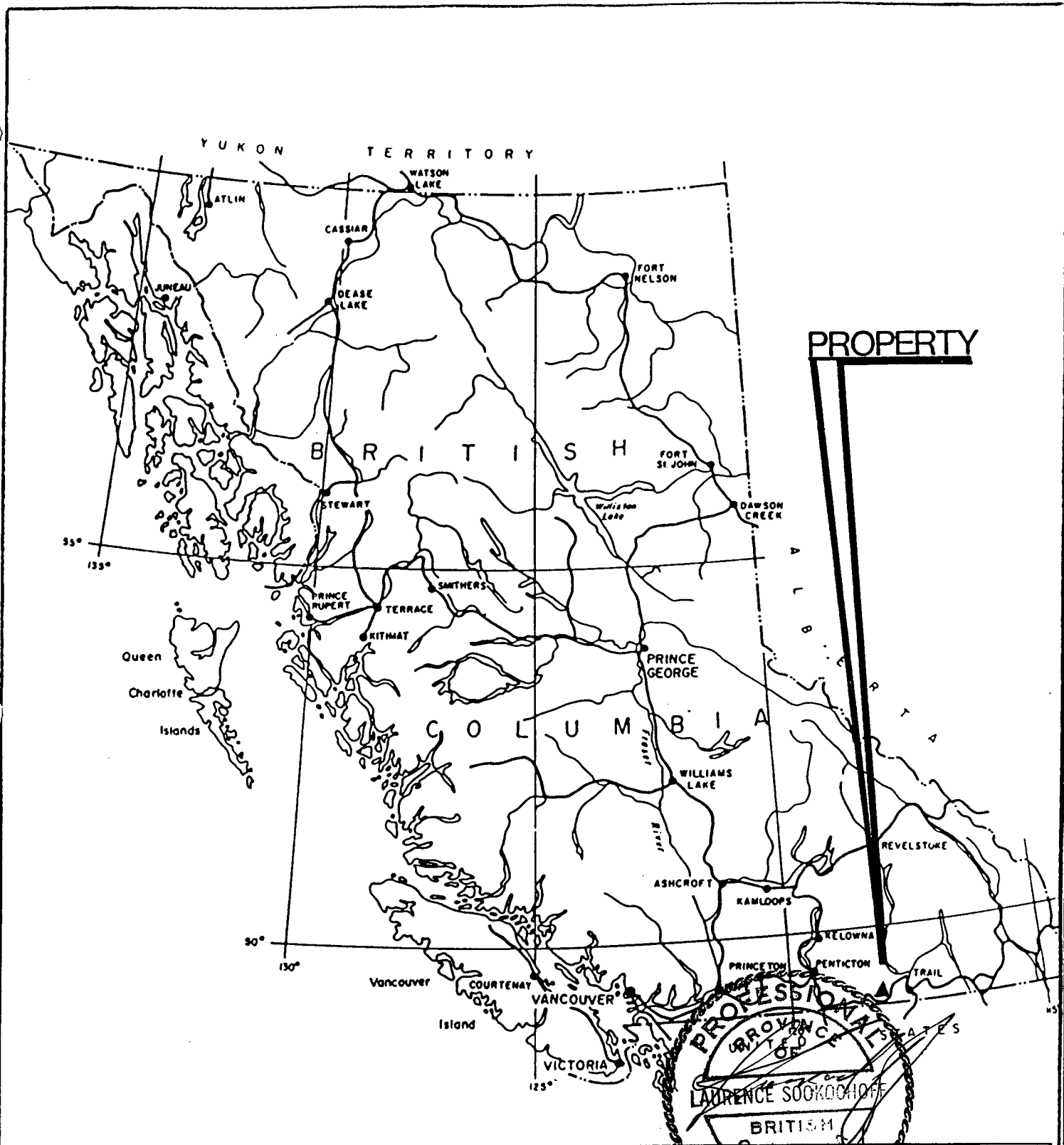
The property consists of nine reverted crown granted mineral claims and fourteen located two-post claims - all contiguous. Particulars are as follows:

<u>Claim</u>	<u>Lot No.</u>	<u>Record No.</u>	<u>Expiry Date</u>
<u>Reverted Crown Grants</u>			
Diamond Hitch	1684	1422	February 28, 1989
Christina	1356	1419	February 23, 1989
Derby	2233	1420	February 23, 1989
Jasper Fr.	3029S	1417	February 23, 1989
Iron Bell Fr.	938	1413	February 21, 1989
London(Bonnock)	2234	1412	February 21, 1989
Little Bertha	959	1411	February 21, 1989
Lonestar Fr.	1446S	1418	February 23, 1989
Pathfinder	782	222	February 17, 1990
<u>Two-Post Claims</u>			
Path 1-8		2046-2053	March 4, 1989
Lucky 1-4		2954-2057	March 4, 1989
Hike 1&2		3605-3606	March 14, 1989

LOCATION AND ACCESS

The property is located 20 km. north of Grand Forks adjacent and to the east of the north fork of the Granby River. Access is provided by the Granby River Highway which parallels the Granby River on the east and passes through the property. Numerous secondary roads provide access to all known showings on the property.





**PROPERTY**



SOOKCHOHOFF CONSULTANTS INC.			
CONSOLIDATED BOUNDARY EXPLORATION LTD.			
NU LADY GOLD MINES LTD.			
PROPERTY LOCATION MAP			
PATHFINDER PROPERTY			
0 100 200 300 MILES		0 100 200 300 KILOMETRES	
N T S 82E/1W		Greenwood M D	
DRAWN	PROJECT	DATE	FIG.
		Sept. '85	1

WATER AND POWER

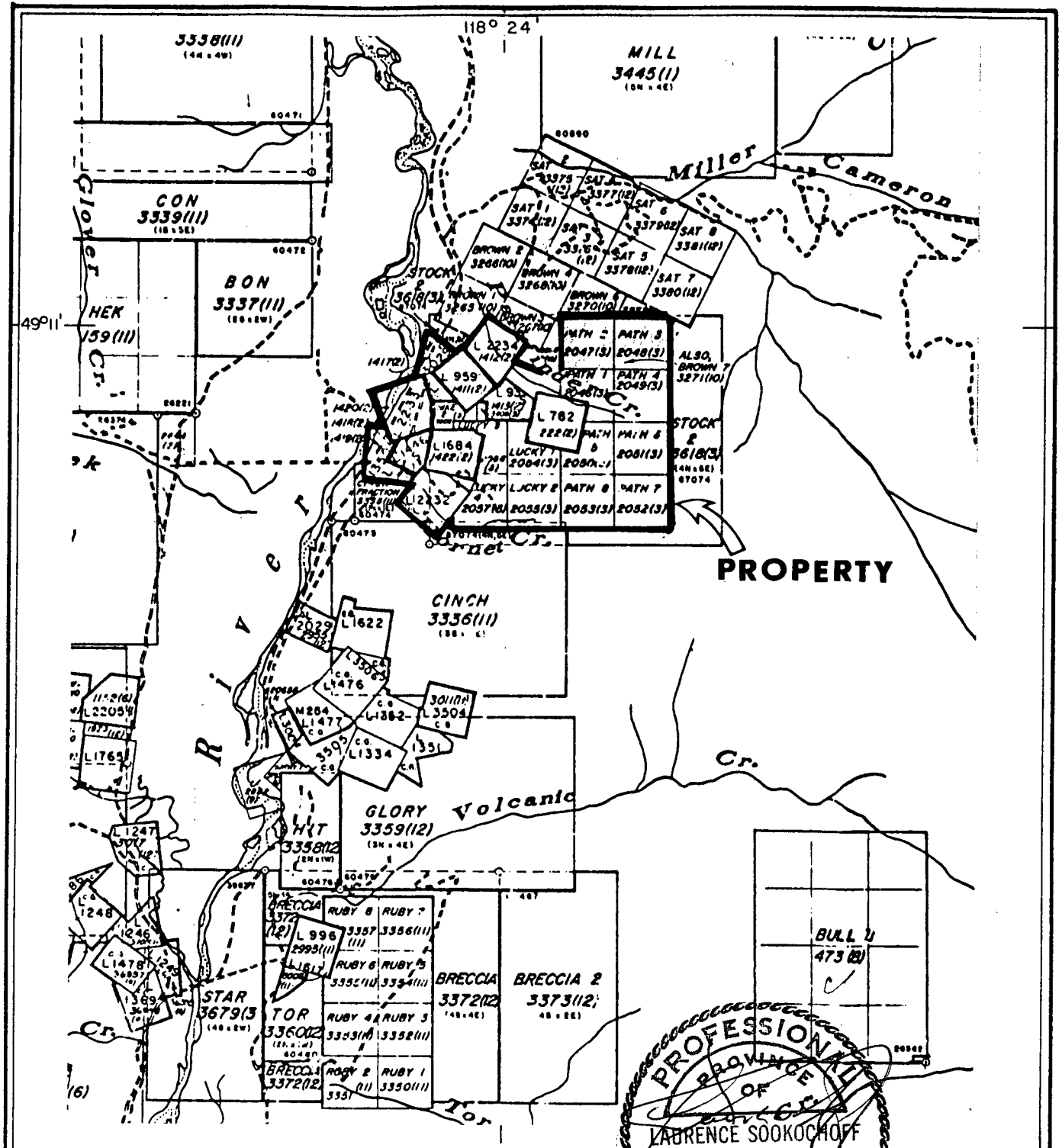
Sufficient water for all phases of exploration and development could be available from Pathfinder Creek in the north or Hornet Creek in the south of the property. Secondary water courses extending from the main creeks could also provide water.

PHYSIOGRAPHY

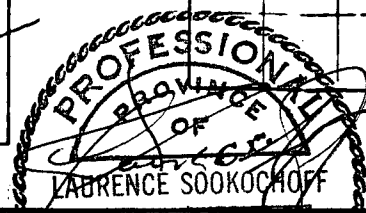
The property is within the Christina Range of the Monashee Mountains, a subdivision of the Columbia Mountain System. The topography of the general property area is fairly mature, and most peaks are rounded by glacial action. The relief of the area is moderate - a maximum of 1550 meters.

The Pathfinder Group covers the forested eastern slopes of the Granby River valley and extending onto portions of the plateau to the east. Elevations range from 550 meters at the southwest to 1140 meters at the east.





**PROPERTY**



SOOKCHOFF CONSULTANTS INC.  
**PATHFINDER PROPERTY**  
 Consolidated Boundary Exploration Ltd.  
 Nu-Lady Gold Mines Ltd.

**CLAIM MAP**

SCALE: 1:50,000	DATE: Sept. 85	N.T.S	DRAWN BY: GEO-COMP	FIGURE:
--------------------	-------------------	-------	-----------------------	---------

## HISTORY

The history of the property stems from work completed from 1895 to 1920 when shipments were made from the Pathfinder and Little Bertha claims. During this period 264 tons of material assaying 0.09 oz Au/ton, 0.50 oz Ag/ton and 0.97% Cu were shipped from the Pathfinder and 996 tons assaying 0.43 oz/ton and 3.9 oz/ton from the Little Bertha. Other exploration work indicated by pits, trenches and adits occur in other areas of the property.

In the 1960's Alwin Mining Co. carried out an exploration program on the Pathfinder Group. The work consisted of obtaining access to old workings, bulldozer trenching and diamond drilling. Twelve drill holes were reportedly completed on the Little Bertha Claim. However the results are not available

In 1980 Aries Resources Inc. optioned the property and carried out an exploration program consisting of the establishment of a grid over half the property, geological mapping, a magnetometer survey, and the drilling of three core holes on the Little Bertha claim.

In 1983, Nu-Lady Gold Mines optioned the property and carried out a preliminary sampling program in addition to a diamond drilling program on the Diamond Hitch Claim.

In January 1984, a four hole 195 meter (640 feet) diamond drill program was completed on the Diamond Hitch claim by Nu-Lady Gold Mines.





## GEOLOGY

The property geology is described by Saunders et al in a December 15, 1980 report on the Pathfinder Group. Their geology is presented in the accompanying map and is described as follows:

"Three map units have been distinguished on the Pathfinder property. From oldest to youngest they are:

Unit 1 - Sedimentary and volcanic rocks of the Anarchist Group.

Unit 2 - Quartz diorite intrusive complex, Nelson Intrusions.

Unit 3 - Feldspar porphyritic monzonite, Coryell Intrusions.

Map Unit 2 contains many fine grained dacites and andesites which grade into diorite. It is believed from the field relationships that most of these are fine grained members of the Unit 2 intrusive complex. However it is impossible to distinguish these rocks from true lavas and tuffs and as a result rocks which property belong to Unit 1 may have been included in Unit 2.

### Unit 1

The cherts of this unit are strongly weathered in outcrop due to a consistent content of 2 to 5% pyrite. They are very well bedded, but it is impossible to make any other textural observations without fresh rock exposures. The beds strike uniformly at 100° to 110° and dip steeply to the north. They are associated with andesites which are also pyritic.

The dacites and andesites on the property commonly display white feldspar phenocrysts 1 to 2 mm in size as well as occasional hornblende. Although the groundmass is often very fine frequent heavy chlorite and epidote alteration is evident.

### Unit 2

The quartz diorite complex underlies 80% of the property as a large number of small intrusive bodies. The individual rock types represented include quartz diorite, granodiorite, alaskite, diorite, dacite, andesite and rhyodacite. The rocks vary greatly in appearance, they range from fine to medium grain size and from unaltered to very altered.

On the Little Bertha claim an individual body of granodiorite may be traced over an area of 200 m by 300 m, but this is rare. In general the rock type varies from outcrop to outcrop, contacts presumably being gradational, with the finer grained rocks usually showing a much heavier chlorite-epidote alteration. Evidence for a sill-like shape to many of these small bodies comes from the fact that the boundaries of the chert of Unit 1 are subparallel to its bedding. It may also be assumed from the extreme variation in the degree of alteration of rocks in the unit that later bodies brought about contact alteration of earlier intrusions.



Brownish-white pyritic quartzite found in the Little Bertha No. 3 Adit and at various other localities on the Pathfinder and Little Bertha claims is assumed by evidence of its gradational contacts to be the product of intense silicification of dacitic and dioritic rocks of this unit.

### Unit 3

This unit primarily consists of medium grained monzonite. It contains both white and pink feldspars, one of which is usually porphyritic, 0-3% quartz, a small amount of hornblende, and some magnetite. Rocks containing only pink feldspar were mapped as syenite; fine grained pink equivalents as trachyte.

Rocks of this unit are uniform in appearance and unaltered. They may be distinguished from Unit 2 by the presence of two feldspars, little or no quartz and a much lower mafic content. The contacts of Unit 3 with Unit 2 are sharp and lobate in shape.

Unit 3 would appear to represent a different differentiation series, lower in quartz and higher in alkali metals, than Unit 2.

RESULTS OF PREVIOUS WORK

1980 Exploration Program

The magnetometer survey indicated no correlation between the magnetometer anomalies and the geology of the property.

The geological survey established that except for a few isolated small pits, all of the old workings and mineral showings occur in three areas: Little Bertha, Pathfinder, and Diamond Hitch.

On the diamond drilling of three holes on the Little Bertha it was concluded that the vein was of good grade but of limited extent as a result of not finding any vein material in the drilling.

Sampling of the Pathfinder showings returned assays of .030 to .07 oz Au/ton with silver and copper values across up to two meters.

1983 Diamond Drill Program

The results of the July and August drill program on the Diamond Hitch showing returned encouraging results. The significant intersections include .120 oz Au/ton over 12.2 feet and 1.4 oz Au/ton over 2.4 feet - both intersections in hole 83-04

As a result of the 1983 intersections a follow-up drill program was initiated.



1984 DIAMOND DRILL PROGRAM

Four holes (84-1 to 84-4) for a total of 640 feet (1970 meters) were completed on the Diamond Hitch Claim. The results of the drilling did not provide any encouragement to the significant intersections of the 1983 program. The best intersection was a 3 foot (.9m) section of .028 oz Au/ton.

Additional information is provided in the writer's March 26, 1984 report on the Pathfinder property.

1985 DIAMOND DRILL PROGRAM

Thirteen BQ diamond drill holes for a total of 921 meters or 3024 feet were completed. The drilling was on the Pathfinder claim and centered on the shaft and adit area which explore a massive sulfide zone (Figure 5). The purpose of the drilling was to determine the continuity of the known sulfide zones on the Adit and Shaft zones. Particulars of the drill holes are as follows:

<u>Drill Hole Number</u>	<u>Location</u>		<u>Bearing</u>	<u>Dip</u>	<u>Depth</u>	
	<u>E</u>	<u>N</u>			<u>ft.</u>	<u>meters</u>
85-1	71+11	95+40	084°	-50°	457	140
85-2	71+11	94+58	045°	-52°	145	44
85-3	71+23	94+69	272°	-45°	55	17
85-4	71+25	94+69	272°	-60°	44	14
85-5	71+39	94+85	270°	-50°	367	112
85-6	71+45	95+40	155°	-40°	157	48
85-7	71+45	95+40	155°	-60°	217	67
85-8	71+45	95+40	180°	-45°	167	51
85-9	71+45	95+40	180°	-60°	207	63
85-10	71+45	95+40	140°	-46°	187	57
85-11	71+45	95+40	140°	-60°	217	66
85-12	71+45	95+40	140°	-70°	197	60
85-13	71+50	95+52	165°	-60°	597	182
					3024	921



The drilling was carried out by Consolidated Boundary Exploration Ltd. The core was logged by L. Sookochoff, P.Eng. with pertinent sections marked for splitting.

Sections of massive sulfides or heavily disseminated sulfides were split in half with half sent for assay and half retained in the core box for future reference.

The core was split by D. Harsine of Grand Forks, B.C.. The split sections which were limited to a maximum of five foot (1.5 meter) intervals, were placed in a plastic sample bag with a duplicate numbered tag for reference and sent for assay.

Local sections of unsplit core were also sent for assay to check for gold values in lightly mineralized (pyrite) or altered zones. These core pieces were referenced as to hole number and footage. ie 81-5-52

All samples were assayed for gold with massive sulfide sections also assayed for silver and copper. The local pieces of core were assayed as rock geochem for mainly gold and occasionally for silver and copper.

The assaying was performed by Acme Analytical Laboratories of Vancouver by the following procedure:

The drill core samples were crushed and pulverized to -100 mesh. A .50 gm sample is digested with 3 ml of 3:1:3 HCL:HNO<sub>3</sub>:H<sub>2</sub>O at 90 deg. C. for 1 hour. The sample is diluted to 10 mls with water. Elements analysed by AA:Cu, Ag, Au\*..

Au\* - 10 gm, ignited, hot aquaregia leached, MIBK extraction, AA analysis.

## RESULTS

### Shaft Zone

Diamond drill holes 85-1 to 85-5 were centered around the shaft zone to determine the attitude of the massive sulfide zone on which a shaft was sunk. The massive sulfide zone was intersected in drill holes 85-1, 85-3 and 85-5. Drill hole 85-2 was under and semi parallel to the zone. Drill hole 85-4 hit a stope which extends southward from the shaft.

### Adit Zone

Diamond drill holes 85-6 to 85-13 delineated a massive sulfide zone up to 12.5 feet (3.5m) wide and assaying up to .152 oz Au/ton over five feet (1.5m) (D.H.85-6). The zone is associated with a feldspar porphyry in the western series of holes and with an intrusive and a feldspar porphyry in the east (84-10, 84-11, 84-12).

The most significant assay was from a sulfide section at an intrusive-feldspar porphyry contact in DH 85-12 where a 4.6 foot (1.4m) section assayed .216 oz Au/ton. This was also the eastern most intersection of the zone.

The sulfide zone strikes at 050° and dips 40° to the west.

Significant Intersections

<u>Hole#</u>	<u>From</u>	<u>To</u>	<u>Description</u>	<u>Cu</u>	<u>Ag</u>	<u>Au</u>
85-1	13.9	18.9	Massive sulfide	1.18	.57	.133
	18.9	23.9		.89	.49	.018
	23.9	29.0		.56	.31	.005
	29.0	31.0		.61	.40	.566
85-2	15	17	Skarn	.05	.02	.016
85-3	15	19	Massive sulfide	.58	.42	.138
	19	23	Skarn	.44	.25	.018
	23	26	5% py patches	.34	.25	.022
85-4	-	-		-	-	-
85-5	18	20	Massive sulfide	.26	.20	.144
	20	22	Massive sulfide	.28	.14	.036
85-6	142	147	Massive sulfide	.74	.41	.152
85-7	-	-		-	-	-
85-8	132	135	Qtz and 20% sulfides	.99	.58	.04
85-9	132	134	Stingers sulfides	.46	.26	.06
	134	139	Strgrs sulfd. in f.p.	.07	.05	.026
	139	139.9	60% sulfides	.27	.13	.028
85-10	145.4	148.1	Massive sulfides	2.52	1.55	.138
	160.6	163.2	Massive sulfides	.20	.07	.036
85-11	140.5	143.5	Massive sulfides	.37	.23	.014
85-12	137.1	141.7	Massive sulfides	.67	.38	.216
85-13	-	-		-	-	-





Information derived as a result of the thirteen drill holes is as follows:

- 1) Gold mineralization of up to .566 oz/ton is mainly associated with massive sulfides.
- 2) The massive sulfide zone is comprised of up to 100% sulfides consisting of predominantly pyrrhotite with up to 10% chalcopyrite and variable pyrite.
- 3) Up to 50% quartz is contained in short sections within the zone.
- 4) Anomalous gold values are also associated with most of the units intersected with greater values appearing to correlate with skarned sections. The skarn is obvious in the variable degree of garnet (pinkish patches), silicification, fine disseminated pyrite and lesser chlorite and epidote.
- 5) The skarn appears to be associated with lahar flows and/or intrusives.
- 6) The massive sulfide zone strikes at 050° with an apparent shallow dip to the west.
- 7) The zone is open along strike and down dip.

CONCLUSIONS

Significant gold values are contained within two parallel massive sulfide zones approximately 50 meters apart which strike at and dip shallowly 45° west.

The upper shaft zone returned average values of up to .075 oz Au/ton over 16.1 feet with an inclusive 5.0 foot (1.5m) section of .113 oz Au/ton and 1.18% Cu and a 2.0 foot (.6m) section of .566 oz Au/ton and .61% Cu.

The lower adit zone appears to be more significant in that an intersection of .216 oz Au/ton over 4.6 feet (1.4m) was obtained.

The zone appears to be continuous however varies substantially in tenor and width.

RECOMMENDATIONS

It is recommended that additional diamond drilling be carried out to test the two massive sulfides zones for width and tenor along strike and up dip. Two other massive sulfide zones occur to the east of the shaft and adit zones and higher in elevation.

Initially one drill hole should be spotted above the upper most zone - approximately 500 feet east of the adit zone - and drilled vertically to test four zones.

PROFESSIONAL  
BRITISH COLUMBIA  
ENGINEER  
Respectfully submitted  
Laurence Soobackhoff, P.Eng.

September 30, 1985  
Vancouver, B.C.



BIBLIOGRAPHY

BLACK J.M. - Geological Report on the 1983 Exploration Program of the Pathfinder Group, February 4, 1983.

- Report on Pathfinder Property, Grand Forks, B.C. for Nu-Lady Gold Mines Ltd., November 1, 1983.

ELEVATORORSKI, E.A. - Gold Mines of the World, Mindras, Dana Point, California 1981.

SAUNDERS, C.R. et al - Geological, Geophysical and Drilling Report on the Pathfinder Claim Group 15, December 1980

SOOKOCHOFF, L. - Geological Report on the Pathfinder Group for Aries Resources Ltd. February 22, 1980.

Diamond Drill Assessment Report on the Pathfinder Property for Nu-Lady Gold Mines, March 26, 1984.

Geology of Canadian Gold Deposits - Special Volume 24, CIM 1982

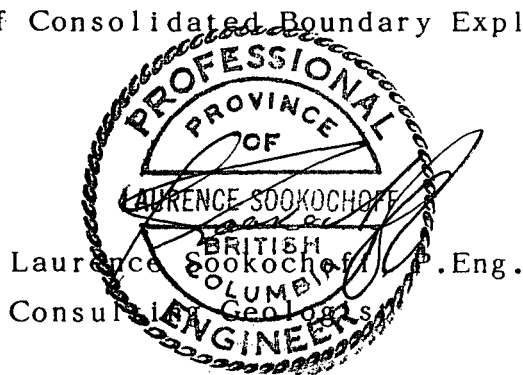
CERTIFICATE AND CONSENT

I, Laurence Sookochoff, of the City of Vancouver, in the Province of British Columbia, do hereby certify:

That I am a Consulting Geologist with offices at 311-409 Granville Street, Vancouver, B.C., V6C 1T2.

I further certify that:

1. I am a graduate of the University of British Columbia (1966) and hold a B.Sc. degree in Geology.
2. I have been practising my profession for the past nineteen years.
3. I am registered with the Association of Professional Engineers of British Columbia.
4. The information for this report was obtained from sources as cited under bibliography and from work done by the writer on the Pathfinder Property since 1980.
5. I have no direct, indirect or contingent interest in the property described herein or in the securities of NU-LADY GOLD MINES LTD. nor do I expect to receive any.
6. I am a director of Consolidated Boundary Exploration Ltd.



September 30, 1984  
Vancouver, B.C.



STATEMENT OF COSTS

The 1985 diamond drilling program (85-1 to 85-13) on the Pathfinder Property, Greenwood M.D. was carried out from May 20, 1985 to September 30, 1985 to the value as follows:

Diamond Drilling

B Q core size

3024 feet (921m) @\$20 \$60,480

Engineering

L. Sookochoff, P.Eng. \$ 3,200

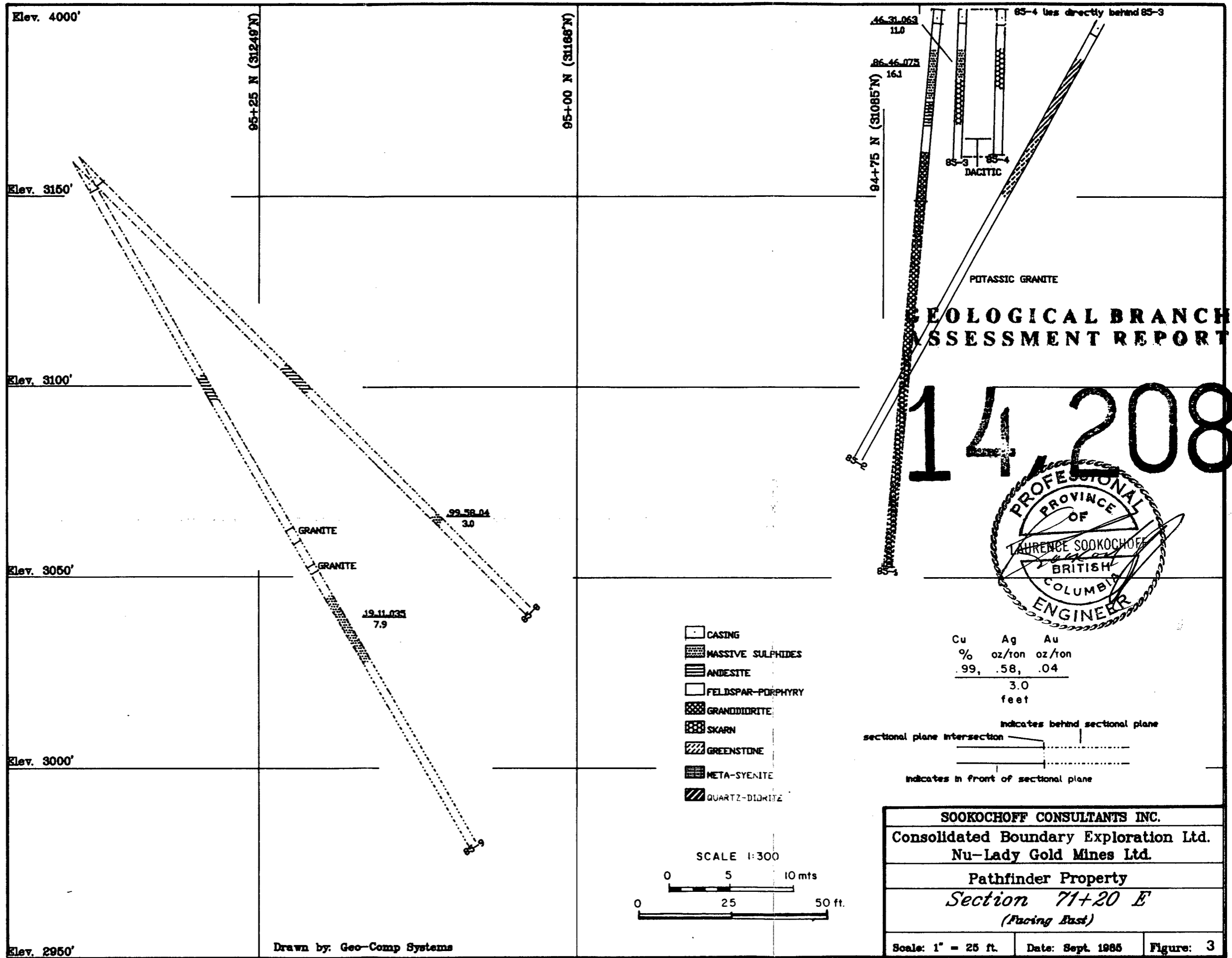
Report plus associated costs:

1,050

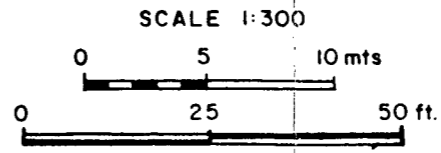
\$64,730

=====





Drawn by: Geo-Comp Systems



- CASING
- MASSIVE SULPHIDES
- ANDESITE
- FELDSPAR-PORPHYRY
- GRANODIORITE
- SKARN
- GREENSTONE
- META-SYENITE
- QUARTZ-DIORITE

Elev. 4000'

Elev. 3150'

Elev. 3100'

Elev. 3050'

Elev. 3000'

Elev. 2950'

95+25 N (31249'N)

95+00 N (31168'N)

46-31-063  
11.8

85-4 lies directly behind 85-3

85-46-075  
16.1

94+75 N (31085'N)

DACITIC

POTASSIC GRANITE

99-58-04  
3.0

19-11-035  
7.9

GRANITE

GRANITE

ADDENDUM



CLAIM NO. PATHFINDER**DIAMOND DRILL RECORD**PROPERTY PATHFINDERHOLE NO. 85-1

1/3

LATITUDE 71 + 11 EELEVATION 945 metersBEARING 084<sup>0</sup>DEPTH 457ft (139m) STARTED May 23, 1985 COMPLETED May 27, 1985DEPARTURE 95 + 40 N

SECTION

DIP -50<sup>0</sup>DRILLED BY CONSOLIDATED BOUNDARYLOGGED BY L. SOOKOCHOFF P.ENG

DEPTH FEET	FORMATION	SAMPLE NO.	FROM	TO	WIDTH	ASSAYS			
						Cu	Ag	Au	ppb Au
0-13.9	CASING								
13.9-31	MASSIVE SULFIDE ZONE: 80-100% m.s. po. w/ up to 10% cpy. intimately related amoebic and patches @ 25 <sup>0</sup> (?) Qtz up to 50% in short sections. Good fr @ 25 <sup>0</sup> , 45 <sup>0</sup> + 15 <sup>0</sup> w/ qtz	3079	13.9	18.9	5.0	1.18	.57	.113	
		3080	18.9	23.9	5.0	.89	.49	.018	
		3081	23.9	29	4.1	.56	.31	.005	
31-40	ANDESITE: Meta-pseudo brec'd, loc. skarny + pinkish frags 10% py as irregular blebs 37-39 heavy blebs + patchy py in black chloritic alt/d matrix 39.5-45 Granitic - washy metic texture	3082	29	31	2.0	.61	.40	.566	
		85-1	32						520
		85-1	38						690
40-49	FELDSPAR PORPHYRY: Lt. gray green f.g. matrix w/ fels. phenos. Cont. @ 60 <sup>0</sup>	85-1	40						615
		85-1	44						22
49-118	GRANODIORITE: Peppery texture alternating w/ andesite @ 50 <sup>0</sup> - 45 <sup>0</sup> to 66' greater gran. to 54, greater and to 66 73-75 Skarn-pinkish	85-1	69						110

WESTERN MINER-PRESS LTD.  
STANDARD FORM NO. 502



CLAIM NO. ....

**DIAMOND DRILL RECORD**

PROPERTY .....

HOLE NO. 85-1

LATITUDE .....

ELEVATION .....

BEARING .....

DEPTH .....

STARTED .....

COMPLETED .....

DEPARTURE .....

SECTION .....

DIP .....

DRILLED BY .....

LOGGED BY .....

DEPTH FEET	FORMATION	SAMPLE NO.	FROM	TO	WIDTH	ASSAYS			Au ppb
118-275	SKARN: Dense aphanitic pinkish	85-1	86						39
	patches, lt. ep. f. diss py (lava flows?)	85-1	92						66
	130-131 brecc'd w/ black chl. + mod	85-1	120						110
	f. diss py	85-1	131						67
	145-147 granodite @ 50 <sup>0</sup>								
	154 skarn dense f. diss py.	85-1	154						505
	sil'd	85-1	169						54
	174 Contact w/ gr. d. @ 60 <sup>0</sup>	85-1	179						21
	179 Sil'd skarny w/ diss py	85-1	196						88
	192 greater andesite w/ lt-mod fo + py	85-1	217						14
	196 greater mafic greater chl + ep. diss py	85-1	231						26
	not sil'd	85-1	240						31
	217 Skarny mod diss py sil.	85-1	257						19
	lahor; mod carb	85-1	263						4
	230 Loc. sec w/ greater maf + mod carb str	85-1	282						2
	231 Carb str; py mod greater carb	85-1	287						16
	from 230 @ 15 <sup>0</sup> pred	85-1	311						3
	240 greater maf carb + py.	85-1	348						2
	262 - mod py greater sil. mod carb	85-1	372						2

# DIAMOND DRILL RECORD

CLAIM NO. ....

PROPERTY .....

HOLE NO. 85-1 .....

LATITUDE ..... ELEVATION ..... BEARING ..... DEPTH ..... STARTED ..... COMPLETED .....

DEPARTURE ..... SECTION ..... DIP ..... DRILLED BY ..... LOGGED BY .....

DEPTH FEET	FORMATION	SAMPLE NO.	FROM	TO	WIDTH	ASSAYS		
								Au ppb
275-283	ANDESITE TUFF: Black shards up 1/4" in blackish gray f.graph matrix mod cal @45 <sup>0</sup>							
283-302	PULASKITE: Lt. reddish gray w/ shards and fels phenos. anhedral - mod diss py.							
304-308	FELDSPAR PORPHYRY: w/ reddish frags concave + convex less than 3/8" occ							
308-340	ANDESITE TUFF: Chloritic w/ shards + fels; lt. coarse py.							
340-369	DACITE: Aphanitic, grayish w/ pink fels phenos. in lt chl. matrix. +taffaceous frags - no py.							
369-386	ANDESITE TUFF: Same as 308-340. highly chl. fels phenos - black shards rare cal str.	85-1	399					12
386-426	SKARN: Sil'd w/ frags up to 1" rounded (lahor) locally pinkish chl - ep. : 390-391 grandodiaite 399 + 410 lt py	85-1	410					25
		85-1	457					2

ESTERN MINER-PRESS LTD.  
 STANDARD FORM NO. 902

CLAIM NO. PATHFINDER**DIAMOND DRILL RECORD**PROPERTY PATHFINDERHOLE NO. 85-2 1/2LATITUDE 71 + 11 EELEVATION 944 metersBEARING 045<sup>0</sup>DEPTH 145 ft (44m)STARTED May 27, 1985 COMPLETED May 28, 1985DEPARTURE 94 + 58 N

SECTION

DIP -52<sup>0</sup>DRILLED BY CONSOLIDATED BOUNDARYLOGGED BY L. SOOKOCHOFF P.Eng

DEPTH FEET	FORMATION	SAMPLE NO.	FROM	TO	WIDTH	ASSAYS			
						Cu	Ag	Au	Au ppb
0-12	CASING				ft				
12-58	GREENSTONE. - Aphanitic, green, w/ rare silica bands. Variably sil'd to 100% with sections skarn pinkish (garnet) and rare epidote and occ. to mod pyrite	3084	15	17	2.0	.05	.02	.016	
	15-17 Skarn w/ mod py. + qtz atn @ 80 <sup>0</sup> to c/a								
	17.5-18 Alaskite <del>cont</del> @ 30 <sup>0</sup> 23-23.5 Granite	85-2-30							1
	24-27 Alaskite								
	30.5-52 Dacitic - gray, seriate tex to porph. - lim on fr @ 90 <sup>0</sup> 45 <sup>0</sup> sub. hbl. x/s - arkeritic								
	46-52 trending to fels porphyry								
	52-52.5 granite dyke @ 45 <sup>0</sup> to ca.								
	52 str. py @ contact zone @ 52.5	85-2-52							24
	py splashes thur matrix								
58-129.5	Potassic Granite allotriomorphic granular texture, coarse grained, orth. fels - lt to mod. diss py + occ cpy, pseudo Grecc'd healed w/ chlorite fr. @40 <sup>0</sup> , Lt to dk green	85-2-77							16
	chlorite w/ loc mod f. diss py	8085	58	60	2.0	.01	.01	.001	



CLAIM NO. PATHFINDER

## DIAMOND DRILL RECORD

PROPERTY PATHFINDER

HOLE NO. 85-3 1/1

LATITUDE 71 + 23 E

ELEVATION 945 meters

BEARING 272<sup>0</sup>

DEPTH 55ft(17m)

STARTED May 28, 1985 COMPLETED May 29, 1985

DEPARTURE 94 + 69 N

SECTION

DIP -45<sup>0</sup>

DRILLED BY CONSOLIDATED BOUNDARY

LOGGED BY L. SOOKOCHOFF P.Eng.

DEPTH FEET	FORMATION	SAMPLE NO.	FROM	TO	WIDTH ft	ASSAYS		
						Cu	Ag	Au
0-15	CASING							
15-26	MASSIVE SULFIDE ZONE - 90% pyr w/ 5% qtz as str. @ 40 <sup>0</sup> and irreg. pockets, rare cpy. str. @ 45 <sup>0</sup>	3806	15	19	4.0'	.58	.42	.138
	22-23.5 sil'd skarn, - aphanitic pinkish, pseudo brecc'd	3087	19	23	4.0'	.44	.25	.018
	23.5-26 nodular py. -5% py up to 1/2" rare w/ black chlorite	3088	23	26	3.0'	.34	.25	.022
26-42.5	Skarn - highly silicified, ps. brecc'd, w/ lt. qtz str. @ 10 <sup>0</sup> 80 <sup>0</sup> 30-42.5 blackish sil'd aph. rare q. vl. @ 80 <sup>0</sup> patchy diss py + po							
	39 qtz v.l. ll. to ca.							
425-55	Dacitic - gray to porph. texture 48-55 Traehytic - meta volc. gray to blackish aphanitic. H - sil'd w/ sub. hbl. x/s ll to c/a							
	55 - End of Hole							
	MASSIVE SULFIDE		15	26	11.0			.062

CLAIM NO. PATHFINDER**DIAMOND DRILL RECORD**PROPERTY PATHFINDERHOLE NO. 85-4 1/1LATITUDE 71 + 25 EELEVATION 945 metersBEARING 272<sup>0</sup>DEPTH 44ft (14m)STARTED May 29, 1985 COMPLETED May 29, 1985DEPARTURE 94 + 69 N

SECTION

DIP -60DRILLED BY CONSOLIDATED BOUNDARYLOGGED BY L. SOOKOCHOFF P.Eng

DEPTH FEET	FORMATION	SAMPLE NO.	FROM	TO	WIDTH	ASSAYS			
						Cu	Ag	Au	Au ppb
0-12	CASING				ft				
12-24	Skarn - heavily sil'd blotchy pinkish mod. qtz. str. @ 40 <sup>0</sup> + 30 <sup>0</sup> diss py								
	17-18 nodular py assoc w/ qtz								
	23.5-24 Qtz @ 80 <sup>0</sup>								
24-44	Dacitic - aphanitic, dk grey, sil'd; H trachytic hbl. lt. diss py	85-4-35							7
	32-36 H gray aph w/ lt py								
	36-44 darkish - skarny, mod - lt diss py - lt - mod q - str. variable								
	43.5 - 1/4" py @ 40 <sup>0</sup>								
	44 - End of Hole								
	44 - Hit slope								

CLAIM NO. PATHFINDER**DIAMOND DRILL RECORD**PROPERTY PATHFINDERHOLE NO. 85-5 1/4LATITUDE 71 + 39 EELEVATION 944 metersBEARING 270<sup>0</sup>DEPTH 367 ft (112m)STARTED May 30, 1985COMPLETED June 1, 1985DEPARTURE 94 + 85 N

SECTION

DIP -50<sup>0</sup>DRILLED BY CONSOLIDATED BOUNDARYLOGGED BY L. SOOKOCHOFF P.Eng.

DEPTH FEET	FORMATION	SAMPLE NO.	FROM	TO	WIDTH	ASSAYS			
						Cu	Ag	Au	Au ppb
0-17	CASING								
17-18	GRANITE - hypidiomorphic granular texture blocky, diss py K par								
18-23.5	MASSIVE SULFIDE ZONE:	3089	18	20	2.0	.26	.20	.144	
	18-20 in K par granite as veins @ 40 <sup>0</sup> and patches 20% sulfides py veins + patches, pyrr. splashes.	3090	20	22	2.0	.28	.14	.036	
	20-23.5 80% sulfides pyrr. centrally w/ py @ ends @ 40 <sup>0</sup>								
23.5-96.5	FELDSPAR PORPHYRY - Anhedral fels to 44" in a gray aphanitic matrix H diss py	85-5-27							3
	30- 96.5 gray pinkish aphanitic matrix w/ up to 75% fels phenos blackish chloritic matrix + mod py on fr, loc heavy py @ 37.5-3" good py on occ fr @ 40 <sup>0</sup> - other H diss py.	85-5-32							53

CLAIM NO. ....

**DIAMOND DRILL RECORD**

PROPERTY .....

HOLE NO. 85-5 2/4

LATITUDE .....

ELEVATION .....

BEARING .....

DEPTH .....

STARTED .....

COMPLETED .....

DEPARTURE .....

SECTION .....

DIP .....

DRILLED BY .....

LOGGED BY .....

DEPTH FEET	FORMATION	SAMPLE NO.	FROM	TO	WIDTH	ASSAYS		
								Au ppb
	Qtz - fels dykes @							
47	1" @ 70 <sup>0</sup>							
50	2" @ 70 <sup>0</sup>							
55	1" @ 70 <sup>0</sup>							
57	9" @ 45 <sup>0</sup>							
	51 - heavy py 1" @50 <sup>0</sup> and ½" pyrr @20 <sup>0</sup>							
96.5-106	Andesitic Tuff: Green, aphanitic to fine grained porphyritic - shards and hbl x/s + nodules zoolites f. diss py on fr. @ 35 <sup>0</sup>							
106-152	FELDSPAR PORPHYRY same as 23.5-91.5 more chloritic altnof matrix rare py, occ q-fels vein @ 70 <sup>0</sup>							
	130' - 1" 108' - 1" 145' - 1" @ 85 <sup>0</sup>							
	146-147 10% sulfides @ 70 <sup>0</sup>							
152-174	GRANITE - allot. granular texture. lt matics as washy chlorite							

85-5-167

12



CLAIM NO. ....

**DIAMOND DRILL RECORD**

PROPERTY .....

HOLE NO. 85-5 3/4

LATITUDE ..... ELEVATION ..... BEARING ..... DEPTH ..... STARTED ..... COMPLETED .....

DEPARTURE ..... SECTION ..... DIP ..... DRILLED BY ..... LOGGED BY .....

DEPTH FEET	FORMATION	SAMPLE NO.	FROM	TO	WIDTH	ASSAYS		
								Au ppb
174-182	SKARN - Pinkish patchy, highly sil'd	85-5-177						71
	fine-granular texture w/ local e.p. patches							
	obscure breccia texture w/ rounded							
	frags up to 1" mod. f - m diss py							
	182- contact @ 65 <sup>0</sup>							
182-197	SKARN - Pinkish patchy + epidote							
	aph. to f.g. w/ niliceous dykes @							
	209. @ 65 <sup>0</sup> 1.5', 217 - 9/3 rand mil							
	303-2' @ 70 <sup>0</sup> , 308-2' @ 40 <sup>0</sup>							
297-314	META VOLCANICS - darkish sil'd	85-5-242						9
	trending to skarn @ 314							



CLAIM NO. PATH FINDER

## DIAMOND DRILL RECORD

PROPERTY PATHFINDER

HOLE NO. 85-6 1 of 3

71 + 45 E

LATITUDE

ELEVATION 933m

BEARING 155°

DEPTH 157' (51m)

STARTED June 2, 1985

COMPLETED June 3, 1985

95 + 40 N

DEPARTURE

SECTION

DIP -40°

DRILLED BY Consolidated Boundary

LOGGED BY L. Sookochoff, P.Eng.

DEPTH FEET	FORMATION	SAMPLE NO.	FROM	TO	WIDTH	ASSAYS			
						Cu	Ag	Au	Au <sub>DOB</sub>
0 - 15	CASING								
15 - 66.5	FELDSPAR PORPHYRY - as in 85-5 but texture (7 met'm)								
	sub. fels phenos and trachitic @ 35°, lt to mod diss py & diss								
	str., rare calcite v.l & pockets								
	contact @ 40°								
66.5 - 78	ANDESITE TUFF - Dirty grayish, green & pinkish w/ fels phenos & pockets								
	zeolites, black shards & hbl. phenos, aphenitic to f.g.								
	contact @ 35°								
78 - 135.7	FELDSPAR PORPHYRY - As at 15 - 66.5								
	Obscure fels (20%) sub. phenos, random up to 1/4" in a chloritic pinkish matrix,								
	rare lt to diss py								
	90 - 92 - granite - peppery texture								
	anhedral chloritic mafics								
	90 - cont. @ 85°, 92 cont. @ 45°								
	-								

CLAIM NO. \_\_\_\_\_

# DIAMOND DRILL RECORD

PROPERTY \_\_\_\_\_

HOLE NO. 85 - 6

LATITUDE \_\_\_\_\_ ELEVATION \_\_\_\_\_ BEARING \_\_\_\_\_ DEPTH \_\_\_\_\_ STARTED \_\_\_\_\_ COMPLETED \_\_\_\_\_

DEPARTURE \_\_\_\_\_ SECTION \_\_\_\_\_ DIP \_\_\_\_\_ DRILLED BY \_\_\_\_\_ LOGGED BY \_\_\_\_\_

DEPTH FEET	FORMATION	SAMPLE NO.	FROM	TO	WIDTH	ASSAYS			
						Cu	Ag	Au	Au ppb
	107 ½" irreg py @ 65°								
	127 > alt'r & > obscure texture								
	128.6" massive py @ 70°								
	130.5 - 132 granite - peppery @ 60°								
135.7 - 154.5	MASSIVE SULFIDE ZONE	3091	135.7	140.3	4.6'	.50	.21	.010	
	135.7 - 140.3 - massive pyrr w/ sep								
	4" py irreg.								
	140 - 142 granite - peppery texture								
	allot. gr. , h loc. chl. alt'r, rare patches py w/ lt. cpy.								
	142 - 147 - mixed - pyrr &	3092	142	147	5.0	.74	.41	.152	
	py as irregular bands & patches in								
	w/ sil. matrix, black chl. on fr.								
	147 - 151 mainly pyrr 60% in w/ quartz brecc'd & healed	3093	147	151	40	.27	.11	.036	
	151 - 154.5 massive to 153 pyrr w/ cpy	3094	151	154.5	3.5	.94	.43	.052	
	10 - 1 trending to 40% m.s. to 154.5								
154.5 - 167	FELDSPAR PORPHYRY - Obscure fels phenos in chloritic matrix								

WESTERN MINER-PRESS LTD.  
STANDARD FORM NO. 502



CLAIM NO. PATHFINDER **DIAMOND DRILL RECORD** PROPERTY PATHFINDER HOLE NO. 85 - 7

LATITUDE 71 + 45 E ELEVATION 933 m BEARING 155° DEPTH 217' (66m) STARTED June 3, 1985 COMPLETED June 5, 1985

DEPARTURE 95 + 40 N SECTION \_\_\_\_\_ DIP -60° DRILLED BY Consolidated Boundary LOGGED BY L. Sookchohoff, P. Eng.

DEPTH FEET	FORMATION	SAMPLE NO.	FROM	TO	WIDTH	ASSAYS			
0 - 12	CASING								
12 - 67	FELDSPAR PORPHYRY - Lt. gray < ¼' fels phenos set in a chloritic aph matrix locally pinkish lt. py fr. @ 45° 22 - 28 Alaskite - allot tex. , peppery tex chl. on fr., lt. diss. py. 38.5 - 40 Alaskite 50 - trachytic @ 45° 52 - rare py								
67 - 73	ANDESITE TUFF - dirty gray-green w/ black shards and fels contact @ 70° & 45°								
73 - 180	FELDSPAR PORPHYRY - as 12 - 67 75' ½" irreg. py @ 60° 96 ½" @ 85° Quartz 81 - 3" @ 70° 88 - 1" @ 60°, 128 2" @ 85° 107 - lt. to no py 146 2" py var @ 45°, 152' py & quartz zone 1' @ 45°								

WESTERN MINER-PRESS LTD.  
STANDARD FORM NO. 502



CLAIM NO. PATHFINDER

# DIAMOND DRILL RECORD

PROPERTY PATHFINDER

HOLE NO. 85 - 8

LATITUDE 71 + 45 E

ELEVATION 933m

BEARING 180°

DEPTH 167' (51m)

STARTED June 5, 1985

COMPLETED June 6, 1985

DEPARTURE 95 + 40 N

SECTION

DIP - 45°

DRILLED BY Consolidated Boundary

LOGGED BY L. Sookochoff, P.Eng.

DEPTH FEET	FORMATION	SAMPLE NO.	FROM	TO	WIDTH	ASSAYS			
0 - 12	CASING								
12 - 77	FELDSPAR PORPHYRY - Random grayish white sub-and fels phenos < ¼" 35% in a matrix of aphanitic blackish chlorite. No alt'n of feldspars Quartz veins - 34', 8" @ 45° and 45° 47', 1" @ 0°, 49' 2.5' @ 45° and 35° 71, 1" @ 35°, 72 - 77 4x < 6" @ 45° to 60° lt to no py (no alt'n on contact) 57 more obscure, more alaskite w/ fels porphyry.								
77 - 86	ANDESITE TUFF, Black shards lt. and fels phenos in a gray green f.g. to aph matrix								
86 - 132	FELDSPAR PORPHYRY - same as 12 - 77, 88 - 4" quartz @ 75° Alaskite - 102 - 106 @ 35° Skarn - 106 - 108 - pinkish green silicified Alaskite - 108 - 109 @ 10° 109 + more obscure, more chloritic & prop alt'n								





# DIAMOND DRILL RECORD

CLAIM NO. PATHFINDER

PROPERTY PATHFINDER

HOLE NO. 85 - 9

LATITUDE 71 + 45 E ELEVATION 933m BEARING 180° DEPTH 207 (63m) STARTED June 7, 1985 COMPLETED June 8, 1985

DEPARTURE 95 + 40 N SECTION \_\_\_\_\_ DIP -60° DRILLED BY Consolidated Boundary LOGGED BY L. Sookochoff, P. Eng.

DEPTH FEET	FORMATION	SAMPLE NO.	FROM	TO	WIDTH	ASSAYS			
									Au ppb
0 - 13	CASING								
13 - 65.5	FELDSPAR PORPHYRY - Grayish - white anhedral to subhedral feldspar phenos random 30% set in a matrix of blackish f.g. - aph chlorite 21 - 27 Alaskite - peppery texture allot granular, no py. mod chlorite stringers @ 40°, 30° Contact @ 30° 37 pinkish w/ rare patches py								
65.5 - 73	ANDESITE TUFF - Grayish-green f.g. to aphanitic w/ black shards & rare fels & lt. diss. py. Contact @ 45° irregular @ 65.5 @ 73' 65°	85.9 - 72							21
73 -	FELDSPAR PORPHYRY - as 13 - 65.5 up to 35 fels < ½" lt - mod. diss py > py along fr. @ 70°, Cal occ. fr. Quartz (alaskite) @ 98 1.0 @ 10 102' ½" @ 0° lt. diss py > near quartz contact. Alaskite (Quartz fels) 80' 1.0' @ 45° barren 82 1" @ 60°, 98, 1.0' @ 20°, 95, 6" @ 45°, 102, ½" @ 0° Sharp - no alt'n on contact, 95 pockets f.g. py & rare lt cpy								

EASTERN MINER-PRESS LTD.  
 STANDARD FORM NO. 502

CLAIM NO. ....

**DIAMOND DRILL RECORD**

PROPERTY .....

HOLE NO. 85 - 9 .....

LATITUDE ..... ELEVATION ..... BEARING ..... DEPTH ..... STARTED ..... COMPLETED .....

DEPARTURE ..... SECTION ..... DIP ..... DRILLED BY ..... LOGGED BY .....

DEPTH FEET	FORMATION	SAMPLE NO.	FROM	TO	WIDTH feet	ASSAYS			
						Cu	Ag	Au	Au ppb
	99 - serp. on fr. plane @ 40° , lt py	85 9-99							8
	105.5 6" > siliceous @ 55°	85 9 -	99A						13
	110 quartz fels ½" @ 60°								
112 - 116	GRANITE - Felsic w/ phenos hbl. peppery textured w/ good py on fr. @ 75° & f.g.								
	patchy py in matrix & diss.	85.9-115							46
	Contact @ 10°								
116-123	FELDSPAR PORPHYRY								
	117 Quartz fels 6" @ 55°								
123 - 125	GRANITE - as 112-116 but less mafics								
	sharp unalt'd contact @ 35° rare diss py, lt. sercite, mafics ---> washy								
	chlorite on fr. @ 60°								
125 - 132	FELDSPAR PORPHYRY								
132 - 152.3	SULPHIDE ZONE	3002	132	134	2.0'	.46	.26	.060	
	132 - 132.8 20% m.s. as py irreg patches pyrr								
	132.8 - 134 stringer & v.l. sulfides								

CLAIM NO. ....

# DIAMOND DRILL RECORD

PROPERTY .....

HOLE NO. 85 - 9

LATITUDE ..... ELEVATION ..... BEARING ..... DEPTH ..... STARTED ..... COMPLETED .....

DEPARTURE ..... SECTION ..... DIP ..... DRILLED BY ..... LOGGED BY .....

DEPTH FEET	FORMATION	SAMPLE NO.	FROM	TO	WIDTH feet	ASSAYS			
						Cu	Ag	Au	Au ppb
	134 - 139 - occ. stringer m.s. @ 80°	3003	134	139	5/0'	.07	.05	.026	
	in feldspar porphyry								
	139 - 139.9 60% m.s.	3004	139	139.9	0.9	.27	.13	.028	
	139 - 151.5 occ. sul. stringers and patches								
	151.5 - 152.3 100% m. pyrr. @ 60°	3005	151.5	152.3	0.8	.35	.15	.030	
152.3 - 207	META - FELDSPAR PORPHYRY - Massive, rel. soft, w/ 6% mafics								
	lt. chlorite ireegular & anhedral								
	156.5 - 156.7 black - reddish cherty alt'd fels porphyry ?								
	158 - peppery texured, dark aph. pinkish	85 - 9	175						26
	w/ mod. random quartz stringers loc. variably SKARNY								
	w/ obscure sections FELDSPAR PORPHYRY 175 + > skarny w/ pink patches & loc. sections intrusive	85 - 9	197						24
	176.3 - 177.6 Quartz fels. @ 20°, occ patchy coarse py	85 - 9	205						25
	194 - 194.8 Granite - peppery texture @ 45°								
	194.8 - Feldspar porphyry - dark aph. matrix w/ diss py to lt granular								
	200 - 206 heavy skarn w/ ep & gar lt. to heavy sulphides								
	206 - 207 Granite - barren								
	207 END OF HOLE								

CLAIM NO. PATHFINDER

## DIAMOND DRILL RECORD

PROPERTY PATHFINDER

HOLE NO. 85 - 10

LATITUDE 71 + 45 E

ELEVATION 933m

BEARING 140°

DEPTH 187 feet (57m)

STARTED June 8, 1985

COMPLETED June 10, 1985

DEPARTURE 95 + 40 N

SECTION

DIP - 46°

DRILLED BY Consolidated Boundary

LOGGED BY L. Sookchoff, P.Eng.

DEPTH FEET	FORMATION	SAMPLE NO.	FROM	TO	WIDTH feet	ASSAYS			
						Cu	Ag	Au	Au ppb
0 - 10	CASING								
10 - 78	FELDSPAR PORPHYRY - occ. py stringers and v.l. @ 75°, 21' - 3/4" m.s., occ. fr. w/ py splashes and diss. py	85 - 10	67						5
	53 - 54 Quartz fels @ 80° - no alt'n on contact								
	56 - 59 > felsic w/ diss py								
65 - 78	ANDESITE (dacite) TUFF, occ. f. diss & patches py lt. - mod. 78 - contact @ 80°								
78 - 92	FELDSPAR PORPHYRY								
92 - 96	META-SYENITE, Anhedral - sub hbl. phenos w/ occ pockets < 1/4" py								
96 - 123	FELDSPAR PORPHYRY, Pinkish								
123 - 145.5	META-SYENITE, Massive w/ mafics ---> chlorite & washy irreg stringers contact @ 75° mod - lt diss py - carbonated	80 - 10	125						29
145.5 - 147.2	SULFIDE ZONE 145.4 - 147.2 95% massive sulfide Zone @ 80°? 147.2 - 148 - brecc'd light syenite w/ diss zone cpy 152.5 - 152/0 Feldspar porphyry @ 40°	3006	145.4	148.1	2.7	2.52	1.55	.138	



CLAIM NO. PATHFINDER

# DIAMOND DRILL RECORD

PROPERTY PATHFINDER

HOLE NO. 85-11

LATITUDE 71 + 45 E ELEVATION 933m BEARING 140° DEPTH 217 feet (66m) STARTED June 10, 1985 COMPLETED June 11, 1985

DEPARTURE 95 + 40 N SECTION SECTION DIP - 60° DRILLED BY Consolidated Boundary LOGGED BY L. Sookochoff, P. Eng.

DEPTH FEET	FORMATION	SAMPLE NO.	FROM	TO	WIDTH	ASSAYS			
0 - 8	CASING								
8 - 15	Broken Boulders								
15 -	FELDSPAR PORPHYRY, 25% - sul								
	fels phenos < 1/2" m.a. dark blackish - gray aphanitic chloritic matrix,								
	lt diss sulf. locally fract @ 45°								
	52 - irreg 1/4" py @ 25°								
	Quartz - fels zone @								
	35 - 35.8 @ 40°								
	60 - 60.8 @ 40°								
	81.5 @ 05°								
65 - 75.5	SKARN - Pinkish and grayish green								
	dacitic w/ anhedral hbl X/s								
	75.5 @ 80° f.g. - lt. diss py.								
75.5-93.5	FELDSPAR PORPHYRY								
93.5-106	META-SYENITE, f - m.g. peppery texture								
	granular locally, lt. diss py								
	101 - 104.5 Fels porph								
	104.5 cont @ 10°								
	106 @ 10°								

WESTERN MINER-PRESS LTD.  
 STANDARD FORM NO. 502

CLAIM NO. ....

## DIAMOND DRILL RECORD

PROPERTY.....

HOLE NO. .... 85 - 11

LATITUDE ..... ELEVATION ..... BEARING ..... DEPTH ..... STARTED ..... COMPLETED .....

DEPARTURE ..... SECTION ..... DIP ..... DRILLED BY ..... LOGGED BY .....

DEPTH FEET	FORMATION	SAMPLE NO.	FROM	TO	WIDTH feet	ASSAYS		
106-125	FELDSPAR PORPHYRY							
	122 - 123.5 Meta-Syenite w/ lt mafics @ 50°							
125-130	META-SYENITE, Massive to f- m.g. lt. mafics ---> washy chlorite							
130-135.5	FELDSPAR PORPHYRY							
	134.5 - 135.5 darkish obscure lt sulfide zone							
135.5-140.5	META - SYENITE, lt- mod mafics (dioritic)							
140.5-143.5	SUFIDE ZONE							
	140.5 1.5" py and po	3008	140.5	143.5	3.0'	.37	.23	.014
	3" quartz - py and po - equal							
	py frags 10% cpy							
	total 70% sulfides							
	143.5 cont. @ 45°							
143.5-193	FELDSPAR PORPHYRY, Commonly alt'd - underlying porphyritic texture							
	143.5 - 145.5 alt'd zone syenitic							
	159 + > diss py and po							
	168.5 - 173 SKARN - pinkish, ep sil'd w/ lt - mod py							
	173 - 176 Fels. porph							
	176 - SKARN							





CLAIM NO. PATHFINDER

# DIAMOND DRILL RECORD

PROPERTY PATHFINDER

HOLE NO. 85 - 12

LATITUDE 71 + 45 E

ELEVATION 933m

BEARING 140°

DEPTH 197' (60m)

STARTED June 12, 1985

COMPLETED June 13, 1985

DEPARTURE 95 + 40 N

SECTION

DIP -70°

DRILLED BY Consolidated Boundary

LOGGED BY L. Sookochoff, P. Eng.

DEPTH FEET	FORMATION	SAMPLE NO.	FROM	TO	WIDTH	ASSAYS			
0 - 10	CASING								
10 - 13	FRAGS								
13 - 62	FELDSPAR PORPHYRY								
	13 - 27 Skarny - pinkish w/ loc. m.s.								
	< 1/4" and patches								
	36 - 38 Peppery syenite @ 50°								
	42' Quartz fels. 6" @ 35°								
62 - 72	ANDESITE TUFF, Gray- green massive								
	f.g. w/ hbl. sub X/s and shards, lt to mod py								
72 - 94	FELDSPAR PORPHYRY w/ loc. sections (94 - 101)								
	peppery syenite med grained and lt diss py								
	101 - 109 porphyritic								
	109 - 111.5								
	111.5 - 114 porphyritic								
	114 - 121 Obscure porph								
121-137.1	MONZONITE - Quartz Diorite. Allot gr. texture								

STERN MINER-PRESS LTD.  
 STANDARD FORM NO. 502





CLAIM NO. ....

## DIAMOND DRILL RECORD

PROPERTY..... HOLE NO. 85-13

LATITUDE..... ELEVATION..... BEARING..... DEPTH..... STARTED..... COMPLETED.....

DEPARTURE..... SECTION..... DIP..... DRILLED BY..... LOGGED BY.....

DEPTH FEET	FORMATION	SAMPLE NO.	FROM	TO	WIDTH	ASSAYS		
						Cu ppm	Ag ppm	Au ppb
	f. diss py patches on fr. @ 40° & loc mod-heavy py on fr.							
	116 - 126 Trending to heavy skarn - pinkish and ep	85 - 13	- 137			9	.3	2
	126 - 137 fresher							
	137 + > chlorite. mod py on fr.							
140 - 152	FELDSPAR PORPHYRY - Meta <sup>6</sup> propylized - locally distinct - friable sections - mod chlorite							
	152 contact @ 35°							
152 - 167	QUARTZ DIORITE - Meta <sup>8</sup> trending to pinkish & pseudo brecc'd w/ blebs: irreg creamy alt'n Allot - tex.	85 - 13	- 146			12	.5	3
	167 ½" gouge @ 40°							
167 - 181.5	GREENSTONE - 80% chlorite w/ obscure breccia frags & mod quartz random str. 176.5 - 181.5 meta quartz diorite Mod py on fr							

CLAIM NO. ....

## DIAMOND DRILL RECORD

PROPERTY..... HOLE NO. 85 - 13

LATITUDE..... ELEVATION..... BEARING..... DEPTH..... STARTED..... COMPLETED.....

DEPARTURE..... SECTION..... DIP..... DRILLED BY..... LOGGED BY.....

DEPTH FEET	FORMATION	SAMPLE NO.	FROM	TO	WIDTH	ASSAYS		
						Cu ppm	Ag ppm	Au ppb
181.5 - 194	QUARTZ DIORITE - breccia - as							
	152 - 167 but no skarn (pinish & ep)							
	lower deg. of alt'n							
	185 trending to pinkish	85 - 13	- 184			70	1.0	11
194 - 195	GRANITE - @ 15°							
	207 - breccia - hard & schistose							
	occ ep patches							
217 - 223	QUARTZ DIORITE - Meta prop fels							
	silic'd <sup>4</sup>							
223 - 243	FELDSPAR PORPHYRY - & sul fels							
	phenos < 1/8" random set in a dark blackish matrix aphanitic,	85 - 13	- 210			84	1.0	33
	hbl X/s - alt'n - lt. diss py	85 - 13	- 230			23	.8	2
243 - 288	ANDESITE TUFF (dacite) Pinkish f.g. matrix to seriate, hbl phenos							
	& shards & whitish gray sub - fels	85 - 13	- 278			8	.5	1
	to 1/8", lt. carb on fr. @ 50°							
	lt diss py							

CLAIM NO. ....

## DIAMOND DRILL RECORD

PROPERTY .....

HOLE NO. 85 - 13

LATITUDE ..... ELEVATION ..... BEARING ..... DEPTH ..... STARTED ..... COMPLETED .....

DEPARTURE ..... SECTION ..... DIP ..... DRILLED BY ..... LOGGED BY .....

DEPTH FEET	FORMATION	SAMPLE NO.	FROM	TO	WIDTH	ASSAYS		
						Cu ppm	Ag ppm	Au ppb
288 - 309	GREENSTONE PORPHYRY - 90% chloritic w/ obscure fels. & hbl X/s. Mod diss. str. quartz - carb	85 - 13 - 307				15	.6	1
	297 - 298.5 Pinkish gr. dyke @ 30° no alt'n cont. & 45°							
309 - 332	ANDESITE TUFF - hard - dacitic occ on fr. @ 40°							
332 - 365	DACITE TUFF - (alt'n at andesite?) porph. lt. pink gray green w/ coarse random mod pink frags hbl. & shards - hard unaltered	85 - 13 - 389				8	.9	7
	364 - 365 alt'd chloritic zone							
365 - 374	GRANITE - Pinkish allot. m.g. lt. diss py	85 - 13 - 395				53	.9	190
374 - 401	SKARN - Chloritic w/ obscure silic'd frags random locally skarny & silic'd large patches ep							
401 - 444.6	DACITIC TUFF - as 332 - 365 Pink porph tuff w/ maf > chl.	85 - 13 - 417				24	.8	1

CLAIM NO. ....

## DIAMOND DRILL RECORD

PROPERTY..... HOLE NO. 85 - 13

LATITUDE..... ELEVATION..... BEARING..... DEPTH..... STARTED..... COMPLETED.....

DEPARTURE..... SECTION..... DIP..... DRILLED BY..... LOGGED BY.....

DEPTH FEET	FORMATION	SAMPLE NO.	FROM	TO	WIDTH	ASSAYS		
						Cu ppm	Ag ppm	Au ppb
444.6-450	FELDSPAR PORPHYRY - Greenstone cont @45° rel. hard. unalt'd - no py							
45- 454	DACITE TUFF - as 332 - 365 @ 40°							
454 - 458	GREENSTONE - local quartz & flowage @ 40° w/ py and po 456 - 58							
458 - 467	FELDSPAR PORPHYRY and greenstone							
467 - 493	DIORITIC - flows seriated to porph arg'd matrix, lt. py 484 cont. @ 25° and between flows hard peppery textured, rounded shards of greenstone	85 - 13 - 456						55
493 - 506	SKARN - Pinkish granitic pseudo brecc'd appearance, hard, slic'd. w/ pink & lt. ep. patches chloritic matrix	85 - 13 - 494						455
		85 - 13 - 497				146	1.1	540
	493 - siliceous zone w/ sulfides @ 30° and bands py w/ diss patches ep.	85 - 13 - 510						48
	497.2 - .8 massive sulfides cont @ 70° py 60% po 40% amoebic texture	85 - 13 - 527						4
	498 - 498.1 - 1" irreg quartz - shattered w/ black chloritic matrix cont @ 20°	85 - 13 - 566						20
		85 - 13 - 566						19



CLAIM NO. ....

**DIAMOND DRILL RECORD**

PROPERTY .....

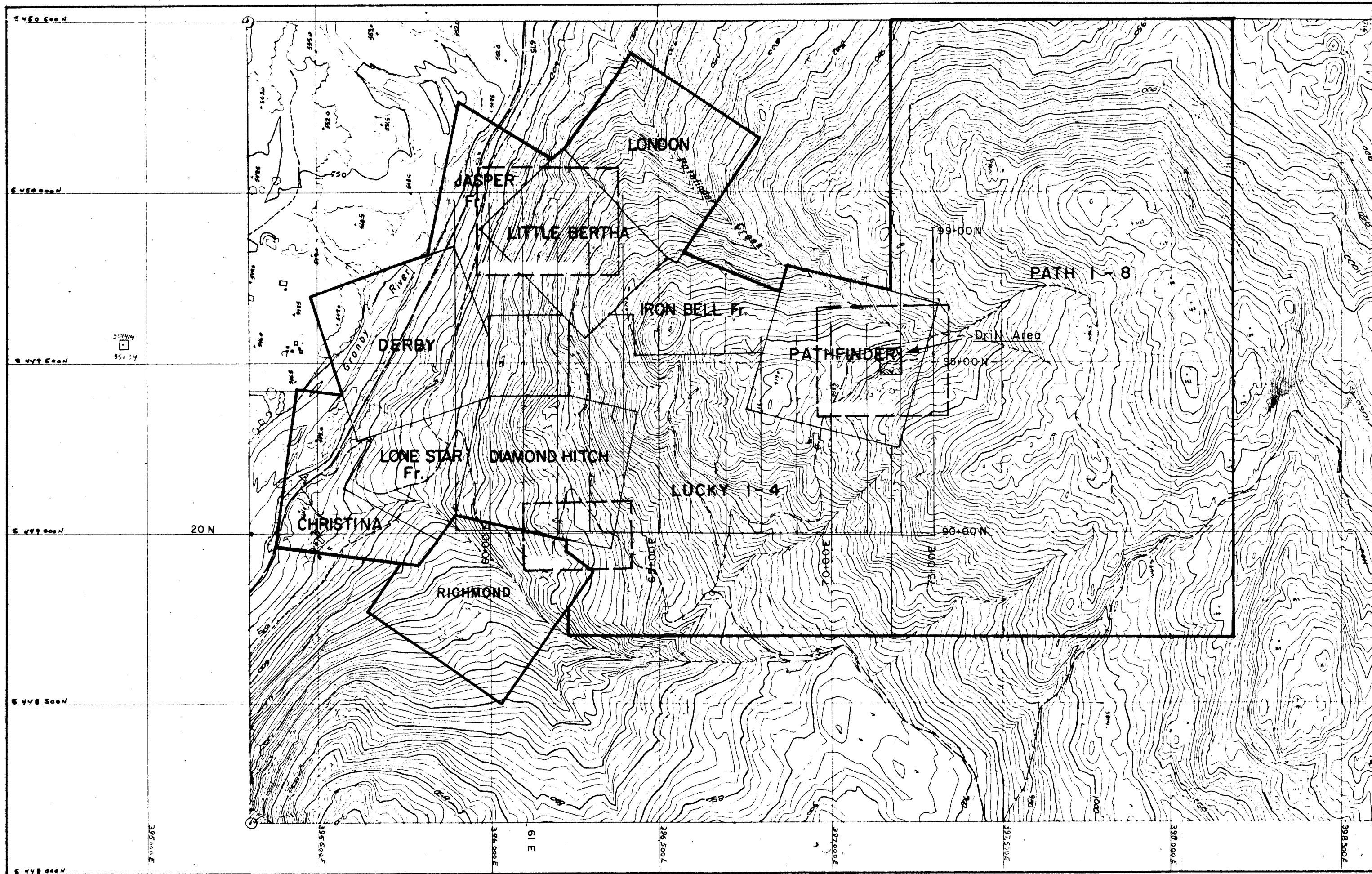
HOLE NO. 85 - 13

LATITUDE ..... ELEVATION ..... BEARING ..... DEPTH ..... STARTED ..... COMPLETED .....

DEPARTURE ..... SECTION ..... DIP ..... DRILLED BY ..... LOGGED BY .....

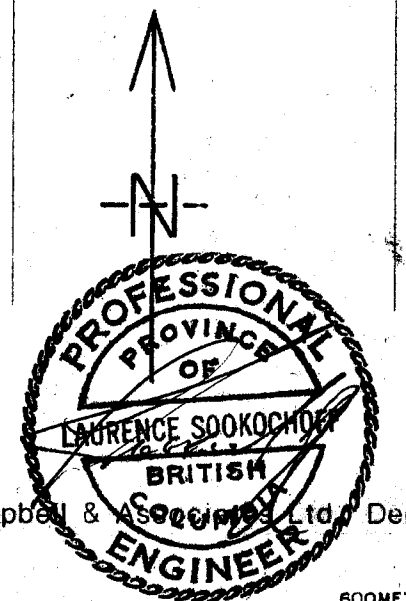
DEPTH FEET	FORMATION	SAMPLE NO.	FROM	TO	WIDTH	ASSAYS		
						Cu ppm	Ag ppm	Au ppb
	498.1 - 499.5 felsic zone - mainly quartz fels.							
	w/ chloritic irreg. on fr. and amoel							
	499.5 - 506 brecc'd skarn zone -							
	pinkish volc frags and quartz' - rare rounded, general							
	brec'n and texture, mod to f. diss. py	85 - 13	- 500					730
	506 sharp contact @ 45° unaltered							
506 - 568	FELDSPAR PORPHYRY - Lt. white - gray enh to							
	fels. phenos < ¼" and black shards in a f.g.to aph matrix							
	509.5 - 513 brecc'd quartz fels frags in dense chloritic matrix w/ mod							
	f. diss py cont. @ 45°							
	518 Skarny - pinkish fels phenos in a peppery f.g. matrix							
	w/ shards patches black chlorite up to 3/4" irregular							
	527 Flow contact @ 45°							
	Andesectic dykes @ 548.5 - 549 w/ shards contact @ 90°							
	558.5 - 560							
	561 - 561.5 contact @ 40°							
	563 - 563.5							





**GEOLOGICAL BRANCH  
ASSESSMENT REPORT**

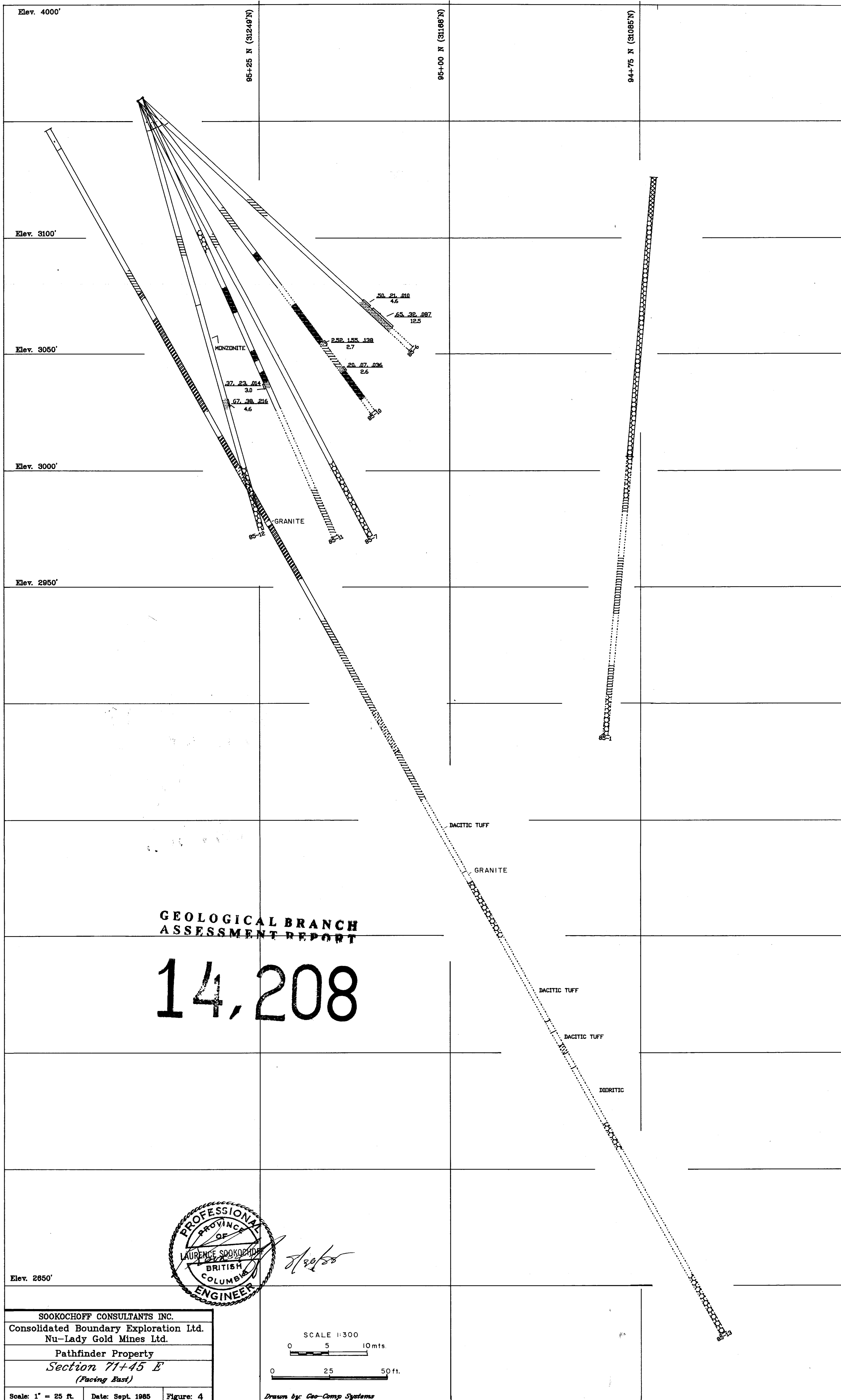
**14,208**



After Dolmage, Campbell & Associates Ltd. Dec. 1980

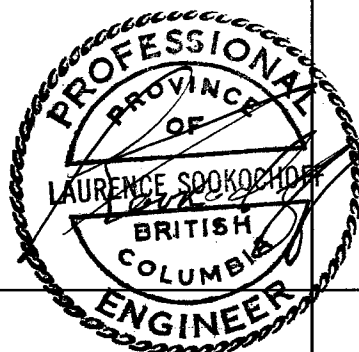


Sookchoff Consultants Inc.	
Consolidated Boundary Exploration Ltd.	
Nu-Lady Gold Mines Ltd.	
PATHFINDER PROPERTY	
<b>INDEX AND CLAIM MAP</b>	
SCALE 1:10,000	Sept. 1985 FIG. 2



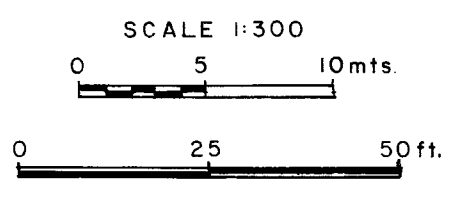
**GEOLOGICAL BRANCH  
ASSESSMENT REPORT**

**14,208**



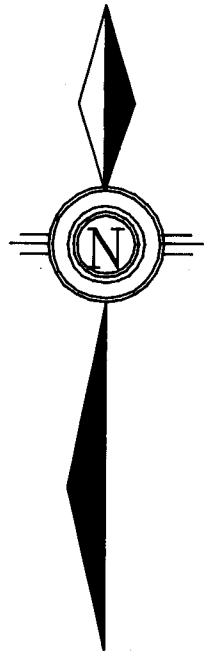
*2/29/85*

SOOKOCHOFF CONSULTANTS INC.		
Consolidated Boundary Exploration Ltd.		
Nu-Lady Gold Mines Ltd.		
Pathfinder Property		
Section 71+45 E		
(Facing East)		
Scale: 1" = 25 ft.	Date: Sept. 1985	Figure: 4



Drawn by: Geo-Comp Systems

95+50 N



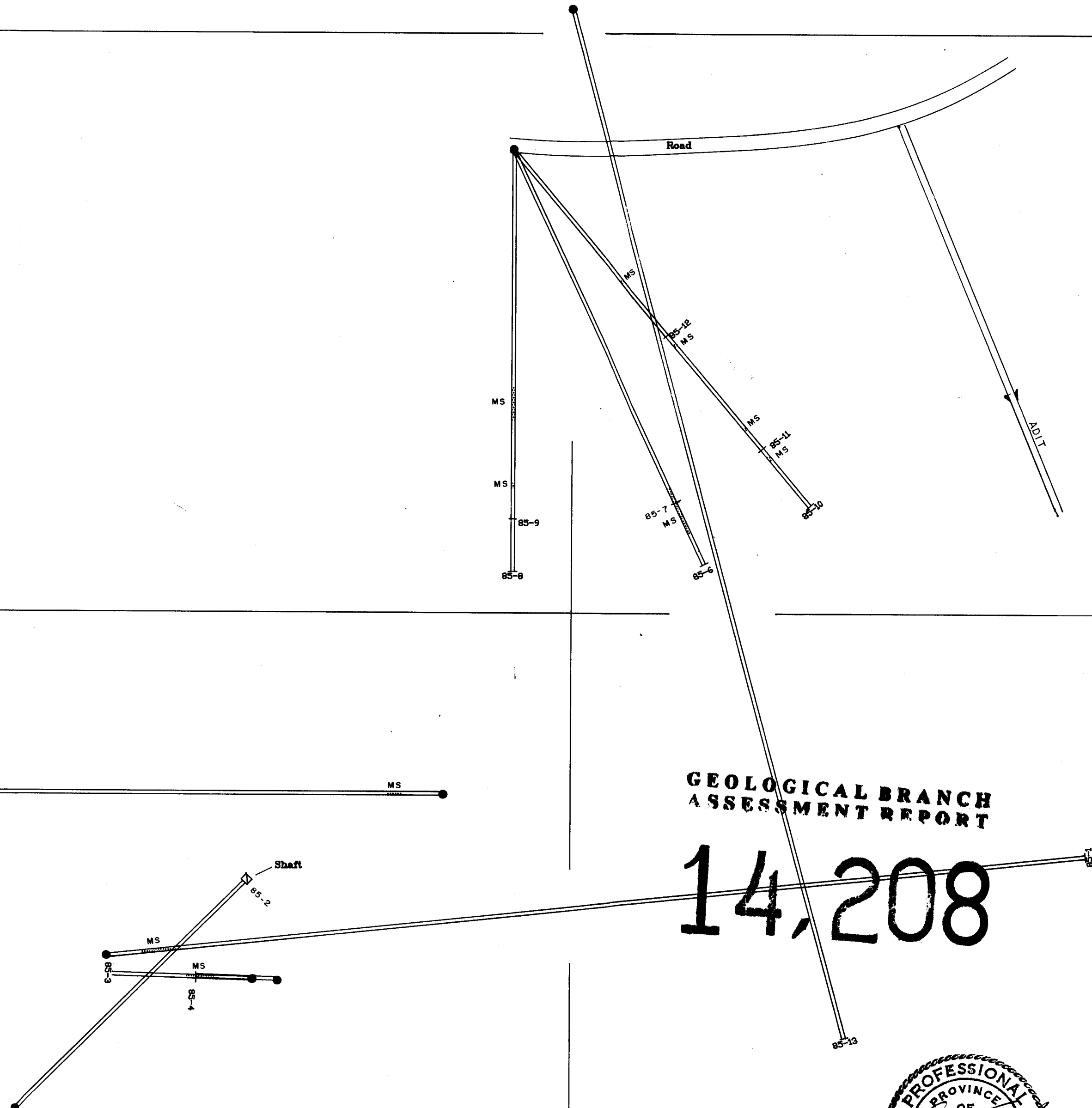
95+00 N

94+50 N

71+00 E

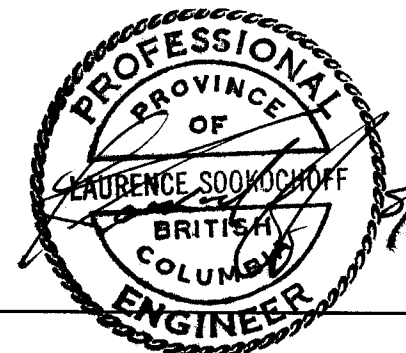
71+50 E

Drawn by: Geo-Comp Systems



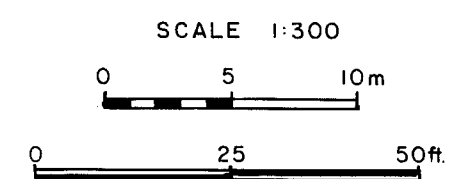
GEOLOGICAL BRANCH  
ASSESSMENT REPORT

14,208



72+00 E

MS MASSIVE SULPHIDES



SOOKOCHOFF CONSULTANTS INC.		
Consolidated Boundary Exploration Ltd.		
Nu-Lady Gold Mines Ltd.		
Pathfinder Property		
<i>DRILL HOLE LOCATIONS</i>		
Scale: 1" = 25 ft.	Date: Sept. 1985	Figure: 5