

85-73-14245

PERCUSSION DRILLING REPORT
ON THE KAREN 4 (Rec. No. 751)
MINERAL CLAIM

03/86

50° 38' N, 120° 29½' W, NTS 921/9W

KAMLOOPS MINING DIVISION
AFTON OPERATING CORPORATION

FILMED

**GEOLOGICAL BRANCH
ASSESSMENT REPORT**

BY **14,245**

LORNE A. BOND
SENIOR GEOLOGIST

March 6, 1985

Kamloops, B.C.

TABLE OF CONTENTS

Introduction	Page	1
Drilling Results		3- 4
Assay Results		6- 7
Statement of Costs		8
Author's Qualifications		9

MAPS

Index Map 1:50,000	Page	2
Surface Plan 1:3000		5

PERCUSSION DRILLING REPORT ON THE KAREN 4

(Rec. No. 751) MINERAL CLAIM)

50° 38' N, 120° 29½' W, NTS 921/9W

KAMLOOPS MINING DIVISION
AFTON OPERATING CORPORATION

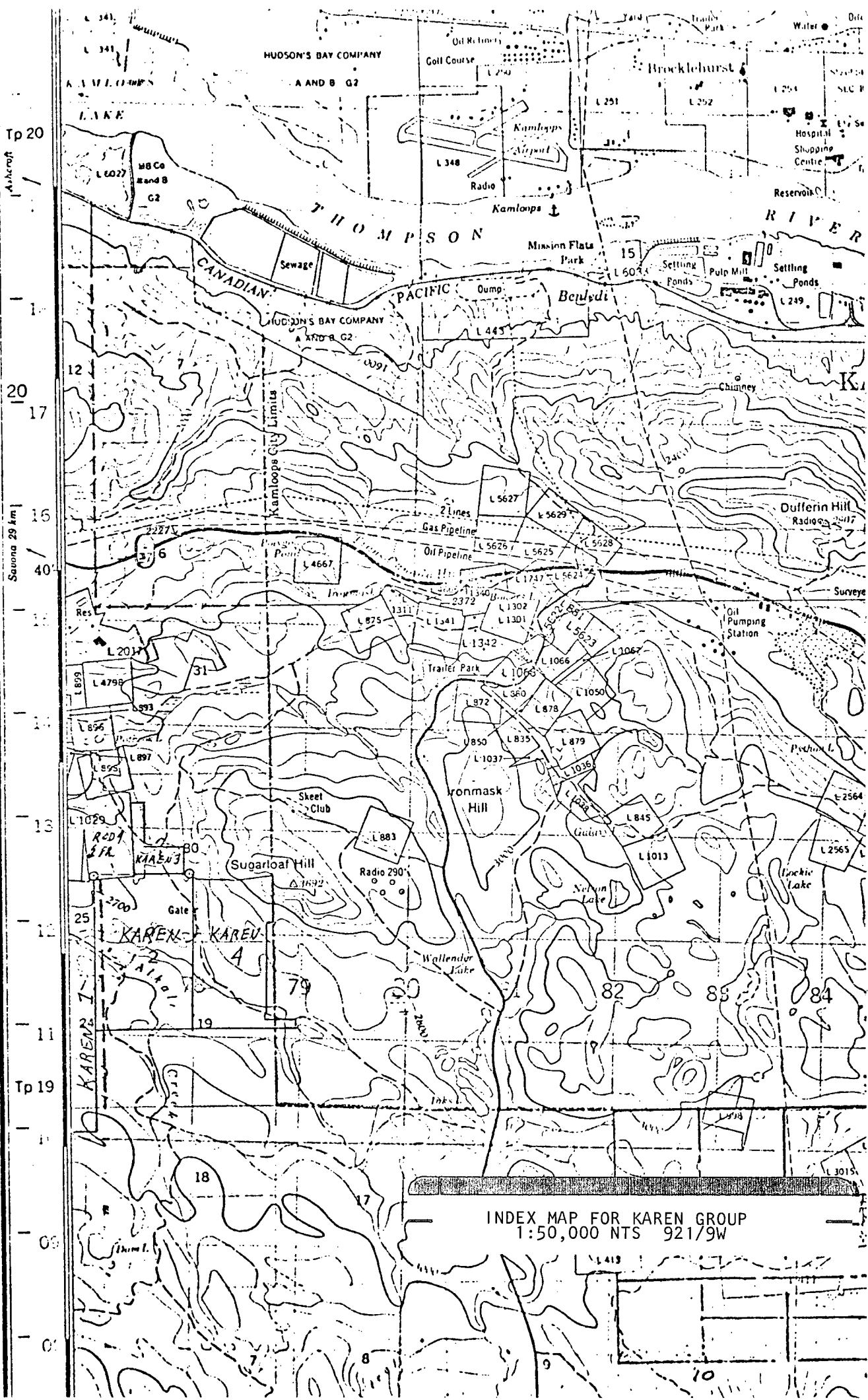
INTRODUCTION

The Karen 4 mineral forms part of the Karen Group of mineral claims consisting in total of:

Karen 1	Record No. 734	20 Units
Karen 2	Record No. 735	6 Units
Karen 3	Record No. 736	4 Units
Karen 4	Record No. 751	6 Units
Rod 4 Fraction	Record No. 14	1 Unit

The Karen Group is located approximately 13 km West of Kamloops, immediately West of Sugarloaf Hill and 1½ km Southeast of the Afton open pit mine. Access to the property is by all weather gravel roads from the Trans-Canada Highway and from the Kamloops-Logan Lake Highway.

The Karen claims were initially located in March, 1977 by A. J. Reed, Agent for Afton Operating Corporation. During the period February 19th., - 25th., 1985, Afton Operating Corporation completed 274.3 meters of percussion drilling in 3 vertical drill holes, 5 cm in diameter. The objective of the program was to obtain geological and assay information along the southern Iron Mask pluton-Nicola volcanics contact.



Tp 20
 Aircraft

20
 17
 15
 40
 13
 12
 11
 Tp 19

Sauvona 29 km

INDEX MAP FOR KAREN GROUP
 1:50,000 NTS 921/9W

DRILLING RESULTS

(Coordinates are Afton Mine Grid)

<u>Hole No. Q-258</u>	Latitude:	1007.80
	Departure:	16811.22
	Elevation:	2635.50
	Depth to Bedrock:	18.3 m
	Total Depth:	91.4 m

Log:

0 - 18.3 m	Overburden - Glacial till
18.3 m - 21.3 m	Altered (clay-rich) Iron Mask diorite
21.3 m - 36.6 m	Grey-green Iron Mask diorite; contains 1-3% magnetite
36.6 m - 42.7 m	Grey-green Iron Mask diorite; coarse-grained plagioclase chips, possibly from a porphyritic section
42.7 m - 45.7 m	Orange coloration to chips (K-spar?); possible syenite on monzonite
45.7 m - 79.3 m	Grey-green Iron Mask diorite with magnetite
79.3 m - 91.4 m	Iron Mask diorite with an increasing proportion of pink feldspar chips

<u>Hole No. Q-259</u>	Latitude:	1760.14
	Departure:	15991.47
	Elevation:	2622.30
	Depth to Bedrock:	42.7 m
	Total Depth:	91.4 m

Log:

0 - 42.7 m	Overburden - Glacial till
42.7 m - 70.1 m	Red-brown Nicola volcanics; significant calcite content
70.1 m - 91.4 m	Red-brown Nicola volcanics; notable increase in the proportion of cream-colored plagioclase chips; calcite present throughout

<u>Hole No. Q-260</u>	Latitude:	3031.77
	Departure:	15514.22
	Elevation:	2627.80
	Depth to Bedrock:	27.4 m
	Total Depth:	91.4 m

Log:

0 - 27.4 m	Overburden - Glacial till
------------	---------------------------

Drilling Results
Hole No. Q-260 - Cont'd

27.4 m - 39.6 m	Dark grey-green Iron Mask diorite; contains 1-3% magnetite and noticeable white calcite veining
39.6 m - 48.8 m	Grey-green Iron Mask diorite; marked increase in cream-colored plagioclase chips; significant calcite
48.8 m - 91.4 m	Dark grey-green Iron Mask diorite; 1-5% magnetite throughout; lots of coarse white calcite chips

LB/wh



To Afton
mine site

POTHOOK
LAKE

To Kamloops
via Hwy #1

AFTON MINES LTD.
PRODUCTION LEASE

ROD
4 FR.

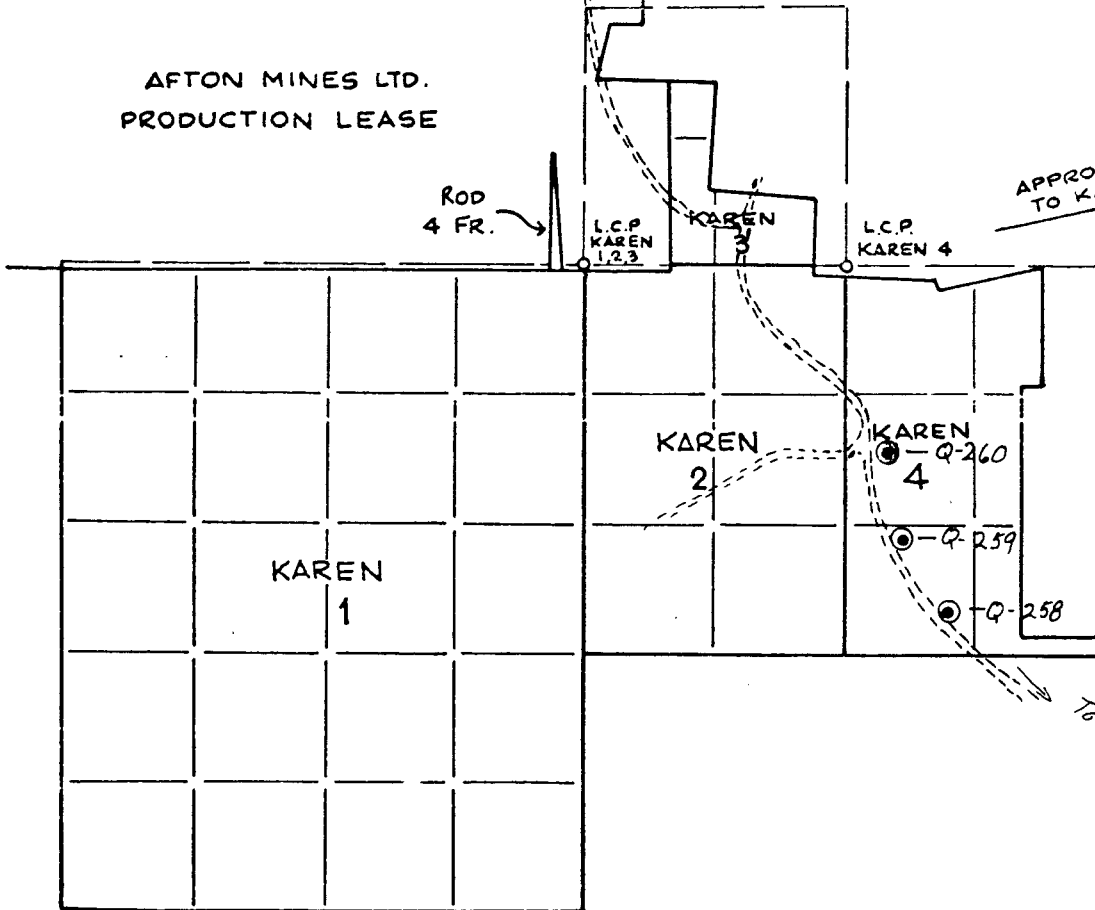
L.C.P.
KAREN
1,2,3

KAREN
3

L.C.P.
KAREN 4

APPROX. 9 KM.
TO KAMLOOPS

SUGARLOAF
HILL

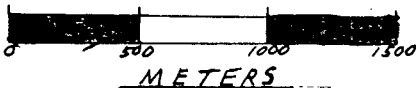


To Logan Lake
Hwy

⊙ - Percussion Drill Hole Site

KEY-MAP OF THE KAREN CLAIMS

KAMLOOPS M.D., B.C.



SCALE 1:3000

HTS 92 I/9/94

AFTON OPERATING CORPORATION

INTER-OFFICE LETTER

DATE: MARCH 6, 1985

COPIES TO:

TO: Lorne Bond

FROM: Joe Mihalech

WHEN FEASIBLE, CONFINE LETTER
TO ONE SUBJECT

RE:

Assays On Percussion Drill Hole Samples.

The following are assays obtained on percussion drill samples received on February 26 and 27, 1985.

Hole Q - 258

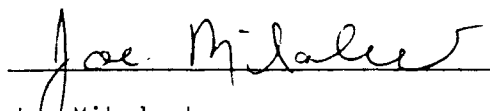
<u>SAMPLE</u>	<u>% CU</u>	<u>SAMPLE</u>	<u>% CU</u>
60-70	.011	180-190	.013
70-80	.016	190-200	.013
80-90	.012	200-210	.012
90-100	.011	210-220	.012
100-110	.011	220-230	.014
110-120	.010	230-240	.015
120-130	.014	240-250	.016
130-140	.012	250-260	.015
140-150	.012	260-270	.017
150-160	.011	270-280	.015
160-170	.012	280-290	.012
170-180	.011	290-300	.012

Hole Q - 259

<u>SAMPLE</u>	<u>% CU</u>	<u>SAMPLE</u>	<u>% CU</u>
140-150	.009	220-230	.008
150-100	.008	230-240	.010
160-170	.008	240-250	.008
170-180	.005	250-260	.007
180-190	.007	260-270	.011
190-200	.007	270-280	.009
200-210	.008	280-290	.005
210-220	.007	290-300	.013

Hole Q - 260

<u>SAMPLE</u>	<u>% CU</u>	<u>SAMPLE</u>	<u>% CU</u>
90-100	.007	200-210	.013
100-110	.010	210-220	.013
110-120	.011	220-230	.013
120-130	.010	230-240	.013
130-140	.013	240-250	.012
140-150	.009	250-260	.012
150-160	.016	260-270	.012
160-170	.016	270-280	.012
170-180	.015	280-290	.012
180-190	.014	290-300	.013
190-200	.012		



Joe Mihalech
Chief Assayer

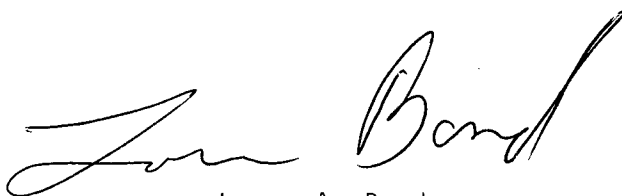
STATEMENT OF COSTS

1. <u>DRILLING</u> -	Tonto Drilling Company	
	Drill costs	\$ 6,960.00
	Stand by hours	180.00
	Materials used	<u>553.56</u>
	Subtotal	\$ 7,693.56
2. <u>SURVEYING</u> -	Establish survey control, pick up holes, tie into Afton mine grid. W. Takashita and D. Birkenhead - 1 day	\$ 293.00
3. <u>ASSAYING</u> -	61 samples - assayed for copper @ \$8.25 per sample	503.25
4. L. A. BOND, Geologist - Plan program Supervise drilling, collect and log samples, report preparation. 10 days @ \$200/day		<u>\$ 2,000.00</u>
	Total Costs	<u><u>\$ 10,489.81</u></u>

STATEMENT OF QUALIFICATIONS

I, Lorne Allan Bond, of the City of Kamloops, British Columbia
do hereby certify that:

1. I am a qualified, practising Geologist.
2. I am a graduate of Loyola College (University of Montreal),
with a B. Sc. (1967) in Geotechnical Sciences.
3. I have practised my profession since 1967 while employed
with Sherrit-Gordon Mines Ltd., Cominco Ltd. and Afton
Operating Corporation.
4. This report describes a percussion drill program performed
under my supervision between February 19 and February 25,
1985.



Lorne A. Bond
Senior Geologist
Afton Operating Corporation
March 6, 1985