

85-1120-14390  
11/86

REPORT ON  
PRELIMINARY GEOCHEMICAL SOIL SAMPLING

VERITAS CLAIM GROUP  
LILLOOET MINING DIVISION  
BRIDGE RIVER AREA, B.C.

Latitude: 50°50.5'N

Longitude: 122°55'W

N.T.S.: 92-J-15 W

**GEOLOGICAL BRANCH  
ASSESSMENT REPORT**

**14,390**

for

Owner:  
Operator:

Coral Energy Corp.  
Suite 100 - 455 Granville St.  
Vancouver, B.C. V6C 1T1

FILMED

by

Vancouver, B.C.  
January 1986

Chris J. Sampson, P.Eng.  
Consulting Geologist

LIST OF CONTENTS

	Page
1. INTRODUCTION	1
2. PROPERTY, LOCATION, ACCESS, TOPOGRAPHY	2
3. PREVIOUS WORK	3
4. GEOCHEMICAL SOIL SAMPLING	3
5. ANALYTICAL PROCEDURES	4

ILLUSTRATIONS

Figure 1	INDEX MAP	Follows Page 1
Figure 2	TOPOGRAPHY MAP	Follows Page 2
Figure 3	CLAIM MAP	Follows Page 2
Figure 4	PRELIMINARY GEOCHEMICAL SOIL SAMPLE LOCATION MAP	In Pocket

## INTRODUCTION

Coral Energy Corp. holds the Veritas Claim Group which is situated in the Bridge River area, Lillooet Mining Division, B.C., approx. 5 kms west of Gold Bridge.

The Veritas Group is underlain by rocks of the Bridge River Group, Pioneer and Hurley formations which have been intruded by Bralorne diorites and which form the host rocks for virtually all the known gold occurrence in the Bridge River camp. On the Ranch claim, a series of adits have explored the Veritas quartz vein which carries gold values. Grab samples collected by the writer in 1985 from the vein and the much pile of the No. 2 adit ran 0.202 oz/ton gold and 0.147 oz/ton gold respectively.

In early May 1985 two 100 metre spaced NS grid lines were flagged across the western part of the Ranch claim and the adjoining areas of the Veritas 6 fraction and Veritas 5 claim. Geochemical soil samples were then collected at 25 metre spacings along the two lines. Samples were analyzed for gold, silver, arsenic, copper, lead and zinc.

In early November 1985 a field crew from Renegade Mineral Exploration Services cut a 1 km NS baseline across the Veritas No. 5 claim and flagged <sup>eleven</sup> 1 km 100 metre spaced EW lines across that claim. The crew then attempted to collect soil samples but due to early heavy snow falls and the presence of thick volcanic ash on the Veritas 5 claim it was decided to leave soil sampling until the 1986 field season.

# CORAL ENERGY CORP.

GOLDBRIDGE AREA  
LILLOOET MINING DIVISION, B.C.

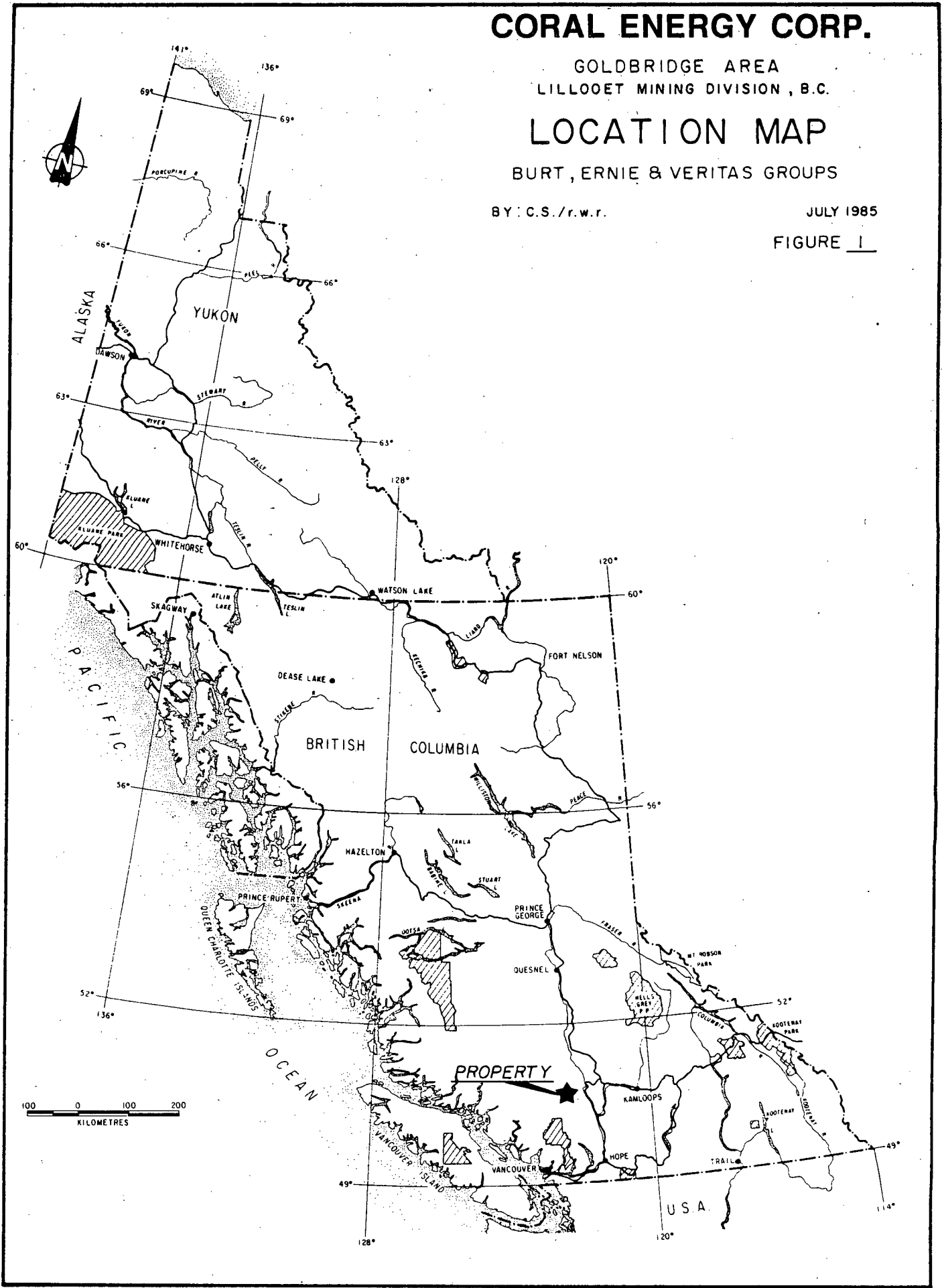
## LOCATION MAP

BURT, ERNIE & VERITAS GROUPS

BY: C.S./r.w.r.

JULY 1985

FIGURE 1



PROPERTY, LOCATION, ACCESS, CLIMATE

The Veritas Group of claims consists of the 12 unit metric claim, Veritas 5, and 8 reverted Crown grants as follows:

<u>Claim Name</u>	<u>Record No.</u>		<u>Expiry Date</u>
Veritas 5 (3Sx4W)	3092	12 units	11 Feb. 1986
Ranch	3081	Lot 2355	1 Jan. 1986
Veritas 2	3082	Lot 2356	1 Jan. 1986
Veritas	3083	Lot 2357	1 Jan. 1986
Veritas 4	3110	Lot 2360	18 Feb. 1986
Veritas 3	2225	Lot 2359	10 Nov. 1985
Eve	2226	Lot 2412	10 Nov. 1985
Veritas Fraction 6	3138		2 May 1986
Eve 2	2227	Lot 2413	Nov.

The claim group is situated between Gun and Downton lakes, 5 kms west of Gold Bridge. Access is easily gained by 2WD vehicle to all the reverted Crown grants and the north east corner of Veritas 5 claim by means of a series of gravel roads which connect with the Gun Lake access road. The claims straddle a low ridge between Gun and Downton lakes. The lowest elevation is at Downton Lake, 750 m (2452 ft). Highest elevation is on ridge top in the centre of the Veritas 5 claim which is 1280 m (4200 ft). Slopes over most of the property are moderate to gentle with the exception of the south west side of the Veritas 5 claim where the ground slopes steeply down to Downton Lake. The easternmost group of the reverted Crown grants (2225, 2226, 2227 and 3110) includes an area of public highways, summer cabins and a hotel (Little Gun Lake Lodge). Surface rights in this area are privately held and work on these reverted Crown grants would need to be planned accordingly.

Since the claim group is situated in the Bridge River district, on the east, i.e. rain shadow side of the Coast Range Mountains, it experiences reasonably long, warm, dry summers and short, crisp winters. Snow cover is only a problem during the months December through April.

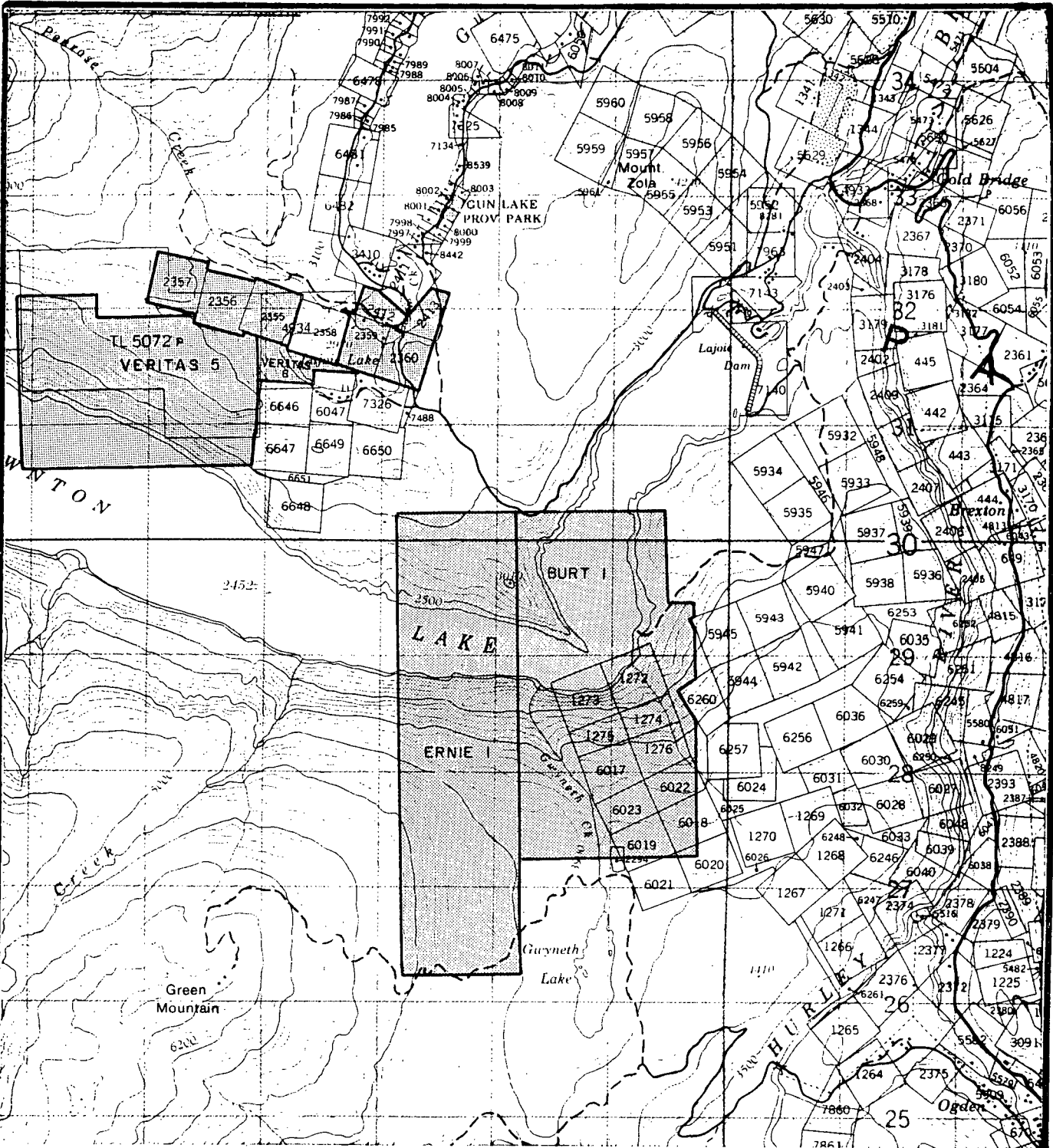


FIGURE 2

**CORAL ENERGY CORP.**

GOLDBRIDGE AREA  
 LILLOOET MINING DIVISION, B.C.  
 TOPOGRAPHIC MAP  
 BURT, ERNIE & VERITAS GROUPS



0 1 2 Km

DATE:  
JULY 1985

SCALE:  
1:50,000

BY:  
C. SAMPSON

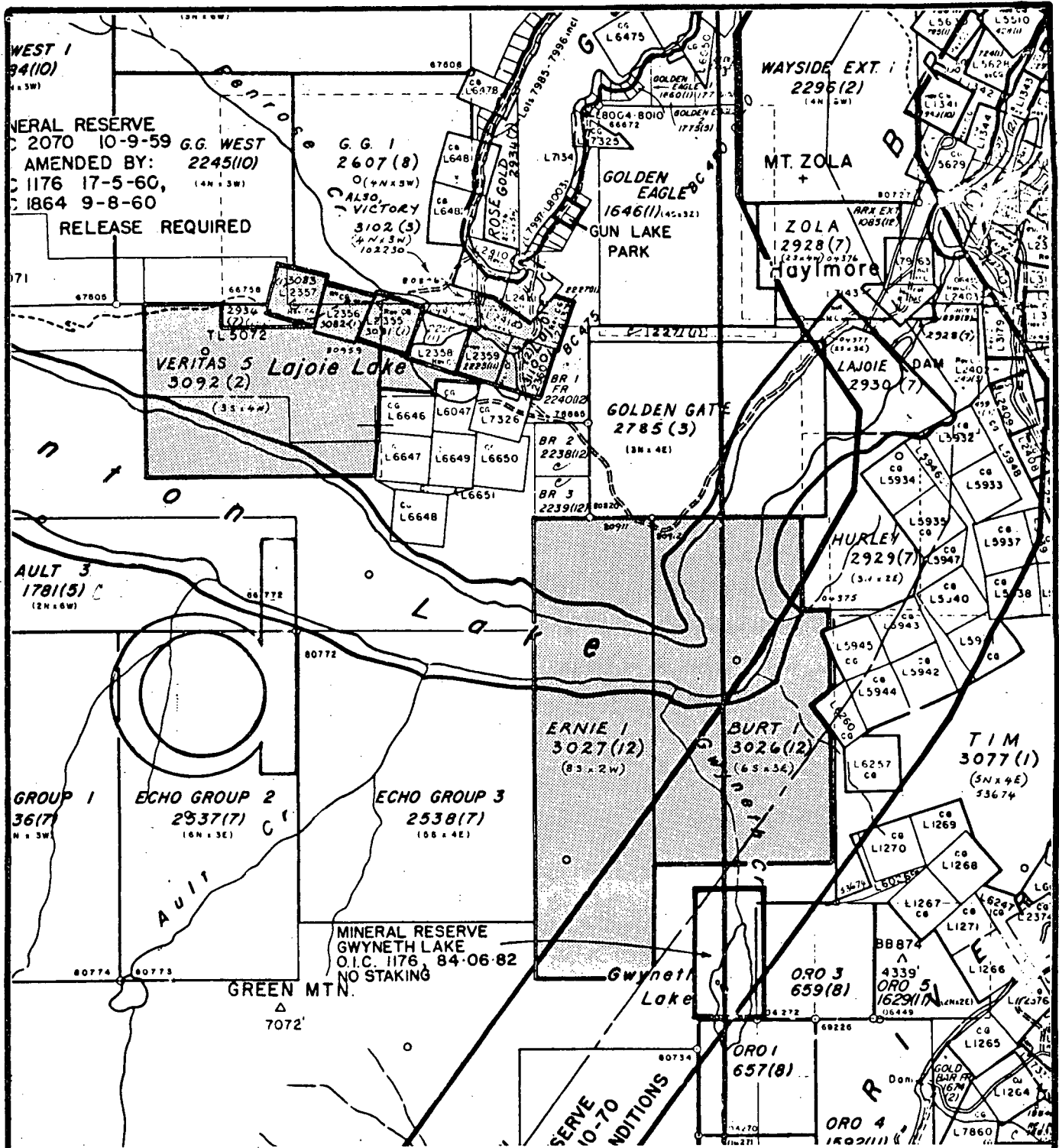


FIGURE 3

# CORAL ENERGY CORP.

GOLDBRIDGE AREA  
LILLOOET MINING DIVISION, B.C.

CLAIM MAP  
BURT, ERNIE & VERITAS GROUPS

DATE:  
JULY 1985

SCALE:  
1:50,000

BY:  
C. SAMPSON



## PREVIOUS WORK

The Bridge River camp has been the most significant lode gold producing district in B.C. Initial discoveries of placer gold were made in 1863 and by the end of the nineteenth century many of the veins which were to become producers in the twenties and thirties had been discovered.

The largest producers in the area were the Pioneer (1.3 m. oz, 1928-1962) and Bralorne (2.8 m. oz, 1932-1971). Smaller producers were the Minto, Wayside and Congress. The initial discovery date of the Veritas vein is not known but by 1922 the workings are described in McCann's GSC Memoir 130 as consisting of a 225 ft tunnel and several open cuts being worked by Matt Forster. By 1937, C.E. Cairnes (Memoir 213) describes 3 adits, the lowest being 550 ft. A 28 ft winze and short raise had also been driven from the #3 adit (the uppermost adit at that time).

A short (20 ft) upper adit (#4) was later driven. The property apparently then lay dormant for several years until in 1978 W. Cook commissioned Kerr, Dawson Assoc. to do geological mapping, sampling and limited geochemical soil and rock chip sampling on the Veritas and Artomas claim groups which covered an area of approx. 3.5 km by 1.5 km on the west side of La Joie Lake and included the present Veritas Group except 2225-2227 and 3138.

## GEOLOGICAL SOIL SAMPLING

Much of Veritas Claim Group is covered by a layer of geologically recent volcanic ash (2,400 years old) which varies from a few centimetres to 50 centrimetres thick. This overlies the well developed A, B and C soil horizons in what are well drained, well developed soils.



The sampling by Garry Polischuk under the supervision of the writer in May 1985 was done using a small shovel to dig down through the volcanic ash and the underlying humic A horizon in order to obtain 100 to 200 grams of sample from B horizon. (This is very readily recognizable due to its high iron content and rich red-brown colour).

Each soil sample (80 total) was placed in a numbered brown Kraft paper sample bag, air dried (drying by heaters is not generally necessary in the Bridge River area) and shipped to Min-En Labs in Vancouver, B.C. for analysis. Sample locations are plotted on Figure 4.

In early November 1985 a crew from Renegade Mineral Exploration Services Ltd. cut a NS one km baseline across the centre of the Veritas 5 claim and flagged <sup>eleven</sup> 100 metre spaced EW cross lines across the property. The crew then commenced soil sampling but encountered great difficulties caused by early heavy snowfall and a thick layer of volcanic ash which covers much of Veritas property. It was decided therefore to leave further geochemical soil sampling until the 1986 field season.

#### ANALYTICAL PROCEDURES

Analytical methods used by Min-En Labs were as follows:

*MIN-EN Laboratories Ltd.*

*Specialists in Mineral Environments*

Corner 15th Street and Bewicke  
705 WEST 15TH STREET  
NORTH VANCOUVER, B.C.  
CANADA V7M 1T2

ANALYTICAL PROCEDURE REPORT FOR ASSESSMENT  
WORK - 26 ELEMENT ICP

Ag, Al, As, B, Bi, Ca, Cd, Co, Cu, Fe, K, Mg, Mn, Mo,  
Na, Ni, P, Pb, Sb, Sr, Th, U, V, Zn

Samples are processed by Min-En Laboratories Ltd., at 705 W. 15th St., North Vancouver Laboratory employing the following procedures.

After drying the samples at 95°C soil and stream sediment samples are screened by 80 mesh sieve to obtain the minus 80 mesh fraction for analysis. The rock samples are crushed by jaw crusher and pulverized by ceramic plated pulverizer.

1.0 gram of the samples are digested for 6 hours with HNO<sub>3</sub> and HClO<sub>4</sub> mixture.

After cooling samples are diluted to standard volume. The solutions are analysed by Computer operated Jarrell Ash 9000ICP. Inductively coupled Plasma Analyser. Reports are formatted by routing computer dotline print out.

*MIN-EN Laboratories Ltd.*

*Specialists in Mineral Environments*

Corner 15th Street and Bewicke  
705 WEST 15TH STREET  
NORTH VANCOUVER, B.C.  
CANADA V7M 1T2

GOLD GEOCHEMICAL ANALYSIS BY MIN-EN  
LABORATORIES LTD.

Geochemical samples for Gold processed by Min-En Laboratories Ltd., at 705 W. 15th St., North Vancouver Laboratory employing the following procedures.

After drying the samples at 95°C soil and stream sediment samples are screened by 80 mesh sieve to obtain the minus 80 mesh fraction for analysis. The rock samples are crushed and pulverized by ceramic plated pulverizer.

A suitable sample weight 5.0 or 10.0 grams are pretreated with  $\text{HNO}_3$  and  $\text{HClO}_4$  mixture.

After pretreatments the samples are digested with Aqua Regia solution, and after digestion the samples are taken up with 25% HCl to suitable volume.

Further oxidation and treatment of at least 75% of the original sample solutions are made suitable for extraction of gold with Methyl Iso-Butyl Ketone.

With a set of suitable standard solution gold is analysed by Atomic Absorption instruments. The obtained detection limit is 0.005 ppm (5ppb).

COMPANY: GARY POUSCHUK  
 PROJECT No: VERITAS  
 ATTENTION: GARY POUSCHUK

MIN-EN LABS ICP REPORT  
 705 WEST 15th ST., NORTH VANCOUVER, B.C. V7M 1T2  
 (604)980-5814 OR (604)988-4524

(ACT:GEO27) PAGE 1 OF 1  
 FILE No: 5-1515  
 DATE: MAY 16, 1985

(VALUES IN PPM )	AG	AS	CU	PB	ZN	AU-PPB
VERITAS 1	.3	134	56	38	54	5
VERITAS 2	.7	663	69	65	35	85
VERITAS 3	.6	357	62	67	28	40
VERITAS 4	9.5	2	1867	294	853	3300
LOOW 00S	<.1	<1	61	<1	106	15
LOOW 01S	<.1	4	50	<1	56	5
LOOW 02S	<.1	<1	44	<1	60	10
LOOW 03S	<.1	<1	37	<1	150	45
LOOW 04S	<.1	<1	95	<1	94	30
LOOW 05S	<.1	<1	36	2	90	<5
LOOW 09S	<.1	<1	46	<1	91	75
LOOW 10S	<.1	21	50	<1	71	5
LOOW 12S	<.1	226	43	<1	103	20
LOOW 13S	.2	<1	21	<1	41	5
LOOW 14S	.5	63	31	29	62	10
LOOW 15S	.3	17	28	14	57	5
LOOW 16S	.4	<1	37	<1	135	5
LOOW 17S	.2	<1	50	<1	111	10
LOOW 18S	.4	<1	36	<1	320	5
LOOW 19S	<.1	<1	45	<1	197	10
LOOW 20S	<.1	<1	38	<1	91	5
LOOW 21S	<.1	<1	32	<1	50	5
LOOW 22S	.3	<1	20	<1	126	15
LOOW 23S	.2	<1	17	<1	77	5
LOOW 24S	.4	<1	17	<1	251	5
LOOW 25S	.3	<1	43	<1	126	5
LOOW 26S	.4	<1	39	<1	149	10
LOOW 27S	.3	<1	45	<1	110	10
LOOW 28S 40M	.2	18	119	25	235	5
LOOW 29S	.6	2	25	15	191	5
LOOW30S	.4	<1	28	3	233	25
LOOW31S	.2	5	55	<1	111	5

COMPANY: GARY POUSCHUK

MIN-EN LABS ICP REPORT

(ACT:6E027) PAGE 1 OF 1

PROJECT No: VERITAS

705 WEST 15th ST., NORTH VANCOUVER, B.C. V7M 1T2

FILE No: 5-1515

ATTENTION: GARY POUSCHUK

(604)980-5814 OR (604)988-4524

\*TYPE SOIL GEOCHEM\*

DATE: MAY 16, 1985

(VALUES IN PPM)	AG	AS	CU	PB	ZN	AU-PPB
LIW+00S	.8	23	17	5	75	5
LIW+01S 20M	.7	55	16	6	113	5
LIW+02S 20M	.2	63	18	8	129	5
LIW+03S 20M	.6	127	25	16	73	5
LIW+04S	.3	70	17	7	92	5
LIW+05S	N/S					
LIW+06S	N/S					
LIW+07S	N/S					
LIW+08S 20M	.8	25	10	5	125	5
LIW+09S 20M	.5	158	18	11	93	5
LIW+10S	N/S					
LIW+11S	N/S					
LIW+12S 20M	.6	60	4	19	44	5
LIW+13S 20M	.2	40	38	4	97	5
LIW+14S 20M	.9	6	160	5	481	5
LIW+15S	.5	106	21	8	709	5
LIW+16S 20M	.5	39	19	5	195	10
LIW+17S 20M	1.0	49	26	13	1059	5
LIW+18S 20M	.4	62	22	10	365	5
LIW+19S 20M	1.3	1	5	2	609	5
LIW+20S 20M	1.0	1	15	2	103	10
LIW+21S	.8	1	3	2	69	5
LIW+22S	1.1	1	7	3	189	5
LIW+23S 20M	.6	16	17	5	94	5
LIW+24S	.5	31	20	7	118	10
LIW+25S 20M	.7	3	16	8	133	5
LIW+26S 20M	.9	1	11	2	198	5
LIW+27S	.9	19	16	7	90	5
LIW+28S	1.1	2	10	6	272	5
LIW+29S 20M	.9	1	15	3	335	5
R1+00S	.5	21	14	2	128	5
R1+01S	.1	28	20	4	35	5
R1+02S	.6	1	12	1	34	5
R1+03S	.4	16	16	4	67	10
R1+04S	.1	21	16	1	18	5
R1+05S	.4	18	14	1	48	5
R1+06S 40M	.6	17	19	5	48	5
R1+07S	.6	7	11	3	47	10
R1+08S 40M	1.0	4	15	6	62	5
R1+09S 40M	.9	14	12	4	60	10
R1+10S	1.1	3	14	4	68	5
R1+11S	.9	5	12	4	59	5
R1+12S	.7	5	14	4	50	5
R1+13S 20M	1.1	6	12	3	48	10
R1+14S 20M	1.1	19	17	4	61	5
R1+15S	.8	2	11	4	31	5
R1+16S	.9	2	18	10	43	5
R1+V1 40M	.8	156	43	47	74	5
R1+V2 20M	.7	134	35	97	126	5

COMPANY: GARY POUSCHUK

MIN-EN LABS ICP REPORT

(ACT:GEO27) PAGE 1 OF 1

PROJECT No: VERITAS

705 WEST 15th ST., NORTH VANCOUVER, B.C. V7M 1T2

FILE No: 5-151

ATTENTION: GARY POUSCHUK

(604)980-5814 OR (604)988-4524

\*TYPE ROCK GEOCHEM\*

DATE: MAY 16, 1985

(VALUES IN PPM )	AG	AS	CU	PB	ZN
VERITAS 5	5.2	114	101	530	562

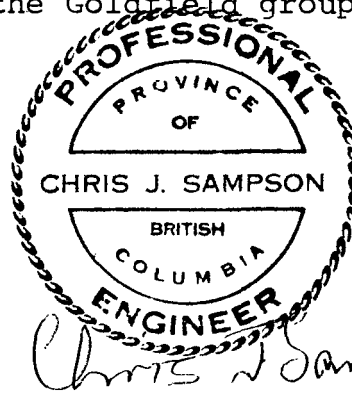
REFERENCES

- 1922 "Geology and Mineral Deposits, Bridge River Map Area" by W.S. McCann, G.S.C. Memoir 130.
- 1932 BCDM Annual Report, pp. 218-219;  
Bulletin No. 3, p. 35.
- 1933 BCDM Annual Report, p. 259.
- 1937 Geological Survey Memoir, 213 "Geology and Mining Deposits on Bridge River Mining Camp, B.C.", C.E. Cairnes.
- 1943 Geological Survey of Canada, Paper 43-15, "Geology and Mineral Deposits of the Tyaughton Lake Map Area, B.C.", C.E. Cairnes.
- 1973 Paper 73-17 Geological Survey of Canada, "Pemberton East-Half Map Area", J.A. Roddick and W.W. Hutchinson.
- 1978 BCDM G.E.M. p. E177 (Veritas-Artomas Property);  
BCDM Assessment Report 6971.

CERTIFICATE

I, Christopher J. Sampson, of 2696 West 11th Avenue, Vancouver, B.C. V6K 2L6, hereby certify that:

1. I am a graduate (1966) of the Royal School of Mines, London University, England with a Bachelor of Science degree (Honours) in Economic Geology.
2. I have practised my profession of mining exploration for the past 20 years in Canada, Europe, United States and Central America. For the past 10 years I have been based in British Columbia.
3. I am a consulting geologist. I am a registered member in good standing of the Association of Professional Engineers of British Columbia.
4. I have written reports in 1983, 1984 and 1985 on work on various properties in the Bridge River Area (Golden Sidewalk, Alpha, Goldbelt, Oro, Tyax, Tunnel, Patlo, Lick, Goldhill, Gold Coin, LJ, Veritas, Ernie and Burt).
5. The present report is based on knowledge gained from visits to the property in May - July 1985, study of published reports and supervision of work programmes on the property in May, November 1985.
6. I have not received, nor do I expect to receive, any interest, direct or indirect, in the properties or securities of Coral Energy Corp. or in those of its associated companies.
7. Coral Energy and its affiliates are hereby authorized to use this report in, or in conjunction with, any prospectus or statement of material facts.
8. I have no interest in any other property or company holding property within 10 kilometres of the Goldfield group of claims.



Vancouver, B.C.  
January 1986

Christopher J. Sampson, P.Eng.  
Consulting Geologist



STATEMENT OF EXPENDITURES1. Labour

Two Samplers, 3,4,5 May @ \$125/day	750.00
Field supervision, 2 days @ \$125/day	250.00

2. Transportation

Truck Rental, 3 days @ \$30/day	90.00
Fuel (Lillooet-Goldbridge return each day)	137.65

3. Supplies

Bags, chain saw rental, etc.	110.00
------------------------------	--------

4. Analyses

80 samples @ \$10.25 each (Au, Ag, Pb, Zn, Cu, As)	820.00
--	--------

5. Contractors

14 kms of grid, Veritas 5 claim @ \$150/km	2,100.00
--	----------

6. Report Preparation

1 day	125.00
-------	--------

---

4,382.65

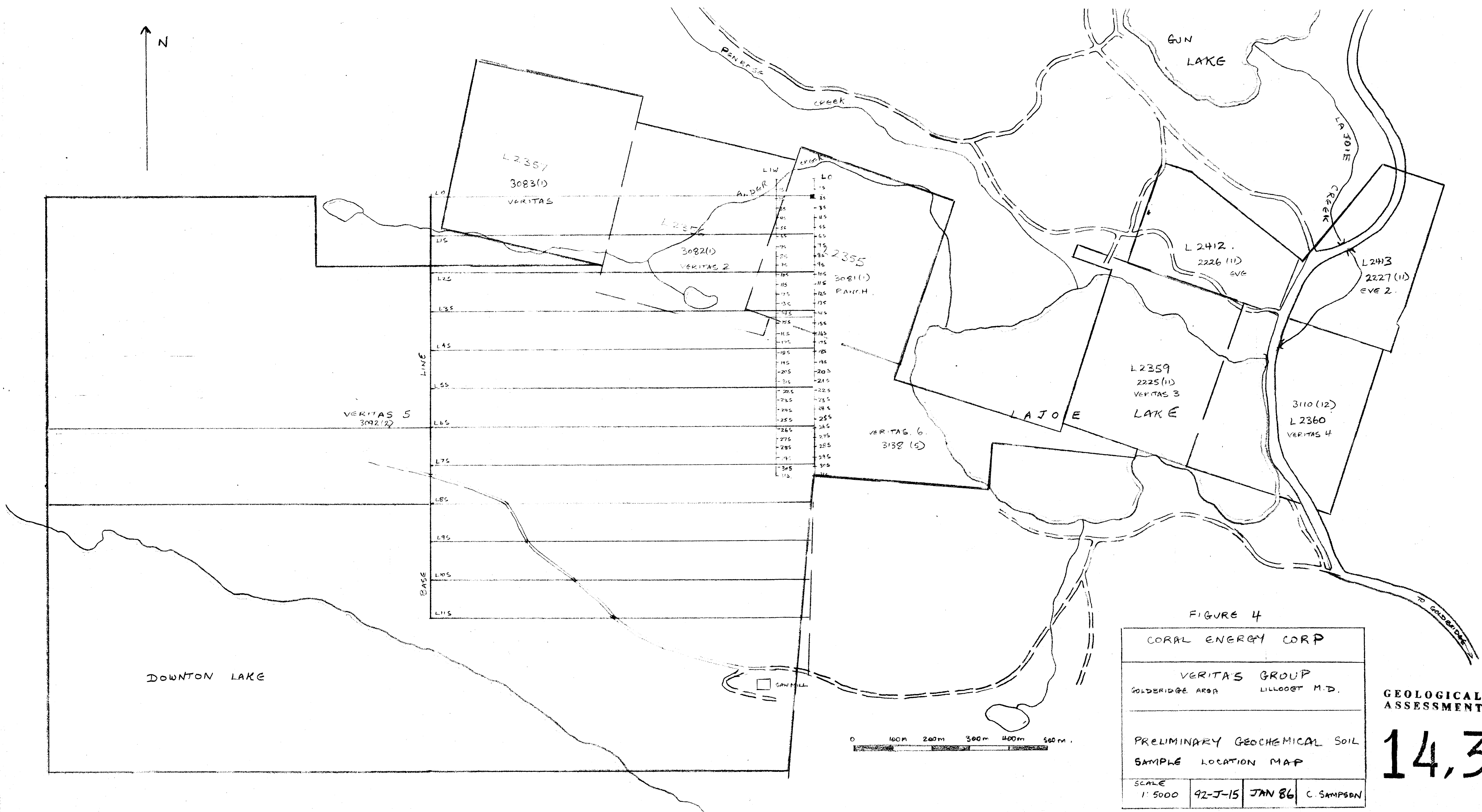


FIGURE 4

CORAL ENERGY CORP			
VERITAS GROUP		LILLOOET M.D.	
GOLDERIDGE AREA			
PRELIMINARY GEOCHEMICAL SOIL			
SAMPLE LOCATION MAP			
SCALE	92-J-15	JAN 86	C. SAMPSON
1:5000			

GEOLOGICAL BRANCH  
ASSESSMENT REPORT

14,390