

85-605

14563

1985 ASSESSMENT REPORT
ON (DEY) MINERAL CLAIMS RECORD # 2482 - 87
NEW WESTMINSTER MINING DIVISION, BRITISH COLUMBIA.

LAT. 49 21
LONG. 121 32

N.T.S.
92 H / 5E

REPORT BY
BURNABY, B.C.

MERVIN BOE
SEPTEMBER 23 / 1985

07/86

FILMED

GEOLOGICAL BRANCH
ASSESSMENT REPORT

14,563

07/86

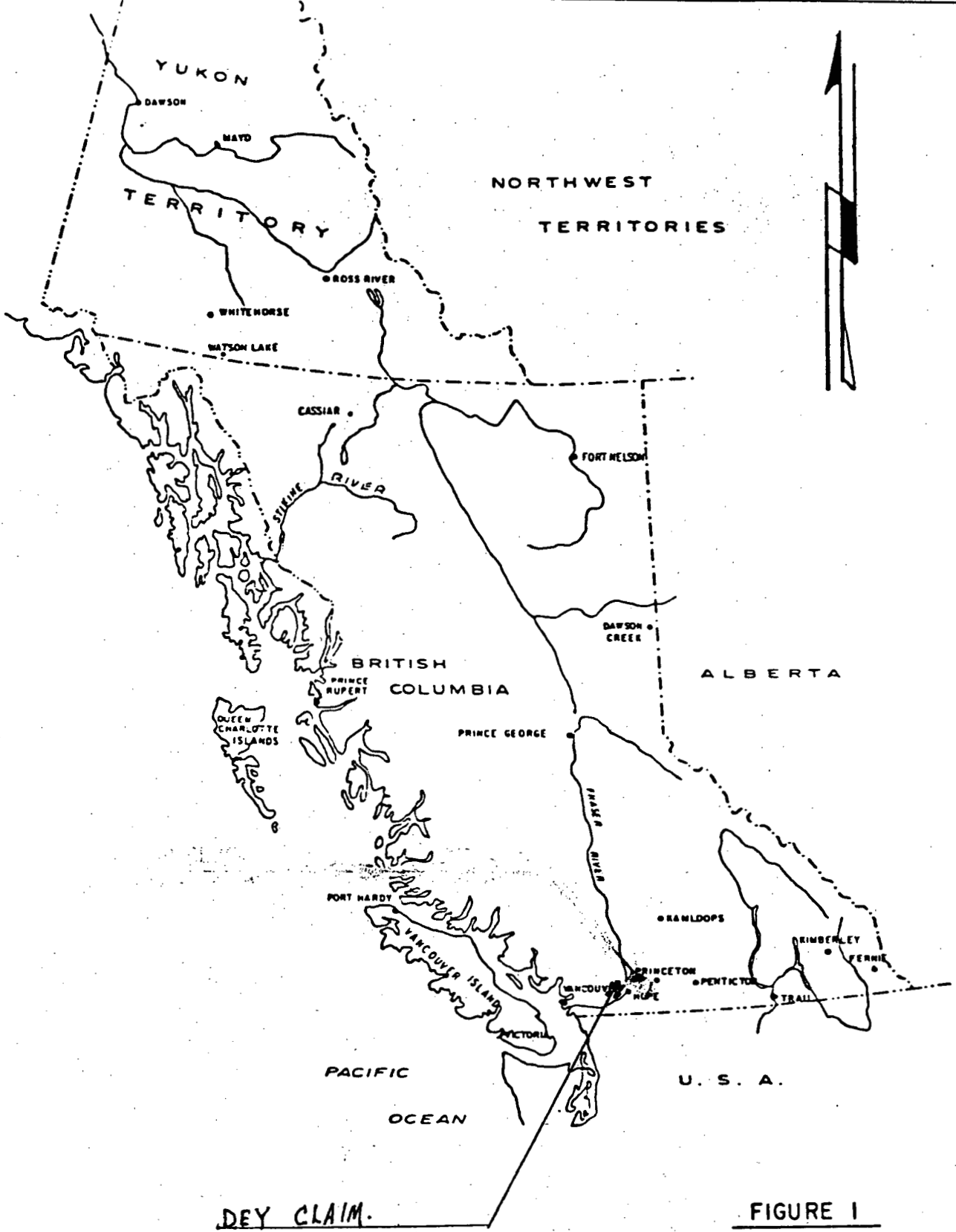
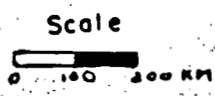


FIGURE 1
PROPERTY
LOCATION



1
LOCATION AND ACCESS

THE DEY MINERAL CLAIMS (6 UNITS) RECORD # 2482-87, ARE LOCATED ABOVE AND IN BETWEEN THE UPPER MOST PART OF THE S.W. BRANCH & N.W. BRANCH OF AMERICAN CREEK.

ACCESS

FROM THE TRANS-CANADA HIGHWAY, JUST AFTER PASSING LAKE ON WEST SIDE OF HIGHWAY, NORTH OF HOPE, APPROXIMATELY TWO MILES NORTH OF HOPE B.C. TURN LEFT, WESTERLY FOLLOW OLD LOGGING ROAD, MAINTAINED IN PASSIBLE CONDITION BY B.C. HYDRO.

PROCEED APP. 10 KILOMETERS TO A LEFT & RIGHT ROAD, TAKE LEFT ROAD AND AT SECOND BRANCH, STAY RIGHT AT WHICH TIME YOU ARE APPROACHING THE DEY CLAIM.

	<u>Record #</u>	<u>Record Date</u>
DEY 1-6	2482-2487	Aug.

NI	NI	NI	NI	NI
200	201	202	203	204
NI	NI	NI	NI	NI
101	102	103	104	105
NI	NI	NI	NI	NI
106	107	108	109	110
NI	NI	NI	NI	NI
111	112	113	114	115
NI	NI	NI	NI	NI
116	117	118	119	120
NI	NI	NI	NI	NI
121	122	123	124	125

MT. BAIRD

EMORY

LOCATION SKETCH IS NOT ACCEPTABLE
 CLAIM MARKED "YES"
 CLAIM DETACH & DESCRIPTION AGREE
 CLAIM BOUNDARIES LABELLED
 CLAIM NUMBER INDICATED
 CLAIM NUMBER SHOWN
 CLAIM QUALITY ACCEPTABLE
 CLAIMS & INITIALS

YES NO
 YES NO
 YES NO
 YES NO
 YES NO

UP 11/84

DEY 1-6

(DEY 1-4 → TAG # 514870M - 514873M
 DEY 5-6 → TAG # 525675M - 525676M

RESERVED MINERAL & PLACER
1/4 MILE EITHER SIDE
O/C 1652 10-5-74
SUBJECT TO CONDITIONS

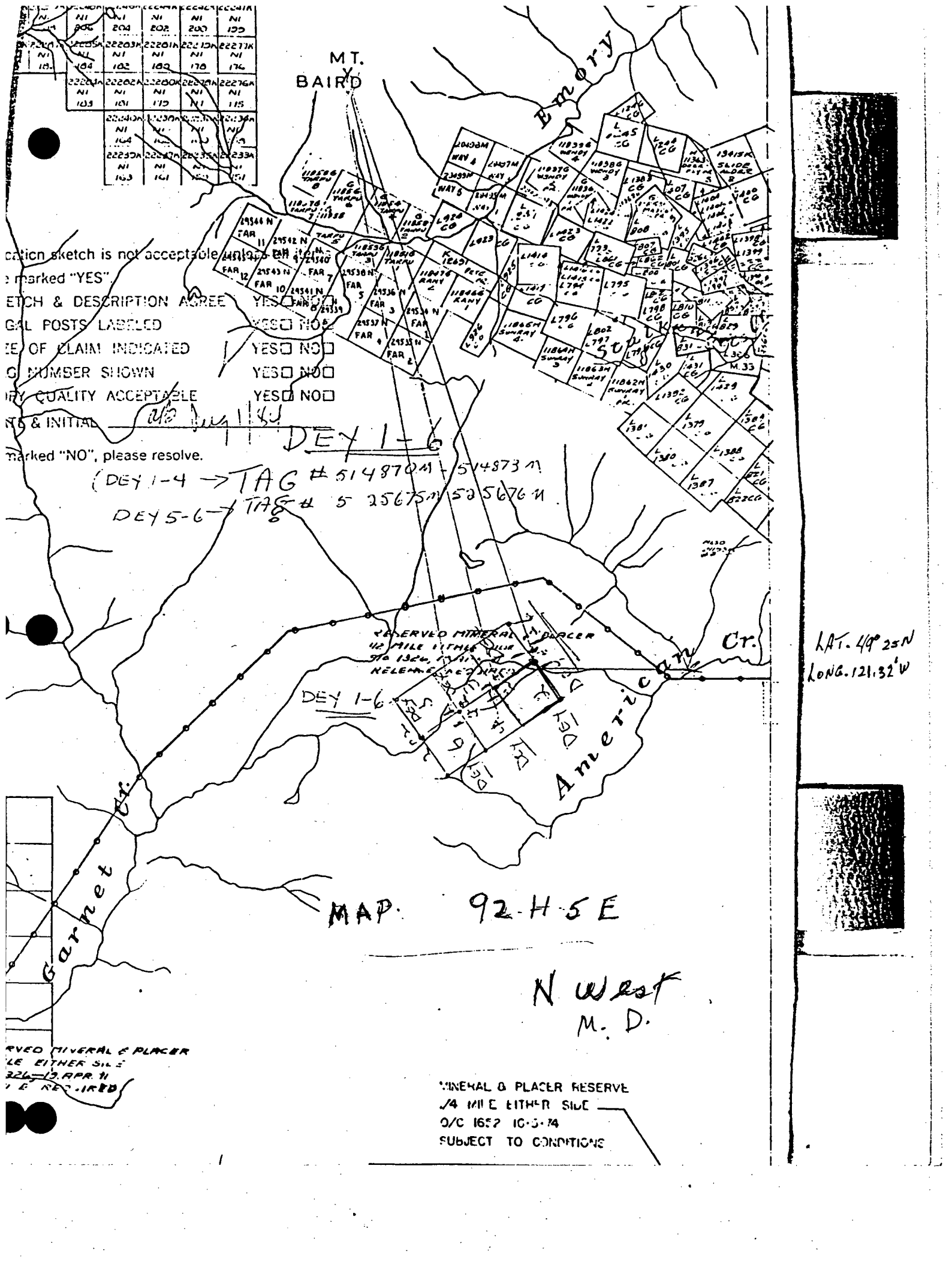
LAT. 49° 25' N
LONG. 121° 32' W

MAP. 92-H-5E

N West
M. D.

MINERAL & PLACER RESERVE
 1/4 MILE EITHER SIDE
 O/C 1652 10-5-74
 SUBJECT TO CONDITIONS

RESERVED MINERAL & PLACER
1/4 MILE EITHER SIDE
O/C 1652 10-5-74
SUBJECT TO CONDITIONS



HISTORY

IT IS PART OF THE MOUNTAIN RANGE BETWEEN YALE AND HARRISSON LAKE THAT HAS BEEN PROSPECTED, STAKED AT VARIOUSE TIMES SINCE TURN OF THE CENTURY. THERE ARE MANY PROPERTIES STILL HELD IN THIS GENERAL AREA FOR THEIR MINERAL VALUE THE ADJOINING PROPERTY TO THE NORTH-EAST, B.C. NICKEL MINES, WHICH HAS PROVEN ITS VALUE.. SEE REFERENCES.

REGIONAL GEOLOGY AND MINERALIZATION

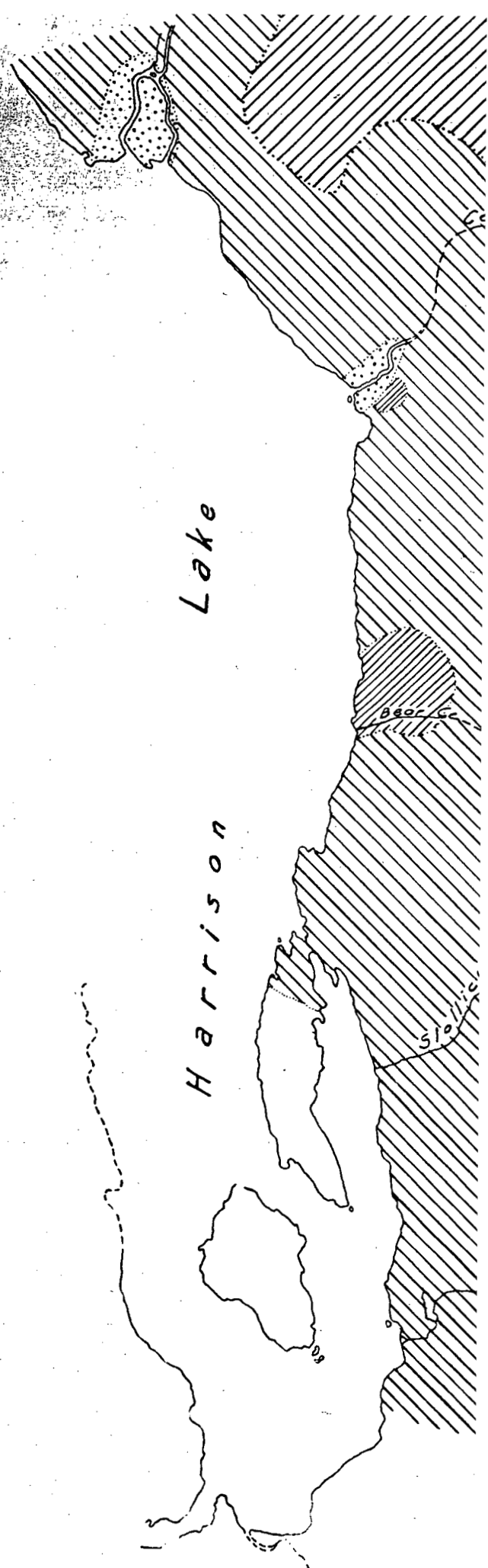
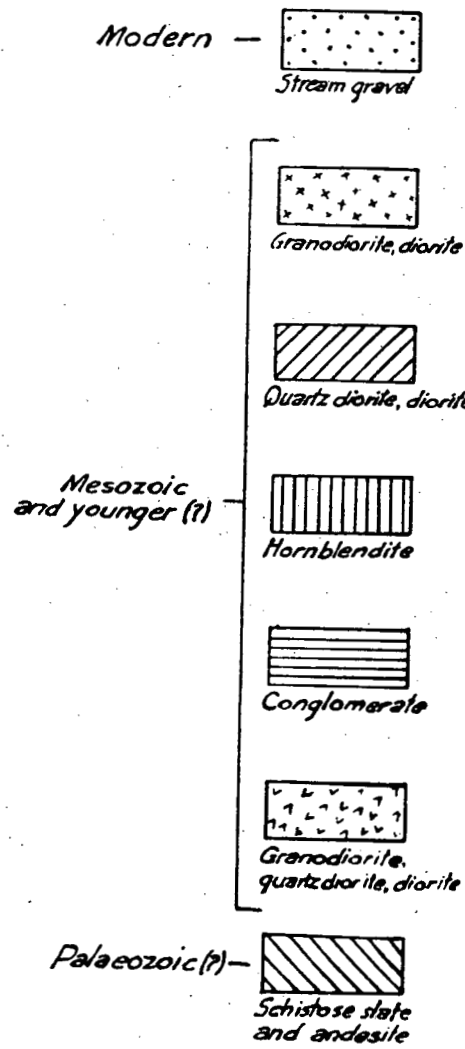
GEOLOGY:

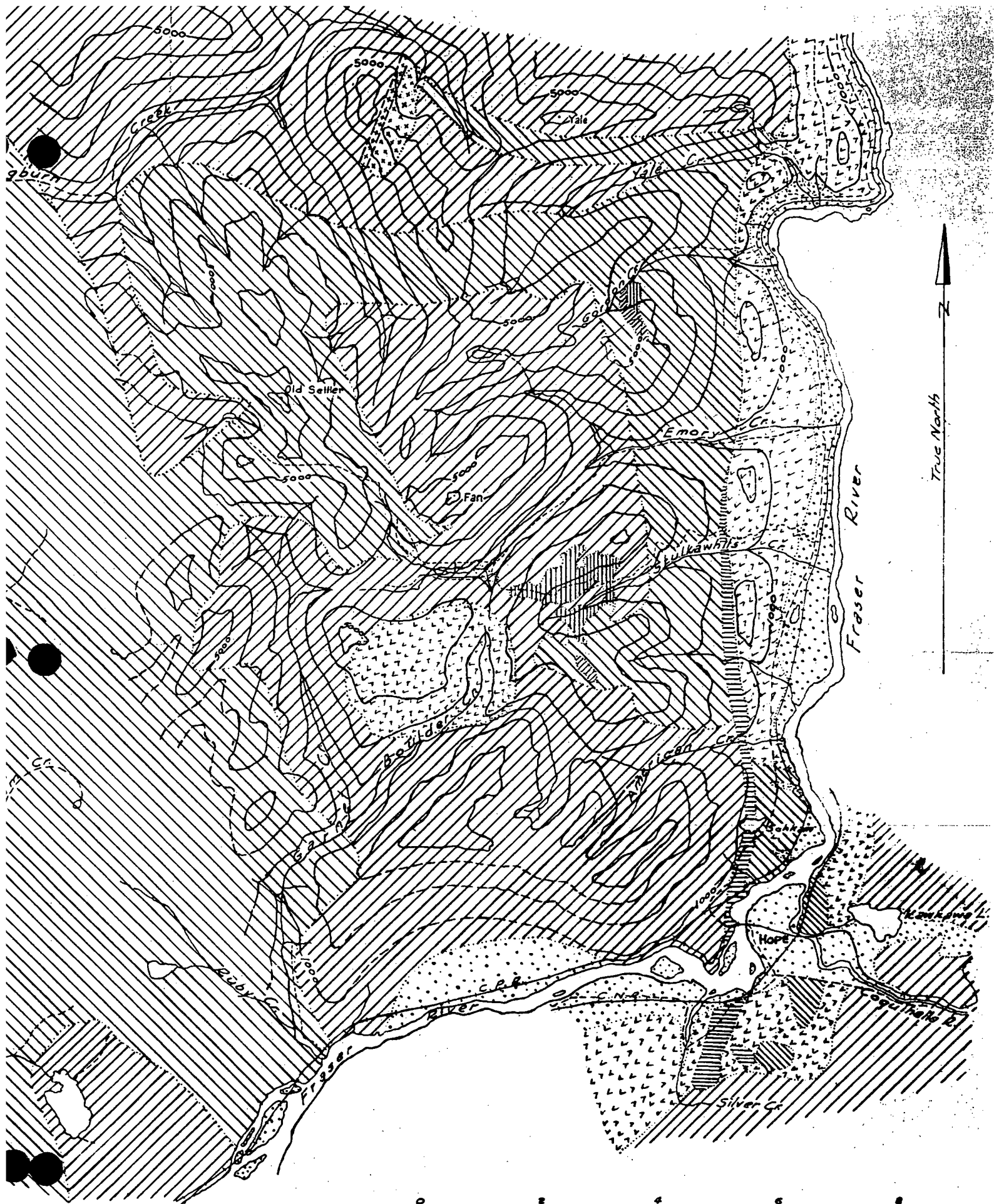
THE ROCKS IN THIS GENERAL VICINITY CAN BE DIVIDED INTO SIX GROUPS STARTING WITH THE OLDEST. (1) LATE PALAEOZOIC SCHISTS, (2) DIORITE, GRANO-DIORITE, AND GRANITE OF EARLY MESOZOIC AGE, (3) CRETACEOUS CONGLOMERATE (4) HORNBLANDITE OF LATE MESOZOIC AGE. (5) DIORITE AND QUARTZ DIORITE OF LATE MESOZOIC AGE. (6) RECENT FRASER RIVER GRAVELS.

MINERALIZATION:

MAGNETITE, CHROMITE, OLIVINE, HYPERSTHENE, AUGITE, HORNBLAND LABRADORITE AND SULPHIDES.

MINERALS OF VALUE DERIVED FROM THIS AREA ARE, COPPER, NICKEL, IRON, COBALT, CHROMIUM, SULPHUR, SILVER, GOLD, PLATINUM, PALADIUM.





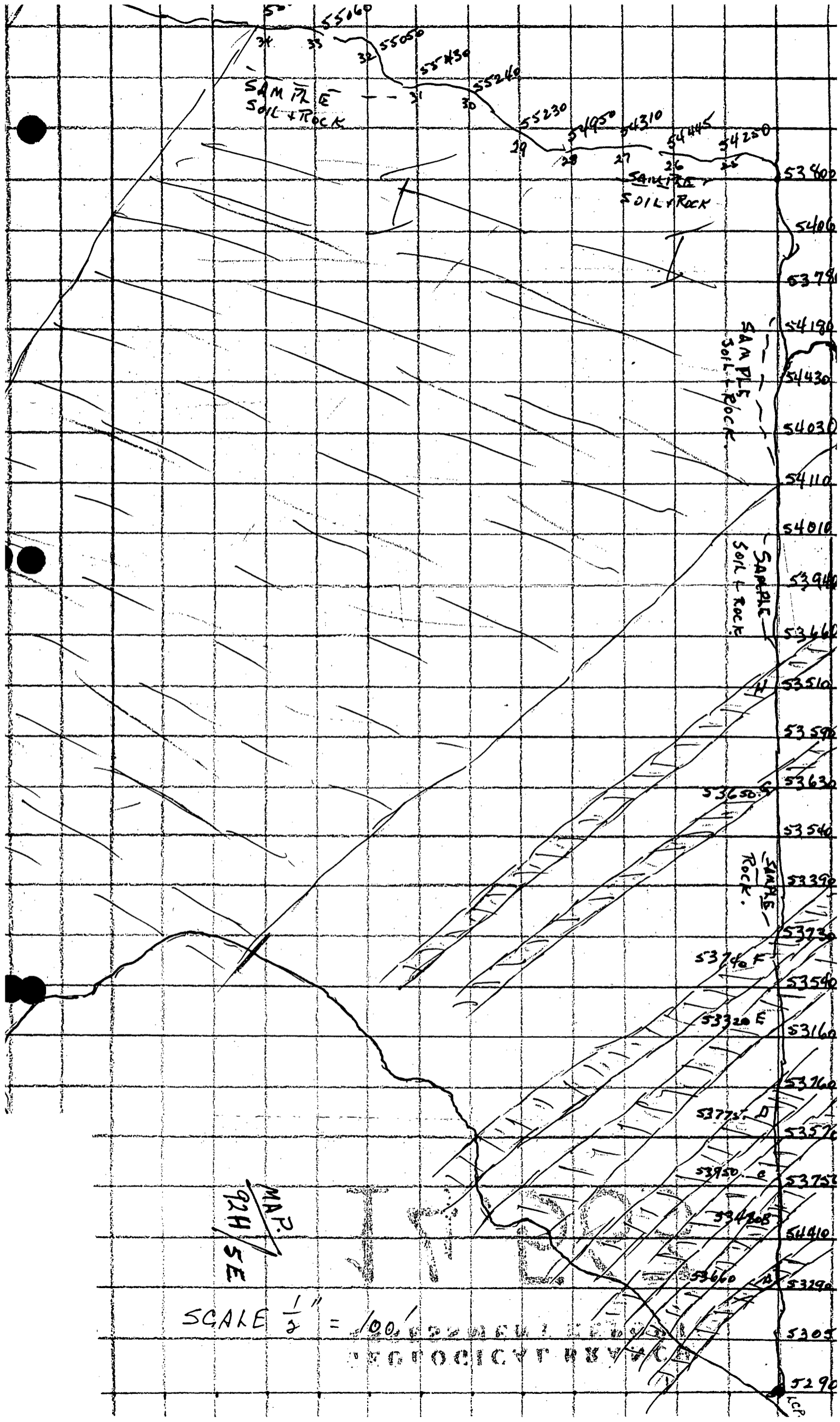
0 2 4 6
Scale of Miles

WORK PERFORMED
COMBINATION, DOWSING AND MAGNETOMETER.

THIS IS PROBABLY THE FIRST WORK DONE BY THIS METHOD, WHEREBY DOWSING AND MAGNETOMETER READINGS WERE LOGGED AND MAPPED IN PLACE, USING HIPCHAIN FOR ACURATE LOCATION.

THIS TEST WAS DONE FOR GOLD ONLY. THAT IS GOLD INDUCTION TO THE INSTRUMENT. THE PERSON DOWSING LEAD THE WAY AND THE PERSON WITH HIPCHAIN AND MAGNETOMETER FOLLOWED, TAKING MAG. READINGS EVERY 100 FEET PLUS SHOW NOSHOW AREAS AS INDICATED BY DOWSER, ALL INFORMATION LOGGED AND MAPPED AS INCLUDED AND SHOWN ON ACCOMPANYING MAP.

THE MAGNETOMETER USED WAS BY SABRE ELECTRONICS



MAP. 92H/SE
 SCALE $\frac{1}{2}'' = 100'$

U.S. GEOLOGICAL SURVEY
 WASHINGTON, D.C.

**GEOLOGICAL BRANCH
ASSESSMENT REPORT**

14,563

B

●

●

REFERENCES

- 1,
FROM GEOLOGICAL SURVEY OF CANADA, PAPER 36-4
SOUTH PART OF FRASER RIVER - HARRISON LAKE REGION, B.C.
REPORT AND MAP BY H.C. HORWOOD.
- 2,
CANADA DEPARTMENT OF MINES. BUREAU OF ECONOMIC GEOLOGY (MEMIOR 190)
GEOLOGY AND MINERAL DEPOSITS AT THE MINE OF B.C. NICKEL MINES, LIMITED.
YALE DISTRICT, B.C.

CERTIFICATE

THOUGH I DONT HOLD A CERTIFICATE OF A GEOLOGIST, I HAVE A CERTIFICATE ISSUED AT END OF THE OF PROSPECTOR TRAINING RECIEVED IN 1978, PROVIDED BY THE DEPT. OF ENERGY & MINES OF B.C. ALONG WITH THE FOLLOWING YEARS OF PRACTICAL EXPERIENCE TO DATE SHOULD BE GIVEN REASONABLE CONSIDERATION.

YOURS TRULY

Mervin Boe.

MERVIN BOE