

85-399-14691

PROSPECTING OF THE LEECH CLAIMS

VICTORIA MINING DIVISION

MAP #92B/12W

LATITUDE 48° 30'

LONGITUDE 123° 45'

FILMED

**GEOLOGICAL BRANCH
ASSESSMENT REPORT**

14,691

April 10, 1985

Elmo K. JOHNSON
2615 Otter Point Road
Sooke, B.C. V0S 1N0
Tel: 642-6132

TABLE OF CONTENTS

Page No.

1	Location
2	Location Map
3	Claims Map
4	Prospecting
5	Traverse Map
6	History
7	Geology and Mineralization
9	Itemized Cost Statement
10	Qualification
11	Assay Report
12	Selected References

LOCATION:

The Leech 1, 2, 3, AU 2 + 3, West 1,2,3, are located approximately 32 km from Sooke, B.C.

Access by Otter Point Road to Pacific Logging Road on to the North Main Road to East Jordan Main Road also by Branch 90N off North Main.

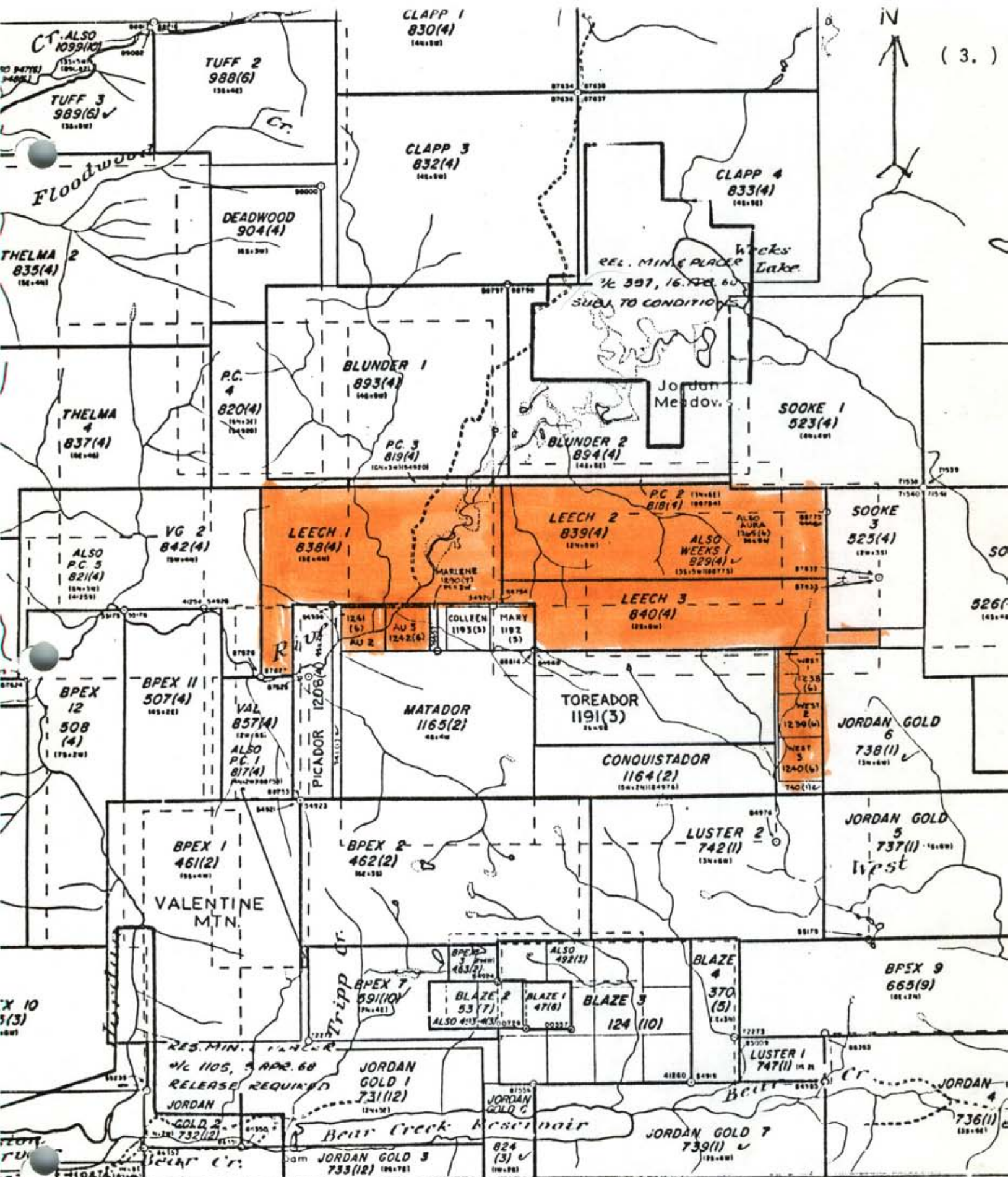
These claims can be reached from Shawnigan Lake/Port Renfrew Road, turn off onto Weeks Lake Road and onto East Jordan Main.

These roads are restricted due to logging in the area.

These claims are partially covered by timber, and are now in the process of being logged.



[REDACTED] - LOCATION - Leech, Au and West Claims



(3.)

CLAIM MAP

Province of British Columbia
Ministry of Energy, Mines and Petrol. Resources



M92B/12W

NORTH 125(10)
SOUTH 127(10)

CG
Rev. CA

Prospecting

The prospecting was all done on the Leech 2, 3 and soil and rock samples were all collected there (8 km of line surveyed). (10/7)

The East end rock samples 001 to 006 were collected on 90N Road and are flagged.

Rock samples R101 and R209 were collected west end of Jordan Main East to the east end of Leech 2 claim and are flagged. Rock samples consist from quartz stringers from the intrusive rocks.

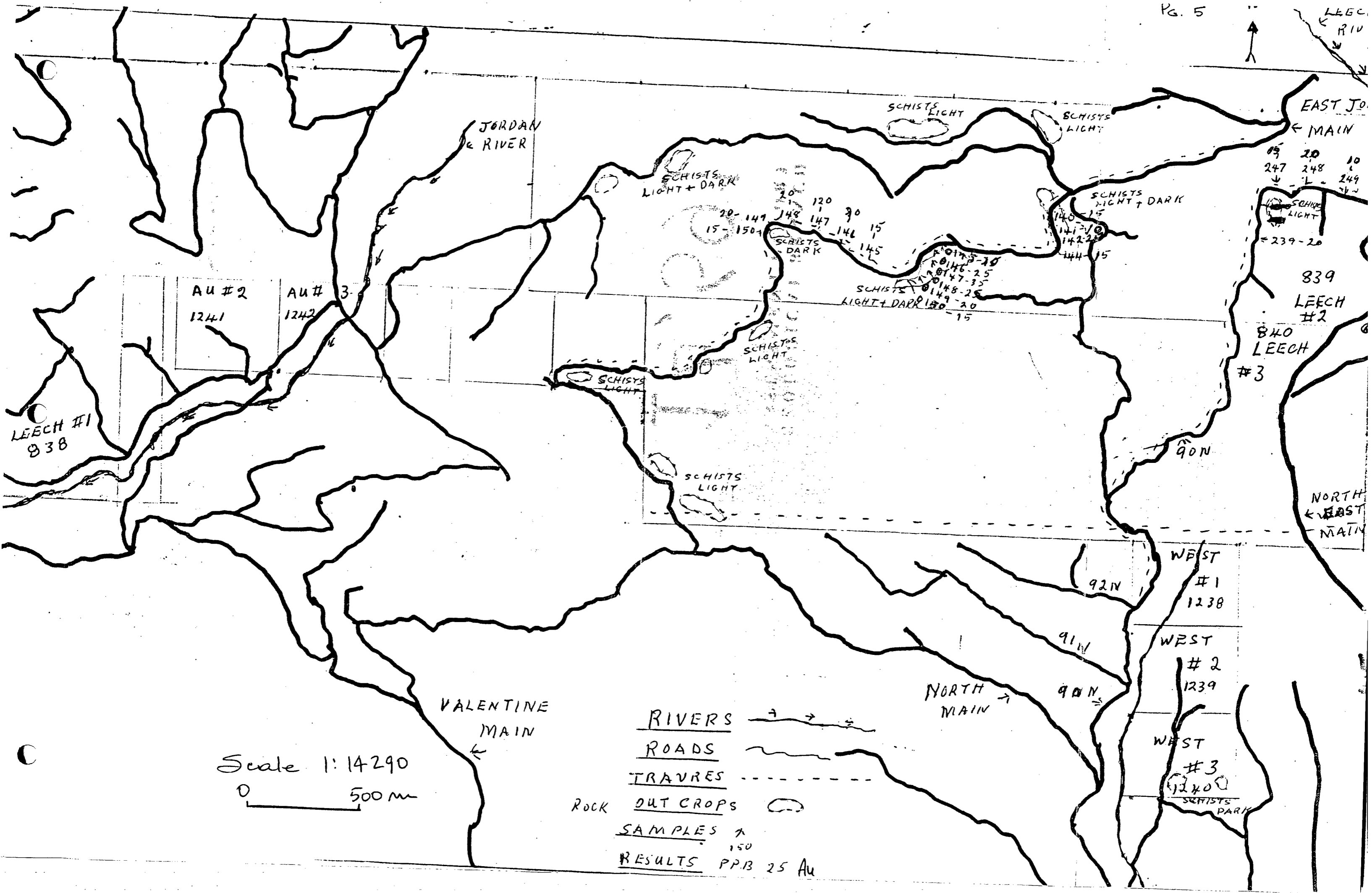
The country rock consists mainly of schists, with numerous quartz stringers.

Soil samples were taken on the south line of Leech 3 and are numbered S101 to S125.

All stations have been flagged and numbered. Soil samples taken on 90N spur are numbered and flagged S200 to S250.

Soil samples taken on East Jordan Main have been numbered and flagged S126 - S150.

We will be having assays made of a number of these samples at a later date.



Scale 1:14290



- RIVERS
- ROADS
- TRAVERSES
- ROCK OUT CROPS
- SAMPLES
- RESULTS PPB 25 Au

AU #2
1241

AU #3
1242

WEST #1
1238

WEST #2
1239

WEST #3
1240

839
LEECH #2
840
LEECH #3

20 10
247 248 249
L

239-20

NORTH
EAST
MAIN

JORDAN
RIVER

SCHISTS
LIGHT

SCHISTS
LIGHT

SCHISTS
LIGHT + DARK

SCHISTS
LIGHT + DARK

SCHISTS
DARK

SCHISTS
LIGHT + DARK

SCHISTS
LIGHT

SCHISTS
LIGHT

SCHISTS
LIGHT

90N

92N

91N

90N

VALENTINE
MAIN

NORTH
MAIN

EAST JO.
MAIN

LEECH
RIVER

**GEOLOGICAL BRANCH
ASSESSMENT REPORT**

14,591

History

Placer gold was discovered at Leech River, 25 km northwest of Victoria in 1864. An estimated \$100,00. - \$200,000. in gold has been recovered from the area to date, much of it in the first two years following the original discovery.

Gold in quartz veins was discovered on the south slope of Valentine Mountain, 15km west of Leechtown, in 1976. Continued exploration by BeauPre Explorations Ltd. turned up museum quality free gold in narrow quartz viens and caused the staking of a great number of claims in the general area in 1982 and 1983.

Geology and Mineralization

The LEECH 1-3, AU 2,3 and WEST 1-3 mineral claims are situated on an upland surface of relatively gentle topography on the drainage divide between Leech and Jordan Rivers. Elevations within the claims area range from 600 to 850 metres above sea level. Much of the area has been logged.

Regional Geological Setting

Vancouver Island, the main component of the Insular tectonic belt, is underlain principally by Paleozoic and Mesozoic volcanic-plutonic complexes which in turn are overlain by clastic sedimentary rocks of similar ages.

The main geological components of the south end of Vancouver Island include Paleozoic or older gneiss complexes in the Victoria area and Mesozoic and Tertiary volcanic sequences between Sooke and Cowichan Lake.

The Leech River Formation, believed to be of late Jurassic age (Muller, 1980), is contained in an easterly trending belt up to 12 km wide between two major east to southeast trending fault zones. The north bounding fault separates Leech River Formation metasediments from Jurassic volcanic rocks while the Leech River Fault marks the boundary with the Tertiary Metchosin volcanics on the south.

The Leech River Formation is comprised of thin bedded greywackes, argillites, slates and phyllites which are variably metamorphosed to quartz-biotite schists. Intercalated volcanic rocks are represented by amphibolites (Grove, 1984). A sill-like Tertiary quartz diorite intrudes Leech River rocks south of Valentine Mountain (Muller, 1980).

Leech River Formation metasediments and lesser amphibolites in the Valentine Mountain area occupy easterly trending, east plunging open folds. Gold-bearing quartz veins near the summit and on the south slope of the mountain are oblique (N70°E) to foliation and occur principally within a 200 by 3000 metre area (Grove,1982,1984). Most veins are narrow -10 cm, but can be traced on strike over tens of metres.

Spectacular quantities of free gold in quartz occurs locally across widths of less than 20 cm and assays of up to 34.950 oz/ton have been reported (Grove,1984). Diamond drilling has indicated gold-bearing quartz veins to depths of at least 90 metres and over a strike length of 60 metres. Best result obtained was 7.550 oz/ton over 0.5 metre.

Arsenopyrite and marcasite are the main sulfide minerals in quartz veins which are hosted by thinly laminated metasediments between footwall and hangingwall amphibolite bands.

ITEMIZED COST STATEMENTPROSPECTING AND SAMPLINGMarch 29/85 to April 8/85

41 man days @ \$ 100. per day	\$ 4,100.00
Truck & Camper @ \$ 40. per day]	
Truck 4 X 4 @ \$ 40. per day]	880.00
Fuel	150.00
41 man days Food	820.00
Ribbon	8.00
Sample Bags	13.75
Report preparation	150.00
	<hr/>
	\$ 6,121.75
	<hr/> <hr/>

QUALIFICATION:

I, Elmo K. Johnson and partner C.R. Elitton took the prospecting course. It was conducted by Fraser Shepherd of the Mines Department of Victoria.

It was held at Camosun College in Victoria, B.C. starting February 17, 1976.

I also took a prospecting course in Prince Albert, Sask. about 1950.

I have done some prospecting every year since that time, both in placer and hard rock.

Elmo K. Johnson
Elmo K. Johnson

SELECTED REFERENCES

Carter, N.C. Diamond Drilling Report on the LEECH 103, AU 2,3 and WEST 1-3 Mineral Claims. (Consulting Geologist) 1986.

Geological Report and Work Proposal on the Valentine Mountain Property for BeauPre Explorations Ltd. B.C. Ministry of Energy Mines and Petroleum Resources Assessment Report 12642, (1984).

Grove, E.W. BLAZE and BPEX Claims. Victoria Mining Division, B.C. Ministry of Energy Mines and Petroleum Resources Assessment Report 10110, (1982).

Muller, J.E. Geology - Victoria, British Columbia. Geological Survey of Canada Map 1553A, (1980).