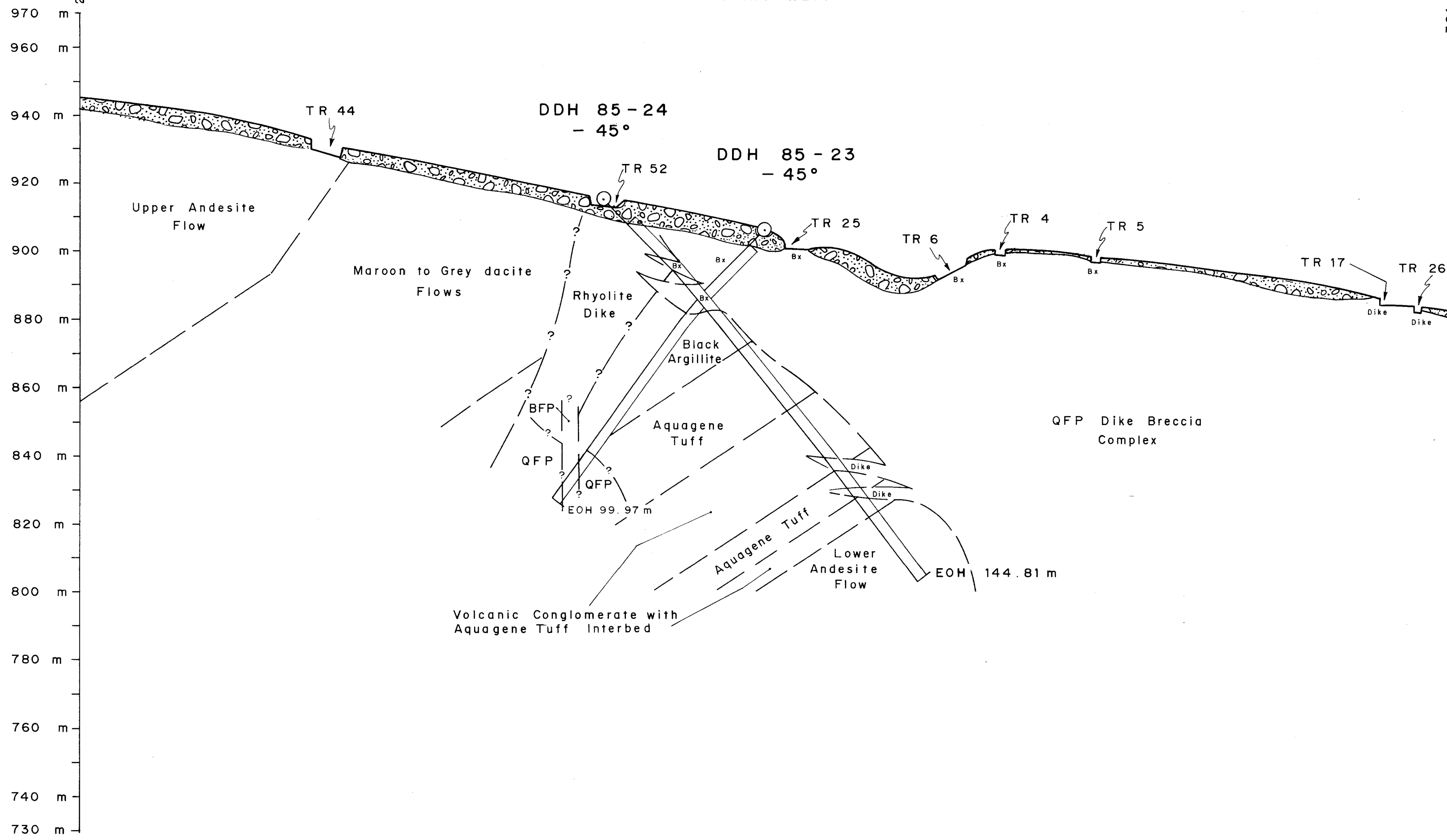
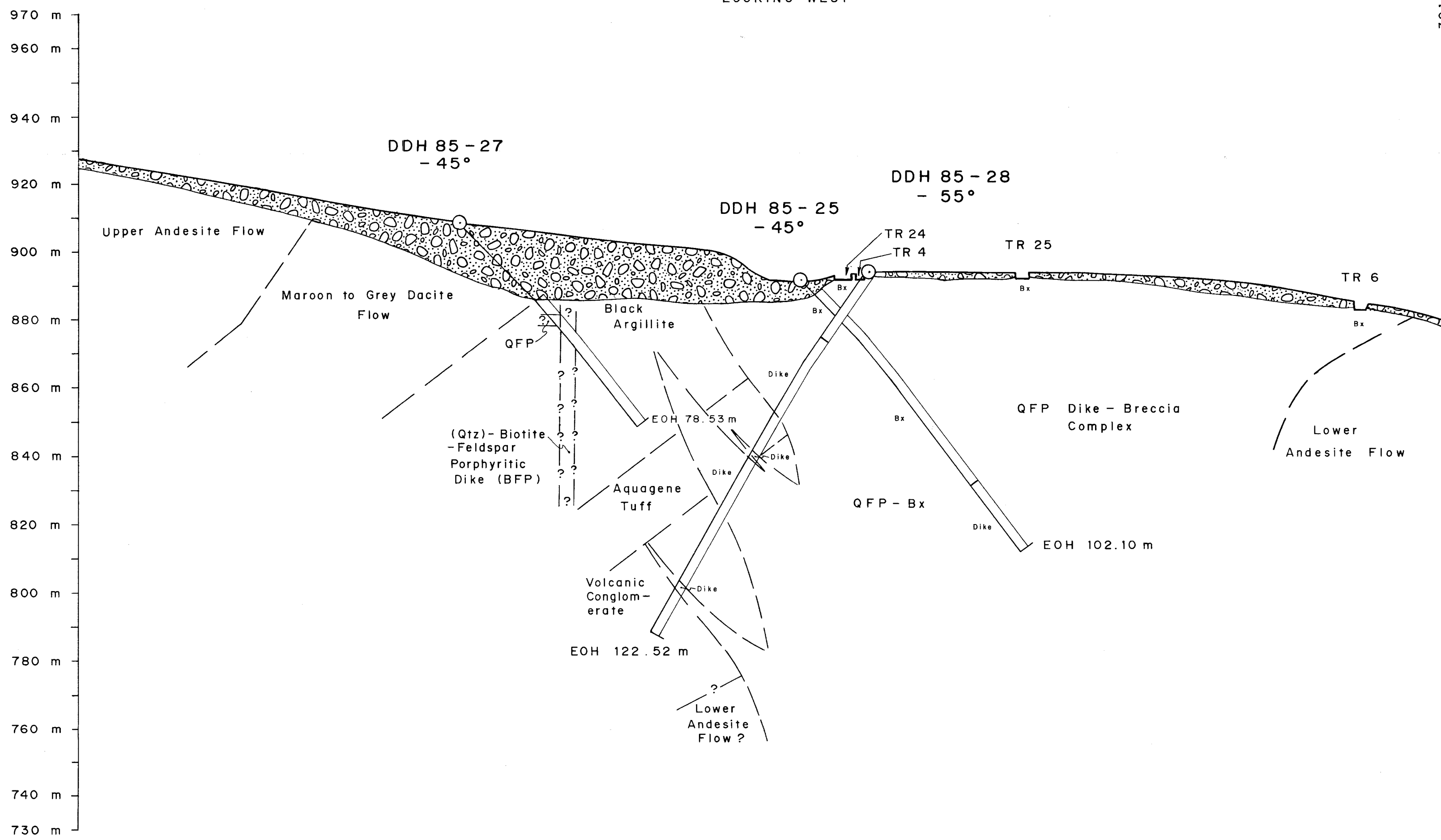


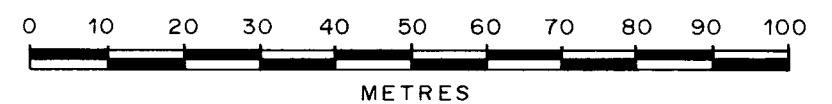
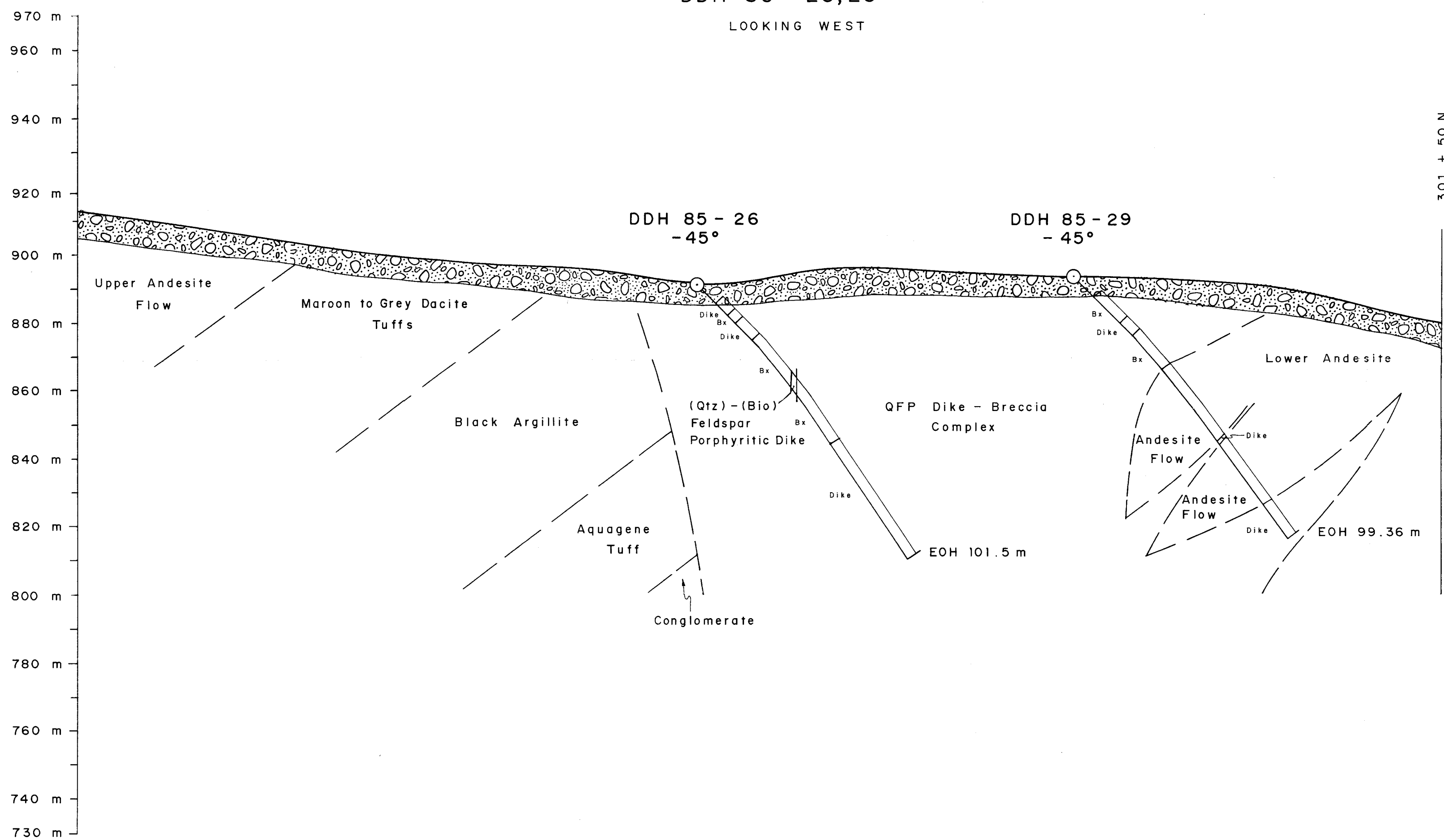
SECTION 299 + 60 E
DDH 85 - 23, 24
LOOKING WEST



SECTION 299 + 20 E
DDH 85 - 25, 27 & 28
LOOKING WEST



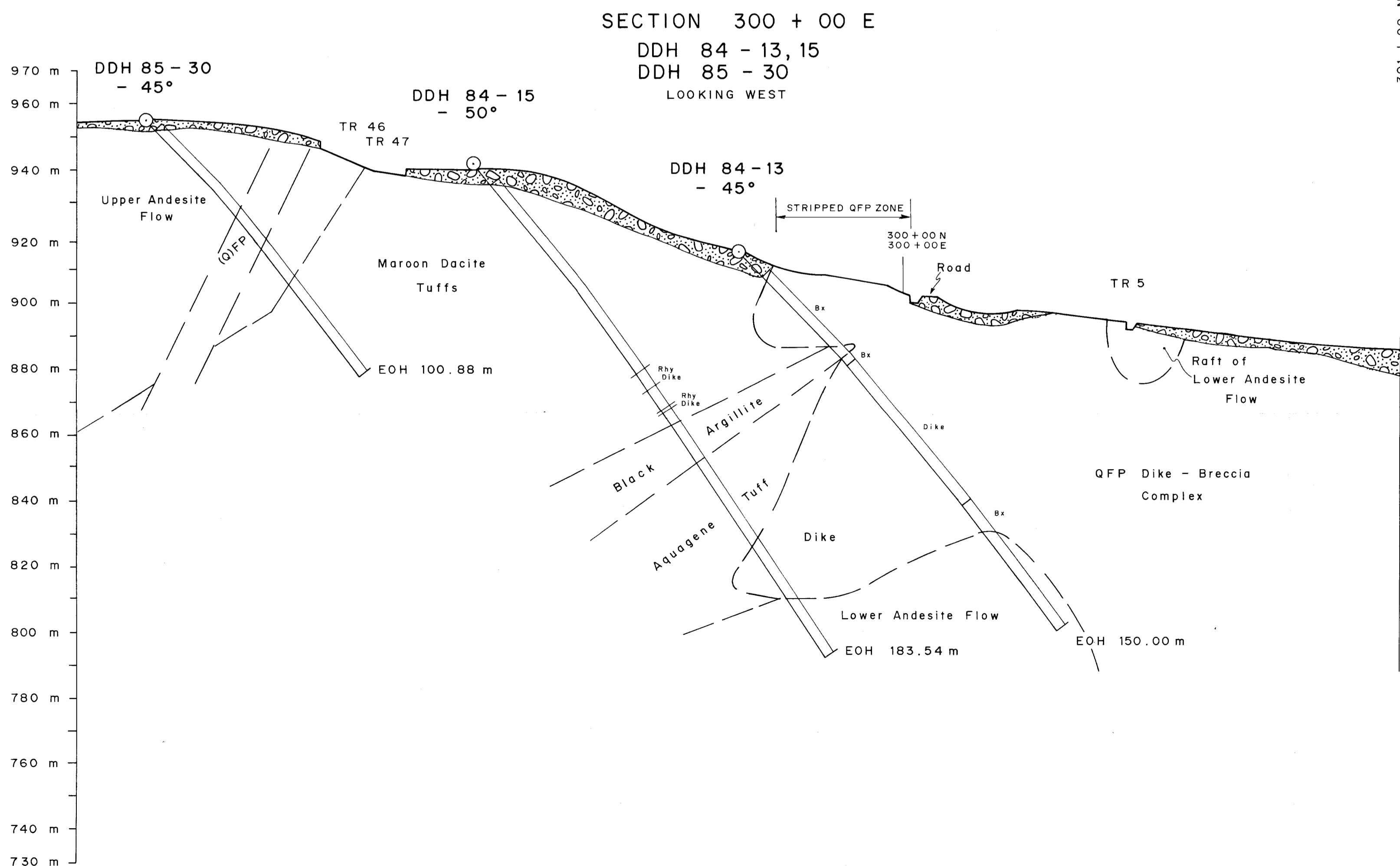
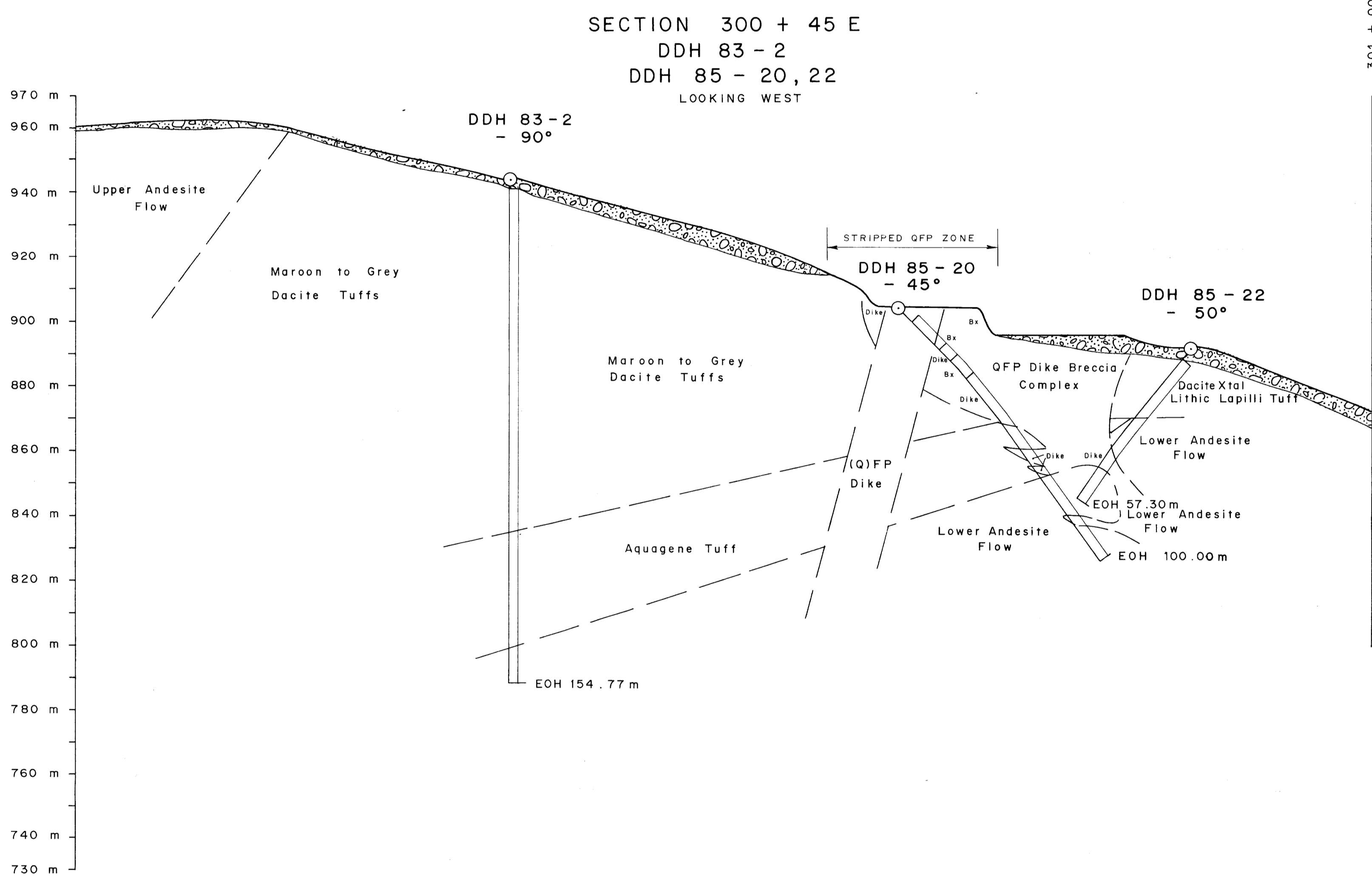
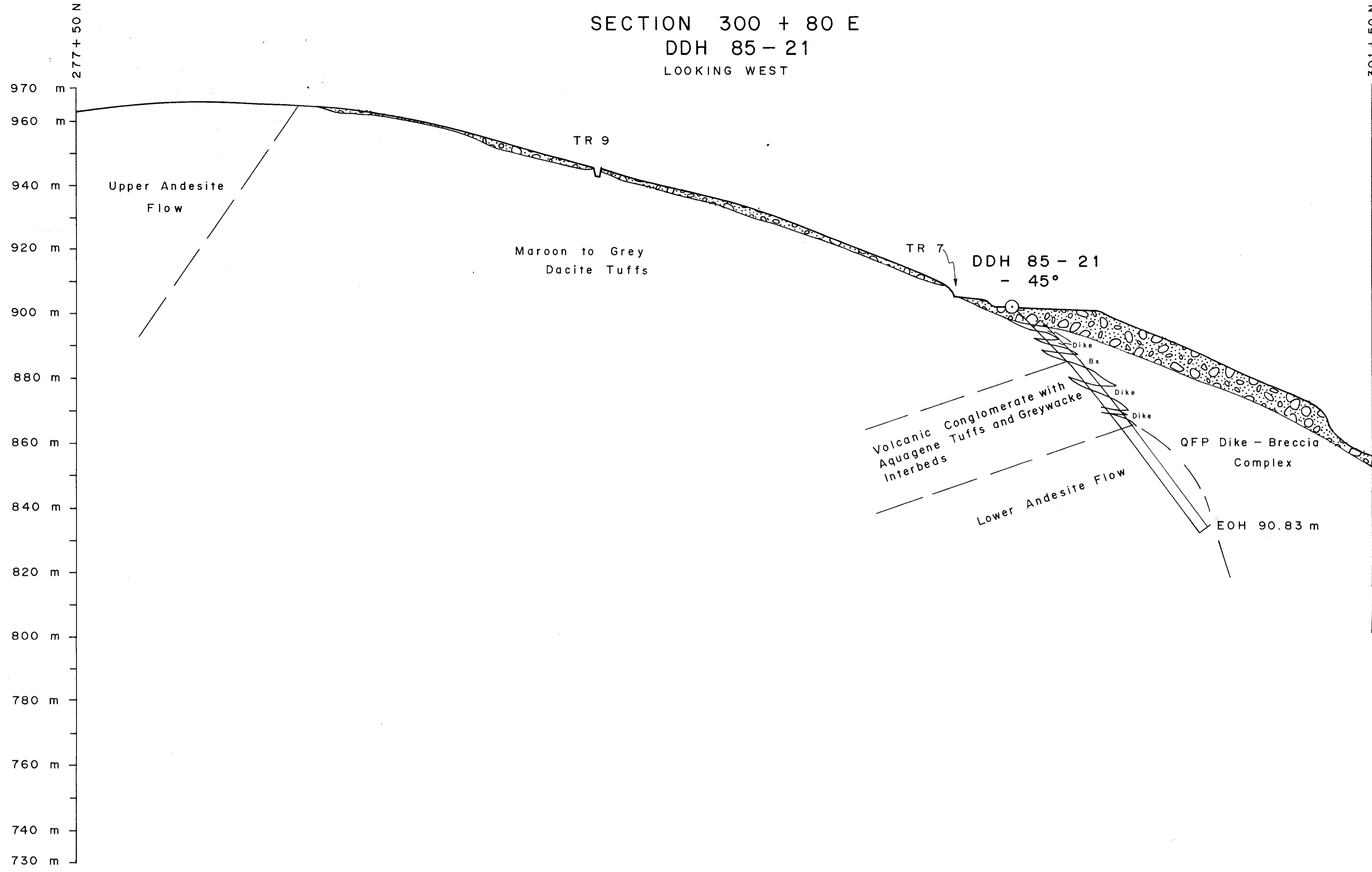
SECTION 298 + 80 E
DDH 85 - 26, 29
LOOKING WEST



GEOLOGICAL BRANCH
ASSESSMENT REPORT

14,698
SEI CO DIVISION -
BP RESOURCES CANADA LIMITED
BLACK CREEK PROJECT
GEOLOGICAL
CROSS SECTIONS

SCALE	1 : 1000	DRAWN BY:	I. T.	FIG. 17
DATE	SEPT 1985	DRAFTED BY:	E. B. W.	
N.T.S.	93 L / 7	PROJ.	10100	REPORT BPVR 85 - 24



**GEOLOGICAL BRANCH
ASSESSMENT REPORT**

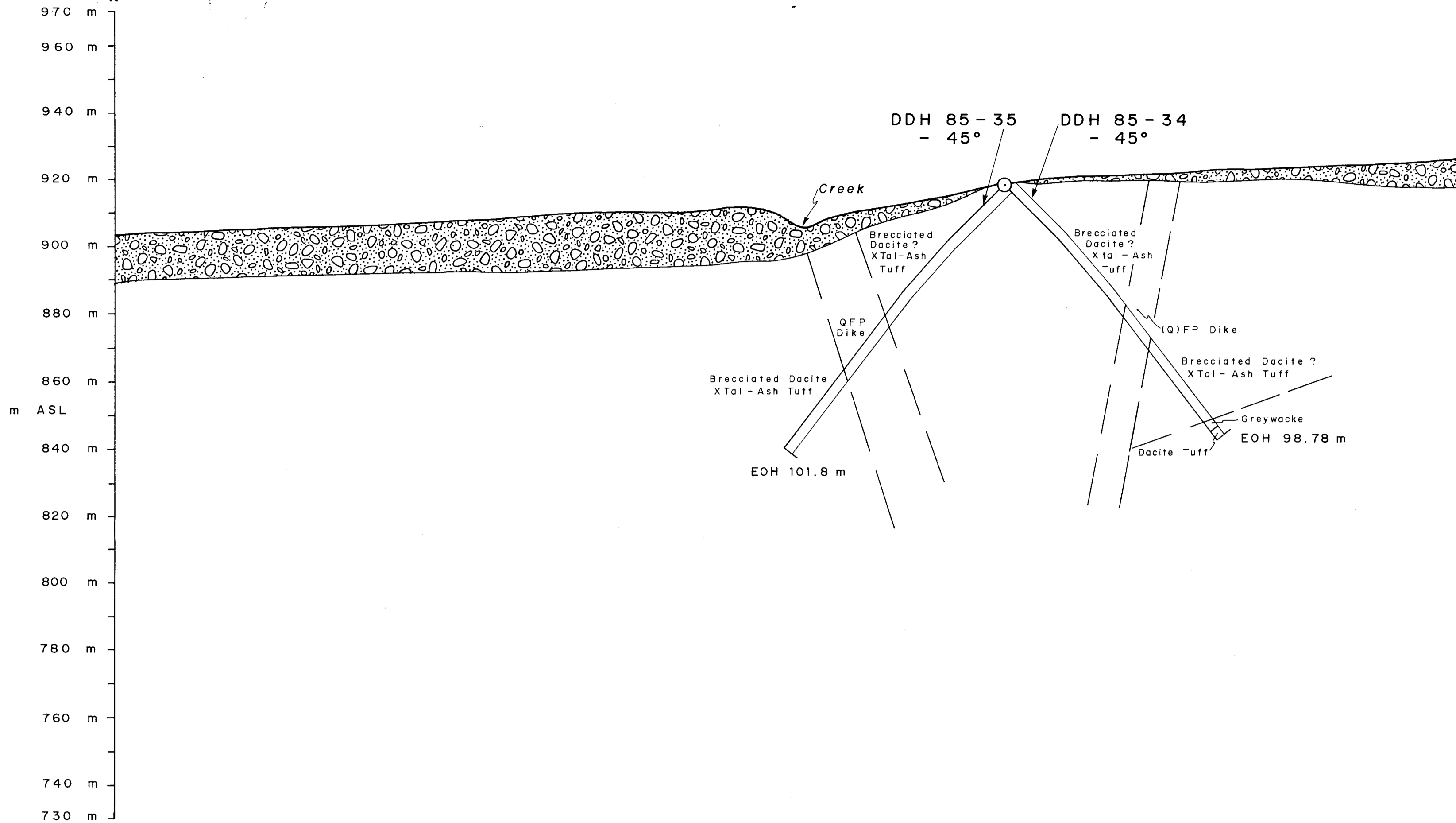
14,698 ^{EP}

SELCO DIVISION -
BIORESOURCES CANADA LIMITED

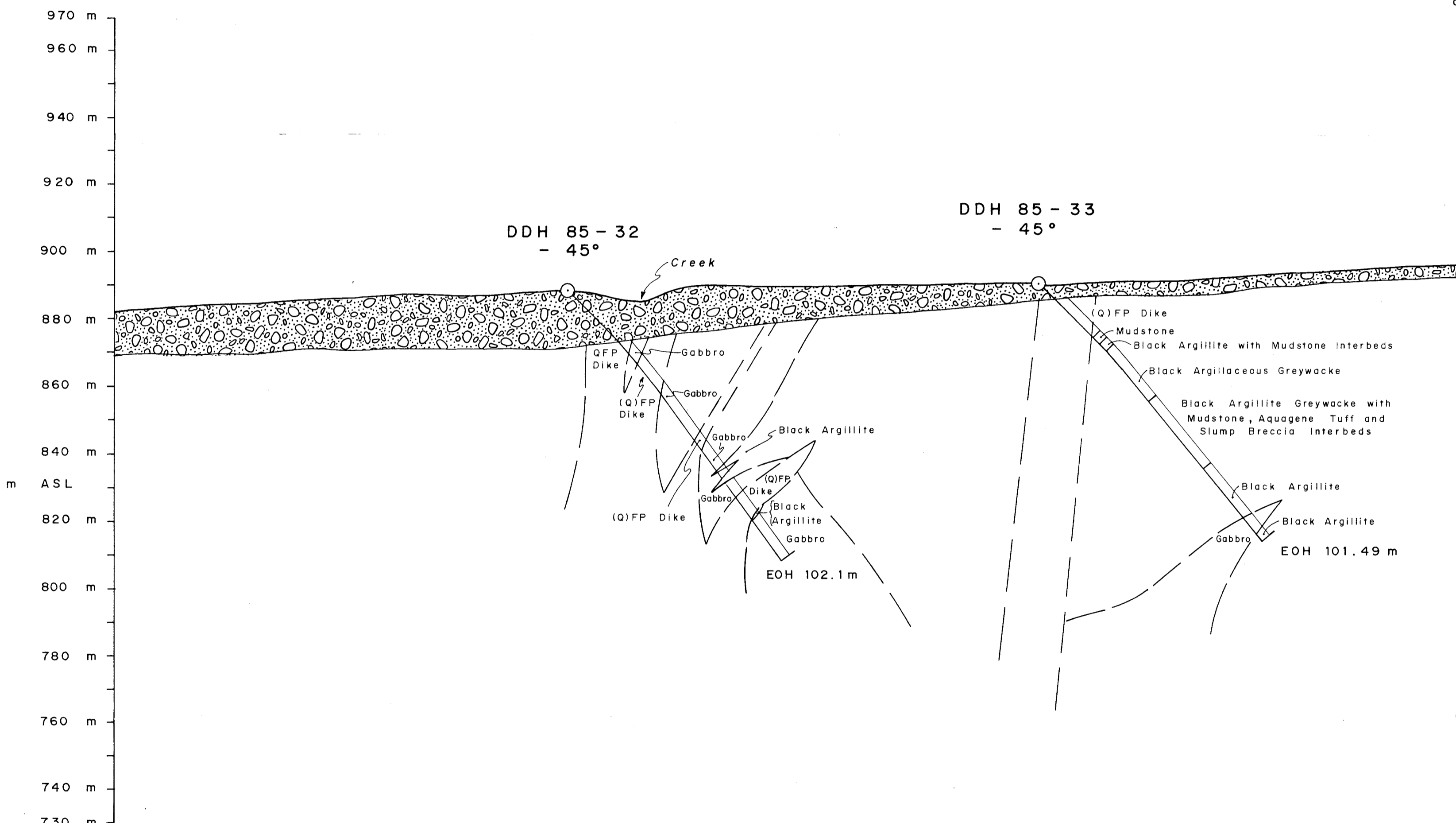
BUCK CREEK PROJECT
GEOLOGICAL
CROSS SECTIONS

SCALE	1 : 1000	DRAWN BY:	I. T.	FIG. 18
DATE	SEPT 1985	DRAFTED BY:	E. B. W.	
N.T.S.	93 L / 7	PROJ.	10100	REPORT BPVR 85-24

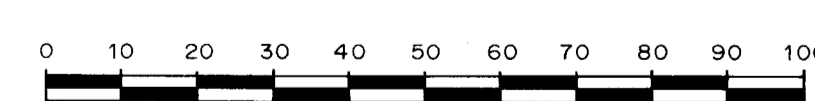
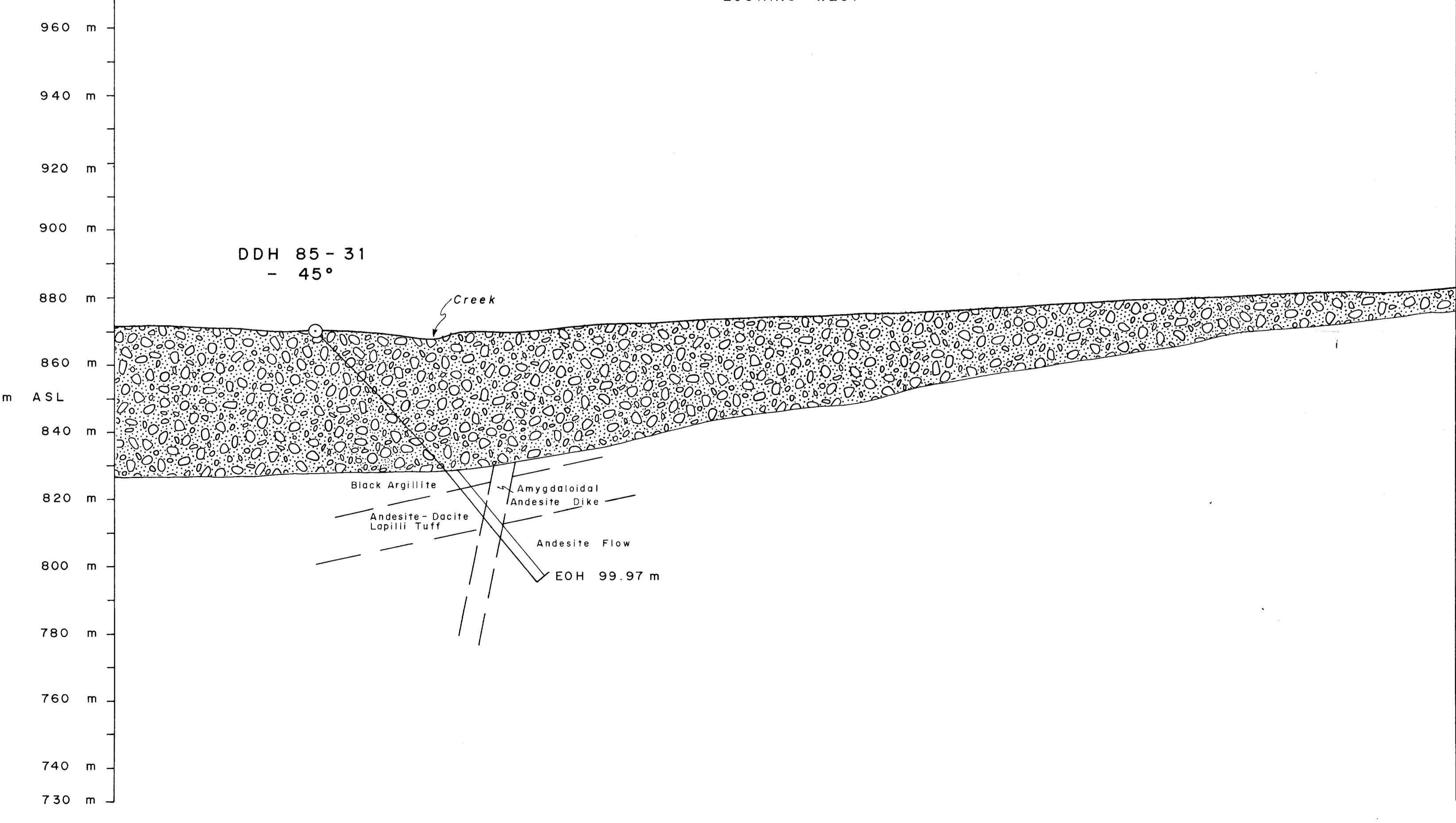
SECTION 302 + 25 E
DDH 85 - 34, 35
LOOKING WEST



SECTION 301 + 20 E
DDH 85 - 32, 33
LOOKING WEST



SECTION 300 + 00 E
DDH 85 - 31
LOOKING WEST

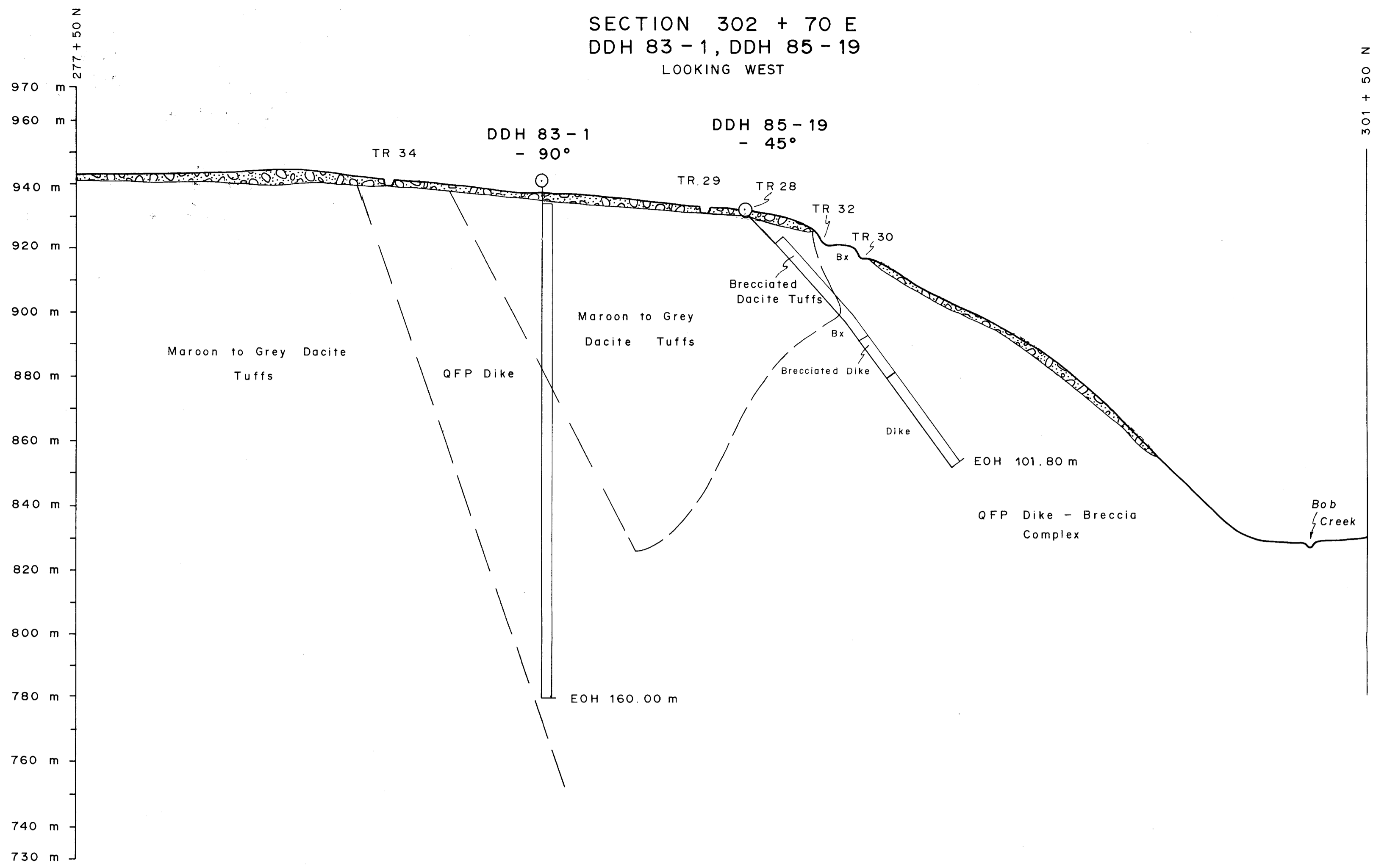


GEOLOGICAL BRANCH
ASSESSMENT REPORT

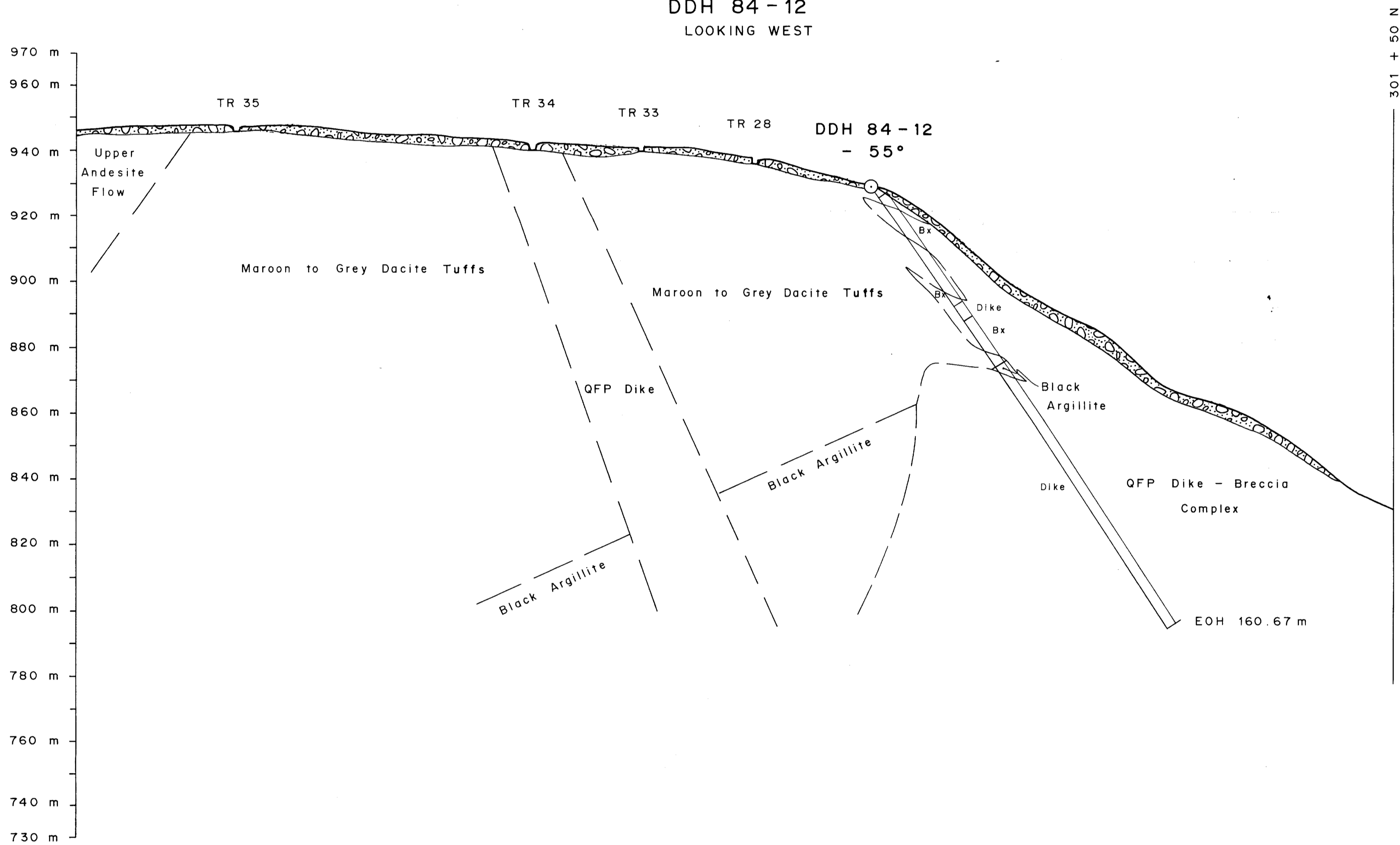
147698
SILCO DIVISION -
BP RESOURCES CANADA LIMITED
BUCK CREEK PROJECT
GEOLOGICAL
CROSS SECTIONS

SCALE	1 : 1,000	DRAWN BY:	I. T.	FIG. 19
DATE	SEPT 1985	DRAFTED BY:	E. B. W.	
N.T.S.	93 L / 7	PROJ.	10 100	REPORT BPVR 85 - 24

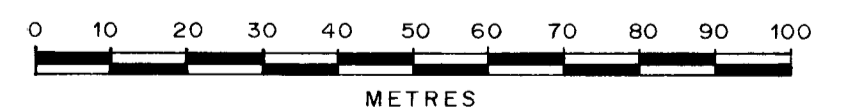
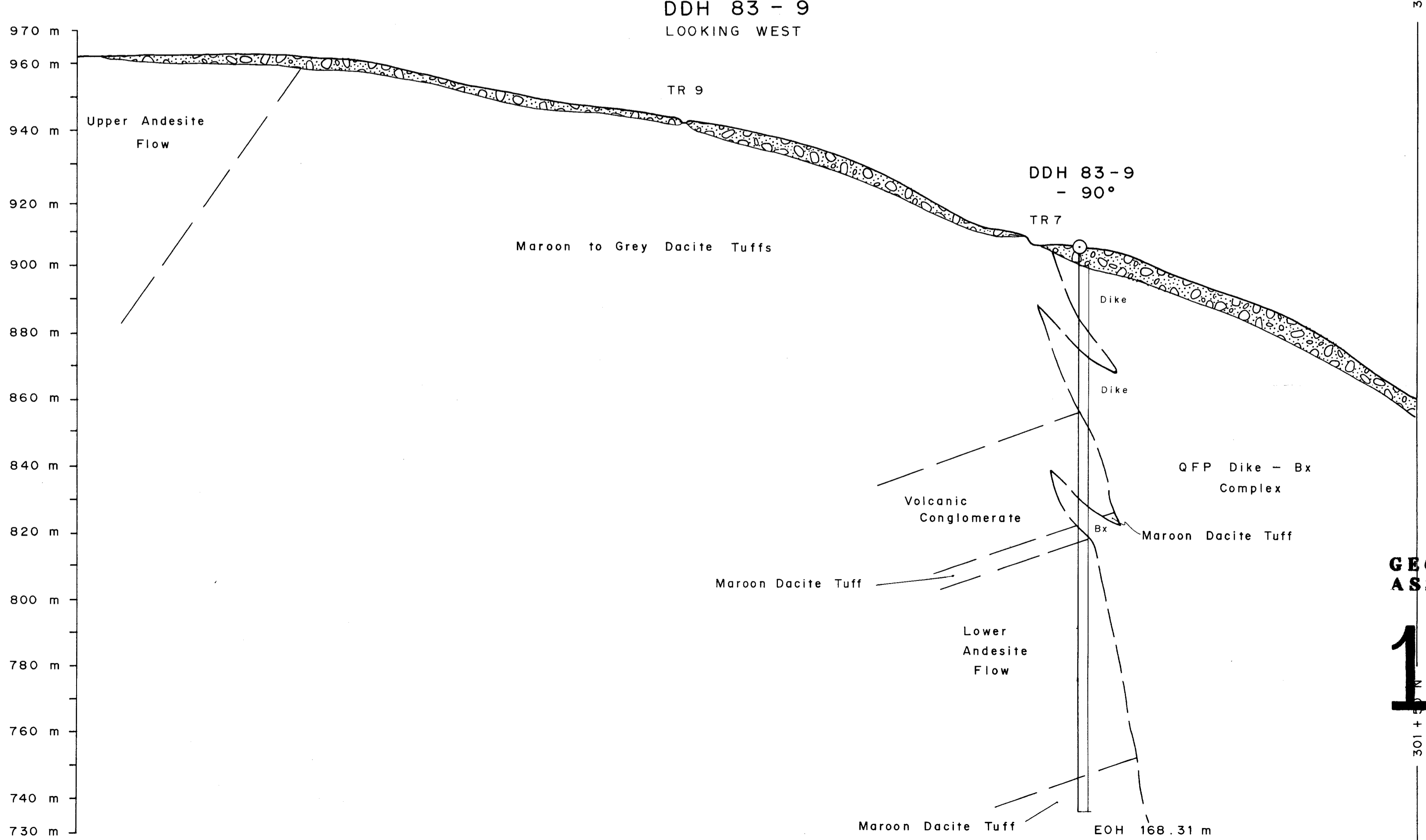
SECTION 302 + 70 E
DDH 83-1, DDH 85-19
LOOKING WEST



SECTION 302 + 10 E
DDH 84-12
LOOKING WEST



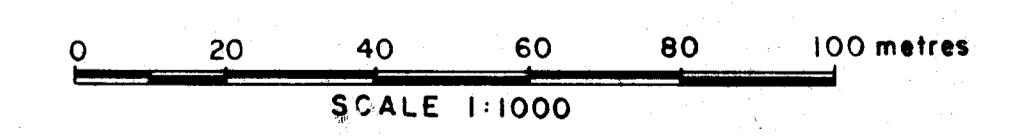
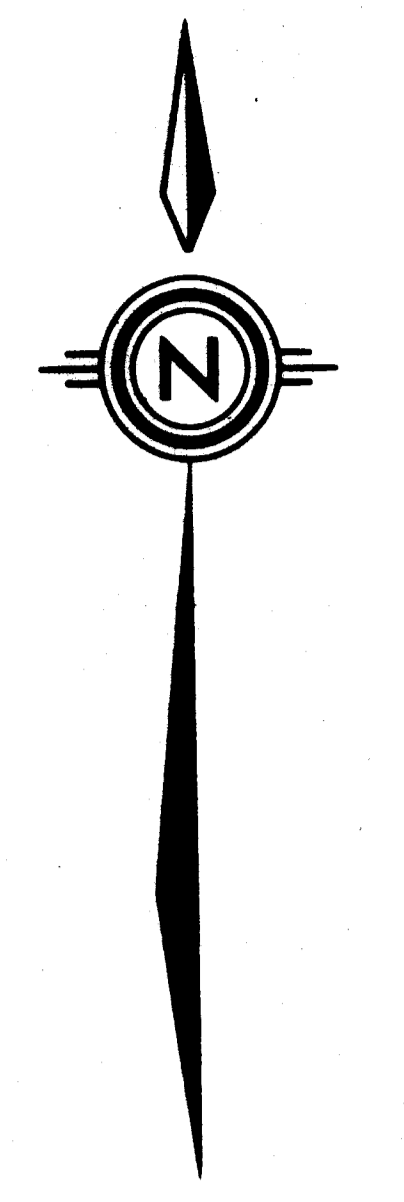
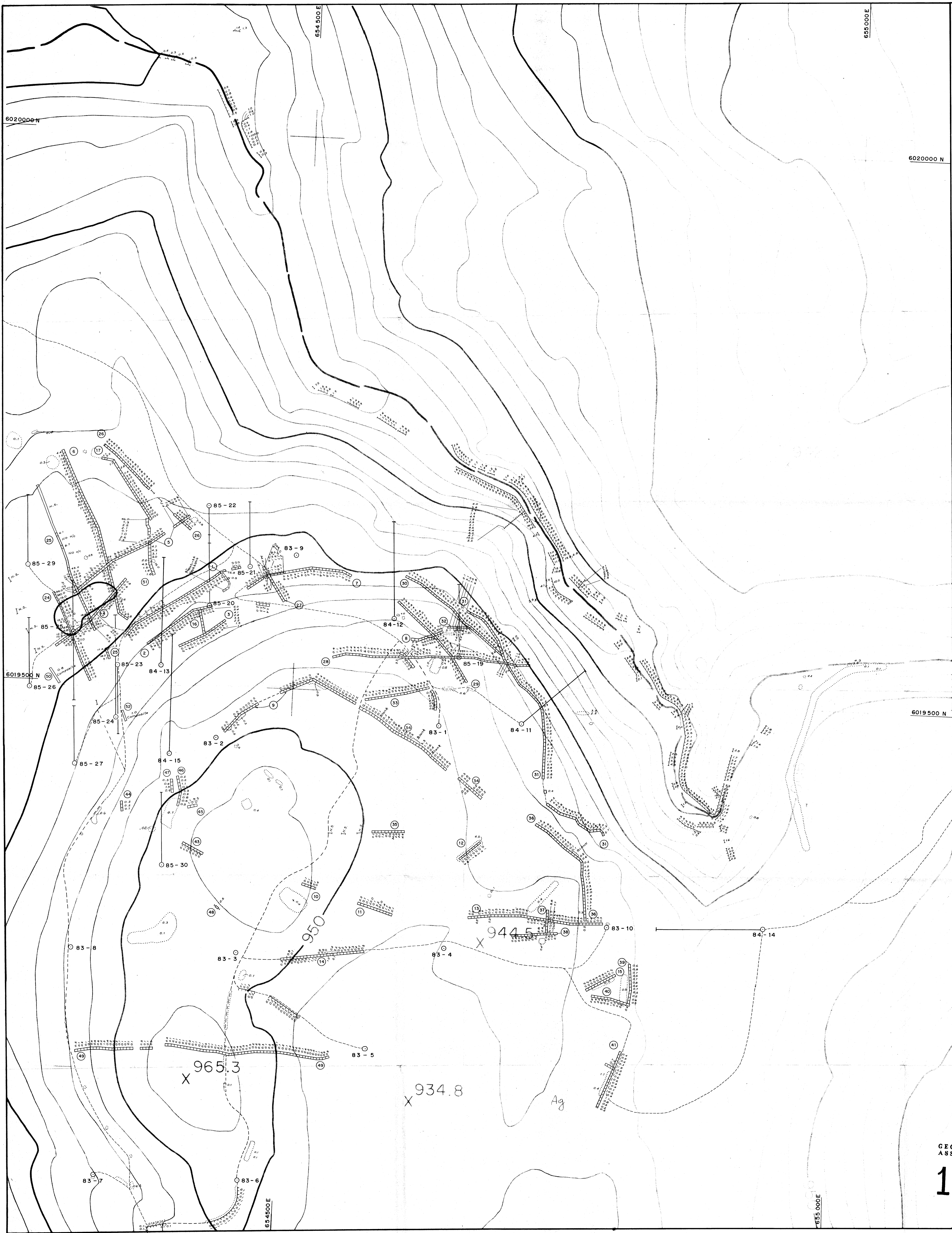
SECTION 301 + 20 E
DDH 83-9
LOOKING WEST



GEOLOGICAL BRANCH
ASSESSMENT REPORT

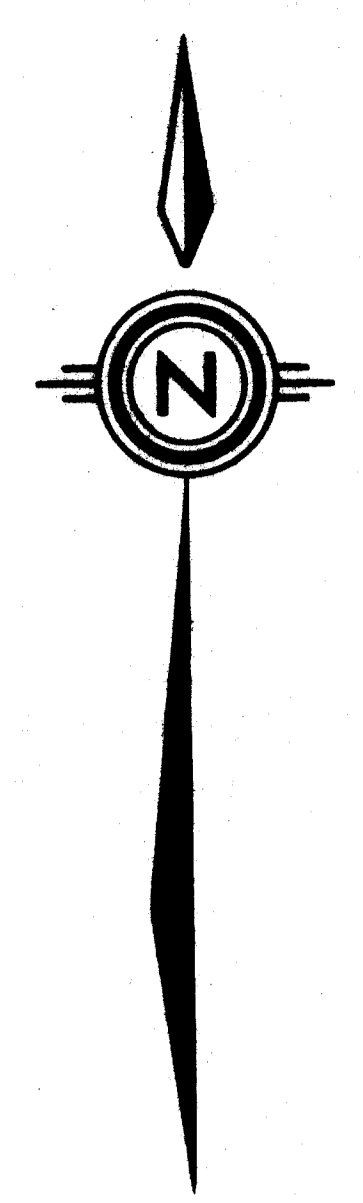
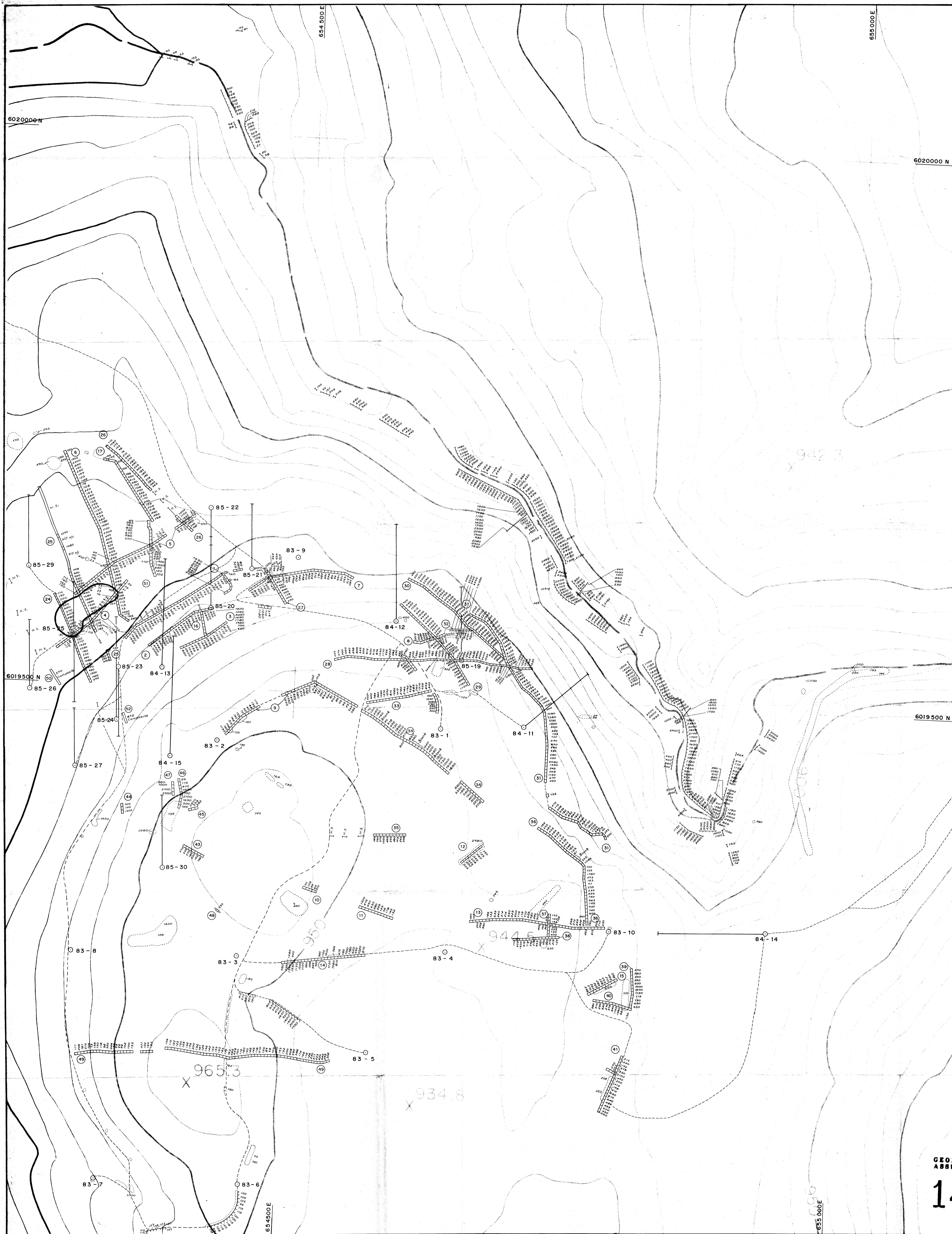
14,898
SELCO DIVISION -
BP RESOURCES CANADA LIMITED
BUCK CREEK PROJECT
GEOLOGICAL
CROSS SECTIONS

SCALE	1 : 1000	DRAWN BY:	I. T.	FIG. 20
DATE	SEPT 1985	DRAFTED BY:	E. B. W.	
N.T.S.	93 L / 7	PROJ.	10100	REPORT BPVR 85-24



BP
 SELCO DIVISION -
 BP RESOURCES CANADA LIMITED
 GEOLOGICAL BRANCH
 ASSESSMENT REPORT
BUCK CREEK PROJECT
 ROCK CORE GEOCHEMISTRY
14,698
 SILVER (ppm)

SCALE	1:1,000	DRAWN BY	I. TRINDER	FIG.	22
DATE	NOV 1985	DRAFTED BY	E. B. W.		
N.T.S.	93 L/7 E	PROJ.	10100	REPORT	BPVR 85-24



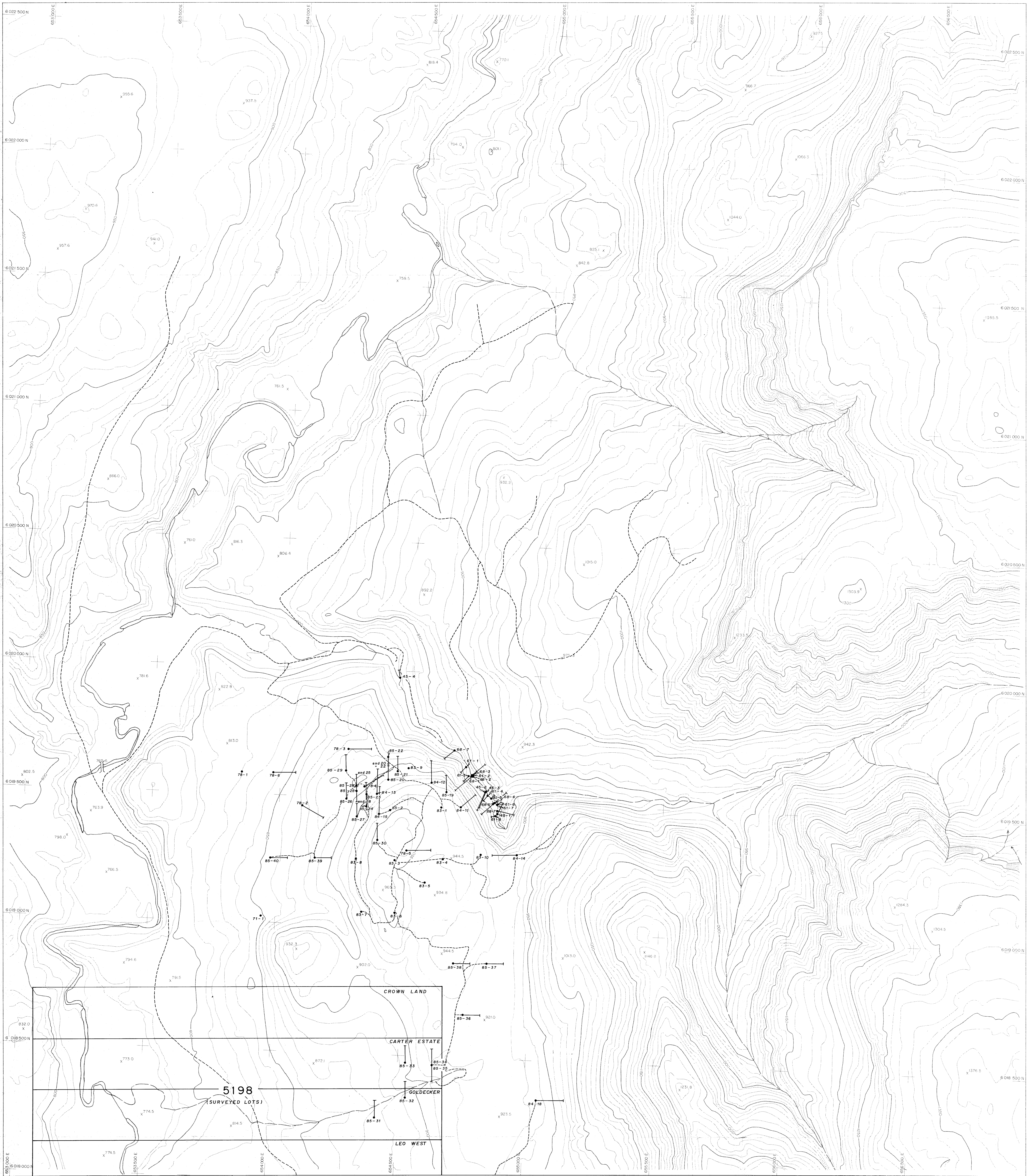
0 20 40 60 80 100 metres
SCALE 1:1000

BP SELCO DIVISION -
BP RESOURCES CANADA LIMITED

GEOLOGICAL BRANCH
ASSESSMENT GROUP

ROCK CHIP GEOCHEMISTRY
14,698 ZINC (ppm)

SCALE	1:1,000	DRAWN BY	I. TRINDER	FIG.	23
DATE	NOV 1985	DRAFTED BY	E. B. W.		
N.T.S.	93 L/7E	PROJ.	10100	REPORT	BPVR 85-24



LEGEND

● 1945 - 1978 Diamond Drill Holes

○ 1983 - 1985 Diamond Drill Holes

YEAR	HOLES	COMPANY
1945	1 - 4	PREMIER GOLD MINES
1961	1 - 8	DENISON MINES LIMITED
1968	1 - 7	ASARCO
1978	1 - 6	DUPONT OF CANADA EXPLORATION LTD.
1983	1 - 10	SELCO INCORPORATED
1984	11 - 18	SELCO DIVISION - BP RESOURCES CANADA LTD.
1985	19 - 40	SELCO DIVISION - BP RESOURCES CANADA LTD.

GEOLOGICAL BRANCH
ASSESSMENT REPORT

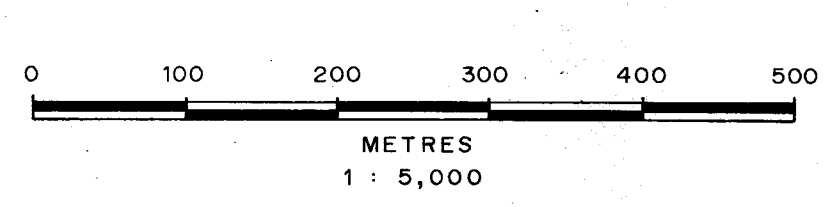
THE McELHANNY GROUP LTD.
 1164 Alford Street, Vancouver, B.C. Canada
 CONTOUR MAPPING
 on datum based on limited ground
 control resulting in good relative but uncertain
 absolute map accuracy.
 and related aerial photography flown in July 1981
 and plotted on a scale of 1:20,000.

Scale: 1:5000
 Contour Interval: 10 metres
 Date: April 1984
 Job No. 40105-0
 Sheet No. 2 of 2

14698

SELCO DIVISION -
 BP RESOURCES CANADA LIMITED

BUCK CREEK
1945 - 1985 DIAMOND
DRILL HOLE LOCATIONS



DRAWN BY I. TRINDER	DATE SEPT 1985	N.T.S.	PLAN 31
TRACED BY E. B. W.	DATE OCT 1985	93 L / 7	BPVR 85-24