

14902  
7/87

TASEKO PROJECT  
ASSESSMENT REPORT  
WORK UNDERTAKEN ON  
BLUFF 12, BLUFF 17, AN, AN2, AN4  
CLINTON MINING DIVISION  
NTS 92 0/3W  
LAT. 51°06.4', LONG. 123°17'

86-446

FILMED

OWNER(S)/OPERATOR(S): RON LANE  
WESTMIN RESOURCES LIMITED

ESSO MINERALS CANADA LIMITED

**GEOLOGICAL BRANCH**  
**ASSESSMENT REPORT**  
JULY 1986

14,902

## TABLE OF CONTENTS

	<u>PAGE NO.</u>
I. INTRODUCTION	1
A. EXPLORATION TARGET	1
B. LOCATION, ACCESS AND TOPOGRAPHY	1
C. HISTORY	1
D. CLAIMS	2
II. SOIL GEOCHEMISTRY	3
A. SAMPLING	3
B. ANALYSIS	4
C. RESULTS/CONCLUSIONS	4
III. EXPENDITURES	4
IV. STATEMENT OF QUALIFICATIONS	5
V. ATTACHMENTS	6
Figure 86-1	Location Map - Taseko Project, scale 1:1,000,000
Figure 86-2	Location Map - Bluff Claim and AN Claim Area, Windfall, Windfall 2 and Province Crown Grants, scale 1:50,000
Figure 86-15	20,000E Grid - East Sheet: Soil Geochemistry - Antimony, scale 1:5,000
Figure 86-16	20,000E Grid - East Sheet: Soil Geochemistry - Mercury, scale 1:5,000
VI. APPENDIX I	ANALYTICAL RESULT CERTIFICATES

I. INTRODUCTION

A. Exploration Target

Target is a bulk tonnage epithermal gold deposit.

B. Location, Access and Topography

Property is located in southwestern British Columbia in the Clinton Mining District, 225 km due north of Vancouver, and 140 km southwest of Williams Lake. It has moderate relief in most places and is covered by a sparse but mature pine forest. The surrounding area is mountainous.

C. History

1920's and early 1930's: Taylor Windfall mine, situated within Windfall and Windfall 2 Crown Grants, produced gold from small high grade eluvial and near surface lode deposits. Total production would be worth U.S. \$300,000 (at current prices).

1930's: Underground development of Taylor Windfall was undertaken on two levels to test drill intersections. Only minor amounts of production were achieved.

1952-53: Taylor Windfall was rehabilitated by lessors, however, subsequent production was minimal.

October, 1982: Westmin staked Bluff 1 and 2 claim block surrounding and overlying Taylor Windfall mine workings.

July-August, 1983: Westmin undertook a 5 week preliminary exploration program to ascertain the Taseko property's potential for an epithermal gold deposit.

July 19, 1983: Westmin Resources Limited optioned Windfall, Windfall 2, and Province Crown Grants from Taywin Resources Limited.

November, 1983: Bluff claims 3-8 (total of 15 units) were staked.

June, 1984: Joint Venture agreement between Westmin Resources and Esso Minerals Canada on Taseko Property.

June-September, 1984: Taseko project exploration program undertaken which consisted of soil and rock geochemistry, geophysics, geological mapping, underground rehabilitation, underground mapping and sampling, and diamond drilling.

August, 1984: Bluff claims 9-10 (total of 6 units) were staked.

July-October, 1985: Taseko project exploration program was undertaken which consisted of geological mapping, geophysics, soil and rock geochemistry, diamond drilling and theodolite surveying.

July-August, 1985: Bluff claims 12, 16, 17, 18, 19, 20, 21 and 22 (total of 40 units) were staked.

September, 1985: AN claims AN, AN 2, AN 3 and AN 4 (total of 51 units) were optioned from Andre Pomerleau and Taseko Gold Partnership.

D. Claims

The following claims constitute the 145 unit Taseko Property:

<u>MINERAL CLAIM NAME</u>	<u>RECORD NO.</u>	<u>NO. OF UNITS</u>
Bluff 1	1283(10)	15
Bluff 2	1284(10)	15
Bluff 3	1686(12)	9
Bluff 4	1682(12)	1
Bluff 5	1683(12)	1
Bluff 6	1684(12)	1
Bluff 7	1685(12)	1
Bluff 8	1687(12)	2

<u>MINERAL CLAIM NAME</u>	<u>RECORD NO.</u>	<u>NO. OF UNITS</u>
Bluff 9	1828(9)	3
Bluff 10	1829(9)	3
Bluff 12	1923(8)	2
Bluff 16	1924(8)	6
Bluff 17	1925(8)	4
Bluff 18	1931(9)	3
Bluff 19	1932(9)	8
Bluff 20	1933(9)	10
Bluff 21	1934(9)	6
Bluff 22	1935(9)	1
Windfall CG	L2643	1
Windfall 2 CG	L2644	1
Province	L2649	1
AN	1219(7)	9
AN 2	1454(7)	18
AN 3	1455(7)	6
AN 4	1456(7)	<u>18</u>
		145

## II. SOIL GEOCHEMISTRY

### A. Sampling

A total of 479 soil samples were collected along grid, contour and traverse lines. B horizon soil was collected along grid lines. Traverse and contour line sampling collected C horizon soil at 2 m intervals, which was combined into 50 m composite samples. In areas of mainly talus, the soil was obtained by field seiving.

B. Analysis

Samples were analyzed for antimony and mercury by Chemex Labs Ltd. of 212 Brooksbank Avenue, North Vancouver, B.C. The analyses were by atomic absorption method.

C. Results/Conclusions

Results are plotted on figures 86-15 and 86-16. Anomalous thresholds are indicated on the figures, and were calculated statistically from a much larger, adjacent data set. Anomalous areas are outlined by contouring.

Sampling of the east sheet area defined virtually no anomalous antimony values. However, a number of Hg anomalies were defined in association with strongly altered andesite lapilli tuffs. They warrant follow-up by additional soil sampling, rock sampling and geological mapping.

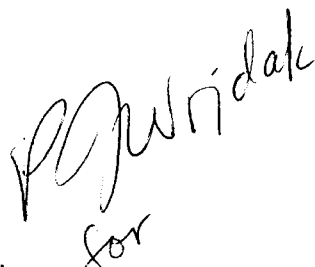
III. EXPENDITURES

Charter Flying - Fixed Wing	\$ 188.40
Camp Expense	317.70
Materials & Supplies	191.44
Assays/Geochemical Analysis (479 samples x \$8.45)	4,047.55
Trucking	45.26
Salaries	2,283.02
Automobile	250.42
Communications and Expediting	139.92
Overhead	<u>746.37</u>
TOTAL	\$8,210.08

IV. STATEMENT OF QUALIFICATIONS

I, Ron Lane, of 7673 Sutton Place, North Delta, B.C., graduated from the University of Alberta, Edmonton, Alberta, in 1971, with a Bachelor of Science - Geology. Since graduation, I have worked on a continuous basis as an exploration geologist in Alberta, British Columbia, Yukon Territory, Northwest Territories, Southern Africa and Italy.

I personally supervised the soil geochemical work described in this report.


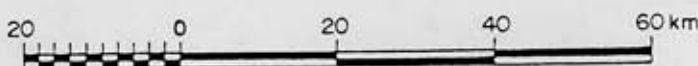
A handwritten signature in black ink, appearing to read "Ron Lane" with a stylized flourish underneath.

Ron Lane  
Project Geologist  
Mining Division  
Westmin Resources Limited

July 28, 1986

86-463



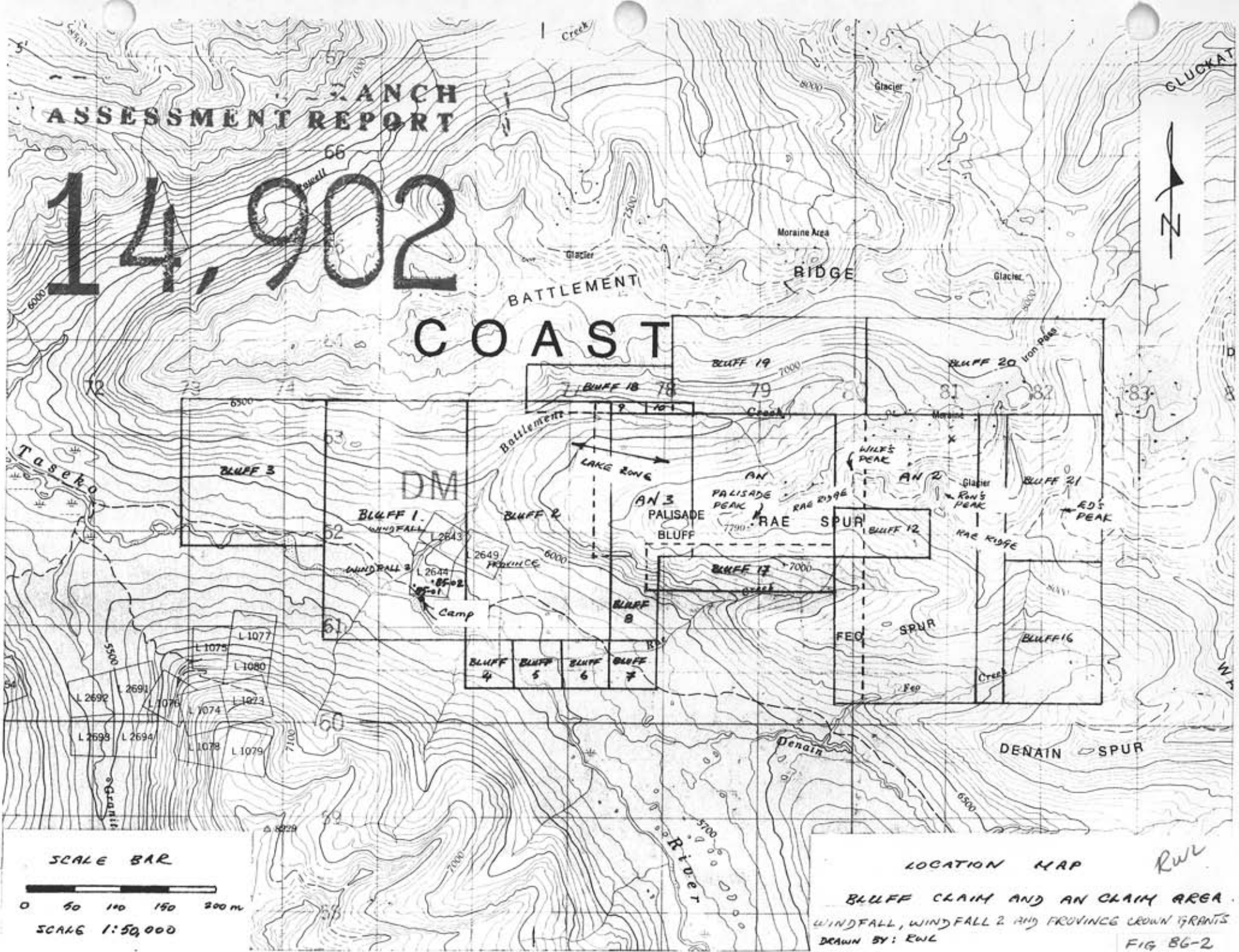
 <b>Westmin Resources Limited</b> MINING DIVISION	
Work By	<b>GEOLOGICAL BRANCH</b> <b>ASSESSMENT REPORT</b> <b>TASEKO PROJECT</b>  <b>14,902</b> LOCATION MAP
Date Drafted	
April, 1985	
Drafted By	
Date Revised	
Revised By	
Ron Lane	
N.T.S. Number	
NM 9/10	
 SCALE 1:1,000 000	
Figure <b>86-1</b>	



ANCH  
ASSESSMENT REPORT

14,902

BATTLEMENT  
COAST



SCALE BAR



SCALE 1:50,000

LOCATION MAP

*Rwl*

BLUFF CLAIM AND AN CLAIM AREA.  
WINDFALL, WINDFALL 2 AND PROVINCE CROWN GRANTS  
DRAWN BY: RWL

FIG 86-2

V. ATTACHMENTS



LEGEND

- SOL SAMPLE, B-HORIZON
- B-SIDE OF LINE
- COMPOSITE SOIL SAMPLE  
taken along traverse line TV1, i.e.  
C horizon soil lifted from lateral  
level every 2m over a 50m interval

CONTOUR INTERVAL

- 0-4.9ppm
- 5.0-9.9ppm
- 10.0-19.9ppm (probably anomalous)
- 20.0-39.9ppm (anomalous)
- 40.0-79.9ppm
- ≥ 80ppm (very anomalous)

ANOMALOUS THRESHOLD SET STATISTICALLY AND  
REFINED VISUALLY.

**GEOLOGICAL BRANCH  
ASSESSMENT REPORT**

**14,902**

**WESTMIN** Westmin Resources Limited  
MINING DIVISION

Work By  
R.L. and/or E.S.  
Date Drafted  
April 1986

Checked By  
R.A. Ivory  
Date Revised

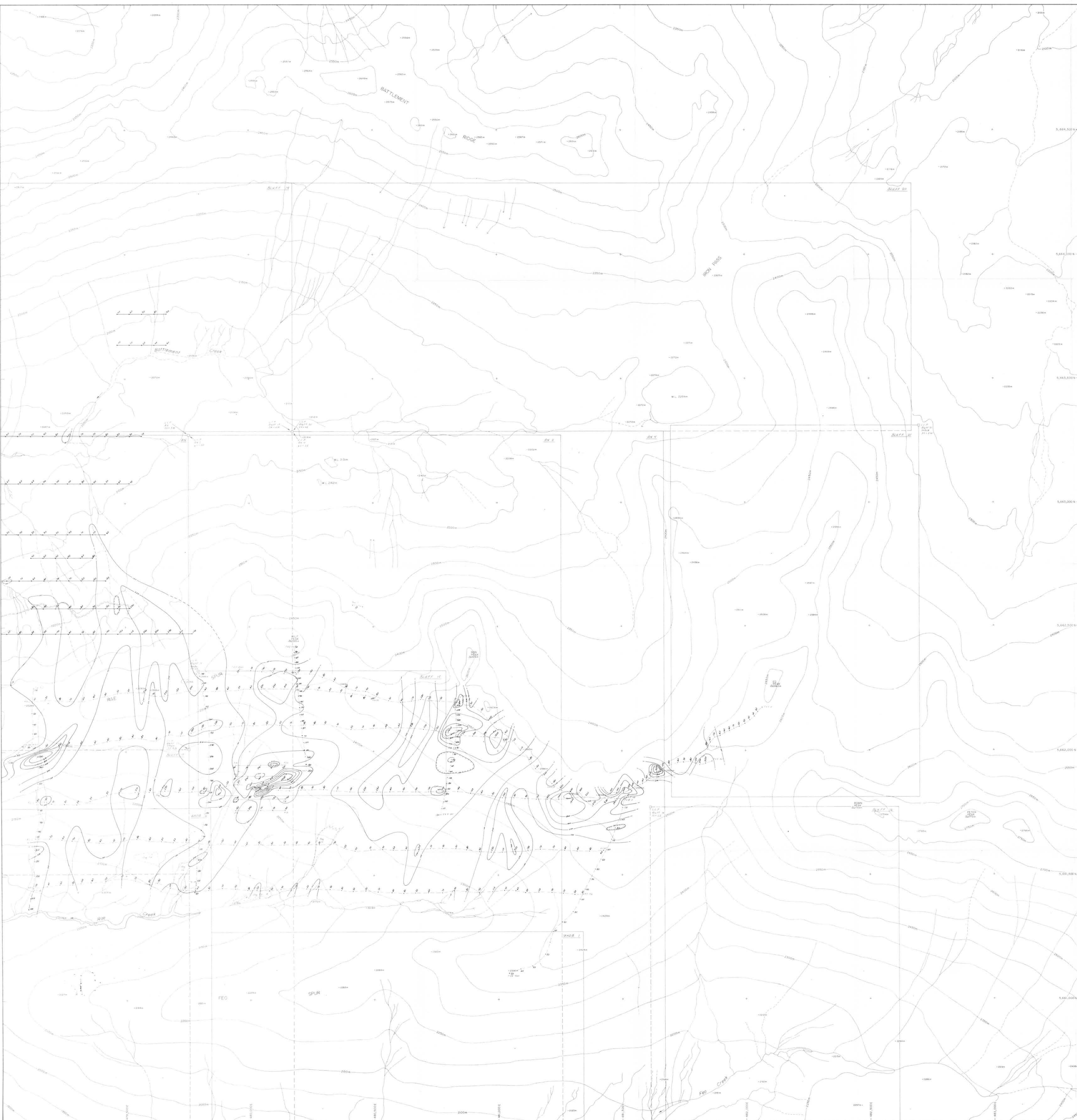
Revised By

NTS Number  
92.0/3

TASEKO PROJECT  
20,000E GRID - EAST SHEET  
ANTIMONY SOIL GEOCHEM

Figure  
86-15

SCALE 1:5,000



**LEGEND**

SOIL SAMPLE, B-HORIZON  
 GRID LINE  
 TV10  
 TV12  
 COMPOSITE SOIL SAMPLE  
 (taken along traverse line TV1, i.e.  
 C-Horizon soil, 10m from road,  
 taken every 2m over a 50m interval)

- CONTOUR INTERVAL**
- 0-99.9ppb
  - 100.0-199.9ppb
  - 200.0-399.9ppb (probably anomalous)
  - 400.0-799.9ppb (anomalous)
  - 800.0-1599.9ppb
  - ≥ 1600.0ppb (very anomalous)
- ANOMALOUS THRESHOLD SET STATISTICALLY AND  
 REFINED VISUALLY

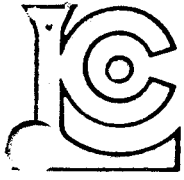
**GEOLOGICAL BRANCH  
 ASSESSMENT REPORT**

**14,902**

<p><b>Westmin Resources Limited</b>          MINING DIVISION</p>	<p>Work By          RL and/or ES          Date Drafted          April 1985          Drafted By          R.A. Ivory          Date Revised</p>	<p><b>TASEKO PROJECT</b>          20,000E GRID - EAST SHEET          MERCURY SOIL GEOCHEM</p>
	<p>Revised By</p>	<p>Figure          86-16</p>
<p>NTS Number          92 0/3</p>		<p>SCALE 1:5,000</p>

VI. APPENDIX I

ANALYTICAL RESULT CERTIFICATES



# Chemex Labs Ltd.

Analytical Chemists      Geochemists      Registered Assayers

212 Brooksbank Ave.  
North Vancouver, B.C.  
Canada      V7J 2C1  
Phone: (604) 984-0221  
Telex: 043-52597

## CERTIFICATE OF ANALYSIS

TO : WESTMIN RESOURCES LIMITED

P.O. Box 49066, The Bentall Centre  
VANCOUVER, B.C.  
V7X 1C4

CERT. # : AB514913-001-A  
INVOICE # : 18514913  
DATE : 25-AUG-85  
P.O. # : RWL  
TASEKU

ATTN: H. MEADE      CC: RON LANE

Sample description	Prep code	Hg ppb	So ppm			
TRAV 1 000-046	201	50	1.2	--	--	--
TRAV 2 000-025	201	80	0.9	--	--	--
TRAV 2 025-050	201	60	1.2	--	--	--
TRAV 2 050-075	201	80	1.3	--	--	--
TRAV 2 075-100	201	120	2.4	--	--	--
TRAV 2 100-125	201	150	3.0	--	--	--
TRAV 2 125-150	201	200	2.8	--	--	--
TRAV 2 150-175	201	100	2.6	--	--	--
TRAV 2 175-200	201	120	2.0	--	--	--
TRAV 2 200-225	201	90	2.6	--	--	--
TRAV 2 225-250	201	90	2.5	--	--	--
TRAV 2 250-275	201	120	4.6	--	--	--
TRAV 2 275-300	201	90	3.0	--	--	--
TRAV 2 300-325	201	90	2.2	--	--	--
TRAV 2 325-350	201	80	2.4	--	--	--
TRAV 2 350-375	201	70	1.8	--	--	--
TRAV 2 375-400	201	120	2.2	--	--	--
TRAV 2 400-425	201	180	3.0	--	--	--
TRAV 2 425-450	201	280	3.3	--	--	--
TRAV 2 450-475	201	180	2.6	--	--	--
TRAV 2 475-500	201	250	2.8	--	--	--
TRV-01	201	970	2.0	--	--	--
TRV-02	201	240	2.4	--	--	--
TRV-03	201	430	2.8	--	--	--
TRV-04	201	580	2.3	--	--	--
TRV-05	201	1000	6.2	--	--	--
TRV-06	201	2000	4.0	--	--	--
TRV-07	201	820	3.3	--	--	--
TRV-08	201	690	2.6	--	--	--
TRV-09	201	270	3.0	--	--	--
TRV-10	201	90	2.6	--	--	--
TRV-11	201	100	1.4	--	--	--
TRV-12	201	60	1.2	--	--	--
TRV-13	201	60	1.0	--	--	--
TRV-14	201	120	0.8	--	--	--
TRV-15	201	180	2.0	--	--	--
TRV-16	201	150	1.3	--	--	--
TRV-17	201	180	1.2	--	--	--
TRV-18	201	140	1.3	--	--	--
TRV-19	201	110	1.3	--	--	--

Certified by *Hart Bichler* .....



# Chemex Labs Ltd.

212 Brooksbank Ave.  
North Vancouver, B.C.  
Canada V7J 2C1

Analytical Chemists      Geochemists      Registered Assayers

Phone: (604) 984-0221  
Telex: 043-52597

## CERTIFICATE OF ANALYSIS

TO : WESTMIN RESOURCES LIMITED

P.O. Box 49066, The Centall Centre  
VANCOUVER, B.C.  
V7X 1C4

CERT. # : A5514913-002-A  
INVOICE # : 13514913  
DATE : 25-AUG-85  
P.O. # : RWL  
TASEKU

ATTN: H. MEADE      CC: RON LANE

Sample description	Prep code	Hg ppb	Sb ppm			
TRV-20	201	130	2.2	--	--	--
TRAV 4-01	201	100	2.0	--	--	--
TRAV 5 000-025	201	50	2.1	--	--	--
TRAV 5 025-050	201	40	0.3	--	--	--
TRAV 5 050-075	201	40	0.7	--	--	--
TRAV 5 075-100	201	50	0.3	--	--	--
TRAV 5 100-125	201	60	1.2	--	--	--
TRAV 5 125-150	201	70	1.7	--	--	--
TRAV 5 150-175	201	60	1.6	--	--	--
TRAV 5 175-200	201	60	1.4	--	--	--
TRAV 5 200-225	201	60	1.0	--	--	--
TRAV 5 225-250	201	190	1.4	--	--	--
TRAV 5 250-275	201	160	1.4	--	--	--
TRAV 5 275-300	201	80	10.6	--	--	--
TRAV 5 300-325	201	350	2.8	--	--	--
TRAV 5 325-350	201	320	3.0	--	--	--
TRAV 5 350-375	201	120	2.3	--	--	--
TRAV 5 375-400	201	80	3.2	--	--	--
TRAV 5 400-425	201	70	1.6	--	--	--
TRAV 5 425-450	201	60	1.6	--	--	--
TRAV 5 450-475	201	60	1.0	--	--	--
TRAV 5 475-500	201	120	0.3	--	--	--
TRAV 5 500-525	201	3300	9.4	--	--	--
TRAV 5 525-550	201	370	2.6	--	--	--
TRAV 5 550-575	201	100	0.3	--	--	--
TRAV 5 575-600	201	100	0.4	--	--	--
TRAV 5 600-625	201	100	0.6	--	--	--
TRAV 5 625-650	201	200	0.5	--	--	--
TRAV 5 650-675	201	430	0.4	--	--	--
TRAV 5 675-700	201	420	0.4	--	--	--
TRAV 5 700-725	201	140	0.1	--	--	--
TRAV 5 0750M	201	100	0.2	--	--	--
TRAV 5 0800M	201	670	3.0	--	--	--
TRAV 5 0850M	201	300	1.3	--	--	--
TRAV 5 0900M	201	1500	8.0	--	--	--
TRAV 5 0950M	201	320	3.6	--	--	--
TRAV 5 1000M	201	180	3.6	--	--	--
TRAV 5 1050M	201	220	3.3	--	--	--
TRAV 5 1100M	201	120	2.5	--	--	--
TRAV 5 1150M	201	80	1.0	--	--	--

Certified by *Hart Bickler* .....



# Chemex Labs Ltd.

Analytical Chemists    Geochemists    Registered Assayers

212 Brooksbank Ave.  
North Vancouver, B.C.  
Canada                    V7J 2C1  
Phone:    (604) 984-0221  
Telex:                    043-52597

## CERTIFICATE OF ANALYSIS

TO : WESTMIN RESOURCES LIMITED

P.O. Box 49066, The Bentall Centre  
VANCOUVER, B.C.  
V7X 1C4

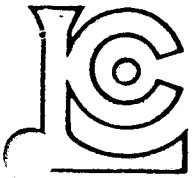
CERT. # : A8514913-003-A  
INVOICE # : I8514913  
DATE : 25-AUG-85  
P.O. # : RWL  
TASK#

ATTN: H. MEADE                    CC: RON LANE

Sample description	Prep code	Hg ppb	So ppm			
TRAV 5 1200M	201	110	1.3	--	--	--
TRAV 5 1250M	201	110	1.6	--	--	--
TRAV 5 1300M	201	410	1.2	--	--	--
TRAV 5 1400M	201	200	1.2	--	--	--
TRAV 5 1450M	201	150	1.4	--	--	--
TRAV 5 1500M	201	90	1.2	--	--	--
TRAV 5 1550M	201	170	1.6	--	--	--
TRAV 5 1600M	201	150	2.0	--	--	--
TRAV 5 1650M	201	410	2.4	--	--	--
TRAV 5 1700M	201	280	2.2	--	--	--
TRAV 5 1750M	201	170	2.0	--	--	--
TRAV 5 1800M	201	90	1.2	--	--	--
TRAV 5 1850M	201	50	1.2	--	--	--
TRAV 5 1900M	201	80	1.3	--	--	--
TRAV 5 1950M	201	90	1.6	--	--	--
TRAV 5 2000M	201	70	0.8	--	--	--
TRAV 5 2050M	201	80	0.6	--	--	--
TRAV 5 2100M	201	60	0.3	--	--	--
TRAV 5 2150M	201	80	1.4	--	--	--
TRAV 5 2200M	201	120	1.5	--	--	--
TRAV 5 2250M	201	130	1.6	--	--	--
TRAV 5 2300M	201	220	1.3	--	--	--
TRAV 5 2350M	201	190	2.2	--	--	--
TRAV 5 2400M	201	140	1.8	--	--	--
TRAV 5 2450M	201	70	1.2	--	--	--
TRAV 5 2500M	201	50	0.8	--	--	--
TRV 6-01	201	190	2.4	--	--	--
TRV 6-02	201	240	2.6	--	--	--
TRV 6-03	201	190	2.2	--	--	--
TRV 6-04	201	110	1.3	--	--	--
TRV 6-05	201	200	2.6	--	--	--
TRV 6-06	201	150	2.2	--	--	--
TRV 6-07	201	230	2.0	--	--	--
TRV 6-08	201	390	2.0	--	--	--
TRV 6-09	201	260	2.4	--	--	--
TRV 6-10	201	140	2.2	--	--	--
TRV 6-11	201	120	1.3	--	--	--
TRV 6-12	201	240	3.4	--	--	--
TRV 6-13	201	170	2.2	--	--	--
TRV 6-14	201	130	1.0	--	--	--

Certified by *Mark Richler*





# Chemex Labs Ltd.

Analytical Chemists      Geochemists      Registered Assayers

212 Brooksbank Ave.  
North Vancouver, B.C.  
Canada      V7J 2C1  
Phone: (604) 984-0221  
Telex: 043-52597

## CERTIFICATE OF ANALYSIS

TO : WESTMIN RESOURCES LIMITED

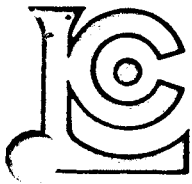
P.O. Box 49066, The Bentall Centre  
VANCOUVER, B.C.  
V7X 1C4

CERT. # : A8514913-004-A  
INVOICE # : 18514913  
DATE : 25-AUG-85  
P.O. # : RNL  
TASEKU

ATTN: H. MEADE      CC: RON LANE

Sample description	Prep code	Hg ppb	Sb ppm			
TRV 6-15	201	70	0.3	--	--	--
TRV 6-16	201	110	1.4	--	--	--
TRV 6-17	201	220	1.2	--	--	--
TRV 6-18	201	180	1.4	--	--	--
TRV 6-19	201	120	2.0	--	--	--
TRV 6-20	201	80	0.1	--	--	--
TRV 7-01	201	110	1.2	--	--	--
TRV 7-02	201	100	1.4	--	--	--
TRV 7-03	201	50	1.2	--	--	--
TRV 7-04	201	40	0.8	--	--	--
TRV 7-05	201	50	0.8	--	--	--
TRV 7-06	201	50	1.0	--	--	--
TRV 7-07	201	2200	16.5	--	--	--
TRV 7-08	201	360	6.0	--	--	--
TRV 7-09	201	50	0.9	--	--	--
TRV 7-10	201	50	1.0	--	--	--
TRV 7-11	201	40	1.1	--	--	--
TRV 7-12	201	40	0.5	--	--	--
TRV 7-13	201	40	0.6	--	--	--
TRV 7-14	201	70	1.0	--	--	--
TRV 7-15	201	310	1.3	--	--	--
TRV 7-16	201	130	1.6	--	--	--
TRV 7-17	201	130	1.6	--	--	--
TRV 7-18	201	170	1.3	--	--	--
TRV 7-19	201	120	1.0	--	--	--
TRV 7-20	201	100	0.9	--	--	--
TRV 8 050M	201	170	0.4	--	--	--
TRV 8 100M	201	230	0.5	--	--	--
TRV 8 150M	201	80	0.4	--	--	--
TRV 8 200M	201	170	0.5	--	--	--
TRV 8 250M	201	60	0.3	--	--	--
TRV 8 300M	201	50	0.5	--	--	--
TRV 8 350M	201	50	0.4	--	--	--
TRV 8 400M	201	30	0.6	--	--	--
TRV 8 450M	201	40	0.7	--	--	--
TRV 8 500M	201	40	0.6	--	--	--
TRV 8 550M	201	30	0.6	--	--	--
TRV 8 600M	201	40	0.6	--	--	--
TRV 8 650M	201	40	0.5	--	--	--
TRV 8 750M	201	50	0.6	--	--	--

Certified by *Heidi Buchler*



# Chemex Labs Ltd.

212 Brooksbank Ave.  
North Vancouver, B.C.  
Canada V7J 2C1

Analytical Chemists    Geochemists    Registered Assayers

Phone: (604) 984-0221  
Telex: 043-52597

CERTIFICATE OF ANALYSIS

TO : WESTMIN RESOURCES LIMITED

P.O. Box 49066, The Bentall Centre  
VANCOUVER, B.C.  
V7X 1C4

CERT. # : A8514913-005-A  
INVOICE # : I8514913  
DATE : 25-AUG-85  
P.O. # : RWL  
TASEKU

ATTN: H. MEADE                      CC: RON LANE

Sample description	Prep code	Hg ppb	So ppm
TRV 8 300M	201	50	0.8
TRV 8 850M	201	60	0.8
TRV 8 900M	201	50	0.2

--	--	--
--	--	--
--	--	--

*Handwritten signature*

Certified by .....

# Chemex Labs Ltd.

212 Brookbank Ave.  
North Vancouver, B.C.  
Canada V7J 2C1  
Telephone: (604) 984-0221  
Telex: 352597

Analytical Chemists • Geochemists • Registered Assayers

**FILE COPY**  
**(NOT FOR REMOVAL)**

## CERTIFICATE OF ANALYSIS

TO : WESTMIN RESOURCES LIMITED

CERT. # : A8515108-001-A  
INVOICE # : I8515108  
DATE : 28-AUG-85  
P.O. # : RWL  
TASEKO

P.O. Box 49066, The Bentall Centre  
VANCOUVER, B.C.  
V7X 1C4

ATTN: HARLAN MEADE CC: RON LANE

Sample description	Prep code	Hg ppb	Sb ppm			
A11	201	80	1.6	--	--	--
A12	201	100	2.0	--	--	--
A13	201	70	2.0	--	--	--
A14	201	60	2.0	--	--	--
A15	201	60	1.0	--	--	--
A16	201	70	1.0	--	--	--
A17	201	70	1.0	--	--	--
A18	201	50	0.8	--	--	--
A19	201	90	0.7	--	--	--
A20	201	130	0.6	--	--	--
301	201	100	0.6	--	--	--
302	201	170	1.0	--	--	--
303	201	140	1.1	--	--	--
304	201	150	1.0	--	--	--
305	201	70	0.6	--	--	--
306	201	90	0.8	--	--	--
307	201	110	2.2	--	--	--
308	201	60	0.4	--	--	--
309	201	100	1.1	--	--	--
B10	201	170	1.8	--	--	--
B11	201	100	1.1	--	--	--
B12	201	90	1.0	--	--	--
B13	201	210	1.0	--	--	--
B14	201	80	0.4	--	--	--
B15	201	80	1.6	--	--	--
B16	201	110	1.4	--	--	--
B17	201	120	1.5	--	--	--
C01	201	80	1.2	--	--	--
C02	201	70	1.0	--	--	--
C03	201	70	1.8	--	--	--
C04	201	80	1.4	--	--	--
C05	201	70	1.0	--	--	--
C06	201	80	1.0	--	--	--
C07	201	50	1.0	--	--	--
C08	201	80	1.1	--	--	--
C09	201	60	0.8	--	--	--
C10	201	100	2.8	--	--	--
C11	201	140	4.2	--	--	--
C12	201	60	0.9	--	--	--
C13	201	70	0.8	--	--	--

RECEIVED  
 28 AUG 1985  
 CHEMEX LABS LTD.



Certified by Hart Bichler



# Chemex Labs Ltd.

Analytical Chemists • Geochemists • Registered Assayers

212 Brooksbank Ave.  
North Vancouver, B.C.  
Canada V7J 2C1

Telephone: (604) 984-0221  
Telex: 043-52597

## CERTIFICATE OF ANALYSIS

**FILE COPY**  
(NOT FOR REMOVAL)

TO : WESTMIN RESOURCES LIMITED

P.O. Box 49066, The Bentall Centre  
VANCOUVER, B.C.  
V7X 1C4

CERT. # : A8515108-002-A  
INVOICE # : I8515108  
DATE : 28-AUG-85  
P.O. # : RWL  
TASEKO

ATTN: HARLAN MEADE CC: RON LANE

Sample description	Prep code	Hg ppb	Sb ppm			
C14	201	50	1.2	--	--	--
C15	201	120	1.0	--	--	--
C16	201	120	0.8	--	--	--
C17	201	110	0.8	--	--	--
C18	201	250	1.0	--	--	--
C19	201	240	1.2	--	--	--
C20	201	230	0.8	--	--	--
C21	201	210	0.7	--	--	--
C22	201	170	0.8	--	--	--
C23	201	50	1.4	--	--	--
C24	201	70	2.0	--	--	--
C25	201	50	2.8	--	--	--
C26	201	40	2.4	--	--	--
C27	201	40	2.4	--	--	--
C28	201	90	2.8	--	--	--
C29	201	60	1.0	--	--	--
F01	201	150	2.4	--	--	--
F02	201	70	5.0	--	--	--
F03	201	130	8.0	--	--	--
F04	201	220	15.6	--	--	--
F05	201	100	3.0	--	--	--
F06	201	100	1.4	--	--	--
F07	201	70	3.2	--	--	--
F08	201	70	2.0	--	--	--
F09	201	50	3.6	--	--	--
F10	201	90	4.2	--	--	--
F11	201	50	1.6	--	--	--
F12	201	50	1.0	--	--	--
F13	201	40	1.2	--	--	--
F14	201	30	1.0	--	--	--
F15	201	30	0.8	--	--	--
F16	201	40	0.4	--	--	--
F17	201	90	0.8	--	--	--
F18	201	70	0.8	--	--	--
F19	201	110	0.8	--	--	--
F20	201	60	0.3	--	--	--

ANALYSIS BY: [Signature]  
DATE: [Date]



Certified by Hart Bichler



# Chemex Labs Ltd.

Analytical Chemists • Geochemists • Registered Assayers

212 Brooksbank Ave.  
North Vancouver, B.C.  
Canada V7J 2C1  
Telephone: (604) 984-0221  
Telex: 043-52597

FILE  
(NOT FOR FILING)

## CERTIFICATE OF ANALYSIS

TO : WESTMIN RESOURCES LIMITED

P.O. Box 49060, The Bentall Centre  
VANCOUVER, B.C.  
V7X 1C4

CERT. # : A8515299-001-A  
INVOICE # : I8515299  
DATE : 29-AUG-85  
P.O. # : RWL  
TASEKO

ATTN: HARLAN MEADE CC: RON LANE

Sample description	Prep code	Hg ppb	Sb ppm			
C30	201	50	1.0	--	--	--
C31	201	60	1.2	--	--	--
C32	201	90	2.0	--	--	--
C33	201	60	0.8	--	--	--
C34	201	90	1.1	--	--	--
C35	201	70	1.0	--	--	--
C36	201	50	0.8	--	--	--
C37	201	60	1.0	--	--	--
C38	201	340	18.4	--	--	--
C39	201	100	14.0	--	--	--
C40	201	60	1.6	--	--	--
C41	201	60	0.6	--	--	--
C42	201	40	1.6	--	--	--
D01	201	80	2.0	--	--	--
D02	201	120	3.0	--	--	--
D03	203	120	3.0	--	--	--
D04	201	60	1.2	--	--	--
D05	201	80	1.0	--	--	--
D06	201	90	0.9	--	--	--
D07	201	130	0.8	--	--	--
D08	201	90	0.5	--	--	--
D09	201	230	1.2	--	--	--
E01	201	40	1.6	--	--	--
E02	201	60	1.0	--	--	--
E03	201	40	0.6	--	--	--
E04	201	90	1.2	--	--	--
E05	201	60	1.0	--	--	--
E06	201	80	1.0	--	--	--
G01	201	200	0.8	--	--	--
G02	201	110	1.3	--	--	--
G03	203	100	0.5	--	--	--
G04	201	70	2.0	--	--	--
G05	201	100	0.9	--	--	--
G06	201	70	2.0	--	--	--
G07	201	80	1.3	--	--	--
G08	201	90	1.4	--	--	--
G09	201	70	1.6	--	--	--
G10	201	50	1.2	--	--	--
G11	201	120	1.5	--	--	--
G12	201	60	1.7	--	--	--

Certified by Hart Bichler





# Chemex Labs Ltd.

212 Brooksbank Ave.  
North Vancouver, B.C.  
Canada V7J 2C1

Analytical Chemists • Geochemists • Registered Assayers

Telephone (604) 984-0221  
Telex 043-52597

## CERTIFICATE OF ANALYSIS

**FILE COPY**

TO : WESTMIN RESOURCES LIMITED

P.O. Box 49066, The Bentall Centre  
VANCOUVER, B.C.  
V7X 1C4

CERT. # (NOT FOR FILING) : 48515299-002-A  
INVOICE # : 18515299  
DATE : 29-AUG-85  
P.O. # : RWL  
TASEKO

ATTN: HARLAN MEADE CC: RON LANE

Sample description	Prep code	Hg ppb	Sb ppm			
G13	201	60	1.2	--	--	--
G14	201	60	2.2	--	--	--
G15	201	60	0.6	--	--	--
G16	201	40	1.0	--	--	--
G17	201	40	0.4	--	--	--
G18	201	40	0.2	--	--	--
G19	201	80	0.9	--	--	--
G20	201	40	0.5	--	--	--
G21	201	50	0.3	--	--	--
G22	201	60	0.5	--	--	--
G23	201	40	0.6	--	--	--
H01	201	40	0.5	--	--	--
H02	201	50	0.4	--	--	--
H03	201	50	0.3	--	--	--
H04	201	50	0.4	--	--	--
H05	201	50	0.2	--	--	--
H06	201	50	0.4	--	--	--
H07	201	40	0.3	--	--	--
H08	201	40	0.3	--	--	--
H09	201	50	0.2	--	--	--
H10	201	50	0.2	--	--	--
H11	201	40	0.6	--	--	--
H12	201	70	0.2	--	--	--
H13	201	60	0.2	--	--	--
H14	201	70	0.3	--	--	--
H15	201	70	0.6	--	--	--
H16	201	90	1.4	--	--	--
H17	201	80	1.2	--	--	--
H18	201	110	1.4	--	--	--
H19	201	70	1.0	--	--	--
H20	201	70	0.9	--	--	--
H21	201	80	1.2	--	--	--
H22	201	50	0.5	--	--	--
H23	201	50	0.7	--	--	--
H24	201	70	0.6	--	--	--
I01	201	70	0.1	--	--	--
I02	201	70	0.1	--	--	--
I03	201	50	0.1	--	--	--
I04	201	40	0.2	--	--	--
I05	201	30	0.1	--	--	--



Certified by *Hart Bichler*



# Chemex Labs Ltd.

Analytical Chemists • Geochemists • Registered Assayers

212 Brooksbank Ave.  
North Vancouver, B.C.  
Canada V7J 2C1  
Telephone: (604) 984-0221  
Telex: 043-52597

**FILE COPY**  
**(NOT FOR REMOVAL)**

## CERTIFICATE OF ANALYSIS

TO : WESTMIN RESOURCES LIMITED

P.O. Box 49066, The Bentall Centre  
VANCOUVER, B.C.  
V7X 1C4

CERT. # : A8515299-003-A  
INVOICE # : I8515299  
DATE : 29-AUG-85  
P.O. # : RWL  
TASEKD

ATTN: HARLAN MEADE CC: RON LANE

Sample description	Prep code	Hg ppb	Sb ppm			
J01	201	40	0.7	--	--	--
J02	201	60	0.2	--	--	--
J03	201	30	0.2	--	--	--
J04	201	30	0.1	--	--	--
J05	201	30	0.1	--	--	--
K02	201	60	0.4	--	--	--
K03	201	60	0.5	--	--	--
K04	201	90	0.6	--	--	--
K05	201	140	0.7	--	--	--
K06	201	160	1.3	--	--	--
K07	201	100	0.9	--	--	--
K08	201	100	1.0	--	--	--
K09	201	70	0.9	--	--	--
K10	201	80	0.5	--	--	--
K11	201	150	0.4	--	--	--
K12	201	60	0.3	--	--	--
K13	201	130	1.0	--	--	--
K14	201	140	0.2	--	--	--
K15	201	50	0.5	--	--	--
K16	201	70	0.8	--	--	--
K17	201	90	0.5	--	--	--
K18	201	80	0.6	--	--	--
K19	201	120	0.9	--	--	--
K20	201	30	0.1	--	--	--
K21	201	40	0.1	--	--	--
K22	201	110	2.0	--	--	--
K23	201	50	0.4	--	--	--
K24	201	170	0.5	--	--	--
K25	201	90	0.4	--	--	--
K26	201	50	0.4	--	--	--
K27	201	50	0.5	--	--	--
K28	201	50	0.6	--	--	--
K29	201	70	1.0	--	--	--
K30	201	60	0.8	--	--	--
K31	201	60	0.8	--	--	--
K32	201	50	0.6	--	--	--
K33	201	60	0.5	--	--	--
K34	201	70	0.5	--	--	--
K35	201	100	0.5	--	--	--
K36	201	80	1.4	--	--	--

Certified by Hart Bichler





# Chemex Labs Ltd.

Analytical Chemists • Geochemists • Registered Assayers

212 Brooksbank Ave.  
North Vancouver, B.C.  
Canada V7J 2C1

Telephone (604) 984-0221  
Telex 043-52597

## CERTIFICATE OF ANALYSIS

**FILE COPY**  
**(NOT FOR REMOVAL)**

TO : WESTMIN RESOURCES LIMITED

P.O. Box 49066, The Bentall Centre  
VANCOUVER, B.C.  
V7X 1C4

CERT. # : A6515299-004-A  
INVOICE # : 18515299  
DATE : 29-AUG-85  
P.O. # : RWL  
TASEKO

ATTN: HARLAN MEADE CC: RON LANE

Sample description	Prep code	Hg ppb	Sr ppm			
K37	201	130	1.0			
K38	201	100	0.4			
K39	201	70	0.4			
K40	201	60	0.4			
K41	201	60	0.4			
K42	201	40	0.2			
K43	201	40	0.4			
K44	201	70	1.5			
K45	201	50	0.4			
K46	201	50	0.3			
K1-02	203	50	0.6			
K1-03	201	60	0.3			
K1-04	203	140	0.4			
K1-05	201	80	0.1			
K1-06	201	60	0.3			
K1-07	201	50	0.3			
K1-08	203	110	0.8			
K1-09	201	80	0.2			
K1-10	201	60	1.3			
K1-11	201	50	0.4			
K1-12	201	50	0.4			
K1-13	203	60	0.4			
K1-14	203	110	0.6			
K1-15	201	170	1.2			
K1-16	201	120	1.5			
K1-17	201	120	1.4			
K1-18	201	60	0.2			
K1-19	201	50	0.4			
K1-20	201	50	0.4			
K1-21	201	50	0.4			
K1-22	201	50	0.3			
K1-23	203	40	0.3			
K1-24	203	30	6.6			
K1-25	201	40	0.4			
K1-26	201	50	0.1			
K1-27	201	40	0.4			
K1-28	201	70	0.5			
K1-29	201	40	0.5			
K1-30	201	50	0.6			
K1-31	201	60	1.0			



Certified by Hart Bichler





# Chemex Labs Ltd.

Analytical Chemists • Geochemists • Registered Assayers

212 Brooksbank Ave.  
North Vancouver, B.C.  
Canada V7J 2C1  
Telephone: (604) 984-0221  
Telex: 043-52597

**FILE COPY**  
**(NOT FOR REMOVAL)**

## CERTIFICATE OF ANALYSIS

TO : WESTMIN RESOURCES LIMITED

P.O. Box 49066, The Bentall Centre  
VANCOUVER, B.C.  
V7X 1C4

CERT. # : A8515299-005-A  
INVOICE # : I8515299  
DATE : 29-AUG-85  
P.O. # : RWL  
TASEKU

ATTN: HARLAN MEADE CC: RON LANE

Sample description	Prep code	Hg ppb	Sb ppm			
K1-32	201	210	1.6	--	--	--
K1-33	201	70	0.8	--	--	--
K1-34	201	40	0.6	--	--	--
K1-35	203	50	0.7	--	--	--
K1-36	201	80	0.6	--	--	--
K1-37	201	90	0.3	--	--	--
K1-38	203	230	0.7	--	--	--
K1-39	203	110	3.2	--	--	--
K1-40	201	430	0.3	--	--	--
K1-41	201	130	0.2	--	--	--
K1-42	203	70	0.4	--	--	--
K1-43	201	70	0.4	--	--	--
K1-44	201	60	0.5	--	--	--
K1-45	201	60	0.2	--	--	--
K1-46	203	60	0.2	--	--	--
K1-47	201	60	0.2	--	--	--
K2-02	201	130	1.4	--	--	--
K2-03	201	70	1.2	--	--	--
K2-04	201	30	1.1	--	--	--
K2-05	201	30	0.4	--	--	--
K2-06	201	30	0.4	--	--	--
K2-07	201	30	0.5	--	--	--
K2-08	201	200	0.5	--	--	--
K2-09	201	210	0.6	--	--	--
K2-10	201	60	0.4	--	--	--
K2-11	201	230	2.0	--	--	--
K2-12	201	160	3.0	--	--	--
K2-13	201	100	1.1	--	--	--
K2-14	201	60	1.4	--	--	--
K2-15	201	840	3.2	--	--	--
K2-16	201	120	1.2	--	--	--
K2-17	201	310	1.1	--	--	--
K2-18	201	440	0.8	--	--	--
K2-19	201	17000	0.9	--	--	--
K2-20	201	200	1.4	--	--	--
K2-21	201	160	1.2	--	--	--
K2-22	201	160	2.1	--	--	--
K2-23	201	80	1.7	--	--	--
K2-24	201	90	1.8	--	--	--
K2-25	201	80	2.2	--	--	--



Certified by Hart Bichler .....



# Chemex Labs Ltd.

Analytical Chemists • Geochemists • Registered Assayers

212 Brooksbank Ave.  
North Vancouver, B.C.  
Canada V7J 2C1  
Telephone: (604) 984-0221  
Telex: 043-52597

**FILE COPY**  
**(NOT FOR REMOVAL)**

## CERTIFICATE OF ANALYSIS

TO : WESTMIN RESOURCES LIMITED

P.O. Box 49066, The Bentall Centre  
VANCOUVER, B.C.  
V7X 1C4

CERT. # : A8515299-006-A  
INVOICE # : I6515299  
DATE : 29-AUG-85  
P.O. # : RWL  
TASEKO

ATTN: HARLAN MEADE CC: RON LANE

Sample description	Prep code	Hg ppb	Sr pon			
K2-26	201	110	2.2	--	--	--
K2-27	201	100	2.1	--	--	--
K2-28	201	250	7.6	--	--	--
K2-29	201	250	7.6	--	--	--
K2-30	201	160	2.8	--	--	--
K2-31	201	190	1.3	--	--	--
K2-32	201	100	1.5	--	--	--
K2-33	201	120	1.6	--	--	--
K2-34	201	430	1.0	--	--	--
K2-35	201	180	1.4	--	--	--
K2-36	201	150	7.4	--	--	--
K2-37	201	60	1.2	--	--	--
K2-38	201	50	1.2	--	--	--
K2-39	201	240	3.0	--	--	--
K2-40	201	90	2.4	--	--	--
K2-41	203	90	4.4	--	--	--
K2-42	201	150	10.0	--	--	--
K2-43	201	450	5.4	--	--	--
K2-44	201	1400	9.4	--	--	--
K2-45	201	1500	9.4	--	--	--
K2-46	201	220	2.6	--	--	--
K2-47	201	560	6.4	--	--	--
K2-48	201	560	5.6	--	--	--
K2-49	201	100	0.5	--	--	--



Certified by *Hart Bichler*



# Chemex Labs Ltd

Analytical Chemists • Geochemists • Registered Assayers

RECEIVED  
SEP 6 1985

212 Brooksbank Ave.  
North Vancouver, B.C.  
Canada V7J2C1

Telephone: 604-984-0221  
Telex: 043-52597

## CERTIFICATE OF ANALYSIS

WESTMIN RESOURCES LIMITED  
MINING DIVISION  
NOT FOR REMOVAL

TO : WESTMIN RESOURCES LIMITED

P.O. Box 49066, The Bentall Centre  
VANCOUVER, B.C.  
V7X 1C4

MERT. # : A8515681-001-A  
INVOICE # : I8515681  
DATE : 6-SEP-85  
P.O. # : RNL  
TASEKJ

CC: RON LANE

Sample description	Prep code	Hg ppb	So ppm			
K3-02	201	150	3.4	--	--	--
K3-03	201	820	4.2	--	--	--
K3-04	201	110	2.6	--	--	--
K3-05	201	100	2.2	--	--	--
K3-06	201	60	1.4	--	--	--
K3-07	201	60	1.2	--	--	--
K3-08	201	80	1.0	--	--	--
K3-09	201	60	0.8	--	--	--
K3-10	201	80	0.7	--	--	--
K3-11	201	60	0.6	--	--	--
K3-12	201	110	1.0	--	--	--
K3-13	201	110	1.4	--	--	--
K3-14	201	260	2.4	--	--	--
K3-15	201	280	1.5	--	--	--
K3-16	201	280	1.3	--	--	--
K3-17	201	130	1.0	--	--	--
K3-18	201	110	0.8	--	--	--
K3-19	201	80	0.9	--	--	--
K3-20	201	80	0.8	--	--	--
K3-21	201	110	1.5	--	--	--
K3-22	201	70	1.5	--	--	--
K3-23	201	80	2.2	--	--	--
K3-24	201	80	1.5	--	--	--
K3-25	201	50	0.9	--	--	--
K3-26	201	70	1.0	--	--	--
K3-27	201	50	0.8	--	--	--
K3-28	201	70	1.0	--	--	--
K3-29	201	90	1.5	--	--	--
K3-30	201	60	0.9	--	--	--
K3-31	201	60	0.9	--	--	--
K3-32	201	230	1.2	--	--	--
K3-33	201	770	1.4	--	--	--
K3-34	201	120	2.2	--	--	--
K3-35	201	2500	3.0	--	--	--
K3-36	201	320	1.0	--	--	--
K3-37	201	300	1.6	--	--	--
K3-38	201	390	1.5	--	--	--
K3-39	201	1200	1.8	--	--	--
K3-40	201	630	2.0	--	--	--
K4-02	201	130	2.6	--	--	--

Certified by Hart Buchler





# Chemex Labs Ltd.

Analytical Chemists • Geochemists • Registered Assayers

212 Brooksbank Ave.  
North Vancouver, B.C.  
Canada V7J 2C1  
Telephone: (604) 984-0221  
Telex: 043-52597

## CERTIFICATE OF ANALYSIS

RECEIVED  
SEP 6 1985  
FILE COPY  
WESTMIN RESOURCES LIMITED  
MINING DIVISION  
48515681-002-A

TO : WESTMIN RESOURCES LIMITED

P.O. Box 49066, The Bentall Centre  
VANCOUVER, B.C.  
V7X 1C4

DATE : 6-SEP-85  
P.O. # : RWL  
TASEKO

CC: RON LANE

Sample description	Prep code	Hg ppb	Sb ppm			
K4-03	201	80	2.4	--	--	--
K4-04	201	70	1.8	--	--	--
K4-05	201	120	0.8	--	--	--
K4-06	201	160	1.7	--	--	--
K4-07	201	60	0.6	--	--	--
K4-08	201	50	0.4	--	--	--
K4-09	203	50	0.2	--	--	--
K4-10	201	240	1.5	--	--	--
K4-11	201	70	0.8	--	--	--
K4-12	201	220	1.4	--	--	--
K4-13	201	130	0.8	--	--	--
K4-14	201	200	1.2	--	--	--
K4-15	201	160	1.8	--	--	--
K4-16	201	180	0.9	--	--	--
K4-17	201	60	0.8	--	--	--
K4-18	201	50	0.4	--	--	--
K4-19	201	60	0.5	--	--	--
K4-20	203	250	1.6	--	--	--
K4-21	201	250	2.4	--	--	--
K4-22	201	300	2.2	--	--	--
K4-23	201	140	2.0	--	--	--
K4-24	203	90	1.4	--	--	--
K4-25	201	70	1.4	--	--	--
K4-26	201	50	1.2	--	--	--
K4-27	201	50	0.9	--	--	--
K4-28	201	80	1.8	--	--	--
K4-29	203	30	1.0	--	--	--
K4-30	201	100	1.2	--	--	--
TRV10-01	201	90	7.0	--	--	--
TRV10-02	201	40	1.8	--	--	--
TRV10-03	201	200	15.0	--	--	--
TRV10-04	201	620	21.0	--	--	--
TRV10-05	201	110	4.0	--	--	--
TRV10-06	201	120	13.4	--	--	--
TRV10-07	201	60	3.6	--	--	--
TRV10-08	201	60	2.4	--	--	--
TRV10-09	201	120	4.2	--	--	--
TRV10-10	201	130	7.4	--	--	--
TRV10-11	201	50	1.2	--	--	--
TRV10-12	201	270	54.0	--	--	--

Hart Buchler

Certified by .....





# Chemex Labs Ltd

Analytical Chemists • Geochemists • Registered Assayers

RECEIVED  
SEP 6 1985

212 Brooksbank Ave.  
North Vancouver, B.C.  
Canada V7J 2C1

Telephone (604) 984-0221  
Fax: 043-52597

## CERTIFICATE OF ANALYSIS

WESTMIN RESOURCES LIMITED  
MINING DIVISION (NOT FOR REMOVAL)

TO : WESTMIN RESOURCES LIMITED

P.O. Box 49066, The Bentall Centre  
VANCOUVER, B.C.  
V7X 1C4

INVOICE # : 48515681-003-A  
INVOICE # : 18515681  
DATE : 6-SEP-85  
P.O. # : RWL  
TASEKD

CC: RON LANE

Sample description	Prep code	Hg ppb	So ppm			
TRV10-13	201	100	5.2	--	--	--
TRV10-14	201	160	16.0	--	--	--
TRV10-15	201	50	6.4	--	--	--
TRV10-16	201	80	6.0	--	--	--
TRV10-17	201	130	210.0	--	--	--
TRV10-18	201	60	6.0	--	--	--
TRV10-19	203	200	47.0	--	--	--
TRV10-20	201	260	56.0	--	--	--
TRV10-21	201	180	59.0	--	--	--
TRV10-22	201	170	34.0	--	--	--
TRV10-23	201	130	21.0	--	--	--
TRV10-24	201	160	25.0	--	--	--
TRV10-25	201	250	25.0	--	--	--
TRV10-26	201	140	26.0	--	--	--
TRV10-27	201	840	63.0	--	--	--
TRV10-28	201	850	80.0	--	--	--
TRV10-29	201	190	7.4	--	--	--
TRV10-30	201	90	2.0	--	--	--
TRV10-31	201	60	1.4	--	--	--
TRV10-32	201	170	3.6	--	--	--
TRV10-33	203	60	1.0	--	--	--
TRV10-34	201	70	0.9	--	--	--
TRV11-01	201	110	1.0	--	--	--
TRV11-02	201	50	1.0	--	--	--
TRV11-03	201	70	1.3	--	--	--
TRV11-04	201	60	2.0	--	--	--
TRV11-05	201	210	5.4	--	--	--
TRV11-06	201	60	2.3	--	--	--
TRV11-07	201	140	2.2	--	--	--
TRV11-08	201	70	2.3	--	--	--
TRV11-09	201	720	5.4	--	--	--
TRV11-10	201	320	32.0	--	--	--
TRV11-11	201	140	1.2	--	--	--
TRV11-12	201	100	0.8	--	--	--
TRV11-13	201	60	0.4	--	--	--
TRV11-14	201	50	0.4	--	--	--
TRV11-15	201	50	1.0	--	--	--



Certified by Hart Bichler



# Chemex Labs Ltd.

212 Brooksbank Ave.  
North Vancouver, B.C.  
Canada V7J 2C1  
Phone: (604) 984-0221  
Telex: 043-52597

Analytical Chemists • Geochemists • Registered Assayers

**FILE COPY**  
(NOT FOR REMOVAL)

## CERTIFICATE OF ANALYSIS

TO : WESTMIN RESOURCES LIMITED

P.O. Box 49066, The Bentall Centre  
VANCOUVER, B.C.  
V7X 1C4

CERT. # : A8515854-001-A  
INVOICE # : I8515854  
DATE : 11-SEP-85  
P.O. # : RW  
TASEKO

ATTN: HARLAN MEADE      CC: RON LANE

Sample description	Prep code	Hg ppb	Sd ppm
R 01	201	90	0.6
R 02	201	70	1.2
R 03	201	60	1.2
R 04	201	60	0.6
R 05	201	70	0.3
R 06	201	70	0.9
R 07	201	60	0.6
R 08	201	60	0.1
R 09	201	60	0.2
R 10	201	60	0.6
R 11	201	50	0.2
R 12	201	50	0.1
R 13	201	50	0.1
R 14	201	40	0.1
R 15	201	50	0.1
R 16	201	60	1.2
R 17	201	60	0.4
R 18	201	60	0.4
R 19	201	50	0.6
R 20	203	80	0.1
R 21	201	40	0.8
R 22	203	50	0.1
R 23	201	50	0.1
R 24	201	80	0.1
R 25	201	60	0.1
R 26	201	50	0.9
R 27	201	50	0.1
R 28	201	30	0.8
R 29	201	40	0.2
R 30	201	40	0.1
R 31	203	220	0.6
R 32	203	260	0.2
R 33	203	60	0.9
R 34	201	80	0.1
R 35	201	50	0.1
R 36	201	40	0.1

**RECEIVED**  
SEP 13 1985  
WESTMIN RESOURCES LIMITED  
MINING DIVISION

Certified by Hart Bichler



# Chemex Labs Ltd.

Analytical Chemists • Geochemists • Registered Assayers

212 Brooksbank Ave.  
North Vancouver, B.C.  
Canada V7J 2C1  
Telephone: (604) 984-0221  
Telex: 043-52597

## CERTIFICATE OF ANALYSIS

TO : WESTMIN RESOURCES LIMITED

P.O. Box 49066, The Bentall Centre  
VANCOUVER, B.C.  
V7X 1C4

CERT. # : A8516426-001-A  
INVOICE # : I8516426  
DATE : 25-SEP-85  
P.O. # : RWL  
TASEKD

ATTN: H. MEADE CC: RON LANE

Sample description	Prep code	Hg ppb	Sr ppm			
P-01	201	14000	0.3	--	--	--
P-02	201	6100	1.4	--	--	--
P-03	201	110	1.2	--	--	--
P-04	201	90	0.3	--	--	--
P-05	201	180	0.6	--	--	--
P-06	201	100	0.4	--	--	--
P-07	201	60	0.6	--	--	--
P-08	201	140	1.2	--	--	--
P-09	201	150	1.0	--	--	--
P-10	201	390	3.3	--	--	--
P-11	201	70	0.3	--	--	--
P-12	201	70	0.5	--	--	--
P-13	201	40	0.2	--	--	--
P-14	201	100	0.4	--	--	--
P-15	201	240	1.6	--	--	--
P-16	201	160	2.2	--	--	--
P-17	201	370	3.0	--	--	--
P-18	201	5500	16.5	--	--	--
P-19	201	90	0.4	--	--	--
P-20	201	190	2.0	--	--	--
P-21	201	290	3.4	--	--	--
P-22	201	80	1.2	--	--	--
P-23	201	210	2.0	--	--	--
P-24	201	230	0.1	--	--	--
P-25	201	90	1.4	--	--	--
P-26	201	70	0.6	--	--	--
P-27	201	40	0.6	--	--	--
P-28	201	140	0.4	--	--	--
P-29	201	80	0.2	--	--	--
P-30	201	130	1.2	--	--	--
P-31	201	50	0.4	--	--	--
P-32	201	50	1.0	--	--	--
P-33	201	30	1.0	--	--	--
P-34	201	50	1.0	--	--	--
P-35	201	40	2.0	--	--	--
P-36	201	120	0.4	--	--	--
P-37	201	60	0.6	--	--	--
P-38	201	60	1.0	--	--	--
P-39	201	90	3.3	--	--	--
P-40	201	70	1.4	--	--	--



Certified by Hart Bichler



# Chemex Labs Ltd.

Analytical Chemists • Geochemists • Registered Assayers

212 Brooksbank Ave.  
North Vancouver, B.C.  
Canada V7J 2C1

Telephone: (604) 984-0221  
Telex: 043-52597

## CERTIFICATE OF ANALYSIS

TO : WESTMIN RESOURCES LIMITED

P.O. Box 49066, The Bentall Centre  
VANCOUVER, B.C.  
V7X 1C4

CERT. # : A8516475-002-A  
INVOICE # : 18516425  
DATE : 25-SEP-85  
P.O. # : RWL  
TASEKO

ATTN: H. MEADE CC: RON LANE

Sample description	Prep code	Hg ppb	Sb ppm
P-41	201	50	3.2
P-42	201	70	1.0
R-01	201	140	3.2

--	--	--
--	--	--
--	--	--



Certified by Hart Bickler





# Chemex Labs Ltd.

Analytical Chemists • Geochemists • Registered Assayers

212 Brookbank Ave.  
North Vancouver, B.C.  
Canada V7J 2C1

Phone: (604) 984-0221

Telex: 043-62597

## CERTIFICATE OF ANALYSIS

TO : WESTMIN RESOURCES LIMITED

P.O. Box 49060, The Bentall Centre  
VANCOUVER, B.C.  
V7X 1C4

CERT. # : A8517068-001-A

INVOICE # : I8517068

DATE : 9-OCT-85

P.O. # : RWL

TASEKO

ATTN: RON LANE

Sample description	Prep code	Hg ppb	Su ppm			
R-37	201	70	0.3	--	--	--
R-38	201	40	0.1	--	--	--
R-39	201	40	0.3	--	--	--
R-40	201	30	0.4	--	--	--
R-41	201	30	0.6	--	--	--
R-42	201	60	1.0	--	--	--
R-43	201	30	0.9	--	--	--
R-44	201	30	0.3	--	--	--
R-45	201	30	0.4	--	--	--
R-46	201	40	1.4	--	--	--
R-47	201	40	1.2	--	--	--
R-48	201	40	2.2	--	--	--
R-49	201	50	0.7	--	--	--
R-50	201	30	0.4	--	--	--
R-51	201	20	0.4	--	--	--
R-52	201	50	3.4	--	--	--
R-53	201	40	1.0	--	--	--
R-54	201	50	1.2	--	--	--
R-55	201	40	2.0	--	--	--
R-56	201	30	1.2	--	--	--
R-57	201	40	1.3	--	--	--
R-58	201	50	1.6	--	--	--
R-59	201	30	0.3	--	--	--
R-60	201	20	0.1	--	--	--
R-61	201	30	0.6	--	--	--
R-62	201	50	1.4	--	--	--
R-63	201	50	0.5	--	--	--
R-64	201	40	0.2	--	--	--
R-65	201	40	0.2	--	--	--
R-66	201	50	0.3	--	--	--
R-67	201	30	0.3	--	--	--
R-68	201	30	0.1	--	--	--
R-69	201	40	0.9	--	--	--
R-70	201	40	0.3	--	--	--
R-71	201	50	0.4	--	--	--
R-72	201	30	0.2	--	--	--
R-73	201	40	0.3	--	--	--
R-74	201	40	0.4	--	--	--
R-75	201	40	0.2	--	--	--
R-76	201	30	0.4	--	--	--

Certified by Hart Bichler



# Chemex Labs Ltd.

Analytical Chemists • Geochemists • Registered Assayers

212 Brooksbank Ave.  
North Vancouver, B.C.  
Canada V7J 2C1  
Phone: (604) 984-0221  
Telex: 043-52597

## CERTIFICATE OF ANALYSIS

TO : WESTMIN RESOURCES LIMITED

P.O. Box 49066, The Bentall Centre  
VANCOUVER, B.C.  
V7X 1C4

CERT. # : A3517063-002-A  
INVOICE # : I3517063  
DATE : 9-OCT-85  
P.O. # : RWL  
TASK# :

ATTN: RON LANE

Sample description	Prep code	Hg ppb	Se ppm			
R-77	201	60	0.2	--	--	--
R-78	201	50	0.4	--	--	--
R-79	201	40	0.2	--	--	--
R-80	201	50	0.4	--	--	--
R-81	201	40	0.4	--	--	--
R-82	201	40	0.2	--	--	--
R-83	201	60	0.3	--	--	--
R-84	201	70	0.2	--	--	--
R-85	201	50	0.2	--	--	--

Certified by *Hart Bickler*