

86-331-14947

ASSESSMENT REPORT

on the

Bobbie 1, Anton 2, Anton 3, North
claims of the Anton Silver Group

for

SILVERA RESOURCES INC.
MAY 1986

FILMED

GEOLOGICAL BRANCH
ASSESSMENT REPORT

14,947



JS

GEOCHEMICAL SOIL SURVEY ON THE
BOBBIE 1, ANTON 2, ANTON 3, NORTH
CLAIMS OF THE ANTON SILVER GROUP

SLOCAN MINING DIVISION

Latitude $50^{\circ} 55' 04''$
Longitude $117^{\circ} 25' 13.6''$

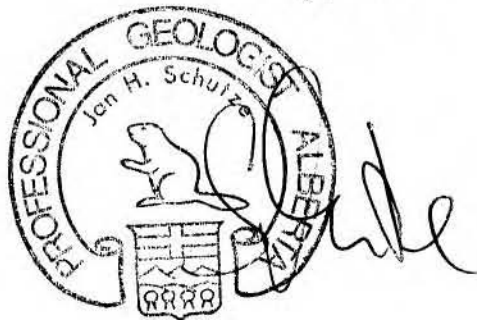
N.T.S. ~~82-K-3, 4~~ 82K/3W, 82K/4E

~~Owned by~~
Operator: SILVERA RESOURCES INC.
~~and~~
Owner: ALEX STREBCHUK

ANTON SILVER PROJECT

J. H. Schutze, P. Geol.

May, 1986



Introduction

The location of the Anton Silver Property is adjacent to Shannon Creek near the north west corner of Slocan Lake (See map 1). It is just west of Provincial Highway 6 about 30 kilometers south east of Nakusp, British Columbia.

Topography is rugged with total relief from Slocan Lake to nearby peaks being about 1700 meters. Much of the property is covered by mature forest.

Access to the property is gained by good gravel logging roads along Shannon and Wragge Creeks.

A summary of claim data is shown in Table 1.

Currently, the property is being extensively explored for lode gold deposits and an extensive field program for the 1986 field season's in progress.

48

Claim Data

TABLE I

<u>CLAIM #</u>	<u>NO. OF UNITS</u>	<u>RECORD #</u>	<u>DUE DATE</u>	<u>OWNER</u>
Bobbie 1	12	2032	July 8, 1986	A. Strebchuk
Anton 3	8	936	Sept. 1988	"
Anton 2	10	935	Sept. 1987	"
North	6	1947	May 27, 1986	"

OPTIONEE: SILVERA RESOURCES INC.

LB

Previous work and object of present work

The geochemical project of May, 1986 involved the analysis of some 226 soil samples for Au content. The soil samples had been previously collected in a joint venture between Cyprus-Anvil Mining Corporation and Alex Strebchuk as part of an exploration program for Mo in the area (ref. Min. Res. Br. report number 8402). During the course of this program, the soil samples were analysed for Cu, Pb, Zn, and Ag. As it is the intention of Silvera Resources Inc. to explore the property for Au mineralization it was expediant to run a selected number of the previously collected soil samples for Au content. The location of the samples along with their respective Au concentrations is shown in map 2.

LP

Sampling & Analytical Techniques of the Geochemical Survey

The 1980 soil samples were taken from the B horizon generally 15-20 centimeters from the surface. Grid lines were established at 200 meter intervals by compass and topofil chain off a cut and picketed baseline.

Samples were collected in wet strenght Kraft paper bags, air dried and forwarded to Kamloops Research and Assay Laboratories in Kamloops, B.C. where they have remained to date.

The gold anaylses were produced by Atomic Absorbtion from a 10 grm sample. The analyses were performed in the Kamloops Research and Assay Laboratories.

JS

Results of the Geochemical Survey

Results were plotted on a 1: 10,000 map (map 2). There are not enough anomalous values to justify contouring.

A detailed comparison with the distribution of other metals in previous surveys is still in progress. However, it can be seen that gold anomalies are frequently associated with copper anomalies.

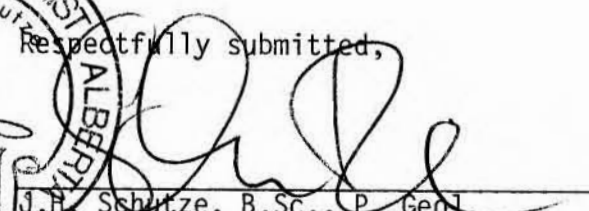
Also significant is the gold association with aplite dykes. These dykes occur in swarms, which cut the Milford and Slocan Formations and strike parallel to the contact between the Wragge Creek Stock and the non-intrusives. The dip of the dykes seems to be almost vertical. Previous core logging has shown that brecciated calc-silicates occur adjacent to some of these dykes and gold mineralization is associated with such calc-silicates.

An extended geochemical survey and geological mapping is necessary to further interpret the gold anomalies revealed in this survey.



Conclusion

The geochemical survey performed by SILVERA RESOURCES INC. consisted of gold analyses of samples previously taken by the Cyprus-Anvil Mining Corporation. Anomalous gold values are associated with copper mineralization and/or with calc-silicate breccias adjacent to aplite dykes. Further geochemical surveys and geological mapping is necessary.

PROFESSIONAL GEOLOGIST ALBERTA
Jan H. Schutze
Respectfully submitted,

J.H. Schutze, B.Sc., P. Geol.

APPENDIX I

Statement of Qualifications

I, Jan H. Schutze, hereby certify:

1. That I am a geologist residing at Box 7, Site 2, RR #4, Stony Plain, Alta.
2. That I am a registered Professional Geologist in the Province of Alberta (1986).
3. That I am a graduate of the University of Alberta, Edmonton, and hold a Bachelor of Science, Specialization, degree in geology.

4. That I have practiced my profession continuously since graduation.

I have worked as a geologist for:

- Cominco, Pine Point, N.W.T.
- Trigg, Woollett, Olson Consulting, Edmonton, Alberta
- University of Alberta, Edmonton
- Golden Star Resources Ltd., Edmonton, Alberta
- Silvera Resources Inc., Edmonton, Alberta

5. That I, personally carried out, and supervised this work for Silvera Resources Inc.




J. H. Schutze, P. Geol., President

APPENDIX II

SUMMARY OF COSTS

SILVERA RESOURCES - GEOCHEMICAL SURVEY
WORK COMPLETED MAY 23, 1986

SALARIES AND WAGES

MANAGEMENT

J.H. Schutze, P. Geol. 1 day @ \$400.00/day 400.00

GEOCHEMICAL ANALYSES

K.R.A.L. Labs 226 samples \$ 5.00/sample 1,130.00

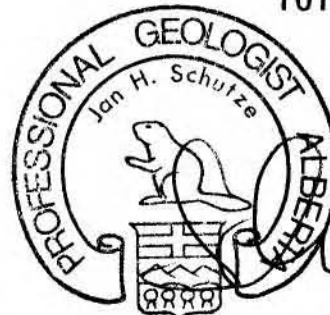
REPORT PREPARATION

R.T. McDonald, geol.i.t. 2 days @ \$150.00/day 300.00

Courier Services 100.00

Secretarial and Word Processing 200.00

TOTAL 2,130.00



Handwritten signature of Jan H. Schutze

APPENDIX III
GEOCHEMICAL LAB REPORT
FOR
SILVERA RESOURCES INC.

JS

GEOCHEMICAL ANALYSIS METHODS

Sample preparation

1. Soils - The samples are dried in our geochemical drying oven and then screened through a stainless steel 80 mesh sieve. The minus 80 fraction is reserved for analysis and the plus 80 fraction is discarded (unless we have been requested to save it).
2. Rocks - The samples are dried, crushed, split then ground using a ring-grinder to approximately -100 mesh.

Au Method

Half to one assay ton of sample is weighed, silver added, along with fluxes and the sample is started as a fire assay. After cupellation the bead is dissolved and the sample is nixed to ensure homogeneity and ,after settling, is read on an atomic absorption spectrophotometer using an air acetylene flame.

**KAMLOOPS
RESEARCH & ASSAY
LABORATORY LTD.**

B.C. CERTIFIED ASSAYERS

912 - 1 LAVAL CRESCENT — KAMLOOPS, B.C.
V2C 5P5
PHONE: (604) 372-2784 — TELEX: 048-8320

Silvera Resources Inc.
600-10130 103 St.,
Edmonton, Alta.
T5J 3R2

INVOICE: 86-0134
DATE: May 23, 1986.
FILE No. G 1464

Attn: Mr. Rob McDonald

225 Gold geochem

@ \$ 5.00

\$ 1,125.00

KAMLOOPS RESEARCH
&
ASSAY LABORATORY
LTD.

B.C. CERTIFIED ASSAYERS

912 LAVAL CRESCENT
PHONE 372-2784 - TELEX 048-8320

GEOCHEMICAL LAB REPORT

SILVERA RESOURCES INC.
600-10130 103 ST.,
EDMONTON, ALTA.
T5J 3R2

DATE - MAY 23, 1986

FILE NO. 3 1464

ATTN: ROB McDONALD

PAGE 1 / 6

KRAL NO.	IDENTIFICATION	AU
1	00N L48E	3.0
2	100N	3.0
3	200N	3.0
4	300N	3.0
5	400N	3.0
6	500N	3.0
7	100S L48E	3.0
8	200S	3.0
9	300S	3.0
10	400S	3.0
11	500S	3.0
12	00N L45E	3.0
13	100N	3.0
14	200N	3.0
15	300N	3.0
16	400N	3.0
17	500N	3.0
18	600N	3.0
19	700N	3.0
20	100S L46E	3.0
21	200S	3.0
22	300S	3.0
23	400S	3.0
24	500S	3.0
25	00N L44E	3.0
26	100N	3.0
27	200N	3.0
28	300N	3.0
29	400N	3.0
30	500N	3.0

KAMLOOPS RESEARCH & ASSAY LABORATORY LTD.
GEOCHEMICAL LAB REPORT
FILE NO. G 1464

PAGE 2 / 6

KRAL NO.	IDENTIFICATION	AU
31	600N	3.0
32	700N	3.0
33	800N	3.0
34	900N	3.0
35	1000N	3.0
36	1150N	10.0
37	100S L44E	3.0
38	200S	3.0
39	300S	3.0
40	400S	3.0
41	500S	3.0
42	00N L42E	3.0
43	100N	3.0
44	200N	3.0
45	300N	3.0
46	400N	3.0
47	500N	3.0
48	600N	3.0
49	700N	3.0
50	800N	3.0
51	900N	3.0
52	1000N	3.0
53	1100N	220.0
54	1200N	3.0
55	1300N	3.0
56	100S L42E	3.0
57	200S	3.0
58	300S	3.0
59	400S	3.0
60	500S	3.0
61	00N L40E	3.0
62	100N	3.0
63	200N	3.0
64	300N	3.0
65	400N	3.0
66	500N	3.0
67	600N	3.0
68	700N	3.0
69	800N	3.0
70	900N	3.0

KAMLDGPS RESEARCH & ASSAY LABORATORY LTD.
 GEOCHEMICAL LAB REPORT

FILE NO. G 1464

PAGE 3 / 6

KRAL NO.	IDENTIFICATION	AU
71	1000N	3.0
72	1100N	3.0
73	1200N	3.0
74	100S L40E	3.0
75	200S	3.0
76	300S	3.0
77	400S	3.0
78	500S	3.0
79	00N L38E	3.0
80	100N	3.0
81	200N	3.0
82	300N	3.0
83	400N	3.0
84	500N	3.0
85	600N	3.0
86	700N	190.0
87	800N	3.0
88	900N	3.0
89	1000N	3.0
90	1100N	3.0
91	100S L38E	3.0
92	200S	3.0
93	300S	3.0
94	400S	3.0
95	500S	3.0
96	00N L36E	3.0
97	100N	3.0
98	200N	3.0
99	300N	3.0
100	400N	75.0
101	500N	3.0
102	600N	3.0
103	700N	3.0
104	800N	3.0
105	900N	3.0
106	100S L36E	3.0
107	200S	3.0
108	300S	3.0
109	400S	3.0
110	500S	3.0

KAMLOOPS RESEARCH & ASSAY LABORATORY LTD.
GEOCHEMICAL LAB REPORT
FILE NO. G 1464

PAGE 4 / 6

KRAL NO.	IDENTIFICATION	AU
111	00N L34E	3.0
112	100N	3.0
113	200N	3.0
114	300N	3.0
115	400N	3.0
116	500N	3.0
117	600N	3.0
118	700N	3.0
119	800N	3.0
120	1000N	3.0
121	100S L34E	3.0
122	200S	3.0
123	300S	3.0
124	400S	3.0
125	500S	3.0
126	00N L32E	3.0
127	100N	3.0
128	200N	3.0
129	300N	3.0
130	400N	3.0
131	500N	3.0
132	600N	35.0
133	700N	30.0
134	800N	3.0
135	1000N	3.0
136	1100N	3.0
137	1200N	3.0
138	1300N	3.0
139	1400N	3.0
140	100S L32E	3.0
141	200S	3.0
142	300S	3.0
143	400S	3.0
144	500S	3.0
145	00N L30E	3.0
146	100N	3.0
147	200N	3.0
148	300N	3.0
149	400N	3.0
150	500N	3.0

KAMLOOPS RESEARCH & ASSAY LABORATORY LTD.
GEOCHEMICAL LAB REPORT

FILE NO. G 1464

PAGE 5 / 6

KRAL NO.	IDENTIFICATION	AU
151	600N	3.0
152	700N	3.0
153	800N	3.0
154	900N	3.0
155	1000N	3.0
156	1100N	3.0
157	1200N	3.0
158	1300N	3.0
159	1400N	3.0
160	1500N	3.0
161	1700N	3.0
162	1800N	3.0
163	1900N	3.0
164	00N L28E	3.0
165	100N	3.0
166	200N	3.0
167	300N	3.0
168	400N	3.0
169	500N	3.0
170	600N	3.0
171	700N	3.0
172	800N	3.0
173	900N	3.0
174	1000N	3.0
175	1100N	30.0
176	1200N	3.0
177	1300N	3.0
178	1400N	3.0
179	1500N	3.0
180	1600N	3.0
181	1700N	3.0
182	1800N	3.0
183	1900N	3.0
184	2000N	3.0
185	00N L26E	3.0
186	100N	3.0
187	200N	3.0
188	300N	3.0
189	400N	3.0
190	500N	50.0

KAMLOOPS RESEARCH & ASSAY LABORATORY LTD.
GEOCHEMICAL LAB REPORT

FILE NO. G 1464

PAGE 6 / 6

KRAL NO.	IDENTIFICATION	AU
191	600N	3.0
192	700N	3.0
193	800N	3.0
194	900N	3.0
195	1000N	3.0
196	1100N	3.0
197	1200N	3.0
198	1300N	3.0
199	1400N	3.0
200	1500N	3.0
201	1600N	3.0
202	1700N	3.0
203	1800N	3.0
204	1900N	3.0
205	1000N L24E	3.0
206	1100N	3.0
207	1200N	3.0
208	1300N	3.0
209	1400N	3.0
210	1500N	3.0
211	1600N	3.0
212	1700N	3.0
213	1800N	3.0
214	1900N	3.0
215	1000N L25E	3.0
216	1100N	3.0
217	1200N	3.0
218	1300N	3.0
219	1400N	3.0
220	1500N	3.0
221	1600N	3.0
222	1700N	3.0
223	1800N	3.0
224	1900N	3.0
225	2000N L22E	3.0

3 INDICATES <5 PPB

AU METHOD FIRE ASSAY ATOMIC ABSORPTION

KAMLOOPS RESEARCH
&
ASSAY LABORATORY
LTD.

B.C. CERTIFIED ASSAYERS

912 LAVAL CRESCENT
PHONE 372-2784 - TELEX 048-8320

CUMULATIVE FREQUENCY PLOT

SILVERA RESOURCES INC.
600-10130 103 ST.,
EDMONTON, ALTA.
T5J 3RZ

DATE MAY 23, 1986
FILE NO. G 1464

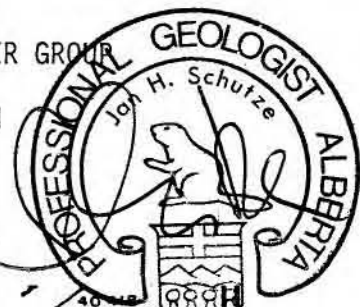
ATTN: ROB McDONALD

CUMULATIVE FREQUENCY PLOT FOR AU USING A LOGARITHMIC CONVERSION

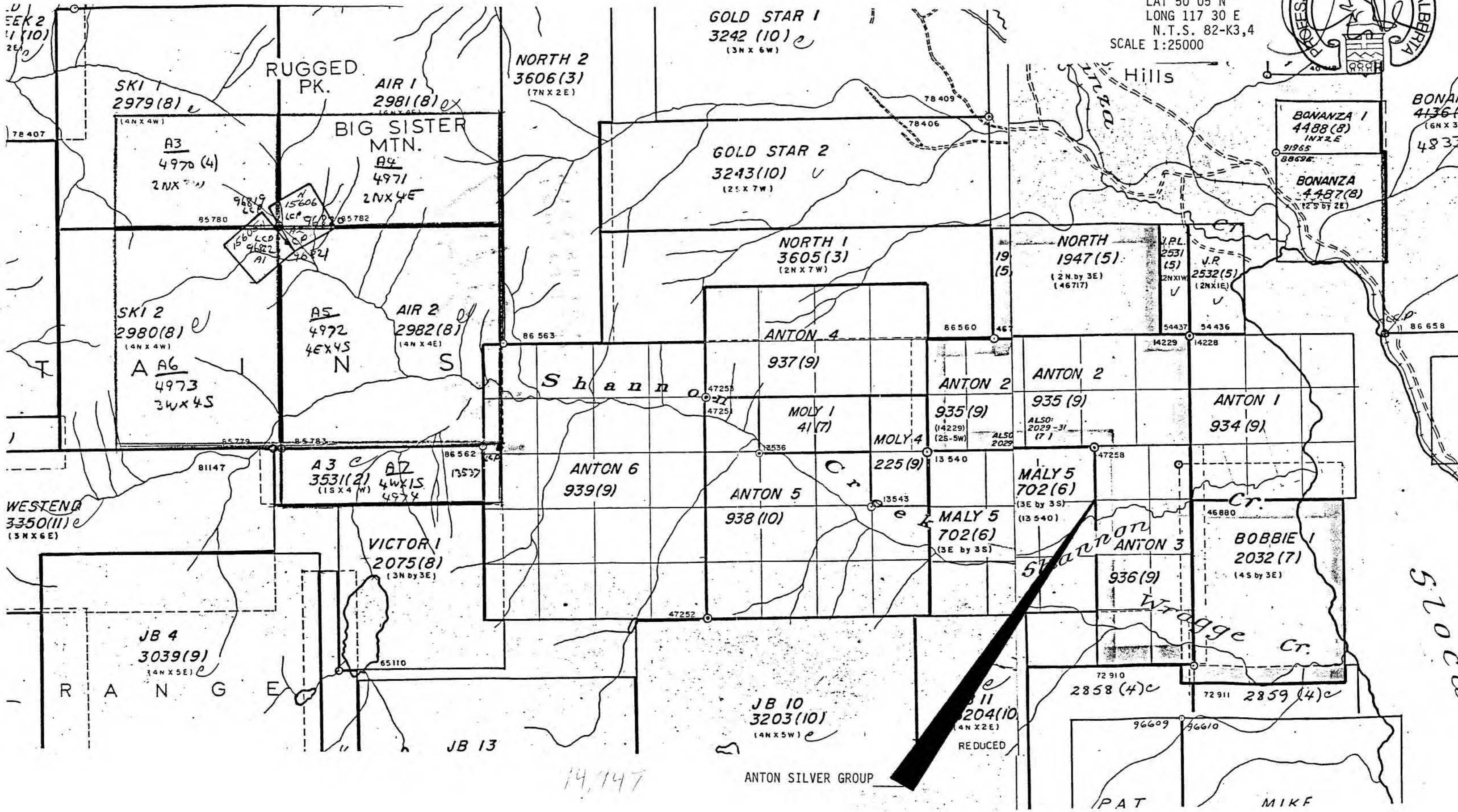
CLASS	FREQUENCY	% FREQUENCY	CUMULATIVE FREQUENCY	%
3.00--	3.72	217	96.4	100.0
3.72--	4.61	0	0.0	3.6
4.61--	5.71	0	0.0	3.6
5.71--	7.08	0	0.0	3.6
7.08--	8.78	0	0.0	3.6
8.78--	10.88	1	0.4	3.6
10.88--	13.49	0	0.0	3.1
13.49--	16.72	0	0.0	3.1
16.72--	20.73	0	0.0	3.1
20.73--	25.69	0	0.0	3.1
25.69--	31.84	2	0.9	3.1
31.84--	39.47	1	0.4	2.2
39.47--	48.93	0	0.0	1.8
48.93--	60.65	1	0.4	1.8
60.65--	75.18	1	0.4	1.3
75.18--	93.19	0	0.0	0.9
93.19--	115.51	0	0.0	0.9
115.51--	143.18	0	0.0	0.9
143.18--	177.48	0	0.0	0.9
177.48--	220.00	2	0.9	0.9

MEAN 6.0

STD. DEV. 13.2



SLOCAN MINING DIVISION
LAT 50 05 N
LONG 117 30 E
N.T.S. 82-K3,4
SCALE 1:25000



ANTON SILVER GROUP

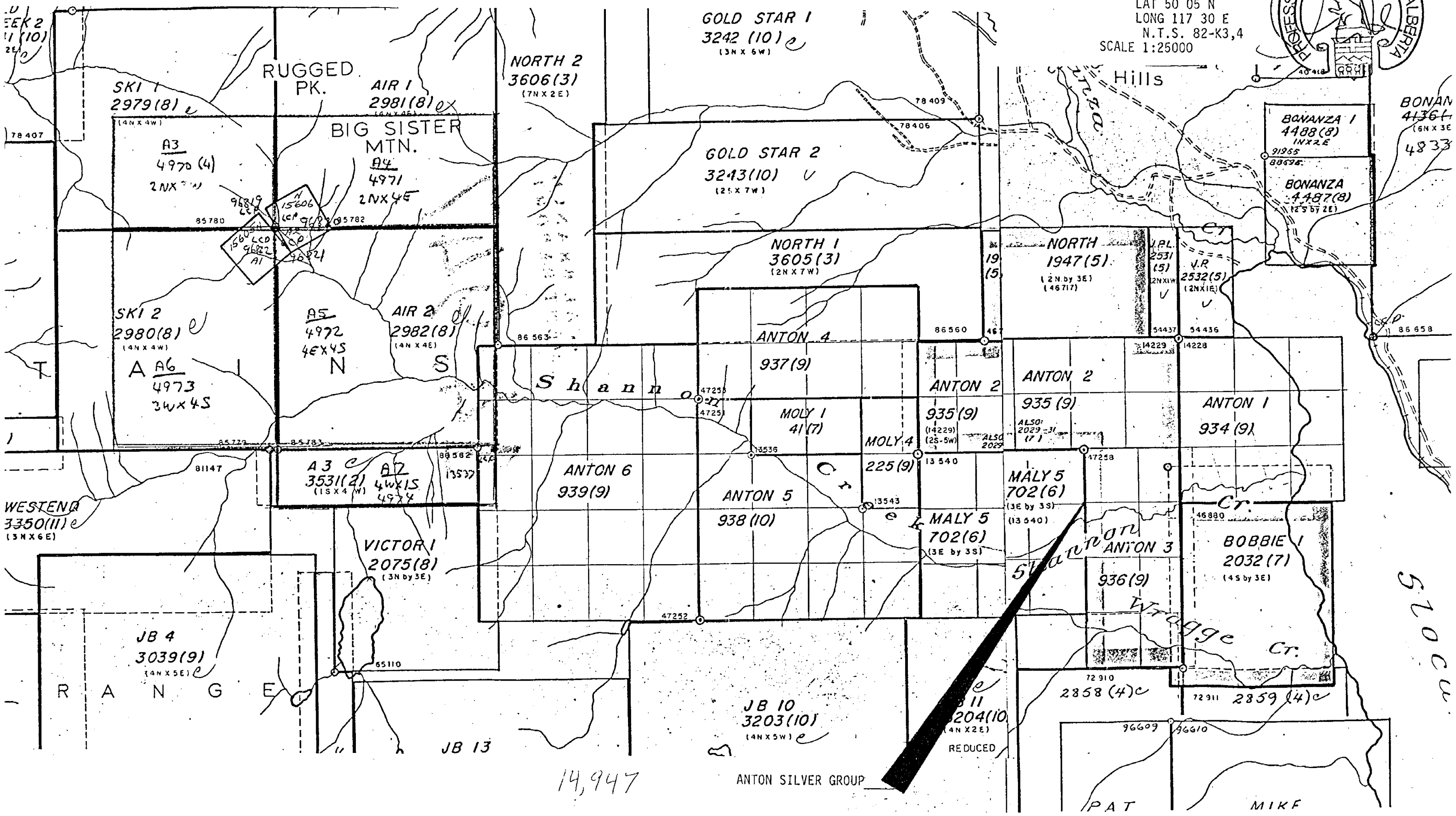
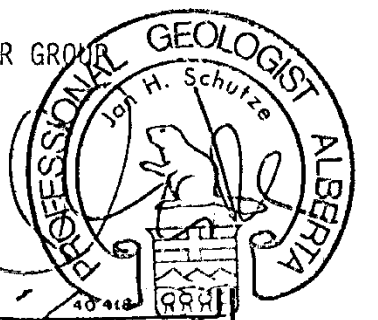
14,147

REDUCED

51000

SILVERA RESOURCES INC.
INDEX MAP FOR THE ANTON SILVER GROUP

SLOCAN MINING DIVISION
LAT 50 05 N
LONG 117 30 E
N.T.S. 82-K3,4
SCALE 1:25000

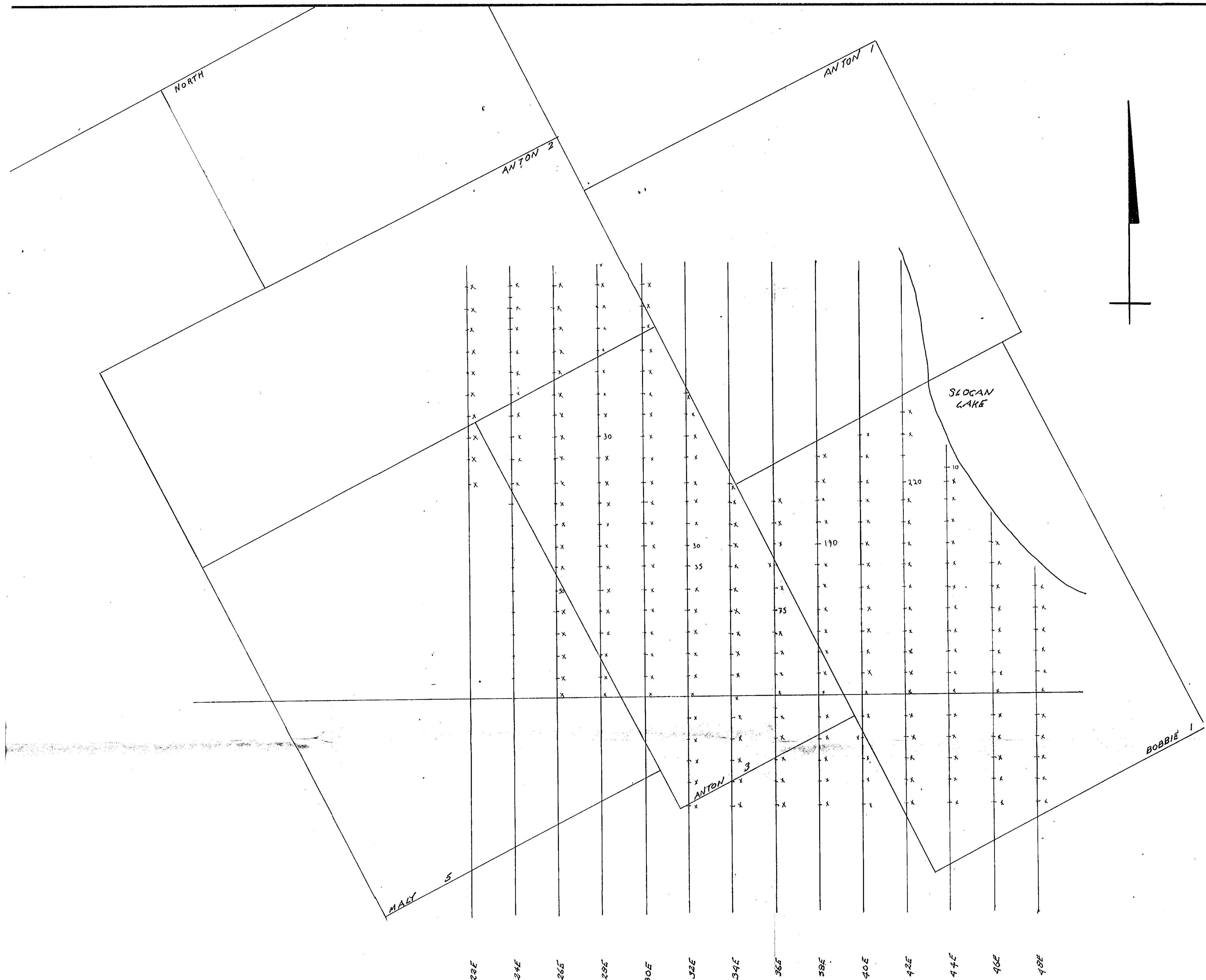


14,947

ANTON SILVER GROUP

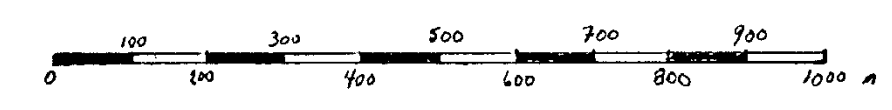
SLOCAN

PAT MIKE



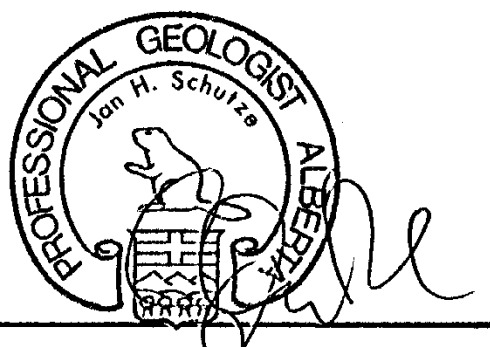
22E 24E 26E 28E 30E 32E 34E 36E 38E 40E 42E 44E 46E 48E

LEGEND
 | 10 Au RESULTS (ppb)
 | x Less Than 5 ppb Au



GEOLOGICAL BRANCH
 ASSESSMENT REPORT

14,947



SILVERA RESOURCES INC.
 ANTON SILVER GROUP PROJECT

Au GEOCHEMISTRY

Scale 1:10,000

DESIGNED	DRAWN ROB M S DONALD	CHECKED J. H. SCHUTZE		
ENGINEER	APP'D / BIDDING	APP'D / CONST.		
APP'D / CLIENT	SCALE 1:10,000	DATE Y/M/D 84 05 22		
CONTRACT	SUBDIV.	SUBJECT	DWG. NO.	REV.