

86-366-14973

GEOLOGICAL REPORT
BREW 1 AND BREW 2 CLAIMS
RECORD NO'S 3132, 3133

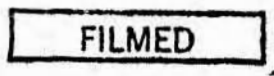
MINISTRY OF ENERGY, MINES AND PETROLEUM RESOURCES	
Rec'd	JUL 4 1986
SUBJECT	_____
FILE	_____
VANCOUVER, B.C.	

LILLOOET MINING DIVISION, BRITISH COLUMBIA

N.T.S. 92 1/12W.
LATITUDE: 50° ~~22'4~~ 35.9'
LONGITUDE: 121° ~~23'W~~ 57.5'

for:

Operator: GEOSTAR MINING CORPORATION.
211-543 Granville Street
Vancouver, British Columbia V6C 1X8



Owner(s): Geostar Mining Corporation
G. McKillop

**GEOLOGICAL BRANCH
ASSESSMENT REPORT**

14,973

BARRY J. PRICE, M.Sc., F.G.A.C.
Consulting Geologist
3447 W. 7th Ave., Vancouver, B.C.
Vancouver, B.C. V6R 1W2

June 30, 1986

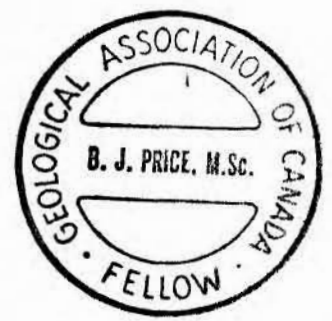


TABLE OF CONTENTS

	PAGE
SUMMARY	
INTRODUCTION	3
LOCATION AND ACCESS	1
PROPERTY DEFINITION	2
HISTORY	3
REGIONAL GEOLOGY	4
ADJACENT MINERAL DEPOSITS	5
PROPERTY GEOLOGY	7
MINERALIZATION	7
GEOCHEMISTRY	8
DISCUSSION OF CLAIMS	8
CONCLUSIONS & RECOMMENDATIONS	9
PRELIMINARY BUDGET 1986 EXPLORATION	10
BIBLIOGRAPHY	11
APPENDIX I - ITEMIZED COST STATEMENT	12

LIST OF FIGURES

FIGURE 1	LOCATION MAP
FIGURE 2	TOPOGRAPHY OF BREW CLAIMS AREA
FIGURE 3	CLAIM MAP
FIGURE 4	REGIONAL GEOLOGY
FIGURE 5	MINERAL DEPOSITS IN THE AREA
FIGURE 6	PROPERTY GEOLOGY
FIGURE 7	AREA OF 1985 SOIL SAMPLES
FIGURE 8	STREAM GEOCHEMISTRY - ARSENIC
FIGURE 9	STREAM GEOCHEMISTRY - GOLD

TABLES

TABLE I	PERTINENT CLAIM DATA
TABLE II	STRATIGRAPHIC TABLE
TABLE III	MINERAL DEPOSITS IN THE COAST-CASCADE AREA

SUMMARY

The Free-Home-Brew Property consisting of 75 units is located on Enterprise Creek, 4 kilometers south of Lillooet, B.C., and 4 kilometers west of the Fraser River. The area is situated in the Coast Mountains with the best present access by helicopter from the Lillooet airport.

The Brew claims are staked in an area that was previously staked as the Enterprise claims in 1981. The claims are underlain by Relay Mountain Group weakly metamorphosed and sheared argillaceous sediments of Lower Cretaceous age, bounded to the east by a major regional splay of the Fraser Fault zone, and to the west by the Phair Creek thrust fault.

The claims lie in a strongly mineralized belt, with numerous gold/silver, copper and molybdenum deposits, some related to the major faults. Cayoosh Creek, just north of the claims, was a moderately rich placer gold creek, and the Golden Cache deposit nearby had small quartz lenses with high grade gold.

Gold values up to 685 ppb have been obtained from Enterprise Creek and 26 soil samples on reconnaissance soil sample lines indicate a significant gold-arsenic anomaly. A 650 meter interval of one line contains all but one value over 120 ppb gold with a maximum of 620 ppb. Considering the preliminary but encouraging nature of the initial program, a Stage I reconnaissance prospecting program is highly recommended. The Stage I program is estimated to cost \$15,000.

A Stage II geological, trenching and geochemical program is contingent on the result of Stage I and is estimated to cost \$22,500. If Stage I and Stage II are successful in locating targets, an initial Stage III 500 meter drill test will be warranted. The Stage III drilling program is estimated to cost \$100,000.

respectfully submitted

Barry Price

Barry Price, M.Sc., FGAC.
Consulting Geologist
June 30, 1986



INTRODUCTION:

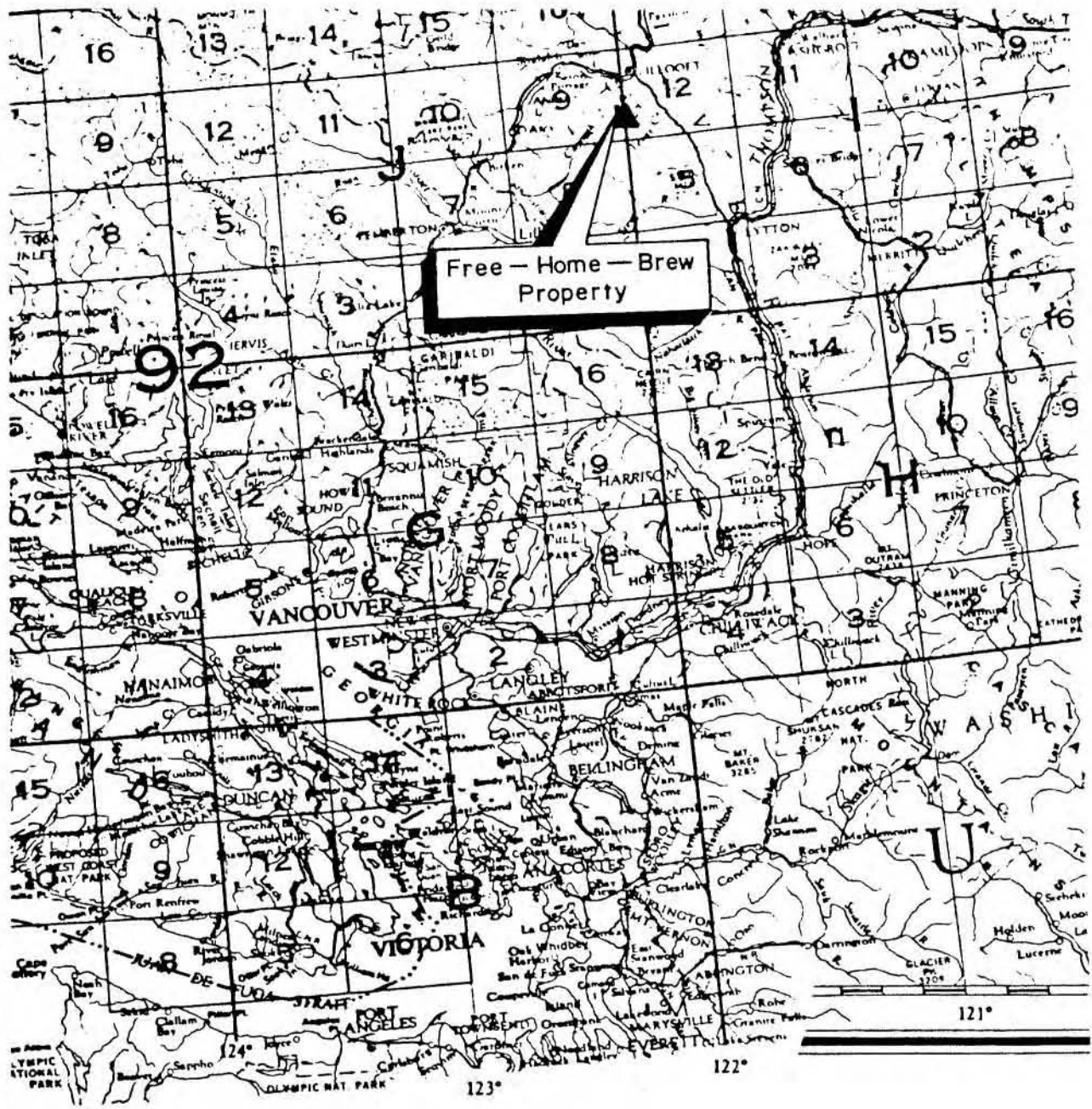
The Free-Home-Brew Property includes 6 modified grid mineral claims totaling 75 units or approximately 1875 hectares. The claims are situated in the headwater areas of Enterprise and Riley Creeks which are tributaries of Cayoosh Creek and the Fraser River respectively, about 4 kilometers south of Lillooet, British Columbia. In 1985, Peter A. Christopher was retained by directors of Geostar Mining Corp. to review geological data on the area, stake the Home and Free claims and examine the area of the Brew claims. The Brew claim area was examined on May 27, 1985 and Free and Home claims were staked and examined on July 2, 1985.

The claim area was staked because of precious and base metal values obtained from a reconnaissance surface geochemical line and because of a similar geological setting to the adjacent Spray and Foam Claims, owned by Miramar Energy Corporation, on which a diamond drill hole in 1980 intersected 21 meters of quartz stockwork carrying an average of 0.106 ounces per ton gold.

This report summarizes Mr. Christopher's work, and provides recommendations for a staged exploration program to test the precious metal potential of the claim area.

LOCATION AND ACCESS (Figures 2 & 3)

The Free-Home-Brew Property is situated in the headwater areas of Enterprise and Riley Creeks about 4 kilometers south of Lillooet, British Columbia and 4 kilometers west of the Fraser River. Elevations on the property range from about 4100 feet (1250 meters) in the valley of Enterprise Creek to over 8500 feet (2591 meters) on Mount Brew. Elevations above 6500 feet are



Geostar Mining Corp. VANCOUVER, B.C.	
Free-Home-Brew Property	
LOCATION MAP	
DRAWN BY:	N.T.S. : 92 I/12 W
DATE : JULY, 1985	FIGURE NO. 1

mainly above tree line but valley areas contain commercial timber.

Current access to the property is by helicopter from the Lillooet airport where Can-Arc Helicopters (Ph. 256-4988) is based. Helicopter ferry times from bases at Pemberton or Kamloops range from 25 to 35 minutes. Road access from the Cayoosh Creek drainage reaches the northern boundary of the Free claims but is at a low elevation in Enterprise Creek. Lillooet is reached in 4 to 5 hours driving time from Vancouver, and is serviced by B.C. Railway for passengers and freight.

PROPERTY

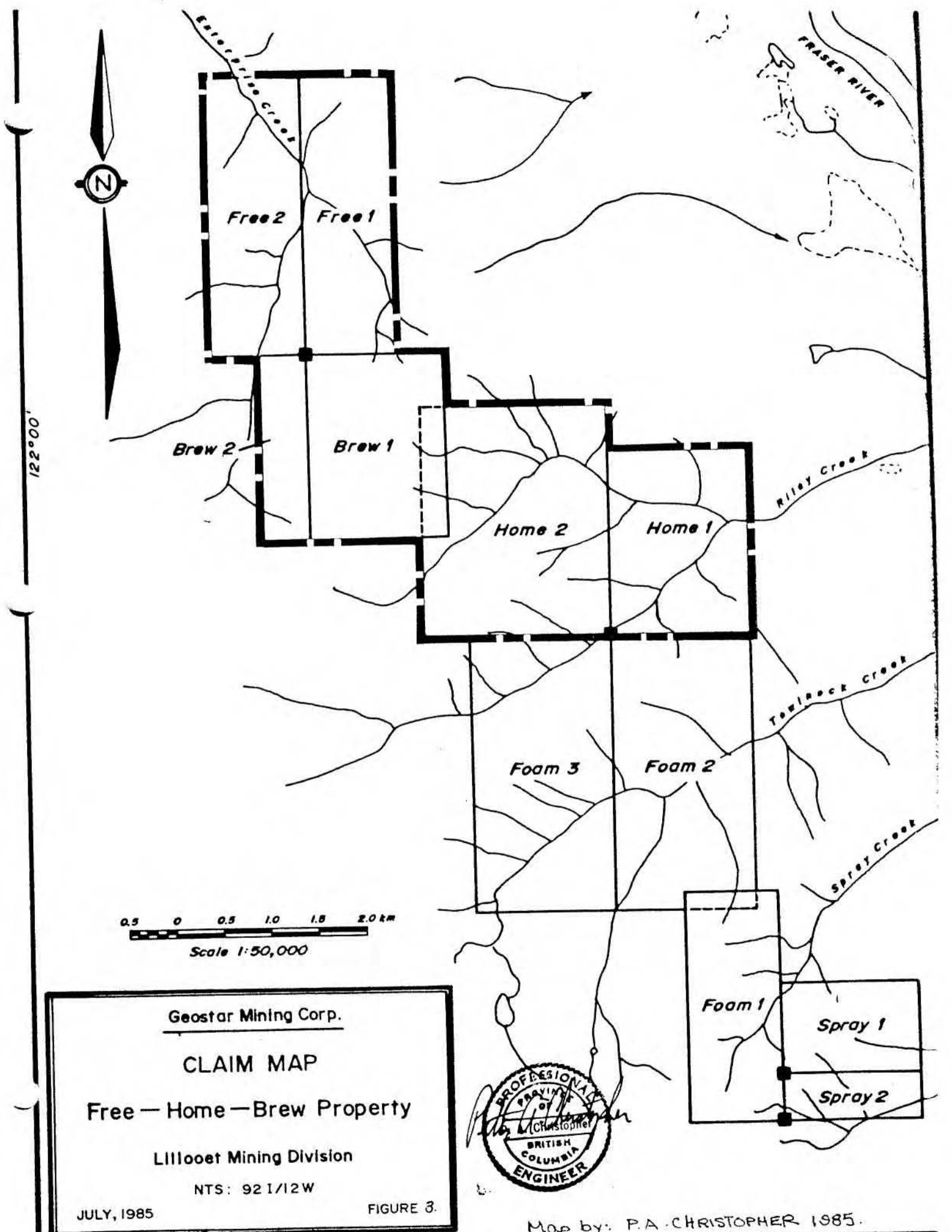
The Free-Home-Brew Property consisting of the Brew 1 and Brew 2, Home 1 and Home 2, and Free 1 and Free 2 claims was staked using the modified grid system. The common legal corner post for the Brew claims was examined by Peter Christopher on May 27, 1985.

The Free-Home-Brew Property contains 75 units or a maximum possible area of 1875 hectares. Table 1 summarizes pertinent claim data on the property and Figure 2 shows the claims located on a section of 1:50,000 N.T.S. map sheet 92I-12W.

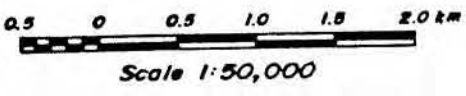
TABLE 1. PERTINENT CLAIM DATA

<u>NAME</u>	<u>DISTRIBUTION</u>	<u>STAKER</u>	<u>RECORDED</u>	<u>RECORD #</u>
BREW 1	3E X 4N	G.R.McKILLOP	April 10/85	3132
BREW 2	1W X 4N	"	"	3133
HOME 1	5N X 3E	P.A.CHRISTOPHER	July 5/85	3271
HOME 2	5N X 4W	"	"	3272
FREE 1	6N X 2E	"	"	3273
FREE 2	6N X 2W	"	"	3274

75 units



122°00'

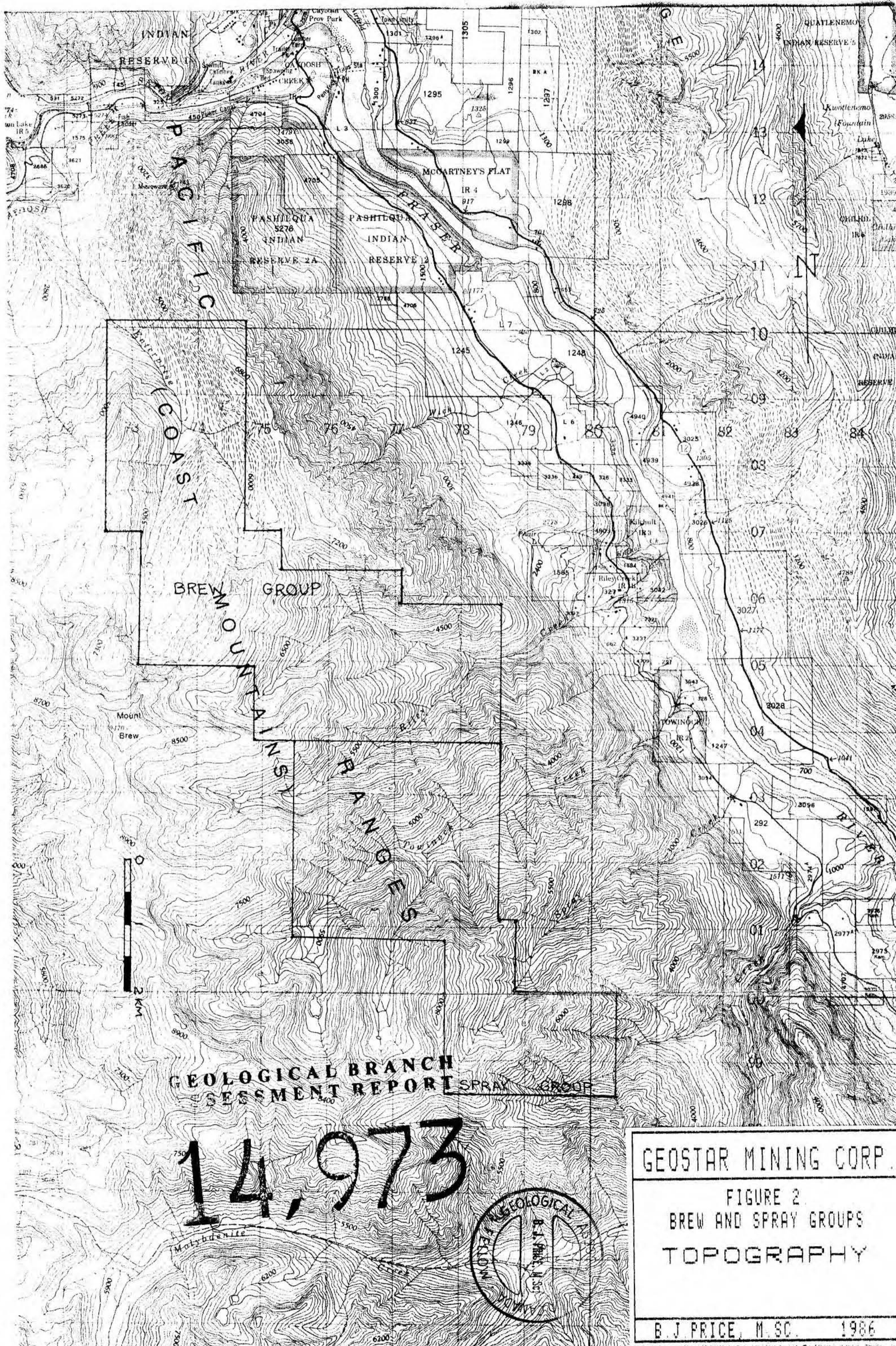


Geostar Mining Corp.
CLAIM MAP
 Free — Home — Brew Property
 Lillooet Mining Division
 NTS: 92 1/12 W
 JULY, 1985

FIGURE 3.



Map by: P.A. CHRISTOPHER 1985.



GEOLOGICAL BRANCH
ASSESSMENT REPORT

14, 1973



GEOSTAR MINING CORP.

FIGURE 2
BREW AND SPRAY GROUPS
TOPOGRAPHY

B. J. PRICE, M. SC. 1986

HISTORY

Prospecting in Lillooet began with the discovery of rich placer gold on numerous gravel bars of the Fraser River. Chinese miners discovered gold on Cayoosh Creek in 1886. Total recorded production from this creek from 1886 to 1930 is only 4,789 ounces, although no production is recorded for the period 1889-1906, during which time the creek was mined each year (B.C. Dept. Mines Bulletin 28). The source of at least some of the Cayoosh Creek gold was discovered in quartz veins above the Creek, a few miles northwest of the Spray claims. The Golden Cache and Ample properties, staked about 1888, near Cayoosh Creek had limited production, from 1897-1901, of 727 ounces of gold from 3,075 tons of ore.

The date of earliest work on Enterprise Creek is not known, but it is suspected that prospecting was done in the area when the Golden Cache property was active.

In later years, geochemical reconnaissance of the Enterprise and Riley Creek areas has been conducted by several companies. Base and precious metal anomalies have lead to staking on Enterprise and Riley Creeks but generally at lower elevations. No filed records of work exist for the Free-Home-Brew Property area but the gossan zone has undoubtedly been examined by prospectors in the past. The present interest in the area was generated by anomalous results obtained by a prospecting venture in 1980 and 1981 funded by Territorial Gold Placers Ltd., and conducted by JMT Services Corp, with whom the writer was working.

A portion of the claim area was staked in 1977 as the Pike 1-7 claims, owned by William Cook, Lillooet, B.C. (Assessment Report # 6971).

Duval Corporation International staked a large area centered on Towinock Creek in 1979, after reconnaissance silt and soil samples proved anomalous. Enterprise Creek was also sampled, and had anomalous gold values in silt and soil. (Figure **). The anomalous gold values were not followed up because Duval ceased exploration in Canada.

The Brew claims were staked by Gregory R. McKillop on April 9, 1985 and recorded on April 10, 1985. The claims cover anomalous silt geochemical results obtained during the previous field season. The Home and Free claims were staked by the writer for Mr. McKillop on July 2, 1985 and recorded in Vancouver on July 5, 1985. P.Christopher examined quartz veins, quartz stockwork and silicified zones on the claims and has noted malachite in weathered float during his 1985 inspection.

REGIONAL GEOLOGY:

Regional mapping by the Geological Survey of Canada indicates that the claims are underlain by Jurassic-Cretaceous Relay Mountain Group sediments, comprising argillites, phyllites and schists with some quartzites and volcanic rocks. The Marshall Creek Fault System, a major northwest splay off the Fraser River Fault System, passes northeast of the property and separates the Relay Mountain Group from rocks of the pre-Jurassic Bridge River Complex. Bridge River Group rocks are superposed over Relay Mountain Group rocks west of the property, by the Phair Creek

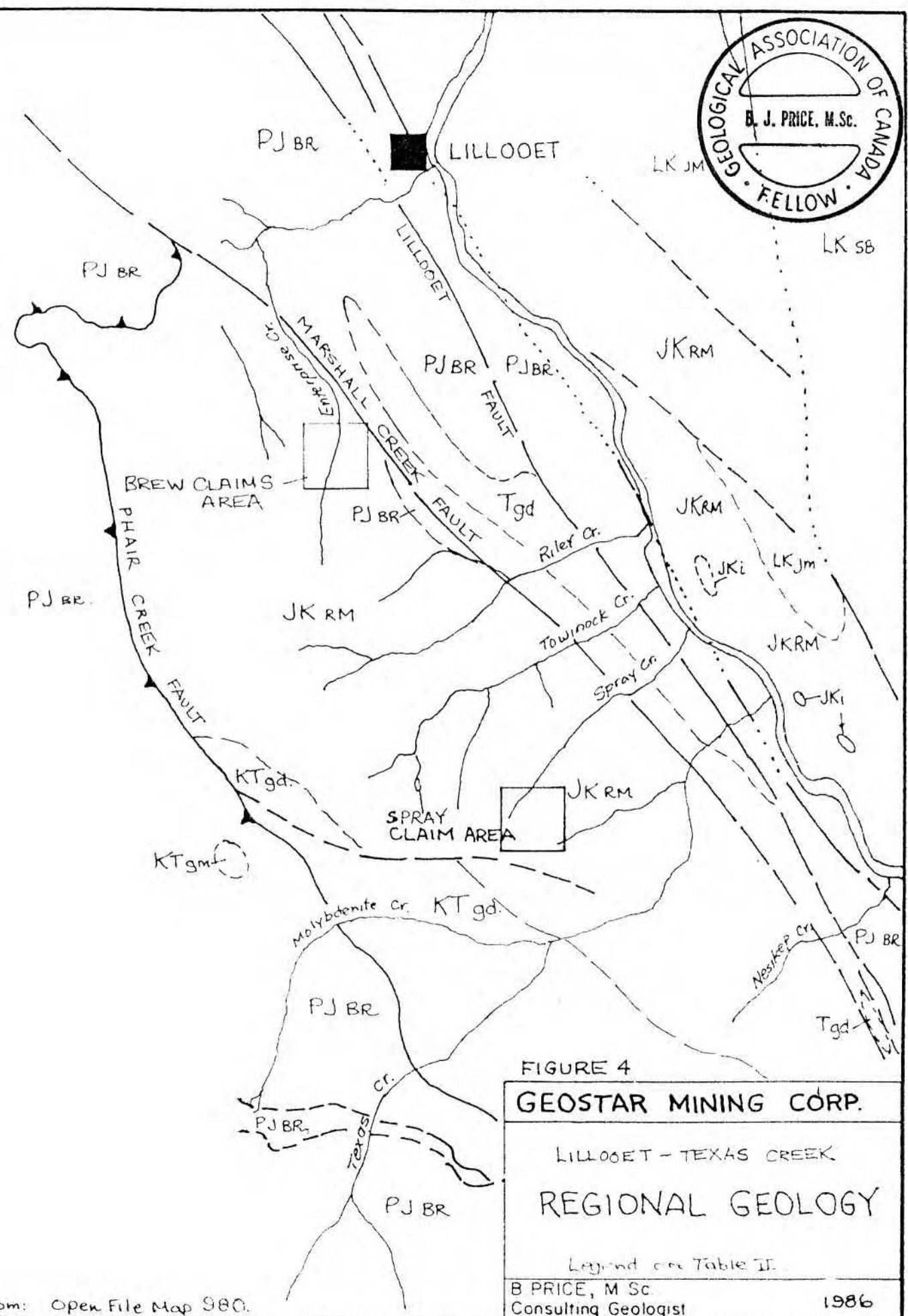
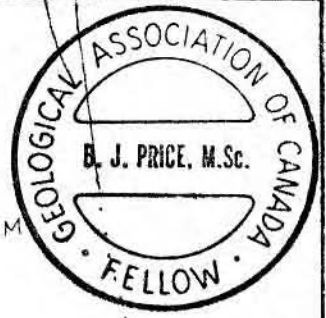


FIGURE 4
GEOSTAR MINING CORP.
 LILLOOET - TEXAS CREEK
REGIONAL GEOLOGY
 Legend on Table II.
 B PRICE, M.Sc.
 Consulting Geologist
 1986

From: Open File Map 980.

TABLE II

STRATIGRAPHIC TABLE
TEXAS CREEK- LILLOUET AREA, B.C.

TERTIARY:

Tgd Granodiorite, Felsite, in part Eocene Age

CRETACEOUS AND/OR TERTIARY:

KTgd Granodiorite with locally abundant septae of Relay Mtn or Bridge River Group rocks.

CRETACEOUS:

Kgd,qm Granodiorite, Quartz Monzonite. Few or no included metamorphics.

UKk Kingsvale Group. Basalt, local volcanoclastics

IKsb Spences Bridge Group. Andesite, dacite, rhyolite, intercalated volcanoclastics, sandstone, shale, local conglomerate

IKjm Jackass Mountain Group. Sandstone, Conglomerate, Shale

JURASSIC AND CRETACEOUS:

JKrm Relay Mountain Group. Argillite, Siltstone, sandstone and metamorphosed equivalents.

JKgd Granodiorite, quartz monzonite.

PERMIAN TO JURASSIC:

PJbr Bridge River Group. Radiolarian Chert, Argillite, basalt, local carbonate, Serpentine, Ultramafics., Phyllite, Greenstone, Schists.

Geological boundary

Fault, high angle

Fault, thrust.

Thrust Fault. Cretaceous and/or Tertiary intrusions are reported to cut both the Relay Mountain and Bridge River Groups.

The Marshall Creek and Lillooet faults are splays from the Fraser Fault system, which is a major tectonic break involving right lateral "wrench" movement in the order of 70 to 90 miles.

Regional geology is shown in the accompanying Figure 4. (G.S.C. Open File Map 980).

ADJACENT MINERAL DEPOSITS:

Some of the more significant mineral deposits in the area are shown on the accompanying Figure 4, and brief descriptions are given below:

GOLDEN CACHE (AMPLE): Situated on the cliffs above Cayoosh Creek, the deposit, mined in the early 1900's, contained small but high grade gold-quartz veins, in metamorphosed sedimentary rocks of the Bridge River Group. (Permian-Jurassic?). The claims supported a 10 stamp mill for a short while; a total of 727 ounces of gold was produced from 3,075 tons of ore (milled grade 0.236 oz./ton). The area is still being explored, but with inconclusive results.

LYTTON GOLD: The old "Lytton Gold" prospect, situated on Mt. Roach, several miles southwest of Lytton, is a quartz vein traced for over 1200 feet and averaging 4 feet wide for considerable distance. Native gold, galena, arsenopyrite, and other minerals occur in vuggy to sheeted quartz. The property was most recently worked on by Rea Gold Corp. and Yucana Resources Inc. in 1984.

INDEX MOLYBDENUM: At the head of Molybdenite Creek, the north fork of Texas Creek, flakes and rosettes of very pure molybdenite occur in granitic rock. A small crushing plant was operated on the prospect in 1979 by Victor Guinet.

SPRAY CLAIMS: At the head of Spray Creek, a few kilometers southeast of the Brew Claims, Miramar Energy Corp. has optioned the Spray claims from G. McKillop. The property was originally held as the Tow claims by Duval Corp., who were exploring for Molybdenum. While porphyry style molybdenite was discovered, analysis of drill core from Hole 81-4 indicated a 21 meter (69 foot) section assayed 0.106 ounces gold per ton, in a quartz stockwork. Miramar Energy Corp. is aggressively pursuing exploration of the claims.

NAICH: North of Nahatlatch River, on a plateau area north of the Forestry Lookout, a similar band of serpentine in fault (?) contact with granodiorite sills has associated large quartz veins with arsenic, antimony and gold mineralization. Staked by JMT/Territorial in 1981, the property was drilled in 1984 or 1985 by Hudson Bay Exploration and J.V.Partners. Results were inconclusive; although the vein was traced by drilling, no shoots of ore-grade were discovered. The area has some analogies to the Bralorne style of veins.

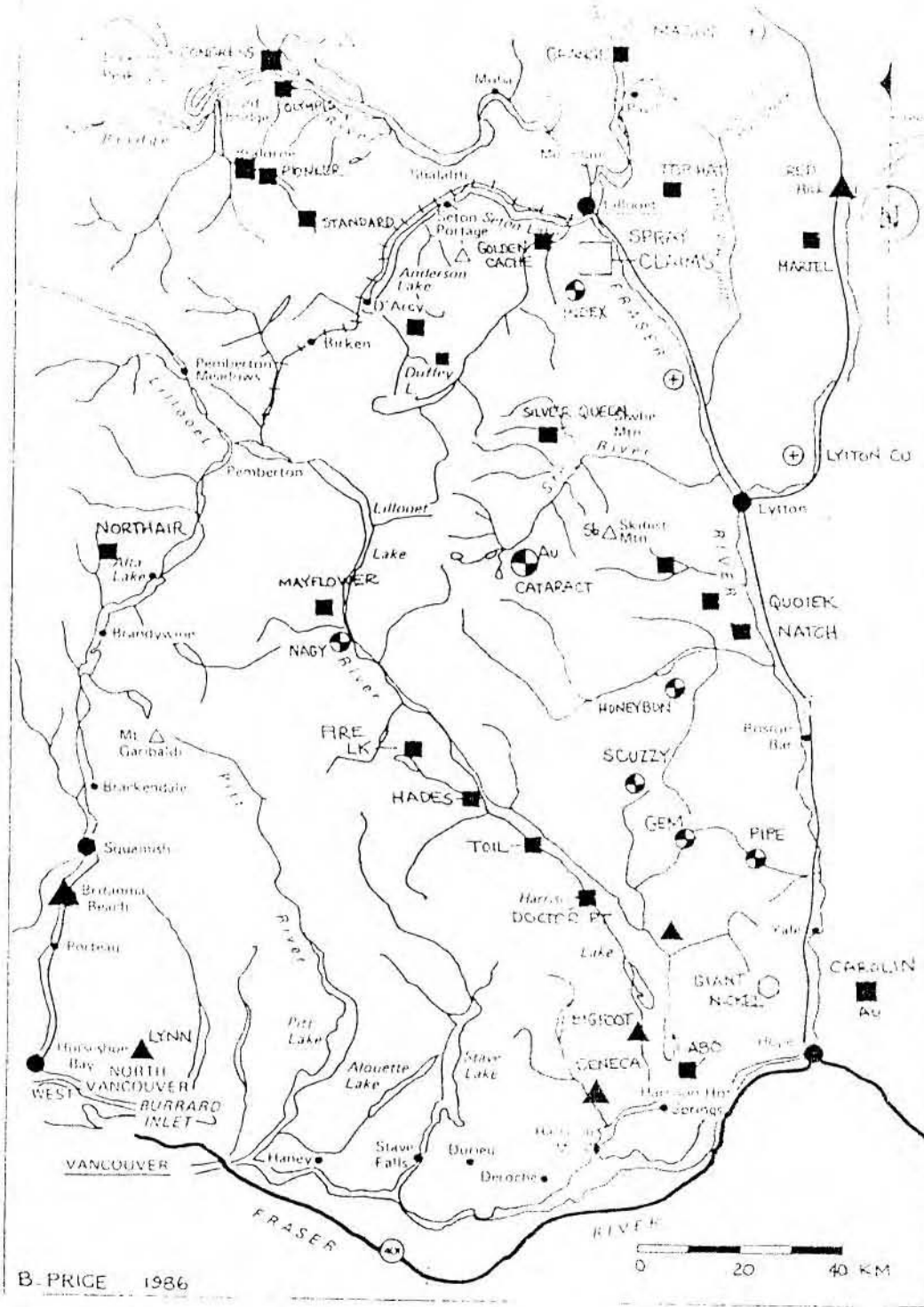
TOP HAT: This property, situated at the head of Cinquefoil Creek and Fountain Creek is a typical epithermal gold-silver deposit in volcanics of the Spences Bridge Group.

Some other deposits in the area that have reserves or recorded production are listed in the following table:

TABLE III
MINERAL DEPOSITS IN THE COAST RANGE-CASCADE AREA

NAME	TONNAGE	GRADE	COMMENTS
PACIFIC NICKEL	4.1 M TONS	0.6% NI, 0.3% CU	CLOSED
BRITTANIA	53 M TONS	1.1% CU, 0.65% ZN 0.02 OZ/T AU	RESERVES REMAIN
	RES 1.3 M TONS	0.20 OZ/T AG 1.9% CU	NO 10 ZONE
SENECA	1.7 M TONS	3.57% ZN 1.2 OZ/T AG 0.024 OZ/T AU.	SUB-ECON.
CARDLIN MINES	2.2 M TONS	0.127 OZ/T AU	SUB-ECON. (DILUTION)
MAGGIE	200 M TONS	0.4 % CU EQUIV	LOW GRADE
NORTHAIR (1977)	330,637 TONS	0.396 OZ/T AU 4.56 OZ/T AG 6.4 % (PB+ZN)	RESERVES 100,000 T.
	1980 RES.110,812 TONS	0.396 OZ/T AU	+ AG, PB, ZN
GEM	30 M TONS?	0.20% MOS2	PRICE LOW
BRALORNE	PROD 5.5 M TONS	0.51 OZ/T AU	
PIONEER	PROD 2.7 M TONS	0.48 OZ/T AU	
	RES. 1.0 M TONS	0.28 OZ/T AU	PROVEN
LYTTON CU	6,600 T/ VERT FT.	0.62% CU	LOW GRADE
BLACK DOME	203,000 TONS	0.79 OZ/T AU 3.76 OZ/T AG	OPERATING 1986

SOURCES: EMR BULL MR 198, CAN MINES HANDBOOK, MINING REVIEW.



B. PRICE 1986

0 20 40 KM

LEGEND

- GOLD-SILVER DEPOSITS
- ⊕ COPPER PORPHYRIES
- ⊗ MOLYBDENUM "
- ▲ MASSIVE SULPHIDES

FIGURE 5

GEOSTAR MINING CORP.

MINERAL DEPOSITS
VANCOUVER - LILLOOET
AREA

B. PRICE, M.Sc.
Consulting Geologist

PROPERTY GEOLOGY:

The property has not been mapped in detail but traverses on the east side of Enterprise Creek by G.R. McKillop indicates a sequence of shattered and weakly to moderately sheared phyllite and siltstone cut by diorite dykes and/or sills. Some of the intrusive rocks have chloritic alteration and some exhibit silicification and sericitization, (Figure 6). P.Christopher observed cherty layers and minor limestone on the Free 1 claim, perhaps indicating that Bridge River Group exists in that area. On the Pike claims, which covered an area west and north of the Brew and Free claims, brief geological inspections by Werner Gruenwald, B.Sc. revealed "a thick sequence of brown to green phyllites, quartz-sericite schists, argillaceous quartzites and minor argillites"... intruded by "a series of plugs and dykes of pale green, medium-grained feldspar porphyry. The rocks on the Pike property have a general northwest-trending schistosity, and varying dips of foliation, indicating possible strong folding.

MINERALIZATION:

The extensive areas of gossan indicate that pyrite and/or pyrrhotite are ubiquitous. McKillop has noted local areas with chalcopyrite and arsenopyrite. Malachite was noted in float by Christopher. Quartz and quartz-carbonate veins are common with dimensions up to a meter wide. Veins are sheeted and in stockwork with some areas of silica flooding.

GEOCHEMISTRY:

Strong gossans in the area led to initial geochemical silt and soil sampling by Kerr, Dawson and Associates on the Pike claims in 1978, and by JMT Services on the Enterprise claims in 1981. The JMT samples are listed below to compare with the strongly anomalous values from 26 soil samples taken by Christopher in July 1985 (Figure 7).

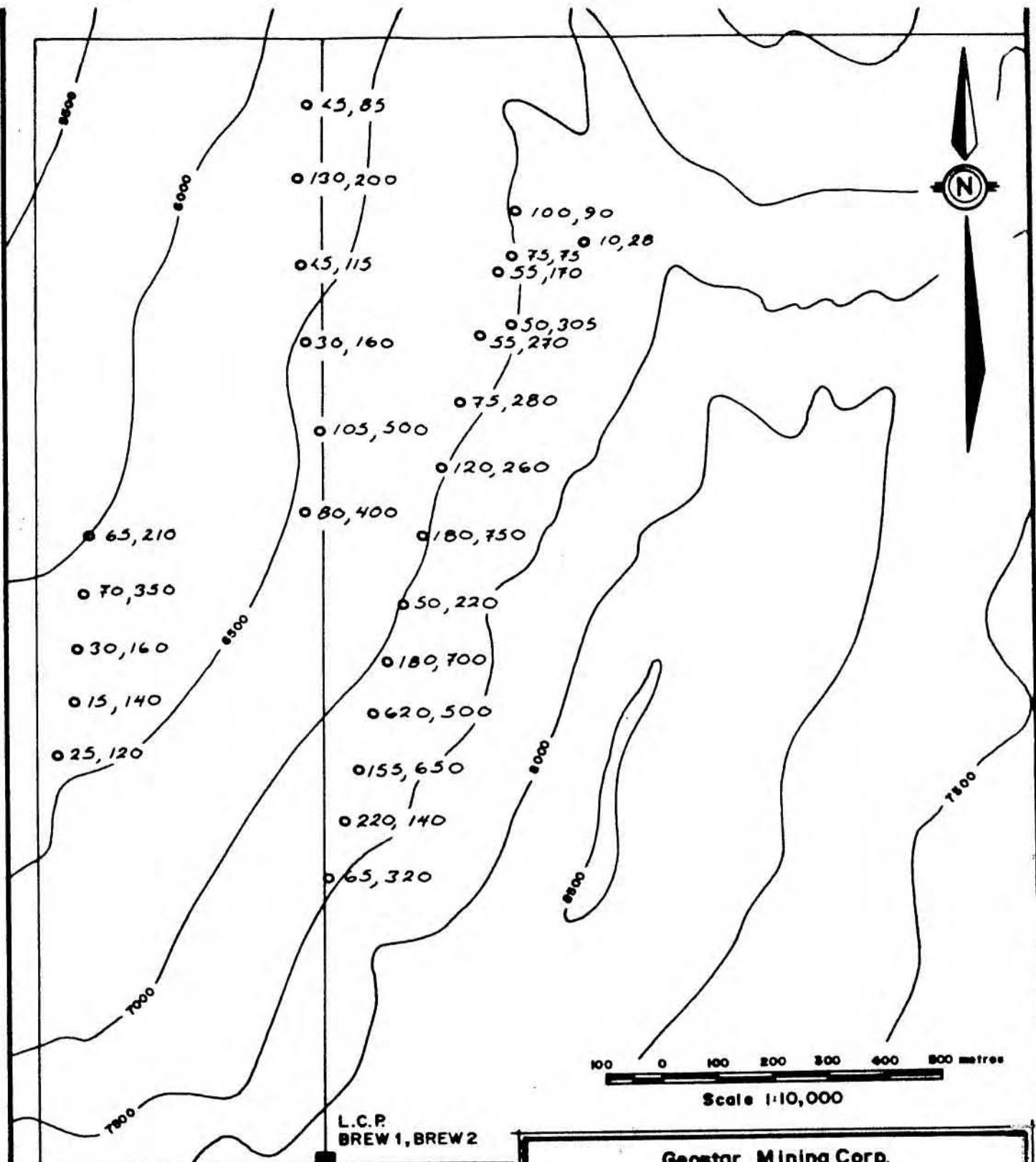
1981 SOIL/SILT SAMPLES

SAMPLE	CU	MO	PB	ZN	AG	AS	AU	W
R1229	86	1	2	85	0.1	65	5	2
R1230	100	1	2	135	0.1	100	9	2
R1231	120	1	14	330	0.1	125	320	5
H 888	66	2	4	135	0.1	110	10	1
H 890	150	23	13	140	0.1	240	38	3
H 891	295	45	27	200	1.0	730	120	2

The suite of anomalous elements suggests a porphyry copper-molybdenum system with zonation to arsenic-gold mineralization in the cupola, such as is present on the Spray claims, 10 kilometers to the south-east. A compilation of geochemically anomalous areas over the entire belt, from Enterprise Creek to Spray Creek is shown in Figure 8, and indicates the considerable potential of this belt.

DISCUSSION OF CLAIMS:

Exploration to date on the Free-Home-Brew Property is at an early stage with only reconnaissance geological and geochemical data available.

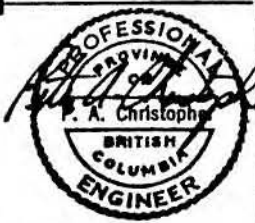


L.C.P.
BREW 1, BREW 2

100 0 100 200 300 400 500 metres
Scale 1:10,000

LEGEND

○ 220,140 Soil samples
Au ppb, As ppm



Geostar Mining Corp.

GEOCHEMISTRY PLAN

Free — Home — Brew Property

Lillooet Mining Division

NTS: 92I/12W

JULY, 1985

FIGURE 7

MAP BY: P.A. CHRISTOPHER, 1985

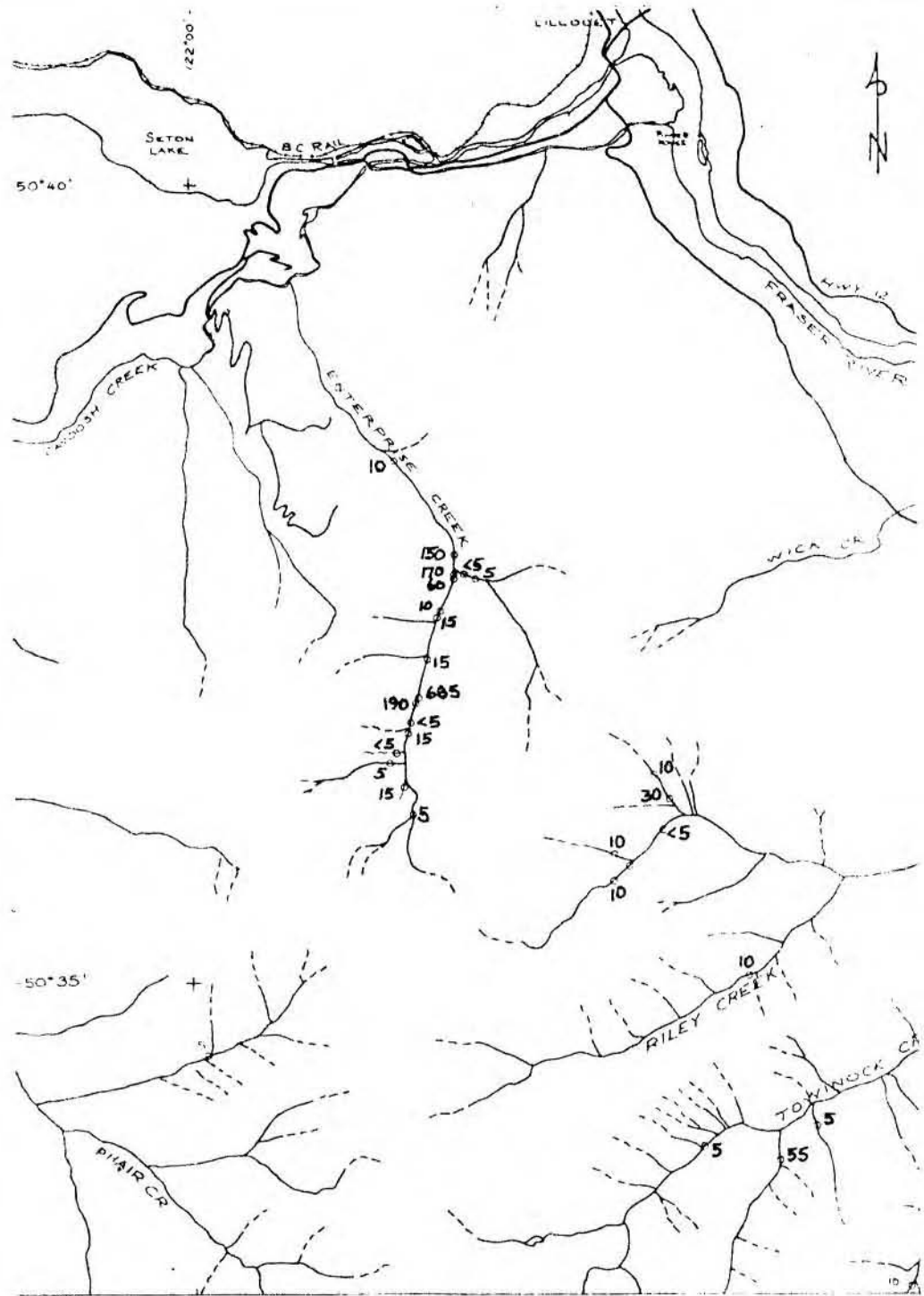


FIGURE 9

GEOSTAR MINING CORP.

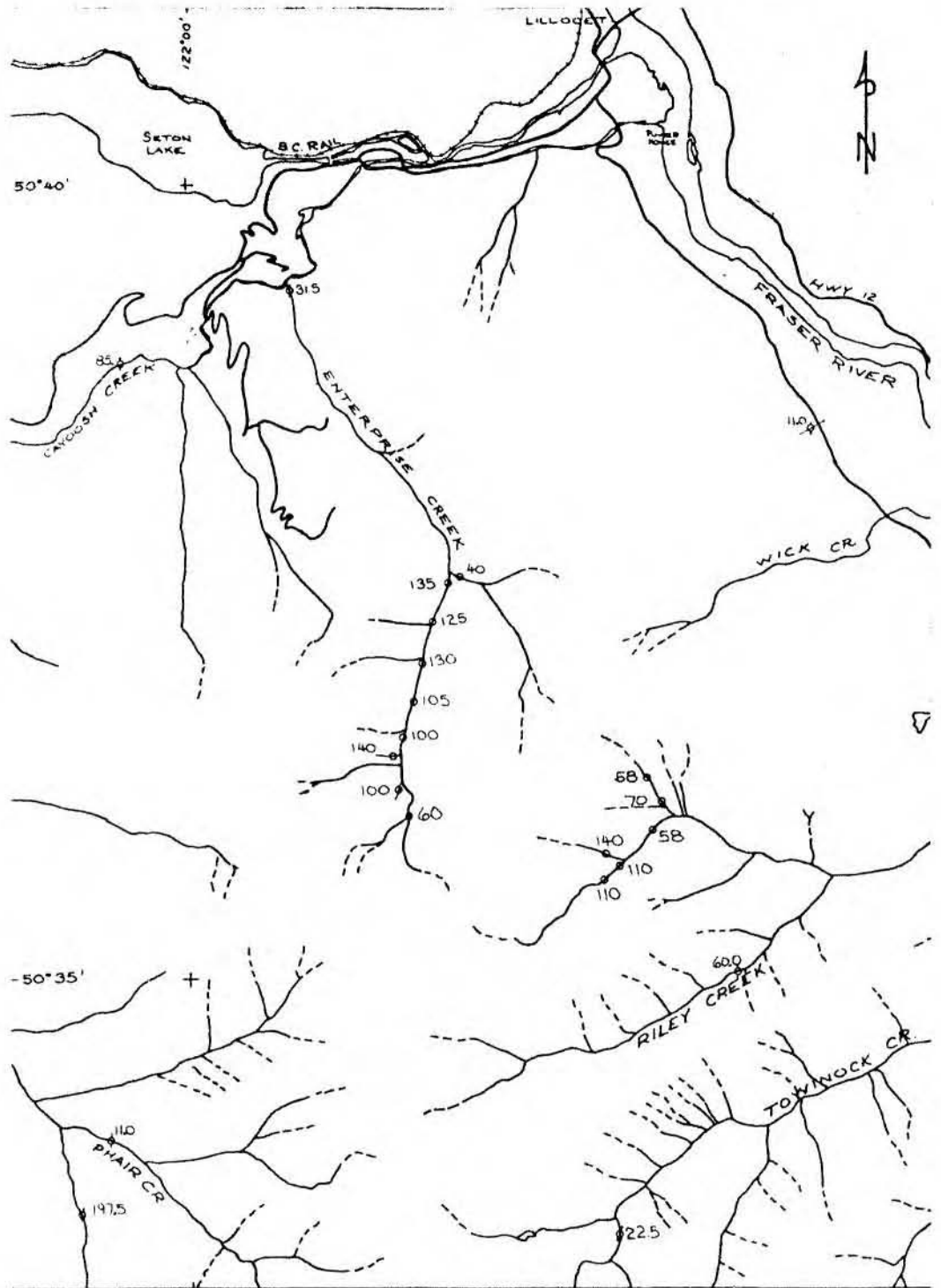
ENTERPRISE CREEK AU
 NTS 92I/12W + 92J/9E



REGIONAL GEOCHEM
 Au (ppb) in silt

B. PRICE, M. Sc.
 Consulting Geologist

Source: McKillop 1984



<p>GEOSTAR MINING CORP.</p> <p>ENTERPRISE CREEK AU</p> <p>NTS 92J/12W + 92J/9E</p> <p>0 1 2 3 4 5 km</p> <p>REGIONAL GEOCHEM</p> <p>As (ppm) in silts</p> <p>○ DUVAL ◇ G.S.C.</p>	
<p>B. PRICE, M.Sc.</p> <p>Consulting Geologist</p>	

SOURCE: MCKILLOP 1984

Regional geochemical data from Duval Corporation and from Geological Survey of Canada sampling in 1984 for the Riley and Enterprise Creek area indicate an area from 2.5 km to 5km in strike length and at least three kilometers in width, in which gold and arsenic are anomalous (Figures 9, 10).

The 1985 data indicates an area within the Brew 1 and 2 claims, which judging from the excellent gold-arsenic geochemical values in soils, may contain quartz veins with gold mineralization, such as was intersected in drilling in the Spray claims, or alternatively, could contain a dispersed gold system in an altered argillic rock, such as is present at the Carolin Mine, farther south on the Fraser Fault zone.

CONCLUSIONS AND RECOMMENDATIONS

Considering the preliminary but encouraging nature of the initial reconnaissance geochemical lines, a Stage I reconnaissance prospecting program is highly recommended. A Stage II follow-up program of geological mapping, geochemical sampling and trenching is contingent on the Stage I results. If Stage I and Stage II are successful in locating targets, an initial Stage III 500 meter drill test will be warranted. Cost estimates for the staged exploration program are presented in the following section.

respectfully submitted

Barry Price

Barry Price, M.Sc., F.G.O.C.

Consulting Geologist



BIBLIOGRAPHY LILLOOET AREA

BIBLIOGRAPHY

- Christopher, P.A., (1985); Geological Report on the Spray and Foam Claims, Lillooet Mining Division, B.C., Private report for Miramar Energy Corp.
- Duffell, S., and McTaggart, K. C., 1952. Ashcroft map-area, British Columbia. Geol. Surv. Can., Mem. 262, 122p.
- Hollister, V.F., 1979. Preliminary Report on the Geology and Geochemistry of the Tow 1 and 2 Claim Groups. Assessment Report # 7211 prepared for Duval International Corp. March 23, 1979.
- Gruenwald, Werner, (1978); Geochemical and Geological Report, Pike 1-8 Claims, Lillooet Mining Division, Assessment Report No. 6971, for Kerr, Dawson, and Associates. McKillop, G. R., 1979.
- Report on the Geology and Geochemistry of the Tow 1, 2, 3 and 4 Claims, Lillooet Mining Division. Assessment Report # 7569 prepared for Duval International Corp. September 24, 1979.
- McKillop, G. R., 1980. Report on Geological and Geochemical Surveys and Physical Work Conducted on the Tow 1, 2, 3, and 4 Claims, Lillooet Mining Division. Assessment Report 8347 prepared for Duval International Corp. October 6, 1980.
- McKillop, G. R., 1981a. Report on Diamond Drilling on the Tow #2 Claim Lillooet Mining Division. Assessment Report # 9427 prepared for Duval International Corp. August 28, 1981.
- McKillop, G. R., 1981b. Report on Diamond Drilling on the Tow # 1 Claim, Lillooet Mining Division. Assessment Report 9405 prepared for Duval International Corp. August 6, 1981.
- McKillop, G. R., 1981c. Copper Harrison Report, Brief Summary of 1981 work and results. private company report for Duval International December 22, 1981.
- , 1985. Private Report on Brew Claims.
- Monger, J.W., (1985); Structural Evolution of the Southwest Intermontane Belt, Ashcroft and Hope Map Areas, British Columbia, in: Current Research, Part A, G.S.C.Paper 85-1A, p.349-358, 1985
- Price, B.J., (1981); Summary Report, Lillooet River Project, 1980 Exploration Season and 1981 Budget Presentation., Private Report dated February 1981 for Territorial Gold Placers Ltd.
- Roddick, J.A., and Hutchison, W.W., 1973. Pemberton (East Half) map-area, British Columbia. Geol. Surv. Can., Paper 73-17, 21p.

APPENDIX I
 ITEMIZED COST STATEMENT
BREW CLAIMS, LILLOOET M.D.

FIELD TIME:

Peter A. Christopher 2 days @ \$300ea. \$ 600.00
 (MAY 27, 28, 1985, Including Mob/Demob.)

OFFICE TIME (REPORT):

B.J.Price, M.Sc., 2 days June 29,30, 1986 600.00

DISBURSEMENTS:

Truck rental; P.A.Christopher, 2 days @ \$50 100.00
 Helicopter Time (Corporate Helicopters Ltd.)
 1 Hour @ \$465 hr. (incl fuel) 465.00
 Drafting (Barb Meneley) 56.25
 Office Supplies & Photo Copies 25.00

TOTAL \$1,846.25

Amount applied to claims (as per work application) \$1,600.00

respectfully submitted

Barry J. Price

Barry J. Price, M.Sc. F.G.A.C.
 Consulting Geologist.



SUGGESTED BUDGET
1986 EXPLORATION PROGRAM - BREW CLAIMS
 LILLOOET MINING DIVISION

STAGE I. PROSPECTING AND GEOCHEMICAL:

PERSONNEL

PROSPECTOR	6 DAYS @ \$200EA.	\$ 1200
ASSISTANT	6 DAYS @ 150EA.	900
GEOLOGIST	6 DAYS @ 300EA.	1800

<u>ROOM & BOARD</u>	18 MAN DAYS @ \$50EA.	900
-------------------------	-----------------------	-----

TRANSPORTATION

TRUCK RENTAL	9 DAYS @ \$ 80EA.	720
HELICOPTER	6 HOURS @ \$500 EA.	3000

GEOCHEMICAL ANALYSES

300 SAMPLES @ \$10 EA	3000
-----------------------	------

<u>FIELD SUPPLIES</u>	300
-----------------------	-----

REPORT PREPARATION

	<u>1500</u>
TOTAL	\$ 10,320
CONTINGENCY	<u>4,680</u>

STAGE I TOTAL BUDGET:	\$ <u>15000</u>
-----------------------	-----------------

STAGE II. GEOCHEMICAL, GEOLOGICAL, TRENCHING (CONTINGENT)

<u>GEOLOGICAL SURVEY</u>	\$ 5000
--------------------------	---------

GEOCHEMICAL SAMPLING	7500
----------------------	------

TRENCHING & BLASTING	<u>7500</u>
----------------------	-------------

TOTAL	\$ 20,000
CONTINGENCY	<u>2,500</u>

STAGE II TOTAL BUDGET	\$ <u>22,500</u>
-----------------------	------------------

STAGE III. DIAMOND DRILLING (CONTINGENT ON STAGES I & II)

DIAMOND DRILLING	500 METERS @ \$130EA.	\$65,000
	(ALL INCLUSIVE)	

GEOCHEMICAL ANALYSES	5,000
----------------------	-------

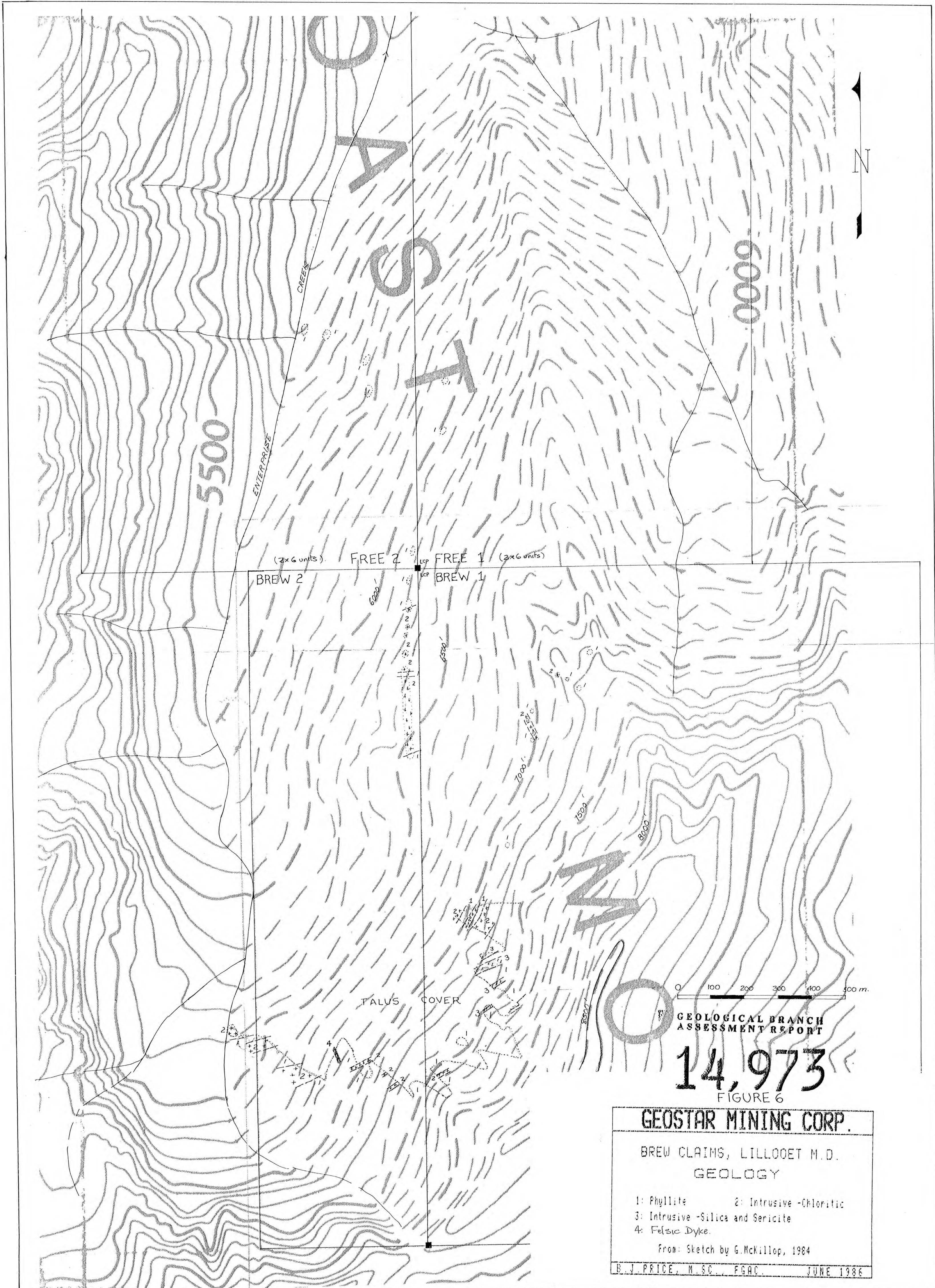
CAMP, ENGINEERING ETC.	15,000
------------------------	--------

TOTAL	\$85,000
CONTINGENCY	<u>15,000</u>

STAGE III TOTAL BUDGET	\$ <u>100,000</u>
------------------------	-------------------

<u>TOTAL, STAGE I, II, III</u>	<u>\$137,500</u>
--------------------------------	------------------

Barry J. Price
 BARRY J. PRICE, M.S.C., F.G.A.C.



GEOLOGICAL BRANCH
ASSESSMENT REPORT

14,973
FIGURE 6

GEOSTAR MINING CORP.

BREW CLAIMS, LILLOOET M.D.
GEOLOGY

1: Phyllite 2: Intrusive -Chloritic
3: Intrusive -Silica and Sericite
4: Felsic Dyke.

From: Sketch by G. McKillop, 1984

B. J. PRICE, M.S.C., F.G.A.C. JUNE 1986