

FILE:BOOMER.A86

DRILLING ASSESSMENT REPORT

on the

Spring 3-1466, Boomer 1-2425  
Boomer 2-2426, Boomer 3-2427  
Mineral Claims  
Similkameen Mining Division,

N.T.S. 92 H 16E

Lat. 49° ~~47'00"~~ 46.4' Long. 120° 08'W

for

Boomer Resources Inc.  
507-1541 West Broadway Ave.  
Vancouver, B.C. V6J 1W7

Owner and Operator

FILMED

by

Alex Burton, P.Eng.  
Burton Consulting Inc.  
810-626 West Pender Street,  
Vancouver, B.C. V6B 1V9

**GEOLOGICAL BRANCH  
ASSESSMENT REPORT**

July 7, 1986

**14,989**

**BURTON CONSULTING INC.**

TABLE OF CONTENTS

Title Page	
Table of contents	
Introduction	
Property Definition	
Summary of Work Done	
Cost Statement	
Location Map	
Drill and Claim Map	
Site Plan	
Section Looking West Map	
Diamond Drill logs S-85-1	
	S-85-2
	S-85-3
Assay Certificates	
Summary Report	
Qualifications	

INTRODUCTION

The Spring Property of Boomer Resources Inc. is on upper Trout Creek between Princeton and Peachland, B.C.

Access is by gravel road built to Forest Access Road standards from either Princeton or Peachland. It is about an hours drive to the drill site from either city, and can be done easily in an automobile.

The drill site was previously cleared off during placer mining operations so no tree clearing or surface disturbance was required.

PROPERTY DEFINITION

The claims area had been explored before during the search for "porphyry type" mineralization as a spin off from the Brenda Mines development. However no exploration had been done for an epithermal type of precious metals exploration. Consulting Geologist F. M. Smith through Golden Porphyrite Ltd. examined the property for Boomer, recognized the characteristic alteration and recommended a fence of diamond drill holes across the zone.

**BURTON CONSULTING INC.**

The claims and the features were surveyed by Interior Exploration so that consulting geologist Alex Burton, P. Eng. could lay out the diamond drill hole collar positions to correctly intersect the epithermal alteration zone. Golden Porphyrite Ltd. supervised the drilling program.

The drill holes crossed the zone from footwall to hanging wall across its full width. In the mineralized sections there was visible sphalerite, pyrite, and galena. Assays of gold and silver were sub economic. The zone needs further exploration to outline the most favourable structural position for the best mineralized shoot in the structure, and then to be diamond drilled.

Boomer Resources Inc. continue to hold the Spring property.

#### SUMMARY OF WORK DONE

Hole collars were prepared and then three diamond drill holes were completed in a "fence" across one zone.

Rogers Drilling used a surface skid mounted Longyear 38 diamond drill equiped with "N" core barrel and face

**BURTON CONSULTING INC.**

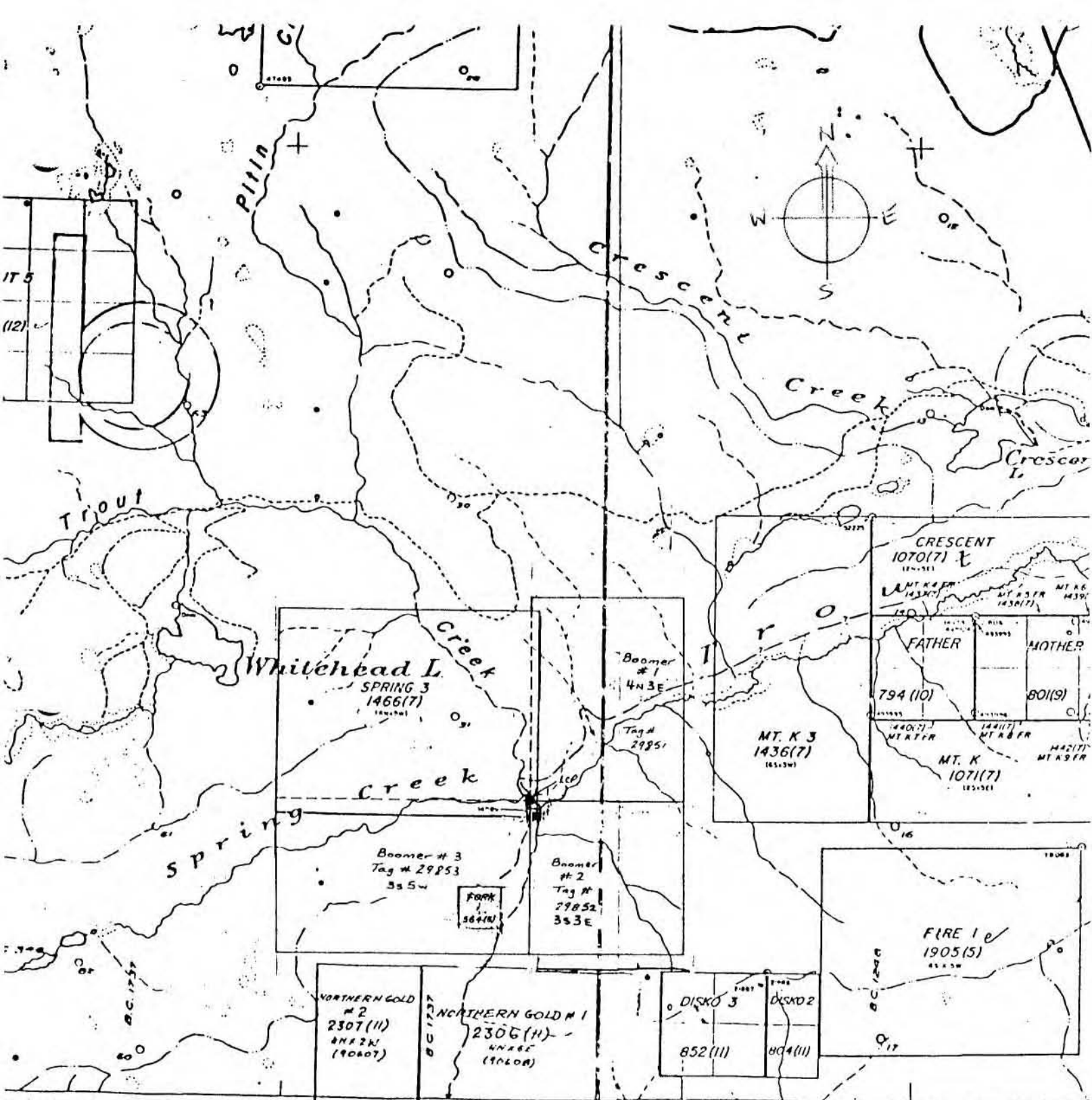
discharge bits. Hole S-85-1 was 45.72 m, hole S-85-2 was 45.72 m, and hole S-85-3 was 45.72 m long for a total of 137.16 metres of drilling. The drilling was on the Spring 3 claim.

The drill core is stored at Harding Road in Westbank, B.C., phone 768 5613 or 734 2755.

Core was logged by A. Burton, P.Eng.

COST STATEMENT

Rogers Drilling	\$14,351.02
Burton Consulting Inc.	3,735.05
Interior Exploration	2,360.96
Golden Porphyrite Ltd.	3,398.31
Travel	344.86
Vehicle Rental	<u>300.00</u>
TOTAL	<u>\$24,490.20</u>



TO SOUTH SEE MAP 92H/9E

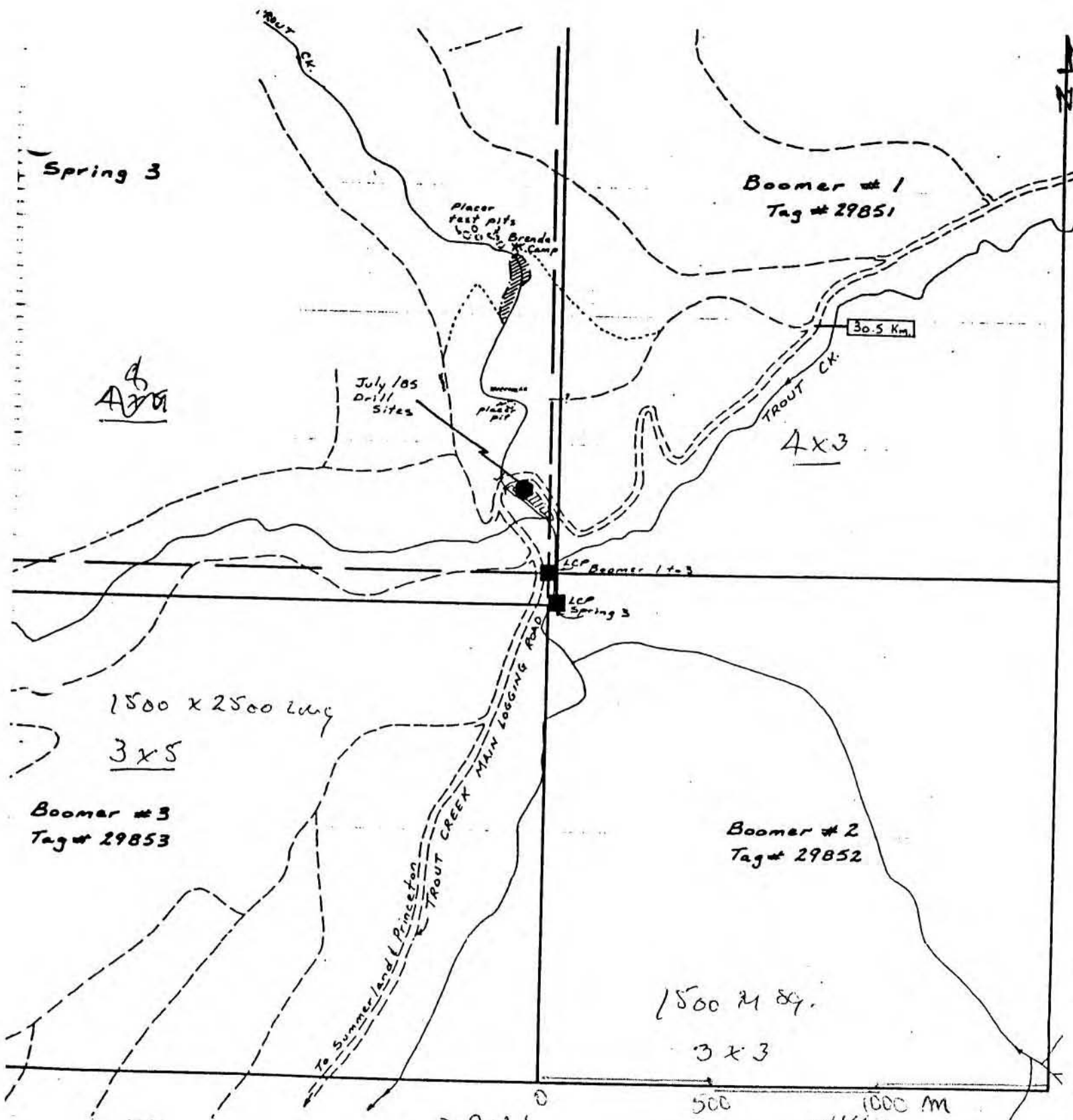
# MINERAL TITLES REFERENCE MAP

LOCATION MAP  
Boomer #1 to 3  
Tag Nos.  
29851 to  
29853

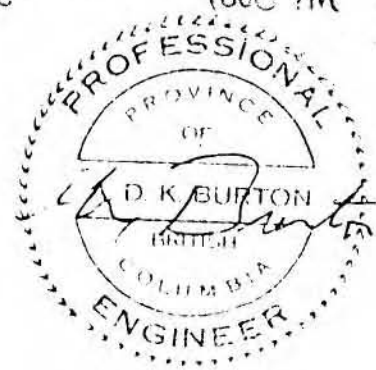
NTS MAP NO.  
92H/16E



MAP ①



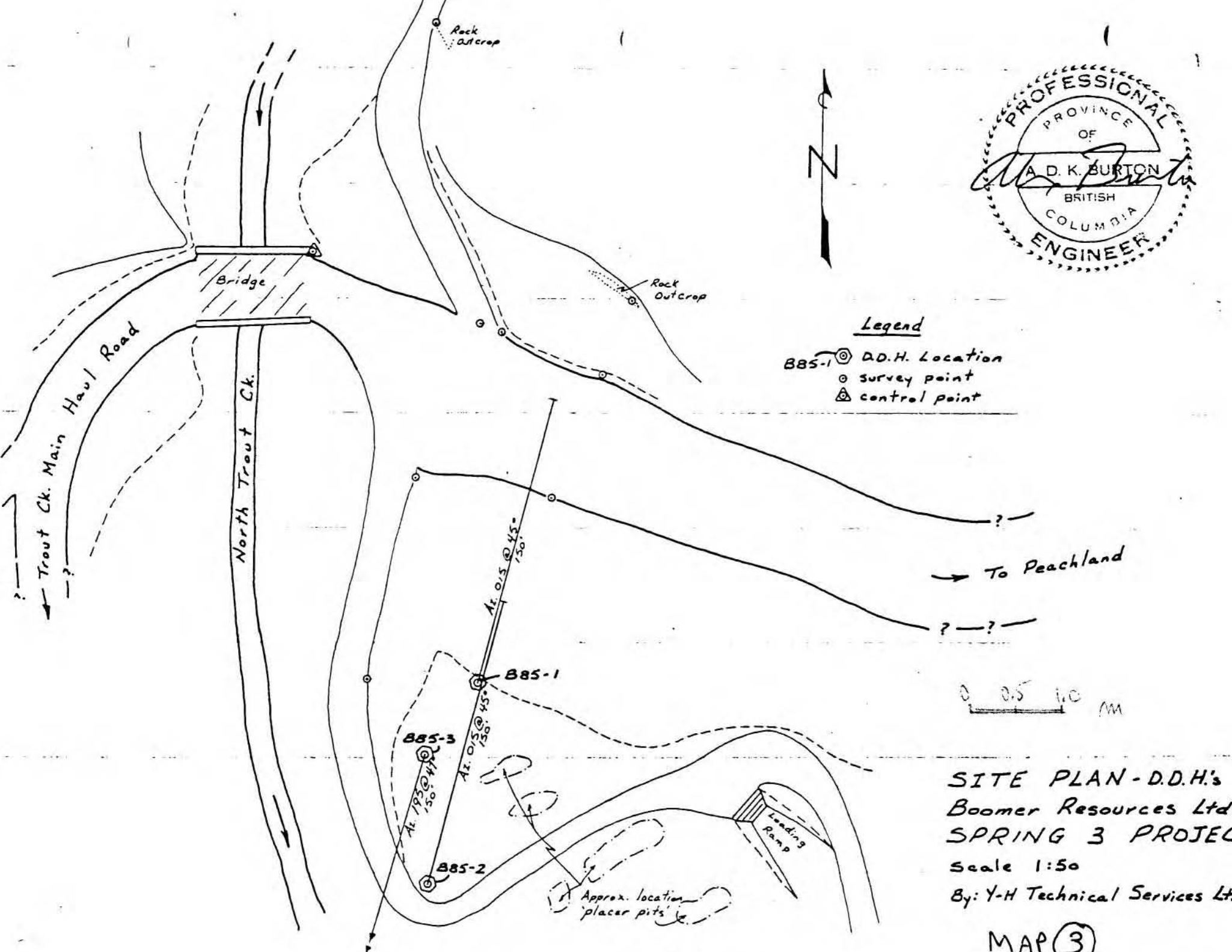
DRILL  
 AND  
 CLAIM  
 MAP (2)





Legend

- B85-1 ⊙ D.D.H. Location
- survey point
- △ control point

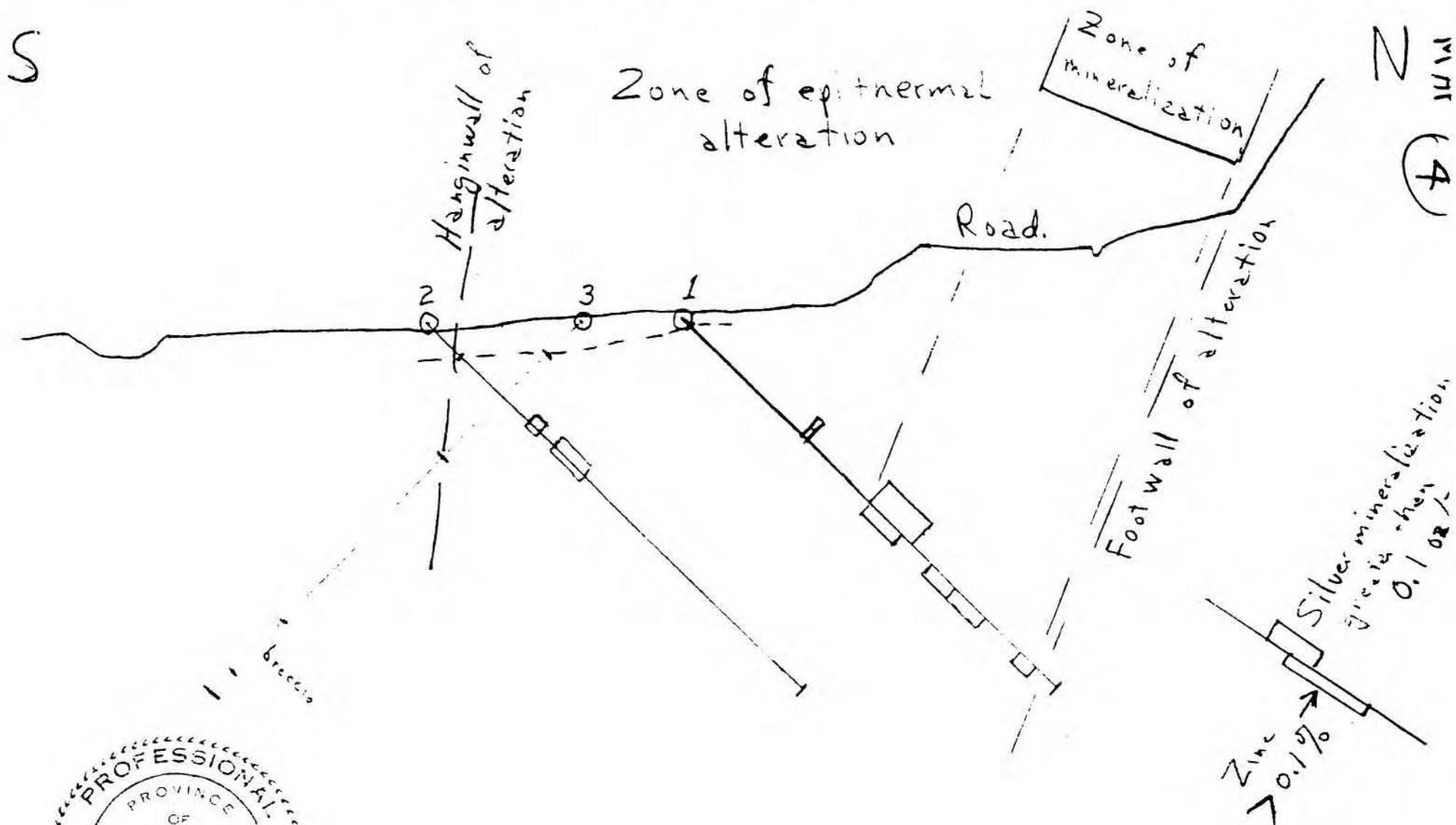


SITE PLAN - D.D.H.'s  
Boomer Resources Ltd.  
SPRING 3 PROJECT  
Scale 1:50  
By: Y-H Technical Services Ltd.

MAP ③

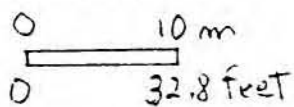


# Section Looking West



Diamond drill holes  
in true section

Scale  
1:850



Boomer Resources  
Spring Property  
Trout Creek, B.C.

A. Burton  
Sep 1935



CONVERSION

"x" feet x 0.3048 = metres  
(10) 10 feet x 0.3048 = 3.04 m.

BOOMER RESOURCES LTD. - SPRING PROPERTY - Trout Creek, B.C.

D.D.Hole S-85-1                      Brg. N23E (True)                      Dip -45 deg.                      July 17, 1985

0	4	Casing
4	6.5	Weathered
6.5		F.P.Porph (feldspar porphyry granite) contains up to 1" phenocryst pink orthoclase, quartz eyes to 1/4" mafics bleached -alteration of silica veinlets, green & white sericitic illite clays
6.5	9	Mild alt
9	12	Med alt
12	22	Med alt & breccia
22	25.5	Med alt & breccia & clay
25.5	26	Grey silica vein
26	32	Strong alt & breccia & clay plus sulphides
32	34	Mild alt, tan felds.
34	36	Med alt., fine felty texture grey-green
36	42	Mild alt. - ie: pink feldspar prominent - fracture with sulphides at 40.5
42	54	Strong alt, dissem sulphides - also minor hematite
54	64	Mild alt
64	69	Strong alt, 66 - 1/2" gouge clay parallel to core - lots clay but pink feldspar still visible
69	76.5	Hb Dio - hornblend diorite - strongly altered breccia & clay - plenty chlorite as well as silica & some sulphides
76.5	82	F.P. - strongly clayed & altered pink felds phenos visible
82	129	F.P. - mild alt, -sulphide veinlets
129	136	- breccia & clays strong alt.
136	142	- mild alt.
142	145	Dyke - chloritic, pyrite - probably greenstone dyke
145	150	F.P. - almost unaltered



(6)

BOOMER RESOURCES LTD. - SPRING PROPERTY, Trout Creek, B.C.  
DIAMOND DRILL HOLE 85-2 North @ -45 Degrees July, 1985

0	13.5	Casing & boulders
13.5		Bedrock
13.5	18.5	Breccia & strong alt. clays of fine diorite (no phenos)
18.5	20	Grey black gouge
20	23	Silicified grey quartz vein
23	25	Strong alt. Q.F.P.
25	25.5	Silicified vein
25.5	50.5	Good alt
	41	- sulphide stringer galena grey copper, sphalerite?
	43	45 Sulphides & grey gouge parallel to core
	50.5	Sulphides, grey copper
50.5	52.5	Q.F.P. med alt.
52.5	81.5	Q.F.P. strong alt. white clay noticeable
	52.5	67 Length with most sulphide stringers
81.5	150	Coarse pheno's of Q.F.P.
	81.5	90 Brecciated, strong alteration & good clay in matrix but pheno's not altered, breccia fragments not altered
	90	95 No clay alt. but "shearing" in Q.F.P.
	95	146.5 Good alt. plus sulphide lenses
	146.5	150 Q.F.P. mainly fresh, prominent quartz eyes, some fractures, some pyrite



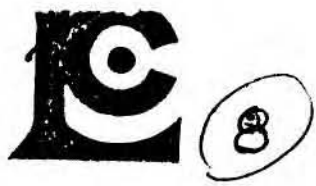
7

BOOMER RESOURCES LTD. - SPRING PROPERTY, Trout Creek, B.C.

DIAMOND DRILL HOLE DDH 85-3      South @ -45 degrees      July, 1985

0	10	Boulder	
10	11	Boulder	
11	12	Overburden	
12	13	Boulder	
13	55.5	Bedrock	
		Q.F.P. quartz, orthoclase phenocrysts, moderate mafics, some	
		13    34    Moderate alt, fault @ 20'	
		34    53    Mild alt.	
		53    55.5    Medium alt.	
55.5	57	Black fault	
57	77	Fine grained Q.F.P. breccia, mild alt.	
77	79.5	Dyke	
79.5	86	Fine grained Q.F.P. minor breccia, slightly altered	
86	96	Chloritic Q.F.P.	
6	98	Q.F.P. coarse pink feld phenos	
→8	119	Diorite white small feld phenos rock fine grained	
		breccia 104.5 - 106 mod alt.	
		breccia 110.5 - 111 mod alt.	
		quartz vein 116 - 118 barren	
119	120	Q.F.P. fresh, minor alt.	
120	141	Breccia - <u>mainly diorite</u> some coarse Q.F.P.	
		- like diatreme Rocks - mostly minor alt. 120 - 127	
		mostly moderate alt 127 - 141	
		about 127 rock type changes from predominately diorite	
		to mainly Q.F.P.	
141	150	Q.F.P. - fresh mod. alt. 142 & 143	





# Chemex Labs Ltd.

212 Brooksbank Ave.  
 North Vancouver, B.C.  
 Canada V7J 2C1  
 Telephone: (604) 984-0221  
 Telex: 043-52597

Analytical Chemists • Geochemists • Registered Assayers

**CERTIFICATE OF ASSAY**



TO : GOLDEN PORPHYRITE LTD.

218 - 744 W. HASTINGS ST.  
 VANCOUVER, B.C.  
 V6C 1A5

CERT. # : AB514483-001-A  
 INVOICE # : 18514483  
 DATE : 8-AUG-85  
 P.O. # : NONE

*Summer: Spring*

Sample description	Prep code	Au FA oz/T	Ag FA oz/T	Pb %	Zn %	Cu %
RS-1 B-01 22.0 - 25.5	207	<0.002	0.08	0.17	0.02	<0.01
B-02 28.5 - 36	207	<0.002	0.03	0.04	0.03	<0.01
B-03 26 - 32	207	<0.002	0.04	0.02	0.12	<0.01
B-04 32 - 34	207	<0.002	<0.01	0.02	<0.01	<0.01
B-05 34 36	207	<0.002	0.01	0.02	0.03	<0.01
B-06 36 39	207	<0.002	0.03	0.03	0.04	<0.01
B-07 39 41	207	<0.002	0.05	0.06	0.08	<0.01
B-08 41 47.5	207	<0.002	0.03	0.01	0.02	<0.01
B-09 47.5 49.5	207	<0.002	0.15	0.14	0.32	<0.01
B-10 49.5 54	207	<0.002	0.03	0.06	0.13	<0.01
B-11 64 69	207	<0.002	0.08	0.05	0.14	<0.01
B-12 76.5 82	207	<0.002	0.13	0.16	0.44	0.01
B-13 82 89	207	<0.002	0.11	0.28	0.62	0.02
B-14 89 93	207	<0.002	0.15	0.04	0.08	<0.01
B-15 93 96.5	207	<0.002	0.03	<0.01	0.15	<0.01
B-16 96.5 99	207	<0.002	0.03	0.08	0.24	<0.01
B-17 99 100	207	<0.002	0.06	0.24	0.31	<0.01
B-18 100 105	207	<0.002	0.03	0.06	1.59	<0.01
B-19 105 110	207	<0.002	0.09	0.08	1.39	<0.01
B-20 110 115	207	<0.002	0.02	0.03	0.32	<0.01
B-21 115 122.5	207	<0.002	0.05	0.07	0.27	<0.01
B-22 122.5 129	207	<0.002	0.01	0.01	0.08	<0.01
B-23 129 136	207	<0.002	0.01	0.01	0.18	<0.01
S-1 B-24 136 142	207	<0.002	0.07	0.10	1.04	<0.01
-2 B-25 142 2.0	207	<0.002	<0.01	<0.01	0.04	<0.01
B-26 2.0 2.3	207	<0.002	0.03	<0.01	0.02	<0.01
B-27 2.5 25.5	207	<0.002	0.01	<0.01	0.02	<0.01
B-28 41 45	207	<0.002	0.22	0.03	0.49	<0.01
B-29 45 50.5	207	<0.002	0.05	0.02	0.08	<0.01
B-30 50.5 52.5	207	<0.002	0.22	0.04	0.13	<0.01
B-31 52.5 57.5	207	<0.002	0.16	0.03	0.14	<0.01
B-32 57.5 62.5	207	<0.002	0.11	0.29	0.23	<0.01
B-33 62.5 67	207	<0.002	0.03	0.02	0.10	<0.01
B-34 95 100	207	<0.002	0.03	0.01	0.05	<0.01
B-35 100 111	207	<0.002	0.03	0.01	0.03	<0.01
B-36 111 120	207	<0.002	0.03	0.01	0.04	<0.01
B-37 120 127	207	<0.002	0.07	0.01	0.01	<0.01
B-38 127 140	207	<0.002	0.05	0.02	0.03	<0.01
-2 B-39 140 146	207	<0.002	0.05	0.01	0.08	<0.01
-3 40 30 - 35	207	<0.002	0.01	<0.01	0.04	<0.01

.....  
 Registered Assayer, Province of British Columbia





9

# Chemex Labs Ltd.

Analytical Chemists • Geochemists • Registered Assayers

212 Brooksbank Ave.  
North Vancouver, B.C.  
Canada V7J 2C1

Telephone: (604) 984-0221  
Telex: 043-52597

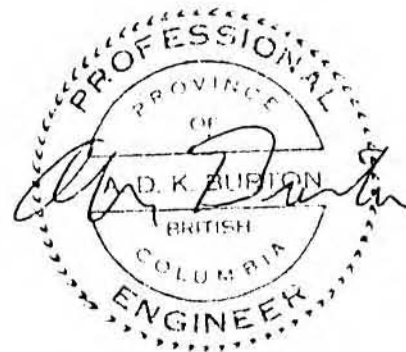
## CERTIFICATE OF ASSAY

TO : GOLDEN PORPHYRITE LTD.

218 - 744 W. HASTINGS ST.  
VANCOUVER, B.C.  
V6C 1A5

CERT. # : A8514483-002-A  
INVOICE # : I8514483  
DATE : 8-AUG-85  
P.O. # : NONE

Sample description	Prep code	Au FA oz/T	Ag FA oz/T	Pb %	Zn %	Cu %	
85-3 B-41	207	<0.002	<0.01	0.01	0.03	<0.01	--



*[Handwritten Signature]*

.....  
Registered Assayer, Province of British Columbia



SUMMARY REPORT

on the  
SPRING PROPERTY,  
Trout Creek Area  
Between Peachland and Princeton, B.C.

for

Boomer Resources Inc.,  
507 - 1541 West Broadway Avenue,  
Vancouver, B.C.  
V6J 1W7

by

ALEX BURTON, P. Eng.,  
810 - 626 West Pender Street,  
Vancouver, B.C.  
V6B 1V9

SEPTEMBER, 1985

**BURTON CONSULTING INC.**

The Upper portions of Trout Creek have a history of producing placer gold from at least three and possibly more locations. Three of the known placer locations coincide with structural lineaments that also display features typical of epithermal precious metal deposits. The structures are zig-zag faults which develop fault breccia on the "zags" and the clayed alteration zones on the "zigs". Some of the fault breccias have been previously mapped as diatremes. One of these alteration features was drilled to prove the existence of the "low pH alteration zone" found associated with mineralization. This zone was drilled across the structure with a fence of three diamond drill holes and did cross a well developed low pH alteration zone from footwall to hangingwall. The epithermal zone was mineralized with gold, silver, zinc and lead. A technical success that proved the concept, but, by chance did not cut the main ore zone. Now that the concept is proven further work is required to precisely locate the oreshoot within the zone. The several structural lineaments each need to be prospected, mapped, trenched with a backhoe and then run with an I.P. Survey.

With this type of program we can identify the presence and shape of the zone that carries the mineralization

**BURTON CONSULTING INC.**



with excellent predictability and good survey accuracy. We still do not have the ability to predict the grade.

After all the surveys have been evaluated a decision can be made on which ones to drill.

Costs for the complete surveys up to the drilling stage for one zone would be in the \$20,000 to \$30,000 range. For the several zones such as on the Spring Property, costs could come to \$60,000 before drilling.

Costs of drilling each zone could be \$20,000 to \$25,000 or say \$75,000 for drilling three zones.

I believe your Spring Property on Trout Creek has merit and good potential for an economic epithermal gold-silver deposit.

If you wish further discussions with your Directors, I will be happy to attend a meeting at your convenience. In addition, I feel the Property has enough merit to warrant taking your company public. I will write a Qualifying Report if you wish.

**BURTON CONSULTING INC.**

C E R T I F I C A T E

I, Alex Burton do hereby certify that I am an independent Consulting Geologist with offices at 810 - 626 West Pender Street, Vancouver, B.C. V6B 1V9.

**I FURTHER CERTIFY THAT:**


1. I am a geology graduate of the University of British Columbia and am a registered Professional Engineer in B.C. with Certificate No. 6262, Fellow of the Geological Association of Canada, and member of the Association of Exploration Geochemists.

2. I have practised my profession for many years both as an independent consultant and in senior managerial capacity for major mining companies in Canada and other countries.

3. I have no personal interest in the property or shares of BOOMER RESOURCES INC., nor do I expect to receive directly or indirectly any interest in such property or securities.

4. I have visited the property, laid out the drill hole collars, logged the drill core and marked sections for assay.

Dated this 7th day of July, 1986 in Vancouver, B.C.

  
ALEX BURTON, P. Eng.  
Consulting Geologist

  
A. D. BURTON  
BRITISH  
COLUMBIA  
ENGINEER

**BURTON CONSULTING INC.**