

PROSPECTING REPORT  
WALLY #1 CLAIM  
COWICHAN LAKE AREA, VANCOUVER ISLAND  
BRITISH COLUMBIA

by

P.E. FOX Ph.D. P.ENG.  
1409-409 Granville Street  
Vancouver, B.C.

July 5, 1986

OWNER: ORBEX MINERALS LIMITED  
OPERATOR: NIS :92015E  
Alberni ~~ALBERNI~~ MINING DIVISION  
48° 57' N, 124° 35' W.  
55.3' 35.7'

FILMED

GEOLOGICAL BRANCH  
ASSESSMENT REPORT

15,015

SUP RECORDER  
RECEIVED  
JUL 15 1986  
M.R. # ..... \$ .....  
VANCOUVER, B.C.

## CONTENTS

Introduction .....	1
Location .....	1
Access .....	1
Topography .....	1
Property .....	1
History .....	4
General Geology .....	4
Field Observations .....	4
Conclusions .....	5
Statement of Expenditures .....	5
Certificate .....	7

## TABLES

Table 1 Analysis for Cu, Ag, Au .....	6
---------------------------------------	---

## ILLUSTRATIONS

Figure 1 Location Map .....	2
Figure 2 Claim Map .....	3
Figure 3 Surface Plan .....	In pocket

## Introduction

Prospecting work described herein was done on June 15 and 16, 1985 to evaluate the gold content of copper-bearing skarn zones and a series of altered volcanic rocks exposed along abandoned mining and logging roads and on the north fork of Horse Creek. Many old workings, now largely slumped and overgrown with vegetation, provide exposures of chalcopyrite-bearing skarn developed in calcareous rocks of the Quatsino limestone and Bonanza Group volcanic rocks. Representative samples were selected and analyzed for gold.

## Location

The Wally #1 claim is located on south-central Vancouver Island approximately 110 km northwest of Victoria and 10 km west of Cowichan Lake (Figure 1). The claim is situated on west slopes of Parker Creek between the north and south branches of Horse Creek. Elevations range from 300 m to 600 m above sea level.

## Access

The general area of the Wally #1 claim is accessible by highway from Nanaimo or Victoria to Duncan, then by highway 18 to Youbou on the north shore of Cowichan Lake. Highway distances from Nanaimo and Victoria to Youbou are each approximately 75 kilometres.

The property is readily accessible to within 1.5 km by approximately 40 km of main and branch logging roads from Youbou, the terminus of highway 18. Most access roads are in old logging areas but remain in fair condition. The final 1.5 km of road to the claim is now impassable due to a bridge washout on Horse Creek.

## Topography and Vegetation

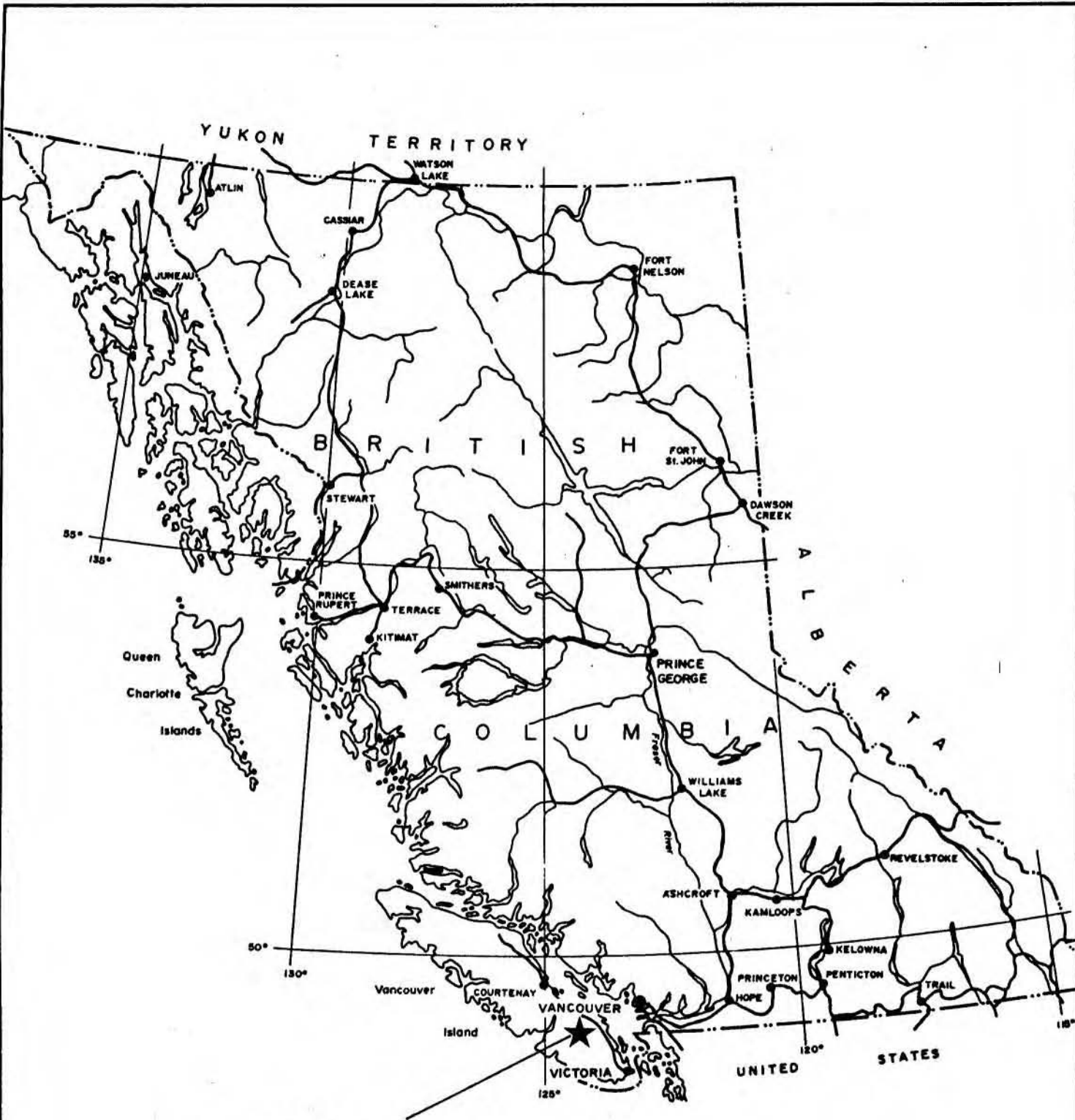
The claim is situated on southeast slopes bounded to the north and south by branches of Horse Creek. Slopes are relatively steep over most of the claim but moderate somewhat at the northwest corner.

The entire claim, except for the extreme northwest corner is forested with large stands of fir, hemlock and cedar. Undergrowth, consisting of huckleberry, salal, fern and sapplings is generally light.

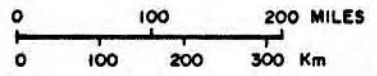
## Property

The property consists of one mineral claim (Figure 2) described as follows:

<u>Name</u>	<u>Record No.</u>	<u>No. Units</u>	<u>Expiry Date</u>
Wally 1	2050	9	April 16, 1986



WALLY #1 CLAIM



<b>PROPERTY LOCATION PLAN</b>			
WALLY # 1 CLAIM			
FOX GEOLOGICAL CONSULTANTS LTD.			
DATE		N.T.S.	Dwg. No.
5/7/86		92C15	1

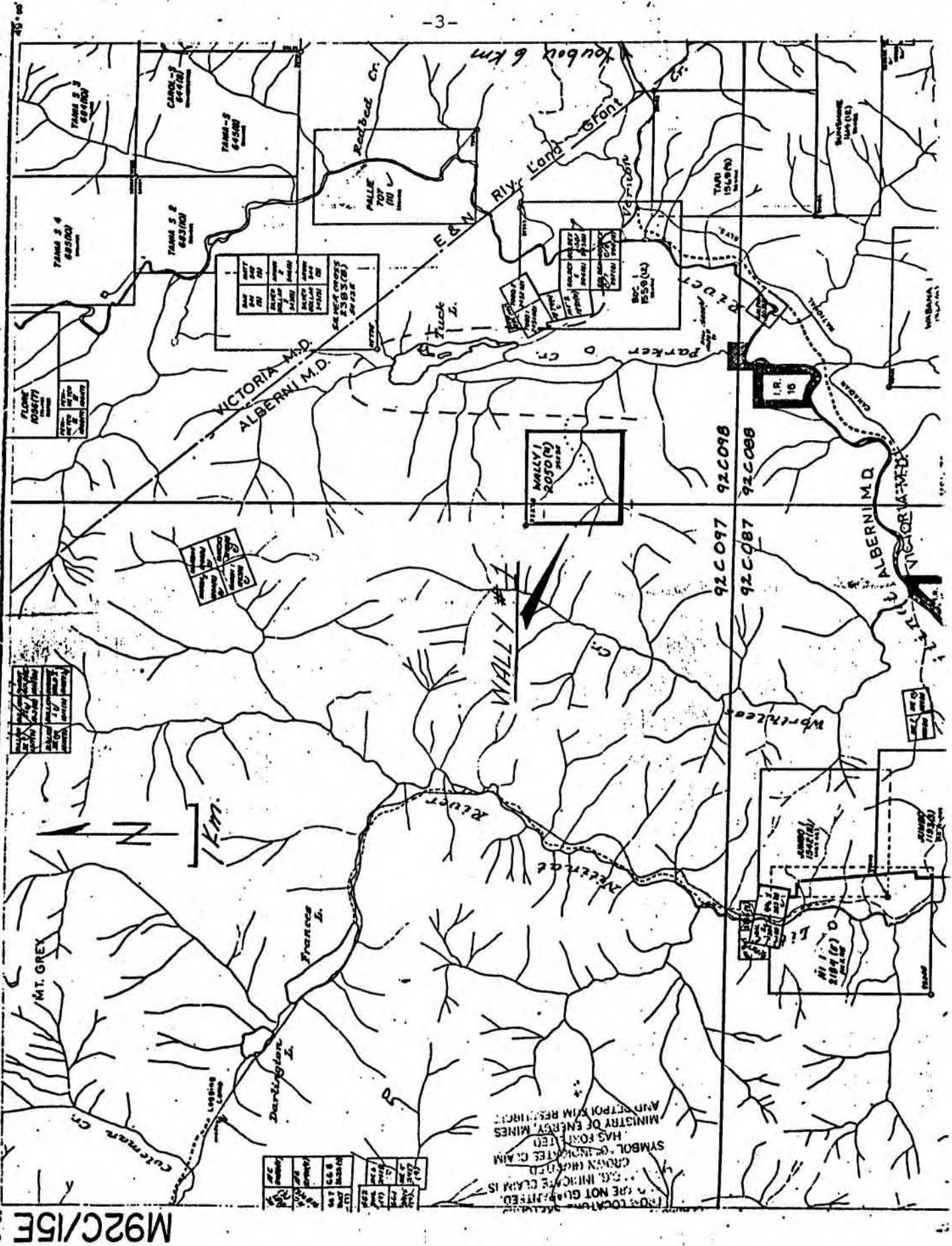


Figure 2. Claim map, Wally #1 claim.



The claim was staked by R. Cameron on April 4, 1984 and transferred to Orbex Minerals Limited, 1409-409 Granville Street, Vancouver, B.C. by Bill of Sale dated September 7, 1984. Prospecting work done here was completed on behalf of Orbex Minerals Limited.

### **History**

The area now covered by the Wally #1 claim has been explored intermittently since 1930, when the Southern Cross claims were staked to cover a skarn zone mineralized with copper and magnetite. During 1941-42 the property was explored by Bralorne Mines Ltd. Their work included surface sampling and drilling of six holes totalling 471.5 metres.

In 1953 the property was re-located as the Bornite claims and were mapped and sampled by American Standard Mines Ltd. In 1955 the property was staked by Nadira Mines Ltd. From 1955 to 1960 they conducted exploration programs which included geological mapping, geophysical surveys, surface pitting and trenching, drove a 102-foot adit, completed 3628 m of diamond drilling in 42 holes and surface mined 5,142 tons of copper ore. The ore was milled at the Cowichan Copper Company's mill at Cowichan Lake, producing 261 tons of copper concentrate.

In 1969 Amax Exploration staked the Rob claims to cover the mineral showings and the surrounding area. They conducted geological mapping, soil and silt geochemical surveys, hand and bulldozer trenching, and rock sampling.

During 1971-72 the Rob claims were optioned by Dictator Mines who conducted further geochemical, geophysical and geological surveys. They drilled three holes for a total of 308 m.

There is no reported work on the ground since 1972 nor did previous work test the gold content of the skarn material.

### **General Geology**

Published government geological data is sparse in the vicinity of the Wally #1 claim. To the north, Lower Jurassic Bonanza sub-group volcanic rocks overlie Mid to Upper Triassic Quatsino limestone. These rocks are in fault contact with Permian and older Sicker Group volcanics. A Jurassic or Lower Cretaceous granodiorite body cuts the Bonanza rocks approximately 2 km north of the claim.

Regional mapping by mining companies in the immediate vicinity show that the claim is underlain by Quatsino limestone and Bonanza Group rocks and is located slightly south of a small embayment in a dioritic intrusive, the main mass of which lies to the north and west of the property. Approximately 1.5 km to the east of the claim a narrow band of Quatsino limestone separates Bonanza Group rocks from underlying Middle to Upper Triassic Karmutsen basalts.

### Field Observations

The above rock types and accompanying skarn mineralization are exposed at widely scattered locations in creek gullies and in cut banks along various roads. The largest continuous bedrock exposure is at the location of a series of small pits developed by Nadira Mines in 1960. Here, a face approximately 10 metres long by 3 metres high shows massive ilvaite-garnet-epidote skarn in sharp contact with a north-striking feldspar porphyry dyke. Several strong fracture sets were noted - N80° W/35°SW and N65°W. The first may be along bedding planes(?). Chalcopyrite occurs as disseminations, small masses along fractures, and as veinlets. Appreciable malachite and minor azurite occur on fractures.

Several other outcrops exposing skarn in contact with porphyry dykes were seen along the roads. In all cases, the skarn is mineralized with disseminated chalcopyrite and the fractures coated with malachite and minor azurite. Gold content of mineralized skarn material based on four rock samples selected for geochemical assay is uniformly low (7 ppb to 85 ppb gold, Table 1). The four samples are of rusty chalcopyrite skarn and chloritic volcanic rock, each sample weighing approximately 0.5 kg. Except for sample R36, which returned 1461 ppm copper, copper and silver contents are also low.

### Conclusions

Although not thoroughly sampled, the gold content of skarn material explored in old workings and in outcrop along the north fork of Horse Creek are low.


### Statement of Expenditures

Expenses pertaining to prospecting work on the Wally #1 claims are as follows:

Salary	
P.E. Fox, 1.5 days at \$325/day	\$525.00
Accommodation and board	
2 days at \$40/day	80.00
Travel expenses	30.00
Vehicle Rental	40.00
Report Preparation and drafting	200.00
	<hr/>
Total expended	920.00

Work paid for by Orbex Minerals Limited

Prepared by

---

P.E. Fox, Ph.D., P.Eng. (B.C.)

TABLE I

ANALYSES FOR Cu, Ag, and Au

ACME ANALYTICAL LABORATORIES LTD.  
852 E. HASTINGS ST. VANCOUVER B.C. V6A 1R6  
PHONE 253-3158 DATA LINE 251-1011

DATE RECEIVED: DEC 4 1985

DATE REPORT MAILED:

*Dec. 10/85*

**GEOCHEMICAL ICP ANALYSIS**

.500 GRAM SAMPLE IS DIGESTED WITH JML 3-1-2 HCL-HNO3-H2O AT 95 DEG. C FOR ONE HOUR AND IS DILUTED TO 10 ML WITH WATER.  
THIS LEACH IS PARTIAL FOR MN.FE.CA.F.CR.MG.BA.TI.B.AL.NA.K.W.SI.ZR.CE.SN.Y.NB AND TA. AU DETECTION LIMIT BY ICP IS 3 PPM.  
- SAMPLE TYPE: ROCK CHIPS AU: ANALYSIS BY AA FROM 10 GRAM SAMPLE.

ASSAYER: *V. Saundry* DEAN TOYE OR TOM SAUNDY. CERTIFIED B.C. ASSAYER

FOX GEOLOGICAL CONSULTANTS LTD.

FILE # 85-3246

PAGE 1

SAMPLE#	Cu PPM	Ag PPM	Au* PPB
.....	-----	-----	-----
R-35	63	.7	70
R-36	1461	6.1	85
R-37	13	.1	5
R-38	21	.1	7
STD C/AU-0.5	58	7.0	500



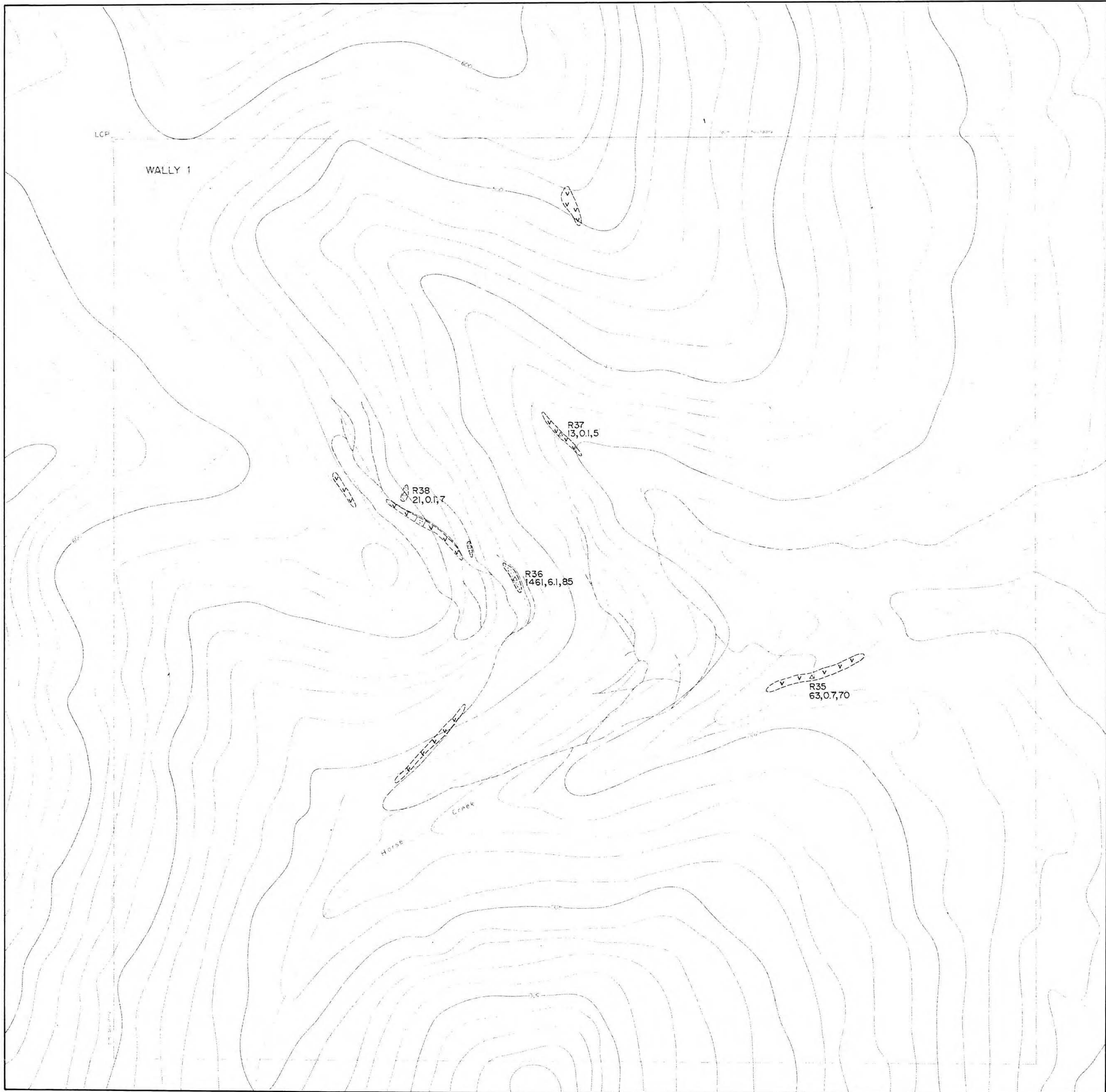
**CERTIFICATE**

I, Peter Edward Fox, certify to the following:


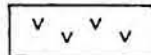
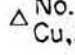

1. I am a consulting geologist residing at 890 Farnleigh Road, West Vancouver, British Columbia.
2. I am a Professional Engineer registered with the Association of Professional Engineers in British Columbia.
3. My academic qualifications are:  
B.Sc. and M.Sc., Queens University, Kingston, Ontario  
Ph.D., Carleton University, Ottawa, Ontario
4. I have been engaged in geological work for fifteen years since graduation.



Peter E. Fox, Ph.D., P.Eng.  
Vancouver, British Columbia  
July 5, 1986.

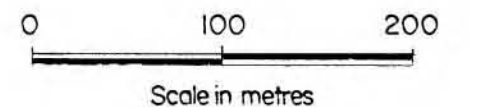


**LEGEND**

-  Calcisilicate skarn, variable amounts disseminated chalcopyrite
-  Bonanza Group volcanic rocks, greenstone
-  Rock sample showing sample number, copper in ppm, silver in ppm and gold in ppb
-  Outcrop

**GEOLOGICAL BRANCH  
ASSESSMENT REPORT**

# 15,015



To accompany: Prospecting Report on the Wally #1 Claim, by P.E. Fox P. Eng., 5 July, 1986.

Orbex Industries Inc.				
PROJECT No. 207		Wally #1 Claim		
PROSPECTING MAP				
Scale	Date	File	NTS	FIG.
1: 4000	5-7-86	207 by PF	92C15	3