

86-449-15025

Owner/Operator: COMINCO LTD.

EXPLORATION

WESTERN DISTRICT

Assessment Report  
Soil Grid Geochemistry  
on the  
Sha Claims 9, 10, 12, 13  
Fort Steele M.D.  
British Columbia

N.T.S. 82F/1W

Latitude : 49°~~09~~ 05'

Longitude : 116°~~41~~ 18.5'

Period of Field Work : June 16-27, 1986

**GEOLOGICAL BRANCH  
ASSESSMENT REPORT**

**15,025**

August 1986

D.L. Pighin

**FILMED**

## TABLE OF CONTENTS

	<u>Page</u>
1.00 Introduction	
1.10 Location and Access	1
1.20 Property Definition	1
1.30 Topography and Vegetation	1
1.40 Objective	1
2.00 Geochemistry	
2.10 Sampling Procedure	1
2.20 Analytical Procedure	2
3.00 Conclusions	2
4.00 Geochemical Results	4
Statement of Expenditures	5
Affidavit	6
Statement of Qualifications	7
Plates 1 - Location Map	Attached
2 - Zn Soil Sample Grid	Attached
3 - Pb Soil Sample Grid	Attached

COMINCO LTD.

EXPLORATION

WESTERN DISTRICT

Report on Soil Grid Geochemistry

Sha Claims 9, 10, 12 and 13

Fort Steele, M.D.

1.00 INTRODUCTION

1.10 Location and Access

The Sha property lies within The Fort Steele and Nelson Mining Divisions. The claims are located 40 km east of Creston, B.C., at latitude 49°06'N and longitude 116°17'W.

Access to the property is gained via Highway 3 and thence by various old logging roads.

1.20 Property Definition

The property consists of Sha claims 1-28, totalling 450 units. All the claims are 100% owned by Cominco Ltd.

1.30 Topography and Vegetation

The Sha property covers a large tract of densely forested, mountainous terrain. The mountains are steep sided with rounded to flat ridge tops. The major valleys have been glaciated, however, there is no evidence of Alpine glaciation.

Vegetation consists mainly of lodgepole pine, douglas fir and larch on south and east facing slopes. North and north-west slopes host thick stands of mature spruce, cedar, hemlock, minor grand fir and white pine.

1.40 Objective

Grid soil geochemistry was undertaken to help evaluate an area thought to be underlain by favourable geology.

2.00 GEOCHEMISTRY

2.10 Sampling Procedure - 484 samples

Soil samples were taken at 100 m intervals on NE-SW lines 200 m apart. Samples were taken from the B horizon at depths of 10-20 cm.

## 2.20 Analytical Procedure

All samples were shipped to Cominco's ERL laboratories in Vancouver.

One half gram of -80 mesh soil is weighed into a test tube, 5 ml of 20% HNO<sub>3</sub> is added. The samples are digested for 90 min in a water bath at 95°C (samples are shaken every 15 min). After digestion the sample is made up to 10 ml with deionized water shaken and run on the A.A. for Pb, Zn. Background correction is used for Pb determinations.

The readout sheets for all elements are included with the report.

## 3.00 CONCLUSIONS

The soil survey located eight widely scattered single pt. Pb anomalies and no Zn anomalies. These results are not considered significant and no further work is recommended.

Report by: David L. Pighin  
D.L. PIGHIN  
Geologist III

Endorsed by: D. Anderson  
D. ANDERSON, P.Eng.  
Project Geologist

Approved by: John Hamilton  
J.M. HAMILTON  
Manager  
Exploration

xc: Mining Recorder (2 copies)  
Western District, Exploration  
Kootenay Exploration

" GEOCHEMICAL RESULTS "

SHA-WD

## Sha Centre Grid

SOUTH SHA GRID

JOB V B6-02173  
REPORT DATE 8 JUL 1986

EXP LAB NUMBER	FIELD NO	MAP ZONE	North East		MAT'L DRIG	SITE	COLOUR	SIZE	DRG	DEPTH WET CM	WIDTH SLOPE	FLOW HORIZ	PPT	PH	Pb PPM	Zn PPM
			North	East												
88601506	19683		+0	+0	1 SOIL RESID	BRN-MED	SILT	LOW	DRY	20	MED	B	.	.	7	34
88601507	19684		+0	-100	1 SOIL RESID	BRN-MED	SILT	LOW	M'ST	20	MED	B	.	.	9	78
88601508	19685		+0	-200	1 SOIL RESID	BRN-MED	SILT	LOW	M'ST	20	MED	B	.	.	9	100
88601509	19686		+0	-300	1 SOIL RESID	BRN-MED	SILT	LOW	M'ST	30	MED	B	.	.	14	60
88601510	19687		+0	-400	1 SOIL RESID	BRN-MED	SILT	LOW	M'ST	20	MED	B	.	.	13	101
88601511	19688		+0	-500	1 SOIL RESID	BRN-MED	SILT	LOW	DRY	10	LOW	B	.	.	47	65
88601512	19689		+0	-600	1 SOIL COLLU	BRN-MED	SILT	LOW	M'ST	25	STEEP	B	.	.	53	105
88601513	19690		+0	-700	1 SOIL COLLU	BRN-MED	SILT	LOW	M'ST	25	STEEP	B	.	.	43	108
88601514	19691		+0	-800	1 SOIL RESID	BRN-MED	SILT	LOW	M'ST	25	STEEP	B	.	.	20	65
88601515	19692		+0	-900	1 SOIL RESID	BRN-MED	SILT	LOW	M'ST	15	LOW	B	.	.	24	44
88601516	19693		+0	-1000	1 SOIL COLLU	BRN-MED	SILT	LOW	DRY	20	STEEP	B	.	.	18	60
88601517	19682		+0	+100	1 SOIL RESID	BRN-MED	SILT	LOW	M'ST	30	MED	B	.	.	10	102
88601518	19681		+0	+200	1 SOIL RESID	BRN-MED	SILT	LOW	M'ST	20	MED	B	.	.	21	70
88601519	19680		+0	+300	1 SOIL RESID	BRN-MED	SILT	LOW	M'ST	25	MED	B	.	.	9	89
88601520	19679		+0	+400	1 SOIL RESID	BRN-MED	SILT	LOW	M'ST	30	LOW	B	.	.	9	81
88601521	19678		+0	+500	1 SOIL RESID	BRN-MED	SILT	LOW	M'ST	25	MED	B	.	.	10	97
88601522	19677		+0	+600	1 SOIL RESID	BRN-MED	SILT	LOW	M'ST	30	MED	B	.	.	12	78
88601523	19676		+0	+700	1 SOIL RESID	BRN-MED	SILT	LOW	M'ST	30	MED	B	.	.	10	61
88601524	19675		+0	+800	1 SOIL RESID	BRN-MED	SILT	LOW	M'ST	25	MED	B	.	.	15	98
88601525	19674		+0	+900	1 SOIL RESID	BRN-MED	SILT	LOW	M'ST	25	MED	B	.	.	16	103
88601526	19673		+0	+1000	1 SOIL RESID	BRN-MED	SILT	LOW	M'ST	20	MED	B	.	.	19	98
88601527	19703		+1	-100	1 SOIL RESID	BRN-MED	SILT	LOW	M'ST	25	LOW	B	.	.	13	58
88601528	19702		+1	-200	1 SOIL RESID	BRN-DARK	SILT	LOW	M'ST	40	MED	B	.	.	14	61
88601529	19701		+1	-300	1 SOIL TALUS	BRN-MED	SILT	LOW	M'ST	15	STEEP	B	.	.	13	89
88601530	19700		+1	-400	1 SOIL COLLU	BRN-MED	SILT	LOW	M'ST	25	MED	B	.	.	11	91
88601531	19699		+1	-500	1 SOIL RESID	BRN-MED	SILT	LOW	M'ST	30	FLAT	B	.	.	7	10
88601532	19698		+1	-600	1 SOIL TALUS	BRN-MED	SILT	LOW	DRY	15	STEEP	B	.	.	23	52
88601533	19697		+1	-700	1 SOIL TALUS	BRN-LIGHT	SILT	LOW	DRY	10	STEEP	B	.	.	29	48
88601534	19696		+1	-800	1 SOIL RESID	BRN-MED	SILT	LOW	M'ST	25	LOW	B	.	.	24	44
88601535	19695		+1	-900	1 SOIL RESID	BRN-MED	SILT	LOW	M'ST	25	LOW	B	.	.	16	51
88601536	19694		+1	-1000	1 SOIL TALUS	BRN-MED	SILT	MED	DRY	10	STEEP	B	.	.	42	101
88601537	19662		+1	+0	1 SOIL RESID	BRN-MED	SILT	LOW	M'ST	30	MED	B	.	.	8	47
88601538	19663		+1	+100	1 SOIL RESID	BRN-MED	SILT	LOW	M'ST	25	MED	B	.	.	24	74

EXP LAB NUMBER	FIELD		North	East	#	MAT'L	DRG	SITE	COLOUR	SIZE	DRG	DEPTH WIDTH FLOW			PPT	pH	Pb PPM	Zn PPM
	NO	MAP ZONE										WET CM	SLOPE	HORIZ				
88601539	19664		+1	+200	1	SOIL	RESID	BRN-MED		SILT	LOW	M'ST 20	LOW	B	.	9	76	
88601540	19665		+1	+300	1	SOIL	RESID	BRN-MED		SILT	LOW	M'ST 20	LOW	B	.	6	78	
88601541	19666		+1	+400	1	SOIL	RESID	BRN-MED		SILT	LOW	M'ST 30	MED	B	.	10	96	
88601542	19667		+1	+500	1	SOIL	RESID	BRN-MED		SILT	LOW	M'ST 25	LOW	B	.	9	65	
88601543	19668		+1	+600	1	SOIL	RESID	BRN-MED		SILT	LOW	M'ST 20	LOW	B	.	8	32	
88601544	19669		+1	+700	1	SOIL	RESID	BRN-MED		SILT	LOW	M'ST 30	MED	B	.	8	61	
88601545	19670		+1	+800	1	SOIL	RESID	BRN-MED		SILT	LOW	M'ST 25	MED	B	.	12	56	
88601546	19671		+1	+900	1	SOIL	RESID	BRN-MED		SILT	LOW	M'ST 25	STEEP	B	.	14	44	
88601547	19672		+1	+1000	1	SOIL	RESID	BRN-MED		SILT	LOW	M'ST 30	STEEP	B	.	14	65	
88601548	19568		+2	+0	2	SOIL	RESID	BRN-MED		SILT	LOW	M'ST 10	FLAT	B	.	10	60	
88601549	19567		+2	-100	2	SOIL	RESID	BRN-MED		SILT	LOW	M'ST 15	FLAT	B	.	10	64	
88601550	19566		+2	-200	2	SOIL	RESID	BRN-MED		SILT	LOW	M'ST 30	FLAT	B	.	9	64	
88601551	19565		+2	-300	2	SOIL	RESID	BRN-MED		SILT	LOW	M'ST 15	FLAT	B	.	17	87	
88601552	19564		+2	-400	2	SOIL	RESID	BRN-MED		SILT	LOW	M'ST 15	MED	B	.	17	82	
88601553	19563		+2	-500	2	SOIL	RESID	BRN-MED		SILT	LOW	M'ST 30	MED	B	.	5	73	
88601554	19562		+2	-600	2	SOIL	RESID	BRN-MED		SILT	LOW	M'ST 20	FLAT	B	.	12	48	
88601555	19561		+2	-700	2	SOIL	COLLU	BRN-MED		SILT	LOW	M'ST 20	LOW	B	.	134	76	
88601556	19560		+2	-800	2	SOIL	TALUS	BRN-MED		SILT	LOW	M'ST 20	MED	B	.	17	75	
88601557	19559		+2	-900	2	SOIL	RESID	BRN-MED		SILT	LOW	M'ST 15	FLAT	B	.	34	60	
88601558	19558		+2	-1000	2	SOIL	RESID	BRN-MED		SILT	LOW	M'ST 10	LOW	B	.	21	47	
88601559	19732		+2	+100	2	SOIL	COLLU	BRN-MED		SILT	LOW	M'ST 15	MED	B	.	13	53	
88601560	19731		+2	+200	2	SOIL	COLLU	BRN-MED		SILT	LOW	M'ST 15	MED	B	.	13	41	
88601561	19730		+2	+300	2	SOIL	TALUS	BRN-MED		SILT	MED	M'ST 20	MED	B	.	23	60	
88601562	19729		+2	+400	2	SOIL	COLLU	BRN-MED		SILT	LOW	M'ST 15	MED	B	.	12	75	
88601563	19728		+2	+500	2	SOIL	RESID	BRN-MED		SILT	LOW	M'ST 15	MED	B	.	9	53	
88601564	19727		+2	+600	2	SOIL	TALUS	BRN-MED		SILT	LOW	M'ST 20	MED	B	.	14	90	
88601565	19726		+2	+700	2	SOIL	COLLU	BRN-MED		SILT	LOW	M'ST 15	MED	B	.	15	56	
88601566	19725		+2	+800	2	SOIL	COLLU	BRN-MED		SILT	LOW	M'ST 15	MED	B	.	9	38	
88601567	19724		+2	+886	2	SILT		ACTIVE	BRN-MED	SAND	LOW	15	3.3M	M	.	18	60	
88601568	19723		+2	+900	2	SOIL	COLLU	BRN-BARK		SILT	LOW	M'ST 20	MED	B	.	14	67	
88601569	19722		+2	+1000	2	SOIL	COLLU	BRN-BARK		SILT	MED	M'ST 20	MED	B	.	18	63	
88601570	19547		+3	+0	2	SOIL	RESID	BRN-MED		SILT	LOW	M'ST 10	LOW	B	.	17	46	
88601571	19548		+3	-100	2	SOIL	RESID	BRN-MED		SILT	LOW	M'ST 20	LOW	B	.	15	44	
88601572	19549		+3	-200	2	SOIL	RESID	BRN-MED		SILT	LOW	M'ST 25	LOW	B	.	13	52	
88601573	19550		+3	-300	2	SOIL	RESID	BRN-MED		SILT	LOW	M'ST 15	LOW	B	.	19	61	
88601574	19551		+3	-400	2	SOIL	RESID	BRN-MED		SILT	LOW	M'ST 30	LOW	B	.	6	73	



EXP LAB	FIELD									DEPTH	WIDTH	FLOW		Pb	Zn					
NUMBER	NO	MAP	ZONE	North	East	#	MAT'L	ORIG	SITE	CLOUR	SIZE	DRG	WET	CM	SLOPE	HORIZ	PPT	PH	PPM	PPM
88601575	19552			+3	-500	2	SOIL	RESID		BRN-MED	SILT	LOW	M <sup>ST</sup>	15	MED	B	.	.	12	58
88601576	19553			+3	-600	2	SOIL	RESID		BRN-MED	SILT	LOW	M <sup>ST</sup>	15	MED	B	.	.	12	40
88601577	19554			+3	-700	2	SOIL	TALUS		BRN-MED	SILT	LOW	M <sup>ST</sup>	20	MED	B	.	.	15	51
88601578	19555			+3	-800	2	SOIL	TALUS		BRN-MED	SILT	LOW	M <sup>ST</sup>	15	MED	B	.	.	13	51
88601579	19556			+3	-900	2	SOIL	RESID		BRN-MED	SILT	LOW	M <sup>ST</sup>	20	LOW	B	.	.	19	34
88601580	19557			+3	-1000	2	SOIL	RESID		BRN-MED	SILT	LOW	M <sup>ST</sup>	15	FLAT	B	.	.	14	40
88601581	19711			+3	+100	2	SOIL	COLLU		BRN-MED	SILT	LOW	M <sup>ST</sup>	10	MED	B	.	.	7	75
88601582	19712			+3	+200	2	SOIL	COLLU		BRN-MED	SILT	LOW	M <sup>ST</sup>	15	MED	B	.	.	22	73
88601583	19713			+3	+300	2	SOIL	COLLU		BRN-MED	SILT	LOW	M <sup>ST</sup>	15	MED	B	.	.	42	74
88601584	19714			+3	+400	2	SOIL	COLLU		BRN-MED	SILT	LOW	M <sup>ST</sup>	35	MED	B	.	.	33	107
88601585	19715			+3	+500	2	SOIL	RESID		BRN-LIGHT	SILT	LOW	M <sup>ST</sup>	40	MED	B	.	.	10	37
88601586	19716			+3	+600	2	SOIL	COLLU		BRN-MED	SILT	MED	M <sup>ST</sup>	20	MED	B	.	.	15	31
88601587	19717			+3	+626	2	SILT		ACTIVE	BRN-MED	GRAVLY-SAND	LOW		20	2.3M	M	.	.	18	55
88601588	19718			+3	+700	2	SOIL	TALUS		BRN-MED	SILT	MED	M <sup>ST</sup>	25	MED	B	.	.	17	60
88601589	19719			+3	+800	2	SOIL	TALUS		BRN-MED	SILT	LOW	M <sup>ST</sup>	15	MED	B	.	.	18	68
88601590	19720			+3	+900	2	SOIL	RESID		BRN-DARK	SILT	HIGH	M <sup>ST</sup>	20	MED	B	.	.	18	47
88601591	19721			+3	+1000	2	SOIL	COLLU		BRN-DARK	SILT	MED	M <sup>ST</sup>	20	MED	B	.	.	15	91
88601592	19525			+4	+0	1	SOIL	RESID		BRN-MED	SILT	LOW	M <sup>ST</sup>	30	MED	B	.	.	19	110
88601593	19524			+4	-100	1	SOIL	RESID		BRN-MED	SILT	LOW	M <sup>ST</sup>	25	MED	B	.	.	24	51
88601594	19523			+4	-200	1	SOIL	RESID		BRN-MED	SILT	LOW	M <sup>ST</sup>	20	MED	B	.	.	18	55
88601595	19522			+4	-300	1	SOIL	COLLU		BRN-MED	SILT	LOW	M <sup>ST</sup>	20	MED	B	.	.	18	45
88601596	19521			+4	-400	1	SOIL	RESID		BRN-MED	SILT	LOW	M <sup>ST</sup>	20	LOW	B	.	.	18	41
88601597	19520			+4	-500	1	SOIL	RESID		BRN-MED	SILT	LOW	M <sup>ST</sup>	30	MED	B	.	.	34	45
88601598	19519			+4	-600	1	SOIL	RESID		BRN-MED	SILT	LOW	M <sup>ST</sup>	25	MED	B	.	.	23	50
88601599	19518			+4	-700	1	SOIL	COLLU		BRN-LIGHT	SILT	LOW	M <sup>ST</sup>	25	MED	B	.	.	14	40
88601600	19517			+4	-800	1	SOIL	COLLU		BRN-MED	SILT	LOW	M <sup>ST</sup>	20	MED	B	.	.	31	52
88601601	19516			+4	-900	1	SOIL	TALUS		BRN-MED	SILT	LOW	M <sup>ST</sup>	20	MED	B	.	.	13	30
88601602	19515			+4	-1000	1	SOIL	RESID		BRN-MED	SILT	LOW	M <sup>ST</sup>	25	LOW	B	.	.	8	40
88601603	19526			+4	+100	1	SOIL	COLLU		BRN-MED	SILT	LOW	M <sup>ST</sup>	25	STEEP	B	.	.	16	39
88601604	19527			+4	+190	1	SILT		ACTIVE	BRN-MED	GRAVLY-SILT	LOW	WET	10	2.3M	M	.	.	18	56
88601605	19528			+4	+200	1	SOIL	RESID		BRN-DARK	SILT	LOW	M <sup>ST</sup>	30	LOW	B	.	.	25	75
88601606	19529			+4	+300	1	SOIL	COLLU		BRN-MED	SILT	LOW	M <sup>ST</sup>	25	STEEP	B	.	.	27	65
88601607	19530			+4	+400	1	SOIL	TALUS		BRN-MED	SILT	LOW	M <sup>ST</sup>	25	MED	B	.	.	18	76
88601608	19531			+4	+500	1	SOIL	RESID		BRN-MED	SILT	LOW	M <sup>ST</sup>	30	MED	B	.	.	18	74
88601609	19532			+4	+600	1	SOIL	RESID		BRN-MED	SILT	LOW	M <sup>ST</sup>	20	MED	B	.	.	20	59
88601610	19533			+4	+700	1	SOIL	RESID		BRN-MED	SILT	LOW	M <sup>ST</sup>	30	MED	B	.	.	11	26

EXP LAB NUMBER	FIELD NO	MAP ZONE	North	East	#	MAT'L ORIG	SITE	COLOR	SIZE	ORG	DEPTH WET	WIDTH CM	FLOW SLOPE	HORIZ	PPT	PH	Pb PPM	Zn PPM
S8601611	19534		+4	+800	1	SOIL RESID		BRN-MED	SILT	LOW	M'ST 30	MED	B				18	78
S8601612	19535		+4	+900	1	SOIL RESID		BRN-MED	SILT	LOW	M'ST 20	MED	B				13	34
S8601613	19536		+4	+1000	1	SOIL RESID		BRN-MED	SILT	LOW	M'ST 30	MED	B				14	80
S8601614	19503		+5	+0	1	SOIL COLLU		BRN-MED	SILT	LOW	M'ST 25	MED	B				21	132
S8601615	19504		+5	-100	1	SOIL RESID		BRN-MED	SILT	LOW	M'ST 30	LOW	B				20	36
S8601616	19505		+5	-130	1	SILT	ACTIVE	BRN-DARK	SILT	LOW	WET 10	2.3M	H				21	57
S8601617	19506		+5	-200	1	SOIL RESID		BRN-MED	SILT	LOW	M'ST 25	MED	B				26	41
S8601618	19507		+5	-300	1	SOIL RESID		BRN-MED	SILT	LOW	M'ST 20	MED	B				22	61
S8601619	19508		+5	-400	1	SOIL RESID		BRN-MED	SILT	LOW	M'ST 30	MED	B				28	77
S8601620	19509		+5	-500	1	SOIL RESID		BRN-MED	SILT	LOW	M'ST 30	MED	B				17	62
S8601621	19510		+5	-600	1	SOIL COLLU		BRN-MED	SILT	LOW	M'ST 20	MED	B				21	33
S8601622	19511		+5	-700	1	SOIL RESID		BRN-MED	SILT	LOW	M'ST 25	MED	B				16	44
S8601623	19512		+5	-800	1	SOIL RESID		BRN-MED	SILT	LOW	M'ST 30	MED	B				18	38
S8601624	19513		+5	-900	1	SOIL RESID		BRN-MED	SILT	LOW	M'ST 30	STEEP	B				17	38
S8601625	19514		+5	-1000	1	SOIL RESID		BRN-MED	SILT	LOW	M'ST 20	MED	B				24	41
S8601626	19546		+5	+100	1	SOIL RESID		BRN-MED	SILT	LOW	M'ST 20	MED	B				24	79
S8601627	19545		+5	+200	1	SOIL RESID		BRN-MED	SILT	LOW	M'ST 25	MED	B				26	55
S8601628	19544		+5	+300	1	SOIL RESID		BRN-MED	SILT	LOW	M'ST 30	MED	B				17	54
S8601629	19543		+5	+400	1	SOIL RESID		BRN-MED	SILT	LOW	M'ST 25	MED	B				25	94
S8601630	19542		+5	+500	1	SOIL RESID		BRN-MED	SILT	LOW	M'ST 25	MED	B				18	71
S8601631	19541		+5	+600	1	SOIL RESID		BRN-MED	SILT	LOW	M'ST 20	MED	B				11	51
S8601632	19540		+5	+700	1	SOIL RESID		BRN-MED	SILT	LOW	M'ST 30	MED	B				24	60
S8601633	19539		+5	+800	1	SOIL RESID		BRN-MED	SILT	LOW	M'ST 30	MED	B				15	95
S8601634	19538		+5	+900	1	SOIL RESID		BRN-MED	SILT	LOW	M'ST 25	MED	B				20	86
S8601635	19537		+5	+1000	1	SOIL RESID		BRN-MED	SILT	LOW	M'ST 20	MED	B				23	127
S8601636	19733		+6	+0	2	SOIL RESID		BRN-DARK	SILT	MED	M'ST 15	MED	B				39	79
S8601637	19734		+6	-100	2	SOIL COLLU		BRN-MED	SILT	LOW	M'ST 20	MED	B				21	50
S8601638	19735		+6	-200	2	SOIL COLLU		BRN-MED	SILT	LOW	M'ST 25	MED	B				27	108
S8601639	19736		+6	-300	2	SOIL COLLU		BRN-DARK	SILT	HIGH	M'ST 30	MED	B				18	57
S8601640	19737		+6	-321	2	SILT	ACTIVE	BRN-DARK	SILT	HIGH	WET 05	1.3M	S				24	34
S8601641	19738		+6	-400	2	SOIL TALUS		BRN-MED	SILT	MED	M'ST 25	MED	B				44	90
S8601642	19739		+6	-500	2	SOIL COLLU		BRN-MED	SILT	LOW	M'ST 10	MED	B				27	33
S8601643	19740		+6	-519	2	SILT	ACTIVE	BRN-MED	GRAVLY-SAND	MED	WET 10	3.3M	H				31	60
S8601644	19741		+6	-600	2	SOIL COLLU		BRN-DARK	SILT	MED	M'ST 20	MED	B				37	61
S8601645	19742		+6	-675	2	SILT	ACTIVE	BRN-MED	SANDY-SILT	MED	WET 15	2.2M	S				39	76
S8601646	19743		+6	-700	2	SOIL RESID		BRN-MED	SILT	LOW	M'ST 20	MED	B				14	56

EXP LAB	FIELD									DEPTH	WIDTH	FLOW			P <sub>b</sub>	Z <sub>N</sub>			
NUMBER	NO	MAP ZONE	North	East	#	MAT'L	DRTG	SITE	COLOUR	SIZE	ORG	WET	CM	SLOPE	HORIZ	PPT	PH	PPM	PPM
S8601647	19744		+6	-800	2	SOIL	RESID		BRN-DARK	SILT	MED	M'ST	20	MED	B	.	.	35	69
S8601648	19745		+6	-900	2	SOIL	RESID		BRN-DARK	SILT	MED	M'ST	25	MED	B	.	.	15	68
S8601649	19746		+6	-1000	2	SOIL	RESID		BRN-MED	SILT	LOW	M'ST	20	MED	B	.	.	14	55
S8601650	19747		+6	+100	2	SOIL	TALUS		BRN-DARK	SILT	MED	M'ST	15	MED	B	.	.	35	71
S8601651	19748		+6	+200	2	SOIL	COLLU		BRN-MED	SILT	LOW	M'ST	15	LOW	B	.	.	19	92
S8601652	19749		+6	+300	2	SOIL	RESID		BRN-DARK	SILT	LOW	M'ST	15	MED	B	.	.	40	67
S8601653	19750		+6	+400	2	SOIL	COLLU		BRN-MED	SILT	LOW	M'ST	15	MED	B	.	.	19	87
S8601654	19751		+6	+500	2	SOIL	COLLU		BRN-MED	SILT	LOW	M'ST	20	MED	B	.	.	15	74
S8601655	19752		+6	+600	2	SOIL	TALUS		BRN-DARK	SILT	MED	M'ST	20	MED	B	.	.	30	60
S8601656	19753		+6	+700	2	SOIL	TALUS		BRN-MED	SILT	LOW	M'ST	25	MED	B	.	.	33	100
S8601657	19754		+6	+800	2	SOIL	TALUS		BRN-MED	SILT	LOW	M'ST	25	MED	B	.	.	22	113
S8601658	19755		+6	+900	2	SOIL	TALUS		BRN-MED	SILT	LOW	M'ST	20	MED	B	.	.	14	79
S8601659	19756		+6	+1000	2	SOIL	TALUS		BRN-LIGHT	SILT	LOW	M'ST	20	MED	B	.	.	15	82
S8601660	19620		+7	+0	1	SOIL	RESID		BRN-MED	SILT	LOW	M'ST	30	MED	B	.	.	27	83
S8601661	19621		+7	-100	1	SOIL	RESID		BRN-MED	SILT	LOW	M'ST	25	MED	B	.	.	39	93
S8601662	19622		+7	-200	1	SOIL	RESID		BRN-MED	SILT	LOW	M'ST	20	MED	B	.	.	29	64
S8601663	19623		+7	-300	1	SOIL	RESID		BRN-MED	SILT	LOW	M'ST	25	MED	B	.	.	21	71
S8601664	19624		+7	-400	1	SOIL	TALUS		BRN-MED	SILT	LOW	M'ST	20	MED	B	.	.	15	80
S8601665	19625		+7	-500	1	SOIL	RESID		BRN-MED	SILT	LOW	M'ST	30	MED	B	.	.	26	74
S8601666	19626		+7	-600	1	SOIL	TALUS		BRN-MED	SILT	LOW	M'ST	20	MED	B	.	.	22	73
S8601667	19627		+7	-700	1	SOIL	RESID		BRN-DARK	SILT	LOW	M'ST	25	MED	B	.	.	37	75
S8601668	19628		+7	-800	1	SOIL	RESID		BRN-DARK	SILT	LOW	M'ST	30	MED	B	.	.	43	82
S8601669	19629		+7	-900	1	SOIL	RESID		BRN-DARK	SILT	LOW	M'ST	30	MED	B	.	.	41	86
S8601670	19630		+7	-1000	1	SOIL	RESID		BRN-DARK	SILT	LOW	M'ST	30	MED	B	.	.	46	85
S8601671	19661		+7	+100	1	SOIL	RESID		BRN-MED	SILT	LOW	M'ST	20	MED	B	.	.	43	89
S8601672	19660		+7	+200	1	SOIL	RESID		BRN-MED	SILT	LOW	M'ST	30	MED	B	.	.	22	79
S8601673	19659		+7	+300	1	SOIL	RESID		BRN-MED	SILT	LOW	M'ST	20	MED	B	.	.	38	43
S8601674	19658		+7	+400	1	SOIL	RESID		BRN-MED	SILT	LOW	M'ST	20	MED	B	.	.	26	62
S8601675	19657		+7	+500	1	SOIL	RESID		BRN-MED	SILT	LOW	M'ST	30	MED	B	.	.	22	83
S8601676	19656		+7	+600	1	SOIL	RESID		BRN-MED	SILT	LOW	M'ST	25	MED	B	.	.	29	42
S8601677	19655		+7	+700	1	SOIL	RESID		BRN-MED	SILT	LOW	M'ST	30	MED	B	.	.	20	65
S8601678	19654		+7	+800	1	SOIL	COLLU		BRN-DARK	SILT	LOW	M'ST	25	MED	B	.	.	19	107
S8601679	19653		+7	+900	1	SOIL	RESID		BRN-MED	SILT	LOW	M'ST	20	LOW	B	.	.	14	36
S8601680	19652		+7	+1000	1	SOIL	RESID		BRN-MED	SILT	LOW	M'ST	25	LOW	B	.	.	14	74
S8601681	19641		+8	+0	1	SOIL	RESID		BRN-MED	SILT	LOW	M'ST	30	MED	B	.	.	17	51
S8601682	19640		+8	-100	1	SOIL	RESID		BRN-MED	SILT	LOW	M'ST	30	MED	B	.	.	16	102

EXP LAB NUMBER	FIELD NO	MAP ZONE	North	East	#	MAT'L ORIG	SITE	COLOUR	SIZE	ORG	DEPTH WIDTH FLOW			Pb PPM	Zn PPM
											WET CM	SLOPE	HORIZ		
S8601683	19639		+8	-200	1	SOIL RESID	BRN-MED	SILT	LOW	M'ST 25	MED	B	.	19	67
S8601684	19638		+8	-300	1	SOIL RESID	BRN-MED	SILT	LOW	M'ST 30	MED	B	.	19	43
S8601685	19637		+8	-400	1	SOIL RESID	BRN-MED	SILT	LOW	M'ST 25	MED	B	.	15	57
S8601686	19636		+8	-500	1	SOIL RESID	BRN-MED	SILT	LOW	M'ST 25	MED	B	.	17	76
S8601687	19635		+8	-600	1	SOIL COLLU	BRN-MED	SILT	LOW	M'ST 20	MED	B	.	19	72
S8601688	19634		+8	-700	1	SOIL TALUS	BRN-MED	SILT	MED	DRY 15	MED	B	.	19	59
S8601689	19633		+8	-800	1	SOIL RESID	BRN-MED	SILT	LOW	M'ST 40	MED	B	.	31	71
S8601690	19632		+8	-900	1	SOIL RESID	BRN-MED	SILT	LOW	M'ST 30	MED	B	.	22	48
S8601691	19631		+8	-1000	1	SOIL RESID	BRN-MED	SILT	LOW	M'ST 35	MED	B	.	26	56
S8601692	19642		+8	+100	1	SOIL COLLU	BRN-MED	SILT	LOW	M'ST 20	MED	B	.	29	67
S8601693	19643		+8	+200	1	SOIL RESID	BRN-MED	SILT	LOW	M'ST 30	MED	B	.	35	69
S8601694	19644		+8	+300	1	SOIL RESID	BRN-MED	SILT	LOW	M'ST 25	MED	B	.	33	65
S8601695	19645		+8	+400	1	SOIL RESID	BRN-MED	SILT	LOW	M'ST 30	MED	B	.	17	85
S8601696	19646		+8	+500	1	SOIL RESID	BRN-MED	SILT	LOW	M'ST 30	LOW	B	.	20	52
S8601697	19647		+8	+600	1	SOIL RESID	BRN-MED	SILT	LOW	M'ST 30	LOW	B	.	21	65
S8601698	19648		+8	+700	1	SOIL RESID	BRN-MED	SILT	LOW	M'ST 20	LOW	B	.	20	65
S8601699	19649		+8	+800	1	SOIL RESID	BRN-MED	SILT	LOW	M'ST 25	LOW	B	.	32	115
S8601700	19650		+8	+900	1	SOIL RESID	BRN-MED	SILT	LOW	M'ST 30	FLAT	B	.	14	49
S8601701	19651		+8	+1000	1	SOIL RESID	BRN-MED	SILT	LOW	M'ST 30	FLAT	B	.	11	42
S8601702	19611		+9	-100	2	SOIL TALUS	BRN-MED	SILT	LOW	M'ST 25	MED	B	.	22	44
S8601703	19610		+9	-200	2	SOIL TALUS	BRN-MED	SILT	LOW	M'ST 10	MED	B	.	22	49
S8601704	19609		+9	-300	2	SOIL TALUS	BRN-MED	SILT	LOW	M'ST 15	MED	B	.	20	53
S8601705	19608		+9	-400	2	SOIL TALUS	BRN-MED	SILT	MED	M'ST 10	MED	B	.	27	59
S8601706	19607		+9	-500	2	SOIL TALUS	BRN-LIGHT	SILT	MED	M'ST 10	MED	B	.	23	56
S8601707	19606		+9	-600	2	SOIL TALUS	BRN-MED	SILT	LOW	M'ST 15	MED	B	.	17	69
S8601708	19605		+9	-700	2	SOIL COLLU	BRN-MED	SILT	LOW	M'ST 15	MED	B	.	19	81
S8601709	19604		+9	-800	2	SOIL TALUS	BRN-DARK	SILT	HIGH	M'ST 15	MED	B	.	15	73
S8601710	19603		+9	-900	2	SOIL TALUS	BRN-DARK	SILT	HIGH	M'ST 05	MED	B	.	58	102
S8601711	19602		+9	-1000	2	SOIL TALUS	BRN-MED	SILT	MED	M'ST 05	MED	B	.	14	42
S8601712	19569		+9	+0	2	SOIL COLLU	BRN-MED	SILT	LOW	M'ST 10	MED	B	.	21	58
S8601713	19570		+9	+100	2	SOIL COLLU	BRN-MED	SILT	LOW	M'ST 20	LOW	B	.	13	38
S8601714	19571		+9	+200	2	SOIL COLLU	BRN-MED	SILT	LOW	DRY 20	MED	B	.	18	44
S8601715	19572		+9	+300	2	SOIL RESID	BRN-MED	SILT	LOW	M'ST 20	FLAT	B	.	10	29
S8601716	19573		+9	+400	2	SOIL COLLU	BRN-MED	SILT	LOW	M'ST 25	LOW	B	.	32	63
S8601717	19574		+9	+500	2	SOIL TALUS	BRN-MED	SILT	LOW	M'ST 20	LOW	B	.	26	67
S8601718	19575		+9	+600	2	SOIL COLLU	BRN-MED	SILT	LOW	M'ST 15	MED	B	.	9	61

EXP LAB NUMBER	FIELD NO	MAP ZONE	North	East	#	MAT'L ORIG	SITE	COLOUR	SIZE	ORG	DEPTH WIDTH FLOW			Pb PPM	Zn PPM
											WET CM	SLOPE	HORIZ		
SB601719	19576		+9	+700	2	SOIL TALUS	BRN-MED	SILT	LOW	M'ST 20	MED	D	.	19	60
SB601720	19577		+9	+800	2	SOIL COLLU	BRN-MED	SILT	LOW	M'ST 20	MED	B	.	27	51
SB601721	19578		+9	+900	2	SOIL COLLU	BRN-MED	SILT	LOW	M'ST 10	LOW	B	.	16	67
SB601722	19579		+9	+1000	2	SOIL COLLU	BRN-MED	SILT	LOW	M'ST 25	LOW	B	.	13	25
SB601723	19591		+10	+0	2	SOIL TALUS	BRN-MED	SILT	LOW	M'ST 15	LOW	B	.	19	47
SB601724	19592		+10	-100	2	SOIL TALUS	BRN-LIGHT	SILT	LOW	M'ST 15	MED	B	.	53	58
SB601725	19593		+10	-200	2	SOIL TALUS	BRN-MED	SILT	LOW	M'ST 10	MED	B	.	23	71
SB601726	19594		+10	-300	2	SOIL TALUS	BRN-MED	SILT	MED	M'ST 20	MED	B	.	28	68
SB601727	19595		+10	-400	2	SOIL TALUS	BRN-MED	SILT	HIGH	M'ST 20	MED	B	.	32	73
SB601728	19596		+10	-500	2	SOIL TALUS	BRN-MED	SILT	MED	M'ST 20	MED	B	.	18	88
SB601729	19597		+10	-600	2	SOIL TALUS	BRN-MED	SILT	LOW	M'ST 10	MED	B	.	15	54
SB601730	19598		+10	-700	2	SOIL TALUS	BRN-MED	SILT	LOW	M'ST 15	MED	B	.	15	60
SB601731	19599		+10	-800	2	SOIL TALUS	BRN-MED	SILT	LOW	M'ST 25	MED	B	.	18	55
SB601732	19600		+10	-900	2	SOIL RESID	BRN-MED	SILT	LOW	M'ST 15	MED	B	.	49	61
SB601733	19601		+10	-1000	2	SOIL COLLU	BRN-MED	SILT	LOW	M'ST 35	MED	B	.	13	48
SB601734	19589		+10	+100	2	SOIL TALUS	BRN-MED	SILT	LOW	M'ST 15	MED	B	.	30	49
SB601735	19588		+10	+200	2	SOIL TALUS	BRN-MED	SILT	MED	M'ST 15	MED	B	.	26	52
SB601736	19587		+10	+300	2	SOIL TALUS	BRN-MED	SILT	LOW	M'ST 20	LOW	B	.	18	36
SB601737	19586		+10	+400	2	SOIL RESID	BRN-MED	SILT	LOW	M'ST 15	LOW	B	.	18	51
SB601738	19585		+10	+500	2	SOIL TALUS	BRN-MED	SILT	LOW	M'ST 20	MED	B	.	21	48
SB601739	19584		+10	+600	2	SOIL TALUS	BRN-MED	SILT	LOW	M'ST 15	MED	B	.	89	70
SB601740	19583		+10	+700	2	SOIL TALUS	BRN-MED	SILT	LOW	M'ST 15	MED	B	.	17	69
SB601741	19582		+10	+800	2	SOIL RESID	BRN-MED	SILT	LOW	M'ST 35	MED	B	.	15	30
SB601742	19581		+10	+900	2	SOIL RESID	BRN-MED	SILT	LOW	M'ST 20	MED	B	.	10	36
SB601743	19580		+10	+1000	2	SOIL COLLU	BRN-MED	SILT	HIGH	M'ST 35	LOW	B	.	15	41

I=INSUFFICIENT SAMPLE X=SMALL SAMPLE E=EXCEEDS CALIBRATION C=BEING CHECKED R=REVISED

IF REQUESTED ANALYSES ARE NOT SHOWN \*RESULTS ARE TO FOLLOW

#### ANALYTICAL METHODS

Pb 20% HNO3 DECOMPOSITION / AAS

Zn 20% HNO3 DECOMPOSITION / AAS

STATEMENT OF EXPENDITURES  
FOR SOIL GRID GEOCHEMISTRY SURVEY  
ON SHA CLAIMS 9, 10, 12, and 13  
Covering the Period June 16 to 27, 1986

(1) Staff Time

D.L. Pighin - Supervision, report writing  
5 days @ \$250/day \$ 1,250.00

(2) Assaying and Sampling

ERL-Vancouver 484 samples @ \$12/sample 5,808.00

(3) Domicile Expenses

Rent, groceries, etc 500.00

---

\$ 7,558.00

---

IN THE MATTER OF THE

B.C. MINERAL ACT

AND

IN THE MATTER OF A SOIL GEOCHEMISTRY PROGRAMME

CARRIED OUT ON THE SHA 9,10,12 AND 13 CLAIMS

CRESTON AREA


in the Fort Steele Mining Division of  
the Province of British Columbia

More Particularly N.T.S. 82F/2

A F F I D A V I T

I, D.L. Pighin, of the City of Cranbrook, in the Province of British Columbia, make Oath and say:

1. That I am employed as a Geologist by Cominco Ltd. and as such, have a personal knowledge of the facts to which I hereinafter depose:
2. That annexed hereto and marked as Exhibit "A" to this my Affidavit is a true copy of expenditures incurred on a soil geochemistry programme, on the Sha 9,10,12 and 13 Mineral Claims.
3. That the said expenditures were incurred between the 16th day of June, 1986 and the 27th day of June, 1986 for the purpose of mineral exploration on the above noted claims.

  
-----  
D.L. PIGHIN  
Geologist

COMINCO LTD.

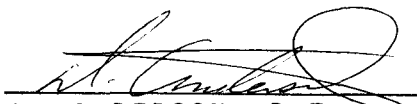
EXPLORATION

WESTERN DISTRICT

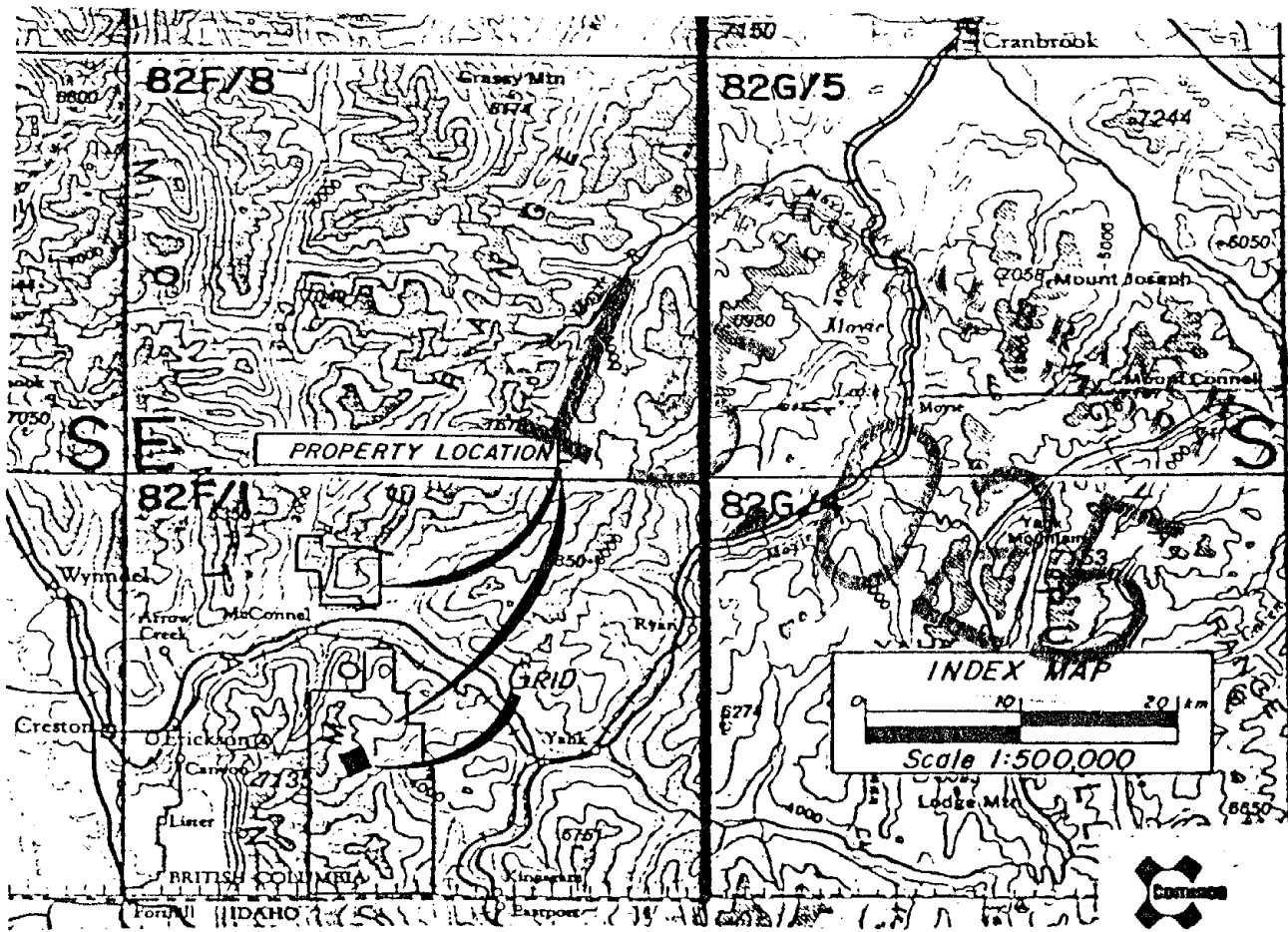
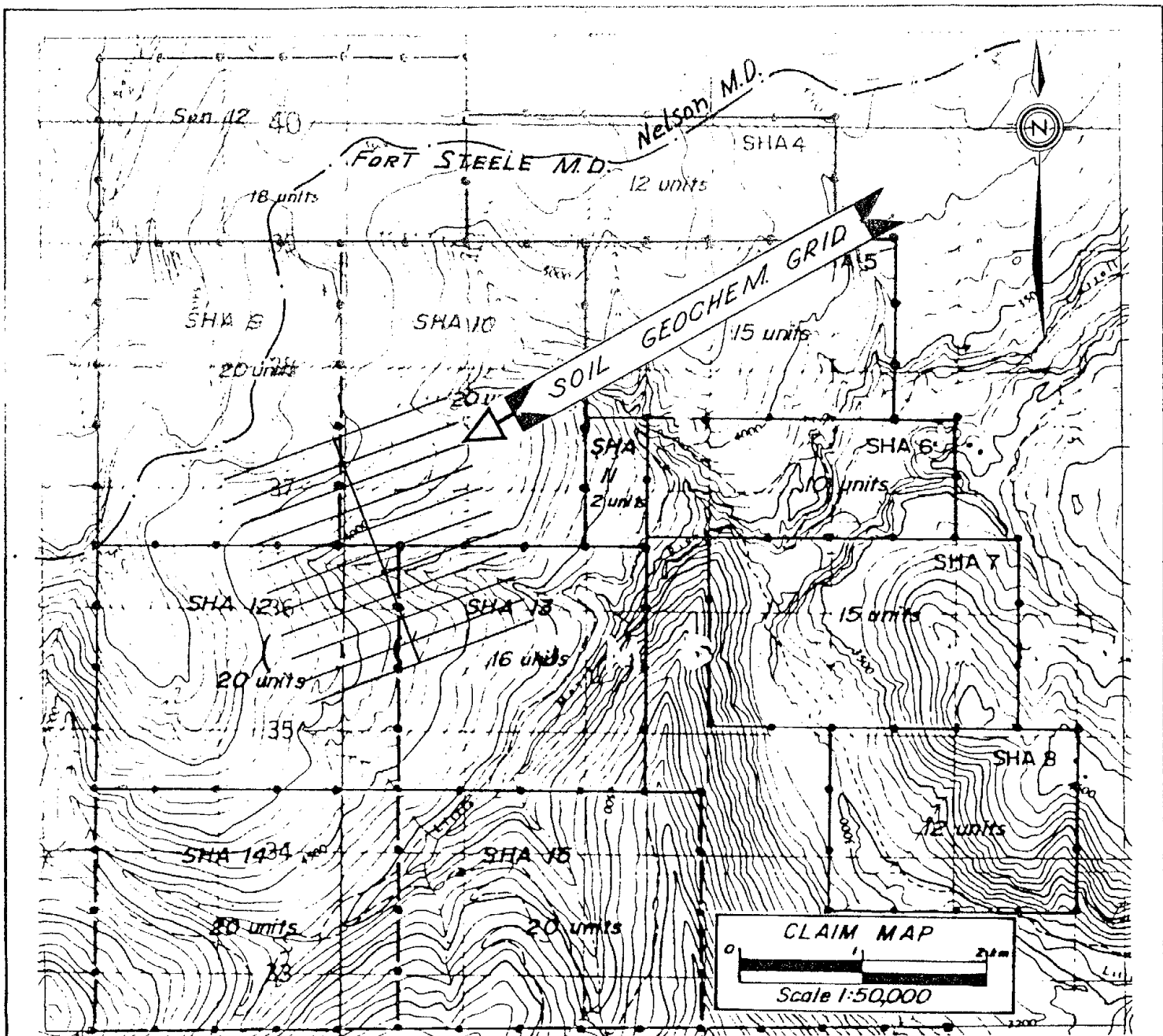
STATEMENT OF QUALIFICATIONS

D.L. PIGHIN has personally conducted many types of mineral exploration work for Cominco Ltd. over the last nineteen years.

I consider him well qualified to prepare this report.

  
D. ANDERSON, P.Eng.  
Project Geologist

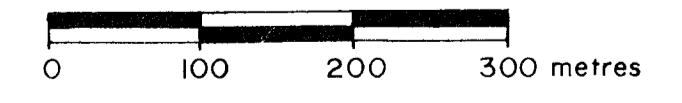
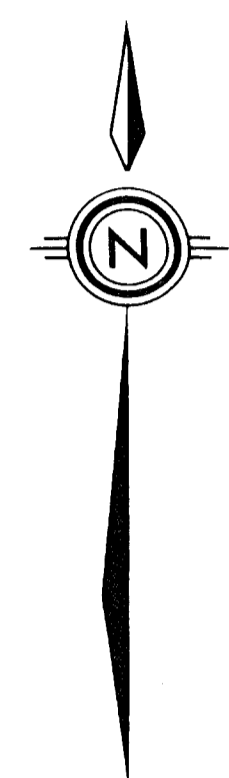




Drawn by: D.L. PIGHIN		Traced by:	
Revised by	Date	Revised by	Date

SOIL GEOCHEMISTRY  
RE: SHA CLAIMS 9, 10, 12 & 13

Scale: As Shown      Date: July 23/86      Plate: 1

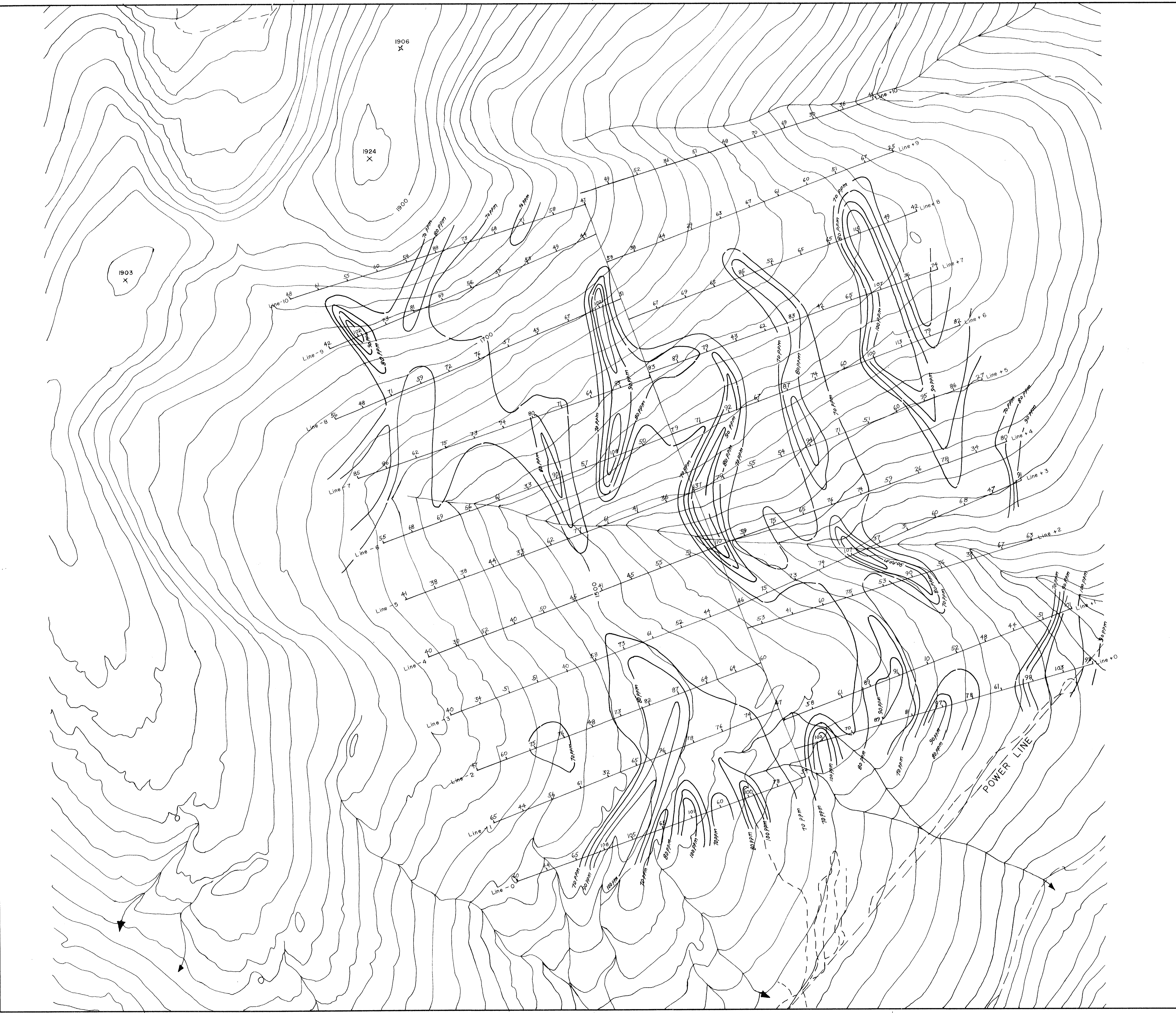


**SHA PROPERTY**

Drawn by: <i>John X. Rubin</i>	Traced by:
Revised by: <i>CSM</i>	Revised by: <i>CSM</i>

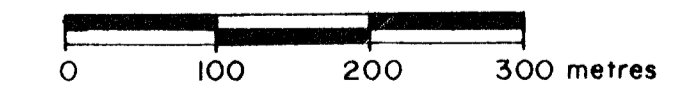
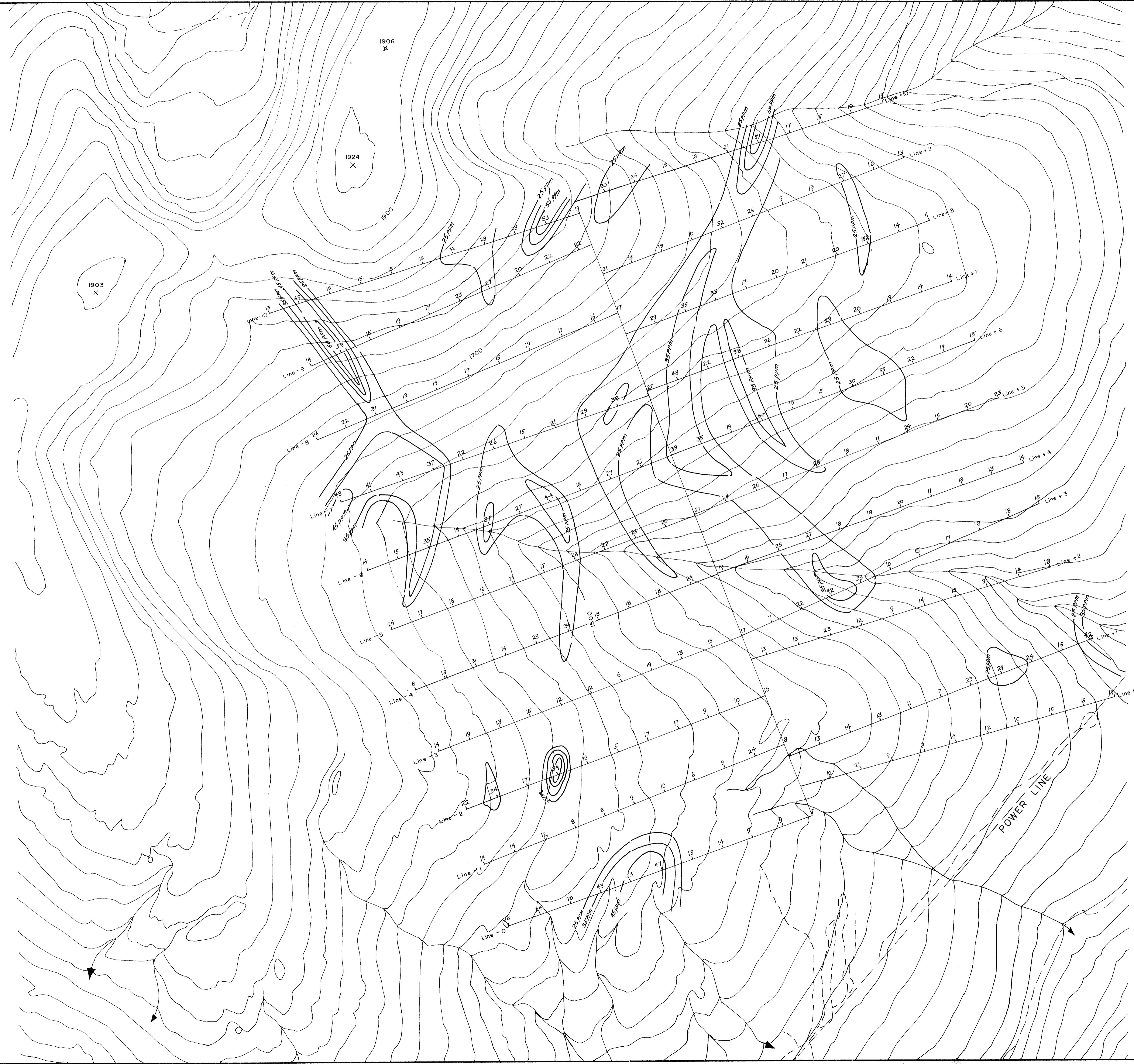
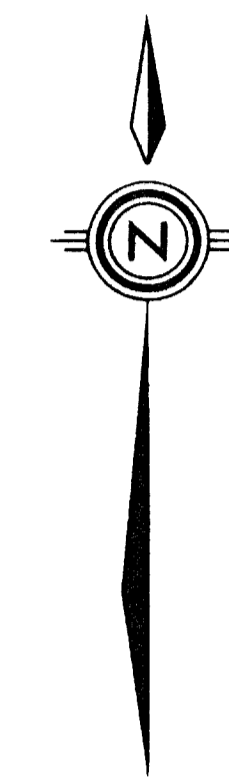
SOIL GEOCHEMISTRY  
 CENTRE GRID: Zn

Scale: 1:5000    Date: 1986 *July*    Plate: 2





GEOLOGICAL BRANCH  
 ASSESSMENT REPORT  
**15,025**



<b>SHA PROPERTY</b>			
Drawn by: <i>R. Allen</i>	Traced by:	<b>SOIL GEOCHEMISTRY</b> CENTRE GRID: <b>Pb</b>	
Checked by: <i>Alan</i>	Revised by: <i>Alan</i>		
Scale: 1:5000	Date: 1986 July	Plate: 3	FORM 210-009