

86-608-15196

NTS 92F/2E  
Lat. 49° ~~20'~~ 08.6'  
Long. 124° ~~43'~~ 42.5'

09/18/7

**GEOCHEMICAL ASSESSMENT REPORT**

**ON THE**

**PAT 3 CLAIM**

Franklin River - China Creek Drainage  
Port Alberni, British Columbia  
Alberni Mining Division

**Owner: William Poole**

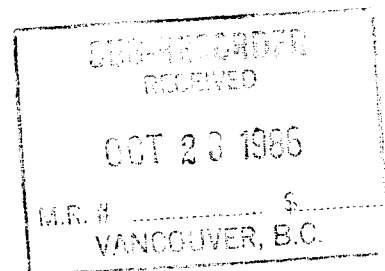
**Operator: Victoria Diego Resource Corporation**

**GEOLOGICAL BRANCH  
ASSESSMENT REPORT**

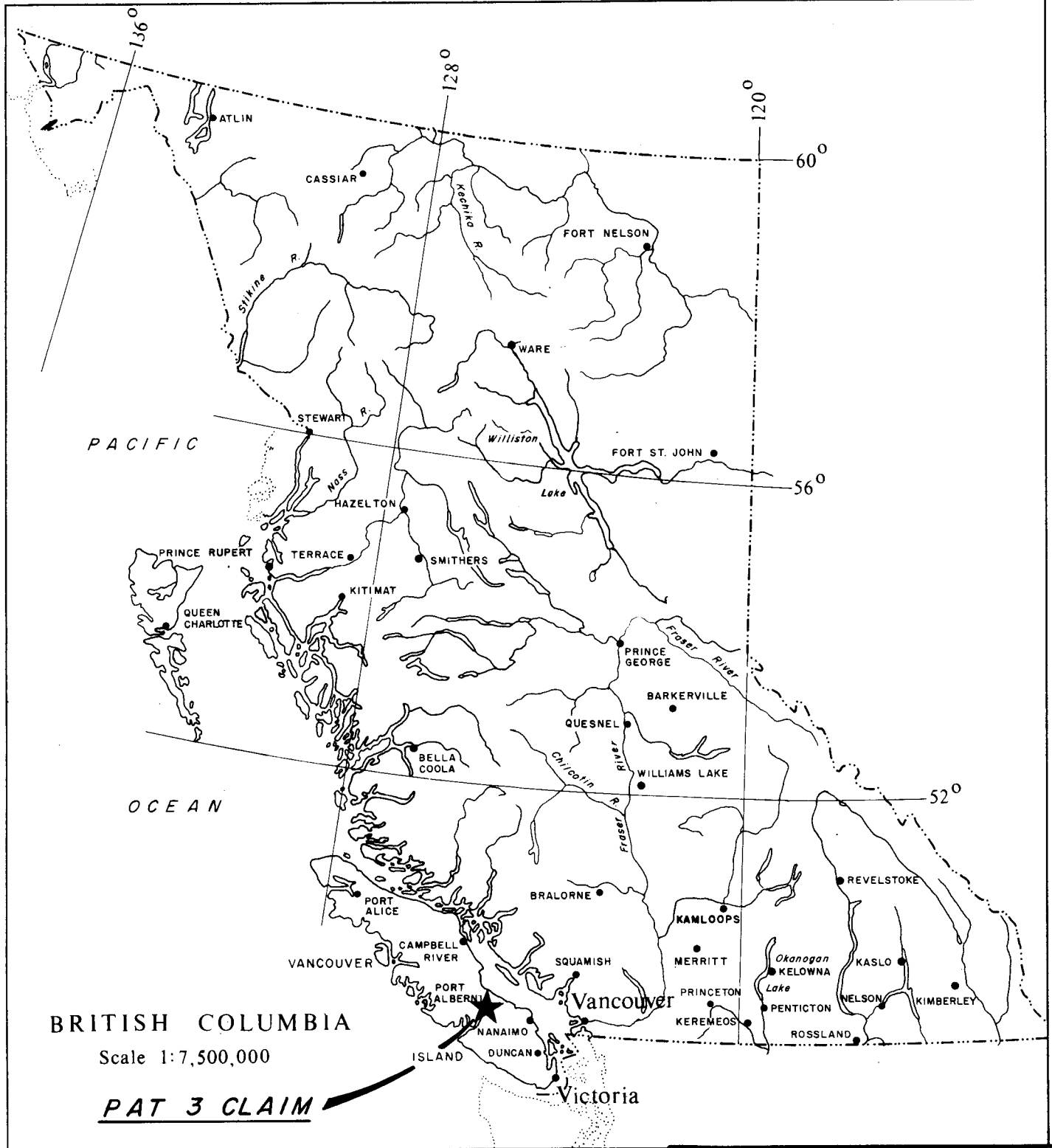
**15,196**

by  
Elizabeth A. Scroggins, Geologist  
**ASHWORTH EXPLORATIONS LIMITED**

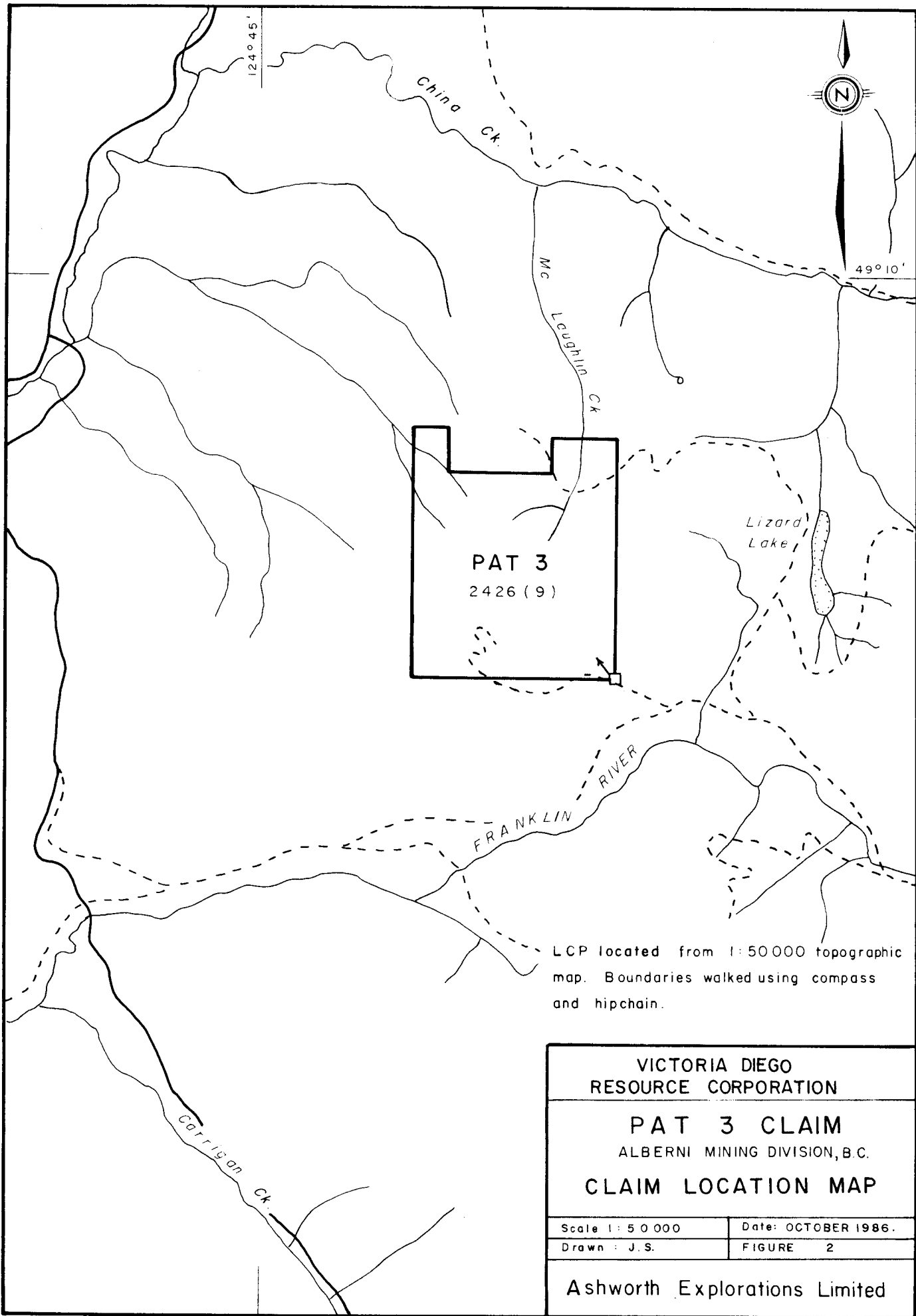
submitted  
October 15, 1986



**FILMED**



<b>VICTORIA DIEGO RESOURCE CORPORATION</b>	
<b>PAT 3 CLAIM</b> ALBERNI MINING DIVISION, B.C.	
<b>GENERAL LOCATION MAP</b>	
Scale 1:7 500 000	Date: OCTOBER, 1986.
Drawn : J.S.	FIGURE 1
<b>Ashworth Explorations Limited</b>	



LCP located from 1:50 000 topographic map. Boundaries walked using compass and hipchain.

<b>VICTORIA DIEGO RESOURCE CORPORATION</b>	
<b>PAT 3 CLAIM</b> ALBERNI MINING DIVISION, B.C.	
<b>CLAIM LOCATION MAP</b>	
Scale 1: 50 000	Date: OCTOBER 1986.
Drawn: J.S.	FIGURE 2
<b>Ashworth Explorations Limited</b>	

## CONTENTS

	<u>Page</u>
1. INTRODUCTION . . . . .	1
2. LOCATION AND ACCESS . . . . .	1
3. PHYSIOGRAPHY . . . . .	1
4. HISTORY . . . . .	1
5. PROPERTY STATUS . . . . .	2
6. GEOLOGY - PROSPECTING . . . . .	2
7. GEOCHEMISTRY . . . . .	3
7.1 Field Procedures . . . . .	3
7.2 Analytical Techniques . . . . .	3
7.3 Results . . . . .	3
7.4 Interpretation . . . . .	4
8. CONCLUSIONS . . . . .	5

## APPENDICES

APPENDIX A	GEOCHEMICAL RESULTS
APPENDIX B	ITEMIZED COST STATEMENT
APPENDIX C	STATEMENT OF QUALIFICATIONS

## LIST OF FIGURES

FIGURE 1	GENERAL LOCATION MAP
FIGURE 2	CLAIM LOCATION MAP
FIGURE 3	SAMPLE LOCATION AND GEOLOGY MAP (in pocket)
FIGURE 4	COPPER, LEAD, ZINC GEOCHEMISTRY (in pocket)
FIGURE 5	SILVER, GOLD GEOCHEMISTRY (in pocket)

## 1. INTRODUCTION

This report summarizes geochemical and geological work done on the Pat 3 claim on September 24, 1986. Ashworth Explorations Limited was retained by William Poole (Owner) and Victoria Diego Resource Corporation (Operator) to perform assessment work and prepare a report.

## 2. LOCATION AND ACCESS

The Pat 3 property is located 120 kilometers west of Vancouver or 12 kilometers southeast of Port Alberni on Vancouver Island (see Figure 1). It is within NTS map sheet 92F/2 in the Alberni Mining Division.

Access is from Port Alberni along the Museum Creek haul road. This leads to a series of logging roads, operated and maintained by MacMillan-Bloedel Ltd. and provides excellent four wheel drive access to the Mount Patlicant area. Roads are present along the northeastern edge of the claim and a trail enters the western portion. A logging road which provided access to the southern end of the claim has recently been blocked off terminating access to this area, however the road still offers good walking access.

## 3. PHYSIOGRAPHY

The property is situated within the western coastal forest region characterized by abundant rainfall and heavy growth of large timber including fir, pine and cedar. The claim is heavily logged to the south, east and north creating lush growths of fireweed and thicket.

Patlicant Mountain is located in the middle of the claim. Slopes vary from shallow to steep with the steepest area being the ridge to the southwest of Patlicant Mountain where the slopes were measured at 40°. Highest elevation is 1236 metres at the top of Patlicant Mountain to a low of 600 metres giving a total relief of 636 metres. Drainage is into China Creek to the north and Franklin River to the south, both of which flow into Alberni Inlet.

## 4. HISTORY

Mineral prospecting in the area has been active since placer gold was mined on China and Franklin Creeks during the 1860's.

Development of lode gold prospects soon followed with eight properties in production by the 1940's. Low gold prices combined with low tonnage of the vein deposits inhibited further development.

In the 1960's Gunnex Limited acquired prospecting rights on certain parts of the E & N Railway Land Grants. Work done included a helicopter aeromagnetic survey, a regional soil and silt sampling program, plus regional geological mapping combined with mineral showing examinations.

To date, the area still remains active. A diamond drill program was carried out by Jan Resources on the Black Panther Mine - Summit Lake area in 1980-81, which was further developed by Lode Resources Corporation in 1983-84. Westmin Mines Ltd. is currently undertaking a diamond drill program on the Thistle Mine property 3 km west of Mt. McQuillan, 6 km southeast of the property.

Other than work done by Gunnex Ltd. in the 1960's no known work has been done in the Patlicant Mountain area. A small copper showing was discovered on what is now the northern part of the Pat 3 claim. The 1985 work program revealed four anomalous gold values, three to the north and one to the south, which were low to moderate.

## 5. PROPERTY STATUS

The Pat 3 claim was staked on September 12, 1984. It is comprised of 20 units (record no. 2426) and expires on September 27, 1985. It is owned by William Poole and operated by Victoria Diego Resource Corporation (see Figure 2). Assessment work was performed in September, 1985 by Ashworth Explorations Limited and applied toward one year of work.

## 6. GEOLOGY - PROSPECTING

The property is underlain by carboniferous sediments of the Cretaceous Nanaimo Group, which is widespread in the area and extensively exposed in the Patlicant Mountain region. The unit consists of a dark gray-black siltstone, carbonaceous and fossiliferous shale and coal. The Nanaimo Group is intruded by Tertiary Intrusions of mainly hornblende-quartz diorite and dacitic hornblende-feldspar porphyry. These intrusions are associated with Au-Ag and base metal mineralization (Mt. Spencer and Mt. McQuillan area), which indicates a later period of mineralization associated with intrusive bodies that took place after the Buttle Lake and Mount Sicker massive sulphides were deposited.

The area concentrated on for prospecting was the northeast corner of the claim at the headwaters of McLaughlin Creek. A small copper showing allegedly occurs in the creek but this was not found. Three anomalous gold values in the northern corner of the claim were reported from the 1985 program, and were further prospected.

The main rock unit in this portion of the claim is a granodiorite porphyry of the Tertiary Intrusion geological unit. This unit intrudes the Nanaimo Group in the north.

## 7. GEOCHEMISTRY

### 7.1 Field Procedures

The purpose of the 1986 program was to investigate any anomalous values which were reported from the previous years work. Soil samples were taken in the areas of interest. Geological samples were taken where rust staining and vein-like structures occurred.

Altogether, 25 samples were collected, consisting of 22 soil samples and 3 rock samples. Soil samples were taken at a depth of 30 cm in the B-horizon using kraft gusset envelopes. Some sample depths were slightly greater due to an increase in organic material in certain areas.

### 7.2 Analytical Techniques

Vangeochem Lab Limited was retained to perform the analysis. All samples were dried and sieved to minus 80 mesh. Elements Cu, Pb, Zn and Ag were determined by atomic absorption. Arsenic was determined colorimetrically by comparing the intensity of the colour of a prepared complex with known standards. Gold was determined in rock samples by fire assay and detected by atomic absorption spectroscopy. The soil samples were analysed for gold by solvent extraction and detected by atomic absorption spectroscopy.

### 7.3 Results

For complete geochemical lab report see Appendix A. Due to the small number of samples obtained, statistical calculations were not performed. Only the high values will be examined in this section.

#### 7.3.1 Copper

Copper exhibits a wide range in values. The highest value (1,420 ppm) comes from an outcrop of Tertiary

Intrusions in the northeast corner of the claim, along a logging road. Only two other samples yielded 100 ppm values, both of which occurred in soil samples. These were in two different areas in the northeast corner.

#### 7.3.2 Lead

The lead values are quite low and range from 8 ppm to 30 ppm. No distinct anomalous values occur.

#### 7.3.3 Zinc

Zinc values display a slightly larger range in values than the lead values, that being 11 ppm to 120 ppm. Two high values occur in soils taken along a logging road. These values correspond with relatively high arsenic values.

#### 7.3.4 Silver

Two silver values of 1.0 ppm and 2.0 ppm were obtained in rock samples in the northeastern part of the claim. This highest silver of 2.0 ppm correlates with the highest Cu value. This sample had no reported Au or As. The sample with 1.0 ppm contained very little Cu.

#### 7.3.5 Gold

The gold values obtained in this area are quite low and no distinct anomalies are reported. The three rock samples were below detection limits and the soils ranged from 5 ppb to 25 ppb.

#### 7.3.6 Arsenic

Two soil samples yielded high results and these correlated with the highest Zn values and a high Cu. All other results were below 20 ppm.

### 7.4 Interpretation

Two areas of interest occur in the northeast corner of the claim. The first being in the bend of the logging road which crosses McLaughlin Creek. The sample yielding the encouraging results (1,420 ppm Cu, and 2.0 ppm Ag) occurs in a lense-like sulphide-rich body of about 1 m's length. The surrounding rocks are Tertiary Intrusions and intense weathering of the rocks makes it difficult to determine its full extent.



The second area occurs on the southernmost logging road recently mapped in by this year's crew. Two soil samples assayed similar values in zinc and arsenic. The high arsenic values are thought to be derived from the north, on the adjoining mineral claim which hosts an arsenic showing. It is also indicative of arsenopyrite present in the area.

## 8. CONCLUSIONS

The Pat 3 claim is underlain by Cretaceous sediments which have been intruded by granodiorite porphyrys, Tertiary in age. These intrusions are associated with several prospects in the area.

The 1986 program consisted of soil sampling areas defined as anomalous by the 1985 report. Geological sampling was also carried out where interesting outcrop was exposed. Two areas of interest have been delineated, one at the headwaters of McLaughlin Creek and one toward the eastern boundary of the claim, along a logging road. These areas both warrant further study.

It is recommended that a program of detailed geological mapping and sampling, as well as closed spaced soil sampling be undertaken. Detailed work should be focussed on the two areas of interest. The remainder of the property not already sampled should be examined. To facilitate the closed spaced sampling, a grid line should be set. A geophysical survey should be performed to delineate any structures on the property. Future work consisting of trenching and drilling would be contingent upon favourable results from the 1987 program.

Respectfully submitted,

Elizabeth A. Scroggins  
**ASHWORTH EXPLORATIONS LIMITED**

EAS:jls

**APPENDIX A**

**GEOCHEMICAL RESULTS**



# VANGEOCHEM LAB LIMITED

MAIN OFFICE  
1521 PEMBERTON AVE.  
NORTH VANCOUVER, B.C. V7P 2S3  
(604) 986-5211 TELEX: 04-352578

BRANCH OFFICE  
1630 PANDORA ST.  
VANCOUVER, B.C. V5L 1L6  
(604) 251-5656

REPORT NUMBER: 850490 GA

JOB NUMBER: 850490

ASHWORTH EXPLORATION LTD.

PAGE 1 OF 1

SAMPLE #	Cu	Pb	Zn	Ag	Au	As
	ppm	ppm	ppm	ppm	ppb	ppm
PT-85-3 RS 25	50	30	88	.4	nd	10
PT-85-3 RS 32	2	15	55	1.0	nd	2
PT-85-3 RS 33	1420	19	74	2.0	nd	nd
PT-85-3 SS 20	47	25	31	.3	15	20
PT-85-3 SS 21	5	8	11	.2	5	2
PT-85-3 SS 22	20	17	34	.4	5	10
PT-85-3 SS 23	19	19	35	.4	5	10
PT-85-3 SS 24	121	24	75	nd	20	10
PT-85-3 SS 25	70	20	62	.2	20	10
PT-85-3 SS 27	34	15	35	.5	15	4
PT-85-3 SS 28	25	20	40	.5	10	30
PT-85-3 SS 29	35	20	23	.4	10	20
PT-85-3 SS 30	48	24	45	.4	15	20
PT-85-3 SS 31	15	15	15	.3	10	4
PT-85-3 SS 34	39	16	22	.5	10	10
PT-85-3 SS 35	33	20	30	.4	10	2
PT-85-3 SS 36	55	20	81	.5	5	10
PT-85-3 SS 37	86	15	75	.4	25	4
PT-85-3 SS 38	55	17	60	nd	25	4
PT-85-3 SS 39	71	25	99	.6	20	10
PT-85-3 SS 43	101	20	120	.2	25	100
PT-85-3 SS 44	43	15	100	.4	20	300
PT-85-3 SS 45	81	16	74	.6	10	10
PT-85-3 SS 46	97	20	50	.4	20	4
PT-85-3 SS 47	96	17	60	.1	10	10

DETECTION LIMIT

nc = none detected

1 2

-- = not analysed

1 0.1 5

is = insufficient sample

2

**APPENDIX B**

**ITEMIZED COST STATEMENT**

**APPENDIX B**  
**ITEMIZED COST STATEMENT**

Wages

Geologist, Sept. 25/86 1.5 days @ \$225/day (incl. mob and demob)	\$ 337.50
One Geological Technician, Sept. 25/86 1.5 days @ \$150/day (inc. mob and demob)	225.00
Supervision, 1 day @ \$450/day	450.00

Food and Accommodation

Sept. 24/86, 4 man days @ \$60/day	240.00
------------------------------------	--------

Transportation

Truck Rental and Fuel, 2 days @ \$90/day	\$180.00	
Ferry fees	<u>35.00</u>	215.00

Analysis

All samples analyzed for Cu, Pb, Zn, Ag, Au, As

22 soil samples @ \$12.85/sample	\$282.70	
3 rock samples @ \$16.75/sample	<u>50.25</u>	332.95

Materials

75.00

Filing Fees (20 units @ \$5.00/unit)

100.00

Report and Drafting

250.00

TOTAL

\$2,225.45

**APPENDIX C**

**STATEMENT OF QUALIFICATION**

APPENDIX C

STATEMENT OF QUALIFICATION

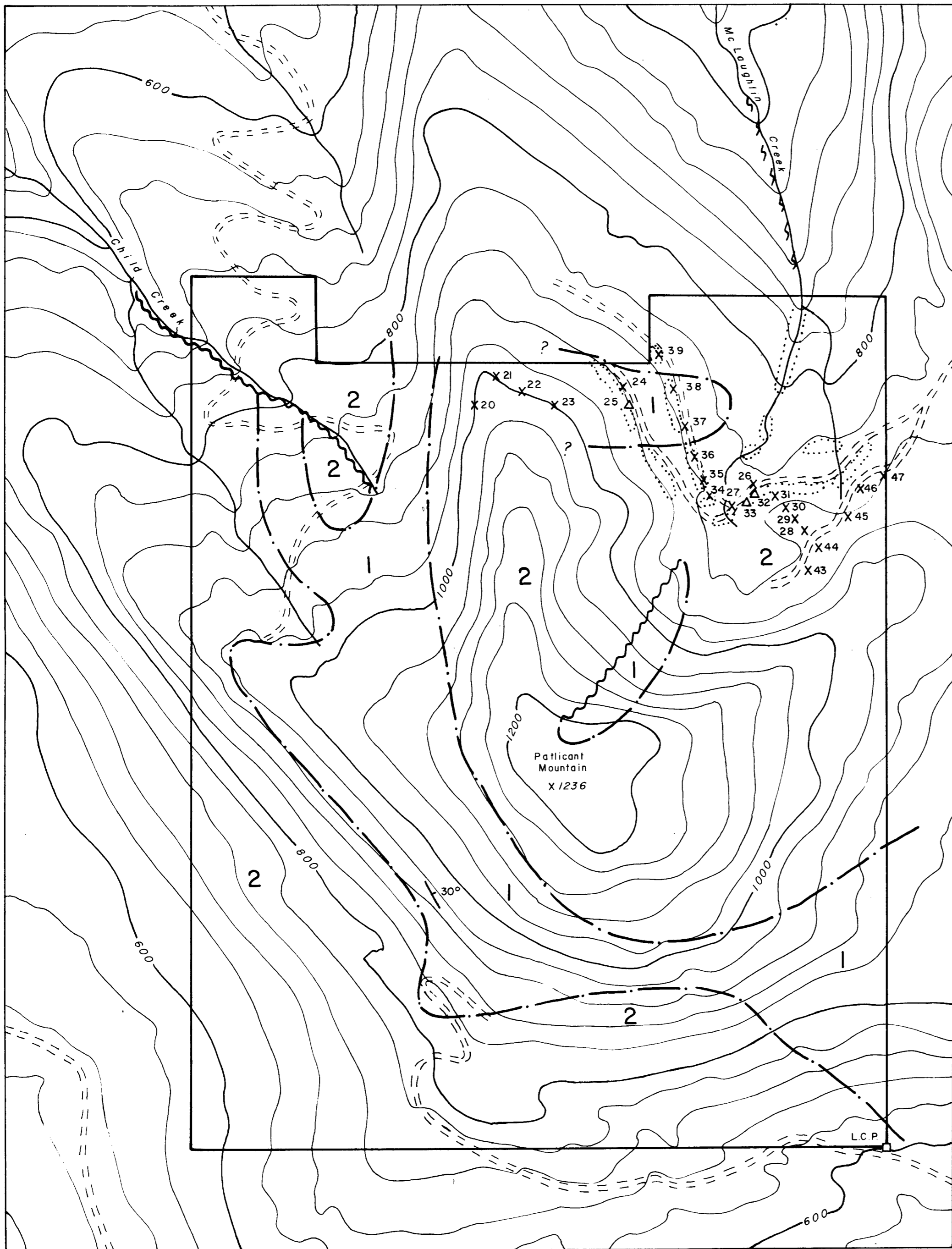
I, ELIZABETH A. SCROGGINS, of P.O. Box 1457, Station A, Vancouver, B.C., V6C 2P7 do hereby state that:

1. I am a graduate of The University of Western Ontario, in London, Ontario with a B.Sc.(Hon) degree in Geology, 1986.
2. I have actively pursued my career as a geologist for four years in Ontario, Alberta and British Columbia.
3. I have no direct or indirect interest in the property or securities of Victoria Diego Resource Corporation, nor do I expect to receive any such interest.

Respectfully submitted:

Elizabeth A. Scroggins, B.Sc. (Hon)  
**ASHWORTH EXPLORATIONS LIMITED**

Dated at Vancouver, B.C.  
October 15, 1986



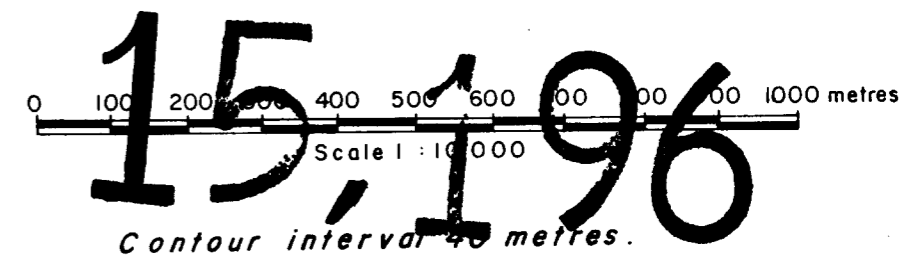
**LEGEND**

- 1 Cretaceous Nanaimo Group: shale, siltstone, sandstone.
- 2 Tertiary Intrusions: quartzdiorite-granodiorite porphyry.

Geology except for northeast corner by H. Laanela, Gunnex Ltd., 1965.

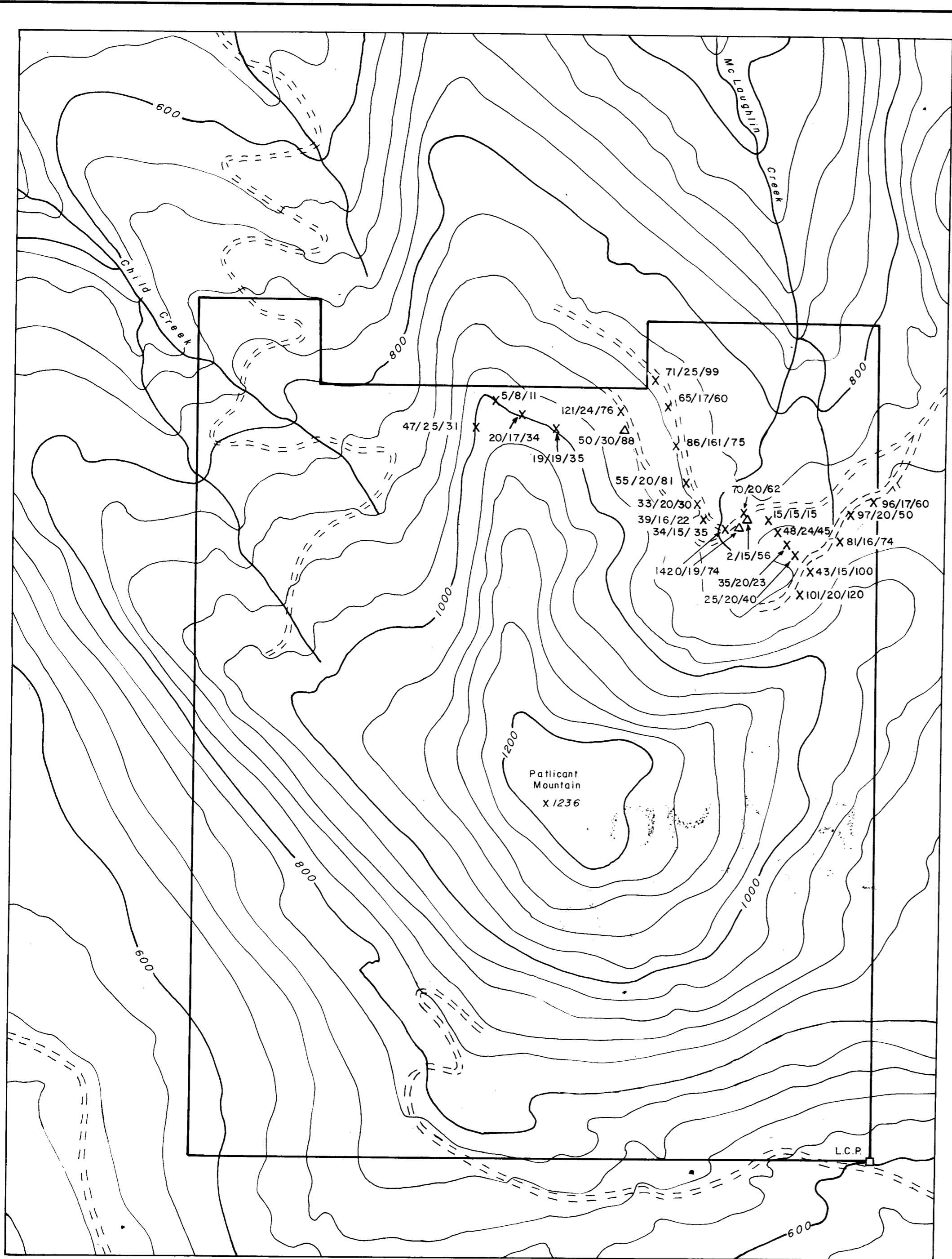
- · — · — Geological contact
- ~~~~~ Fault, observed, inferred
- Outcrop, from 1985 mapping
- Bedding
- L.S.P. Legal claim post
- ┌ Approximate claim boundary
- == == == Road
- △ 33 Rock sample site and number
- X 43 Soil sample site and number

**GEOLOGICAL BRANCH**  
**ASSIGNMENT REPORT**  
 All sample numbers have prefix PT 865.



<b>VICTORIA DIEGO RESOURCE CORPORATION</b>	
<b>PAT 3 CLAIM</b> ALBERNI MINING DIVISION, B.C.	
<b>SAMPLE LOCATION AND GEOLOGY MAP</b>	
Design by : L. S.	Date : OCTOBER 1986.
Drawn by : J. S.	Map : 3
<b>Ashworth Explorations Limited</b>	

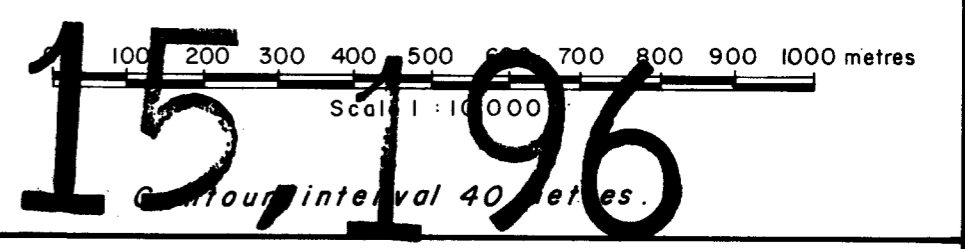




**LEGEND**

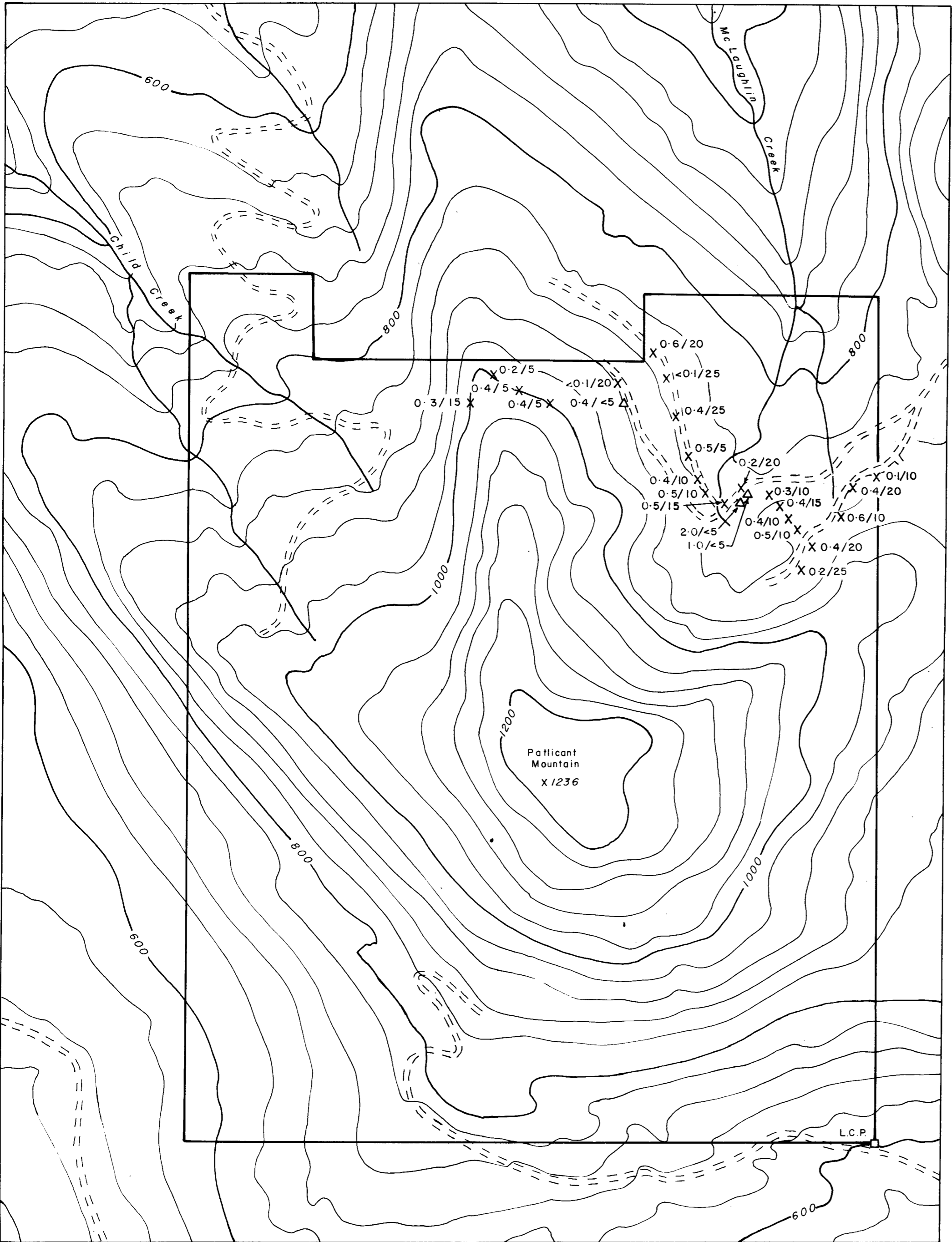
- L.S.P. Legal claim post
- └─┘ Approximate claim boundary
- ==== Road
- Δ Rock sample site
- X Soil sample site

19/6/82 Cu ppm, Pb ppm, Zn ppm  
**GEOLOGICAL BRANCH**  
**ASSESSMENT REPORT**



**15,196**

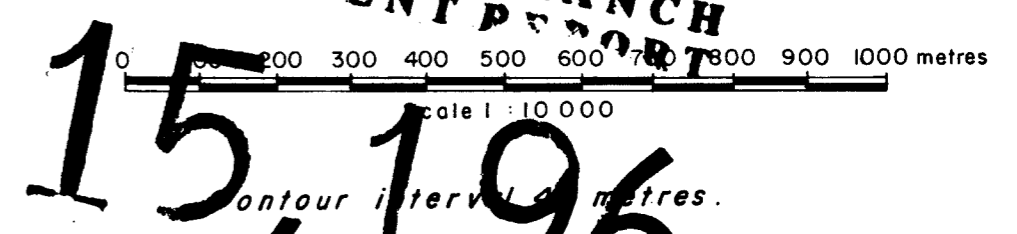
<b>VICTORIA DIEGO RESOURCE CORPORATION</b>	
<b>PAT 3 CLAIM</b> ALBERNI MINING DIVISION, B.C.	
<b>GEOCHEMICAL SURVEY</b> COPPER, LEAD, ZINC RESULTS	
Design by: L. S.	Date: OCTOBER 1986.
Drawn by: J. S.	Map: 4
<b>Ashworth Explorations Limited</b>	



**LEGEND**

- L.S.P. Legal claim post
- └─┘ Approximate claim boundary
- ==== Road
- Δ Rock sample site
- X Soil sample site
- Ag ppm, Au ppb

**GEOLOGICAL BRANCH  
ASSESSMENT REPORT**



<p>VICTORIA DEGR RESOURCE CORPORATION</p>	
<p><b>PAT 3 CLAIM</b> ALBERNI MINING DIVISION, B.C.</p> <p><b>GEOCHEMICAL SURVEY</b> <b>SILVER, GOLD RESULTS</b></p>	
Design by: L. S.	Date: OCTOBER, 1986.
Drawn by: J. S.	Map: 5
<p><b>Ashworth Explorations Limited</b></p>	