

86-569-15273

10/87

STATEMENT OF EXPLORATION AND DEVELOPMENT

1986

MYRINDA CLAIM

OMINECA MINING DIVISION MAPSHEET 93N/~~130~~ 12W

55° 45' N Lat.

125° 46' W Long.

for

KIRK MAKEPEACE

P.O. BOX 126

WHITE ROCK, B.C.

by

KIRK MAKEPEACE

P.O. BOX 126

WHITE ROCK, B.C.

operator

JADE WEST RESOURCES LTD.

date submitted

OCTOBER 7, 1986

FILMED

GEOLOGICAL BRANCH
ASSESSMENT REPORT

15,273

STATEMENT OF DEVELOPMENT AND EXPLORATION

TABLE OF CONTENTS

INDEX	2
1986 EXPLORATION PROGRAM	3
OBJECTIONS AND RESULTS	3
PROPERTY DESCRIPTION	3
DRILL REPORT AND ADDITIONAL DRILL LOG INFORMATION	3 A
STATEMENT OF COSTS	4
AUTHOR'S QUALIFICATIONS	4
index map # 1	5
index map # 2	6
index map # 3	7
index map # 4	8
index map # 5	9

STATEMENT OF EXPLORATION AND DEVELOPMENT

1986 EXPLORATION PROGRAM

During the period of September 30 to October 2, 1986, a short drill program was undertaken on the Myrinda Claim. A crew of 3 people supervised by the author used JKS Packsack drills to drill 3 holes on an in-situ deposit of nephrite jade.

OBJECTIONS AND RESULTS

The objection of the drill program was to determine if the in-situ nephrite held any promise of containing commercial grade jade to warrant further exploration and possible mining.

Results indicate that the deposit tested was very low quality jade unsuitable for any commercial purpose. The jade was badly fractured and was bluish-grey with only minor intrusions of green. However further deposits were uncovered a short distant away which may have more favourable results during a later drill program.

Unusually high costs per metre were encountered due to the limited drilling required to test the deposit as well as the hardness of jade. Most of the costs were in setting up the drill sites and arranging for water supply to the area.

RECOMENDATIONS

Another drill program should be undertaken to test newly uncovered deposits on the property. Late spring or early summer would be advantageous due to a shortage of water in late summer and fall. Further prospecting to determine if the deposits contain similar features to the Ogden Mtn. deposits which are quite commercial.


PROPERTY DESCRIPTION AND ACCESS

Area is situated 8 kilometres West of the Omineca-Pinchi fault system, a significant thrust structure which brings rocks of the Cache-Creek (Penn-Perm age) in contact with rocks as young as Upper Cretaceous (Sustut Group sediments) Nephrite is found on property in in-place thrusts of rock where underlying serpentine is in contact with country rock.

Access to the site is via B.C. Forests access road North of Takla lake approx. 40 kilometres from the village. There is also access available by float plane to Akus Lake about 1000 metres south/west of the property.

CLAIMS AND DRILL LOGS

All work was undertaken on the 'Myrinda' mineral claim, Record Number 7359. Detailed core logs are not kept, but deposits are evaluated for production on the basis of jade quality estimated from core and all cores are kept at Jade West's office, 1755-140th Street, White Rock, B.C.


KIRK MAKEPEACE

STATEMENT OF DEVELOPMENT AND EXPLORATION

DRILL REPORT AND ADDITIONAL DRILL LOG INFORMATION

The drill program undertaken on the Myrinda claim during the period September 30 to October 2, 1986 consisted of 3 short holes of 1 metre each in depth. This depth represented the average visible depth of lens of nephrite jade located on the property. Three holes were chosen to represent a reasonable average of possible quality of nephrite in the visible lens. It is the opinion of the author that additional holes or deeper drill depths on this particular lens would not have realized significantly different results.

The holes are not for blasting purposes .

Although an interpretation of drill cores by the author reveals that the nephrite present as indicated by drilling does not offer any commercial nephrite reserves, it is very possible that the area contains further deposits of commercial nephrite that could be discovered by a trenching program near the site of the drilled lens.

As with other significant nephrite reserves located at Ogden Mtn. in the Omineca mining district and the Kutcho Creek/Provencher Lake in the Liard mining district, it is quite common that the exposed and weathered in-situ deposits of nephrite have little or no commercial value. However as have been later discovered in these two locations, much larger and valuable deposits are often located nearby.

Surface plan of drill holes located on index map # 5 on page 9.

STATEMENT OF EXPLORATION AND DEVELOPMENT

1986 DRILLING COSTS (MYRINDA CLAIM)

A. WAGES:

<u>NAME:</u>	<u>RATE</u>	<u>DATES</u>	<u>TOTAL</u>
KIRK MAKEPEACE	\$150/day	Sept 30 - Oct 2, 1986	\$ 450.00
CHRIS KALYN	\$100/day	Sept 30 - Oct 2, 1986	\$ 300.00
RICH HAMPTON	\$100/day	Sept 30 - Oct 2, 1986	\$ 300.00
WALTER MAKEPEACE	\$100/day	Sept 30 - Oct 2, 1986	\$ 150.00
		<u>TOTAL WAGES</u>	<u>\$1200.00</u>

B. SUPPLIES AND SERVICES

Accomodation: Takla Post		\$150.00
Transportation: Tilden Rent-A-Truck		\$875.75
Drilling Supplies: Pothier Enterprises		\$110.00
Magneto Sales		\$449.80
Fuel: Takla Post		\$120.00
Food: Walkay Holdings		\$500.00
	<u>TOTAL SUPPLIES & SERVICES</u>	<u>\$2205.55</u>
	<u>TOTAL COSTS</u>	<u>\$ 3405.55</u>

AUTHOR'S QUALIFICATIONS

Author's qualifications based on field experience in relationship to nephrite jade exploration and mining in the Province of British Columbia.

- 1976 - 1978 Field Manager in charge of Exploration and Mining for Nephro-Jade Canada Ltd. of Vancouver. Supervised by Barry Price (B.Sc.-Honours Geology; M.Sc-Economic Geology both from the University of British Columbia)
- 1979 - 1981 Operations Manager for Primex Explorations Ltd., extensive field experience on jade properties in Liard and Omineca mining division.
- 1982 - 1985 Mining consultant for Jade World of Vancouver, B.C.
- 1982 - Present
President of Jade West Resources Ltd., of White Rock, B.C.

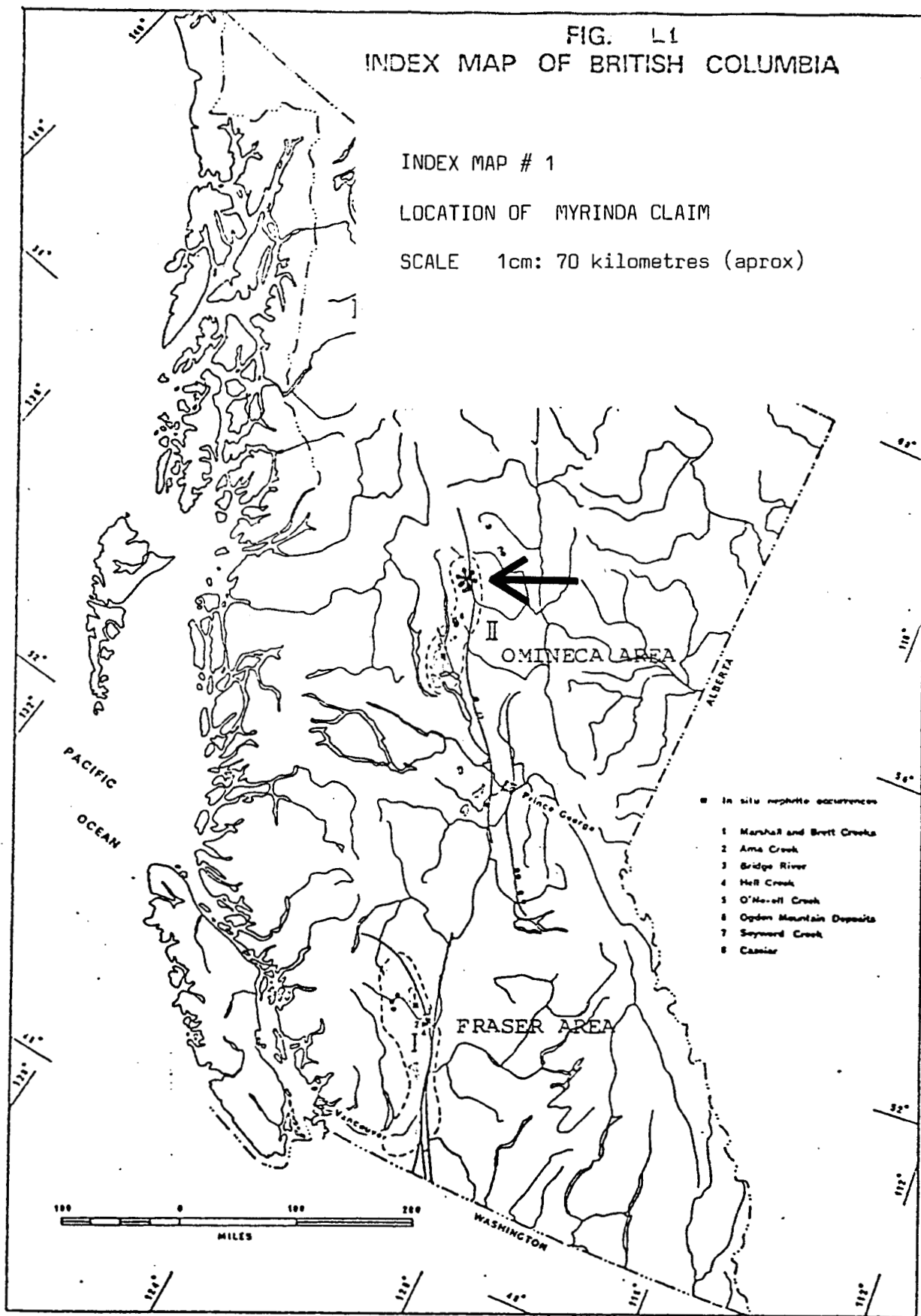


FIG. L1
INDEX MAP OF BRITISH COLUMBIA

INDEX MAP # 1

LOCATION OF MYRINDA CLAIM

SCALE 1cm: 70 kilometres (approx)



(From Fraser, J.R., 1973)

MYRINDA CLAIM
X

INDEX MAP # 2

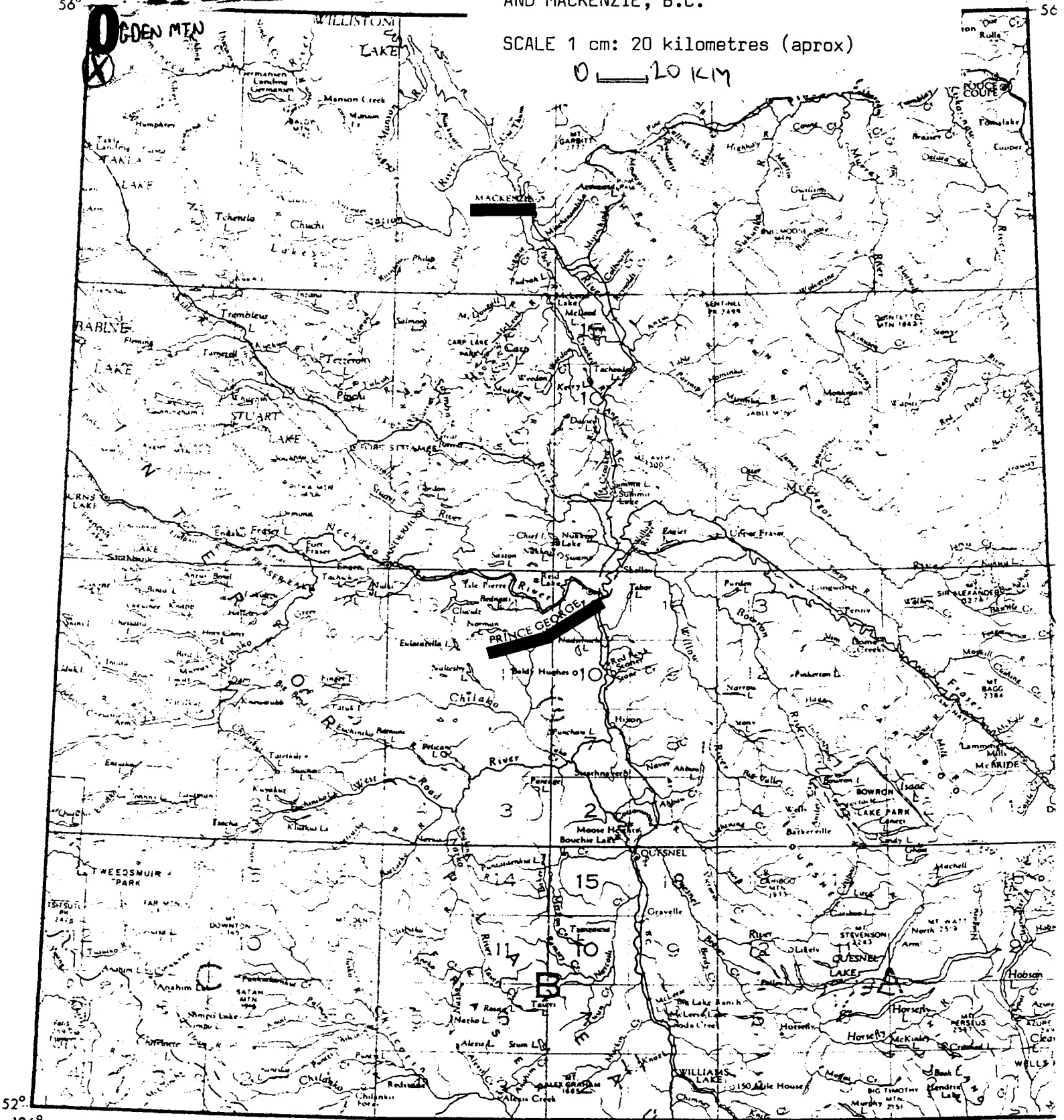
LOCATION OF MYRINDA CLAIM
POSITION OF TOWNS OF PRINCE GEORGE
AND MACKENZIE, B.C.

126°
56°

120°
56°

SCALE 1 cm: 20 kilometres (aprox)

0 — 20 KM



52°
126°

INDEX MAP # 3

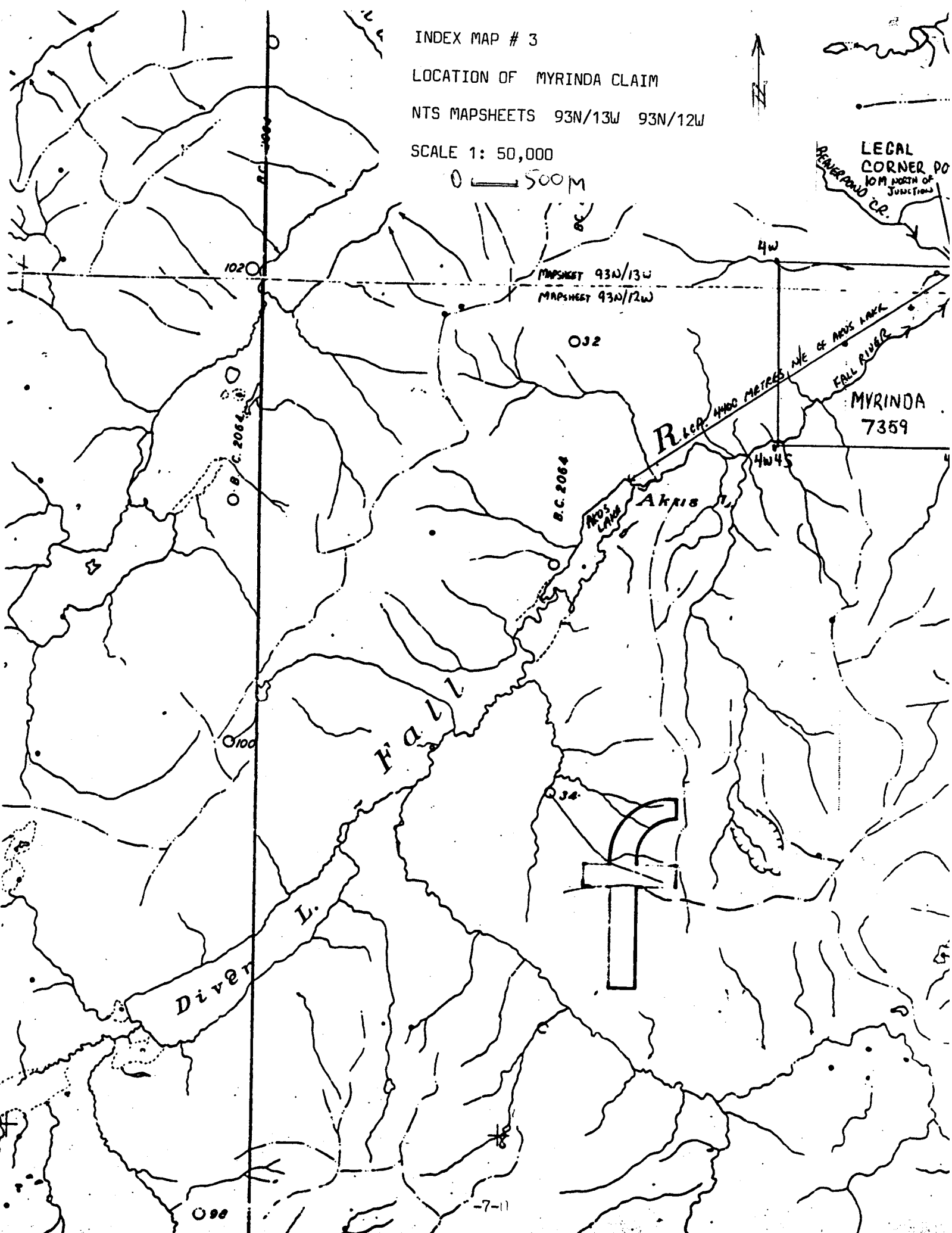
LOCATION OF MYRINDA CLAIM

NTS MAPSHEETS 93N/13W 93N/12W

SCALE 1: 50,000

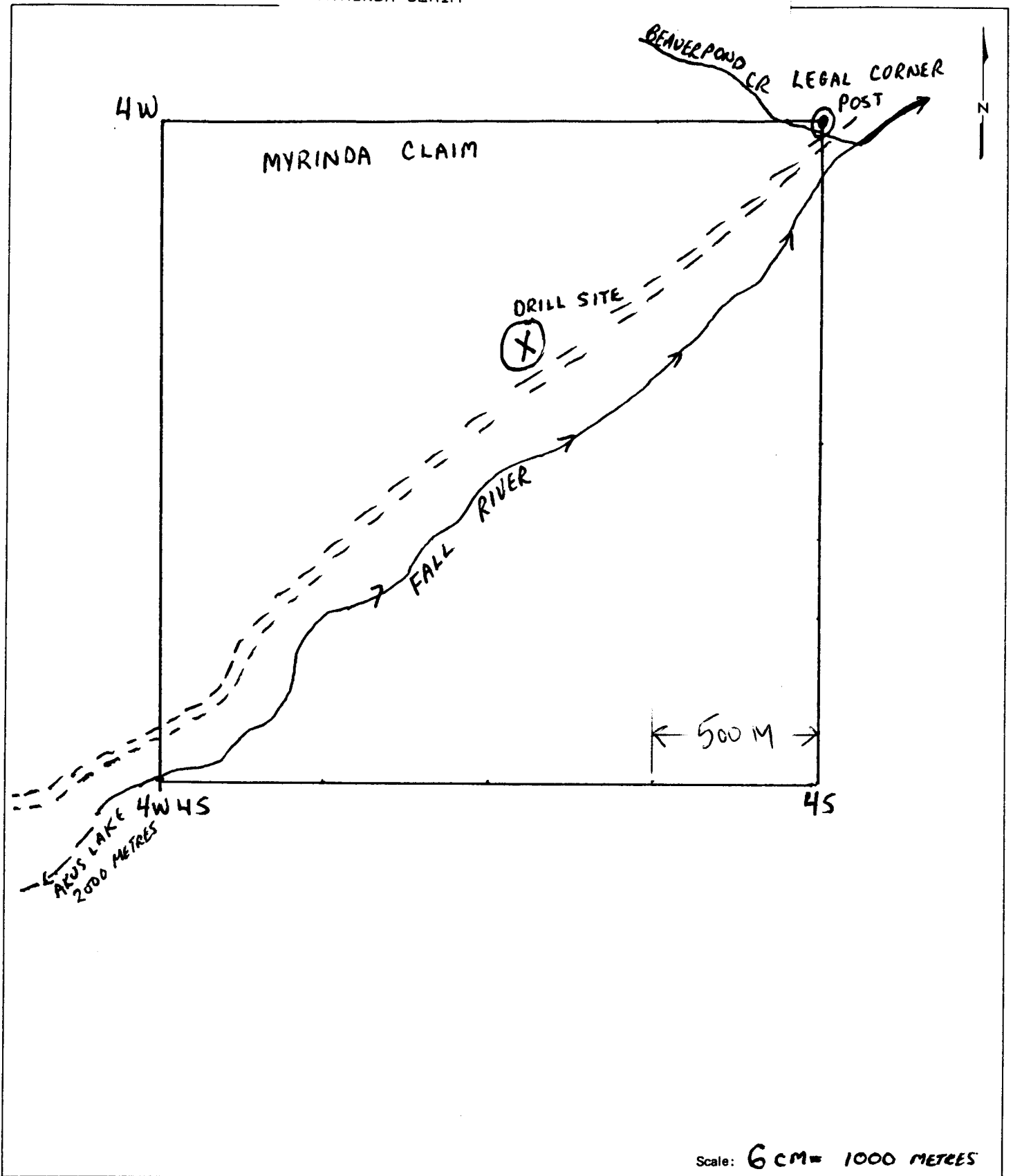
0 — 500 M

LEGAL
CORNER PO
10M NORTH OF
JUNCTION
REVEREND CR.

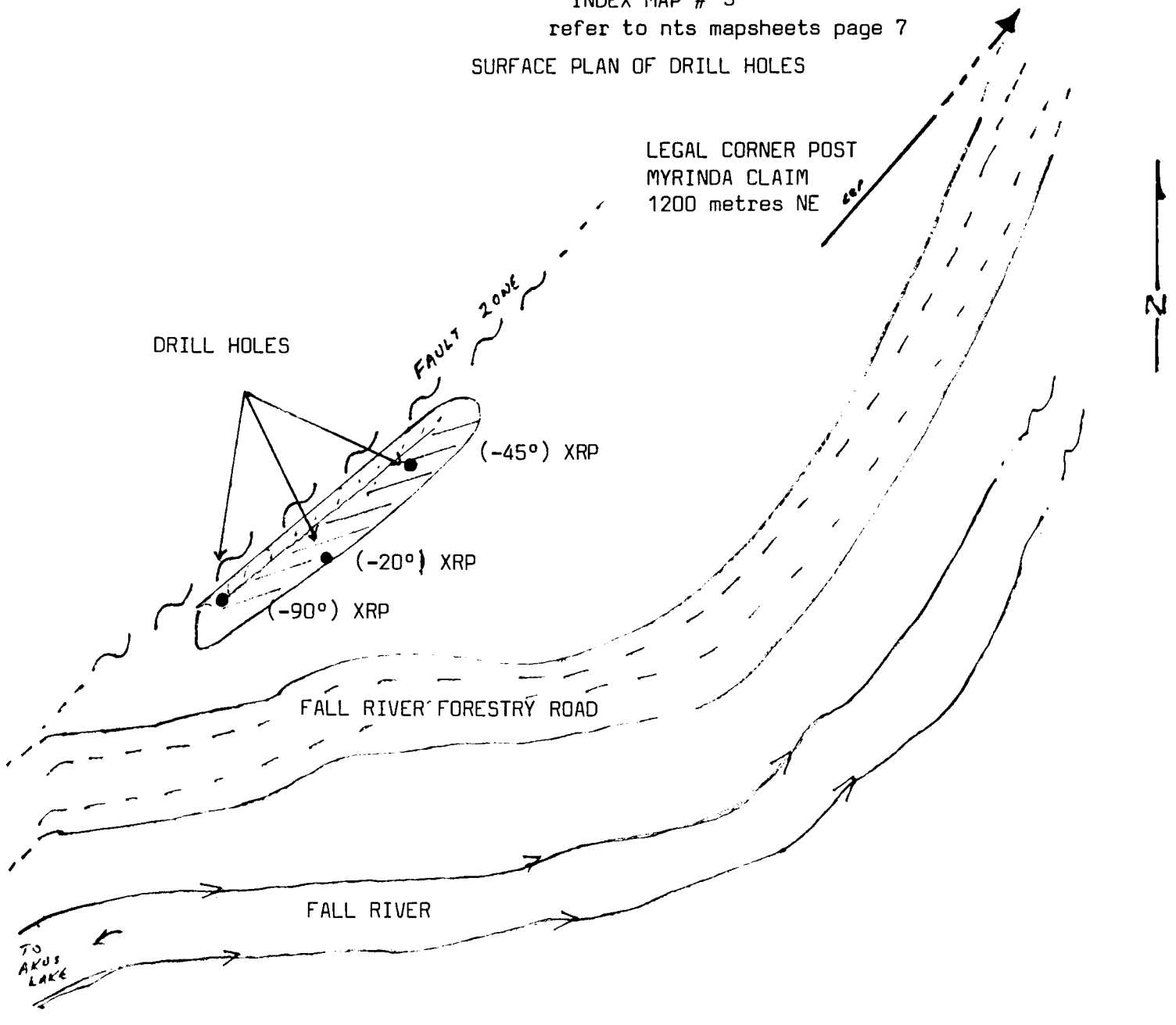


INDEX MAP # 4

LOCATION OF DRILL SITE ON
MYRINDA CLAIM



INDEX MAP # 5
refer to nts mapsheets page 7
SURFACE PLAN OF DRILL HOLES



SCALE: 1 cm = 4 metres

0 4 M