

86-739-15394
9/87

GEOCHEMICAL ASSESSMENT REPORT

on the

GOLD STAR CLAIM

WHITEMAN CREEK

VERNON MINING DIVISION, B.C.

NTS: 82L/4E
Latitude: 50°14' North
Longitude: 119°41' West
Owner: Brican Resources Ltd.
Murray S. Morrison
Consultant: Discovery Consultants
Author: B.W. Kyba
Date: December 2, 1986

Operator: Brican Res. Ltd.

**GEOLOGICAL BRANCH
ASSESSMENT REPORT**

FILMED

15,394

TABLE OF CONTENTS

SUMMARY	Page 1
LOCATION, ACCESS, TOPOGRAPHY	Page 2
PROPERTY	Page 3
HISTORY	Page 3
GENERAL GEOLOGY	Page 5
WORK PROGRAMME	Page 6
Grid Establishment	Page 6
Soil Survey	Page 6
DISCUSSION AND CONCLUSIONS	Page 8
RECOMMENDATIONS	Page 9
REFERENCES	Page 10
STATEMENT OF COSTS	Page 11
STATEMENT OF QUALIFICATIONS	Page 12

LIST OF ILLUSTRATIONS

LOCATION MAP		Following Page 2
CLAIM MAP	1:50,000 scale	Following Page 3
ARSENIC IN SOILS	1:5,000 scale	In pocket
GOLD IN SOILS	1:5,000 scale	In pocket

SUMMARY

Brican Resources Ltd. holds an option to purchase the GOLD STAR claim west of Vernon, B.C. This property was staked in the autumn of 1983

Brican carried out a geochemical evaluation of the gold potential in 1984 and a more detailed geochemical evaluation in 1986.

A total of 566 soil samples was collected from 1.8 km of cut picket line and 27.3 km of flaggd line. All samples were analysed for arsenic and 210 were analysed for gold.

The results of the geochemical surveys indicate the presence of five areas on the GOLD STAR property exhibiting anomalous gold values. Further exploration of these target areas is recommended.

A total of \$13,281.90 was expended on the 1986 programme.

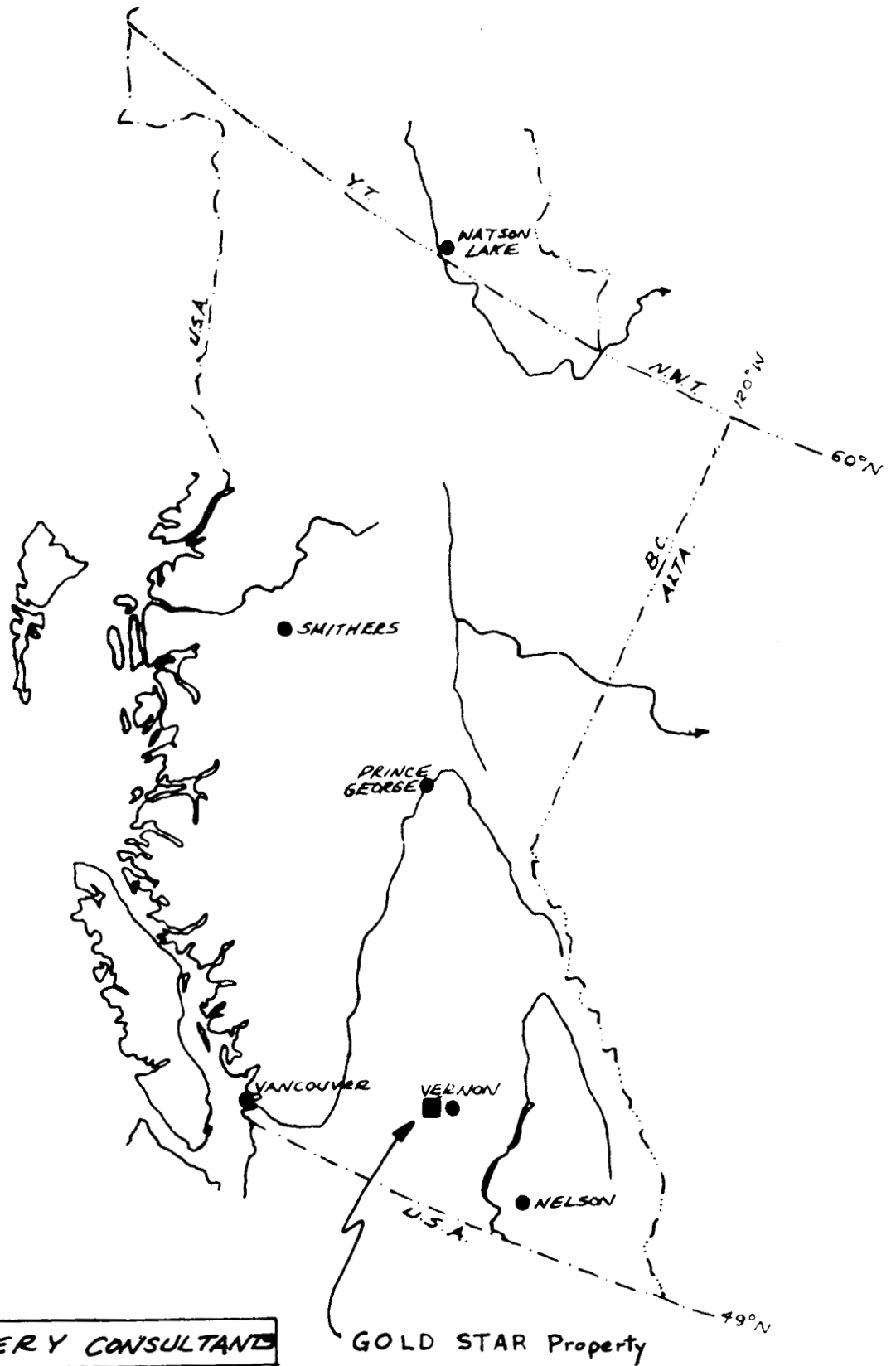
LOCATION, ACCESS, TOPOGRAPHY

The GOLD STAR property is at the head of the canyon on Whiteman Creek, a major eastward-flowing tributary of Okanagan Lake in the Vernon area of south-central British Columbia (Figure 1). The GOLD STAR claim is located mainly on the north side of the creek at the point where five tributaries join to form the main creek. Hudson Bay Creek joins Whiteman Creek near the southwest corner of the claim. The Legal Corner Post is on the south side of Whiteman Creek, 20 metres north of Whiteman Main logging road at an elevation of 1040 m (3400 ft), and 1300 m west of the third (upper) bridge.

The centre of the claim is at latitude $50^{\circ}14'$ north and $119^{\circ}41'$ west. The UTM references are from 30780 to 30970 east and from 556700 to 556940 north.

Access to the property is gained by driving south for 19 km on the Westside Road, from the junction with Highway 97, to the junction of the Whiteman Creek road, thence west for 20 km on this logging road to the third bridge over Whiteman Creek. At this point an old logging road follows the north side of the creek for 1.5 km to the east boundary of the claim. The nearest major centre is Vernon, 29 km east of the GOLD STAR property.

The property is on the steep south-facing wall of Whiteman Creek canyon. Elevations vary from 1040 metres (3400 ft) above sea level at the Legal Corner Post (SE corner) to 1550 m a.s.l. (5100 ft) at the northeast corner. The canyon walls are steep below 1400 m a.s.l. (4600 ft) but slopes are more gentle above this elevation.



DISCOVERY CONSULTANTS

BRICAN RESOURCES LTD.

LOCATION MAP
GOLD STAR Property

NOV./86

FIG. NO. 1

PROPERTY

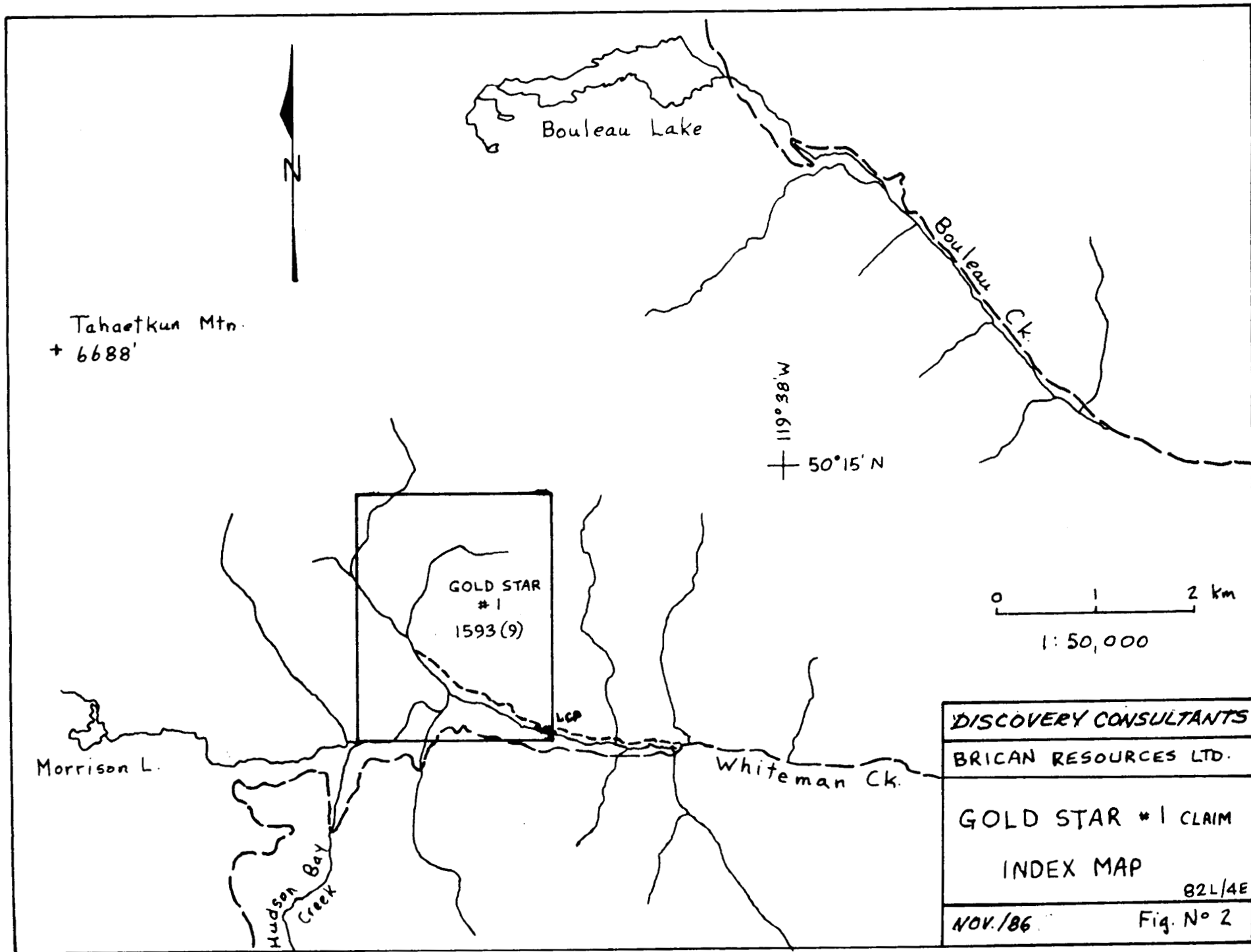
The property consists of a single 20-unit claim, the GOLD STAR #1, Record Number 1593 in the Vernon Mining Division. The claim was staked by Murray S. Morrison on September 1-3, 1983 and recorded on September 8, 1983.

Brican Resources Ltd. holds an option to purchase the claim, and this company is the owner of record at the time of writing of this report.

HISTORY

The earliest record of mining activity in the Whiteman Creek area is in 1898, when the Annual Report of the Minister of Mines refers to exploration on the KLONDYKE gold showings 3 miles west of Okanagan Lake on "White Man's Creek." Several unsuccessful attempts were made to mine placer gold on the creek between 1915 and 1954. The only recorded production was in the late 1930's when 3 ounces were reported.

Alf Brewer of Vernon discovered gold in 1939 on what is now the BRETT property, immediately east of the GOLD STAR property. This property is now held by Huntington Resources Ltd. who, in 1985 and 1986, carried out an extensive exploration programme of trenching and diamond drilling (Gruenwald, W., 1985; Belik, G.D., 1986).



From the 1960's to the present, various companies, including Noranda, Cominco, Canadian Occidental Petroleum, Kennco, Amax and others, have conducted extensive exploration programmes in the Whiteman Creek area for molybdenum, copper, uranium and gold (see REFERENCES).

In 1984, Brican Resources Ltd. carried out a reconnaissance geochemical survey on the GOLD STAR claim (K.L. Daughtry, 1984) that outlined two areas of anomalous gold values.

GENERAL GEOLOGY

The general geology of the Whiteman Creek area is shown on Preliminary Map by B.N. Church, 1980 (see REFERENCES).

A Triassic granitic pluton (predominantly quartz monzonite) intrudes sedimentary and volcanic rocks of Paleozoic and Triassic age. This pluton is in turn intruded by an Eocene syenite to monzonite plug which is well exposed in the canyon east of the GOLD STAR property.

Most of the area surrounding Whiteman Creek is underlain by a thick sequence of Eocene andesite, dacite and rhyolite overlying a basal clastic sedimentary unit. Interflow tuff units are present in the volcanic sequence. The Eocene alkaline plug is thought to be the intrusive equivalent of lavas in the upper part of the sequence.

Miocene plateau lava flows are the youngest rocks in the area and occur in scattered remnants near ridge crests.

The GOLD STAR claim is underlain by altered Triassic quartz monzonite, which intrudes older volcanic and sedimentary rocks, and which is in fault contact with altered and pyritic andesitic agglomerate, rhyolite and tuff from the lower part of the Eocene volcanic sequence. The volcanics on the property are generally flat lying.

WORK PROGRAMME

Brican Resources Ltd. initiated a detailed geochemical evaluation of the GOLD STAR property in August of 1986.

Previous heavy mineral, soil, silt and rock sampling indicated two areas of anomalous gold values. The current programme was designed to define the possible source of the anomalous gold values.

- The work consisted of:
- 1). establishing a cut and picketed base line and tie line.
 - 2). laying out an extensive grid of flagged lines and
 - 3). collecting soil samples over the entire grid.

Grid establishment

A cut and picketed baseline and tieline totalling 1.8 km (Figure 3, 4) were used for control in laying out 27.3 km of cross flagged line. The flagged lines were 50 m apart with marked stations every 25 m.

Soil Survey

Soil samples were collected on the flagged crosslines, 50 m apart, and at 50 m intervals along the lines (Figure 3, 4). A total of 566 samples was collected.

Samples were collected from the B horizon in numbered wet strength kraft paper bags and submitted to Bondar-Clegg and Company Ltd. in Vancouver, B.C. for standard geochemical analysis for arsenic and gold. Arsenic analysis was by nitric perchloric digestion and colourmetric analysis. Gold analysis was by fire assay preparation and atomic absorption determination.

All 566 samples were analysed for arsenic and 210 samples were analysed for gold. Analytical values for arsenic were plotted on Figure 3. Analytical values for gold were plotted on Figure 4.

Threshold values for arsenic and gold in soils were determined from standard histogram plots.

Threshold values for arsenic were:

0 - 3 ppm As	-	negative
4 - 12 ppm As	-	positive
>12 ppm As	-	anomalous

Threshold values for gold were:

0 - 9 ppb Au	-	negative
10 - 25 ppb Au	-	positive
>25 ppb Au	-	anomalous

Contours at 4 and 12 ppm arsenic were plotted on Figure 3. Contours at 10 and 25 ppb gold were plotted on Figure 4.

DISCUSSION AND CONCLUSION

The geochemical surveys conducted by Brican Resources Ltd. on the GOLD STAR property in 1986 have indicated the existence of five areas in which anomalous gold values occur in soils.

The eastern target area is on the steep south-facing slope above Whiteman Creek immediately west of the eastern boundary of the GOLD STAR #1 claim. Steep linear gulleys in this area suggest the presence of a north-trending zone of faulting.

Four targets are outlined on the western part of the property. The northern-most target at 13+00 N/6+00 W is also in an area of steep linear gulleys and may be the expression of a north-trending fault zone. The three other target areas lie along the 4050 feet (1230 m) contour from 12+50 N/11+00 W to 11+00 N/4+00 W. This broad area of anomalous gold values may reflect the presence of a flat lying mineralized interflow tuff.

RECOMMENDATIONS

Further detailed exploration of the five target areas is warranted. A programme of geological mapping, fill-in soil sampling, detailed rock sampling and trenching is recommended.

Respectfully submitted

Baukyba
B.W. Kyba

Vernon, B.C.

December 4, 1986.

REFERENCES

- | | | |
|--------------------------------|------|---|
| Belik, G.D. | 1986 | Report on the Brett Claims, private report to Huntington Resources Inc. |
| Church, B.N. | 1980 | Revised Preliminary Map 37 British Columbia Ministry of Energy, Mines and Petroleum Resources |
| Daughtry, K.L. | 1984 | Assessment Report (Geochemical & Prospecting) on the Gold Star. |
| Dawson, James M. | 1983 | Report on Brett Claims for Huntington Resources Inc. |
| Fipke, C.E. | 1983 | Report on Heavy Mineral Sampling on Brett Claims for Huntington Resources Inc. |
| Gruenwald, W. | 1984 | Geological & Geochemical Report on the Brett Claims, Vernon M.D. B.C. for Huntington Resources Inc. |
| Gruenwald, W. | 1985 | Summary on the Brett Claims, private report to Huntington Resources Inc. |
| Macdonald, Colin C. | 1975 | Geology and Geochemistry Report on Whit Claims for Canadian Occidental Petroleum Ltd. Assessment Report No. 5692 |
| Macdonald, Colin C. | 1977 | Geology and Geochemistry Report on Whit Claim for Canadian Occidental Petroleum Ltd. |
| Mehner, D.T. | 1981 | Assessment Report on Soil and Rock Geochemistry Survey and Geological Mapping on Lock Claims |
| Osatenko, M.J. | 1980 | Assessment Report Geology and Soil Geochemistry on Loch Claims |
| Stevenson, R.W. | 1978 | Silt, Soil & Rock Geochemical Investigations on Whiteman No. 1 Group, Vernon Mining Division |
| Wilmont, A.D. | 1983 | Report on The Brett No 1 and 2 mineral claims for C. Brett |
| Woodcock, J.R. | 1979 | Geology, Geochemistry, Geophysics Report on Whiteman claims for Essex Minerals Company Assessment Report No. 7397 |
| Woodcock, J.R.
Gorc, Dennis | 1980 | Whiteman Creek Drill Project for Essex Minerals Co. Assessment Report No. 8146 |

STATEMENT OF COSTS

Professional Services

W.R. Gilmour

Field Supervision August 14, 15, 1986

plus data compilation

5 days @ \$250/diem \$ 1250.00

K.L. Daughtry

Supervision, Data compilation

3 days @ \$300/diem 900.00

B. Kyba

Report writing

2 days @ \$225/diem 450.00 \$2300.00

Contract Labour

Grid installation and soil sampling

Jesmex Developments Ltd. Aug 14, 15

2 days @ \$180/day 360.00

J. Osterhagen Aug 20-22, 25-29

and data compilation 10 days @ \$155/day 1550.00

F. Lishman Aug 20-22, 25-29

8 days @ \$120/day 960.00

R. Anctil Aug 20-22, 25-29

8 days @ \$120/day 960.00

S. Maltby Aug 20-22, 25-29

8 days @ \$120/day 960.00 4790.00

Analysis

566 As @\$3.75 1211.50

566 Sample prep @ \$.90 509.40

210 Au @ \$8.00 1680.00 4311.90

Field supplies 300.00

Secretarial, printing, etc. 500.00

Total

\$13281.90

STATEMENT OF QUALIFICATIONS

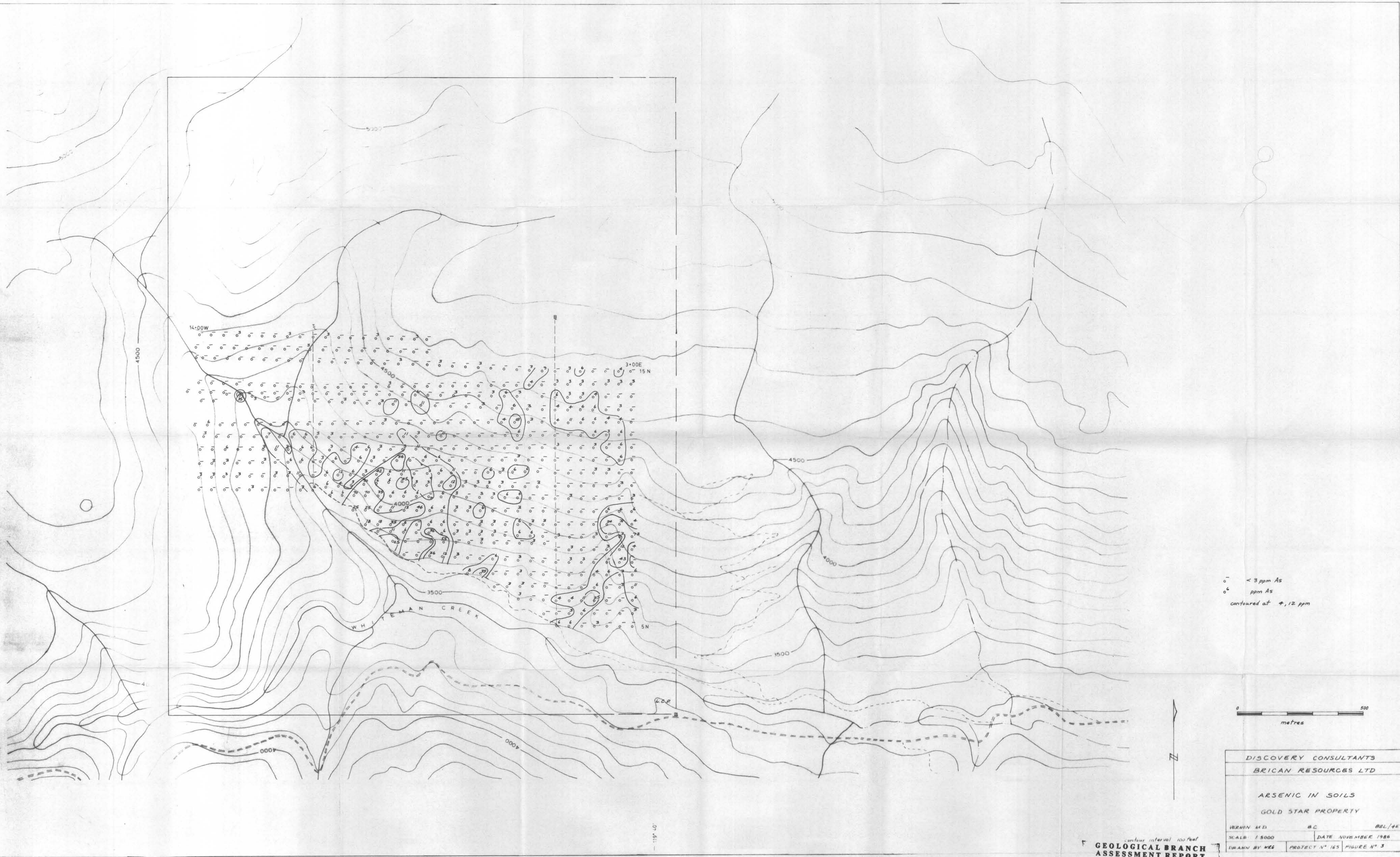
I, B.W. KYBA of R.R.1, Falkland, B.C., DO HEREBY CERTIFY THAT:

1. I am a Consulting Geologist in the mineral exploration business and am employed by Cedar Hill Gold Corporation, Falkland, B.C.
2. I have been practising my profession in British Columbia, Alberta, Saskatchewan, the Yukon Territory, Colorado and Nevada for 15 years.
3. I am a graduate of the University of Alberta with a Bachelor of Science degree in geology.
4. I am a Fellow of the Geological Association of Canada, a Professional Geologist of Alberta, and a member of the Canadian Institute of Mining and Metallurgy.
5. This report is based upon knowledge of the GOLDSTAR property gained from exploration work on the property.


B.W. Kyba

Vernon, B.C.

December 2, 1986



○ <math>< 3 \text{ ppm As}</math>
 ○ ppm As
 contoured at 12 ppm

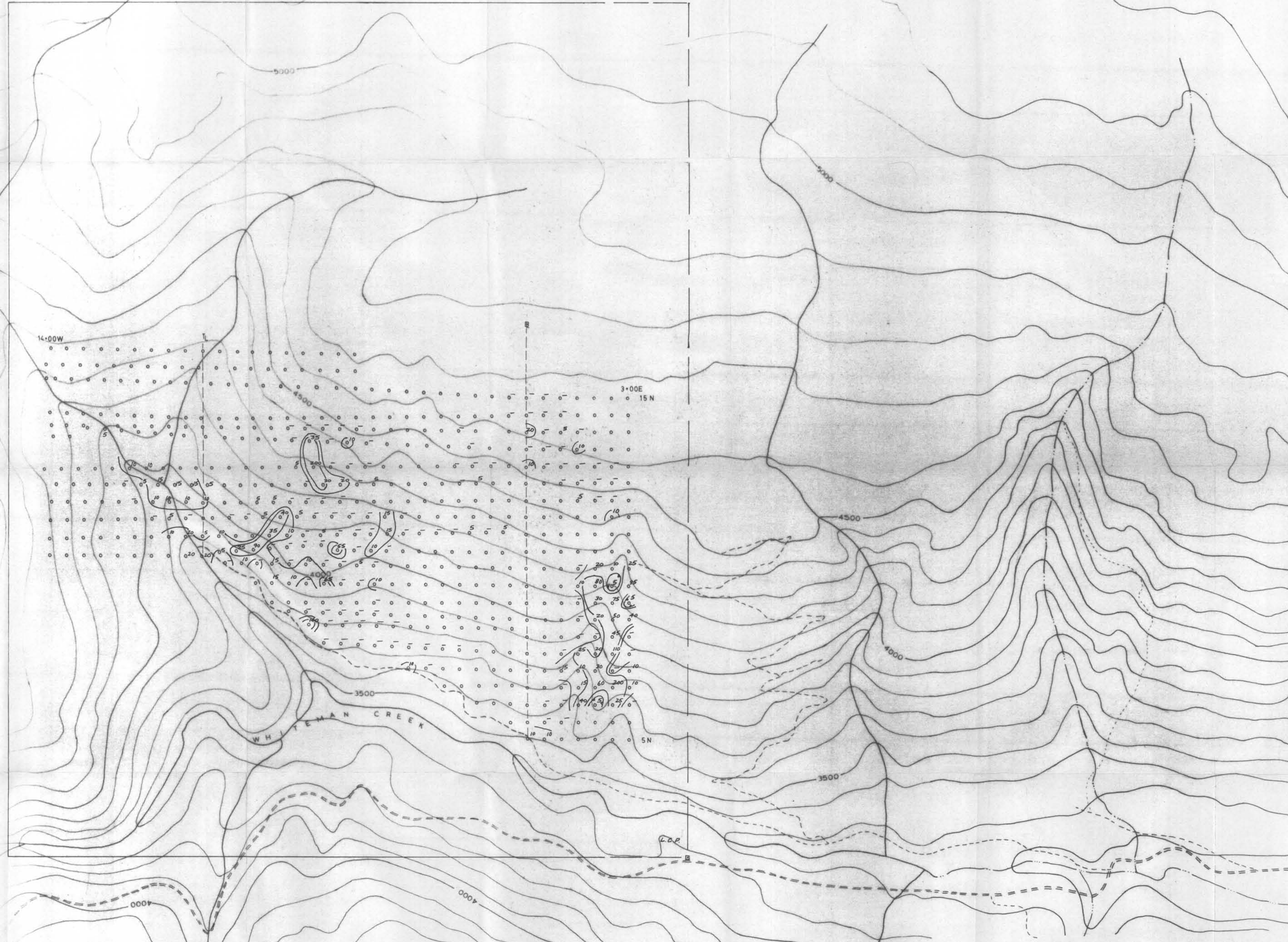


DISCOVERY CONSULTANTS		
BRICAN RESOURCES LTD		
ARSENIC IN SOILS		
GOLD STAR PROPERTY		
VERSION 4121	BC	02L/45
SCALE: 1:5000	DATE: NOVEMBER 1986	
DRAWN BY: WEG	PROJECT N°: 165	FIGURE N°: 3

contour interval 100 feet
GEOLOGICAL BRANCH
ASSESSMENT REPORT

15,394

50' 15"



10 ppb Au
 5- ppb Au
 0 no Au analysis
 contoured at 10, 25 ppb

GEOLOGICAL BRANCH
 ASSESSMENT REPORT

15,394
 metres



DISCOVERY CONSULTANTS		
BRICAN RESOURCES LTD		
GOLD IN SOILS		
GOLD STAR PROPERTY		
VERNON M.D.	B.C.	BEL/46
SCALE: 1:5000	DATE: NOVEMBER 1986	
DRAWN BY: WEG	PROJECT N°: 165	FIGURE N°: 4

contour interval 100 feet

119° 40'