

86-682 - 15400

MAGNETOMETER & GEOCHEMICAL REPORT
ON

ZUMAR NO. 2 & 4 M.Cs. 10/87

VERNON MINING DIVISION

N.T.S. 82L/4E

50° ~~00~~^{01'} NORTH LATITUDE

119° ~~40~~^{38.5'} WEST LONGITUDE

FOR

Owner/Operator: SKYWORLD RESOURCES & DEVELOPMENT LTD.

385 YATES ROAD

KELOWNA, B.C.

BY

A.D. WILMOT, P. ENG.

FILMED

KELOWNA, B.C.

NOVEMBER 2, 1986

GEOLOGICAL BRANCH
ASSESSMENT REPORT

RECORDED

NOV 18/86

Rect No. 2A

VERNON
MINING DIVISION

15,400

TABLE OF CONTENTS

	PAGE
INTRODUCTION	1
SUMMARY & CONCLUSIONS	1
PROPERTY & OWNERSHIP	2
LOCATION & ACCESS	2
PHYSIOGRAPHY	2
HISTORY	2
GENERAL GEOLOGY	3
MINERALIZATION	3
MAGNETOMETER SURVEY	
(I) INSTRUMENT	4
(II) FIELD PROCEDURE	4
(III) INTERPRETATION OF RESULTS	4
GEOCHEMICAL SURVEY	
(I) FIELD PROCEDURE	4
(II) SOIL	5
(III) METHOD OF GEOCHEMICAL ANALYSIS	5
(IV) INTERPRETATION OF RESULTS	5 & 6
CONCLUSIONS & RECOMMENDATIONS	6
STATEMENT OF EXPENDITURES	7
CERTIFICATE	8
APPENDIX	
GRAPHIC REPRESENTATION OF GEOCHEMICAL DATA	
LOCATION MAP	Plate 1
CLAIM MAP	Plate 2
MAPS IN FOLDER:	
TOPOGRAPHIC MAP	Plate 3
MAGNETIC SURVEY	Plate 4
GEOCHEMICAL SOIL SURVEY FOR COPPER & SILVER	Plate 5

INTRODUCTION

At the request of Skyworld Exploration and Development Co. Ltd. the writer arranged with Amex Exploration Services Ltd. of Kamloops, B.C. to conduct a Magnetometer and Geochemical Survey over Mineral Claims Zumar No. 2 and 4, consisting of 28 units.

The object of the survey was to define potentially favourable areas as possible drill targets.

SUMMARY & CONCLUSIONS

(a) Magnetometer Survey

The Magnetometer readings over the area are generally of low profile, having a background reading of 57,000 gammas. A northwest trending high, ranging from 59 to 61,000 gammas, extends from the east end of the Zumar vein at line 5+00 E to line 3+00 W. The significance of this anomaly is not known but it may indicate a fault or sheared zone with a higher than normal concentration of magnetite.

(b) Geochemical Survey

1476 soil samples were taken at 50m. intervals on a 100 m. line spacing and assayed for copper and silver. Background readings over the area were 13 PPM for copper and 0.02 PPM for silver. The most significant superimposed anomalies for copper in excess of 50 PPM & silver in excess of 0.6 PPM are three in number and are located at the west end of the Zumar Vein at line 3+00E, between lines 4 and 5+00 West at 0+50 S and between lines 10 and 12+00 E from 7+00 South to 8+50 South. While these anomalies are relatively weak, they could indicate the presence of mineralized quartz veins, similar to the Zumar Vein.

Further fill-in sampling of these three anomalies should precede further exploration by trenching or drilling.

PROPERTY & OWNERSHIP

The property, previous to some recent staking, consisted of the following Mineral Claims all owned by Skyworld Resources & Development of 385 Yates Road, Kelowna, B.C.

CLAIM NAME	NO. OF UNITS	RECORD NO.	STANDING
ZUMAR 2	20	711	OCTOBER 9, 1988
ZUMAR 3	20	2090	MAY 2, 1989
ZUMAR 4	8	2026	NOVEMBER 1, 1988
ZUMAR 5	12	2027	NOVEMBER 1, 1988
ZUMAR GOLD	8	2157	OCTOBER 3, 1989

LOCATION & ACCESS

The property is located at 50-00 North Latitude and 119-43 West Longitude, on the west side of Okanagan Lake 30 km. by road from Kelowna. From the Westside Road access is by Bear Creek logging road for 15.5 km and then by Big Horn Creek branch road for another 4 km.

PHYSIOGRAPHY & VEGETATION

The property lies between 980 and 1200 m. elevation in gently rolling country that is typical of the Interior Plateau. Most of the claim area has been logged with only scattered groves of pine, fir and aspen remaining. The closest source of water is from a creek crossing the Bear Creek Road, 6 km from the workings.

HISTORY

Zumar 2, wherein lies the Zumar Vein, was staked in 1979 and has been held in good standing since. In 1979 1000 feet of NQ wireline drilling was done on the Zumar Vein and in 1980 60.8 tons of hand sorted ore were mined from an open cut on the vein and shipped to the Trail Smelter. A net return of \$5,417.00 was received from this shipment.

GENERAL GEOLOGY

Zumar 3 and the northern part of Zumar 2, where the workings are located, is underlain by tertiary volcanics of the Kamloops Group, which locally is a black, medium grained basalt. Fractures are often coated with hematite and the outcrop weathers to a shade of brown or rusty red. Some of the flows are amygdaloidal and all have been highly fractured and subjected to some degree of granitic alteration.

The southern part of Zumar 2 is underlain by Palaeozoic sediments and andesite of the Cache Creek Group. The contact of this formation lies half a kilometer south of the Zumar showing.

The nearest igneous intrusives, which are members of the Coast Range Batholith, outcrop 6 km north and west of the Zumar Claims.

MINERALIZATION

Gold and silver, the two minerals of economic interest, occur in a quartz fissure vein that has been exposed by stripping and trenching over a strike length of 230 m. of which 45 m. was explored by diamond drilling to a depth of 30 m. The vein which averages some 30 cm. in width, strikes 100° true and dips 70 to 80° south.

The vein is not heavily mineralized but carries 2 or 3 percent of scattered pyrite with lesser chalcopyrite, which on the outcrop has partly oxidized to malachite and azurite. Native gold has also been observed.

Hematite which occurs in the basaltic host rock has coated fractures in the vein, giving the quartz a reddish tinge. The bands of finely disseminated indigenous pyrite are common in the basalt.

MAGNETOMETER SURVEY

(1) Instrument

Measuring total field

The instrument used for the survey was a Scintrex portable Proton Precision Magnetometer. The sensitivity was 1 gamma and the range 20,000 to 100,000 gammas.

(II) Field Procedure

Magnetometer readings were taken at 50 m. intervals over 75 km. of grid lines, which required 12 man days of field work.

Magnetometer readings were taken after starting from a B/L station. A loop was made down a grid line from this station and a return up to the same station on the next grid line over, where a correction was made for diurnal variation.

(III) Interpretation of Results

The results of this survey are plotted on Plate 4, in the attached folder, at a scale of 1:5000. The area is one of low magnetic profile having a background of 57,000 gammas, a low of 55,000 and a high of 61,000 gammas. A northwest trending anomaly, ranging from 59,000 to 61,000 gammas extends from the Zumar Vein on line 5+00E and 2+50South to line 3+00W and 2+00 North. The significance of this is not known but it may represent a fault or shear zone with a higher than normal magnetic content. Other northwest trending anomalies of the same magnitude occur in the northern half of M.C. Zumar 4.

GEOCHEMICAL SURVEY

(I) Field Procedure

Soil samples were taken at 50 m. intervals with a Mattock from the "B" horizon at a depth of about 20 cm. The average weight of all the samples taken was three-quarters of a pound. The samples were placed in heavy duty kraft envelopes and dried before shipment to the assay office.

(II) Soil

The soil is largely glacial drift with some residual soils in areas of light overburden. The "B" horizon is located from 10 cm. to a meter below the surface and is generally light grey to light buff in colour.

(III) Method of Geochemical Analysis

Samples are further dried in a geochemical drying oven and then screened through a 80 mesh sieve. The minus fraction is reserved for the analysis, as follows:

Weigh 1 gm. of sample into test tube. Add 0.5 ml. of nitric acid. Place in hot water bath for 30 minutes. Add 1.5 ml. of hydrochloric acid and leave in hot water bath for a further 90 minutes. Bulk to 10 ml. with distilled water. Mix thoroughly and read on A.A.

(IV) Interpretation of Results

The geochemical results of the survey were plotted on a map and contoured above the threshold values. The background and threshold values are calculated by a simplified statistic approach. The method of constructing the graphs is patterned after Claude Lepeltier's method, and is described below:

1. Select a precise set of geochemical data.
2. Group the values in classes.
3. Calculate the frequency of occurrence in each class.
4. Calculate the cumulated frequencies of each class.
5. Plot the cumulative frequencies of each class in percent against the lower limits of each class on log probability paper.
6. Read background at 50%; threshold at 2.5% or at breaks in the graph.

By this method the background and threshold values for copper and silver were plotted on graphs and are included in the appendix of this report.

N.B. Minimum Threshold - "B" horizon soil
Maximum Threshold - "A" horizon soil

The survey covered an area of low geochemical background for copper 24 PPM and silver at 0.2 PPM. Thus it appears that the anomalous readings obtained, originated from relatively small mineralized bodies such as the known quartz veins that have been explored on M.C. Zumar 2.

A low profile copper anomaly, ranging between 24 - 49 PPM, extends northwesterly for a distance of 2600 meters from the southeast corner of M.C. Zumar 4. Within this anomaly, which encloses the known mineralized veins on M.C. Zumar 2, are two areas of particular interest described as follows:

(a) This anomaly is a superimposed copper-silver anomaly that ranges from 50 to 112 PPM copper and from 0.6 to 1.1 PPM silver.

It is located between lines 11+00 East to 13+00 East from 6+50 South to 8+50 South.

(b) This second anomaly is a copper anomaly that ranges between 50 and 88 PPM. It lies on strike with the Zumar vein, 400 meters to the northwest, and extends from line 1+00 West to line 6+00 West between the baseline and 1+50 South.

Superimposed on this anomaly is a silver anomaly of 0.6 PPM, that lies between the baseline and 1+00 South.

CONCLUSIONS & RECOMMENDATIONS

The two Geochemical anomalies previously described should be further defined by soil sampling at 25 meter centres.

The geology of the area between the Zumar Vein and line 6+00 West and the southeastern anomaly should be mapped as this information could be an important factor in assessing the geochemical and magnetic results.

Dependant on the results of this work, further exploration of the anomalies by diamond drilling is a probability.

A cost estimate for the proposed follow-up work is as follows:

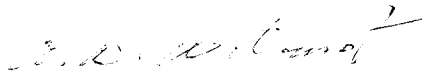
Geologist 4 days @ \$250.00	\$1,000.00
Fill-in soil sampling (including 6 days @\$200.00 Board, Room & Transportation)	1,200.00
Assaying 500 samples @ \$3.00	1,500.00
Report	800.00
Contingency 10%	450.00
	<hr/>
	\$4,950.00
	<hr/>

STATEMENT OF EXPENDITURES

Amex Exploration Services Ltd.	\$ 16,689.28
Kamloops Research and Assay Laboratory Ltd.	4,560.60
Supervision, Engineering & Report	3,000.00
	<hr/>
	\$ 24,249.88
	<hr/>

(See appended statements)

Respectfully Submitted



A.D. Wilmot, P. Eng.

Oct. 18, 1986

Skyworld Resources and Development Ltd.
385 - Yates Street,
Kelowna, B.C., V1Y 7P9

Attention: Mr. Alex Guidi

Statement of Account

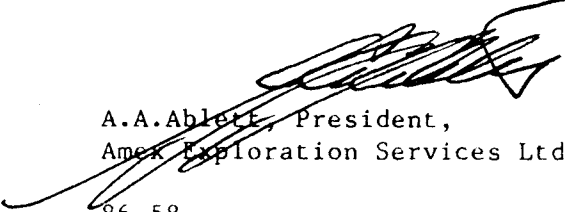
Re: Grid preparation and soil survey, Zumar 2 and 4 mineral claims. Lambly Creek Area, Kelowna, B.C., Vernon mining division. This work completed during the period September 14 to October 11, 1986.

Amex Fees

Grid preparation and soil collections	
75.5 km @ 168.30/km	= \$12,706.65
(Includes collection of 1476 soils,)
(Soil bags, tyvek stationing, flagging,)
(Wages, vehicles, gas, board, accomodation,)
(HP, UIC, CPP, WC, Insurances, profit, field equipment,))
(and miscellaneous supplies.)

Total Requested = \$12,706.65

Respectfully Submitted,


A.A. Ablett, President,
Amex Exploration Services Ltd.

86-58

AA/aa

135

Oct. 18, 1986

Skyworld Resources and Development Ltd.
385 - Yates Street,
Kelowna, B.C., V1Y 7P9

Attention: Mr. Alex Guidi

Statement of Account

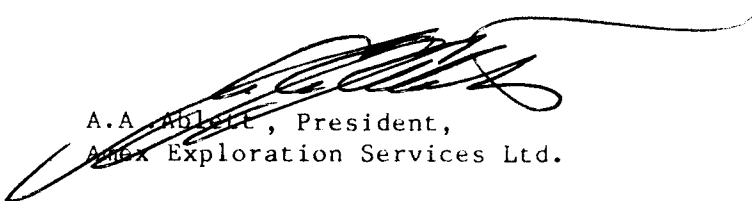
Re: Magnetometer survey (proton scintrex) on Zumar 2 and 4,
Lambly Creek area, Kelowna, B.C., Vernon Mining Division.
This work was completed during the period Sept. 24 to
Oct. 12, 1986.

Amex Fees

Magnetometer survey
75.5 km @ \$52.75/km = \$3,982.63
(Includes, wages, board,)
(Accommodation, WC, CPP, UIC,)
(HP, insurances, vehicle,)
(mag repair, profit, etc.)

Total Requested =\$3,982.63

Respectfully Submitted,


A.A. Ablett, President,
AMEX Exploration Services Ltd.

86-67

AA/aa

**KAMLOOPS
RESEARCH & ASSAY
LABORATORY LTD.**

C.O. CERTIFIED ASSAYERS

912 - 1 LAVAL CRESCENT - KAMLOOPS, B.C.
V2C 8P5
PHONE: (604) 372-2784 --- TELEEX: 048-8320

Skyworld Resources & Developments Ltd.
Box 68,
Kelowna, B.C.
V1Y 7N8

INVOICE: 86-0426
DATE: October 20, 1986.
FILE No. G 1530

1,476 Soil samples for geochem Cu, Ag	@ \$ 3.00	\$ 4,428.00
15 Rock Samples for geochem Au, Ag	@ 8.84	132.60
		<u>4,560.60</u>
		<u>\$ 4,560.60</u>

CERTIFICATE

I, Ashley D. Wilmot, of Kelowna, B.C.

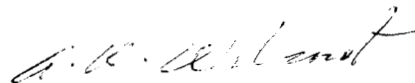
certify that

I graduated from Queen's University in 1936,
with a Bachelor of Science Degree in Mining
Engineering.

I am a life member of the B.C. Professional
Engineers, The Canadian Institute of Mining
& Metallurgy and the B.C. & Yukon Chamber of
Mines.

I am the author of this report and I supervised
the work therein described.

I have no direct or indirect interest in the
property discussed in this report, nor do I
expect to receive any.

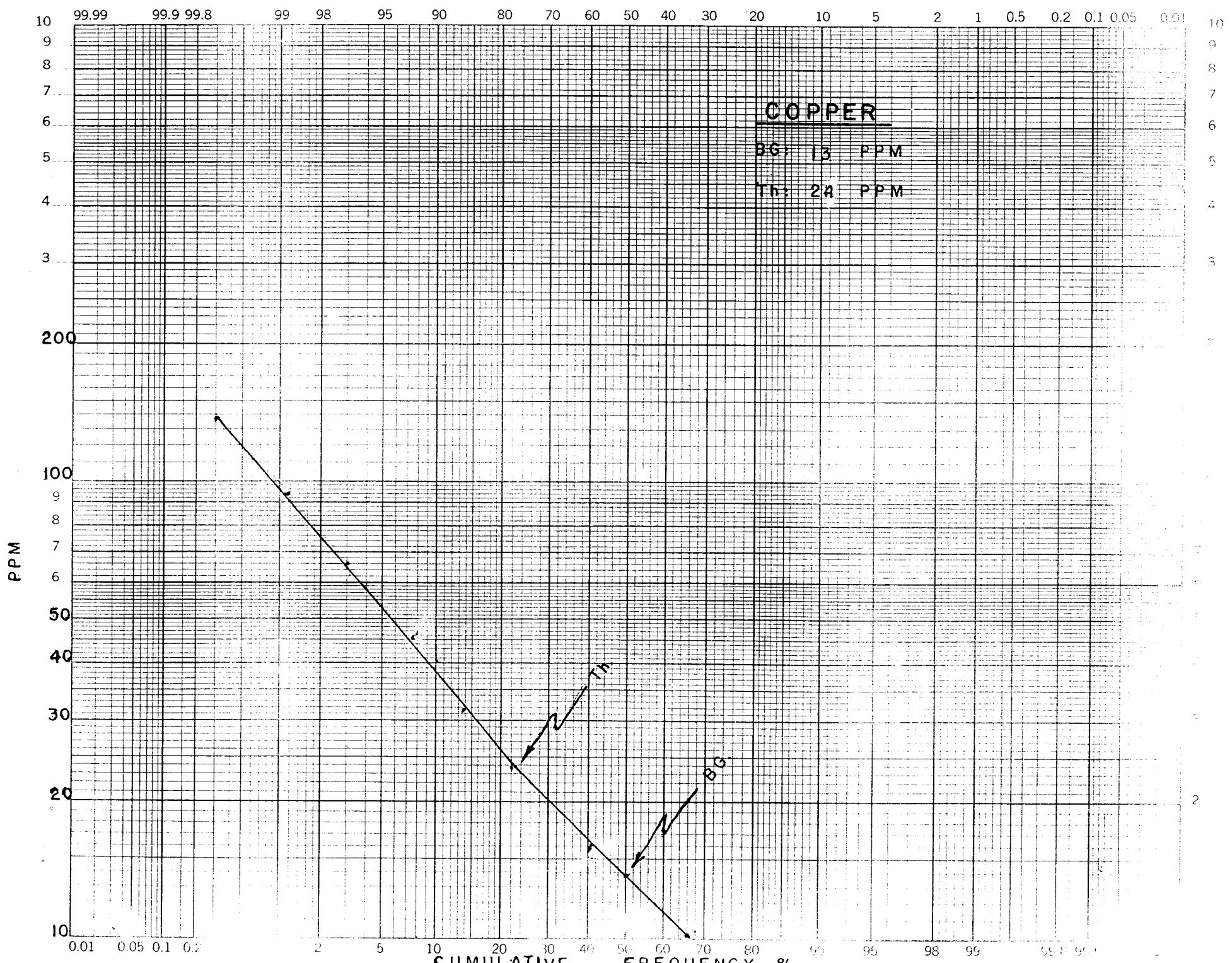


Kelowna, B.C.
October 30, 1986

A.D. Wilmot, P. Eng.

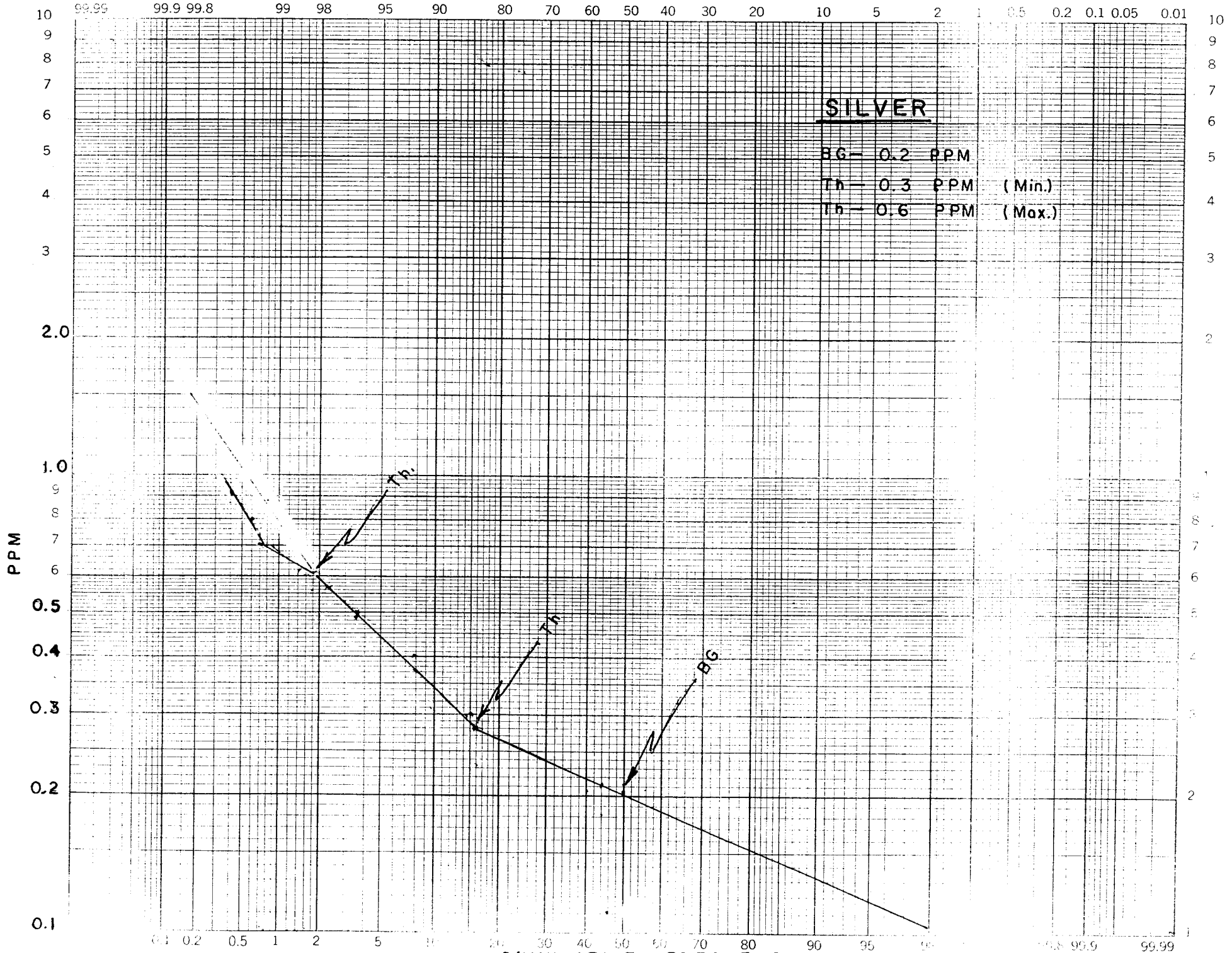
CUMULATIVE FREQUENCY PLOT FOR COPPER

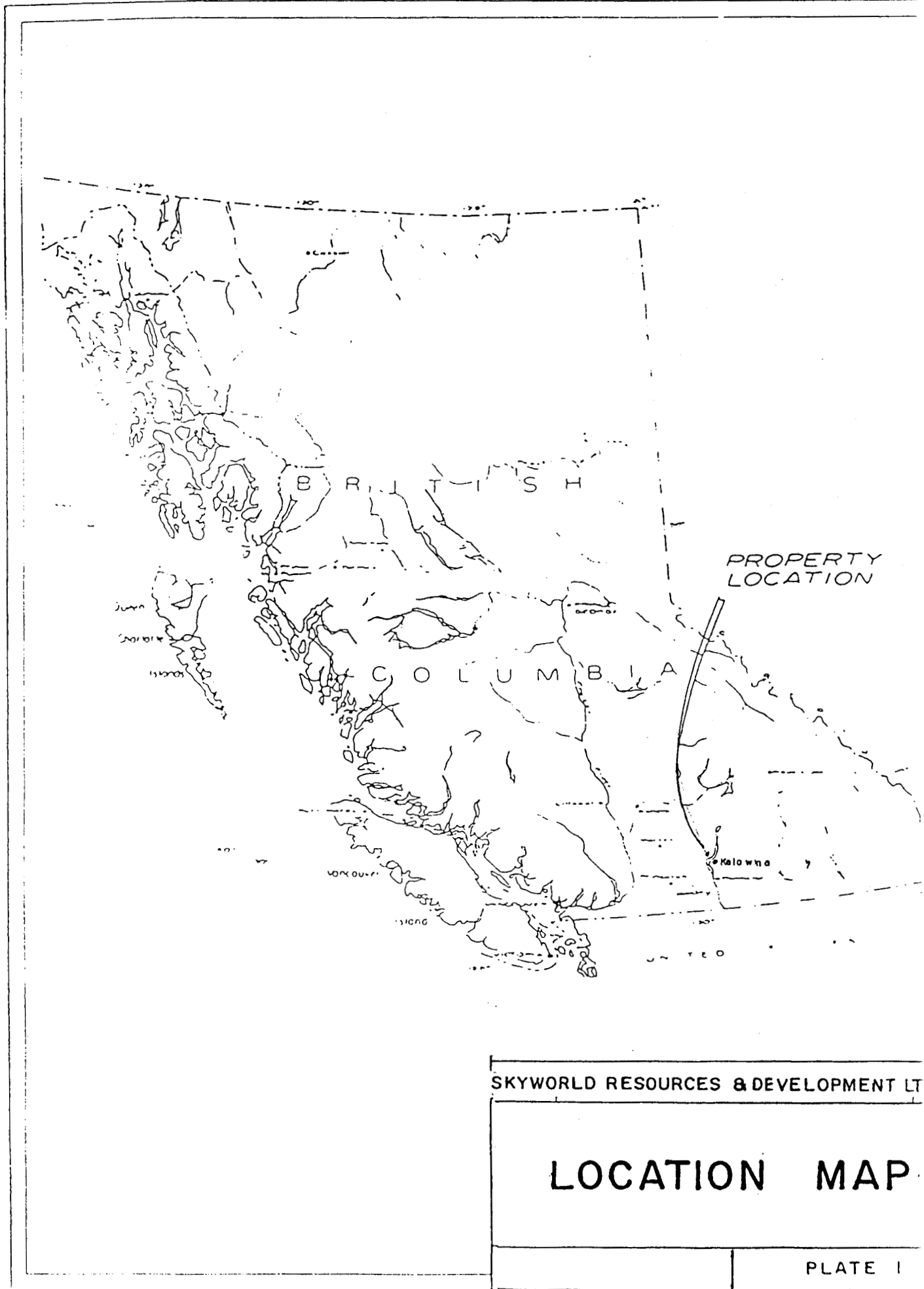
CLASS	FREQUENCY	% FREQUENCY	CUMULATIVE FREQUENCY %
0.10 - 0.14	5	0.3	100.0
0.14 - 0.21	1	0.1	99.7
0.21 - 0.29	0	0.0	99.6
0.29 - 0.42	0	0.0	99.6
0.42 - 0.61	0	0.0	99.6
0.61 - 0.87	0	0.0	99.6
0.87 - 1.25	1	0.1	99.6
1.25 - 1.79	0	0.0	99.5
1.79 - 2.56	0	0.0	99.5
2.56 - 3.67	25	1.7	99.5
3.67 - 5.27	197	13.3	97.8
5.27 - 7.55	272	18.4	84.5
7.55 - 10.83	372	25.2	66.1
10.83 - 15.53	254	17.2	40.9
15.53 - 22.27	148	10.0	23.7
22.27 - 31.94	84	5.7	13.7
31.94 - 45.79	74	5.0	8.0
45.79 - 65.66	27	1.8	3.0
65.66 - 94.15	13	0.9	1.2
94.15 - 135.00	4	0.3	0.3
	<hr/> 1476	<hr/> 100.0	



CUMULATIVE FREQUENCY PLOT FOR SILVER

CLASS	FREQUENCY	% FREQUENCY	CUMULATIVE FREQUENCY %
0.1	889	60.2	100.0
0.2	371	25.1	39.8
0.3	108	7.3	14.7
0.4	57	3.9	7.4
0.5	27	1.8	3.5
0.6	15	1.0	1.7
0.7	2	0.1	0.7
0.8	3	0.2	0.6
0.9	1	0.1	0.4
1.0	3	0.2	0.3
	<hr/> 1476	<hr/> 100.0	

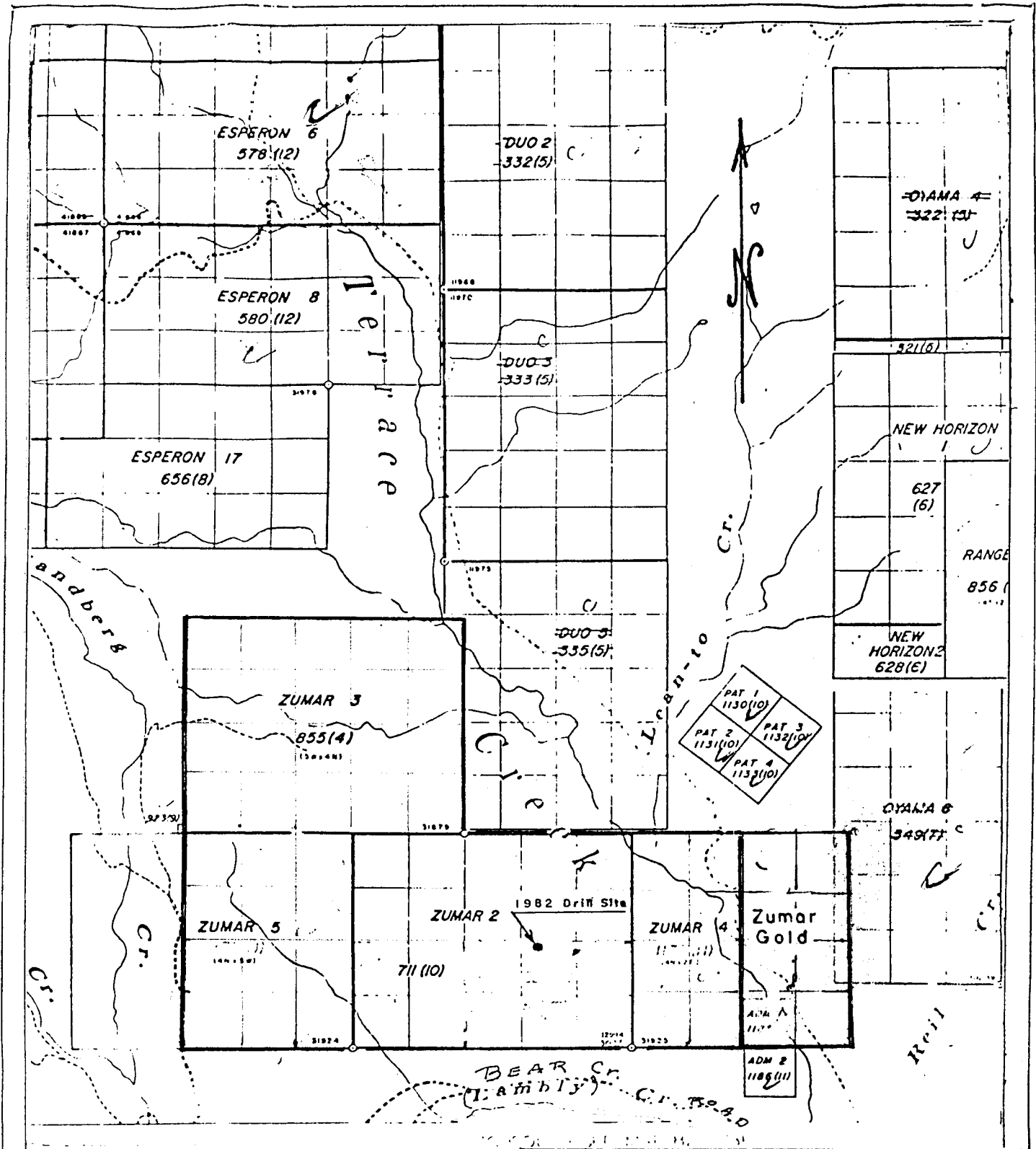




SKYWORLD RESOURCES & DEVELOPMENT LT

LOCATION MAP

PLATE I



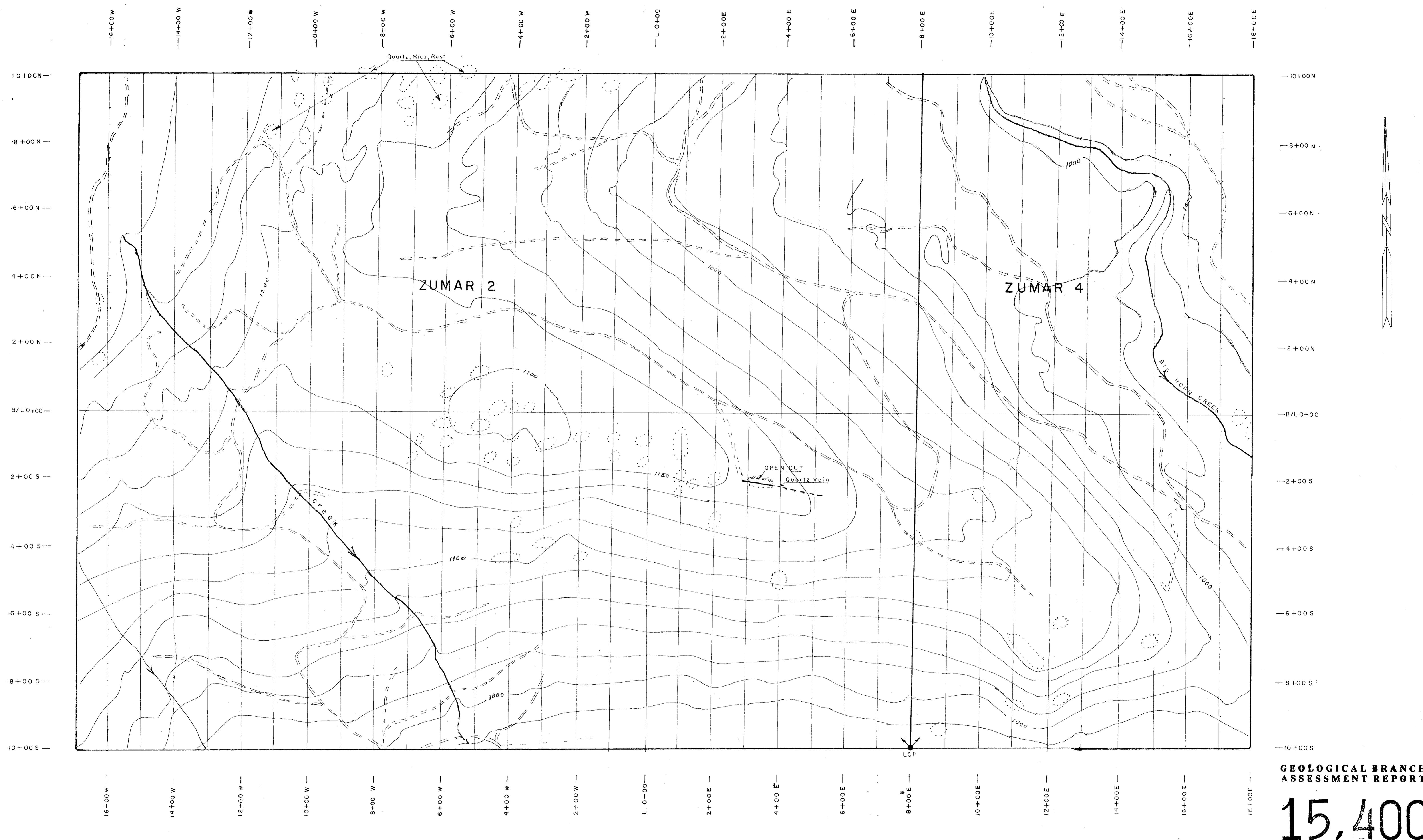
SKYWORLD RESOURCES & DEVELOPMENT LTD.

AREA CLAIM MAP

82 L/4 E

SCALE - 1:50,000

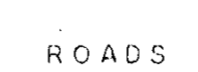

PLATE 2



GEOLOGICAL BRANCH
ASSESSMENT REPORT

15,400

LEGEND

-  ROADS
-  OUTCROPS
- CONTOUR INTERVAL - 20m.

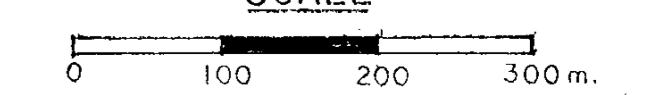
SKYWORLD RESOURCES & DEVELOPMENT LTD.

M.Cs. ZUMAR No. 2 & 4

VERNON MINING DIVISION

TOPOGRAPHIC MAP

SCALE



A.D. WILMOT P. Eng.

Sept. 1986

PLATE 3



**GEOLOGICAL BRANCH
ASSESSMENT REPORT**

15,400

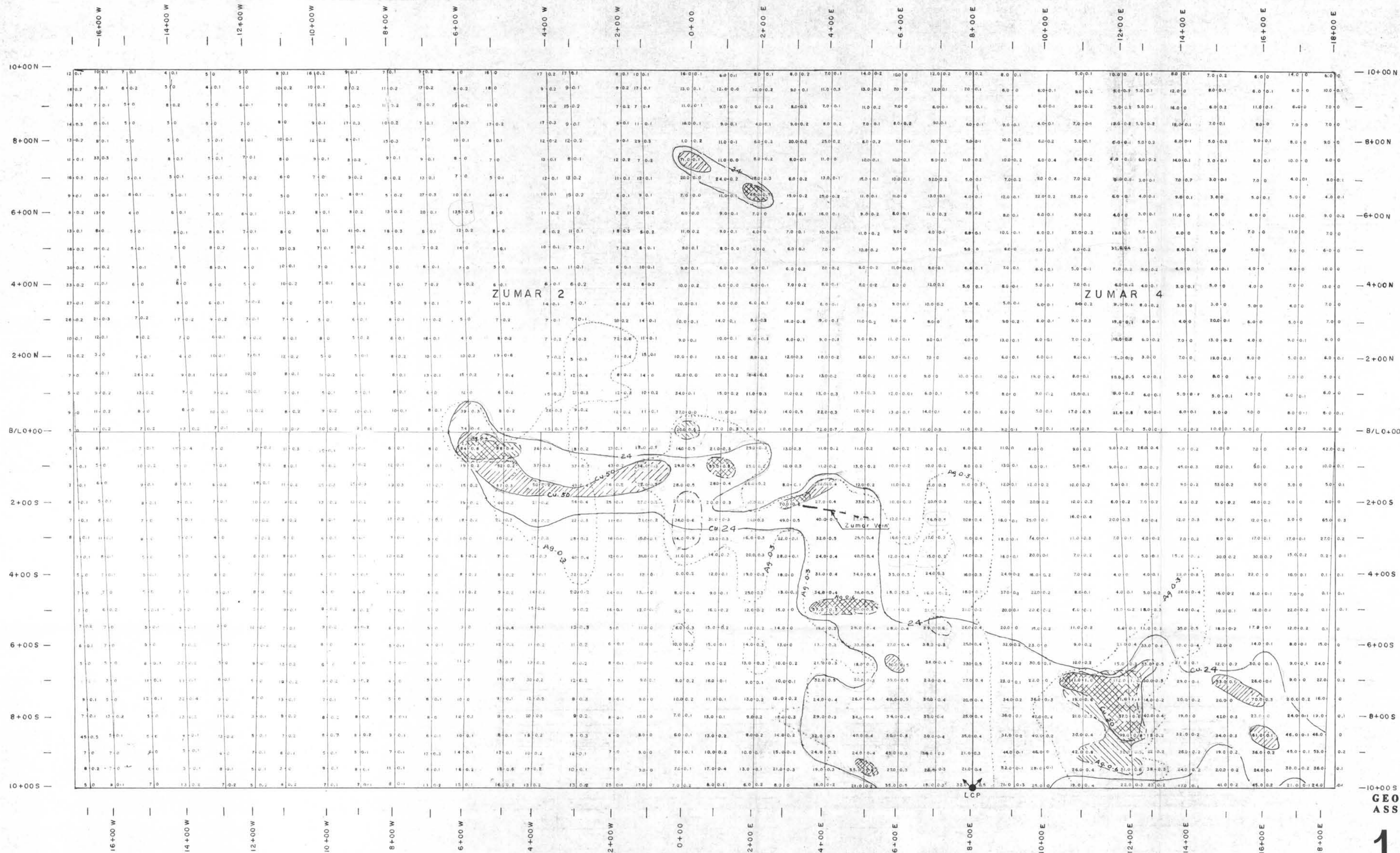
LEGEND

- Magnetic Contour Interval— 1000 Gammas
- Over 60,000 Gammas
- 59,000 to 59,999 Gammas
- 58,000 to 58,999 Gammas
- 57,000 to 57,999 Gammas
- 56,000 to 56,999 Gammas

SKYWORLD RESOURCES & DEVELOPMENT LTD.
M.Cs. ZUMAR No. 2 & 4
 VERNON MINING DIVISION
MAGNETOMETER SURVEY

SCALE
 0 100 200 300m.

A.D. WILMOT P. Eng. Oct. 1986



COPPER
Background — 13 PPM
Threshold — 24 PPM

SILVER
Background — 0.2 PPM
Threshold — 0.3 (Min.), 0.6 (Max)

LEGEND

- COPPER CONTOUR — 24 to 49 PPM
- COPPER CONTOUR — 50 to 112 PPM
- SILVER CONTOUR — 0.3 to 0.5
- SILVER CONTOUR — 0.6 to 1.1
- PPM COPPER — 21 to 3
- PPM SILVER

GEOLOGICAL BRANCH ASSESSMENT REPORT

15,400

SKYWORLD RESOURCES & DEVELOPMENT LTD.
M.Cs. ZUMAR No. 2 & 4
VERNON MINING DIVISION
GEOCHEMICAL SURVEY

