

PRINCE GEORGE

86-862-15565

10/87



Province of British Columbia

Ministry of Energy, Mines and Petroleum Resources

ASSESSMENT REPORT
TITLE PAGE AND SUMMARY

TYPE OF REPORT/SURVEY(S) GEOCHEMICAL	TOTAL COST \$4904.50
--	--------------------------------

AUTHOR(S) **Rene Trifaux** SIGNATURE(S) *[Signature]*

DATE STATEMENT OF EXPLORATION AND DEVELOPMENT FILED **October 6, 1986** YEAR OF WORK **1986**

PROPERTY NAME(S) **MARGO**

COMMODITIES PRESENT _____

B.C. MINERAL INVENTORY NUMBER(S), IF KNOWN _____

MINING DIVISION **Cariboo** NTS **93 A/13W, 93H/4W**

LATITUDE **53°00'** LONGITUDE **121°51'**

NAMES and NUMBERS of all mineral tenures in good standing (when work was done) that form the property [Examples: TAX 1-4, FIRE 2 (12 units); PHOENIX (Lot 1706); Mineral Lease M 123; Mining or Certified Mining Lease ML 12 (claims involved)].

MARGO (20 units), LOUISE-2 (2 units)

OWNER(S)

(1) **Trifco Minerals Ltd.**
R. Trifaux

MAILING ADDRESS
308 - 751 Clarke Road,
Coquitlam, B.C. V3J 3Y3

OPERATOR(S) (that is, Company paying for the work)

(1) **Trifco Minerals Ltd.**
Rene Trifaux

MAILING ADDRESS
Same as above

**GEOLOGICAL BRANCH
ASSESSMENT REPORT**

15,565

SUMMARY GEOLOGY (lithology, age, structure, alteration, mineralization, size, and attitude):

*The Claims underlain by
are
and mica schist.*

Devonian - Mississippian *phyllites, quartzite*

REFERENCES TO PREVIOUS WORK

FILMED

MARGO - LOUISE 2 CLAIMS ASSESSMENT WORKS 1985-1986

TABLE OF CONTENTS

	<u>PAGE #</u>
INTRODUCTION	
Location (see map #1)	1
Access to claims	1
Physiography	1
OBJECT OF PRESENT WORKS	2
GEOLOGY	
Regional geology (see map)	3
Local geology	3 - 6
GEOCHEMISTRY	
Descriptions (comments on works)	7 - 18
Location of samples - lines	19
Histogram	20
Correlation coefficient	21 - 33
Elements grouping	34 - 35
Analyses (reports)	36 - 51
COST SUMMARIES	52 - 58
STATEMENT OF QUALIFICATIONS	59 - 62
PHOTOGRAPHS	
- #1 Louise 2 claim	
- #2 Claim 3N Margo	
- #3 Claim 3N-4N Margo	
MAPS	
- #1 claim map 93A113 Scale 1/50,000	
Mineral claims - Trifco Minerals Ltd. & R. Trifaux	
- #2 regional geology - Sovereign Creek	
NTS 93A/13W Scale 1/50,000	
- #3 map O.F. 858 Geological survey of Canada	
Bed rock geology - Swift River	

INTRODUCTION

Location - geographic

The property is located in the Sovereign Creek area, 38 km South-east of Quesnel at 52°59'20"N

121°53'20"E on NTS map sheet 93A/13.

Access to the Claims

Access to claims is via the Barkerville Road from Quesnel for 29 kms (approx) and the Swift River Forest Road (no 1300). The Swift River Forestry Road is an all weather, secondary road, on it are branching logging roads which are all determined by signs at each bifurcation with the main road.

The one going to the Margo claims is called 13H. The bifurcation is approximately at 17.5 km on the road.

Physiography

Also, the claims are situated on the east flank of the Sovereign Mountain between 3600 and 4500 feet in elevation. Local Relief in Quesnel is 650m (2100 feet). The Sovereign Creek on the claims shows a steep erosion 700m above the culvert situated on the Forestry Road and is diminishing going north in the creek. Outcrops condition are generally poor because of glacial drifts in the areas. The overburdens are variable in their thicknesses. Locally, in some creeks one is able to see the bedrock.

Object of Present Works - Geochemistry Soil Survey

The new geochemical survey done this year has been executed as a follow up of the survey done during the period of 1984-85 where all the elements necessary for a gold signature were detected, all of them in anomalous values.

But this year we added 40 assays for the gold and all of them responded positively and manifested the presence of the precious metal.

We do the survey to corroborate the findings of last year's survey, because the values in Pb, Sb, Bi, Ag, are indicating definitely an area with Gold values.

The last years survey indicated the relevance of pursuing the research for the above precious metals in the area of Margo - Louise claims.

The persistence of the values of the characteristic trace elements in the 1984-85 survey, decided the research of values of Gold in new lines interwoven with this 1984-85 survey, as the plan will show.

We also plan to analyze not only the soils but also outcrops of rocks to see their values in precious metals.

Geology

The claims are underlain 2 main geologic units.

DMS Devonian? & Mississippian

Mississippian

MPA_U sheared mafic rocks (MPA_U) which are containing
Phlogopite micas in several places.

The stratigraphy has a west/north-west trend and dips south-west. On the middle of the Margo claims, graphitic phyllite has been observed on the two right banks of the Sovereign creek. The outcrop is visible on a distance of 200m in length including white quartzitic formation deeply stained with limonitic alterations (samples taken and analyzed)

Also a mica-schist (muscovite) is visible on 120m in length on the right bank, with extensive limonite alterations (samples have been taken and analyzed).

Boulders of ultra mafic rocks are scattered on the west side of the claims, including the Louise 2 claims.

Property Map see map no.

Geology (continued)

Between 2N & 3N & 4N claims, on the west on of the said claim black siltites and phyllites are detected and have been observed this season, quite extensively. Samples have been taken in the showings, some diggings on the north have been executed to find depth. The trend of the showing is 30 to 40 N.West. Pyrite, Sulfides were detected in the Siltites and Phyllites.

Micaceous quartzites dykes have been investigated on the west of the showings trying to know the extent of the formation. The micaceous quartzites have been spotted on the west of the Itula claims, but the muscovites are less prominent. The texture of the rocks on the west of the Itula claims, are more finely structured.

The main trust fault near the geologic contact goes through the Kimo claims and touches the Margo claim no4, on Legal Post line. The MPA (amphibolite) formations are in the vicinity and we found boulders of ultra mafic rocks on the west of the Margo claims, showing the extent of the ultrabasic formation, from the Do-Do creek to the Kimo - Margo claims.

The Tom Creek succession with its quartzitic phyllite and schists is seen on the 13J Road for approximately 730m (MPR). The outcrops are sporadically distributed and are not voluminous; trenchings should be done and will be the next step on our exploration.

Geology (continued)

The metamorphic rocks encountered in the claims are not a part of the thermal aureole. We consider the rocks as low grade metamorphic aureole. The Sovereign Mountain intrusion is the primary intrusion. Beside it, several ultrabasic intrusions (pipes) developed and created the ultrabasic bodies that we know, the sporadic boulders found on the west of the Margo claim are definitely low grade metamorphic rocks and even the mica-schists are considered of the same nature.

The basic intrusions are hotter than acidic ones, and the Quartzite (acidic) intrusions are less wide than the basic, in general and it is the case here.

The regional metamorphisme has been created as a consequence of the mountain building in the area. The country rocks are represented to the South and West of Sovereign Mtn. and consist of the Quesnel group formation. Of course this is a very simplified understanding of the geology of the area.

The calcium carbonate rocks found in this area are west of the Margo - Louise claims. The garnets are found in the skarn directly south of the Sovereign Mtn. The dolomite is found in the same area, but to the north of the talcs in the region. Epidotes (huge boulders) are seen on the South-west of the Mtn. and also is the metamorphics.

GEOLOGY (continued)

The grey rock formation found in the 3N claims, in the Margo group, is a dense, fine grained rock which can even be confused with massive sedimentary rock. But the field relationship is definitely metamorphic and not sedimentary. No fold (sedimentary) exists in the area close to the claims anyway.

In the grey rock itself a directional fabric which is seen in many samples, is like a banding of dark minerals with always the same type of direction, it is like a layer but is more irregular than a layer or it seems to be lineated (like a line) always in the same direction.

In the metamorphic rocks South of the claims, where mica - quartzites are present, the micas show their foliation. The cleavage is pronounced in these types of metamorphic rocks.

In the Phyllites and black schists we believe there is a crenulated area caused by a second cleavage? The micas have been deflected and rounded and curved because some rocks which are more resistant than the mica obliged them to curve and change direction. (Typical ~~is~~ some samples)
071

Magnetite is present in the ultra basic and the metamorphic. When a sample is ground, (200 mesh), a lot of magnetite adhere to the magnet.

Geochemistry - Min.En Laboratories Report 6-447R

Sample from white quartzitic formation rocks

Pb	.01%	91 ppm (anomalous)
Zn	.01%	91 ppm
Cu		192 ppm (anomalous)
Ag		1.4 ppm (anomalous)
Hg		65 ppm (anomalous)
As		12 ppm (anomalous)
Sb		5 ppm (anomalous)
Au	.01%/tonne	(10 ppb)

18 elements analyses of the rock

CD	21 ppm
Li	35 ppm
Mo	2 ppm
Ni	251 ppm
TH	1
Al2O3	13.58%
Ba	.015%
CaO	9.25%
CR2O3	.16%
FE FE 2O3	11.11%
K2O	.14%
MNO2	.89%
NB	.01% (91ppm) (anomalous)
TlO2	1.23% (highly anomalous)

W	.006
Zr	.007

Bondar-Clegg

Report 426-2433 nothing outstanding in the report.

Geochemistry (continued)

Min.En Laboratories Ltd. Report 6-444R (rocks)

Grey rock - grey rock formation - one outcrop of this type of formation has been analyzed and gave encouraging results in the following metals:

<u>Lead</u>	91 ppm (highly anomalous)
<u>Zinc</u>	91 ppm (not anomalous) close to 112 threshold
<u>Copper</u>	192 ppm (anomalous-quite good)
<u>Mercury</u>	65 ppm (highly anomalous)
<u>Arsenic</u>	12 ppm (anomalous)
<u>Antimony</u>	5 ppm (threshold values)
<u>Gold</u>	.01 gr/tonne (10 ppb)

The outcrop is quite interesting and it is only from one outcrop. More work, more analyses will be done on the outcrops.

The analyses of the rock shows 9.25% Cao. The presence of calcium in the area. Also 91 ppm of Niobium is anomalous and demands further attention of the possibility of Niobium in the area. TiO2 is quite high with the presence of 1.23% in the samples.

Geochemistry

In view of the sampling problems in Gold geochemistry, it is unwise to discount any anomaly. The spatial abundance or clustering of anomalous values, regardless of magnitude, should constitute the guide to follow up work. (Precious Metals in the Northern Cordillera) published by the Association of Exploration Geochemists)

Gold analyses in the ppb range has been applied to the host rocks on several properties in the Val d'or area of Quebec with the following results:

Larnaque area - yielded 4 million oz.

area west of the plug ore body. (0.23 million oz of Gold)

The no2 mine .118 million of ounces.

The no3 pluton ore body (0.06 million oz)

Gold Halos envelop each of these areas. The critical gold value seems to be 10 ppb. All ore areas are enveloped by the 10 ppb contour line. The Halo around the main ore body is large; it is approximately 2 km in diameter.

In this geochemical survey we are considering the 5 ppb as the Gold halo, and the 10 ppb and up as anomalous. Reading with indications of 10 ppb are considered as critical Gold values for the indication of a deposit.

GEOCHEM SURVEY 1985-1986 - COMMENTS ON THE ANOMALICS

The histogram drawn by R. Trifaux is conclusive regarding the following metals.

Pb is outstanding and is the first metal in order of abundance in the characteristic trace element of this survey, with values reaching up to 66 ppm - 90% above threshold, pervasive on all the lines of the survey.

Bi - 29 samples above threshold or 72% which is also highly anomalous and the second metal in order of abundance in the characteristic trace element of the survey, with values reaching 5 ppm. (17 values reaching 5 ppm). Presence on all the lines of the survey.

Sb - 14 samples anomalous or 35% above threshold with one value reaching 10 ppm.

Ag - is not highly anomalous in this area but the presence of silver is found in all the samples with persistence in the area. Present on all the lines of the survey.

As - with 11 samples having values above threshold, very weak in the middle of the survey.

Zn - accompanies all the survey. It is found in all the best of the samples and to 90 ppm in places. But not one sample reached the 112 ppm we consider as threshold in the survey.

GEOCHEM SURVEY 1985-1986 COMMENTS ON THE ANOMALICS (continued)

Au - this precious metal has been encountered in all the lines, in all the pits of the survey with a firm persistence all over the claims surveyed. If one takes 10 ppb as the threshold , 14 samples are with that value of threshold or over the threshold. I consider that gold is high, wth 14 values of 10 ppb range and over, and 26 with 5 ppb. In the values above 10 ppb, 3 have 20 ppb and 1 has 30 ppb.

If one considers the observations regarding the spatial abundance or the clustering of anomalous values, regardless of magnitude as a guidance, (observation submitted in the book from the Associaton of Exploration Geologists) the survey as it is, with its anomalous values and the clusters of 5 ppb, is our guide for the follow up work for the precious metals in this area in the near future. Trenching will be one of the next steps to be considered in the exploration programs related in this area.

The survey done in 1984 - 1985 came with the following results.

Pb - 88% of the values were anomalous

Sb - 88% of the values were anomalous

Mo - 88% of the values were anomalous

Bi - 100% of the values were anomalous

Ag - 60% of the values were anomalous

Au - was not analyzed

Co - was always present

GEOCHEM SURVEY 1985-1986 COMMENTS ON THE ANOMALICS (continued)

This year, 1985 - 1986 the survey gives the following:

Pb - 90% of the values were anomalous

Sb - 35% of the values were anomalous

Mo - not analyzed

Bi - 72% of the values were anomalous

Ag - 32% of the values were anomalous

Au - 35% + >> " " "

Geochemistry (continued)Min-En Laboratories Report 6-779S and Pl&2

Sample	Ag	As	Bi	Pb	Sb	Zn	Au	Cd	Co	Cu	Mo	Ni	V
	ppb												
MLA+ 00	.3	18	4	59	7	79	10	4.1	9	33	7	51	30.2
+100	.4	1	2	49	4	67	5	2.6	8	17	6	43	27.5
+200	.3	4	4	58	6	64	5	3.7	6	19	5	45	30.2
+300	.4	1	2	41	2	64	20	2.9	7	16	4	45	23.0
+400	.3	1	2	31	1	50	10	3.1	4	13	3	17	24.2
MLB+ 00	.2	1	2	51	5	60	5	2.1	6	21	5	52	30.2
+100	.4	8	5	49	4	55	5	3.9	5	17	6	32	35.3
+200	.5	4	5	57	6	85	10	4.6	9	36	7	66	34.0
+300	.4	1	4	37	3	68	5	3.9	6	16	4	36	30.8
+400	.4	10	5	66	6	91	20	7.9	6	19	6	43	26.0
MLC+ 00	.4	6	5	40	2	74	5	4.6	8	26	5	52	29.3
+100	.5	12	4	59	3	101	5	5.3	13	42	6	115	40.8
+200	.6	9	5	33	4	54	10	2.9	5	15	5	23	32.5
+300	.5	8	5	49	2	60	30	3.5	8	29	3	35	21.3
+400	.3	1	4	32	1	68	10	2.7	5	21	2	24	24.1
MLD+ 00	.4	2	5	55	3	78	5	4.6	7	24	6	37	35.9
+100	.6	29	5	70	10	90	5	5.8	8	38	8	39	30.0
+200	.4	13	5	55	4	71	10	3.3	9	23	4	44	25.4
+300	.2	1	2	38	2	53	10	2.6	4	13	2	27	22.6
+400	1.9	18	5	57	5	58	5	5.5	7	48	5	40	27.7
MLE+ 00	.4	12	4	47	4	60	5	3.8	7	18	5	35	31.1
+100	.4	1	2	11	1	23	10	0.4	2	15	1	5	21.3
+200	.2	6	5	53	4	60	5	4.0	8	11	5	36	24.9
+300	.6	1	4	42	1	75	5	3.8	9	33	4	45	26.1
+400	.7	4	4	40	1	61	5	2.8	7	43	3	29	30.8
MLF+ 00	.1	1	4	37	3	56	20	3.5	7	19	5	35	26.5
+100	.3	1	4	40	3	39	5	3.3	4	20	4	16	33.3
+200	.4	1	2	62	4	58	10	3.6	8	21	5	36	30.2
+300	.4	1	2	20	1	43	5	1.7	4	17	2	8	19.5
+400	.5	1	2	11	1	20	5	0.6	2	18	1	3	16.2
MLG+ 00	.1	3	5	45	3	69	5	3.2	7	29	7	42	37.4
+100	.4	1	5	47	1	72	5	3.5	7	28	3	41	19.2
+200	.6	1	5	38	1	59	10	3.1	7	36	2	30	27.4
+300	.3	11	5	34	1	55	5	3.8	6	34	3	21	36.6
+400	.5	1	5	23	1	48	5	2.7	5	32	2	13	30.5
MLH+ 00	.2	1	2	33	1	52	5	2.3	5	20	4	26	26.1
+100	.2	1	3	39	1	70	5	2.7	6	23	3	25	27.7
+200	.9	1	4	16	1	48	5	2.8	5	36	1	25	28.7
+300	.2	17	5	54	2	68	5	2.4	5	27	4	20	28.0
+400	.8	1	4	38	1	56	5	4.9	7	31	3	19	22.8
Samples	40	40	40	40	40	40	40	40	40	40	40	40	40
Threshold	.5	8	4	20	4	110	10	1	--	20	5	--	--
Above Threshold	13	11	29	38	14	0	14	38	--	24	18	--	--
Percentage	32	27	72	90	35	0	35	95	--	60	45	--	--

GEOCHEMICAL SURVEY EXECUTED ON MARGO & LOUISE 2 CLAIMS1984 - 1985 ASSESSMENT WORKS TRIFCO MINERALS PROPERTY

Claims - Margo #1 to #20 & Louise #1 & #2 = 22 claims

SAMPLES	AG	BI	CD	CO	CU	MO	NI	PB	SB	ZN
S1-000	1.2	19	.4	8	18	6	28	27	6	63
S1-250	.8	12	.8	7	21	6	29	22	5	43
S1-500	.5	8	.4	4	15	3	14	13	2	22
S1-750	.8	16	.4	8	17	6	35	28	5	50
S1-1000	1.1	19	1.2	9	19	7	34	27	7	57
S2-000	.8	17	1.2	12	30	9	36	39	8	91
S2-250	.6	14	.6	11	16	6	45	27	6	71
S2-500	.8	15	.8	13	18	7	53	34	7	64
S2-750	.8	11	.8	9	17	6	30	30	6	52
S2-1000	1.3	16	.8	7	24	6	20	27	5	58
S4-000	1.2	13	2.0	15	29	6	54	36	7	99
S4-250	.6	12	.6	5	12	6	17	28	6	41
S4-500	1.0	20	1.1	10	21	8	35	38	8	60
S4-750	.8	15	1.0	10	27	6	46	40	6	59
S4-1000	1.3	13	.4	6	23	3	14	19	3	46
S2S1-000	1.2	24	.8	17	26	9	38	44	9	89
S2S1-250	1.2	18	1.1	17	39	9	92	41	9	110
S2S1-500	1.2	19	1.1	13	19	7	63	37	8	77
S2S1-750	1.2	15	1.6	14	29	7	82	43	8	61
S2S1-1000	1.0	11	.2	4	19	3	21	14	3	27
S2S2-000	1.1	19	1.1	10	27	10	33	43	9	74
S2S2-250	.8	12	1.0	9	20	6	36	34	5	49
S2S2-500	1.1	19	1.6	15	23	9	111	34	8	78
S2S2-750	1.0	15	1.2	12	27	6	41	25	6	51
S2S2-1000	1.2	19	.6	20	35	8	70	51	8	76
Samples	25	25	25	25	25	25	25	25	25	25
Threshold	.9	5				4		20	5	
Above Threshold	15	25				22		22	18	
Percentage	60%	100%				88%		88%	88%	

GEOCHEMISTRY

The latest analyses required from the laboratory, on the pulp already established on the report 6-779S showed some anomalous readings as follows:

Cd - 40 samples - 38 anomalous values - 95% above threshold

Co - The presence of Cobalt is continuous in the ores but no anomalous values

Cu - The values encountered although remarkable in their continuity are not anomalous

Mo - Anomalous reading in 18 samples - with a threshold of 5, 45% of the values are anomalous but only slightly

V - Nothing special about the values. Boyle shows the presence of V in Gold environments.

Assessment Works 1985-86 - Geochemistry (continued)

Holes	Depth	Colour	Nature of Soils	Depth	Colour	Nature of Samples
MLA+00	4"	dark grey	clay(rocky)	MLE+00	7"	light brown sandy clay
MLA+100	8"	dark grey	clay	MLE+100	8"	dark brown sandy clay
MLA+200	7"	dark grey	clay	MLE+200	8"	grey sandy clay
MLA+300	10"	greyish	gravely	MLE+300	8"	light grey gravely
MLA+400	8"	light rust	sandy	MLE+400	8"	dark brown sandy loam
MLB+00	8"	grey	clay	MLF+00	8"	grey clay
MLB+100	8"	dark brown	clay	MLF+100	8"	rusty brown sandy
MLB+200	7"	dark grey	clay	MLF+200	8"	dark grey sandy loam
MLB+300	8"	light brown	clay	MLF+300	8"	dark brown sandy gravel
MLB+400	7"	dark grey	clay	MLF+400	8"	dark brown sandy clay
MLC+00	6"	light brown	clay	MLG+00	8"	dark brown sandy clay
MLC+100	8"	grey	clay	MLG+100	8"	dark brown sandy
MLC+200	8"	brown	sandy clay	MLG+200	8"	light brown sandy
MLC+300	8"	rustry	gravelly	MLG+300	8"	dark brown sandy
MLC+400	10"	light brown	sandy	MLG+400	8"	dark brown sandy
MLD+00	8"	light brown	sandy clay	MLH+00	6"	dark brown sandy gravel
MLD+100	8"	light brown	sandy gravel	" 100	8"	dark brown sandy gravel
MLD+200	7"	rusty brown	sandy gravel	" 200	8"	dark brown sandy gravel
MLD+300	8"	rusty brown	sandy gravel	" 300	8"	dark brown sandy gravel
MLD+400	10"	dark brown	loamy	MLH+400	8"	dark brown sandy gravel

20 samples

20 samples

all bagged in Kraft paper with locations.
July 1986

Geochemistry (continued)

Characteristic Trace Elements in Order of Abundance
in 1984-85 - 1985-86

	<u>Pb</u>	<u>Sb</u>	<u>Mo</u>	<u>Bi</u>	<u>Ag</u>	<u>Au</u>
1984-85	88%	88%	88%	100%	60%	not analyzed
1985-86	90%	35%	not analyzed	72%	32%	35%+

in 1984-85 trace in element in order of abundance were

Bi, Pb, Sb, Mo, Ag

in 1985-86

Pb, Bi, Sb, Ag

Au - outstanding

The order of abundance and the same presence of the characteristic trace elements on the 2 surveys are in the list of components of the signature of Gold, when they are present.

ie. (As, Bi, Co, Cu, Mo, Ni, Pb, Sb, Zn)

The determinations of the proportions of Au, Ag have not been done. Cu as an element has not been analyzed. From the survey done in 1984-1985, the Molybdenum presence was high in the survey, this year it has been omitted by error, but the pulps will be analyzed for Mo to compare the presence and persistence of Mo in the new survey.

We panned several areas of the claims and other claims in the areas, we never saw any Gold in concentrates in any pan. But we know that the stream of the Sovereign Creek carries fine Gold.

Geochemistry - Characteristic Trace Elements (continued)

We also know that 2 placer claims property found Gold today in the Sovereign, one not far from the Trifco claims.

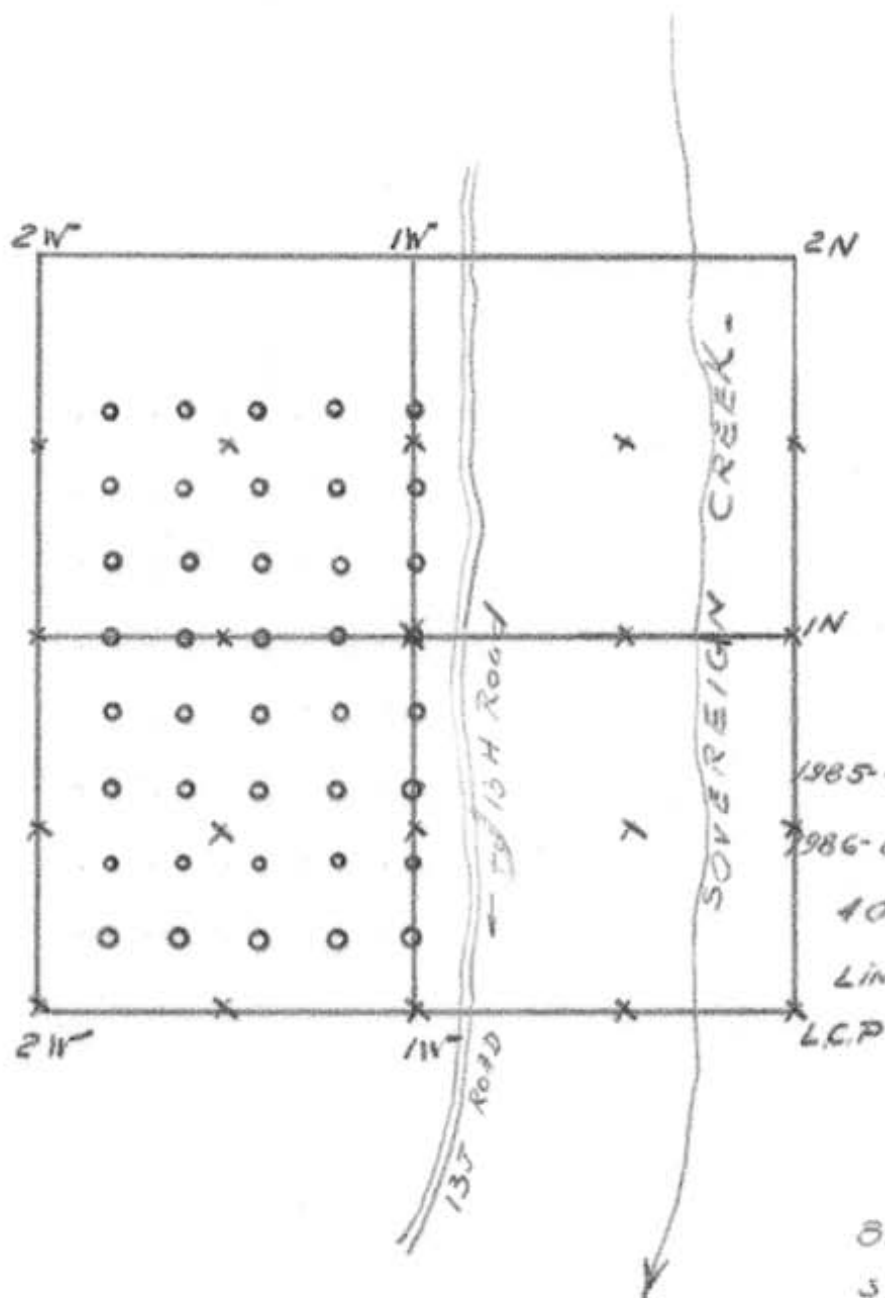
Conclusion of the Survey

We know for sure that more than 10 per cent of the samples contain Gold. We also established that 35% of the samples carry values anomalous in the Gold precious metal. We also know that one survey had values in Pb, Mo, Bi, Sb.

The last survey had values in Pb, Bi, Sb, Au. We consider that the 2 surveys established the abundance and the characteristic trace elements permitting to believe in a Gold signature on the claims.

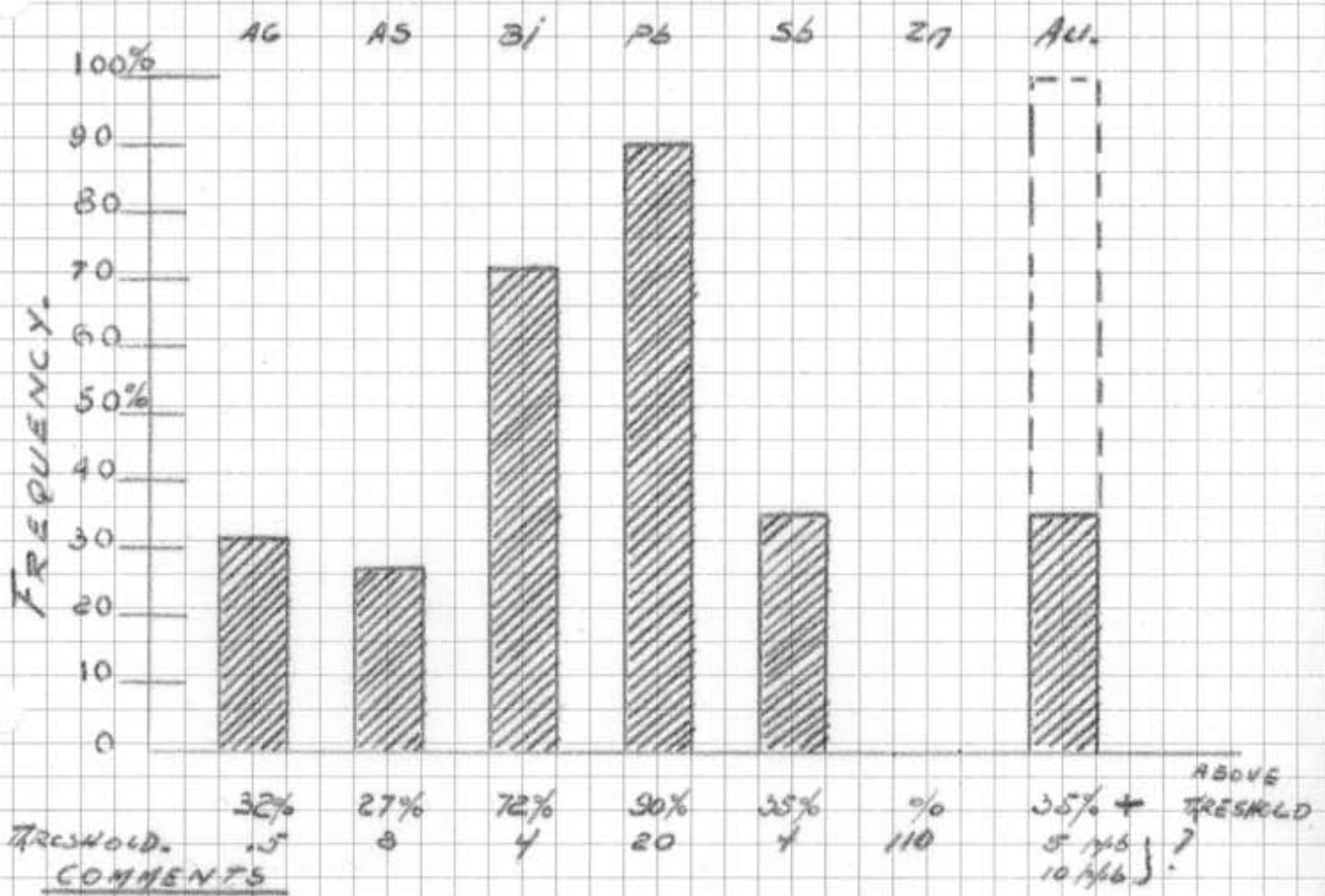
We know that works should be done in the future to establish a bigger area with the same precious metals and the same abundance of the characteristic trace elements. More surveys, adjacent to the ones which have been done should be started at once and trenching should be part of the programs.

MARGO-LOUISE-2-CLAIMS-CARIBOO.
ASSESSMENT WORK FOR 1985-1986
GEOCHEM SURVEY.



HISTOGRAM GEOCHEM 679-5 (MIN-EN)

1985-1986
MURGO - LOUISE - 2 CL -



IN VIEW OF THE SAMPLING PROBLEMS IN GOLD GEO-CHEMISTRY, IT IS UNWISE TO DISCOUNT ANY ANOMALY

THE SPATIAL ABUNDANCE OR CLUSTERING OF ANOMALOUS VALUES, REGARDLESS OF MAGNITUDE, SHOULD CONSTITUTE THE GUIDE TO FOLLOW-UP WORK.

" (PRECIOUS METALS IN THE NORTHERN CORDILLERA) BY THE ASSOCIATION OF EXPLORATION GEOCHEMISTS "

SEPTEMBER 1986

MIN-EN LABORATORIES LTD.

SPECIALISTS IN MINERAL ENVIRONMENTS

705 WEST 15TH STREET NORTH VANCOUVER, B.C. CANADA V7M 1T2

TELEX: 04-352828 PHONE: (604)980-5814 OR (604)988-4524

CORRELATION COEFFICIENTS

COMPANY: TRIFCO MINERALS LTD.

DATE: OCTOBER 3/86

ATTN: R. TRIFAUX

SAMPLE TYPE: SOIL

PROJECT: MARG/6

ANALYSIS TYPE: I.C.F.

FILE#: 4-680/4-850/5-416/6-779

THE TABLE BELOW REPRESENTS THE PEARSON CORRELATION MATRIX, SHOWING THE INTER-ELEMENT CORRELATION COEFFICIENTS. THOSE VALUES THAT EXCEED THEIR CRITICAL VALUE FOR .01 LEVEL OF SIGNIFICANCE ARE SHOWN IN DARKER PRINT AND UNDERLINED.

	AG	AS	BI	PB	SB	ZN
AG	1.000	<u>.484</u>	<u>.734</u>	-.156	<u>.488</u>	.077
AS		1.000	<u>.558</u>	.170	<u>.658</u>	<u>.472</u>
BI			1.000	-.099	<u>.701</u>	-.075
PB				1.000	<u>.312</u>	.096
SB					1.000	.077
ZN						1.000

MIN-EN LABORATORIES LTD.

SPECIALISTS IN MINERAL ENVIRONMENTS

705 WEST 15TH STREET NORTH VANCOUVER, B.C. CANADA V7M 1T2

TELEX: 04-352828 PHONE: (604) 980-5814 OR (604) 988-4524

STATISTICAL SUMMARY ON AG

COMPANY: TRIFCO MINERALS LTD.
 ATTN: R. TRIFAUX
 PROJECT: MARG/6
 FILE#: 4-680/4-850/5-416/6-779

DATE: OCTOBER 3/86
 SAMPLE TYPE: SOIL
 ANALYSIS TYPE: I.C.P.

NUMBER OF SAMPLES: 71
 MAXIMUM VALUE: 1.90 PPM
 MINIMUM VALUE: .10 PPM
 MEAN: .65 PPM
 STD. DEVIATION: .39 PPM
 COEFF. OF VARIATION: .60

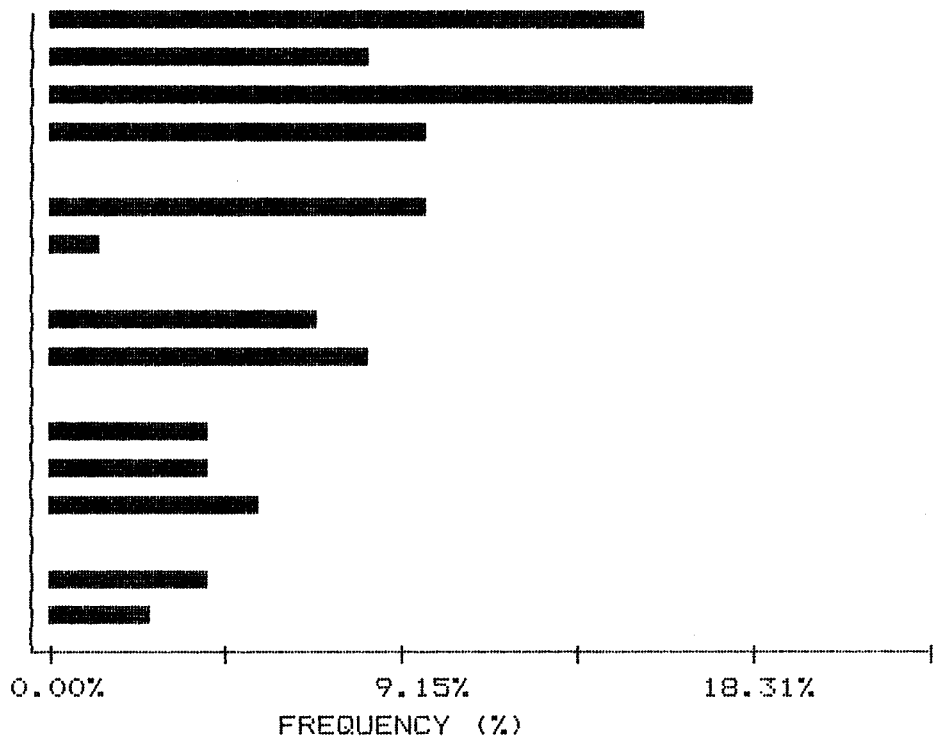
5 HIGHEST AG VALUES:
 MLD+400 20M 1.9 PPM
 ML2-1000MW 1.4 PPM
 ML4-1000 1.4 PPM
 L2L1-000 1.3 PPM
 L2L1-250 1.3 PPM

HISTOGRAM FOR AG

CLASS INTERVAL = .07

MID CLASS	CLASS
PPM	%

<	.30	15.49
	.34	8.45
	.41	18.31
	.48	9.86
	.55	0.00
	.62	9.86
	.69	1.41
	.76	0.00
	.83	7.04
	.90	8.45
	.97	0.00
	1.04	4.23
	1.11	4.23
	1.18	5.63
	1.25	0.00
	1.32	4.23
>	1.40	2.82



MIN-EN LABORATORIES LTD.

SPECIALISTS IN MINERAL ENVIRONMENTS

705 WEST 15TH STREET NORTH VANCOUVER, B.C. CANADA V7M 1T2

TELEX: 04-352828 PHONE: (604)980-5814 OR (604)988-4524

CUMMULATIVE PROBABILITY PLOT ON AG

COMPANY: TRIFCO MINERALS LTD.

DATE: OCTOBER 3/86

ATTN: R. TRIFAUX

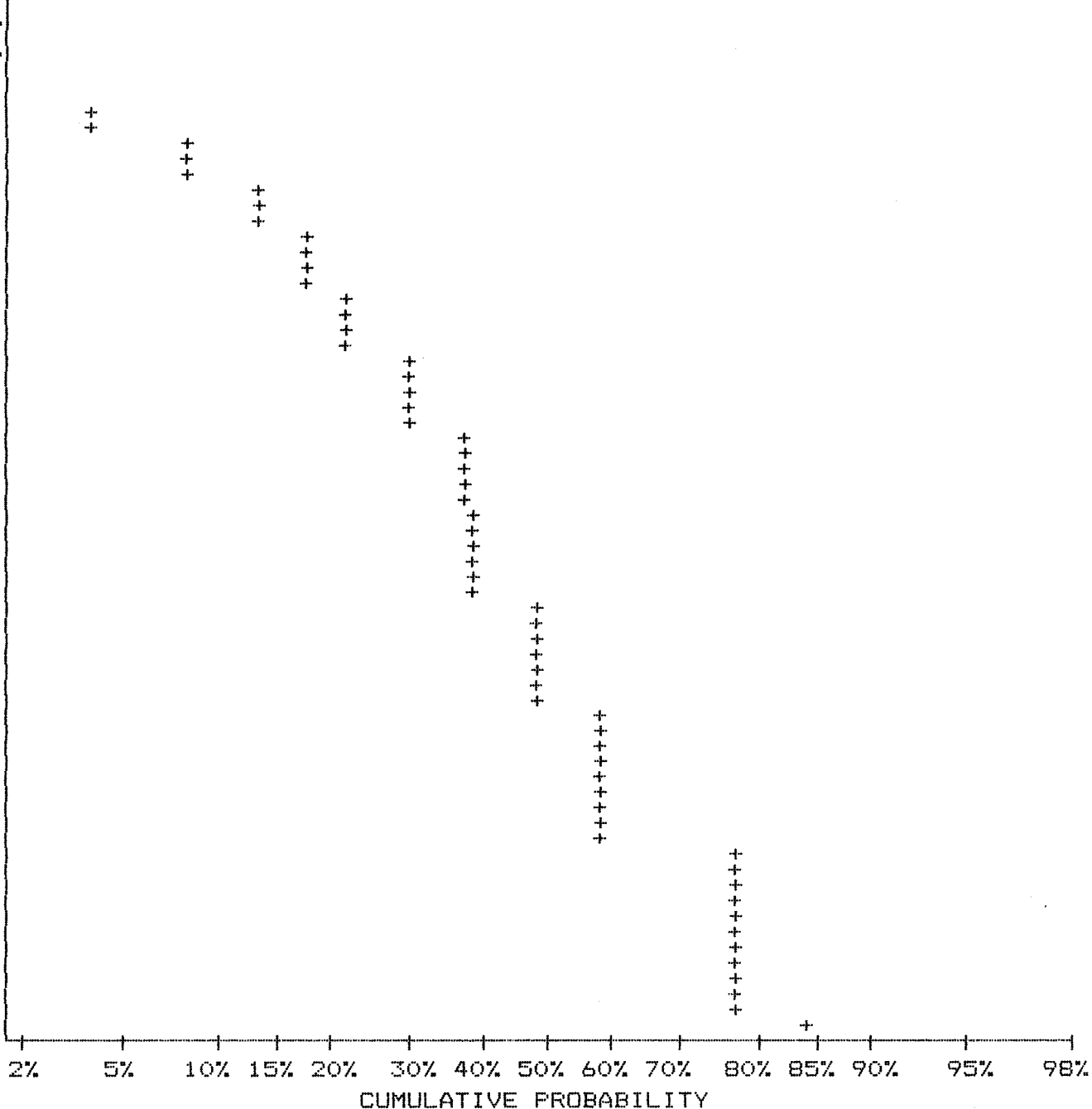
SAMPLE TYPE: SOIL

PROJECT: MARG/6

ANALYSIS TYPE: I.C.P.

FILE#: 4-680/4-850/5-416/6-779

UPPER LIMIT (PPM)	CUMMUL. FREQ. (%)
1.30	4.23
1.24	8.45
1.18	14.08
1.12	14.08
1.06	18.31
1.01	18.31
.96	22.54
.91	22.54
.87	30.99
.83	30.99
.79	38.03
.75	38.03
.71	38.03
.67	39.44
.64	39.44
.61	39.44
.58	49.30
.55	49.30
.52	49.30
.50	59.15
.47	59.15
.45	59.15
.43	59.15
.41	59.15
.39	77.46
.37	77.46
.35	77.46
.33	77.46
.32	77.46
.30	84.51



MIN-EN LABORATORIES LTD.

SPECIALISTS IN MINERAL ENVIRONMENTS

705 WEST 15TH STREET NORTH VANCOUVER, B.C. CANADA V7M 1T2

TELEX: 04-352828 PHONE: (604)980-5814 OR (604)988-4524

STATISTICAL SUMMARY ON AS

COMPANY: TRIFCO MINERALS LTD.

ATTN: R. TRIFAUX

PROJECT: MARG/6

FILE#: 4-680/4-850/5-416/6-779

DATE: OCTOBER 3/86

SAMPLE TYPE: SOIL

ANALYSIS TYPE: I.C.P.

NUMBER OF SAMPLES: 71
 MAXIMUM VALUE: 39.00 PPM
 MINIMUM VALUE: 1.00 PPM
 MEAN: 10.28 PPM
 STD. DEVIATION: 9.96 PPM
 COEFF. OF VARIATION: .97

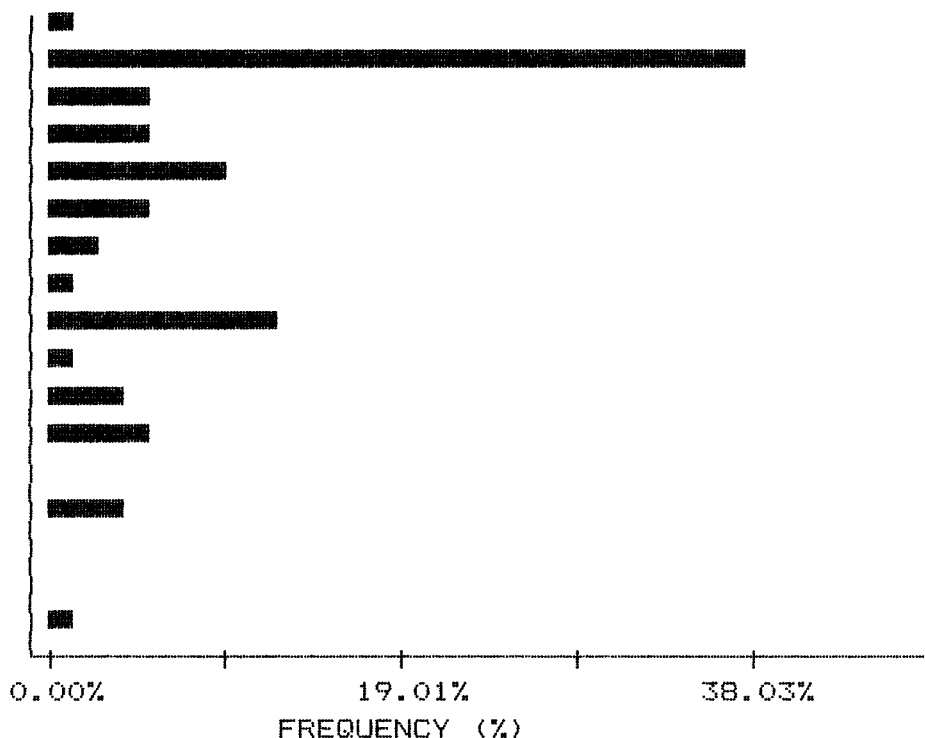
5 HIGHEST AS VALUES:
 MARG-NO3 39 PPM
 L2L1-250 35 PPM
 L2L2-1000 30 PPM
 L2L2-500 29 PPM
 MLD+100 20M 29 PPM

HISTOGRAM FOR AS

CLASS INTERVAL = 2.27

MID CLASS PPM	CLASS %
---------------	---------

<	1.00	1.41
	2.13	38.03
	4.40	5.63
	6.67	5.63
	8.94	9.86
	11.21	5.63
	13.48	2.82
	15.75	1.41
	18.02	12.68
	20.29	1.41
	22.56	4.23
	24.83	5.63
	27.10	0.00
	29.37	4.23
	31.64	0.00
	33.91	0.00
>	35.00	1.41



MIN-EN LABORATORIES LTD.

SPECIALISTS IN MINERAL ENVIRONMENTS

705 WEST 15TH STREET NORTH VANCOUVER, B.C. CANADA V7M 1T2

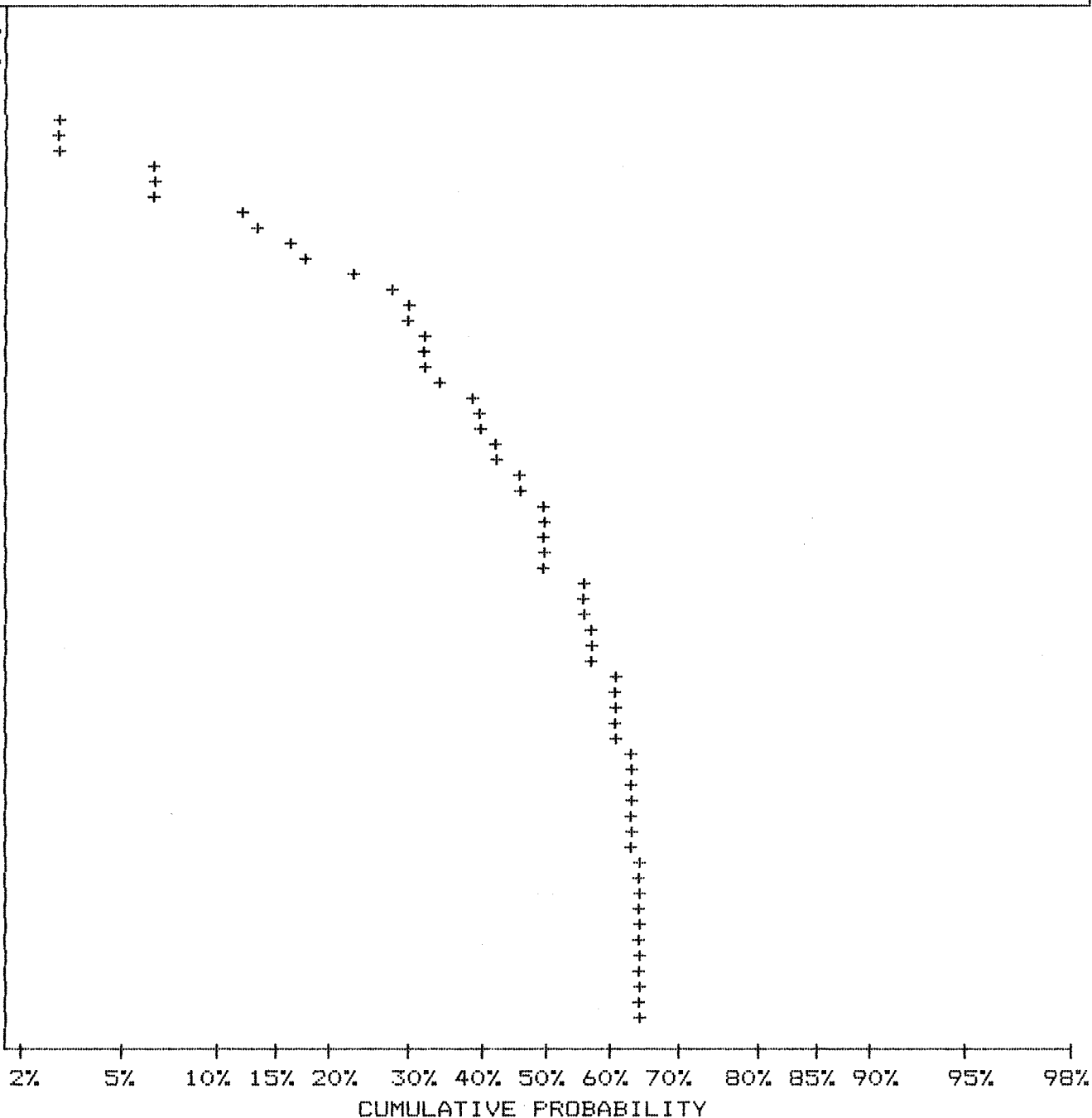
TELEX: 04-352828 PHONE: (604)980-5814 OR (604)988-4524

CUMMULATIVE PROBABILITY PLOT ON AS

COMPANY: TRIFCO MINERALS LTD.
 ATTN: R. TRIFAUX
 PROJECT: MARG/6
 FILE#: 4-680/4-850/5-416/6-779

DATE: OCTOBER 3/86
 SAMPLE TYPE: SOIL
 ANALYSIS TYPE: I.C.P.

UPPER LIMIT (PPM)	CUMMUL. FREQ. (%)
32.21	2.82
28.58	7.04
25.35	7.04
22.49	14.08
19.95	18.31
17.70	28.17
15.70	30.99
13.93	32.39
12.36	35.21
10.96	40.85
9.73	43.66
8.63	46.48
7.66	50.70
6.79	50.70
6.03	50.70
5.35	56.34
4.74	57.75
4.21	57.75
3.73	61.97
3.31	61.97
2.94	63.38
2.61	63.38
2.31	63.38
2.05	63.38
1.82	64.79
1.61	64.79
1.43	64.79
1.27	64.79
1.13	64.79
1.00	98.59



MIN-EN LABORATORIES LTD.

SPECIALISTS IN MINERAL ENVIRONMENTS

705 WEST 15TH STREET NORTH VANCOUVER, B.C. CANADA V7M 1T2

TELEX: 04-352828 PHONE: (604)980-5814 OR (604)988-4524

STATISTICAL SUMMARY ON BI

COMPANY: TRIFCO MINERALS LTD.
ATTN: R. TRIFAUX
PROJECT: MARG/6
FILE#: 4-680/4-850/5-416/6-779

DATE: OCTOBER 3/86
SAMPLE TYPE: SOIL
ANALYSIS TYPE: I.C.P.

NUMBER OF SAMPLES: 71
MAXIMUM VALUE: 24.00 PPM
MINIMUM VALUE: 2.00 PPM
MEAN: 7.86 PPM
STD. DEVIATION: 6.28 PPM
COEFF. OF VARIATION: .80

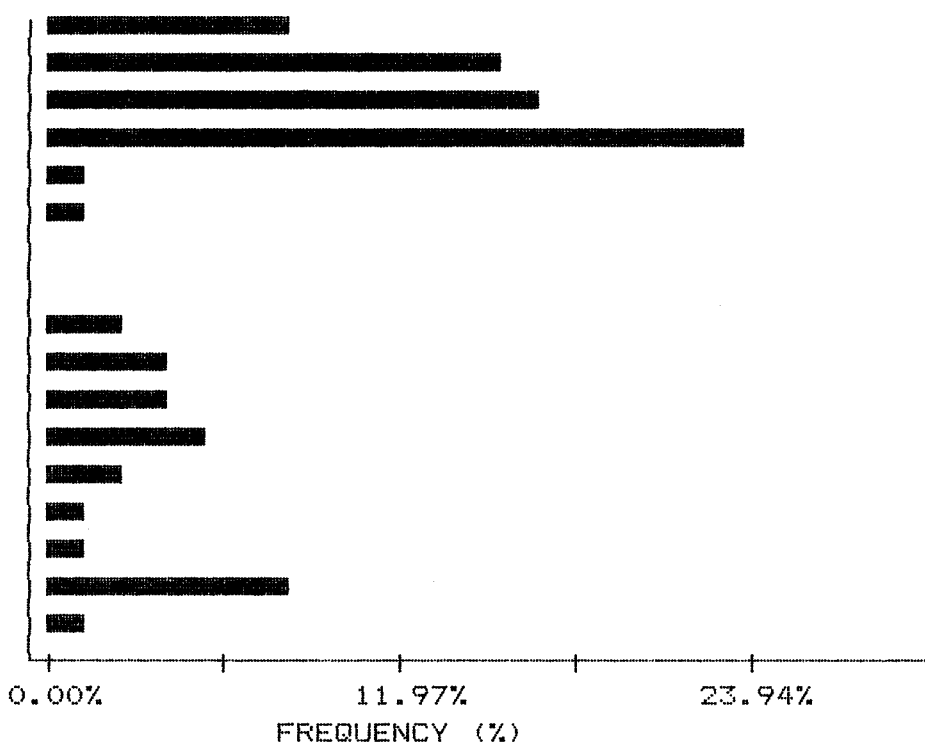
5 HIGHEST BI VALUES:
L2L1-000 24 PPM
ML4-500 20 PPM
ML1-000 19 PPM
ML1-1000MW 19 PPM
L2L1-500 19 PPM

HISTOGRAM FOR BI

CLASS INTERVAL = 1.2

MID CLASS CLASS
PPM %

<	2.00	8.45
	2.60	15.49
	3.80	16.90
	5.00	23.94
	6.20	1.41
	7.40	1.41
	8.60	0.00
	9.80	0.00
	11.00	2.82
	12.20	4.23
	13.40	4.23
	14.60	5.63
	15.80	2.82
	17.00	1.41
	18.20	1.41
	19.40	8.45
>	20.00	1.41



MIN-EN LABORATORIES LTD.

SPECIALISTS IN MINERAL ENVIRONMENTS

705 WEST 15TH STREET NORTH VANCOUVER, B.C. CANADA V7M 1T2

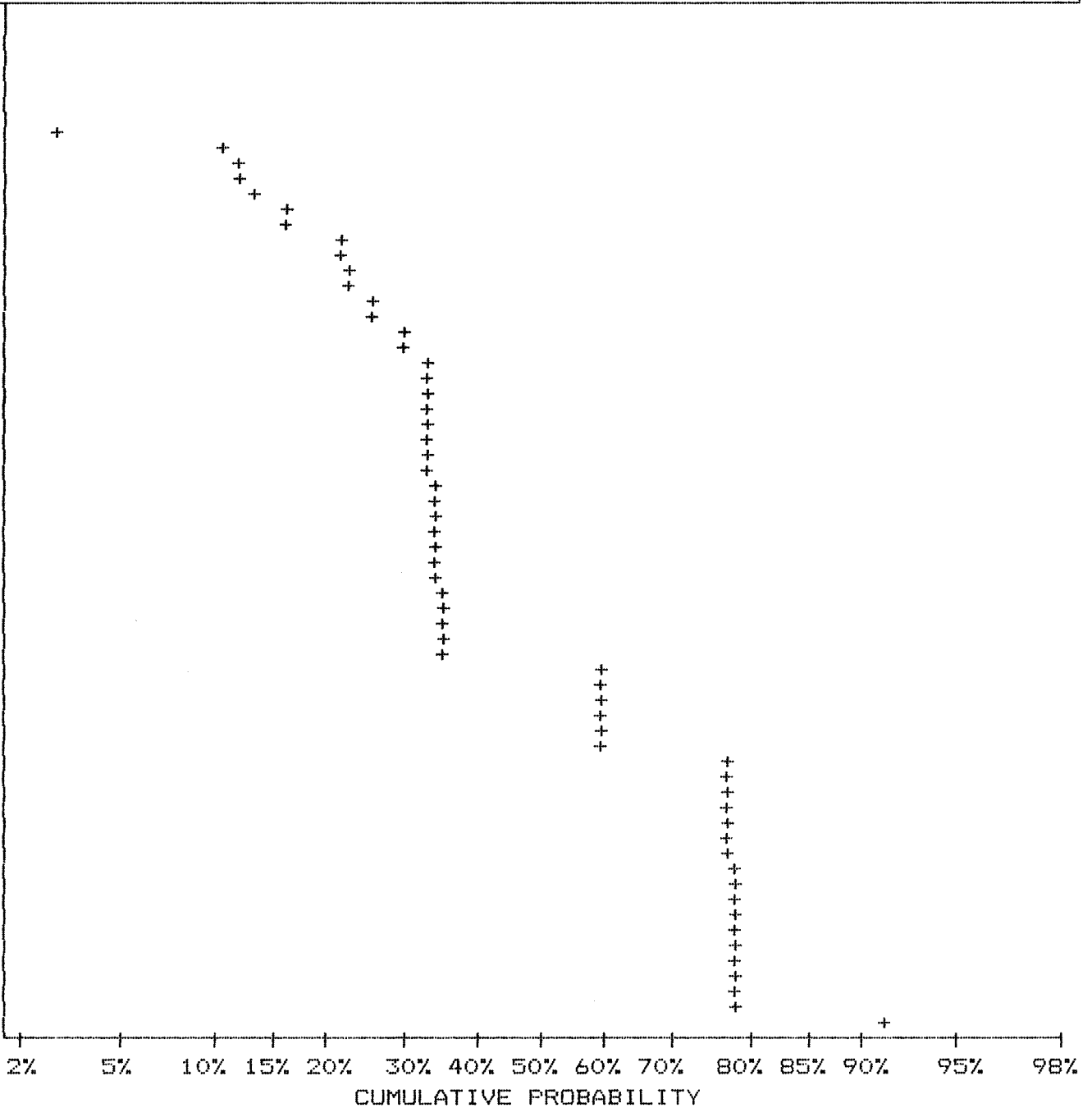
TELEX: 04-352828 PHONE: (604)980-5814 OR (604)988-4524

CUMMULATIVE PROBABILITY PLOT ON BI

COMPANY: TRIFCO MINERALS LTD.
 ATTN: R. TRIFAUX
 PROJECT: MARG/6
 FILE#: 4-680/4-850/5-416/6-779

DATE: OCTOBER 3/86
 SAMPLE TYPE: SOIL
 ANALYSIS TYPE: I.C.P.

UPPER LIMIT (PPM)	CUMMUL. FREQ. (%)
19.37	2.82
17.91	12.68
16.56	14.08
15.31	16.90
14.16	22.54
13.09	23.94
12.11	26.76
11.20	30.99
10.35	33.80
9.57	33.80
8.85	33.80
8.19	33.80
7.57	35.21
7.00	35.21
6.47	35.21
5.98	36.62
5.53	36.62
5.12	36.62
4.73	60.56
4.38	60.56
4.05	60.56
3.74	77.46
3.46	77.46
3.20	77.46
2.96	78.87
2.74	78.87
2.53	78.87
2.34	78.87
2.16	78.87
2.00	91.55



MIN-EN LABORATORIES LTD.

SPECIALISTS IN MINERAL ENVIRONMENTS

705 WEST 15TH STREET NORTH VANCOUVER, B.C. CANADA V7M 1T2

TELEX: 04-352828 PHONE: (604)980-5814 OR (604)988-4524

STATISTICAL SUMMARY ON PB

COMPANY: TRIFCO MINERALS LTD.
 ATTN: R. TRIFAUX
 PROJECT: MARG/6
 FILE#: 4-680/4-850/5-416/6-779

DATE: OCTOBER 3/86
 SAMPLE TYPE: SOIL
 ANALYSIS TYPE: I.C.P.

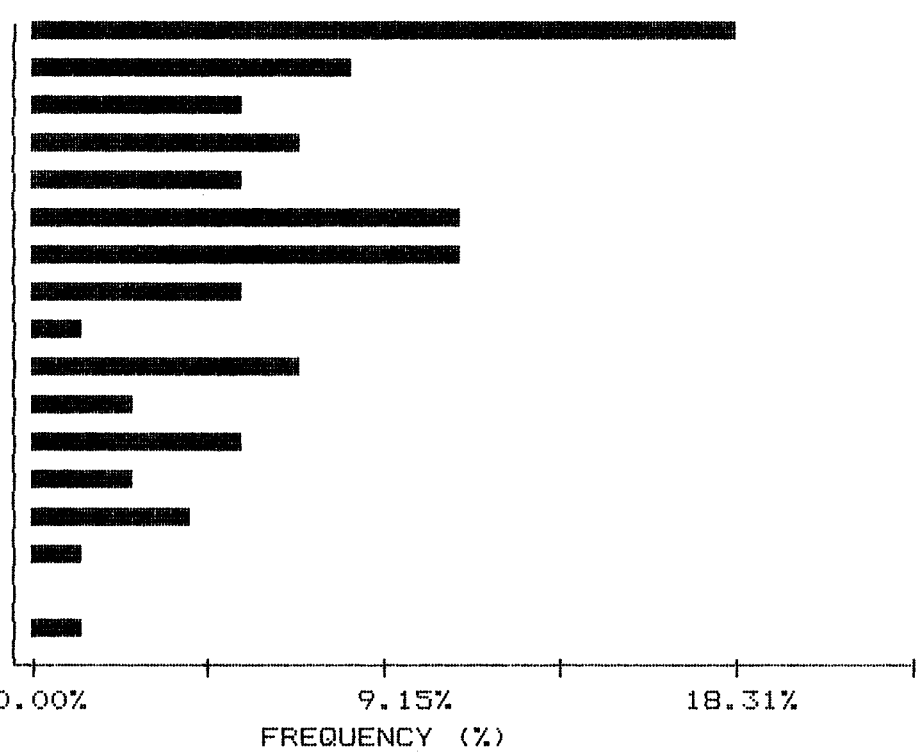
NUMBER OF SAMPLES: 71
 MAXIMUM VALUE: 70.00 PPM
 MINIMUM VALUE: 11.00 PPM
 MEAN: 37.52 PPM
 STD. DEVIATION: 13.70 PPM
 COEFF. OF VARIATION: .37

5 HIGHEST PB VALUES:
 MLD+100 20M 70 PPM
 MLB+400 66 PPM
 MLF+200 40M 62 PPM
 MLA+00 59 PPM
 MLC+100 59 PPM

HISTOGRAM FOR PB CLASS INTERVAL = 2.73

MID CLASS PPM	CLASS %
---------------	---------

< 25.00	18.31
26.37	8.45
29.10	5.63
31.83	7.04
34.56	5.63
37.29	11.27
40.02	11.27
42.75	5.63
45.48	1.41
48.21	7.04
50.94	2.82
53.67	5.63
56.40	2.82
59.13	4.23
61.86	1.41
64.59	0.00
> 66.00	1.41



FREQUENCY (%)

MIN-EN LABORATORIES LTD.

SPECIALISTS IN MINERAL ENVIRONMENTS

705 WEST 15TH STREET NORTH VANCOUVER, B.C. CANADA V7M 1T2

TELEX: 04-352828 PHONE: (604)980-5814 OR (604)988-4524

CUMMULATIVE PROBABILITY PLOT ON PB

COMPANY: TRIFCO MINERALS LTD.

ATTN: R. TRIFAUX

PROJECT: MARG/6

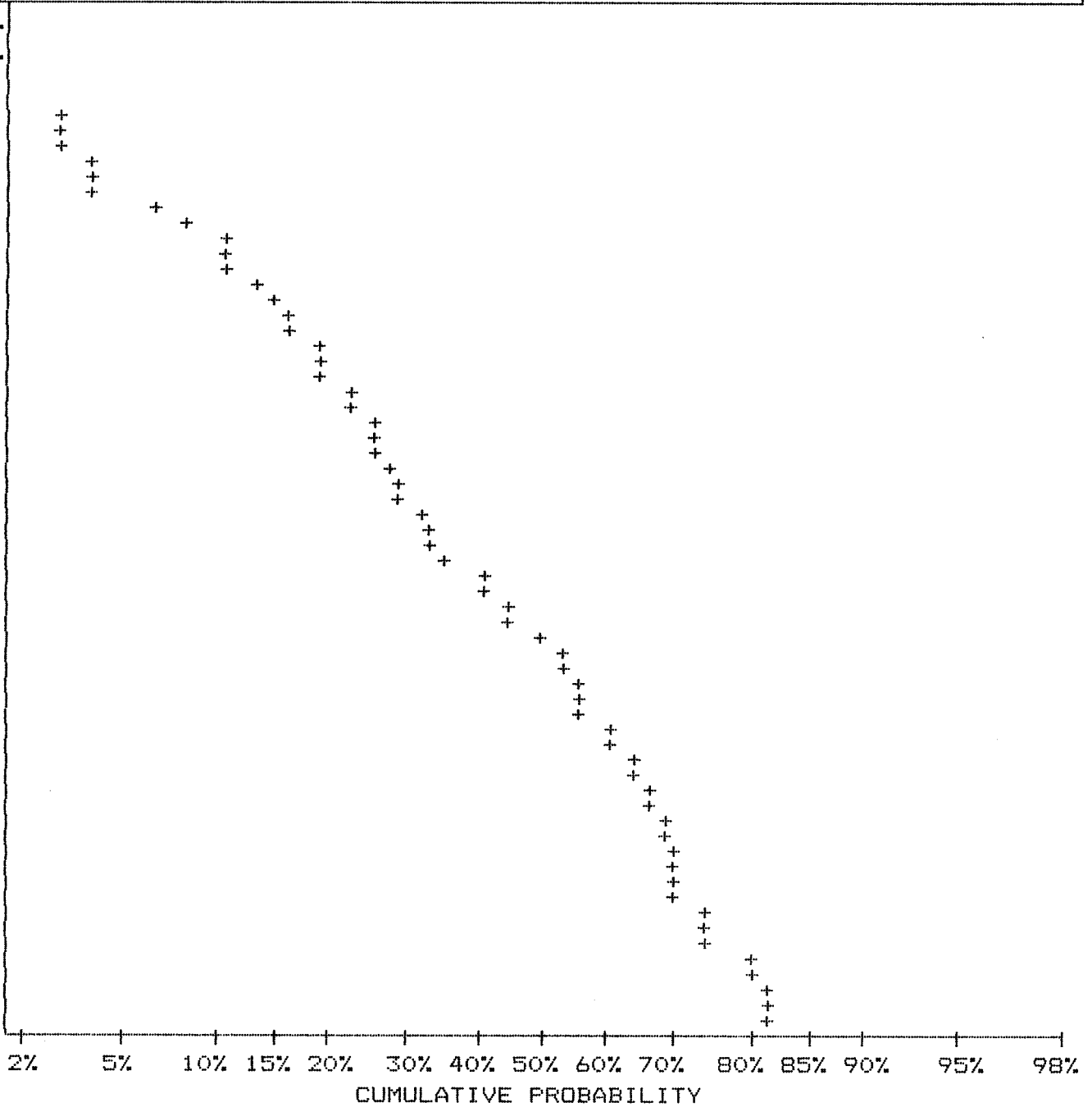
FILE#: 4-680/4-850/5-416/6-779

DATE: OCTOBER 3/86

SAMPLE TYPE: SOIL

ANALYSIS TYPE: I.C.P.

UPPER LIMIT (PPM)	CUMMUL. FREQ. (%)
63.67	2.82
61.65	4.23
59.70	4.23
57.80	8.45
55.97	11.27
54.20	14.08
52.47	16.90
50.80	19.72
49.20	19.72
47.63	23.94
46.13	26.76
44.65	28.17
43.25	29.58
41.88	33.80
40.55	36.62
39.25	42.25
38.03	45.07
36.80	54.93
35.65	56.34
34.50	56.34
33.42	61.97
32.35	64.79
31.32	67.61
30.33	69.01
29.37	70.42
28.45	70.42
27.55	74.65
26.67	80.28
25.82	81.69
25.00	81.69



MIN-EN LABORATORIES LTD.

SPECIALISTS IN MINERAL ENVIRONMENTS

705 WEST 15TH STREET NORTH VANCOUVER, B.C. CANADA V7M 1T2

TELEX: 04-352828 PHONE: (604)980-5814 OR (604)988-4524

STATISTICAL SUMMARY ON SB

COMPANY: TRIFCO MINERALS LTD.
ATTN: R. TRIFAUX
PROJECT: MARG/6
FILE#: 4-680/4-850/5-416/6-779

DATE: OCTOBER 3/86
SAMPLE TYPE: SOIL
ANALYSIS TYPE: I.C.P.

NUMBER OF SAMPLES: 71
MAXIMUM VALUE: 13.00 PPM
MINIMUM VALUE: 1.00 PPM
MEAN: 4.14 PPM
STD. DEVIATION: 2.87 PPM
COEFF. OF VARIATION: .69

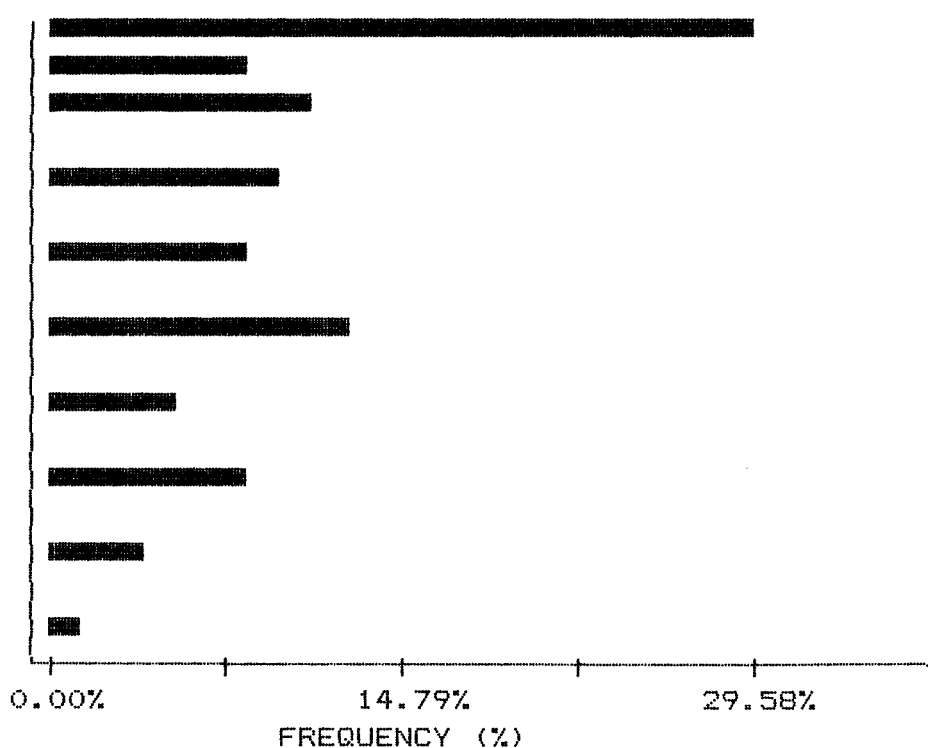
5 HIGHEST SB VALUES:
M-ND1 13 PPM
MLD+100 20M 10 PPM
L2L1-000 9 PPM
L2L1-250 9 PPM
L2L2-000 9 PPM

HISTOGRAM FOR SB

CLASS INTERVAL = .53

MID CLASS	CLASS
PPM	%

<	2.00	29.58
	2.26	8.45
	2.79	11.27
	3.32	0.00
	3.85	9.86
	4.38	0.00
	4.91	8.45
	5.44	0.00
	5.97	12.68
	6.50	0.00
	7.03	5.63
	7.56	0.00
	8.09	8.45
	8.62	0.00
	9.15	4.23
	9.68	0.00
>	10.00	1.41



MIN-EN LABORATORIES LTD.

SPECIALISTS IN MINERAL ENVIRONMENTS

705 WEST 15TH STREET NORTH VANCOUVER, B.C. CANADA V7M 1T2

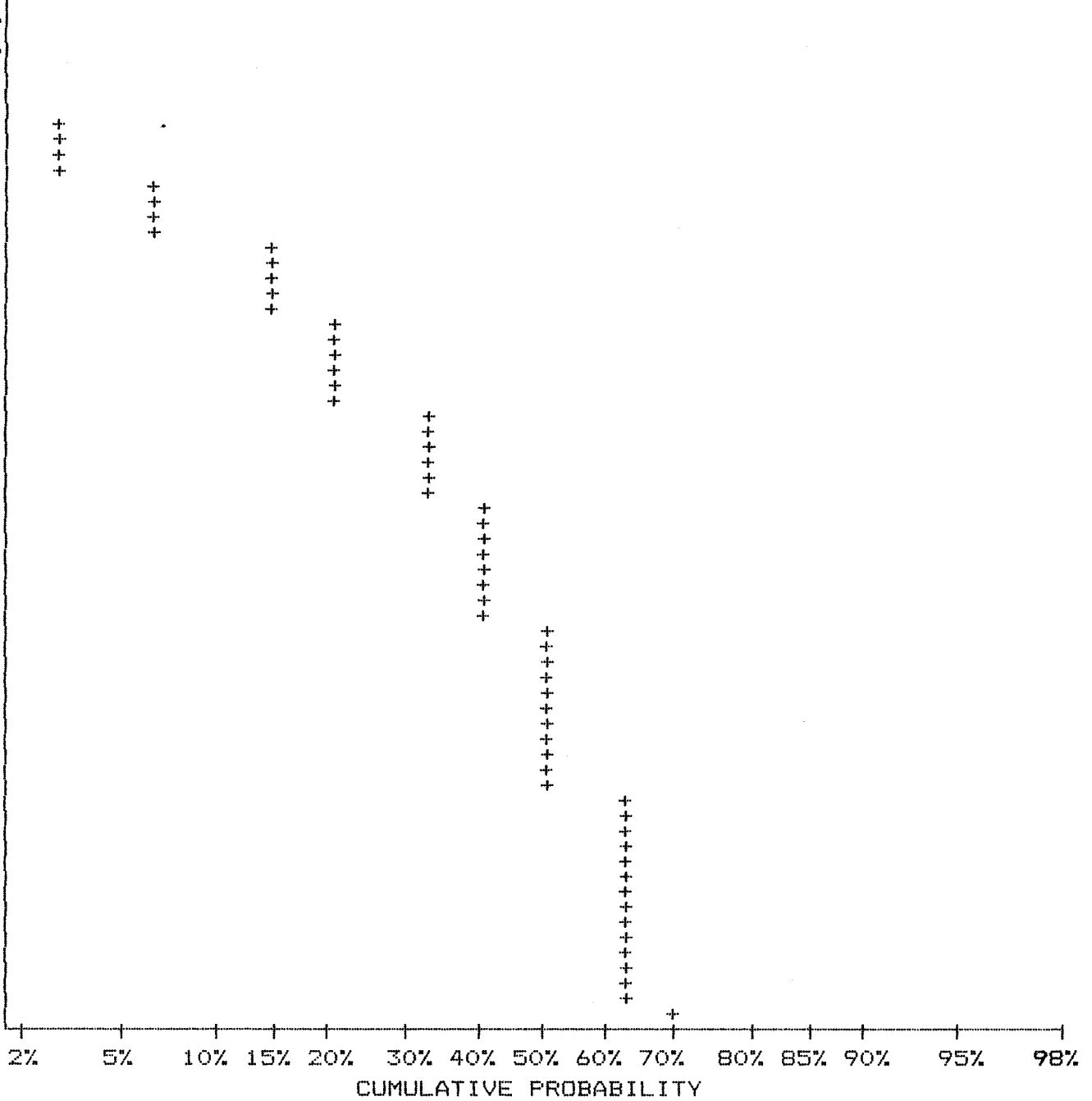
TELEX: 04-352828 PHONE: (604)980-5814 OR (604)988-4524

CUMMULATIVE PROBABILITY PLOT ON SB

COMPANY: TRIFCO MINERALS LTD.
ATTN: R. TRIFAUX
PROJECT: MARG/6
FILE#: 4-680/4-850/5-416/6-779

DATE: OCTOBER 3/86
SAMPLE TYPE: SOIL
ANALYSIS TYPE: I.C.P.

UPPER LIMIT (PPM)	CUMMUL. FREQ. (%)
9.93	2.82
9.40	2.82
8.89	7.04
8.41	7.04
7.96	15.49
7.53	15.49
7.13	15.49
6.75	21.13
6.38	21.13
6.04	21.13
5.72	33.80
5.41	33.80
5.12	33.80
4.84	42.25
4.58	42.25
4.34	42.25
4.10	42.25
3.88	52.11
3.67	52.11
3.48	52.11
3.29	52.11
3.11	52.11
2.94	63.38
2.79	63.38
2.64	63.38
2.49	63.38
2.36	63.38
2.23	63.38
2.11	63.38
2.00	70.42



MIN-EN LABORATORIES LTD.

SPECIALISTS IN MINERAL ENVIRONMENTS

705 WEST 15TH STREET NORTH VANCOUVER, B.C. CANADA V7M 1T2

TELEX: 04-352828 PHONE: (604)980-5814 OR (604)988-4524

STATISTICAL SUMMARY ON ZN

COMPANY: TRIFCO MINERALS LTD.
ATTN: R. TRIFAUX
PROJECT: MARG/6
FILE#: 4-680/4-850/5-416/6-779

DATE: OCTOBER 3/86
SAMPLE TYPE: SOIL
ANALYSIS TYPE: I.C.P.

NUMBER OF SAMPLES: 71
MAXIMUM VALUE: 490.00 PPM
MINIMUM VALUE: 20.00 PPM
MEAN: 70.45 PPM
STD. DEVIATION: 54.82 PPM
COEFF. OF VARIATION: .78

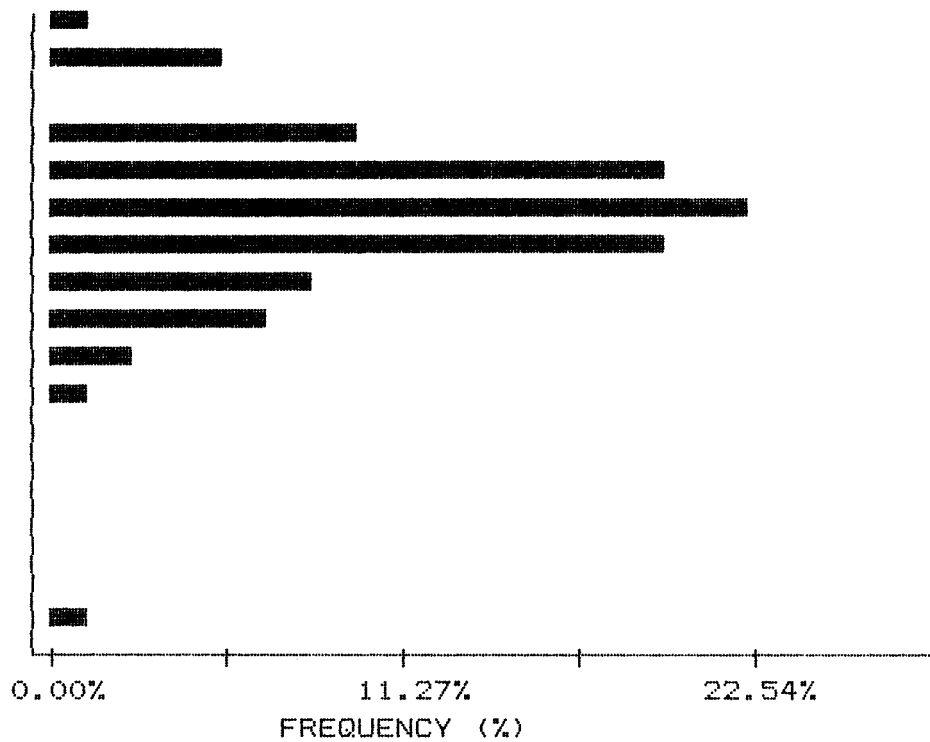
5 HIGHEST ZN VALUES:
MARG-ND3 490 PPM
M-ND1 161 PPM
L2L1-250 110 PPM
MLC+100 101 PPM
ML4-000 99 PPM

HISTOGRAM FOR ZN

CLASS INTERVAL = 9.4

MID CLASS CLASS
PPM %

<	20.00	1.41
	24.70	5.63
	34.10	0.00
	43.50	9.86
	52.90	19.72
	62.30	22.54
	71.70	19.72
	81.10	8.45
	90.50	7.04
	99.90	2.82
	109.30	1.41
	118.70	0.00
	128.10	0.00
	137.50	0.00
	146.90	0.00
	156.30	0.00
>	161.00	1.41



MIN-EN LABORATORIES LTD.

SPECIALISTS IN MINERAL ENVIRONMENTS

705 WEST 15TH STREET NORTH VANCOUVER, B.C. CANADA V7M 1T2

TELEX: 04-352828 PHONE: (604)980-5814 OR (604)988-4524

CUMMULATIVE PROBABILITY PLOT ON ZN

COMPANY: TRIFCO MINERALS LTD.

DATE: OCTOBER 3/86

ATTN: R. TRIFAUX

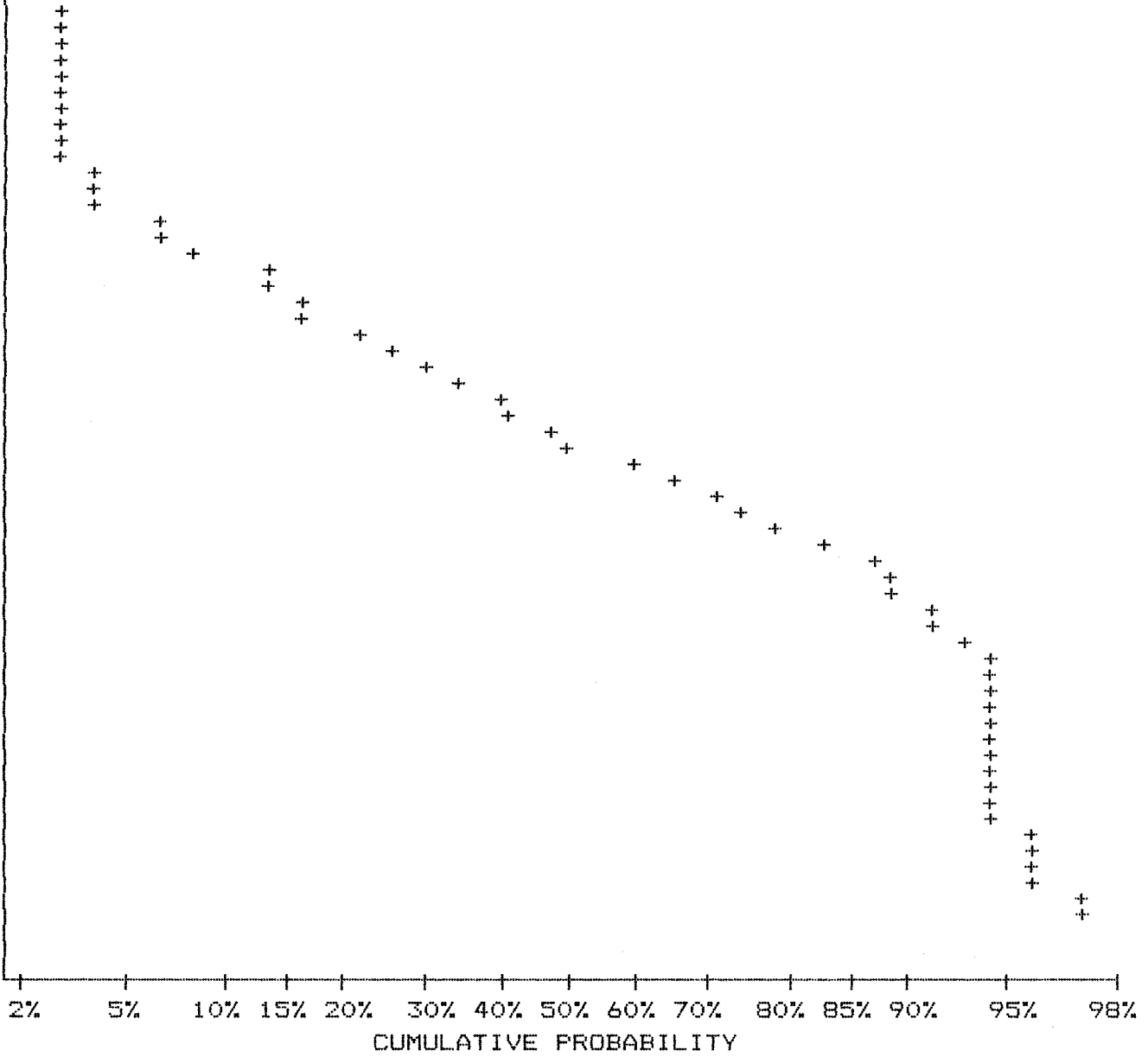
SAMPLE TYPE: SOIL

PROJECT: MARG/6

ANALYSIS TYPE: I.C.P.

FILE#: 4-680/4-850/5-416/6-779

UPPER LIMIT (PPM)	CUMMUL. FREQ. (%)
148.26	2.82
138.36	2.82
129.14	2.82
120.52	2.82
112.46	2.82
104.96	4.23
97.96	7.04
91.42	8.45
85.32	14.08
79.62	16.90
74.30	26.76
69.34	35.21
64.72	42.25
60.40	50.70
56.36	66.20
52.60	74.65
49.10	83.10
45.82	88.73
42.76	91.55
39.90	92.96
37.24	94.37
34.76	94.37
32.44	94.37
30.28	94.37
28.26	94.37
26.36	95.77
24.60	95.77
22.96	97.18
21.44	98.59
20.00	98.59



Geochemistry (continued)

Strong correlations from the analyses by I.C.P. by Min-En Laboratories Ltd.

Element groupings

Ag - As	.484				
Ag - Bi	.734	Ag	As	Bi	Sb
Ag - Sb	.488				
As - Bi	.558				
As - Sb	.658	As	Bi	Sb	Zn
As - Zn	.472				
Bi - Sb	.701	Bi	Sb		
Pb - Sb	.312	Pb	Sb		

Strong correlations defining 4 groups of inter-related elements

All the element groupings represent all the components analyzed as characteristic trace elements for the gold signature.

Geochemistry (continued)

Soil Analyses I.C.P.				
Elements	Samples within Detection Limits	Mean ppm	S D	Remarks
AG	71	.65	.39	Five highest values 1.9 1.4 1.4 1.3 1.3 ppm
AS	71	10.28	9.96	Five highest values 39 35 30 29 29 ppm
BI	71	7.86	6.28	Five highest values 24 20 19 19 19 ppm
PB	71	37.52	13.70	Five highest values 70 66 62 59 59 ppm
SB	71	4.14	2.87	Five highest values 13 10 9 9 9 ppm
ZN	71	70.45	54.82	Five highest values 490 161 110 101 99 ppm

All the values above are anomalous, are above background and threshold.

COMPANY: TRIFCO MINERALS LTD.

MIN-EN LABS ICP REPORT

(ACT:GEO27) PAGE 1 OF 1

PROJECT NO: MARG 1-L2-1986-87

705 WEST 15TH ST., NORTH VANCOUVER, B.C. V7 2

FILE NO: 6-7795/P1+2

ATTENTION: R. TRIFAUX

(604)980-5814 OR (604)988-4524

* TYPE SOIL GEOCHEM-7 *

DATE: SEPT 22, 1986

(VALUES IN PPM)	AG	AS	BI	PB	SB	ZN	AU-PPB
MLA+00	.3	18	4	59	7	79	10
MLA+100	.4	1	2	49	4	67	5
MLA+200	.3	4	4	58	6	64	5
MLA+300	.4	1	2	41	2	64	20
MLA+400	.3	1	2	31	1	50	10
MLB+00	.2	1	2	51	5	60	5
MLB+100	.4	8	5	49	4	55	5
MLB+200	.5	4	5	57	6	85	10
MLB+300	.4	1	4	37	3	68	5
MLB+400	.4	10	5	66	6	91	20
MLC+00	.4	6	5	40	2	74	5
MLC+100	.5	12	4	59	3	101	5
MLC+200	.6	9	5	33	4	54	10
MLC+300 20M	.5	8	5	49	2	60	30
MLC+400 40M	.3	1	4	32	1	68	10
MLD+00	.4	2	5	55	3	78	5
MLD+100 20M	.6	29	5	70	10	90	5
MLD+200	.4	13	5	55	4	71	10
MLD+300	.2	1	2	38	2	53	10
MLD+400 20M	1.9	18	5	57	5	58	5
MLE+00	.4	12	4	47	4	60	5
MLE+100	.4	1	2	11	1	23	10
MLE+200	.2	6	5	53	4	60	5
MLE+300	.6	1	4	42	1	75	5
MLE+400	.7	4	4	40	1	61	5
MLF+00	.1	1	4	37	3	56	20
MLF+100	.3	1	4	40	3	39	5
MLF+200 40M	.4	1	2	62	4	58	10
MLF+300	.4	1	2	20	1	43	5
MLF+400	.5	1	2	11	1	20	5
MLG +00	.1	3	5	45	3	69	5
MLG +100	.4	1	5	47	1	72	5
MLG +200 40M	.6	1	5	38	1	59	10
MLG +300 40M	.3	11	5	34	1	55	5
MLG +400 40M	.5	1	5	23	1	48	5
MLH +00	.2	1	2	33	1	52	5
MLH +100	.2	1	3	39	1	70	5
MLH +200 40M	.9	1	4	16	1	48	5
MLH +300 40M	.2	17	5	54	2	68	5
MLH +400 40M	.8	1	4	38	1	56	5

COMPANY: TRIFCO MINERALS
PROJECT NO: M-L-NO.1-1986
ATTENTION: R. TRIFAU
(PPM) I-ML-MIN
-86

MIM-EN LABS ICP REPORT
705 WEST 15TH ST., NORTH VANCOUVER, B.C. V7N 1T2
(604)980-5814 OR (604)988-4524

(ACT:GEO27) PAGE 1 OF 1
FILE NO: 6-447R
* PULP GEOCHEM * DATE: JULY 22, 1986

CO 21
LI 35
NO 2
NI 251
TH 1

U 1

COMPANY: TRIFCO MINERALS

MIN-EN LABS ICP REPORT

(ACT:LI26) PAGE 1 OF 1

PROJECT NO: M-L-NO.1-1986

705 WEST 15TH ST., NORTH VANCOUVER, B.C. V7M 1T2

FILE NO: 6-447R

ATTENTION: R. TRIFAUX

(604)980-5814 OR (604)988-4524

* PULP GEOCHEM * DATE: JULY 22, 1986

(Z) 1-ML-MIN

-86

AL203 13.58

BA .015

CA0 9.25

CR203 .16

FE203 11.11

K20 .14

MND2 .24

MA20 .89

NB .01

TI02 1.23

W .006

ZR .007

*Rocks Mergo claim
grey rocks with sulphide*

MIN-EN Laboratories Ltd.

705 WEST 15th STREET,
NORTH VANCOUVER, B.C., CANADA V7M 1T2
TELEPHONE (604) 980-5814

ANALYTICAL REPORT

Project Date of report **Oct 16, 1986.**

File No. **6-779R** Date samples received

Samples submitted by:

Company: **Trifco Minerals**

Report on: **40 soils** Geochem samples

..... Assay samples

Copies sent to:

1. **Trifco Minerals, Coquitlam, B.C.**
2.
3.

Samples: Sieved to mesh Ground to mesh

Prepared samples stored discarded

rejects stored discarded

Methods of analysis: **12 element trace ICP. Au-wet.**

Remarks:

PROJECT NO:

705 WEST 15TH ST., NORTH VANCOUVER, B.C. V7M 1T2

FILE NO: 6-779R/P1+2

ATTENTION: R.TRIFAUX

(604)980-5814 OR (604)988-4524

* TYPE SOIL GEOCHEM * DATE: OCT 16, 1986

(VALUES IN PPM)	AG	AS	BI	CD	CO	CU	MO	NI	PB	SB	V	ZN
MLA+00	.3	18	4	4.1	9	33	7	51	59	7	30.2	79
MLA+100	.4	1	2	2.6	8	17	6	43	49	4	27.5	67
MLA+200	.3	4	4	3.7	6	19	5	45	58	6	30.2	64
MLA+300	.4	1	2	2.9	7	16	4	45	41	2	23.0	64
MLA+400	.3	1	2	3.1	4	13	3	17	31	1	24.2	50
MLB+00	.2	1	2	2.1	6	21	5	52	51	5	30.2	60
MLB+100	.4	8	5	3.9	5	17	6	32	49	4	35.3	55
MLB+200	.5	4	5	4.6	9	36	7	66	57	6	34.0	85
MLB+300	.4	1	4	3.9	6	16	4	36	37	3	30.8	68
MLB+400	.4	10	5	7.9	6	19	6	43	66	6	26.0	91
MLC+00	.4	6	5	4.6	8	26	5	52	40	2	29.3	74
MLC+100	.5	12	4	5.3	13	42	6	115	59	3	40.8	101
MLC+200	.6	9	5	2.9	5	15	5	23	33	4	32.5	54
MLC+300 20M	.5	8	5	3.5	8	29	3	35	49	2	21.3	60
MLC+400 40M	.3	1	4	2.7	5	21	2	24	32	1	24.1	68
MLD+00	.4	2	5	4.6	7	24	6	37	55	3	35.9	78
MLD+100 20M	.6	29	5	5.8	8	38	8	39	70	10	30.0	90
MLD+200	.4	13	5	3.3	9	23	4	44	55	4	25.4	71
MLD+300	.2	1	2	2.6	4	13	2	27	38	2	22.6	53
MLD+400 20M	1.9	18	5	5.5	7	48	5	40	57	5	27.7	58
MLE+00	.4	12	4	3.8	7	18	5	35	47	4	31.1	60
MLE+100	.4	1	2	.4	2	15	1	5	11	1	21.3	23
MLE+200	.2	6	5	4.0	8	11	5	36	53	4	24.9	60
MLE+300	.6	1	4	3.8	9	33	4	45	42	1	26.1	75
MLE+400	.7	4	4	2.8	7	43	3	29	40	1	30.8	61
MLF+00	.1	1	4	3.5	7	19	5	35	37	3	26.5	56
MLF+100	.3	1	4	3.3	4	20	4	16	40	3	33.3	39
MLF+200 40M	.4	1	2	3.6	8	21	5	36	62	4	30.2	58
MLF+300	.4	1	2	1.7	4	17	2	8	20	1	19.5	43
MLF+400	.5	1	2	.6	2	18	1	3	11	1	16.2	20
MLG+00	.1	3	5	3.2	7	29	7	42	45	3	37.4	69
MLG+100	.4	1	5	3.5	7	28	3	41	47	1	19.2	72
MLG+200 40M	.6	1	5	3.1	7	36	2	30	38	1	27.4	59
MLG+300 40M	.3	11	5	3.8	6	34	3	21	34	1	36.6	55
MLG+400 40M	.5	1	5	2.7	5	32	2	13	23	1	30.5	48
MLH+00	.2	1	2	2.3	5	20	4	26	33	1	26.1	52
MLH+100	.2	1	3	2.7	6	23	3	25	39	1	27.7	70
MLH+200 40M	.9	1	4	2.8	5	36	1	25	16	1	28.7	48
MLH+300 40M	.2	17	5	2.4	5	27	4	20	54	2	28.0	68
MLH+400 40M	.8	1	4	4.9	7	31	3	19	38	1	22.8	56

PROJECT NO:

705 WEST 15TH ST., NORTH VANCOUVER, B.C. V7M 1T2

FILE NO: 6-779R/P1+2

ATTENTION: R. TRIFAUX

(604)980-5814 OR (604)988-4524

* TYPE SOIL GEOCHEM * DATE: OCT 16, 1986

(VALUES IN PPM)	AU-PPR
MLA+00	10
MLA+100	5
MLA+200	5
MLA+300	20
MLA+400	10
MLB+00	5
MLB+100	5
MLB+200	10
MLB+300	5
MLB+400	20
MLC+00	5
MLC+100	5
MLC+200	10
MLC+300 20M	30
MLC+400 40M	10
MLD+00	5
MLD+100 20M	5
MLD+200	10
MLD+300	10
MLD+400 20M	5
MLE+00	5
MLE+100	10
MLE+200	5
MLE+300	5
MLE+400	5
MLF+00	20
MLF+100	5
MLF+200 40M	10
MLF+300	5
MLF+400	5
MLG +00	5
MLG +100	5
MLG +200 40M	10
MLG +300 40M	5
MLG +400 40M	5
MLH +00	5
MLH +100	5
MLH +200 40M	5
MLH +300 40M	5
MLH +400 40M	5

MIN-EN Laboratories Ltd.

705 WEST 15th STREET,
NORTH VANCOUVER, B.C., CANADA V7M 1T2
TELEPHONE (604) 980-5814

ANALYTICAL REPORT

Project **Marg 1-L2-1986-87** Date of report **Sept 22/86.**

File No. **6-779** Date samples received **Sept 12/86.**

Samples submitted by: **R. Trifaux**

Company: **Trifco Minerals**

Report on: **40 soils** Geochem samples

Assay samples

Copies sent to:

1. **Trifco Minerals, Coquitlam, B.C.**
2.
3.

Samples: Sieved to mesh **-80** Ground to mesh

Prepared samples stored discarded

rejects stored discarded

Methods of analysis: **6 element trace ICP. Au-wet.**

Remarks:

MIN-EN Laboratories Ltd.

705 WEST 15th STREET,
NORTH VANCOUVER, B.C., CANADA V7M 1T2
TELEPHONE (604) 980-5814

ANALYTICAL REPORT

Project **ML-No.1-1986** Date of report **July 11, 1986.**

File No. **6-447** Date samples received **July 8, 1986.**

Samples submitted by:

Company: **Trifco Minerals**

Report on: Geochem samples

..... **1** Assay samples

Copies sent to:

1. **R.Trifaux, Coquitlam, B.C.**

2.

3.

Samples: Sieved to mesh Ground to mesh **-100**

Prepared samples stored discarded

rejects stored discarded

Methods of analysis: **Pb,Zn,Ag-acid digestion-chemical analysis. Au-fire.**

**Cu-nitric,perchloric digestion.A.A., Hg-flameless A.A., Sb-aqua regia.AA
As-Spectrophotometric.**

Remarks:

MIN-EN LABORATORIES LTD.

Specialists in Mineral Environments

705 West 15th Street North Vancouver, B.C. Canada V7M 1T2

44

PHONE: (604) 980-5814 OR (604) 988-4524

TELEX: 04-352828

Certificate of ASSAY

Company: TRIFCO MINERALS
Project: ML-ND.1-1986
Attention: MR. R. TRIFAUX

File: 6-447
Date: JULY 11/86
Type: ROCK ASSAY

We hereby certify the following results for samples submitted.

Sample Number	PB %	ZN %	AG G/TONNE	AG OZ/TON	AU G/TONNE	AU OZ/TON
1-ML-MIN-86	.01	.01	1.4	0.04	.01	0.001

Certified by

MIN-EN LABORATORIES LTD.

MIN-EN LABORATORIES LTD.

Specialists in Mineral Environments

705 West 15th Street North Vancouver, B.C. Canada V7M 1T2

TELE: (604) 980-5814 OR (604) 988-4524

TELEX: 04-352828

Certificate of GEOCHEM

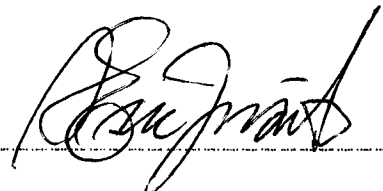
Company: TRIFCO MINERALS
Project: ML-NO. 1-1986
Attention: MR. R. TRIFAUX

File: 6-447
Date: JULY 11/86
Type: ROCK GEOCHEM

We hereby certify the following results for samples submitted.

Sample Number	CU PPM	HG PPB	AS PPM	SB PPM
I-ML-MIN-86	192	65	12	5

Certified by



MIN-EN LABORATORIES LTD.

46

COMPANY: TRIFCO MINERALS

MIN-EN LABS ICP REPORT

(ACT:GEO27) PAGE 1 OF 1

PROJECT NO: M-L-NO.1-1986

705 WES. 15TH ST., NORTH VANCOUVER, B.C. V7M 1T2

FILE NO: 6-447R

ATTENTION: R. TRIFAUX

(604)980-5814 OR (604)988-4524

* PULP GEOCHEM * DATE: JULY 22, 1986

(PPM) I-ML-MIN

-86

CO 21

LI 35

NO 2

NI 251

TH 1

U 1

COMPANY: TRIFCO MINERALS

MIN-EN LABS ICP REPORT

(ACT:LI26) PAGE 1 OF 1

PROJECT NO: M-L-ND.1-1986

705 WES: 15TH ST., NORTH VANCOUVER, B.C. V7M 1T2

FILE NO: 6-447R

ATTENTION: R. TRIFAUX

(604)980-5814 OR (604)988-4524

* PULP GEOCHEM * DATE: JULY 22, 1986

(%) 1-ML-MIN

-86

AL2O3 13.56
BA .015
CAO 9.25
CR2O3 .16
FE2O3 11.11

K2O .14
MNO2 .24
NA2O .89
NB .01
TI02 1.23

N .006
IR .007

MIN-EN Laboratories Ltd.

705 WEST 15th STREET,
NORTH VANCOUVER, B.C., CANADA V7M 1T2
TELEPHONE (604) 980-5814

ANALYTICAL REPORT

Project **M-L No.1-1986** Date of report **July 22, 1986.**

File No. **6-447R** Date samples received **July 16/86.**

Samples submitted by:

Company: **Trifco Minerals**

Report on: Geochem samples

..... **1** Assay samples

Copies sent to:

1. **R. Trifaux, Coquitlam, B.C.**
2.
3.

Samples: Sieved to mesh Ground to mesh

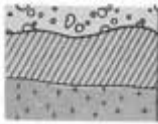
Prepared samples stored discarded

rejects stored discarded

Methods of analysis: **12 major ICP. 6 element trace ICP.**

Remarks:

Bondar-Clegg & Company Ltd.
130 Pemberton Ave.
North Vancouver, B.C.
Canada V7P 2R5
Phone: (604) 985-0681
Telex: 04-352667



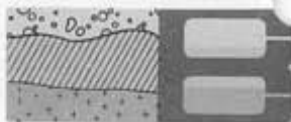
BONDAR-CLEGG

Geochemical
Lab Report

MR. R. TRIFAUX
308 - 751 CLARKE ROAD
COQUITLAM, B.C.
V3J 3Y3

+ + + + +

Bondar-Clegg & Company Ltd.
 130 Pemberton Ave.
 North Vancouver, B.C.
 Canada V7P 2R5
 Phone: (604) 985-0681
 Telex: 04-352667



BONDAR-CLEGG

**Geochemical
 Lab Report**

REPORT: 126-2433 (COMPLETE)

REFERENCE INFO:

CLIENT: MR. R. TRIFAUX
 PROJECT: L-ML-TRIFCO

SUBMITTED BY: R TRIFAUX
 DATE PRINTED: 14-JUL-86

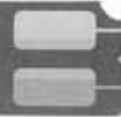
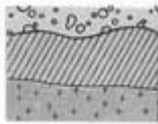
ORDER	ELEMENT	NUMBER OF ANALYSES	LOWER DETECTION LIMIT	EXTRACTION	METHOD
1	As Arsenic	1	2 PPM	NITRIC PERCHLOR DIG	Colourimetric
2	Hg Mercury	1	5 PPB	HNO3-HCL HOT EXTR	Cold Vapour AA
3	Te Tellurium	1	0.2 PPM	HBr-Br2-MIBK	Atomic Absorption
4	Au Gold - Fire Assay	1	5 PPB	FIRE-ASSAY	Fire Assay AA

SAMPLE TYPES	NUMBER	SIZE FRACTIONS	NUMBER	SAMPLE PREPARATIONS	NUMBER
R ROCK OR BED ROCK	1	2 -150	1	ASSAY PREP	1

REPORT COPIES TO: MR. R. TRIFAUX

INVOICE TO: MR. R. TRIFAUX

Bondar-Clegg & Company Ltd.
130 Pemberton Ave.
North Vancouver, B.C.
Canada V7P 2R5
Phone: (604) 985-0681
Telex: 04-352667



BONDAR-CLEGG

Geochemical
Lab Report

REPORT: 126-2433

PROJECT: I-ML-TRIPCO PAGE 1

SAMPLE NUMBER	ELEMENT UNITS	As PPM	Hg PPB	Ie PPM	Au PPB
---------------	---------------	--------	--------	--------	--------

R2 I-ML-BON-86		2	<5	<0.2	<5
----------------	--	---	----	------	----

--	--	--	--	--	--

--	--	--	--	--	--

--	--	--	--	--	--

--	--	--	--	--	--

--	--	--	--	--	--

--	--	--	--	--	--

--	--	--	--	--	--

Costs Summary

<u>Geochemistry</u>		<u>Total</u>
1. <u>R. Trifaux Costs</u>		
Time. 28.5hrsx20.00 =	\$ 570.00	
Mileage. 380kmsx0.25x20% =	19.00	
Meals on sites. 17x7.50 =	127.50	
<u>Samples Transportation</u>		
bagging.tests for rocks(HCL)		
Magnetism.fluorite.preparation		
24hrsx20.00	480.00	

	\$1,196.50	\$1,196.50
	=====	=====
2. <u>A. Fardal costs Invoices dated</u>		
Invoice no.14304. stakes,ribbons,etc	\$ 41.35	
Time. 22.5hrsx\$10.00 =	225.00	
Mileage. 256x0.25 =	64.00	

Sub total	\$ 330.25	

3. <u>Don Brown miller</u>		
Time. 17.5hrsx7.50 =	131.25	

Total Fardal & Brownmiller	\$ 461.50	\$ 461.50
	=====	=====
4. <u>Min.En Laboratories. Vancouver</u>		
Invoice no. 1896B. Report no.6 447R	\$ 15.00	
Invoice no. 1837B. Report no.6 447R	41.75	
Invoice no. 2418B. Report no.6 779S	414.00	
Transportation to lab, classification		
P. order. Rock analyses for samples		
to be sent. Plastic bags. Kraft bags.		
Elastic bands. Time. Car.	115.00	

	\$ 585.75	\$ 585.75
	=====	=====
5. <u>Bondar-Clegg Laboratories</u>		
Invoice no. 24029. Report 426-2433R	\$ 23.75	
Invoice no. 24071. Report 26-2433R	20.50	
Transportation, order, time.	25.00	

	\$ 69.25	\$ 69.25
	=====	=====

Summary of Costs (continued)

Miscellaneous Expenses

A Stakes, ribbons, paints, nails, transportation of items in the field.	\$ 55.00
 B Lodging.	 486.00
 C Report	
Draft. Diary.	770.00
Sketches, maps, histogram, etc.	250.00
Typing, covers, computer.	290.00
Greyhound cost for transportation of samples	10.04
Meals (in Quesnel)	65.00
Stationary, Diaries (books)	
Miscellaneous	75.46
TOTAL	<u>\$2,001.50</u>

Cost Summary (continued)

Total Geochemistry

Item 1	R. Trifaux costs		\$1,196.50
Item 2	A. Fardal costs		
Item 3	D. Brownmiller		461.50
Item 4	Min.En Laboratories Ltd.		585.75
Item 5	Bondar Clegg Lab.		69.25
Item 6	Computer services. Interpretations by R. Trifaux		170.00
Item 7	Miscellaneous Expenses		2,001.50

			\$4,484.50

Geology

	Time. Rene Trifaux. 12hx20	\$240.00	
	Sketches. Locations.		
	Sampling. Research.	130.00	
	Photographs.	16.00	
	Miscellaneous exp. Ribbons, tools, stakes.	34.00	

Total Geology		420.00	\$ 420.00
		=====	=====

Recap of Expenses

	Geochemistry total		\$4,484.50
	Geology total		420.00
	Trip 2 ways Quesnel		-----
			\$4,904.50
cheque Trifco 099. recording of works in Quesnel office			255.79

			\$5,160.29
			=====

Costs of Rene Trifaux

<u>Date</u> <u>1986</u>	<u>Brief Description</u>	<u>Time</u>	<u>Mileage</u>	<u>Meals</u>
06-06	Research for new outcrops. Analyses of gravel in the Road cuts for mica-schists	3	20	1
07-06	Mica-schists formations. Analyses of micas and nature of rocks. Sampling.	2	20	1
08-06	Breaking rocks and boulders in the mica-schists. Found biotite, muscovite, phyllite?	2.5	20	1
09-06	Breaking rocks and boulders in the mica-schists. Found micaceous green bodies.	2	20	1
10-06	Research on the West of line 2N. Walked for 2km on the cut looking for outcrops and boulders found more pyrites to the North of the claims.	2.5	20	1
11-06	Discovery of grey formation with pyrites and micas.	2	20	1
12-06	Returned to the grey formation and took more samples. Galina has been detected in some places.	2	20	1
13-06	Returned to the grey rock formation. Breaking rock north of the place near Phyllites	2	20	1
16-06	Returned to the new outcrop. Went in to valley down to the creek. Searching for new outrops South. Found new types of rocks.	3	20	1
17-06	Returned to new type of rock formation. Observation of mica flakes in all the formations. Digging around outcrop.	2.5	20	1
18-06	Research on Louise 2 claims. Found numerous boulders with deep hydrothermal alterations. Copper coloured.	1.5	20	
20-06	Sample taken at the trust fault with alterations remnant of chalcopyrites.	4	20	1
21-06	Research for more outcrops on the claims to have an idea of the overall underlying.	4	20	1

Costs of Rene Trifaux (continued)

Date 1986	Brief Description	Time	Mileage	Meals
22-06	Returned to the Phyllites and schists formation, went up into the creek looking for new outcrops on the slopes going to the Sovereign creek.	2.5	20	1
23-06	New samples-rocks broken for new samples. 1 pan of gravel from creek in Margo claim for precious metals. Went down to Sovereign Creek and see type of rock in the flat, on the slopes and in the creek.	1.5	20	
24-06	Met with Mr. Maurice Cunning from the pulp mill. Talc is in demand. Took new samples on the grey rock formation and the phyllites deeper in the formation, digging to go deeper.	3	20	1
25-06	Location of new geochem survey with Arne distances between lines and Pits. Also samples to be sent to companies by bus. Bought the stakes myself in Quesnel.	2.5	20	1
26-06	4 hrs of Margo & Louise claims to assess the work areas, locations, results. One last trip in the bus for new map in the North, to the end of the gravel pit. Review of mica scists and work to be done.	4	20	1
27-06	Took more samples at the Trust fault, some with chalcopyrites and alterations more samples as the phyllites.	3	20	1
Sub totals		49.5	380	17

49.5 hrs x \$20.00	\$ 990.00
380 kms x 0.25 x 0.20	19.00
17 meals x \$7.50	127.50
TOTAL	\$1,136.50

Costs of Arne Fardal

Date 1986	Brief Description	Time hrs	Amount \$
07-21	Plotting geochem survey. Stakes. Ribbons lines spaced at 100m.	7	70.00
07-22	Plotting geochem survey. 5 holes in each line at 100m apart.	5	50.00
07-25	Digging. Collecting. Samples. Samples numbered from MLA+00 +400 to MLH00+400	10.5	105.00
Sub total		22.5	225.00
Mileage			64.00
TOTAL			\$289.00

Costs of Brownmiller

Date 1986	Brief Description	Time hrs	Amount \$
07-21	Plotting geochem survey. Stakes, Ribbons. Lines spaced at 100m.	7	52.50
07-22	Plotting geochem survey. 5 holes in each line at 100m apart.		
07-25	Digging. collecting samples. Samples numbered from MLA+00 to MLH+400.	10.5	78.75
TOTALS		17.5	131.25

STATEMENT OF QUALIFICATIONS

EDUCATION

1. Tamines School of Mines, Belgium. 2 years - diploma
2. Chatelineau School of Mines, Belgium. 2 years - diploma
3. University of Charleroi, Hainaut, Belgium. 1 year mining, geology, mining technologies, reports. 1 certificate

The copies of diplomas and certificates have been presented to the Cariboo Mining Division with my 1977-1978 statement of works in Quesnel, Cariboo.

4. I passed successfully the test of rocks and mineral identification with a mining engineer from the Department of Mines in 1978, in Robson Square, Vancouver.
5. Cost accounting (2 years) with McMaster University in Ontario.

EXPERIENCE

I have extensive experience in exploration and mining from Zaire (previously Belgian Congo) and from Ruanda - Burundi in Central Africa.

1. "La Compagnie Des Grands Lacs Africains" Brussels from Belgium. Minerals mined were cassiterite, columbite, gold and increase of reserves by exploration of benches in the creeks.
2. "La Compagnie Mirudi" affiliated company of the Grands Lacs Africains Company, Brussels, Belgium. (Cassiterite, Colombo - tantalites, gold ores). Localities: Mokoro, Musumba, Mutwe-Niamdo.
3. Mr. R. Henrion, Explorations Minieres in Central Africa, Busoro, Ruanda on Kivu Lake. (Cassiterites, Wolframites, Beryllium ores)
4. DeBorchgrave Mines d'Etain, Kigali, Ruanda. Open pit, underground mines of cassiterite, columbites.

I was successful in exploring the granitic massif of Central Ruanda-Burundi. I described my method of exploration in the 1977-1978 report (assessment works) related to the distances between lines and pits, flying prospecting, and systematic with calculations of zones of influence and reserves in placers. I opened several mines in gold, cassiterite, columbite, plotting and establishing the hydraulic works, worked in open pit and underground. I established topographical maps showing the locations of my discoveries.

I started prospecting in British Columbia in 1959 for gold placer in the Cariboo Mining Division for a company. Today I have claims containing precious metals, base metals and industrial minerals. I do my geochemical surveys in silt, soils and rocks for my reconnaissance and systematic prospecting and orient my works according to the results of such surveys.

Beneficiation studies of some industrial mineral products have been done by the Ontario Research Foundation.

I am a member of the Canadian Institute of Mining and Metallurgy (CIM) and the Chamber of Mines of British Columbia. I buy my literature from the Department of Mines of B.C. and Ottawa and from the Geological Survey of Canada, in Vancouver. I have subscriptions to the Engineering and Mining Journal, CIM Bulletin, Chemical Week and Northern Miner. I keep informed with different publications from private and government organizations.

I consult with professionals and use the most up to date prospecting equipment available to prospectors (topolite, geiger counter, mineral light, stereoscope, small microscope, altimeters etc.)

I learned very useful informations on the industrial minerals from the Ontario Research Foundation, related to talc, graphlite, calcium carbonate, wollastonite etc. I am engaged in the research of miscellaneous industrial minerals which will be needed in the following years and the following century.

MARGO - LOUISE 2 CLAIMS ASSESSMENT WORKS 1985 - 1986

CLAIM # LOUISE 2 - SOUTH



View of South cliff of the forest fault shown on maps.
Strike of fault.

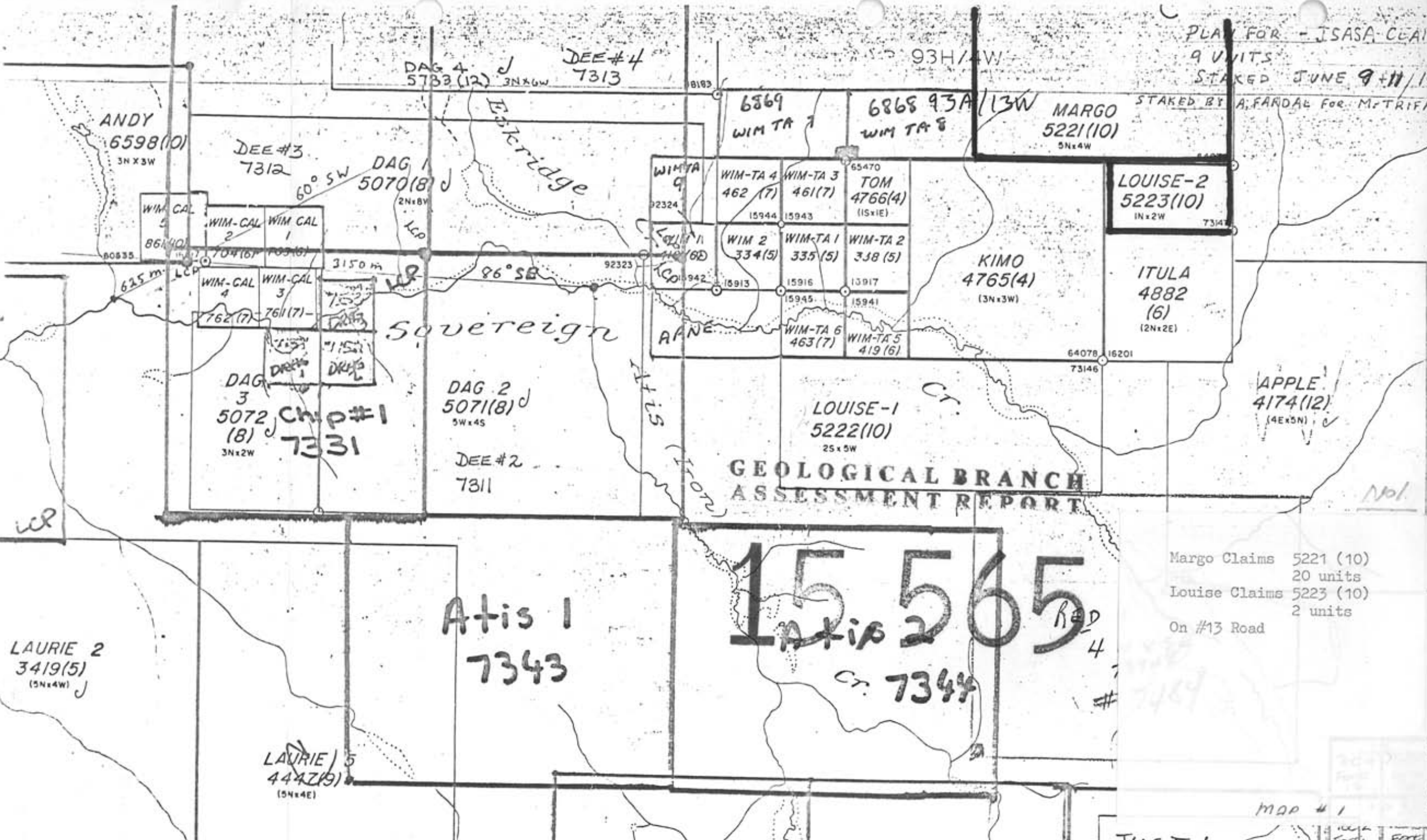
Through quartzitic formation, numerous white quartz veinlets - the outcrops are all altered and show a brown reddish colour due to the iron alteration. Copper alteration is seen in places. Iridescent tarnish and some remnant of chalcopyrite are detected with the lens. Samples taken for analyses.

Co-ordinate (approximately)

52° 58' 30" Latitude N
121° 51' 30" Latitude W

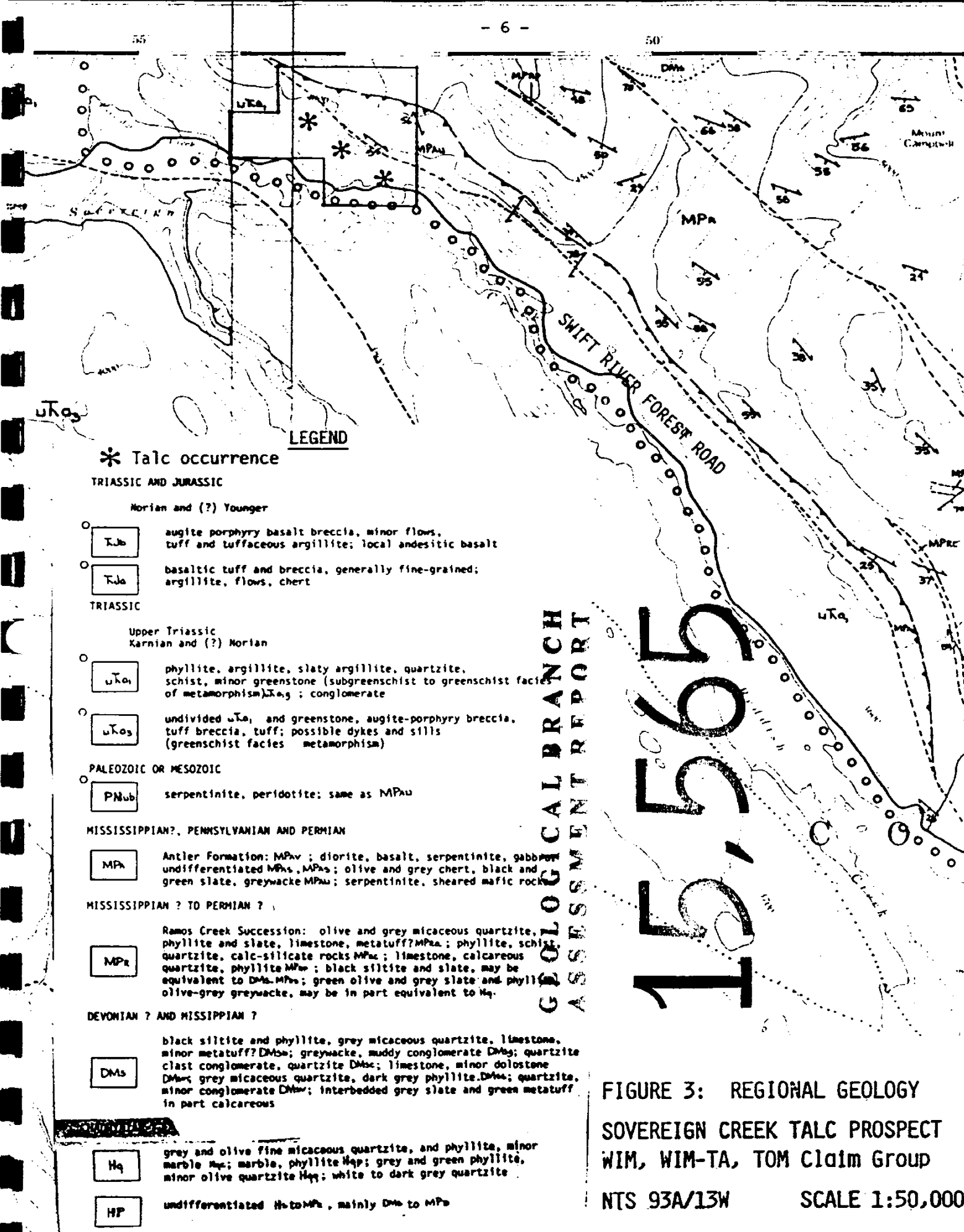
PLAY FOR - JSASA CLAIM
9 UNITS
STAKED JUNE 9+11/19

STAKED BY A. FARDAL For M. TRIFA



GEOLOGICAL BRANCH
ASSESSMENT REPORT

Margo Claims 5221 (10)
20 units
Louise Claims 5223 (10)
2 units
On #13 Road



*** Talc occurrence**

TRIASSIC AND JURASSIC

Morian and (?) Younger

- uKa augite porphyry basalt breccia, minor flows, tuff and tuffaceous argillite; local andesitic basalt
- uKb basaltic tuff and breccia, generally fine-grained; argillite, flows, chert

TRIASSIC

Upper Triassic
Karnian and (?) Norian

- uKa phyllite, argillite, slaty argillite, quartzite, schist, minor greenstone (subgreenschist to greenschist facies of metamorphism); conglomerate
- uKa3 undivided uKa and greenstone, augite-porphyry breccia, tuff breccia, tuff; possible dykes and sills (greenschist facies metamorphism)

PALEOZOIC OR MESOZOIC

- PNub serpentinite, peridotite; same as MPau

MISSISSIPPIAN?, PENNSYLVANIAN AND PERMIAN

- MPa Antler Formation: MPav; diorite, basalt, serpentinite, gabbro; undifferentiated MPas, MPas; olive and grey chert, black and green slate, greywacke MPau; serpentinite, sheared mafic rock

MISSISSIPPIAN ? TO PERMIAN ?

- MPr Ramos Creek Succession: olive and grey micaceous quartzite, phyllite and slate, limestone, metatuff? MPra; phyllite, schist, quartzite, calc-silicate rocks MPrc; limestone, calcareous quartzite, phyllite MPrc; black siltite and slate, may be equivalent to DMs-MPa; green olive and grey slate and phyllite; olive-grey greywacke, may be in part equivalent to Hq

DEVONIAN ? AND MISSISSIPPIAN ?

- DMs black siltite and phyllite, grey micaceous quartzite, limestone, minor metatuff? DMsa; greywacke, muddy conglomerate DMsb; quartzite clast conglomerate, quartzite DMsc; limestone, minor dolostone DMsd; grey micaceous quartzite, dark grey phyllite DMse; quartzite, minor conglomerate DMsf; interbedded grey slate and green metatuff, in part calcareous

- Hq grey and olive fine micaceous quartzite, and phyllite, minor marble Hqa; marble, phyllite Hqb; grey and green phyllite, minor olive quartzite Hqc; white to dark grey quartzite

- HP undifferentiated Hs to MPa, mainly DMs to MPa

**GEOLOGICAL BRANCH
ASSESSMENT REPORT**

15,565

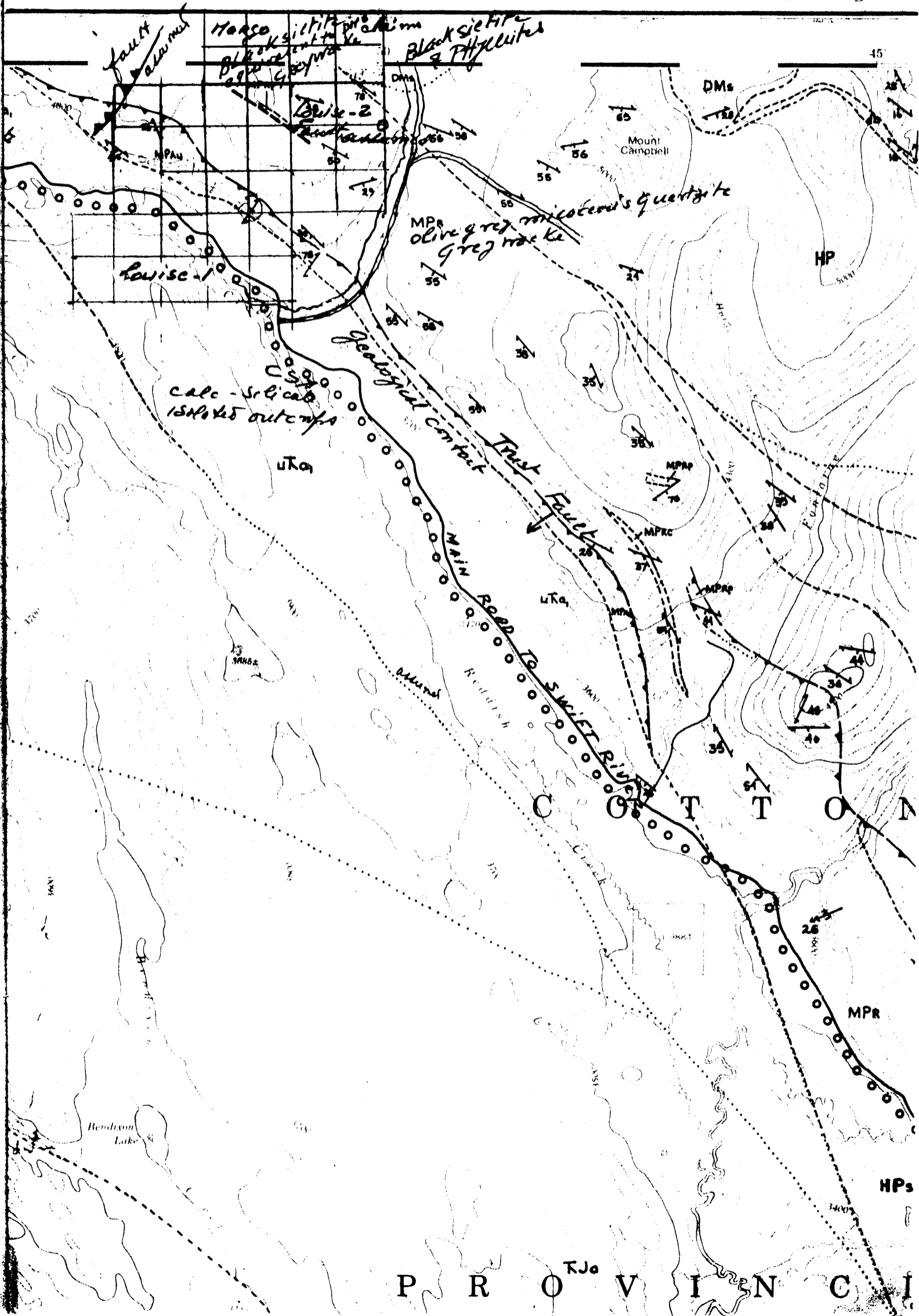
**FIGURE 3: REGIONAL GEOLOGY
SOVEREIGN CREEK TALC PROSPECT
WIM, WIM-TA, TOM Claim Group
NTS 93A/13W SCALE 1:50,000**

1720 #2

GEOLOGICAL BRANCH
ASSESSMENT REPORT

15,565

MAP 43



P R O V I N C I