

DRILLING ON THE
BANBURY CLAIM GROUP
INCLUDING THE
AURA 1-4, BONIO, HB, COCO 1-2, & SHEEBA 1-2 CLAIMS
RECORD NOS. 2302-2306, 2316-2319, AND 2368
OSOYOOS & SIMILKAMEEN MINING DIVISIONS

NTS : 92H/8E
LOCATION : 49°21.7 N Latitude: 120°08' ^{07.3'} W Longitude
OWNERS : Noranda Exploration Ltd. BANBURY GOLD MINES LTD.
1050 Davie St.,
Vancouver, B. C. V6B 3T5
OPERATOR: NORANDA EXPLORATION CO., LTD.
AUTHOR : M. R. Sanford
DATE : November 24, 1986

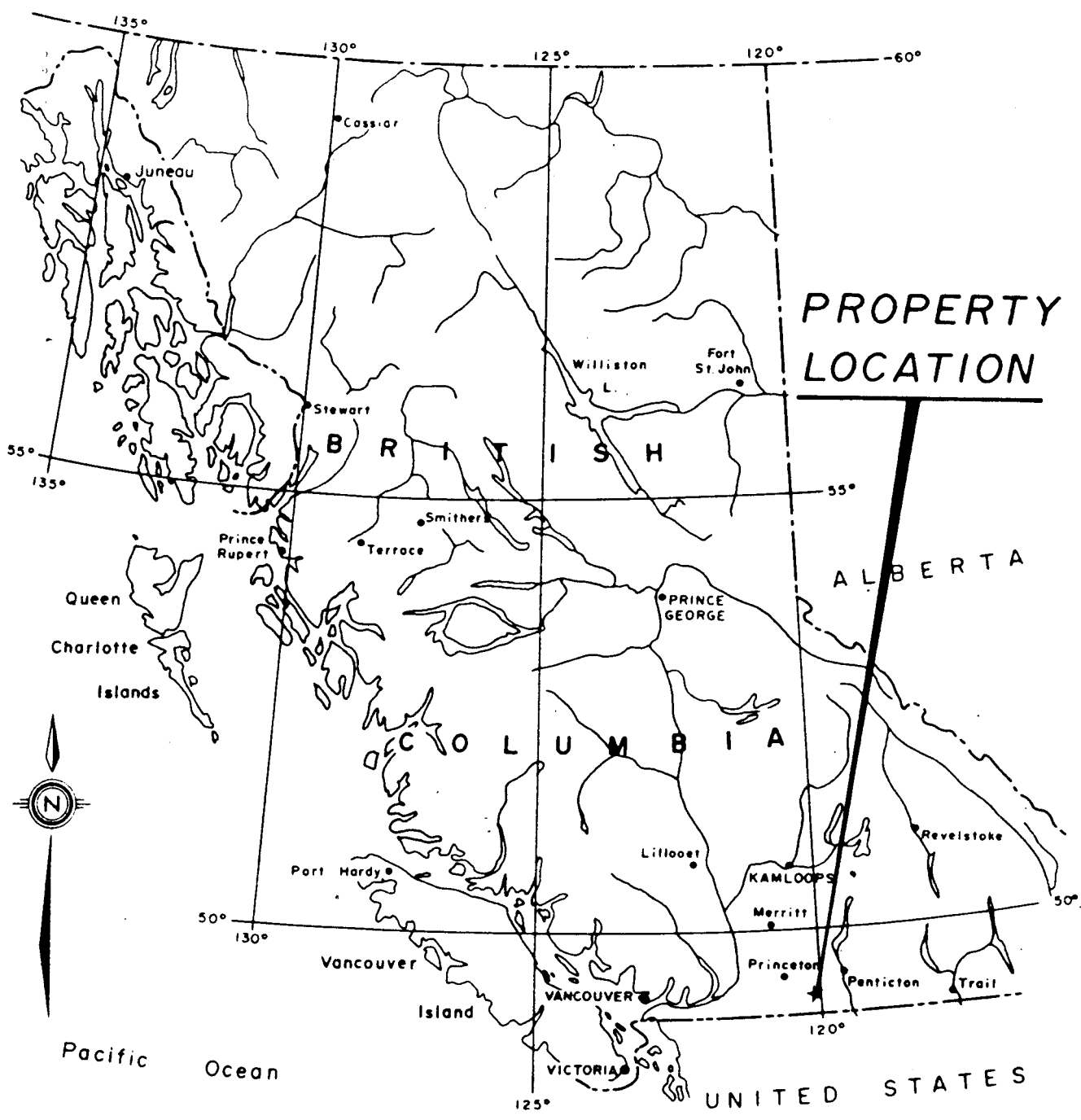
**GEOLOGICAL BRANCH
ASSESSMENT REPORT**

15,601

FILMED

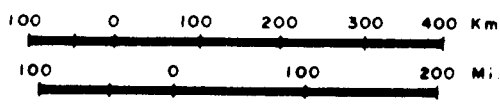
TABLE OF CONTENTS

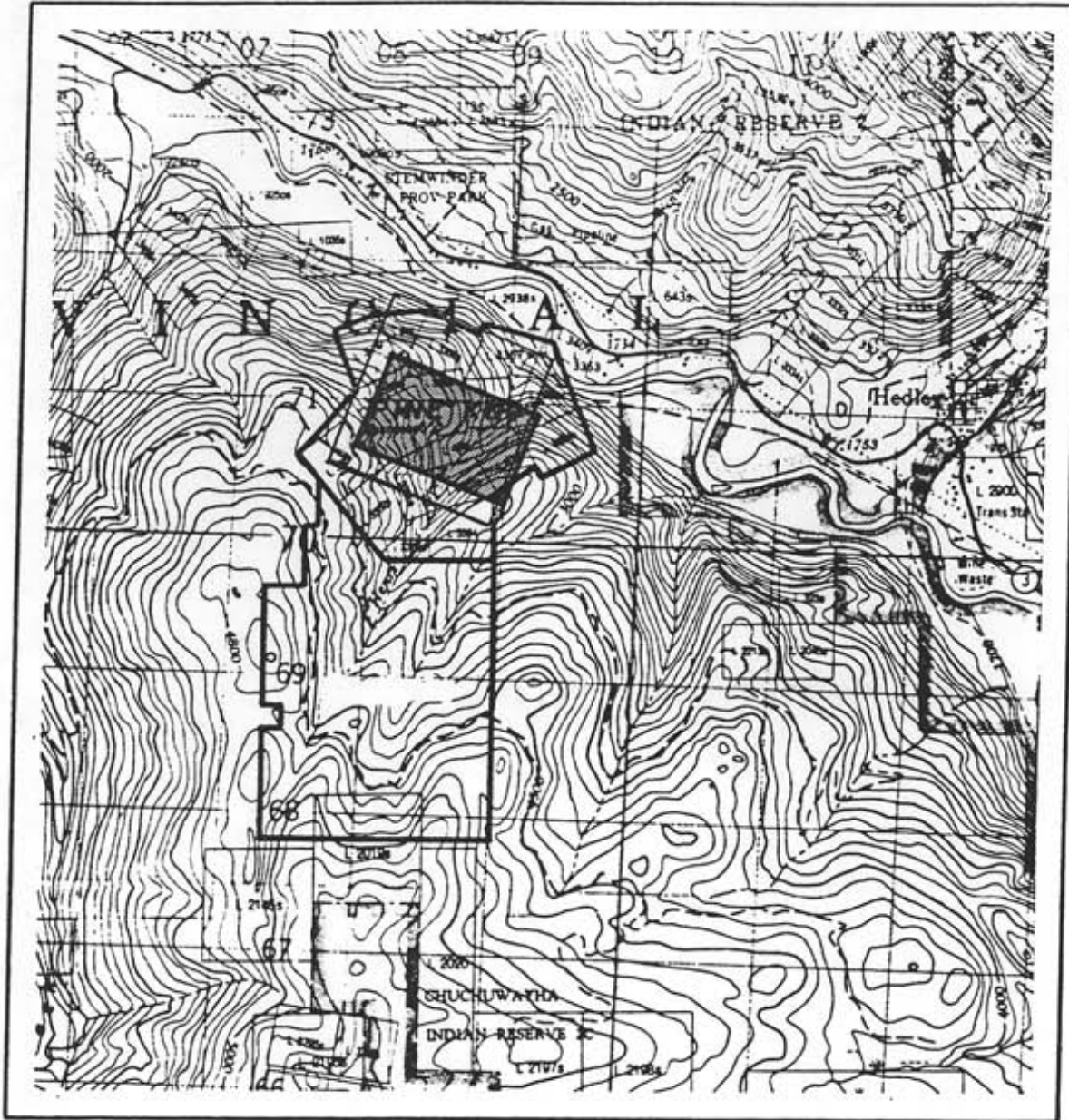
| | | |
|------|-----------------------------------|----|
| A. | INDEX MAP, BRITISH COLUMBIA | 1. |
| B. | LOCATION MAP, 1:50:000 | 2. |
| C. | PROPERTY MAP, 1:2500 | 3. |
| I. | INTRODUCTION | 4. |
| II. | SUMMARY OF WORK PERFORMED | 4. |
| III. | RESULTS AND INTERPRETATION | 4. |
| IV. | ITEMIZED COST STATEMENT | 5. |
| V. | AUTHOR'S QUALIFICATIONS | 6. |
| | APPENDIX A: DRILL LOGS | 7. |



**PROPERTY
LOCATION**

PINE KNOT CLAIM GROUP





Shaded Area covered by
1:2500 Plan. page 3.



BANBURY GOLD MINES LTD.

PINE KNOT CLAIMS

HENRI CREEK, HEDLEY AREA, B. C.

OSOYOOS M. D., B. C.

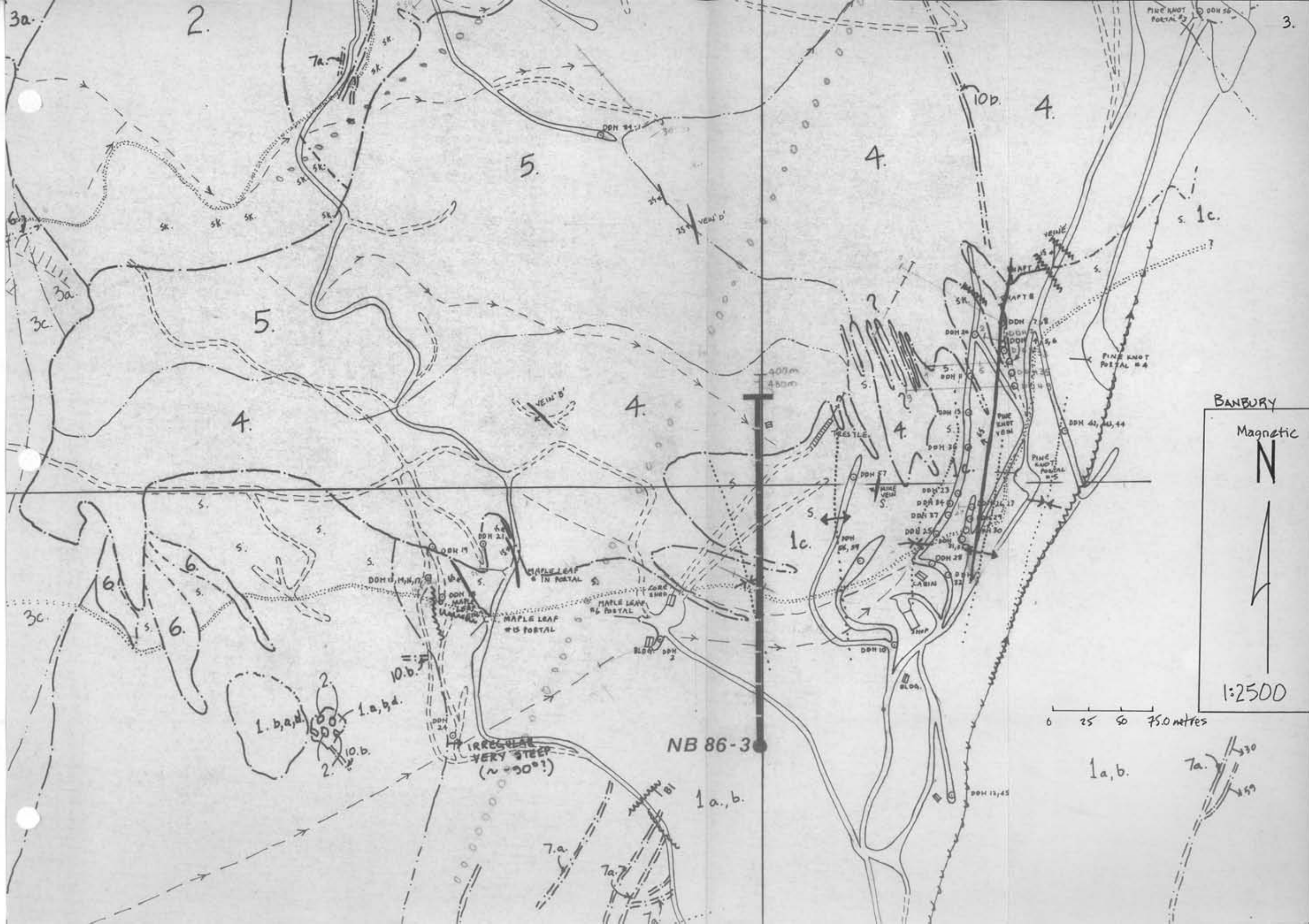
CLAIM LOCATION MAP

SCALE:
1:50,000

DATE:

SHEET:

N.T.S.
92 H / 8 E



I. INTRODUCTION:

The Banbury Gold Mines Ltd. Henri Creek property is located on the southern slopes of the Similkameen valley, 3km west of the town of Hedley, B. C. Access to the property is 3km along the old railway grade along the south side of the river. This road connects with Highway #3 7km west of Hedley at the bridge over the Similkameen River.

The property was acquired in 1978 by Banbury Gold Mines Ltd., and an extensive exploration program has been carried out since that time, including geological mapping and prospecting. Soils geochemistry surveys, geophysical surveys, road building, trenching, diamond drilling and underground development.

In 1985, Banbury Gold Mines entered an agreement with Noranda Exploration Ltd. to further the exploration and assessment of economic potential of the property.

II. SUMMARY OF WORK PERFORMED:

On May 12, 1986, NQ diamond drill hole NB86-3 was commenced, and it was completed on May 20, 1986. It was 360.9m in length, and was drilled on the Pine Knot Crown granted mineral claim, lot 465.

III. RESULTS AND INTERPRETATION:

The purpose of the hole was to test the contact area where mafic, coarse-grained diorite intrudes limestones and argillites for alteration, silicifications, sulphide development and gold mineralization. The hole was collared in Triassic Nicola Group sediments and ended in Hedley Diorite, probably of Lower Jurassic age. The log of the hole, complete with assays is presented in Appendix A. The hole showed zones of intense metasomatic alteration. These were generally accompanied by porphyry dykes of dioritic composition up to 3m wide. The contact zone also showed several small quartz-sulphide veins with concomitant gold mineralization.

The core is in storage on the property.

Core samples were analyzed by standard fire assaying at Bondar-Lyng

IV. ITEMIZED COST STATEMENT:

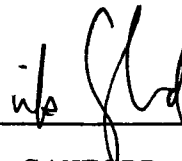
360.9m of NQ DIAMOND DRILLING
@ \$95.00/m\$34,285.50

V. AUTHOR'S QUALIFICATIONS:

I, Michael R. Sanford, of Hedley, B.C.,
hereby certify:

1. that I am a graduate of the University of British Columbia, 1978, and hold a Bachelors of Science Degree in Geology.
2. that I have worked for Banbury Gold Mines, Ltd. as a geologist for the past six years, and have been working in the field of exploration geology for the past 12 years.
3. that this report is based on information and drilling completed on Banbury Gold Mines Pine Knot property near Hedley B.C. for Noranda Exploration Ltd.

Signed

A handwritten signature in black ink, appearing to read 'M.R. Sanford', written over a horizontal line.

M. R. SANFORD, Geologist

NORANDA EXPLORATION COMPANY LTD.

| Date Collared May 12/86 | | Date Completed May 20/86 | | Core Size N Q | | DIP TESTS | | | | PROPERTY BANBURY | | PROJECT No. 1.53 | | N.T.S. No. 92H8E | |
|----------------------------|------|-------------------------------|--|----------------------|-------------|-------------------|------------|-----------------|-----------------------|---------------------|---------|---------------------|---------------------|---------------------|--|
| FIELD CO-ORDINATES | | | | DEPTH | BEARING | | ANGLE | | SURVEYED CO-ORDINATES | | | | Sheet 1 of 16 | | |
| Lat N 9800 | | Elev 909m | | | Dip -45° | RECORDED 004.5 | CORRECTED | RECORDED -45 | CORRECTED | Lat. | Elev. | Dip | HOLE No. NB-86-3 | | |
| Dep. E 10,000 | | Length 360.9m | | Bearing Grid 000° | 143.3 | 004.5 | -46 | | Dep. | Length | Bearing | | | | |
| From | To | Recovery | Description | Structure | % Sulph. | Est. Grade | SAMPLE No. | Width | ASSAYS | | | | | | |
| | | | | | | | | | | | | | | | |
| 0 | 18.3 | 0 | SHALE & TALUS OVERBURDEN | | | | | | | | | | | | |
| 18.3 | 32.6 | 10.3m lost .3 @ 31.7 | ARGILLITE WITH MINOR LIMESTONE BEDS 18.3-22.7 core blocky, 20 cm with 10% CALCITE STRINGERS @ 22.5 | | | | | | | | | | | | |
| | | | 22.7-30.7 core rubble - FeOx on fractures | | | | | | | | | | | | |
| | | | 30.7-32.6 core pulverized & soft, black & sheared | | | | 096697 | 30.7-32.6 | <.07 | | | | | | |
| | | | Bedding: 40° @ 19.5m 20 @ 27.3m | | | | | | | | | | | | |
| 32.6 | 68.3 | 0 | SAND & PULVERIZED ROCK - NO RECOVERY Triconed to 68.3m | | | | | | | | | | | | |
| 68.3 | 91.8 | 23.5 | ARGILLITE WITH MINOR LIMY & SANDY BEDS 68.3-74.5 Fine grained, black 2% v.f.gr. disseminated py.(syngenetic) 74.5-75.1 altered limy beds grey & dk.grey | | | | | | | | | | | | |
| | | | FAULT: 75.1-77.1 sheared, rubble & pulverized core 3% disseminated py. | | | | 096698 | 75.1- 77.1 | <0.07 | | | | | | |
| | | | 77.1-81.5 bedded black arg.& minor fine limy siltstone | | | | | | | | | | | | |
| | | | 81.5-82.5 sandstone-v.poorly sorted 10% interbeds of argillite & siltstone | | | | 096699 | 81.5- 82.2 | <0.07 | | | | | | |
| | | | BOTTOM 30cm. has 5% smeared Sx | | | | 096700 | 82.2- | | | | | | | |

DRILL LOG - 81

Date May 17/86 _____ 82.5 <0.07
 Logged By W. J. [Signature]

NORANDA EXPLORATION COMPANY LTD.

| Date Collared | | Date Completed | | Core Size | | DIP TESTS | | | | PROPERTY BANBURY | | PROJECT No. 1.53 | | N.T.S. No. | | |
|--------------------|------|----------------|--|---|--|-----------|----------|------------|------------|-----------------------|-----------|------------------|--|---------------|--|--|
| FIELD CO-ORDINATES | | | | DEPTH | | BEARING | | ANGLE | | SURVEYED CO-ORDINATES | | | | Sheet 2 of 16 | | |
| Lat. | | Elev. | | Dip | | RECORDED | | CORRECTED | | Lat. | | Elev. | | Dip | | |
| Dep. | | Length | | Bearing | | RECORDED | | CORRECTED | | Dep. | | Length | | Bearing | | |
| From | To | Recovery | Description | | | Structure | % Sulph. | Est. Grade | SAMPLE No. | Width | ASSAYS | | | | | |
| | | | | | | | | | | | Au(gmt) | | | | | |
| 68.3 | 91.8 | | 82.5-85.6 | Argillite with minor altered beds | | | | 4 | | 96701 | 84.6-84.8 | <0.07 | | | | |
| continued | | | 84.6-84.8 | Alt. with 4% py., minor calcite. | | | | | | | | | | | | |
| | | | 85.6-85.8 | Bleached, altered, mineralized m-gr. diorite, slightly porphyritic | | | | 4 | | 96702 | 85.6-85.8 | <0.07 | | | | |
| | | | | 4% py. contacts sharp @ 65° | | | | | | | | | | | | |
| | | | 85.8 - 91.8 | Argillite with minor altered zones | | | | | | | | | | | | |
| | | | BEDDING: 05° @ 70.0m | | | | | | | | | | | | | |
| | | | 05° @ 71.5m | | | | | | | | | | | | | |
| | | | 15° @ 73.4m | | | | | | | | | | | | | |
| | | | 25° @ 74.8m | | | | | | | | | | | | | |
| | | | 25° @ 75.1m | | | | | | | | | | | | | |
| | | | 75° @ 77.2m | | | | | | | | | | | | | |
| | | | 70° @ 78.0m | | | | | | | | | | | | | |
| | | | 65° @ 78.7m | | | | | | | | | | | | | |
| | | | 65° @ 79.4m | | | | | | | | | | | | | |
| | | | 60° @ 80.6m | | | | | | | | | | | | | |
| | | | 70° @ 82.2m | | | | | | | | | | | | | |
| | | | 80° @ 84.5m | | | | | | | | | | | | | |
| | | | 75° @ 88.7m | | | | | | | | | | | | | |
| | | | 80° @ 89.5m | | | | | | | | | | | | | |
| | | | 85° @ 90.8m | | | | | | | | | | | | | |
| 91.8 | 95.3 | 4.5 | DIORITE | LIGHT, bleached, m.gr. brownish-pinkish-green. Blocky, fractured soft, with talc on the many fractures 1-2% py-po, very slightly magnetic | | | | | | | | | | | | |
| | | | Top contact @ 40° to c.9 | | | | | | | | | | | | | |
| | | | Bottom contact sheared & bleached @ 55°-5% Sx. | | | | | | | | | | | | | |

ifd

NORANDA EXPLORATION COMPANY LTD.

| Date Collared | | Date Completed | | Core Size | | DIP TESTS | | | | PROPERTY BANBURY | | PROJECT No. 1.53 | | N.T.S. No. | |
|--------------------|-------|----------------|---|-----------|--|-----------|--|-----------|------------|-----------------------|-----------------|------------------|-------|---------------|--|
| FIELD CO-ORDINATES | | | | DEPTH | | BEARING | | ANGLE | | SURVEYED CO-ORDINATES | | | | Sheet 3 of 16 | |
| Lat. | | Elev. | | Dip | | RECORDED | | CORRECTED | | RECORDED | | CORRECTED | | HOLE No. | |
| | | | | 810' | | 003.5 | | | | -47° | | | | NB86-3 | |
| Dep. | | Length | | Bearing | | | | | | Dep. | | Length | | Bearing | |
| | | | | | | | | | | | | | | | |
| From | To | Recovery | Description | | | Structure | | % Sulph. | Est. Grade | SAMPLE No. | Width | ASSAYS | | | |
| | | | | | | | | | | | | | | | |
| 95.3 | 103.0 | | ARGILLITE WITH ALTERED ZONES - black, fine-grained 1% v.f.g. disseminated py, some slightly limy zones. 97.9-98.0-green alt. bed-5% sulphides soft | | | | | | | | | | | | |
| | | | 100.6-100.9-sheared & pulverized 109.9-101-alt. diorite? in arg. 4% Sx 101.1-101.3-alt. diorite med-grained light brown pink-green | | | | | | | 96703 | 100.6-101.1 | | 0.07 | | |
| | | | contacts roughly 55° 101.3-101.9-Altered beds 2mm-5cm 3% Sx -Faulted beds 101.9-103.0 argillite with 3% cal stringers, sheared | | | | | | | 96704 | 101.1-101.3 | | <0.07 | | |
| | | | Bedding: 50° @ 97.0m 40° @ 101.5m 40° @ 98.4m 50° @ 102.8m | | | | | | | 96705 | 101.3-101.9 | | <0.07 | | |
| 103.0 | 103.7 | | DIORITE - Alt. med. gr. 3-4% py light grey-brown Top contact @ 50° -sheared Bottom contact @ 45° with 5mm Qz-Sx | | | | | | | 96707 | 103.0- 103.7 | | <0.07 | | |
| 103.7 | 104.5 | | SANDSTONE & ARGILLITE light to med. grey to dark grey-minor Qz-Sx stringers(2x4min) 3% Sulphides, slightly limy Bedding: 45° @ 103.8m | | | | | | | 96708 | 103.7- 104.5 | | <0.07 | | |
| 104.5 | 111.6 | | ARGILLITE Black-fine grained, bedded Bedding: 49° @ 105.2m 15° @ 106.0m 105.6-105.8 - shearing @ 15° to c.a. 110.8 - 111.4 - silty, silicified Bedding: 05° @ 108.1m 20° @ 111.1m | | | | | | | | | | | | |

NORANDA EXPLORATION COMPANY LTD.

| Date Collared | | Date Completed | | Core Size | | DIP TESTS | | | | PROPERTY BANBURY | | PROJECT No. 1.53 | | N.T.S. No. | | | | |
|--------------------|-------|----------------|---------------------------------|--|--|-----------|----------|------------|------------|-----------------------|-------------|------------------|--|---------------|--|--|-------|--|
| FIELD CO-ORDINATES | | | | DEPTH | | BEARING | | ANGLE | | SURVEYED CO-ORDINATES | | | | Sheet 4 of 16 | | | | |
| Lat. | | Elev. | | Dip | | RECORDED | | CORRECTED | | Lat. | | Elev. | | Dip | | | | |
| Dep. | | Length | | Bearing | | RECORDED | | CORRECTED | | Dep. | | Length | | Bearing | | | | |
| From | To | Recovery | Description | | | Structure | % Sulph. | Est. Grade | SAMPLE No. | Width | ASSAYS | | | | | | | |
| | | | | | | | | | | | | | | | | | | |
| 111.6 | 113.3 | 2.7 | DIORITE | Altered-Med.gr.slightly porphyritic, brownish-pink 3% py in fractures Top contact @ 15°, Bottom contact @ 20° | | | | 3 | | 96709 | 111.6-113.3 | | | | | | <0.07 | |
| 113.3 | 113.9 | .6 | ARGILLITE | bedding @ 20° @ 113.4 Altered w. calcite 113.3-113.6 Bedding: 40° @ 113.7m | | | | | | 96710 | 113.3-113.9 | | | | | | <0.07 | |
| 113.9 | 114.3 | .4 | DIORITE | Altered, silicified Contacts @ 70°, 3% Sx | | | | 3 | | 96711 | 113.9-114.3 | | | | | | <0.07 | |
| 114.3 | 115.0 | .7 | ARGILLITE | Bedding: 50° @ 114.7m | | | | | | | | | | | | | | |
| 115.0 | 116.5 | 1.5 | DIORITE | Altered, mottled brownish-greenish-grey, 3% py. | | | | 3 | | 96712 | 115.0-116.5 | | | | | | <0.07 | |
| 116.5 | 117.4 | .9 | SILICIFIED SEDIMENT | altered with 3-4% sulphides Bedding: @ 5° | | | | 3 | | 96713 | 116.5-117.4 | | | | | | <0.07 | |
| 117.4 | 120.9 | 3.5 | DIORITE | Altered, 3% py, 3% Qz-Cal stringers TOP CONTACT sheared BOTTOM CONTACT @ 15° | | | | | | 96714 | 117.4-119.1 | | | | | | <0.07 | |
| | | | | | | | | | | 96715 | 119.1-120.9 | | | | | | <0.07 | |
| 120.9 | 122.7 | 1.6m | ALTERED SEDIMENTS AND ARGILLITE | GREENISH TO DARK GREY dark green and dark brown minerals 2.5mm grains at top & bottom contact | | | | | | 96716 | 120.9-122.7 | | | | | | <0.07 | |

NORANDA EXPLORATION COMPANY LTD.

| Date Collared | | Date Completed | | Core Size | | DIP TESTS | | | | PROPERTY BANBURY | | PROJECT No. 1.53 | | N.T.S. No. | | |
|--------------------|-------|----------------|--|-----------|--|-----------|--|-----------|------------|-----------------------|-------------|---------------------|--|---------------|--|--|
| FIELD CO-ORDINATES | | | | DEPTH | | BEARING | | ANGLE | | SURVEYED CO-ORDINATES | | | | Sheet 5 of 16 | | |
| Lat. | | Elev. | | Dip | | RECORDED | | CORRECTED | | Lat. | | Elev. | | Dip | | |
| Dep. | | Length | | Bearing | | | | | | Dep. | | Length | | Bearing | | |
| From | To | Recovery | Description | | | Structure | | % Sulph. | Est. Grade | SAMPLE No. | Width | ASSAYS | | | | |
| | | | | | | | | | | | | | | | | |
| 122.7 | 124.2 | 1.5 | ALTERED DIORITE GREENISH slightly porphyritic-2-3% py in fractures and disseminated grains TOP contact @ 30°; BOTTOM contact irregular, low angle | | | | | 2 | | 96717 | 122.7-124.2 | | | <0.07 | | |
| 124.2 | 140.4 | | ALTERED SEDIMENTS AND ARGILLITE, mid-grey mottled with greenish to buff layers -generally 2-3% py, fracture related, heavier in altered zones, also as diss. grains | | | | | | | 96718 | 124.2-125.2 | | | 0.07 | | |
| | | | | | | | | | | 96719 | 125.2-126.9 | | | 0.07 | | |
| | | | | | | | | | | 96720 | 126.9-129.1 | | | <0.07 | | |
| | | | 124.2-125.2-dark grey- mid-grey arg. & 50% brownish diorite | | | | | | | 96721 | 129.1-130.8 | | | <0.07 | | |
| | | | 125.2-126.9 - brownish grey altered sed. many fractures 2% py 125.2-125.7 sheared, greenish | | | | | | | 96722 | 130.8-132.0 | | | <0.07 | | |
| | | | 126.9-129.1 -vfg brownish grey alt. sed with 5% silicified, chloritized stringers | | | | | | | 96723 | 132.0-132.6 | | | 1.47 | | |
| | | | 2.4mm @ 15° to @ .9 2% Sx(py) | | | | | | | 96724 | 135.4-137.4 | | | <0.07 | | |
| | | | 129.1-130.8 - alt. greenish sed & diorite mottled. 4% Sx? | | | | | | | | | | | | | |
| | | | 130.8 - 132.0 - brownish grey vfg. alt sed, 2% py | | | | | | | | | | | | | |
| | | | 132.0-132.6 - white to greenish altered slightly limy layer @ 55 Bottom 5cm sheared with 10% Sx, 5% Sx throughout zone | | | | | | | | | | | | | |
| | | | 132.6-135.4 black arg. w. minor slst & highly altered, bed between 134.1 & 134.5 Bedding: 20° @ 133.4 15° @ 134.2 | | | | | | | | | | | | | |
| | | | 135.4-137.4 - 40% highly altered zones in argillite: altered zones or greenish white - 2% Sx. throughout | | | | | | | | | | | | | |

ihg/ld

NORANDA EXPLORATION COMPANY LTD.

| Date Collared | | Date Completed | | Core Size | | DIP TESTS | | | | PROPERTY BANBURY | | PROJECT No. 1.53 | | N.T.S. No. | | |
|----------------------|-------|----------------|---|-----------|--|-----------|-----------|-----------|----------|-----------------------|------------|------------------|--------|---------------|--|--|
| FIELD CO-ORDINATES | | | | DEPTH | | BEARING | | ANGLE | | SURVEYED CO-ORDINATES | | | | Sheet 6 of 16 | | |
| Lat. | | Elev. | | Dip | | RECORDED | | CORRECTED | | RECORDED | | CORRECTED | | HOLE No. | | |
| Dep. | | Length | | Bearing | | | | | | Dep. | | Length | | Bearing | | |
| From | To | Recovery | Description | | | | Structure | | % Sulph. | Est. Grade | SAMPLE No. | Width | ASSAYS | | | |
| | | | | | | | | | | | | Au(gmt) | | | | |
| 124.2 (continued) | 140.4 | | 137.4-140.4-Argillite & minor siltstone core blocky to rubbly - sheared @ low angle Bedding: 05° @ 138.0m | | | | | | | | | | | | | |
| 140.4 | 141.3 | .9 | DIORITE & GOUGE 140.4-141.3 - sheared gouge & diorite buff to light green grey 4% pyrite | | | | | | 4 | | | | | | | |
| 141.3 | 148.4 | 7.1 | ARGILLITE W. MINOR SILTSTONE LAYERS 141.3-142.3 RUBBLY CORE 142.3-144.0 RUBBLY TO PULVERIZED CORE 144.0-147.5 BLOCKY CORE 147.5-147.9 SILICIFIED & ALTERED 3% Sx 147.9-148.4 BLACK to dark grey Argillite | | | | | | | | | | | | | |
| 148.4 | 152.6 | 4.2 | SKARN Hard, dense, green-pink rock with variable colour & texture <u>Magnetic</u> ; core intact to blocky 148.4-148.9-50% porphyritic diorite 5% sulphides, mottled pink & green (po) 25% light orange-pink garnets 148.9-150.9 green-pink garnet skarn fine, pink-orange garnets -3% Sx banded (relict bedding?) @ 20° to c.a. 150.9-151.8 DIORITE - highly altered 3% Sx(py,po) 1 cm Qz Sx @ 10 151.8-152.6 - pink & green skarn 5% Sx(py,po) banded @ 20°. Relict granitic texture? | | | | | | | | 96726 | 148.4-148.9 | <0.07 | | | |
| | | | | | | | | | | | 96727 | 148.9-150.9 | <0.07 | | | |
| | | | | | | | | | | | 96728 | 150.9-151.8 | <0.07 | | | |
| | | | | | | | | | | | 96729 | 151.8-152.6 | <0.07 | | | |

NORANDA EXPLORATION COMPANY LTD.

| Date Colored | | Date Completed | | Core Size | | DIP TESTS | | | | PROPERTY BANBURY | | | PROJECT No. 1.53 | | N.T.S. No. | | | | | |
|--------------------|-------|----------------|--|-----------|--|-----------|-----------|-----------|----------|------------------|------------|-----------------------|------------------|--------|------------|--------|--|---------|--|-------|
| FIELD CO-ORDINATES | | | | | | DEPTH | | BEARING | | ANGLE | | SURVEYED CO-ORDINATES | | | | | | | | |
| Lat. | | Elev. | | Dip | | RECORDED | | CORRECTED | | RECORDED | | CORRECTED | | Lat. | | Elev. | | Dip | | |
| Dep. | | Length | | Bearing | | | | | | | | | | Dep. | | Length | | Bearing | | |
| From | To | Recovery | Description | | | | Structure | | % Sulph. | Est. Grade | SAMPLE No. | Width | | ASSAYS | | | | | | |
| | | | | | | | | | | | | | | | | | | | | |
| 152.6 | 157.5 | 4.2m | ARGILLITE Grey-v.f.gr.core rubbly to pulverized & sheared throughout 152.6-153.4 - fractured with holes & vugs ? 3% fracture & vug-related py | | | | | | | | 96730 | 152.6-153.4 | | | | | | | | <0.07 |
| 157.5 | 158.2 | .7 | ALTERED DIORITE Broken, blocky, 3% py 60% brownish ((biotitized ?) mafics med-grained | | | | | | | | 96731 | 157.5-158.2 | | | | | | | | <0.07 |
| 158.2 | 164.4 | 6.2 | ALTERED SEDS & ARGILLITE 158.2-159.4 - dark grey argillite rubbly 159.4-160.5 - altered brown-grey v.f.g.seds 3% py 160.5-160.6 - highly alt. w. 20% py, a py, minor galena in Qz stringer 3 cm wide @ 45° | | | | | | | | | | | | | | | | | |
| | | | 160.6-162.2 - alt. seds green, pink, mottled 3-4% py, blocky | | | | | | | | 96732 | 160.5-160.6 | | | | | | | | 0.79 |
| | | | 162.2-163.4 - as above-sheared-rubbly to blocky | | | | | | | | 96733 | 160.6-162.2 | | | | | | | | <0.07 |
| | | | 163.4-164.4 - argillite | | | | | | | | 96734 | 162.2-163.4 | | | | | | | | <0.07 |
| 164.4 | 166.4 | 1.8 | SKARN green, mottled, 5% pinkish garnets-10% dark-green-black mineral? 3-4% Pyrrhotite - magnetic core hard ; intact to blocky Top contact v. irregular at low angle to core | | | | | | | | 96735 | 164.6-166.4 | | | | | | | | <0.07 |
| 166.4 | 169.0 | 2.6 | DIORITE Altered-med gr. slightly porphyritic 2-3% py 166.9-3cm Qz @ 30° - minor py. TOP CONTACT @40° ; BOTTOM CONTACT IRREGULAR | | | | | | | | 96736 | 166.4-167.3 | | | | | | | | <0.07 |
| | | | | | | | | | | | 96737 | 167.3-169.0 | | | | | | | | <0.07 |

NORANDA EXPLORATION COMPANY LTD.

| Date Collared | | Date Completed | | Core Size | | DIP TESTS | | | | PROPERTY | | PROJECT No. | | N.T.S. No. | |
|--------------------|-------|----------------|--|-----------|----------|------------|------------|--------------|--------|----------|--|-----------------------|--|---------------|--|
| FIELD CO-ORDINATES | | | | | | DEPTH | | BEARING | | ANGLE | | SURVEYED CO-ORDINATES | | | |
| Lat. | | Elev. | | Dip | | RECORDED | | CORRECTED | | RECORDED | | CORRECTED | | Sheet 8 of 16 | |
| Dep. | | Length | | Bearing | | | | | | Lat. | | Elev. | | Dip | |
| | | | | | | | | | | Dep. | | Length | | Bearing | |
| | | | | | | | | | | | | | | HOLE No. | |
| | | | | | | | | | | | | | | NB86-3 | |
| From | To | Recovery | Description | Structure | % Sulph. | Est. Grade | SAMPLE No. | Width | ASSAYS | | | | | | |
| | | | | | | | | | | Au(gmt) | | | | | |
| 169.0 | 175.2 | 6.2 | ARGILLITE Black v.f.gr. 1% fine Qz stringers Bedding 10° @ 173.2 | | | | | | | | | | | | |
| 175.2 | 179.0 | 3.8 | ALTERED ZONE & SKARN Buff, pink, yellowish-green Fine-med.gr.texture - metamorphosed Limestone 3% Py in blebs & fractures | | | | | | | | | | | | |
| | | | 175.2-175.25 Qz with 30% sheared Sx, py, Apy & Sphal | | | | 96738 | 175.2-175.25 | 0.45 | | | | | | |
| | | | 175.25-177.0 - med.grained Skarn-light pink orange garnets in abundance. | | | | 96739 | 175.25-177.0 | <0.07 | | | | | | |
| | | | | | | | 96740 | 177.0-177.7 | 0.17 | | | | | | |
| | | | 177.0-177.7 - brownish f.gr.seds | | | | 96741 | 177.7-179.0 | <0.07 | | | | | | |
| | | | 177.7-178.5 - as from 175.25-177.0 banded @ 75° @ 177.7-178.0 | | | | | | | | | | | | |
| | | | 178.5-179.0 fine grained-greenish grey | | | | | | | | | | | | |
| 179.0 | 186.8 | 7.8 | ALTERED SEDIMENTS AND ARGILLITE Core blocky to intact; mottled dark grey-greenish; 2-3% py-po @ 182.5 - 10cm of Qz-py-sediments @ 80° to core @ 183.0 - 10cm Diorite @ 10° to c.a. | | | | | | | | | | | | |
| | | | | | | | 96742 | 182.5-182.6 | 0.58 | | | | | | |
| | | | 183.2-186.8 banding (= bedding?) @ 10° to c.a. | | | | | | | | | | | | |

NORANDA EXPLORATION COMPANY LTD.

| Date Collared | | Date Completed | | Core Size | | DIP TESTS | | | | PROPERTY BANBURY | | PROJECT No. 1.53 | | N.T.S. No. | |
|--------------------|-------|----------------|--|-----------|----------|------------|------------|-------------|-----------------------|------------------|------|------------------|---------------|------------|-----|
| FIELD CO-ORDINATES | | | | DEPTH | BEARING | | ANGLE | | SURVEYED CO-ORDINATES | | | | Sheet 9 of 16 | | |
| Lat. | | Elev. | | | Dip | | RECORDED | CORRECTED | RECORDED | CORRECTED | Lat. | | Elev. | | Dip |
| Dep. | | Length | | Bearing | | | | | | Dep. | | Length | | Bearing | |
| From | To | Recovery | Description | Structure | % Sulph. | Est. Grade | SAMPLE No. | Width | ASSAYS | | | | | | |
| | | | | | | | | | Au(gmt) | | | | | | |
| 186.8 | 213.0 | 26m | DIORITE variable texture greyish green-core intact generally to blocky 186.8-193.1 - porphyritic 30% Hb. phenocrysts 3-5mm in a medium-f. grained groundmass | | | | | | | | | | | | |
| | | | 193.1-193.5 Altered diorite, green-pink-5% Sx 2x lcm Qz-sh-sulphides @ 75° to c. a. | | | | 96743 | 193.1-193.5 | 0.14 | | | | | | |
| | | | 193.5-196.7 med. gr. diorite-slightly altered, slightly porphyritic | | | | | | | | | | | | |
| | | | 196.7-199.3 soft-altered, broken zone | | | | 96744 | 196.7-198.1 | 0.45 | | | | | | |
| | | | 199.3-213.0 -slightly porphyritic altered brown-grey diorite- 2-3% pyrrhotite-magnetic | | | | 96745 | 198.1-199.3 | 0.07 | | | | | | |
| | | | | | | | 96746 | 205.5-207.0 | 0.10 | | | | | | |
| 213.0 | 215.4 | 2.4 | ALTERED ZONE/SKARN Mottled pink, green Irregular & variable texture, 2-3% Sx 10% pinkish garnets 2-5cm, very irregular-shapes 213.0-213.6 granitic texture f.gr. Two lcm bands Sx | | | | 96747 | 213.0-214.2 | 0.27 | | | | | | |
| | | | 213.6-213.9 alt. f.gr. seds, mottled 213.9-214.4 granitic texture m.gr. 214.4-215.4 lightly altered-mottled dark green pink skarn TOP contact Gradational, BOTTOM contact @ 20° | | | | 96748 | 214.2-215.4 | 0.10 | | | | | | |
| 215.4 | 219.1 | 3.7 | ARGILLITE WITH MINOR SILTSTONE, med grey slightly altered. Bedding 5° to 10° to ca. 217.6 - 219.1: core rubbly | | | | | | | | | | | | |

NORANDA EXPLORATION COMPANY LTD.

| Date Collared | | Date Completed | | Core Size | | DIP TESTS | | | | PROPERTY BANBURY | | PROJECT No. 1.53 | | N.T.S. No. | | |
|--------------------|-------|----------------|--|-----------|---------|-----------|----------|------------|-----------------------|----------------------------|----------------|------------------|----------------|-----------------|-----|--|
| FIELD CO-ORDINATES | | | | DEPTH | BEARING | | ANGLE | | SURVEYED CO-ORDINATES | | | | Sheet 10 of 16 | | | |
| Lat. | | Elev. | | | Dip | | RECORDED | CORRECTED | RECORDED | CORRECTED | Lat. | | Elev. | | Dip | |
| Dep. | | Length | | Bearing | | 1134' | 359.5° | | | -49° | | | | HOLE No. NB86-3 | | |
| From | To | Recovery | Description | | | Structure | % Sulph. | Est. Grade | SAMPLE No. | Width | ASSAYS | | | | | |
| | | | | | | | | | | | | | | | | |
| 219.1 | 221.6 | 2.5 | PORPHYRITIC DIORITE 2% dissem. py. grey-brown Fine gr. ground mass- 80% Hornblende Phenos 2-5mm 10% Rounded Feldspar Phenos 10% | | | | | | 96749 96750 | 219.1-220.5 220.5-221.6 | < 0.07 0.14 | | | | | |
| | | | 219.1 - 220.5 hard, intact, minor alteration 220.5-221.6 soft, altered, kaolinized, blocky lcm Qz Sx @ 70° @ 220.8 UPPER CONTACT @ 10°; LOWER CONTACT SHEARED | | | | | | | | | | | | | |
| 221.6 | 222.1 | .5 | ARGILLITE & ALT. SEDS mid grey Minor Qz Sx | | | | | | 77001 | 221.6-222.1 | < 0.07 | | | | | |
| 222.1 | 224.0 | 1.9 | DIORITE Porphyritic, as from 219.1-221.6 222.1-222.5 bleached & pulverized with lcm Qz - Apy | | | | | | 77002 | 222.1-222.5 | 0.45 | | | | | |
| | | | TOP CONTACT sheared @ 50° BOTTOM CONTACT - irregular, low angle | | | | | | 77003 | 222.5-224.0 | < 0.07 | | | | | |
| 224.0 | 225.1 | 1.1 | SKARN GREEN, mottled. banding @ 05 to 15° to c.a. 2% Sx. 5% 2-3mm garnets | | | | | | 77004 | 224.0-225.1 | < 0.07 | | | | | |
| 225.1 | 226.0 | .9 | PORPHYRITIC DIORITE As from 222.1-224.0 Upper contact irregular - 10-20°? Lower contact @ 35° | | | | | | | | | | | | | |
| 226.0 | 232.8 | 6.8 | SILICEOUS ARGILLITE AND ALTERED ARGILLITE Grey to green, slightly mottled 2% Sx Banded @ 0 - 10° to c.a. Progressively more altered to bottom of section. | | | | | | | | | | | | | |

NORANDA EXPLORATION COMPANY LTD.

| Date Collared | | Date Completed | | Core Size | | DIP TESTS | | | | PROPERTY BANBURY | | | PROJECT No. 1.53 | | N.T.S. No. | | | | | | |
|--------------------|-------|----------------|---|-----------|--|-------------|--|-----------|--|-----------------------|-------|-------------|------------------|----------------|------------|----------|---------|-----|--|--|--|
| FIELD CO-ORDINATES | | | | DEPTH | | BEARING | | ANGLE | | SURVEYED CO-ORDINATES | | | | Sheet 11 of 16 | | | | | | | |
| Lat. | | Elev. | | Dip | | RECORDED | | CORRECTED | | RECORDED | | CORRECTED | | Lat. | | Elev. | | Dip | | | |
| Dep. | | Length | | Bearing | | | | | | Dep. | | Length | | Bearing | | HOLE No. | | | | | |
| | | | | | | | | | | | | | | | | NB86-3 | | | | | |
| From | | To | | Recovery | | Description | | | | Structure | | % Sulph. | Est. Grade | SAMPLE No. | Width | | ASSAYS | | | | |
| | | | | | | | | | | | | | | | | | Au(gmt) | | | | |
| 232.8 | 233.6 | .8 | PORPHYRITIC DIORITE F.gr. grey groundmass and 5% Hb.phenos & 10% rounded feldspar Phenos 2-4mm. Slightly magnetic 2% pyrrhotite Brownish grey cast. Top contact @ 45°; Bottom contact @ 70°, irregular | | | | | | | | | | | | | | | | | | |
| 233.6 | 236.9 | 3.0 | ALTERED SILICIFIED SEDIMENTS WITH SKARN 233.6-233.9 - Silicified, vfg., 2% py in fractures med.grey 233.9-234.9 - As from 233.6-233.9, with skarn @ v.low angle (2° - 3°) @ 234.9 lcm Qz with 40% py, trace Apy 234.9 - 235.5 SKARN: green, mottled, 30% garnets 235.5 - 235.7 - Porphyritic Diorite @ 25° 235.7 - 236.0 - Skarn: green, mottled - 30% m.gr. farnets 236.0- 236.9 - altered silicified v.f.g. seds. bedded at 10° to c.a. Contact with Skarn @ 20° | | | | | | | | 77005 | 233.6-233.9 | | <0.07 | | | | | | | |
| | | | | | | | | | | | 77006 | 233.9-234.9 | | <0.07 | | | | | | | |
| | | | | | | | | | | | 77007 | 234.9-236.0 | | <0.07 | | | | | | | |
| | | | | | | | | | | | 77008 | 236.0-236.9 | | <0.07 | | | | | | | |
| 236.9 | 241.0 | 4.1 | DIORITE Med.grained, bluish-grey 50% Hornblende, 2% fine disseminated pyrrhotite MAGNETIC 240.5 - 241.0 - lighter, more siliceous Top contact @ 35°; Bottom contact @ 45°, irregular | | | | | | | | | | | | | | | | | | |
| 241.0 | 245.9 | 4.9 | ARGILLITE & ALTERED V.F.G. SEDIMENTS grey-greenish-brown, mottled 1-2% py. Bedding @ 245.1 - 05 | | | | | | | | | | | | | | | | | | |
| 245.9 | 247.6 | 1.7 | PORPHYRITIC DIORITE variable texture, mottled, altered, greenish 246.4-246.6 - sheared with 3 cm Qz-Py /& brownish A trace of Sx throughout. Bottom contact @ 25° | | | | | | | | 77009 | 245.9-247.6 | | <0.07 | | | | | | | |

NORANDA EXPLORATION COMPANY LTD.

| Date Collared | | Date Completed | | Core Size | | DIP TESTS | | | | PROPERTY BANBURY | | PROJECT No. 1.53 | | N.T.S. No. | |
|--------------------|-------|----------------|--|-----------|--|-----------|--|-----------|------------|-----------------------|--------------|---------------------|--|----------------|--|
| FIELD CO-ORDINATES | | | | DEPTH | | BEARING | | ANGLE | | SURVEYED CO-ORDINATES | | | | Sheet 12 of 16 | |
| Lat. | | Elev. | | Dip | | RECORDED | | CORRECTED | | RECORDED | | CORRECTED | | HOLE No. | |
| Dep. | | Length | | Bearing | | | | | | Dep. | | Length | | NB86-3 | |
| From | To | Recovery | Description | | | Structure | | % Sulph. | Est. Grade | SAMPLE No. | Width | ASSAYS | | | |
| | | | | | | | | | | | | Au(gmt) | | | |
| 247.6 | 249.7 | 2.1 | ALTERED SEDIMENTS & SKARN | | | | | | | 77010 | g247.6-247.9 | 0.07 | | | |
| | | hard dense | 247.6-247.9 - Altered & siliceous grey-green f.gr. seds | | | | | | | 77011 | 247.9-248.2 | 0.07 | | | |
| | | | 247.9-248.2 - Mottled-green black-med.gr. Skarn | | | | | | | 77012 | 248.2-249.3 | 0.07 | | | |
| | | | 248.2-249.3 - green garnet Skarn 3% pyrrhotite(po) | | | | | | | 77013 | g249.3-249.5 | 0.07 | | | |
| | | | 249.3-249.5 - " " 15% pyrrhotite highly MAGNETIC | | | | | | | 77014 | 249.5-249.7 | 0.07 | | | |
| | | | 249.5-249.7 - Arg. & siliceous grey green f.gr. seds 3% py-po | | | | | | | | | | | | |
| 249.7 | 255.1 | 5.4 | DIORITE M.gr.-slightly porphyritic | | | | | | | | | | | | |
| | | | 40% mafics (Hornblende), grey-blue to grey-brown with buff(Kaolinized) streaks & zones | | | | | | | | | | | | |
| | | | Tr. py., Top contact-30°, Bottom contact 25° | | | | | | | | | | | | |
| 255.1 | 257.8 | 2.7 | ARGILLITE & ALTERED SEDS grey to greenish | | | | | | | | | | | | |
| | | | Bedding 25° @ 256.5 | | | | | | | | | | | | |
| | | | 30° @ 256.8 | | | | | | | 77015 | 256.9-257.1 | 0.55 | | | |
| | | | 256.9-257.1 SKARN mottled green black 5% py-po | | | | | | | 77016 | 257.1-257.8 | 0.07 | | | |
| 257.8 | 265.1 | 7.3 | SKARN & HIGHLY ALTERED SEDIMENTS mottled variable appearance | | | | | | | 77017 | 257.8-258.8 | 0.07 | | | |
| | | | 257.8-258.8 - light greenish grey fine-med.grained, 3% pyrrhotite, weakly magnetic | | | | | | | 77018 | 258.8-259.4 | 0.14 | | | |
| | | | 258.8-259.4 - green Skarn with black streaks fine to m.gr. | | | | | | | 77019 | 259.4-259.7 | 0.17 | | | |
| | | | 5% Sx | | | | | | | 77020 | 259.7-260.4 | 0.14 | | | |
| | | | 259.4-259.7 - green Skarn 10% Po in fractures & blebs weakly magnetic | | | | | | | 77021 | 260.4-261.7 | 0.17 | | | |
| | | | 259.7-260.4 - as from 258.8-259.4 | | | | | | | 77022 | 261.7-263.6 | 0.17 | | | |
| | | | 260.4-261.7 - mottled, green & black Sx? 10% Sx | | | | | | | 77023 | 263.6-264.3 | 0.07 | | | |
| | | | 261.7-263.6 - mottled dark-green-black, buff-grey 5% Sx | | | | | | | 77024 | 264.3-265.1 | 3.39 | | | |
| | | | 263.6-264.3 altered diorite m.gr. - 40% mafics (biotitized hornblende) | | | | | | | | | | | | |
| | | | 264.3-265.1 mottled grey-green w. 5% Sx? | | | | | | | | | | | | |

NORANDA EXPLORATION COMPANY LTD.

| Date Collared | | Date Completed | | Core Size | | DIP TESTS | | | | PROPERTY BANBURY | | PROJECT No. 1.53 | | N.T.S. No. | | |
|--------------------|-------|----------------|--|-----------|--|-----------|--|-----------|------------|-----------------------|-------------|------------------|--|----------------|-------|--|
| FIELD CO-ORDINATES | | | | DEPTH | | BEARING | | ANGLE | | SURVEYED CO-ORDINATES | | | | Sheet 13 of 16 | | |
| Lat. | | Elev. | | Dip | | RECORDED | | CORRECTED | | RECORDED | | CORRECTED | | HOLE No. | | |
| Dep. | | Length | | Bearing | | | | | | Dep. | | Length | | NB86-3 | | |
| From | To | Recovery | Description | | | Structure | | % Sulph. | Est. Grade | SAMPLE No. | Width | ASSAYS | | | | |
| | | | | | | | | | | | | | | | | |
| 265.1 | 278.9 | 13.8 | ARGILLITE AND ALTERED SEDIMENTS and minor SKARNIFIED BEDS dark grey, greenish, pinkish brown, banded and mottled 266.1-266.7 Skarn bed-garnets 2-10mm 30% in green f.g.matrix | | | | | | | 77025 | 266.1-266.7 | | | | <0.07 | |
| | | | 270.3-270.6 Skarn zone - mottled green and pinkish with 10% calcite stringers 5% py-po | | | | | | | 77026 | 270.3-270.6 | | | | 0.07 | |
| | | | 273.7-274.2 - Skarn bed, 5% py in fractures, tr. cpy green-pink-black mottled | | | | | | | 77027 | 273.7-274.2 | | | | 0.07 | |
| | | | 275.8-275.9 and 276.1-276.2 mottled skarns, 4% Sx Appears that fluids have moved up along bedding planes, altering, bleaching & skarnifying the zone. | | | | | | | | | | | | | |
| | | | Bedding: 15° @ 265.5 | | | | | | | | | | | | | |
| | | | 25° @ 267.2 | | | | | | | | | | | | | |
| | | | 15° @ 269.0 | | | | | | | | | | | | | |
| | | | 20° @ 272.0 | | | | | | | | | | | | | |
| | | | 40° @ 273.4 | | | | | | | | | | | | | |
| | | | 25° @ 275.0 | | | | | | | | | | | | | |
| | | | 35° @ 277.2 | | | | | | | | | | | | | |
| | | | 277.1 - 277.6 Skarnified zone-mottled & banded grey-pink-green 3% Sx | | | | | | | 77028 | 277.1-277.6 | | | | 0.48 | |
| 278.9 | 279.1 | .2 | SULPHIDES IN QUARTZ & CALCITE 20cm wide 80% Sx as follows: 60% Py slightly magnetic 10% Apy similar to Pine Knot Vein 5% Sphal High grade zones 5% Po Trace GAL TOP contact @ 65°; BOTTOM contact rubbly - probably 65° | | | | | | | 77029 | 278.9-279.1 | | | | 7.82 | |

NORANDA EXPLORATION COMPANY LTD.

| Date Collared | | Date Completed | | Core Size | | DIP TESTS | | | | PROPERTY BANBURY | | PROJECT No. 1.53 | | N.T.S. No. | |
|--------------------|-------|----------------|--|-----------|---------|-----------|----------|------------|-----------------------|----------------------------|----------------|------------------|----------------|------------|-----|
| FIELD CO-ORDINATES | | | | DEPTH | BEARING | | ANGLE | | SURVEYED CO-ORDINATES | | | | Sheet 14 of 16 | | |
| Lat. | | Elev. | | | Dip | | RECORDED | CORRECTED | RECORDED | CORRECTED | Lat. | | Elev. | | Dip |
| Dep. | | Length | | Bearing | | | | | | Dep. | | Length | | Bearing | |
| From | To | Recovery | Description | | | Structure | % Sulph. | Est. Grade | SAMPLE No. | Width | ASSAYS | | | | |
| | | | | | | | | | | | | | | | |
| 279.1 | 280.0 | .9 | DIORITE Soft-m.gr. altered Buff colour. 3% dissem. apy & py. | | | | | | 77030 | 279.1-280.0 | 0.10 | | | | |
| 280.0 | 281.4 | 1.4 | ALTERED FRACTURED SEDIMENTS - mid grey-brownish 3% Py on fractures | | | | | | 77031 | 280.0-281.4 | 0.79 | | | | |
| 281.4 | 283.8 | 2.4 | ALTERED DIORITE Brownish-pink, Mgr:10% Qz-Sx stringers 2cm - 10 cm wide at all angles to core Py, - with minor Apy and trace Cpy make up 5% of rock. Contacts irregular | | | | | | 77032 77033 | 281.4-283.0 283.0-283.8 | <0.07 <0.07 | | | | |
| 283.8 | 292.9 | 9.1 | ALTERED SEDIMENTS grey brown, v.f.g. to f.g. 283.8-284.9 - 5% Cal-qz, stringer w. 4% py 1-5mm 284.9-285.3 - 15% Cal-qz, stringer with 5% py altered and mottled green-brown | | | | | | 77034 77035 | 283.8-284.9 284.9-285.3 | 0.07 <0.07 | | | | |
| | | | 285.3-285.9 as from 283.8-284.9 285.9-286.5 - 5% py - skarnified | | | | | | 77036 77037 | 285.3-285.9 285.9-286.5 | <0.07 <0.07 | | | | |
| | | | @ 287.5 - 5cm diorite | | | | | | | | | | | | |
| | | | 291.6-291.9 - green pink Skarn minor calcite 4% Sx 291.9-292.9 - green-brown sed with alt. diorite BOTTOM contact sharp, with 1 cm cal-qz-py @ 60° | | | | | | 77038 | 291.6-292.9 | 0.10 | | | | |
| 292.9 | 360.9 | 68.0 | DIORITE med-grained-grey altered zones, 60% hornblende-basically unaltered | | | | | | | | | | | | |
| | | | 292.9-294.0 - altered buff-brown with 10% qz stringers @ 65° . 5% py-po .5-1 cm | | | | | | 77039 | 292.9-294.0 | <0.07 | | | | |
| | | | 294.6-300.6 - several qz-cal-py-po stringers 0.5-1.5cm wide at all angles | | | | | | | | | | | | |

NORANDA EXPLORATION COMPANY LTD.

| Date Collared | | Date Completed | | Core Size | | DIP TESTS | | | | PROPERTY BANBURY | | PROJECT No. 1.53 | | N.T.S. No. | |
|--------------------|-------|----------------|--|-----------|--|-----------|----------|------------|------------|-----------------------|--------|------------------|-------|----------------|--|
| FIELD CO-ORDINATES | | | | DEPTH | | BEARING | | ANGLE | | SURVEYED CO-ORDINATES | | | | Sheet 15 of 16 | |
| Lat. | | Elev. | | Dip | | RECORDED | | CORRECTED | | RECORDED | | CORRECTED | | HOLE No. | |
| Dep. | | Length | | Bearing | | | | | | Dep. | | Length | | NB86-3 | |
| From | To | Recovery | Description | | | Structure | % Sulph. | Est. Grade | SAMPLE No. | Width | ASSAYS | | | | |
| | | | | | | | | | | | | | | | |
| 292.9 | 360.9 | 68.0 | DIORITE (CONTINUED) | | | | | | 77040 | 300.6-302.0 | | | 0.10 | | |
| (continued) | | | 300.6-302.0 - altered, skarnified sed.? 5% pyrrhotite, MAGNETIC, 1% cpy greenish-black mottled-several quartz stringers 1-2cm @ 30° | | | | | | | | | | | | |
| | | | @ 303.4 2cm Qz-Sx @ 65° | | | | | | | | | | | | |
| | | | @ 304.1 1cm Qz @ 35° | | | | | | | | | | | | |
| | | | @ 306.9 1cm Qz-cal @ 35° | | | | | | | | | | | | |
| | | | @ 310.2 1cm Qz @ 25° | | | | | | | | | | | | |
| | | | @ 312.9 3cm Qz-alt. do, Sx @ 55° | | | | | | | | | | | | |
| | | | 321.7-321.1 - altered diorite with 10% qz-cal stringers at all angles to core 3cm qz-apy @ 321.7 | | | | | | 77041 | 321.7-321.73 | | | 1.51 | | |
| | | | 321.73-325.8 brownish, alt., with 10% Qz str. mainly at low angle (5-15°) to core | | | | | | 77042 | 321.73-324.0 | | | <0.07 | | |
| | | | 325.8-326.6 - mottled-pink-green Skarn 10% pyrrhotite, 1% cpy - MAGNETIC | | | | | | 77043 | 324.0-325.8 | | | 0.10 | | |
| | | | 326.6-327.4 - altered brown green f.gr. diorite | | | | | | 77044 | 325.8-326.6 | | | 0.07 | | |
| | | | 327.4-328.8 - altered green- 25% vug & qtz. - Sx. 2% py, trace cpy & po. quartz @ 5° to 10° to c.a. | | | | | | 77045 | 326.6-327.4 | | | <0.07 | | |
| | | | @ 329.6 1cm qtz @ 15° | | | | | | 77046 | 327.4-328.8 | | | <0.07 | | |
| | | | @ 331.2 10cm qtz, minor calcite 1% apy @ 70° | | | | | | | | | | | | |
| | | | @ 332.2 - 40cm? heavy Sx in Qz | | | | | | | | | | | | |
| | | | * NOTE: 10% py, 30% apy, 5% po, 2% Sphal. | | | | | | | | | | | | |
| | | | CORE COMES 1% cpy | | | | | | 77047 | 331.2-331.3 | | | 0.21 | | |
| | | | FROM 279m * from cored zone @ 278.9-279.1m | | | | | | | | | | | | |
| | | | | | | | | | 77048 | 332.2-332.6 | | | 4.25 | | |

NORANDA EXPLORATION COMPANY LTD.

| Date Collared | | Date Completed May 19/86 | | Core Size NQ | | DIP TESTS | | | | PROPERTY BANBURY | | PROJECT No. 1.53 | | N.T.S. No. | |
|--------------------|-------|-----------------------------|---|-----------------|----------|-----------|-----------|------------|-----------------------|---------------------|-----------|---------------------|--------------------|------------|--|
| FIELD CO-ORDINATES | | | | DEPTH | BEARING | | ANGLE | | SURVEYED CO-ORDINATES | | | | Sheet 16 of 16 | | |
| Lat. | | Elev. | | | RECORDED | | CORRECTED | | RECORDED | | CORRECTED | | HOLE No. NB86-3 | | |
| Dep. | | Length 360.9m | | Dip | | Bearing | | Dep. | | Length | | Bearing | | | |
| From | To | Recovery | Description | | | Structure | % Sulph. | Est. Grade | SAMPLE No. | Width | ASSAYS | | | | |
| | | | | | | | | | | | | | | | |
| 292.9 | 360.9 | | DIORITE (CONTINUED) | | | | | | | | | | | | |
| (CONTINUED) | | | @ 337.7 - 2cm heavy Sx in Qz (knocked down from cave @ 283.5??) | | | | | | | | | | | | |
| | | | @ 338.2 20cm Qz and silicified, bleached diorite with 2% Sx @ 30° | | | | | | | | | | | | |
| | | | 338.2-360.9 3% Qz stringers with minor Sx .5-2cm wide generally @ 25-30° to c.a. | | | | | | | | | | | | |
| | | | E.O.H. @ 360.9 | | | | | | | | | | | | |
| | | | | | | | | | | | | | | | |
| | | | | | | | | | | | | | | | |
| | | | | | | | | | | | | | | | |
| | | | | | | | | | | | | | | | |
| | | | | | | | | | | | | | | | |
| | | | | | | | | | | | | | | | |