

A REPORT ON THE GEOCHEMICAL
SURVEY ON
SLEWESIN PROPERTY, NAKUSP AREA
SLOCAN MINING DIVISION

NTS 82 K/4E

50° ~~40'30"~~ ; 117° ~~39'45"~~
05.2' 39'

For

Owner/Operator: TILLICUM GOLD MINES LTD.
730 - 580 HORNBY STREET
VANCOUVER, BRITISH COLUMBIA

BY

J.W. GEORGE (GEOLOGIST)

NOVEMBER 26, 1986

MINISTRY OF ENERGY, MINES
AND PETROLEUM RESOURCES
Rec'd DEC 2 1986
SUBJECT _____
FILE _____
VANCOUVER, B.C.

GEOLOGICAL BRANCH
ASSESSMENT REPORT

15,625

FILMED

TABLE OF CONTENTS

	PAGE
Introduction	1
Location	1
-Map (Fig.1)	1a
Topography	1
Ownership	2
-List of Claims	2
-Map (Fig.2)	2a
History	2
Geology	3
-Map (Fig. 3)	3a
Geochemical Survey	4
Results	4
-Assays	Appendix I
-Map 1	Rear Pouch
Interpretations	5
Discussion	5
Conclusion	5
Itemized Cost Statement	6
Author's Qualifications	7

INTRODUCTION

This report is an evaluation of a geochemical survey carried out on the Sleweskin Group of mineral claims between August 18 and August 22, 1986.

LOCATION

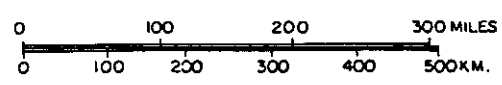
The Sleweskin property is located 20 kilometers southeast of Nakusp, B.C., on the eastern slope of Silver Mountain. It is readily accessible from Nakusp via Highway #6, the Sleweskin Creek forest access road and numerous good logging roads. (Fig.1)

TOPOGRAPHY

Topography is moderate to steep and the area is heavily forested. A considerable part of the lower slopes have been recently logged. Elevations on the property range from 1200 m to 2440 m.



**PROPERTY
LOCATION**



TILLICUM GOLD MINES LTD.		
G. A. NOEL & ASSOCIATES INC.		VANCOUVER, B.C.
SLEWISKIN PROPERTY LOCATION MAP		
NAKUSP AREA		— SLOCAN M.D., B.C.
SCALE AS SHOWN	APRIL 1984	FIG. 1
H.M.J.		

OWNERSHIP

All claims are 100% owned by Tillicum Gold Mines Ltd.
730 - 580 Hornby Street, Vancouver, British Columbia.

The following is a list of the claims within the Sleweskin Group. (Fig.2)

<u>CLAIM NAME</u>	<u>RECORD NUMBER</u>	<u>UNITS</u>	<u>DATE OF RECORD</u>
SUNSHINE	4084	15	SEPT. 23, 1983
DORE	4085	6	"
SUB 1	4086	6	"
SUB 2	4087	4	"

These claims were all grouped into the Sleweskin Group in September, 1983. A survey, carried out in 1983, indicated considerable overstaking in the area. To remedy the land situation all but one of the original claims owned by Tillicum were abandoned and restaked between September 12 to 22, 1983.

HISTORY

The general area of the property was actively placered between the late 1800's and early 1900's. This work was centered around Burton, 19km southwest of the property. Following the termination of placer mining, activity persisted in the area until 1930. During this period, a number of small gold and silver prospects were discovered and worked. The area became active again in 1980 after the discovery of a spectacular gold occurrence on Tillicum Mountain.

117°40'

SLEWISKIN CREEK

SUNSHINE

DORE

SUB 2

SUB 1

Shannon Cr.

50° 05'

CARIBOU CREEK

♂ LEGAL CORNER POST



TILLICUM GOLD MINES LTD

G.A. NOEL & ASSOCIATES INC. VANCOUVER, B.C.

SLEWISKIN PROPERTY
CLAIM MAP

NAKUSP AREA — SLOCAN M.D., B.C.

0 1 2 3 KM

SCALE 1:50,000

H.M.J.

APRIL 1984

FIG 2

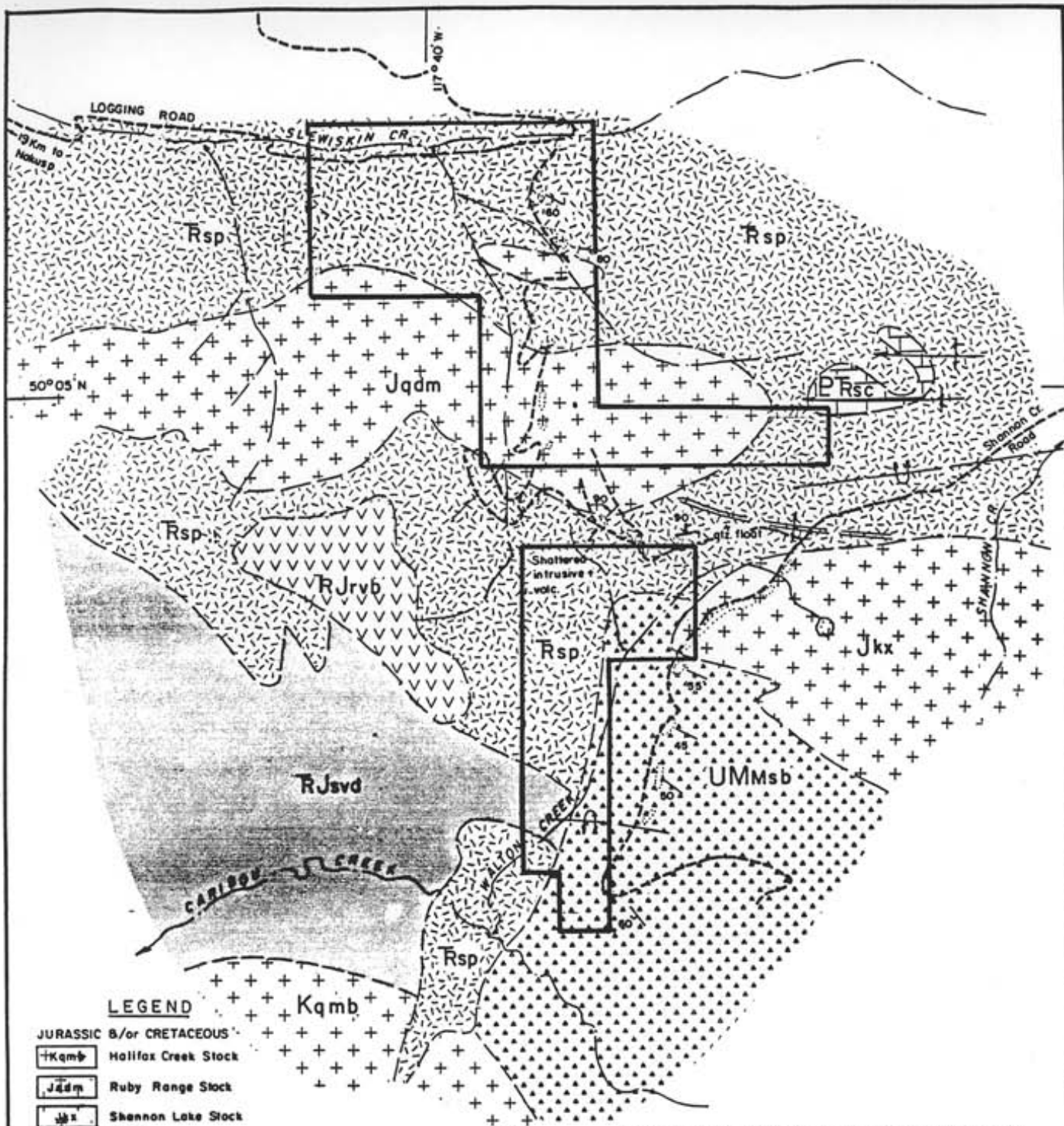
GEOLOGY

The geology of the area (Fig. 3) includes Upper Missippian to Pennsylvanian or Permian Milford Group and Triassic to Lower Jurassic Slocan Group Metavolcanis, metasediments, sediments and flows. They lie in a Northwesterly-trending belt between the Slocan syncline to the north and the Valhalla dome to the south.

The structure of the area is complex and several periods of folding have been suggested. A generally easterly trend is developed about axial planes which dip to the north and are overturned increasingly southward towards the Valhalla Dome.

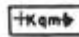


Intrusive rocks post-date the folding events. Jurassic and/or Cretaceous stocks envelop the Milford and Slocan Groups, as well as occurring within them as small stocks or plugs. A considerable part of the property is covered by alluvium which could mask other small stocks or plugs.

Several intrusive Slocan Group contacts occur on the northern part of the Sleweskin property, and one intrusive Milford Group contact is located on or near the southeastern claim boundary.




LEGEND



JURASSIC &/or CRETACEOUS

-  Halifax Creek Stock
-  Ruby Range Stock
-  Shennon Lake Stock


LOWER JURASSIC

-  Rossland Group


TRIASSIC TO LOWER JURASSIC - Slocan Group

-  Meta-andesite to metadacite, tuffs, flows
-  Pelitic to silty phyllite & slate, argillite; shale to siltstone, tuff

UPPER MISSISSIPPIAN TO PENNSYLVANIAN OR PERMIAN

-  Millford Group

PROTEROZOIC TO TRIASSIC

-  Shuswap Metamorphic Complex

-  Outcrop
-  Bedding, banding
-  Shearing
-  Phase I folds
-  Phase II folds
-  Overturned antiform
-  Property outline

Note: Map courtesy La Tako Resources Ltd. with slight modifications by H. Jones, 1983

TILlicum GOLD MINES LTD.

G.A. NOEL & ASSOCIATES INC. VANCOUVER, B.C.

**SLEWISKIN PROPERTY
GEOLOGY MAP**

NAKUSP AREA - SLOCAN M.D., B.C.



SCALE 1:50,000

APRIL 1984

FIG. 3

H.M.J.

GEOCHEMICAL SURVEY

A geochemical survey was carried out on the Sleweskin Group between August 18 and August 22 to extend an area previously found to have anomalous values of gold. A total of 18 samples were collected by a two-man crew under the supervision of the author.

Samples were gathered along control lines with a spacing of 100 meters at intervals of 50 meters. B Horizon material, located between 24 cm to 40 cm below surface, was sampled to avoid organic rich topsoil and leached upper sub-soil.

Samples were stored in Kraft paper bags and submitted to Acme Analytical Labs for analysis for gold content.

RESULTS

Analyses of the soil samples were performed by Acme Analytical Labs and are listed in Appendix 1.

The results are plotted on Map 1 in the rear pouch, and show sample sites, analytical results, survey lines and claim boundaries.

INTERPRETATIONS

Soil samples were analyzed by atomic absorption for gold. Previous surveys indicate a background value for gold as 6 ppb in the survey area. Threshold has been determined to be 23 ppb-au, and values above threshold are considered anomalous.

DISCUSSION

The purpose of the survey was to extend an anomalous zone found directly west, below the ridge on the Dore claims. Previous work suggested an anomaly open to the northeast where quartz veins intrude the Ruby Rouge stock. However, low values obtained in the survey point to a small localized source on the west of the ridge.

CONCLUSION

A Geochemical survey carried out on the Sleweskin claims obtained low values in gold.

Renewed efforts in exploration should therefore be concentrated on possible North-South extensions of an anomalous zone located on the Dove claims.

I, Jonathan W. George, certify to the following:

1. I am a geologist with:

Tillicum Gold Mines Ltd.
Suite 730 - 580 Hornby Street
Vancouver, British Columbia

2. My academic qualifications are:

B.Sc. (Geology)
Western Washington University
Bellingham, Washington

3. I have been engaged in geological work for the past seven years.

4. I am a director and major shareholder of Tillicum Gold Mines Ltd.

5. Tillicum Gold Mines Ltd. has the sole right to the use of this report in any activities pertaining to the properties herein discussed.


Jonathan W. George

DATED: November 25, 1986

A P P E N D I X I

ACME ANALYTICAL LABORATORIES LTD.
852 E. HASTINGS, VANCOUVER B.C.
PH: (604)253-3158 COMPUTER LINE:251-1011

DATE RECEIVED AUG 22 1986

DATE REPORTS MAILED Aug 28/86

GEOCHEMICAL ASSAY CERTIFICATE

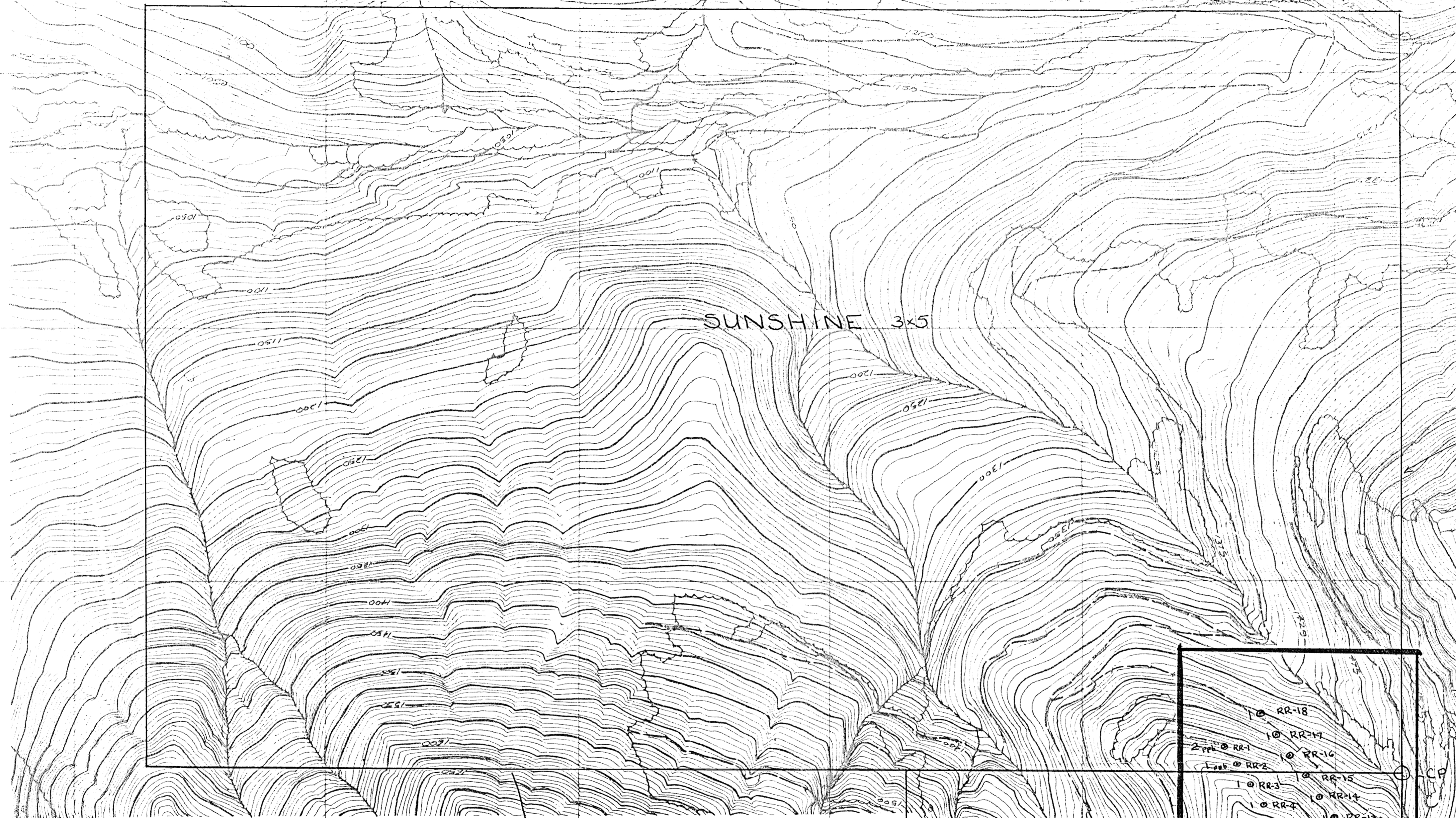
SAMPLE TYPE : SOIL - DRIED AT 60 DEG C. , -80 MESH,
Au* - 10 GM,IGNITED, HOT AQUA REGIA LEACHED, NIBK EXTRACTION, AA ANALYSIS.

ASSAYER Deane Toye DEAN TOYE . CERTIFIED B.C. ASSAYER

TILLICUM GOLD MINES FILE# 86-2208

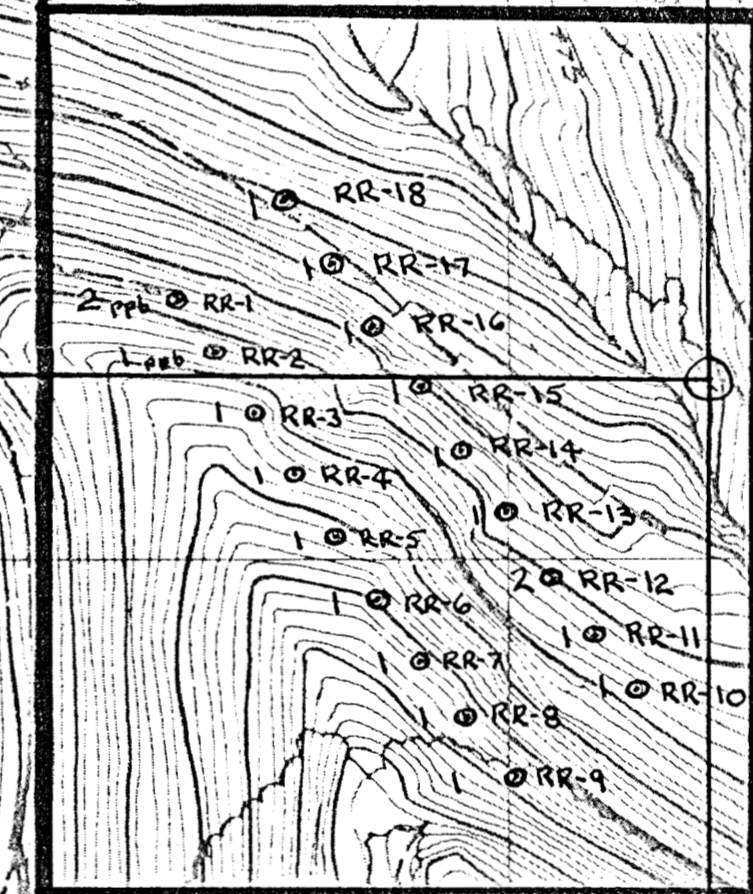
PAGE# 1

SAMPLE	Au* ppb
RR-1	2
RR-2	1
RR-3	1
RR-4	1
RR-5	1
RR-6	1
RR-7	1
RR-8	1
RR-9	1
RR-10	1
RR-11	1
RR-12	2
RR-13	1
RR-14	1
RR-15	1
RR-16	1
RR-17	1
RR-18	1



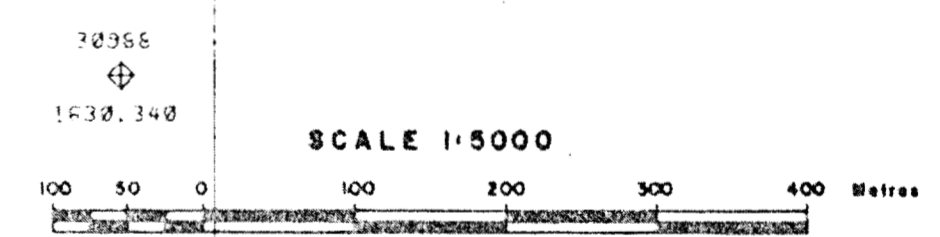
CLAIM BOUNDARY

CLAIM BOUNDARY



GEOCHEMICAL SURVEY (1986)
SLEWISKIN GROUP


SAMPLE NO.
J. GEORGE



3963
11-3-992

DORE 2x3

PRELIMINARY RECONNAISSANCE TYPE MAPPING
Control established from Data Book Transfer from Victoria, B.C.

TILlicum GOLD MINES LTD.	
SLEWISKIN GROUP	
 McElhanney Surveying & Engineering Ltd. 1100 Alberni Street, Vancouver, B.C., Canada Compiled from aerial photography taken in Sept. 1980 at an approximate scale of 1:40,000	
SCALE	1:5 000
DATE COMPILED	July 1985
CONTOUR INTERVAL	5 Metres
SHEET NUMBER	1 of 2

151625

GEOLOGICAL BRANCH
ASSESSMENT REPORT

SUB 2 1x4