

NORTH AIR MINES LTD. DRILL HOLE RECORD

INCLINATION		BEARING		PROPERTY: WILLA		LENGTH: 130.3		HOLE No. 86-113	
COLLAR	-9° 37' 04"	93° 49' 30"		LOCATION: 1000000 N		HOR. COMP: VERT. COMP:		Sheet: 1 of	
				ELEVATION: 1025m		BEARING: 94°		LOGGED BY: R.J. Beckett.	
200	-9-30			COORDINATES:		BEGAN: 08/12/62 COMPLETED:		SAMPLED BY: E. PIGOTT	
100	-8-00			EAST ZONE		CORE SIZE: 80		RECOVERY: 100%	

INTERVAL (Specify ft. or m) From To	RECOV.	DESCRIPTION	MINERALIZATION	GRAPHIC LOG	SAMPLES				ASSAYS (Specify %, oz/ton or gm/tonne)
					No.	From	To	Length	
0	30.0	<p><u>GREEN PYRITIC FELSIC FRAGMENTAL</u></p> <p>m-dk blue-grey; f-nar. massive f-nar felds porphyritic in part around mass; 10-30% sub angular frags 2-5cm; granitic 1-3% py diss; core broken 1-2m @ 30-60°; frags dk green green volc, 1/2 buff felds porph; fractures coated chlorite.</p> <p>11.9 1cm white gyp @ 40° 17.1 15cm bc. 17.2-17.6 1cm healed fracture, felds, mag. @ 75° 23.7 chlorite and gypsum coated fractures @ 25° H of gradational.</p>	<p>FILMED</p> <p>PART 20F2</p>						
30	40.6	<p><u>GREEN FELDSPAR PORPHYRIC</u></p> <p>Hard - arenous; f-nar - v hard; massive, occ. by frags 1-3cm; felds porphyritic, weakly pyritic disc 2-1% - 1%; core broken, 30-90°, fractures coated sugary gyp & minor calcite; some 1-2mm blackening adjacent to fractures; 0.1m. 1cm</p> <p>32.9-33.1 mag gyp coated fractures 38.4 3mm green talc on fracture @ 75° 38.0 20cm bc.</p>		<p>GEOLOGICAL BRANCH ASSESSMENT REPORT</p> <p>15.726</p>					
36	80.3	<p><u>BLUE GREY PYRITIC INTERMEDIATE FRAGMENTAL</u></p> <p>m blue grey - m grey; m-far; massive 10% sub angular frags mag dist throughout 1/2 - 10cm; occ. 1/2 pink cherty section 1/2 - 2cm; Min 3-1% py diss throughout. Frags pred dk greenish grey volcanic; comp - intermediate (amphibole?);</p> <p>42.0 3mm gyp & crushed rock @ 40° 42.0-47.2 m grey, far, hard felsic (dactyl), 47.5 2cm white gypsum striae & pyrite coated fractures @ 65° 48.1 2cm gypsum coated fractures @ 70° 52.0 2cm 3-5mm blebs black chlorite & pyrite, & chlorite coated striae @ 20° 56.11 gypsum 3mm fracture @ 70° 66.15-64.2 1/2 grey & far, hard, 10% indistinct felds porph. 57.55 2cm mag 1-2mm gypsum striae.</p>							

NORTHAIR MINES LTD. DRILL HOLE RECORD

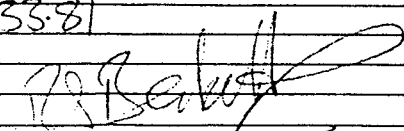
INCLINATION		BEARING		PROPERTY:	LENGTH:		HOLE No. 70-113	
COLLAR				LOCATION:	HOR. COMP.	VERT. COMP.	Sheet: 2 of 3	
				ELEVATION:	BEARING		LOGGED BY:	
				COORDINATES:	BEGAN:	COMPLETED:	SAMPLED BY:	
					CORE SIZE:	RECOVERY:		

INTERVAL (Specify ft. or m) From To	RECOV.	DESCRIPTION	MINERALIZATION	GRAPHIC LOG	SAMPLES				ASSAYS (Specify %, oz/ton or gm/tonne)		
					No.	From	To	Length	Au %	Cu %	
		64.1 0.4 in bc. pyrite chlorite coated fracture @ 20°									
		52.0 20cm rounded felds porph frag. 65.65-70.4 lamprophyre dyke. Oct ~ 90 Lct 45									
		70.54 1cm pink Kca str @ 70°									
		71.45 71.9 chlorite slips & pink pegmatite veins @ 30° Mn 2% py. Tr cp, gal. blebs - epidote - 3-10mm.									
		76.50 5cm dk green chlorite & gypsum @ 40°									
		77.40 4cm dk green chlorite & white gypsum strigs @ ~ 60°									
		73.70-76.4 lamprophyre dyke; Oct ~ 90°									
		73.8 2cm grey chlorite & white gypsum strigs. Lct 45.									
		76.4-78.9 irreg. mag. green; fair - v. gr. frag. white chlorite blebs in matrix.									
		78.0-80.3 6.5 1-3cm, blebs py 2-5mm, epidote 1-3mm									
		78.15 2cm irreg white gypsum str @ ~ 40°									
		78.9 2cm irreg chlorite & gypsum fractures. Oct sharp, angle obscured.									
80.3	133.81	GREY GREEN, FINE GRAINED MAFIC VOLCANIC m-dk green, fair - (occ. mag); massive; 30% pyroxene 10% biotite 50% felds; 10% qtz; occ. blebs & irreg strig epidote 2-5mm; coarse broken 0.1-0.3mm @ 30-60° fractures coated chlorite, ~1-2% pyrite dms & 1-3mm blebs throughout.									
		80.3-83.5 1-2mm irreg veinlets gypsum spaced 1-5cm apart.									
		83.9-84.6 blebs py, cp 2% & 1/2 green epidote.	Min 2% cp.		6931	84.0	85.0	1.0	.016	.20	
		86.5-87.8 1/2-1mm biotite crust.			6932	86.0	87.0	1.0	.006	.06	
		89.2-90.25 Min blebs py & ep 1/2-2cm; 5% cp; dk green chlorite Hms			6933	88.0	89.0	1.0	.005	.14	
		2.0mm - 3.0mm plinths			6934	89.0	90.0	1.0	.004	.11	
		90.3 2cm bleb py.			6935	88.0	89.0	1.0	.006	.13	
		90.8 - blebs coarse pyrite & chlorite 1/2-2cm; H grey green bleaching pt.			6936	89.0	90.0	1.0	.160	1.60	
		91.44 2cm blebs py & cp, & po	2cm cp blebs.		6937	90.0	91.0	1.0	.212	.86	
		91.6-93.0 irreg blebs & strigs pyrite & cp			6938	91.0	92.0	1.0	.518	1.60	
		92.0 4mm vein white gypsum @ 40°			6939	92.0	93.0	1.0	.116	.86	
		92.0-94.3 irreg 1/2-1cm H grey green bleached			6940	93.0	94.0	1.0	.028	.34	

1.23
0.252 / 4.0

NORTHAIR MINES LTD. DRILL HOLE RECORD

COLLAR		LOCATION:	HOR. COMP:	VERT. COMP:	WELL NO. 05-113
		ELEVATION:	BEARING:		Sheet: 3 of 3
		COORDINATES:	BEGAN:	COMPLETED:	LOGGED BY:
			CORE SIZE:	RECOVERY:	SAMPLED BY:

INTERVAL (Specify ft. or m) From To	RECOV.	DESCRIPTION	MINERALIZATION	GRAPHIC LOG	SAMPLES				ASSAYS (Specify %, oz/ton or gm/tonne)	
					No.	From	To	Length	Au %	Cu %
		SECTIONS								
93.5		lt grey green gypsum & chlorite fracture @ 40°								
95.1		ure. blebs epidote.								
95.6		ct between for volc & m-car volc downhole.								
97.5		3mm blue grey gypsum veinlet @ 75°								
98.6-103.6		irreg patches lt grey green silicified & epidotized alt. irreg 1/2-1mm green qtz veinlets & 2% py.			6941	99.0	100.0	1.0	.022	.22
					6942	100.0	101.0	1.0	.058	.42
					6943	101.0	102.0	1.0	.020	.14
101.9		3cm gypsum & chlorite @ 35°								
102.2		chlorite & qtz @ 50°								
104.7		irreg pink qtz, chlorite & py. over 2cm.								
106.7-111.4		clor massive, w/ly vitruv. filled with lt blue grey chalc. dr. & 1-2 mm blebs pyrite 3%. cts grad.								
112.2		1cm white qtz v @ 70°			6927	112	113	1.0	.010	.09
112-113		irreg green qtz string 3% diss py.								
114.2		1-3mm py. string @ 30° & blebs chalc. long.								
119.3-119.45		lt grey green for epidote & diss pyrite 2cm, 1cm white fibrous radiating mineral - soft & chalc. long & gypsum at 75°			6926	119	120	1.0	.005	.05
121.3-130.40		9% patchy lt green alt. & 1-3mm blebs pyrite, green areas 2mm-3cm wide & irregular.								
128.45		3cm white qtz vein & black chlorite @ 40°								
128.6		3cm bleb pyrite @ 40°								
130.0-130.2		lt grey green epidote & silica cts								
EOH 13381										
 Jan 7/87										

NORTHAIR MINES LTD. DRILL HOLE RECORD

INCLINATION		BEARING	PROPERTY:	LENGTH:	HOLE No. 87-114	
COLLAR			LOCATION:	HOR. COMP:	VERT. COMP:	Sheet: 2 of 3
			ELEVATION:	BEARING:		LOGGED BY:
			COORDINATES:	BEGAN:	COMPLETED:	SAMPLED BY:
				CORE SIZE:	RECOVERY:	

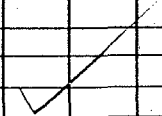
INTERVAL (Specify ft or m) From To	RECOV.	DESCRIPTION	MINERALIZATION	GRAPHIC LOG	SAMPLES				ASSAYS (Specify %, oz/ton or gm/tonne)	
					No.	From	To	Length	Au %	Cu %
60.5	87.8	<p><u>GREEN GREEN METACRYSTALLIC BRECCIA</u> m-dk grey brown, m grey green; f-mgr, mass-ineq blotchy text; angular - sub rounded fragments dk brown grey volc; qtz fold comp in m grey green felsic hard matrix. Occn blebs py 1/2-2cm throughout 2% py; 64.0-67.0 diss & blebs py 1-3%, 2% ep; irreg patches epidote 67.5 dk brown grey ang volc frags in m green matrix 72.0-73.5 lamprophyre dyke; vct 30cm bc. 1ct ~ 70° 75-76 occul 1/2cm blebs py 76-77 1-3cm clots py, tr ep. 79.65-80.9 lamprophyre dyke, string gouge. 1ct @ 40°; 1ct @ 35°</p>	<1% cp.							
					6946	64.0	65.0	1.0	.014	.14
					6947	65.0	66.0	1.0	.032	.18
					6948	66.0	67.0	1.0	.012	.13
					6949	75.0	76.0	1.0	.012	.06
					6950	76.0	77.0	1.0	.028	.23
87.8	113.6	<p><u>DARK GREEN-GRAY MEDIUM GRAINED MASSIVE MAFIC VOLCANIC</u> dk grey green a fncar, massive - wavy foliated, mt-mafic comp; foliation 40° @ 91.4; core broken 2-8m irreg fract; sparse <1% py diss, bract coating & blebs. irreg 1-3mm calcite & gypsum veinlets throughout; occul 1-0.3 in sections with 2-3mm qtz & chlorite filled amygdules. Fol 108.5-35° 1ct grad over 20cm. 87.8-90 irreg 1-3mm calcite - gypsum strg. 89.7 20cm irreg 1-3cm calcite - chlorite strg @ 35° 94.0 10cm interbanded qtz & vuggy epidote strg @ 40° 94.0-95.2 fgr massive 101.6 10cm bnd 30% 1/2-1cm vuggy bnd. Min py, cp; irreg gypsum strg; vugs - acicular clear crystals; bnd @ 35° 102.1-102.6 vuggy qtz, gypsum veinlets // to weak foliation. Min py, cp 104.8 vuggy, blue grey gypsum; Min py, cp. 5% @ 35° 104-105.2 coarsely bnded - foliated H area green - brown fgr; E shaped fragments, lapilli in f? 106.1 5cm H area epidote, qtz & gyps strgs @ 30° 110.2 20cm irreg H area epidote strg 112.5-20cm irreg H area epidote strg @ 40° 113.2 1cm white qtz strg @ 35°</p>	Py, cp.							
					6951	100	101	1.0	.06	.16
					6952	101	102	1.0	.023	.20
					6953	102	103	1.0	.152	.25
					6954	103	104	1.0	.024	.20
					6955	104	105	1.0	.026	.17
					6956	105	106	1.0	.013	.15

NORTHAIR MINES LTD. DRILL HOLE RECORD

INCLINATION	BEARING	PROPERTY:	LENGTH:	HOLE No. 87-114
COLLAR		LOCATION:	HOR. COMP:	VERT. COMP.:
		ELEVATION:	BEARING:	Sheet: 3 of 3
		COORDINATES:	BEGAN:	COMPLETED:
			CORE SIZE:	RECOVERY:
				LOGGED BY:
				SAMPLED BY:

INTERVAL (Specify ft. or m.) From To	RECOV.	DESCRIPTION	MINERALIZATION	GRAPHIC LOG	SAMPLES				ASSAYS (Specify %, oz/ton or gm/tonne)					
					No.	From	To	Length						
113-6121.5		CHALCOPYRITE, IRON, GYPSUM MINERALIZED VOLCANIC dk grey green f-massive - w/very blotchy text; ineg blebs white - lt blue area, gypsum 1/5% overall blebs 1-5cm; blebs & dust in 1/2-2cm 10%; thin diss & 1-3mm blebs cp; occul soil + black magnetic string; grey thin con oxidized sections throughout; - neg indistinct f-massive ct's gradual	py, cp, blebs 3% cp		6957	113	114	1.0	.012	.20				
					6958	114	115	1.0	.040	.22				
					6959	115	116	1.0	.080	.40				
					6960	116	117	1.0	.184	.70				
					6961	117	118	1.0	.190	1.06				
					6962	118	119	1.0	.160	.53				
					6963	119	120	1.0	.178	.42				
					6964	120	121	1.0	.060	.55				
					6965	121	122	1.0	.034	.30				
135.64		DARK GREEN, IRON MASSIVE, MAFIC VOLCANIC As above.												
		EOH 135.64												
		Back H												
		Jan 11/81												

178.63 / 4.0



NORTH AIR MINES LTD. DRILL HOLE RECORD

INCLINATION		BEARING		PROPERTY:		LENGTH:		HOLE No. 86-115	
COLLAR				LOCATION:		HOR. COMP: VERT. COMP:		Sheet: 2 of	
				ELEVATION:		BEARING:		LOGGED BY:	
				COORDINATES:		BEGAN: COMPLETED:		SAMPLED BY:	
						CORE SIZE: RECOVERY:			

INTERVAL (Specify ft. or m) From To	RECOV.	DESCRIPTION	MINERALIZATION	GRAPHIC LOG	SAMPLES				ASSAYS (Specify %, oz/ton or gm/tonne)		
					No.	From	To	Length	Au%	Cu%	
		massive, 20-30% subrounded-subangular frags, pred dk grey brown mgr augite mafic volc 60%, 30% H green green felds porph felsic 61.1 3-5 mm py str @ ~15° in plus chlorite 62.30 10 cm white qtz @ 30° Min 1% py. 64.00 two 3-5 mm gyp str @ 75° 66.75 1 cm gyp str @ 80° 69.6-69.9 lam porphyre dyke vct @ 85 / ct @ 85. 72.65-74.3 lam porphyre dyke vct sharp @ 70, 1 ct mgr 70°									
80.2	94.6	<u>DARK GREEN GREEN MASSIVE MAFIC VOLCANIC</u> dk grey green, ocaul H-green; fgr: massive, w/ly mod foliated; mod hard; irreg 1-3mm qtz veinlets throughout; ocaul blebs m green epidote 2-10mm; ocaul blebs gyp 3-10mm. foliation - elongated rounded frags? & H green epidote strgs irreg 1-3mm strgs gyp sum throughout @ 30-50°. lower ct sharp at 55° 80.2-80.7 H green, fgr, hard, possibly chilled ct! 82.0-82.6 b.c. 82.6-10a irreg blebs py @ 20° 82.8 3 cm b.c. & chlor slip @ 5° 82.8 irreg chlor slip @ 0° 86.6 2cm H green fgr epidotic qtz str @ 40° 90.30-90.70 H green epidote qtz pods Min 2% py. 97.6-98.2 H green epidote/qtz pods & stringers Min 2% py 100.2-101.4 80% H green qtz epidote rich pods mod fol @ 40° 103.6 10cm epidote-gyp @ 75° 92.8-8cm veinlet H green-white gyp sum @ 35°									
94.6	138.38	<u>DARK GREEN COARSE MAFIC VOLCANIC</u> dk green green mgr; massive, porphyritic in pt 10-20 % dk green amphi phenocrysts. 1-2% diss pyrite andesite - basalt comp.									

6629 97.6 91.0 1.0 .016 .11 ✓

NORTH AIR MINES LTD. DRILL HOLE RECORD

INCLINATION		BEARING		PROPERTY: WILLA		LENGTH: 64.62 m		HOLE No. 87-118	
COLLAR	+22°44'48"	269°59'10"	LOCATION: 1025 LEVEL		HOR. COMP: VERT. COMP:		Sheet: 1 of 2		
212'	+2.15°		ELEVATION: 505 South Dr St		BEARING: 269°59'10"		LOGGED BY: R J BECKETT		
			COORDINATES:		BEGAN: Jan 11/87 COMPLETED: Jan 12/87		SAMPLED BY:		
			SECTION 9925 N		CORE SIZE: 34 RECOVERY: 100%				

INTERVAL (Specify ft. or m) From To	RECOV.	DESCRIPTION	MINERALIZATION	GRAPHIC LOG	SAMPLES				ASSAYS (Specify % oz/ton or gm/tonne)			
					No.	From	To	Length	Ag ⁺	Cu ⁺	/checks	
0	11.4	<p><u>PYRITE CHALCOPYRITE MINERALISED FELDSPAR QUARTZ PORPHYRY CRACKLE BX</u></p> <p>H-med grey; v-fgr-fgr; hard-vhard; irregular coarse crackle bx text incg py & cp remnants between porphyry fragments; indistinct felds & Qtz phenocrysts; core broken - 1-5mm @ 40-60°; fract's coated gypsum; 5% inea blebs & diss py with 1-3mm epidote envelopes. 2-2mm fract py & cp @ 5°; sparse pyrrhotite. 2.9-3.3 coarse grained blebs py, cp 3-15mm 10% cp; in inea fractures; gyp fract's @ 45° 6.5-6.0 diss fgr py 10% cp 5% 6.3 bleb 1cm fgr diss py, cp. 6.5 bleb 1cm fgr diss cp. 7.0 3mm bleb cp. 7.8 blebs cp.</p>	<p>py, cp</p> <p>py, cp</p>		4833	0	1.0	1.0	182	1.14		
					354	1.0	2.0	1.0	.078	.49		
					355	2.0	2.9	0.9	.074	.56	.068	.57
					356	2.9	3.5	0.6	.674	2.60		
					357	3.5	4.0	0.5	.260	.98		
					358	4.5	5.5	1.0	.054	.23		
					359	5.5	6.0	0.5	.182	.98		
					360	6.0	7.0	1.0	.228	1.05	.238	1.10
					361	7.0	8.0	1.0	.152	.68		
					362	8.0	9.0	1.0	.158	.81		
					363	9.0	10.0	1.0	.098	.46		
					364	10.0	11.0	1.0	.106	.44		
					365	11.0	12.0	1.0	.068	.25	.030	.24
					366	12.0	13.0	1.0	.082	.45		
					367	13.0	14.1	1.1	.084	.23		
					368	14.1	14.7	0.6	.028	.35		
11.4	31.1	<p><u>HETEROLITHIC BRECCIA</u></p> <p>H grey, mgrey green-black; f-mgr; coarse luvy text heterolithic breccia; frags 2-20cm subangular pred. felds worph; biotitic volc & v-fgr hornfelsed volcanic/sediment; 3% pyrite-coarse blebs 1/2-1.5cm & sparse diss py bed on fractures; sparse po 2% coarse gr blebs; Min blebs cp; 1/2-1mm gypsum, sparse throughout. 14.8-14.5 Min blebs cp in 1-3mm wide fractures. 15.1 9cm lamprophyre dyke @ 45-60° 15.5 10cm blebs py cp 1/2-1cm 10% cp. 15.4 8cm lamprophyre @ 40° ct sharp 17.0-18.0 lamprophyre U ct 20° 1 ct obscured. 18.0-21.2 subrounded porphyry frags in dk brown biotitic matrix. 21.9-23.5 coarse interfragment blebs py, po very irregular & strechy; 21.0-21.8 dk brown fgr hornfelsed volc sed? 22.0-23.3 patches cgr, py, po and cp btwn frags. 25.0-26.5 lamprophyre U ct @ 50°, 1 ct 60° 27.3-29.5 3% diss py & 1% diss cp. 1/4-1mm diam. 28.9 5mm Qtz str. 30.3 slickenside - pyritic @ 15°; grooves at 85°</p>	<p>blebs cp, py, po</p> <p>cp.</p> <p>py, po, cp</p> <p>5% cp, 10% py, 10% po.</p>		* 369	14.7	15.5	0.8	.100	.33		
					370	15.5	16.0	0.5	.068	.52	.054	.48
					371	18.0	19.0	1.0	.056	.34		
					372	21.0	22.0	1.0	.012	.19		
					373	22.0	22.7	0.7	.040	.94		
					374	22.7	23.3	0.6	.077	.58		
					375	23.3	24.0	0.7	.005	.06	.008	.05
					376	24.0	25.0	1.0	.014	.10		
					377	26.5	27.5	1.0	.018	.27		
					378	27.5	28.5	1.0	.014	.32		
					379	28.5	29.5	1.0	.026	.35		
					* 380	14.7	15.5		.020	.23	.018	.22
31.1	44.3?	<p><u>GREY QUARTZ FELDSPAR FELSIC PORPHYRY</u></p> <p>mgrey; m-fgr; massive; felsic 70-90% hard grey, v-fgr-fgr felsic matrix + 10% indistinct Qtz & felds phenocrysts, Min 2% diss py, tr cp; core broken 2-5mm @</p>										

0.159, 0.06
/11c

checked
✓

NORTHAIR MINES LTD. DRILL HOLE RECORD

INCLINATION	BEARING	PROPERTY: WILLA	LENGTH: 28.35m	HOLE No. 87-119
COLLAR 456°23'54"	266°30'51"	LOCATION: 1025 LEVEL	HOR. COMP: VERT. COMP:	Sheet: 1 of 1
		ELEVATION: 950 S DRIFT	BEARING: 266°30'51"	LOGGED BY: KJ BECKETT
		COORDINATES: 9925N	BEGAN: Jan 12/87 COMPLETED: Jan 13/87	SAMPLED BY:
			CORE SIZE: B & C RECOVERY: ~100%	

INTERVAL (Specify ft. or m) From To	RECOV.	DESCRIPTION	MINERALIZATION	GRAPHIC LOG	SAMPLES				ASSAYS (Specify %, oz/ton or gm/tonne)				
					No.	From	To	Length	Ag %	Cu %			
0 28.34		MASSIVE GREY QUARTZ FELDSPAR PORPHYRY 11-m grey; v fine-gr. massive, v hard & silicified; 20% indistinct 1/2-1mm pbls phenocrysts in aphanitic matrix; 5% lt green green chlorite crystals; core broken 1/2-10cm irreg frags; sparse disseminated pyrite 1%; occn sections with indistinct grey quartz phenocrysts; occn patches 1-3cm lt green fine epidote & fine py & minor cp; sparse 1/2-1mm gypsum veinlets @ 75°; 9.9-13.5 irreg chlorite coated fract @ 0°; 7.3-19.0 b.d. 15.8 3cm epidote bleb diss py, minor cp. 20.0 py & epidote on fract @ 30° 21.7 irreg blebs epidote <u>lt</u> py, minor cp over 8cm. 24.2 3/4cm pyrite, qtz & epidote str @ 30°. 25.2 2cm bleb py & minor cp. .9 3-5mm gypsum veinlet <u>lt</u> , minor py, cp. @ 20° 13.4 1cm bleb epidote & diss py. EOH 28.35 KJ Beckett Jan 14/87											
					48393	0	1.0	1.0		008	.09		
					48394	1.0	2.0	1.0		022	.19		
					48395	2.0	3.0	1.0		010	.08	.008	.08
					48396	3.0	4.0	1.0		028	.19		
					48397	4.0	5.0	1.0		016	.14		
					48398	5.0	6.0	1.0		010	.11		

checked

NORTH AIR MINES LTD. DRILL HOLE RECORD

INCLINATION		BEARING	PROPERTY: WILLA.	LENGTH: 49.07	HOLE No. 87-121
COLLAR	(-26)		LOCATION: 9505 DR.	HOR. COMP:	VERT. COMP:
COLLAR	-26°16'35"	269°31'07"	ELEVATION: 1025m	BEARING: 270°	
191	-24.5°		COORDINATES:	BEGAN: 14/1/87	COMPLETED: 14/1/87
			SECTION 9925N	CORE SIZE: 80	RECOVERY: 100%
				Sheet: 1 of 2	
				LOGGED BY: R.J. BECKETT	
				SAMPLED BY: E. PIGOTT	

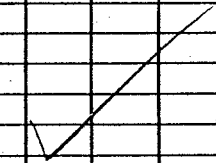
INTERVAL (Specify ft. or m) From To	RECOV.	DESCRIPTION	MINERALIZATION	GRAPHIC LOG	SAMPLES				ASSAYS (Specify %, oz/ton or gm/tonne)	
					No.	From	To	Length	Au %	Cu %
0	27.8	<p>PYRITE CHALCOPYRITE MINERALISED QUARTZ FELDSPAR PORPHYRY</p> <p>M grey; Fgr; massive; occul 1-2cm frag subrounded; 20-50% indistinct felds phenocrysts 5-10% qtz grains 1-3mm in f-vfgr felsic matrix. 1-2% qtz green 1/2-1mm biotite phenocrysts; hard; 3-10% pn; 1-3% cp as irregular ramifying veinlets & blebs; occul in 1-2mm wide fractures; Sulphides have irregular selvage chlorite & sparse magnetite. Sulphides have distinctive irreg bleb texture; core broken. 1-5 @ 30-70° fractures coated chlorite & gypsum; tight fractures - irreg at 30-60° coated 1/2-2mm magnetite. occul 1-2mm gypsum coated fractures @ 15-40°.</p> <p>4.0 3mm bleb cp. 4.2 3mm bleb cp on fracture at 70° 4.7 5mm bleb cp 4.8 2mm cp veinlet 5.6 4mm veinlet cp @ 30° 5.7 cp bleb 3mm 5.9 12cm irreg 1-4mm veinlets cp & magnetite. 6.0-7.3 6 blebs cp 2-5mm 9.3-10.6 10% pn 8% cp. blebs and in fractures. 12.8-13.52 lamprophyre dyke Uct @ 75°, 1 ct 75°. 14.5 3mm blebs cp. 11-16 less pn & cp ~ 2% pn 16.5-18.4 6% cp, 8% pn, 2% po, 2% mag 22.9-24.15 lamprophyre dyke. Uct irreg @ 80 1 ct sheared 2mm @ 85 22.2-22.5 1-3cm blebs cp. 24.2 chlorite & calcite str @ 80°, 1cm. 22.6 1cm qtz carb str @ 80°.</p>	<p>PY, CP.</p>	<p>399 400 ?</p>	<p>4001 2.0 1.0 1.0 220 .80 402 1.0 2.0 1.0 120 .46 403 2.0 3.0 1.0 .116 .55 404 3.0 4.0 1.0 152 1.12 405 4.0 5.0 1.0 328 2.00 .336 1.70 406 5.0 5.6 0.6 .110 .62 407 5.6 6.5 0.9 .132 .96 408 6.5 7.5 1.0 .096 .72 409 7.5 8.0 0.5 .044 .32 410 8.0 9.0 1.0 .058 .41 .062 .40 411 9.0 10.0 1.0 .040 .52 412 10.0 11.0 1.0 .048 .44 413 11.0 12.0 1.0 .020 .17 414 12.0 12.54 0.54 .030 .43 415 13.64 14.0 0.56 .020 .35 .034 .36 416 14.0 15.0 1.0 .070 .38 417 15.0 16.0 1.0 .022 .26 418 16.0 17.0 1.0 .040 .37 419 17.0 17.5 0.5 .058 .50 420 17.5 18.5 1.0 .064 .45 .060 .45 421 18.5 19.5 1.0 .030 .25 422 19.5 20.5 1.0 .024 .36 423 20.5 21.5 1.0 .052 .37 424 21.5 22.2 0.7 .036 .30 425 22.2 22.8 0.6 .034 .88 .038 .98 426 24.15 25.0 0.85 .050 .43 427 25.0 26.0 1.0 .036 .30 428 26.0 27.0 1.0 .044 .39 429 27.0 28.0 1.0 .092 .40 430 28.0 29.0 1.0 .102 .49 .108 .47 431 29.0 30.0 1.0 .138 .75 432 30.0 31.0 1.0 .084 .49 433 31.0 32.0 1.0 .094 .43 434 32.0 33.0 1.0 .114 .86 435 33.0 34.0 1.0 .104 .55 .112 .51</p>	<p>0.106, 0.50 / 6.0</p>				
27.8	43.2	<p>PYRITE CHALCOPYRITE MAGNETITE MINERALISED HERCULITE BRECCIA</p> <p>d Kaven - m grey - black; MAR; irreg fragmental & sulphide net texture and MAR - subrounded fragments 1/2-15cm grey brown felds porph & grey brown volc in pn cp mag rich matrix; sparse 1-3mm fgr qtz str @ 30° core broken 10-100cm; Min pn 10-15% v irreg 1-3cm blebs in between fragments; cp 1-10mm grains pried on pyrite margins; mag 2-5% surrounding pyrite & cp xtals; po 1-3% adjacent to pn; occul 1-3cm bleb epidote around sulphides</p> <p>29.0-29.7 cp 10% irreg blebs & network. 15% pn, 5% po. 30.95 3mm bleb cp. 31.6-32.1 6% cp 15% pn, 3% po. 32.5 3mm bleb cp.</p>								

NORTH AIR MINES LTD. DRILL HOLE RECORD

INCLINATION		BEARING		PROPERTY:		LENGTH:		HOLE No. 87-121	
COLLAR				LOCATION:		HOR. COMP: VERT. COMP:		Sheet: 2 of 2	
				ELEVATION:		BEARING:		LOGGED BY:	
				COORDINATES:		BEGAN: COMPLETED:		SAMPLED BY:	
						CORE SIZE: RECOVERY:			

INTERVAL (Specify ft. or m) From To	RECOV.	DESCRIPTION	MINERALIZATION	GRAPHIC LOG	SAMPLES				ASSAYS (Specify %, oz/ton or gm/tonne)				
					No.	From	To	Length	Au %	Cu %			
		34.1 5mm bleb cp.			4.8	436	34.0	35.0	1.0	.054	.156		
		34.5-37.9 20% opy, 5% po 3% cp				437	35.0	36.0	1.0	.064	.190		
		37.9-39.2 lamprophyre dyke. Oct 55° H ct 45°				438	36.0	37.0	1.0	.086	.166		
		39.2-42.8 10-15% py blebs 1/4-6cm, 2% cp.				439	37.0	37.9	0.9	.100	.70		
49.2	49.07	GREY BROWN FINEGRAINED INTERMEDIATE VOLCANIC m-dk grey brown, m-lt grey mottled; f-mar; mottled & veined text; Far biotite 30%, qtz 20% felds 50%; 1-3mm blebs of iron veinlets py 5% throughout; irreg lt grey-white 1/10-2mm qtz calcite & gypsum veinlets throughout; up to 3mm lt grey green "bleaching" adjacent to veins; Min sparse cp < 1/2%.				440	39.2	40.0	0.8	.076	.96	.134	.89
		47.3 2-3mm veinlet py flm 3mm bleb cp.				441	40.0	41.0	1.0	.194	.76		
		49.0 chloritic slick & qtz veining @ 50°.				442	41.0	42.0	1.0	.086	.112		
		EOH 49.07				443	42.0	43.0	1.0	.026	.60		
						444	43.0	44.0	1.0	.016	.24		
						445	44.0	45.0	1.0	.020	.34	.024	.33
						446	45.0	46.0	1.0	.016	.31		
						447	46.0	47.0	1.0	.014	.31		
						448	47.0	48.0	1.0	.020	.35		
						449	48.0	49.07	1.07	.018	.28		

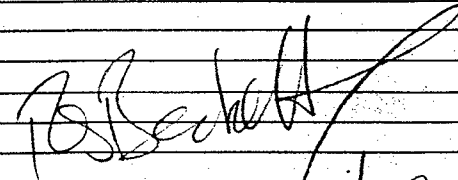
RS
Jan 15/87



NORTHAIR MINES LTD. DRILL HOLE RECORD

INCLINATION		BEARING		PROPERTY: WILLA		LENGTH:		HOLE No. 87-124	
COLLAR	-43°		90°	LOCATION:		HOR. COMP: VERT. COMP:		Sheet: 2 of 2	
				ELEVATION:		BEARING:		LOGGED BY:	
				COORDINATES:		BEGAN: COMPLETED:		SAMPLED BY:	
						CORE SIZE: RECOVERY:			

INTERVAL (Specify ft. or m) From To	RECOV.	DESCRIPTION	MINERALIZATION	GRAPHIC LOG	SAMPLES				ASSAYS (Specify %, oz/ton or gm/tonne)				
					No.	From	To	Length	Au %	Cu %			
76.6	26.82	<p>GREY PYRITE MIN^o HETEROLITHIC FRAGMENTAL</p> <p>lt-med grey-greenish grey; mar; massive-coarse irreg fragmental frags rounded-subangular 1/2-5cm; siliceous felsic; occid felds porph frag m. for pyrite siliceous matrix 3-5% 1/10-2mm diss py; sparse 1h-1cm blebs anhydrite; 1/10-2mm diss cp, occid 1-3mm bleb, cp 3-5% sulphides predominantly in matrix & adjacent 1mm to fractures irreg 1/2-1mm gypsum coated strags; irreg fract coated 1/2mm magnetite; core broken 20-40 to 40-60° gypsum coated</p> <p>16.5-19.1 irreg blebs 1/2-2cm & diss cp 17% meq blebs 1/2-1cm 3% py, irreg veinlets & selvages to sulphides - magnetite & irreg fractures coated magnetite & chlorite</p> <p>17.2-17.3 1-3cm blebs cp & py</p> <p>17.8-18.1 coarse 2-5cm blebs cp 30%, py 10% in veinlets possibly at 0°</p> <p>19.2 1cm white calcite strag @ 35°</p> <p>19.7 irreg network of py, cp, mag blebs & veinlets over 3cm.</p> <p>21.5-21.9 irreg network 1-5mm veinlets py, cp</p> <p>22.9 1/2cm bleb & chlorite slip @ 60°</p> <p>23.8 meq 1-3mm blebs cp & py</p> <p>25.4 1mm gypsum veinlets @ 20°</p> <p>26.1-26.6 irreg network veinlets 1-5mm py & cp. epidote</p> <p>26.82 EOH</p>	<p>py 3-5%</p> <p>cp 3-5%</p> <p>mag 1%</p>										
					6949	16.2	17.0	0.8	.620	1.60	✓		
					490	17.0	18.5	1.5	3.270	3.10	✓	2.666	3.10
					491	18.5	19.5	1.0	.458	1.04	✓	0.397/25.0	
					492	19.5	20.5	1.0	.220	.51	✓		
				00	325	20.5	21.0	0.5	.094	.29			
					396	21.0	22.0	1.0	1.018	.86			
					377	22.0	23.0	1.0	.714	1.02		8.764	
					378	23.0	24.0	1.0	.268	.51			
					379	24.0	25.0	1.0	.108	.37			
					380	25.0	26.0	1.0	.058	.25			
					381	26.0	26.82	0.82	.080	.37		5.304	


 Jan 26/87
 relog

NORTHAIR MINES LTD. DRILL HOLE RECORD

INCLINATION		BEARING		PROPERTY:		LENGTH: 82.0		HOLE No. 87-125	
COLLAR				LOCATION:		HOR. COMP:		VERT. COMP:	
				ELEVATION:		BEARING:		LOGGED BY:	
				COORDINATES:		BEGAN:		COMPLETED:	
						CORE SIZE:		RECOVERY:	
								SAMPLED BY:	

INTERVAL (Specify ft. of m) From To	RECOV.	DESCRIPTION	MINERALIZATION	GRAPHIC LOG	SAMPLES				ASSAYS (Specify %, oz/ton or gm/tonne)									
					No.	From	To	Length	Au %	Cu %								
31.4	79.5	GREY BROWN INTERMEDIATE VOLCANICS																
		m-dk grey brown - dk green; f-mag; massive - lime veined text; irreg 2-5mm grey qtz veinlets throughout; irreg patches 1/2-3cm lt green "bleaching" & foliation; coarse grained blebs 1/2-2mm & irreg veinlets pg throughout; 1/2-2mm fgr mag schorger to some dk py grains; core broken pcd 10-35 cms @ 40-60°; 50% fract coated gypsum & black chlorite; occul 1/2-1cm clots epidote & anhyd																
		34.1 10cm blebs pg 1/2-1cm minor cp & mag.			4827	35.0	36.0	1.0	.012	.10								
		34.5 5cm blebs & 2mm veinlet pg, cp at 35°;			278	36.0	37.0	1.0	.030	.67								
		36.65-37 coarse irreg veinlets pg, cp, mag.			279	37.0	38.0	1.0	.064	.48								
		37.15 blebs pg, cp.			280	38.0	39.0	1.0	.012	.13		.022	.13					
		38.6-41.0 med inter-fragment blebs pg, sparse cp.			281	39.0	40.0	1.0	.136	.94								
		41.95-42.3 15% irreg blebs pg.			282	40.0	41.0	1.0	.162	1.33								
		42.0-43.3 b.c. 1-3cm gypsum coated fracture at 0°.			283	41.0	42.0	1.0	.110	.64								
		43.4-43.6 irreg 1/2-1cm strg pg, min cp @ 0°.			284	42.0	43.5	1.5	.078	1.02								
		43.9-44.5 irreg strgs pg, mag.																
		41.8-42.0 irreg vein white - green qtz.																
		48.4-48.9 2mm white gypsum & chlor-strg @ 0°																
		46.5 46.9 2cm gv. @ 5°																
		45.5-46.9 lt brown "bleaching" & q.v.s.																
		50.9-51.5 pyrite & gypsum & qtz vein breccia @ ~5°																
		51.8-52.6 chlorite, gypsum strgs @ 0°. Min sparse cp.																
		54.8-63. 1/2-1cm blebs & diss pg 3% sparse cp.																
		56.8 2-3mm blebs cp - mag selwage.			72.5	56.0	57.0	1.0	.126	.41								
		57.8 10cm 3mm blebs cp 2% ep.			229	57.0	58.0	1.0	.134	.86								
		58.4-69 occul blebs 1/2-1cm sparse 1-3mm blebs cp; mag selwage 1/2-2mm			230	58.0	59.0	1.0	.120	.80		.140	.78					
		67.1 wky foliated - mafic xtals & biotite @ 40° & crude alignment of 1-3mm qtz strgs.			231	59.0	60.0	1.0	.150	.94								
		67.5-67.9 blebs pg & sparse cp.			232	60.0	61.0	1.0	.154	.17								
		72.8 3cm qtz healed gouge & chlorite @ 35°			233	61.0	62.0	1.0	.076	.46								
		75.7 3cm anhyd bleb, Min pg, cp.			234	62.0	63.0	1.0	.092	.46								
		77.3 3cm blebs pg, mag, cp over 10cm			235	63.0	64.0	1.0	.072	.30		.060	.30					
		78.7-78.8 3mm blebs cp - sparse.			236	64.0	65.0	1.0	.178	.47								
		79.7-79.5 1-3cm blebs coarse of pyrite 15%			237	65.0	66.0	1.0	.310	.60								
79.5	82.0	PURITIC HETEROLITIC BRECCIA			238	66.0	67.0	1.0	.146	.62								
		lt green - green brown; fgr; hard, v irreg subrounded - ang felds, porph frags; Pyritic 10-15% diss & 1/2-2cm blebs			239	67.0	68.0	1.0	.394	.58								
					740	68.0	69.0	1.0	.166	.56		.164	.57		.202			
					241	70.0	71.0	1.0	.051	.30								
					242	71.0	72.0	1.0	.062	.06								
					243	72.0	73.0	1.0	.098	.24								
					244	73.0	74.0	1.0	.056	.50								
					245	74.0	75.0	1.0	.046	.32								
					246	75.0	76.0	1.0	.048	.42								

EOH 82.0
B. Beckwith
121

NORTHAIR MINES LTD. DRILL HOLE RECORD

INCLINATION		BEARING	PROPERTY: h	LENGTH:	HOLE No. 87-127	
COLLAR			LOCATION:	HOR. COMP:	Sheet: 2 of 2	
			ELEVATION:	BEARING:	LOGGED BY: RJ BECKETT	
			COORDINATES:	BEGAN:	COMPLETED:	
				CORE SIZE:	RECOVERY:	
					SAMPLED BY: E. PIGOTT.	

INTERVAL (Specify ft. or m) From To	RECOV.	DESCRIPTION	MINERALIZATION	GRAPHIC LOG	SAMPLES				ASSAYS (Specify %, oz/ton or gm/tonne)							
					No.	From	To	Length	As %	Cu %	Ag %	Au %				
		36.5 3-5cm diss & blebs py, 1/2-3mm diss cp.			48	34.9	36.25	37.0	0.75	.120	1.50					
		36.8 diss cp over 3-10 cm.			48	35.0	37.0	38.0	1.0	.050	.42					
		37.0-39.0 10-15% py irreg 1-2cm blebs & diss			00	201	38.0	39.0	1.0	.078	.70					
		37.0 V. irreg blebs cp adjacent to pyrite.				202	39.0	40.0	1.0	.048	.38					
		37.5 1-3mm blebs cp at pyrite bleb margin.				203	40.0	41.0	1.0	.102	.74					
		42.5-45.8 10-15% py, coarse blebs 1-3cm & diss patches.				204	41.0	42.0	1.0	.042	.25					
		43.75 20cm 3-10cm blebs cgr py, 1/2-3cm blebs cp, irreg 1-3cm cgr gte.				205	42.0	43.0	1.0	.088	.43	.120	.44			
		46.1-49 irreg 1-2mm white calcite veinlets @ 0-5°.				206	43.0	44.0	1.0	.164	.82					
		49.2 1x6cm cp bleb in fract @ 0°.				207	44.0	45.0	1.0	.084	.56					
		49.3-50.45 Lamprophyre dyke, vct 5cm carb veinlet @ 50°, Lt @ ~50°.				208	45.0	46.0	1.0	.144	.62					
		51.2 2mm cp veinlet @ 30° & black mineral - not mag.				209	46.0	47.0	1.0	.034	.24					
		51.6-51.8 b.c.				210	47.0	48.0	1.0	.026	.17	.020	.16			
51.2	64.92	PYRITIC GREY FELDSPAR PORPHYRY dk-m grey, brownish grey; fgr; blotchy massive; 50% porphyritic 20-30% 1/2-2mm felds xbls; occul 3-5cm frag felds morph in fgr grey matrix; 3-7% py 3mm-3cm blebs & patches diss; irreg dk green chlorite 1/10-1mm adjacent to pyrite; 55.2-55.9 m brown finely diss H brown biotite. 56.9 1cm py veinlet 1-3mm cp, mag @ 40-0°. 57.7 1/2-2cm coarse py over 30cm @ ~0°. Min 1-3mm blebs cp, mag. 59.1 2mm white calcite veinlet @ 40°. 59.9 15cm irreg 1/2-2cm blebs py, 1-3mm blebs cp. 62.4 1/2-1cm veinlet py @ ~15° 2-5mm cp. 59-60 Fracts @ 30° spaced 5-15cm. 63.5-63.8 white gte vein @ 0-10°.				00	211	48.0	49.0	1.0	.066	.71				
						212	49.0	49.43	0.43	.082	.64					
						213	50.47	51.0	0.53	.192	.72					
						214	51.0	52.0	1.0	.102	.42					
						00	215	52.0	53.0	1.0	.068	.37	.062	.39		
						216	53.0	54.0	1.0	.060	.28					
						217	54.0	55.0	1.0	.038	.29					
						218	55.0	56.0	1.0	.012	.19					
						219	56.0	57.0	1.0	.016	.25					
						220	57.0	58.0	1.0	.016	.38	.018	.38			
						221	58.0	59.0	1.0	.036	.34					
						222	59.0	60.0	1.0	.036	.34					
						223	60.0	61.0	1.0	.044	.19					
						224	61.0	61.7	0.7	.004	.12					
						00	295	61.55	62.0	0.45	.020	.16				
						296	62.0	63.0	1.0	.028	.22					
						297	63.0	64.0	1.0	.028	.11					
						298	64.0	64.92	0.92	.010	.07					

EOH 64.92

RJ Beckett
Jan 22/87.

NORSHAIR MINES LTD. DRILL HOLE RECORD

INCLINATION		BEARING		PROPERTY: WILLA		LENGTH: 57.6		HOLE No. 87-128	
COLLAR	76°35'	265°19'	LOCATION: 950 2 2 2		HOR. COMP:		VERT. COMP:		Sheet: 1 of
				ELEVATION: 1025		BEARING: 225°11'		LOGGED BY: R.S. BECKETT	
				COORDINATES:		BEGAN: 10/27/57		COMPLETED: 10/28/57	
				SECTION: 990000		CORE SIZE: 30		RECOVERY: 100%	
								SAMPLED BY: E. PIROTT	

INTERVAL (Specify ft. or m) From To	RECOV.	DESCRIPTION	MINERALIZATION	GRAPHIC LOG	SAMPLES				ASSAYS (Specify %, oz/ton or gm/tonne)		
					No.	From	To	Length	% Cu	% Fe	
0	29	DARK GREEN FELDSPAR PORPHYRY HETEROLITHIC BRECCIA If - dk green; v. gr - fgr. mod - v. hard; v. irreg text; irreg porphyritic sections 10-50cm; occul indistinct frags felds (20% ph) & grey - buff v. hard silicified volc?; 5-10% irreg blebs py throughout; Mn - coarse blebs & 1-3mm irreg veinlets cp. 1-3% throughout; core broken 3-30cm @ ~30-60° fract black chlorite coated; lower of gradational & indistinct. 0.3-0.5 20% py, irreg blebs 1-3mm cp, 0.8 chlorite fract @ 15°; 2.5-2.8 calcite fractures @ 50°; 1/2 cm healed py fract. 3.0-4.1 15-20% py coarse 1-3cm blebs, blebs 2-5mm cp.; 4.4- 10cm 1-2cm py blebs. 4.9 10cm chlor fract @ ~15° 6.1- 15% cp blebs occ 20cm. 6.6 2mm blebs py. 8.4 3mm pp in pyritic fracture @ 20° 8.5 3mm bleb cp in 2cm py bleb. 8.7 1-2cm white-green qtz & py @ 80° 9.0- 10cm 50% py 5-8mm cp blebs. 9.4 1-3mm cp in pyritic fract @ 0° 12.9 irreg 3-5mm grey qtz veinlets. 13.7 1cm vein py @ 85° 13.1 2mm mag xtals in pyrite bleb. 13.9 1/2-1cm coarse py & 1-3mm mag in veinlets 14.0 blebs po @ 25° 1-2cm 15.3-16.05 3-10mm blebs py & 3-8mm blebs cp. 17.15 1cm py vein @ 90° 17.4- 8cm py bleb, 5-10mm bleb cp, mag. 17.9-18.9 30% coarse blebs & black chlorite selvage. 21.9-22.3 coarse blebs py in soft greenish black chlorite matrix, sparse cp. 22.8 0.7m b.c. 23.0-23.5 greenish black chlorite coated fracture @ 5° & 1mm cp 2.5mm strg. 23.7 3-5mm bleb cp. 26.3 1cm bleb anh. 1/4 purplish grey 26.6 irreg 3-1cm blebs py veinlet @ 10° 26.9 3mm bleb cp. 27.25 irregular blebs py, cp & po over 3cm. 27.6 1-5mm blebs diss py, cp.									
				00	247	0.0	1.0	1.0	0.80	.52	} 0.548 / 13.0
					248	1.0	2.0	1.0	.024	.35	
					249	2.0	3.0	1.0	.352	.64	
					250	3.0	4.0	1.0	.450	2.00	
					251	4.0	5.0	1.0	.148	1.90	
					252	5.0	6.0	1.0	.088	.64	
					253	6.0	7.0	1.0	.066	.90	
					254	7.0	8.0	1.0	.046	.58	
					255	8.0	9.0	1.0	.034	.90	
					256	9.0	10.0	1.0	.110	1.09	
					257	10.0	11.0	1.0	.005	.19	
					258	11.0	12.0	1.0	.004	.31	
					259	12.0	13.0	1.0	.016	.43	
					260	13.0	14.0	1.0	.030	.49	
					261	14.0	15.0	1.0	.016	.70	
					262	15.0	16.0	1.0	.036	.66	
					263	16.0	17.0	1.0	.118	.64	
					264	17.0	18.0	1.0	.134	1.62	
					265	18.0	19.0	1.0	.088	.91	
					266	19.0	20.0	1.0	.020	.35	
					267	20.0	21.0	1.0	.028	.76	
					268	21.0	22.0	1.0	.032	.45	
					269	22.0	23.0	1.0	.036	.50	
					270	23.0	24.0	1.0	.066	.57	
					271	24.0	25.0	1.0	.062	.34	
					272	25.0	26.0	1.0	.044	.25	
					273	26.0	27.0	1.0	.028	.41	
					274	27.0	28.0	1.0	.010	.30	
					275	28.0	29.0	1.0	.005	.22	
					276	29.0	30.0	1.0	.012	.34	

NORTH AIR MINES LTD. DRILL HOLE RECORD

INCLINATION		BEARING		PROPERTY:		LENGTH:		HOLE No. 87-128	
COLLAR				LOCATION:		HOR. COMP:		Sheet: 2 of 2	
				ELEVATION:		BEARING:		LOGGED BY:	
				COORDINATES:		BEGAN:		COMPLETED:	
						CORE SIZE:		RECOVERY:	
								SAMPLED BY:	

INTERVAL (Specify ft. or m) From To	RECOV.	DESCRIPTION	MINERALIZATION	GRAPHIC LOG	SAMPLES				ASSAYS (Specify %, oz/ton or gm/tonne)	
					No.	From	To	Length	Au %	Cu %
29	39	<p>GREY FINE GRAINED QUARTZ FELDSPAR PORPHYRY H-mgrey; f-vfgr; massive; indistinct qtz & felds grains 1/10-1mm occnly qtz grains up to 3mm subrounded; 1-2% py 3-5mm blebs & diss; core broken 2-30cm irreg fract's at 60-80°, etc gradational and indistinct over 1-2m. 31.2-31.9 b.c. @ low fractures @ 5° ~ 33.0 1" purple-grey amib and veinlet @ 75°, minor py cp 33.3 1cm irreg veinlet amib @ 0° 35.3 2-5mm veinlets epidote @ 30°. sparse carb.</p>	anh anh		277	32.9	33.0	0.15	0.66	37
39	54.1	<p>PYRITE, CHALCO PYRITE MINERALISED FELDSPAR PORPHYRY FRAGMENTAL m-H-dk grey; vfgr-fgr; v irreg indistinct fragmental text. sparse distinct frags 3-10cm; ross frags up 1m; v thin diss & blebs py up to 3cm. 3-7% throughout; Min fer diss cp & blebs up to 2-3cm; core broken 10-30cm @ 50-70° clean fractures; 41.7-42.3 H blue grey qtz veins in healed brecc 30° 43.1 1cm veinlet cp at 35° 43.15 3mm irreg cp veinlet @ 40° 43.3 14cm irreg blebs py and cp 15% 43.7 14cm diss py & cp 10%. wk layered @ 40° 45.95-47.1 finely diss & blebs to 1/2 cm py 15% and cp 10%; irreg veinlets cp 3mm @ 0° ~ sharp cut with feldspar porph ross large fragment. 47.6-48.2 v irreg blebs py 15%, 1-3mm blebs & diss cp 7% 50.4 5mm grey qtz str @ 20° 50.1-51 v finely diss py & cp in grey siliceous matrix 51.5-52.2 b.c. f 51.5 indistinct 1cm vein @ 75° Min H brown pr min ross spl & M grey metallic? tetrahedrite? 52.3-52.6 diss cp in irreg veinlet at ~ 5° 52.9 5mm bleb cp. 53.6-54.05 40% coarse blebs & diss py; irregular blebs 3-10mm & diss cp 10%</p>	py cp cp		278	32.9	33.0	0.15	0.66	37
54.1	57.6	<p>GREY FINE GRAINED QUARTZ FELDSPAR PORPHYRY As above</p>			279	52.0	52.1	0.15	0.66	37
<p>EOT 57.6 D. S. Barrett JAN 22/87.</p>										

NORTHAIR MINES LTD. DRILL HOLE RECORD

INCLINATION		BEARING		PROPERTY: WILLA	LENGTH: 28.04		HOLE No. 87-130
COLLAR	+52° 57' 52"		84° 51' 27"	LOCATION: 9505	HOR. COMP:	VERT. COMP:	Sheet: 1 of 2
				ELEVATION: 102.5m	BEARING: 84° 51' 27"		LOGGED BY: R.J. BECKETT
				COORDINATES:	BEGAN: Jan 20	COMPLETED: Jan 27	SAMPLED BY: E. PIGOTT.
				SECTION: 9505	CORE SIZE: 20		RECOVERY: 100%

INTERVAL (Specify ft. or m) From To	RECOV.	DESCRIPTION	MINERALIZATION	GRAPHIC LOG	SAMPLES				ASSAYS (Specify %, oz/ton or gm/tonne)	
					No.	From	To	Length		
0	19.95	Pyrite, Chalcopyrite, MINERALISE FELDSPAR QUARTZ PORPHYRY H-m grey fgr-mgt massive-coarsely crackle brecciated sulphide matrix: fragments 20-50cm; 1-3mm subangular -subhedral feldspar phenocrysts white-vlt grey prominent throughout 20-40%; 2-3mm H grey subrounded Qtz grains 10-20%; in f-vfgr felsic v hard matrix; Min coarse blebs irregular interfragment sulphides, sparse diss; 7-15% py; 2-5% cp; 1-3% po; core broken 10- 40cm; occul 1/2-1mm irregular grey Qtz v @ 15-40°; occul blebs & veinlets 1/2-1cm anhydrite.	py 7-15% cp 2-5 po 1-3							
		2.0-2.6 blebs coarse pyrite 20%.								
		2.3 2cm bleb cp adjacent to cp.								
		3.1 10cm cgr py								
		3.5-3.9 20% py 5% cp blebs & veinlet at 60°								
		4.4-4.6 30% py, 3cm bleb cp & 3mm veinlet @ 30°								
		5.35 3cm bleb cp								
		5.9 10cm coarse blebs py								
		6.4 1cm irreg veinlet cp								
		6.8 1cm bleb cp								
		7.4 10cm x 2cm bleb cp								
		7.8 3cm diss cp & 1cm irreg veinlet anhydrite.								
		8.8 diss py 10%, 1-3mm blebs cp.								
		9.5 2cm bleb diss py & anh								
		10.4-10.7 diss py & cp 1-3% f gypsum veinlets								
		10.1-10.9 1-2mm white gypsum veinlets @ 15-30°								
		11.6-13.9 coarse blebs py & cp.								
		11.9 3-5mm bleb cp @ 75								
		12.1 5mm bleb cp.								
		12.55 2cm bleb cp								
		12.7-12.9 20% coarse blebs cp.								
		13.3 2-3mm blebs diss cp.								
		13.6-13.9 coarse irreg veinlets py 20% cp 15%								
		14.3- 10cm diss py & cp.								
		14.7 10cm coarse gr py 30% cp 20%								
		15.1 8cm cgr py								
		15.4 2-3cm irreg veinlet py & cp.								
		15.9 2mm veinlet py & cp @ 50°								
		16.45-16.8 15% cgr py, 10% cp cgr blebs.								
		16.8-17.2 irreg fract @ 25°								
		17.1-17.3 1/2-2cm blebs cgr py; 1-3mm blebs cp.								
		17.6-17.7 diss & blebs py, cp 2-10mm, minor po.								

No.	From	To	Length	ASSAYS (Specify %, oz/ton or gm/tonne)	
324	0.0	1.0	1.0	112	.81
325	1.0	2.0	1.0	364	.51
326	2.0	3.0	1.0	332	1.08
327	3.0	4.0	1.0	272	.70
328	4.0	5.0	1.0	302	.76
329	5.0	6.0	1.0	152	.98
330	6.0	7.0	1.0	726	.97
331	7.0	8.0	1.0	668	1.45
332	8.0	9.0	1.0	134	.50
333	9.0	10.0	1.0	146	.45
334	10.0	11.0	1.0	478	.92
335	11.0	12.0	1.0	248	1.53
336	12.0	13.0	1.0	372	2.45
337	13.0	14.0	1.0	166	3.32
338	14.0	14.85	0.85	156	2.75
339	14.85	16.0	1.15	088	1.03
340	16.0	17.0	1.0	076	1.94
341	17.0	18.0	1.0	548	.70
342	18.0	19.0	1.0	104	.91
343	19.0	20.0	1.0	056	.20

0.286/19.0

NORTH AIR MINES LTD. DRILL HOLE RECORD

INCLINATION		BEARING		PROPERTY:		LENGTH: 28		HOLE No. 87-130	
COLLAR				LOCATION:		HOR. COMP:		VERT. COMP:	
				ELEVATION:		BEARING:		LOGGED BY:	
				COORDINATES:		BEGAN:		COMPLETED:	
						CORE SIZE:		RECOVERY:	
								SAMPLED BY:	

INTERVAL (Specify ft. or m) From To	RECOV.	DESCRIPTION	MINERALIZATION	GRAPHIC LOG	SAMPLES				ASSAYS (Specify %, oz/ton or gm/tonne)	
					No.	From	To	Length	cu	oz
19.95	28.04	<p><u>PURITIC COARSE METEOROLITHIC FRAGMENTAL</u></p> <p>lt-m-dk grey-dk brownish grey; f-mar; med-coarse gr angular-subangular breccia; frags 2-50cm; lt brown grey vfg siliceous volcsed; quartz felds par porphyry & brown fgr massive volc frags; Min inner blebs 2-3cm py & meg 2-5mm blebs cp adjacent to py; 5% py, 2% cp core broken 20-50cm @ ~30-80°, some chlorite coated.</p> <p>20.75 2cm bleb diss py, cp 21.0 chlorite slips, py & cp over 2cm @ 50° 21.4 15cm meg venlets pyrrhotite & py 20% 22.0-22.8 meg blebs py, cp & po 1/2-2cm; 5% cp 23.15 10cm diss py, cp 2-5mm, 3% cp. 27.1 epidote coated fracture @ 80</p> <p>EOH. 28.04</p> <p><i>[Signature]</i></p> <p>Jan 23/87</p>	<p>py 5%</p> <p>cp 2%</p> <p>po</p>	00	344	20.0	21.0	1.0	.090	.74
					345	21.0	22.0	1.0	.090	.55
					346	22.0	23.0	1.0	.058	.98
					347	23.0	24.0	1.0	.040	.38
					348	24.0	25.0	1.0	.042	.72
					349	25.0	26.0	1.0	.026	.27
					350	26.0	27.0	1.0	.008	.16

NORTH AIR MINES LTD. DRILL HOLE RECORD

COLLAR	INCLINATION	BEARING	PROPERTY:	LENGTH:	HOLE No. 87-131
			LOCATION:	HOR. COMP:	Sheet: 2 of 3
			ELEVATION:	VERT. COMP.:	LOGGED BY:
			COORDINATES:	BEARING:	SAMPLED BY:
				BEGAN:	COMPLETED:
				CORE SIZE:	RECOVERY:

INTERVAL (Specify ft. or m) From To	RECOV.	DESCRIPTION	MINERALIZATION	GRAPHIC LOG	SAMPLES				ASSAYS (Specify %, oz/ton or gm/tonne)				
					No.	From	To	Length	%		oz/ton or gm/tonne		
19.6	34.3	<p>PYRITE CHALCOPYRITE MINERALIZED VOLCANIC BRECCIA m-clk greenish grey + occul m buff - dk green; f-mar; indistinct subangular fragments 2-40 cm; qtz felds porph; fgr grey green volc + silicified f v fgr buff siliceous volc; in pyritic, pyrrhotite, chalcopyrite mineralised grey green siliceous & chloritic matrix; occul fractures with 1/2-lin mag grains in py blebs; core broken 10-30 cm irreg</p> <p>20.15 10cm coarse pyrrhotite, pyrite, 3mm blebs cp 20.6 7cm coarse po, py, 5mm blebs cp 20.8 8cm bleb po, coarse py 20.9 2cm blebs po over 10cm 21.1 4cm bleb coarse 1-2cm po & cp 21.7 42cm irreg cgr blebs po 15%, py 10%, cp 10% 24.4 2cm bleb py 3-5mm bleb cp 24.8 8cm bleb purplish grey anh 26.7-27.1 irregular blebs 3-10mm py 20%, 1-3mm cp grains 3% 27.4 2mm bleb cp 28.3-28.5 irreg blebs py, magnetite; 3-5mm blebs cp 29.3-29.5 15cm coarse py, po, 3-5mm blebs cp 27.8 1/2 cm veinlet anh @ 70° 29.6-30.1 irreg blebs py, po, 3-5mm cp 31.39 15cm matrix py, magnetite + 2-5cm frags 32.0-34.3 irreg 3-10mm amastomosing blebs py, 15% po 10; sparse cp 1%</p>	<p>py cp ~ 2%</p> <p>anh</p>	00	394	19.2	20.0	0.80	126	?	?	11%	
						395	20.0	21.0	1.0	740			
						396	21.0	22.0	1.0	620			
						397	22.0	23.0	1.0	406			
						398	23.0	24.0	1.0	072			
						399	24.0	25.0	1.0	306			
						400	25.0	26.0	1.0	110			
						401	26.0	27.0	1.0	Tr			
						402	27.0	28.0	1.0	042			
						403	28.0	29.0	1.0	026			
						404	29.0	30.0	1.0	048			
						405	30.0	31.0	1.0	030			
						406	31.0	32.0	1.0	012			
						407	32.0	33.0	1.0	040			
						408	33.0	34.0	1.0	036			
						409	34.0	34.3	0.3	032			
34.3	46.1	<p>PYRITE, MAGNETITE MINERALIZED SILICIFIED INTERMEDIATE VOLCANIC dk green green, fgr, massive, hard, silicified andesite? coarse 1-3cm pyrite core broken 20-60cm 35.3-35.9 irreg 3-5mm blebs py, 2-3mm mag 5% py 36.9-37.9 irreg blebs py 7%, mag 3% 37.5 1-3mm grains cp 39.1 5cm bleb py, minor magnetite 39.4 10cm bleb py 39.9 3cm patch diss cp 39.3 5cm coarse 1-3cm blebs pyrite, 3-5mm bleb cp</p>		00	410	36.8	37.8	1.0	054				
						411	38.7	39.7	0.77	122			

NORTHAIR MINES LTD. DRILL HOLE RECORD

INCLINATION		BEARING
COLLAR		

PROPERTY:
LOCATION:
ELEVATION:
COORDINATES:

LENGTH:	
HOR. COMP:	VERT. COMP:
BEARING:	
BEGAN:	COMPLETED:
CORE SIZE:	RECOVERY:

HOLE No. 87-133
Sheet: 3 of 3
LOGGED BY:
SAMPLED BY:

INTERVAL (Specify ft. or m.) From To	RECOV.	DESCRIPTION	MINERALIZATION	GRAPHIC LOG	SAMPLES				ASSAYS (Specify %, oz/ton or gm/tonne)
					No.	From	To	Length	
44.8		Min sparse blebs py, occn host coated 1-3mm py & cp. J&I cts sharp FELDSPAR PORPHYRITIC GRANODIORITE (QLP) matrix (black-white speckled): mar; massive porphyritic 45% white - 1/2 grey 1/2-2mm feld xtals 10% indistinct 1/2-2mm subrounded Qtz grains & 10% black biotite in Qtz fields Kfs + matrix; granodiorite; sparse 1-2 mm grey Qtz veinlets throughout at 40-60°. Min 2% py 1-5 mm blebs; 1-3 cm black mafic frags throughout EOH 53.95 R. J. Scott Jan 24/87							

NORTH AIR MINES LTD. DRILL HOLE RECORD

INCLINATION		BEARING		PROPERTY:		LENGTH:		HOLE No. 87-134	
COLLAR				LOCATION:		HOR. COMP:		VERT. COMP:	
				ELEVATION:		BEARING:		LOGGED BY:	
				COORDINATES:		BEGAN:		COMPLETED:	
						CORE SIZE:		RECOVERY:	
								SAMPLED BY:	

INTERVAL (Specify ft. or m) From To	RECOV.	DESCRIPTION	MINERALIZATION	GRAPHIC LOG	SAMPLES				ASSAYS (Specify %, oz/ton or gm/tonne)										
					No.	From	To	Length	% Cu	% Fe	% Zn	% Pb							
23.8		2cm bleb diss py & cp.																	
24.1		15cm bleaching of 2mm gypsum calcite string @ 45°.			00	565	250	26.0	1.0	.190									
26.5-27.5		lamprophire. 1 ct 80 1/2-1cm lt aren sheared, 1 ct sharp @ 80 7mm talc.				566	260	26.5	0.5	.152									
27.5-28.6		parallel fractures at 75 spaced 2-5cm coated black chlorite.				567	27.5	28.0	0.5	.094									
28.0-29.1		inreg 3-7mm blebs py & 1-3mm cp adjacent to py; sulphides at margins & matrix to f-vfar silicified sed.				568	28.0	29.0	1.0	.308									
29.7		inreg blebs py & cp 2-5mm & diss.				569	29.0	30.0	1.0	.210									
30.7-31.1		lt-dk grey f-vfar silicified sed. bxd'				570	30.0	31.0	1.0	.082									
31.95		5-20mm bleb py @ 20; 1-3mm cp.				571	31.0	32.0	1.0	.080									
32.3		1cm grey qtz vein @ 30°				572	32.0	33.0	1.0	.074									
32.8		1-3mm blebs cp				573	33.0	34.0	1.0	.066									
33.1-33.5		1-3mm diss cp 10% & diss cp 3%				574	34.0	35.0	1.0	.124									
33.9-35.1		inreg blebs py inter fragment 1/2-3cm & 1-3mm blebs cp, 1-3mm mag.				575	35.0	36.0	1.0	.148									
35.5-35.8		inreg lt aren green "bleached" veinlets w/ dk brown - grey matrix - volc				576	36.0	37.0	1.0	.126									
36.3		15cm diss py 10% & 1-3mm blebs cp.				577	37.0	38.0	1.0	.102									
36.4		5mm vein py @ 50°																	
36.8-38.2		buff qtz fields porph - frag or dyke?																	
38.4		8cm 40% py 20% mag																	
38.5		15cm b.c.																	
38.9		1-3mm qtz string @ 25°																	
41.3	47.5	L. ct sharp. DARK BROWN GREY MAFIC VOLCANIC dk brown - grey - black - mag green grey; fgr. massive - w/ky foliated 40-50°; mafic volc; 2-5mm lt grey green veinlets subparallel to fol. 1/2-1cm lt grey qtz veins subparallel to fol @ 50-60°; coarse broken 10-30cm at 40-50° parallel to fol. Frag coated gypsum & chlorite;																	
43.7-44.0		coarse inreg blebs py 30%, pc 30% cp 3%				578	43.7	44.7	1.0	.212									
44.2-		coarse py, 40% mag 15%, cp 3%				579	44.7	45.0	0.3	.016									
44.5		2-10mm bleb cp // fol				580	45.0	46.0	1.0	.022									
46.5-46.6		inreg blebs py 3-5mm, mag 1-3mm cp 1-3mm				581	46.0	47.0	1.0	.036									
47.2-47.4		inreg calcite & gypsum veinlets @ 55° fissile.																	

0.126/13.0

NORTHAIR MINES LTD. DRILL HOLE RECORD

INCLINATION		BEARING		PROPERTY:		LENGTH:		HOLE No. 87-134	
COLLAR				LOCATION:		HOR. COMP: VERT. COMP:		Sheet: 3 of 3	
				ELEVATION:		BEARING:		LOGGED BY:	
				COORDINATES:		BEGAN: COMPLETED:		SAMPLED BY:	
						CORE SIZE: RECOVERY:			

INTERVAL (Specify ft. or m) From To	RECOV.	DESCRIPTION	MINERALIZATION	GRAPHIC LOG	SAMPLES				ASSAYS (Specify %, oz/ton or gm/tonne)		
					No.	From	To	Length			
47.5	59.13	<p>QUARTZ VEIN IN GRANODIORITE INTRUSIVE</p> <p>m-dk grey-black, mar-far, massive; angular black frag. volc. in grey mar granodioritic matrix. irreg grey qtz veins 1/2-1cm; Mn sparse py & cp blebs some broken 15-40cm @ 60-90°; 50% frags clear, 50% 1/2 mm gypsum. V at sharp @ ~60° comp qtz 50 plagi 40 biotite 10% 1% py, 1/2% cp.</p> <p>41.3-51.3 20% irreg grey qtz veins 1-2cm 52.4-52.6 1-5 mm blebs py 15% 1-3 mm blebs cp // fol</p> <p>52.8 1/2-1cm blebs py, dissep. 51.8 5mm py string, 2mm cp 53.9 3-10 mm blebs cp // fol at 40°</p> <p>EOM. 59.13</p> <p>TS Beckett Jan 25/87</p>									
					00	582	52.27	52.96	0.69		.024
						583	53.6	54.0	0.40		.034

NORTHAIR MINES LTD. DRILL HOLE RECORD

INCLINATION		BEARING		PROPERTY:	LENGTH: 59.13	HOLE No. 87-135	
COLLAR				LOCATION:	HOR. COMP:	VERT. COMP:	
				ELEVATION:	BEARING: 272°08'		Sheet: 1 of 3
				COORDINATES:	BEGAN: Jan 24 COMPLETED: Jan 24/87		LOGGED BY: R. BECKETT
					CORE SIZE: B @ RECOVERY: 100%		SAMPLED BY: E. PIOTT

INTERVAL (Specify ft. or m) From To	RECOV.	DESCRIPTION	MINERALIZATION	GRAPHIC LOG	SAMPLES				ASSAYS (Specify %, oz/ton or gm/tonne)			
					No.	From	To	Length	Au %	Cu %		
0	21.0	<p>GREEN-GREY FINE GRAINED QUARTZ FELDSPAR PORPHYRY in greenish grey - grey buff; f-v-fav; massive, v-far opalucous matrix; hard - v-hard - 7; indistinct qtz grains & felds xtals 1-2mm 80% felds 15% qtz in felds for matrix; felds xtals not distinguishable on cut surface; indistinct blotchy 1-3cm to fragmental text; 1-2% diss py 1% diss cp; sparse 1-2 blebs dissepidote; core broken 10-30cm @ 50-70°, 20% coated 1/2-1mm gypsum, 20% chlorite; Hct indistinct & grad over 1-2m.</p> <p>1.1-3.4 lamprophyre dyke vct 80, lct 60x 3.8 1-2mm grs diss py & cp 3% over 8cm @ 30° 6.9 chlorite fracture s.a. 85 spaced 1/2-1cm over 10cm 7.1 10cm b.c. 7.6-7.9 b.c. chloritic fractures @ 30-80°. 9.14-11.0 lamprophyre dyke vct @ 45°, lct @ 55° 10-11 b.c. 11.4-12.1 1/2-2mm white gypsum veinlets @ 35° 13.1-13.5 irreg qtz veins & grey chlorite string irreg gypsum veins; 16.9-17.7 diss 5% epidote 1-3mm, diss py 2% diss cp 1% 15.5 2-5cm blebs py epidote - mag 15.7-16.3 blotchy buff - feldspathised. 18.4 1cm blebs py & cp. 18.7 diss py, cp 3% over 10cm. 19.0 2cm 1-3mm blebs py. 19.9-20.8 irreg blebs py 4% 1-3mm blebs cp 1-2%, patches in brown biotite alt. gypsum coated fractures @ 15-20°.</p>										
21.0	36.5	<p>GREY HETEROLITHIC FRAGMENTAL H green green - brown grey - dk grey; f-ar; v. variable irreg text, section 10-50cm felds porph; sections fragmental 3-5cm v-far med buff v. s.d.; core broken, 20-50cm at 70-90°</p> <p>21.3 5mm veinlet py, cp @ 70, 3mm scl range black chlorite. 27.0 4cm bleb py 27.05-28.0 lamprophyre dyke Hct 35° 1cm chilled margin & 10cm bleached, vct 80°.</p>										
					∞	584	16.6	17.7	1.1	.056		
						585	17.7	19.0	1.3	.044		
						586	19.0	20.0	1.0	.062		
						587	20.0	21.0	1.0	.074		

NORTH AIR MINES LTD. DRILL HOLE RECORD

INCLINATION		BEARING	PROPERTY:	LENGTH:	HOLE No. 87-135	
COLLAR			LOCATION:	HOR. COMP:	VERT. COMP:	Sheet: 2 of 3
			ELEVATION:	BEARING:		LOGGED BY:
			COORDINATES:	BEGAN:	COMPLETED:	SAMPLED BY:
				CORE SIZE:	RECOVERY:	

INTERVAL (Specify ft. or m) From To	RECOV.	DESCRIPTION	MINERALIZATION	GRAPHIC LOG	SAMPLES				ASSAYS (Specify %, oz/ton or gm/tonne)	
					No.	From	To	Length	g Au/g	Cu %
		28.9-29.2 vireg diss py epidote blebs 1-3cm \$ 4 green epidote strg 2cm @ 10°			588	28.5	29.5	1.0	.060	
		29.5-29.7 gypsum veils spaced 1-2cm @ 20-40°			589	31.0	32.0	1.0	.210	
		30.65 3mm py, cp strg @ 30°								
		31.7 20 diss py 2% cp 1%								
		32.2 2mm py veinlet @ 15°								
		32.3 1-2mm gypsum strg @ 0°								
		37.1-37.4 irregular blebs py 2-4cm inter fragment sulphides, to frags 3-4cm 1-3mm blebs cp. 5%								
		35.8-36.7 irreg 1-3mm gypsum strg			590	35.0	36.0	1.0	.068	
		37.4 2mm stringer py & 1-3mm blebs cp.			591	36.0	37.0	1.0	.010	
36.5-43.5		GREY BROWN PERITE-CHALCOPYRITE-MINPHETROLITHIC BX medium brown; fav, massive - sections rough, inter-gr feld path; - possibly large volc fragments in heterolithic bx? Min irreg pods 5-15cm 30-50% py, 5-10% po & 1-10mm blebs cp, sparse mag; core broken 30-70° chlorite coated 20-50cm; 1st sharp	py 3% pb 1% cp 2%		592	37.0	38.0	1.0	.066	
		38.8-39.7 irreg blebs to 5-10mm 15%, cp 3- 15mm 10% & po 5-10mm 10% inter fragment sulphide			593	38.0	39.0	1.0	.028	
		39.95 7mm veinlet py, 1-3mm cp @ 75°			594	39.0	40.0	1.0	.054	
		39.0 chlorite fracture 1-3mm @ ~70°			595	40.0	41.0	1.0	.034	
		40.2 2cm 40% py veinlet @ 30°			596	41.0	42.0	1.0	.046	
		41.9 1cm diss py & gypsum strg @ 35°			597	42.0	43.0	1.0	.038	
		42.4 1cm 30% py strg @ 30°			598	43.0	44.0	1.0	.046	
		42.7 py epidote bleb 3cm			500	44.0	45.0	1.0	.020	
		43.5 2cm veinlet py @ 40°								
43.5-49.8		GREY BROWN FOLIATED QRTZ VEINED MAFIC VOLCANIC dark brown mag; w/kyf-ohated at 40-50°; irregular 1-10mm green granular qtz strgs throughout; 1% diss py; irreg lt grey green 1-3mm "bleached" veinlets								
		43.8 2cm 40% py, 3% cp.								
		44.0- 2.5cm 20% coarse blebs py, 1-3mm blebs cp 5%								
		46.8 3cm diss cp & py & anh bleb 2-3cm								
		48.8 diss py, cp over 8cm								
		49.4 5cm diss fgr py, cp.								

ASSAYS (Specify %, oz/ton or gm/tonne)

g Au/g Cu %

588 28.5 29.5 1.0 .060

589 31.0 32.0 1.0 .210

590 35.0 36.0 1.0 .068

591 36.0 37.0 1.0 .010

592 37.0 38.0 1.0 .066

593 38.0 39.0 1.0 .028

594 39.0 40.0 1.0 .054

595 40.0 41.0 1.0 .034

596 41.0 42.0 1.0 .046

597 42.0 43.0 1.0 .038

598 43.0 44.0 1.0 .046

500 44.0 45.0 1.0 .020

Check

NORTHAIR MINES LTD. DRILL HOLE RECORD

INCLINATION	BEARING	PROPERTY:	LENGTH: 18.66	HOLE No. 87-137
COLLAR # 74° 42' 25"	79° 00' 24"	LOCATION:	HOR. COMP:	VERT. COMP:
		ELEVATION: 6254	BEARING: 79° 00' 24"	SHEET: 1 of 1
		COORDINATES:	BEGAN: Jan 26	COMPLETED: Jan 27/87
		SECTION: 99501	CORE SIZE: BCR	RECOVERY: 100%
			LOGGED BY: RJ BECKETT	
			SAMPLED BY: E. PIGOTT	

INTERVAL (Specify ft. or m) From To	RECOV.	DESCRIPTION	MINERALIZATION	GRAPHIC LOG	SAMPLES				ASSAYS (Specify %, oz/ton or gm/tonne)											
					No.	From	To	Length												
0	1.0	LIGHT GREEN FELDSPAR PORPHYRY H-grey, var. massive; hard, 1/10-1/2 mm felds xtals 10%. 1. ct, 2 ch. 20% dk brown biotite.																		
1.0	14.5	CRACKED GREEN FELDSPAR PORPHYRY FRAGMENTAL H-dk greenish grey, f-mar, massive, maishal fragments Predominantly felds porph w var - v var - hard felsic matrix; sparse 1-3% diss throughout; fragments - 30% matrix supported; core broken 5-30cm frags coated black & 1/2 cm chlorite @ 10-60%; fragments 2-20cm - sub rounded. 4.8 2mm black chlorite & gypsum coated fract @ 25. 5.3-5.6 b.c. in wry chlor & gyp coated fract. @ 20-30°. 6.5-7.3 black chlor coated fract @ 30°; j.b.c. 12.3-12.6 b.c. in wry chlor coated fract @ 30°. 11.5 1cm anh hyd veinlet @ 90°.																		
14.5	28.66	MEDIUM GREEN INEQUIGANED MASSIVE FELDSPAR PORPHYRY H grey - mar green, v var - var; hard 6/12; massive - intensely porphyritic 1/10-1/2 mm white felds xtals 5-15% 1/10 10% dk gr biotite diss throughout; med 1-2cm chots epidote 5%; 3% diss py, ~1% diss ep; sparse blebs anh 1/2-2cm; core broken 3-20cm @ 30-60° fract's coated chlorite & gypsum. 15.7 15cm b.c. chlorite fract 15° 18.4 chlor fract @ 10° & gyp coated @ 60° 20.6 2mm cp g py veinlet @ 5° 21-22.3 chlor & gyp fract's spaced 5-10cm @ 35-60° 22.4-24.5 1/2-1cm blebs H purplish grey anh 5%.																		
		EOH 28.66																		
		RJ Beckett																		
		Jan 31/87																		

0	3192	21.0	22.0	1.0	.058	} 0.112 - 13.0
	3193	22.0	23.0	1.0	.108	
	3194	23.0	24.0	1.0	.124	
	3195	24.0	25.0	1.0	.104	
	3196	25.0	26.0	1.0	.046	
	3197	26.0	27.0	1.0	.068	
	3198	27.0	28.0	1.0	.106	
	3199	28.0	28.66	0.66	.022	

NORTHAIR MINES LTD. DRILL HOLE RECORD

INCLINATION	BEARING	PROPERTY: WILLA	LENGTH: 60.29m	HOLE No. 87-138
COLLAR	-72°	90°	HOR. COMP: VERT. COMP:	Sheet: 1 of
		LOCATION: 9505 DR.	BEARING: 90°	LOGGED BY: R.J. BECKETT
		ELEVATION: 1025m	BEGAN: Jan 27 1987	SAMPLED BY: E. PILOTT
		COORDINATES:	COMPLETED: Jan 27 1987	
		SECTION 9950 N	CORE SIZE: 130 RECOVERY: ~100%	

INTERVAL (Specify ft. or m) From To	RECOV.	DESCRIPTION	MINERALIZATION	GRAPHIC LOG	SAMPLES				ASSAYS (Specify %, oz/ton or gm/tonne)					
					No.	From	To	Length	Au %	Cu %				
0	6.32	<p>QUARTZ FELDSPAR PORPHYRY lt-green, white speckled; mgf; massive, porphyritic, ocnl rounded 1-5cm bx frags; 30% white - lt green felds xtals, ~1/2 of xtals fractured, 15% rounded qtz grains 2-3mm in v. far-aphanitic matrix; 10% dk green chlorite; ocnl 1-3mm grey lined qtz strgs; hard; core broken 10-40cm; 1st faulted.</p> <p>0.75 3-5m blebs diss cp. 1 10cm 10-15mm blebs diss cp. 4.0 3mm blebs 4.0-4.3 1/2 mm fractures @ ~30 coated chlorite & pyrite 4.5 3-5mm blebs cp overl 8cm. 4.8 3-15mm irreg bleb cp & 1-2mm fract coated cp @ ~0° irreg bleb anh 5.3-5.9 5% diss py 6.3 chlorite slips overl 2cm; up to 2mm thick chlorite & gypsum @ 15° 6.3-6.8 b.c.</p>			0	3151	0.8	2.0	1.7	.132				
						3152	2.0	3.0	1.0	.078				
						3153	3.0	4.0	1.0	.110				
						3154	4.0	5.0	1.0	.226				
						3155	5.0	6.0	1.0	.116				
						3156	6.0	7.0	1.0	.082				
6.3	8.1	<p>PHYRITE, CHALCOPHYRITE MIND BIOTIC INTERMEDIATE VOLCANIC dk brown - yellow; mar; massive; 20% lt brown biotite. Min 15% 1/4-1cm 5% cp; 20% irreg 1/2-1cm qtz blebs. subparallel to foliation; mt volc?</p>				3157	7.0	8.0	1.0	.606				
8.1	43.7	<p>PHYRITIC HETEROLITHIC BRECCIA m blue grey - dk blue grey - lt green; mar; massive coarse fragmental; clasts of felds porph 40%, mafic dk greenish grey volc 40%, 20% qtz; frags pred 1-5cm up to 20cm; subrounded - rounded; in fgr 1/2 grey pyritic, epidioric siliceous matrix, blebs lt grey anhydrite 1-3cm throughout; py diss 3%; cp diss 1-5mm blebs 3-5%; core broken 3-30cm @ 50-70° w/ chlorite; 1st grad.</p> <p>8.1 10cm 10% 1-3mm blebs py, 5% cp 1-3mm 8.3 5% diss cp overl 8cm 8.9 1/2-2cm bleb diss 5 py & 2mm bleb cp 9.9 4cm diss py 1/2-2mm round mafic fragment 10.3 3mm anh veinlet & 3-5mm blebs py. 10.5 4cm bleb anh. 12.2 several 1-3cm blebs anhydrite. 13.9-14.2 7% diss cp, 5% py in matrix; 1/2-1cm blebs anh hyd 1% fgr diss po. 15.1 1cm veinlet anh hyd at et with felds porph frag. 1-2cm xtals py. 15.3 irreg 1-3mm blebs py & cp overl 10cm</p>	py diss 3-5% cp diss 2-3%											
						3158	8.0	9.0	1.0	.276				
						3159	9.0	10.0	1.0	.028				
						3160	10.0	11.0	1.0	.044				
						3161	11.0	12.0	1.0	.070				
						3162	12.0	13.0	1.0	.112				
						3163	13.0	14.0	1.0	.152				
						3164	14.0	15.0	1.0	.284				
						3165	15.0	16.0	1.0	.064				

NORTHAIR MINES LTD. DRILL HOLE RECORD

INCLINATION		BEARING	PROPERTY:	LENGTH:	HOLE No. 87-138	
COLLAR			LOCATION:	HOR. COMP:	VERT. COMP:	Sheet: 2 of 2
			ELEVATION:	BEARING:		LOGGED BY:
			COORDINATES:	BEGAN:	COMPLETED:	SAMPLED BY:
				CORE SIZE:	RECOVERY:	

INTERVAL (Specify ft. or m) From To	RECOV.	DESCRIPTION	MINERALIZATION	GRAPHIC LOG	SAMPLES				ASSAYS (Specify %, oz/ton or gm/tonne)	
					No.	From	To	Length	Ag%	Cu%
15.9-16.2		3% diss cp in matrix 1/2-1cm blebs anh.								
16.8		sparse blebs cp 1-3mm ore 4.7cm.			3166	16.0	17.0	1.0		.206
19.9-21.3		1-3mm blebs py & cp 3% cp.			3167	17.0	18.0	1.0		.034
21.4		3-5mm blebs cp			3168	18.0	19.0	1.0		.066
26.5		1-3mm bleb py, 1-3mm bleb cp			3169	19.0	20.0	1.0		.066
26.6		irreg veinlet py 1-3mm & 1-3mm bleb cp.			3170	20.0	21.0	1.0		.162
28.2-28.5		1-3mm blebs py -interclast.			3171	21.0	22.0	1.0		.058
26.6		2mm quartz & 3mm anh veinlet @ 45°			3172	22.0	23.0	1.0		.088
28.0		1-2cm anh blebs ore 20cm.			3173	23.0	24.0	1.0		.116
29.5-29.8		1 green atm - epidote? 1-3mm blebs p & cp 5%; 1-2cm blebs H grey anh hyd.			3174	24.0	25.0	1.0		.104
30.4-31		1-2cm blebs anh.			3175	25.0	26.0	1.0		.166
31.8-33.43		15mm irreg blebs py 10%, 1-3mm blebs cp & 1cm blebs cp 7% 1-2cm anh; sulphides interclast.			3176	26.0	27.0	1.0		.072
33.8-34.6		3-15mm irreg blebs py; 3-10mm blebs cp 7%.			3177	27.0	28.0	1.0		.014
35.4		3mm veinlet diss py @ 40°			3178	28.0	29.0	1.0		.106
34.4-34.6		1-3mm py 5%, 1-3mm cp 7%. blebs anh.			3179	29.0	30.0	1.0		.246
35.8		3mm qtz str & 1-3mm blebs py, cp.			3180	30.0	31.0	1.0		.148
36.7		3cm anh vein @ 40°			3181	31.0	32.0	1.0		.138
37.5		foliated volc frag? Calc @ 35°			3182	32.0	33.0	1.0		.158
38.3		1-3mm blebs py 7%, 1-3mm blebs cp 5%. 1-2cm blebs anh.			3183	33.0	34.0	1.0		.278
40.2		irreg fract with 1-2cm py, chlorite margin 1-2mm ore 20cm			3184	34.0	35.0	1.0		.172
41.8		2mm discout veinlet cp blebs py & cp. 1-3mm & interclast anh.			3185	35.0	36.0	1.0		.046
42.4-		chloritic fract 1-2mm @ ~ 0°			3186	36.0	37.0	1.0		.132
42.6-43.7		H buff v far v hard matrix & indistinct fragments.			3187	37.0	38.0	1.0		.112
43.7-60.29		DARK GREEN & GREY METEOROLITHIC FRAGMENTAL dark greenish-blue area - buff; f-mgr; fragmental, subangular - rounded 1/2-3cm fragments in fgr chloritic matrix; frags buff v far siliceous felsic volc 50% quartz felds porphyry 30%; 20% dark blue grey volc; 1-3% diss py. EOL 60.29 Rebeck Jan 30/87			3188	38.0	39.0	1.0		.296
					3189	39.0	40.0	1.0		.124
					3190	40.0	41.0	1.0		.286
					3191	41.0	42.0	1.0		.102

0.142/22.0

NORTHAIR MINES LTD. DRILL HOLE RECORD

INCLINATION		BEARING	PROPERTY: <u>WILLIAMS</u>	LENGTH: <u>3901m</u>	HOLE No. <u>87-140</u>
COLLAR			LOCATION: <u>9505</u>	HOR. COMP:	VERT. COMP:
			ELEVATION: <u>1025m</u>	BEARING:	
			COORDINATES:	BEGAN:	COMPLETED:
				CORE SIZE: <u>154</u>	RECOVERY: <u>100%</u>

INTERVAL (Specify ft. or m) From To	RECOV.	DESCRIPTION	MINERALIZATION	GRAPHIC LOG	SAMPLES				ASSAYS (Specify %, oz/ton or gm/tonne)	
					No.	From	To	Length	Au %	Cu %
		ohn in grey volc sections ~ 45°								
		15.3 gypsum coated fracture @ 40° //ohn; chlor veinlets over 2cm								
		15.4 pyrite, magnetite blebs								
		17.1 chlor gypsum 2mm coated fract @ 50°								
		18.3 1cm purple-grey anhyd ven @ 35, 1/2cm diss py at margin								
		17.7 chlor gypsum coated fract @ 50°								
		19.4 3mm irreg qtz carb str @ 50° 3cm blebs diss py & mag, to pink carb			0	3200	19.0	20.0	1.0	.016
		19.5-19.8 b.c. chlor shps @ 45 & 3cm lump dyke				3201	20.0	21.0	1.0	.006
		20.5 3mm gyp str @ 0°				3202	21.0	22.0	1.0	.036
		21.2 white - dk maroon carb str @ 25- 40° over 10cm				3203	22.0	23.0	1.0	.064
		21.4 3mm bleb cp.								
		21.6 bc ore 15cm irreg @ 20°								
		21.8 3mm white calc str @ 40° sparse diss cp								
		22.25 5cm bleb coarse py & 3-5mm blebs cp ore 15cm, b.c.; chlor frags @								
		22.8-23.0 coarse 1/4-2cm py, mag & calcite								
		23.0- 5cm white calcite ven & white bx; @ 40°								
		It ct faulted @ 40°								
20.3	24.55	BLACK LAMPROPHIRE DYKE dk brown black; fine; massive; sl calcareous, U ct faulted; It ct 45° 23.8 6cm b.c.								
24.55	34.25	PYRITE CHALCOPRITE MINERAL SPAR PORPHYRY CRACKLE BX H grey - dk greenish grey - yellow; f-mar; massive - irregularly 3-5cm crackle bxd; irreg blebs py & cp .1-5cm throughout; sulphides sun rounded greenish black 1/4-2cm shld & epidote scavage; 10% py, 3-5% cp blebs magnetite 3-10mm associated with sulphides; lot. shnd @ 45°; core broken 5-30cm @ 35-85 fract's chlor & gyp coated; patchy 1-3cm diss epidote. 24.8 5cm 1-15mm coarse cp 30% & py 20% 1/2mm blebs smeared gold at sulphides margins. @ 85° at dyke contact.	py 10% cp 3-5% mag 2%		0	3204	24.6	24.7	0.10	.362
			cp, py, Au Mag			3205	24.7	25.0	0.30	.216

NORTHAIR MINES LTD. DRILL HOLE RECORD

INCLINATION		BEARING	PROPERTY: WILLA	LENGTH: 39.01	HOLE No. 87-140	
COLLAR			LOCATION:	HOR. COMP:	VERT. COMP:	Sheet: 3 of 4
			ELEVATION:	BEARING:		LOGGED BY:
			COORDINATES:	BEGAN:	COMPLETED:	SAMPLED BY:
				CORE SIZE:	RECOVERY:	

INTERVAL (Specify ft. or m) From To	RECOV.	DESCRIPTION	MINERALIZATION	GRAPHIC LOG	SAMPLES				ASSAYS (Specify %, oz/ton or gm/tonne)											
					No.	From	To	Length												
25.1-25.7		diss - coarse massive py; 1-5 mm blebs cp 10% & 1-3mm mag; diss epidote 20%.																		
26.4		8cm bleb purple grey anhyd, tr cp.																		
26.53		3mm bleb cp.																		
26.7		1/2 cm veinlet anhyd & 3mm epidote.																		
26.95		3-5mm blebs cp & 1/8" mm black chlor string.																		
27.05		1-5mm blebs cp																		
27.36		1cm calcite & chlor string @ 85°																		
27.5		ineq veinlet 1/2-2cm cp & chlor string @ 30°																		
27.7		5-10cm bleb cp & 3mm chlor.																		
27.8		3mm gyp veinlet @ 20°																		
28.05		coarse 1-5cm py & 2-5cm cp, 1-3mm mag. over 5cm; 30% py.																		
28.5-28.85		1-3mm diss py 20% & cp 10%.																		
29.5		3-10mm py veinlet @ 0°																		
29.9		1-2cm ineq blebs py & 1-3mm cp & mag.																		
30.1		1-2cm ineq veinlet & 3-10mm blebs py; 1-3mm blebs cp, @ 30° over 20cm.																		
30.4		1-3cm blebs py & 3-10mm blebs cp. over 4cm; @ 50°																		
30.55		1-3mm veinlet cp @ 45°																		
30.60		1-3cm ven cp @ ~50; 1-2m veinlets with chlorite.																		
30.7-31		ineq 1-5mm blebs cp, 3-10mm py.																		
31.3		1-2cm bleb py, 1-3mm bleb cp, diss mag in halo round sulph, over 20cm.																		
31.8		1-3cm ineq veins py, & 2-5mm blebs cp; halo mag & chlor 1-5mm ineq 3-5mm veinlet cp @ 75°.																		
32.17		ineq 3-5mm veinlet cp @ 75°.																		
32.5-32.6		3cm ineq patches diss & cp py, diss cp, mag & 1/4 green alt. epidote.																		
33.1		v ineq blebs py 1/2-3cm, 1-3mm blebs cp, 1-3mm mag, light gr ep alt.																		
33.6		5cm diss py, cp mag epid.																		
33.8		6cm diss py cp, mag, epid.																		
34.25-37.9		DARK GREY INTERMEDIATE VOLCANIC m-dk grey - dk brownish grey; fine, massive. 1/2-1mm qtz carb string throughout @ 30-60°; intermediate volc; Uct sharp																		

No.	From	To	Length	Assay
3206	25.0	26.0	1.0	.242
3207	26.0	27.0	1.0	.178
3208	27.0	28.0	1.0	.380
3209	28.0	29.0	1.0	.210
3210	29.0	30.0	1.0	.338
3211	30.0	31.0	1.0	.716
3212	31.0	32.0	1.0	.146
3213	32.0	33.0	1.0	.140
3214	34.0	34.0	1.0	.160
3215	34.0	35.0	1.0	.078

0.278/g.u

NORTH AIR MINES LTD. DRILL HOLE RECORD

INCLINATION BEARING		PROPERTY: WILLA	LENGTH: 30.7	HOLE No. 87-143	
COLLAR		LOCATION:	HOR. COMP: VERT. COMP:	Sheet: 1 of 1	
		ELEVATION:	BEARING:	LOGGED BY: RJ RECHETT	
		COORDINATES:	BEGAN: COMPLETED:	SAMPLED BY:	
			CORE SIZE: BQ RECOVERY:		

INTERVAL (Specify ft. or m) From To	RECOV.	DESCRIPTION	MINERALIZATION	GRAPHIC LOG	SAMPLES				ASSAYS (Specify %, oz/ton or gm/tonne)					
					No.	From	To	Length						
0	18.5	<p>GREY FINE GRAINED FELDSPAR PORPHYRY</p> <p>m grey - lt grey; mgt - fgr; massive 20% indistinct 1/10 - 1mm felds xstals in vgr - aphanitic ground; 1/2% diss py; 3% diss & indistinct clots epidote; core broken 3 - 15cm @ 35 - 70°, fractures coated gypsum or occasionally chlorite; 2 - 2 b.c. 1 - 3cm 2.7 - 3.4 b.c. black-dk green chlorite & gypsum coated fractures @ 25 - 40° 7.25 - 7.6 b.c. gypsum coated fractures @ 50 - 60° 8.15 - 8.4 1/2 - 2cm blebs epidote & py 8.7 1cm qtz vein @ 60° 8.7 - 8.9 b.c. mgt frags @ 35° 9.5 black qtz string 1 - 3mm @ 40 - 50° 11.95 - 13.3 black lamprophyre dyke. Vct @ 45° 1/2 cm chilled margin; lct 45° 14.1 close spaced 1mm gypsum coated fractures @ 35° 5.4 chlorite slicks 50° 3.5 - 4.3 green-green heterolithic bx vct @ 75° 15.1 3cm grey quartz vct sharp at 45° lct indistinct; vein or foliation? 17.7 1 - 3mm blebs white calcite in black chloritic fractures @ 70°</p>												
18.5	30.7	<p>GREY FELDSPAR PORPHYRY & VOLC FRAGMENTAL.</p> <p>mottled m-dk grey - m-lt blue grey - lt grey; mgt; massive indistinctly fragmental; fragments ~ 1 - 20cm 80% felds porph 20% dk green fgr volcanic; 1 - 7% 1/10 - 1mm pyrite diss throughout; mgt 1/2 - 2mm black indistinct, hard qtz veinlets 1 - 10mm throughout; core broken 10 - 30cm @ pred 70 - 80° 23.87 - 24.70 dk green lamprophyre dyke vct @ 55° 4mm chilled margin lct @ 60° 5mm chilled ct. 24.7 - 25.1 b.c. 24.7 8cm healed w/lt bx & qtz - dk grey. 26.3 pink 4cm white vein @ 40° 27.7 3cm finely banded dk/lgt grey qtz vein @ 45° 30.0 2mm chlorite gypsum string @ 30° 30.5 3mm chlorite gypsum string @ 30° 29.8 3cm flt bx @ 45° healed qtz frags & blebs py</p>												

EOH 30.7 RJ Rechett EOH 1/81

NORTHAIR MINES LTD. DRILL HOLE RECORD

INCLINATION		BEARING	PROPERTY: WILLA	LENGTH: 51.3	HOLE No. 87-145	
COLLAR			LOCATION:	HOR. COMP:	VERT. COMP:	
			ELEVATION:	BEARING:		Sheet: 1 of 2
			COORDINATES:	BEGAN:	COMPLETED:	
				CORE SIZE: BQ		RECOVERY:
					LOGGED BY: R. SKEETT	
					SAMPLED BY: T. OLSEN	

INTERVAL (Specify ft. or m) From To	RECOV.	DESCRIPTION	MINERALIZATION	GRAPHIC LOG	SAMPLES				ASSAYS (Specify %, oz/ton or gm/tonne)											
					No.	From	To	Length												
0	6.5	GREEN GREEN METEOROLITHIC FRAGMENTAL dk greenish grey - dk brown grey; fgr; subangular dk brown volcanic fragments 1-3cm 20% in m dk grey green f-mar; felsic matrix; 3% diss py 4.5-5.2 1-3mm gypsum str @ 5°																		
6.5	14.5	PURITIC GREY FELDSPAR PORPHYRY m grey; mar; massive, felsic; in part crackle brkd. indistinct H grey 1/2-2mm felds crystals in fgr H grey felsic matrix; v irreg blebs & diss py 7%, occul 1/2-1cm bleb & diss cp 2%; patches diss mag with py & 1-2 cm blebs anh; core broken 5-20cm 8.8 5mm bleb cp. 9.2 3cm bleb anh, 2-4mm brown garnet. 9.9 2cm bleb cp. 10.0 1cm bleb cp. 10.6 20% diss cp over 6cm 11.2 3cm bleb anh 13.6 shearing & 3mm gr vein @ 5° 13.8 3mm gypsum str @ 15° 14.6 coarse py bleb btwn frags 3cm 1-2 cm blebs cp over 15cm				19203	8.0	9.0	1.0	.126										
					204	9.0	10.0	1.0	.152											
					205	10.0	11.0	1.0	.212											
					206	11.0	12.0	1.0	.128											
					207	12.0	13.0	1.0	.076											
					208	13.0	14.0	1.0	.280											
					209	14.0	15.0	1.0	.254											
					210	15.0	16.0	1.0	.168											
					211	16.0	17.0	1.0	.338											
					212	17.0	18.0	1.0	.148											
					213	18.0	19.0	1.0	1.130											
					214	19.0	20.0	1.0	.296											
					215	20.0	21.0	1.0	.332											
					216	21.0	22.0	1.0	.174											
					217	22.0	23.0	1.0	.074											
14.5	21.0	GREEN PYRITE SCHALCOPRITE MIN FELDS PORPHYRY FRAGMENTAL m grey - m greenish grey - yellow; f-mar; massive; occult indistinct 5-10cm felds porph fragment; Min diss & v ragged blebs py 10% & cp 7%, 1-2mm crst magnetite within & rimming sulphides; patches H green epidote; core broken 3-20cm @ 40-70° chlorite coated fractures; 14.7- 1/2-3cm coarse pyrite & 3-10mm cp blebs 15.4 1-2cm blebs py 1/2-1cm cp; sulph rimmed 1/2 mm magnetite; 16.0-16.3 15% py 15% cp coarse irreg 1-3 cm blebs. 17.5-17.8 ragged 8cm bleb py & cp, 1-3mm blebs magnetite 18.3-20.5 patches diss & blebs 3-10mm cp 10%; py 10%. 19.9 irreg fract @ 30° 20.5 irreg chlorite coated fractures.																		

0.272 / 14.0

NORTHAIR MINES LTD. DRILL HOLE RECORD

INCLINATION	BEARING	PROPERTY: WILLA	LENGTH: 21.0 m	HOLE No. 87-146
COLLAR +46°39'40"	267°58'03"	LOCATION: 950 S	HOR. COMP. VERT. COMP.:	Sheet: 1 of 1
		ELEVATION: 1025 m	BEARING: 267°58'03"	LOGGED BY: RJBECKETT
		COORDINATES:	BEGAN: Feb 2 COMPLETED: Feb 2	SAMPLED BY: T. OLSEN
		SECTION 10000	CORE SIZE: 3Q RECOVERY: ~100%	

INTERVAL (Specify ft or m) From To	RECOV.	DESCRIPTION	MINERALIZATION	GRAPHIC LOG	SAMPLES			ASSAYS (Specify %, oz/ton or gm/tonne)					
					No.	From	To	Length	Au %	Cu %			
0	9.0	SILICIFIED FELDSPAR PORPHYRY FRAGMENTAL. H grey - m-dk greenish grey; f-mag; irreg indistinct fragmental - massive porphyritic text - r-far amphibole felsic v hard; 2-5% diss 1/10-3mm py; core broken 3-25cm @ 50-70° 1.0 2cm blebs py 1.35 diss py & ep over 2cm 3.35 3mm gypsum veinlet @ 50° 3.36 2mm py, ep veinlet @ 20° 2.45 chlorite coated fracture @ 30° 3.8 1-2mm chlorite fractures @ 30° 4.2-4.8 dk green far int volc frags in lt grey pyritic siliceous matrix 5.4- 10cm black & white veined calcareous 6.0-6.2 20% diss & 1-3mm blebs py 7.3 gypsum & chlorite coated fractures 7.8-8.1 gypsum & chlorite coated fractures @ 30° 8.7-9.0 60% py, 20% mag @ 30° blebs calcite. H of intermingled volc & feldspar porph & patches coarse pyrite.											
					0	3244	0.0	1.0	1.0	.260			
						3245	1.0	2.0	1.0	.224			
						3246	2.0	3.0	1.0	.104			
						3247	3.0	4.0	1.0	.136			
						3248	4.0	5.0	1.0	.100			
						3249	5.0	6.0	1.0	.036			
						3250	6.0	7.0	1.0	.056			
					14	151	7.0	8.0	1.0	.138			
						152	8.0	9.0	1.0	.124			
						153	9.0	10.0	1.0	.054			
						154	10.0	10.7	0.7	.080			
9.0	21.0	DARK GREEN MAFIC VOLCANIC dk blue green - black far massive 10% amphibole x tabs 1/10-1mm in far mafic - volc; decal 1-3mm chlorite pyrite veinlets throughout @ 30-50°; 1-3mm lt green epidote & "bleaching" veinlets, irreg; wk foliation - orientation of amph cryst at 20-20°; core broken 10-40cm @ 30-70° fractures coated gypsum. 9.25-9.42 50% coarse gr py, 30% mag, 3-5mm blebs ep. 9.8-10.4 20% 1/2-2cm blebs py, rimmed magnetite. 10.6 5-10mm blebs py 10.5-12.1 H grey hard siliceous - 15% 1-3mm grs py & 1-2mm veinlets chlor & py. @ 30-40° 16.2 irreg veinlet py @ 5° & 3-5mm blebs py rimmed mag & epidote 1-3mm blebs ep. 16.6-16.9 irreg blebs py & mag. EOM 21.0 RJ Beckett Feb 8/87											
					14	155	16.0	17.0	1.0	.032			

0.133 / 9.0

↑

NORTHAIR MINES LTD. DRILL HOLE RECORD

INCLINATION		BEARING		PROPERTY: WILLA.		LENGTH: 21.0		HOLE No. 87-148	
COLLAR	-45°		270°	LOCATION: G505		HOR. COMP: VERT. COMP:		Sheet: 1 of 2	
				ELEVATION: 1025		BEARING: 270°		LOGGED BY: RJ BECKETT	
				COORDINATES:		BEGAN: COMPLETED:		SAMPLED BY: T. OLSEN	
				SECTION 100001		CORE SIZE: 1.3 Q		RECOVERY: 1100%	

INTERVAL (Specify ft. or m) From To	RECOV.	DESCRIPTION	MINERALIZATION	GRAPHIC LOG	SAMPLES				ASSAYS (Specify %, oz/ton or gm/tonne)				
					No.	From	To	Length	Au % Cu %				
0	7.9	<p><u>PURITE & CHILICOPRITE MIN⁺ FELDSPAR PORPHYRY</u> H green-grey buff; var; massive; irreg porphyritic; 10-20% 1/2-3mm feldspar crystals in fine felsic matrix; 1-3cm patches diss py & epidote scattered throughout; 5% py; occ 2-4cm bleb anhydrite; irreg blebs 3-15mm & diss cp 2-5%; core broken 10-80cm @ 40-80° fract coated gypsum & chlorite. 2.4 2-3mm blebs diss py & cp. 2.9 5-15mm blebs py & 2-5mm blebs cp over 12cm, 2-3mm grains magnetite, diss epidote; 3.76 5cm bleb anh. 3.8-4.05 diss cp 1-2mm 5% 4.15 diss py, cp, mag. over 5cm. 4.6 2mm gypsum coated fracture @ 15° 6.05-6.5 15% diss & 1-3mm blebs cp. 6.8 5-15mm blebs py & 3-12mm blebs cp. irreg veinlets @ ~70° 1st irreg & sharp @ ~70°</p>	<p>py 5% cp 2-5%</p>										
7.9	15.0	<p><u>BARK GREEN FINE GRAINED MAFIC VOLCANIC</u> dk greenish grey - dk green; var; massive; numerous irreg H green qtz veins; occ 2-15mm blebs & veinlets py 5%; occ 1-5mm blebs & veinlets cp 2% 8.2 1cm white qtz carb vein @ 90° 8.5 3mm gypsum veinlets @ 60° 8.7 3-5mm blebs cp over 2cm @ ~70° 8.9 30% py 3-10mm, 30% mag; 20% red brown garnet. 9.4 1-3mm veinlets cp 5% @ 80-90° 9.5-10.6 green feldspar porph. 10.42 irreg 1-3mm blebs py, cp & 1/2mm grain measured gold? 12.65 irreg 1-3cm bleb py, 2-5mm cp. 10.58 2cm bleb py, 3-5mm bleb cp. 14.5 irreg 5-10mm blebs py & magnetite. 1st sharp @ 35°</p>	<p>py 5% cp 2%</p> <p>Hu?</p>										
15.0	21.0	<p><u>QUARTZ VEINS & QUARTZ LATITE PORPHYRY</u> H grey-white; m-far; massive porphyritic - mass qtz vein; 50% qtz vein 15-60cm wide, irregular & 50% qtz latite porphyry</p>											

14	179	0.0	2.0	2.0	.604				
	180	1.0	3.0	1.0	.500				0.472/5.0
	181	3.0	4.0	1.0	.452				
	182	4.0	5.0	1.0	.202				↓
	183	5.0	6.0	1.0	.056				
	184	6.0	7.0	1.0	.070				
	185	7.0	8.0	1.0	.032				
	186	8.0	9.0	1.0	.060				
	187	9.0	10.0	1.0	.080				
	188	10.0	11.0	1.0	.112				
	189	11.0	12.0	1.0	.005				
	190	17.0	18.0	1.0	.014				

NORTHAIR MINES LTD. DRILL HOLE RECORD

INCLINATION		BEARING		PROPERTY: WLLA	LENGTH: 20.4 m	HOLE No. 87-149	
COLLAR	43°32'22"	92°31'37"	LOCATION: 9505	ELEVATION: 1025m	HOR. COMP:	VERT. COMP:	Sheet: 1 of 1
			COORDINATES:	SECTION 1000011	BEARING: 92°31'37"	BEGAN:	COMPLETED:
					CORE SIZE: 30	RECOVERY:	LOGGED BY: R.J. BECKETT
							SAMPLED BY: T. OLSEN

INTERVAL (Specify ft. or m) From To	RECOV.	DESCRIPTION	MINERALIZATION	GRAPHIC LOG	SAMPLES			ASSAYS (Specify %, oz/ton or gm/tonne)												
					No.	From	To	Length												
0	3.6	<p>PYRITIC GREEN FELDSPAR PORPHYRY</p> <p>m-gren; fgr; v-mgn pyritic 10% po 5% cp 2% core v broken; 1-10 cm @ 40-80° chlorite coated fractures.</p> <p>0.5 6cm mass py & po 0.7 10cm mass py 60% po 40% 1.0-1.3 mass pyrite 90% 3-5mm bleb cp. 2.0 chlorite coated fracture 2.05 1cm bleb cp @ 35° 2.5-3.6 irreg 1-2mm white gypsum strgs. 3.6 2cm vgr carb vein w blebs @ 80°</p>																		
3.6	14.5	<p>GREEN HETEROLITHIC FRAGMENTAL</p> <p>m-grenish green, m-gren - lt green - dk green; m-cgr massive med gr fragmental 3-30mm predominant occur up to 30cm; frs sub angular - sub rounded; 60% dk green fgr volc, 25% felds porph, 15% v-lar buff silicified volc? m-m-lt green green felsic pyritic matrix; 3% py w blebs 3-10mm interstitial fragments; Hct indistinct & grad over ~1m.</p>																		
14.5	20.4	<p>GREEN FELDSPAR PORPHYRY</p> <p>m-lt greenish green; m-gr massive porphyritic 30% white-lt green 1/4-2mm felds crystals;</p> <p>16.8-17.8 black lamprophyre dyke. Hct @ ~90°, lct @ 90° 19.1-19.7 lamprophyre dyke uct @ 65°; lct 30°</p> <p>EOH. 20.4 R.J. Beckett Feb 28/87.</p>																		

19
19

195	0.0	1.0	1.0	.084
196	1.0	2.0	1.0	.058
197	2.0	3.0	1.0	.046
198	3.0	4.0	1.0	.010
199	4.0	5.0	1.0	.005
200	5.0	6.0	1.0	.008
201	6.0	7.0	1.0	.018
202	7.0	8.0	1.0	.064

CHECK

NORTHAIR MINES LTD. DRILL HOLE RECORD

COLLAR	INCLINATION	BEARING	PROPERTY: WILLA.	LENGTH: 30.13	HOLE No. 87-150
	-90°	—	LOCATION: 9505	HOR. COMP:	VERT. COMP:
			ELEVATION: 1025 m	BEARING:	
			COORDINATES:	BEGAN:	COMPLETED:
			SECTION 1000N	CORE SIZE: BQ	RECOVERY: ~100%
					SHEET: 1 of 2
					LOGGED BY: RJ BECKETT
					SAMPLED BY: T. OLSEN.

INTERVAL (Specify ft or m) From To	RECOV.	DESCRIPTION	MINERALIZATION	GRAPHIC LOG	SAMPLES				ASSAYS (Specify %, oz/ton or gm/tonne)	
					No.	From	To	Length	Au ⁶⁷	Cu ⁷⁰
0	4.5	GOLD, PYRITE, CHALCOPHYRITE MINERAL FELDS PORPH FRAGMENTAL dk greengreen - maren - Itrey. f-mar. v irreg text. 1-3 cm blebs py, epidote & coarse subhedral Felds porph frags 3-15 cm in far dk grey green epidote & pyrite matrix; 10-15% py, 5-7% cp. 6 grains - smeared, native gold? core broken 2-15 cm, numerous chlorite coated fractures @ 25-40° 1 ct gradational over 2 m.	py 10-15% cp 5-7% gold *							
		.45 2cm bleb anh								
		.55 2cm bleb anh								
		2.15 2cm bleb cp 1/1 mm smeared bleb gold.	Au?							
		2.5 10 cm sulphides, 3-5 cm bleb cp, smeared grains Au, matted py & magnetite	Au?							
		2.75 irreg 2-4 cm bleb sulph, 2-5 mm blebs mag								
		3.07 cp, 13-10 mm blebs py; grains poss gold	Au?							
		3.07 irreg 3cm blebs sulphides 3-5 mm blebs ep, 1 grain poss smeared gold;								
		3.2 20 cm black chlorite coated slips @ 30- 40°								
		3.55 3-5 cm bleb cp, 1 grain smeared gold;?	Au?							
		3.7 20% diss cp over 10 cm.								
		3.8 2cm bleb cp, 1-3 mm blebs mag.								
		4.0-4.8 3-5 cm patches epidote								
		4.15 3cm patch mar sulphide py cp, grain Au?	Au?							
		4.3 black chlorite coated slip @ 20°								
		5.07 irreg 5-15 mm bleb py, blebs 2-3 mm cp.								
		5.15 irreg 3-10 mm blebs py, 2.5 mm blebs cp.								
		5.4 irreg 2cm bleb cp.								
		5.4-5.6 irreg fract gyp coated @ 25°								
		5.8 3-5 mm veinlet cp, grain smeared gold	Au.							
		6.15 3-5 mm irreg blebs cp								
		6.4 gypsum coated fractures @ 40°								
		6.6 3-15 mm blebs py, cp.								
		7.75 1cm bleb anh.								
4.5	24.0	PYRITIC DARK BLUE GREY, CALCAREOUS INTERMEDIATE VOLCANIC dk blue grey - dk brown grey - m blue grey. far; mass - v irreg blebs pyrite; occul fragment 5-15 cm Felds porph, 7% py in irreg 3-15 mm blebs; weakly calcareous 1-3% calcite; intermediate volcanic?; 1-2% cp 1-3 mm blebs; core broken 3-27 cm @ 40-60°, fractures coated gypsum and or chlorite;	py 7% cp 1-2%							
		9.6 2cm bleb anh.								

14	191	0.0	2.0	2.0	.022
	192	2.0	3.0	1.0	.616
	193	3.0	4.0	1.0	.340
	194	4.0	5.0	1.0	.244
	195	5.0	6.0	1.0	.254
	196	6.0	7.0	1.0	.100
	197	7.0	8.0	1.0	.100

} 0.274 - 16.0

NORTHAIR MINES LTD. DRILL HOLE RECORD

INCLINATION		BEARING	PROPERTY:	LENGTH:	HOLE No. 87-150	
COLLAR			LOCATION:	HOR. COMP:	Sheet: 2 of 2	
			ELEVATION:	BEARING:	LOGGED BY:	
			COORDINATES:	BEGAN:	COMPLETED:	
				CORE SIZE:	RECOVERY:	
					SAMPLED BY:	

INTERVAL (Specify ft. or m) From To	RECOV.	DESCRIPTION	MINERALIZATION	GRAPHIC LOG	SAMPLES				ASSAYS (Specify %, oz/ton or gm/tonne)										
					No.	From	To	Length	Au %	Ag %	Cu %	Other							
10.05		urea 2cm blebs cp																	
10.2		urea blebs & diss py & cp over 5cm																	
		3-5mm bleb red brown garnet																	
11.0		4cm blebs anh																	
8.5-11.5		m-ft green-grey, indistinct																	
		1-3cm fragment in pyrite & epidote																	
		rich matrix																	
15.0		1cm bleb cp & 1mm grain gold flake	gold.																
		1/10-1mm man																	
15.24		ragged 3-10mm blebs py 1-2mm																	
		magnetite & 1-3mm cp over 15cm																	
15.8-16.4		15% urea 3-10mm blebs py & as																	
		matrix to 1-3cm fragments																	
16.6		2cm bleb anh																	
17.1-18.0		ragged 3-10mm blebs py, 1-3mm																	
		magnetite, 10% py																	
19.48-19.6		30% urea py 1-3mm blebs cp																	
20.8-21.3		15% urea blebs 3-15mm py &																	
		1-3mm cp 5%; 2-3mm grass magnetite																	
21.65		urea 5-15mm bleb py, poss 1/4mm gold	flu?																
		grain in the matrix 1/2cm from solid																	
21.7		10cm 30% py & ragged; 1-3mm cp																	
		1-3mm magnetite																	
22.0-		10cm 3-5mm blebs py 20%																	
		3-5mm cp, 5% man 5%																	
22.4		chlorite fracture @ 15°; blebs																	
		3-8mm py & cp, slick parallel core axis																	
22.75		1/2cm veinlet py, 3-5mm blebs																	
		cp & man																	
23.4-23.6		urea 3-5mm blebs py & cp 5%																	
22.0		weak foliation - 1-3cm plat dr green																	
		fragments or ath remnants, elongated																	
		at 30-40°																	
23.3		calite coated shikensides @ 15° slicks at																	
		80° to core axis																	
23.8		4cm grey brown calite vein @ ~ 50°																	
23.8-24.0		6.C.																	
24.0	30.18	GREENISH GREY FELDSPAR PORPHYRY																	
		m greenish grey - grey brown mar; massive, 2% diss py;																	
		occasional 2-5mm white urea qtz veins @ 30-50°; 20% indistinct																	
		felds x tals in var - fav matrix felsic																	
		29.5-30.18 gypsum vein @ 20-40°																	

14
14
14

EOH 30.18
2018
see

NORTHAIR MINES LTD. DRILL HOLE RECORD

INCLINATION		BEARING	PROPERTY: WILLA	LENGTH: 21.0	HOLE No. 87-151
COLLAR	-45°	90°	LOCATION: 9505	HOR. COMP: VERT. COMP:	Sheet: 1 of 1
			ELEVATION: 1025 m	BEARING: 90°	LOGGED BY: R. BECKETT
			COORDINATES:	BEGAN: COMPLETED:	SAMPLED BY: T. OLSEN
			SECTION 15000'N	CORE SIZE: BQ RECOVERY: 100%	

INTERVAL (Specify ft. or m) From To	RECOV.	DESCRIPTION	MINERALIZATION	GRAPHIC LOG	SAMPLES				ASSAYS (Specify %, oz/ton or gm/tonne)					
					No.	From	To	Length						
0	18.4	<p>PURE ANHYDRITE GREY FELDSPAR PORPHYRY m-14 grey; mat massive, porphyritic 30-40% 1/10-2mm white-14 grey feldspar xstls; occul irreg blebs 3-10cm diss-cp-py & mag & epidote; 3% pyrite; sparse 1- 5mm blebs cp ~1%; occul 2-3mm white-grey gypsum strgs @ 0-5°; 5% anh, blebs 3-8cm core broken 10-20cm @ pred 70-90°, occul 15-30°. clean fract - coated gypsum. 2.3 5cm anh 2.4 5cm anh 3.1 5mm 10mm bleb cp. 3.3 10mm py 1-3mm blebs cp. 3.55 5mm bleb cp. 4.2-4.4 20% py 3-10mm, 3-5mm cp. 5.0 5mm gr calc strgs @ 45° 5.3-5.5 irreg 2-15mm veinlets cp. 6.0 gypsum coated fractures @ 15° 7.1 gypsum coated fractures @ 40 over 20cm 8.1 3mm green gypsum veinlet @ 3° 8.85 - 9.45 occul blebs diss py 1-2cm & 1-3 mm blebs cp. 2% cp. 9.5 8cm bleb anh & gypsum strgs 3mm @ 0° 10.75-11.1 40% anh, 15% py, 5% mag, 3% cp & epidote. 11.0 chlorite coated fracture @ 25°. 11.3 1cm anh, py & mag. 11.5 7cm bleb anh. 11.85 5cm bleb py, 3-5mm cp & mag. 11.98 irreg 3-5mm bleb cp. 12.15-12.75 20% coarse py, 10% mag; irreg clots epidote 13.4-13.8 b.c. 14.3 gypsum coated fractures @ 60° l.et. @ ~70°</p>	<p>py 3% cp 1% anh 5%</p>											
					14	216	0.0	2.0	2.0	.342				
						217	2.0	3.0	1.0	.176				
						218	3.0	4.0	1.0	.268				
						219	4.0	5.0	1.0	.146				
						220	5.0	6.0	1.0	.144				
						221	6.0	7.0	1.0	.088				
						222	7.0	8.0	1.0	.232				
						223	8.0	9.0	1.0	.236				
						224	9.0	10.0	1.0	.440				
						225	10.0	11.0	1.0	.160				
					18	551	11.0	12.0	1.0	.148				
						552	12.0	13.0	1.0	.130				
18.4	21.0	<p>BLUEGREEN INTERMEDIATE VOLCANIC m blue grey - occul brown grey; fine, massive; intermediate volcanic; occul 1/2 buff 1-3cm fragment.</p>												

E.O.H. 21.0
 R. Beckett
 Feb 8/67

NORTHAIR MINES LTD. DRILL HOLE RECORD

INCLINATION		BEARING	PROPERTY: WILLA.	LENGTH: 40.5	HOLE No. 87-152
COLLAR			LOCATION:	HOR. COMP: VERT. COMP:	Sheet: 1 of 2
			ELEVATION:	BEARING:	LOGGED BY: R. S. BECKETT
			COORDINATES:	BEGAN: COMPLETED:	SAMPLED BY: T. OLSEN
			CORE SIZE: 30	RECOVERY: 100%	

INTERVAL (Specify ft. or m) From To	RECOV.	DESCRIPTION	MINERALIZATION	GRAPHIC LOG	SAMPLES			ASSAYS (Specify %, oz/ton or gm/tonne)					
					No.	From	To	Length					
0	15.2	<p><u>GREEN PYRITIC FELDSPAR PORPHYRY</u> 1-m dr. m. - green buff - yellow; mar; massive porphyritic 10-30% 1/10-2mm feldspar crystals in vfg. - aluminite groundmass; 15% pyrite 1/2-4cm irreg grains throughout rimmed in pt with dk green chlorite; sparse pyrrhotite & mag & cp; core broken 3-30cm @ 80-90° thin chlorite coating; J. 9-6.0 b.c. & numerous chlorite coated fractures 75-90° 2.1 1cm gypsum & carbonate veinlets & ? gouge @ 45° 2.4 20cm bc; gyp coated frct @ 45° 3.6-4.0 b.c. irreg frct. 4.55 3-5mm bleb cp. 4.5-5.0 gyp coated fractures @ 90° 8.25 4cm bleb py with 1-3mm bleb cp. 9.7 3-10mm blebs cp 10.25 4cm bleb py with 3-5mm bleb cp. 1-3mm blebs mag at py margin. 10.7 diss mag next to 4cm py 13.0 10cm b.c. 13.38 3-5mm blebs cp. 15.15-15.35 4cm soft black calcareous gouge @ 35° 15.7-16.0 irreg 3mm gouge @ ~ 5°</p>	<p>Pu 15% Pb 2% cp 2 1/2%</p>	18	553	4.2	4.7	0.5	.006				
						554	9.5	10.5	1.0	.048			
15.2	18.7	<p>lt contact <u>GREEN MASSIVE-INTERMEDIATE-VOLCANIC</u> m. greenish grey; fgr; mass; int volc 16.0 20cm b.c. Lot sharp @ 80- 2cm pyrite, diss & chlorite.</p>											
18.7	34.2	<p><u>PYRITE</u> m-dk grey - yellow; mar; mass - porphyritic - irreg blebs 1/2-2cm pyrite 7%. Pyrite rimmed 1-3mm black-dk green chlorite; core broken 5-30cm @ 60-80°; sulphides as matrix to incipient crackle breccia; Min cp irreg 3-15mm blebs adjacent to pyrite; 3% sparse pyrrhotite < 1% 19.0 3cm healed fault breccia @ 35-45° 2-3 cm gouge. 19.2 5mm bleb cp. 19.7 diss mag in 3cm bleb py.</p>	<p>Pu 7% cp 3%</p>		555	19.0	20.0	1.0	.016				

NORTH AIR MINES LTD. DRILL HOLE RECORD

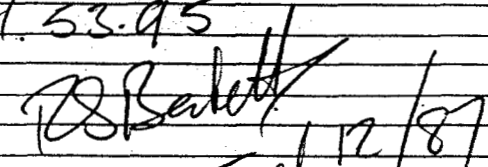
INCLINATION		BEARING		PROPERTY:		LENGTH:		HOLE No. 87-153	
COLLAR				LOCATION:		HOR. COMP: VERT. COMP.:		Sheet: 2 of 2	
				ELEVATION:		BEARING:		LOGGED BY:	
				COORDINATES:		BEGAN: COMPLETED:		SAMPLED BY:	
						CORE SIZE: RECOVERY:			

INTERVAL (Specify ft. or m) From To	RECOV.	DESCRIPTION	MINERALIZATION	GRAPHIC LOG	SAMPLES				ASSAYS (Specify %, oz/ton or gm/tonne)				
					No.	From	To	Length					
23.5		2-3 mm blebs cp & 3-8 mm py adjacent to brown fragment.		19	179	23.0	24.0	1.0	.162				
23.6		3 mm cp veinlet @ 20°			180	24.0	24.6	0.6	.094				
24.5		magnetite diss 1/2 mm adjacent to pyrite.			181	24.6	24.8	0.2	.074				
24.7		6 cm 30% py, 20% magnetite, 10% cp, 2 grains smeared gold.			182	24.8	26.0	1.2	.032				
26.0-26.2		diss py 15% & mag 2%.			183	26.0	27.0	1.0	.162				
28.45-28.7		40% py coarse blebs interstitial to angular frags; 10% cp; 1 grain smeared gold.			184	27.0	28.4	1.0	.338				
30.2-31.15		1 cm blebs py 10% & cp 3% 2 grains 1/10 mm possible smeared gold sparse magnetite 1/10-1 mm grains adjacent pyrite.			185	28.4	29.0	1.0	.336				
32.62		4 cm bleb py & cp.			186	29.0	30.0	1.0	.214				
32.91		2 cm irreg bleb cp.			187	30.0	31.15	1.15	.448				
32.5-33.3		calcareous.			188	31.15	32.0	0.85	.078			0.219	1/10
32.7-33.13		10 mm calcite strgs @ 80°			189	32.0	33.0	1.0	.178				
33.6-34.3		b.c.			190	33.0	34.0	1.0	.016				
34.0		3 cm qtz & talc healed fault bx @ 40°			191	34.0	35.0	1.0	.162				
34.3		3 cm pyrite bleb 1-3 mm cp.			192	35.0	36.0	1.0	.096				
35.9		3 mm qtz & calcite strgs @ 30-40°			193	36.0	37.0	1.0	.380				
36.3-36.9		blebs 3-5 mm cp adjacent to 1-3 cm py interstitial to fragments. 1-2 cm blebs anh.			194	37.0	38.0	1.0	Tr.				
37.1		20% py 10% cp coarse blebs.											
37.4-37.55		3-5 mm blebs cp adjacent to coarse py.											
37.5-38.0		b.c. gypsum coated fractures @ 45°.											
38.0-47.8		lct. v. indistinct. DARK BROWN BIOTITE VOLCANIC / BLUE GREEN FELDSPAR PORPHYRY in blue green - dk brown green; + mgr; coarse fragmental or cutting contact at shallow angle; section dk brown biotite volcanic & in blue green fgr feldspar porphyry.											
41.7-42.3		b.c.											
44.7		10 cm bc											
EOH 47.8													

D. S. Bennett
Feb 10/87.

NORTHAIR MINES LTD. DRILL HOLE RECORD

INCLINATION		BEARING		PROPERTY:	LENGTH:	HOLE No. 87-154	
COLLAR				LOCATION:	HOR. COMP:	VERT. COMP:	Sheet: 2 of 2
				ELEVATION:	BEARING:		LOGGED BY:
				COORDINATES:	BEGAN:	COMPLETED:	SAMPLED BY:
					CORE SIZE:		RECOVERY:

INTERVAL (Specify ft. or m) From To	RECOV.	DESCRIPTION	MINERALIZATION	GRAPHIC LOG	SAMPLES				ASSAYS (Specify %, oz/ton or gm/tonne)											
					No.	From	To	Length												
		37.4-38.1 2-3cm veinlet ep, po @ 5° + irreg 5-15 mm blebs ep, po.																		
		38.3 3-8cm bleb ep, po, post grains smeared gold.																		
		38.6 3cm ep, po. quartz coated fracture @ 85°.																		
		1ct gradational gradual increase in exotic fragments.																		
39.0	53.9	BIOTITE-ALTERED GREEN BROWN HETERO LITHIC FRAGMENTAL m grey - m-dk grey brown; m-far; med text. 20-30% buff - lt grey 20-30cm frags v hard siliceous; patches 20-40cm 20-30% lt brown biotite & blebs py, po & ep. 30% grey sub rounded indistinct felds porph frags - margins altered; core broken 2-15cm @ 40-60° fract coated chlorite.																		
		41.7-41.85 3cm bleb py & 40% biotite.																		
		43.05-43.25 30% py, 10% ep & 40% biotite																		
		43.5-44.0 biotite & 3-5mm py & ep blebs.																		
		45.7-46.3 30% lt 2cm r frags in biotite py ep matrix																		
		46.6-47.25 30% 3-10cm rock frags in biotite & 5% 3-5mm py sparse ep.																		
		47.3 20cm v far laminated 2-4mm sil rock frag.																		
		48.1 1cm qtz vein grey @ 35° M sparse v far med yb. ? or galena																		
		48.3-48.6 v hard v far grey-brown rock frag, brd i pt.																		
		48.8-49.1 30% biotite & 2% 2-3mm py 2% 1-5mm ep																		
		51.2-51.7 6.c black chlorite coated fract @ 70-90°																		
		52.6-53.4 6.c patches biotite, py oxal 1-3mm bleb ep.																		
		EOH 53.95																		
		 Feb 12/87																		

NORTHAIR MINES LTD. DRILL HOLE RECORD

INCLINATION		BEARING		PROPERTY: WILLA		LENGTH: 27.47		HOLE No. 87-158	
COLLAR				LOCATION:		HOR. COMP:		VERT. COMP.:	
				ELEVATION:		BEARING:		LOGGED BY: R. J. BECKETT	
				COORDINATES:		BEGAN:		COMPLETED:	
						CORE SIZE:		RECOVERY:	
								SAMPLED BY: T. OLSEN	

INTERVAL (Specify ft. or m) From To	RECOV.	DESCRIPTION	MINERALIZATION	GRAPHIC LOG	SAMPLES				ASSAYS (Specify %, oz/ton or gm/tonne)
					No.	From	To	Length	
0 16-80		<p>Pyrite, Chalcoprite, Pyrrhotite, Mn²⁺ Feldspar, Pyrite, Bx 14-16 grey (dk grey green, yellow); fgr-cgr: porphyritic 20-40% 1-4mm feldspar crystals in 4-6 mm - 14 grey felsic matrix; viny sulphide veins of py, cp, po - incipient - mod developed crackle breccia with sulphide matrix 1/10-2mm dk green chlorite developed at sulphide-rk ct; Mn 7% py 2% cp 2% po. No amb core broken 3-40cm @ 30-40 70-80 - coated black chlorite; 2.5 5mm bleb cp. 2-6.5 gypsum coated fractures 30° spaced 10-20cm 3-9 viny bleb 3-5mm i 1-2cm py 6.0-6.8 viny 1-3cm blebs py, 2-5mm blebs cp 5% cp. 7.0-9.4 viny blebs 2-10mm py, 2-5mm cp, cp 7% sparse po 1-2% 9.60 grain poss smeared gold 10.1 3mm veinlet py, cp, po 10.9 coarse viny bleb py 2-3cm cp 3-5mm po 2-3mm over 8cm 11.2 viny blebs po, cp 3-5mm over 5cm 11.3 gypsum coated fractures @ 25° 11.3-11.5 viny 3-5mm blebs py, cp, 1 grain possible gold smeared 12.15- 30% py, 20% po, 3-5mm blebs cp over 10cm. 12.92-13.2 viny blebs po 2-3cm, 3-10mm cp. 13.0-16.0 viny 3-10mm blebs po 14.0-17.2 dk green chlor running sulphides 14.7 30% po 3-7mm blebs, 2-5mm cp. 7% over 10cm 14.4 diss map over 6cm. 14.76 5mm bleb cp. 16.72-16.80 60% granular pyr 30% cp.</p>	<p>py 7% cp 2%</p> <p>Ag?</p> <p>Ag?</p>						
16.80 17.25		<p>Fault Breccia & gouge grey green; 2cm qtz calc vein & 2-3mm black chlorite along at 55°; 40% angular felds morph frags w chlorite - pyrite matrix. 17.1 2cm Anorthite volcanic - gran or other suite of 17.1-17.2</p>							

NORTHAIR MINES LTD. DRILL HOLE RECORD

INCLINATION	BEARING	PROPERTY:	LENGTH: 32.92	HOLE No. 87-159
COLLAR		LOCATION:	HOR. COMP.:	VERT. COMP.:
		ELEVATION:	BEARING:	LOGGED BY: T. S. BECKETT
		COORDINATES:	BEGAN:	COMPLETED:
			CORE SIZE:	RECOVERY:
				SAMPLED BY: T. OLSEN

INTERVAL (Specify ft. or (m) From To)	RECOV.	DESCRIPTION	MINERALIZATION	GRAPHIC LOG	SAMPLES				ASSAYS (Specify %, oz/ton or gm/tonne)
					No.	From	To	Length	
0	15.35	<p><u>PYELITIC FELDSPAR PORPHYRY</u> m. grey - dk grey brown; f-mag; mass porphyritic 30-45% indistinct white 1-4mm feld cryst in vfg r felsic matrix; irreg 3-20mm pyrite blebs throughout rimmed 1/2-3mm chlorite & magnetite; 5% py, sparse. cp. < 1% & po < 1%; black chlorite coated fractures irreg 30-60"</p> <p>12.55-13.0 15% py irreg blebs, sparse 1-3mm cp.</p> <p>13.15-13.4 20% py blebs matrix to crackle bx frags 3-15cm.</p> <p>13.6 black chlor fract @ 30°</p> <p>13.6-14.1 volc dk or brown frag.</p> <p>14.2 3mm blebs cp</p> <p>14.45-15.3 1-3cm blebs coarse irreg py 20% & py 10% sparse 1-3mm blebs cp. sulphides rimmed black chlorite</p> <p>15.9 2-5mm blebs cp over 5cm.</p> <p>20.82 3mm veinlet cp @ 70°</p> <p>21.0 15cm bc. chlor-gyp coated list @ 30</p> <p>20.5-23.5 blotchy mgren - green green</p> <p>23.6 1 1/2-2cm grey-white qtz calc string @ 70</p> <p>It is gradational over 1/2 m. - color change greenish grey - to brown</p>	py 5%						
23.55	32.92	<p><u>DAK GREEN INTERMEDIATE VOLCANIC</u> dk green green - greenish black; f; massive 20% 2-4mm hornblende cryst; 5% 2-4mm white qtz veins at 70-90°</p> <p>23.55-23.6 blotchy green green brown irreg 2-3cm grey qtz blebs;</p> <p>30.5-31.1 m-ft green green elvss & 3mm blebs py 3%; class epidote, mag.</p>							

EOH
 108
 T. S. Beckett
 Feb 14 / 87

NORTHAIR MINES LTD. DRILL HOLE RECORD

INCLINATION		BEARING		PROPERTY: WILLA.	LENGTH: 365	HOLE No. 87-161	
COLLAR				LOCATION:	HOR. COMP:	VERT. COMP:	
				ELEVATION:	BEARING:		
				COORDINATES:	BEGAN:		COMPLETED:
				CORE SIZE: 80		RECOVERY:	

LOGGED BY: RJ BECKETT
SAMPLED BY: T. OLSEN

INTERVAL (Specify ft. or m) From To	RECOV.	DESCRIPTION	MINERALIZATION	GRAPHIC LOG	SAMPLES				ASSAYS (Specify %, oz/ton or gm/tonne)
					No.	From	To	Length	
0	14.5	<p><u>GREY FELDSPAR PORPHYRY FRAGMENTAL</u> m grey, greenish grey-dk brown-yellow. F-mar; mass - irreg frags - coarse fragmental 80% grey feldspar porphyry 20% - greenish grey fgr volc; patches fgr bls & blebs py 3% - sparse poq cp 1% patches 2-5 cm diss 1" green epidote; oval patches diss mag with py; core broken 5-30 cm @ 60-90° fract coated pred gypsum or chlorite; 1.7 80% cgr py over 15 cm 2.0 3x7 cm bleb cp, 1-3 cm po over 15 cm 3.0 1-3 mm blebs cp over 5 cm 5.6 3mm gyp veinlet @ 30° 5.6-6.0 diss py, epidote & 1-2 mm blebs cp. 6.3 healed bre - at 45° 7.0-7.7 m brown grey fgr volc 9.2 75% diss epidote over 30 cm 11.2-12.1 dk blue green fgr volc, biotitic 15% & 3 mm blebs py, 3-5 mm cp. 12.1 blebs cgr, irreg py, po, 5-10 mm cp 7% cp over 80 cm</p>	<p>py 3% cp 1%</p>						
14.5	28.3	<p>ct defined in sharp increase in biotite <u>BIOTITE ALTO PIRRHOTITE, CHALCOPRITE MIN, HETEROGENEOUS FRAG-</u> m-dk grey brown - m grey - yellow; m-fgr; mass irreg fragmental text; frags 3-20 cm, poss larger, sub rounded. pred dk green grey volc in fgr felsic matrix</p>							
		<p>14.73-17.1 20% irreg po blebs & matrix to 1-10 cm frags. Min 3-20 mm blebs cp, irreg blebs & diss biotite 18.6-18.8 3-10 mm blebs cp 15% over 25 cm 19.8-19.2 30% 1/2-3 cm blebs py, 2-3 mm blebs cp. 20.0-20.6 15-20 cm patches 30% biotite; 3-10 mm blebs py 20.6-21.3 irreg gypsum coated fractures at 40-50° 21.3 chlorite coated fractures @ 15° 21.4- blebs py, cp & epidote 21.85 1-7 cm bleb cp. 22.7-23.0 4 cm bleb py 3-15, 1-3 cm patches epidote. 24.8 1/2-2 cm irreg veinlet py, cp, sparse mag.</p>	<p>% cp? need</p>						

NORTHAIR MINES LTD. DRILL HOLE RECORD

INCLINATION		BEARING		PROPERTY:	LENGTH:		HOLE No. 87-161	
COLLAR				LOCATION:	HOR. COMP:	VERT. COMP:		Sheet: 2 of
				ELEVATION:	BEARING:			LOGGED BY:
				COORDINATES:	BEGAN:	COMPLETED:		SAMPLED BY:
					CORE SIZE:	RECOVERY:		

INTERVAL (Specify ft. or m) From To	RECOV.	DESCRIPTION	MINERALIZATION	GRAPHIC LOG	SAMPLES				ASSAYS (Specify % oz/ton or gm/tonne)
					No.	From	To	Length	
		25.3 10cm massive py, 5% 1-2mm mag.							
		25.5 1-3cm irreg blebs py, 3-15mm cp							
		20.8-25.7 sparse 2-10mm irregular biotite 3 blebs py, cp; much less than in rem. at let of section							
		25.7-26.3 1/2-3cm blebs py 20%; 1/2-2cm py 10%; 3-5mm cp 7%; patchy biotite;							
		26.7-28.3 15% biotite, 3-10mm blebs cp, 5%.							
28.3	33.7	<u>PURPLISH METEOROLITHIC FRAGMENTAL</u> m-grey-buff to dk grey brown, mgr; heterolithic fragmental ? 10-20cm subrounded felds morph, 20% dk grey brown volcanic; irreg patches 5-40cm dk grey brown, far; pyritic 5-15% moderately biotitic; dis & 2-10mm irreg blebs cp; 3%;							
		30.6-30.8 20% py							
		31.6-32.0 20% py blebs 3-20cm 2% 1-5mm blebs cp; 2 grains possible gold.							
33.7	36.5	<u>GREY BROWN VOLCANIC</u> m-dk grey brown far, mass-wkly foliated @ 30°. 20% dk brown biotite; 1/2-3mm irreg grey qtz veins throughout.							
		34.9 irreg 2cm bleb py, 3-5mm bleb cp							
		35.0 irreg 3-10mm bleb cp							
		EDH 36.5 R. Schell Feb 16/87							

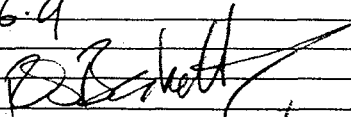
NORTHAIR MINES LTD. DRILL HOLE RECORD

INCLINATION		BEARING	PROPERTY: WILLA	LENGTH: 46.9	HOLE No. 87-162
COLLAR			LOCATION:	HOR. COMP: VERT. COMP:	Sheet: 1 of 3
			ELEVATION:	BEARING:	LOGGED BY: R.J. BECKETT
			COORDINATES:	BEGAN: COMPLETED:	SAMPLED BY: T. OLSEN
				CORE SIZE: BC RECOVERY:	

INTERVAL (Specify ft. or m) From To	RECOV.	DESCRIPTION	MINERALIZATION	GRAPHIC LOG	SAMPLES				ASSAYS (Specify %, oz/ton or gm/tonne)
					No.	From	To	Length	
0	22.5	GREY QUARTZ FELDSPAR PORPHYRY (VOL) FRAGMENTAL m-ft grey, greenish grey, green brown; mar. massive - irreg text: indistinctly porphyritic fragmental: 80-90% qtz, felds morph 30-50% 1-4mm felds cryst grey-white & 3-5% subrounded 3-6mm qtz cryst 5% waxy biotite in mar - aphanitic matrix irreg 2-3mm grey qtz veins throughout ~10%: 10-20% green brown int volcanic subrounded clasts: clasts in grey fgr felsic matrix with irreg blebs & diss py, sparse cp; core broken 10-30cm @ 60-90° gypsum 1/2-2m coated in pt 2.9-3.8 30% biotite, 15% po, 7% cp & 3-15mm irreg blebs. 6.4-6.6 chloritic fractures spaced 1/2-2cm @ 80°	py 5% cp 2%						
		8.1 1cm py vein @ 15° 1-2mm blebs cp.							
		10.0 3cm bleb anh; 10% diss py, 20% epidote 5% po							
		10.8 365mm black chloritic slip @ 40°, 1-5 mm blebs py over 10cm							
		11.0 3-5mm blebs cp.							
		11.5 3mm bleb cp							
		11.7 1/2-2mm up to 8cm coated chlorite fractures @ 85° & bleaching of FSP.							
		13.03 5-10mm bleb py with 2-3mm cp @ 40°							
		13.10 3cm bleb py, 2-3mm bleb cp.							
		13.3 gypsum coated chlorite fract @ 25°							
		13.5 irreg diss py clot 3cm, sparse cp 1-2 mm & dissemin grains smeared gold							Ag?
		13.7 irreg 1/2-3cm bleb cp 3-5mm py; all rimmed 1/2-1mm magnetite. several grains & irreg network smeared gold?							Ag?
		14.8 irreg blebs 5-15mm py 3-5mm cp matrix to 3-5cm frags							
		15.15 3-10mm blebs py, 2-3mm cp poss grains & irreg 1/2-1mm blebs smeared gold							Ag?
		15.3-16.1 irreg 3-5mm blebs py, 1-3mm blebs cp, diss epidote.							
		18.8-19.1 15% ep irreg blebs 10% py, matrix to 3-10cm frags							
		19.6 3mm white qtz shgs @ 30°.							

NORTHAIR MINES LTD. DRILL HOLE RECORD

INCLINATION		BEARING		PROPERTY:		LENGTH:		HOLE No. 87-162	
COLLAR				LOCATION:		HOR. COMP: VERT. COMP:		Sheet: 3 of 3	
				ELEVATION:		BEARING:		LOGGED BY:	
				COORDINATES:		BEGAN: COMPLETED:		SAMPLED BY:	
						CORE SIZE: RECOVERY:			

INTERVAL (Specify ft. or m) From To	RECOV.	DESCRIPTION	MINERALIZATION	GRAPHIC LOG	SAMPLES			ASSAYS (Specify %, oz/ton or gm/tonne)												
					No.	From	To	Length												
38.6 - 38.95		20% 3-10mm blebs py																		
39.1		20% 3-10mm blebs py overl 3cm 1-2mm blebs cp; poss tain gold.	Au??																	
39.55 - 39.72		1-3cm blebs py matrix to 3-5cm frags, 1-3mm po, cp.																		
41.31		irreg blebs py & cp 2-5mm black chlor, mag lined fract wk lamination - elongate																		
43.5		frags @ 25-30°																		
43.9 - 44.1		15% irreg 2-10mm blebs py																		
EOM 46.9		 Feb 17/87																		

NORTH AIR MINES LTD. DRILL HOLE RECORD

INCLINATION		BEARING		PROPERTY: <i>NILLA</i>	LENGTH: <i>21.03</i>	HOLE No. <i>87-163</i>	
COLLAR				LOCATION:	HOR. COMP:	VERT. COMP:	
				ELEVATION:	BEARING:		
				COORDINATES:	BEGAN:	COMPLETED:	
					CORE SIZE:	RECOVERY:	

INTERVAL (Specify ft. or m) From To	RECOV.	DESCRIPTION	MINERALIZATION	GRAPHIC LOG	SAMPLES				ASSAYS (Specify %, oz/ton or gm/tonne)
					No.	From	To	Length	
0	12.2	<p>GREEN MASSIVE FELDSPAR PORPHYRY</p> <p>H grey occul dr grey green; fgr; massive - indistinctly porphyritic - feldst cryst sparse 2-3mm qtz grains; hard; occul subangular basant - m-lt qtz; fgr; 1.5cm massive, felsic - similar to matrix; comp 85% qtz felds; Epidote dis; 5% chlorite; 2% py; occul gyp coated fracture; core broken black chloritic surfaces @ pred 60-80°; occul 2-3mm grey qtz veinlets throughout.</p> <p>0.75 clst 6cm py, epidote magnetite</p> <p>2.6 black chloritic slip @ 30°</p> <p>2.2-2.4 3-5cm clots epidote mag, py</p> <p>3.0-4.5 b.c black chloritic irreg slips.</p> <p>3.0 4cm blob pyrrhotite & rim 2-3mm cp</p> <p>3.2 1cm grey qtz @ 30° Min diss molybd</p> <p>4.4 3-5mm blebs cp.</p> <p>5.9 2cm blebs anh adjoining irreg py, mag blebs.</p> <p>6.3-6.45 patch mag py, mag epidote</p> <p>6.9-7.2 20% py, 15% mag, 5% red brown garnet; occul blebs 2-5mm cp.</p> <p>7.35-7.5 15cm irreg blebs 40% py, 15% cp</p> <p>8.1 3mm qtz gyp strgs @ 50°</p> <p>10.7 15cm b.c</p> <p>1st grad - gradual increase in number & diversity of frags;</p>	<p>Py 2% diss</p> <p>molybdenite</p>						
12.2	21.03	<p>GREENISH GREY PYRIC HETEROLITHIC FRAGMENTAL</p> <p>m greenish grey - buff - lt grey; cgr; massive - fine fragmental text 30% green qtz felds porph; 60% lt buff v fgr rhyolite; matrix li - Pen grey yellow patches py rimmed by magnetite 1/10 - 1/2 mm, fgr felsic; 10% brown volc core broken 2-30cm @ avg 10cm @ 60-80° pred chlor coated fractures.</p> <p>16.7 1/4 - 1cm spaced chlorite coated fractures @ 80°</p> <p>17.1 qtz carb vein & chlor frags @ 80° & chlor slips over 5cm</p> <p>17.4 3mm chlor slip @ 85°</p> <p>E04 21.03</p> <p><i>RJ Beckett</i> Feb 17/97.</p>							