

FIGURES 5 TO 21 FOR
SUMMARY REPORT
OF
GEOLOGICAL, GEOPHYSICAL AND OTHER STUDIES
ON THE
TEL DEPOSIT

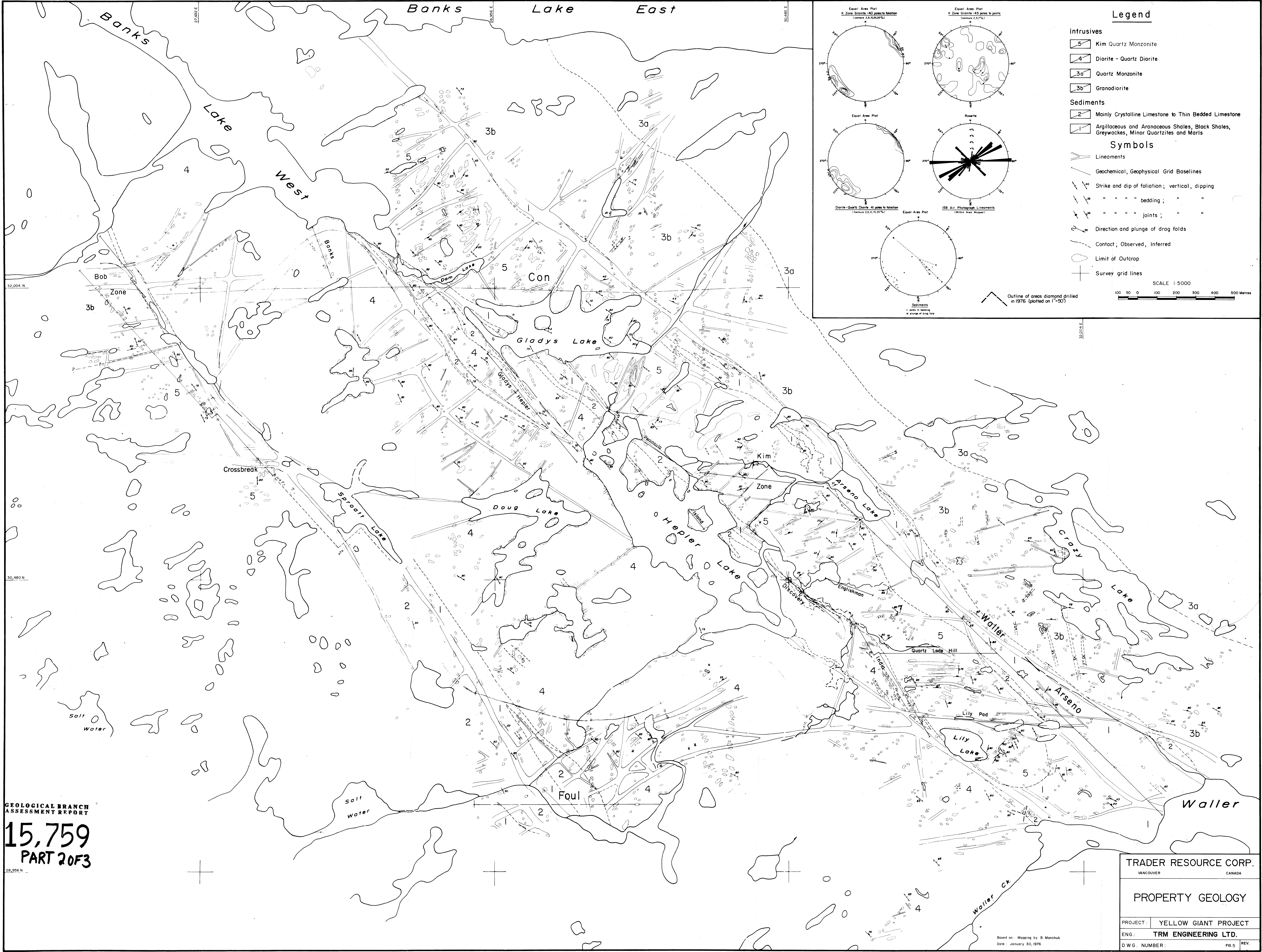
TRADER MINES LTD.
Vancouver, B.C.
February 25, 1987

J.T. SHEARER
G.A. SHORE
S.L. GARDINER

20F3

PART

15759



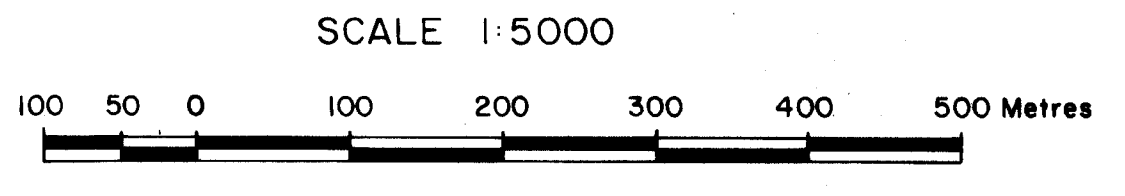
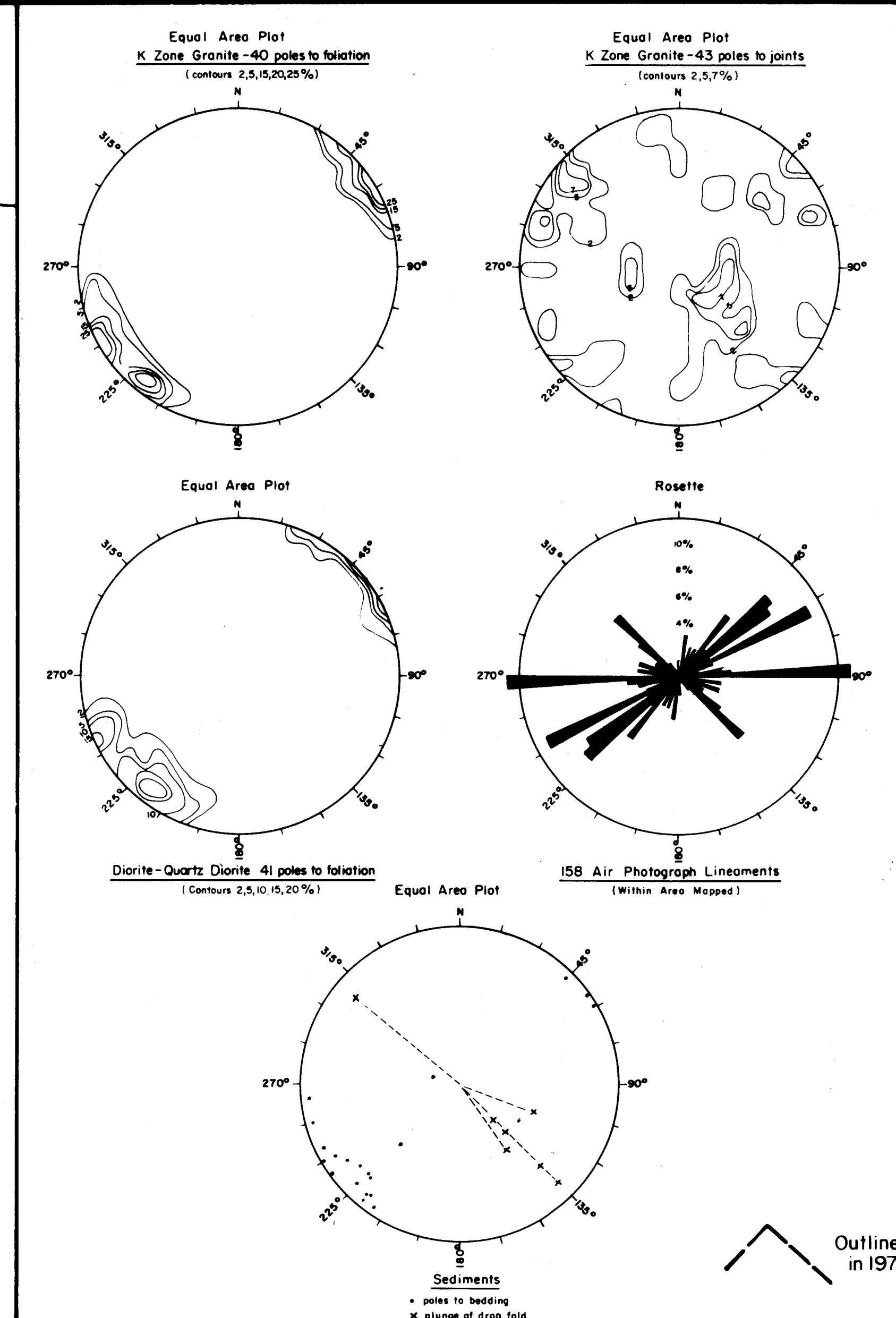
Legend

- Intrusives**
- 5 Kim Quartz Monzonite
 - 4 Diorite - Quartz Diorite
 - 3a Quartz Monzonite
 - 3b Granodiorite

- Sediments**
- 2 Mainly Crystalline Limestone to Thin Bedded Limestone
 - 1 Argillaceous and Arenaceous Shales, Black Shales, Greywackes, Minor Quartzites and Marls

Symbols

- Lineaments
- Geochemical, Geophysical Grid Baselines
- Strike and dip of foliation; vertical, dipping
- " " " bedding; " "
- " " " joints; " "
- Direction and plunge of drag folds
- Contact; Observed, Inferred
- Limit of Outcrop
- Survey grid lines

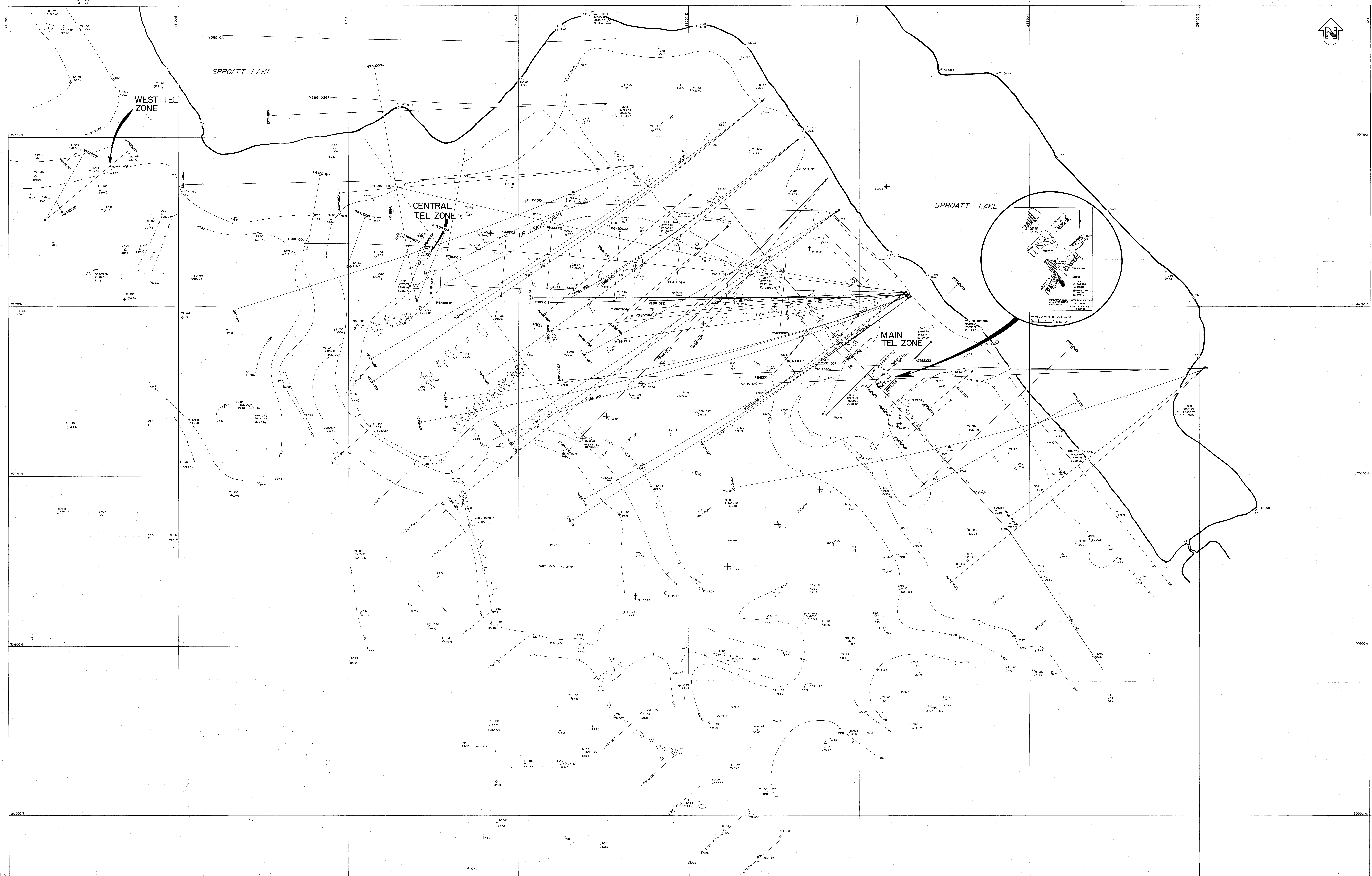


Outline of areas diamond drilled in 1976 (plotted on 1"=50')

GEOLOGICAL BRANCH
ASSESSMENT REPORT
15,759
PART 20F3

TRADER RESOURCE CORP.
VANCOUVER CANADA
PROPERTY GEOLOGY
PROJECT: YELLOW GIANT PROJECT
ENG.: TRM ENGINEERING LTD.
D.W.G. NUMBER: FIG. 5 REV.

Based on Mapping by B. Marchuk
Date: January 30, 1976



- LEGEND**
- SULFIDES
PYRITE, ARSENOPHITE, PHALLENITE
 - QUARTZ ALTERATION
 - ▨ QUARTZ MONZONITE
COARSE MEDIUM CRYSTALLINE BOTTY
QUARTZ MONZONITE
 - ▨ DIRTITE
COARSE CRYSTALLINE HORNBLENDE QUARTZ
DIRTITE AND DIRTITE
 - ▨ DIRTITE - FINE TO MEDIUM CRYSTALLINE
INTRUSIVE SILLS AND DYKES COMMONLY
ALTERED AND BOUNDED
 - ▨ LAMINATED BLACK ARGILLITE
THIN LAMINATED, ABUNDANT PYRITE
 - ▨ CALCAREOUS ARGILLITE AND
ARGILLACEOUS MARBLE
 - ▨ BANDED GREY MARBLE
MEDIUM TO COARSE CRYSTALLINE, COMMONLY
LAYERED BY THIN DARK GREY BANDS
 - ▨ DARK GREY SLTSTONE
 - ▨ SILTY THIN BEDED MARBLE
ALTERNATED SILTY AND CALCAREOUS LAYERS
 - ▨ SILTSTONE - FINE BEDDED
COMMONLY FRACTURED AND OFTEN HORNFELDED
 - ▨ BEDDING STRIKE AND DIP
BEDDING VERTICAL DIP
 - ▨ JOINT/FRACTURE ORIENTATION, STRIKE
AND DIP
 - ▨ OUTLINE OF OUTCROP
 - ▨ CHANGING HOLE NUMBER, COLLAR AND DIRECTION
OF HOLE, HOLE NUMBER AT END OF HOLE
 - ▨ NUMBERED SURVEY HOLE
COORDINATES OF PROPERTY GRID
IN METERS
 - ▨ ELEVATION ABOVE SEA LEVEL,
ZERO COORDINATES AT HELPER IN HELPER LAKE
CAMP
 - ▨ SURVEY PICK UP, TRANSIT AND ERM
 - ▨ SKID TRAIL
 - ▨ PROPERTY GRID LINE
 - ▨ PY - PYRITE
SPH - SPHALERITE
ASPH - ARSENOPHITE
 - ▨ FAULT OBSERVED, OR PROBABLE
ASSUMED FAULT
 - ▨ TRENCH OR PIT
 - ▨ GEOLOGICAL CONTACT ASSUMED

DETAIL GEOLOGY BY
J.T. SIEGHER AND A. FREZZI
JUNE 1986

SURVEY CONTROL FROM MP ELHANNEY
AND ASSOCIATES FOR METRIC GRID BY A.R. BURTON
USING TRANSIT AND E.D.M. - JUNE 1985

SCALE 1:250
0 50 100 150 200 M

TRADER RESOURCE CORP
TEL DEPOSIT
BANKS ISLAND
DETAIL SURFACE GEOLOGY

ENG	TRM ENGINEERS LTD.
DATE: JUNE 1986	P. 3013 A PLANN PRF
	H.A. SIMONS LTD.



15,759
PART 2 OF 3
ASSESSMENT REPORT
GEOLOGICAL BRANCH

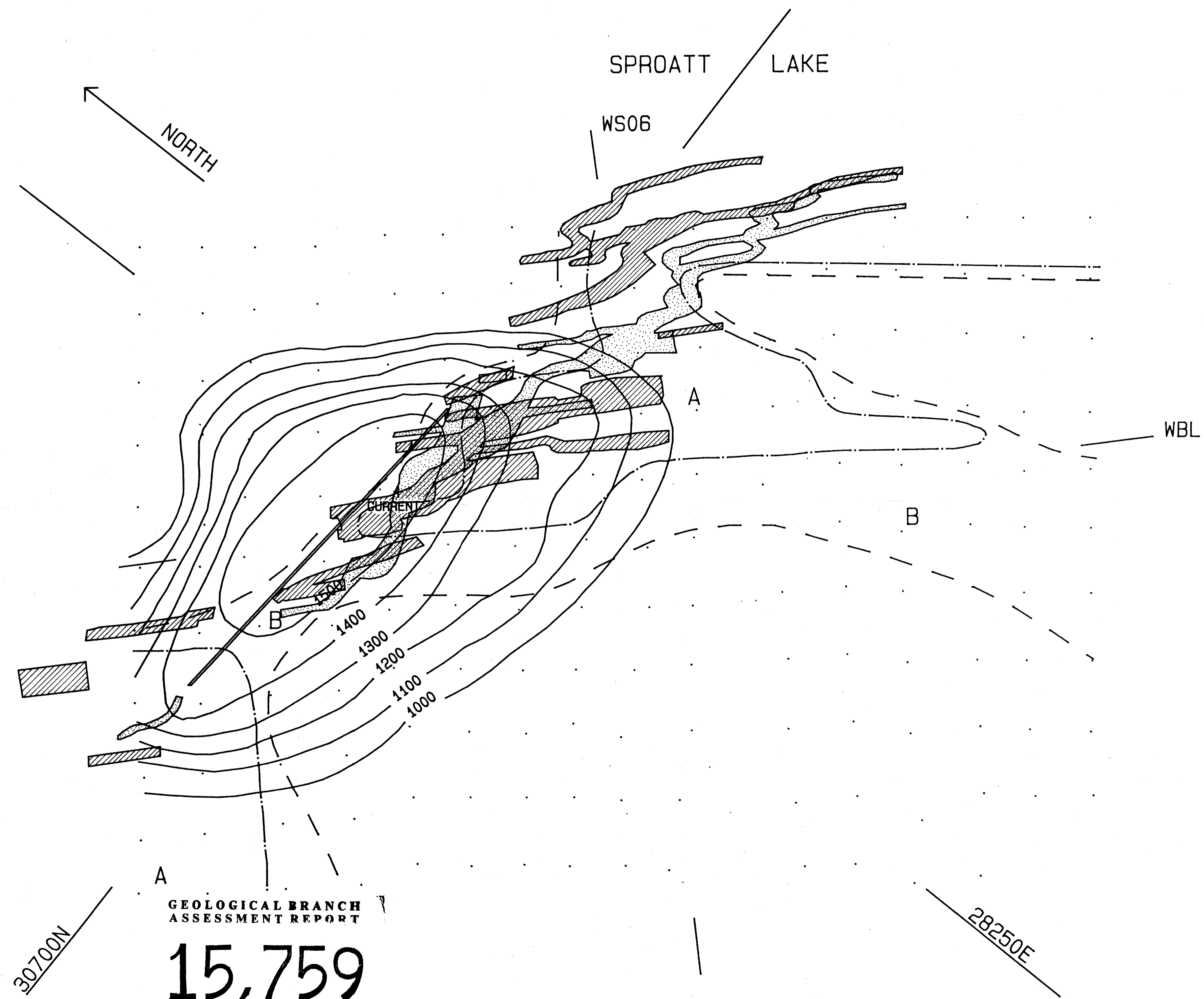
- LEGEND**
- SLALICES
PYRITE, ANKERITE, SPHALERITE
 - QUARTZ ALTERATION
 - QUARTZ MONOZONITE
CONTAINING SPHERULINE BOTTLE
QUARTZ MONOZONITE
 - QUARTZ
CONTAINING SPHERULINE MONOZONITE
QUARTZ MONOZONITE
 - QUARTZ
CONTAINING SPHERULINE MONOZONITE
MONOZONITE
 - LAMINATED BLACK ARGILLITE
THIN LAMINATED, IRREGULAR PLATE
 - CALCAREOUS ARGILLITE AND
ARGILLACEOUS MUDSTONE
 - SANDY GREY MARBLE
CONTAINING SPHERULINE MONOZONITE,
COMMONLY LAMINATED, IRREGULAR PLATE
 - DARK GREY SLTSTONE
 - SILTY THIN BEDDED MARBLE
ALTERED TO SILTY AND CALCAREOUS LAYERS
 - SLTSTONE - Thin beds
COMMONLY FRAGILE AND OFTEN HONEYCOMBED
 - BEDDING STRIKE AND DIP
 - BEDDING VERTICAL DIP
 - JOINT/FRACTURE ORIENTATION, STRIKE
AND DIP
 - OUTLINE OF OUTCROP
 - DRAINAGE HOLES, COLLARS AND DIRECTION
OF FLOW, HOLE NUMBER AT END OF HOLE
 - TRENCH
 - ELEVATION ABOVE SEA LEVEL
ZONE COORDINATES AT HELICOPTER LANDING
ZONE
 - SURVEY PICK UP TRAIL AND EDGE
 - SAND TRAIL
 - PROPERTY BOUNDARY LINE
 - PYRITE
 - SPHALERITE
 - ANKERITE
 - FRACTURE UNDEVELOPED OR PROBABLE
ASSUMED PLANE
 - TRENCH OR PIT
 - GEOLOGICAL CONTACT ASSUMED
- DETAIL COLLECTED BY
J. S. GILLESPIE AND A. FREEZE
JUNE 1987
- SURVEY CONTROL FROM W. EDWARDS
AND ASSOCIATES SANITARY AND
ENGINEERING LTD. BY R. A. BAYLON
UNDER LICENSE AND I.P. 1000

SCALE 1:500
0 5 10 15 20m

TRADER RESOURCE CORP
TEL DEPOSIT
BANKS ISLAND
DETAIL SURFACE GEOLOGY

ENG. TRM ENGINEERING LTD.
DATE: JUNE 8/88 P. 2013 A PLANNING
R.A. SIMONS LTD.

Fig. 6b



TRADER RESOURCE CORP.
Tel Property,
Banks Island, B.C.

E-SCAN SURVEYS
June 1986

SUMMARY E-SCAN RESULTS
shown over drilling
results as at June 1986

MISE A LA MASSE SURVEY
Axis of deep conductor

INDUCED POLARIZATION
ANOMALY OUTLINES:
A: surface to elev. -30 metres
B: deeper than elev. -30 metres

DRILL-INDICATED ORE ZONES
PROJECTED TO SURFACE:
surface to elev. -30 metres
elev. -50 to -170 metres

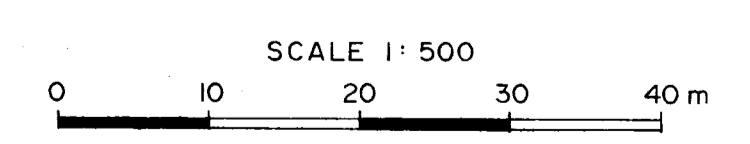
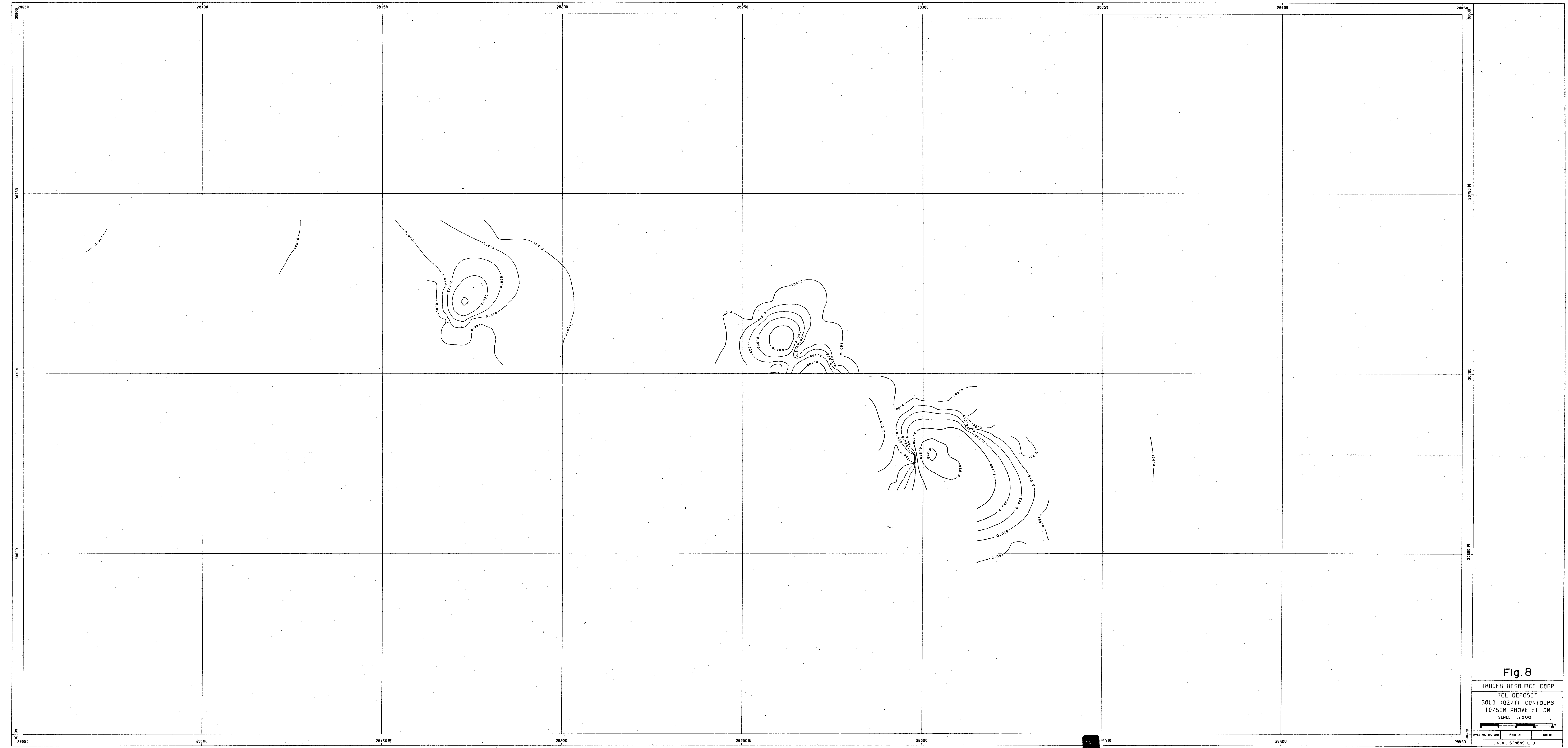


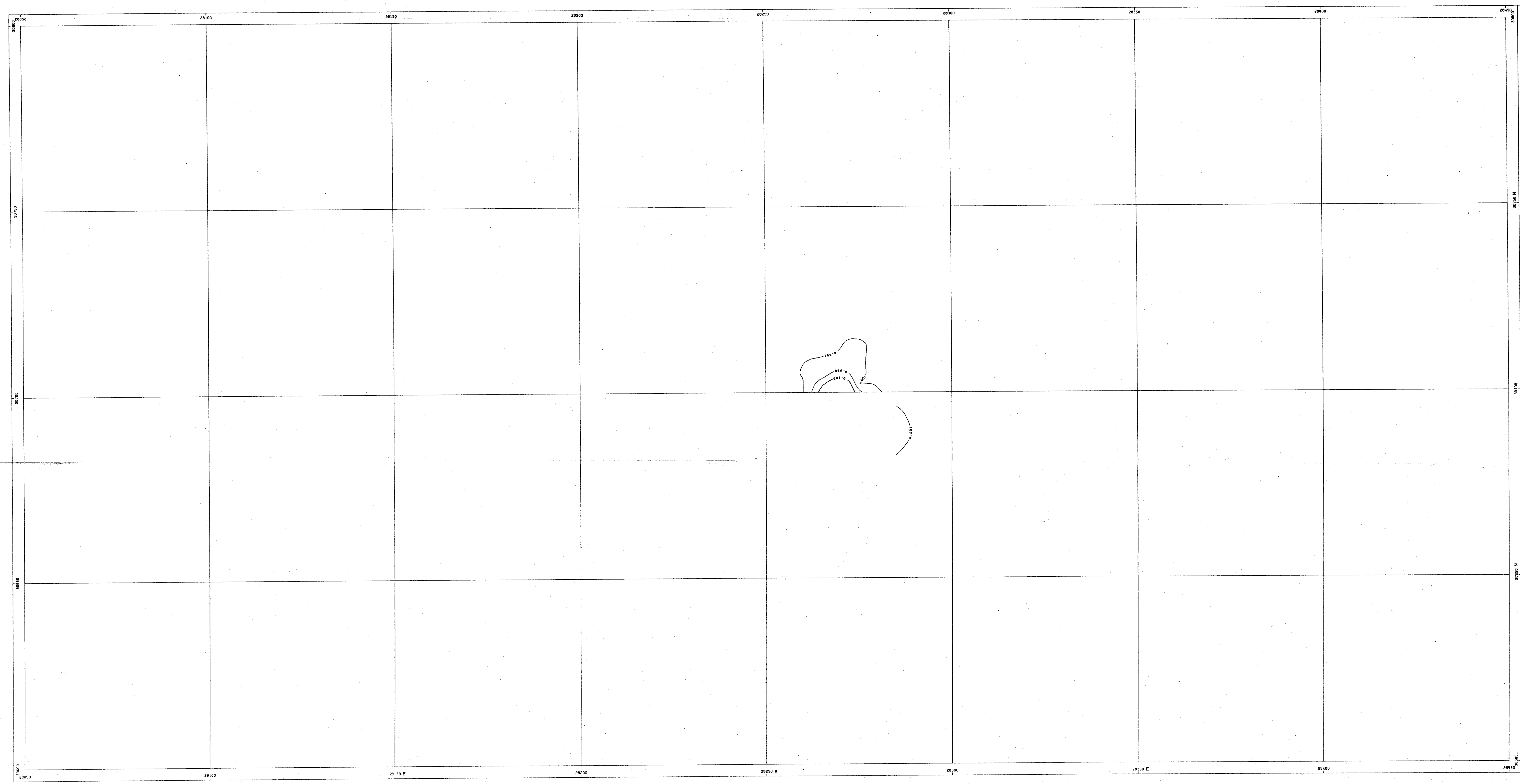
Figure # 7

30700N
A
GEOLOGICAL BRANCH
ASSESSMENT REPORT
15,759
PART 2 OF 3



15,759
GEOLOGICAL BRANCH
ASSESSMENT REPORT
PART 2 OF 3

Fig. 8
TRADER RESOURCE CORP
TEL DEPOSIT
GOLD (OZ/T) CONTOURS
10/50M ABOVE EL. 0M
SCALE 1:5000
H.W. SIMONS LTD.



15,759
GEOLOGICAL BRANCH
ASSESSMENT REPORT
PART 2 OF 3

Fig. 9
TRADER RESOURCE CORP
TEL DEPOSIT
SILVER (OZ/TON) CONTOURS
10/50M ABOVE DM EL
SCALE 1:500
H.R. SIMONS LTD.

15,759
PART 2 OF 8

GEOLOGICAL BRANCH
ASSESSMENT REPORT

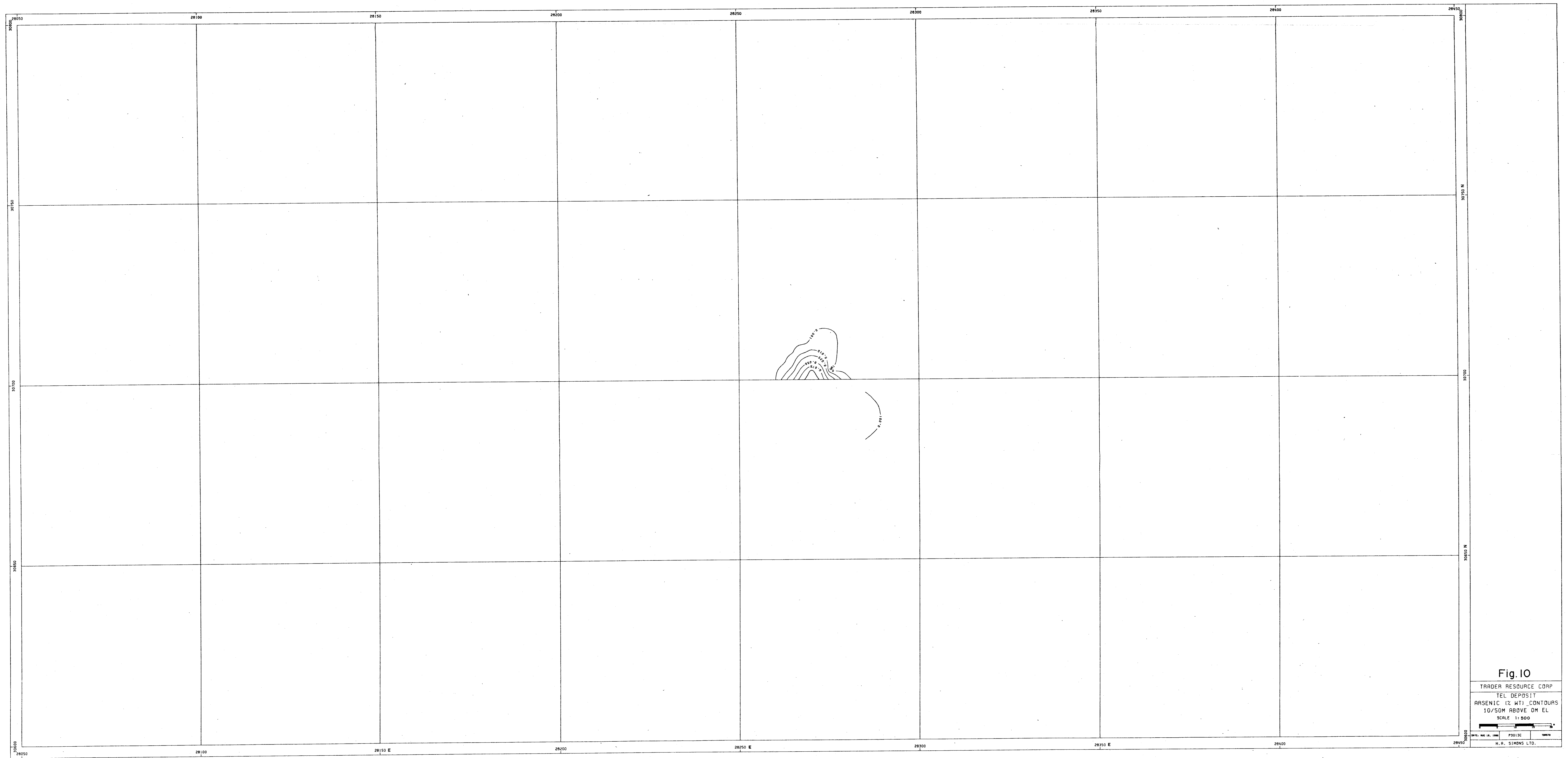


Fig. 10
TRADER RESOURCE CORP
TEL DEPOSIT
ARSENIC 12, 411, 10/50M ABOVE OM EL
SCALE 1:500
H. R. SIMONS LTD.

15,759
PART 2 OF 8

15,759
PART 2 OF 3

GEOLOGICAL BRANCH
ASSESSMENT REPORT

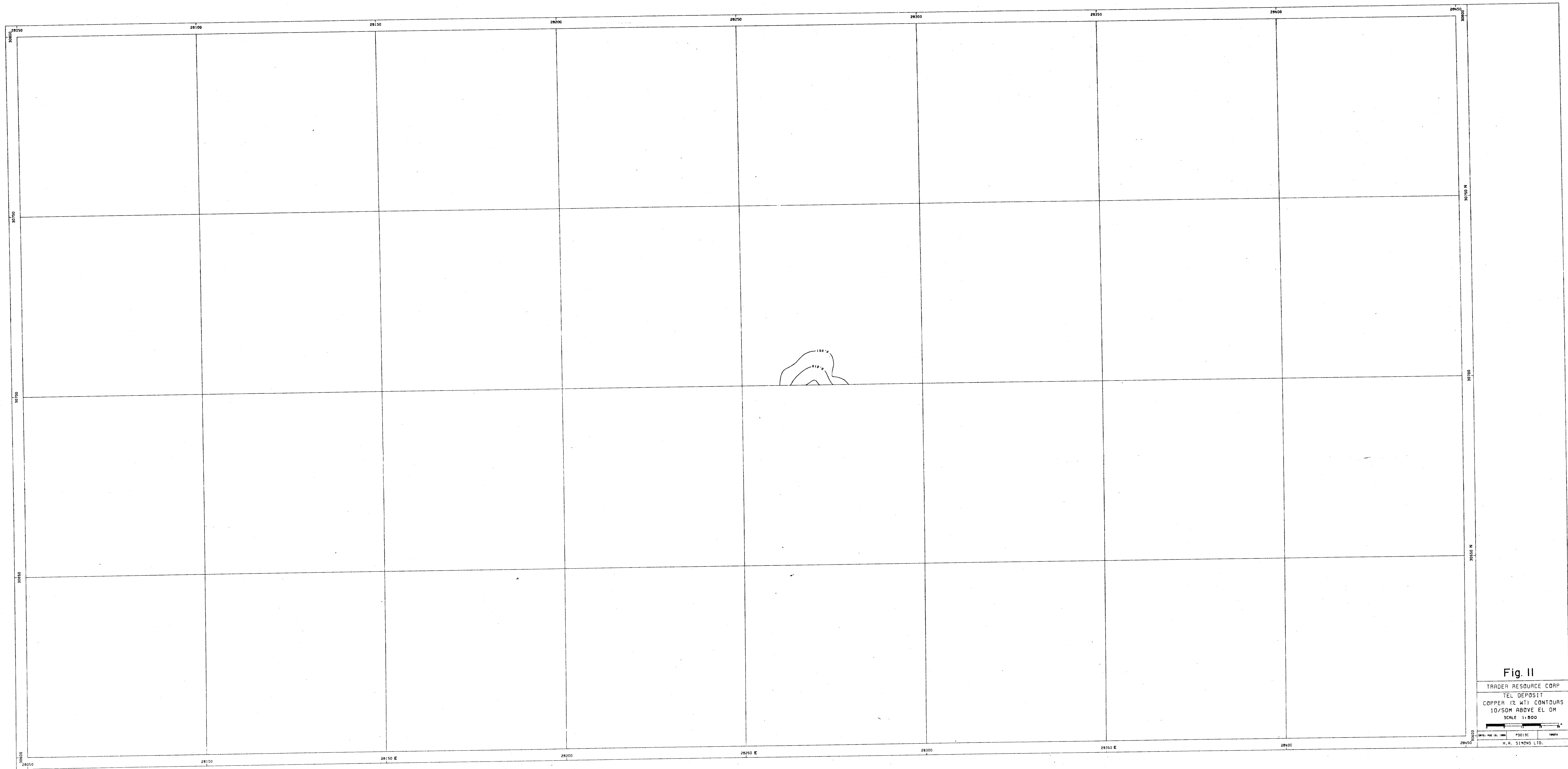


FIG. II: COPPER (Cu) CONTOURS 10/50M ABOVE EL. OM

Fig. II
TRADER RESOURCE CORP
TEL. DEPOSIT
COPPER (Cu) CONTOURS
10/50M ABOVE EL. OM
SCALE 1:500

PROJ. H. H. SIMONS LTD.

15,759
GEOLOGICAL BRANCH
ASSESSMENT REPORT
PART 2 OF 3

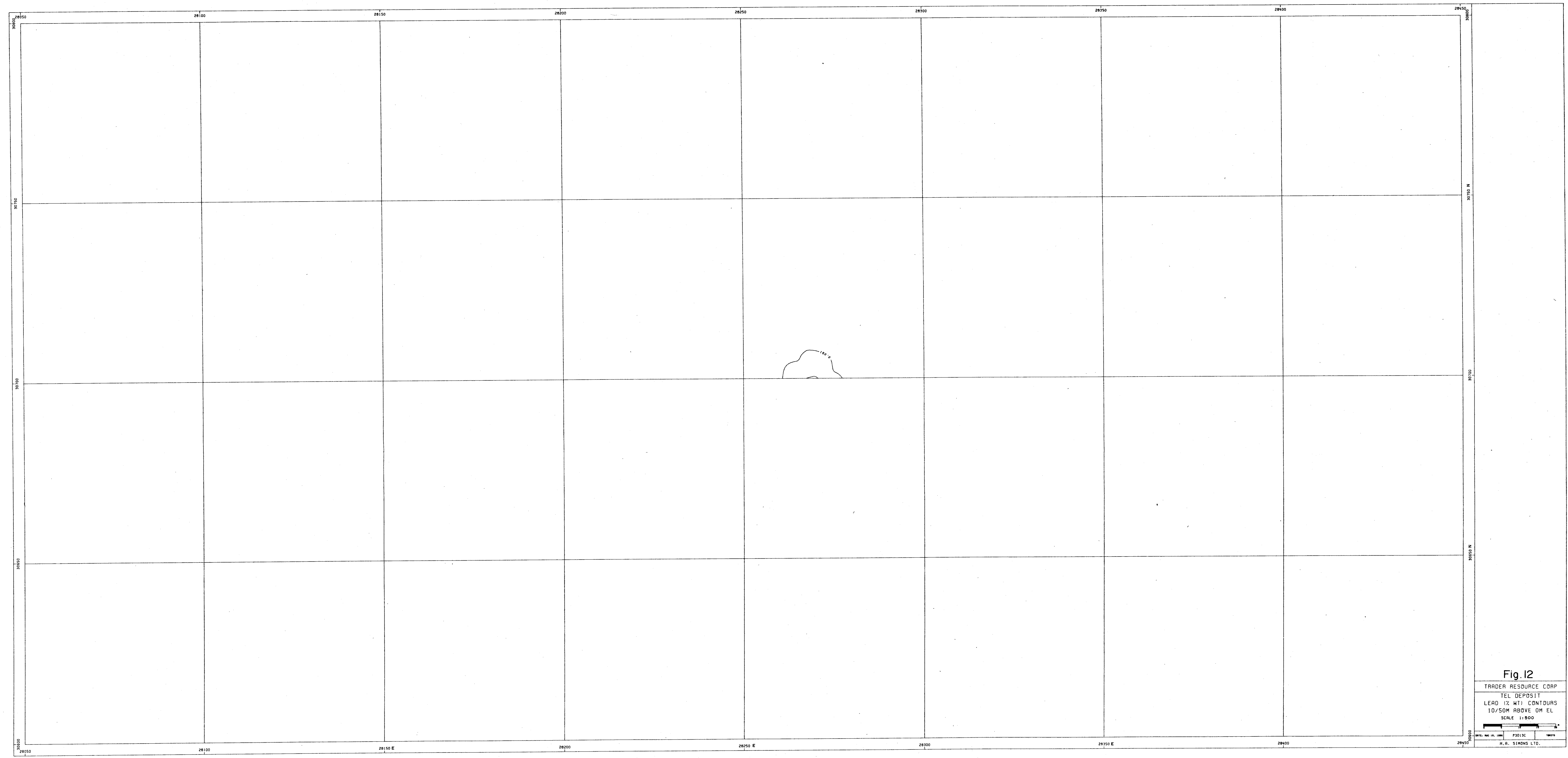


FIG. 12
LEAD 1% AT 100 METERS
10/50M ABOVE DM EL
SCALE 1:500

15,759
GEOLOGICAL BRANCH
ASSESSMENT REPORT
PART 20F3

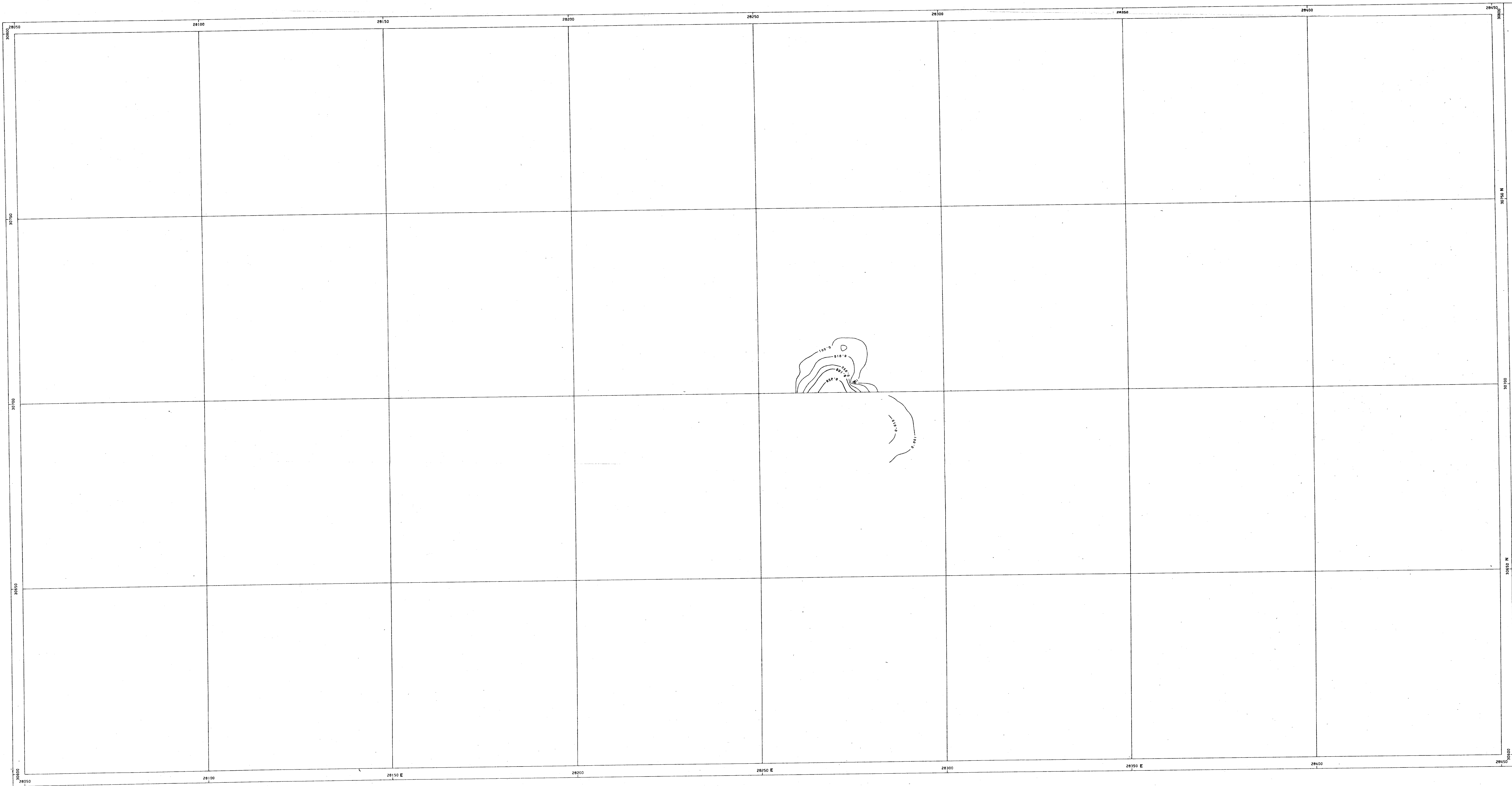
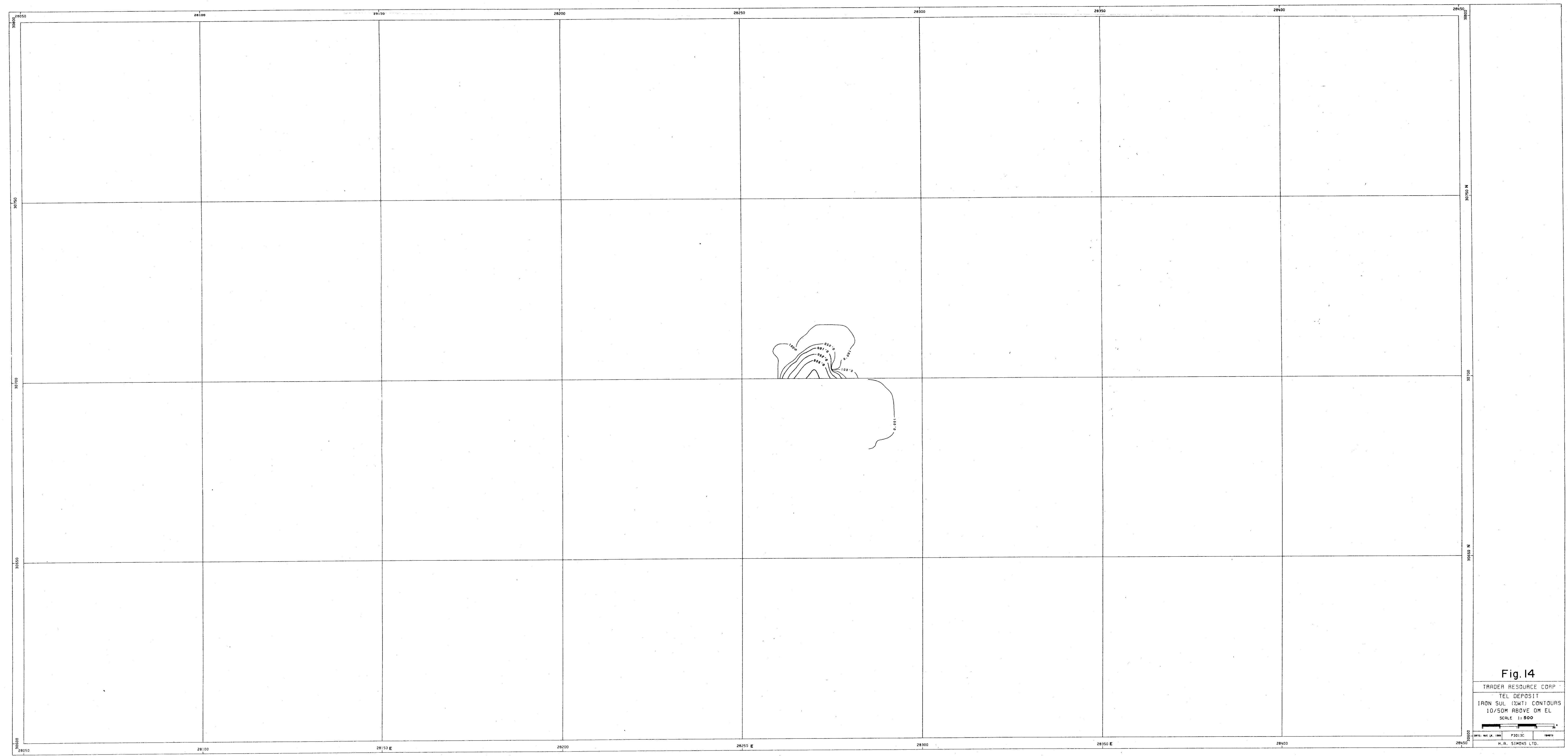


Fig. 13
TRADER RESOURCE CDRP
TEL DEPOSIT
ZINC 12.4% CONTOURS
10/50M ABOVE DM EL
SCALE 1:500
H. R. SIMONS LTD.

15,759
GEOLOGICAL BRANCH
ASSESSMENT REPORT
PART 20F3

15,759
PART 2 OF 3

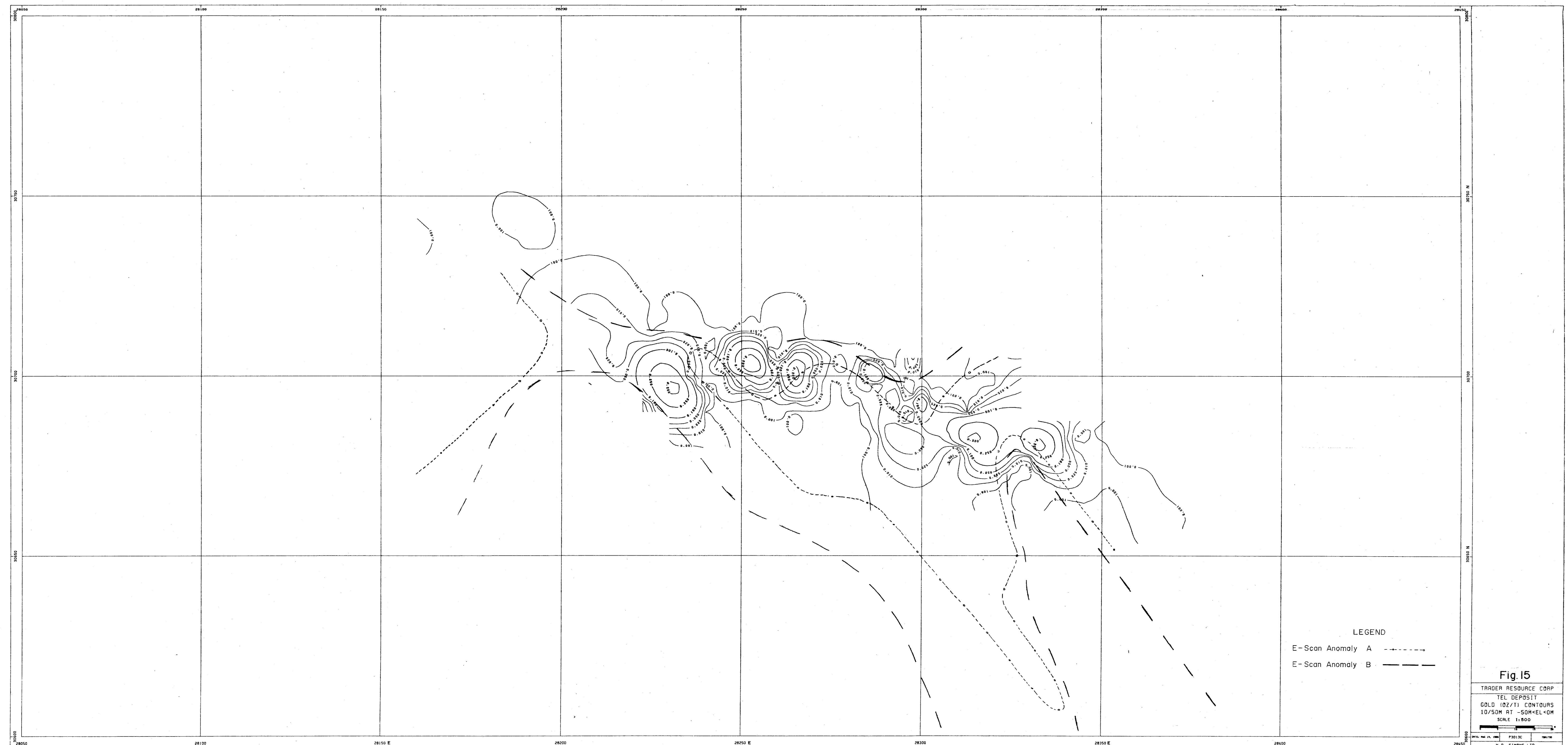
ASSESSMENT REPORT
GEOLOGICAL BRANCH



DATE: 15/08/00
BY: [illegible]
CHECKED BY: [illegible]
SCALE: 1:500

15,759
PART 2 OF 3

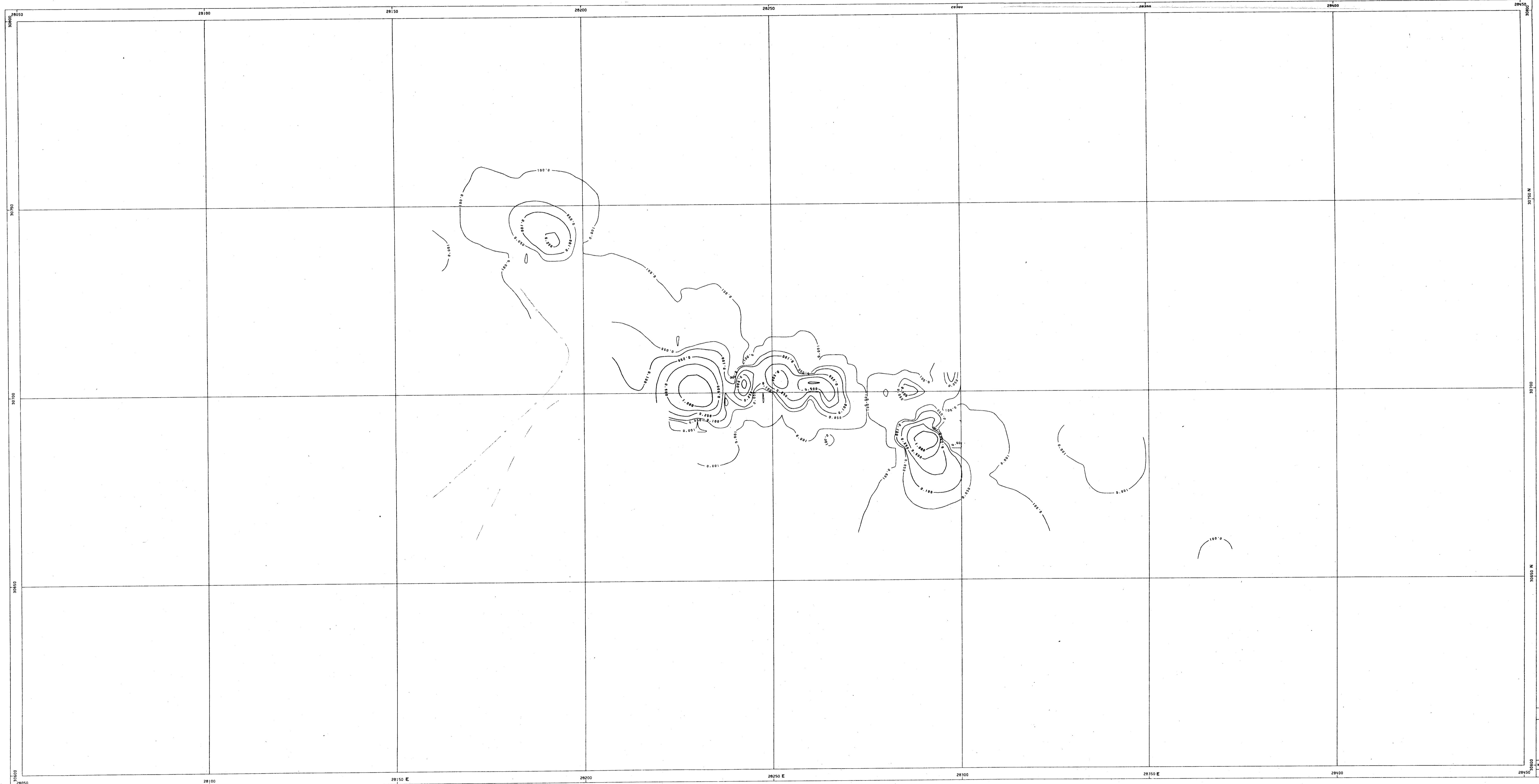
GEOLOGICAL BRANCH
ASSESSMENT REPORT



15,759
PART 2 OF 3

15,759
PART 2 OF 3

GEOLOGICAL BRANCH
ASSESSMENT REPORT



15,759
PART 2 OF 3

Fig. 16
TRADER RESOURCE CORP
TEL DEPOSIT
SILVER (OZ/TON) CONTOURS
10/50M AT 50M-EL-DM
SCALE 1:500
N. R. SIMONS LTD.

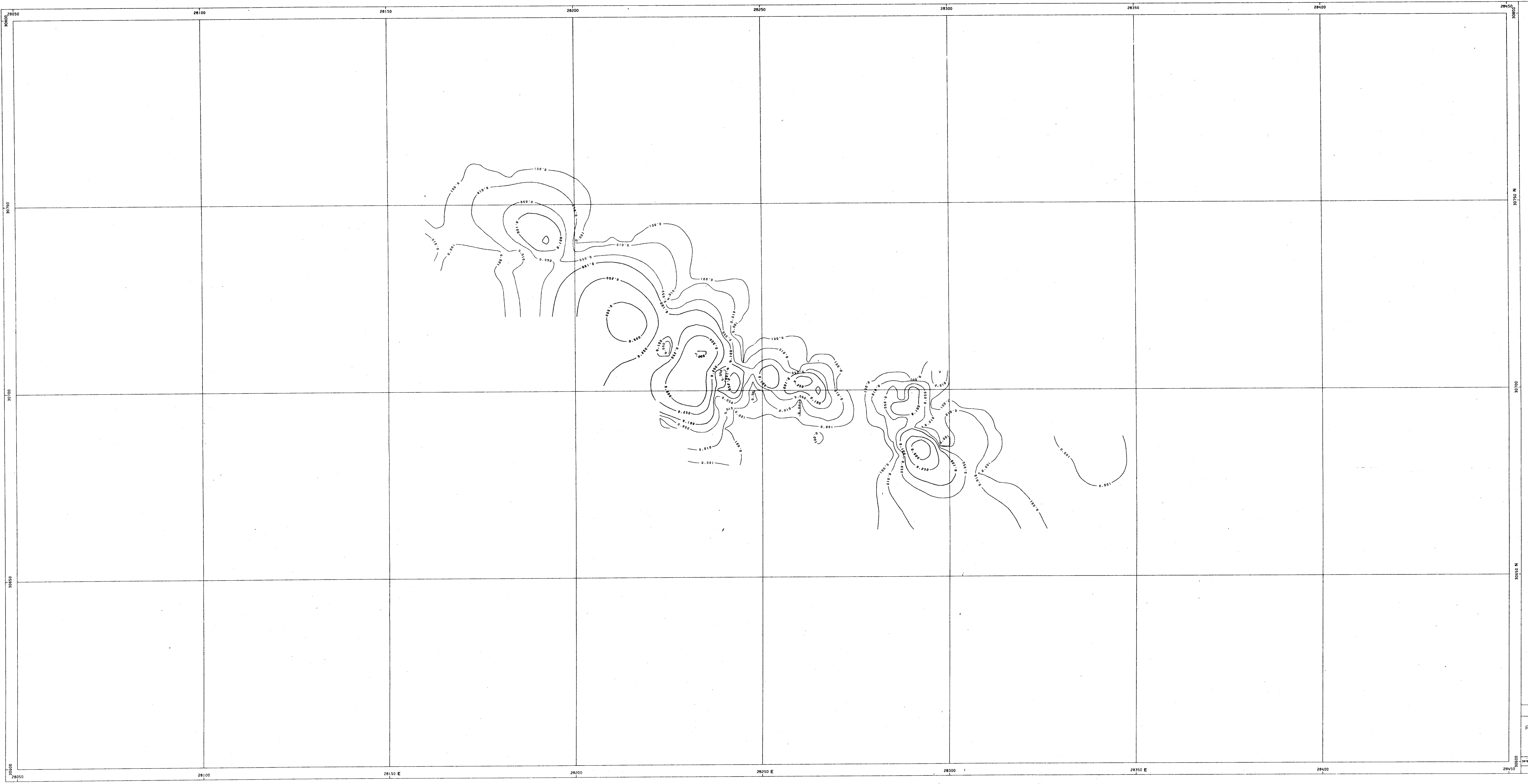


FIG. 17
ARSENIC (X) WT% CONTOURS
10/50M AT -50M ELEVATION
SCALE 1:500

Fig. 17
TRADER RESOURCE CORP
TEL DEPOSIT
ARSENIC (X) WT% CONTOURS
10/50M AT -50M ELEVATION
SCALE 1:500
H.A. SIMONS LTD.

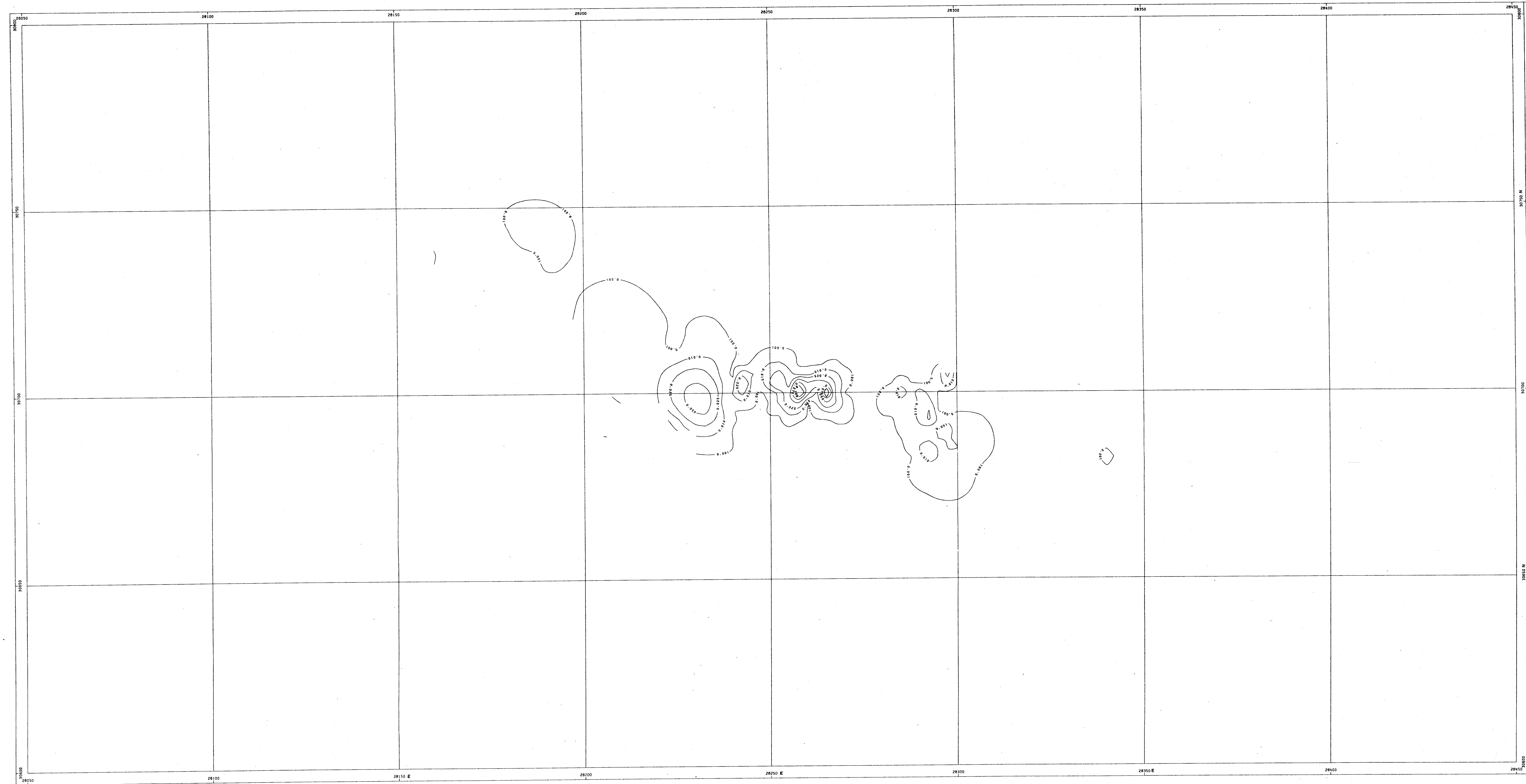
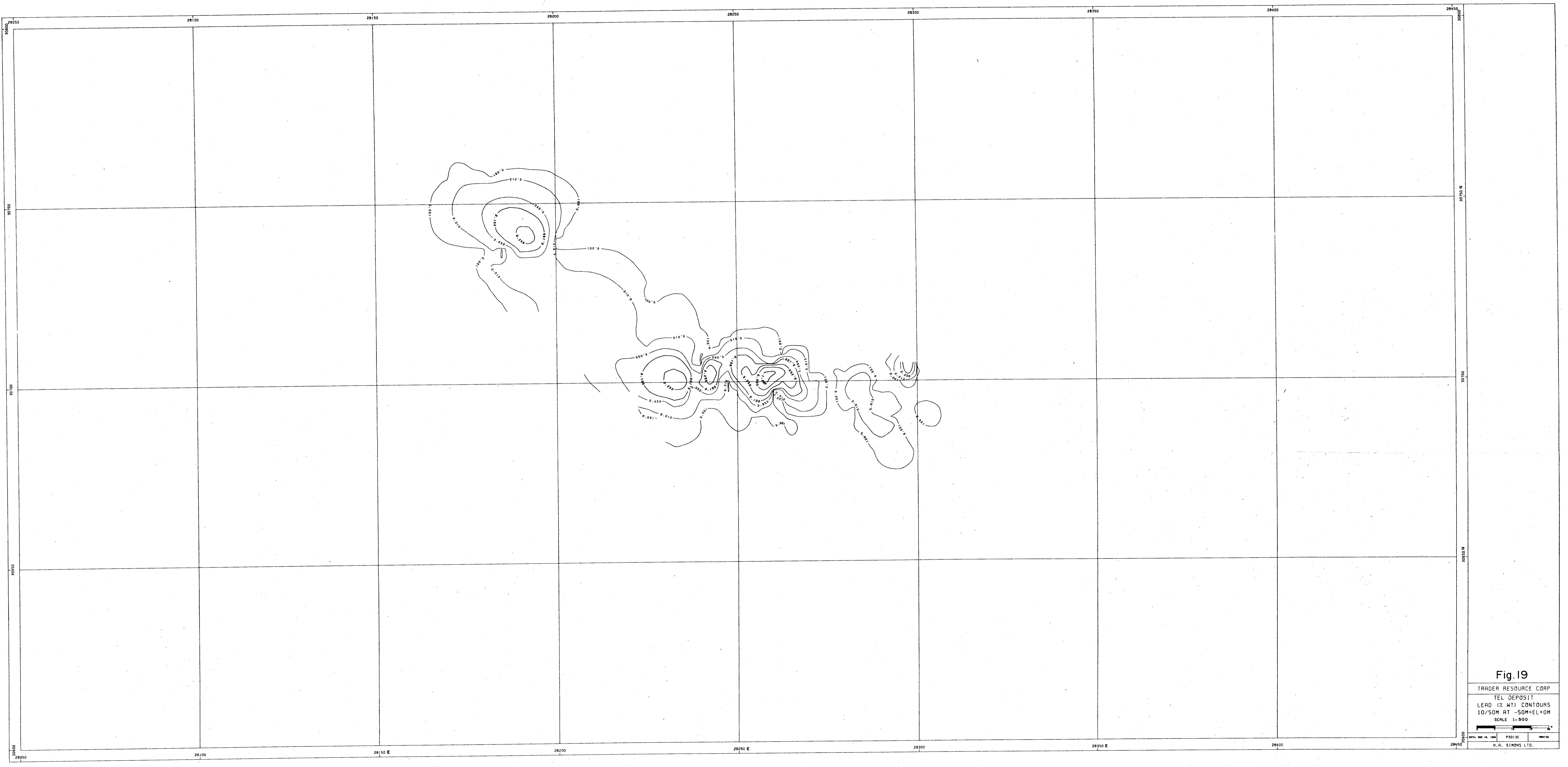


FIG. 18
COPPER AND NICKEL
CONTOUR MAP
SCALE 1:500

Fig. 18
TRADER RESOURCE CORP
TEL DEPOSIT
COPPER & NICKEL
CONTOURS
10/50M AT 50M ELEVATION
SCALE 1:500

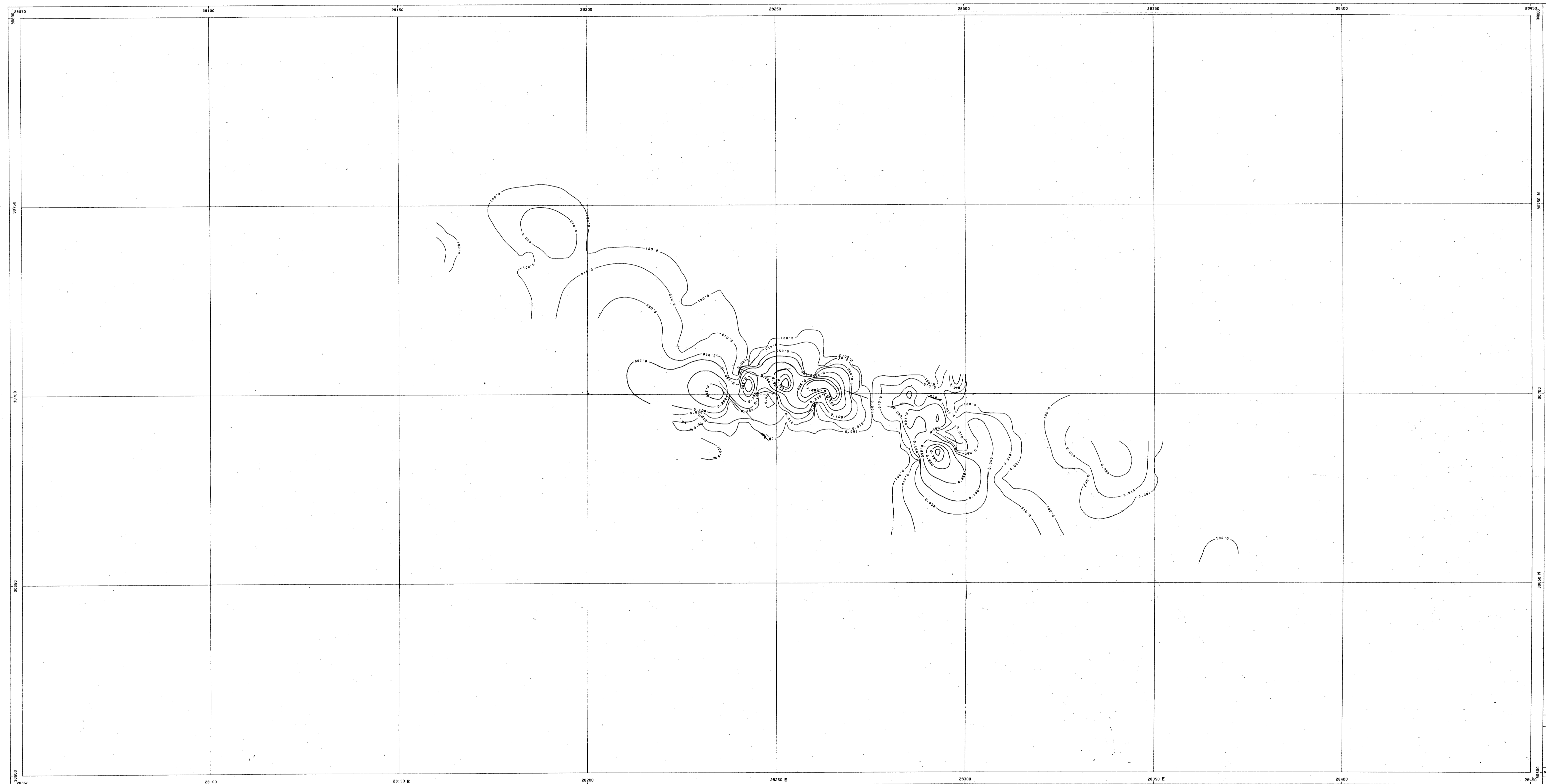
15,759
PART 2 OF 3
GEOLOGICAL BRANCH
ASSESSMENT REPORT



15,759
PART 2 OF 3
GEOLOGICAL BRANCH
ASSESSMENT REPORT

Fig. 19
TRADER RESOURCE CORP
TEL DEPOSIT
LEAD (% WT) CONTOURS
10/50M AT 50M-EL+0M
SCALE 1:200
H.R. SIMONS LTD.

15,759
PART 2 OF 3
GEOLOGICAL BRANCH
ASSESSMENT REPORT

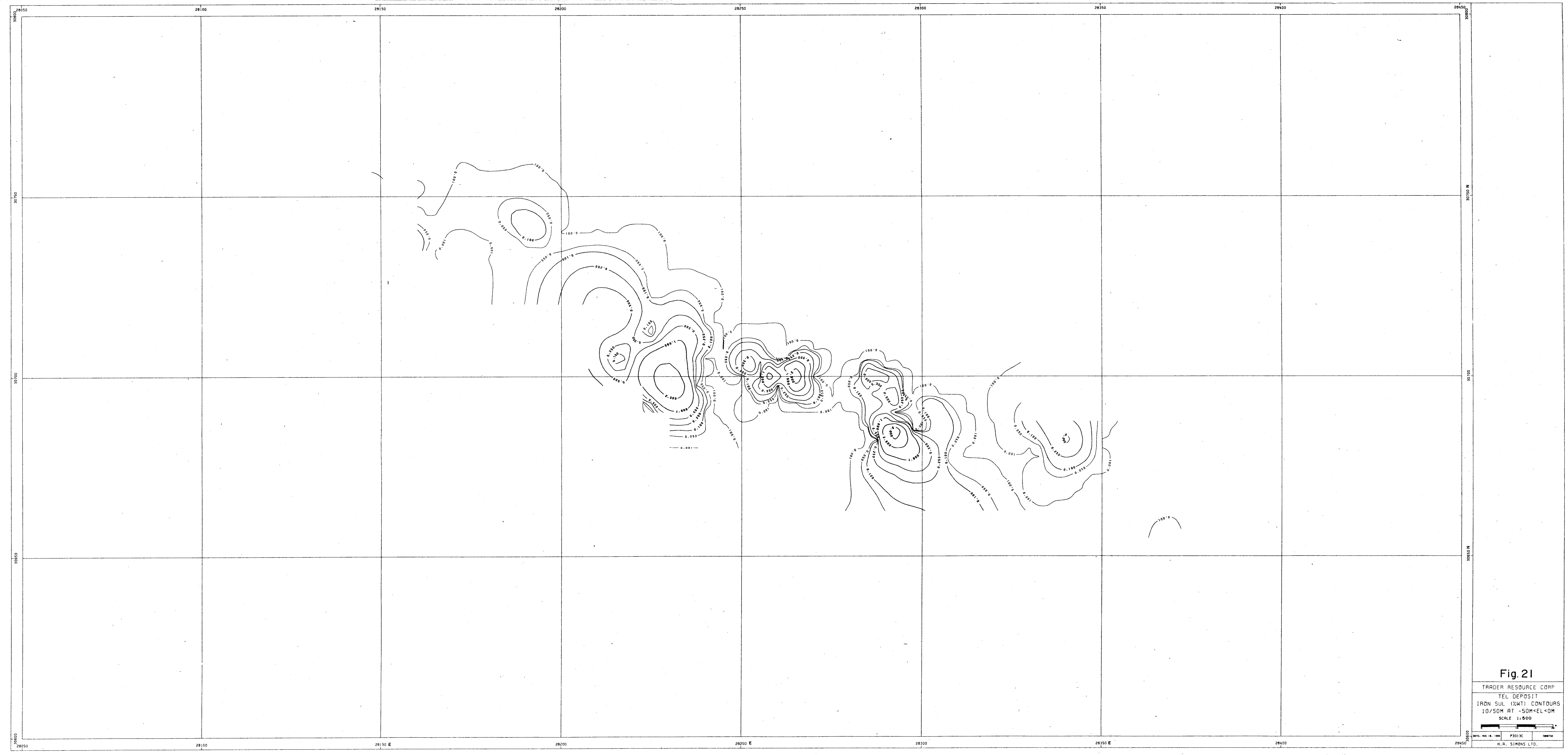


UNIT: METERS
 1:500
 1:1000
 1:2000
 1:5000
 1:10000

Fig 20
 TRADER RESOURCE CORP
 FEL DEPOSIT
 ZINC (Z) WIT CONTOURS
 10/SOM AT -50M<EL<OM
 SCALE 1:500

15,759
PART 2 OF 3

GEOLOGICAL BRANCH
ASSESSMENT REPORT



15,759
PART 2 OF 3

Fig. 21
TRADER RESOURCE CORP
TEL DEPOSIT
IRON SUL (XMT) CONTOURS
10/SOM AT -50M<EL<0M
SCALE 1:500
H. R. SIMONS LTD.