

TABLE OF CONTENTS

	Page.
Summary	1
Property location map, Fig. 1	2
Access map Fig. 2	3
Claim map. Fig. 3.	4
Prospecting notes.	5
Drill hole location map. Fig. 4.	12
Analytical certificates.	13
Cost statement.	15

Summary.

GEOLOGY: From Map of 46R Lardeau West Half Grey to Black Phyllite, Argillite, Quartzite Minor Tuffaceous Sediments near top.

CORE STORAGE: Storage and work shop building located Boulder Trailer Park, Lot 1 of 397, Nakusp, B. C.

DRILLING HOLE NO. 1: No visible mineral, corrected to 21.95 m.
X Ray Drill Bit number Type XRPS.



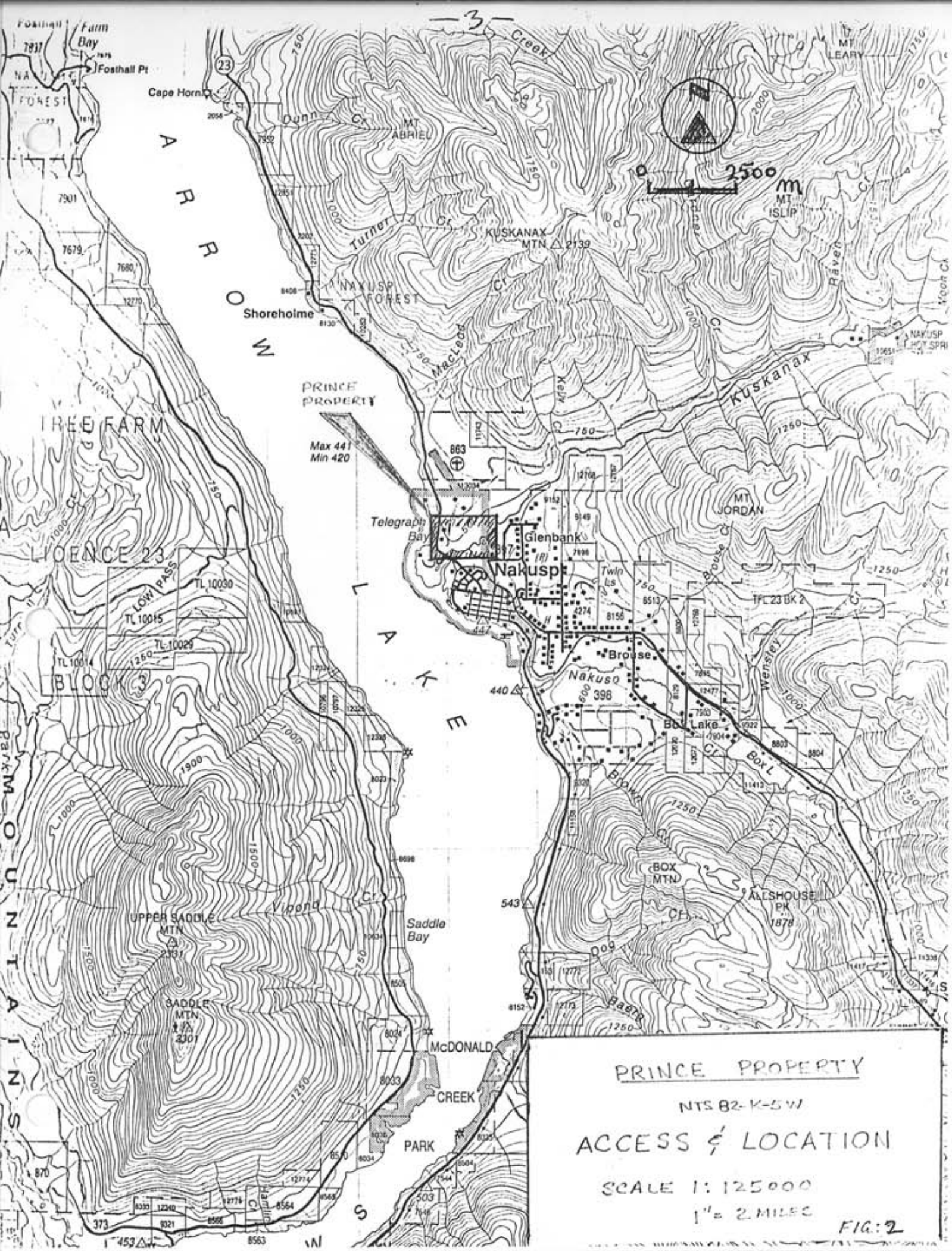
F.M.C. 272982



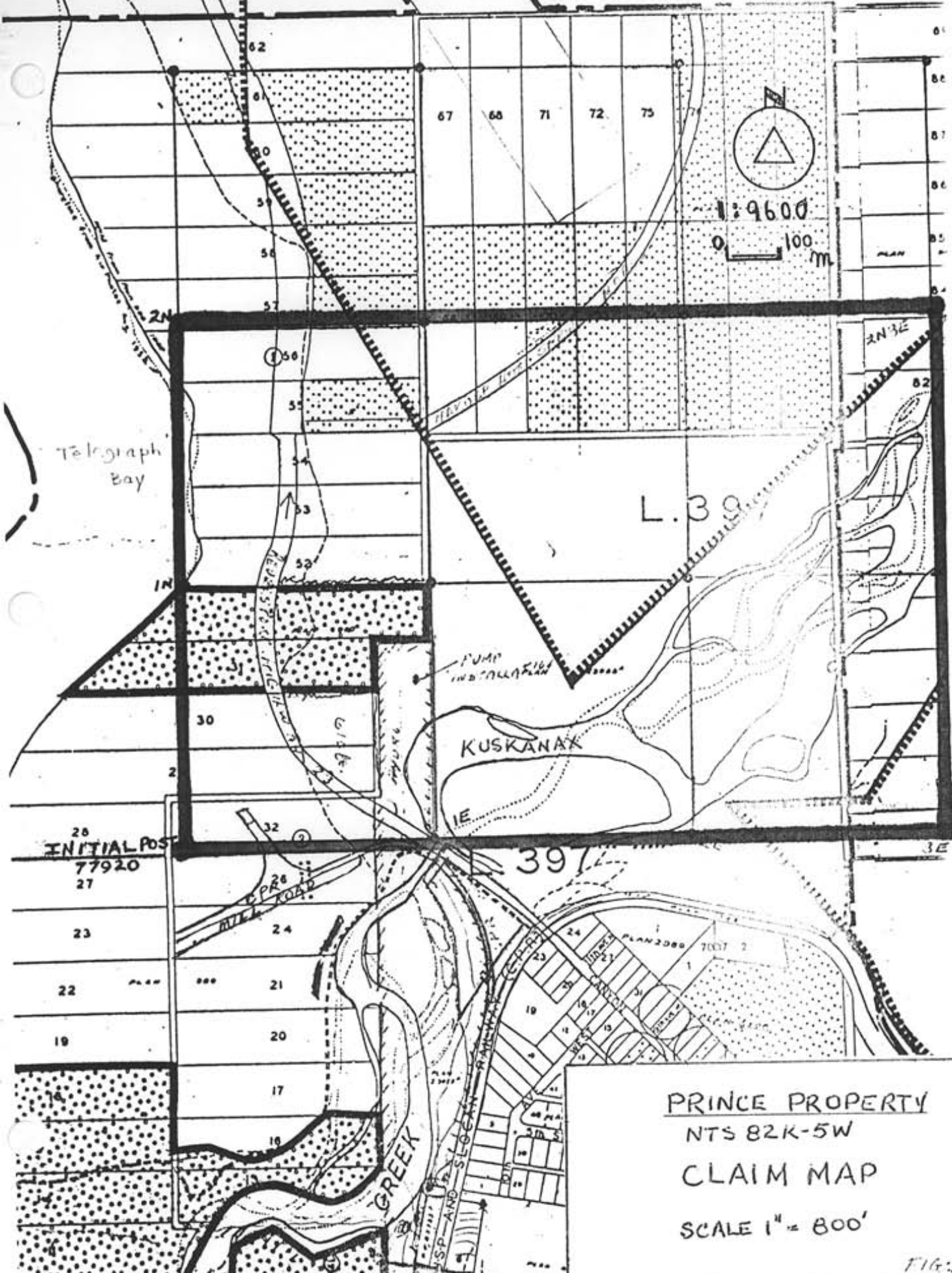
PRINCE PROPERTY
 NTS B2K-5W
PROPERTY LOCATION MAP

0 100 200 300 MILES
 0 100 200 300 KILOMETRES

FIG. 1



PRINCE PROPERTY
 NTS 82-K-5W
 ACCESS & LOCATION
 SCALE 1:125000
 1" = 2 MILES
 FIG: 2



26 INITIAL POST
77920
27

PRINCE PROPERTY
 NTS 82K-5W
 CLAIM MAP
 SCALE 1" = 800'

FIG. 3

M.C. PRINCE
NAKUSP, BC.
14/12/85
15/12/85

H. WILSON P. ENG.

- BIRDY'S YELLOW FLAG CODE
- CHAIN & ARROW IN METRES
- TIN TAG POST YELLOW & PINK TAGS
- DUE 2240

WINDS
TEMP - C
TIME YAM.

POC. JUTAL POST
No. 77920.

J.L. DARRINGTON
TACOMA WASH. U.S.A.

Retina 24 Series
WEATHERPROOF

No. 312

BRC.	SD.	0/0.	H.D.	POST
NORTH.	394 ⁹	± 1.5	394 ⁹	
	105 ¹	←	105 ¹	
	TOTAL		500 m	IN

	OFFSET	± 394 ⁹	DOE EAST	
EAST	100 ¹	+10	101 ²	
NORTH	117 ⁶	←	117 ⁶	
	184	←	184	
	191 ⁸	+3	191 ⁸	
	230 ⁵	± 2.5	230 ⁵	
CONTINUOUS	310 ¹	+6	310 ¹	
	320 ²	+8	320 ²	
	473 ¹	+6	473 ¹	
	625 ²	+13	627 ¹	
	655	+6	655	
WEST	101 ²	-23	103 ²	
South.	7 ²	-27	9 ²	2N
South.	36 ³	-17	36 ³	

NOTES

PAGE 2 of 7

- ① 226⁹ SMALL NUB.
- ① 394⁹ WATER EDGE COLUMBIA RIVER
- ① 500 - IN POST IN DEEP WATER, NO TAKING POSSIBLE.

- ① 117⁶ WATER EDGE COLUMBIA RIVER
- ① 184 WATER EDGE CROSSING.
- ① 191⁸ FRONT OF RED HOME
- ① 230⁵ FRONT OF HOME BY 2.5 m.
- ① 310¹ BEHIND LOG-HOUSE BY 13.2 m.
- ① 320² BELOW (WEST) OLD LOG CABIN 1/2 BUILT
- ① 473¹ UNDER 20m CLIFF
- ① 627¹ EAST 22m HOME & HANGAR SHOP.
- ① 655 ON DRIVEWAY ROAD.

- REF TIE 2N TO N.W. Δ CONCRETE FOUNDATION
- TIN HANGAR 530E 22E m.
- 2N TIN TAKING 14" FIR CLOSE TO RUNNERS
- YELLOW ± P.W. ± FALLING.
- ① 36³ VERTICAL DROP TO COLUMBIA RIVER.

J.C. HARKINS & COMPANY
TACOMA, WASH. U.S.A.

Kleinman & Associates
WASHINGTON

N. 31/10

BRG.	SD.	c/o	H.D.	Post.
NORTH.	56 ⁴	± 12	56 ⁴	
	128 ³	± 3	128 ³	
CONTINUOUS	202 ⁸	- 3.5	202 ⁸	
	329 ³	- 7.5	329 ³	
	395 ⁹	0	395 ⁹	
	500	0	500	3N

EAST.	136 ⁶	+ 11	136 ⁶	
CONTINUOUS	154 ²	+ 9	154 ²	
	186 ⁷	+ 5	186 ⁷	
	500	+ 10	500	3N1E

EAST	204 ⁴	+ 7	204 ⁴	
CONTINUOUS	325 ⁵	0	325 ⁵	
	353 ²	+ 9	353 ²	
	500	0	500	3N2E

NOTES	PAGE 3 of 7
C 56 ⁴ TOP OF ROAD BLUFF.	
C 128 ³ 4'x8' BROWN POWER HOUSE.	
C 202 ⁸ c/o ROAD CROSSING.	
C 329 ³ c/o POWER LINES - WEST HOME BAR	
C 395 ⁹ c/o ADJUSE ROAD CROSSING SWITZER	
C 500 3N1E TAGGING 4" CEDAR SURROUND	

BY 14" LARKIN FIR - BELOW OLD ROAD BED. YELLOW

& PINK FALGOUT.

C 136⁶ I.P.R. 61 & 62 WEST OF MAIN HWY #23

C 154² c/o MAIN HWY #23

C 186⁷ I.P.R. 61 & 62 EAST OF MAIN HWY #23

C 500 I.P.R. 61 & 62 ALSO 3N1E POST

ON 10" WHITE RING. YELLOW & PINK FALGOUT.

C 500 EDGE OF TIMBER & CLEARING ALDER

C 204⁴ c/o AIR STRIP PAVEMENT

C 325⁵ c/o GRAVEL PIT.

C 353² TOP VERTICAL 11M GRAVEL PIT.

C 500 POST 3N1E ON STUMP OPEN

NO TIMBER, BUSHY. YELLOW & PINK FALGOUT.

J. J. DARLING CORP.
FAYAMA WASH DC

Plot in the Rain
WEA THERMOPLOT

N. 3151

1
+

BLK.	SD	%	HD	POST.
EAST.	55 ¹	+2	55 ¹	
CONTINUOUS	257 ²	-33	253 ³	
	275 ³	-37	271 ⁴	
	500	0	500m	3N3E

SOUTH.	325 ⁹	-6	325 ⁹	
CONTINUOUS	439 ⁶	-6	439 ⁶	
	500	0	500	2N3E

SOUTH.	170 ⁵	-9	170 ⁵	
CONTINUOUS	263 ⁶	0	263 ⁶	
	269 ²	0	269 ²	
	500	+7	500 ²	1N3E

NOTES

PAGE 4 of 7

- C 55¹ c/w Kuskumma ROAD TO HOTSPRINGS
- C 253³ CROSSING POWER LINE
- C 271⁴ CROSSING ROAD TO GAMBAGO DUMP.
- C 500 FLAT, CLEARED FROM TIMBER
- POST OFFSET N40G 14I ON 8" CEDAR.
- ONLY TRUE ALMBASHUT 3N3E. TIN TAKEN
- YELLOW & PINK FLAGGING.

- C 325⁹ BREAK FLAT TO FLAT
- C 439⁶ OUT OF LOGGED AREA INTO SMALL
- FIR-HORNED LINE 325⁹ TO 439⁶ FOLLOWS
- LOGGED GDEE.
- C 500 POST 2N3E ON 6" FIR SURROUNDED BY
- WHEAT PINE. TIN TAKEN & RIBBON.

- C 170⁵ BANK KUSKUMMA RIVER 23m DROP.
- C 263⁶ EDGE KUSKUMMA RIVER WATER
- C 269² SOUTH SIDE KUSKUMMA CREEK
- C 500 BOTTOM KUSKUMMA BRN W. POST.
- RIBBON YELLOW & PINK.

J. L. DARLINGTON CORP. PORTLAND, OREGON

W. A. TELFER & SONS, PORTLAND, OREGON

NO. 31, 312

FROM INEAL POSIT. DAY 2

BRCG.	SD.	0/0	H.D	Post.
EAST	129 ³	0	129 ³	
	208 ³	0	208 ³	
	302 ⁹	+6	302 ⁹	
CONTINUED.	406 ¹	+15-18	406 ¹	
	449	0	449	
	470	0	470	
	482 ²	0	482 ²	
	500	-31	500	1E

EAST	34 ¹	0	34 ¹	
	391 ¹	0	391 ¹	
CONTINUED.	476 ¹	0/+36hr 18m	476 ¹	
	500	0	500	2E

EAST	63 ^E	0	63 ^E	
	205 ⁹	0	205 ⁹	
CONTINUED.	280 ^E	+37	280 ^E	
	500	0	500	3E

	NOTES.	PAGES of 7
C 129 ³	C.P.R. SPJR CROSSING.	
C 208 ³	SOUTH 2m OLD LOG CAMP	
C 302 ⁹	C/L ROAD TO SMOOK MILLS (5.20m to C.P.R.)	
C 406 ¹	C.V.R. N.B. (5.25m to C/L C.P.R.)	
C 449	POWERLINE & SEWERLINE CROSSING	
C 470	C/L HWY #23	
C 482 ²	FIR TREE NG OF KUSKWAH BRIDGE (5.75m to BRIDGE A)	
C 500	E1 POST AT CREEK TIN & FLAGLINE	
C 34 ¹	CROSS KUSKWAH AT WATER INTAKE	
C 391 ¹	SIDE ROAD CROSSING.	
C 476 ¹	TIP OF FLAT MILL YARD	
C 500	2E POST FLAGLINE FOUND & PINN TIN OFFSET 3m N 6" ASPEN SOUTH 12m to LOWER POLE	
C 63 ^E	SOUTH 15m to POWER POLE & MILL	
C 205 ⁹	BOTTOM OF HILL BANK - CLEARED & TIMBER	
C 280 ^E	CROSSING "SPRINGS ROAD"	
C 500	FARM FIELD NO. POST OR FLAGLINE	

2. L. DARRING LUTY
 TACOMA, WASH. 1984
 N. 31.
 Photo on the line
 WEATHER PHOTO

BRC	SD	%	HD	POST
NORTH.	275 ¹	0	275 ¹	
	322 ²	0	322 ²	
	339	-42	339	
	500	0	500	IN3E

	NOTES	PAGE 6 of 7
C	275 ¹ START OF TIMBER ABOVE CRASSIN	
	MANY FENCE LINES. HOMES WEST OF	
	LINE.	
C	322 ² TOP OF FLAT.	
C	339 BOTTOM OF STEEP HILL - CRICK FL	
C	500 IN3E NO POST FLAGGIBLE.	
	ERROR OF CURSOR 4 ² NW TO IN3E.	

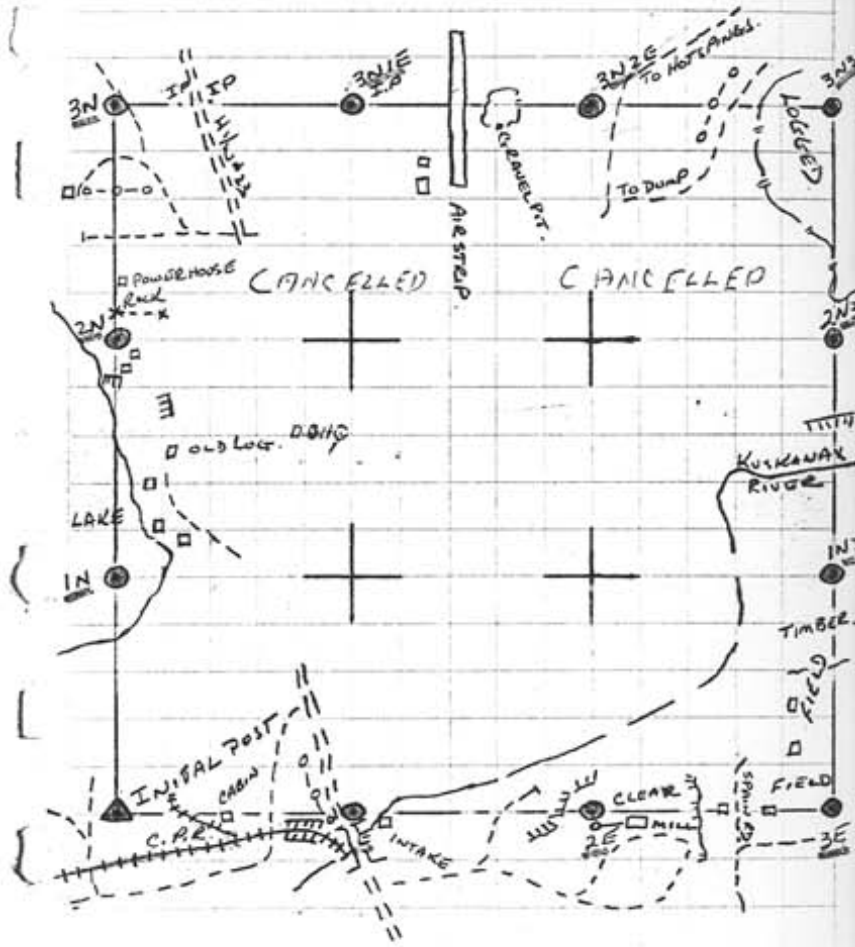
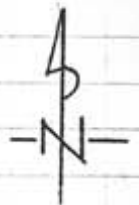
LA. SPRING LUMP
FALGUS MARI LUM

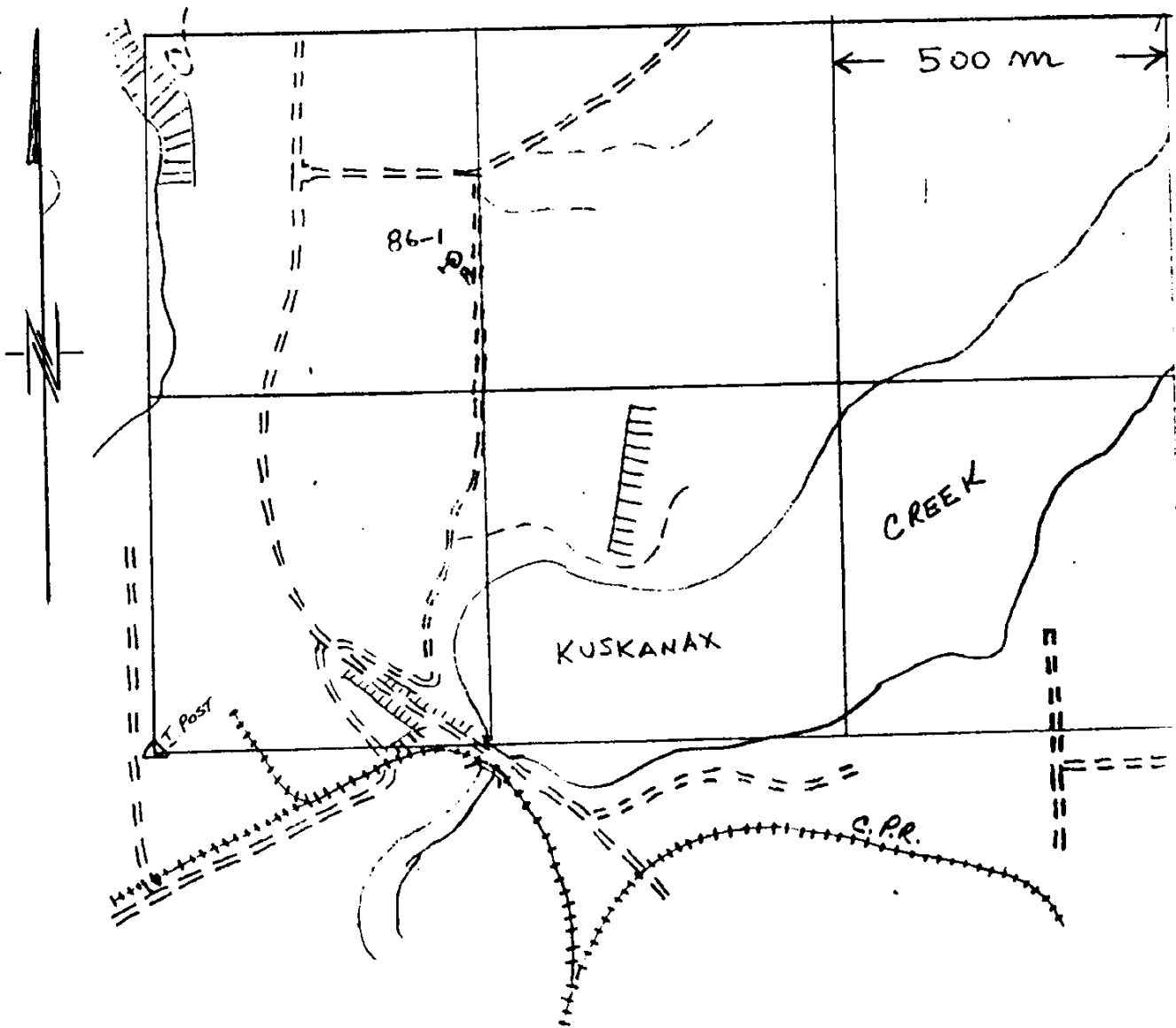
WATERING

SAMPLE TAKE



SKETCH MAP
M.C. PRINCE
NAKUSP, B.C.





PRINCE PROPERTY

○ DIAMOND DRILL HOLE

SCALE 1" = 800'

OCT. 1986

FIG: 4

ME ANALYTICAL LABORATORIES LTD.
E. HASTINGS ST. VANCOUVER B.C. V6A 1R6
PHONE 253-3158 TELEX 04-53124

DATE RECEIVED: OCT 22 1984

DATE REPORT MAILED: *Oct. 31/84..*

ASSAY CERTIFICATE

SAMPLE TYPE: PULP AU** AND AG** BY FIRE ASSAY

ASSAYER: *A. Toye* DEAN TOYE. CERTIFIED B.C. ASSAYER

ASARCO EXPLORATION FILE # 84-3111A

PAGE 1

SAMPLE#	Pb %	Ag** oz/t	Au** oz/t
100099	48.50	90.90	.218

ACME ANALYTICAL LABORATORIES LTD.

852 E. HASTINGS ST. VANCOUVER B.C. V6A 1R6

PHONE 253-3158

DATA LINE 251-1011

GEOCHEMICAL ICP ANALYSIS

.500 GRAM SAMPLE IS DIGESTED WITH 3ML 3-1-3 HCL-HNO3-H2O AT 95 DEG. C FOR ONE HOUR AND IS DILUTED TO 10 ML WITH WATER.
THIS LEACH IS PARTIAL FOR Mn, Fe, Co, P, Cr, Mg, Ba, Ti, G, Al, Mo, K, Ni, Si, Ir, Ce, Sn, Y, Nb and Ta. Au DETECTION LIMIT BY ICP IS 3 PPM.
- SAMPLE TYPE: ROCK CHIPS AU11 ANALYSIS BY FA-AA FROM 10 GRAM SAMPLE. Hg ANALYSIS BY FLAMELESS AA.

DATE RECEIVED: OCT 22 1984 DATE REPORT MAILED: *Oct 31/84* ASSAYER: *D. Toy* DEAN TOYE, CERTIFIED B.C. ASSAYER

ASARCO EXPLORATION FILE # 64-3111

PAGE 1

SAMPLE#	Kc	Cu	Pb	Zn	Ag	Ni	Co	Mn	Fe	As	U	Au	Th	Sr	Cd	Sb	Bi	V	Ca	P	La	Cr	Hg	Ba	Ti	B	Al	Na	K	M	Au11	Hg
	PPM	PPM	PPM	PPM	PPM	PPM	PPM	PPM	%	PPM	PPM	PPM	PPM	PPM	PPM	PPM	PPM	PPM	%	%	PPM	PPM	%	PPM	%	PPM	%	%	PPM	PPM	PPM	
100099	1	11449	20661	3175	312.7	3	1	67	.88	5	5	<i>LD</i>	2	7	237	2459	2	2	.01	.01	2	2	.01	15	.01	2	.02	.01	.01	2	-	-
STD C	20	60	45	127	6.9	71	27	1088	3.62	40	19	8	36	51	18	16	21	58	.44	.12	42	58	.88	177	.08	39	1.62	.06	.12	12	-	-

14

10.0

PRINCE PROPERTY - Itemized Cost Statement.

DIAMOND DRILLING

April 23/86 - April 28/86

EX 16.8m x 59.00 per metre *OWN MACHINE* \$ 991.20

MACHINERY - TRUCK

4x4 pickup (6 days)..... *OWN MACHINERY & TRUCK* 300.00

FOOD & ACCOMODATION

Invoice # 3054..... 305.97

CLAIM SURVEY (Flagging & Notes)

Invoice..... 300.00

\$1897.17

Asarco Exploration

D. M. Fletcher
Manager — Western Canada

November 2, 1984

Mr. Jack Harris
P.O. Box 42
Nakusp, B.C.

Nakusp Ag-Pb-Au Prospect
82K/5W


Dear Jack:

Thank you for the sketch map of your silver-lead property at Nakusp and the mineral sample which I have had analysed. Assay results which are enclosed include a rock geochem analysis for 30 elements and fire assays for gold and silver. I had anticipated high lead and silver values but the gold value comes somewhat as a surprise. Judging from the amount of antimony obtained by the ICP analysis, there must be an antimony sulfide (probably tetrahedrite) in with the galena.

I would certainly like to examine your property however current commitments prevent me from doing so. Perhaps on my next visit to the area I could examine the property.

Thank you for bringing the property to our attention and good luck in your future endeavours.

Yours very truly,



Del Olson

Enclosures