



388  
87-319-16097

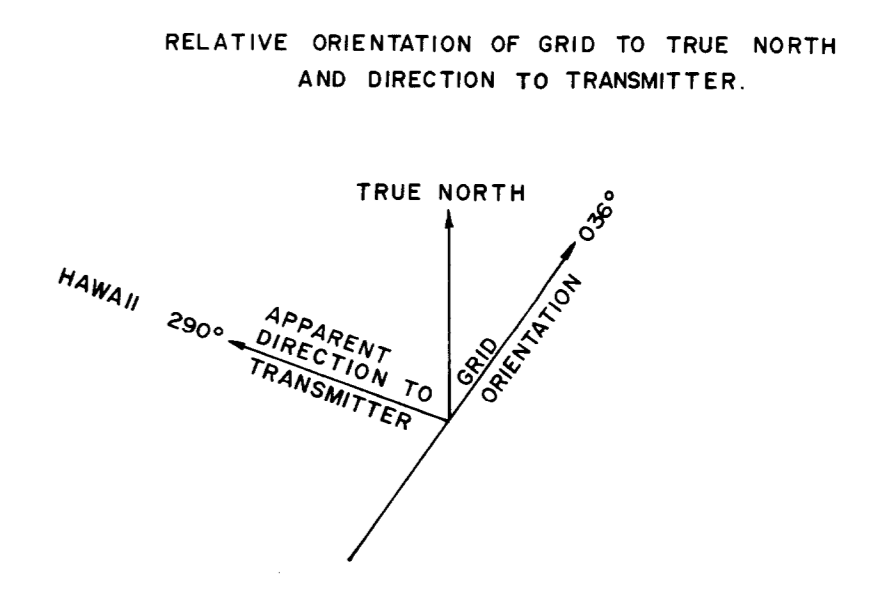
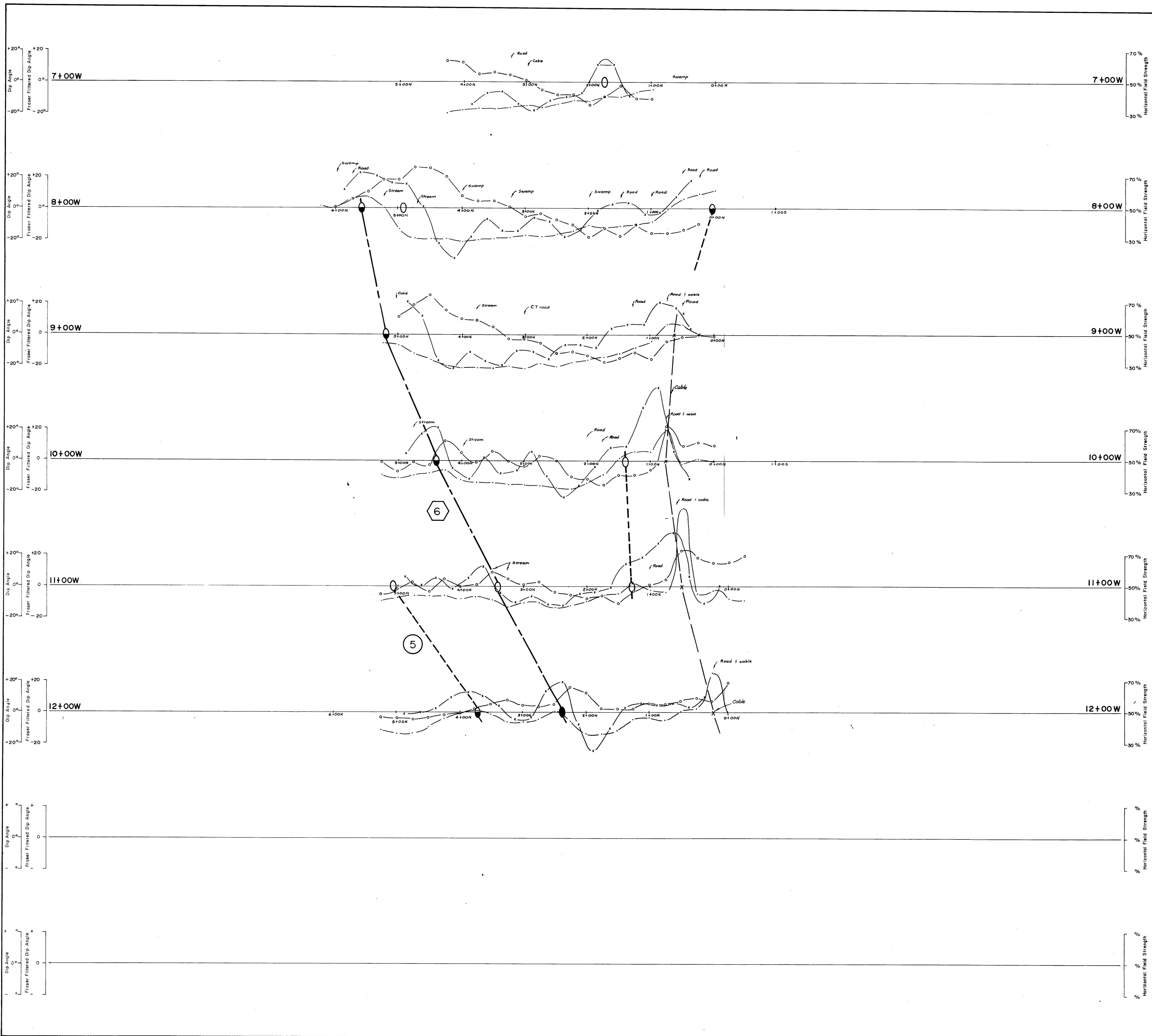
SUB-RECORDER	
RECEIVED	
JUN 3 1987	
M.R. # .....	\$ .....
VANCOUVER, B.C.	

VOLUME III - MAPS FOR  
 REPORT ON PHASES I, II AND III  
 GEOLOGY, GEOCHEMISTRY, GEOPHYSICS  
 AND DIAMOND DRILLING  
 ON THE  
 COW PROPERTY  
 VICTORIA MINING DIVISION, B.C.  
 NTS 92C/16E AND 92B/13W  
 48°54'N LATITUDE 124°01' W LONGITUDE  
 FOR  
 INTERNATIONAL CHEROKEE DEVELOPMENTS LTD.  
 FEBRUARY 27, 1987  
 G. ALLEN, P.Geol.

FILMED

PART 3 OF 3  
 GEOLOGICAL BRANCH  
 ASSESSMENT REPORT

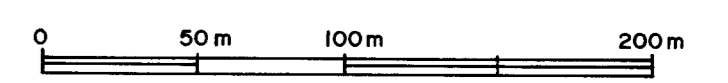
16,097



- LEGEND**
- PROFILES:**
- Horizontal Field Strength (in percent)
  - Dip Angle (in degrees)
  - Fraser Filtered Dip Angle
- INTERPRETATION:**
- Conductors:**
- Strong - Definite
  - Moderate - Probable
  - Weak - Possible
  - Contact
  - Cultural - Cables, power lines, etc.
- Conductive Zones:**
- Probable Bedrock Conductor
  - Other
- Conductor Continuity:**
- Definite
  - Probable
  - Possible
- INSTRUMENT** - Sobro 27 VLF-EM Receiver

**PART 3 OF 3  
GEOLOGICAL BRANCH  
ASSESSMENT REPORT**

**16,097**



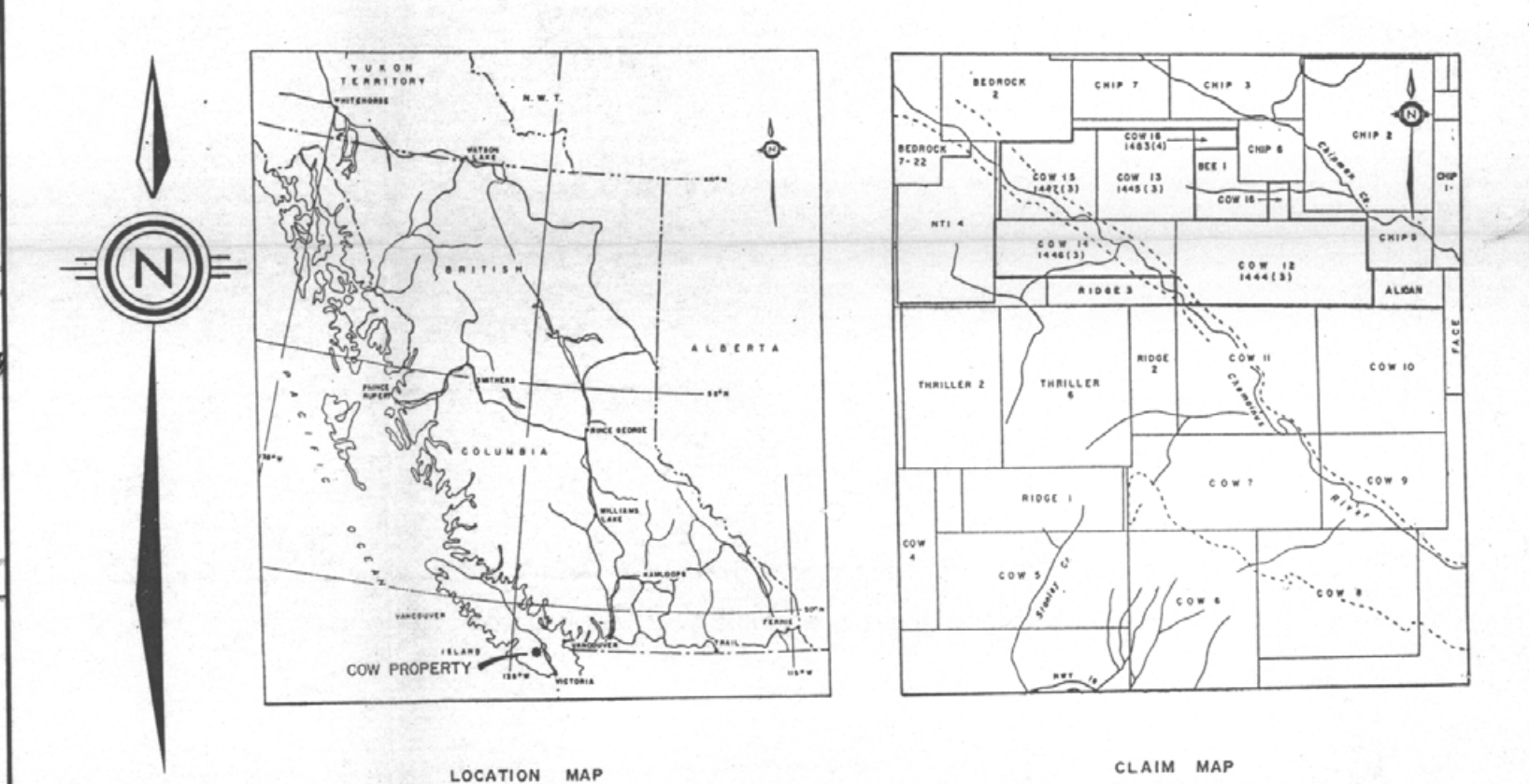
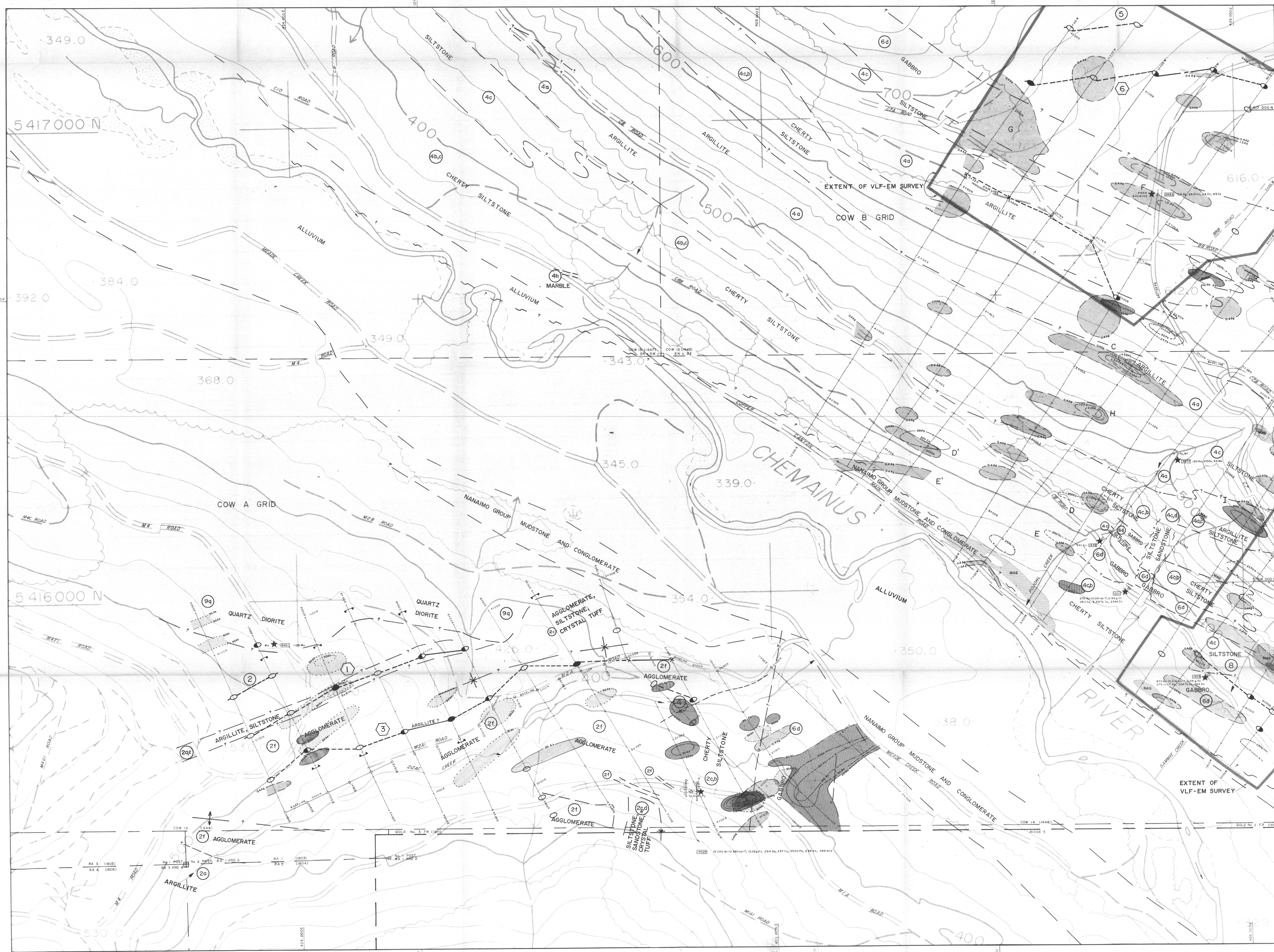
INTERNATIONAL CHEROKEE DEVELOPMENTS LIMITED

VLF-EM SURVEY  
PROFILES  
LINES 7+00W - 12+00W  
COW PROPERTY - B GRID  
VICTORIA MINING DIVISION

Project No. V 240 By H.M., G.A.  
Scale: 1:2500 Drawn: M.W.  
Drawing No. AB - 8d Date: FEBRUARY 1987

**MPH** MPH Consulting Limited





- LEGEND**
- GEOLOGY**
- MEGASCOTIC
    - 4 Gabbro
  - PALEOZOIC SICKER GROUP
    - 4 Comox River Formation Sediments
    - 2 Macaplan Ridge Formation Pyroclastics
    - 1 Nitinat Formation Basic Volcanics
- SYMBOLS**
- Geological Contact
  - Foot Wall
  - Fault
- ANOMALOUS ROCK SAMPLES**
- Bedrock
  - Flint
  - Analyses as indicated
- SOIL GEOCHEMICAL ANOMALIES**
- Au (ppb)
  - Ag (ppm)
  - As (ppm)
  - Cu (ppm)
  - Pb (ppm)
  - Zn (ppm)
- BIOGEOCHEMICAL ANOMALIES**
- Au (ppb) in conifer branch samples (Douglas Fir and Western Hemlock)
- GEOPHYSICAL ANOMALIES**
- Magnetic Survey
    - Magnetic source
    - Magnetic domain
    - Magnetic domain boundary
  - VLF-EM Survey
    - Conductors: weak, moderate, strong
    - Conductive zones
    - Possible bedrock
    - Other
    - Conductor continuity:
      - Definite
      - Probable
      - Possible
    - Apparent lithologic contact

- NOTE: NOT ALL SURVEYS NECESSARILY CONDUCTED ON EACH PROPERTY.
- SYMBOLS**
- Outcropping mineralization with sample number
  - Trench
  - Grid lines
  - Diamond drill holes
  - Legal corner post with claim name and claim boundaries
  - Boundary of overlapping claim
  - Trail
  - Soil geochemical anomaly discussed in text
  - Roads:
    - 2 WD accessible, all weather
    - 4 WD accessible
    - Road presently inaccessible to vehicles

PART 3 OF 3  
GEOLOGICAL BRANCH  
ASSESSMENT REPORT

**16,097**

20M TOPOGRAPHIC CONTOUR INTERVAL  
CLAIM BOUNDARIES FROM L.C.P.'S LOCATED IN FIELD

INTERNATIONAL CHEROKEE DEVELOPMENTS LIMITED

GEOLOGY, GEOCHEMISTRY AND GEOPHYSICS COMPOSITE  
A AND B (WEST HALF) GRIDS  
COW PROPERTY  
VICTORIA MINING DIVISION

Project No. V 240 By G.A.  
Scale: 1:2500 Drawn M.W.  
Drawing No. AB-9 Date FEBRUARY 1987

**MPH** MPH Consulting Limited



001°

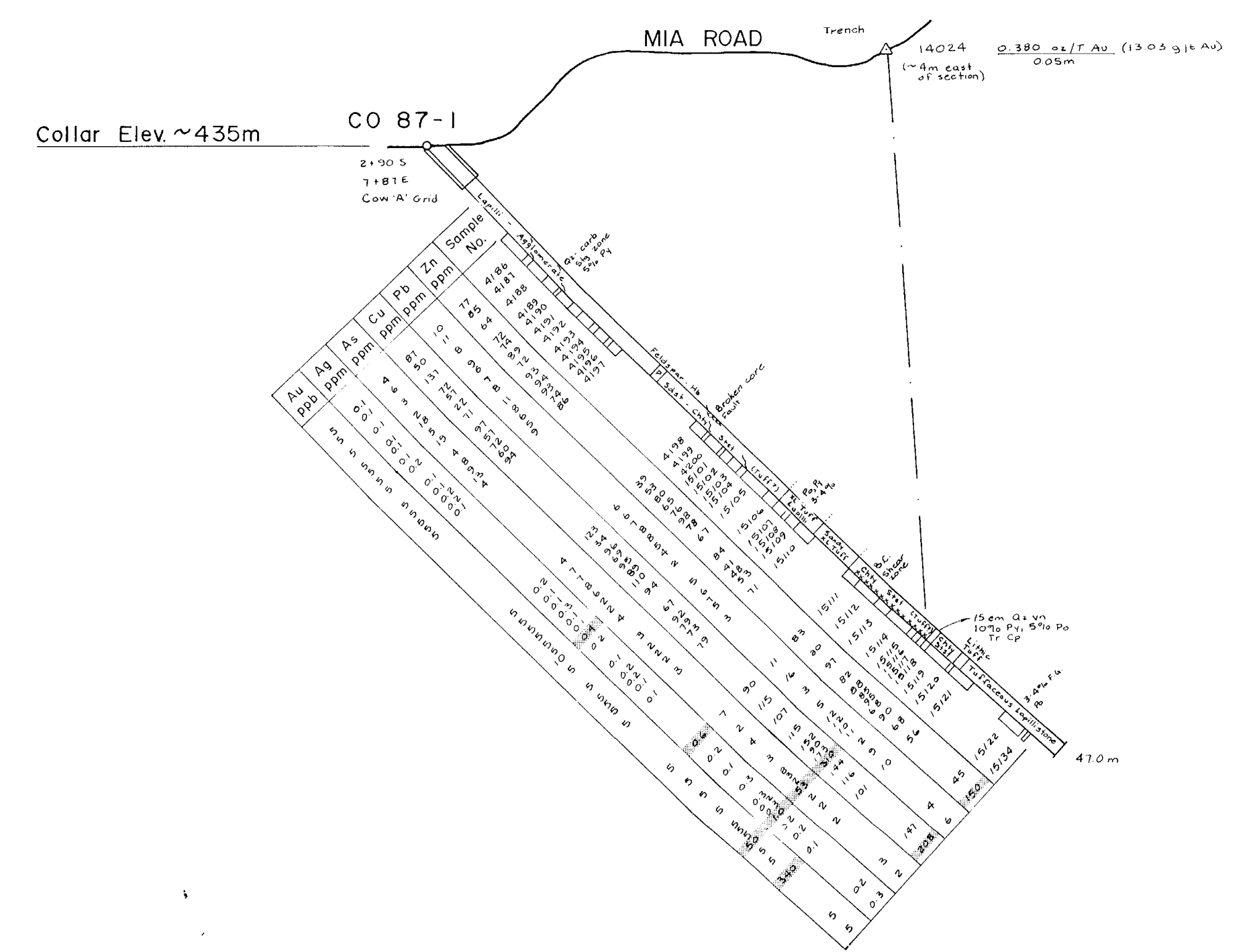
181°

425m

425m

400m

400m



LEGEND

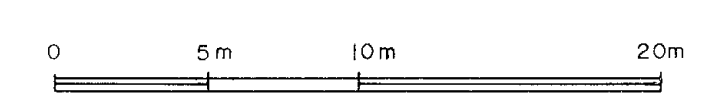
- CENOZOIC**
- QUATERNARY**
- 12 Unconsolidated sediments: glacial outwash, fill, and alluvium
- MESOZOIC**
- CRETACEOUS**
- 10 NANAIMO GROUP: conglomerate, sandstone, siltstone, shale, minor coal (undifferentiated)
- JURASSIC**
- 9 ISLAND INTRUSIONS:
    - 9b mafic dykes
    - 9a diorite
    - 9f feldspar porphyry
    - 9c quartz diorite to granodiorite
- TRIASSIC**
- 6 Karmutsen Formation (?): basaltic rocks
    - 6b diabase
    - 6d gabbro and flower porphyry
- PALEOZOIC**
- UPPER SILURIAN TO LOWER PERMIAN**
- SICKER GROUP**
- 4 Cameron River Formation (formerly mapped as Myra and/or Sediment Silt Formations)
    - 4a argillite, slate + chertiferous porphyroclasts
    - 4b chert, cherty siltstone, cherty tuff, locally ferruginous, jasperoid
    - 4c siltstone, locally hornfelsed
    - 4d sandstone, locally hornfelsed
    - 4e crystal tuff, tuffaceous sediment
    - 4f heterolithic conglomerate and sedimentary breccia
    - 4g green phyllite (protolith uncertain)
    - 4h marble
  - 2 McLaughlin Ridge Formation (formerly mapped as Nitinat and/or Myra Formations)
    - 2a argillite
    - 2b cherty tuff, cherty siltstone
    - 2c tuffaceous siltstone, siltstone
    - 2d tuffaceous sandstone, sandstone
    - 2e crystal tuff, sandy tuff
    - 2f lapilli tuff, tuff lapillistone, agglomerate
  - 1 Nitinat Formation
    - 1a pyroxene crystal tuff, lapilli tuff
    - 1b pyroxene rich volcanic breccia, agglomerate
    - 1f feldspar crystal tuff, lapilli tuff
    - 1i laminated tuff, cherty tuff
    - 1o massive aphyritic mafic flows
    - 1q pyroxene porphyry (flows and intrusions)
    - 1s massive tuff, tuffaceous sandstone
- NOTE: Legend based in part on Massey, BCMEMPR, QF 1987/2 and Muller, 1980 a, GSC Paper 79-30.

ABBREVIATIONS

<b>Minerals:</b>	<b>Rock Types:</b>	<b>Textures:</b>	<b>General:</b>
As arsenopyrite	Aggl agglomerate	Bx breccia	Abdt abundant
Cp chalcopyrite	Arg argillite	Chy cherty	XI crystal
Gl galena	Carb carbonate	CG coarse grained	Frct(s) fracture(s)
Hm hematite	Cong conglomerate	FG fine grained	Frag(s) fragment(s)
Mt magnetite	IF Iron formation	MG medium grained	Int Bdd Interbedded
Mc malachite	(ferruginous chert)		J joint
Po pyrrothite	Jspr jasper		Shr shear
Py pyrite	QFP quartz feldspar		Sil siliceous, silicified
Qz quartz	Porphyry porphyry		Stg stringer
Sl sphalerite	Sdst sandstone		Tr trace
	Sst siltstone		

SYMBOLS

- Shear or stringer
- Strong vein
- Assumed projection of quartz vein
- Broken core
- Subdivision of unit
- Anomalous value



PART 3 OF 3  
 GEOLOGICAL BRANCH  
 ASSESSMENT REPORT  
 16,097

*London J. Allen*

INTERNATIONAL CHEROKEE DEVELOPMENTS LIMITED	
DRILL SECTION DDH CO 87-1 COW PROPERTY VICTORIA MINING DIVISION	
Project No: V 240 III	By: G.A.
Scale: 1 : 250	Drawn: M.W.
Drawing No: AB - 10a	Date: FEBRUARY 1987
<b>MPH Consulting Limited</b>	



000°

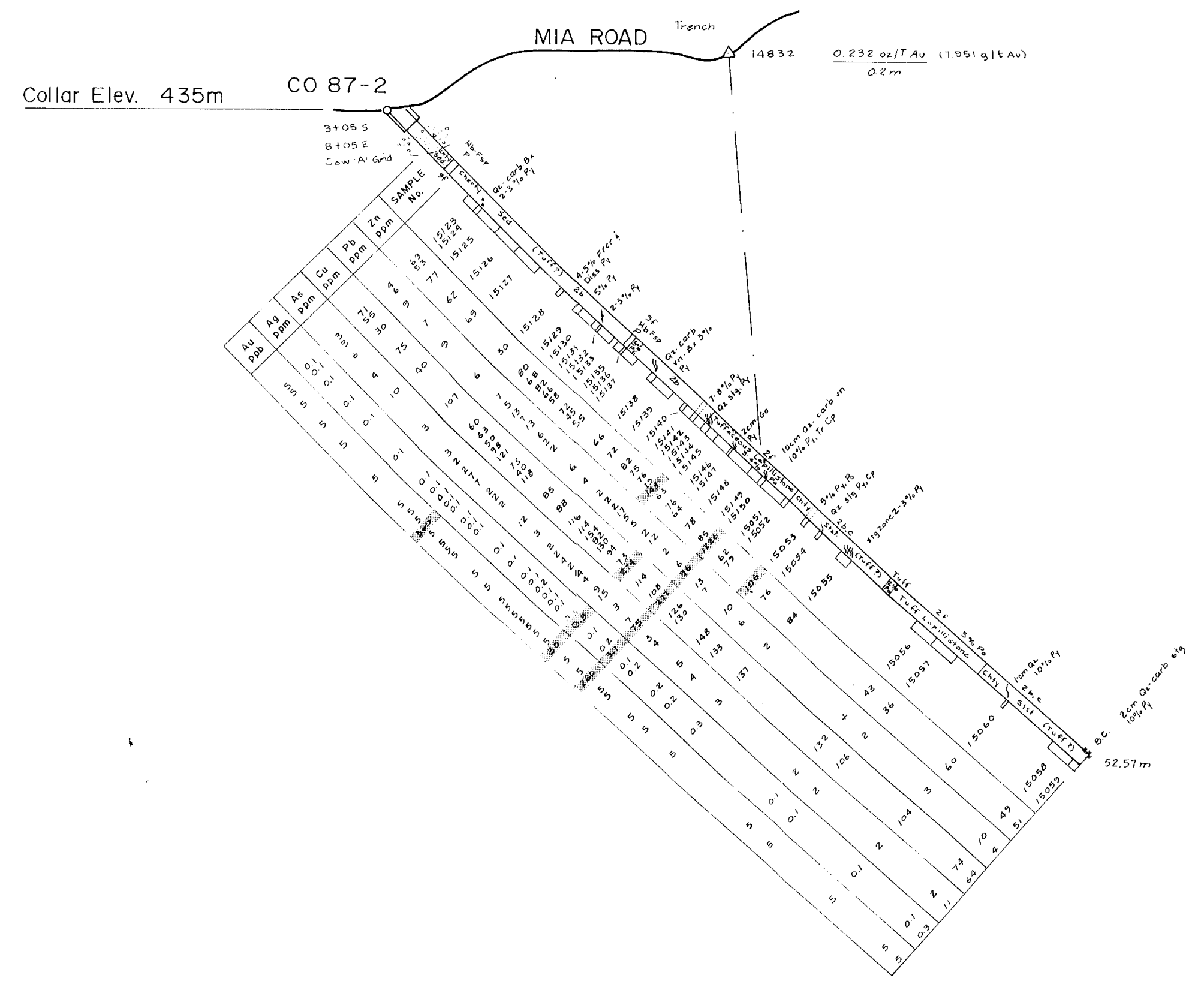
180°

425m

425m

400m

400m



LEGEND

- CENOZOIC**
- QUATERNARY**
- 12 Unconsolidated sediments: glacial outwash, till, and alluvium
- MESOZOIC**
- CRETACEOUS**
- 10 NANAIMO GROUP: conglomerate, sandstone, siltstone, shale, minor coal (undifferentiated)
- JURASSIC**
- 9 ISLAND INTRUSIONS:
  - 9a mafic dykes
  - 9b diorite
  - 9f feldspar porphyry
  - 9g quartz diorite to granodiorite
- TRIASSIC**
- 6 Karmutsen Formation (?): basaltic rocks
  - 6b diabase
  - 6d gabbro and flower porphyry
- PALEOZOIC**
- UPPER SILURIAN TO LOWER PERMIAN**
- SICKER GROUP**
- 4 Cameron River Formation (formerly mapped as Myra and/or Sediment Hill Formations)
  - 4a argillite, slate & chert-like porphyroblasts
  - 4b chert, cherty siltstone, cherty tuff, locally ferruginous, jasperoid
  - 4c siltstone, locally hornfelsed
  - 4d sandstone, locally hornfelsed
  - 4e crystal tuff, tuffaceous sediment
  - 4f laterolithic conglomerate and sedimentary breccia
  - 4g green phyllite (protom uncertain)
  - 4h marble
- 2 McLaughlin Ridge Formation (formerly mapped as Nitinat and/or Myra Formations)
  - 2a argillite
  - 2b cherty tuff, cherty siltstone
  - 2c tuffaceous siltstone, siltstone
  - 2d tuffaceous sandstone, sandstone
  - 2e crystal tuff, sandy tuff
  - 2f lapilli tuff, tuff lapillitstone, agglomerate
- 1 Nitinat Formation
  - 1a pyroxene crystal tuff, lapilli tuff
  - 1b pyroxene rich volcanic breccia, agglomerate
  - 1f feldspar crystal tuff, lapilli tuff
  - 1i laminated tuff, cherty tuff
  - 1o massive aphyric mafic flows
  - 1p pyroxene porphyry flows and intrusions
  - 1s massive tuff, tuffaceous sandstone

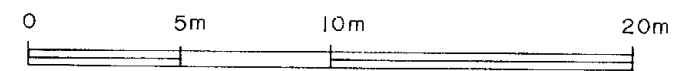
NOTE: Legend based in part on Mossey, BCMEMPR, OF 1987/2 and Muller, 1980+, GSC Paper 79-30.

ABBREVIATIONS

Minerals:	Rock Types:	Textures:	General:
As arsenopyrite	Aggl agglomerate	Bx breccia	Abdt abundant
Cp chalcopyrite	Arg argillite	Chty cherty	Xl crystal
Gl galena	Carb carbonate	CG coarse grained	Frcr(s) fracture(s)
Hm hematite	Cong conglomerate	FG fine grained	Frag(s) fragment(s)
Mt magnetite	IF iron formation	MG medium grained	Int Bdd interbedded
Mc malachite	(ferruginous chert)		J joint
Po pyrrhotite	Jspr jasper		Shr shear
Py pyrite	QFP quartz feldspar		Sil siliceous, silicified
Qz quartz	porphyry		Stg stringer
Sp sphalerite	Sdst sandstone		Tr trace
	Sist siltstone		

SYMBOLS

- Shear or stringer
- Strong vein
- Assumed protection of quartz vein
- Broken core
- Subdivision of unit
- Anomalous value

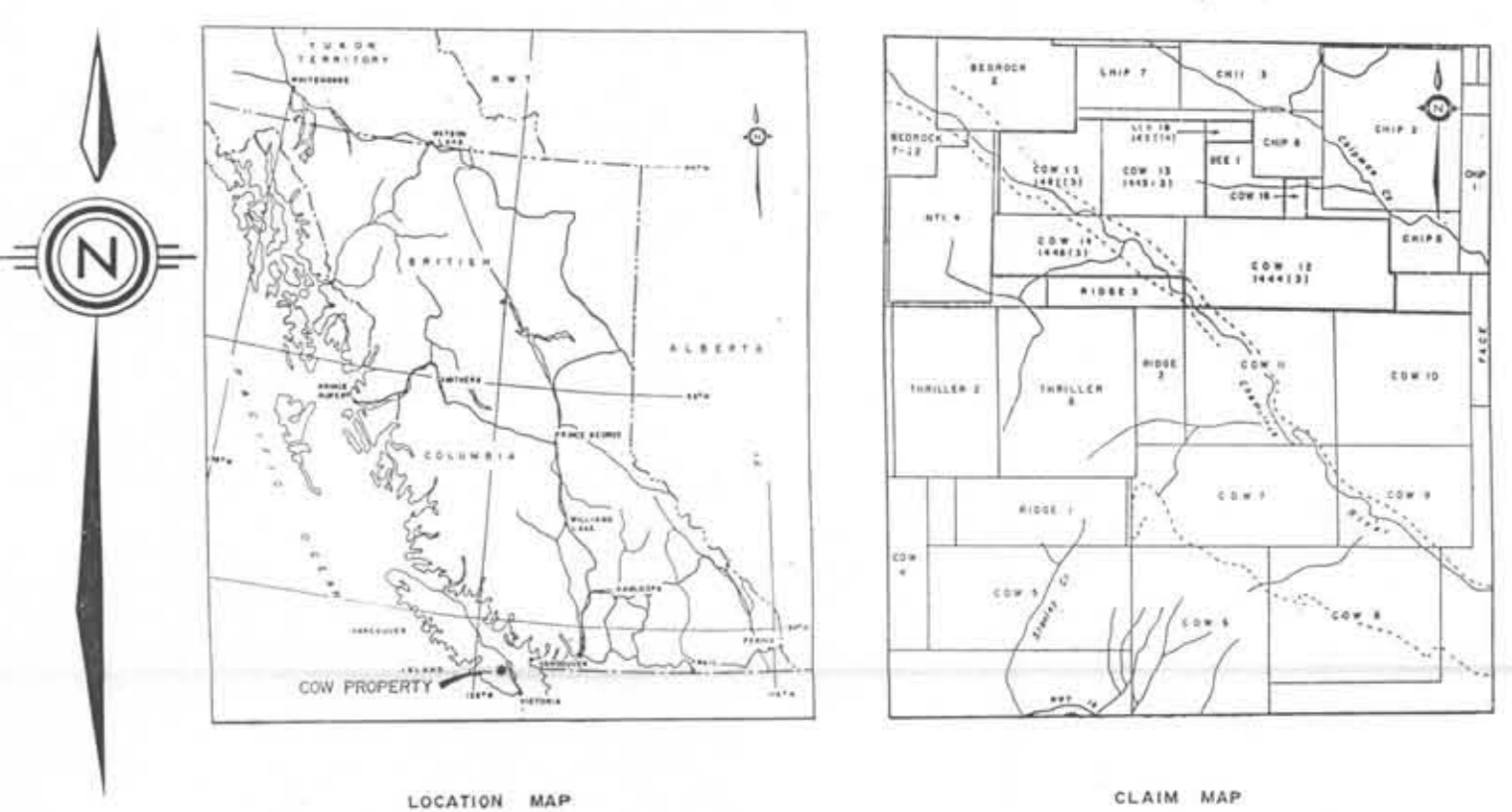
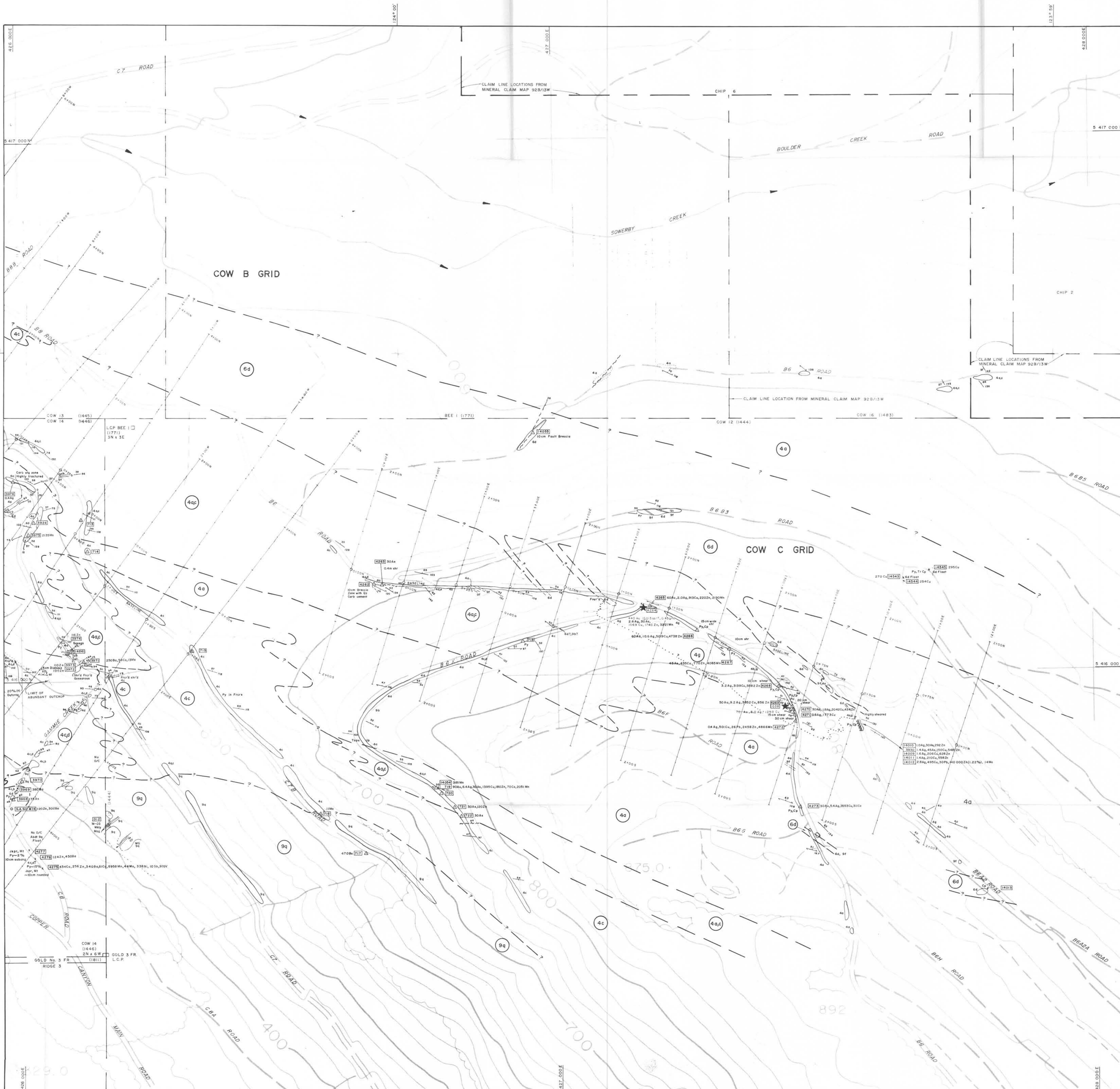


London J. Allen

PART 3 OF 3  
 GEOLOGICAL BRANCH  
 ASSESSMENT REPORT  
 16,097

INTERNATIONAL CHEROKEE DEVELOPMENTS LIMITED	
DRILL SECTION DDH CO 87-2 COW PROPERTY VICTORIA MINING DIVISION	
Project No: V 240 III.	By: G.A.
Scale: 1 : 250	Drawn: M.W.
Drawing No: AB - 10 b	Date: FEBRUARY 1987
<b>MPH Consulting Limited</b>	





**LEGEND**

**CENOZOIC**

**QUATERNARY**

12 Unconsolidated sediments: glacial outwash, fill, and alluvium

**MESOZOIC**

**CRETACEOUS**

10 NARANJO GROUP: conglomerate, sandstone, siltstone, shale, minor coal (undifferentiated)

**JURASSIC**

**ISLAND INTRUSIONS:**

9a mafic dykes  
9b diorite  
9c felsic porphyry  
9d quartz diorite to granodiorite

**TRIASSIC**

8 Karmutsen Formation (?): basaltic rocks  
8a diabase  
8b gabbro and flow porphyry

**PALEOZOIC**

**UPPER SILURIAN TO LOWER PERMIAN**

**SICKEN GROUP**

4 Cameron River Formation (formerly mapped as Myra and/or Sediment Hill Formations)

4a argillite, silty siltstone, cherty tuff, locally heterogeneous, papered  
4b siltstone, locally laminated  
4c sandstone, locally laminated  
4d crystal tuff, tuffaceous sediment  
4e heterolithic conglomerate and sedimentary breccia  
4f green phyllite (possibly unmetamorphosed)  
4g mudstone

2 McLaughlin Ridge Formation (formerly mapped as Nitinat and/or Myra Formations)

2a argillite tuff, cherty siltstone  
2b tuffaceous siltstone, siltstone  
2c tuffaceous sandstone, sandstone  
2d crystal tuff, sandy tuff  
2f lapilli tuff, tuff lapillitstone, agglomerate

1 Nitinat Formation

1a pyroxene crystal tuff, lapilli tuff  
1b pyroxene rich volcanic breccia, agglomerate  
1f felsic crystal tuff, lapilli tuff  
1g lamellated tuff, cherty tuff  
1h massive argillite, mudstone  
1i pyroxene porphyry (dikes and intrusions)  
1j massive tuff, tuffaceous sandstone

NOTE: Legend boxes in part on Messers, BCMEWP, G.F. 1962/2 and Muller, 1980-4, OSC Paper 79-30.

**SYMBOLS**

**Geologic Contacts:**

Defined, approximate, assumed, gradational

Surface trace of axial planes:  
Synform, antiform

Faults:  
Defined, approximate, assumed

Bedding

Foliation

Joint

Shear

Glacial striation

Vein

Trench

Outcrop with field note number and lithology

Sample locations with sample numbers and anomalous analyses (Au ppm, others ppb):  
15548 4400Au  
15839 X  
15840 O  
15841 O  
15842 O  
15843 O  
15844 O  
15845 O  
15846 O  
15847 O  
15848 O  
15849 O  
15850 O  
15851 O  
15852 O  
15853 O  
15854 O  
15855 O  
15856 O  
15857 O  
15858 O  
15859 O  
15860 O  
15861 O  
15862 O  
15863 O  
15864 O  
15865 O  
15866 O  
15867 O  
15868 O  
15869 O  
15870 O  
15871 O  
15872 O  
15873 O  
15874 O  
15875 O  
15876 O  
15877 O  
15878 O  
15879 O  
15880 O  
15881 O  
15882 O  
15883 O  
15884 O  
15885 O  
15886 O  
15887 O  
15888 O  
15889 O  
15890 O  
15891 O  
15892 O  
15893 O  
15894 O  
15895 O  
15896 O  
15897 O  
15898 O  
15899 O  
15900 O

Rock - float  
Silt or soil  
Outstanding anomalous mineralization  
Diamond drill hole  
L.C.P. with claim name and claim boundaries  
Boundary of oversteaking claim

Roads:  
2 WD accessible, all weather  
4 WD accessible  
Road presently inaccessible to vehicles  
Trail

**ABBREVIATIONS**

**Minerals:**

As arsenopyrite  
Cp chalcopyrite  
Gt galena  
Hm hematite  
Mt magnetite  
Ml malachite  
Jsp jasper  
Qz quartz  
Sp sphalerite  
Stst stannite

**Rock Types:**

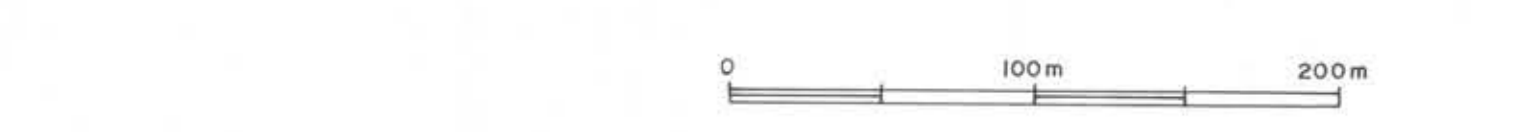
Agg agglomerate  
Arg argillite  
Carb carbonate  
Cng conglomerate  
IF iron formation (feruginous chert)  
Pp pyrrhotite  
Pyr pyrite  
Por porphyry  
Sst sandstone  
Sil siltstone

**Textures:**

Bx breccia  
Chy cherty  
CG coarse grained  
FG fine grained  
Int Int  
MG medium grained

**General:**

Abd abundant  
XI crystal  
Frc(s) fracture(s)  
Frg(s) fragment(s)  
Int Int  
IntBd interbedded  
J joint  
Shr shear  
Sil siliceous, silicified  
Stg stringer  
Tr trace



20m TOPOGRAPHIC CONTOUR INTERVAL.  
CLAIM LINES FROM L.C.P. LOCATED IN FIELD UNLESS OTHERWISE INDICATED.

**PART 3 OF 3  
GEOLOGICAL BRANCH  
ASSESSMENT REPORT**

**16,097**

INTERNATIONAL CHEROKEE DEVELOPMENTS LIMITED

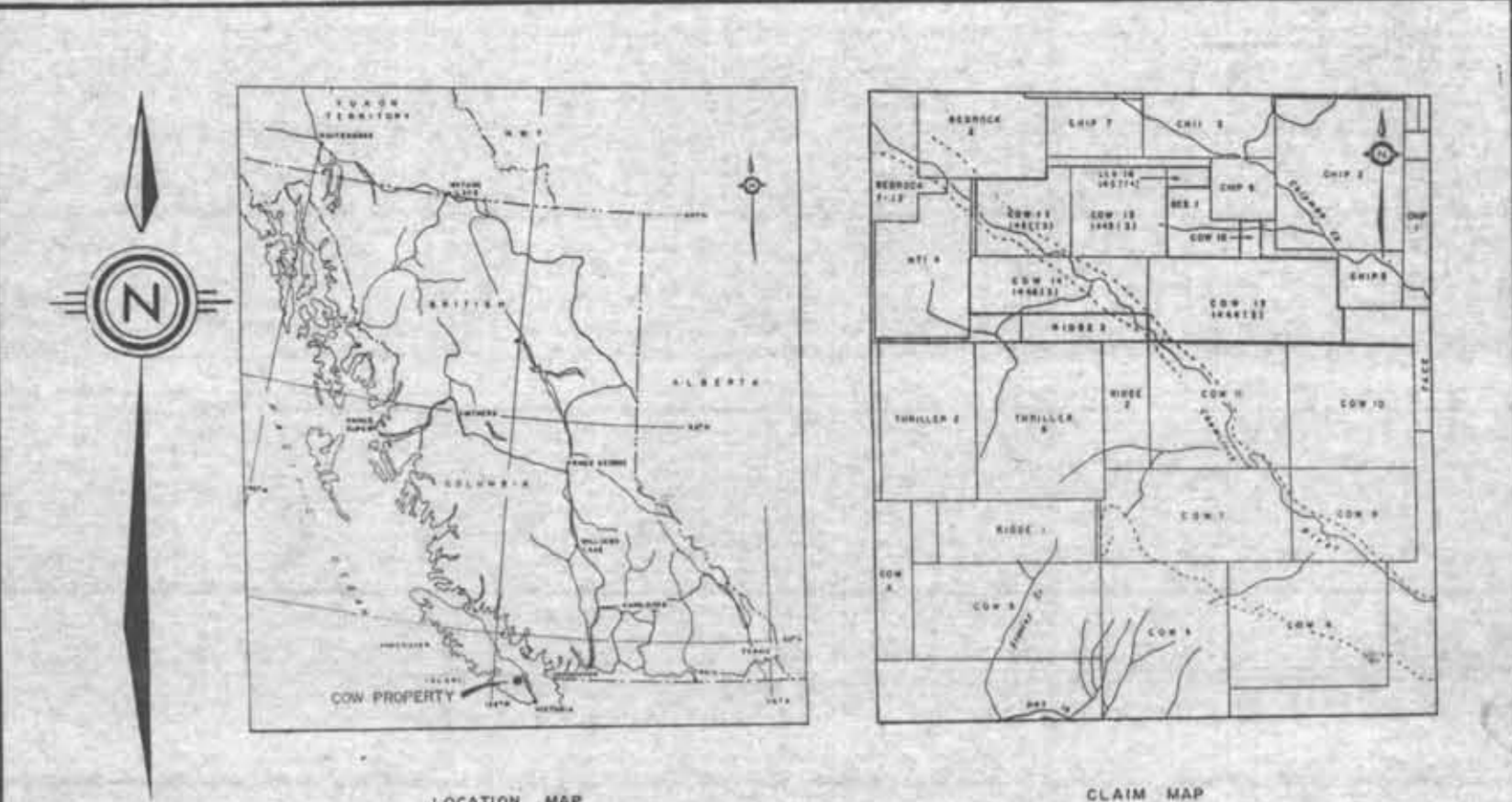
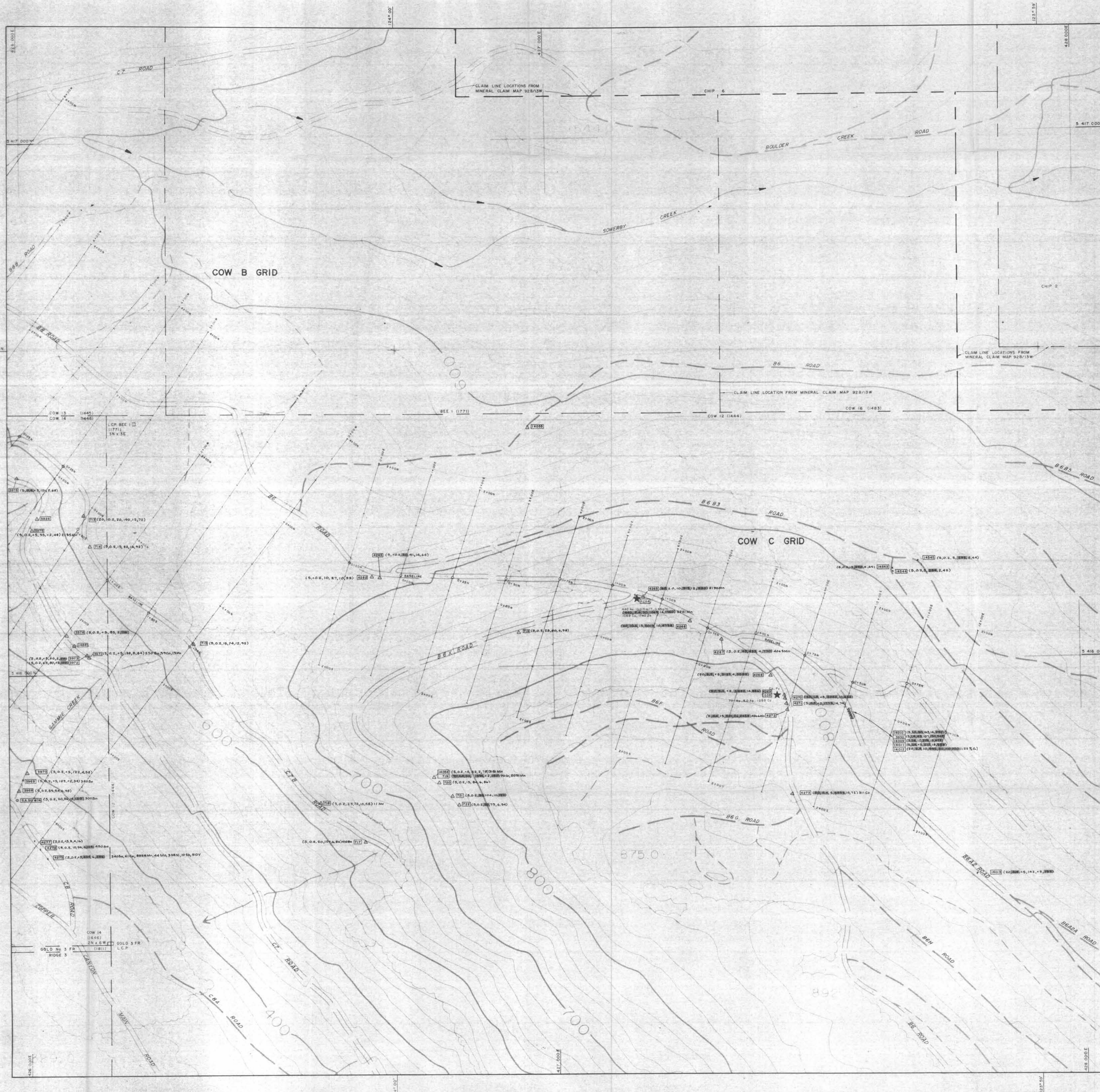
**GEOLOGY**  
B (EAST HALF) AND C GRIDS  
COW PROPERTY

VICTORIA MINING DIVISION

Project No: V 240 By: G.A., D.A.  
Scale: 1:2500 Drawn: M.W.  
Drawing No: BC-3 Date: FEBRUARY 1987

**MPH Consulting Limited**





**LEGEND**

Rock sample location (outcrop) with sample number  
Rock sample location (float) with sample number  
Silt sample location with sample number

Analyses: Au, Ag, As, Cu, Pb, Zn (selected values anomalous)  
0.500 oz./T. Au-Gold assay

Values considered anomalous in rock

All values plotted

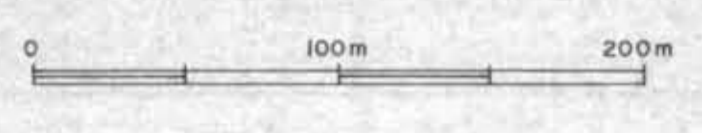
Values plotted if anomalous

Au	≥ 30 ppm
Ag	≥ 0.4 ppm
As	≥ 30 ppm
Cu	≥ 200 ppm
Pb	≥ 25 ppm
Zn	≥ 100 ppm
Co	≥ 50 ppm
V	≥ 250 ppm
Sb	≥ 6 ppm
Mo	≥ 200 ppm
W	≥ 10 ppm
Mn	≥ 2000 ppm
Ni	≥ 100 ppm

**SYMBOLS**

Fault  
Outstanding mineralization with sample number  
Trench  
Grid line  
Diamond drill holes  
Legal corner post with claim name and claim boundaries  
Boundary of oversteaking claim  
New station on old grid line

Roads:  
2 WD accessible, all weather  
4 WD accessible  
Road presently inaccessible to vehicles  
Trail



20m TOPOGRAPHIC CONTOUR INTERVAL  
CLAIM LINES FROM L.C.P.'s LOCATED IN FIELD UNLESS OTHERWISE INDICATED

PART 3 OF 3  
GEOLOGICAL BRANCH  
ASSESSMENT REPORT

16,097

INTERNATIONAL CHEROKEE DEVELOPMENTS LIMITED

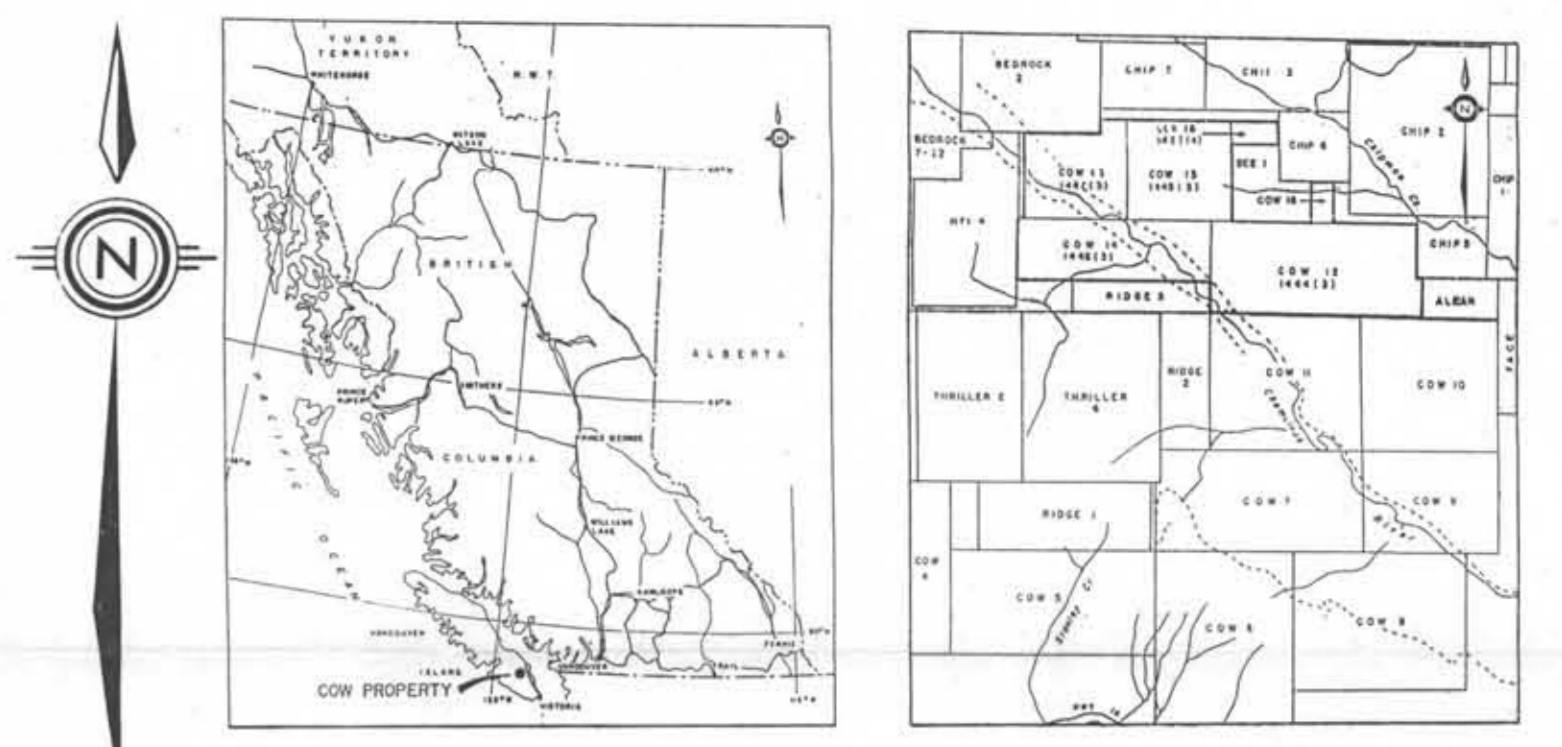
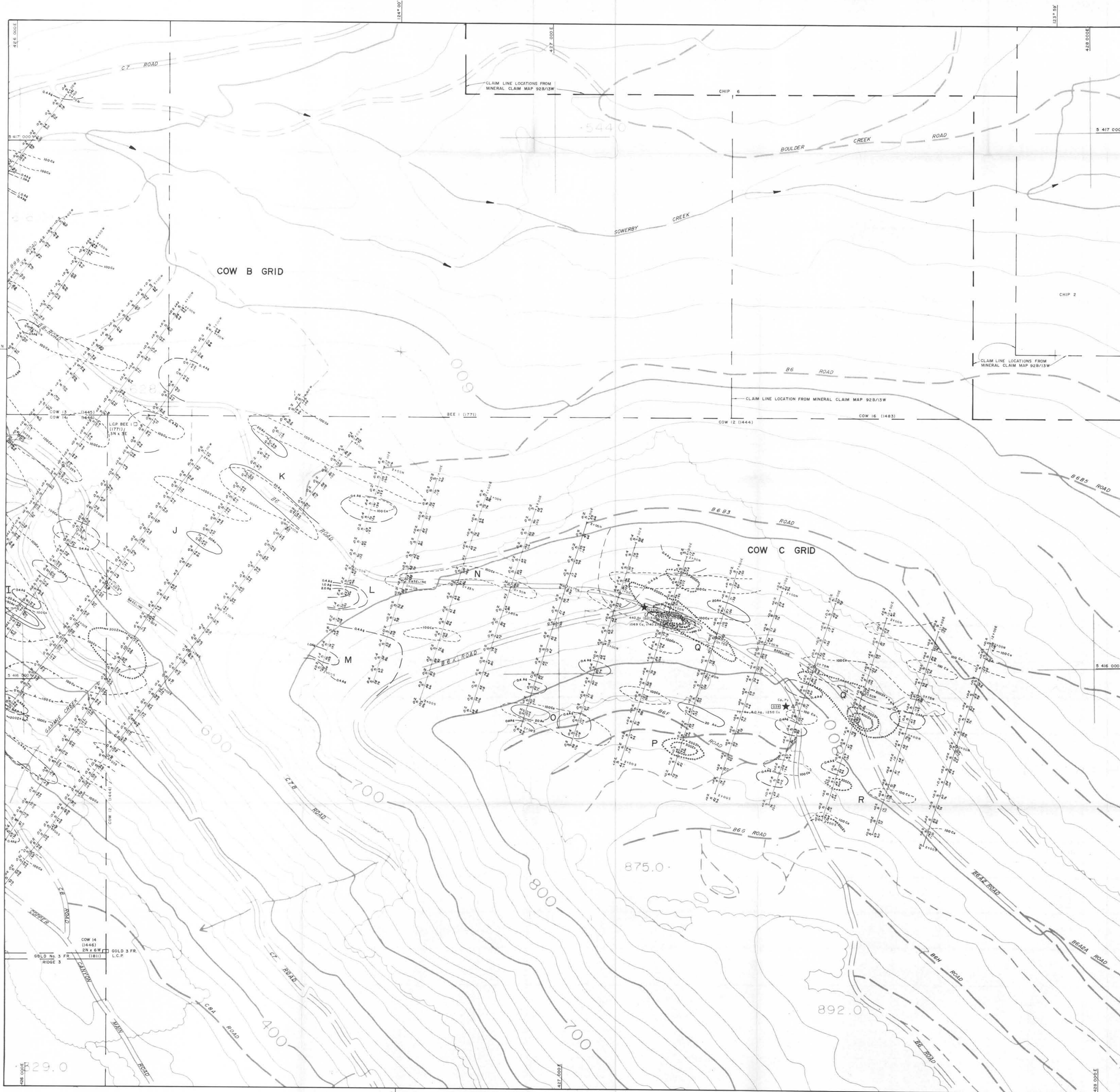
ROCK AND SILT SAMPLE SITE LOCATIONS AND ANALYSES B (EAST HALF) AND C GRIDS COW PROPERTY

VICTORIA MINING DIVISION

Project No.	V 240	By	G.A., D.A.
Scale:	1:2500	Drawn:	M.W.
Drawing No.	BC-4	Date:	FEBRUARY 1987

**MPH** MPH Consulting Limited





**LEGEND**

GRID LINE, SAMPLE SITE AND ANALYSES:

R<sub>a</sub> - Resanalyse  

 R<sub>s</sub> - Resample  

 N<sub>S</sub> - No Sample

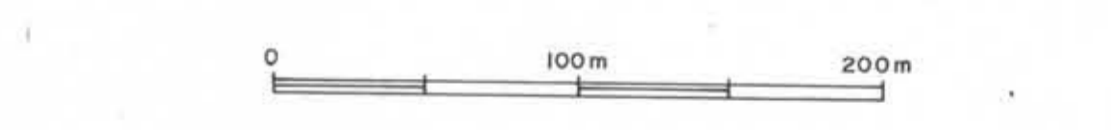
THRESHOLD

Au	20ppb	0.4 ppm	Cu	100 ppm	Zn	200ppm
----	-------	---------	----	---------	----	--------

CONTOUR SYMBOLS

20Au	0.4Ag	100Cu	200Zn
------	-------	-------	-------

N Soil geochemical anomaly discussed in text

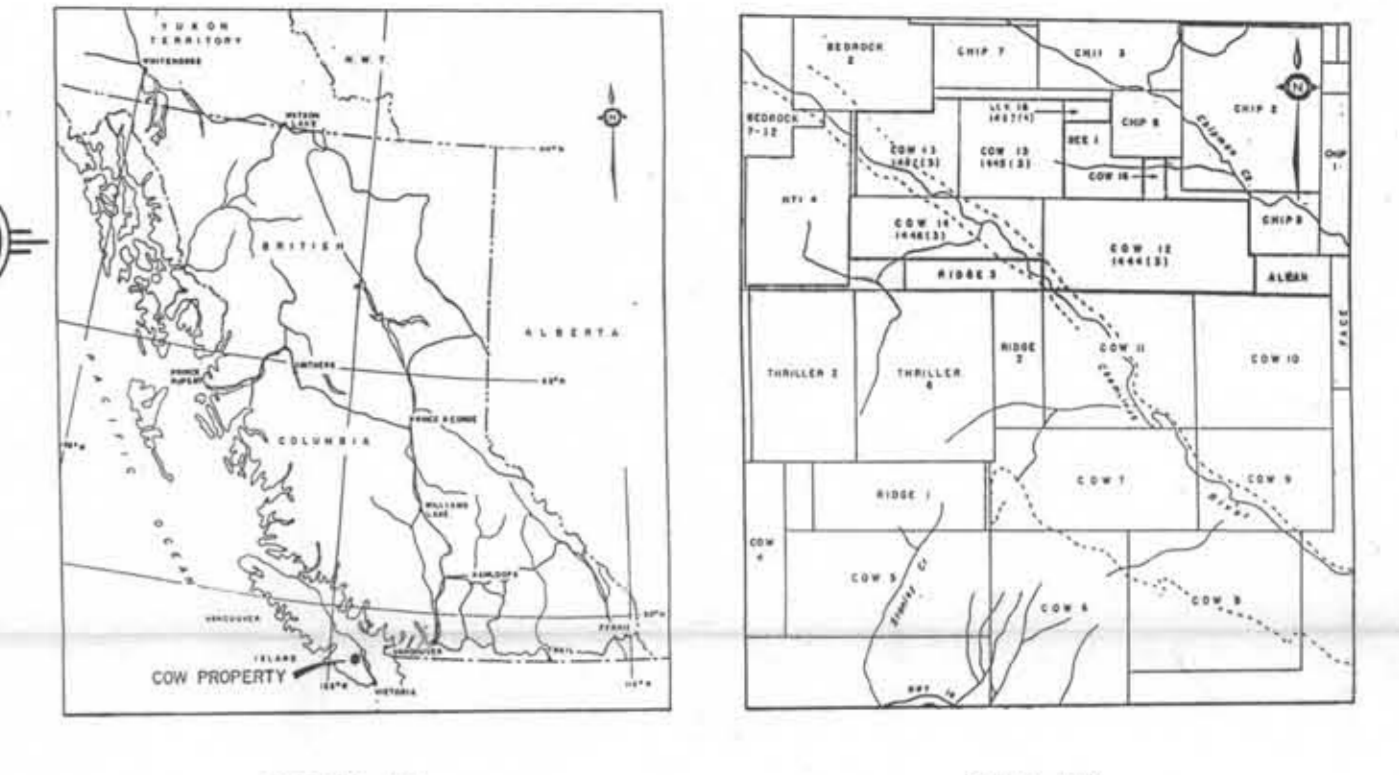
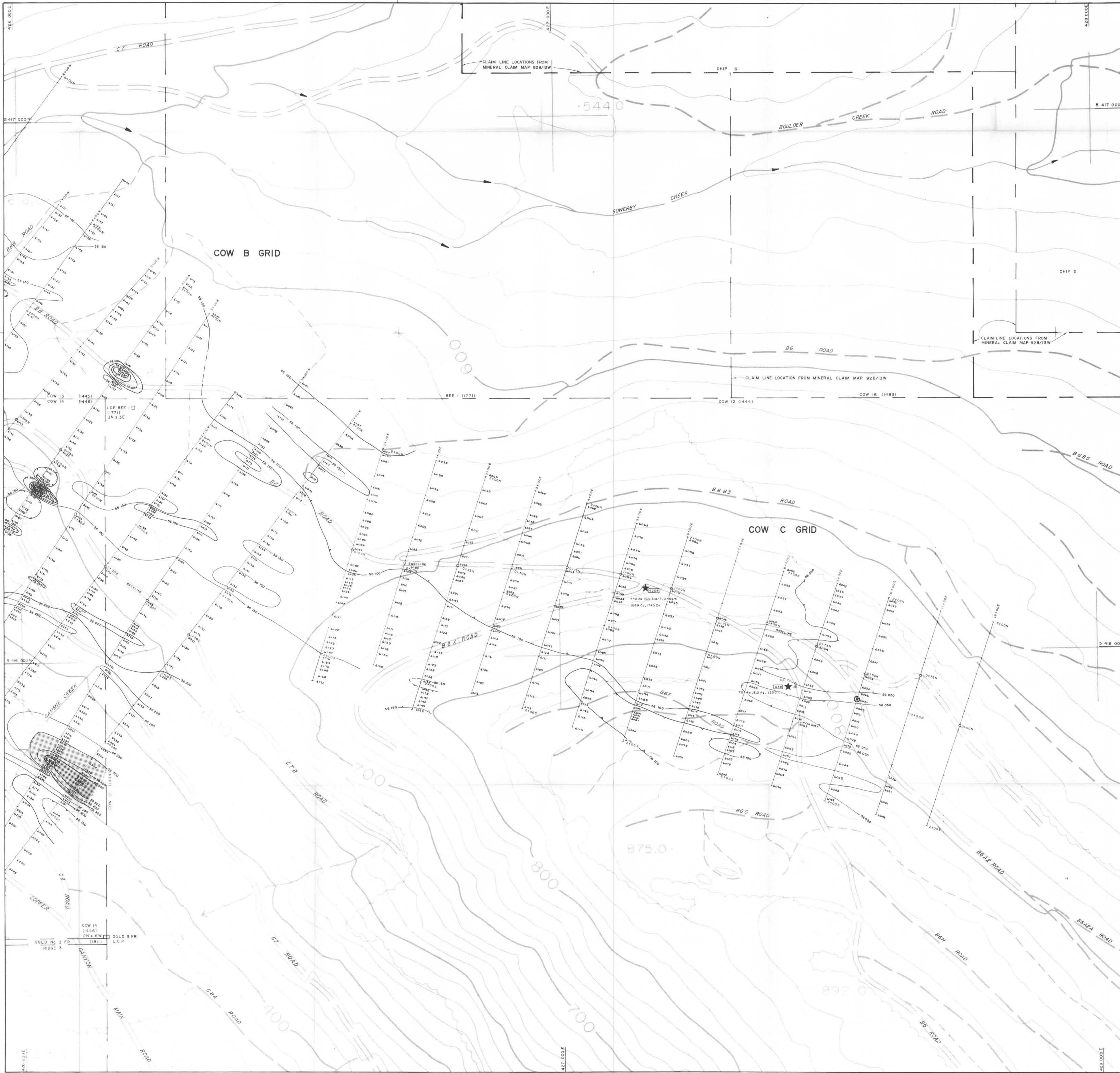


20m TOPOGRAPHIC CONTOUR INTERVAL.  
CLAIM LINES FROM L.C.P.'s LOCATED IN FIELD UNLESS OTHERWISE INDICATED.

**PART 3 OF 3**  
**GEOLOGICAL BRANCH**  
**ASSESSMENT REPORT**  
**16,097**

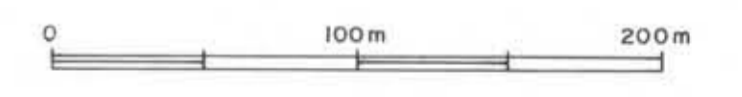
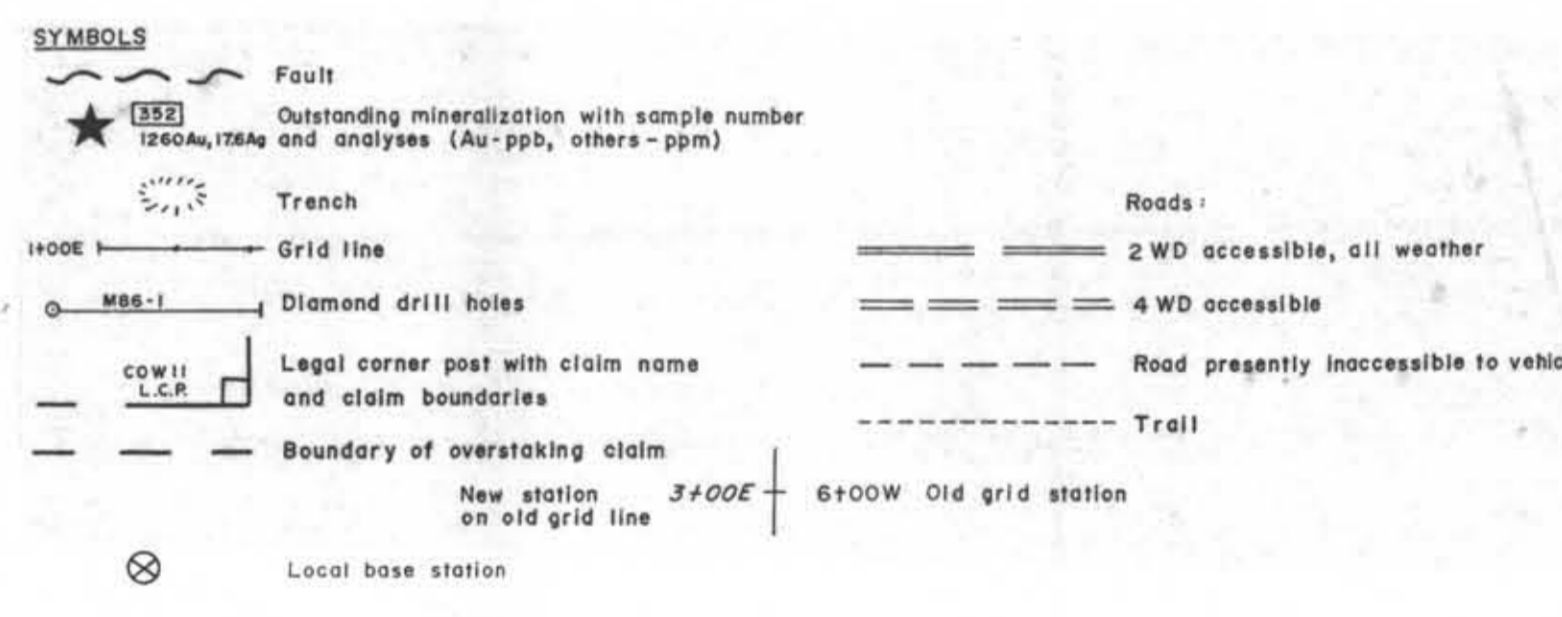
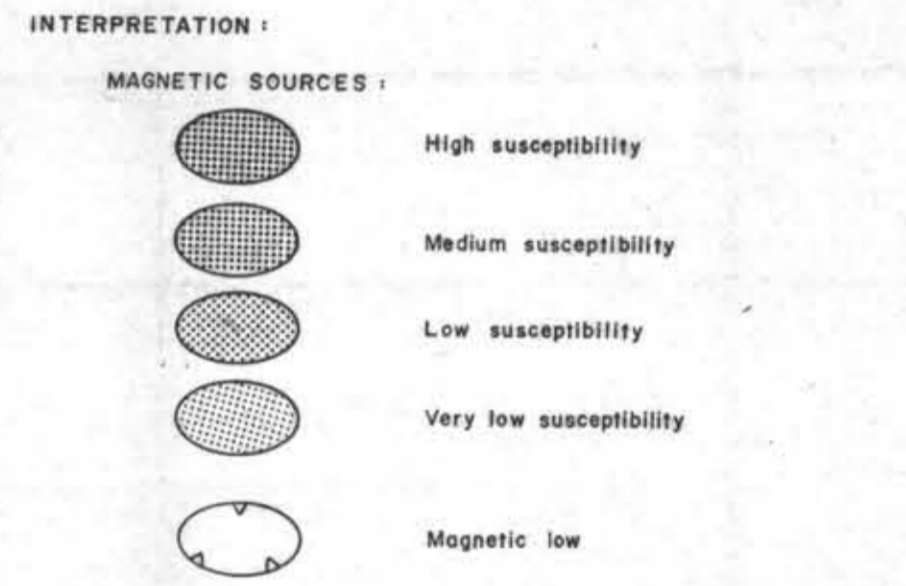
INTERNATIONAL CHEROKEE DEVELOPMENTS LIMITED	
SOIL GEOCHEMISTRY Au (ppb), Ag (ppm), Cu (ppm), Zn (ppm) B (EAST HALF) AND C GRIDS COW PROPERTY VICTORIA MINING DIVISION	
Project No: V 240	By: G.A.
Scale: 1:2500	Drawn: M.W.
Drawing No: BC-5	Date: FEBRUARY 1987
<b>MPH Consulting Limited</b>	





**LEGEND**

INSTRUMENT : SCINTREX MP-2  
 PARAMETER : TOTAL MAGNETIC FIELD (nT) (1nT = 1V)  
 (N.B. : 50 000 nT SUBTRACTED FROM READINGS)



20m TOPOGRAPHIC CONTOUR INTERVAL.  
 CLAIM LINES FROM L.C.P.'S LOCATED IN FIELD  
 UNLESS OTHERWISE INDICATED.

**PART 3 OF 3**  
**GEOLOGICAL BRANCH**  
**ASSESSMENT REPORT**  
**16,097**

*David Allen*

INTERNATIONAL CHEROKEE DEVELOPMENTS LIMITED

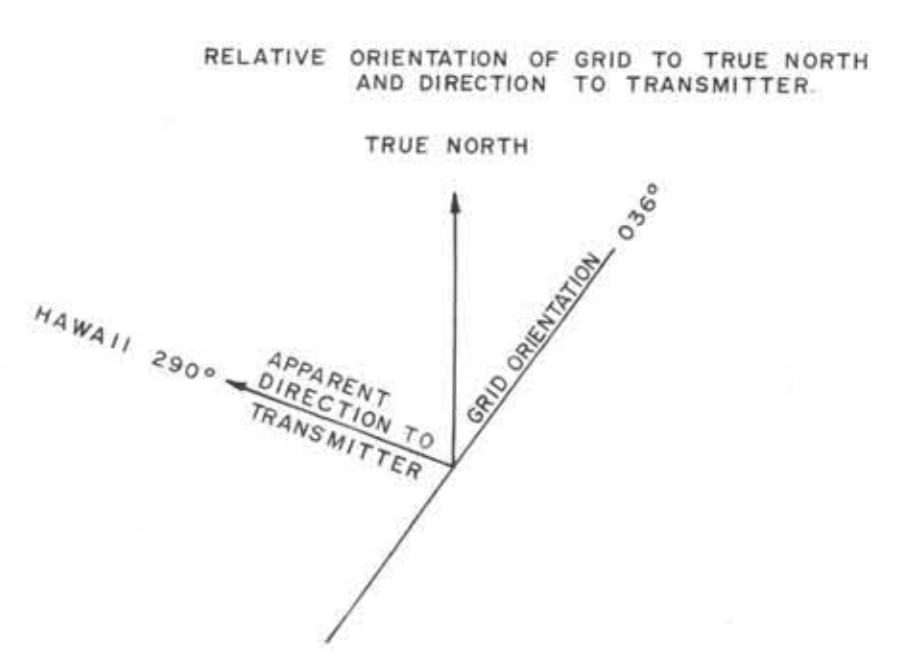
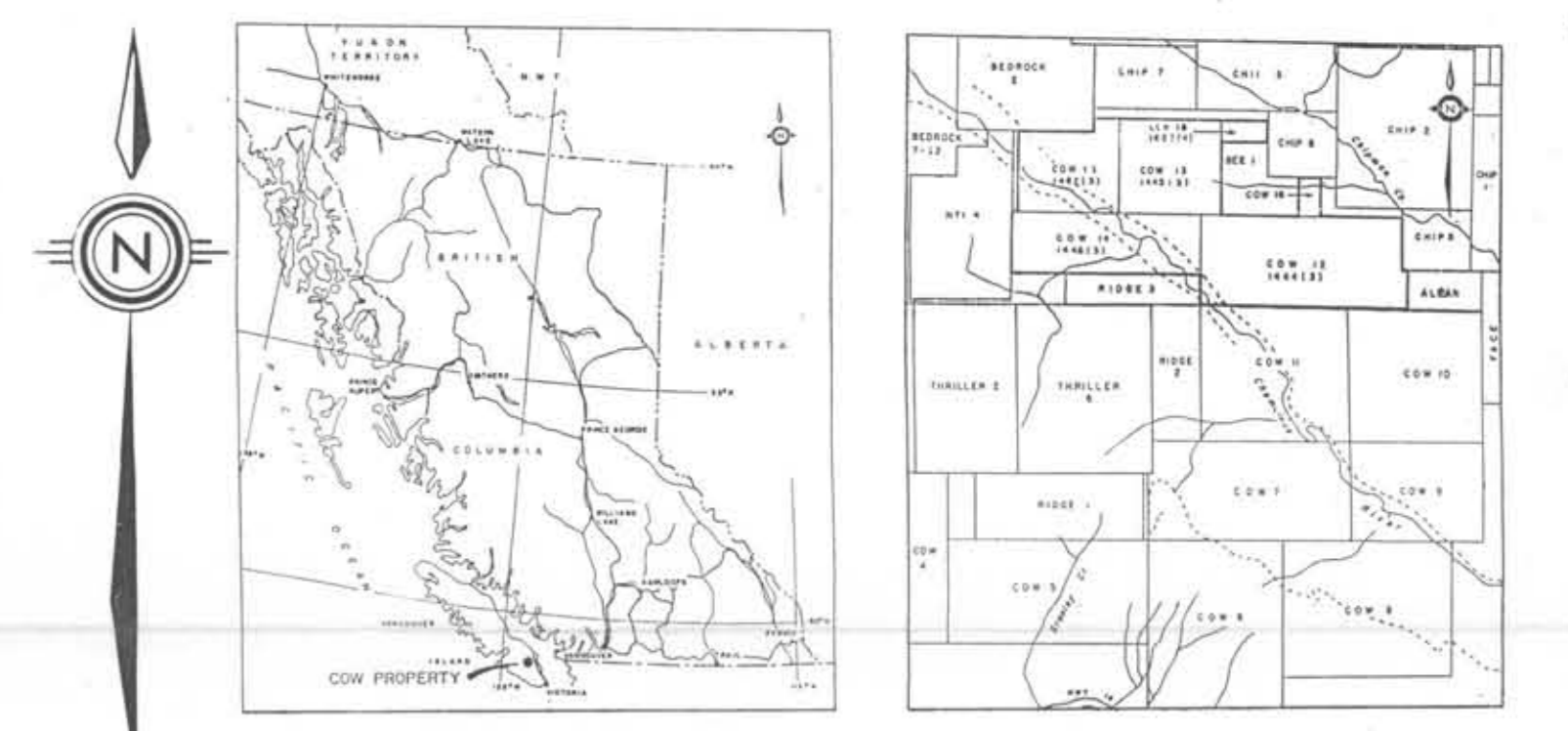
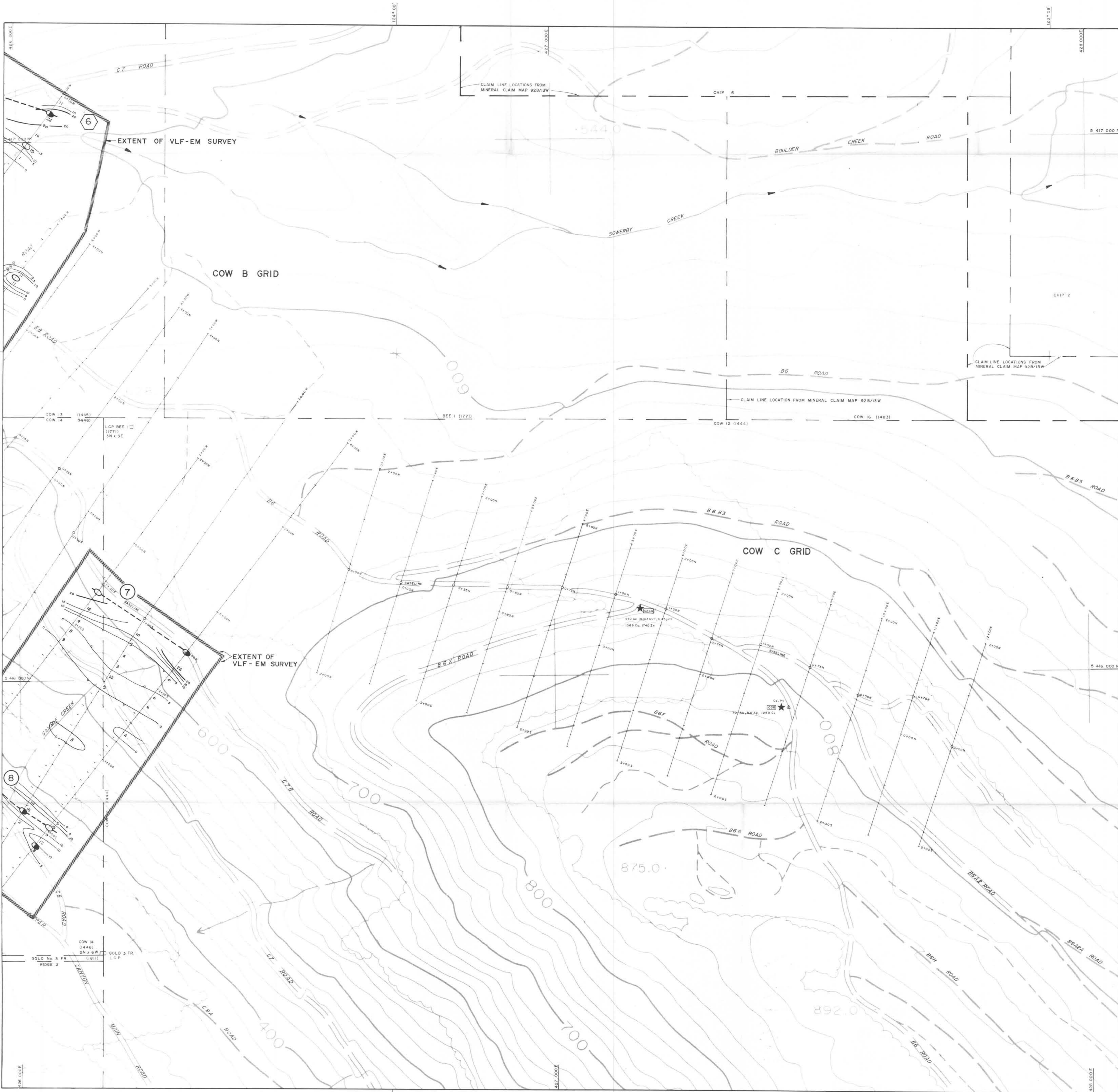
**MAGNETIC SURVEY**  
 B (EAST HALF) AND C GRIDS  
 COW PROPERTY

VICTORIA MINING DIVISION

Project No: V 240 By: G.A., J.P.S., J.R.  
 Scale: 1:2500 Drawn: M.W.  
 Drawing No: BC-6 Date: FEBRUARY 1987

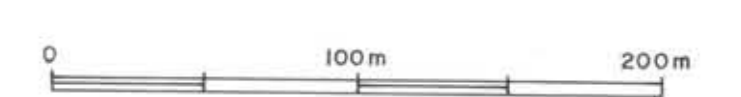
**MPH Consulting Limited**





- LEGEND**
- GRID LINE  
 Negative Fraser Filtered Dip Angle -  
 4 Positive Fraser Filtered Dip Angle
- PROFILES:**
- Horizontal Field Strength (in percent)
  - Dip Angle (in degrees)
  - Fraser Filtered Dip Angle
- INTERPRETATION:**
- Conductors:
- Strong - Definite
  - Moderate - Probable
  - Weak - Possible
  - Contact
  - Cultural - Cables, power lines, etc.
- Conductive Zones:
- Probable Bedrock Conductor
  - Other
- Conductor Continuity:
- Definite
  - Probable
  - Possible
- INSTRUMENT** - Sabre 27 VLF-EM Receiver

- SYMBOLS**
- Fault
  - Outstanding mineralization with sample number (see 1744) and analyses (Au-ppm, others-gpm)
  - Trench
  - Grid line
  - Diamond drill holes
  - Legal corner post with claim name and claim boundaries
  - Boundary of overstacking claim
  - New station on old grid line
  - Roads: 2 WD accessible, all weather; 4 WD accessible
  - Road presently inaccessible to vehicles
  - Trail
  - Old grid station



20m TOPOGRAPHIC CONTOUR INTERVAL.  
 CLAIM LINES FROM L.C.P.'s LOCATED IN FIELD UNLESS OTHERWISE INDICATED.

**PART 3 OF 3**  
**GEOLOGICAL BRANCH**  
**ASSESSMENT REPORT**  
**16,097**

*London J. Allen*

INTERNATIONAL CHEROKEE DEVELOPMENTS LIMITED

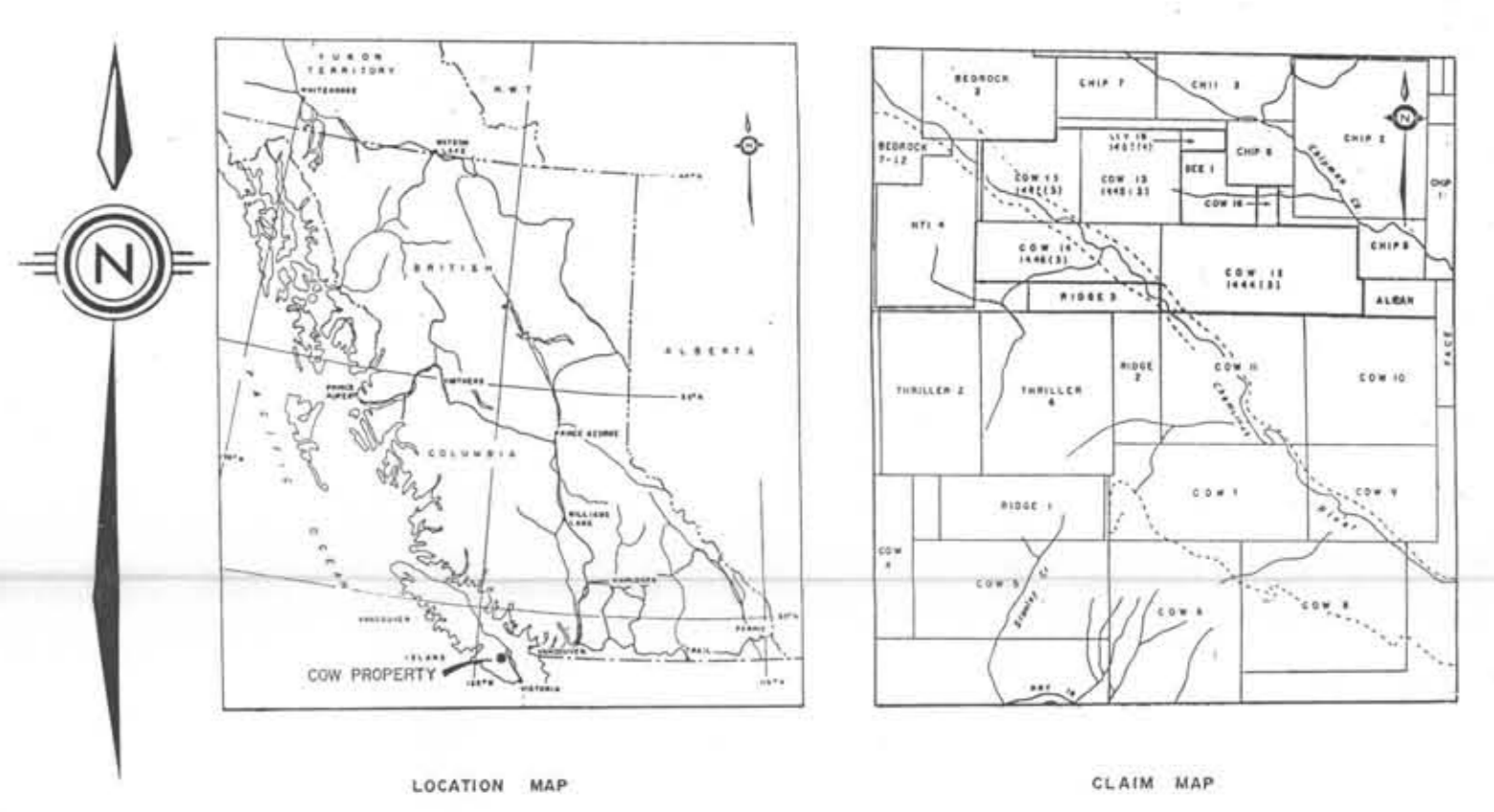
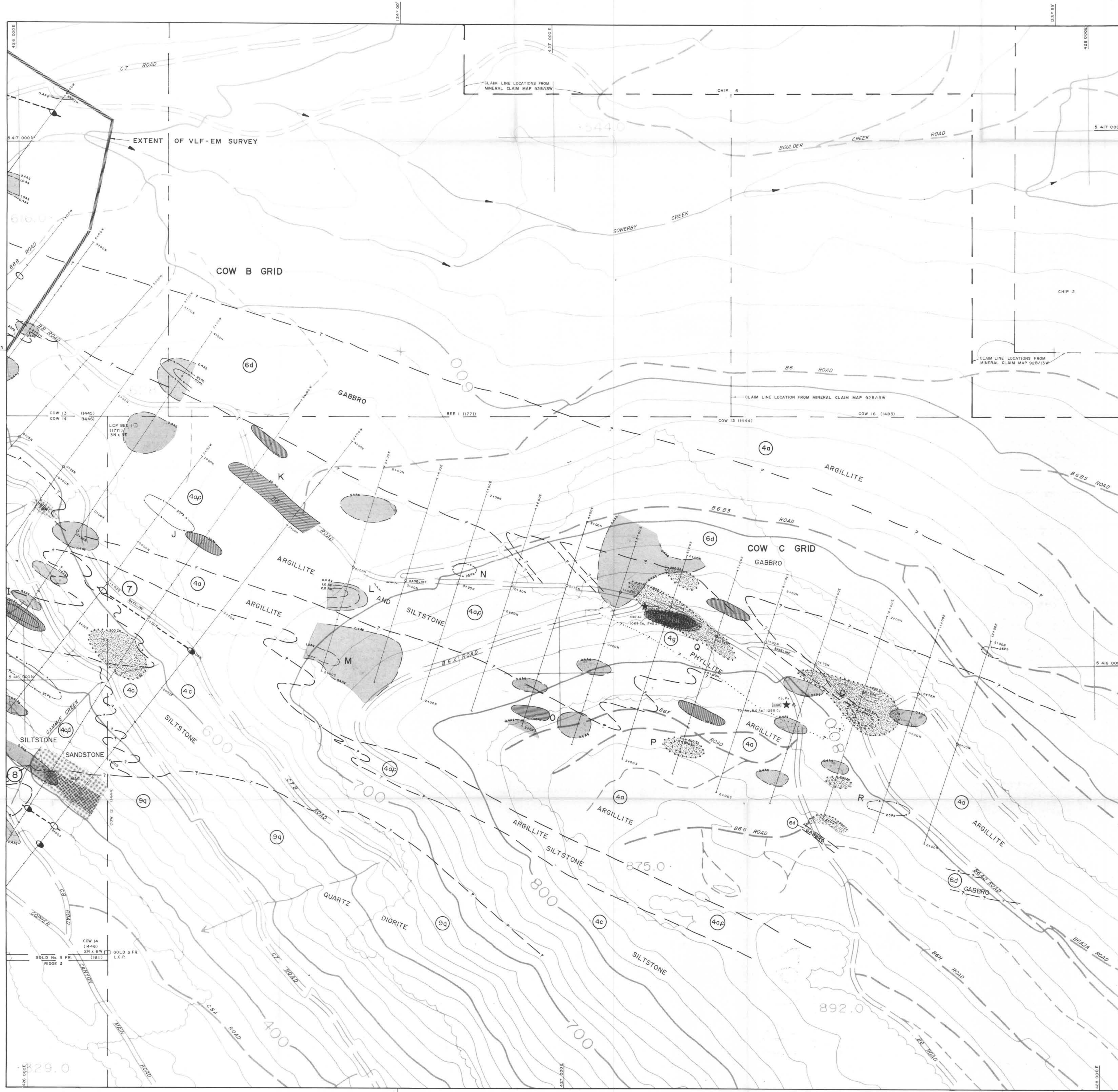
VLF - EM SURVEY  
 FRASER FILTERED DIP ANGLES  
 B (EAST HALF) AND C GRIDS  
 COW PROPERTY

VICTORIA MINING DIVISION

Project No: V 240	By: G.A., H.M.
Scale: 1:2500	Drawn: M.W.
Drawing No: BC-7	Date: FEBRUARY 1987

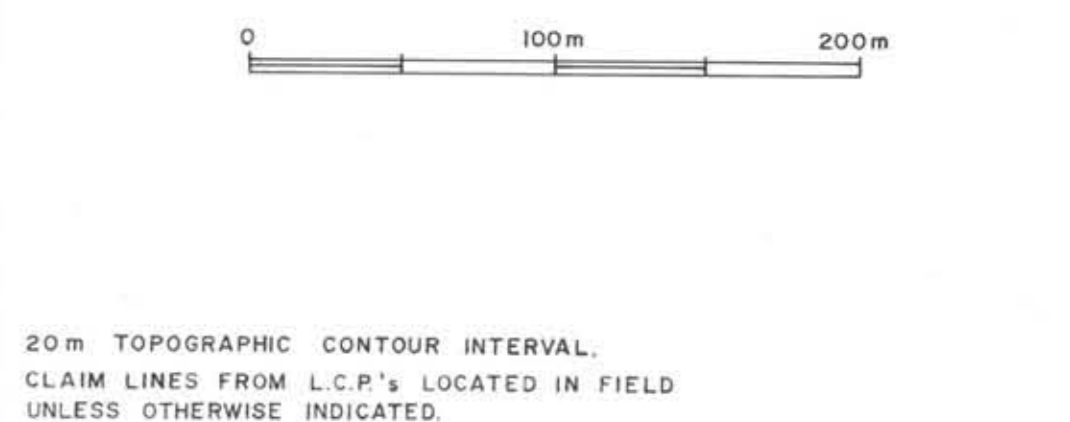
**MPH** MPH Consulting Limited





- LEGEND**
- GEOLOGY**  
 MESOZOIC  
 JURASSIC - 3 quartz dioritic intrusives  
 TRIASSIC - 6 gabbroic intrusives  
 PALEOZOIC SICKER GROUP  
 - 4 Cameron River Formation Sediments  
 - 2 McLaughlin Ridge Formation Pyroclastics  
 - 1 Winton Formation Basic Volcanics
- SYMBOLS**  
 Geological Contact  
 Fold Axis  
 Fault  
 ANOMALOUS ROCK SAMPLES  
 Bedrock  
 Floor  
 Analyses as indicated
- SOIL GEOCHEMICAL ANOMALIES**  
 Au (ppb)  
 Ag (ppm)  
 As (ppm)  
 Cu (ppm)  
 Pb (ppm)  
 Zn (ppm)
- BIOCHEMICAL ANOMALIES**  
 Au (ppb) in conifer branch samples (Douglas Fir and Western Hemlock)
- GEOPHYSICAL ANOMALIES**  
 Magnetic Survey  
 Magnetic source  
 Magnetic domain  
 Magnetic domain boundary  
 VLF-EM Survey  
 Conductors: weak, moderate, strong  
 Conductive zones:  
 Probable bedrock  
 Other  
 Conductor continuity:  
 Definite  
 Probable  
 Possible

- NOTE: NOT ALL SURVEYS NECESSARILY CONDUCTED ON EACH PROPERTY.
- SYMBOLS**  
 Fault  
 Outstanding mineralization with sample number  
 Trench  
 Grid line  
 Diamond drill holes  
 Legal corner post with claim name and claim boundaries  
 Boundary of oversteaking claim  
 New station on old grid line  
 Soil geochemical anomaly discussed in text
- Roads:**  
 2 WD accessible, all weather  
 4 WD accessible  
 Road presently inaccessible to vehicles  
 Trolly
- 3700E 6700W Old grid station



PART 3 OF 3  
 GEOLOGICAL BRANCH  
 ASSESSMENT REPORT  
 16,097

INTERNATIONAL CHEROKEE DEVELOPMENTS LIMITED

GEOLOGY, GEOCHEMISTRY AND GEOPHYSICS COMPOSITE

B (EAST HALF) AND C GRIDS  
 COW PROPERTY  
 VICTORIA MINING DIVISION

Project No: V 240 By: G.A.  
 Scale: 1:2500 Drawn: M.W.  
 Drawing No: BC-B Date: FEBRUARY 1987

MPH Consulting Limited