

87-377-16131

ASSESSMENT REPORT OF PHANTOM CLAIMS GROUP
FOR MINISTRY OF MINES AND PETROLEUM RESOURCES

VANCOUVER MINING DISTRICT DIVISION

M 926/14W 49°52' 123°29.5'

CLAIM OWNERS - SID C. JOHNSON, *Clawhom Mining & Exploration Ltd.*

OPERATORS - ~~PHANTOM GROUP~~ *Clawhom Mining & Exploration Ltd.*
John Hilton

BY D. M. O'NEILL B.Sc (Geol.)

MARCH 20, 1987

RECEIVED
JUL 6 1987
Gold Commissioner's Office
VANCOUVER, B.C.

**GEOLOGICAL BRANCH
ASSESSMENT REPORT**

FILMED

16,131

D.M. O'Neill

TABLE OF CONTENTS

1.0	Introduction	1
2.0	Location and Access	1
3.0	Claim Information	4
4.0	History and Previous Work	4
5.0	Work Program and Results	6
6.0	Itemized Cost Statement	14
7.0	Certificate	15

Figures

2-1	Location Map	2
2-2	Topographic Map	3
3-1	Claim Map	5
5-1	Drill Core Log Hole #1	8,9
5-2	Drill Core Log Hole #2	10,11
5-3	Geochemical Assay Results	12
5-4	I.C.P. Results	13

1.0 INTRODUCTION

The Phantom Mineral Claims Group is located in the Vancouver Mining District, (Lat. 49 51.5', Long. 123 29.5'). The claims are owned by Sid C. Johnson and operated by the Phantom Group. This report is based on an examination of the 1986 drill core as well as the 1982 drill core and assessment report by R. Wolfe P. Eng.

The drilling program in 1986 was undertaken to explore the potential and extent of mineralization indicated by the previous (1982) drill program Au assay results. (.018 oz/ton and .011 oz/ton)

A total of 867 feet (264 m) was drilled, logged and sampled. Four samples were analyzed from Hole #2. Trace values of Au were found and Ag values ranged from .03 to .09 oz/ton. Further work should include a geological and geochemical survey and if feasible, a geophysical, survey to determine potential amount of mineralization and to delineate potential targets.

2.0 LOCATION AND ACCESS

The Phantom Mineral Claims Group is located near Phantom Lake and Clowhom River, in The Vancouver Mining District. The closest major town is Squamish, B.C., which

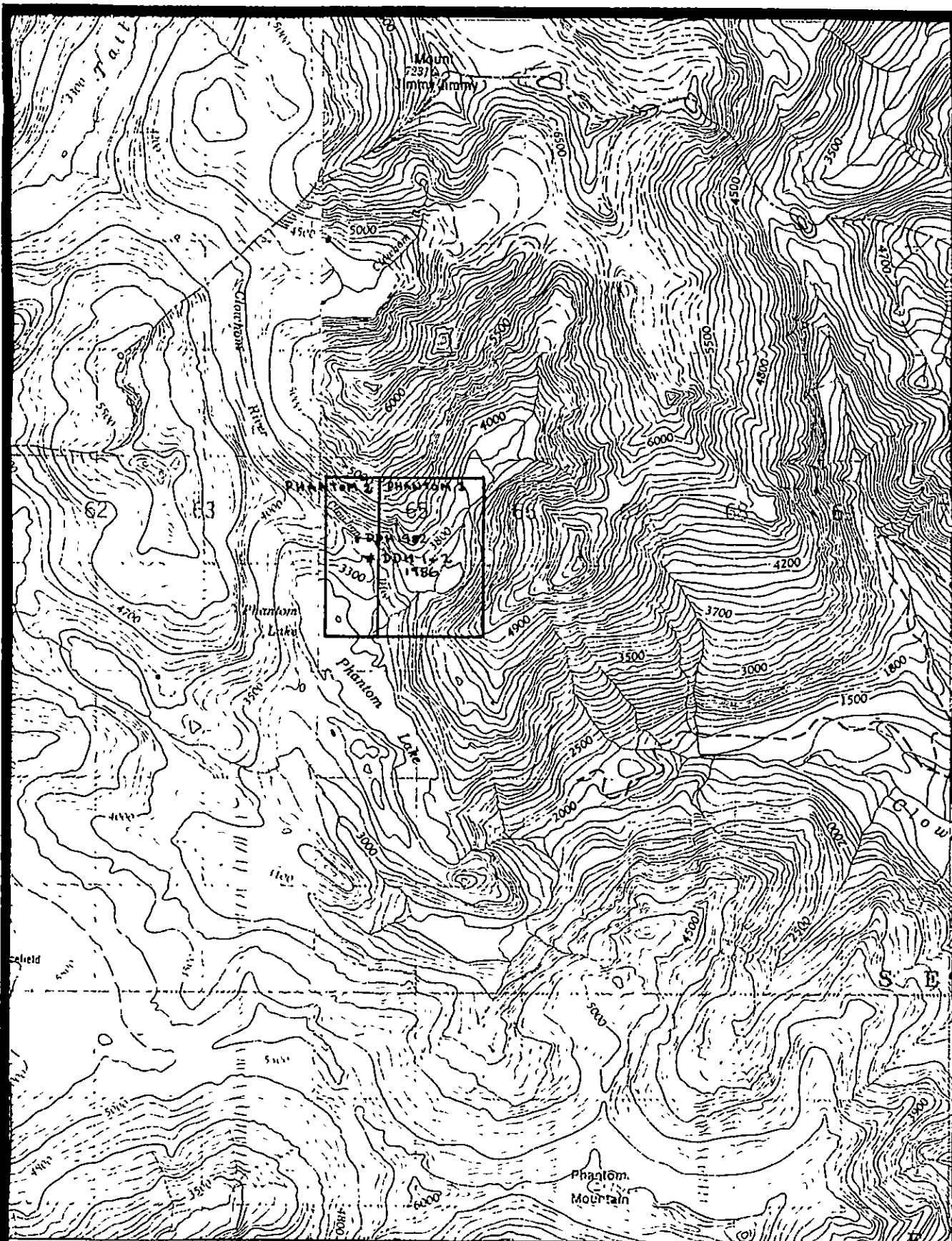


LOCATION MAP Fig. 2 - 1

From ENERGY, MINES AND RESOURCES 92 SE

PHANTOM GROUP

1:500,000 March 20, 1987



TOPOGRAPHIC MAP Fig. 2 - 2

From: ENERGY, MINES AND RESOURCES 92G13/14

PHANTOM GROUP

1:150,000 MARCH 20, 1987

is located 30.4 km to the southeast of the claims. Access to the property is by helicopter or float plane. See Figures 2-1, 2-2.

Latitude 49 51.5'
Longitude 123 29.5'
Elevation 3200 - 5000 ft. (922 - 1440 m)
N.T.S. 92G/14W

3.0 CLAIM INFORMATION

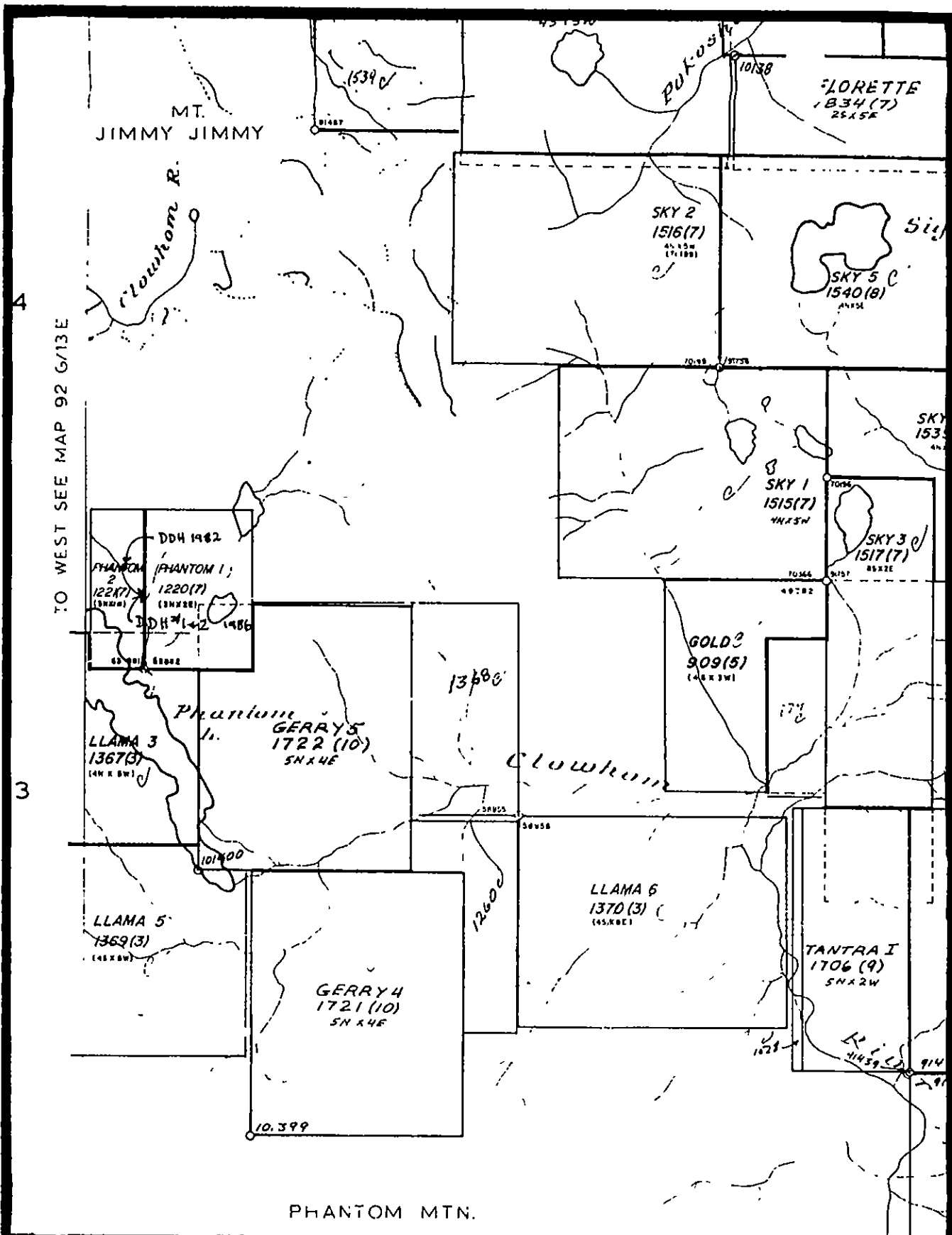
The Phantom Mineral Claims Group covers nine units. The claims are currently owned by Sidney C. Johnson and are operated by the Phantom Group. See Figure 3-1.

CLAIM INFORMATION

NAME	RECORD NUMBER	EXPIRY DATE
PHANTOM 1	1220	July 21, 1987
PHANTOM 2	1221	July 21, 1987

4.0 HISTORY AND PREVIOUS WORK

Previous work on the property, with the Phantom Group as operator, consisted of preliminary prospecting of the claims, the eastern shore of Phantom Lake and the drainages of the two creeks crossing the property from the northwest and northeast. The prospecting was followed by two AX diamond drill holes totalling 45.4 meters. These were drilled, logged, and sampled



CLAIM MAP Fig. 3 - 1

MINISTRY CLAIMS INDEX MAP 92G/14W

PHANTOM GROUP

1"=1/2 MILE MARCH 20, 1987

in October 1982. The assay report showed the presence of Au, results were .011 and .018 Au oz/ton over five foot sections. Drill sites are located on Figure 3-1.

No geological, geochemical, or geophysical surveys have been carried out. No history or work record prior to October 1982 is available for the property.

5.0 WORK PROGRAM AND RESULTS

The purpose of the drill program was to explore the potential and extent of mineralization indicated by the Au assay results from the 1982 diamond drilling. Two NQ diamond drill holes were completed on the Phantom claim #2 in October of 1986, and totaled 869 feet (265 m). The sites were chosen by S. Johnson. Figure 3-1 shows the location of the drill collar in relation to the claim boundaries, previous drill sites, and surface features.

Diamond drill hole #1 has an inclination of -60 towards 270 , with a total depth of 412 feet (125.6 m). Hole #2, at the same site, has an inclination of -72 towards 270 , with a total depth of 457 feet (139.3 m). The collar elevation is 3300 feet (1004 m) above sea level. The core recovered from drill holes #1 and #2 was logged by D. M. O'Neill, B.Sc. (Geology). The drill logs are included in this report. See

Figures 5-1 and 5-2. The location of the core is 24745 - 102nd Avenue, Whonnock, B.C., V0M 1S0.

The rock is an altered andesite, which has been subject to some chloritization and portions have undergone a higher grade of metamorphism as indicated by the presence of garnet. Small quartz filled fractures are present and a small granitic dyke. Mineralization is found in minor amounts in small fractures and/or disseminated. Mineralization includes pyrite, calcopyrite, pyrrhotite, and very minor amount of arsenopyrite.

Drill core samples from Hole #2 were analyzed by Min-En Laboratories in North Vancouver. Four samples were geochemically analyzed for Au, Pt, Pd by Fire and 9 element I.C.P. (Ag, As, Cu, Fe, Mo, Ni, Pb, Sb, Zn). Analytical results are included, see Figures 5-3 and 5-4. Trace values of Au were obtained. Results show a range of Ag values from .03 oz/ton to .09 oz/ton.

Samples taken from Hole #2 are as follows:

-
176.8 - 181.8 feet
349.5 - 354.5 feet
368.0 - 375.0 feet
387.0 - 392.0 feet

1 Foot = 0.3048 metres

DIAMOND DRILL RECORD		PROPERTY Phantom Group	HOLE NO. 1
Date Begun		Date Finished	Dip -60° Bearing 270°
Total Depth		Core Size NQ	Logged By D.M.O'Neill B.Sc(Geol) Sheet 1
DEPTH	DESCRIPTION	SAMPLE	NAME
			D.M.O'Neill
0-24 ft	over burden Altered andesite chloritization and more intense metamorphism indicated by the presence of garnets Mineralization consists of pyrite, chalcopyrite, pyrrhotite and arsenopyrite, (py, cpy, pyr and arpy respectively)		
24-100 ft	blocky, sugary texture, garnetiferous to 80' garnets \leq 1mm in diam. 79' small fracture slickensides 100' calcite in fractures no mineralization min. cpy found in section, rusty staining btwn 27 and 37 feet.		
100-200 ft	more broken and more veinlets present 130' qtz - calcite veinlet 20° to core 135' qtz - calcite veinlet 20° to core min cpy pyrrhotite (pyrr.) 136' 0.8cm wide veinlet min py, cpy, pyr 146' minor veinlets 2 // < 3mm wide U min py arsenopyrite 165' qtz veinlet 7mm wide weathered py blocky from 177 no visible mineralization, dark finer grained		
200-250 ft	blocky, & 215' qtz veinlet 4-6mm width ~ 30 cm long min cpy, pyr 236.5' - 246.5' dyke is min pyrite found along fracture within dyke		

DIAMOND DRILL RECORD		PROPERTY Phantom Group	HOLE NO. 2
Date Begun		Date Finished	Dip - 72° Bearing 270°
Total Depth		Core Size NQ	Logged By D.M. O'Neill B.Sc. Geol Sheet 1
DEPTH	DESCRIPTION	SAMPLE	4 SAMPLES.
0 - 17 ft	overburden		D.M. O'Neill
	Same as Hole # 1 - Altered andesite chloritized garnets in portions. Mineralization consists of pyrite, chalcopyrite, pyrrhotite and arsenopyrite.		
17 - 125 ft	22' min py along fracture 39'-42' broken core min py 30' fracture gouge min py 87'-97' mostly broken to rubble 115' 2.5cm wide flow into bands.		
125 - 150'	126' qtz veinlet 25° to core 2.5 cm wide Fe stain, no visible mineralization. 136' - 146' dyke (qtz diorite) 150' broken rubble.		
	176 - 184, 193, 195' min cpy + pyrr found in small fractures, py in blebs.	5' SAMPLE FROM 176.8' TO 181.8	
	215 cpy + pyrr in small fracture, not extensive 243 py + cpy		
250 - 300ft	267' gouge then min py, cpy pyrr and arsenopy at 268' 289 minor calcite vein at 10° to core becoming more chloritized 296' cal. in fract 2mm at 35°		
300 - 320ft	colour change greenish to purple blocky, better coring.		

DIAMOND DRILL RECORD		PROPERTY PHANTOM GROUP	HOLE NO. 2
Date Begun		Date Finished	Dip - 72° Bearing 270°
Total Depth		Core Size Na	Logged By D.M. O'Neill B.Sc. (Geol) Sheet 2
DEPTH	DESCRIPTION	SAMPLE	N
320 - 355 ft	340' less blocky calcite in fractures w/min py		
	347.5 fault gouge 3 cm epidotized		
	350.3 qtz cal vein at 30° to core 6 cm wide	Sample 5' From 349.5 to 354.5	
	w/ min py. 351.5 qtz veinlet chlorite min py 1.5 cm		
	352 min py in host rock (Sample less fractured than btwn 340-348')		
355 - 375 ft	368-375' cpy + py v minor arsenopyrite in	Sample 7' From 368' to 375'	
	mottled alt andesite cpy + py dissem. blebs		
	arsenopy along veinlets (v minor)		
375 - 395	387' to 392' silicious min py, cpy with	Sample 5' From 387' to 392'	
	biotite present		
395 - end	403' veinlet 1 cm wide at 10° to core min cpy pyr		
	core is broken chloritized purple hue occ. fracture		
	433 beginning of visible garnets 437 py in fracture chlorite calcite gouge		
	438 rubble		
	443 garnetiferous still and continues to end		
	blockier		

D. M. O'Neill

MIN-EN LABORATORIES LTD.

Specialists in Mineral Environments

705 West 15th Street North Vancouver, B.C. Canada V7M 1T2

PHONE: (604)980-5814 OR (604)980-4524

TELEX: VIA USA 7601067 UC

Certificate of GEOCHEM

Company: D. O'NEILL

File: 7-130

Project:

Date: FEB 25/87

Attention: D. O'NEILL

Type: ROCK GEOCHEM

We hereby certify the following results for samples submitted.

Sample Number	AU-FIRE PPM	PT-FIRE PPM	PD-FIRE PPM
H2-176.0-101.8	75	15	9
H2-349.5-354.5	18	6	7
H2-368-375	16	11	5
H3-387-392	11	2	1

Certified by MIN-EN LABORATORIES LTD.

COMPANY: D. O'NEILL

MJN-EN LABS ICP REPORT

(ACT:6E027) PAGE 1 OF 1

PROJECT NO:

705 WEST 15TH ST., NORTH VANCOUVER, B.C. V7M 1T2

FILE NO: 7-130

ATTENTION: D.O'NEILL

(604)980-5814 OR (604)980-4524

* TYPE ROCK GEOCHEM *

DATE: FEB 27, 1987

(VALUES IN PPM)	AG	AS	CU	FE	MO	NI	PB	SR	ZN
H2-176.8-181.8	2.8	11	63	215320	3	49	26	1	129
H2-349.5-354.5	1.0	6	49	135510	3	50	18	2	85
H2-368-375	1.1	7	99	181740	2	63	19	1	104
H2-387-392	1.0	7	69	158040	2	65	21	1	83

6.0 ITEMIZED COST STATEMENT

Work done on Phantom Group Claims in 1986

Two diamond drill holes with NQ size rod on Phantom Claim #2

Drill Hole #1 total depth of 125.57 meters

Drill Hole #2 total depth of 139.29 meters

COSTS

Air transportation	13,172.73
Car and truck transportation	905.58
Drilling expenses; bits, fuel, etc.	2,950.38
Drill repairs	773.33
Food	824.92
Camp supplies	232.66

TOTAL	\$ 18,859.60

WAGES WORKED FOR SHARES

	Number of days worked					Total
	July	Aug	Sep	Oct	Nov	
-----	-----	-----	-----	-----	-----	-----
Sid Johnson	3	4	20	11	1	39 days
Fred Legath	3	2	20			25 days
Ed Herman	3	4	10	7		24 days
Joe O'Neill	1	2			1	4 days
-----	-----	-----	-----	-----	-----	-----
						TOTAL 92 days

92 days at \$150.00 per day	\$13,800.00
Wages for Wayne Clark; Contract driller for Hole #2	1,371.00

TOTAL \$	15,171.00

TOTAL COST FOR 1986 DRILL PROGRAM

Supplies, transportation and repairs	18,859.60
Wages	15,171.00

TOTAL	\$ 34,030.60

7.0 CERTIFICATE

1. I, D. M. O'Neill, reside at 2625 West 2nd Ave. Vancouver, B.C.
2. I am a geologist, having received a B.Sc. Major Geology from the University of British Columbia in 1983, and have practiced my profession since that time.
3. I have no interest in the Phantom Mineral Claims, or the Phantom Claims Group which operates them, nor do I expect to receive any.
4. This report may be used wholly or in part, as long as the meaning is not altered.

D. M. O'Neill

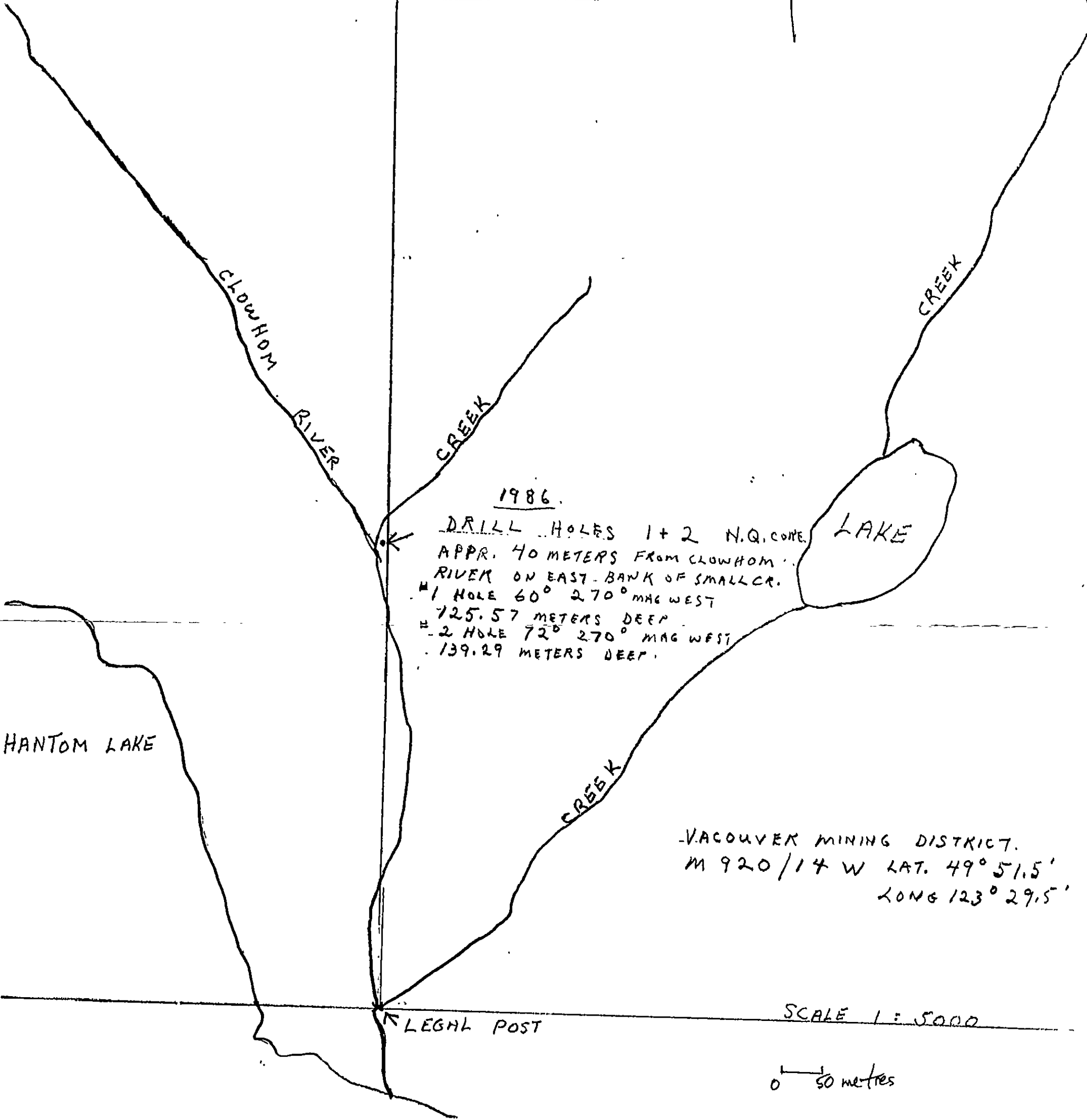
D. M. O'Neill
2625 W 2nd Ave.
Vancouver, B.C.
March 20, 1987

PHANTOM 2

PHANTOM 1



SMALL LAKE



1986

DRILL HOLES 1 + 2 N.Q. CORE
APPR. 40 METERS FROM CLOWHOM RIVER ON EAST BANK OF SMALL CR.
#1 HOLE 60° 270° MAG WEST
125.57 METERS DEEP
#2 HOLE 72° 270° MAG WEST
139.29 METERS DEEP.

LAKE

HANTOM LAKE

VACOUVER MINING DISTRICT.
M 920/14 W LAT. 49° 51.5'
LONG 123° 29.5'

SCALE 1:5000

0 50 metres

**GEOLOGICAL BRANCH
ASSESSMENT REPORT**

16,131