

87-609-16262  
7/88

1986 CUNNINGHAM CREEK PROPERTY REPORT

(NTS 93 A,H)

BRITISH COLUMBIA

VOLUME 2

**GEOLOGICAL BRANCH  
ASSESSMENT REPORT**

Part 2 of 3

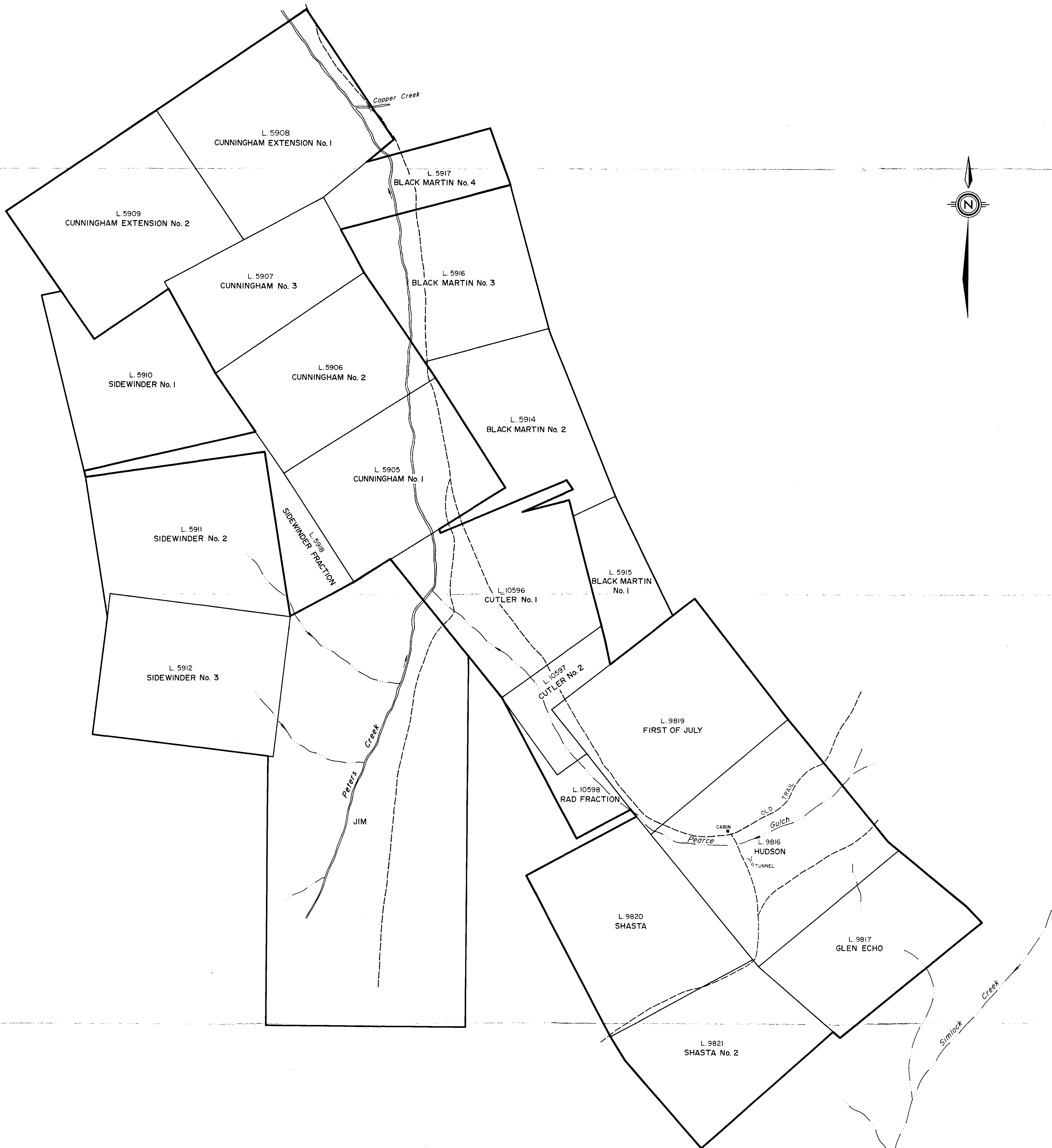
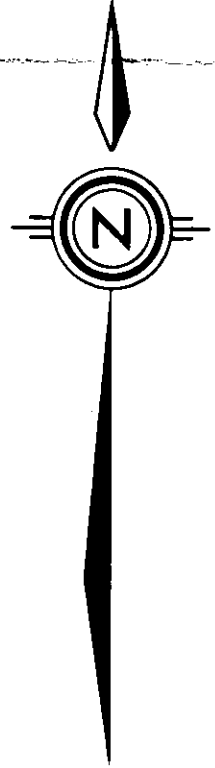
**16,262**

BY: PETER R. DELANCEY, P. ENG.

IMPERIAL METALS CORPORATION

JULY 1987

FILMED



GEOLOGICAL BRANCH  
ASSESSMENT REPORT  
Part 2 of 3

16,262

Feet 300 0 300 600 900 Feet

IMPERIAL METALS CORPORATION

CUNNINGHAM CREEK

FIGURE 3

N.T.S. 93A/14W

MINING LEASE 32 AND  
REV. CROWN GRANTS

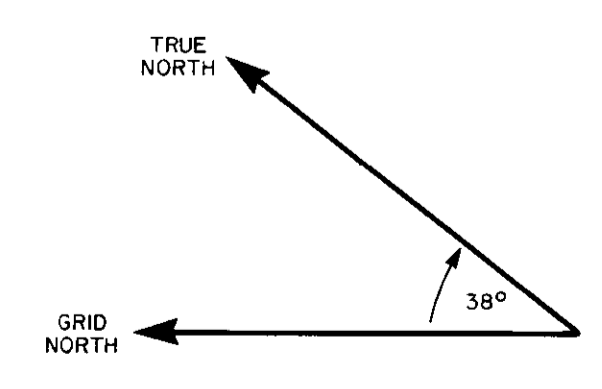
SCALE: 1" = 300' approx.  
DATE: APRIL, 1987

GEOLOGIST: PD, M.B.  
DRAWN BY: J. CORKUM



LEGEND

- ROAD
- APPROXIMATE QUARTZITE LIMESTONE CONTACT
- ASSUMED FAULT TRACE
- MINERALIZED QUARTZ VEIN
- REPLACEMENT TYPE MINERALIZATION
- PORTAL
- 1986 DRILL HOLE LOCATIONS
- LEGAL CORNER POST
- CROWN GRANT OUTSIDE BOUNDARY
- MINERAL CLAIM BOUNDARY
- CAMP LOCATION



GEOLOGICAL BRANCH  
ASSESSMENT REPORT  
Part 2 of 3  
**16,262**

IMPERIAL METALS CORPORATION  
CUNNINGHAM CREEK

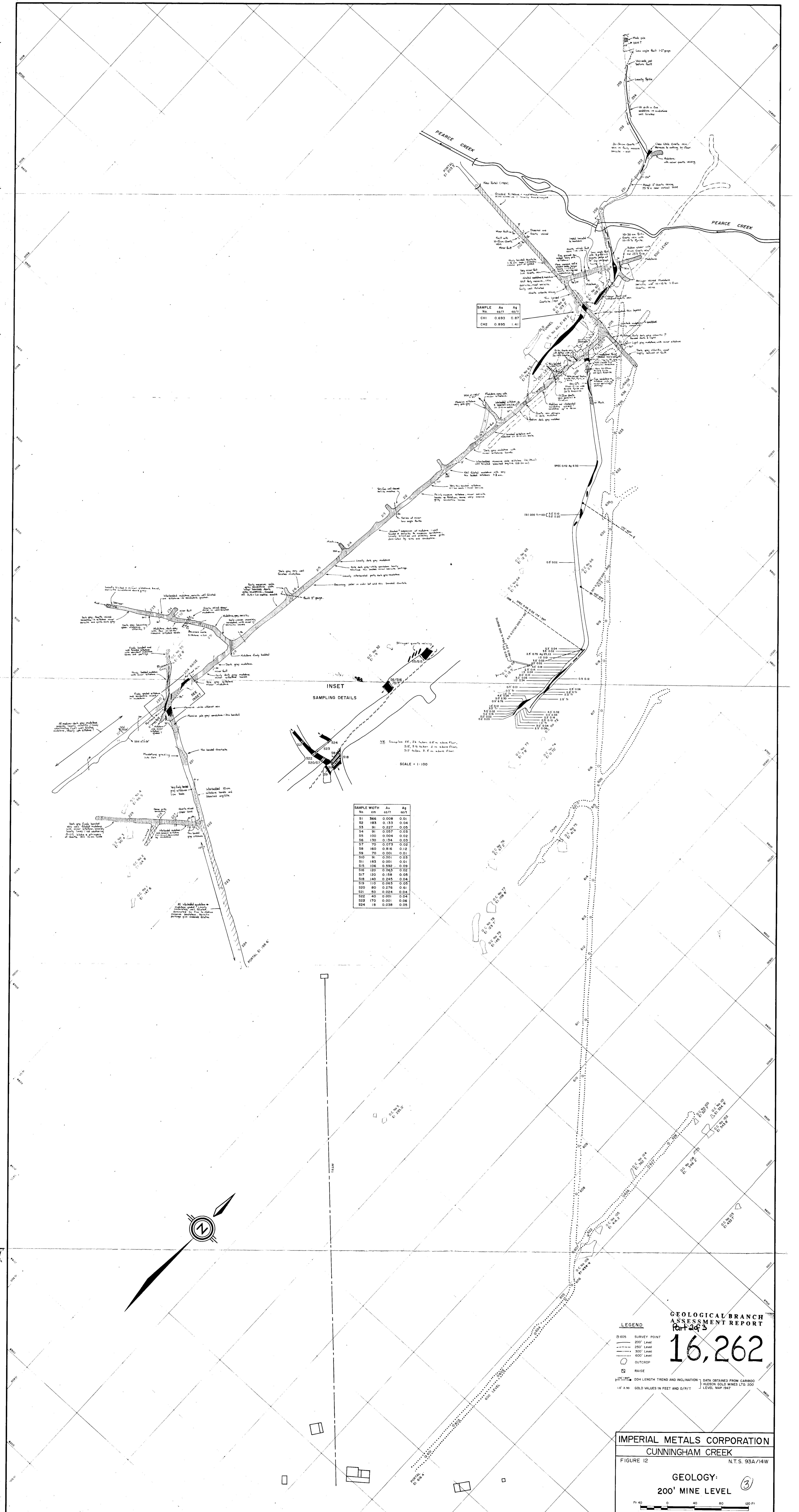
FIGURE 10 N.T.S. 93A/14W

②

ORTHOPHOTO SUMMARY MAP

Metres 100 0 100 200 300 400 Metres

SCALE: 1:5000	GEOLOGIST: P.D., M.B.
DATE: JUNE, 1987	DRAWN BY: J. CORKUM



SAMPLE	Au	Ag
CHI	0.693	0.87
CH2	0.895	1.41

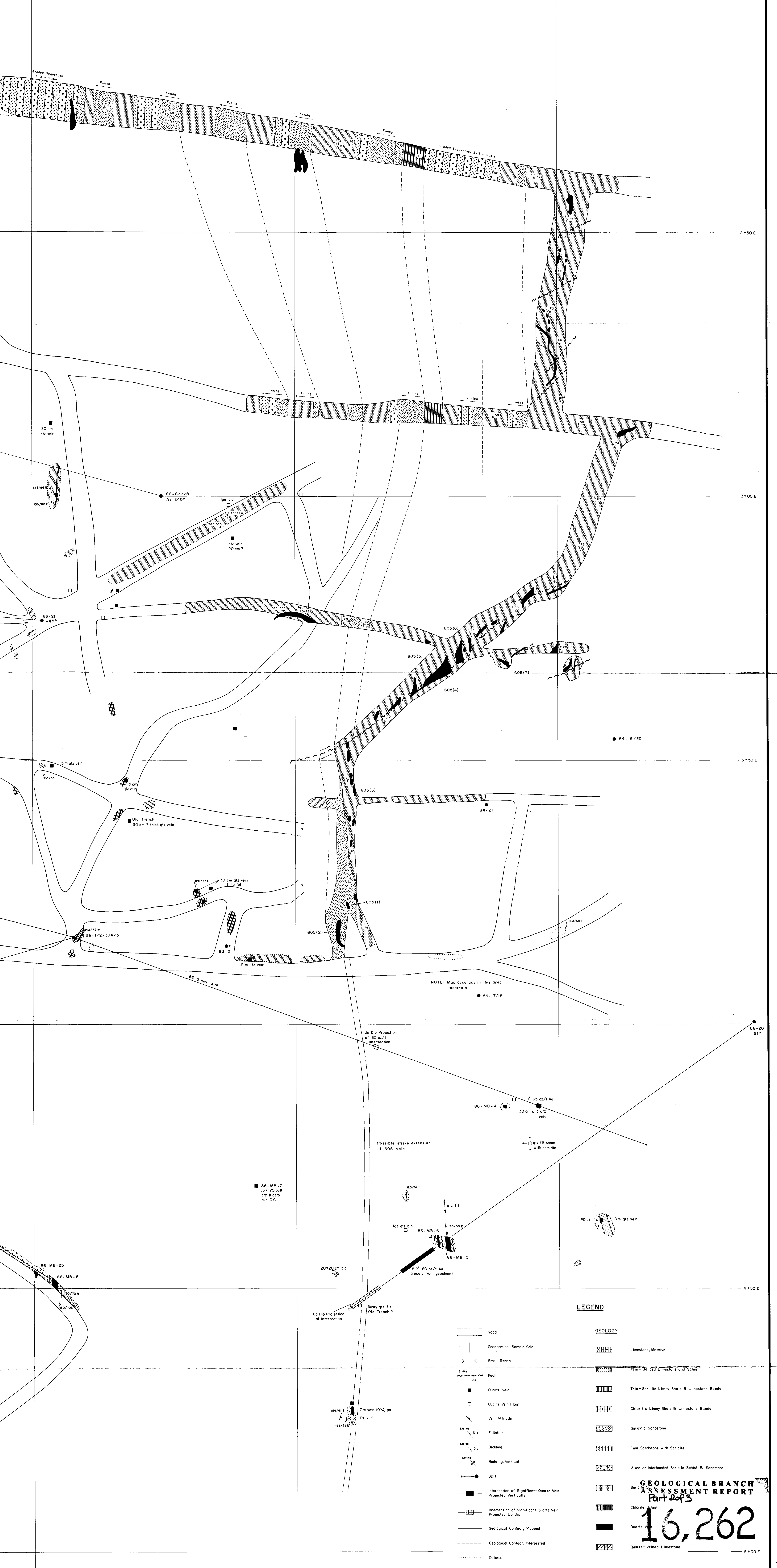
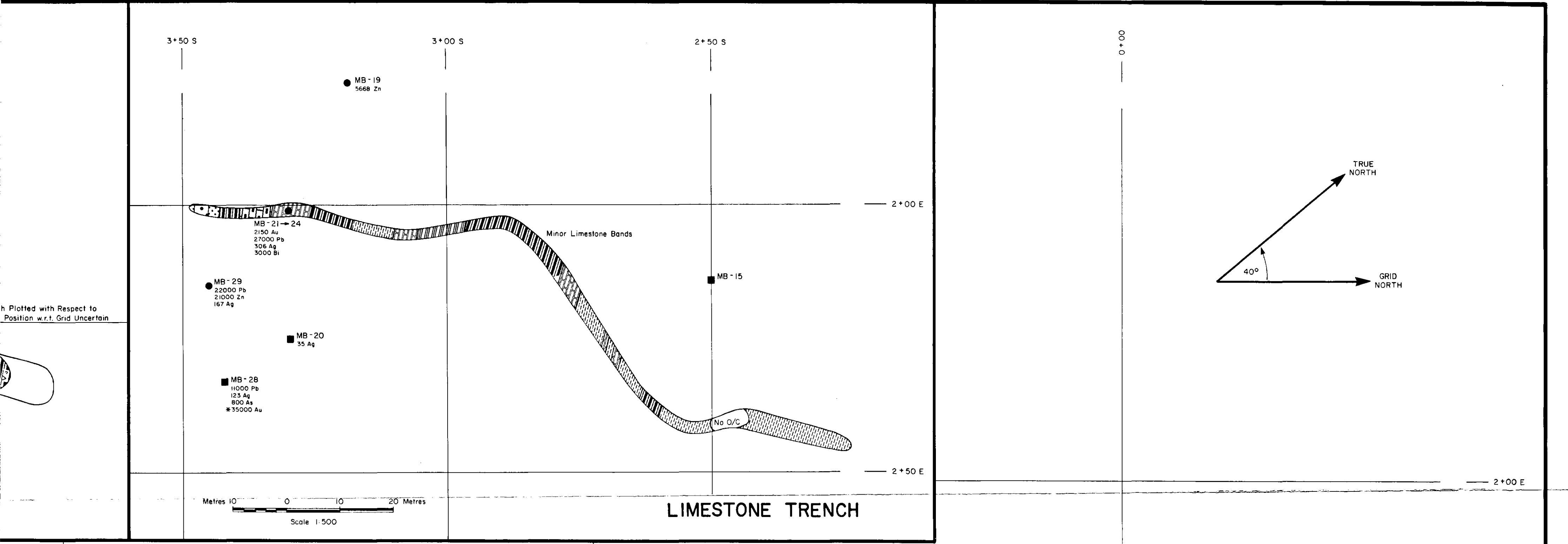
SAMPLE WIDTH	Au	Ag
No.	cm	oz/T
51	366	0.008 0.01
52	185	0.133 0.04
53	91	0.227 0.08
54	91	0.057 0.03
55	100	0.004 0.02
56	130	0.136 0.03
57	70	0.073 0.02
58	60	0.016 0.12
59	70	0.001 0.01
510	91	0.001 0.03
511	185	0.001 0.01
515	106	0.592 0.09
516	100	0.063 0.02
517	120	0.158 0.05
518	140	0.245 0.04
519	110	0.063 0.02
520	80	0.276 0.61
521	50	0.024 0.04
522	40	0.001 0.04
523	170	0.001 0.06
524	18	0.038 0.05

LEGEND  
 ○ 605 SURVEY POINT  
 --- 200' Level  
 --- 250' Level  
 --- 300' Level  
 --- 350' Level  
 ○ OUTCROP  
 □ RAISE  
 --- GDH LENGTH TREND AND INCLINATION - DATA OBTAINED FROM CARBOD  
 1:0" 2:30 GOLD VALUES IN FEET AND O/P/T LEVEL MAP 1947

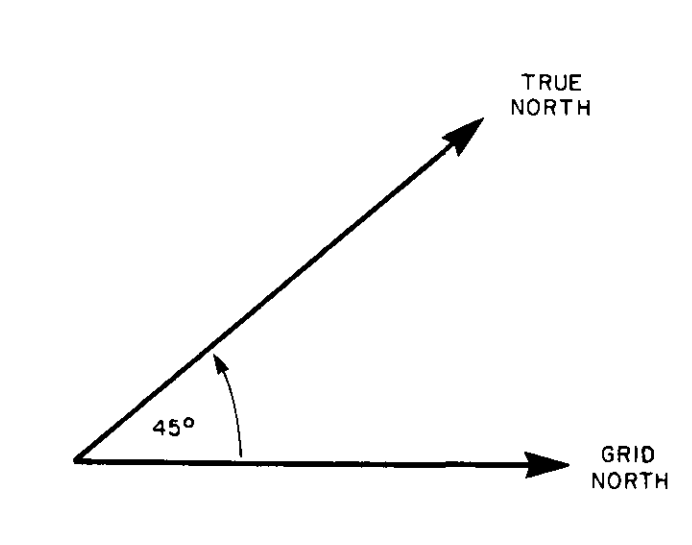
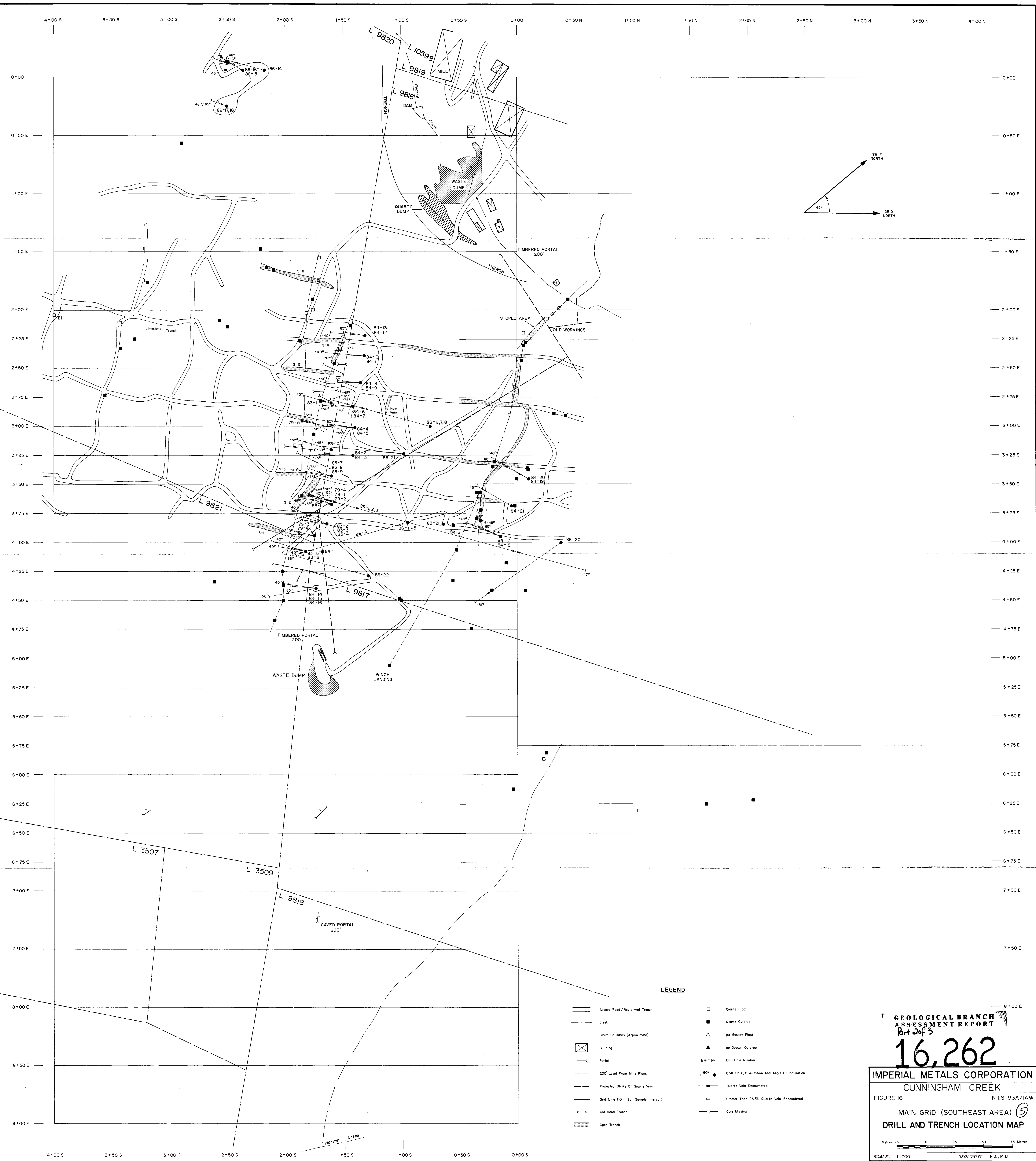
GEOLOGICAL BRANCH  
 ASSESSMENT REPORT  
 Part 2 of 3  
**16,262**

IMPERIAL METALS CORPORATION  
 CUNNINGHAM CREEK  
 FIGURE 12 N.T.S. 93A/14W  
**GEOLOGY:**  
 200' MINE LEVEL (3)  
 SCALE: 1" = 40'  
 DATE: AUG, 1986 (REVISED - MAR, 1987) GEOLOGIST: S. P. QUIN, B.Sc., P.D.  
 DRAWN BY: R. M. GEL/SEH





**IMPERIAL METALS CORPORATION**  
**CUNNINGHAM CREEK**  
 FIGURE 15 N.T.S. 93A/14W  
**TRENCH GEOLOGY, 1986 DRILL**  
**HOLE SAMPLE LOCATIONS** ④  
**MAIN GRID, S.E. AREA**  
 Metres 0 5 10 15 20  
 SCALE: 1:250  
 DATE: MAY, 1987  
 GEOLOGIST: P.D., M.B.  
 DRAWN BY: S. HAWORTH



- LEGEND**
- |  |                                      |  |   |
|--|--------------------------------------|--|---|
|  | Access Road/Reclaimed Trench         |  | Quartz Float                                    |
|  | Creek                                |  | Quartz Outcrop                                  |
|  | Claim Boundary (Approximate)         |  | po Gossion Float                                |
|  | Building                             |  | po Gossion Outcrop                              |
|  | Portal                               |  | 84-14 Drill Hole Number                         |
|  | 200 Level From Mine Plans            |  | Drill Hole Orientation and Angle of Inclination |
|  | Projected Strike of Quartz Vein      |  | Quartz Vein Encountered                         |
|  | Grid Line (10m Soil Sample Interval) |  | Greater Than 25% Quartz Vein Encountered        |
|  | Old Hand Trench                      |  | Core Missing                                    |
|  | Open Trench                          |  |   |

**GEOLOGICAL BRANCH  
ASSESSMENT REPORT**  
Part 2 of 3

# 16,262

**IMPERIAL METALS CORPORATION  
CUNNINGHAM CREEK**

FIGURE 16 NTS: 93A/14W

**MAIN GRID (SOUTHEAST AREA) 5**  
**DRILL AND TRENCH LOCATION MAP**

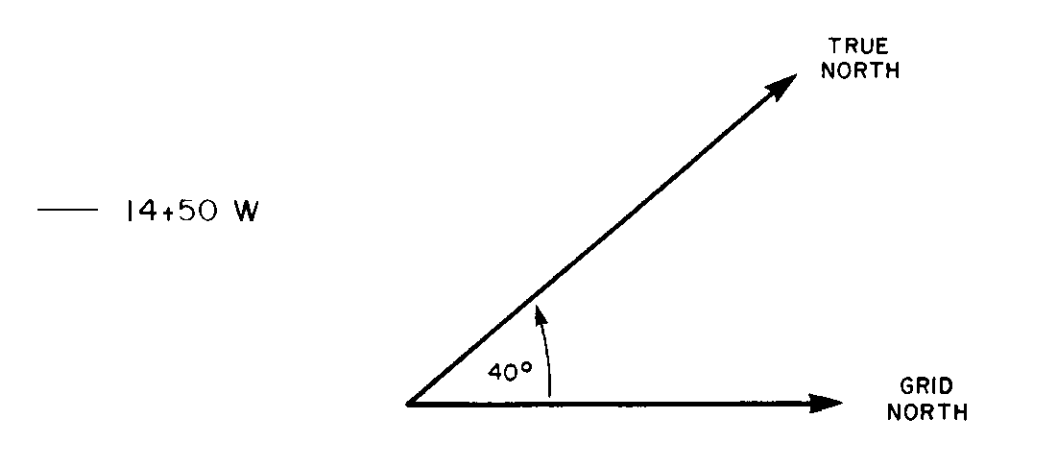
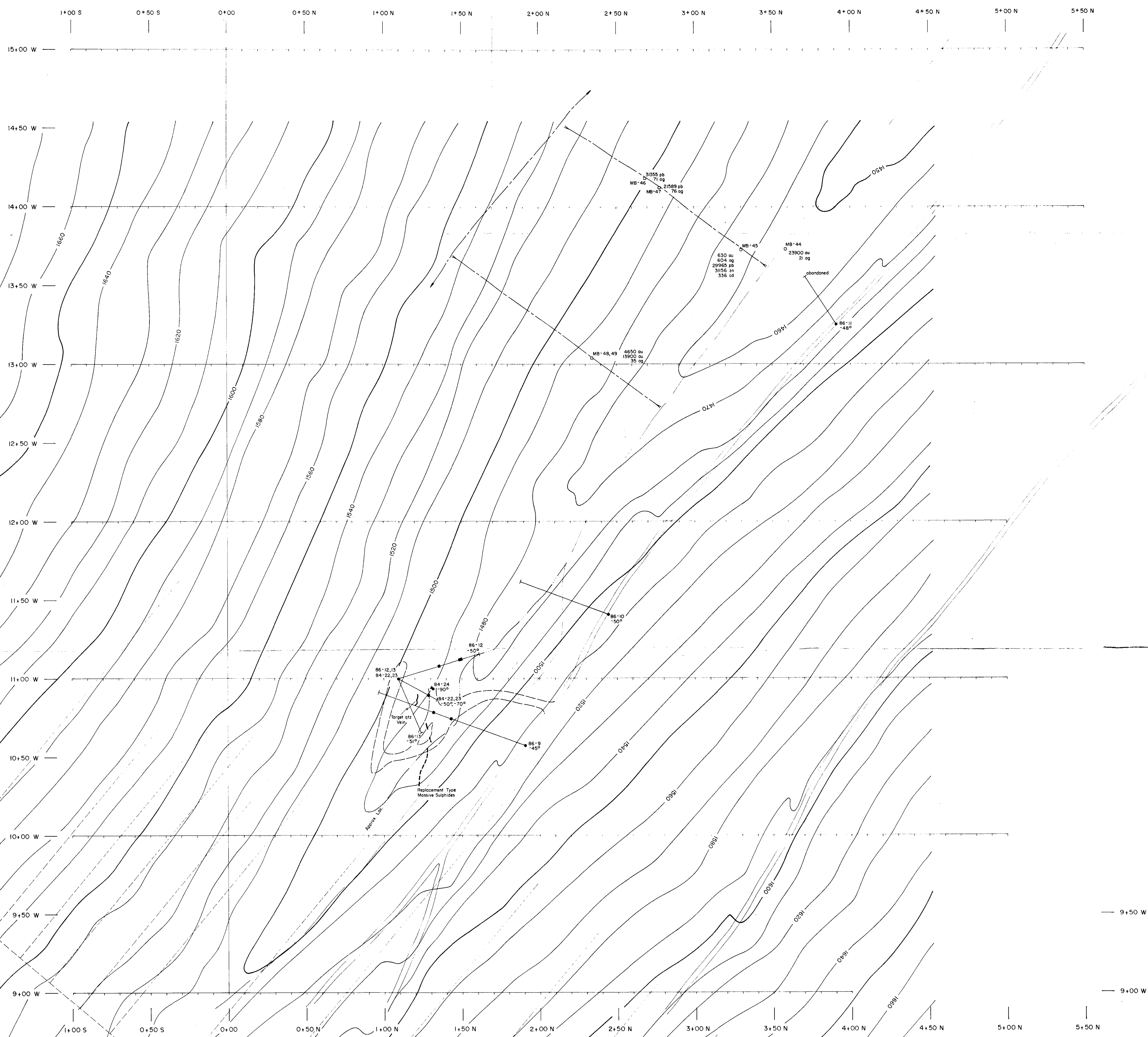
Metres 25 0 25 50 75

SCALE: 1:1000

DATE: MAY, 1987

GEOLOGIST: P.D., M.B.

DRAWN BY: J. CORKUM



**LEGEND**

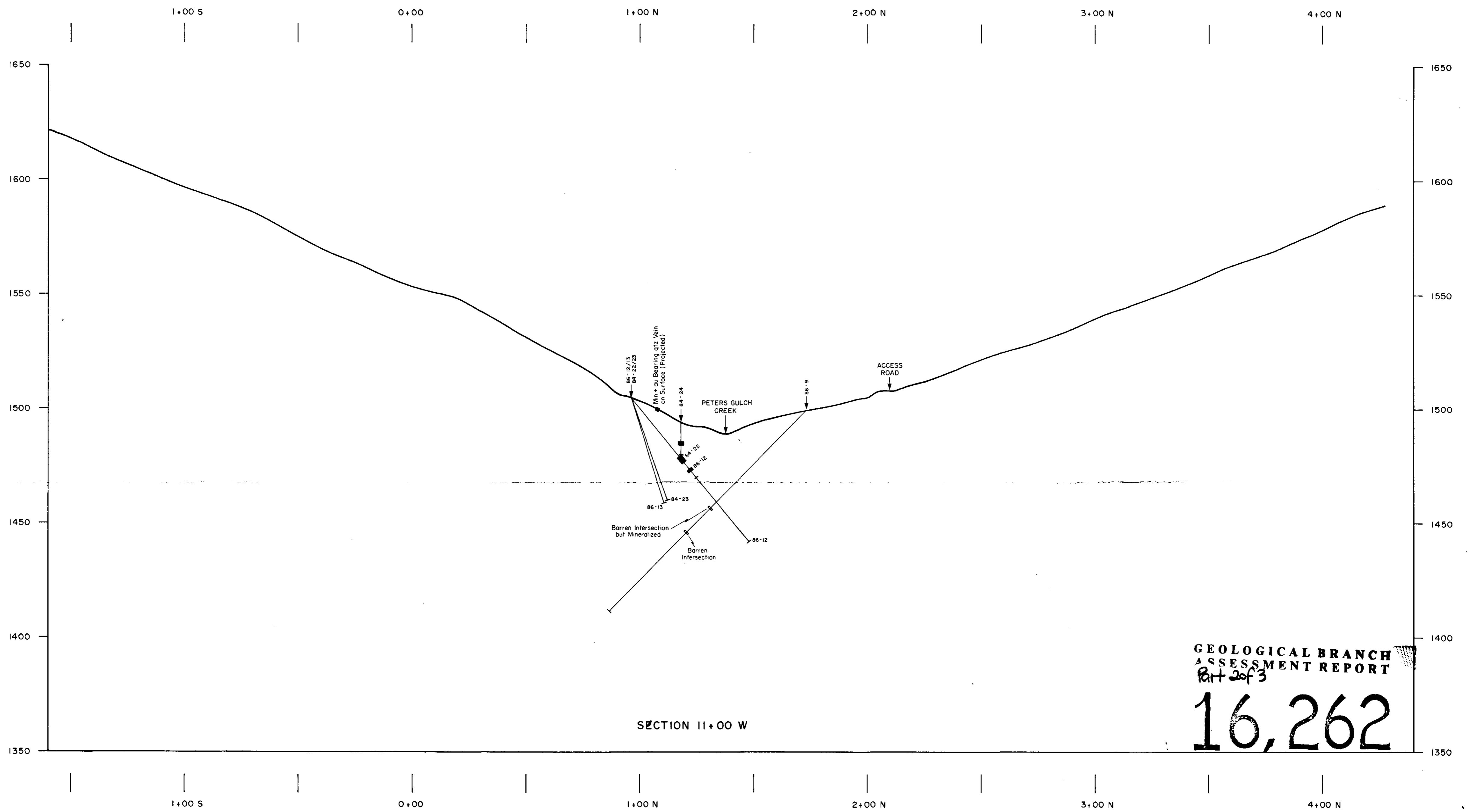
	Access Road/Reclaimed Trench
	Creek
	Claim Boundary (Approximate)
	Soil Sample Line
	Drill Hole
	Mineralized Intersection
	1983 Centre Grid (Approximate)
	Man Made Gully
	Gully

**GEOLOGICAL BRANCH**  
**ASSESSMENT REPORT**  
 Part 2 of 3  
**16,262**

**IMPERIAL METALS CORPORATION**  
**CUNNINGHAM CREEK**  
 FIGURE 19 N.T.S. 93A/14W  
**SULPHIDE AREA - MAIN GRID**  
**DRILL HOLE LOCATIONS**

Metres 25 0 25 50 75 Metres  
 SCALE: 1:1000  
 DATE: APRIL, 1987  
 GEOLOGIST: P.D., M.B.  
 DRAWN BY: S. HAWORTH





SECTION 11+00 W

GEOLOGICAL BRANCH  
ASSESSMENT REPORT  
Part 2 of 3  
**16,262**

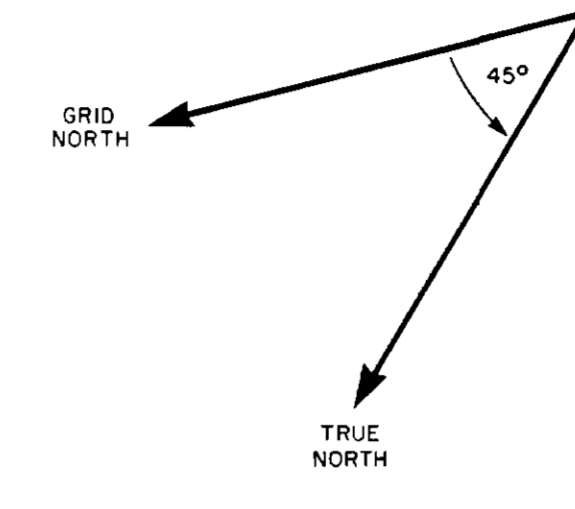
LEGEND

- Drill Hole
- Ore Intersection

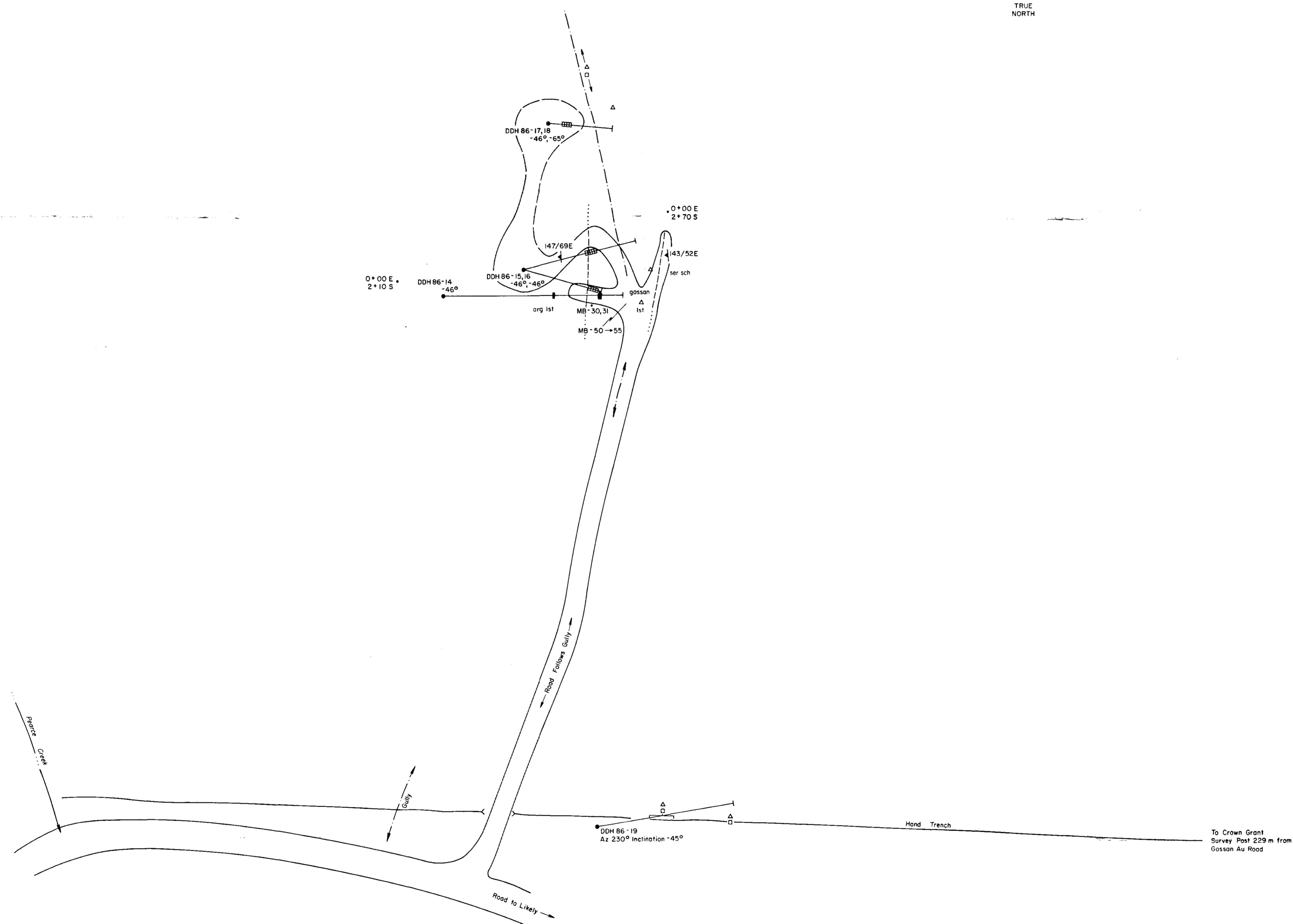
IMPERIAL METALS CORPORATION	
CUNNINGHAM CREEK	
FIGURE 19a	N.T.S. 93A/14W
<b>CROSS - SECTION: SULPHIDE SHOWING</b>	
HOLES AND INTERSECTIONS PROJECTED AT RIGHT ANGLES ONTO 11+00 W	
SCALE: 1:1000	GEOLOGIST: P.D., M.B.
DATE: APRIL, 1987	DRAWN BY: S. HAWORTH

1+50 S —  
 1+75 S —  
 2+00 S —  
 2+25 S —  
 2+50 S —  
 2+75 S —  
 3+00 S —  
 3+25 S —  
 3+50 S —  
 3+75 S —  
 4+00 S —

MB-65,66



0+50 E  
 0+25 E  
 0+00  
 0+25 W  
 0+50 W  
 0+75 W  
 1+00 W  
 1+25 W  
 1+50 W  
 1+75 W



**LEGEND**

- ■ qtz FLOAT, qtz VEIN OUTCROP
- ▲ ▲ po GOSSAN FLOAT, po GOSSAN OUTCROP
- ▬ INTERSECTION OF HEAVY REPLACEMENT TYPE MINERALIZATION, PROJECTED VERTICALLY TO SURFACE
- INTERSECTION OF qtz VEIN
- DEFINED GEOLOGIC CONTACT
- ASSUMED GEOLOGIC CONTACT
- ..... INFERRED GEOLOGIC CONTACT
- GULLY
- 45° DDH AND INCLINATION

**GEOLOGICAL BRANCH**  
**ASSESSMENT REPORT**

Part 2 of 3  
**16,262**

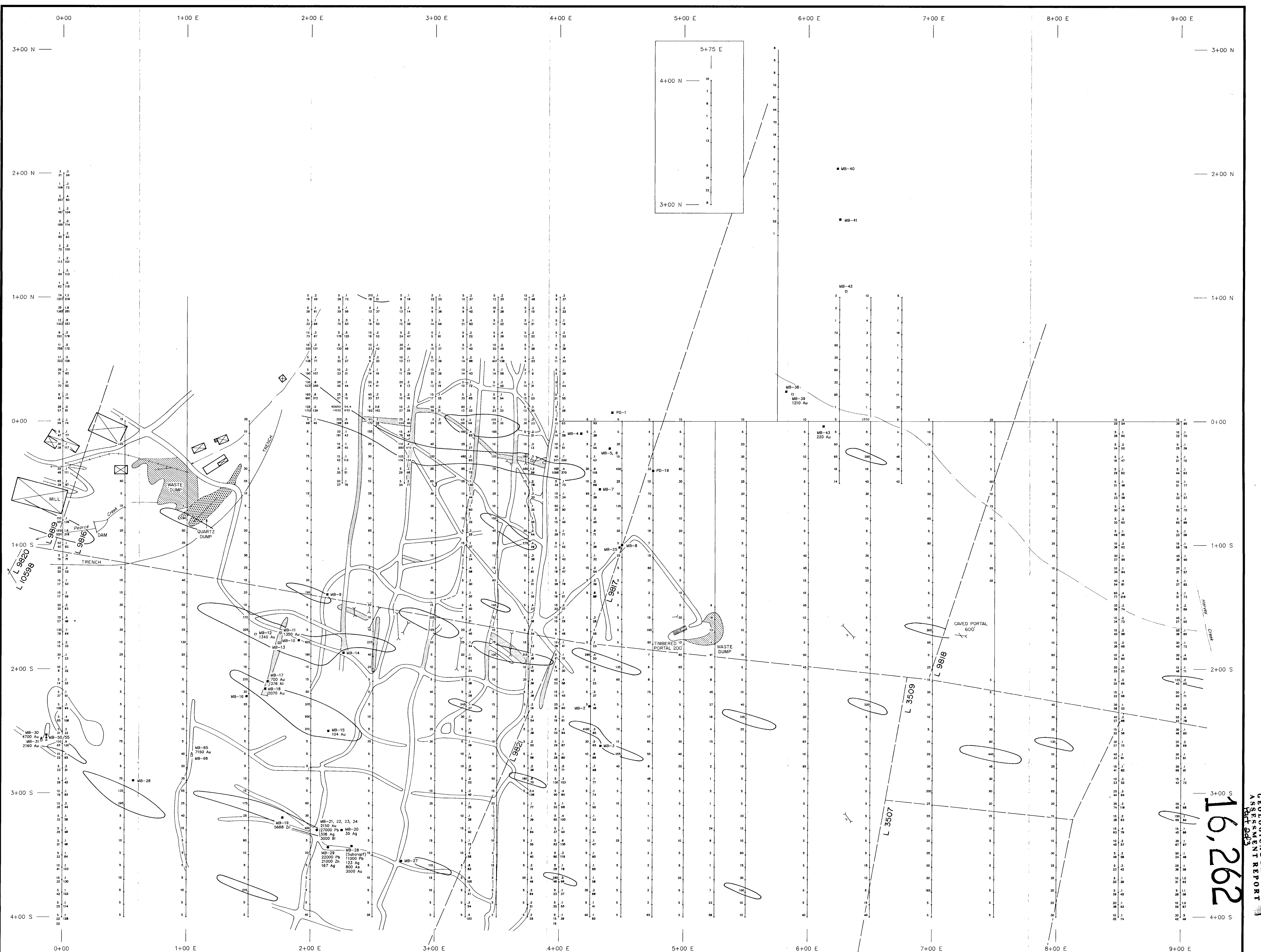
**IMPERIAL METALS CORPORATION**  
**CUNNINGHAM CREEK**

FIGURE 20 N.T.S. 93A/14W

**GOSSAN GOLD SHOWING** (8)  
**DRILL HOLE LOCATIONS**

Metres 10 0 10 20 30

SCALE: 1:500 GEOLOGIST: P.D., M.B.  
 DATE: APRIL, 1987 DRAWN BY: J. CORKUM



LEGEND

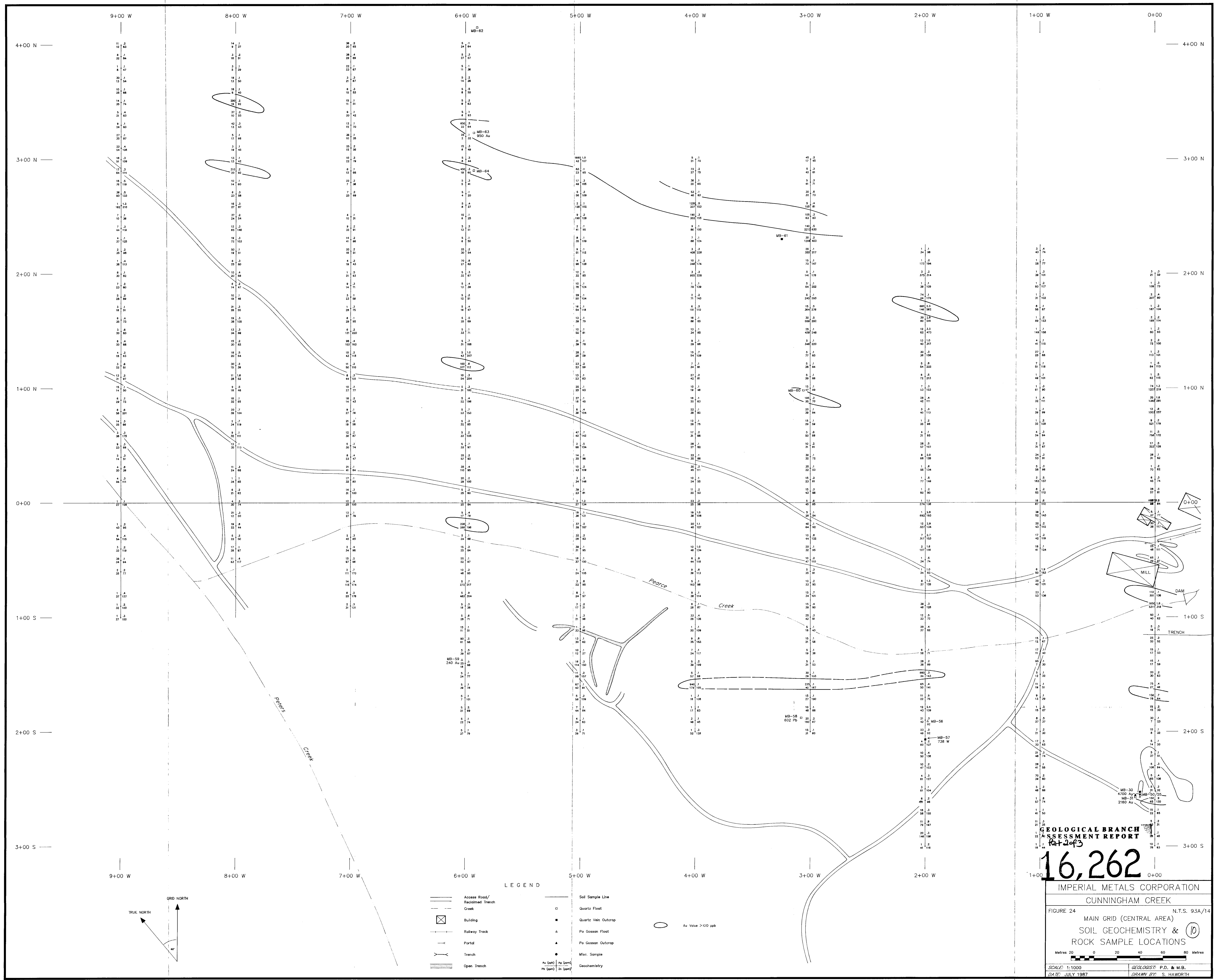
- |  |                                  |  |                     |
|--|----------------------------------|--|---------------------|
|  | Access Road/<br>Reclaimed Trench |  | Soil Sample Line    |
|  | Creek                            |  | Quartz Float        |
|  | Building                         |  | Quartz Vein Outcrop |
|  | Railway Track                    |  | Pb Casson Float     |
|  | Portal                           |  | Pb Casson Outcrop   |
|  | Trench                           |  | Misc. Sample        |
|  | Open Trench                      |  | Geochemistry        |
- Au (ppb)    Ag (ppm)  
 Pb (ppm)    Zn (ppm)



IMPERIAL METALS CORPORATION  
 CUNNINGHAM CREEK  
 FIGURE 23 N.T.S. 93A/14  
 MAIN GRID (SOUTHEAST AREA)  
 SOIL GEOCHEMISTRY & ROCK SAMPLE LOCATIONS  
 Metres 0 20 40 60 80  
 SCALE: 1:1000  
 DATE: JULY 1987  
 GEOLGIST: P.D. & M.B.  
 DRAWN BY: S. HAWORTH

16,262

ASSESSMENT REPORT



**GEOLOGICAL BRANCH  
ASSESSMENT REPORT**  
Rat 2 of 3

# 16,262

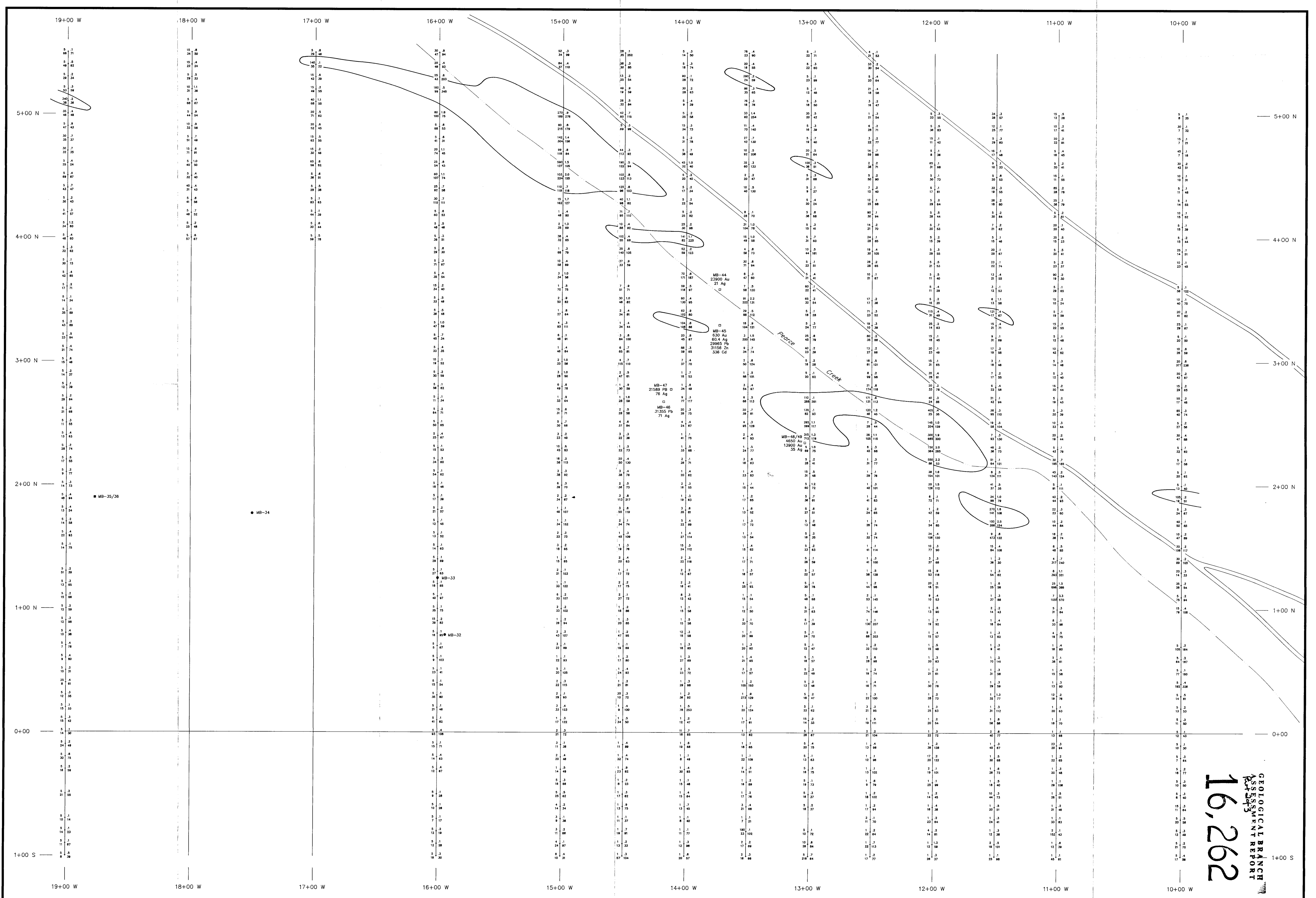
IMPERIAL METALS CORPORATION  
CUNNINGHAM CREEK

FIGURE 24 MAIN GRID (CENTRAL AREA) N.T.S. 93A/14  
SOIL GEOCHEMISTRY & 10  
ROCK SAMPLE LOCATIONS

Metres 0 20 40 60 80

SCALE: 1:1000  
DATE: JULY 1987

GEOLOGIST: P.D. & M.B.  
DRAWN BY: S. HAWORTH



# 16,262

GEOLOGICAL BRANCH  
ASSESSMENT REPORT

IMPERIAL METALS CORPORATION  
CUNNINGHAM CREEK

FIGURE 25a N.T.S. 93A/14

MAIN GRID (NORTHWEST AREA)

SOIL GEOCHEMISTRY & II

ROCK SAMPLE LOCATIONS

Metres 20 0 20 40 60 80

SCALE: 1:1000

DATE: JULY 1987

GEOLOGIST: P.D. & M.B.

DRAWN BY: S. HAWORTH

- LEGEND
- |  |   |
|--|---|
| <ul style="list-style-type: none"> <li> Access Road/Reclaimed Trench</li> <li> Creek</li> <li> Building</li> <li> Railway Track</li> <li> Portal</li> <li> Trench</li> <li> Open Trench</li> </ul> | <ul style="list-style-type: none"> <li> Soil Sample Line</li> <li> Quartz Float</li> <li> Quartz Vein Outcrop</li> <li> Po Gossan Float</li> <li> Po Gossan Outcrop</li> <li> Misc. Sample</li> <li> Geochemistry</li> </ul> <p style="font-size: small;">Au (ppb)   Ag (ppm)<br/>Po (ppm)   Zn (ppm)</p> |
|--|---|

14+00 W

13+00 W

8+00 N

7+00 N

6+00 N

5 + .3  
14 + 50

14+00 W

13+00 W

5	.5
29	49
7	.7
25	47
19	.3
27	71
9	.3
28	85
30	.2
12	39
32	.4
18	47
67	.1
24	82
16	.7
22	89
13	.2
22	63
38	.4
26	85
34	.1
28	81
29	.3
28	82
23	.5
21	53
15	.1
14	41
21	.4
18	53
20	.3
22	89
58	.2
29	83
40	.1
27	108
24	.2
32	85
144	.2
35	82
13	.2
32	89
10	.1
24	57
9	.2
34	88
6	.4
23	72
7	.2
22	58
76	.4
23	90

1	.3
23	67
6	.5
35	120
17	.4
13	33
22	.1
3	25
9	.1
5	28
6	.2
18	37
8	.3
31	48
5	.3
24	66
11	.1
24	66
3	.8
26	88
20	.5
38	59
7	.3
47	66
23	.2
27	88
12	.4
13	31
17	.3
25	54
22	.5
25	93
21	.1
24	76
17	.4
23	64
46	.1
25	87
35	.2
23	94
24	.1
28	71
19	.1
17	57
14	.2
26	75
34	.1
35	86
67	.1
54	93
5	.1
22	71

# GEOLOGICAL BRANCH ASSESSMENT REPORT

Part 2 of 3

# 16,262

LEGEND

- Access Road/  
Reclaimed Trench
- Creek
- Building
- Railway Track
- Portal
- Trench
- Open Trench
- Soil Sample Line
- Quartz Float
- Quartz Vein Outcrop
- Po Gossan Float
- Po Gossan Outcrop
- Misc. Sample
- |          |          |
|----------|----------|
| Au (ppb) | Ag (ppm) |
| Pb (ppm) | Zn (ppm) |

 Geochemistry
- Au Value > 100 ppb

IMPERIAL METALS CORPORATION

CUNNINGHAM CREEK

FIGURE 25b N.T.S. 93A/14  
MAIN GRID (NORTHWEST AREA -EXTENSION)

SOIL GEOCHEMISTRY &  
ROCK SAMPLE LOCATIONS **12**

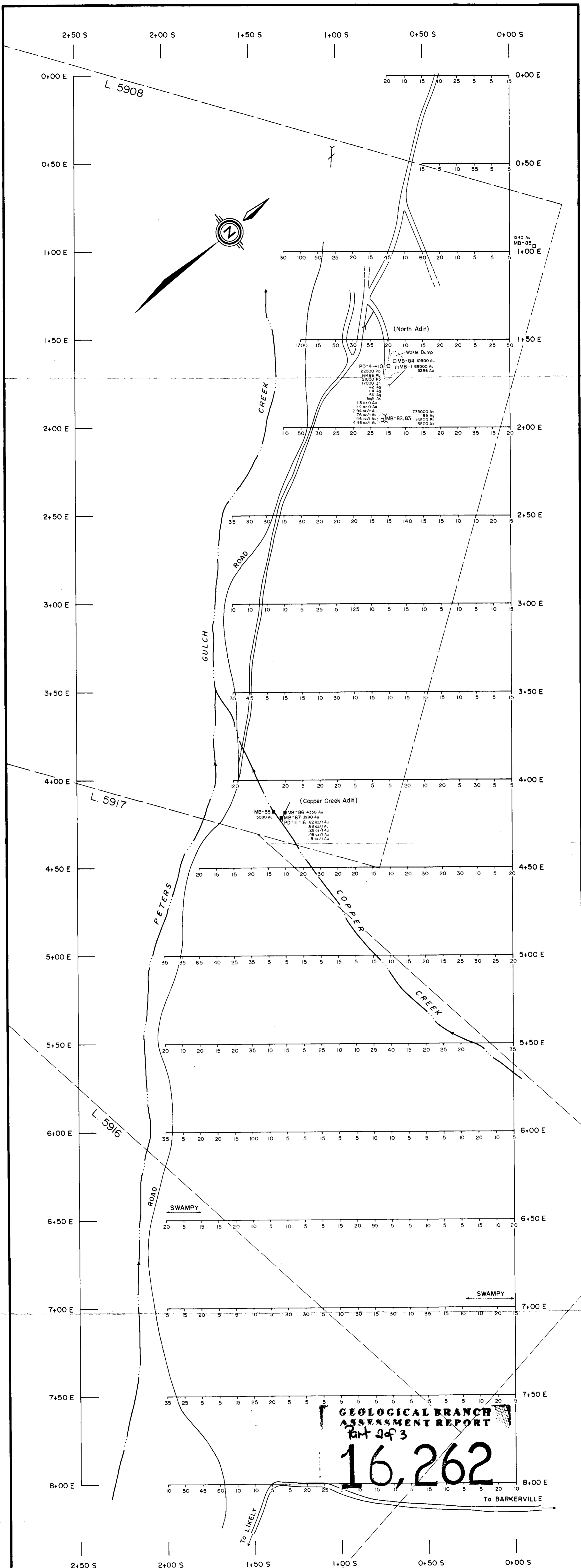
Metres 0 20 40 60 80

SCALE 1:1000

GEOLOGIST P.D. & M.B.

DATE JULY 1987

DRAWN BY S. HAWORTH



2+50 S      2+00 S      1+50 S      1+00 S      0+50 S      0+00 S

0+00 E  
0+50 E  
1+00 E  
1+50 E  
2+00 E  
2+50 E  
3+00 E  
3+50 E  
4+00 E  
4+50 E  
5+00 E  
5+50 E  
6+00 E  
6+50 E  
7+00 E  
7+50 E  
8+00 E

L. 5908

L. 5917

L. 5916

PETERS ROAD

GULCH

CREEK

(North Adit)

Waste Dump

1240 Au  
MB-85

1700 15 50 30 55 20 10 60 20 10 5 5

110 50 30 25 20 25 15 10 15 20 20 35 15 20

35 30 30 15 30 20 20 20 15 15 140 15 15 10 20 15

10 10 10 10 5 25 5 125 10 5 15 10 5 10 5 10 15

35 45 5 15 15 10 30 10 15 10 15 10 5 5 5

120 20 5 20 5 5 20 10 20 5 30 5 5

(Copper Creek Adit)

MB-88 5080 Au

MB-86 4350 Au

MB-87 3990 Au

PD-11-16 52 oz/1 Au  
68 oz/1 Au  
28 oz/1 Au  
46 oz/1 Au  
19 oz/1 Au

735000 Au  
199 Ag  
14500 Pb  
3800 As

1.3 oz/1 Au  
1.5 oz/1 Au  
2.94 oz/1 Au  
70 oz/1 Au  
4.6 oz/1 Au  
4.46 oz/1 Au

20 15 15 20 15 10 20 30 20 20 10 5 20

35 35 65 40 25 35 5 5 15 5 15 5 15 10 15 25 30 25 20

20 10 20 15 20 35 10 15 5 25 10 10 25 40 15 20 25 20 35

35 5 20 20 15 100 10 5 5 15 5 5 10 10 5 5 10 10 5 5 10 20

20 5 15 15 20 10 5 10 5 5 15 20 95 5 5 10 5 5 15 10 20

5 15 20 5 5 10 5 30 30 5 10 30 15 30 10 3.5 15 10 10 20 15

35 25 5 5 15 25 5 5 5 5 5 5 5 5 5 5 10 20 5

10 50 45 60 10 10 5 20 25 15 15 10 5 15 10 5 15 10 5 10 10

To BARKERVILLE

To LIKELY

SWAMPY

SWAMPY

**GEOLOGICAL BRANCH  
ASSESSMENT REPORT  
Part 2 of 3  
16,262**

2+50 S      2+00 S      1+50 S      1+00 S      0+50 S      0+00 S

**LEGEND**

- Road
- Stream
- Claim Boundary
- Portal
- Portal (Caved)
- Geochemical Assay Value of B Soil Horizon - Au (ppb)
- Quartz Float
- Quartz Vein Outcrop

**IMPERIAL METALS CORPORATION  
CUNNINGHAM CREEK**

FIGURE 26      N.T.S. 93A/14

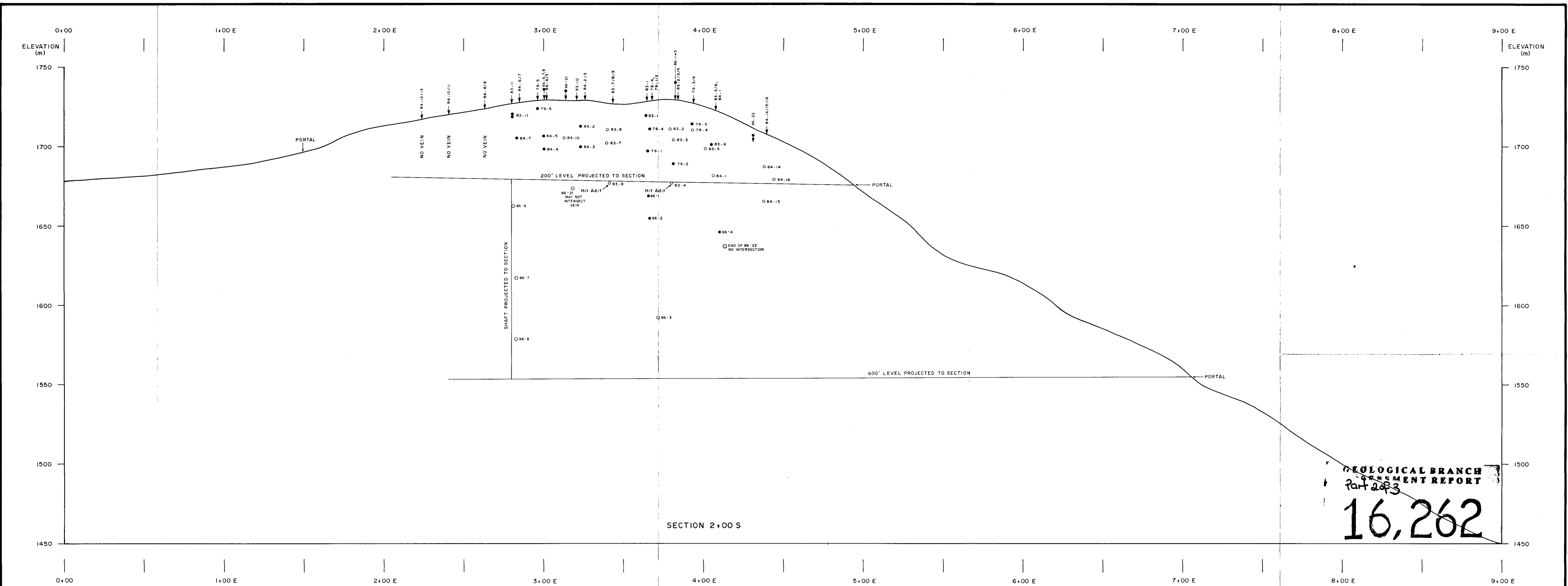
**NORTH GRID  
SOIL GEOCHEMISTRY: Au  
& ROCK SAMPLE LOCATIONS**

Cariboo Mining Division, British Columbia

Metres 25      0      25      50      75 Metres

SCALE: 1:1000      GEOLOGIST: S. P. QUIN, B.Sc.

DATE: JULY 1987      DRAWN BY: S. HAWORTH/J.C.



SECTION 2+00 S

**LEGEND**

- Projected Intersection, Shasta Vein - Auriferous
- Projected Intersection, Shasta Vein - Barren
- ▲ Elevation of Collar, Projected onto 2+00S Plane (Applies to 86 Notes Only)

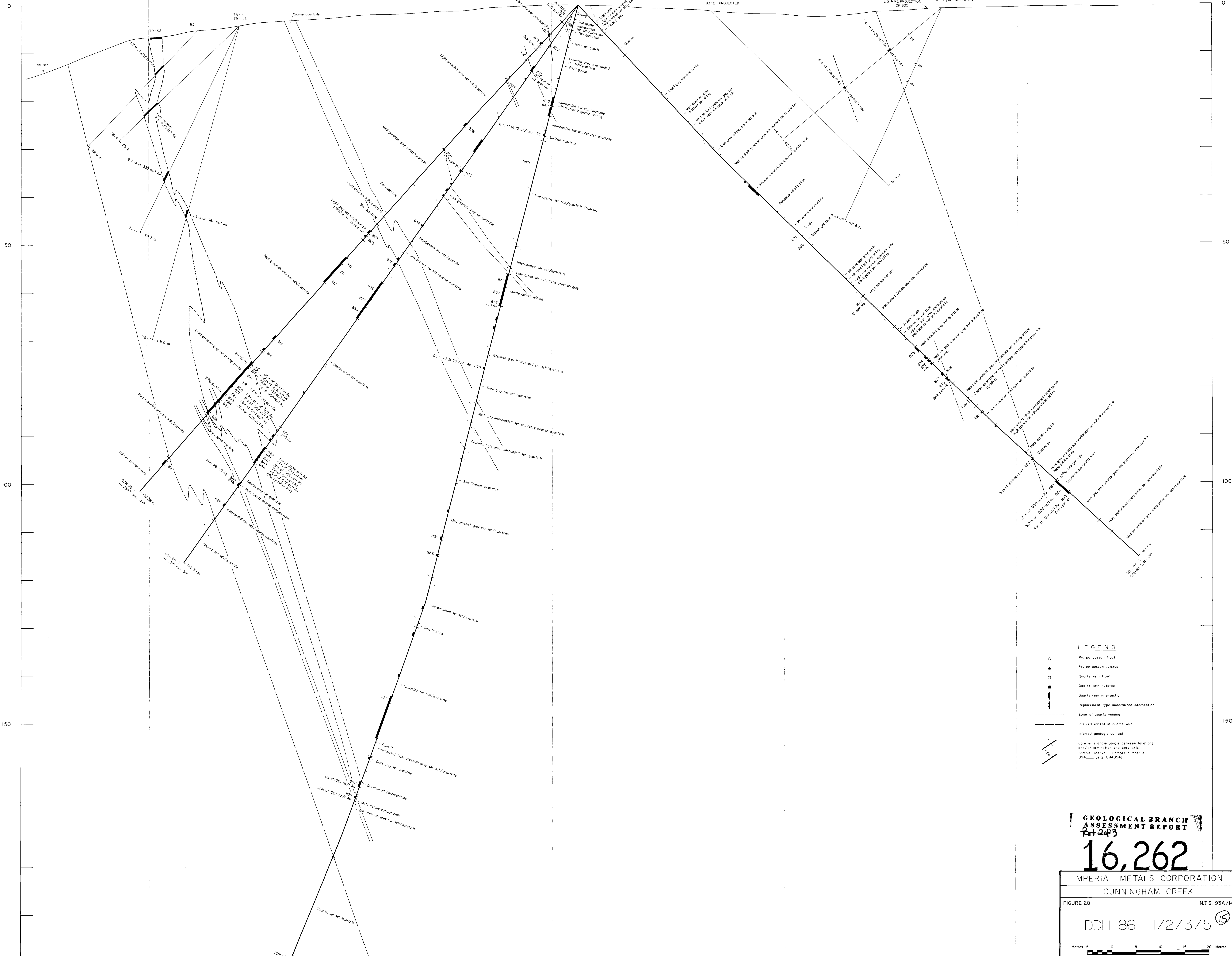
GEOLOGICAL BRANCH  
ASSESSMENT REPORT  
Part 2 of 3  
**16,262**

IMPERIAL METALS CORPORATION	
CUNNINGHAM CREEK	
FIGURE 27	N.T.S. 93A/14W
SECTION 2+00 S LONGITUDINAL SECTION: (14) SHASTA VEIN	
SCALE: 1:1000	GEOLOGIST: S. P. QUIN, B.Sc., P.D.
DATE: AUG., 1986 REVISED MAY, 1987	DRAWN BY: S. HAWORTH



DEPTH  
(Metres)

DEPTH  
(Metres)



- LEGEND**
- ▲ Py, po gossan float
  - △ Py, po gossan outcrop
  - Quartz vein float
  - ▣ Quartz vein outcrop
  - ▬ Quartz vein intersection
  - ▬ Replacement type mineralized intersection
  - ▬ Zone of quartz veining
  - ▬ Inferred extent of quartz vein
  - ▬ Inferred geologic contact
  - ▬ Core axis angle (angle between foliation and/or laminar and core axis)
  - ▬ Sample interval. Sample number is 098 — 149, 0940261

**GEOLOGICAL BRANCH  
ASSESSMENT REPORT**

**16,262**

IMPERIAL METALS CORPORATION  
CUNNINGHAM CREEK

FIGURE 28 N.T.S. 93A/14

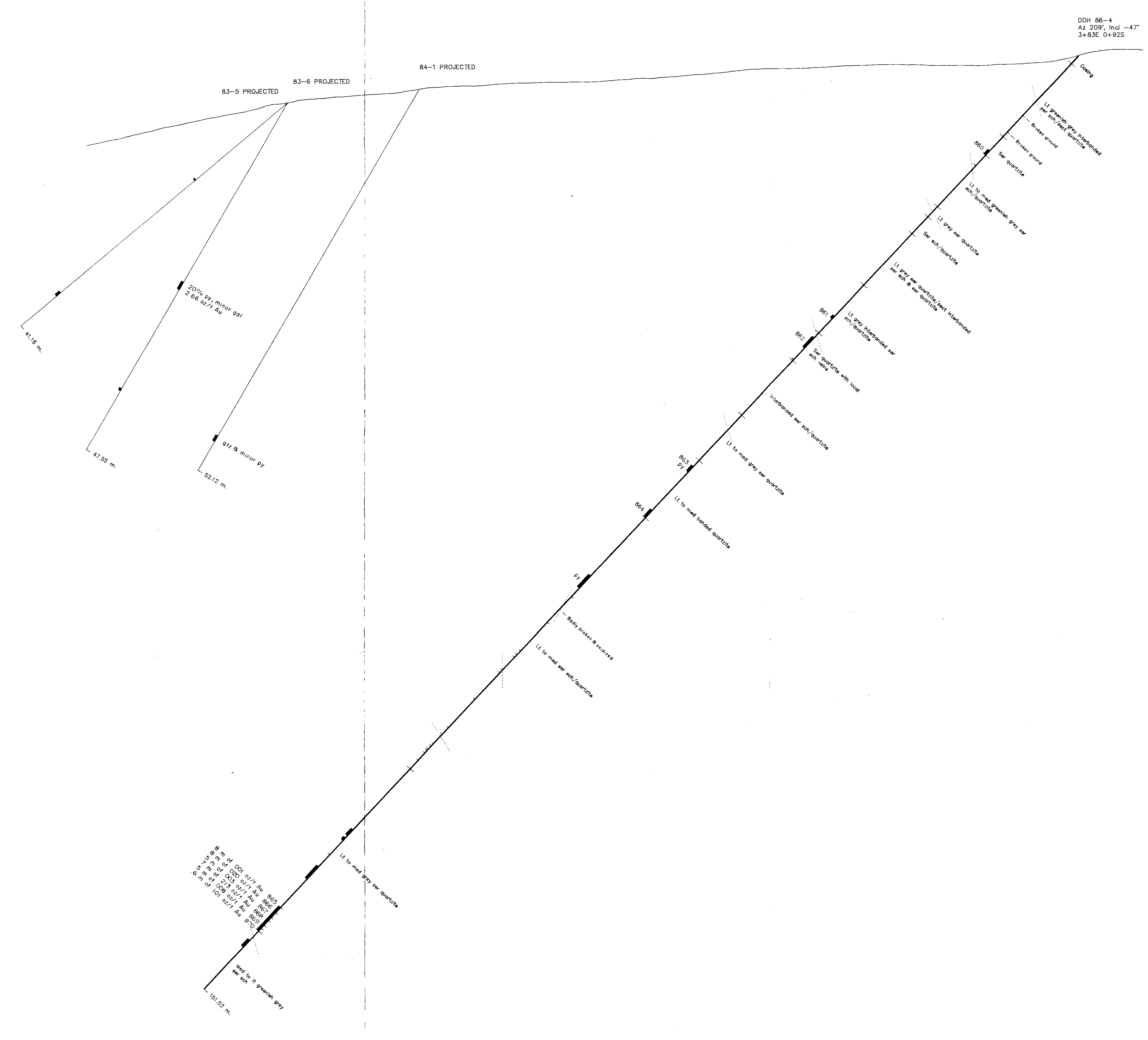
DDH 86-1/2/3/5

Metres 0 5 10 15 20 Metres

SCALE: 1:250 GEOLOGIST: P.D. & M.B.  
DATE: MAY 1987 DRAWN BY: J. CORKUM

DEPTH (Metres)  
0  
50  
100  
150  
200

DEPTH (Metres)  
0  
50  
100  
150  
200



**LEGEND**

- △ Py, po gossion float
- ▲ Py, po gossion outcrop
- Quartz vein float
- Quartz vein outcrop
- ▣ Quartz vein intersection
- ▤ Replacement type mineralized intersection
- ▥ Zone of quartz veining
- ▧ Inferred extent of quartz vein
- ▨ Inferred geologic contact
- ▩ Core axis angle (angle between foliation and/or lamination and core axis)
- Sample interval: Sample number is 094 (e.g. 094054)

**GEOLOGICAL BRANCH  
ASSESSMENT REPORT  
Part 2 of 3**  
**16,262**

IMPERIAL METALS CORPORATION  
CUNNINGHAM CREEK  
FIGURE 29 N.T.S. 93A/14  
DDH 86-4 16  
Metres 5 0 5 10 15 20 Metres  
SCALE: 1:250  
GEOLOGIST: P.D. & M.B.  
DATE: MAY 1987  
DRAWN BY: S. HAWORTH