

87-497 - 16321

5/88

PRELIMINARY RECONNAISSANCE

and

LITHOGEOCHEMICAL SURVEY

of the

BACON CLAIM

Nanaimo Mining Division - British Columbia

FILMED

Lat. $49^{\circ} 58'$ N.

Long. $125^{\circ} 37'$ W.

N.T.S. 92 F/13E

OWNER: MR. R. TESSOLINI

by

Douglas J. Brownlee, Geologist

July 20, 1987

Vancouver, B.C.

16,321

GEOLOGICAL BRANCH
ASSESSMENT REPORT

TABLE OF CONTENTS

SUMMARY	1 /
INTRODUCTION	1 /
LOCATION AND ACCESS	2 /
CLAIM DATA	2 /
HISTORY	2 /
WORK PROGRAM	2 /
GEOLOGY	2 /
LITHOGEOCHEMISTRY	3 /
CONCLUSIONS	4 /
REFERENCES /	
CERTIFICATE /	

ILLUSTRATIONS

Figure 1 Location Map	After p. 1 /
Figure 2 Access and Claim Map	After p. 2 /
Figure 3 Geology Map	After p. 2 /
Figure 4 Sample Locations	After p. 3 /

APPENDICES

Appendix I Lithogeochemical Results /	
Appendix II Statement of Costs /	

SUMMARY

A preliminary survey of the Bacon claim, owned by Mr. R. Tessolini was conducted by Mr. D. J. Brownlee, Mr. S. Sawiuk and Mr. R. Gosse from May 1st to 3rd, 1987.

The property is underlain by Triassic and/or Jurassic limestone and andesitic volcanic rocks which have been intruded by granodiorite, quartz diorite of the Coast Intrusions. Skarns have formed at the contact of the intrusive and limestone.

The purpose of the survey was to locate Argonaut Mines Ltd.'s diamond drill holes from the 1950's and to confirm the reported presence of cobalt mineralization. One possible drill site was located during the survey (Figure 4). A sample of magnetite with erythrite assayed 1.06% cobalt and 0.67 ounces per ton gold, confirming the presence of cobalt with the magnetite as reported.

INTRODUCTION

A preliminary exploratory reconnaissance and minor lithogeological survey was conducted on the Bacon claims of Mr. R. Tessolini from May 1st to 3rd, 1987. This survey was conducted by D. J. Brownlee, geologist, with the assistance of Mr. M. Sawiuk, geologist, and Mr. R. Gosse, geologist. The purpose of the survey was to determine the presence of cobalt mineralization within the magnetite skarn as reported by Argonaut Mines Ltd.

LOCATION AND ACCESS

The Bacon claim is located some 40 kilometres west of Campbell River, B.C., at approximately $125^{\circ} 37'$ W. longitude and $49^{\circ} 58'$ N. latitude and is covered by N.T.S. sheet 92 F/13E (Figure 1).

Access to the claims is by truck along Highway 28 from Campbell River to upper Campbell Lake and thence by year-round logging roads.

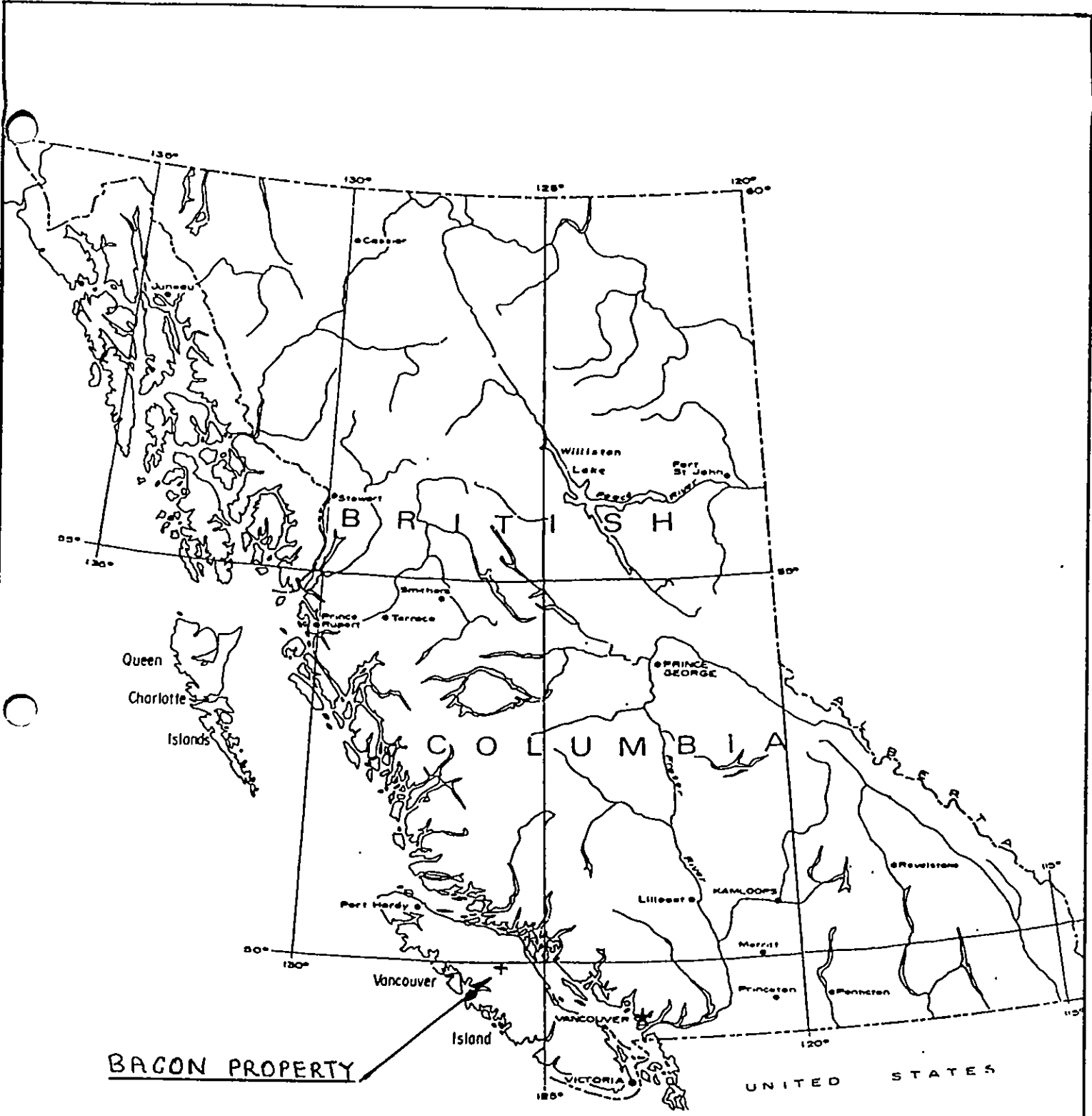
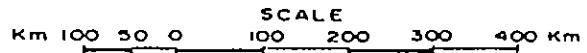


FIG. 1

LOCATION MAP



CLAIM DATA

The property consists of one 4-post mineral claim called the "Bacon" and is 12 units in size. It is recorded at the Nanaimo Mining Division Office under record number 2366. Mr. R. Tessolini of Lake Louise, Alberta, is the owner of record. The expiry date is May 16, 1988 (Figure 2).

HISTORY

A magnetite bearing skarn was first discovered in the claim area early 1950's. Argonaut Mines Ltd. conducted a magnetometer survey over the property and diamond drilled the property during the mid to late 1950's. Minor work was done on the property during the early 1960's, but apparently was not recorded. No further recorded work was done on the property until it was staked by Mr. R. Tessolini.

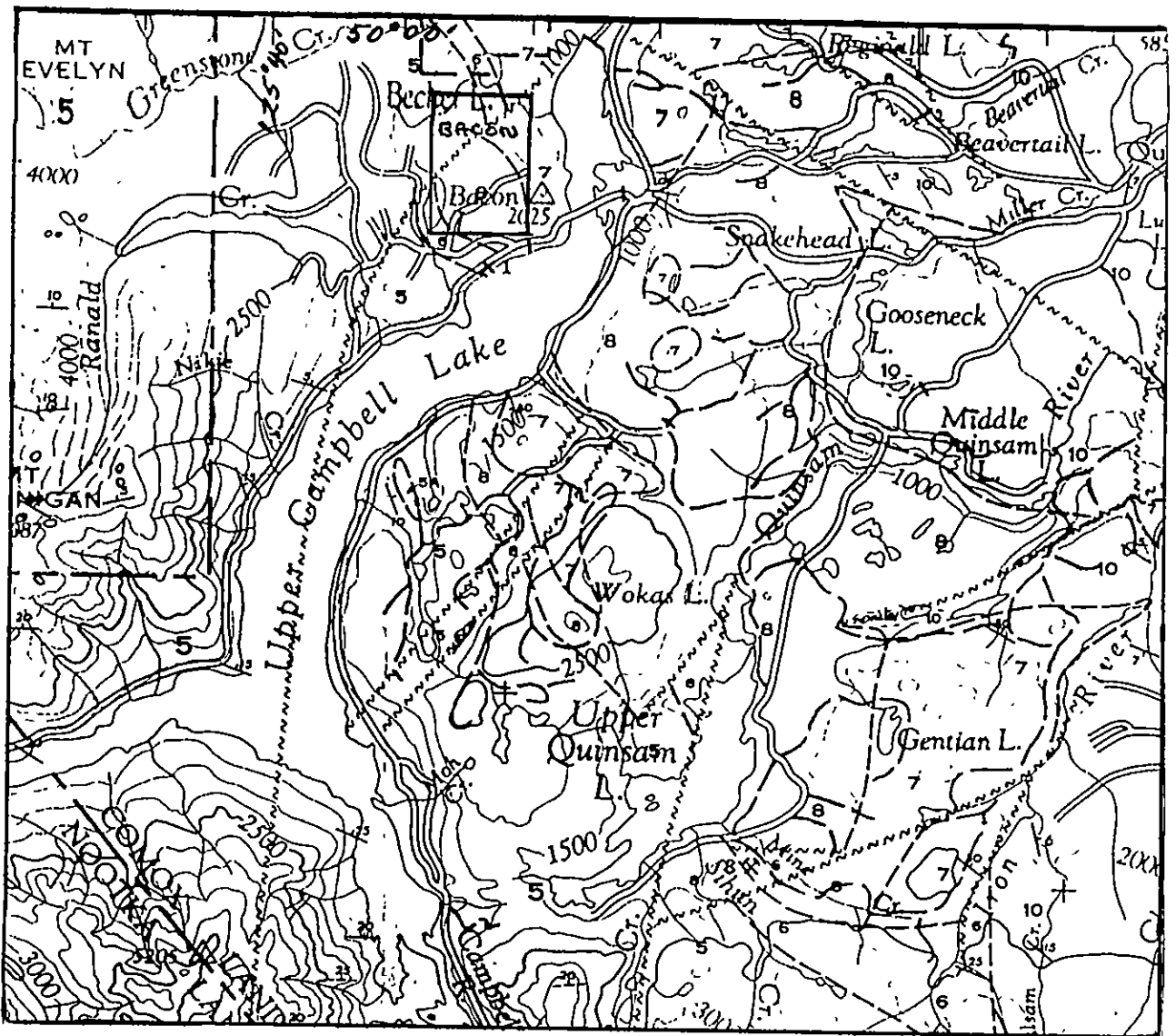
WORK PROGRAM

A one day traverse was conducted on the property to try and locate the Argonaut drill sites and to verify the presence of cobalt with magnetite skarn.

A few possible drill locations were found along a semi-overgrown logging road which traverses the east side of Bacon Lake (Figure 4). An outcrop of massive magnetite was found just west of the old road which, in one area of approximately 1 metre by 2.5 metres, showed a considerable amount of erythrite (cobalt bloom) along weathered surfaces and fractures.

GEOLOGY

The property is underlain by Upper Triassic limestone and calcareous shales of possibly the Quatsino Formation. Overlying this



CRETACEOUS

UPPER CRETACEOUS

NANAIMO GROUP (9-11)

10 COMOX FORMATION: sandstone, pebbly sandstone; minor conglomerate, shale, coal

JURASSIC AND (?) CRETACEOUS

COAST INTRUSIONS

8 Granodiorite; minor quartz diorite

TRIASSIC AND (?) JURASSIC

VANCOUVER GROUP (5-7)

7 Tuff, andesitic volcanic breccia and lava; argillite, siltstone; includes some rocks of unit 6

TRIASSIC

UPPER TRIASSIC

6 Limestone, calcareous shale; skarn near intrusive contacts

5 Massive, partly amygdaloidal, basalt, pillow basalt, pillow breccia; minor tuff, volcanic breccia

5A: limestone, calcareous siltstone, shale, interbedded in 5

- Geological boundary, approximate
- Bedding (horizontal, inclined, overturned)..... + / \
- Bedding (observed from distance or from air photos)..... / \
- Schistosity..... / \
- Fault, assumed

D.J.B. SERVICES LTD.

GEOLOGY MAP
BACON M.C.

NANAIMO N.D. 92F 13

July 20 87 DRWN BY D.J.B. FIG 3

Asten J.E. Moller 1964 Map 2-1965

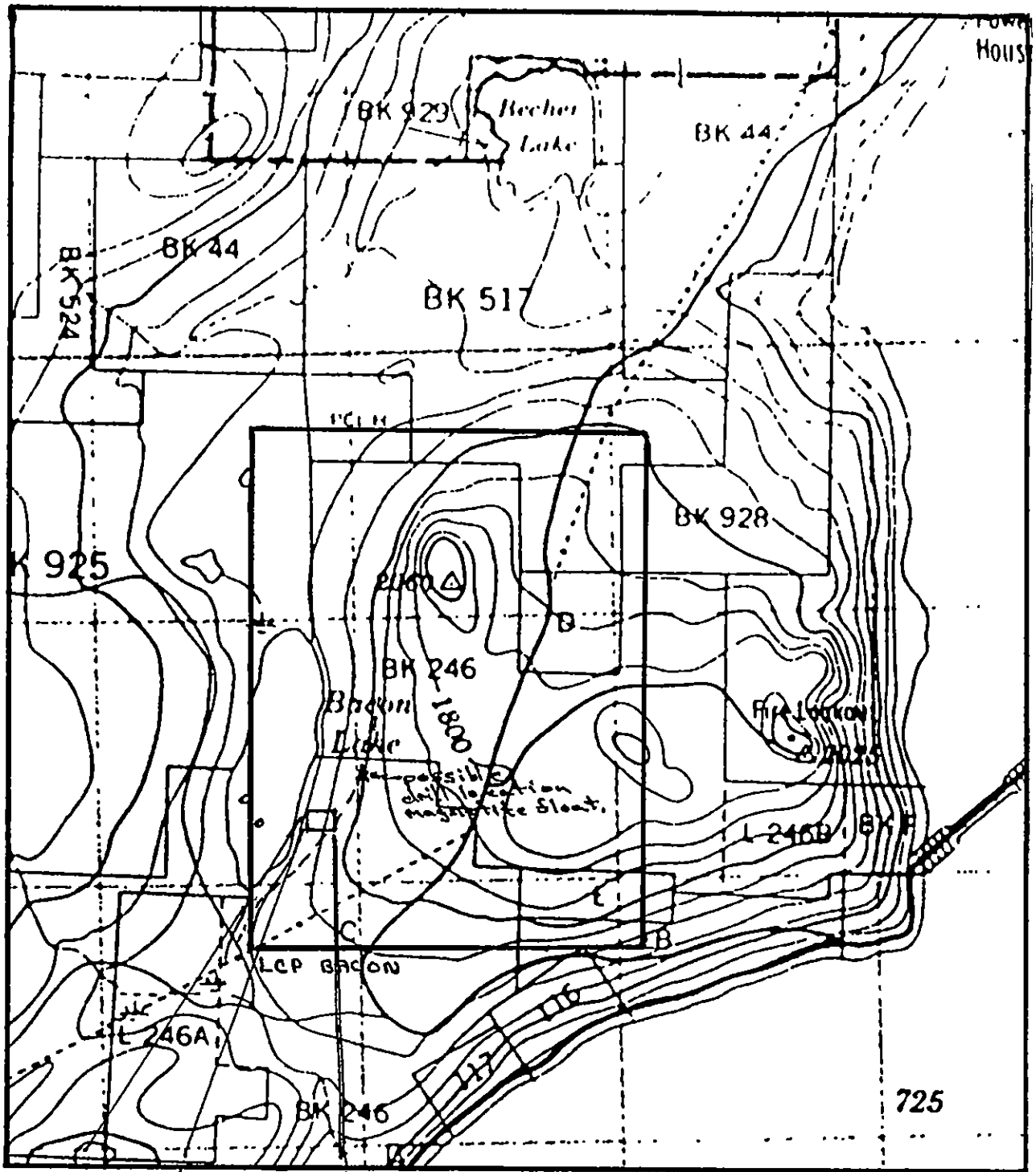
unit is Triassic and/or Jurassic tuff, andesitic volcanic breccia and lava with interbeds of argillite, siltstone and limestone. These are intruded by Jurassic and/or Cretaceous granodiorite, quartz diorite of the Coast Intrusions (Figure 3).

LITHOGEOCHEMISTRY

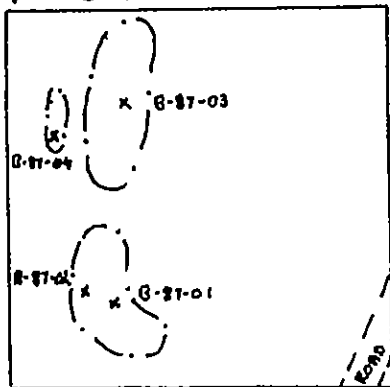
A total of four rock samples were collected from the magnetite skarn and analysed for copper, cobalt, iron, silver and gold (Figure 4). These samples were collected so as to give an indication of mineralization within different portions of the skarn. A description of the rock samples are as follows:

<u>Sample No.</u>	<u>Description</u>
B-87-001	Massive magnetite with eurythrite and possible cobaltite.
B-87-002	Massive magnetite with minor pyrite \pm chalcopyrite and no erythrite.
B-87-003	Epidote-diopside-chlorite skarn with minor magnetite, pyrite \pm chalcopyrite and no erythrite.
B-87-004	Massive pyrite with epidote, chlorite, minor magnetite, and no erythrite.

Sample No. B-87-001 confirmed the presence of cobalt in appreciable amounts (1.08%) along with gold (0.67 oz/ton). The other samples (Nos. B-87-002 and B-87-003) indicate that the cobalt is localized by some mechanism and possibly may be secondary to the magnetite (cobalt values range from 22 to 186 ppm). These samples also show a potential good correlation between cobalt and gold (B-87-002 - 186 ppm Co, 180 ppb Au; B-87-003 - 78 ppm Co, 40 ppb Au; B-87-004, 22 ppm Co, 5 ppb Au).



SKETCH MAP



0 1 2 3 4 5 10
100's of metres

D.J.B. SERVICES LTD.

SAMPLE LOCATIONS
BACON M.C.

NANAIMO M.D. 92F 13 E

July 20 87 DRWN BY DJB FIG 4

○ MASSIVE MAGNETITE
± pyrite, epidote, chlorite, eurythoite

CONCLUSION

While this preliminary survey did not locate the Argonaut diamond drill locations, the presence of cobalt and associated gold was demonstrated (B-87-001 - 1.06% Co and 0.67 oz/t Au).

On the basis of this result, a program of geochemical and magnetic surveys along with geological mapping should be carried out. Should results be successful, then a follow-up program of trenching and diamond drilling would be warranted.

Douglas Browlee

REFERENCES

Muller, J. E. G.S.C. Map 2-1965, Comox Lake Area.

Open Files Selected company reports, B.C. Ministry of Energy, Mines and Petroleum Resources, Geological Division, Open Files 92F.

AUTHOR'S STATEMENT OF QUALIFICATIONS

I, Douglas J. Brownlee, do hereby certify that:

1. I live at 101-2615 Lonsdale Avenue, North Vancouver, B.C.
2. I hold a B.Sc. (Spec. Geology) 1980 from the University of Alberta, Edmonton, Alberta.
3. I have practised my profession as a geologist since 1980.
4. I conducted the work outlined in this report from May 1st to 3rd, 1987.



Douglas J. Brownlee
Geologist

ROSSBACHER LABORATORY LTD.

2225 S. SPRINGER AVENUE
 BURNABY, B.C. V5B 3N1
 TEL : (604) 299 - 6910

CERTIFICATE OF ANALYSIS

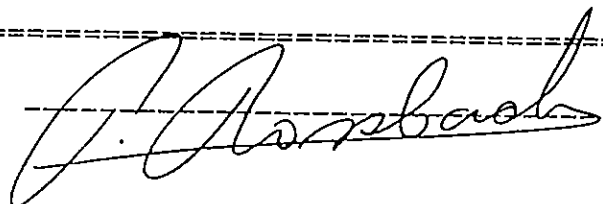
TO : A&M EXPLORATION LTD.
 614-850 W. HASTINGS STREET
 VANCOUVER B.C.

CERTIFICATE#: 87194
 INVOICE#: 7602
 DATE ENTERED: 87-05-07
 FILE NAME: A&M87194
 PAGE # : 1

PROJECT: GUERRA
 TYPE OF ANALYSIS: GEOCHEMICAL

PRE FIX	SAMPLE NAME	PPM Cu	PPM Co	% Fe	PPM Ag	PPM Zn	PPB Au	PPM Cd
A	B-87-001	16	13200	20.0	3.2		21500	
A	B-87-002	600	186	36.5	8.0		280	
A	B-87-003	730	78	16.4	1.0		40	
A	B-87-004	26	22	35.0	0.8		5	
A	ST-87-001	11800			8.4	32400	200	364
A	ST-87-002	28400			12.4	264	20	
A	ST-87-003	23600			16.4	8900	80	
A	ST-87-004	17600			12.0	20000	130	
A	G-87-001	2100			1.4		5	

CERTIFIED BY :



ROSSBACHER LABORATORY LTD.

CERTIFICATE OF ANALYSIS

2225 S. SPRINGER AVENUE
BURNABY, B.C. V5B 3N1
TEL : (604) 299 - 6910

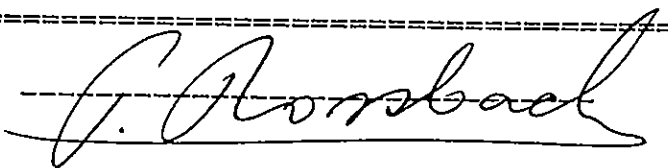
TO : A&M EXPLORATION LTD.
614-850 W. HASTINGS STREET
VANCOUVER B.C.

PROJECT: GUERRA
TYPE OF ANALYSIS: ASSAY

CERTIFICATE#: 87194.A
INVOICE#: 7619
DATE ENTERED: 87-05-21
FILE NAME: A&M87194.A
PAGE # : 1

PRE FIX	SAMPLE NAME	oz/t Au	% Co
A	B-87-001	0.627	1.08

CERTIFIED BY :



STATEMENT OF COSTS

Personnel: Mobilization and Fieldwork

D. J. Brownlee, Geologist May 1-3, 1987	3 days @ \$150/day	\$450.00
M. Sawiuk, Geologist May 2, 1987	1 day @ \$150/day	150.00
R. Gosse, Geologist May 2, 1987	1 day @ \$150/day	150.00

Field Expenses

Ferry	1 vehicle, 3 people 2 trips @ \$29/trip	\$ 58.00
Accommodations	2 nights @ \$56/night	112.00
Meals	5 man-days @ \$25/day	125.00
Vehicle rental	3 days @ \$30/day	90.00
Fuel		63.00

Lithogeochemistry

4 analysis for 4 elements @ \$3.70	14.80
1 geochem for Au @ \$4.00	4.00
1 Au assay and 1 Co assay @ \$6	12.00
4 preparations @ \$3	12.00

Report

Preparation and typing	<u>\$150.00</u>
------------------------	-----------------

GRAND TOTAL \$1,390.80

Douglas J. Brownlee