

87-561-16415 09/88

LOG NO: 0111	RD.
ACTION: Date received report back from amendments	
FILE NO:	

REPORT ON THE
 LAST CHANCE GROUP
 SLOCAN MINING DIVISION
 KOOTENAY LAND DIVISION

N. Lat. 49 55'

W. Long 117 04'

82F/14E

CONTENTS

	<u>PAGE</u>
Introduction	1
Summary and Conclusions	1
Location	1
Location Map <i>TOPO MAP</i>	2
Claims	3
History	3
Mineralized Section <i>COLLAR LOCATION</i>	4
DDH logs	5-6
Certificate	7

FILMED

by

Mike Linn, B.Sc., Geologist
 Box 422,
 Kaslo, B. C.,
 VOG 1M0

June 24, 1987

**GEOLOGICAL BRANCH
ASSESSMENT REPORT**

16,415

INTRODUCTION:

This report was prepared at the request of the owners who drilled a 124 foot NQ size diamond drill hole on the property in June, 1987.

Summary and Conclusions;

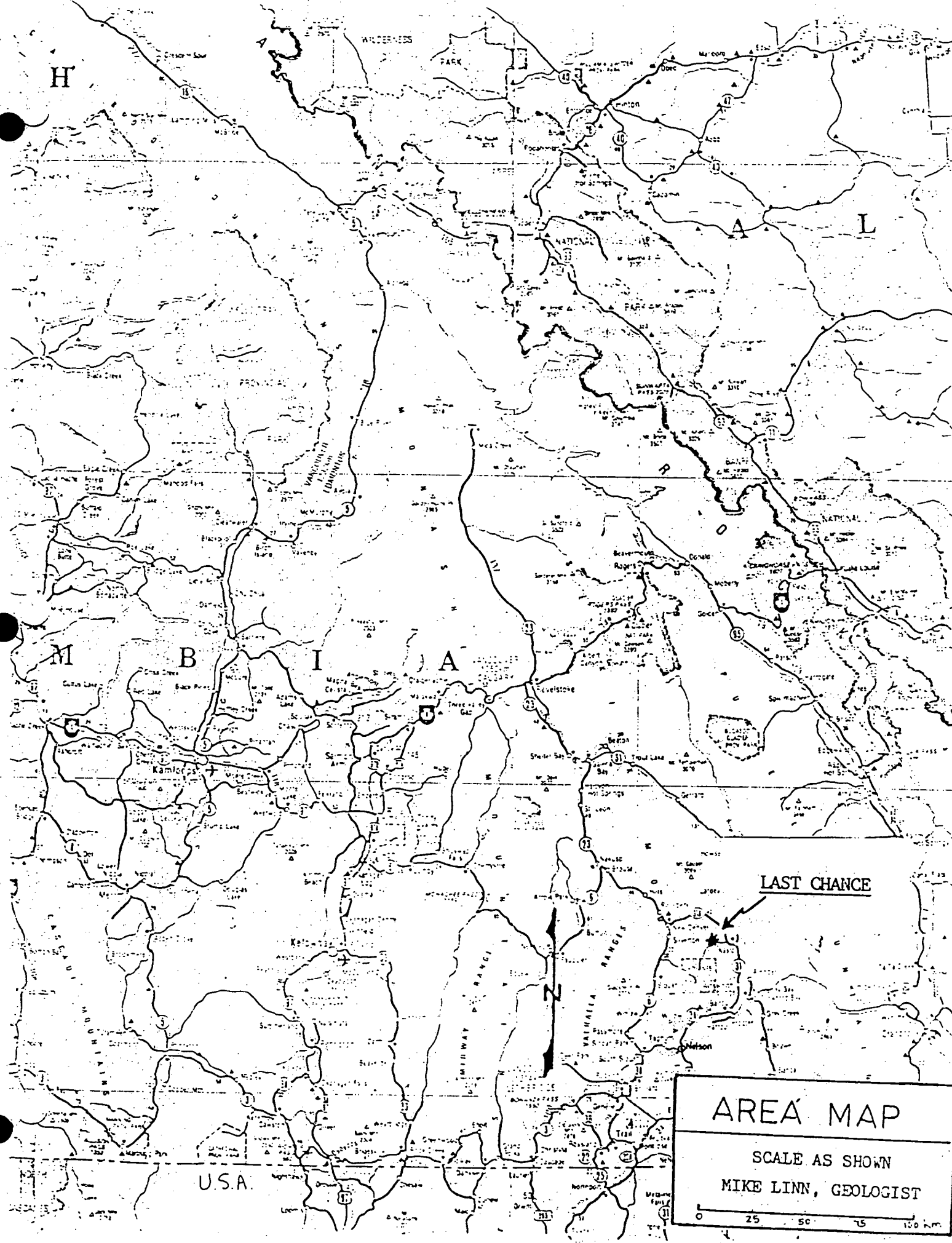
The DDH intersected a 4 to 5 foot section of good sulphides, and shows an interesting assemblage of rock types. Slocan Series sediments present include argillite, limy argillite grading to argilitic limestone, and siliceous argillite. A limy granodiorite porphyry was intersected from 67 1/2 to 86 1/2 feet and again on the footwall side of the mineral zone from 106 1/2 to 115 feet.

This mineralogy represents an excellent host for ore deposits and shows enough signs to warrant further exploration. No assays were done. The core is stored at the home of Don Leslie in Kaslo.

Location;

The property is located on the northwest side of Keen Creek, the major tributary of Kaslo River approximately 7 miles west of Kaslo, on the west shore of Kootenay Lake.

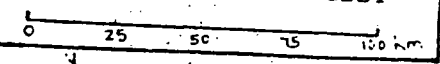
Access to the property is excellent. The Kokanee Glacier Park access gravel road leaves the Kaslo-New Denver paved highway 31A approximately 4 miles west of Kaslo and follows up Keen Creek valley. The road into the property branches from the Kokanee Glacier Park road at about 4.5 miles from highway 31A. The Department of Highways maintains the access road during the summer months.



LAST CHANCE

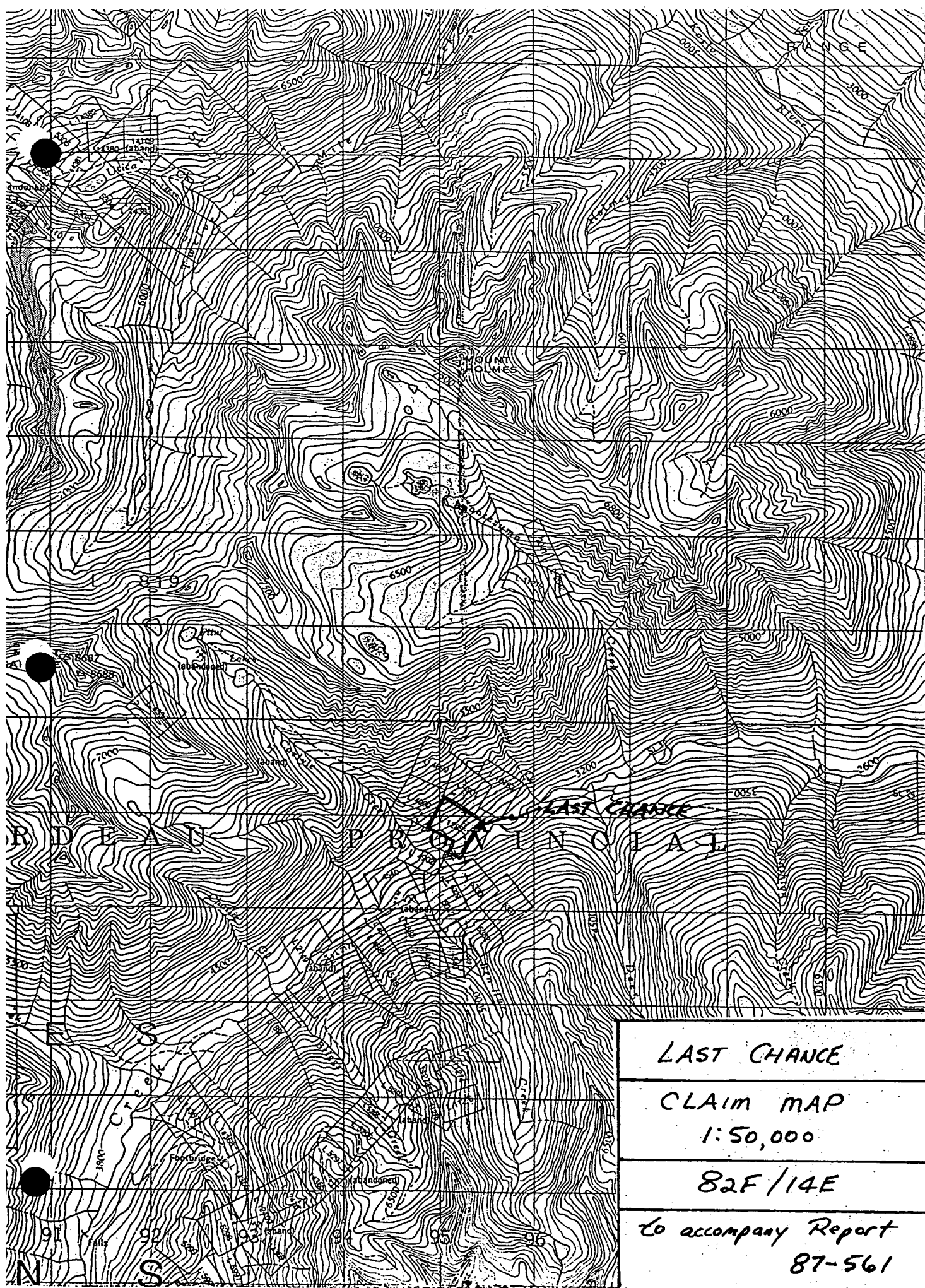
AREA MAP

SCALE AS SHOWN
MIKE LINN, GEOLOGIST



2A

5537000m N.
36
35
34
33
32
31
30
55'
29
28
27

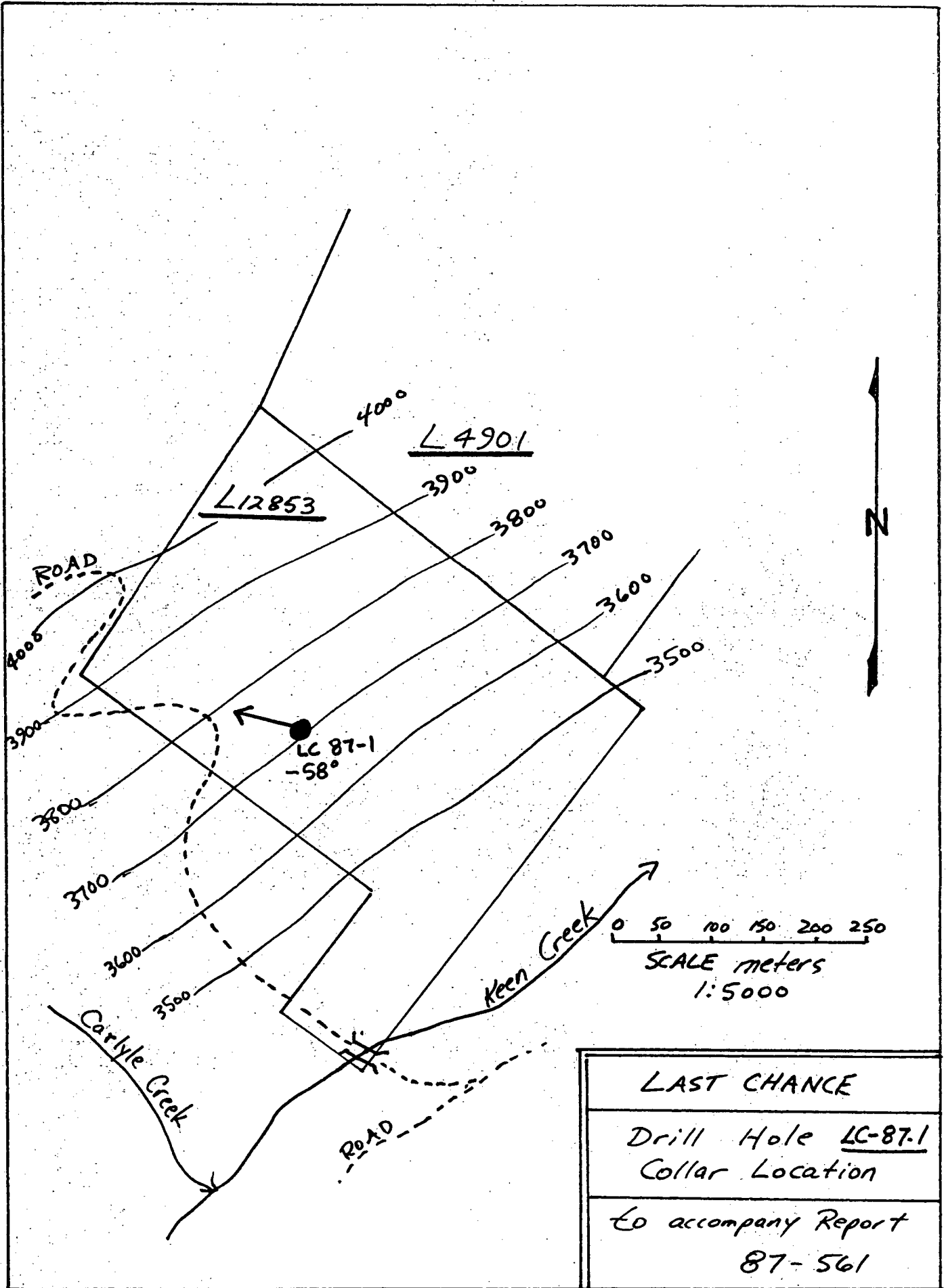


LAST CHANCE

CLAIM MAP
1:50,000

82F/14E

to accompany Report
87-561



LAST CHANCE
Drill Hole <u>LC-87.1</u> Collar Location
To accompany Report 87-561

Claims;

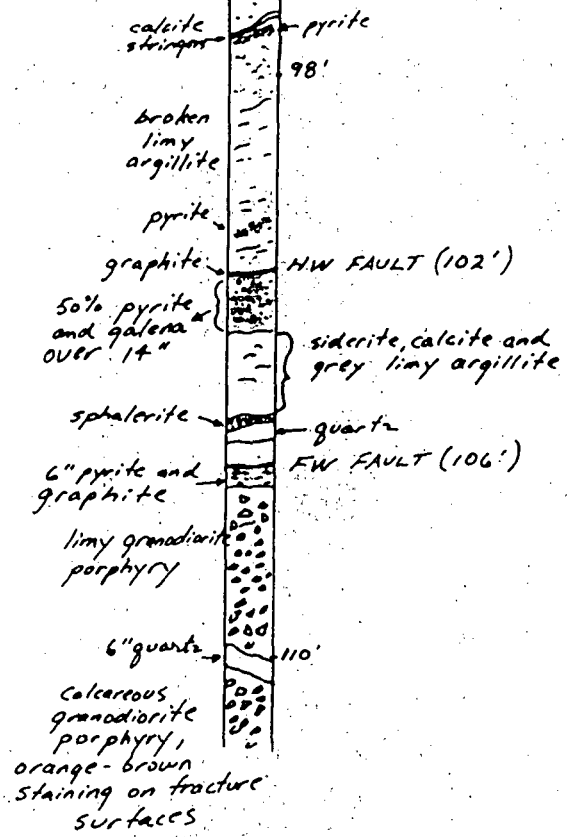
The property consists of 4 reverted crown granted mineral claims and 5 claims held by location.

<u>Claim name</u>	<u>Lot No.</u>	<u>RECORD NO.</u>
Manhattan	L4540	1025
Mastadon	L4902	18108M
Last Chance	L12853	18129M
Black Bear	L10783	18109M
Chance 1-5		1421-1425

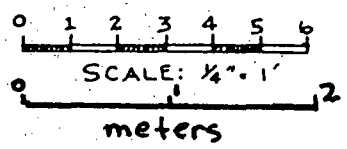
HISTORY:

From April to September 1979, mining was carried out on the Last Chance claim by Keen Creek Developments Ltd., from the 3700 and 3800 levels on an ore shoot approximately 100 feet long and averaging 8 feet wide. About 1600 tons were mined from this shoot and the broken muck stock-piled on the property. The muck was sampled by David Minerals engineer and the grade from all muck samples averaged .009 oz. Au., 1.95 oz. Ag., 0.95 percent Pb., 19.49 percent Zn., 0.16 percent Cd., and 14.28 percent Fe. per ton.

A new adit was collared at the 3600 level, approximately 100 feet below the former workings, and was driven 240 feet to intersect the hangingwall of the main shear zone. Two test holes were drilled ahead of the face and the shear zone width was determined to be 28 feet. No economic mineralization was encountered in the adit or the test holes.



DDH LC 87-1
NO ASSAYS DONE



DIAMOND DRILL MINERALIZED SECTION		
SCALE: 1/4" = 1'	APPROVED BY	DRAWN BY
DATE: JUNE 24/87		M.J. LINN B.S.
LAST CHANCE PROPERTY		
DDH LC 87-1		DRAWING NUMBER

DRILL HOLE RECORD

Property LAST CHANCE District SLOCAN Hole No. LC-87-1
 Commenced _____ Location KEEN CREEK Tests at _____ Hor. Comp. _____
 Completed _____ Core Size NQ Core Dip. -58° Vert. Comp. _____
 Co-ordinates 3700' on L12853 True Brg. Az. 285° Logged by M. J. LINN
 Objective Note: _____ % Recov. _____ Date JUNE 24/87

Chain
 T. Brg.
 Collar Dip

Footage From	To	Description	Metric Length	Analysis
0	20	CASING, no core	0-6m.	
20	25½	Argillite, dark grey with brown orange staining on fracture surfaces. Poorly defined bedding at 30° with core axis	6-7½m.	
25½	45	Grey argillitic limestone, bedding at 30°-40° with core axis. Calcite stringers at 27'. Heavily fractured and broken up from 31'-44'. Slightly greenish color to limestone 44-45'.	7½-14½m.	
45	67½	Massive poorly bedded argillite, dark grey to greenish. Some calcite stringers and fracture fillings. Brown-orange oxidation on fracture surfaces.	14½-20m.	
67½	86½	Calcareous granitic porphyry, ^{breccia} 40-60 light and dark minerals. White to light green feldspars from ⅛" to ¼", poorly crystallized. Minor pyrite, micas abundant. Probably a granodiorite.	20-26½m.	
86½	96¼	Interbedded siliceous and limy argillite. Limestone at 91'. Calcite stringers up to ¼" wide. Disseminated pyrite, minor sphalerite at 95½'.	26½-29½m.	
96¼	102	Broken up limy argillite and limestone, pyrite and calcite stringers throughout. Heavy pyrite at 97' with weathered fractured zone.	29½-31m.	

DRILL HOLE RECORD

Property _____ District SLOCAN Hole No. LC-87-1
 Commenced June 1987 Location Keen Creek Tests at _____ Hor. Comp. _____
 Completed June 1987 Core Size NQ Core. Dip. -58° Vert. Comp. _____
 Co-ordinates 3700' on L12853 True Brg. _____ Logged by M. J. LINN
 Objective Note: _____ % Recov. _____ Date June 24/87

C. 114
 T. 583
 101148 01P

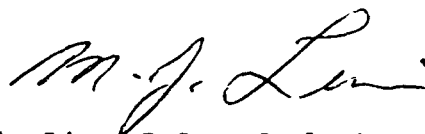
Footage From	To	Description	METRIC Length	Analysis
102	102	Graphite on HW.		
102	106	Mineralized zone of pyrite, galena and sphalerite. 30% of zone is light cream colored siderite. Some grey argillite. The zone is calcareous throughout. 4" of quartz at 105'. Best zone of pyrite, galena and minor sphalerite at 102-103'. 1/2" sphalerite at 105'.	31-32 1/3 m.	
106	106 1/2	Graphitic F.W. with good pyrite and graphite. Broken up.	32 1/3 m.	
106 1/2	115	Granodiorite porphyry with 6" quartz at 110'. HW. quartz contact at 65° with core axis. Highly calcareous zone with orange-brown staining on fracture surfaces.	32 1/3 - 35 m.	
115	122	Quartz vein with minor sulphides. 120'-121' good pyrite. Some porphyry at 119 1/2'.	35-37 m.	
122	124	Argillitic limestone, green-grey to cream colored 122-123, Then grey 123-124	37-37 2/3 m.	
124		EOH		(no assays done)

CERTIFICATION

I, Michael Joseph Linn, of the Village of Kaslo, Province of British Columbia, certify as follows.

1. I am an independent consulting Geologist with an office at 660 Arena Avenue, Kaslo, and a mailing address of Box 422, Kaslo, B.C., VOG 1M0.
2. I graduated with a degree of Bachelor of Science, Major in Geology, from the University of British Columbia in 1970.
3. I have practiced my profession for 17 years.
4. This report dated 24 day of June, 1987, is based on my personal examination of the property.
5. I do hereby give permission to the owner(s) and optionee(s) to use this report in any prospectus or statement of material fact.

DATED at Kaslo, Province of British Columbia, this 24 day of June, 1987



Mike Linn, B.Sc., Geologist

