

LOG NO: 1130

RD.

SECTION:

FILE NO:

87-814-16481

5/88

A

DIAMOND DRILLING REPORT

ON

THE TOM #1 MINERAL CLAIM

NICOLA MINING DIVISION

LAT. 50° 25' N

Long 120° 50.9' W

N.T.S. 92 I/7W

FOR

Owner/Operator: ROBERT L. CURNOW

BY

FILMED

JAMES F. BRISTOW

RICHMOND, B.C.

JULY 1987

GEOLOGICAL BRANCH
ASSESSMENT REPORT

16,481

A
DIAMOND DRILLING REPORT
ON
THE TOM #1 MINERAL CLAIM

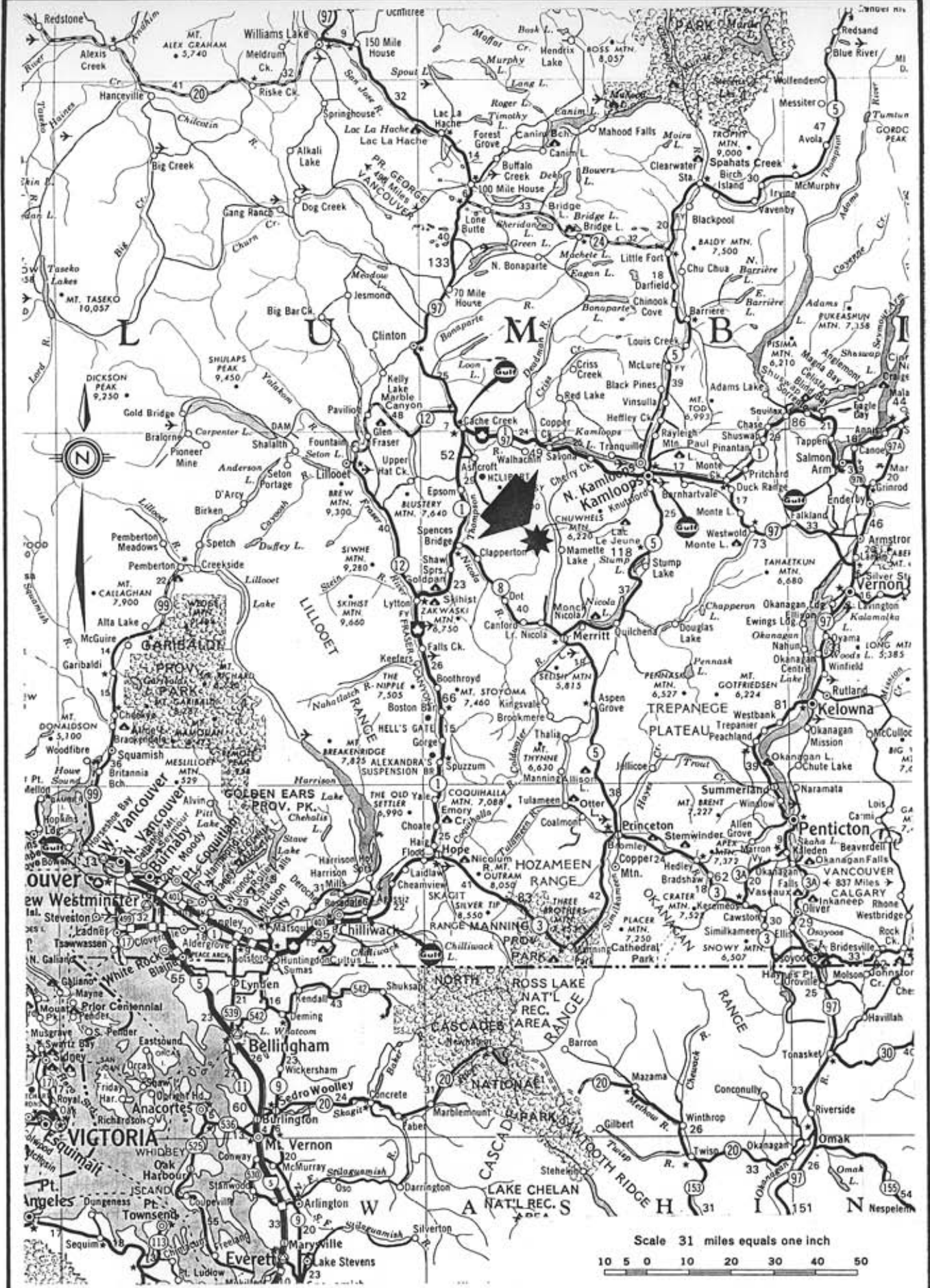
TABLE OF CONTENTS

Index Map-----	1
Terms of Reference-----	2
Summary -----	2
Introduction -----	2
Location and Access-----	2
Location Map -----	3
History -----	4
Property Discription -----	4
Claim Map -----	5
Discussion -----	6
Cost Statement -----	7
Author's Qualifications & Certification-----	8
Appendix -----	9

Assay Certificates

In Pocket-

Diamond Drill Log
Diamond Drill Hole Plan



Drawn By J. F. B.
 Date July 1987

TOM # 1
INDEX MAP

Scale 1:63,360
 Figure 1

A
DIAMOND DRILLING REPORT
ON
THE TOM #1 MINERAL CLAIM

TERMS OF REFERENCE

The writer was commissioned by Leslie Curnow to;

- (1) Visit the Tom #1 Mineral Claim (Fiddler Property) and examine the site of Diamond Drill Hole T-1.
- (2) Log the drill core from the above Diamond Drill Hole and prepare a Diamond Drilling Report for Assessment Credits.

SUMMARY

One NQ size wireline diamond drill hole totalling 53.95 metres (177 ft.) was drilled on the Tom #1 Mineral Claim. This diamond drill hole intersected diorite and granodiorite sparsely mineralized with molybdenite and chalcopyrite. Three intervals were selected for gold/silver assays and one interval was also assayed for copper. Gold/silver results were negative.

Cost of the drilling programme was in excess of \$5000.00

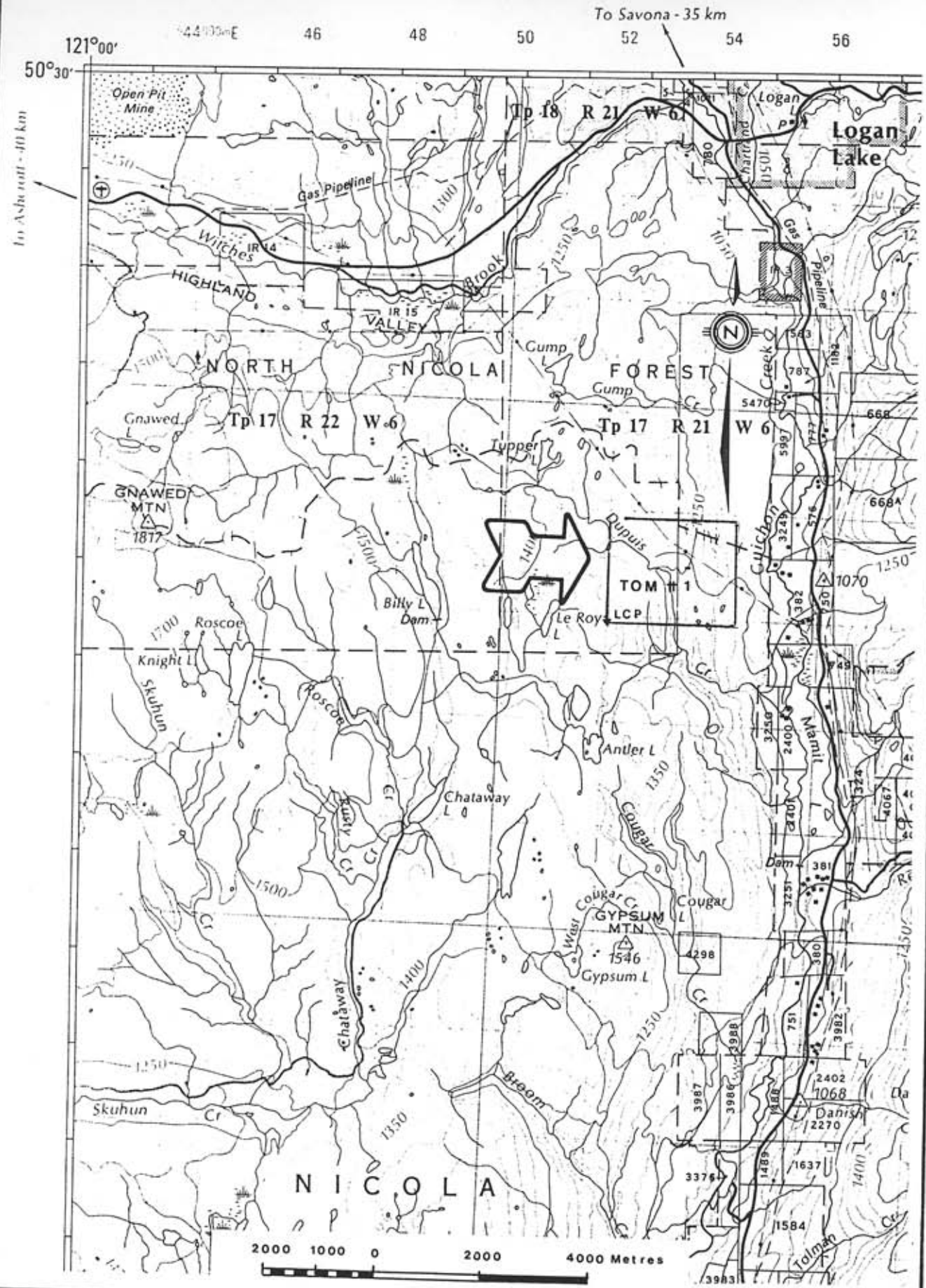
INTRODUCTION

This report contains the results obtained from 53.95 metres (177 ft.) of NQ wireline diamond drilling conducted on the Tom #1 Mineral Claim, between May 15 and May 21, 1986, by H. Allan Diamond Drilling Ltd. of Merritt, British Columbia.

LOCATION AND ACCESS

The property is located north west of the north end Mamit Lake, north of Gypsum Mountain and straddles Dupius Creek.

Normal access is by 4 wheel drive vehicles proceeding west from Merritt on No. 8 Highway to the Mamit Lake road, then north for approximately 32 kilometres to the B.C. Hydro substation at the north end of Mamit Lake. The claim access road proceeds west across Mamit Lake Valley following the power line for approximately 1.5 kilometres to the centre of the claim block. (See Figures 1, 2 & 3)



Drawn By J. F. B.
 Date July 1987

**TOM # 1
 LOCATION MAP**

Scale 1: 100,000
 Figure 2

HISTORY

Since 1915 the general locality of the Tom #1 Claim has been the focus of sporadic intensive exploration activity.

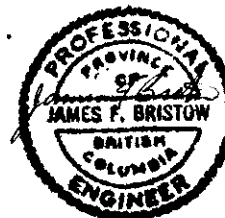
The following partial chronological summary of activity was compiled from several B.C. Dept. of Mines reports;

- 1915 - Black Bluff property new test pits were sampled by Cockfield.
- 1956/57 - Fiddler prospect explored by Anuwon Uranium Mines.
- 1959 - Contiguous J.B. claims explored by Northwestern Explorations Limited.
- 1965 - Property prospected by Consolidated Skeena Mines Ltd.
- 1965/68 - Aug & Cal claims - exploration work continued under the direction of Cannoo Mines Ltd.
- 1986/87 - Tom #1 claim, 177 ft. diamond drilling completed in conjunction with limited pit resampling.

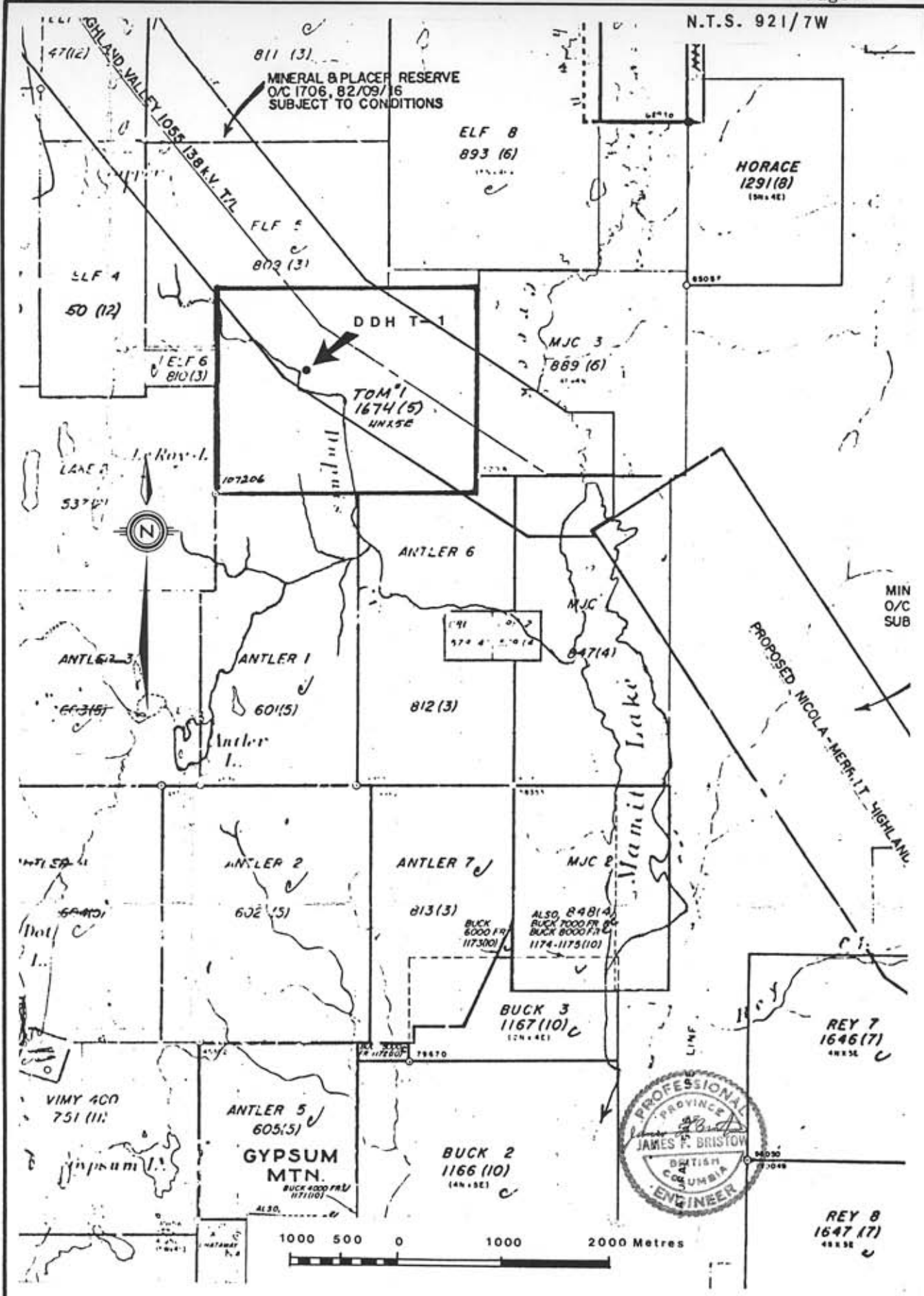
PROPERTY DESCRIPTION

Ministry of Energy Mines & Petroleum Resources "G" form on record at the Mining Recorder's office in Merritt, B.C., May 1, 1987 show the statistics of the Tom #1 claim as follows: (see Figure 3)

CLAIM NAME	NO. OF UNITS	RECORD NO.	MONTH OF RECORD
Tom #1	20	1674	05



N.T.S. 921/7W



Drawn By J.F.B.
 Date July 1987

**TOM # 1
 CLAIM MAP**

Scale 1:50,000
 Figure 3

DISCUSSION

The general geology of the region shows it to be underlain by the Lower Jurassic Guichon Batholith. This is a multi stage acidic intrusive lying within an area bounding by Guichon Creek and the Thompson and Nicola Rivers. This intrusive is composed mainly of granites and granodiorite with porphyritic, pegmatitic, gabbroic and gneissic mafic phases.

The showings visited appear to be located near the boundary between the Guichon Batholith and granitized and hornfelsed metasedimentary rocks. In this eastern boarder area, the boarder phase of the batholith appears to be much narrower than at Craigmont Mines located approximately 20 kilometre to the south.

The purpose of drill hole T-1 was to test for gold/silver mineralization below a pegmatitic gasson zone in a north easterly trending trench previously tested by a single diamond drill hole for copper values.

Diamond Drill Hole T-1 intersected the previous drill hole between 89 - 91 feet at an angle of 10 degrees to 15 degrees to the Core Axis (C.A.). The previous Drill hole is BQ in size, however, all additional information appears to have been lost to antiquity.

Drill Hole T-1 intersected mainly Diorite from 0.61 to 21.03 and 36.50 to 53.95 metres and Granodiorite from 21.03 to 36.58 metres.

The sulphide mineralization present appears to be associated with pegmatitic veining and patchy k-feldspar flooding.

The three samples selected from Diamond Drill Hole T-1 gave negative gold/silver results, however this minimal test is not necessarily indicative of the entire Fiddler prospect.

The location of Drill Hole T-1 with respect to the location of the Tom #1 legal corner post was supplied by L.R. Curnow and was used to prepare a Diamond Drill Hole Plan (see Figure 4).

The Diamond Drill core from T-1 is currently stored in Better Resources Limited's core storage sheds on Coldwater Road approximately one kilometre south of Merritt, British Columbia.



COST STATEMENT

TOM #1 MINERAL CLAIM

Property Examination & Core logging

James F. Bristow, P. Eng.

May 3 (1/2) 5 (1/2) 1987

1 day @ \$250.00/day \$250.00

Travel Expenses

Vehicle Richmond - Merritt - Tom #1 - Merritt

278 km @ \$.38/km 105.04

Accommodations & Meals 49.00 154.64

Supervision, Drillsite preparation, Core Splitting and Storage

L. Curnow

May 15 to May 21 (1/2) 1986

3 days @ \$100.00/day 300.00

Travel Expenses

Vehicle (Six round trips Merritt/Tom #1)

384 km @ \$.38/km 145.92

Diamond Drilling

H. Allen Diamond Drilling Ltd.

Mobilization & Demobilization 300.00

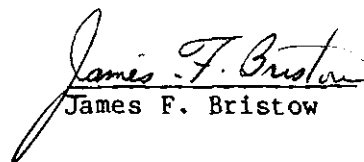
177 ft. (53.95) @ \$20.00/ft. 3540.00 3840.00

Assaying

3 samples @ \$15.00 (Gold, Silver, Copper) 45.00

Report Preparation (including Drafting, Typing etc) 350.00TOTAL: \$5805.56

CERTIFIED CORRECT



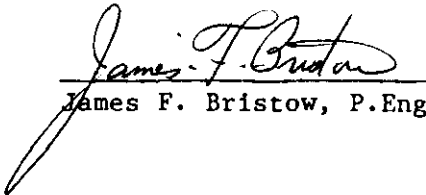
James F. Bristow

QUALIFICATIONS AND CERTIFICATION

I, James F. Bristow, of 3431 Bowen Drive, in the Municipality of Richmond, Province of British Columbia, hereby certify as follows:

- 1) I am a graduate of the University of British Columbia with a B.A. Degree (Geology and Physics).
- 2) I am a Professional Engineer registered in the Province of British Columbia.
- 3) I am a member of the Association of Exploration Geochemists, the Geological Society of South Africa and the Canadian Institute of Mining and Metallurgy.
- 4) I have actively practiced my profession in mineral exploration and mining geology since my graduation in 1957.
- 5) That this report is based on data gathered by myself and or my personal observations.
- 6) That I have no direct or indirect interest in the Tom #1 Mineral Claim nor do I expect to have any interest in this property.

Dated at Richmond, British Columbia this 15th day of July, 1987.


James F. Bristow, P.Eng.

APPENDIX

ASSAY CERTIFICATE



KAMLOOPS RESEARCH & ASSAY LABORATORY LTD.

912 - 1 LAVAL CRESCENT — KAMLOOPS, B.C.
V2C 5P5

PHONE: (604) 372-2784 — TELEX: 048-8320

CERTIFICATE OF ASSAY

B.C. LICENSED ASSAYERS
GEOCHEMICAL ANALYSTS
METALLURGISTS

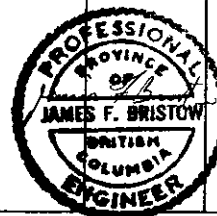
TO Mr. Leslie Curnow
Box 1207,
merritt, B.C. VOK 2B0

Certificate No. K 7424

Date May 26, 1986

I hereby certify that the following are the results of assays made by us upon the herein described _____ samples

Kral No.	Marked	Au ozs/ton	Ag ozs/ton	Cu percent				
1	1A	L.001	.01	-				
2	2A	L.001	L.01	-				
3	3A	L.001	L.01	.05				
L means "less than"								



NOTE:
Rejects retained three weeks.
Pulps retained three months
unless otherwise arranged.

Hole 177' deep.

Quack A. Stumell

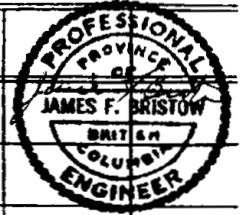
Registered Assayer, Province of British Columbia

DIAMOND DRILL CORE LOG — SAMPLE RECORD

DEPTH	DIP	BEARING AST.
COLLAR	-60°	060° A ₃

PROPERTY Tom #1 (Fiddler) CLAIM Tom #1
 LATITUDE STARTED MAY 15 1986
 DEPARTURE FINISHED MAY 21 1986
 ELEVATION TOTAL LENGTH 53.95 meters (177 ft)

LOGGED BY J.F.B
 CORE SIZE NQ
 SECTION
 HOLE NO. T-1



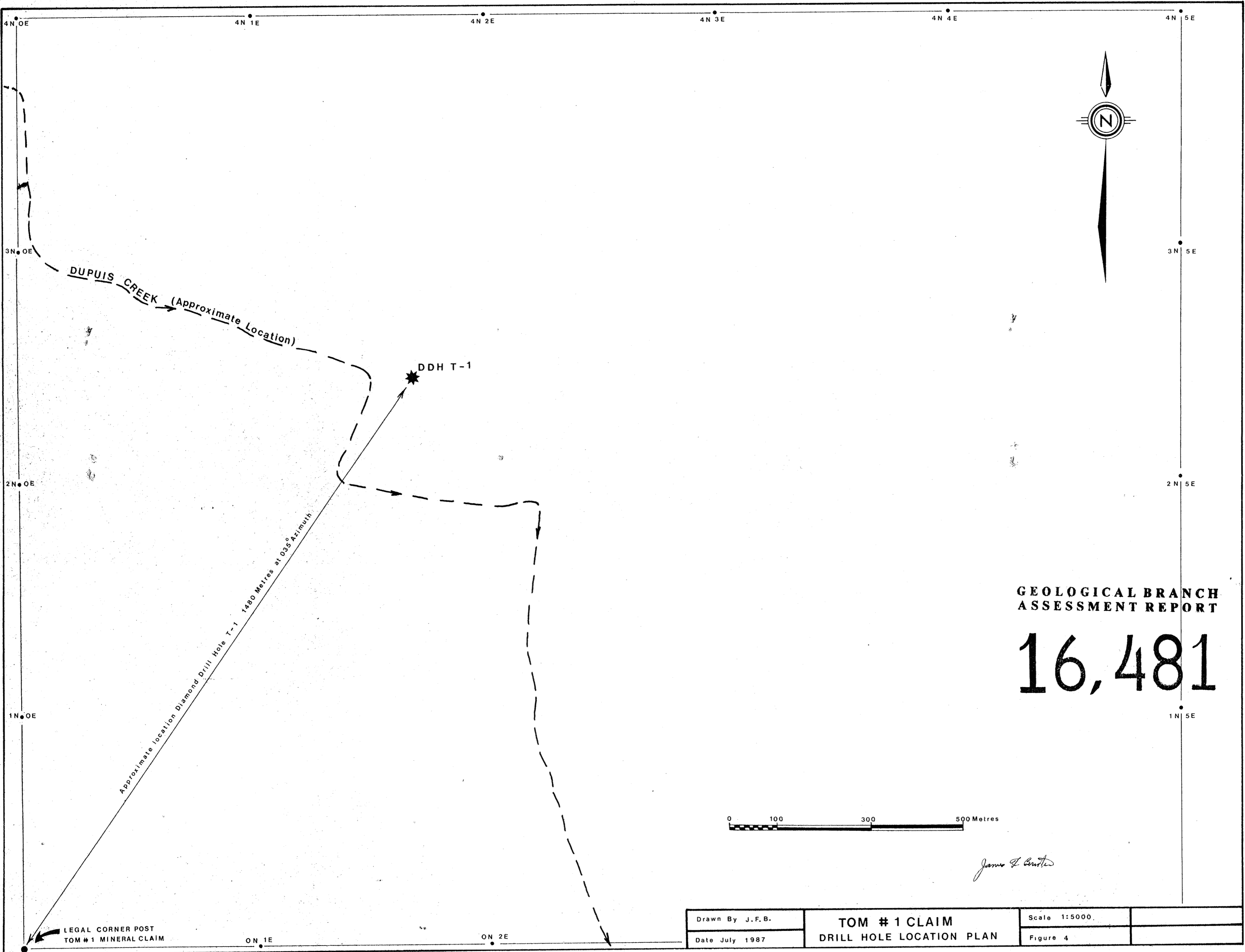
Footage	DESCRIPTION	MINERALIZATION	Sample	From	To	Length ft	Copper %	Mo %	Gold Oz.	Silver Oz.
0 (0)	OVERBURDEN									
0.61 (0.61)	Mainly weathered dioritic rubble									
2 (2.44)	Mainly Diorite									
4.03 (4.03)	medium grained, equigranular qtz - biotite - hornblend. 35 to 40% mafic minerals 28.5' to 35' occasional veinlet and patch of K-feldspar Predominant Joint sets 60°; 45° & 20° To Core AXIS (C.A.) Vague gneissic texture at 36'									
9 (9.58)	Granodiorite - medium to coarse grained 10-15% K-feldspar 15-20% mafic pegmatitic veinlets associated	occasional grain chalcopyrite throughout less than 0.2% Cu	1A	63.0	68.0	5.0	—		2.001	0.01

DIAMOND DRILL CORE LOG — SAMPLE RECORD

PROPERTY Tom # 1 (FIDLER)

HOLE No. T-1 Page No. 2/2

Footage	DESCRIPTION	MINERALIZATION	Sample	From	To	Length	Copper %	Mo %	Gold Oz.	Silver Oz.
	with K-feldspar flooding @ 69-69.8', 70.2-70.5' & 98-98.2'									
	* 89-91 BQ Diamond Drill Hole cuts core @ 10° to 15° to CIA. Badly broken & sheared core									
	94-96; 100-103 & 112-113.5									
20 (36.58) 3.25) 177	Diorite - Mainly medium grained quartz diorite. 30-35% mafics									
	128-137' K-feldspar flooding	± 0.2% Cu	2A	133	138	5.0	-		2.001	2.01
	133-134; 137-139 fine grained mafic diorite									
	153-154 crushed vuggy - chloritic alteration - minor chloropyrite and Mo @ upper contact.									
	156-167; 170-177; 20 to 25% mafic minerals. 1/8" to 1/4" pegmatitic veinlets cut core every foot; increase in sulphides associated with decrease in mafics & increase in K-feldspar		3A	172	177	5.0	0.05		2.001	2.01
	D.D.H. ENDS @ 177 ft.									



DUPUIS CREEK (Approximate Location)

DDH T-1

Approximate location Diamond Drill Hole T-1 1480 Metres at 035° Azimuth

GEOLOGICAL BRANCH
ASSESSMENT REPORT

16,481

James F. Burtis

Drawn By J.F.B.	TOM # 1 CLAIM DRILL HOLE LOCATION PLAN	Scale 1:5000.
Date July 1987		Figure 4

LEGAL CORNER POST
TOM # 1 MINERAL CLAIM