

LOG NO: 1118	MR.	RD.
ACTION: 24pp		
FREQUENCY 87-762-16568		

ASSESSMENT REPORT ON GEOCHEMICAL

CONDUCTED ON

THE BBR-2 & GBI MINERAL CLAIM

OMINECA MINING DIVISION

NTS 93K/16W

9/88

LAT. 54° 55' N

LONG. 124° 22' 06" W

FILMED

THE OWNER AND OPERATORS OF THE CLAIMS ARE:

BIG BAR ~~GOLD CORP.~~ RESOURCES
BOX 157
ASHCROFT, B.C.
VOK 1A0

WHO HAVE OTHER CLAIMS ADJOINING IN THE AREA WHICH ARE

GROUPED AS FOLLOWS:

BBR 1 - 4 INC and GBI
FOR A TOTAL OF 65 UNITS

THE AUTHOR OF THIS REPORT IS:

J.S. CARTER, GEOLOGIST
4019 DALARNA BAY N.W.
CALGARY, ALBERTA
T3A 1G8
PHONE: (403) 288-8622

DATE REPORT SUBMITTED: OCTOBER, 1987.

16,568

GEOLOGICAL BRANCH
ASSESSMENT REPORT

TABLE OF CONTENTS

		PAGE NO.
1)	LOCATION MAPS	1 - 4
2)	INTRODUCTION	5
3)	HISTORY OF EXPLORATION	6
	a) SAMPLING	
	b) SUMMARY	
4)	GEOCHEMICAL SURVEY LINES	7 & 8
5)	TECHNICAL DATA	9 - 18
6)	COST STATEMENT	19 & 20
7)	AUTHOR'S QUALIFICATIONS	21
8)	ASSESSMENT REPORT TITLE	
	PAGE & SUMMARY	22 & 23



LEGEND

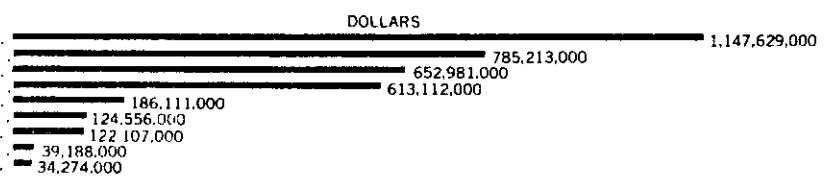
SCALE 1" = 120 MILES

Sedimentary rocks with some volcanic rocks and gabbro sills, flat-lying to partly deformed

Sedimentary rocks with some volcanic rocks and gabbro sills, slightly deformed to strongly deformed and metamorphosed

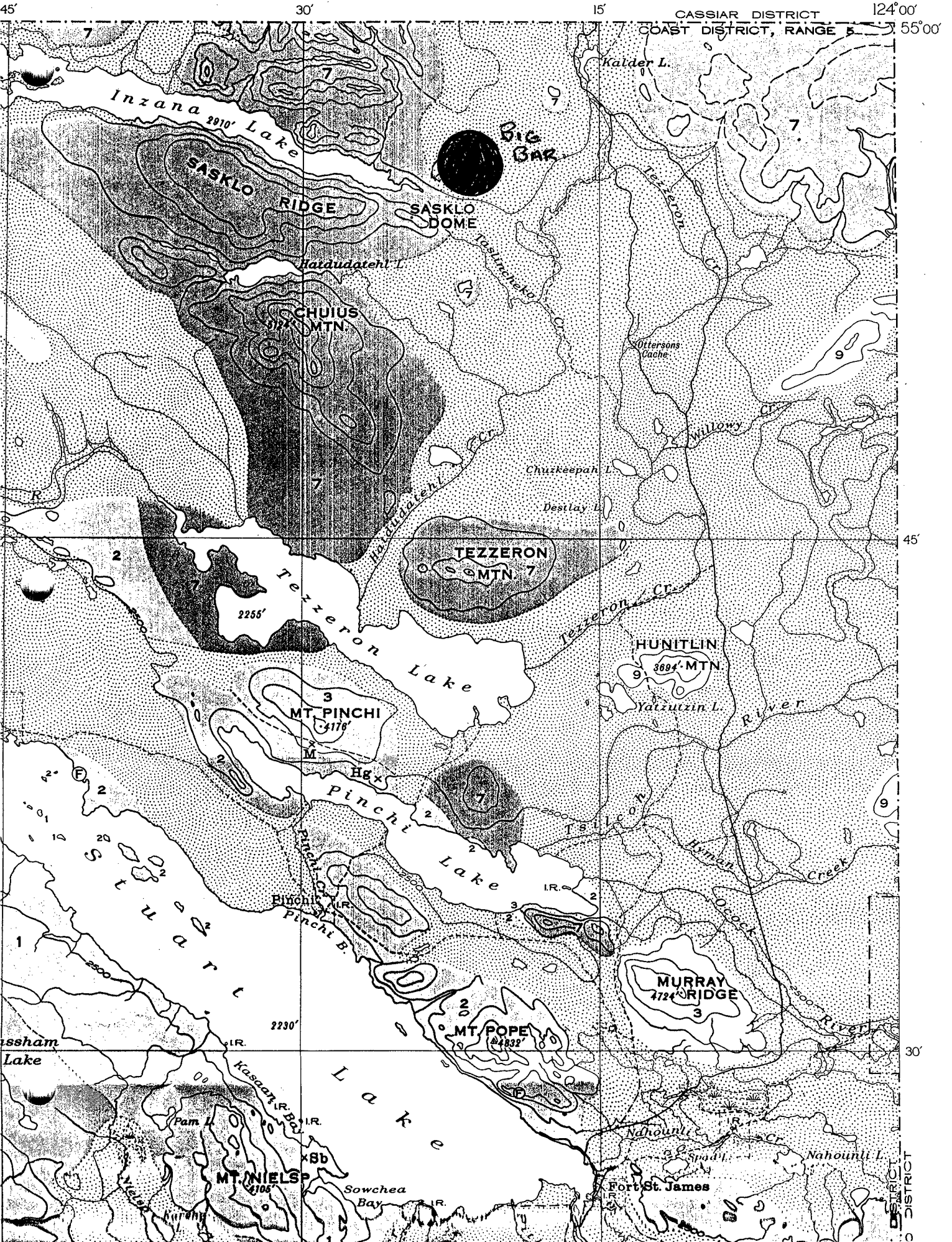
METALLIC MINERALS

- COPPER
- NICKEL
- ZINC
- IRON ORE
- GOLD
- LEAD
- SILVER
- MOLYBDENUM
- PLATINUM GROUP



MINERAL PRODUCTION OF CANADA, 1973

Scale 1" = 4 Miles,



INZANA

LAKE

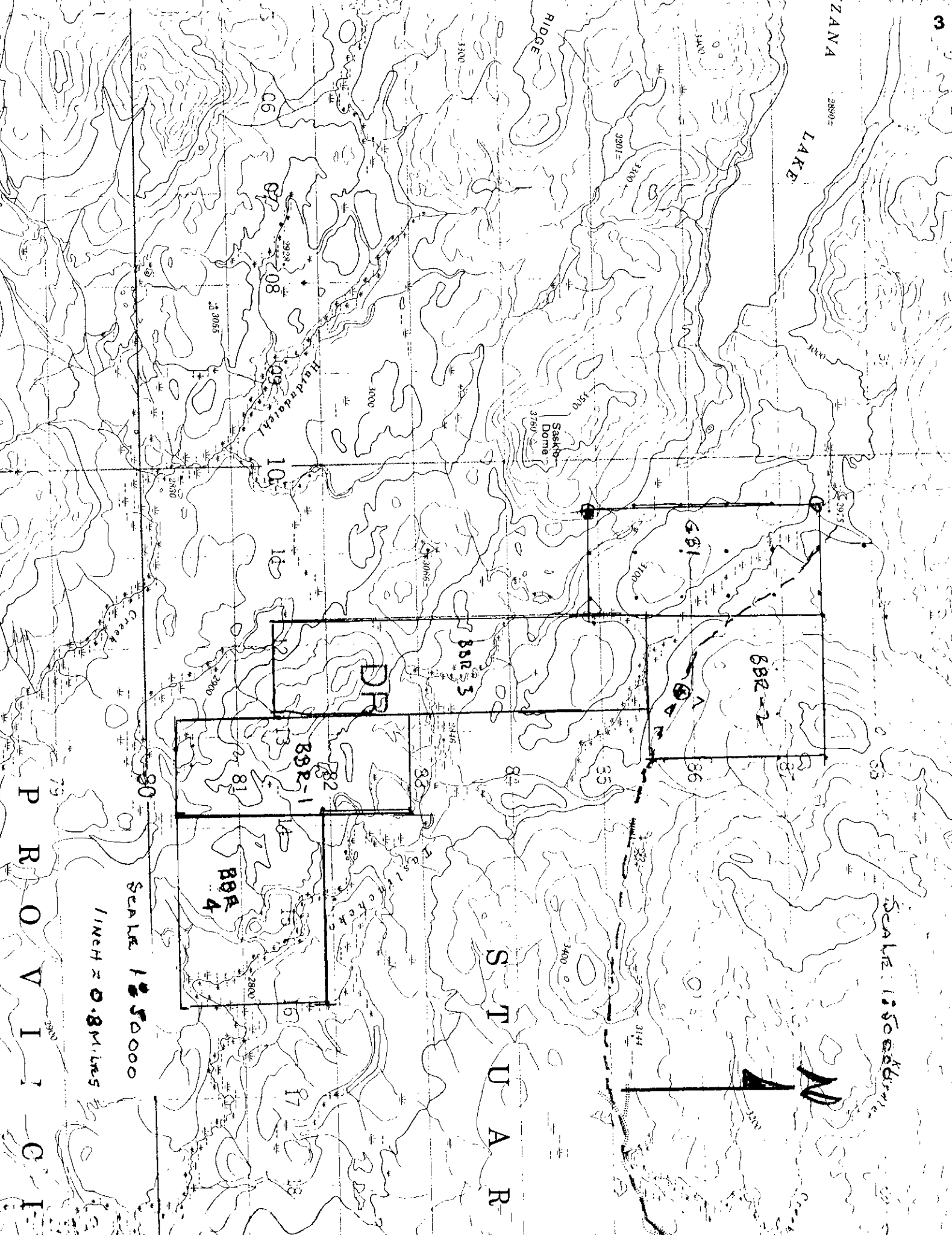
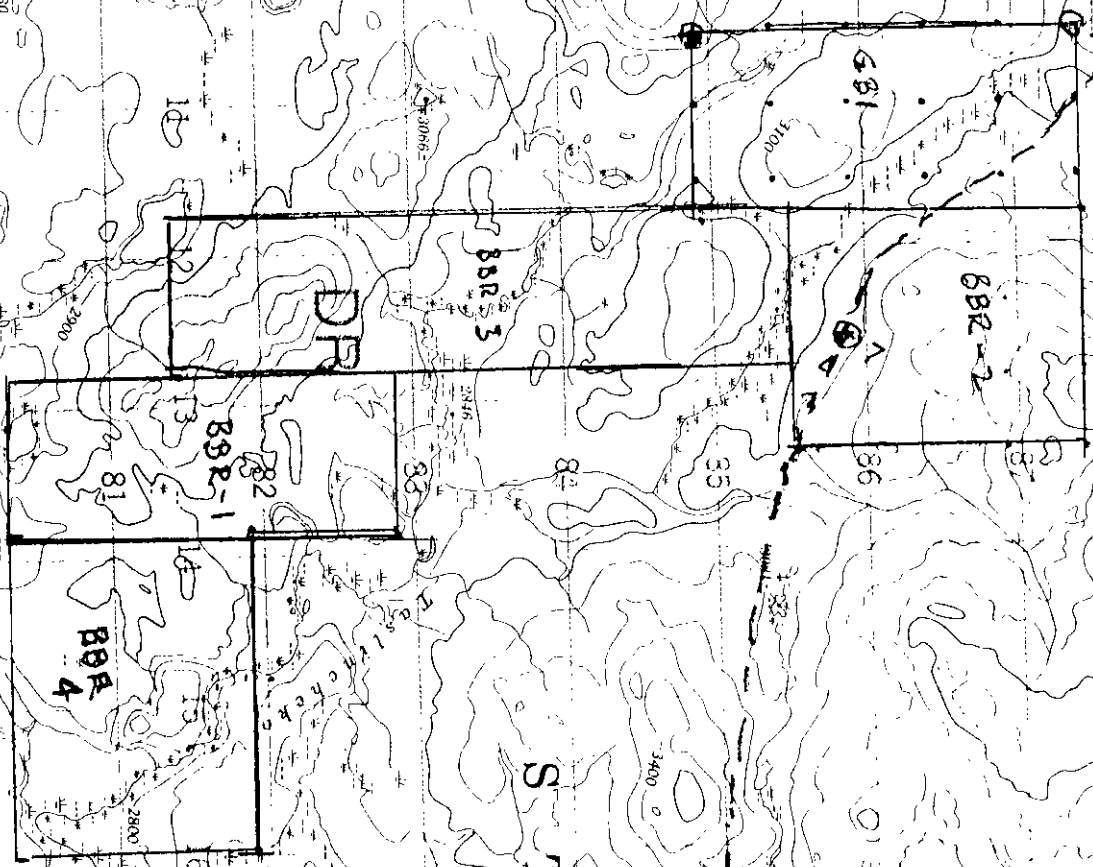
S T U A R

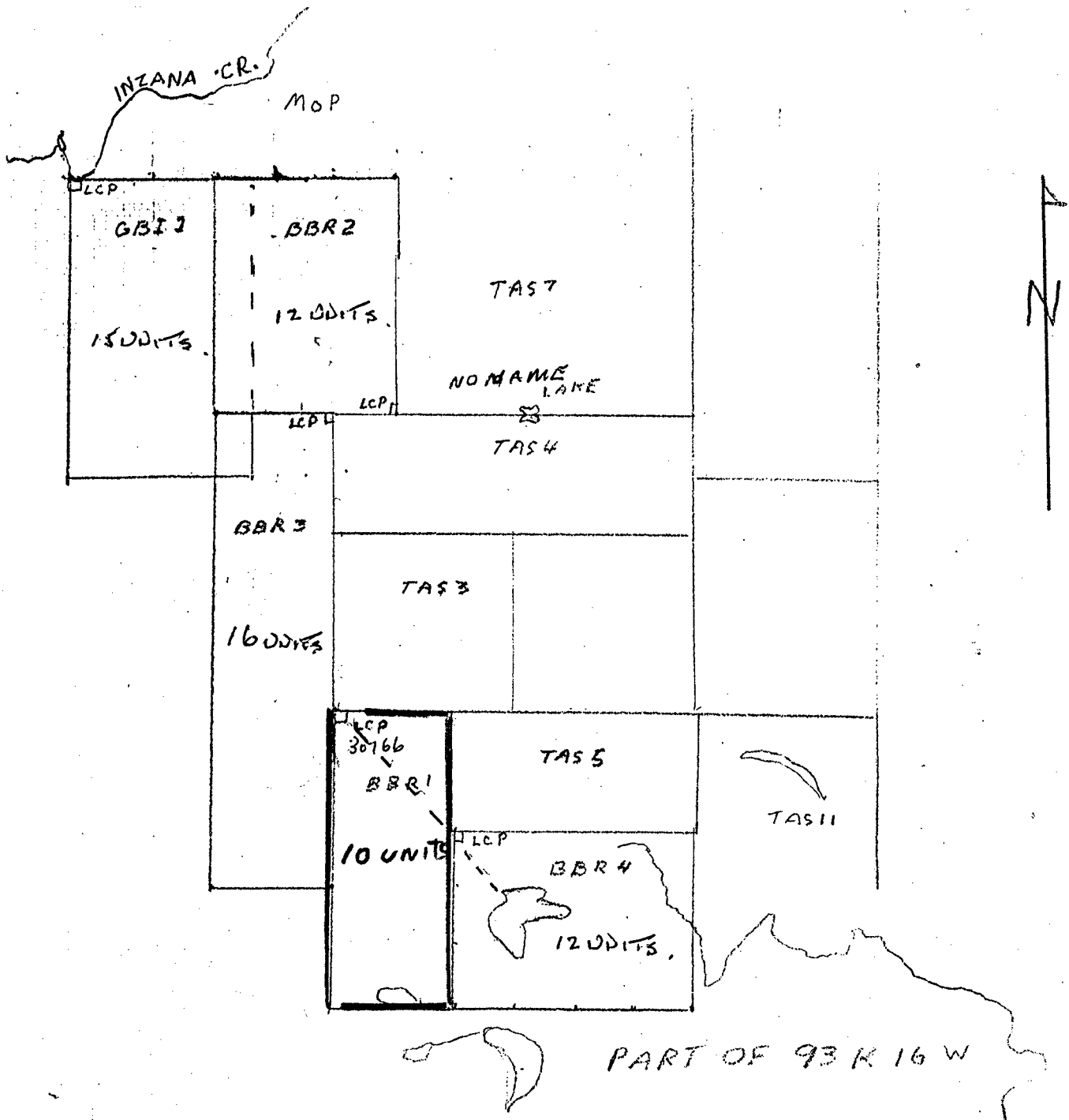
Scale 1:50000

Scale 1:50000

1 inch = 0.8 Miles

P R O V I C E





1-50,000

Location sketch is not acceptable unless all items are marked "YES."

- SKETCH & DESCRIPTION AGREE YES NO
- LEGAL POSTS LABELED YES NO
- SIZE OF CLAIM INDICATED YES NO
- TAG NUMBER SHOWN YES NO
- COPY QUALITY ACCEPTABLE YES NO
- DATE & INITIAL Sept 23/86 [Signature]

If marked "NO," please resolve.

BBR 1
 7999
 93K/16W

INTRODUCTION:

The location of the claimed area lies about 1.5 miles east of east end of INZANA LAKE and the N.W. end of the claimed area GBI contacts INZANA CREEK.

INZANA CREEK is approximately 45 miles north of Ft. St. James in the OMINECA MINING DIVISION, NTS 93K 16.

The claim group is located at approximately 54 55' N Lat. 124° 22' W Long. Access is via the Germansen Road, northwards about 45 miles to a side road westerly approx. 7 miles to INZANA CREEK.

The area contains rolling hills and fairly low in elevation. Many small lakes in the valleys some trending E.-W. with many streams at low elevation. INZANA LAKE lies south westerly about 1.5 miles from the claims worked at an elevation of 2900'.

The area is wooded and a few outcrops occur with float. Soils are sufficient for geochemical sampling as the area is heavily drift covered at an elevation of 3000-3500'.

The rock formations underlying are mainly volcanic rocks with Andesite & Rhyolite (in part Porphyritic) of the Mesozoic age - believed to be Jurassic.

The minerals occurring in the area are mainly Sulphides with Pyrite, Galena, Sphalerite, and Arensopyrite. Placer Gold occurs southwards at STUART LAKE.

Active prospects occur in the area and northwards the OMINECA range has been explored for Sulphides and precious metals for many past years.

HISTORY OF EXPLORATION:

The BBR-2 claims were staked September 17, 1986 and a geochemical survey along the road across BBR-2 and the N.E. corner of GBI was conducted by John Foster later in September, 1986.

Twenty soil samples were taken from the "B" zone directly below the topsoil or humus at 500 foot intervals for a distance of 10,000 feet.

The samples were analyzed for Gold by the Kamloops Research and Assay Laboratory Ltd. in October, 1986 and indicated a Gold anomalous value at Sample 7, (1510 ppb.).

In August, 1987 a grid of 3 lines about 400 feet apart were sampled at 15 meter, or 50 feet, spacing in a north direction.

This geochemical survey was directed by Mr. Lorne Ross and the soil samples taken under contract from August 12 - 16, 1987.

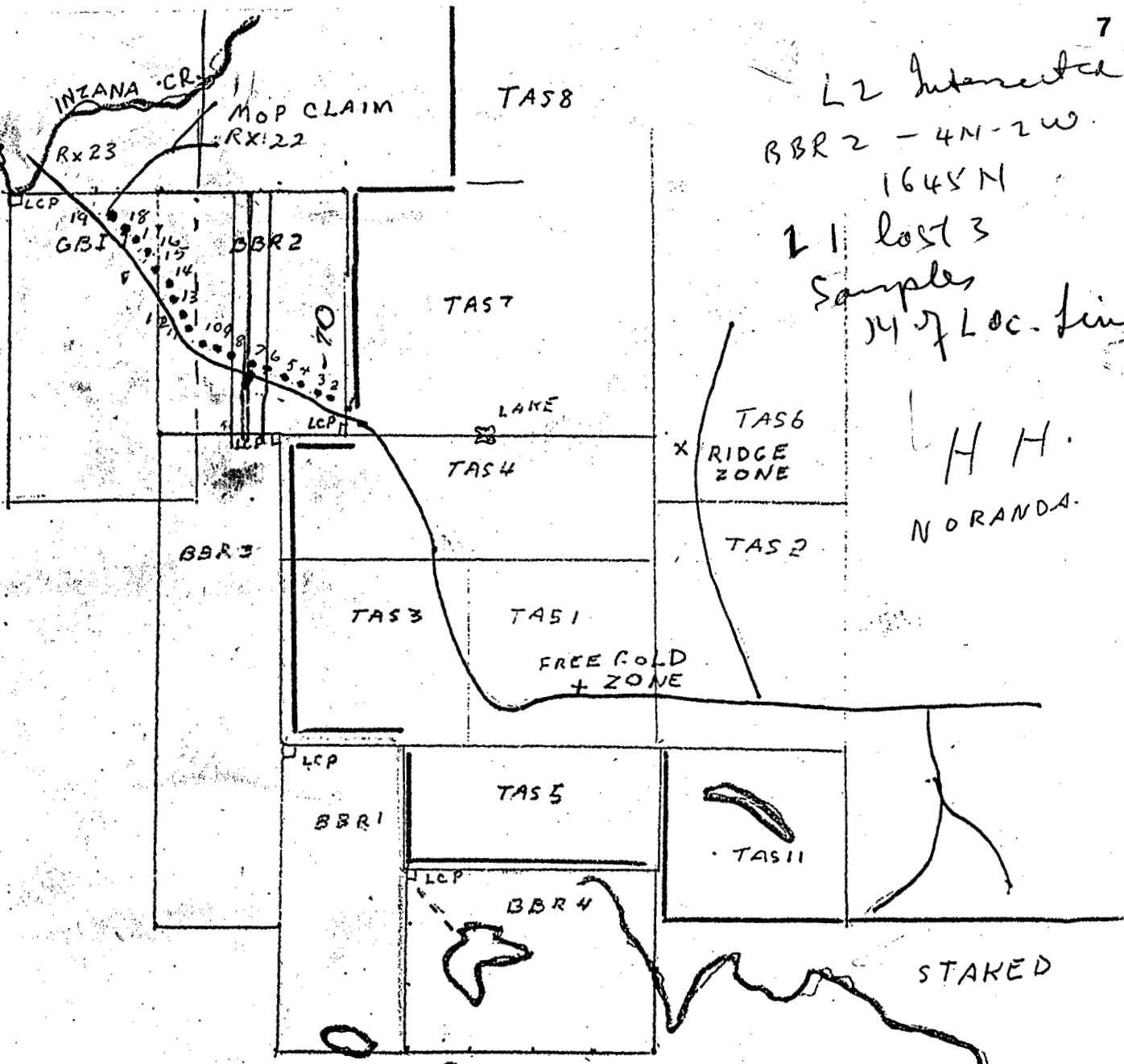
These 3 lines were run across the geochem anomaly northwards. 252 samples were analyzed by the Kamloops Assay Lab. and no anomalous values for Gold were reported. Arsenic also indicated nil within the detection range.

SUMMARY:

Thus, it was concluded that the geochemical sample #7 taken along the road was an isolated Gold anomaly and not detected by further soil sampling in this area.

However, the use of geochemical soil sampling for the detection of Gold remains a valid method and should be used on other ground of the larger claimed area.

L2 Interest
 BBR 2 - 4N-2W.
 1645N
 21 lost 3
 Samples
 14 of Loc. line
 H H.
 NORANDA.



- SAMPLE LOCATION
- STREAM
- NORANDA
- BBR.

PART OF 93 R 16 W



2500 ft. N

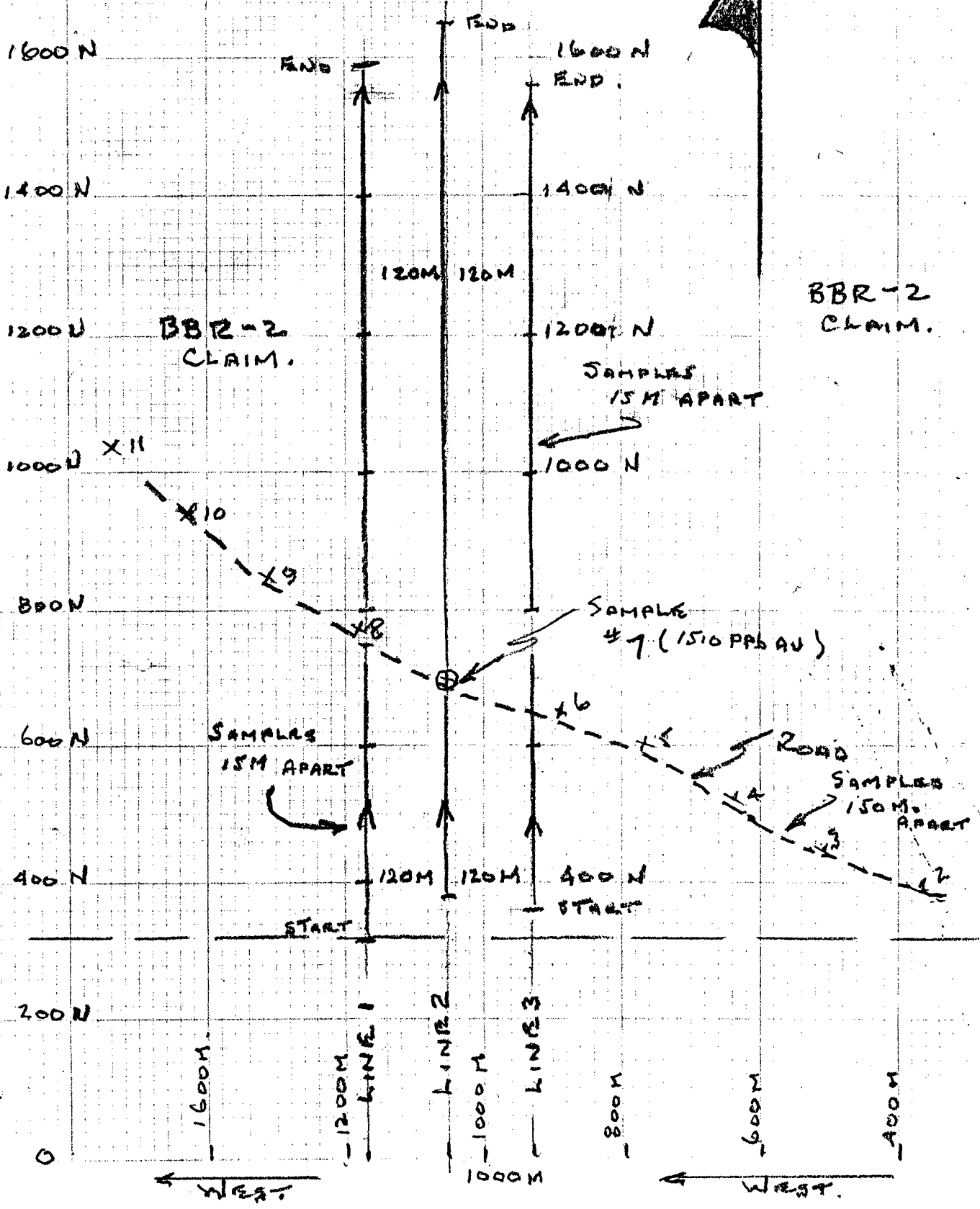
SCALE 1:50000

GEOCHEMICAL SURVEY
INZADA CREEK B.C.
BIG BAR GOLD CORP.
SCALE 1" = 200 METRES.



CHAINED 12 METERS

CLAIM LINE



KAMPLOOPS RESEARCH & ASSAY LABORATORY LTD.

GEOCHEMICAL SOIL ANALYSIS

METHODS USED:

FOR GOLD:

Samples are dried & screened to -80 Mesh.

The fine fraction is fired and with AA the Gold content determined to a tolerance of 5 parts per billion Au using standard methods.

ARSENIC:

The samples are prepared similar to Gold, dried and screened to -80 Mesh.

Standard Reagents and AA determine the Arsenic content to within 10 parts per million As.

KAMLOOPS RESEARCH
&
ASSAY LABORATORY
LTD.

B. C. CERTIFIED ASSAYERS

912 LAVAL CRESCENT
PHONE 372-2784 - TELEX 048-8320

GEOCHEMICAL LAB REPORT

BIG BAR RESOURCES
BOX 157,
ASHCROFT, B. C.
VOK 1A0.

DATE OCT. 14, 1986
FILE NO. G 1528

PAGE 1 / 1

KRAL NO.	IDENTIFICATION	AU
1	INZANA	3.0
2	1	3.0
3	2	3.0
4	3	55.0
5	3B	3.0
6	4	3.0
7	5B	3.0
8	6B	3.0
9	7	1510.0
10	8	3.0
11	9	3.0
12	10B	3.0
13	11B	3.0
14	12	3.0
15	13	20.0
16	14	5.0
17	15	3.0
18	16	3.0
19	18	3.0
20	19	5.0
21	21	3.0

3 INDICATES <5 PPB

NB SAMPLED ALONG ROAD BY JOHN FOSTER
SEPT/86.

KAMLOOPS RESEARCH
&
ASSAY LABORATORY
LTD.

B. C. CERTIFIED ASSAYERS

912 LAVAL CRESCENT, KAMLOOPS, B. C. V2C 5P5
PHONE 372-2784 - TELEX 048-8320 - FAX 372 1112

GEOCHEMICAL LAB REPORT

BIG BAR GOLD CORPORATION
BOX 157
ASHCROFT, B. C.
VOK IAO

DATE AUGUST 27, 1987

FILE NO. G1717

PAGE 1 / 7

KRAL NO.	IDENTIFICATION	AU	AS
1	320N L1	3.0	10.0
2	335N	3.0	10.0
3	350N	3.0	10.0
4	365N	3.0	10.0
5	380N	3.0	10.0
6	395N	3.0	10.0
7	410N	3.0	10.0
8	440N	3.0	10.0
9	455N	3.0	10.0
10	470N	3.0	10.0
11	480N	3.0	10.0
12	495N	3.0	10.0
13	510N	3.0	10.0
14	515N	3.0	10.0
15	540N	3.0	10.0
16	555N	3.0	10.0
17	570N	3.0	10.0
18	585N	3.0	10.0
19	600N	3.0	10.0
20	615N	3.0	10.0
21	630N	3.0	10.0
22	645N	3.0	10.0
23	660N	3.0	10.0
24	675N	3.0	10.0
25	690N	3.0	10.0
26	705N	3.0	10.0
27	720N	3.0	10.0
28	735N	3.0	10.0
29	750N	3.0	10.0
30	765N L1	3.0	10.0

KAMLOOPS RESEARCH & ASSAY LABORATORY LTD.
GEOCHEMICAL LAB REPORT

FILE NO. 61717

PAGE 2 / 7

KRAL NO.	IDENTIFICATION	AU	AS
31	780N L1	3.0	10.0
32	795N	3.0	10.0
33	810N	3.0	10.0
34	825N	3.0	10.0
35	840N	3.0	10.0
36	855N	3.0	10.0
37	870N	3.0	10.0
38	885N	3.0	10.0
39	900N	3.0	10.0
40	915N	3.0	10.0
41	930N	3.0	10.0
42	945N	3.0	10.0
43	960N	3.0	10.0
44	975N	3.0	10.0
45	990N	3.0	10.0
46	1005N	3.0	10.0
47	1020N	3.0	10.0
48	1035N	3.0	10.0
49	1050N	3.0	10.0
50	1065N	3.0	10.0
51	1080N	3.0	10.0
52	1110N	3.0	10.0
53	1125N	3.0	10.0
54	1140N	3.0	10.0
55	1165N	3.0	10.0
56	1180N	3.0	10.0
57	1195(A)N	3.0	10.0
58	1195(B)N	3.0	10.0
59	1225N	3.0	10.0
60	1240N	3.0	10.0
61	1270N	3.0	10.0
62	1295N	3.0	10.0
63	1310N	3.0	10.0
64	1325N	3.0	10.0
65	1340N	3.0	10.0
66	1355N	3.0	10.0
67	1365N	3.0	10.0
68	1380N	3.0	10.0
69	1395N	3.0	10.0
70	1410(A)N L1	3.0	10.0

KAMLOOPS RESEARCH & ASSAY LABORATORY LTD.
GEOCHEMICAL LAB REPORT

FILE NO. G1717

PAGE 3 / 7

KRAL NO.	IDENTIFICATION	AU	AS
71	1410(B)N L1	3.0	10.0
72	1425N	3.0	10.0
73	1440N	3.0	10.0
74	1465N	3.0	10.0
75	1470N	3.0	10.0
76	1485N	3.0	10.0
77	1500N	3.0	10.0
78	1515N	3.0	10.0
79	1530N	3.0	10.0
80	1545N	3.0	10.0
81	1560N	3.0	10.0
82	1575N	3.0	10.0
83	1590N L1	3.0	10.0
84	380N L2	3.0	10.0
85	395N	3.0	10.0
86	410N	3.0	10.0
87	425N	3.0	10.0
88	440N	3.0	10.0
89	455N	3.0	10.0
90	470N	3.0	10.0
91	485N	3.0	10.0
92	500N	3.0	10.0
93	515N	3.0	10.0
94	530N	3.0	10.0
95	545N	3.0	10.0
96	560N	3.0	10.0
97	575N	3.0	10.0
98	590N	3.0	10.0
99	605N	3.0	10.0
100	620N	3.0	10.0
101	635N	3.0	10.0
102	650N	3.0	10.0
103	675N	3.0	10.0
104	690N	3.0	10.0
105	705N	3.0	10.0
106	720N	3.0	10.0
107	735N	3.0	10.0
108	750N - Road /	3.0	10.0
109	765N	3.0	10.0
110	780N L2	3.0	10.0

KAMLOOPS RESEARCH & ASSAY LABORATORY LTD.
GEOCHEMICAL LAB REPORT

FILE NO. G1717

PAGE 4 / 7

KRAL NO.	IDENTIFICATION	AU	AS
111	795N L2	3.0	10.0
112	810N	3.0	10.0
113	825N	3.0	10.0
114	840N	3.0	10.0
115	870N	3.0	10.0
116	885N	3.0	10.0
117	900N	3.0	10.0
118	913N	3.0	10.0
119	930N	3.0	10.0
120	945N	3.0	10.0
121	960N	3.0	10.0
122	975N	3.0	10.0
123	990N	3.0	10.0
124	1005N	3.0	10.0
125	1025N	3.0	10.0
126	1035N	3.0	10.0
127	1050N	3.0	10.0
128	1065N	3.0	10.0
129	1080N	3.0	10.0
130	1095N	3.0	10.0
131	1110N	3.0	10.0
132	1125N	3.0	10.0
133	1140N	3.0	10.0
134	1155N	3.0	10.0
135	1170N	3.0	10.0
136	1185N	3.0	10.0
137	1200N	3.0	10.0
138	1215N	3.0	10.0
139	1230N	3.0	10.0
140	1245N	3.0	10.0
141	1260N	3.0	10.0
142	1285N	3.0	10.0
143	1300N	3.0	10.0
144	1315N	3.0	10.0
145	1335N	3.0	10.0
146	1345N	3.0	10.0
147	1360N	3.0	10.0
148	1375N	3.0	10.0
149	1390N	3.0	10.0
150	1405N L2	3.0	10.0

KAMLOOPS RESEARCH & ASSAY LABORATORY LTD.
GEOCHEMICAL LAB REPORT

FILE NO. G1717

PAGE 5 / 7

KRAL NO.	IDENTIFICATION	AU	AS
151	1420N L2	3.0	10.0
152	1435N	3.0	10.0
153	1450N	3.0	10.0
154	1465N	3.0	10.0
155	1480N	3.0	10.0
156	1495N	3.0	10.0
157	1510N	3.0	10.0
158	1525N	3.0	10.0
159	1540N	3.0	10.0
160	1555N	3.0	10.0
161	1570N	3.0	10.0
162	1585N	3.0	10.0
163	1600N	3.0	10.0
164	1615N	3.0	10.0
165	1630N	3.0	10.0
166	1645N L2	3.0	10.0
167	360N L3	3.0	10.0
168	375N	3.0	10.0
169	390N	3.0	10.0
170	405N	3.0	10.0
171	420N	3.0	10.0
172	435N	3.0	10.0
173	450N	3.0	10.0
174	465N	3.0	10.0
175	480N	3.0	10.0
176	495N	3.0	10.0
177	510N	3.0	10.0
178	525N	3.0	10.0
179	540N	3.0	10.0
180	555N	3.0	10.0
181	570N	3.0	10.0
182	600N	3.0	10.0
183	615N	3.0	10.0
184	630N	3.0	10.0
185	645N	3.0	10.0
186	660N	3.0	10.0
187	675N	3.0	10.0
188	690N	3.0	10.0
189	705N	3.0	10.0
190	720N L3	3.0	10.0

KAMLOOPS RESEARCH & ASSAY LABORATORY LTD.
GEOCHEMICAL LAB REPORT

FILE NO. G1717

PAGE 6 / 7

KRAL NO.	IDENTIFICATION	AU	AS
191	735N L3	3.0	10.0
192	750N	3.0	10.0
193	765N	3.0	10.0
194	780N	3.0	10.0
195	795N	3.0	10.0
196	810N	3.0	10.0
197	825N	3.0	10.0
198	840N	3.0	10.0
199	855N	3.0	10.0
200	870N	3.0	10.0
201	885N	3.0	10.0
202	900N	3.0	10.0
203	915N	3.0	10.0
204	930N	3.0	10.0
205	945N	3.0	10.0
206	960N	3.0	10.0
207	1020N	3.0	10.0
208	1035N	3.0	10.0
209	1050N	3.0	10.0
210	1065N	3.0	10.0
211	1080N	3.0	10.0
212	1095N	3.0	10.0
213	1110N	3.0	10.0
214	1155N	3.0	10.0
215	1200N	3.0	10.0
216	1215N	3.0	10.0
217	1230N	3.0	10.0
218	1245N	3.0	10.0
219	1290N	3.0	10.0
220	1320N	3.0	10.0
221	1335(A)N	3.0	10.0
222	1335(B)N	3.0	10.0
223	1350N	3.0	10.0
224	1365N	3.0	10.0
225	1380N	3.0	10.0
226	1395N	3.0	10.0
227	1410(A)N	3.0	10.0
228	1410(B)N	3.0	10.0
229	1425N	3.0	10.0
230	1440N L3	3.0	10.0

KAMLOOPS RESEARCH & ASSAY LABORATORY LTD.
GEOCHEMICAL LAB REPORT

FILE NO. G1717

PAGE 7 / 7

KRAL NO.	IDENTIFICATION	AU	AS
231	1455N L3	3.0	10.0
232	1470N	3.0	10.0
233	1485N	3.0	10.0
234	1500N	3.0	10.0
235	1515N	3.0	10.0
236	1530N	3.0	10.0
237	1545N	3.0	10.0
238	1560N L3	3.0	10.0
239	SS#1	3.0	10.0
240	RR#1	3.0	10.0
241	RR#2	3.0	10.0
242	RR#3	3.0	10.0
243	RR#4	3.0	10.0
244	RR#5	3.0	10.0
245	L2-R-675	3.0	10.0
246	L3-810N	3.0	10.0
247	L3-1170N	3.0	10.0
248	L3-1560N	3.0	10.0
249	L2-N855	3.0	10.0
250	L2-960N	3.0	10.0
251	L2-1200N	3.0	10.0
252	L2-1555N	3.0	10.0

IN AU COLUMN 3 INDICATES <5PPB

IN AS COLUMN 10 INDICATES <20PPM

KAMLOOPS RESEARCH
&
ASSAY LABORATORY
LTD.

B.C. CERTIFIED ASSAYERS

912 LAVAL CRESCENT, KAMLOOPS, B.C. V2C 5P5
PHONE 372-2784 - TELEX 048-8320 - FAX 372 1112

GEOCHEMICAL LAB REPORT

BIG BAR RESOURCES
DR. L.E. ROSS
BOX 157
ASHCROFT, B.C.

DATE OCTOBER 7, 1987

FILE NO. G 1786

PAGE 1 / 1

KRAL NO.	IDENTIFICATION	AU
1	SS#2	3.0
2	SS#3	3.0
3	SS#4	3.0
4	SS#5	3.0
5	SS#6	3.0
6	SS#7	3.0
7	SS#8	120.0
8	BER#1	80.0

3 INDICATES <5 PPB

JB SILT SAMPLES TAKEN FROM NW CLAIM GBI-
 4 SOUTH OF ROAD
 3 CLOSE TO INZADA CREEK
 ON TRIAL BASIS AUGUST 12-16/87
 NO INTERPRETATION DUE TO SPARSE DATA.
 JSC.

**KAMLOOPS
RESEARCH & ASSAY
LABORATORY LTD.**

B.C. CERTIFIED ASSAYERS

912 - 1 LAVAL CRESCENT — KAMLOOPS, B.C.
V2C 5P5
PHONE: (604) 372-2784 — TELEX: 048-8320

Big Bar Gold Corporation
Box 157
Ashcroft, B.C.
VOK 1A0

INVOICE: 87 - 0483
DATE: August 27, 1987
FILE No. G 1717

239 Sample preparations	@ \$.70	\$ 167.30
13 Rock preparations	@ 2.50	32.50
252 Au	@ 6.00	1,512.00
252 As	@ 1.90	478.80
		<u>478.80</u>
		<u>\$2,190.60</u>

COST STATEMENT:

PERIOD: AUGUST 31, 1986 - AUGUST 31, 1987

The geochemical sampling commenced in September, 1986.

John Foster of Kamloops, B.C. sampled along road;

BBR-2 & GBI, 20 Soil Samples @ \$6.66	\$ 133.20
Cost of Analysis - 20 S	\$ 197.00
	<u>\$ 330.20</u>

Grid Lines Sampled Aug. 12-16/87 Soil Samples Contracted - Edith Inc. Expenses 252 Samples	\$ 2,000.00
--	-------------

Kamloops Research & Assay Lab. Ltd. Cost of Analysis, 252 Samples	\$ 2,190.60
--	-------------

EXPENSES IN FIELD:

Lorne Ross, Supervisor for Big Bar Gold Corp.; Left Ashcroft, Aug. 11/87; Worked Aug. 12-16/87; Returned Aug. 17/87; Vehicle Cost-Gas & Oil- 1488 km @ \$.10	\$ 148.80
Motel	\$ 73.44
Meals	\$ 128.70

Fees For Supervision: Travelling, 2 days @ \$100.	\$ 200.00
Working, 4 days @ \$200.	<u>\$ 800.00</u>

Lorne Ross; TOTAL COSTS	<u>\$ 1,350.94</u>
-------------------------	--------------------

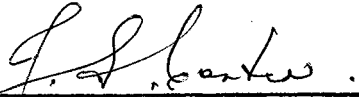
Misc. Costs on Survey: Managing, Expediting, & Assessment Report	<u>\$ 824.26</u>
---	------------------

TOTAL COSTS FOR YEAR	<u>\$ 6,696.00</u>
----------------------	--------------------

STATEMENT OF QUALIFICATIONS

I, John S. Carter, P. Geol. of Calgary, Alberta do hereby certify:

1. I am a Geologist with residence at:
4019 Dalarna Bay N.W.
Calgary, Alberta
T3A 1G8
2. I am a graduate of McGill University, Montreal, P.Q.
BSc. 49 (Geol.).
3. I am a registered Professional Geologist - Alberta and
a member of the C.I.M.M.
4. I have worked as an exploration geologist 30 years mainly
in Western Canada and several Foreign Countries on Petroleum,
Coal, Industrial Minerals and Sulphides.
5. I have been engaged in Mineral Exploration in the Province
of British Columbia for approximately 20 years.
6. I have been engaged in both Airborne & Ground Geophysical
surveys and am familiar with both conducting and interpreting
Geophysical & Geochemical Survey Data.



J. S. Carter
P. Geol. (Alta.)

