

| | |
|-----------------------|-----|
| LOG NO: 1203 | RD. |
| ACTION: | |
| FILE NO: 87-835-16574 | |

GEOCHEMICAL SAMPLING PROGRAM

ON THE

MICHELE 1 CLAIM

FILMED

Omineca Mining Division

NTS 94C/5E

Lat: 56° 29' ^{06"}N Long: 125° 38' ^{12"}W

By:

Ursula Mowat

Owner/Operator:

For:

Esso Minerals Canada
A Division of Esso Resources Canada Limited
1600 - 409 Granville Street
Vancouver, B.C. V6C 1T2

**GEOLOGICAL BRANCH
ASSESSMENT REPORT**

August 31, 1987

16,574

| | |
|--------------------------|----|
| SUB-RECORDER RECEIVED | |
| NOV 23 1987 | |
| M.R. # | \$ |
| VANCOUVER, B.C. | |

TABLE OF CONTENTS

| | <u>PAGE NO.</u> |
|-----------------------------------|-----------------|
| 1.0 INTRODUCTION | 1 |
| 2.0 LOCATION AND ACCESS | 2 |
| 3.0 TOPOGRAPHY | 2 |
| 4.0 CLAIM DATA | 2 |
| 5.0 HISTORY | 3 |
| 6.0 REGIONAL GEOLOGY | 3 |
| 7.0 PROPERTY GEOLOGY | 4 |
| 8.0 ALTERATION AND MINERALIZATION | 6 |
| 9.0 SAMPLE DESCRIPTIONS | 7 |
| 10.0 WORK PERFORMED | 11 |
| 11.0 RESULTS | 11 |
| 12.0 RECOMMENDATIONS | 12 |
| 13.0 REFERENCES | 12 |

APPENDICES

- I STATEMENT OF COSTS
- II STATEMENT OF QUALIFICATIONS
- III GEOCHEMICAL RESULTS

LIST OF FIGURES

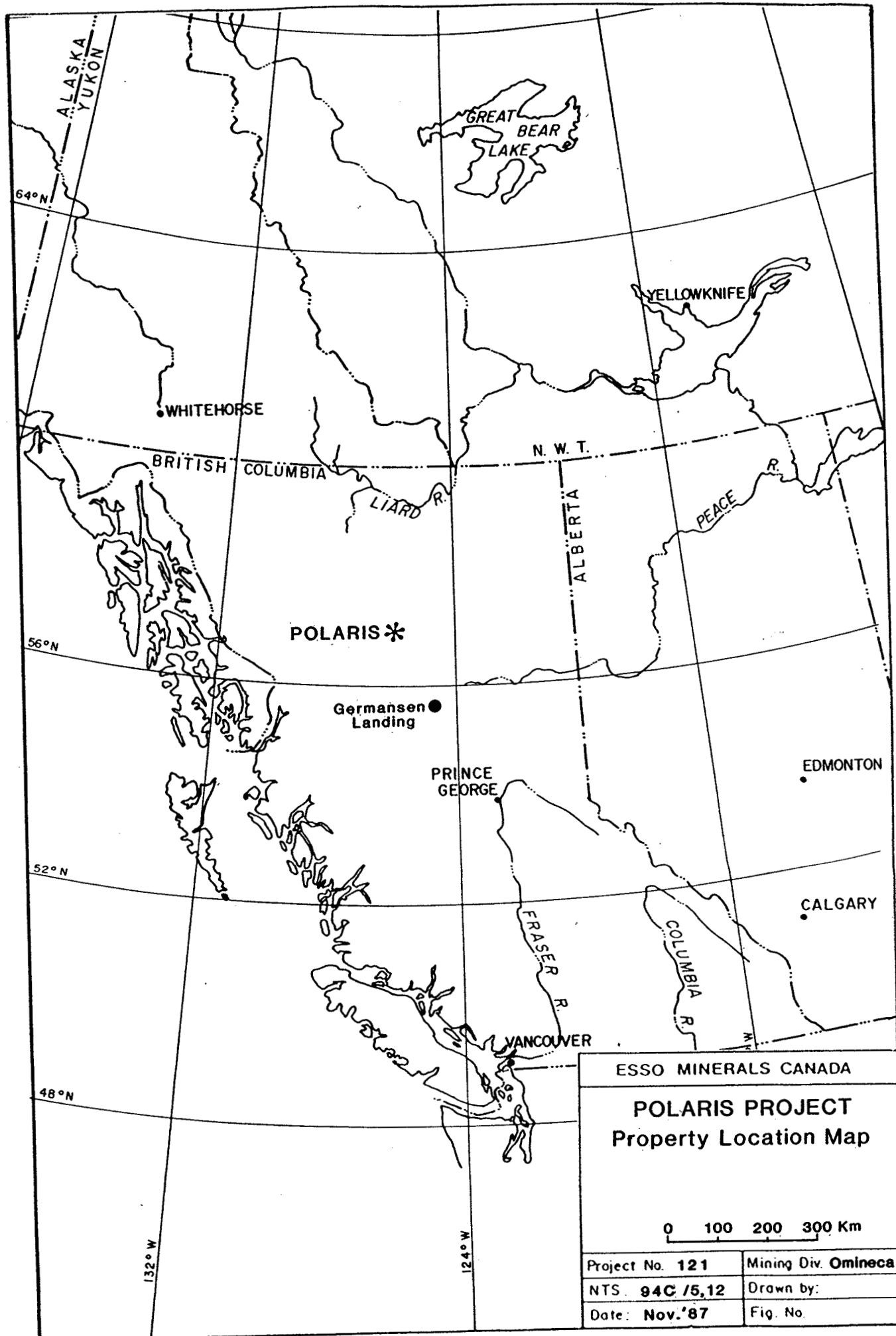
- Figure 1 Sample Location Map ~~In Pocket~~
- Figure 2 Geology ~~In Pocket~~

1.0 INTRODUCTION

The Michele 1 mineral claim, consisting of 20 units, is located within the Omineca Mining Division. The claim is geographically located 8 km due northeast of Aiken Lake. The closest semi-populated area is Germansen Landing which is located some 100 km to the south-southeast.

On August 16, 1987 a reconnaissance geochemical program was carried out on the Michele 1 claim. Sixteen rock samples, 18 silts and 1 heavy mineral sample were collected. All samples were analyzed for 30 elements by ICP as well as for Au, Pt, Pd and Rh by fire assay and atomic absorption.

Results from the sampling indicate that better Pt/Pd values were located in areas of sulphide-bearing harzburgite. Also noted was the presence of weak gold values associated with the syenite intrusives.



ESSO MINERALS CANADA

POLARIS PROJECT
Property Location Map

0 100 200 300 Km

| | |
|-----------------|----------------------------|
| Project No. 121 | Mining Div. Omineca |
| NTS. 94C /5,12 | Drawn by: |
| Date: Nov.'87 | Fig. No. |

2.0 LOCATION AND ACCESS

The Michele 1 mineral claim is located at $56^{\circ} 29'N / 125^{\circ} 37'W$ on map sheet 94C/5E. The claim lies approximately 8 km due northeast of Aiken Lake. The closest semi-populated area is Germansen Landing located some 100 km to the south-southeast.

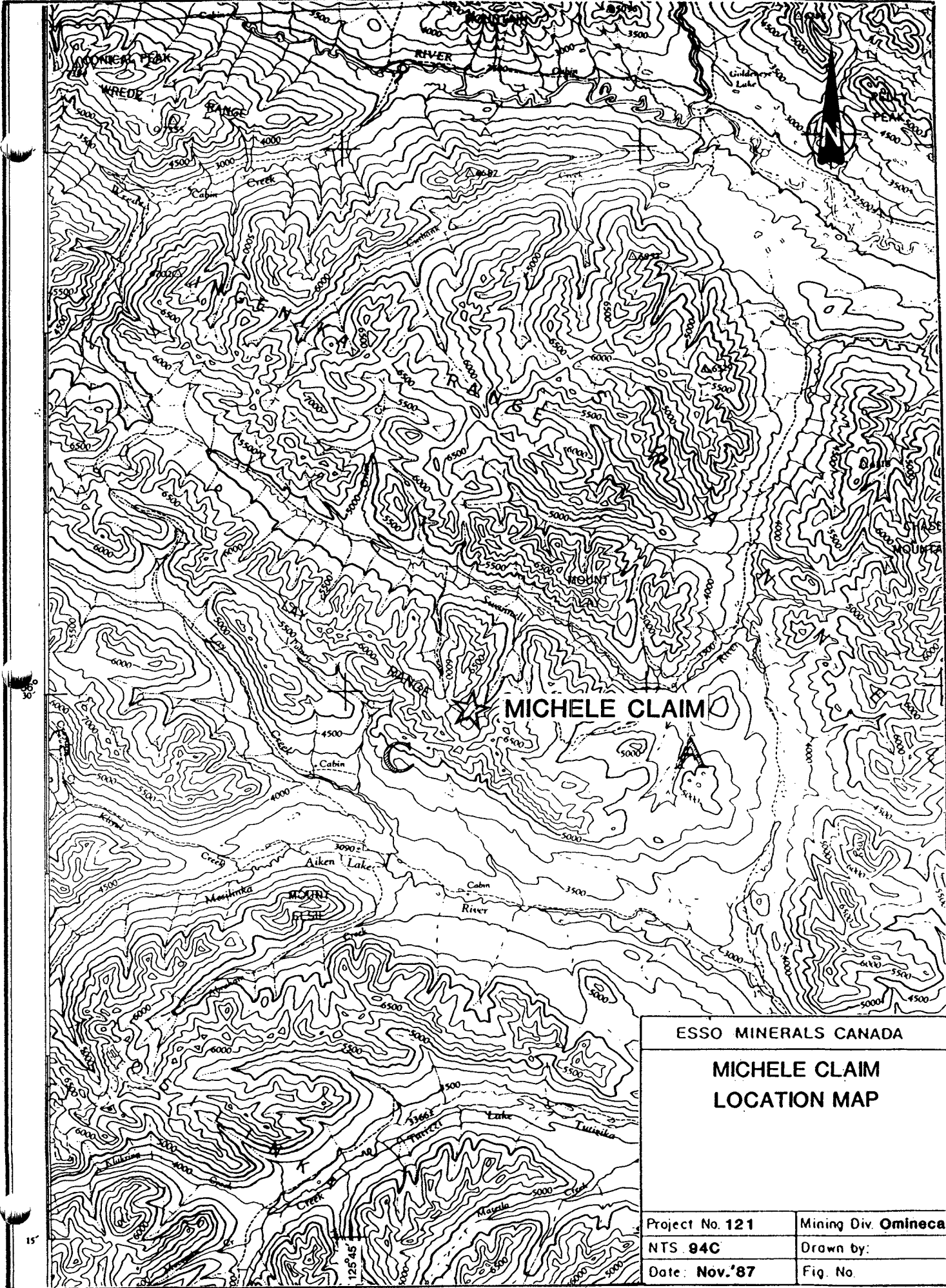
Access to the Michele 1 claim is by helicopter although the Omineca Forestry Access Road passes within 8 km of the claim. Access to the claim was attained by a Northern Mountain 206-B stationed at Moose Vale.

3.0 TOPOGRAPHY

Elevation on the Michele 1 claim ranges from 1550 metres on the north end of the claim up to 2100 metres near the cirque walls at the southern boundary. The claim straddles a broad glacial valley with a gentle slope. The cirque walls bordering most of the claim are very steep and rise 100 metres over a horizontal distance of 200 metres.

4.0 CLAIM DATA

| | |
|------------------|--------------------|
| Claim Name: | MICHELE 1 |
| Record Number: | 7929 |
| Number of Units: | 20 |
| Date Staked: | September 14, 1986 |
| Date Recorded: | September 25, 1986 |
| Staker: | J. Mencl |



MICHELE CLAIM

ESSO MINERALS CANADA

**MICHELE CLAIM
LOCATION MAP**

| | |
|-----------------|---------------------|
| Project No. 121 | Mining Div. Omineca |
| NTS 94C | Drawn by: |
| Date: Nov. '87 | Fig. No. |

5.0 HISTORY

There is no previous recorded documentation that the area underlain by the Michele 1 claim was ever staked, although there were numerous claims in the vicinity which were staked to cover ground favourable for stratiform lead-zinc occurrences within the Lower Cambrian (?) Ingenika Group.

6.0 REGIONAL GEOLOGY

The Michele 1 claim is located within a northwesterly trending, 6 km wide, belt of Mississippian to Permian (mainly or entirely), tuff, andesitic and basaltic flows, agglomerate, greywacke; sandstone, grit, conglomerate; limestone, chert, shale and argillite. This assemblage may be as much as 5,500 metres thick.

Work performed in 1972 by J.W.H. Monger showed that the Lay Range, originally considered to be of Upper Paleozoic age, appears to be composed of at least five northwesterly trending fault slices of differing lithology and probably of differing ages. From north to south the lithologic slices consist of:

- volcanic sandstone and agglomerate of probably Early Pennsylvanian age;
- a complex zone forming the crest of the Lay Range with Middle Pennsylvanian carbonate pods, red radiolarian chert and argillite which is probably conformably overlain by conglomerate and breccia containing volcanic and metamorphic fragments;

- hematitic conglomerate with abundant granitic boulders, probably of Cretaceous age;
- green to maroon, locally porphyritic volcanic rocks;
- pyritiferous argillite and dark graded volcanic sandstone with local carbonate lenses, probably of Upper Triassic age.

The northwesterly trending belt of volcanoclastics and sedimentary rocks has been intruded by both ultramafics and granitic bodies. The ultramafics are termed Trembleur Intrusions and have been dated at 164 - 152 m.y. (Middle Jurassic) based on K-Ar dating of biotite and hornblende from the ultramafic complex. The ultramafic intrusive consists of mainly dunite and olivine-rich peridotite (wehrlite) with well developed minor units of olivine pyroxenite and magnetite-rich hornblendite.

Granitic bodies intruding the northwesterly trending belt are believed to be of Upper Jurassic or Late Cretaceous age and consist of quartz diorite, diorite, minor syenodiorite, meladiorite, appinite, hornblendite and uralite amphibolite.

The area underlain by the Michele 1 claim is underlain by dominantly ultramafic rocks consisting of dunite, peridotite, olivine pyroxenite with some minor syenite.

7.0 PROPERTY GEOLOGY

Approximately 300 hectares were covered in a sampling and prospecting program. The following lithologies were noted:

1. Olivine pyroxenite (harzburgite), yellow weathering, black on fresh surface with coarse-grained pyroxene crystals that reach up to 5 mm. The black colouration is partially due to magnetite and/or chromite which can form up to 50% of the hand specimen. Sulphides consist dominantly of pyrite with lesser amounts of chalcopyrite. The sulphides form as disseminations mainly and occasionally as coarse clots up to 1 cm long and 0.5 cm wide. Occasionally, the sulphide content reaches 10% of the specimen but usually ranges from 0-5%. Distinct layering was noted in this unit which is also cut by orthopyroxenite (?) veinlets on occasion.

In the vicinity of the syenite outcrops, the olivine pyroxenite (harzburgite) is cut by quartz and quartz-feldspar veinlets containing epidote and K-spar. As well, coarse flakes of brown biotite have also developed in the olivine pyroxenite.

2. Black, dense, fine-grained peridotite. This unit is very variable ranging from massive to layered, from black dense to being mottled by zones of pale green dunite and/or epidote. Sulphide content, as in the harzburgite, is also variable ranging from 0-10%. The dominant sulphide is pyrite with minor chalcopyrite.

In the vicinity of the syenite outcrops, quartz veining with some carbonate becomes more intense.

3. Porphyritic hornblendite, black, very coarse-grained with hornblende crystals reaching 5 cm in length. In one specimen, a clot of chalcopyrite was noted that measured 2.5 cm x 0.5 cm.
4. Black, coarse-grained pyroxenite with pyroxene crystals averaging 1.5 cm across. The rock is very magnetic and also averages 1% pyrite. Occasionally, the pyroxenite is cut by feldspar veinlets that contain phenocrysts of pyroxene which reach 5 mm long.
5. Syenite, altered by silicification (?) to a massive, textureless, milky white to pale green colour and grading to very fresh-looking. Specimen M-3 is exceedingly fresh-looking and appears to be composed of 99% semi-translucent feldspar and 1% pyrite. The other syenite occurrences on the property are usually the milky white to pale green variety. Minor amounts of quartz veinlets were seen in the milky white-pale green variety.

8.0 ALTERATION AND MINERALIZATION

The dominant sulphide mineral on the property is pyrite with minor amounts of chalcopyrite. Both sulphides are found in the harzburgite and the peridotite mainly. Usually the sulphides occur as disseminations but, in one section of the property, concentrated zones of sulphides (10%) form "ball-like" masses within the peridotite and the harzburgite host rocks. Chalcopyrite has only been seen to form clots within the peridotite and harzburgite.

Chromite and/or magnetite was noted on several occasions and were seen to form concentrated, discontinuous layers of up to 50% of the hand specimen. Black chromite smears were also seen on fracture surfaces.

Two types of alteration are apparent on the property. The most obvious is a chain of gossanous outcrops trending 030° located in the southwest corner of the property. The gossanous zone consists of rusty weathering, carbonate with mariposite and some white veinlets of quartz and magnesite.

The second type of alteration which is less obvious is directly related to the syenite. In close proximity to the syenite outcrops, quartz, quartz-carbonate, quartz-feldspar veining increases, epidote alteration becomes abundant, tremolite has formed and there is a pervasive zone of brown biotite flakes.

9.0 SAMPLE DESCRIPTIONS

Sample

| <u>Number</u> | <u>Description</u> | <u>Au</u> | <u>Pt</u> | <u>Pd</u> |
|---------------|----------------------------------------------------------------------------------------------------------------|-----------|-----------|-----------|
| M-1 | Carbonated ultramafic with traces of a green mineral possibly mariposite or epidote; cut by magnesite veinlets | 2 | 4 | 2 |
| M-2 | Chromite-rich olivine pyroxenite - up to 50% chromite in specimen | 1 | 5 | 4 |

| <u>Sample</u> <u>Number</u> | <u>Description</u> | <u>Au</u> | <u>Pt</u> | <u>Pd</u> |
|--------------------------------|------------------------------------------------------------------------------------------------------------------------------------------|-----------|-----------|-----------|
| M-3 | Pale rusty quartz-feldspar intrusive with translucent feldspar crystals, very crystalline appearance; 1% pyrite | 32 | 2 | 2 |
| M-4 | Silt | 6 | 160 | 19 |
| M-5 | Black peridotite with irregular zones of medium yellow green dunite; cut by calcite/pink K-spar (?)/epidote veinlets with some sulphides | 2 | 2 | 2 |
| M-6 | Rusty weathering peridotite with zones of 10% pyrite, trace chalcopryrite; cut by quartz (?) carbonate (?) veinlets | 6 | 5 | 11 |
| M-7 | Quartz vein in black peridotite and a rusty carbonate zone | 2 | 2 | 2 |
| M-8 | Hornblendite (porphyritic) with hornblende crystals 5 cm long; specimen has a clot of chalcopryrite 2.5 cm x 0.5 cm | 9 | 25 | 55 |
| M-9 | Black, coarse-grained pyroxenite, very magnetic; cut by feldspar veinlets with phenocrysts of pyroxene 5 mm long; 1% pyrite | 2 | 19 | 25 |

| <u>Sample</u> <u>Number</u> | <u>Description</u> | <u>Au</u> | <u>Pt</u> | <u>Pd</u> |
|--------------------------------|-----------------------------------------------------------------------------------------------------------------------------------------------------------------------------|-----------|-----------|-----------|
| M-10 | Rusty float from uphill; pyroxenite with 10% pyrite and trace chalcopyrite; some malachite staining | 3 | 21 | 38 |
| M-11 | Silt; taken below syenite; very micaceous | 1 | 45 | 7 |
| M-12 | Silt | 2 | 22 | 20 |
| M-13 | Silt | 1 | 41 | 16 |
| M-14 | Medium grained harzburgite with 5% combined pyrite and chalcopyrite; some malachite staining | 73 | 75 | 111 |
| M-15 | Silt; taken below an outcrop of very coarse-grained pyroxenite which grades from pyroxenite with a feldspar matrix to medium grained, dense black pyroxenite | 2 | 20 | 18 |
| M-16 | Globular harzburgite; texture produced by shearing | 1 | 18 | 2 |
| M-17 | Chromite-rich harzburgite | 2 | 13 | 3 |
| M-18 | Silt; very micaceous | 1 | 23 | 19 |

| <u>Sample</u> <u>Number</u> | <u>Description</u> | <u>Au</u> | <u>Pt</u> | <u>Pd</u> |
|--------------------------------|------------------------------------------------------------------------------------------------------------------------------------|-----------|-----------|-----------|
| M-19 | Cumulate sample of peridotite, harzburgite and chromite; peridotite banded and layered and cut by harzburgite veinlets | 1 | 8 | 3 |
| M-20 | Altered syenite, white to pale green; cut by numerous dis- continuous quartz veinlets | 17 | 2 | 2 |
| M-21 | Silt | 2 | 20 | 16 |
| M-22 | Silt | 3 | 20 | 18 |
| M-23 | Silt | 1 | 44 | 18 |
| M-25 | Silt (no sample M-24) | 1 | 28 | 12 |
| M-26 | Silt | 1 | 22 | 13 |
| M-27 | Silt | 1 | 32 | 13 |
| M-28 | Heavy Mineral Sample | 1 | 24 | 12 |
| M-29 | Silt | 1 | 22 | 9 |
| M-30 | Silt | 1 | 14 | 10 |
| M-31 | Silt | 1 | 20 | 14 |
| M-32 | Silt | 1 | 31 | 15 |

| <u>Sample</u> <u>Number</u> | <u>Description</u> | <u>Au</u> | <u>Pt</u> | <u>Pd</u> |
|--------------------------------|---------------------------------------------------------|-----------|-----------|-----------|
| M-33 | Silt | 1 | 13 | 11 |
| M-34 | Silt | 1 | 19 | 11 |
| M-35 | Sample of tremolite, located near outcrop of syenite | 70 | 2 | 2 |
| M-36 | White milky syenite | 2 | 2 | 2 |
| M-37 | Soil; taken below a biotite- rich harzburgite | 1 | 32 | 4 |

10.0 WORK PERFORMED

On August 16, 1987 two men collected 16 rock samples, 18 silts, 1 soil and 1 heavy mineral sample. As well, approximately 300 hectares of the property were prospected.

All samples were run for 30 elements by ICP and also analyzed for Au, Pt, Pd and Rh by fire assay and atomic absorption.

11.0 RESULTS

Sampling and prospecting on the Michele 1 claim has revealed that areas underlain by harzburgite are somewhat more enriched in Pt values, particularly so when sulphides are visibly present. The maximum value for Pt (160 ppb) was from a silt crossing such an area. It is suspected that the enrichment in Pt values in this unit may be partially due to the presence of syenitic intrusions.

Despite lacking visible mineralization syenitic intrusions are of interest because they display weak gold values (up to 70 ppb).

In general, higher Cu values correlate with higher Pt/Pd values. There is no correspondence between Pt/Pd values and Ni or Cr values.

12.0 RECOMMENDATIONS

It is recommended that additional sampling, prospecting and mapping be carried out, particularly in the areas of the syenitic intrusions, to evaluate the potential for Pt enrichment.

13.0 REFERENCES

1. Roots, E.F., Geology and Mineral Deposits of Aiken Lake Map Area, B.C., G.S.C. Memoir 274, 1954
2. Irvine, T.N., Petrologic Studies of Ultramafic Rocks in the Aiken Lake Area, B.C. (94-C West Half), G.S.C. Paper 68-1, Part A, 1969, pp. 110-111
3. Monger, J.W.H., Upper Paleozoic Rocks of the Western Canadian Cordillera, G.S.C. Paper 73-1, Part A, 1974, pp. 27-28
4. Foster, F., The Polaris Complex, U.B.C. Bachelor of Science Thesis, 1974

APPENDIX I

STATEMENT OF COSTS

Labour

| | |
|------------------------------|-----------|
| 1 man for 3 days @ \$135/day | \$ 405.00 |
| 1 man for 3 days @ \$212/day | 636.00 |

Helicopter

| | |
|-----------------------------|--------|
| 1.4 hrs @ \$495/hr. | 693.00 |
| 147.0 litres @ \$1.00/litre | 147.00 |

Analyses

| | |
|-----------------------------------------------------------------------------------|--------|
| 16 rocks analyzed by ICP for 30 elements plus Pt,Pd,Rh,Au @ \$19/sample | 304.00 |
| 18 silts analyzed for 30 elements by ICP plus Pt,Pd,Rh,Au @ \$16.75/sample | 301.50 |
| 1 soil analyzed for 30 elements by ICP plus Pt,Pd,Rh,Au @ \$16.75/sample | 16.75 |
| 1 heavy mineral analyzed for 30 elements by ICP plus Pt,Pd,Rh,Au @ \$28.00/sample | 28.00 |

Accommodation and Food

| | |
|-----------------------|---------------|
| 2 days @ \$40/man/day | <u>160.00</u> |
|-----------------------|---------------|

| | |
|-----------|------------|
| SUB-TOTAL | \$2,691.25 |
|-----------|------------|

| | |
|---------------------------|--------------|
| Truck - 3 days @ \$50/day | 150.00 |
| Fuel | 37.50 |
| Drafting | 100.00 |
| Secretarial | 30.00 |
| Transportation | 100.27 |
| Airphotos | 35.00 |
| Reproduction | 25.00 |
| Maps and Equipment | <u>37.15</u> |

| | |
|-----------|------------------|
| SUB-TOTAL | <u>\$ 514.92</u> |
|-----------|------------------|

| | |
|-------|---------------------------------|
| TOTAL | <u><u><u>\$3,206.17</u></u></u> |
|-------|---------------------------------|

APPENDIX II

STATEMENT OF QUALIFICATIONS

1. I am a graduate of the University of British Columbia having graduated in 1969 with a Bachelor of Science in Geology.
2. I have practiced my profession since 1969 in mineral exploration, oil and gas exploration and coal exploration.
3. I have a direct interest in the Michele 1 Claim which is presently being held under option agreement by Esso Minerals Canada, a division of Esso Resources Canada Limited.

Ursula G. Mowat
Ursula G. Mowat

DATED THIS 24 DAY OF November, 1987 AT VANCOUVER, B.C.

APPENDIX III
GEOCHEMICAL RESULTS

1. SAMPLE PREPARATION

- a) Rocks of 250 - 1000 grams are crushed and pulverized.
- b) Soils and silts are sieved to -80 mesh. If sample does not have enough -80 mesh fraction, the -20 mesh portion is used.
- c) The heavy mineral sample is sieved to -20 mesh and then wet panned to 500 g using heavy mineral preparation by a liquid with a specific gravity of 2.96. The residual is dried and the magnetic fraction removed and pulverized. The pulverized portion is then analyzed.

2. DIGESTION

- a) A .50 gram prepared sample is digested with 3 mls of 3 parts HCl, 1 part HNO₃ and 2 parts H₂O at 95°C for one hour and then diluted to 10 ml with water. This digestion method is used for the 30 element ICP analysis and also atomic absorption analysis.
- b) For gold analysis a 10 gram sample is ignited at 600°C, digested with hot aqua regia, extracted by MIBK and then analyzed by graphite furnace atomic absorption.
- c) For Au, Pd, Pt, Rh, a 10.0 gram sample is fused with an Ag inquart with fire assay fluxes. After cupulation the dore head is dissolved and analyzed by atomic absorption.

Rock

| SAMPLE# | MO | CU | PB | ZN | AG | NI | CO | MN | FE | AS | U | AU | TH | SR | CD | SB | BI | V | CA | P | LA | CR | MG | BA | TI | B | AL | NA | K | W | AU** | PT** | PD** | RH** |
|-------------|-----|------|-----|-----|-----|-----|-----|------|------|-----|-----|-----|-----|-----|-----|-----|-----|-----|------|------|-----|-----|-------|-----|-----|------|------|------|-----|-----|------|------|------|------|
| | PPM | PPM | PPM | PPM | PPM | PPM | PPM | PPM | % | PPM | PPM | PPM | PPM | PPM | PPM | PPM | PPM | PPM | % | % | PPM | PPM | % | PPM | % | PPM | % | % | % | PPM | PPB | PPB | PPB | PPB |
| C-8 | 1 | 120 | 9 | 84 | .2 | 19 | 20 | 1017 | 5.80 | 8 | 5 | ND | 4 | 52 | 1 | 4 | 2 | 157 | 2.52 | .073 | 6 | 34 | 2.46 | 161 | .44 | 25 | 3.89 | .07 | .08 | 1 | 2 | 2 | 3 | 2 |
| C-13 | 1 | 89 | 8 | 87 | .2 | 8 | 9 | 881 | 4.47 | 9 | 5 | ND | 3 | 40 | 1 | 3 | 2 | 73 | 3.32 | .054 | 6 | 13 | 1.31 | 83 | .34 | 11 | 3.79 | .06 | .05 | 1 | 2 | 2 | 3 | 2 |
| C-53 | 1 | 81 | 11 | 71 | .2 | 25 | 16 | 852 | 5.47 | 49 | 5 | ND | 2 | 18 | 1 | 2 | 2 | 139 | 2.14 | .033 | 6 | 64 | 2.45 | 84 | .02 | 2 | 2.40 | .08 | .04 | 1 | 2 | 2 | 4 | 2 |
| M-1 | 1 | 3 | 7 | 19 | .2 | 193 | 34 | 715 | 3.98 | 8 | 5 | ND | 1 | 93 | 1 | 10 | 5 | 46 | 8.39 | .006 | 2 | 414 | 8.55 | 19 | .01 | 4 | .32 | .01 | .03 | 1 | 2 | 4 | 2 | 2 |
| M-2 | 1 | 4 | 3 | 22 | .1 | 125 | 35 | 701 | 4.18 | 32 | 5 | ND | 1 | 67 | 1 | 5 | 2 | 49 | 6.40 | .003 | 2 | 671 | 4.72 | 261 | .01 | 2 | .62 | .01 | .01 | 1 | 1 | 5 | 4 | 2 |
| M-3 | 1 | 3 | 3 | 2 | .1 | 3 | 1 | 37 | .89 | 7 | 5 | ND | 7 | 8 | 1 | 3 | 2 | 2 | .04 | .001 | 4 | 5 | .05 | 10 | .01 | 2 | .12 | .11 | .01 | 1 | 32 | 2 | 2 | 2 |
| M-5 | 1 | 61 | 9 | 62 | .2 | 3 | 10 | 575 | 3.90 | 4 | 5 | ND | 3 | 42 | 1 | 5 | 2 | 95 | 2.60 | .117 | 9 | 5 | .96 | 12 | .25 | 2738 | 1.58 | .10 | .04 | 1 | 2 | 2 | 2 | 2 |
| M-6 | 1 | 229 | 11 | 60 | .2 | 8 | 17 | 750 | 4.80 | 11 | 5 | ND | 2 | 129 | 1 | 2 | 2 | 166 | 3.64 | .059 | 4 | 5 | 1.24 | 81 | .16 | 16 | 2.08 | .06 | .08 | 1 | 6 | 5 | 11 | 2 |
| M-7 | 1 | 26 | 6 | 32 | .2 | 5 | 10 | 1253 | 3.77 | 10 | 5 | ND | 1 | 56 | 1 | 5 | 2 | 53 | 8.26 | .011 | 2 | 4 | 1.89 | 109 | .04 | 18 | .38 | .01 | .01 | 2 | 2 | 2 | 2 | 2 |
| M-8 | 1 | 1352 | 8 | 40 | .6 | 73 | 19 | 502 | 5.12 | 8 | 6 | ND | 3 | 407 | 1 | 4 | 2 | 211 | 3.58 | .058 | 2 | 111 | 2.21 | 67 | .25 | 14 | 1.51 | .21 | .13 | 1 | 9 | 25 | 55 | 2 |
| M-9 | 1 | 273 | 11 | 50 | .3 | 42 | 25 | 477 | 7.04 | 6 | 5 | ND | 2 | 83 | 1 | 2 | 2 | 293 | 2.15 | .021 | 2 | 60 | 2.40 | 64 | .36 | 8 | 1.88 | .44 | .22 | 1 | 2 | 19 | 25 | 2 |
| M-10 | 1 | 972 | 13 | 47 | .2 | 78 | 57 | 444 | 8.78 | 5 | 5 | ND | 2 | 61 | 1 | 2 | 2 | 264 | 2.00 | .105 | 3 | 49 | 1.80 | 45 | .27 | 2 | 1.36 | .34 | .14 | 1 | 3 | 21 | 38 | 2 |
| M-14 | 1 | 3606 | 4 | 34 | 2.6 | 436 | 30 | 380 | 3.63 | 3 | 5 | ND | 1 | 4 | 1 | 2 | 2 | 18 | .17 | .003 | 2 | 236 | 4.84 | 11 | .03 | 17 | .20 | .02 | .01 | 1 | 73 | 75 | 111 | 3 |
| M-16 | 1 | 9 | 2 | 26 | .1 | 231 | 31 | 458 | 3.06 | 3 | 5 | ND | 1 | 2 | 1 | 2 | 2 | 13 | .14 | .004 | 2 | 261 | 5.64 | 3 | .02 | 5 | .13 | .01 | .01 | 1 | 1 | 18 | 2 | 3 |
| M-17 | 1 | 21 | 3 | 49 | .1 | 742 | 83 | 912 | 7.47 | 8 | 5 | ND | 1 | 15 | 1 | 2 | 2 | 7 | .33 | .004 | 2 | 233 | 18.69 | 10 | .01 | 139 | .07 | .01 | .01 | 1 | 2 | 13 | 3 | 2 |
| M-19 | 1 | 7 | 3 | 61 | .1 | 839 | 82 | 1245 | 9.28 | 4 | 5 | ND | 1 | 4 | 1 | 3 | 4 | 41 | .07 | .004 | 2 | 464 | 16.12 | 8 | .04 | 33 | .09 | .01 | .01 | 1 | 1 | 8 | 3 | 2 |
| M-20 | 1 | 6 | 4 | 4 | .1 | 5 | 1 | 15 | .22 | 3 | 5 | ND | 5 | 25 | 1 | 5 | 2 | 1 | .46 | .001 | 2 | 4 | .15 | 19 | .01 | 6 | 9.15 | 8.55 | .03 | 1 | 17 | 2 | 2 | 2 |
| M-35 | 1 | 4 | 24 | 2 | .2 | 10 | 1 | 82 | .18 | 2 | 5 | ND | 10 | 949 | 1 | 3 | 2 | 1 | 7.29 | .005 | 10 | 5 | 1.26 | 489 | .01 | 2 | 2.63 | 1.34 | .14 | 2 | 70 | 2 | 2 | 2 |
| M-36 | 1 | 4 | 13 | 2 | .3 | 18 | 1 | 50 | .30 | 2 | 5 | ND | 17 | 929 | 1 | 2 | 2 | 10 | 2.25 | .003 | 30 | 8 | .43 | 314 | .01 | 2 | 2.66 | .95 | .12 | 1 | 2 | 2 | 2 | 2 |
| STD C/FA-5X | 18 | 57 | 40 | 131 | 7.4 | 67 | 28 | 1041 | 3.92 | 41 | 20 | 7 | 38 | 47 | 19 | 17 | 19 | 57 | .46 | .091 | 37 | 57 | .86 | 176 | .08 | 34 | 1.81 | .08 | .13 | 13 | 103 | 97 | 96 | 21 |

SILT

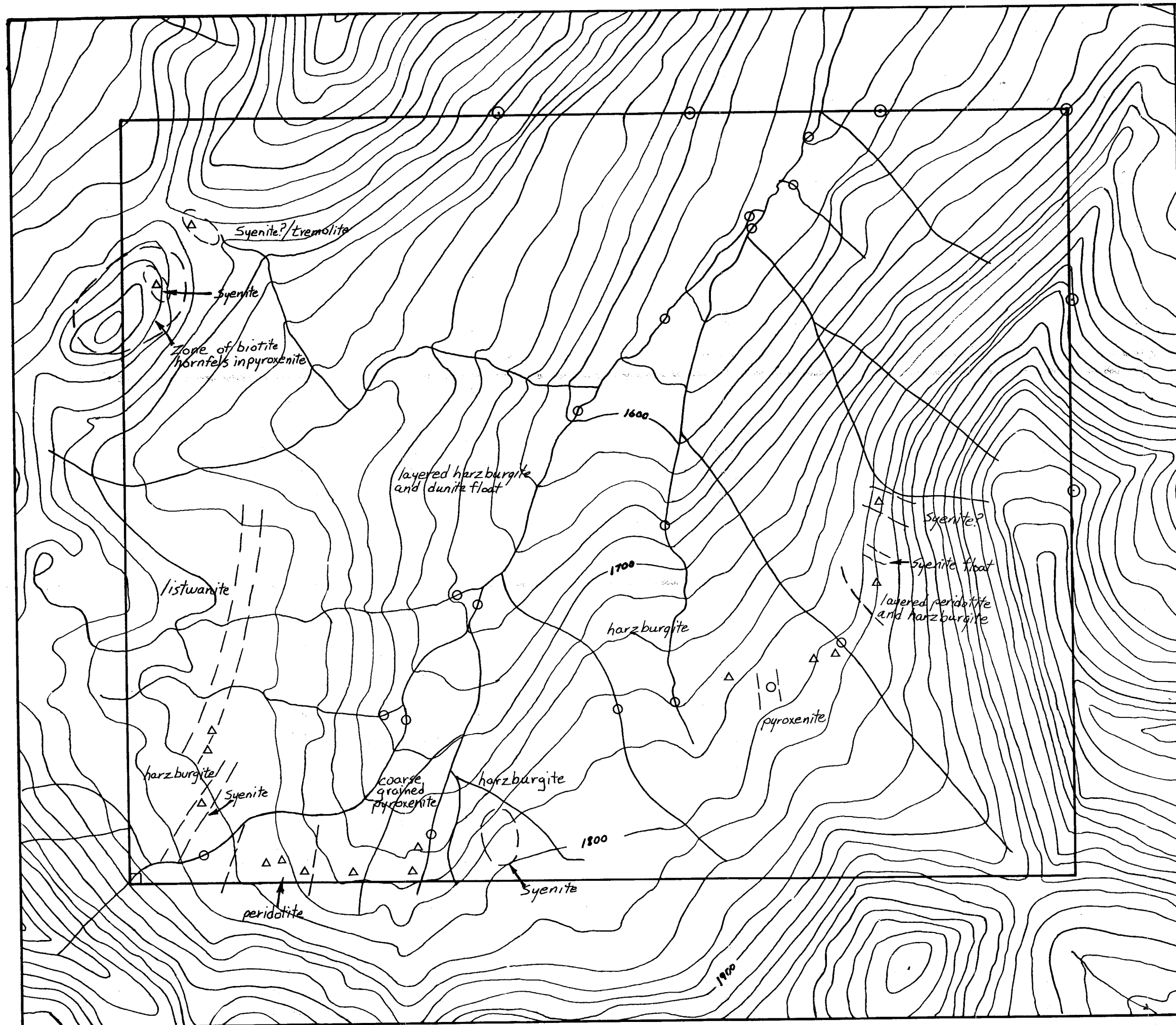
| SAMPLE# | MO | CU | PB | ZN | AG | NI | CO | MN | FE | AS | U | AU | TH | SR | CD | SB | BI | V | CA | P | LA | CR | MG | BA | TI | B | AL | NA | K | W | AU# | PT# | PD# | RM# |
|-------------|-----|-----|-----|-----|-----|-----|-----|------|------|-----|-----|-----|-----|-----|-----|-----|-----|-----|-----|------|-----|-----|------|-----|-----|-----|------|-----|-----|-----|-----|-----|-----|-----|
| | PPM | PPM | PPM | PPM | PPM | PPM | PPM | PPM | % | PPM | PPM | PPM | PPM | PPM | PPM | PPM | PPM | PPM | % | % | PPM | PPM | % | PPM | % | PPM | % | % | % | PPM | PPB | PPB | PPB | PPB |
| M-4 | 1 | 186 | 15 | 84 | .4 | 94 | 30 | 676 | 7.87 | 26 | 5 | ND | 2 | 74 | 1 | 14 | 2 | 149 | .80 | .113 | 5 | 278 | 1.73 | 202 | .04 | 10 | 1.79 | .06 | .08 | 1 | 6 | 160 | 19 | 2 |
| M-11 | 1 | 42 | 7 | 28 | .2 | 141 | 25 | 315 | 2.98 | 2 | 5 | ND | 1 | 35 | 1 | 2 | 2 | 58 | .67 | .034 | 2 | 269 | 3.28 | 42 | .11 | 23 | 1.21 | .09 | .15 | 1 | 1 | 45 | 7 | 3 |
| M-12 | 1 | 125 | 9 | 27 | .1 | 132 | 23 | 273 | 4.79 | 5 | 5 | ND | 1 | 23 | 1 | 2 | 2 | 147 | .66 | .040 | 2 | 409 | 1.81 | 18 | .14 | 4 | .82 | .07 | .04 | 1 | 2 | 22 | 20 | 2 |
| M-13 | 1 | 37 | 12 | 39 | .1 | 189 | 31 | 411 | 4.20 | 5 | 5 | ND | 1 | 54 | 1 | 2 | 2 | 80 | .77 | .063 | 2 | 309 | 3.84 | 43 | .13 | 12 | 1.53 | .11 | .16 | 1 | 1 | 41 | 16 | 2 |
| M-15 | 1 | 114 | 9 | 32 | .3 | 201 | 29 | 395 | 3.97 | 2 | 5 | ND | 1 | 50 | 1 | 2 | 2 | 77 | .65 | .056 | 2 | 316 | 3.92 | 32 | .11 | 14 | 1.28 | .07 | .07 | 1 | 2 | 20 | 18 | 2 |
| M-18 | 1 | 111 | 10 | 27 | .1 | 114 | 28 | 361 | 3.77 | 5 | 5 | ND | 1 | 26 | 1 | 2 | 2 | 89 | .82 | .038 | 2 | 243 | 2.86 | 29 | .13 | 6 | 1.11 | .06 | .07 | 1 | 1 | 23 | 19 | 2 |
| M-21 | 1 | 99 | 8 | 34 | .2 | 200 | 30 | 416 | 3.97 | 3 | 5 | ND | 1 | 38 | 1 | 4 | 2 | 75 | .67 | .049 | 2 | 308 | 3.79 | 35 | .10 | 16 | 1.20 | .07 | .04 | 1 | 2 | 20 | 16 | 2 |
| M-22 | 1 | 58 | 13 | 38 | .1 | 344 | 36 | 477 | 4.78 | 7 | 5 | ND | 1 | 27 | 1 | 9 | 4 | 80 | .47 | .035 | 2 | 398 | 5.53 | 27 | .07 | 15 | .81 | .05 | .05 | 1 | 3 | 20 | 18 | 2 |
| M-23 P | 1 | 63 | 6 | 34 | .3 | 179 | 34 | 504 | 4.60 | 8 | 5 | ND | 1 | 24 | 1 | 2 | 2 | 82 | .45 | .027 | 2 | 343 | 3.51 | 34 | .07 | 15 | .64 | .07 | .03 | 2 | 1 | 44 | 18 | 3 |
| M-25 P | 1 | 87 | 8 | 46 | .3 | 336 | 50 | 653 | 5.73 | 7 | 5 | ND | 1 | 24 | 1 | 10 | 2 | 73 | .40 | .028 | 2 | 358 | 5.92 | 47 | .06 | 21 | .70 | .08 | .04 | 3 | 1 | 28 | 12 | 2 |
| M-26 P | 1 | 38 | 7 | 56 | .1 | 266 | 55 | 837 | 6.08 | 12 | 5 | ND | 1 | 24 | 1 | 10 | 4 | 75 | .38 | .027 | 2 | 314 | 5.89 | 64 | .05 | 13 | .61 | .04 | .01 | 1 | 1 | 22 | 13 | 3 |
| Insert 1 | 1 | 66 | 6 | 37 | .1 | 256 | 36 | 505 | 5.03 | 9 | 5 | ND | 1 | 26 | 1 | 4 | 3 | 83 | .38 | .023 | 2 | 316 | 4.46 | 35 | .06 | 17 | .61 | .06 | .03 | 2 | 1 | 2 | 2 | 2 |
| M-27 | 1 | 66 | 6 | 37 | .1 | 256 | 36 | 505 | 5.03 | 9 | 5 | ND | 1 | 26 | 1 | 4 | 3 | 83 | .38 | .023 | 2 | 316 | 4.46 | 35 | .06 | 17 | .61 | .06 | .03 | 2 | 1 | 32 | 13 | 2 |
| M-29 | 1 | 59 | 8 | 35 | .3 | 129 | 28 | 413 | 4.33 | 8 | 5 | ND | 1 | 41 | 1 | 2 | 2 | 90 | .61 | .037 | 2 | 188 | 2.86 | 39 | .09 | 14 | .92 | .06 | .05 | 1 | 1 | 22 | 9 | 2 |
| M-30 | 1 | 39 | 5 | 20 | .1 | 113 | 17 | 247 | 3.20 | 2 | 5 | ND | 1 | 16 | 1 | 2 | 2 | 76 | .37 | .025 | 2 | 249 | 2.13 | 14 | .07 | 8 | .52 | .05 | .01 | 1 | 1 | 14 | 10 | 2 |
| M-31 P | 1 | 69 | 8 | 44 | .1 | 179 | 36 | 553 | 5.25 | 13 | 5 | ND | 1 | 51 | 1 | 2 | 2 | 95 | .61 | .040 | 2 | 204 | 3.67 | 50 | .09 | 12 | .90 | .06 | .04 | 2 | 1 | 20 | 14 | 3 |
| M-32 | 1 | 80 | 12 | 49 | .1 | 451 | 42 | 666 | 4.39 | 3 | 5 | ND | 1 | 32 | 1 | 6 | 8 | 62 | .54 | .052 | 2 | 445 | 5.83 | 43 | .07 | 13 | 1.42 | .07 | .06 | 1 | 1 | 31 | 15 | 2 |
| M-33 | 1 | 45 | 7 | 23 | .2 | 121 | 20 | 287 | 2.97 | 8 | 5 | ND | 1 | 22 | 1 | 2 | 2 | 62 | .42 | .027 | 2 | 209 | 2.48 | 22 | .07 | 11 | .65 | .05 | .02 | 2 | 1 | 13 | 11 | 2 |
| M-34 | 1 | 57 | 6 | 31 | .2 | 169 | 27 | 403 | 3.80 | 10 | 5 | ND | 1 | 30 | 1 | 2 | 2 | 72 | .48 | .031 | 2 | 252 | 3.36 | 35 | .07 | 10 | .80 | .06 | .05 | 1 | 1 | 19 | 11 | 3 |
| STD C/FA-5X | 18 | 58 | 40 | 132 | 7.2 | 68 | 28 | 1047 | 4.09 | 42 | 17 | 8 | 37 | 49 | 18 | 17 | 20 | 57 | .50 | .090 | 37 | 61 | .91 | 178 | .08 | 35 | 1.91 | .08 | .12 | 14 | 103 | 100 | 101 | 18 |

P-20 MESH, PULVERIZED

| SAMPLE# | MO PPM | CU PPM | PB PPM | ZN PPM | AG PPM | NI PPM | CO PPM | MN PPM | FE % | AS PPM | U PPM | AU PPM | TH PPM | SR PPM | CD PPM | SB PPM | BI PPM | V PPM | CA % | P % | LA PPM | CR PPM | MG % | BA PPM | TI % | B PPM | AL % | NA % | K % | W PPM | AU** PPB | PT** PPB | PD** PPB | RH** PPB |
|-----------|-----------|-----------|-----------|-----------|-----------|-----------|-----------|-----------|---------|-----------|----------|-----------|-----------|-----------|-----------|-----------|-----------|----------|---------|--------|-----------|-----------|---------|-----------|---------|----------|---------|---------|--------|----------|-------------|-------------|-------------|-------------|
| SOIL M-37 | 1 | 9 | 11 | 36 | .1 | 547 | 45 | 477 | 5.08 | 2 | 5 | ND | 1 | 11 | 1 | 3 | 4 | 154 | .23 | .013 | 2 | 568 | 10.63 | 219 | .34 | 2 | 3.03 | .02 | .13 | 2 | 1 | 32 | 4 | 2 |

ESSO MINERALS FILE # 87-3514

| SAMPLE# | MO | CU | PB | ZN | AG | NI | CO | MN | FE | AS | U | AU | TH | SR | CD | SB | BI | V | CA | P | LA | CR | MG | BA | TI | B | AL | NA | K | W | AU## | PT## | PD## | RH## | H.M. | H.M. |
|-----------------|--------------|----------------|---------------|----------------|----------------|---------------|---------------|-----------------|-----------------|---------------|--------------|---------------|--------------|----------------|--------------|---------------|--------------|----------------|-----------------|-----------------|---------------|---------------|-----------------|----------------|----------------|---------------|-----------------|----------------|----------------|--------------|----------------|---------------|--------------|--------------|----------------|------------------|
| | PPM | PPM | PPM | PPM | PPM | PPM | PPM | PPM | % | PPM | PPM | PPM | PPM | PPM | PPM | PPM | PPM | PPM | % | % | PPM | PPM | % | PPM | % | % | % | % | % | PPM | PPB | PPB | PPB | PPB | % | GM |
| C-1 | 2 | 171 | 27 | 125 | 2.3 | 24 | 15 | 865 | 5.84 | 82 | 5 | ND | 3 | 111 | 1 | 20 | 2 | 126 | 1.78 | .072 | 11 | 44 | 1.33 | 852 | .27 | 19 | 2.30 | .06 | .08 | 1 | 904 | 55 | 2 | 3 | .07 | 2.20 |
| C-3 | 3 | 52 | 31 | 93 | .3 | 35 | 23 | 705 | 6.93 | 48 | 5 | ND | 3 | 123 | 1 | 2 | 2 | 155 | 2.08 | .089 | 9 | 53 | 1.63 | 195 | .31 | 19 | 2.65 | .06 | .09 | 1 | 83 | 47 | 2 | 2 | .05 | 2.40 |
| C-4 | 2 | 39 | 23 | 86 | .3 | 36 | 19 | 690 | 6.18 | 33 | 5 | ND | 3 | 119 | 1 | 2 | 2 | 133 | 2.17 | .084 | 9 | 59 | 1.83 | 455 | .28 | 24 | 2.86 | .06 | .10 | 1 | 30 | 55 | 2 | 3 | .05 | 2.10 |
| CL-1 | 2 | 22 | 10 | 42 | .1 | 57 | 12 | 1135 | 2.97 | 16 | 5 | ND | 1 | 54 | 1 | 2 | 2 | 77 | 1.36 | .032 | 3 | 86 | 1.32 | 61 | .20 | 8 | 1.44 | .08 | .05 | 2 | 1 | 5 | 4 | 2 | .74 | 36.40 |
| *M-2B | 1 | 19 | 9 | 14 | .1 | 53 | 17 | 215 | 6.31 | 7 | 5 | ND | 1 | 35 | 1 | 2 | 2 | 225 | .83 | .013 | 2 | 164 | 1.14 | 12 | .14 | 2 | .60 | .09 | .04 | 1 | 1 | 24 | 12 | 2 | 4.58 | 302.00 |



16,574

REVISIONS

| By | Date | Appov. By |
|----|------|-----------|
| | | |
| | | |
| | | |

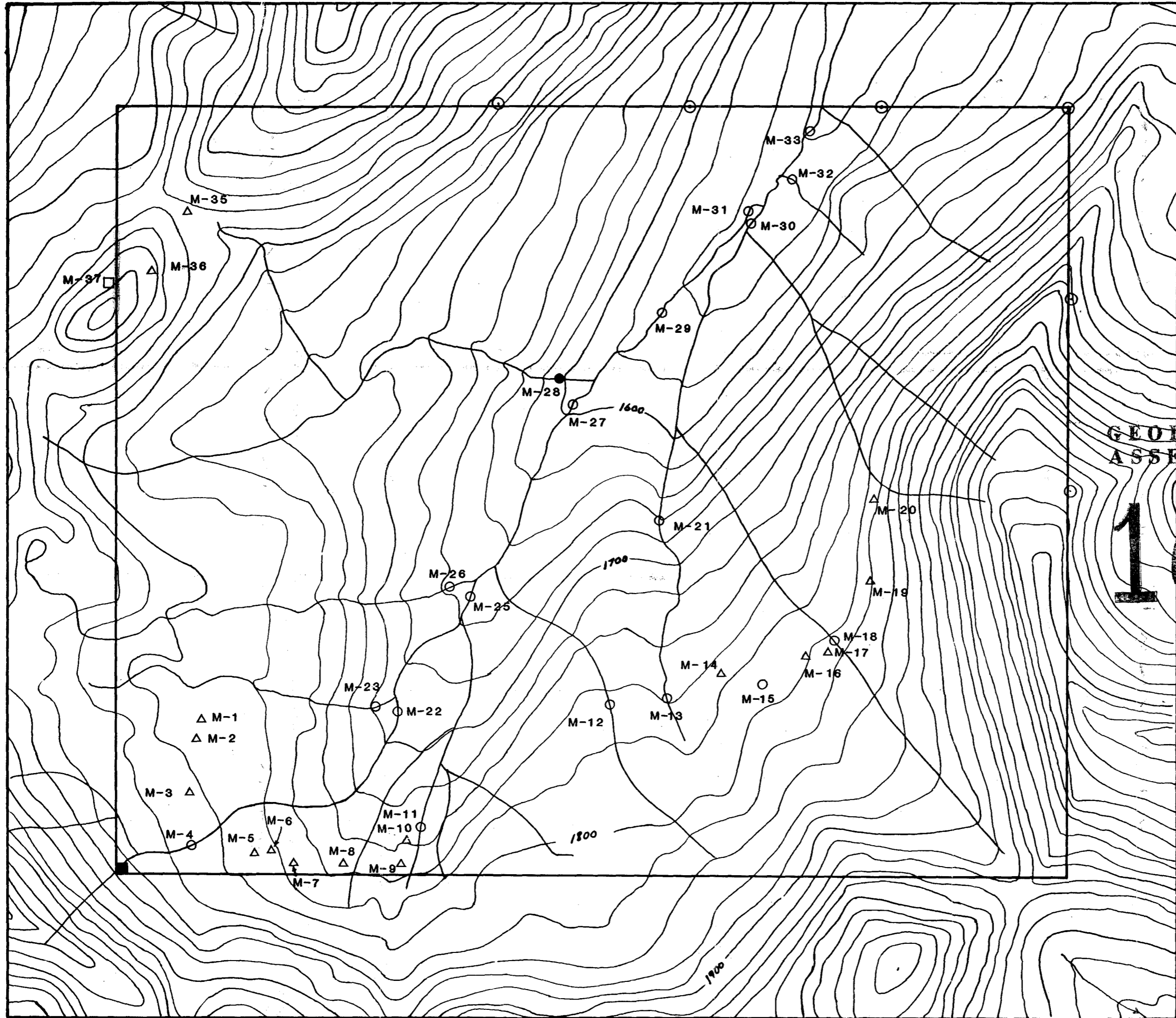
ESSO MINERALS CANADA

MICHELE 1 CLAIM
Geology



To accompany a report by U. Mowat

| | |
|---------------------|-------------|
| Project No: 121 | Report No: |
| Mining Div: Omineca | NTS: 94C/5E |
| Survey By: U. Mowat | Drafted By: |
| Date: | Map No: |



- LEGEND**
- Silt Sample
 - Heavy Mineral Sample
 - Soil Sample
 - △ Rock Sample
 - Legal Corner Post
 - ⊙ Claim Post

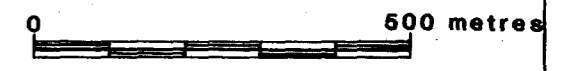
**GEOLOGICAL BRANCH
ASSESSMENT REPORT**

16,574

REVISIONS

| By | Date | Appov. By |
|----|------|-----------|
| | | |
| | | |
| | | |

ESSO MINERALS CANADA
MICHELE 1 CLAIM
 Sample Locations



To accompany a report by U. Mowat

| | |
|---------------------|-------------|
| Project No: 121 | Report No: |
| Mining Div: Omineca | NTS: 94C/5E |
| Survey By: U. Mowat | Drafted By: |
| Date: | Map No: |

56°30'

10 NORTH, SEE MAP 94C/12

M 94C/5E

6

N
4
↑

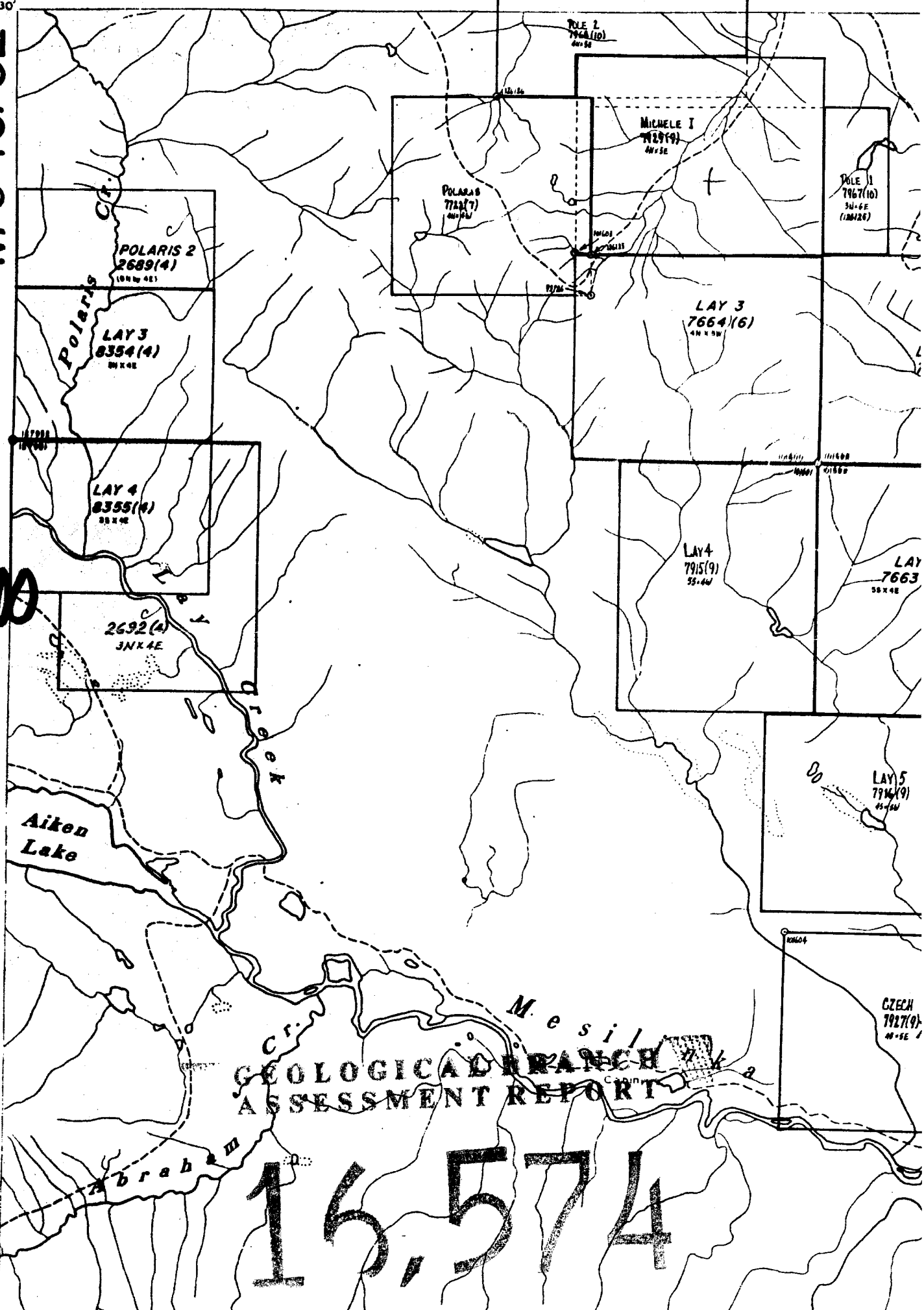
1:50,000

↓

5

4

94C/5W



GEOLOGICAL BRANCH
ASSESSMENT REPORT

16,574