

GEOLOGICAL BRANCH
ASSESSMENT REPORT

LOG NO: 1204 RD.

ACTION:

Exp.

FILE NO: 87-843-16582

16,582

GEOCHEMICAL REPORT

ON CLAIMS

L3755 (PHYLLIS), L1870 (LOST CUP) AND L4239 (NINA)

SITUATED IN THE

REVELSTOKE MINING DIVISION

LATITUDE 50° ~~41.5'~~ 50'01"
LONGITUDE 117° ~~39.5'~~ 39'46"

N.T.S. 82-K/13-E

HELD UNDER OPTION BY:

Owner/Operator GRANGES EXPLORATION LTD.
23RD FLOOR
885 WEST GEORGIA STREET
VANCOUVER, B.C.
V6C 3E8

NOVEMBER 27, 1987

FILMED

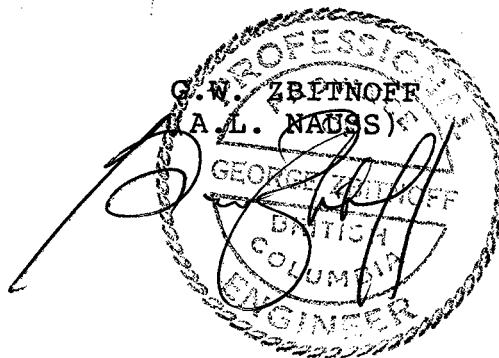


TABLE OF CONTENTS

	<u>Page No.</u>
INTRODUCTION	1
CLAIMS	1
LOCATION AND ACCESS	1
TOPOGRAPHY AND VEGETATION	2
GEOLOGY	2
GEOCHEMICAL SAMPLING	2
RESULTS	2
BREAKDOWN OF EXPENDITURES	3
AUTHORS QUALIFICATIONS	5

ENCLOSURES

PLAN OF 1987 GRID LAYOUT ON WINDFLOWER PROJECT AREA (C-706)	
1 GEOCHEMICAL SAMPLING PLAN - GOLD	
1 GEOCHEMICAL SAMPLING PLAN - LEAD	
1 GEOCHEMICAL SAMPLING PLAN - COPPER	
1 GEOCHEMICAL SAMPLING PLAN - ARSENIC	
1 GEOCHEMICAL SAMPLING PLAN - SILVER	
1 GEOCHEMICAL SAMPLING PLAN - ZINC	

INTRODUCTION:

The reverted crown grant claims L1870 (Lost Cup), L4239 (Nina) and L3744 (Phyllis) form part of the Windflower property comprised of 14 crown granted claims, 3 reverted crown-granted claims and 6 located claims.

The property lies approximately 35 Km southeast of Revelstoke and is accessible both from the TransCanada Highway at Revelstoke and B.C. Highway 23 from Revelstoke and Nakusp by well maintained roads.

The property is currently held by Granges Exploration Ltd. of Vancouver, B.C. under an option agreement with Windflower Mining Company of Vancouver, B.C.

CLAIMS:

The work was carried out on the following claims:

<u>Record No.</u>	<u>Name</u>	<u>Size</u>
L1870 / 2282	Lost Cup	1 unit
L4239 / 2275	Nina	1 unit
L3755 / 2281	Phyllis	1 unit

LOCATION AND ACCESS:

The claims are located in the Revelstoke Mining Division, British Columbia. The property lies about 4 air kilometers north of Camborne, B.C. and about 35 Km southeast of Revelstoke at Latitude 50°, 49.5' N and Longitude 117°, 39.5' W, on mapsheet 82K/13E of the National Topographic System.

Elevations on the property range from 488 - 1981 m (1600 - 6500 feet) above sea level, with the lowest point at the Incamappleaux (Fish) River on the east, to a high at the northwest boundary on the southeast slope on the Canaplix Mountain.

Road access to the property is very good as it is situated within an active logging area, with well-maintained haulage roads and branch roads throughout much of the property.

TOPOGRAPHY AND VEGETATION:

The claims are located in the rugged Selkirk Mountain system. The main showings are located at about elevation 1040 m on a bench with moderate slopes.

Much of the property consists of heavily timbered and logged-over slopes with some rock bluffs and with more open alpine areas at higher elevations. Most of the rock outcrop is covered by a heavy layer of moss, making prospecting and geological mapping a slow process.

The area has a high snowfall, but due to a southeast exposure and moderate elevation in the area of the main showings, they are usually snowfree from about early May to late October.

GEOLOGY:

The claims are underlain by metamorphic rocks of the early Paleozoic Lardeau group of phyllites and altered greenstone. It includes the Broadview formation that trends in a general northwest direction for 100 miles and is host rock to many prospects and former producing mines. Gold is the principal economic mineral found in quartz veins and altered rock.

GEOCHEMICAL SAMPLING:

"B" horizon soil samples were taken where available. Sample depths varied between 5 cm and 30 cm. The samples were analysed by Echo Tech laboratories Ltd. of Kamloops, B.C.

ICP analysis was conducted on the samples whereby a .500 gram sample is digested with 3 ml 3-1-2 HCL-HNO₃-H₂O at 95 ° for one hour and is diluted to 10 ml with water. This leach is partial for Mn, Fe, Ca, P, Cr, Mg, Ba, Ti, B, Al, Na, K, W, Si, Zr, Ce, Sn, Y, Nb and Ta. Au detection limit by ICP is 3 ppm therefore Au analysis is done by AA from 10 gram sample.
AA from 10 gram sample.

RESULTS:

Numerous geochemical anomalies were encountered and are being followed up with prospecting.

BREAKDOWN OF EXPENDITURES:

Claim L1870 (Lost Cup)

Assays 141 samples @ \$12.65 per sample \$ 1,783.65

Echo-Tech Laboratories Ltd.
10041 E. Trans Canada Hwy.
R.R. #2, Kamloops, B.C.
V2C 2J3

Personnel

Supervision: P.J. DeVeaux 4 days @ \$175.00 \$ 700.00
Helpers: J. Brouillard 4 days @ \$ 80.00 \$ 320.00
N. Juulsen 4 days @ \$ 55.00 \$ 220.00

Report Preparation and Drafting

A.L. Nauss and C. Ulanday 1 day @ \$219.05/3 \$ 73.01

Administration \$ 309.67

TOTAL \$ 3,406.33

Claim L4239 (Nina)

Assays 131 samples @ \$12.65 per sample \$ 1,657.15

Personnel

Supervision: P.J. DeVeaux 3.5 days @ \$175.00 \$ 612.50
Helpers: J. Brouillard 3.5 days @ \$ 80.00 \$ 280.00
N. Juulsen 3.5 days @ \$ 55.00 \$ 192.50

Report Preparation and Drafting

A.L. Nauss and C. Ulanday 1 day @ \$219.05/3 \$ 73.01

Administration \$ 281.52

TOTAL \$ 3,096.68

BREAKDOWN OF EXPENDITURES (CONT'D):

Claim L3755 (Phyllis)

Assays 163 samples @ \$12.65 per sample \$ 2,061.95

Echo Tech Laboratories Ltd.
10041 E. Trans Canada Hwy.
R.R. #2, Kamloops, B.C.
V2C 2J3

Personnel

Supervision: P.J. DeVeaux 3.5 days @ \$175.00 \$ 612.50

Helpers: K. Shanks 3.5 days @ \$ 80.00 \$ 280.00
S. Melnyk 3.5 days @ \$ 60.00 \$ 210.00

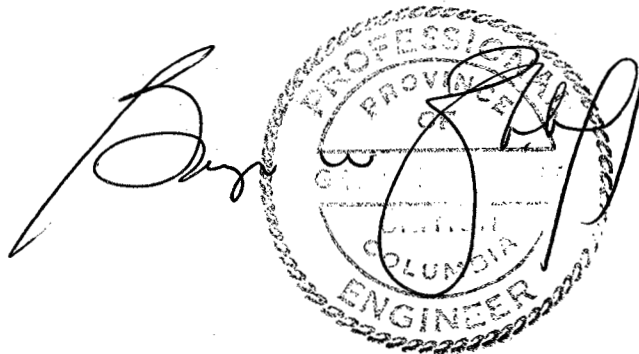
Report Preparation and Drafting

A.L. Nauss and C. Ulanday 1 day at \$219.05/3 \$ 73.02

Administration \$ 323.75

TOTAL \$ 3,561.22

GRAND TOTAL \$ 10,064.35

A handwritten signature in black ink is written over a circular professional engineer stamp. The stamp contains the text "PROFESSIONAL ENGINEER" around the top and "PROVINCE OF BRITISH COLUMBIA" around the bottom. The signature is written in a cursive style.

STATEMENT OF QUALIFICATIONS
GEORGE W. ZBITNOFF
5160 CLIFF PLACE
DELTA, B.C.

Name: Zbitnoff, George William

Birth Date: August 15, 1938

Birthplace: Saskatoon, Saskatchewan

Graduated with Grade 12 matriculation from
Blaine Lake High School in 1955.

Graduated from University of Saskatchewan with a
B.A. (Geology and chemistry majors) in 1963.

Professional

- Associations:
- Member of the Association of Professional Engineers of the Province of Manitoba.
 - Member of the Association of Professional Engineers of the Province of British Columbia since 1973.
 - Member of the Canadian Institute of Mining and Metallurgy.

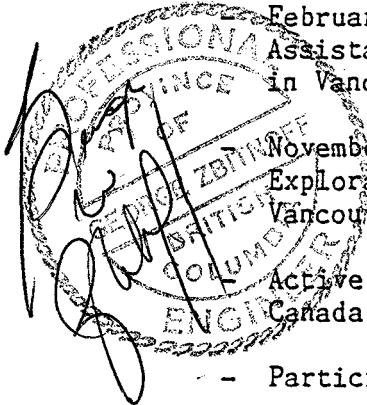
- Experience:
- Pre-graduation experience in geology with the Department of Mineral Resources of Saskatchewan.
 - May 1962 - Two and one half years, field geologist with Hudson Bay Exploration and Development, Flin Flon area.
 - January 1965 - Six years, field and resident geologist with Noranda Exploration Ltd., Flin Flon area.

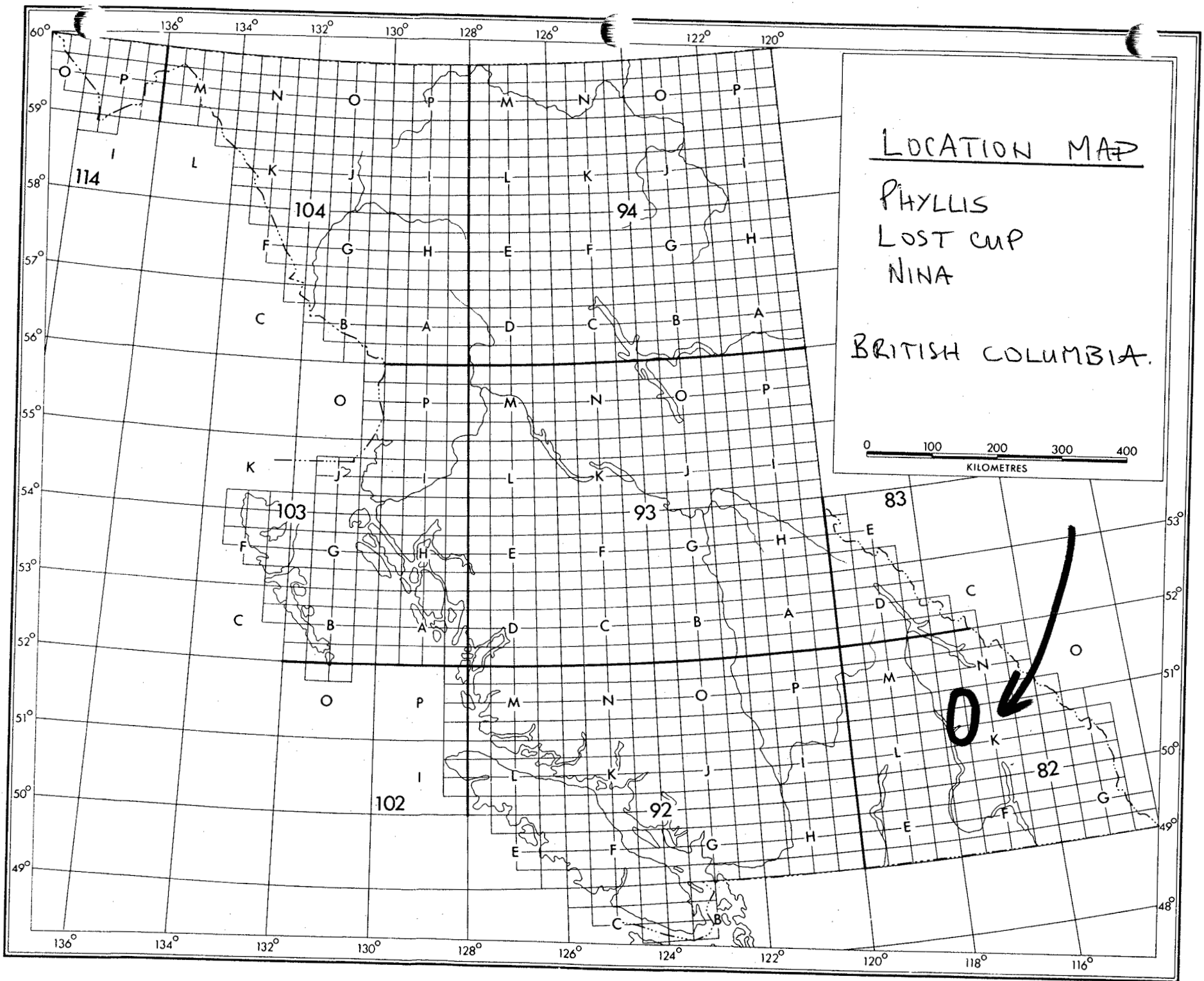
February 1971 - Twelve and one half years,
Assistant Manager, Granges Exploration Aktiebolag
in Vancouver, B.C.

November 1983 to present - Vice President
Exploration, Granges Exploration Ltd. in
Vancouver, B.C.

Active geological experience in all provinces of
Canada and parts of the United States and Mexico.

- Participated in the discovery of Trout Lake Mine.

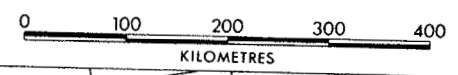




LOCATION MAP

PHYLLIS
LOST CUP
NINA

BRITISH COLUMBIA.



N
4

CLAIM MAP

82K/13E

GEOLOGICAL BRANCH ASSESSMENT REPORT

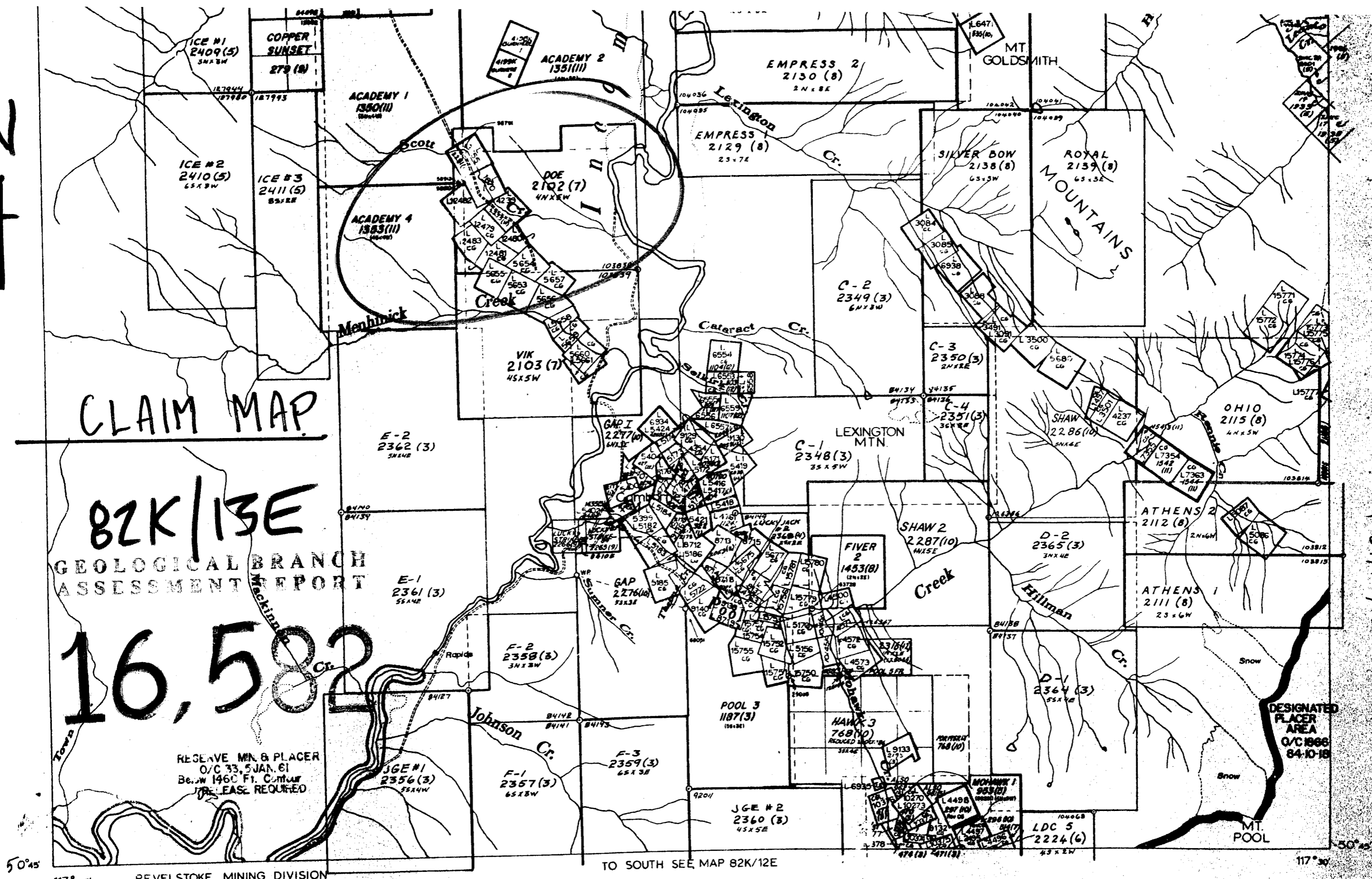
16,582

RESERVE MIN. & PLACER
O/C 33, 5 JAN. 61
Below 1460 Ft. Contour
RELEASE REQUIRED

JGE #1
2356 (3)
55 X 4 W

F-1
2357 (3)
65 X 3 W

JGE #2
2360 (3)
45 X 5 E



50°45' 117° 45' REVELSTOKE MINING DIVISION TO SOUTH SEE MAP 82K/12E 117° 30' 50°45'



UNLESS VERIFIED OR SURVEYED, THE MAP PORTION OF A CLAIM COVERED HEREIN IS BASED ON THE LOCATOR'S SURVEY, FOR THE TIME INFORMATION, AND IS TO THE EFFECT OF THE SAME. SYMBOL "C" INDICATES CLAIM HAS FORFEITED.

DATE OF MICROFILM 8/12/10

DEPARTMENT OF MINES AND PETROLEUM RESOURCES
VICTORIA, B.C.

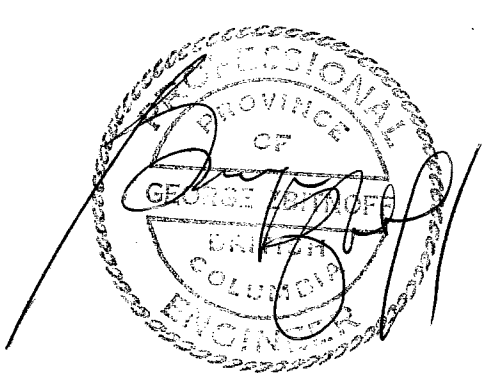
MINERAL CLAIM MAP 82K/13E (M)

For up-to-date information on claims in any area apply to the Mining Recorder for the Mining Division concerned.

This map is prepared to serve as a guide to the positions of located mineral claims and/or Placer Mining Leases only. Unsurveyed claims and leases are plotted from locators' sketches and are not guaranteed. Letters c.g. indicate claim is Crown-Granted. Symbol "C" indicates claim has forfeited.

16,582

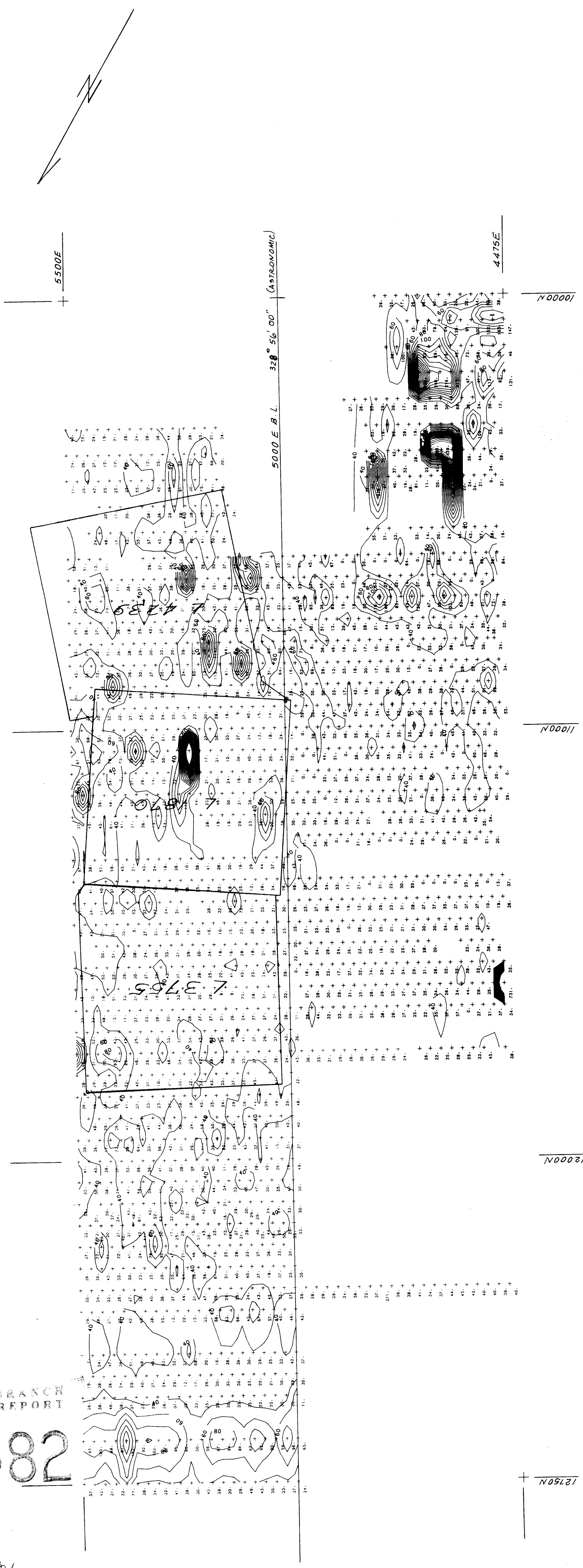
PROFESSIONAL BRANCH
WINDFLOWER LEAD GEOCHEM - BATCH 1 7/29/87



WINDFLOWER LEAD GEOCHEM - BATCH 1 7/29/87

SCALE 1:5000

PPM



1000N

1000N

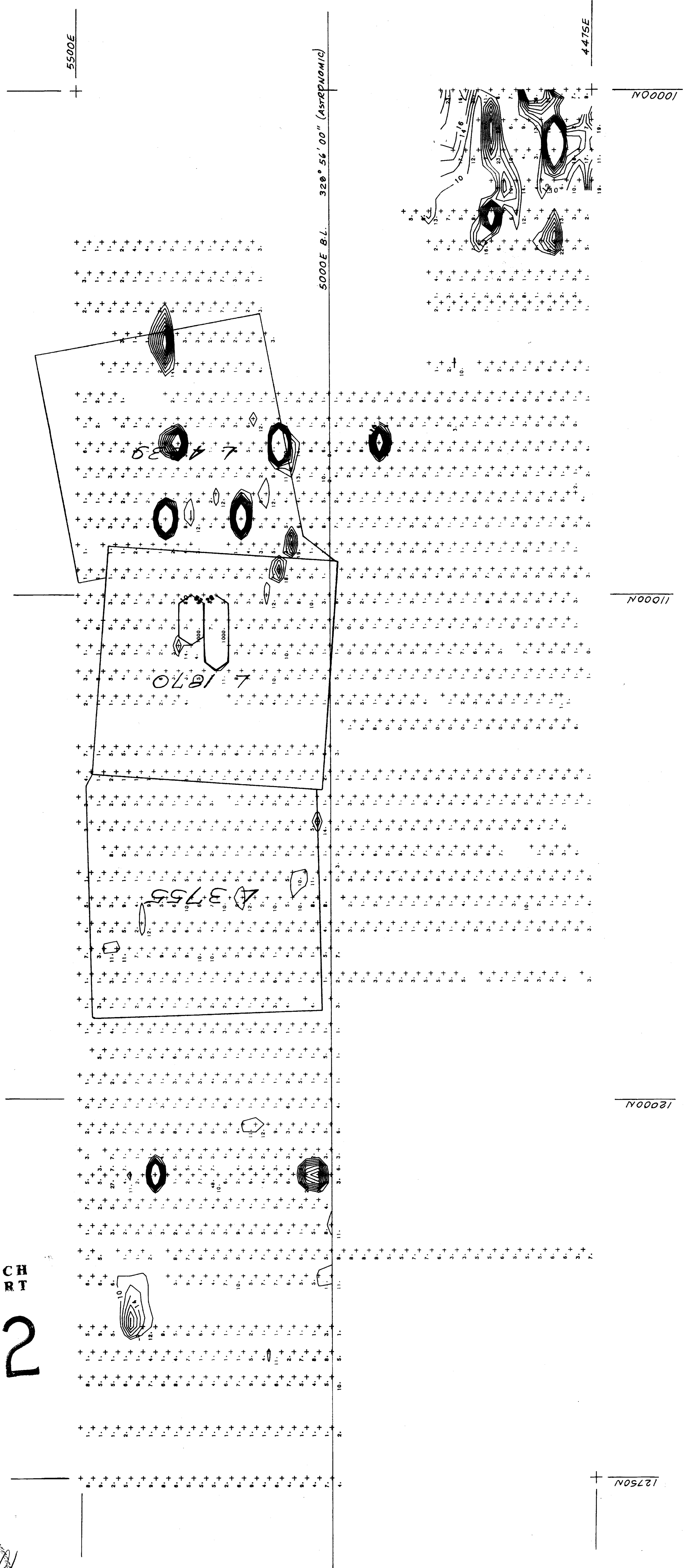
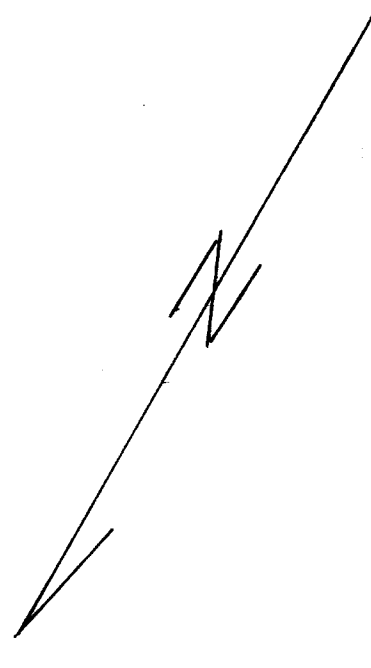
1200N

12750N

4475E

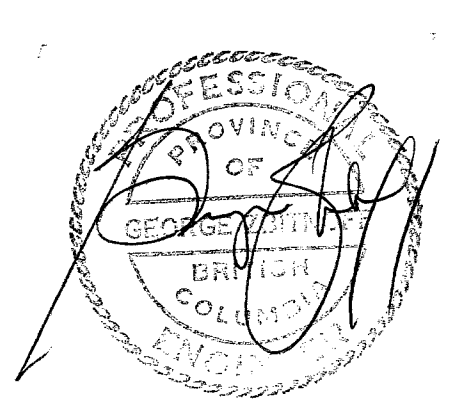
5000 E B L

320° 56' 00" (ASTRONOMIC)



GEOLOGICAL BRANCH
ASSESSMENT REPORT

16,582



WINDFLOWER ARSENIC GEOCHEM - BATCH 1 - 7/29/87

SCALE 1:5000

PPM

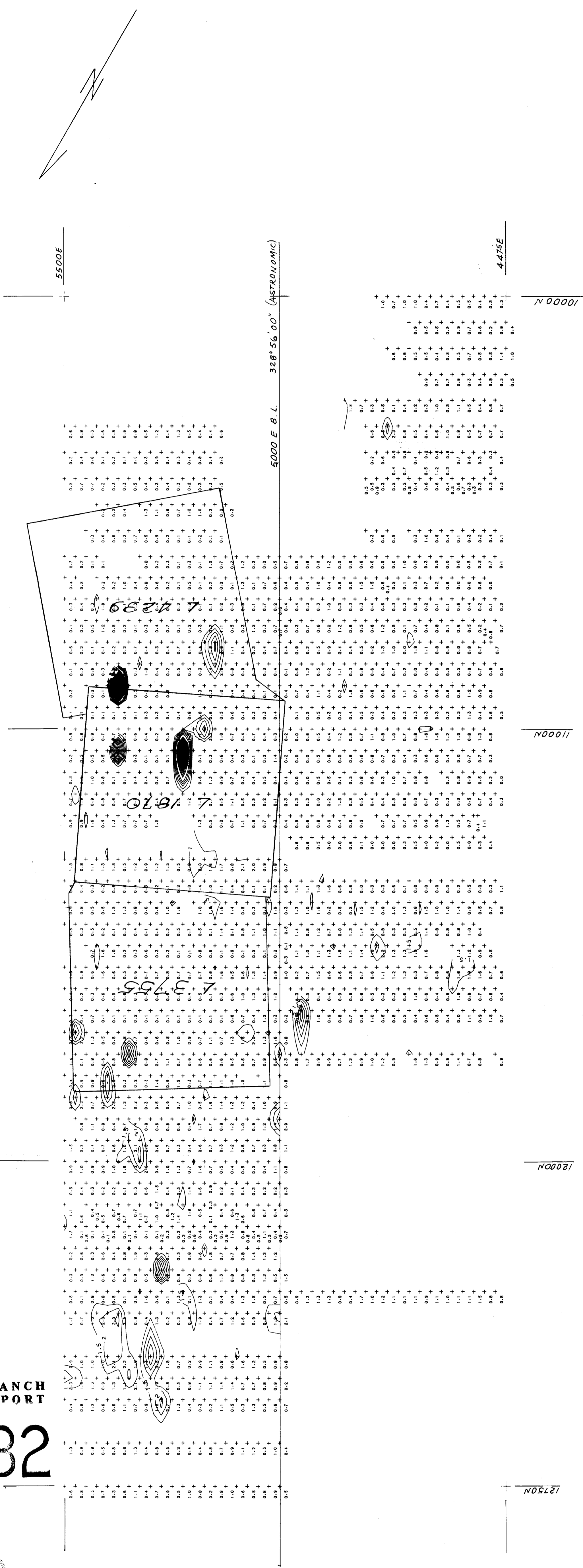
GEOLOGICAL BRANCH
ASSESSMENT REPORT

16,582



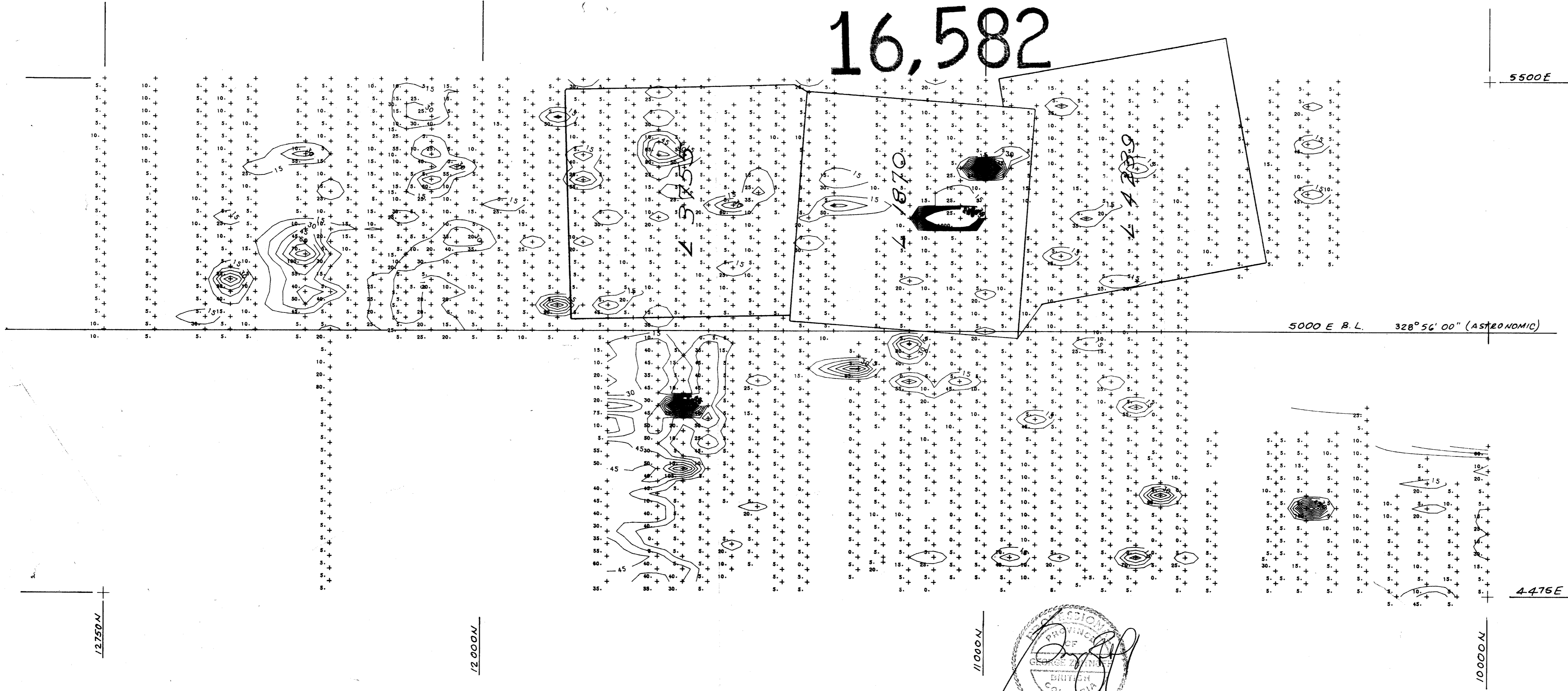
WINDFLOWER SILVER GEOCHEM - BATCH 1 7/29/87

SCALE 1:5000
PPM



GEOLOGICAL BRANCH
ASSESSMENT REPORT

16,582



WINDFLOWER GOLD GEOCHEM - BATCH 1 7/29/87

SCALE 1:5000
ppb

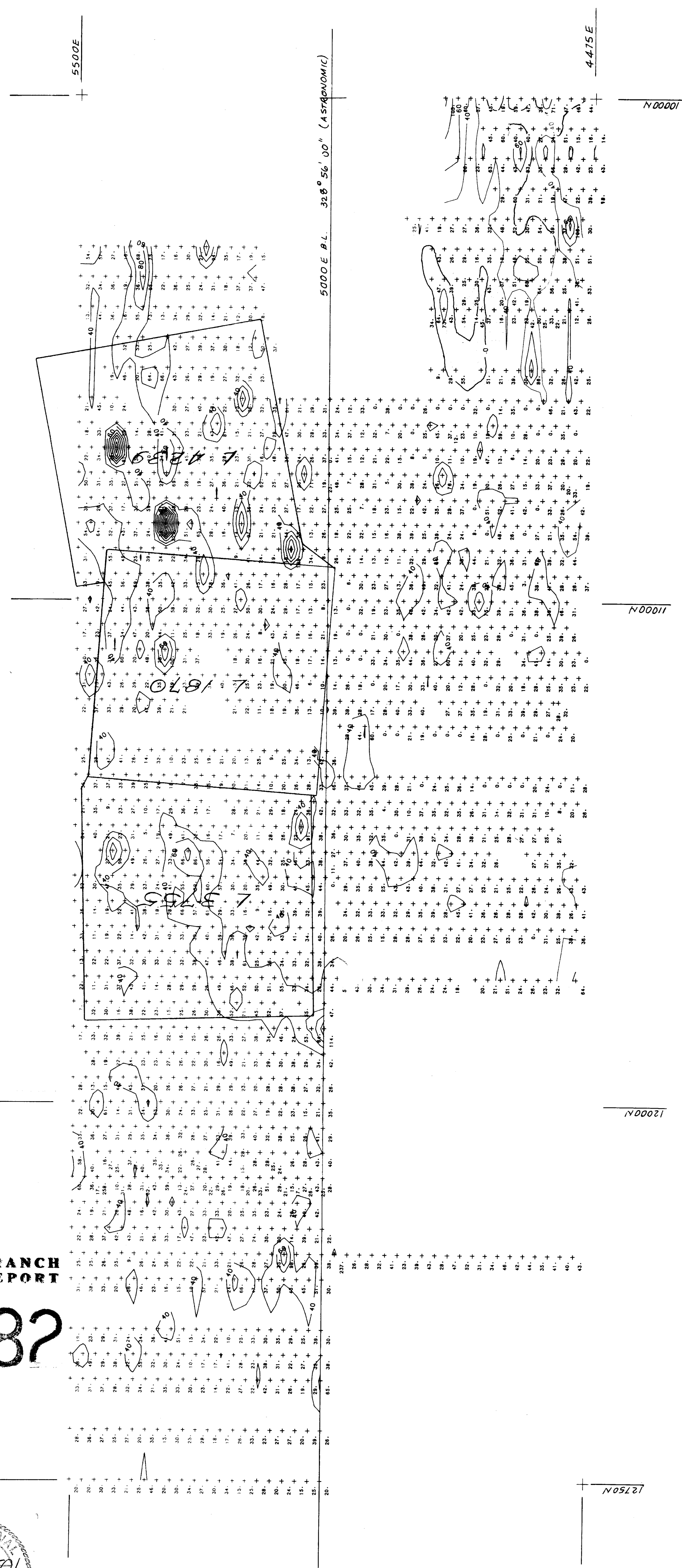
GEOLOGICAL BRANCH
ASSESSMENT REPORT

16,582



WINDFLOWER COPPER GEOCHEM - BATCH 1 7/29/87

SCALE 1:5000
PPM



N 00001

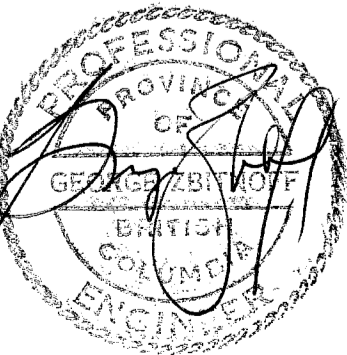
N 00011

N 00021

N 00031

GEOLOGICAL BRANCH
ASSESSMENT REPORT

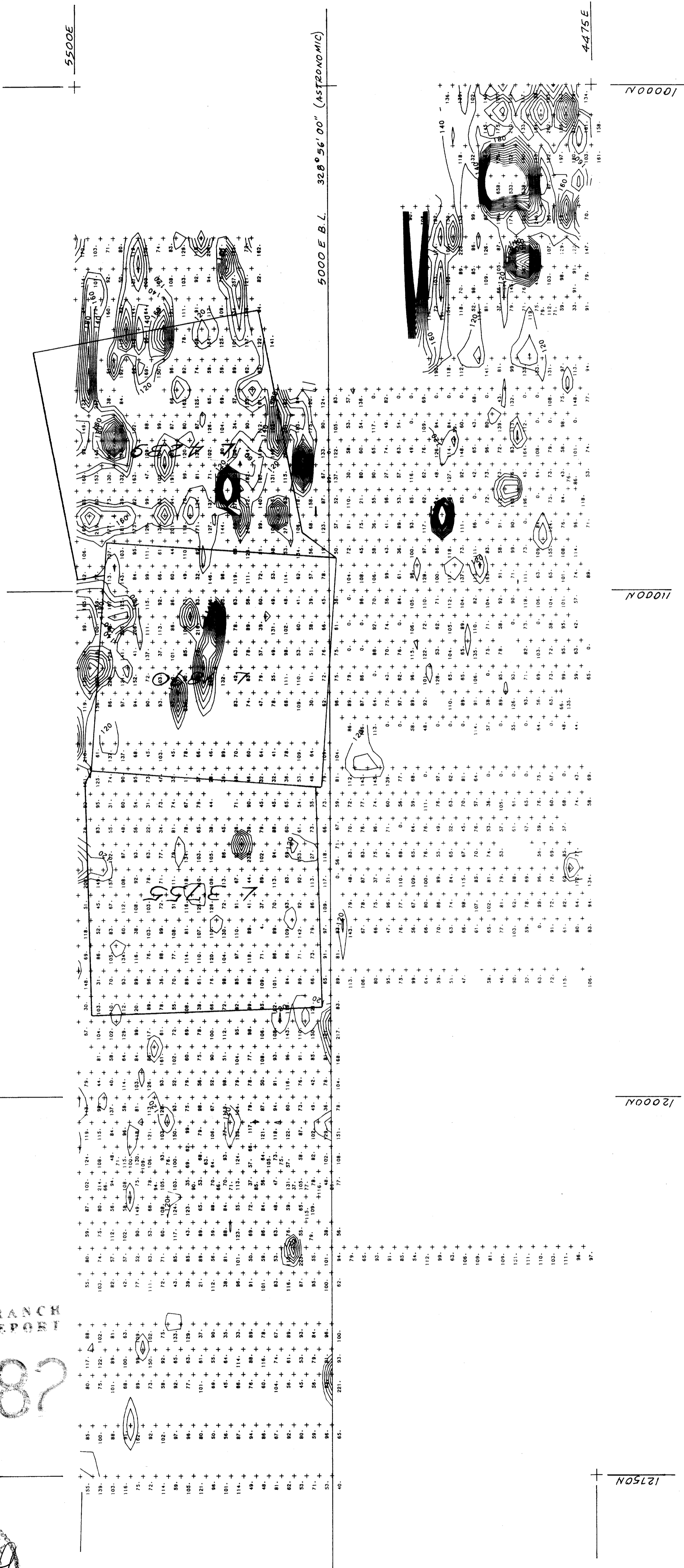
16,582



WINDFLOWER ZINC GEOCHEM - BATCH 1 7/29/87

SCALE 1:5000

PPM

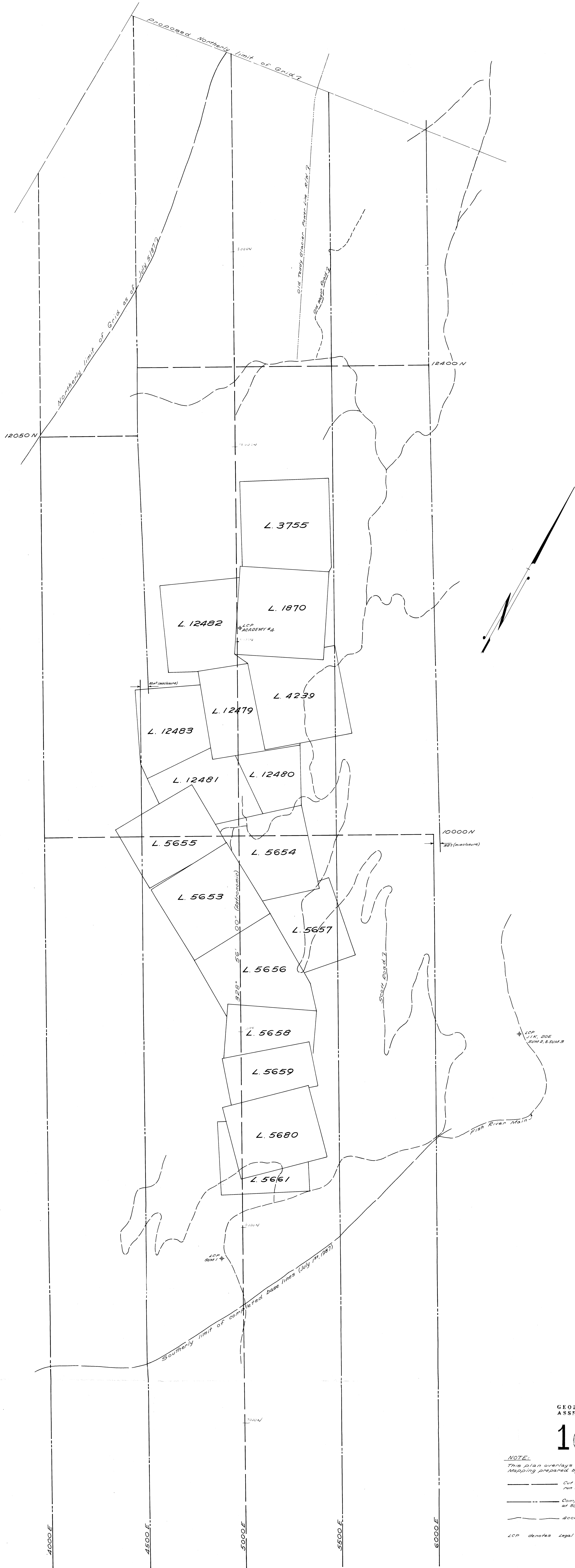


1000N

1000N

1000N

1275N



GEOLOGICAL BRANCH
ASSESSMENT REPORT

16,582

NOTE:
This plan overlays 1/5000 scale Orthophoto
mapping prepared by TRIATHLON MAPPING CORP.

- Cut line, staked at 50 m intervals, run with transit & EDM
- Compass and chain lines staked at 50 m intervals
- Access Roads
- LCP denotes Legal Corner Post

