

LOG NO: 1215 RD.  
ACTION:  
FILE NO: 87-888-16627

9/88

1987 ASSESSMENT REPORT  
GEOCHEMICAL SURVEY  
OF THE  
BIMBO CLAIMS  
VANCOUVER MINING DIVISION

NTS 92614W      LATITUDE 123° 28' 27"20"      LONGITUDE 49° 57' 56"49"

FILMED

FOR

*Operator:* TENQUILLE RESOURCES LTD.  
801 - 700 WEST PENDER STREET  
VANCOUVER, B.C. V6C 168

*Owner:* H. Ross

BY

JOHN E. ROBINS  
COOKE GEOLOGICAL CONSULTANTS LTD.  
107 - 325 HOWE STREET  
VANCOUVER, B.C. V6C 1Z7

SEPTEMBER 28, 1987

16,627

GEOLOGICAL BRANCH  
ASSESSMENT REPORT

## CONTENTS

	Page
INTRODUCTION	
Location & Access .....	1
Physiography & Vegetation .....	1
History .....	2
GEOLOGY .....	2
GEOCHEMISTRY .....	2
SUMMARY & RECOMMENDATIONS .....	3
STATEMENT OF QUALIFICATIONS .....	4
REFERENCES .....	5

LIST OF FIGURES

- FIGURE 1      LOCATION MAP  
FIGURE 2      CLAIM MAP  
FIGURE 3      REGIONAL GEOLOGY  
FIGURE 4      GEOCHEMISTRY

APPENDICES

- APPENDIX    I      I.C.P. & A.A. ANALYTICAL PROCEDURES  
APPENDIX    II     GEOCHEMICAL DATA  
APPENDIX    III    STATEMENT OF COSTS

## INTRODUCTION

During August of 1987 Cooke Geological Consultants Ltd., on behalf of Tenquille Resources Ltd., completed a geochemical survey over a portion of the Bimbo mineral claims near Squamish, B.C.

This report is based on the results of this survey and upon observations made.

## PROPERTY, LOCATION AND ACCESS

The property consists of one, 18 unit, mineral claim owned by Howard Ross of Vancouver, British Columbia.

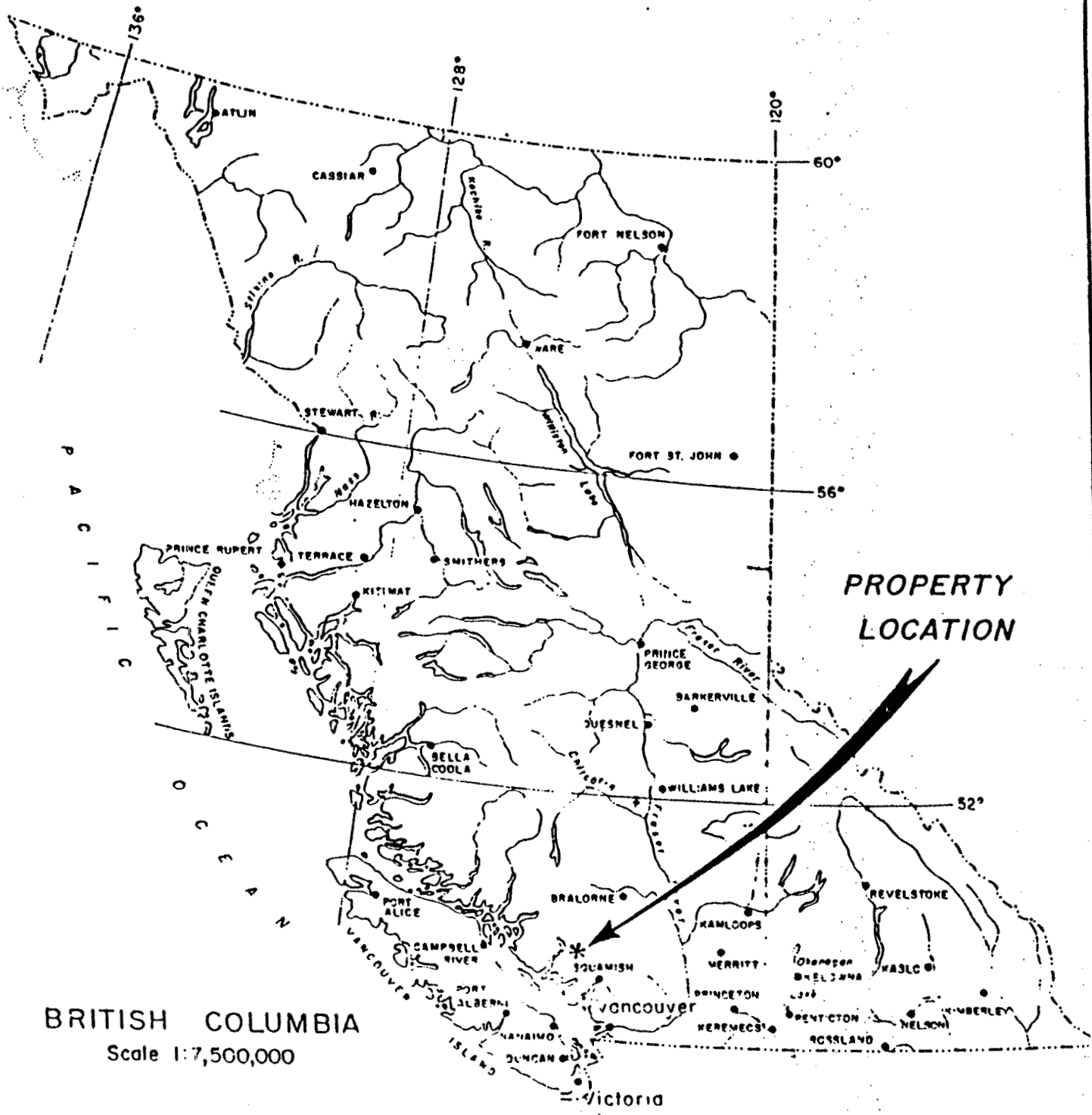
<u>Claim Name</u>	<u>Units</u>	<u>Record No.</u>	<u>Expiry Date</u>
Bimbo	18	1968 (8)	Aug. 20/88

The Bimbo mineral claim is situated approximately 45 kilometres northwest of Squamish, British Columbia on the South side of the Ashlu River. Geodetic coordinates are 49°57'N and 123°28'W.

Two wheel drive access is provided by a well maintained paved and gravel logging road which exits from Highway 99 a few kilometres north of Squamish.

## PHYSIOGRAPHY AND VEGETATION

The proeprty is located in the rugged Coast Range Mountains in an area of high relief and dense vegetation. Numerous steep cliffs and ravines restrict access around the claims.



BRITISH COLUMBIA  
Scale 1:7,500,000



TENQUILLE RESOURCES LTD.			
<i>Bimbo</i>		PROPERTY	
<b>LOCATION MAP</b>			
WORK BY	DRAWN D. J. B.	DATE NOV. 1985	FIGURE  1
Revised	_____	N.T.S. 92 G / 14	

M92G/14W

IRMA-3 C  
787(10)  
(48 X 58)

ALSON  
1347(2)    ALSON  
1346(2)

Red Mountain Cr.  
SNOW  
1352(3)  
(48 X 6W)

ICE  
141 (1)

ASHLO 1  
1954 (7)  
32 X 4E

Tallow Cr.

ELDORADO  
3  
1865 (10)  
66 X 4W

~~BIMBO~~  
1968 (8)  
68 X 3W

ICE 1  
150 (2)  
Pyke Cr.

ICE 2  
151 (2)

SILVERTON  
127 (10)  
(88 X 5)

MAIBI  
1912 (2)  
38 X 4E

HAWK 6  
1741 (11)  
38 X 4W

HAWK 2  
1543 (8)  
38 X 4H

HAWK 5  
1700 (9)  
58 X 4E

5

GEE-WHIZ  
1969 (8)  
68 X 3W

HAWK 7  
1758 (2)  
45.5W

HAWK 1  
1542 (8)  
25 X 3E

HAWK 6  
1764 (2)  
(14 X 8E)

HAWK 4  
1579 (10)  
48 X 3E

ELDORADO  
1835 (7)  
45 X 5W

HAWK 3  
1578 (10)  
48 X 3W

FLORETTE  
1834 (7)  
25 X 5E

MT. JIMMY JIMMY

4

Clowhom R.

SKY 2  
1516 (7)  
48 X 3W  
(71 10E)

SKY 5 C  
1540 (8)  
48 X 3E

FIGURE 2

Sigurd L.

SKY 4  
1539 (8)  
48 X 4E

SKY 1  
1515 (7)

EE MAP 92 G/13E



## HISTORY

The Bimbo claim was staked on July 20, 1986 and adjoins the Hawk claim group to the west. The first claims in the immediate area were staked in 1923 by Fred Pykett and Associates after prospecting in the area for several seasons. The claims were located over a well mineralized gold quartz vein in the canyon of Roaring Creek near its confluence with the Ashlu River.

From 1925 to 1939 the claims were explored and developed by a number of mining syndicates with production of approximately 15,000 ton averaging 0.43 oz. au/ton, 0.48 oz/ton silver and 0.22% copper. In 1939 the mine was closed after 5 levels had been developed and mined. The adjoining property lay dormant from 1939 to 1972 when it was restaked by W. Babkirk and several mining companies including Ashlu Gold Mines, Osprey Mining Co. and, most recently, Tenquille Resources Ltd. have attempted to bring the project back into production. The Bimbo claim was then staked July 20, 1986 by Howard Ross and is now operated by Tenquille Resources Ltd.

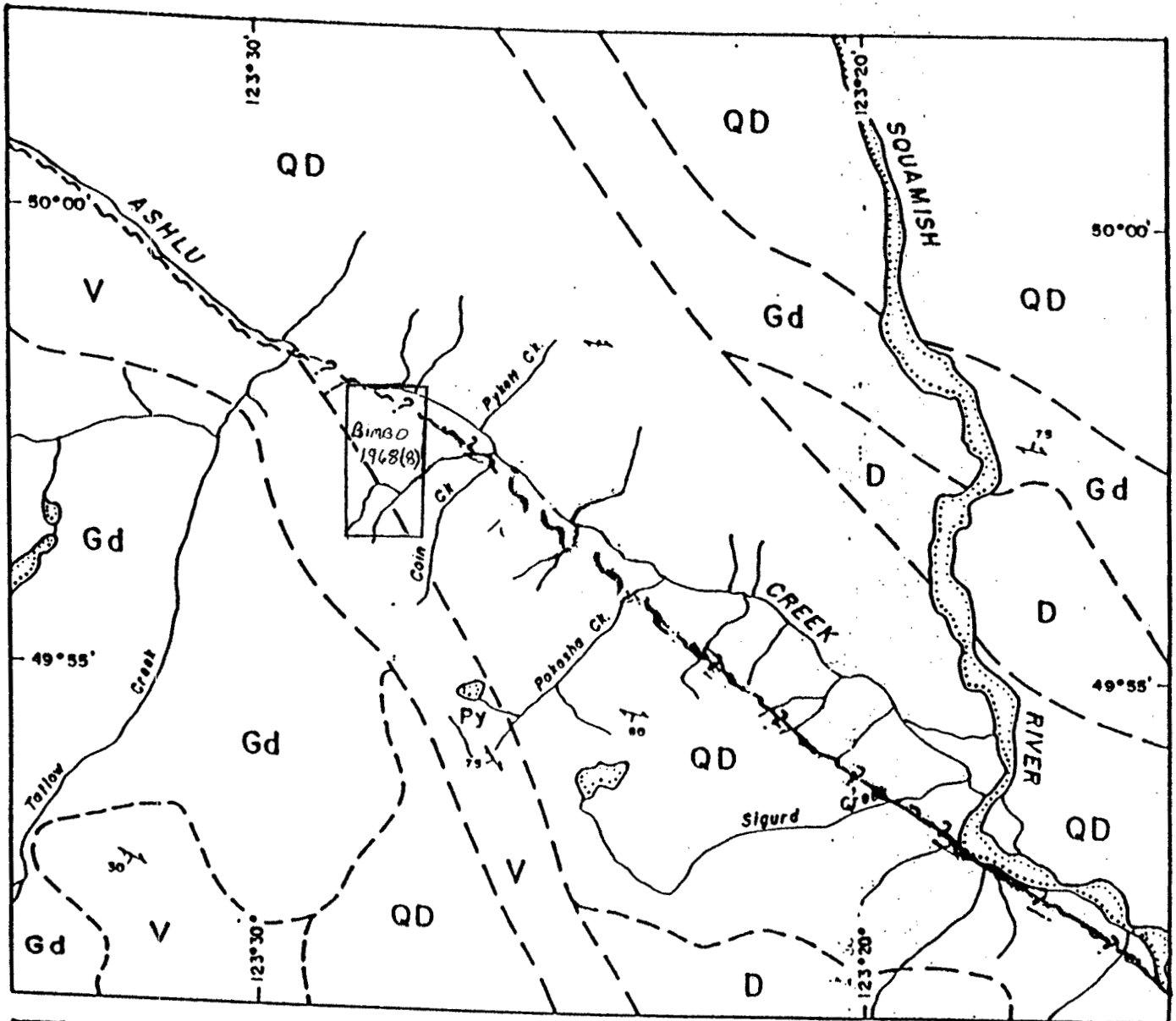
## GEOLOGY

The Bimbo claims are situated within the coast crystalline belt of plutonic and metamorphic rocks. Cretaceous mafic meta-volcanics of the Gambier Group are intruded by cretaceous felsic plutons of the coastal intrusives. Mineralization is generally thought to be associated with the contact of the intrusives with the volcanic roof pendants. The area is faulted by northwest trending structures and to a lesser extent northeast striking shears. Regional geology is illustrated in Figure 3.

## GEOCHEMICAL SURVEY

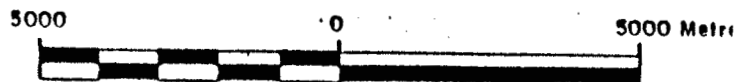
*"B" horizon (~15cm depth) where available  
or talus fines*

In August of 1987 a soil sample survey was conducted on the south east side of the 18 unit Bimbo Claim. Some 82 soils were collected along contour intervals and road cuts at 25 m spacings. The samples were analyzed by Min-En Labs of North Vancouver (See Appendix I) for 6 element ICP including Ag, As, Cu, Pb, Sb, and Zn. Gold was also analyzed by geochem techniques. Results of the survey are included as Appendix II, and Plotted on Figure #4.



- D** ... Diorite, minor gabbro
- Gd** ... Granodiorite
- QD** ... Quartz diorite
- V** ... Gambler Gp. andesite, rhyodacite flows, pyroclastics; greenstone, argillite
- ... Inferred geologic contact
- ~~~~~ ... Inferred fault
- ┌┐ ... Bedding, foliation; strike, dip
- Py ... Pyrite showing
- ▲ Ashlu creek gold - tungsten deposit

SCALE 1:125000



TENQUILLE RESOURCES LTD.

PROPERTY

REGIONAL GEOLOGY

WORK BY	DRAWN D. J. B.	DATE NOV. 1985	FIGURE
Revised		N.T.S. 92 6 / 14	3



Of the eighty-two samples taken, one sample gave very interesting anomalies in Cu, Zn and Ag and had a coincident gold anomaly only 50m away. Samples B250N to B325N had indicators of up to 90 ppb Au, 1.8 ppm Ag, 813 ppm Cu and 390 ppm Zn. The samples were taken along a road cut and should be very easy to follow-up.

Only two other samples returned low gold anomalies of 30 ppb. They were B525N 20m and B150E no anomalous areas in Ag, Pb or Sb were indicated by the results.

#### SUMMARY & RECOMMENDATIONS

The Bimbo claims, situated within the cretaceous coast crystalline complex of southwestern British Columbia, is now being operated by Tenquille Resources Ltd. The eighteen unit claim block does hold potential for gold-silver, copper-zinc mineralization.

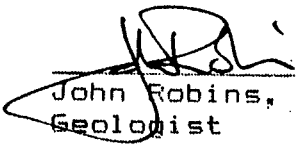
Initial soil sampling indicates a good target for follow-up soil sampling and trenching. The area between samples B250N and B325N should be trenched as gold values up to 90 ppb were indicated with coincident Ag, Cu, and Zinc anomalies.

The success of this small sampling program indicates that the entire claim should be further tested with direct attention paid to this anomalous area.

## STATEMENT OF QUALIFICATIONS

I, John Robins, of Chase, British Columbia do hereby certify:

- That I am a graduate of the University of British Columbia (1984) and hold a B.Sc. in Geological Sciences.
- That I have worked in mineral exploration for the past seven years.
- That I am a member of the American Insititue of Mining Engineers and an associate Member of the Geological Association of Canada.
- That the information for this report was obtained through a literature review and by field work conducted by the author during August of 1987.

  
John Robins, B.Sc.  
Geologist

September, 1987.

REFERENCES

Bullis, A.R. 1980, Osprey Mining & Exploration Ltd. Squamish, British Columbia.

Cooke, Robins, Barratt

1987, Evaluation Report of Underground work in Ashlu Mine near Squamish, British Columbia.

Chapman, D.A. 1985, Hawk 1 & 2 Claims, Ashlu Creek, News Releases, Assays.

APPENDIX I

## *MIN-EN Laboratories Ltd.*

*Specialists in Mineral Environments*

Corner 15th Street and Bewicke  
705 WEST 15TH STREET  
NORTH VANCOUVER, B.C.  
CANADA V7M 1T2

### FIRE GOLD GEOCHEMICAL ANALYSIS BY MIN-EN LABORATORIES LTD.

Geochemical samples for Fire Gold processed by Min-En Laboratories Ltd., at 705 W. 15th St., North Vancouver Laboratory employing the following procedures.

After drying the samples at 95°C soil and stream sediment samples are screened by 80 mesh sieve to obtain the minus 80 mesh fraction for analysis. The rock samples are crushed and pulverized by ceramic plated pulverizer.

A suitable sample weight 15.00 or 30.00 grams are fire assay preconcentrated.

After pretreatments the samples are digested with Aqua Regia solution, and after digestion the samples are taken up with 25% HCl to suitable volume.

Further oxidation and treatment of at least 75% of the original sample solutions are made suitable for extraction of gold with Methyl Iso-Butyl Ketone.

With a set of suitable standard solution gold is analysed by Atomic Absorption instruments. The obtained detection limit is 1 ppb.

APPENDIX II

PROJECT NO: TR87AS

705 WE' 3TH ST., NORTH VANCOUVER, B.C. V7M 1T2

FILE NO: 7-11455/F1+2

ATTENTION: BRAD COOKE

(604)980-5814 OR (604)988-4524

\* TYPE: L GEOCHEM \* DATE: SEPT 4, 1987

(VALUES IN PPM)	AG	AS	CU	PB	SB	ZN	AU-PPB
B. 00E	.4	10	17	12	2	55	10
B. 25E	.8	24	25	11	6	51	5
B. 50E	.7	7	27	15	5	84	5
B. 75E	.7	11	30	11	8	75	10
B. 100E	.7	12	21	8	5	20	5
B. 125E	.9	2	28	4	7	60	5
B. 150E	1.0	3	17	6	7	37	30
B. 175E	1.2	3	28	7	6	84	5
B. 200E	.7	16	30	5	5	54	10
B. 225E	1.2	3	15	14	8	34	5
B. 250E	1.1	24	22	11	8	34	10
B. 275E	1.5	8	20	7	10	47	5
B. 300E	1.5	5	14	11	7	30	5
B. 325E	1.6	17	13	12	3	37	5
B. 350E	.5	3	31	5	7	42	15
B. 375E	.8	16	26	6	6	62	5
B. 400E	.8	1	8	4	3	22	10
B. 00N 40M	.3	39	21	17	21	4	5
B. 25N 20M	.9	12	18	12	5	50	5
B. 50N	.8	19	20	4	6	54	5
B. 75N	1.2	14	16	6	6	33	20
B. 100N	.9	2	9	10	5	24	5
B. 125N	.8	3	8	13	4	21	5
B. 150N 20M	.5	19	5	10	3	14	5
B. 175N	.9	6	9	7	4	19	10
B. 200N	.6	4	29	9	5	50	5
B. 225N	.9	9	22	12	9	61	5
B. 250N	.7	10	21	3	6	40	90
B. 275N	1.1	7	4	22	5	23	5
B. 300N 20M	1.8	6	813	6	8	266	5
B. 325N	.8	14	89	13	3	390	5
B. 350N 20M	.2	6	13	7	1	27	5
B. 375N	.6	19	15	4	4	67	20
B. 400N 20M	.7	1	13	3	4	15	5
B. 425N 20M	.7	1	12	4	3	15	5
B. 450N	1.4	5	5	20	5	9	10
B. 475N	.7	1	6	16	2	12	5
B. 500N	1.1	3	4	13	4	10	5
B. 525N 20M	.6	12	3	12	2	8	30
B. 550N 20M	.8	20	4	18	4	17	5
B. 575N	1.2	10	3	11	4	5	5
B. 625N 20M	1.7	19	7	39	5	34	5
B. 650N	1.0	11	18	6	5	11	10
B. 675N	.6	22	22	9	10	36	10
B. 700N 40M	1.5	3	7	14	6	21	5
LOWER RD. B. 00W	.6	17	16	11	9	32	5
LOWER RD. B. 25W	.5	12	11	9	4	35	5
LOWERRD. B. 50W40M	.6	16	14	8	5	29	5
LOWER RD. B. 75W	.3	8	15	8	3	44	10
LOWERRD. B. 100W40	.4	9	14	6	5	32	5
LOWER RD. B. 125	.4	24	20	7	5	59	5
LOWER RD. B. 150	.9	7	12	6	3	40	5
LOWER RD. B. 175	.8	22	19	16	9	27	5
LOWER RD. B. 200	1.0	27	14	6	5	28	5
LOWER RD. B. 225	1.2	8	19	4	4	57	5
LOWER RD. B. 250	.7	10	15	5	1	38	10
LOWER RD. B. 275	1.6	14	15	14	3	45	5
LOWER RD. B. 300	1.2	14	9	7	4	58	5
LOWER RD. B. 325	.7	4	12	7	3	34	5
LOWER RD. B. 350	.6	7	12	5	6	49	5

TOTAL OF

82 SAMPLES ON

DIM30 CLAIM

RECEIVED  
SEP - 8 1987

B

B

187A9

705 WE'

5TH ST., NORTH VANCOUVER, B.C. V7M 1T2

FILE NO: 7-11455/P3+4

BRAD COOKE

(604)980-5814 OR (604)988-4524

\* TYPE GEOCHEM \* DATE: SEPT 4, 1987

VALUES IN PPM )	AG	AS	CU	PB	SB	ZN	AU-PPB
LOWER RD. B. 375	1.1	1	11	8	3	45	5
LOWER RD. B. 400	.7	6	17	11	3	66	5
200 CON B. 25W	1.7	10	6	9	3	21	10
200 CON B. 50W20M	.4	17	6	17	3	16	5
200 CON B. 75W40M	.9	2	6	10	3	20	10
200 CON B. 100W	1.3	1	10	13	2	56	5
200 CON B. 125W	.8	8	3	3	2	14	5
200CON B. 150W40M	.8	3	3	10	3	12	5
200CON B. 175W40M	.5	13	6	24	2	30	15
200 CON B. 200W	.9	35	10	26	23	21	5
200 CON B. 225W	.7	1	3	13	4	11	10
200CON B. 250W20M	.3	12	6	26	3	16	5
200CON B. 275W20M	.8	15	9	15	4	30	5
200CON B. 300W20M	.4	14	8	20	3	35	5
200CON B. 325W20M	.8	17	7	23	4	30	10
200CON B. 350W40M	.7	21	5	10	6	23	15
200 CON B. 375W	1.0	9	5	11	6	24	5
200CON B. 400W20M	.5	17	5	22	3	25	5
200 CON B. 425W	.8	1	8	13	4	17	5
200 CON B. 450W	1.2	5	6	14	6	27	10
200 CON B. 475W	1.6	4	14	13	4	30	5
200 CON B. 500W	1.1	11	24	12	4	49	5
LOOE 000S	1.1	17	40	19	7	84	5
LOOE 025S	.3	5	7	14	3	30	5
LOOE 050S	.3	1	4	5	4	7	25
LOOE 075S	1.5	20	23	16	4	51	5
LOOE 100S	1.0	9	14	23	5	62	10
LOOE 125S	1.0	10	9	10	4	47	5
LOOE 150S	1.0	3	7	16	5	20	5
LOOE 175S	.7	13	2	14	3	5	15
LOOE 200S	.5	3	5	18	3	25	5
LOOE 225S	1.0	7	10	7	3	31	5
LOOE 250S	1.0	3	5	16	3	12	10
LOOE 275S	.7	2	4	14	5	17	5
LOOE 300S	.5	1	4	11	3	13	5
LOOE 325S	.9	13	6	30	4	32	10
LOOE 350S 40M	.8	3	5	16	4	18	5
LOOE 375S	.8	12	4	28	6	19	5
LOOE 400S	1.3	1	6	38	5	32	15
LOOE 425S	1.1	5	6	34	4	27	5
LOOE 450S	1.4	8	4	22	4	31	5
LOOE 475S 40M	2.2	15	15	69	7	66	5
LOOE 500S	1.7	23	19	5	8	67	10
LOOE 525S	.6	2	7	13	3	19	5
LOOE 550S	1.8	24	18	36	7	104	5
200S 100E	1.8	7	12	17	6	43	5
200S 125E	1.4	3	11	16	6	32	5
200S 150E	1.4	3	19	11	6	59	10
200S 175E	1.7	1	13	20	5	32	5
200S 200E	.8	10	17	10	4	32	5
200S 225E 40M	1.1	18	22	5	6	25	5
200S 250E 40M	.4	13	7	16	2	14	5
200S 275E 40M	.4	15	5	8	3	28	30
200S 300E 20M	.5	19	10	59	5	33	5
125 'E' 125W	1.5	7	14	13	3	34	5
125 'E' 150W	1.4	21	41	6	6	60	5
125 'E' 175W	.7	2	12	14	3	20	10
125 'E' 200W	1.2	2	18	16	5	49	5
100 'E' 125W	.5	7	18	14	3	50	5
100 'E' 150W	.9	17	12	14	3	68	5

TOTAL 82 SAMPLES  
ON BIMBO CLAIM.

B.

6-W

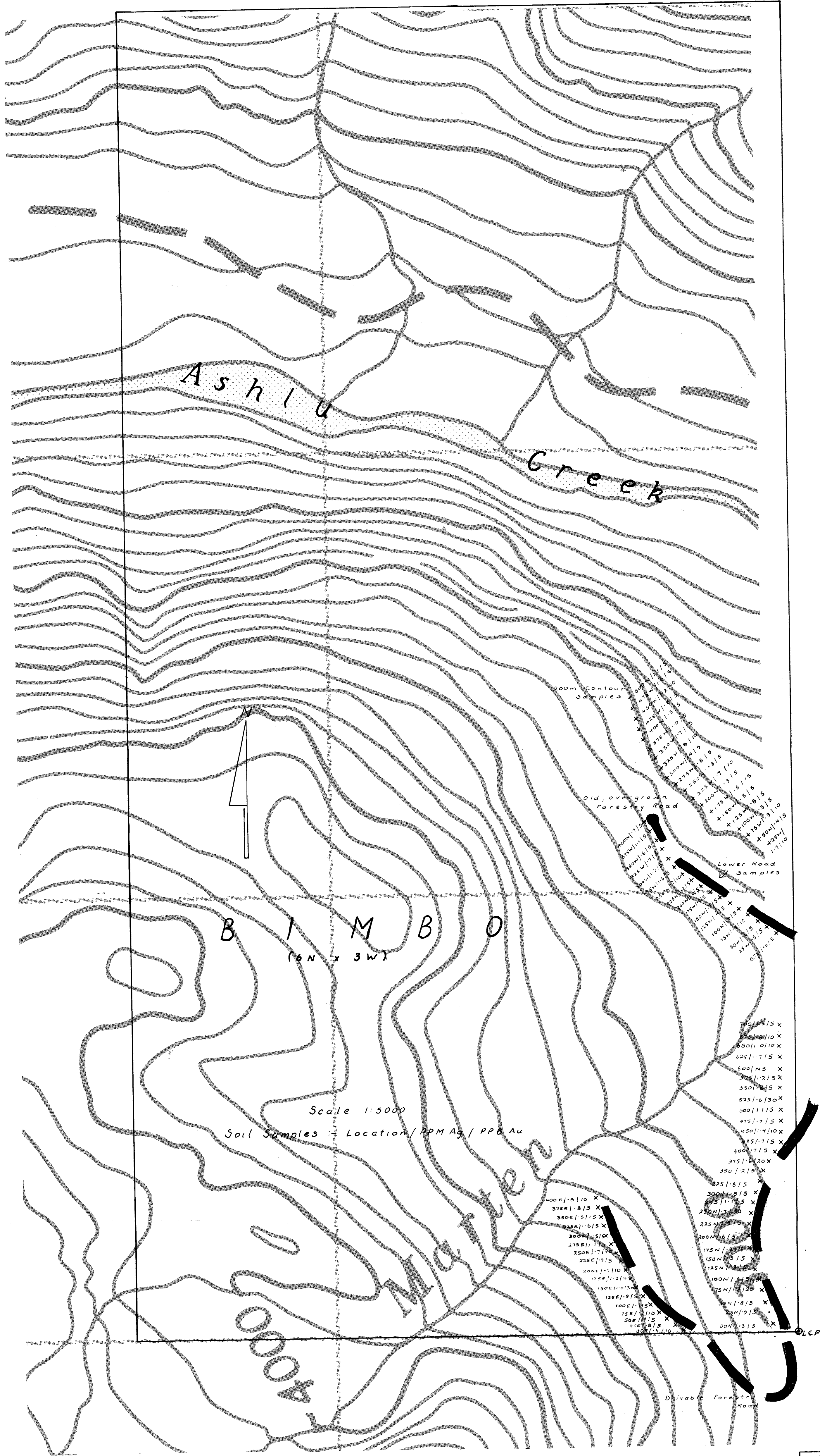
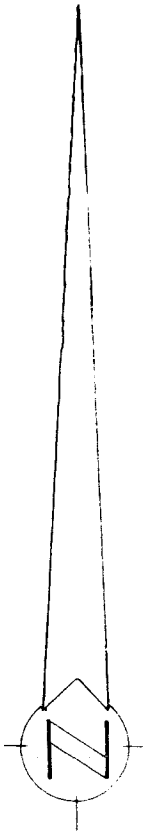
6-W



APPENDIX III

STATEMENT OF COSTS

Draughting & Report (3 1/4 Days x \$200.00)	\$ 650.00
Soil Sampling (2 Man Days X \$100.00)	200.00
Truck Rental (1 Day @ \$45.00)	45.00
Fuel (1 Day @ \$10.00)	10.00
Accomodation (2 Days @ \$50.00)	100.00
Assay Costs	<u>900.00</u>
	<u>\$1,905.00</u>



Soil Sample Data:  
 eg 100E/7/5 → Sample Identification/  
 Parts per Million Ag /  
 Parts per Billion Au.  
 Samples taken between 18<sup>th</sup> - 20<sup>th</sup>  
 August 1987

Scale 1:5000  
 Soil Samples Location / PPM Ag / PPB Au

**GEOLOGICAL BRANCH  
 ASSESSMENT REPORT**

**16,627**

TENQUILLE RESOURCES LTD  
 BIMBO PROPERTY  
 ASHLU CREEK AREA, VANCOUVER M.D.; B.C.

**Geochemical Survey**

Scale:	1:5000	N.T.S.
Date:	Plotted: P.A.B. Fig.	
Cooke Geological Consultants Ltd.		

