

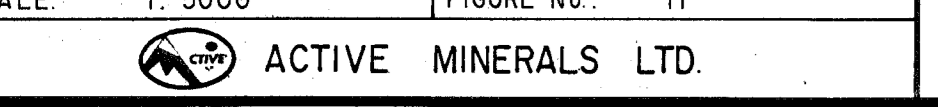
GEOLOGICAL BRANCH
ASSESSMENT REPORT

16,684
PART 2 OF 2
METRES
0 100 200

WINSLOW GOLD CORP
SNIPPAKER MOUNTAIN PROJECT
LIARD MINING DIVISION
ISKUT RIVER, B.C.

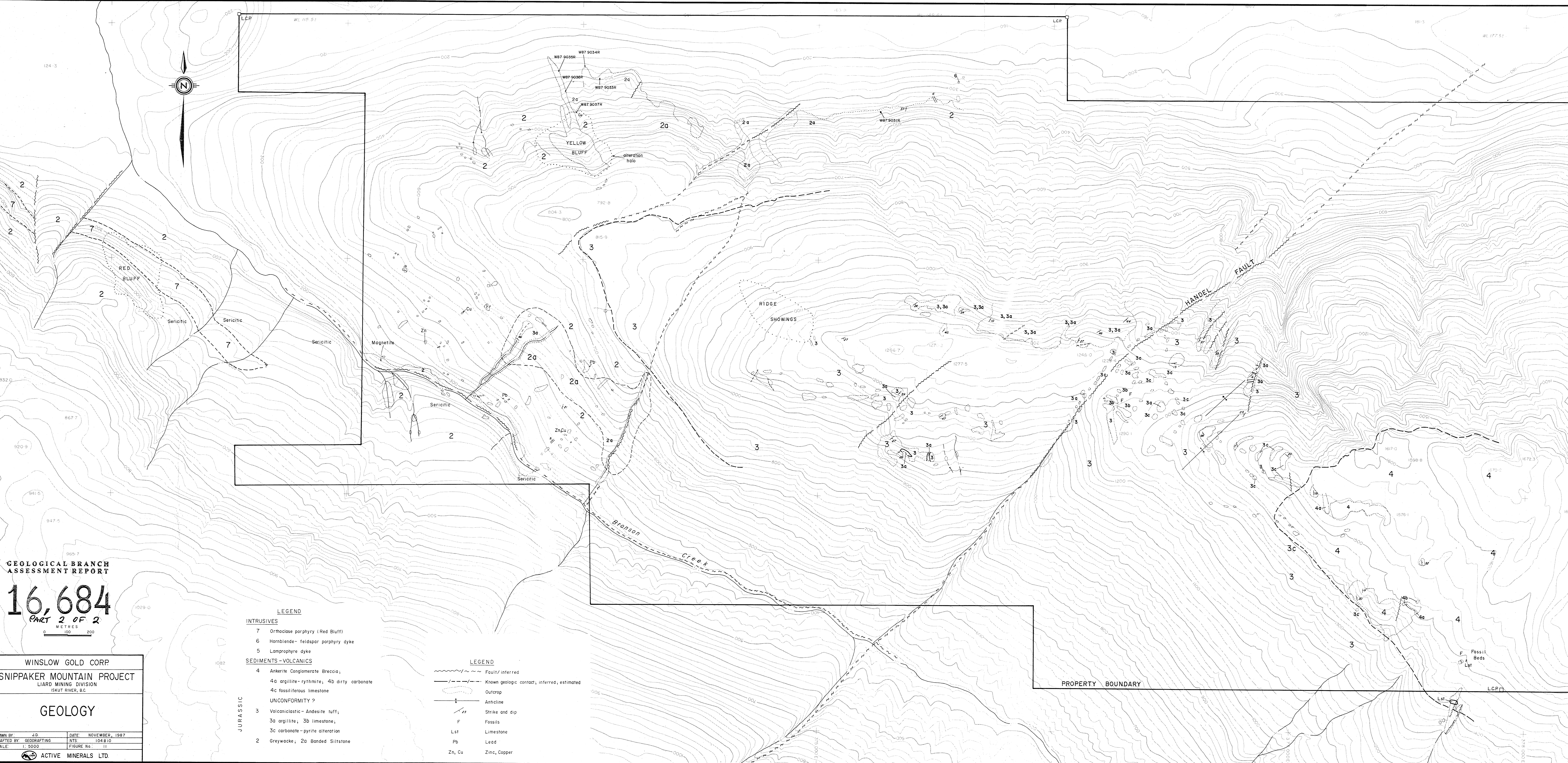
GEOLOGY

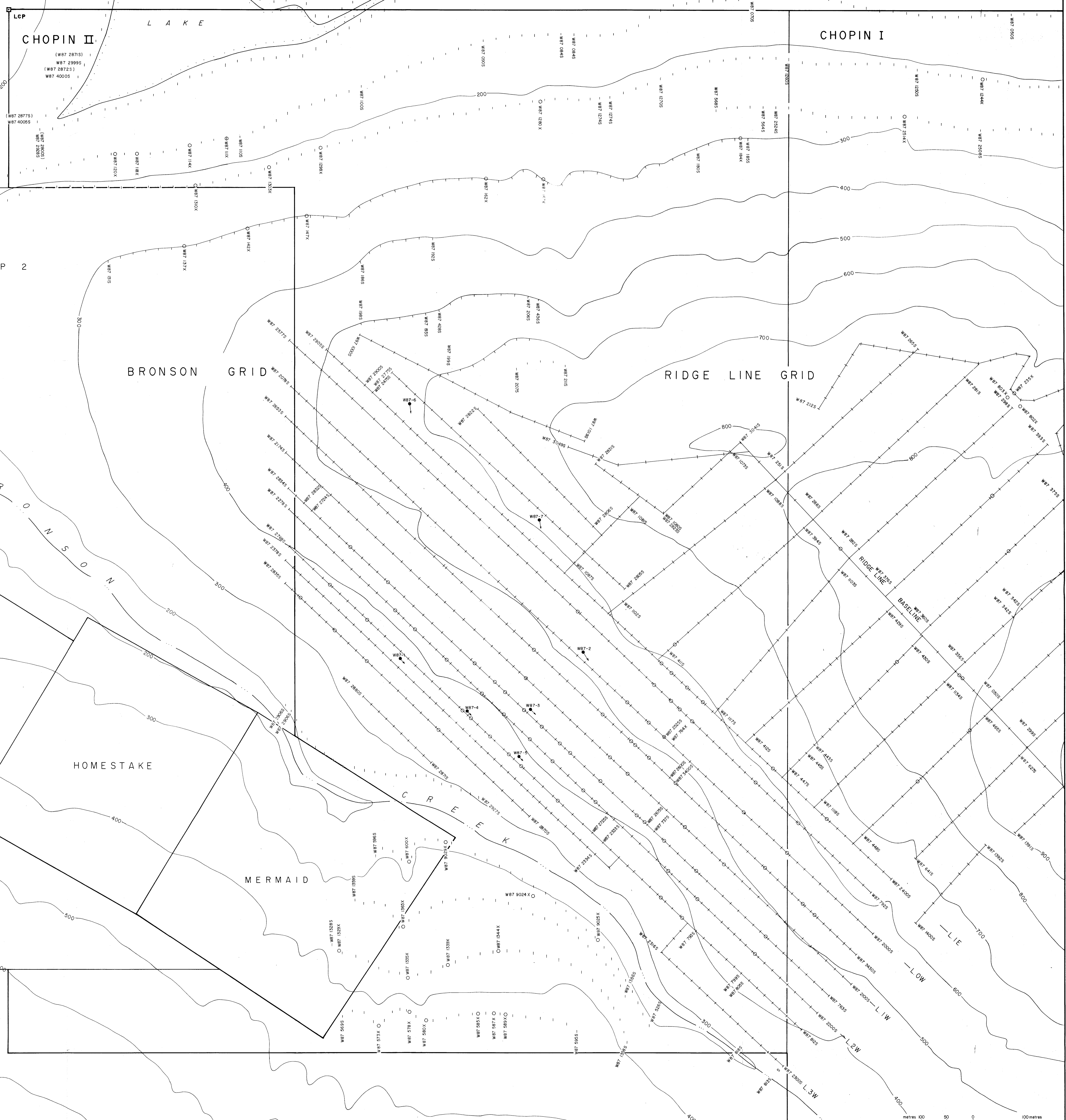
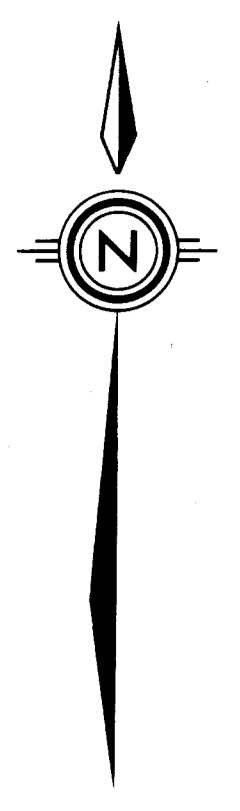
DRAWN BY: J.D. DATE: NOVEMBER, 1987
DRAFTED BY: GEOMAPPING NTS 104810
SCALE: 1:5000 FIGURE No. 11



- LEGEND**
- INTRUSIVES**
- 7 Orthoclase porphyry (Red Bluff)
 - 6 Hornblende- feldspar porphyry dyke
 - 5 Lamprophyre dyke
- SEDIMENTS-VOLCANICS**
- 4 Ankerite Conglomerate Breccia; 4a argillite-rytmite; 4b dirty carbonate; 4c fossiliferous limestone
- UNCONFORMITY ?**
- 3 Volcaniclastic- Andesite tuff; 3a argillite; 3b limestone; 3c carbonate-pyrite alteration
 - 2 Greywacke, 2a Banded Siltstone
- JURASSIC**

- LEGEND**
- Fault/interrred
 - - - - - Known geologic contact; interrred, estimated
 - Outcrop
 - ~ Anticline
 - ↗ Strike and dip
 - F Fossils
 - Lst Limestone
 - Pb Lead
 - Zn, Cu Zinc, Copper





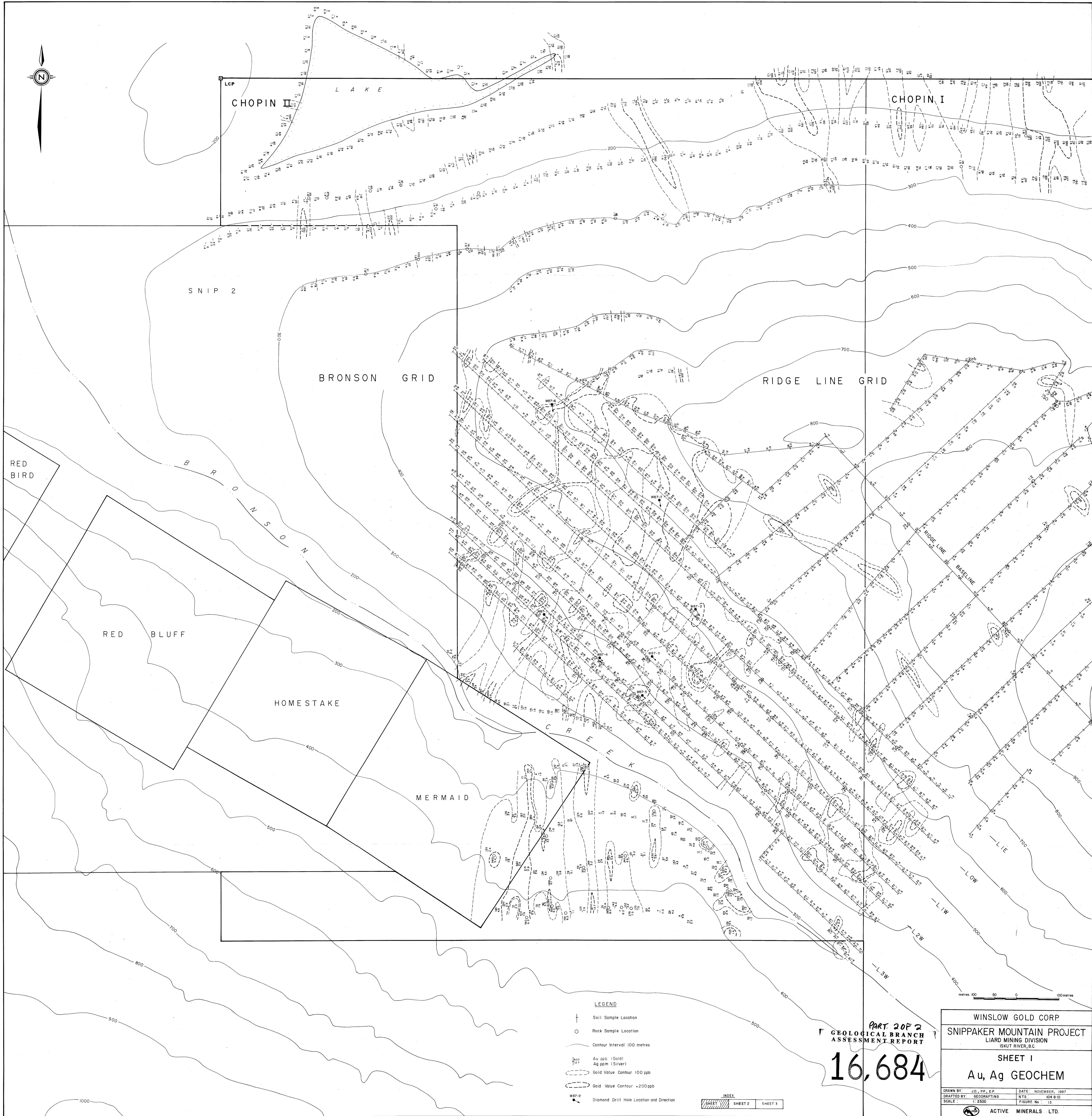
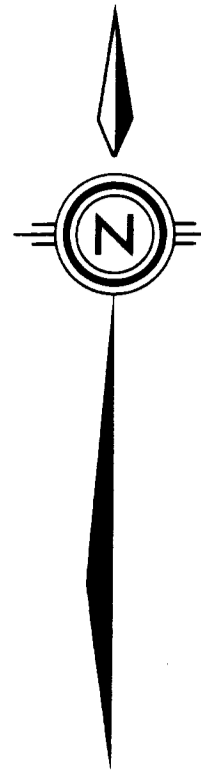
- LEGEND**
- † Soil Sample Location
 - Rock Sample Location
 - Contour Interval 100 metres
 - Diamond Drill Hole Location and Direction

INDEX

SHEET 1	SHEET 2	SHEET 3
---------	---------	---------

PART 2 OF 2
GEOLOGICAL BRANCH
ASSESSMENT REPORT
16,684

WINSLOW GOLD CORP.	
SNIPPAKER MOUNTAIN PROJECT	
LIARD MINING DIVISION	
ISKUT RIVER, B.C.	
SHEET 1	
GEOCHEM	
SAMPLE LOCATION	
DRAWN BY: J.D. EP	DATE: NOVEMBER, 1987
DRAFTED BY: GEODRAFTING	NTS: 104 B/D
SCALE: 1:2500	FIGURE No: 12
ACTIVE MINERALS LTD.	



LEGEND

- † Soil Sample Location
- Rock Sample Location
- Contour Interval 100 metres
- 1000 Au ppm (Gold)
- 750 Ag ppm (Silver)
- Gold Value Contour 100 ppp
- Gold Value Contour >200 ppp
- W87-2 Diamond Drill Hole Location and Direction

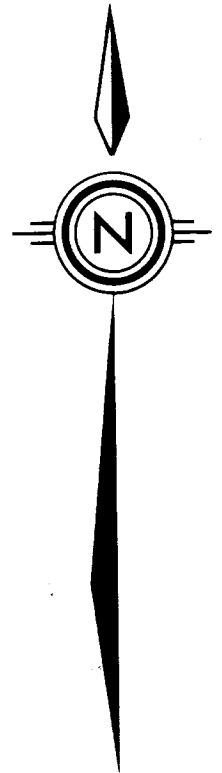
INDEX	
	SHEET 2
	SHEET 3

PART 2 OF 2
GEOLOGICAL BRANCH
ASSESSMENT REPORT

16,684

WINSLOW GOLD CORP.	
SNIPPAKER MOUNTAIN PROJECT	
LIARD MINING DIVISION	
ISKUT RIVER, B.C.	
SHEET 1	
Au, Ag GEOCHEM	
DRAWN BY: J.D., P.P., E.P.	DATE: NOVEMBER, 1987
DRAFTED BY: GEO-DRAFTING	NTS: 04 B10
SCALE: 1" = 2500'	FIGURE No: 13
ACTIVE MINERALS LTD.	

L A K E



CHOPIN I

HANDEL

HANDEL

GRID

RIDGE LINE GRID

PART 2 OF 2
GEOLOGICAL BRANCH
ASSESSMENT REPORT

16,684

metres 100 50 0 100 metres

LEGEND

- † Soil Sample Location
- Rock Sample Location
- Contour Interval 100 metres

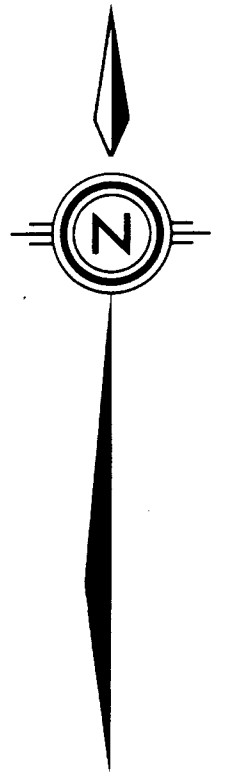
INDEX
SHEET 1 SHEET 2 SHEET 3

WINSLOW GOLD CORP.
SNIPPAKER MOUNTAIN PROJECT
LIARD MINING DIVISION
ISKUT RIVER, B.C.

SHEET 2
GEOCHEM
SAMPLE LOCATION

DRAWN BY: J.L., P.P., E.P. DATE: NOVEMBER, 1987
DRAFTED BY: GEO-DRAFTING N.T.S. 104 B 10
SCALE: 1:2500 FIGURE No.: 15

ACTIVE MINERALS LTD.



CHOPIN II

CHOPIN I

SNIP 2

BRONSON GRID

RIDGE LINE GRID

RED BIRD

RED BLUFF

HOMESTAKE

MERMAID

LEGEND

- † Soil Sample Location
- Rock Sample Location
- Contour Interval 100 metres
- Cu ppm (Copper)
- Zn ppm (Zinc)
- Diamond Drill Hole Location and Direction

INDEX SHEET 1 SHEET 2 SHEET 3

PART 2 OF 2
GEOLOGICAL BRANCH
ASSESSMENT REPORT

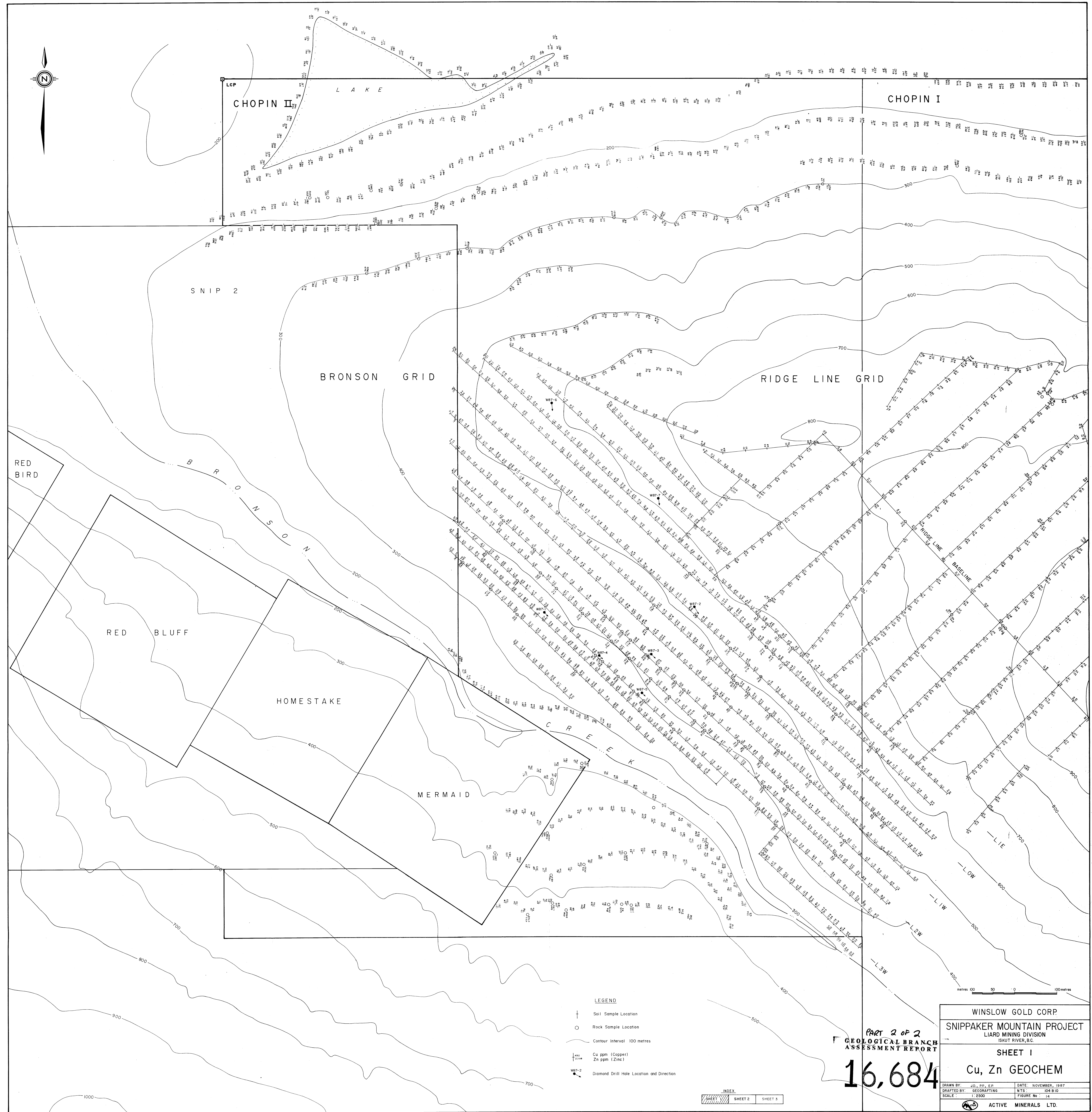
16,684

WINSLOW GOLD CORP.
 SNIPPAKER MOUNTAIN PROJECT
 LIARD MINING DIVISION
 ISKUT RIVER, B.C.

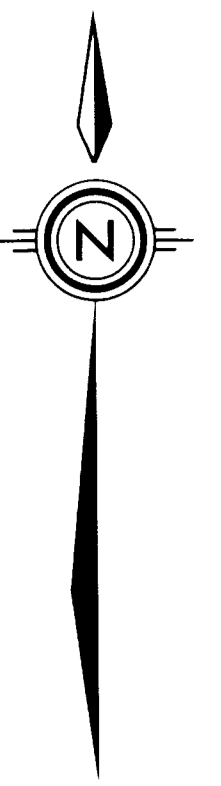
SHEET 1
 Cu, Zn GEOCHEM

DRAWN BY: J.D. P.S. E.P. DATE: NOVEMBER, 1987
 DRAFTED BY: GEODRAFTING NTS: J04 B10
 SCALE: 1:2500 FIGURE No: 14

ACTIVE MINERALS LTD.



L A K E



CHOPIN I

HANDEL

HANDEL

GRID

RIDGE LINE GRID

GEOLOGICAL BRANCH ASSESSMENT REPORT PART 2 OF 2

16,684

metres 100 50 0 100 metres

WINSLOW GOLD CORP.

SNIPPAKER MOUNTAIN PROJECT
LIARD MINING DIVISION
ISKUT RIVER, B.C.

SHEET 2
Au, Ag GEOCHEM

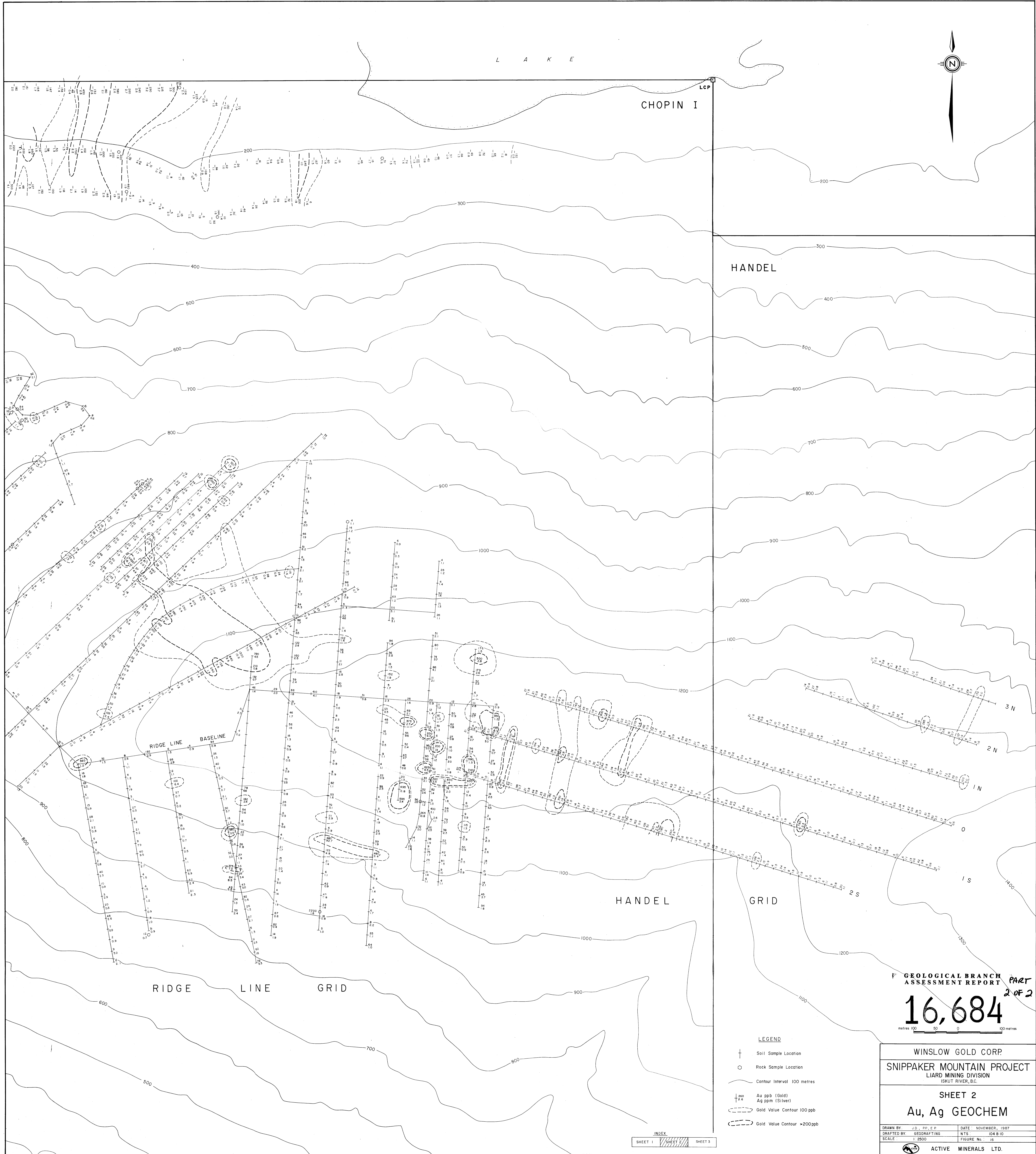
DRAWN BY: J.D. P.P., E.P. DATE: NOVEMBER, 1987
DRAFTED BY: GEODRAFTING N.T.S. 104 B 10
SCALE: 1:2500 FIGURE No. 16

ACTIVE MINERALS LTD.

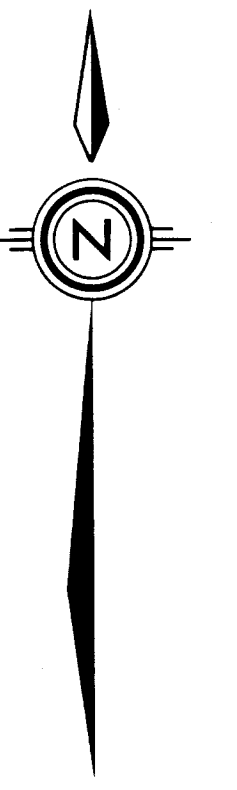
LEGEND

- † Soil Sample Location
- Rock Sample Location
- Contour Interval 100 metres
- Au ppb (Gold)
- Ag ppm (Silver)
- Gold Value Contour 100ppb
- Gold Value Contour >200ppb

INDEX
SHEET 1 SHEET 2 SHEET 3



L A K E



CHOPIN I

HANDEL

HANDEL

GRID

RIDGE LINE GRID

PART 2 OF 2
GEOLOGICAL BRANCH
ASSESSMENT REPORT

16,684

metres 100 50 0 100 metres

LEGEND

- † Soil Sample Location
- Rock Sample Location
- Contour Interval 100 metres
- †** Cu ppm (Copper)
- †** Zn ppm (Zinc)

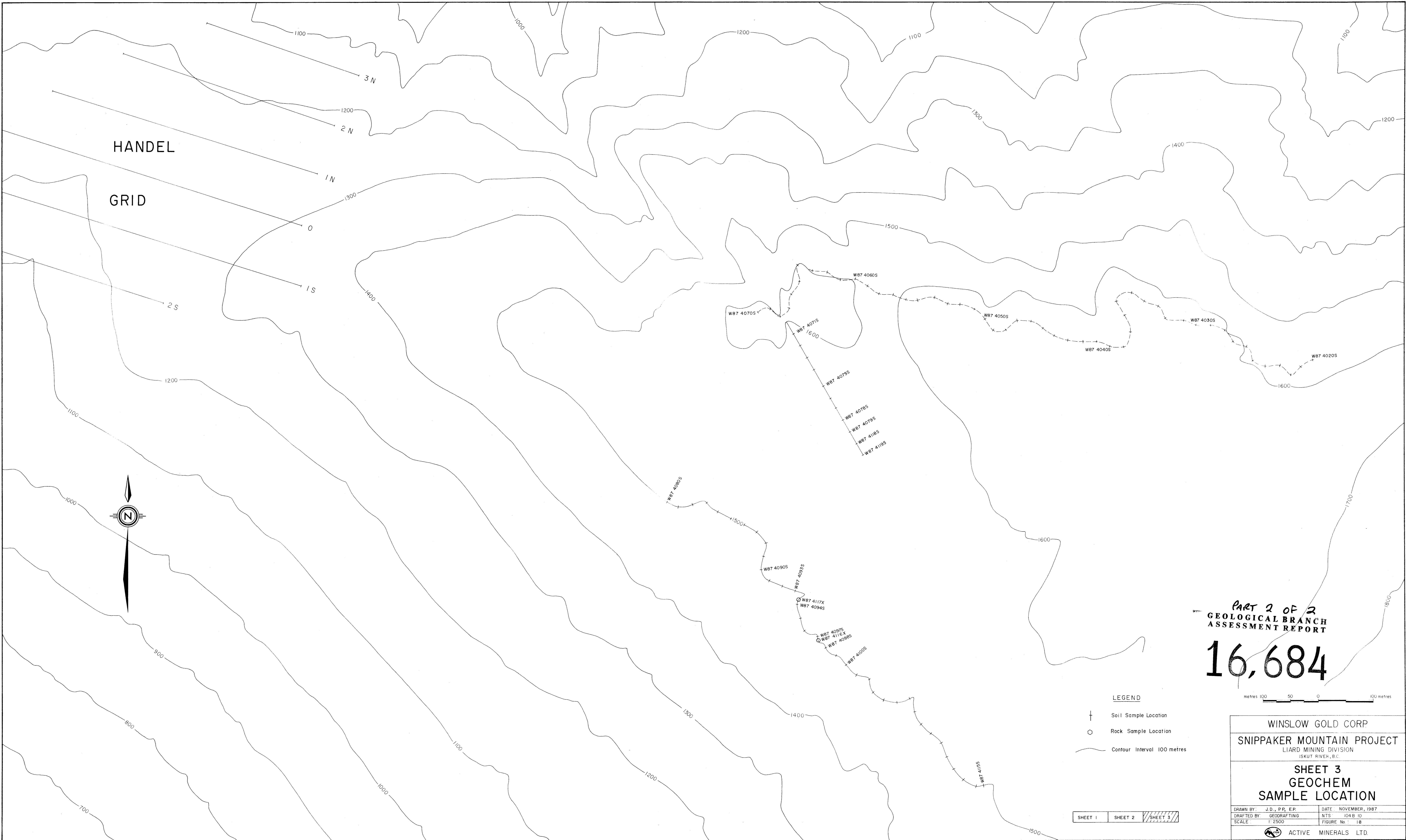
INDEX
SHEET 1 SHEET SHEET 3

WINSLOW GOLD CORP
SNIPPAKER MOUNTAIN PROJECT
LIARD MINING DIVISION
ISKUT RIVER, B.C.

SHEET 2
Cu, Zn GEOCHEM

DRAWN BY: J.D., P.P., E.P.	DATE: NOVEMBER, 1987
DRAFTED BY: GEO-DRAFTING	NTS: 104 B 10
SCALE: 1:2500	FIGURE No.: 17

ACTIVE MINERALS LTD.



Part 2 of 2
 GEOLOGICAL BRANCH
 ASSESSMENT REPORT

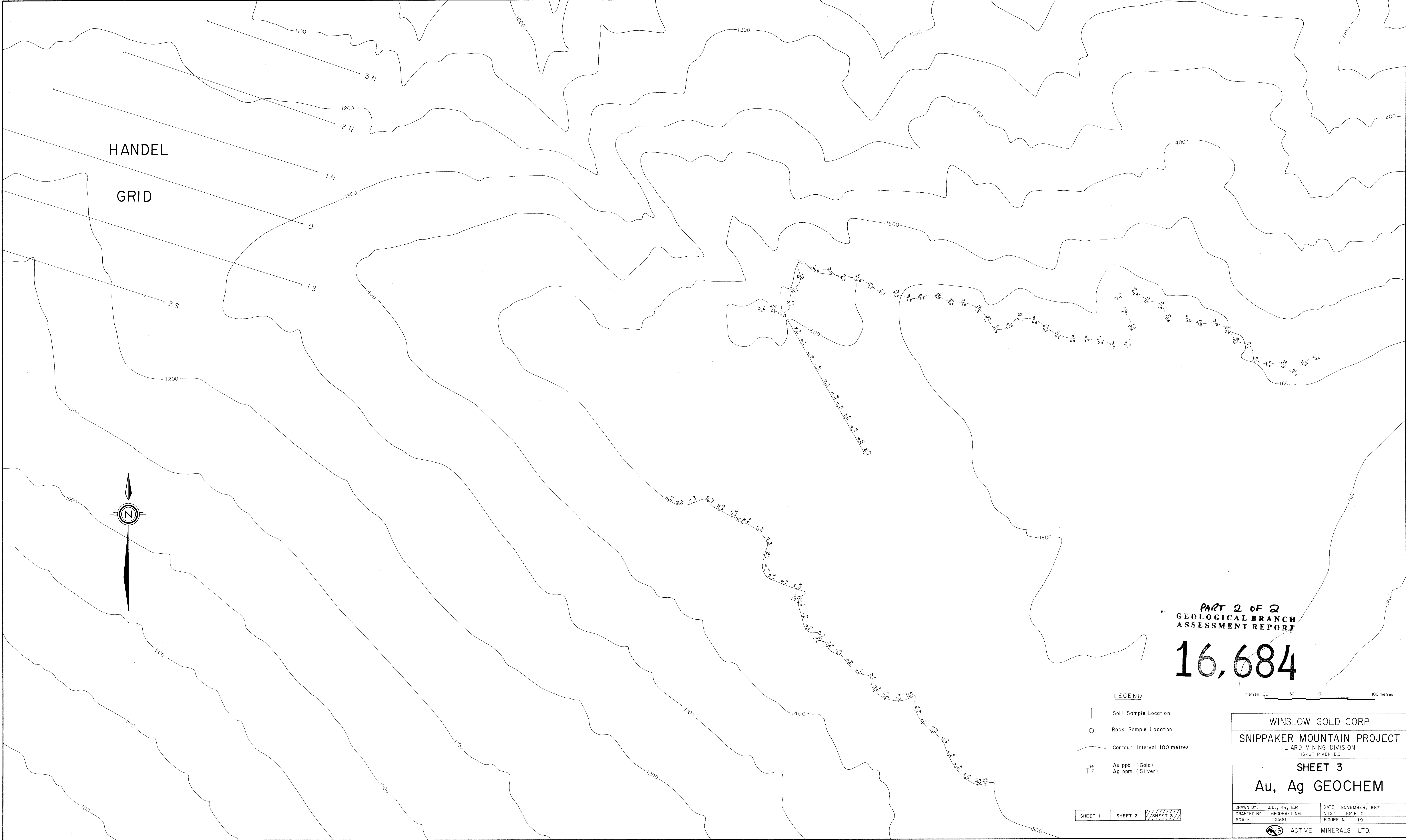
16,684

metres 100 50 0 100 metres

LEGEND
 † Soil Sample Location
 ○ Rock Sample Location
 — Contour Interval 100 metres

SHEET 1 | SHEET 2 | **SHEET 3**

WINSLOW GOLD CORP	
SNIPPAKER MOUNTAIN PROJECT	
LIARD MINING DIVISION	
ISKUT RIVER, B.C.	
SHEET 3	
GEOCHEM	
SAMPLE LOCATION	
DRAWN BY: J.D., P.P., E.P.	DATE: NOVEMBER, 1987
DRAFTED BY: GEODRAFTING	NTS: 104B 10
SCALE: 1:2500	FIGURE No.: 1B
ACTIVE MINERALS LTD.	



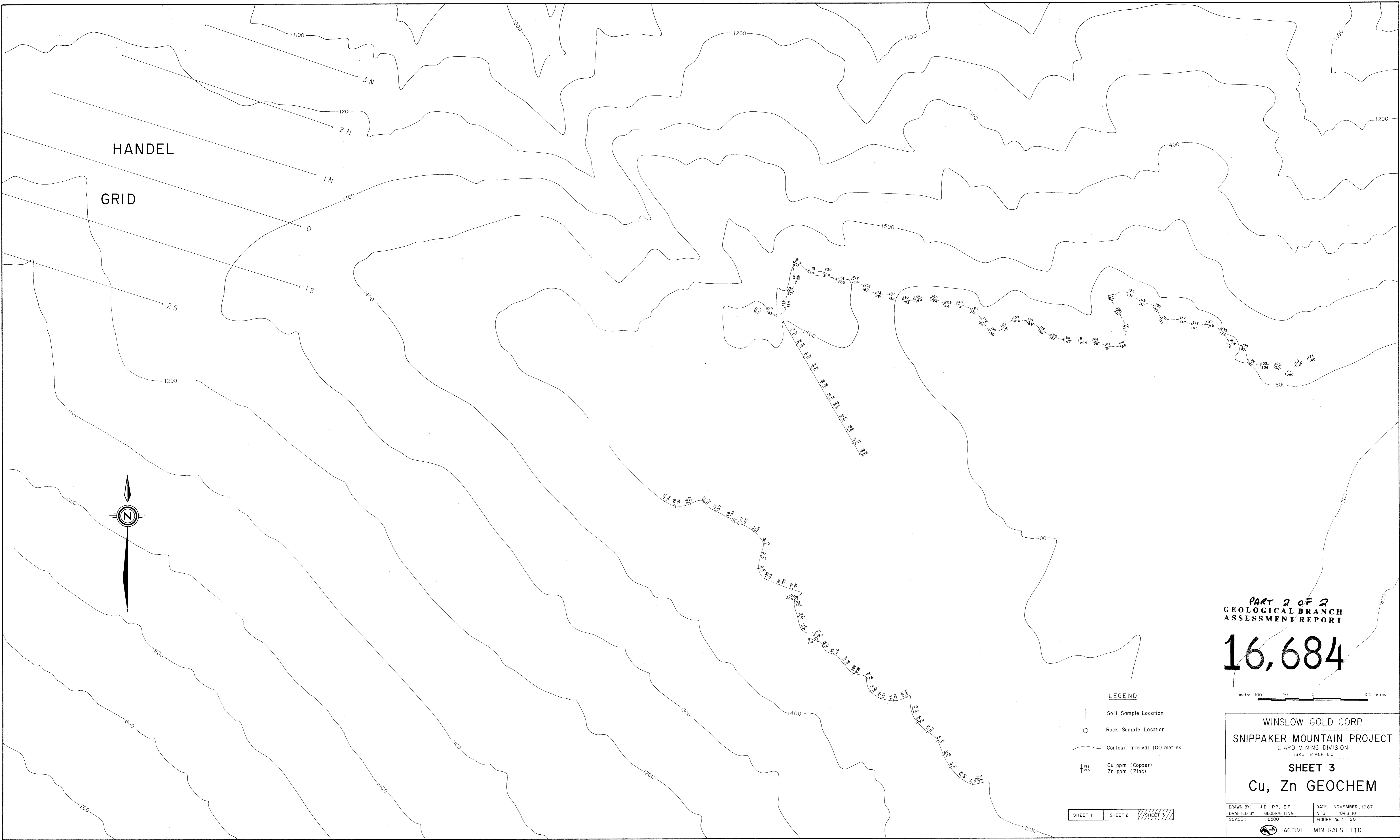
PART 2 OF 2
GEOLOGICAL BRANCH
ASSESSMENT REPORT
16,684

metres 100 50 0 100 metres

- LEGEND**
- † Soil Sample Location
 - Rock Sample Location
 - Contour Interval 100 metres
 - 1.96 Au ppb (Gold)
 - 1.17 Ag ppm (Silver)

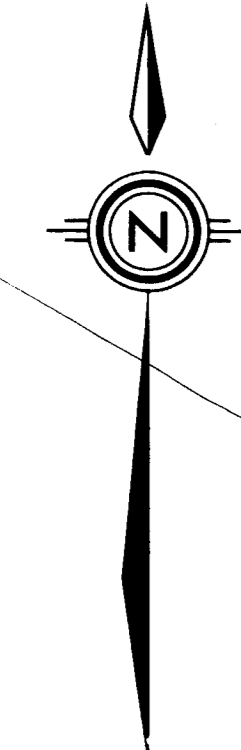
SHEET 1 SHEET 2 **SHEET 3**

WINSLOW GOLD CORP.	
SNIPPAKER MOUNTAIN PROJECT	
LIARD MINING DIVISION ISKUT RIVER, B.C.	
SHEET 3	
Au, Ag GEOCHEM	
DRAWN BY: J.D., P.P., E.P.	DATE: NOVEMBER, 1987
DRAFTED BY: GEORAFITING	NTS: 104 B 10
SCALE: 1:2500	FIGURE No.: 19
ACTIVE MINERALS LTD.	



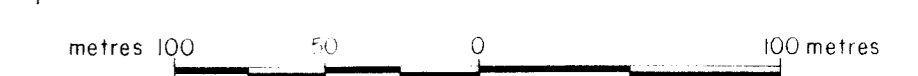
HANDEL

GRID



PART 2 OF 2
GEOLOGICAL BRANCH
ASSESSMENT REPORT

16,684



LEGEND

- † Soil Sample Location
- Rock Sample Location
- Contour Interval 100 metres
- ↑₁₉₂
↓₂₁₃ Cu ppm (Copper)
Zn ppm (Zinc)

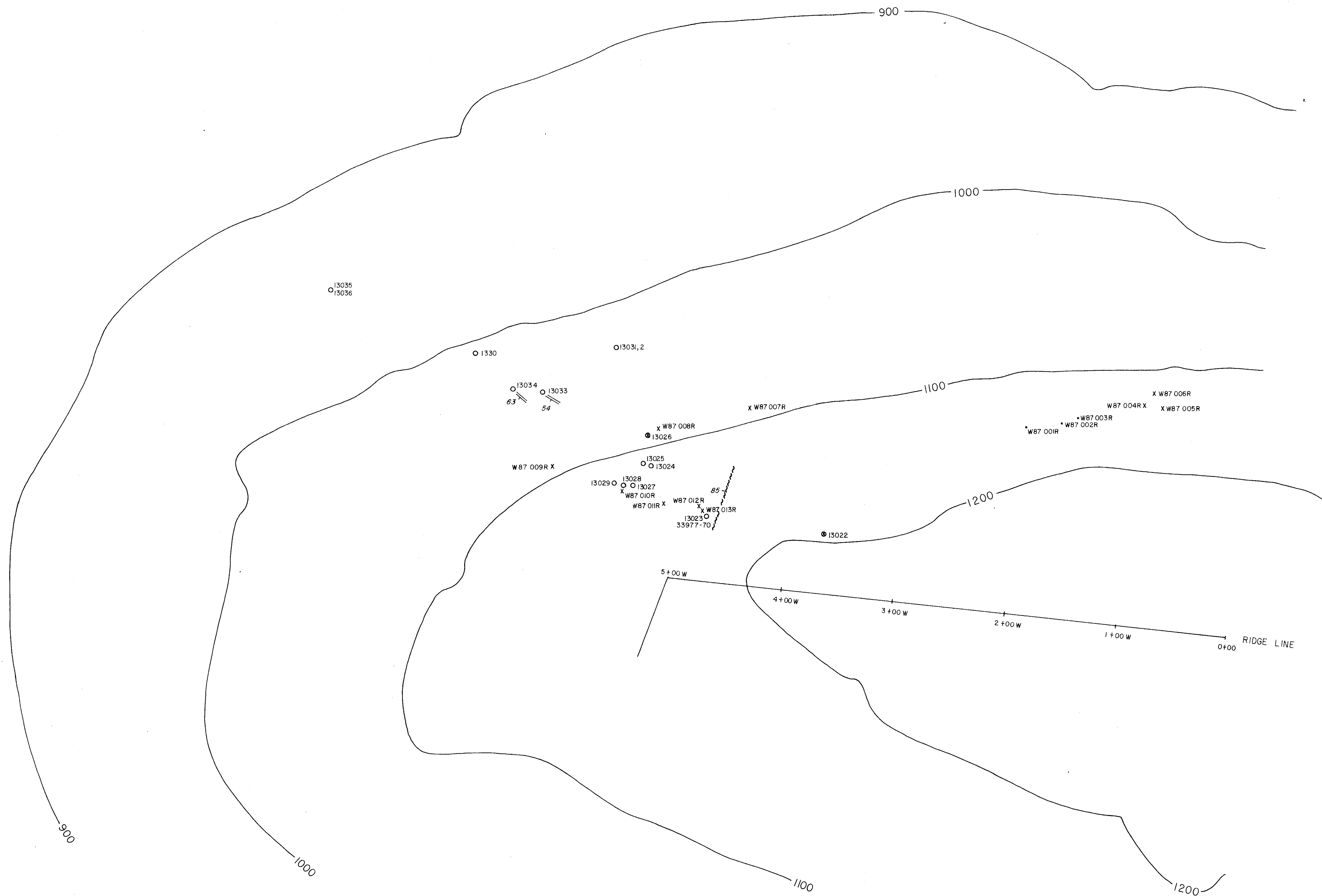
SHEET 1 SHEET 2 **SHEET 3**

WINSLOW GOLD CORP.
SNIPPAKER MOUNTAIN PROJECT
LIARD MINING DIVISION
ISKUT RIVER, B.C.

SHEET 3
Cu, Zn GEOCHEM

DRAWN BY: J.D., P.P., E.P.	DATE: NOVEMBER, 1987
DRAFTED BY: GEODRAFTING	NTS: 104 B 10
SCALE: 1" = 2500'	FIGURE No.: 20

ACTIVE MINERALS LTD.



LEGEND

- x ROCK GRAB SAMPLE
- ⊗ 1m. CHIP SAMPLE
ZnS on SURFACE
- ⊙ 1m CHIP SAMPLE ACROSS VERY RUSTY WEATHERED ROCK
(Py, ± Sp, ± Cpy, ± Aspy, ± Ga)
- 60 FAULT WITH DIP
- 23 VEIN WITH DIP
- 3+00 RIDGE LINE BASE LINE STATION
- CONTOUR INTERVAL 100 M.

PART 2 OF 2

**GEOLOGICAL BRANCH
ASSESSMENT REPORT**

16,684

metres 100 50 0 100 metres

WINSLOW GOLD CORP.
SNIPPAKER MOUNTAIN PROJECT
LIARD MINING DIVISION
ISKUT RIVER, B.C.

RIDGE SHOWING
ROCK CHIP SAMPLE LOCATIONS

DRAWN BY: J.D.	DATE: NOVEMBER, 1987
DRAFTED BY: GEODRAFTING	NTS: 104 B 10
SCALE: 1:2500	FIGURE No.: 21

ACTIVE MINERALS LTD.

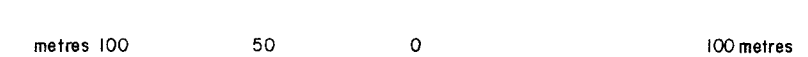


LEGEND

- DARK GREEN FOLIATED ALTERATION ZONE
- ROCK CHIP SAMPLE ACROSS 1M.
- ROCK GRAB SAMPLE
- DIAMOND DRILL HOLE LOCATION AND DIRECTION
- 200 — CONTOURS IN METRES

**PART 2 OF 2
GEOLOGICAL BRANCH
ASSESSMENT REPORT**

16,684



WINSLOW GOLD CORP.	
SNIPPAKER MOUNTAIN PROJECT LIARD MINING DIVISION ISKUT RIVER, B.C.	
BRONSON GRID DIAMOND DRILL HOLE LOCATIONS AND ROCK SAMPLE LOCATIONS	
DRAWN BY: J.D.	DATE: NOVEMBER, 1987
DRAFTED BY: GEODRAFTING	NTS: 104 B 10
SCALE: 1:2500	FIGURE No.: 22
ACTIVE MINERALS LTD.	