

GEOLOGICAL, GEOPHYSICAL, GEOCHEMICAL,
DIAMOND DRILLING AND
UNDERGROUND EXPLORATION REPORT

ON THE
STANDARD CREEK PROPERTY
OF
ARMENO RESOURCES INC.
AND
TRANS ATLANTIC RESOURCES INC.

PAT AND BUTTE CLAIM GROUPS
LILLOOET MINING DIVISION
NTS 92 J 10
LATITUDE 50°42'N, LONGITUDE 122°37'W

BY
Thomas H. Carpenter, B.Sc., F.G.A.
and
Larry R. Haynes, B.Sc., F.G.A.C.

Azimuth Geological Incorporated
February 1988
Vancouver, B.C.

OF 8
PART 6
16725

GEOLOGICAL, GEOPHYSICAL, GEOCHEMICAL
DIAMOND DRILLING AND
UNDERGROUND EXPLORATION REPORT

on the

STANDARD CREEK PROPERTY

Lillooet Mining Division, B.C.

FILMED

VOLUME 3B

- Illustrations -

GEOLOGICAL BRANCH
ASSOCIATED REPORT

16,725

Part 6 of 8

SUB-RECORDER
RECEIVED
MAR 19 1988
M.R. # \$
VANCOUVER,

LIST OF ILLUSTRATIONS

(Volume 3B)

- 7.6.2 Lower Piebiter/Chalco - Geology
- 7.6.3 Lower Piebiter/Chalco - VLF/EM (Profiles)
- 7.6.4 Lower Piebiter/Chalco - VLF/EM (Fraser Filter)
- 7.6.5 Lower Piebiter/Chalco - ppb Au in Soils
- 7.6.6 Lower Piebiter/Chalco - ppm As in Soils

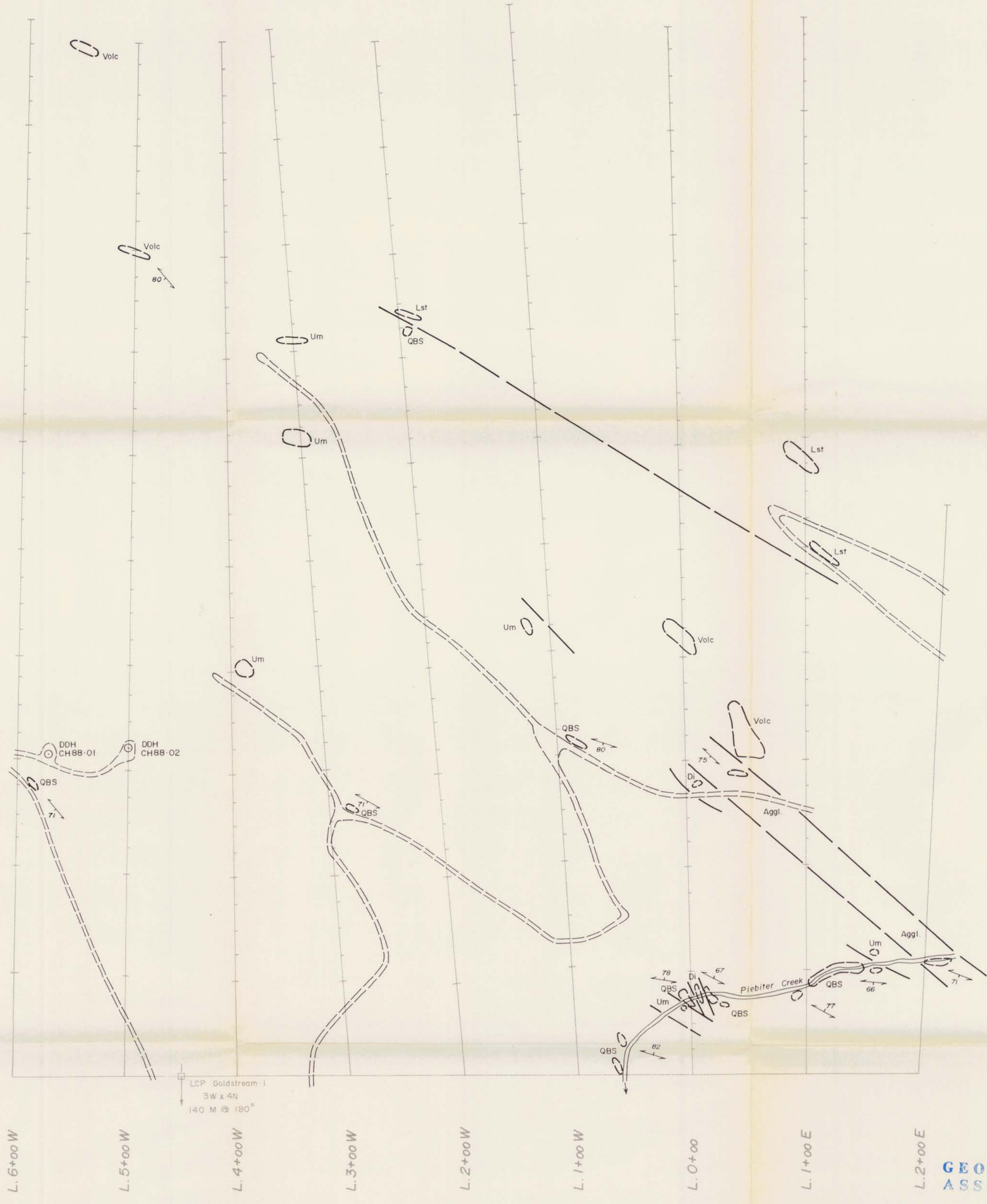
- 7.7.1 Royal Piebiter - VLF/EM (Profiles)
- 7.7.2 Royal Piebiter - VLF/EM (Fraser Filter)
- 7.7.3 Royal Piebiter - VLF/EM (Magnetometer)

- 7.9.1 Butte - I.X.L. - Geology
- 7.9.2 Butte - I.X.L. - VLF/EM (Profiles)
- 7.9.3 Butte - I.X.L. - VLF/EM (Fraser Filter)
- 7.9.4 Butte - I.X.L. - Magnetometer
- 7.9.5 Butte - I.X.L. - ppb Au in Soils
- 7.9.6 Butte - I.X.L. - ppm As in Soils

- 7.10.1 Butte - X - Cal - VLF/EM (Profiles)
- 7.10.2 Butte - X - Cal - VLF/EM (Fraser Filter)
- 7.10.3 Butte - X - Cal - Reconnaissance VLF/EM Lines



15+00 N
14+00 N
13+00 N
12+00 N
11+00 N
10+00 N
9+00 N
8+00 N
7+00 N
6+00 N
5+00 N



GEOLOGICAL BRANCH
ASSESSMENT REPORT

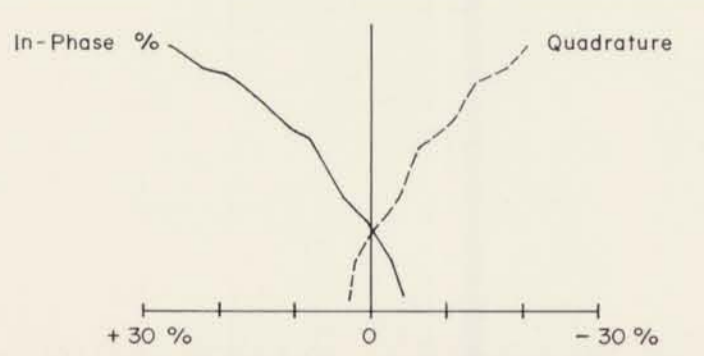
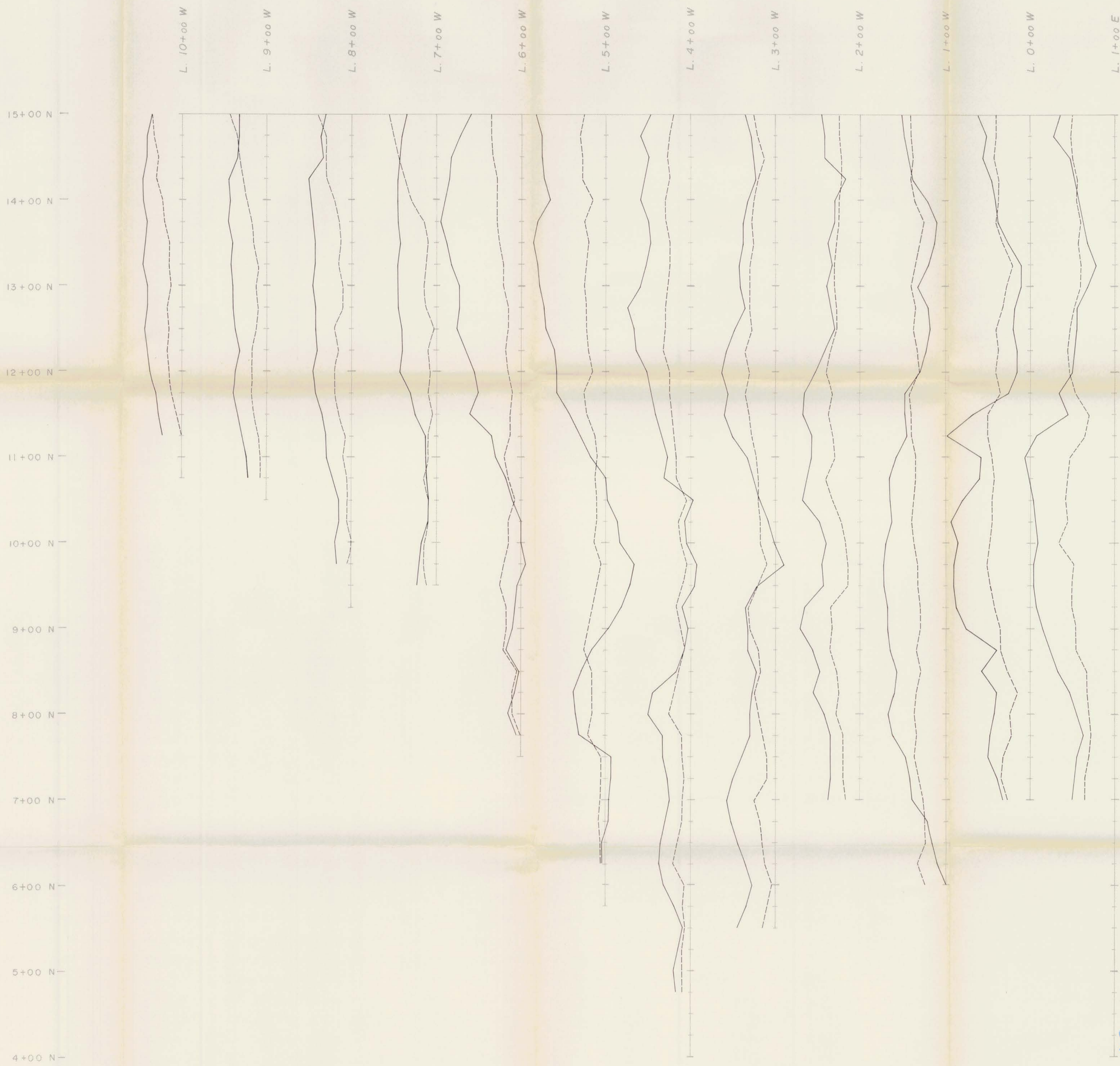
16,725
Part 6 of 8

○ Outcrop
QBS - Quartz Biotite Schist
Lst - Limestone
Volc - Volcanic (undifferentiated)
Aggl - Agglomerate
Um - Ultramafic
Di - Diorite

--- Contact (assumed)
↗ Foliation (strike + dip)
== Road
~~ Creek



ARMENO RESOURCES INC. TRANS ATLANTIC RESOURCES INC. STANDARD CREEK PROPERTY		
- Chalco Grid -		
GEOLOGY		
Azimuth Geological Incorporated	By: T.H.C. N.E.S. 92-J/10 Date: Feb. '88	Figure: 7-6-2



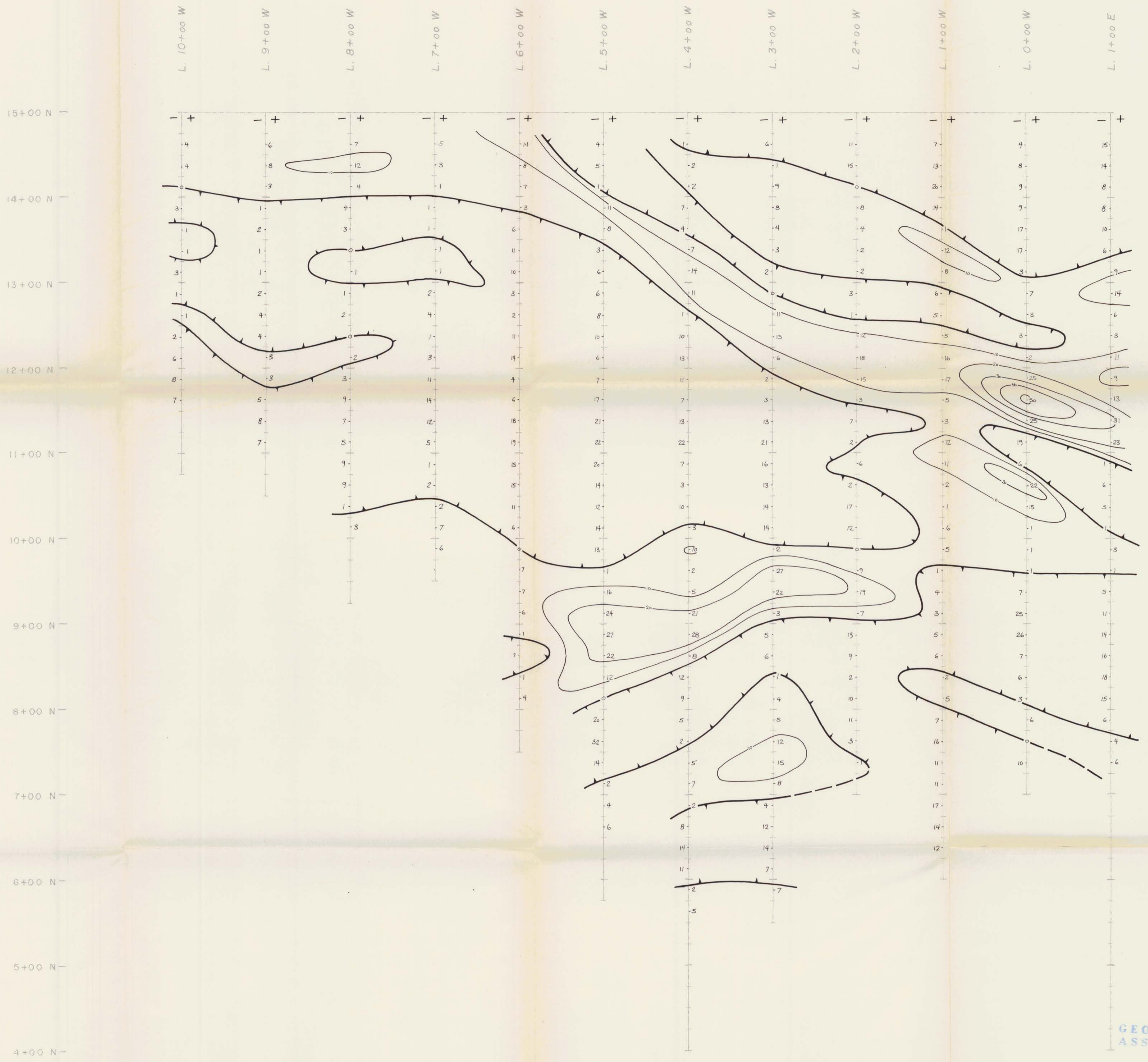
Cutter, Maine



GEOLOGICAL BRANCH
ASSESSMENT REPORT

16,725
Part 6 of 8

ARMENO RESOURCES INC.		
TRANS ATLANTIC RESOURCES INC.		
STANDARD CREEK PROPERTY		
- Chalco Grid -		
VLF - EM 16 SURVEY		
In-Phase % & Quadrature Profiles		
Azimuth	By: K.K.	Figure: 7-6-3
Geological	N.T.S. 92-J/10	
Incorporated	Date: Feb. '88	



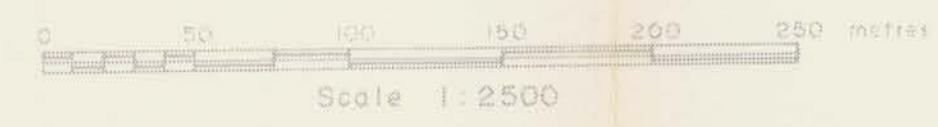
GEOLOGICAL BRANCH
ASSESSMENT REPORT

16,725

Part 6 of 8

ARMENO RESOURCES INC.
TRANS ATLANTIC RESOURCES INC.
STANDARD CREEK PROPERTY
- Chalco Grid -
VLF-EM 16 SURVEY
Fraser Filter Contours

Azimuth	By	K.K.	Figure
Geological	Date	92-J/10	7-6-4
Incorporated	Date	Feb. '88	



Cutler, Maine



GEOLOGICAL BRANCH
ASSESSMENT REPORT

16,725

Part 6 of 8

NOTE: Au values < 5ppb denoted by /



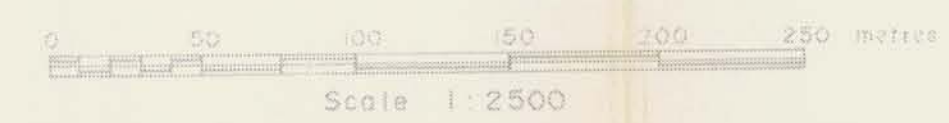
ARMENO RESOURCES INC. TRANS ATLANTIC RESOURCES INC. STANDARD CREEK PROPERTY - Chalco Grid -		
ppb Au in Soils		
Azimuth Geological Incorporated	By: T.H.C. Date: 92-J/10 Feb. '88	Figure: 7-6-5



GEOLOGICAL BRANCH
ASSESSMENT REPORT

16,725
Part 6 of 8

NOTE: As values < 5 ppm denoted by 0

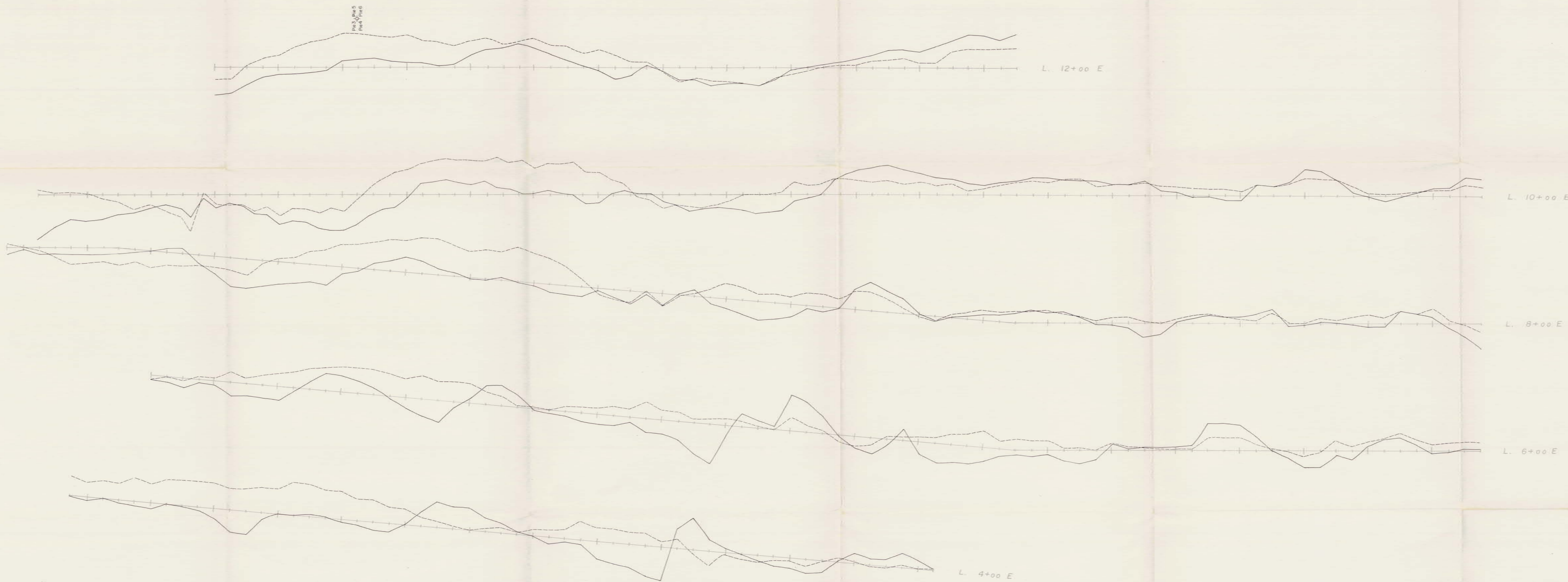


ARMENCO RESOURCES INC.
TRANS ATLANTIC RESOURCES INC.
STANDARD CREEK PROPERTY
- Chalco Grid -

ppm As in Soils

Azimuth	By: T.H.C.	Figure
Geological	NTA 92-J/10	7-6-6
Incorporated	Date: Feb '88	

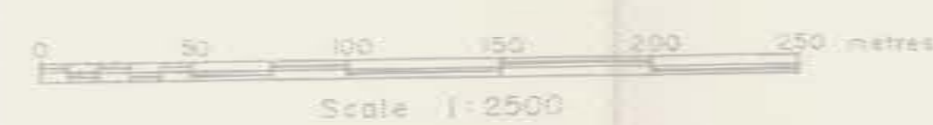
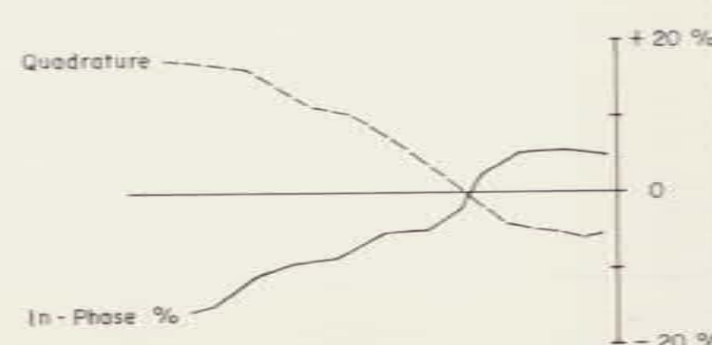
7+00N
6+00N
5+00N
4+00N
3+00N
2+00N
1+00N
0+00
1+00S
2+00S
3+00S
4+00S
5+00S
6+00S
7+00S
8+00S
9+00S
10+00S
11+00S
12+00S
13+00S
14+00S
15+00S



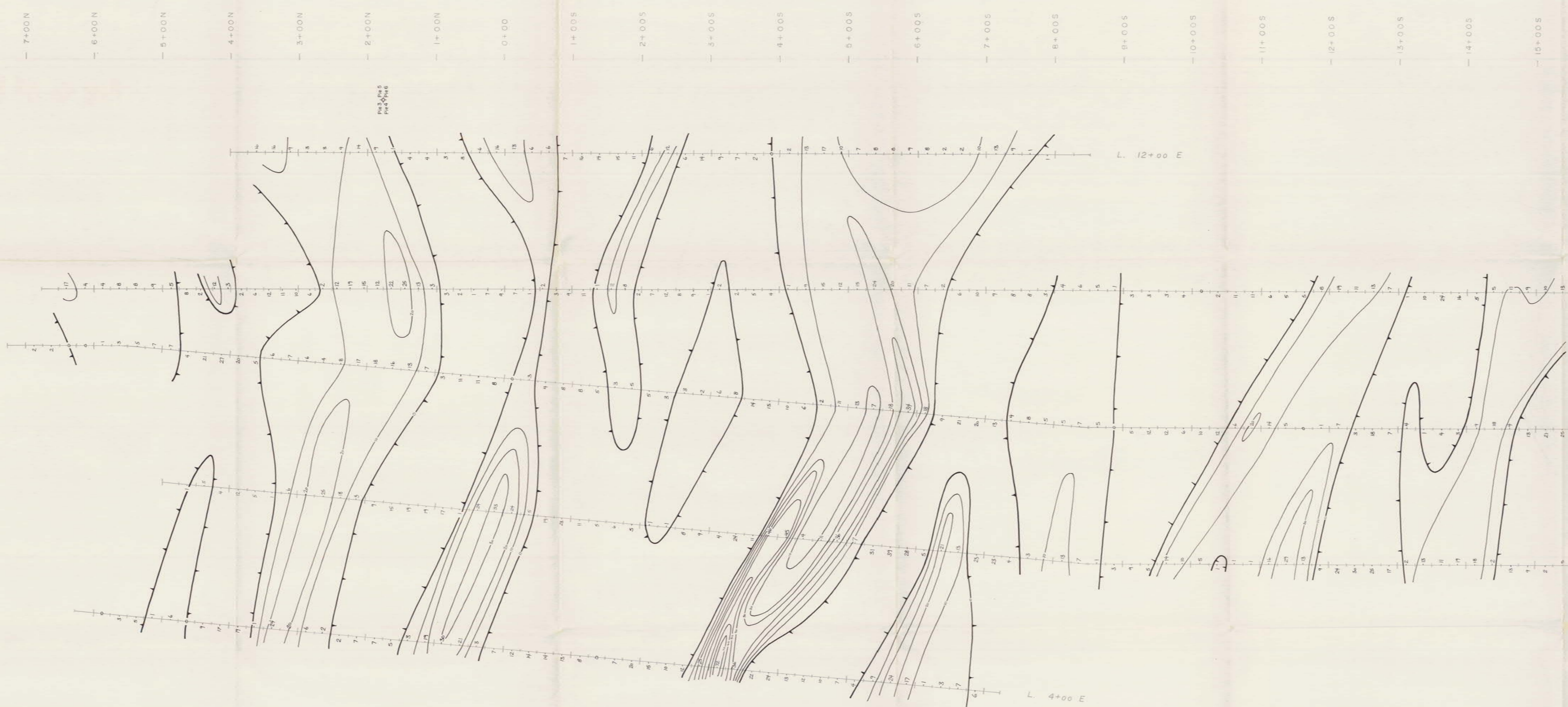
GEOLOGICAL BRANCH
ASSESSMENT REPORT

16,725
Part 6 of 8

CUTLER, Moore

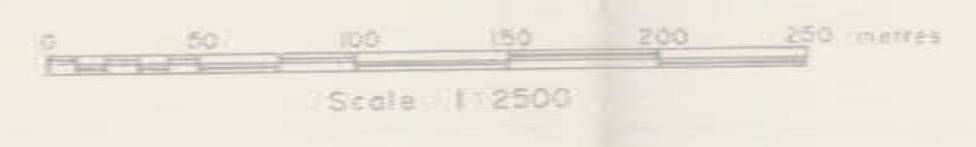


ARMEND RESOURCES INC.		
TRANS ATLANTIC RESOURCES INC.		
STANDARD CREEK PROPERTY		
- Royal - Plebiter Grid -		
VLF - EM 16 SURVEY		
In-Phase % & Quadrature Profiles		
Geologist	K.K.	7-7-1
Geological Incorporated	92-2/10	
	Feb. '88	

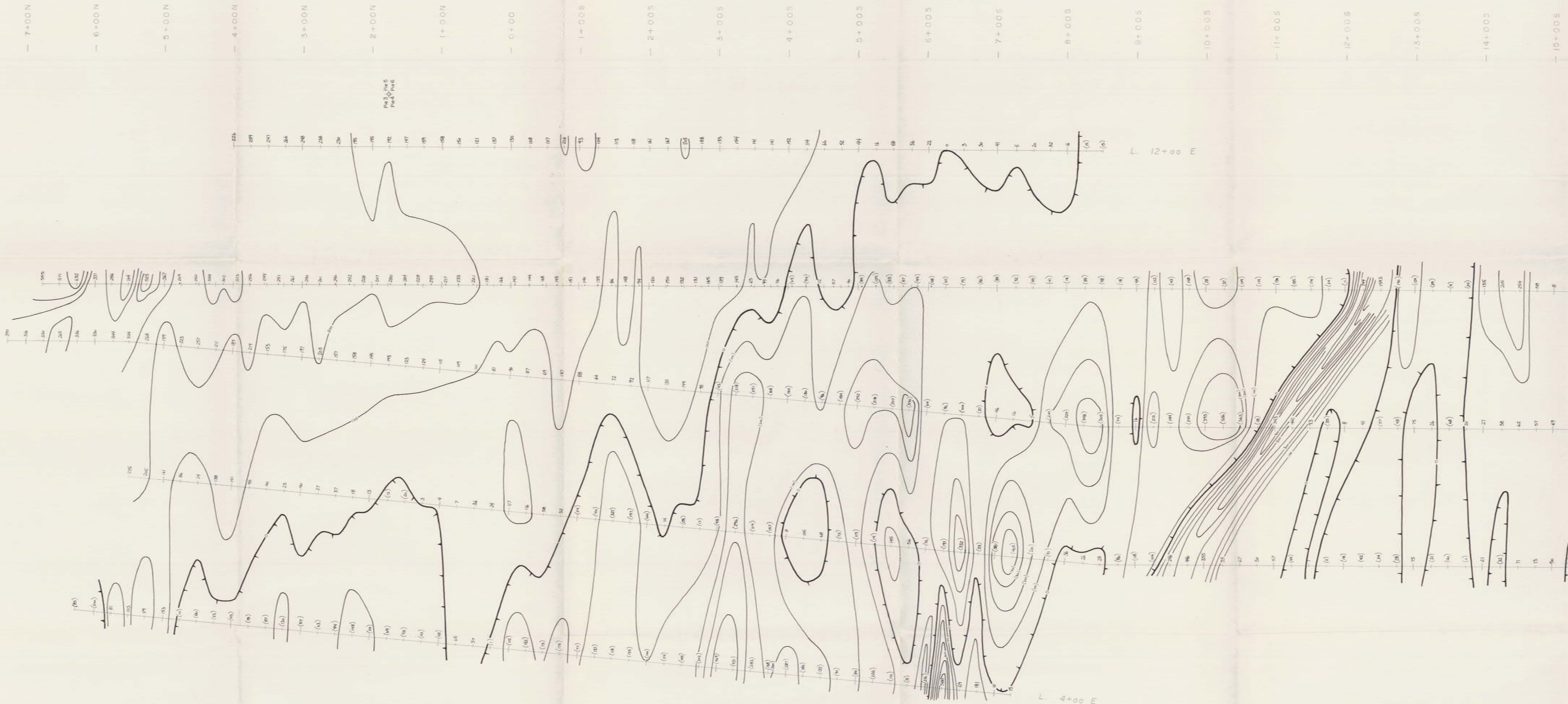


GEOLOGICAL BRANCH
ASSESSMENT REPORT

16,725
Part 6
of 8



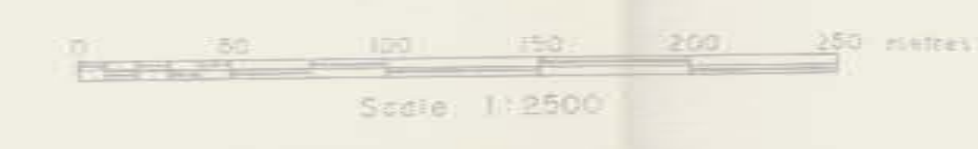
ARMENO RESOURCES INC.			
TRANS ATLANTIC RESOURCES INC.			
STANDARD CREEK PROPERTY			
- Royal - Piebiter Grid -			
VLF - EM 16 SURVEY			
Fraser Filter Contours			
Asmuth Geological Incorporated	By K.K.	Date 32/7/10	Page 7-7-2
		Date Feb. '88	



GEOLOGICAL BRANCH
ASSESSMENT REPORT

16,725
Part 6 of 8

Median Value : 56,800 Gammas
Values below median plotted as negatives e.g. 56,650 = (-150)
" above " " " positives " 56,925 = +125



ARMED RESOURCES INC.		
TRANS ATLANTIC RESOURCES INC.		
STANDARD CREEK PROPERTY		
- Royal - Piebiter Grid -		
MAGNETOMETER SURVEY		
Atkinson Geological Incorporated	by O.K.G. 92 J/10 Feb '88	Sheet 7-7-3



0+00
 1+00 S
 2+00 S
 3+00 S
 4+00 S
 5+00 S
 6+00 S
 7+00 S
 8+00 S
 9+00 S
 10+00 S

**GEOLOGICAL BRANCH
 ASSESSMENT REPORT**

16,725
 Part 6 of 8

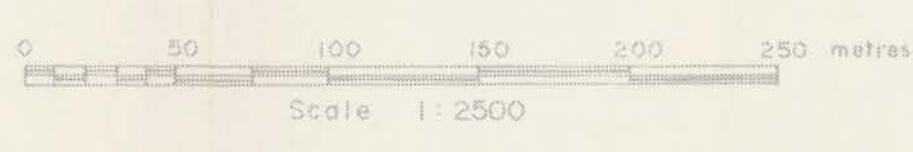
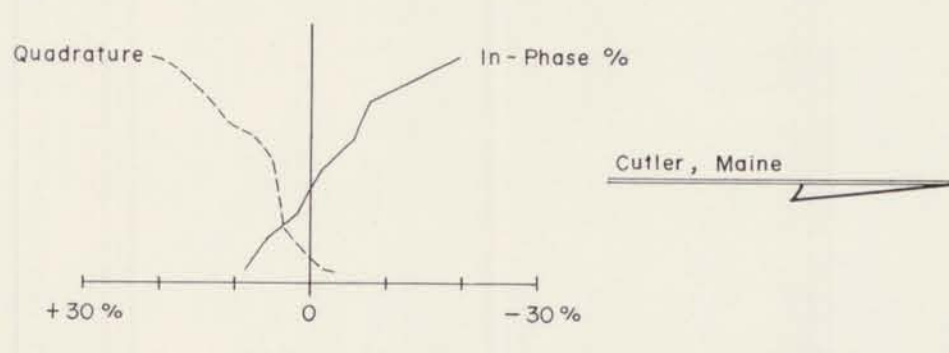
ARMEND RESOURCES INC. TRANS ATLANTIC RESOURCES INC. STANDARD CREEK PROPERTY - Butte - IXL Grid -		
GEOLOGY		
Azimuth Geological Incorporated	By: J.F.C. NTS 92-J/10 Date: Jan. 1988	Page: 7-9-1

LEGEND		ABBREVIATIONS	
	x Outcrop	um	ultramafic
	Float	q.v.	quartz vein
	Contact (assumed)	arg	argillite
	Creek	sil	siliceous
	Swamp	vol	volcanic
	Road, trail	m vol	mafic volcanic
	Strike & dip:	int vol	intermediate volcanic
	schistosity	o/c	outcrop
	bedding		
	jointing		
	Fault		
	Adit (caved)		
	Shaft		

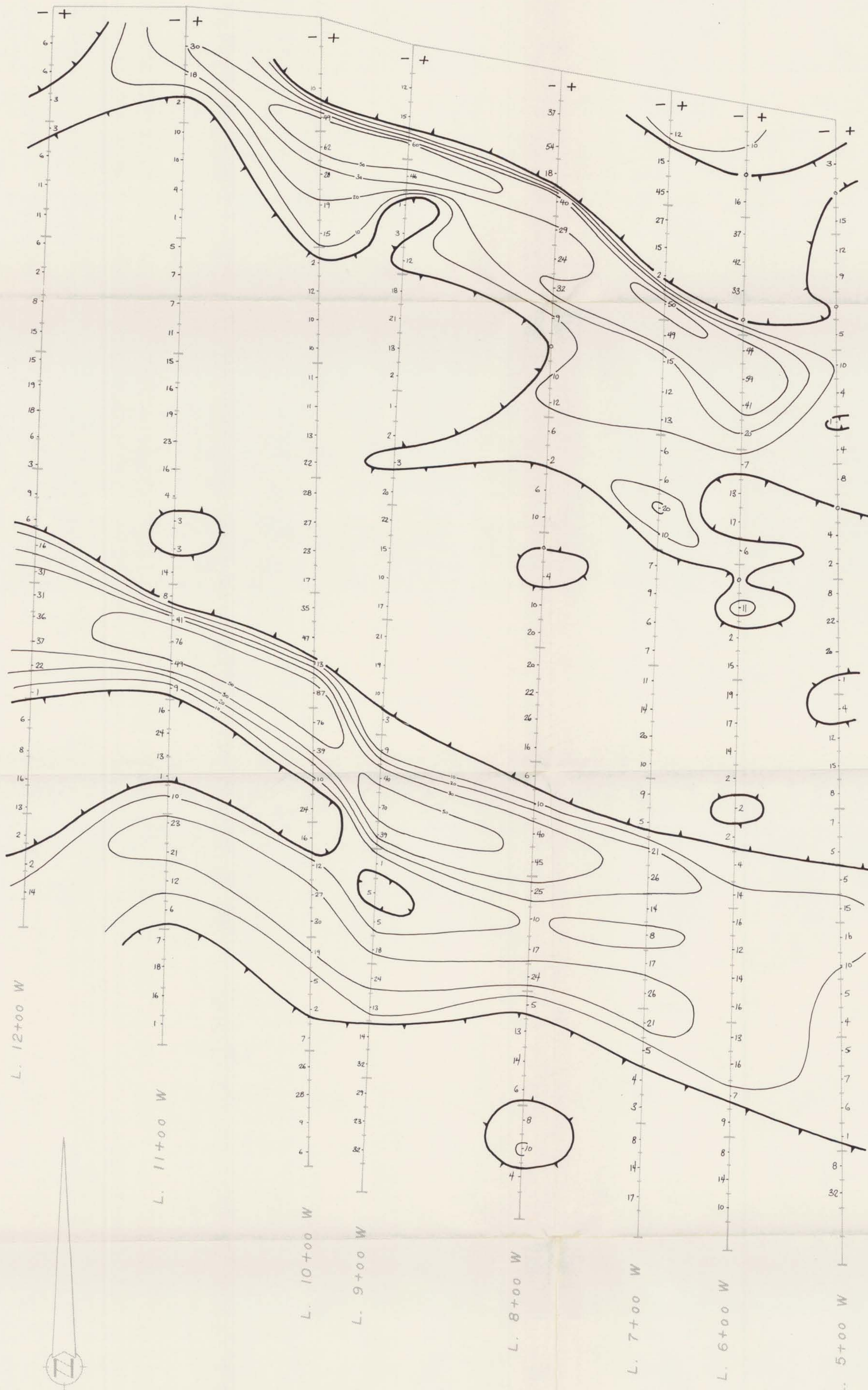




GEOLOGICAL BRANCH
 ASSESSMENT REPORT
16,725 Part 6
 of 8



ARMEND RESOURCES INC.		
TRANS ATLANTIC RESOURCES INC.		
STANDARD CREEK PROPERTY		
- Butte - IXL Grid -		
VLF - EM 16 SURVEY		
In-Phase % & Quadrature Profiles		
Azimuth	By	T.H.C.
Geological	NTS	92-J/10
Incorporated	Date	Feb. '88
		Figure 7-9-2



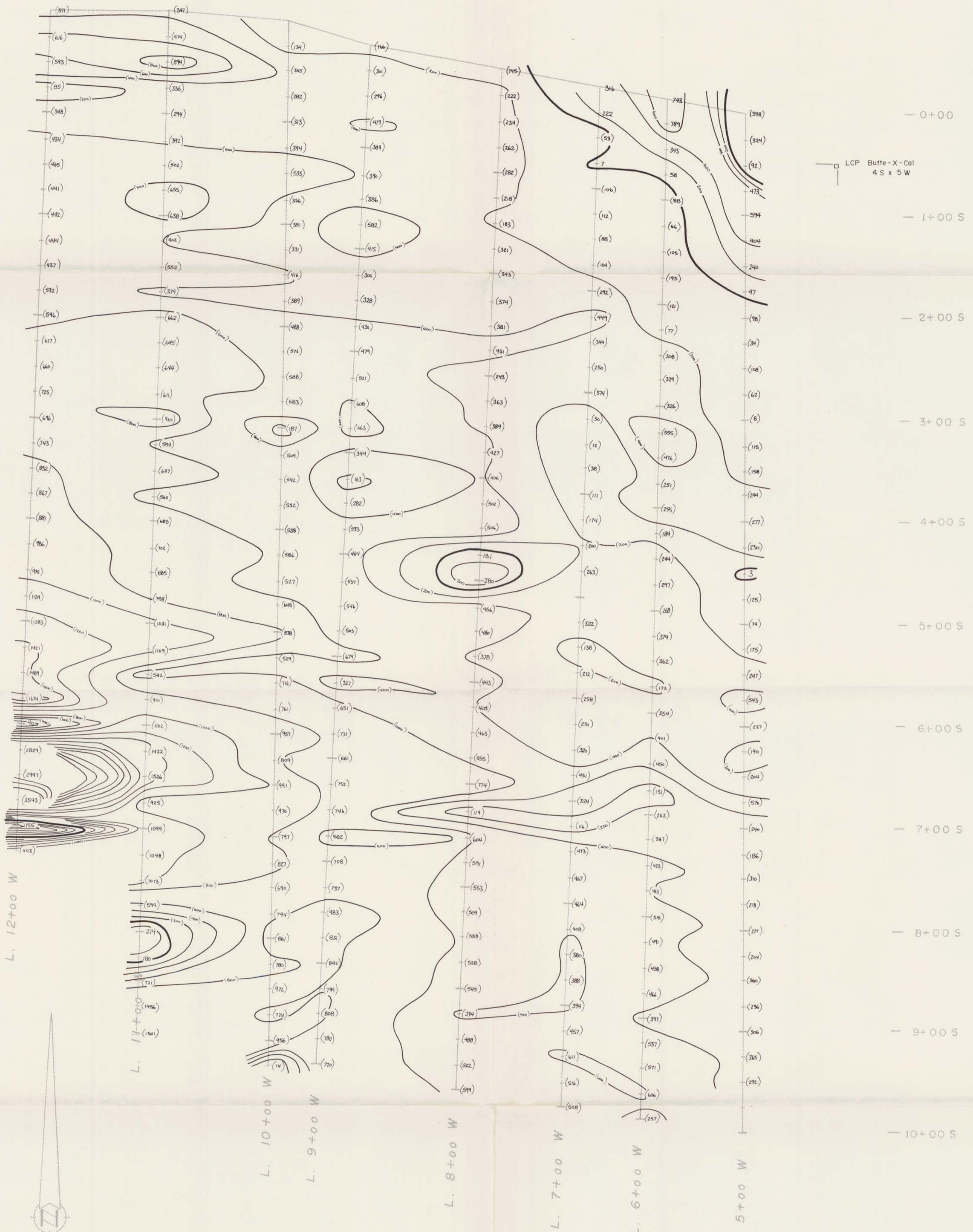
- 0+00
 - 1+00 S
 - 2+00 S
 - 3+00 S
 - 4+00 S
 - 5+00 S
 - 6+00 S
 - 7+00 S
 - 8+00 S
 - 9+00 S
 - 10+00 S

GEOLOGICAL BRANCH
ASSESSMENT REPORT
16,725 Part 6
 #8

Cutler, Maine



ARMENO RESOURCES INC.			
TRANS ATLANTIC RESOURCES INC.			
STANDARD CREEK PROPERTY			
- Butte - I.X.L. Grid -			
VLF - EM 16 SURVEY			
Fraser Filter Contours			
Azimuth	By: G.K.G.	Figure	7-9-3
Geological	NETS 92-J/10		
Incorporated	Date Feb. '88		



GEOLOGICAL BRANCH ASSESSMENT REPORT **Part 6**

16,725 #8

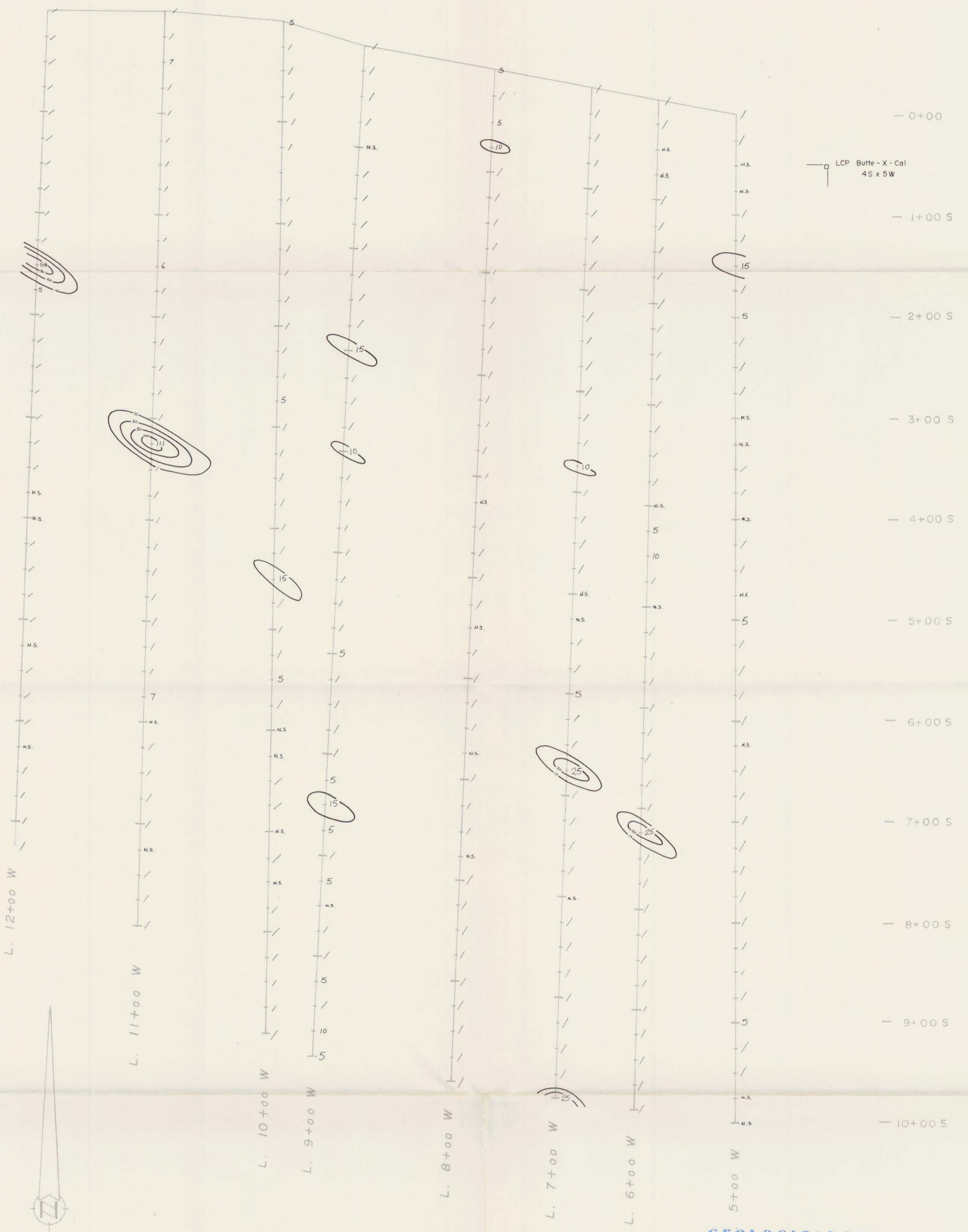
ARMENO RESOURCES INC.
TRANS ATLANTIC RESOURCES INC.
STANDARD CREEK PROPERTY
- Butte - IXL Grid -

MAGNETOMETER SURVEY

Median Corrected Value : 56,800 Gammas
Values below median plotted as negatives e.g. 56,700 = (100)
" above " " " positives e.g. 56,920 = 120



Azimuth Geological Incorporated	By: G.K.G.	Figure 7-9-4
	Date: Feb. '88	



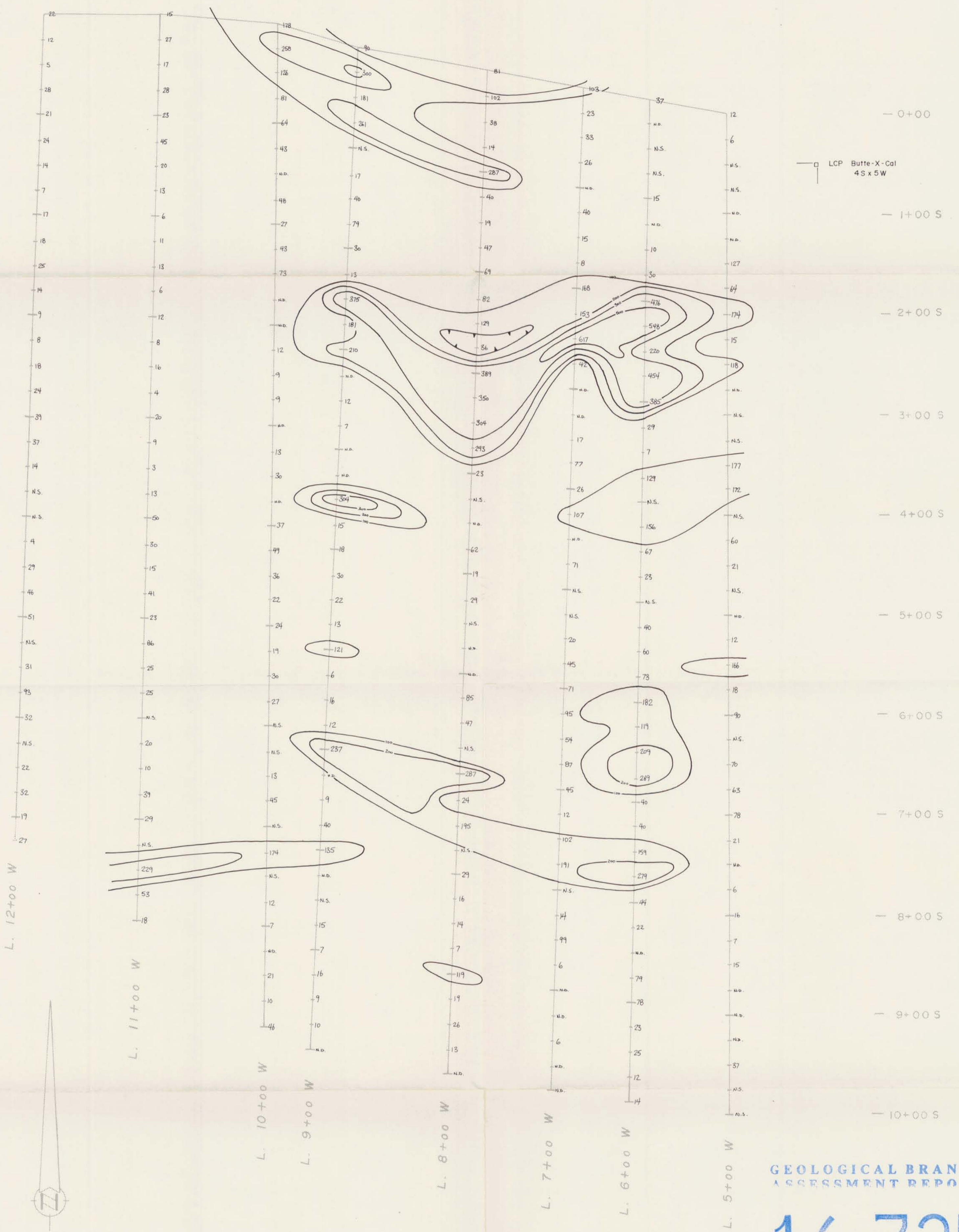
NOTE : values < 5 ppb denoted with /



**GEOLOGICAL BRANCH
ASSESSMENT REPORT**

16,725 Part 6 of 8

ARMENO RESOURCES INC.		
TRANS ATLANTIC RESOURCES INC.		
STANDARD CREEK PROPERTY		
- Butte - IXL Grid -		
ppb Au in Soils		
Azimuth	By: T.H.C.	Figure
Geological	NTS 92-J/10	7-9-5
Incorporated	Date: Feb. '88	

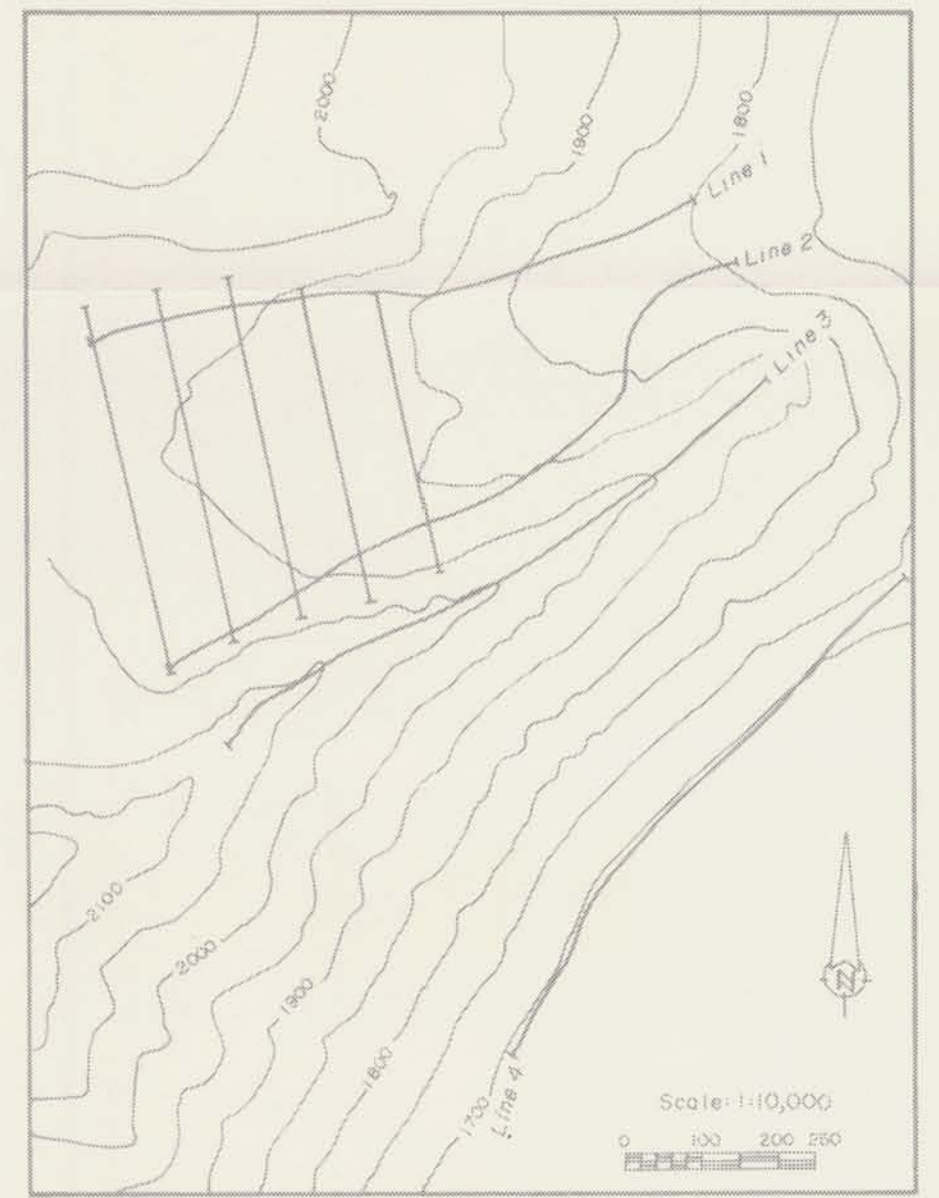
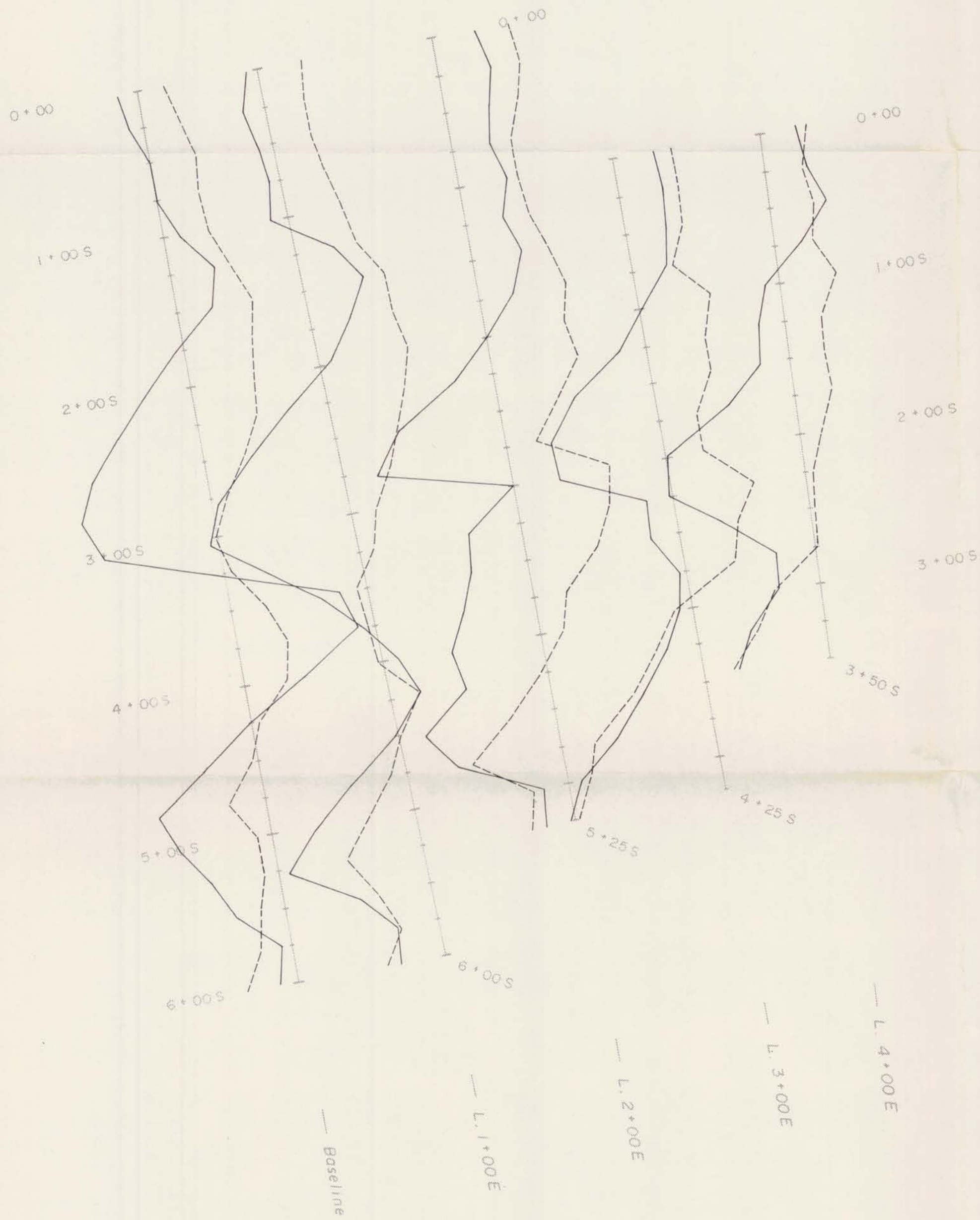


**GEOLOGICAL BRANCH
ASSESSMENT REPORT**

16,725
Part 6 of 8

ARMEND RESOURCES INC. TRANS ATLANTIC RESOURCES INC. STANDARD CREEK PROPERTY - Butte - I.XL. Grid -		
ppm As in Soils		
Azimuth	By	Page
Geological	THC.	7-9-6
Incorporated	NETS 92-J/10 Date: Feb. '88	

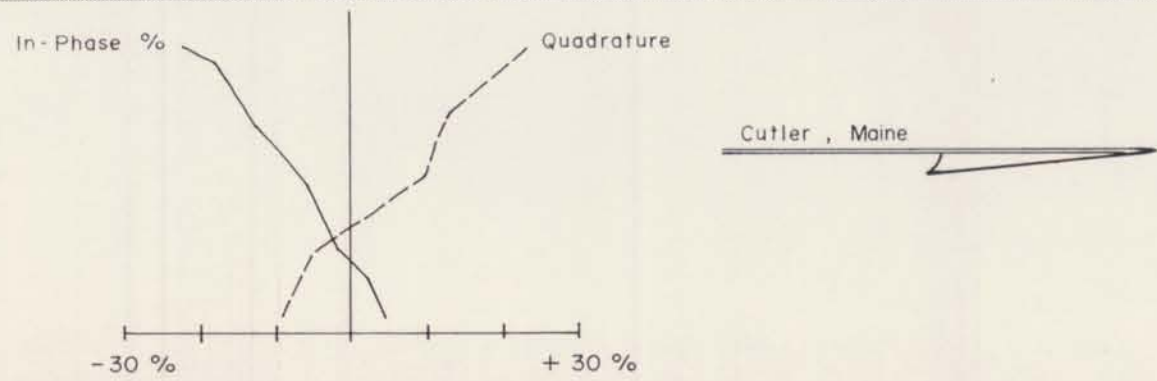




LOCATION MAP

GEOLOGICAL BRANCH
ASSESSMENT REPORT

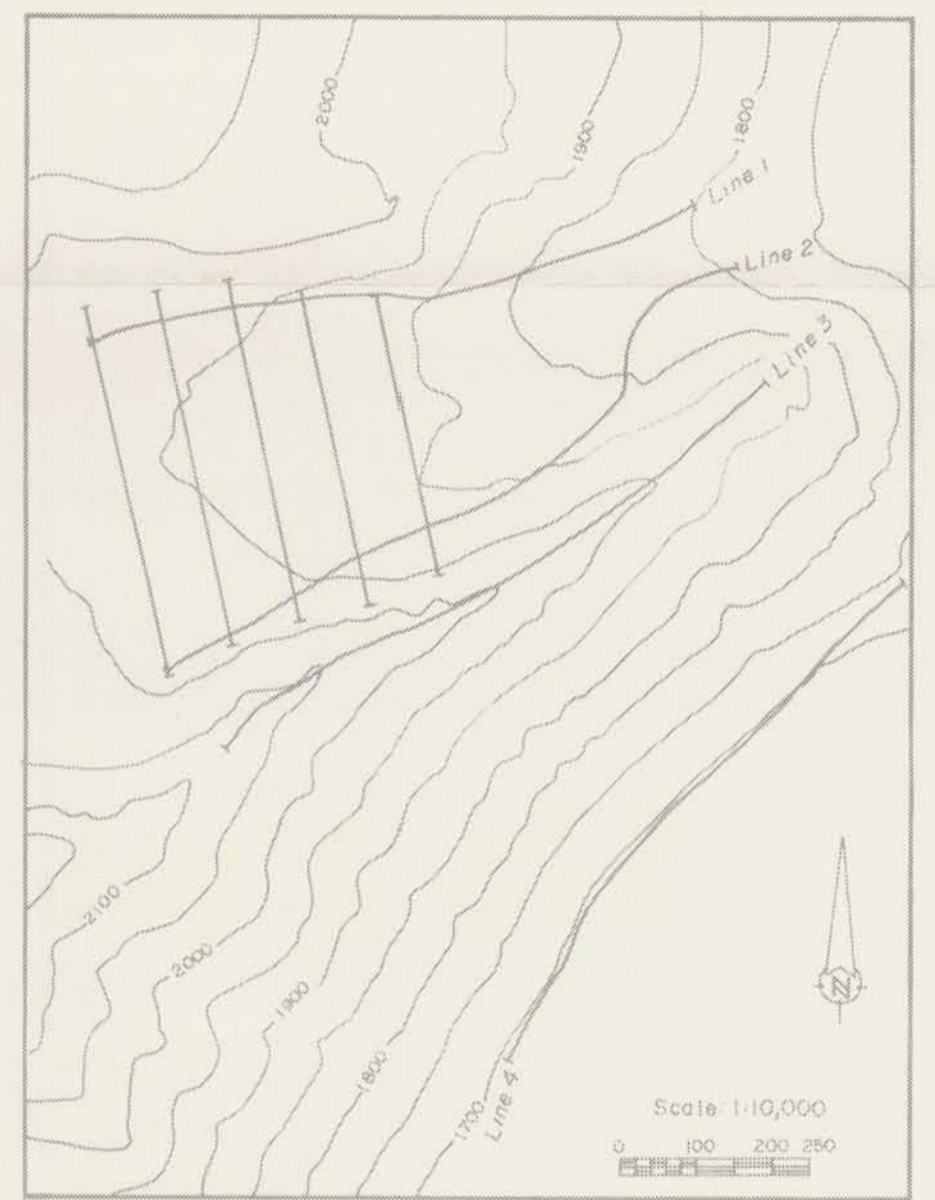
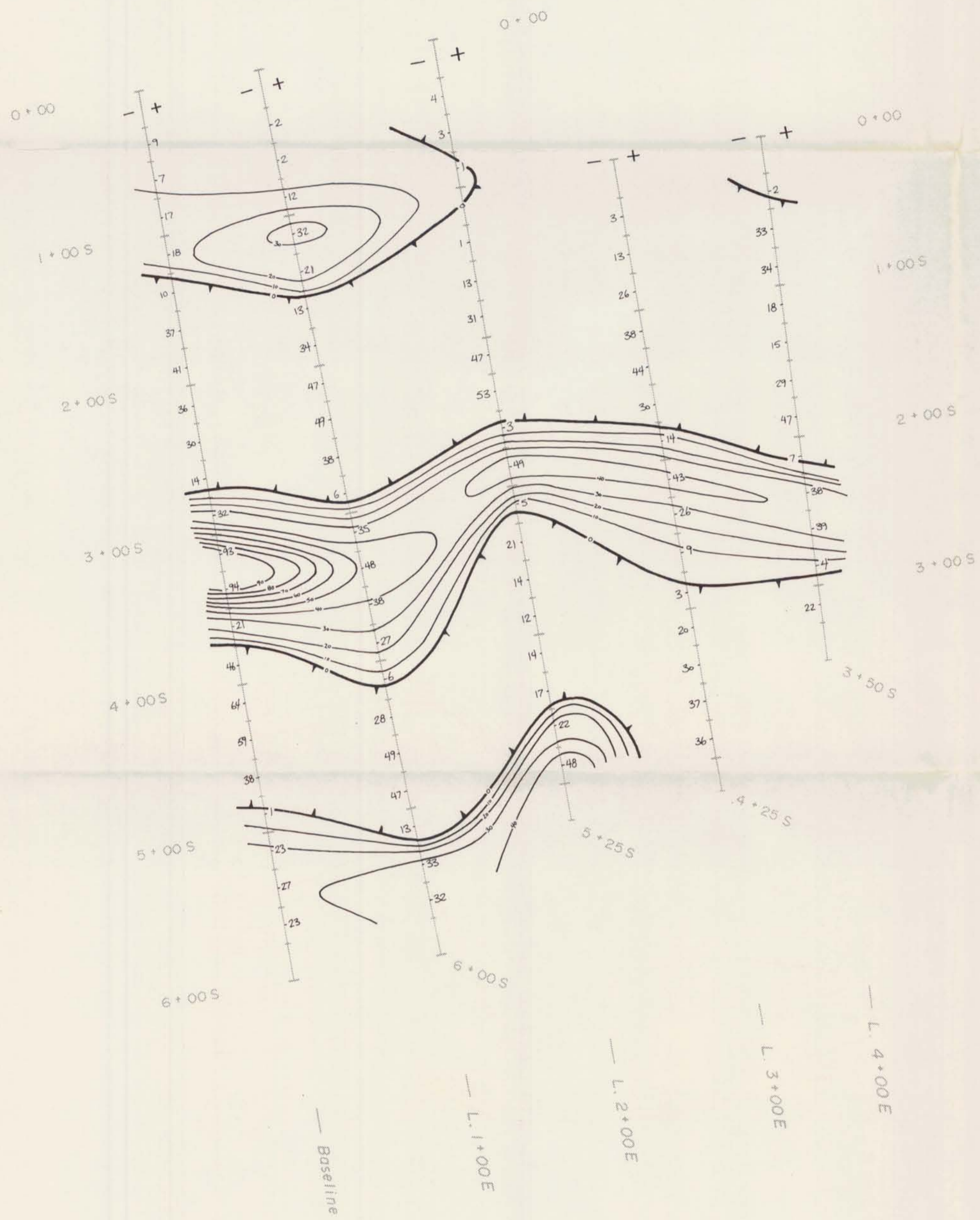
16,725
Part 6 of 8



ARMENO RESOURCES INC.
TRANS ATLANTIC RESOURCES INC.
STANDARD CREEK PROPERTY

Butte - X-Cal Grid
(Aggie Cirque)
VLF - EM 16 SURVEY
In-Phase % & Quadrature Profiles

Azimuth	By: K. K.	Figure:
Geological	W.T.S.: 92-J/10	7-10-1
Incorporated	Date: Feb. '88	



LOCATION MAP

GEOLOGICAL BRANCH
ASSESSMENT REPORT

16,725

Part 6 of 8

Cutler, Maine



ARMENO RESOURCES INC.
TRANS ATLANTIC RESOURCES INC.
STANDARD CREEK PROPERTY

Butte - X-Cal Grid
(Aggie Cirque)
VLF-EM 16 SURVEY
Fraser Filter Contours

Azimuth	By: K.K.	Figure:
Geological	R.T.S.: 92-J/10	7-10-2
Incorporated	Date: Feb. '88	

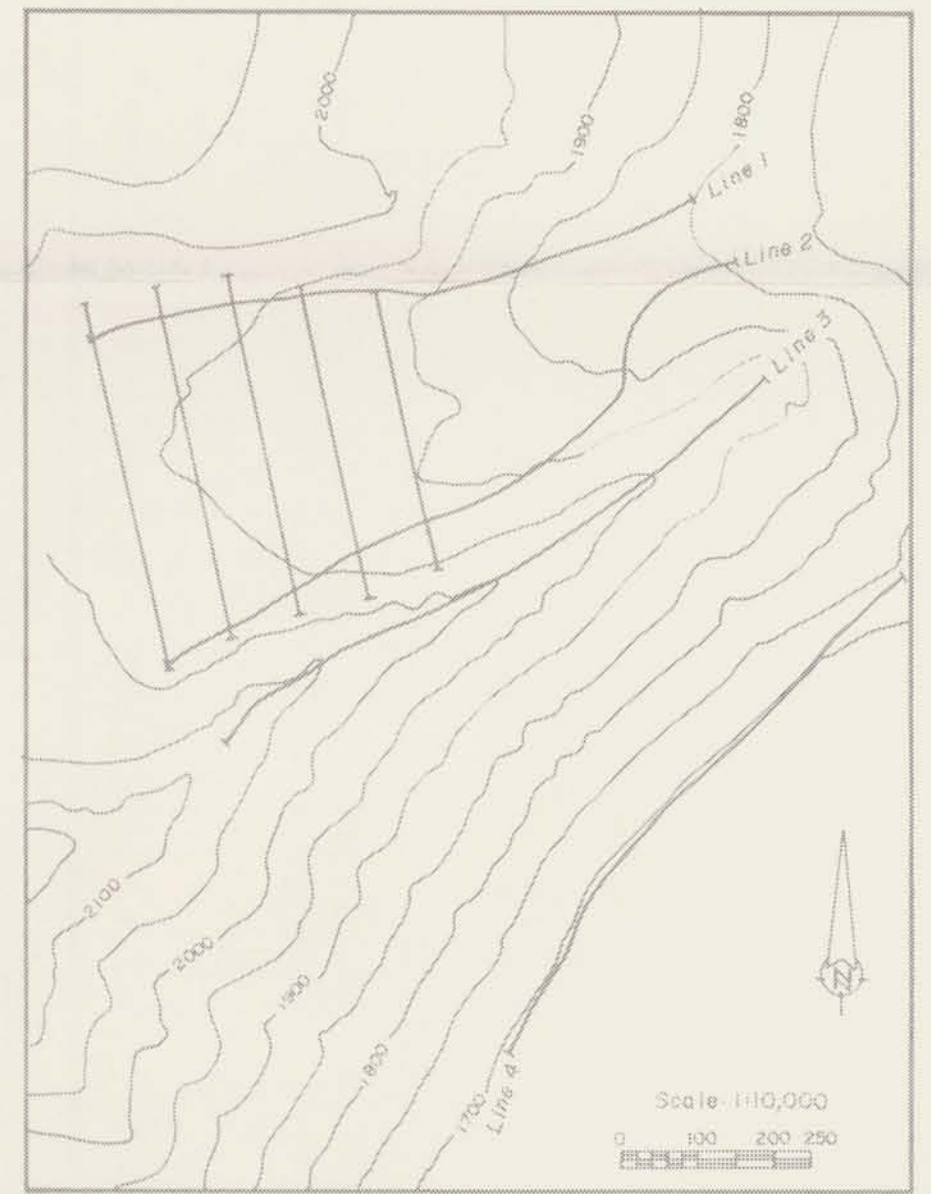
0+00 E 1+00 E 2+00 E 3+00 E 4+00 E 5+00 E 6+00 E 7+00 E 8+00 E 9+00 E

Line 1

Line 2

Line 3

Line 4



LOCATION MAP

10+00 E 11+00 E

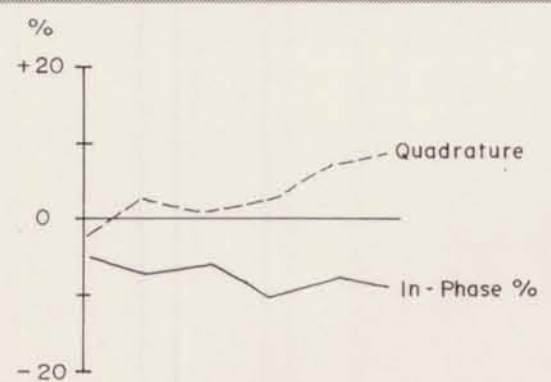


DIRECTIONAL VECTORS INAPPROPRIATE FOR THIS PRESENTATION.
REFER TO GRID POSITION MAP (inset). Tx - Jim Creek, Washington

GEOLOGICAL BRANCH
ASSESSMENT REPORT

16,725

Part 6 of 8



ARMENO RESOURCES INC. TRANS ATLANTIC RESOURCES INC. STANDARD CREEK PROPERTY		
Butte - X-Cal Grid (Aggie Cirque)		
VLF-EM 16 SURVEY : Reccé Lines In-Phase % & Quadrature Profiles		
Azimuth Geological Incorporated	By: T.H.C. N.T.S.: 92-J/10 Date: Feb '88	Figure: 7-10-3