

TECHNICAL REPORT

ON THE

WINDFLOWER PROJECT

MINERAL EXPLORATION INCENTIVE PROGRAM REFERENCE #10962-E43

SITUATED IN THE
REVELSTOKE MINING DIVISION

NTS: 82-K-13/E

LAT. 50 49 N

LONG. 117 39 W

HELD BY:

GRANGES EXPLORATION LTD.

23RD FLOOR
885 WEST GEORGIA STREET
VANCOUVER, BRITISH COLUMBIA
V6C 3E8

GEOLOGICAL BRANCH
ASSOCIATED REPORT

16,753

FILMED

FEBRUARY 19, 1988

G.W. ZBITNOFF (P.Eng.)
(A.L. NAUSS)

TABLE OF CONTENTS

	<u>Page No.</u>
INTRODUCTION	1
LOCATION AND ACCESS	2
TOPOGRAPHY AND VEGETATION	2
GEOLOGY	2
GEOCHEMICAL SAMPLING	3
DIAMOND DRILLING	3
RESULTS	3
AUTHORS QUALIFICATIONS	5

ENCLOSURES

WINDFLOWER PROJECT LOCATION MAP (FIGURE 1)	
WINDFLOWER PROJECT CLAIM MAP (FIGURE 2)	
2 SOIL GEOCHEMISTRY PLANS - GOLD (CONTOURED)	
1 SOIL GEOCHEMISTRY PLAN - GOLD (NOT CONTOURED)	
2 SOIL GEOCHEMISTRY PLANS - LEAD	
2 SOIL GEOCHEMISTRY PLANS - COPPER	
2 SOIL GEOCHEMISTRY PLANS - SILVER	
2 SOIL GEOCHEMISTRY PLANS - ZINC	
PLAN OF DIAMOND DRILL HOLES	
DIAMOND DRILL HOLE LOGS FOR HOLES NO. 69 TO 144	

INTRODUCTION:

The Windflower project consists of the Goldfinch/Independence group of mineral claims which are currently held by Granges Exploration Ltd. under option agreement from Windflower Mining Ltd. The group is comprised of 14 crown granted claims, 3 reverted crown-granted claims and 6 located claims, as follows:

CROWN GRANTED MINERAL CLAIMS

OWNERSHIP

Golden Eagle	L12479	Academy Enterprise Ltd.
Independence	L12480	"
Dorothy	L12481	"
Golden Standard	L12482	"
Vimy Ridge	L12483	"
Walrus	L5653	Windflower Mining Ltd.
Goldfinch	L5654	"
Sea Lion	L5655	"
Red Fox	L5656	"
Ridge	L5657	"
Evening Star	L5658	"
Centre Star	L5659	"
Morning Star	L5660	"
Bonanza	L5661	"

REVERTED CROWN GRANTS

OWNERSHIP

Lost Cup	L1870	Granges Exploration Ltd.
Nina	L4239	"
Phyllis	L3755	"

LOCATED MINERAL CLAIMS

OWNERSHIP

Doc	2102	Windflower Mining Ltd.
Vik	2103	"
Academy 1	1350	Academy Enterprises Ltd.
Academy 2	1351	"
Academy 3	1352	"
Academy 4	1353	"

Granges Exploration Ltd. has a 60% interest in the Windflower property and Windflower Mining Ltd. retains a 40% interest.

LOCATION AND ACCESS:

The claims are located in the Revelstoke Mining Division, British Columbia. The property lies about 4 air kilometers north of Camborne, B.C. and about 35 km southeast of Revelstoke at latitude 50 , 49.5 N and longitude 117 , 39.5 W, on mapsheet 82K/13E of the National Topographic System.

Elevations on the property range from 488 - 1981 m (1600 - 6500 ') above sea level, with the lowest point at the Incomappleaux (Fish) River on the east, to a high at the northwest boundary on the southeast slope on the Camaplix Mountain.

Road access to the property is very good as it is situated within an active logging area, with well-maintained haulage roads and branch roads throughout much of the property.

TOPOGRAPHY AND VEGETATION:

The claims are located in the rugged Selkirk Mountain system. The main showings are located at about elevatin 1040 m on a bench with moderate slopes.

Much of the property consists of heavily timbered and logged-over slopes with some rock bluffs and with more open alpine areas at higher elevations. Most of the rock outcrop is covered by a heavy layer of moss, making prospecting and geological mapping a slow process.

The area has a high snowfall, but due to a southeastern exposure and moderate elevation in the area of the main showings, is usually snowfree from about early May to late October.

GEOLOGY:

The claims are underlain by metamorphic rocks of the early Paleozoic Lardeau group of phyllites and altered greenstone. It includes the Broadview formation that trends in a general northwest direction for 100 miles and is host rock to many prospects and former producing mines. Gold is the principal economic mineral found in quartz veins and altered rock.

GEOCHEMICAL SAMPLING:

A detailed soil sampling program was established during the 1987 field season to explore for new gold occurrences. The program focused on the lineation that hosts the previously known gold mineralization and covered approximately 6 km of strike length. 35.77 km of linecutting was done by Underhill & Underhill of Vancouver, B.C. to establish a grid for the soil sampling program. Anomalous values were followed up with prospecting and mapping.

"B" horizon soil samples were taken where available. Sample depths varied between 5 cm and 30 cm. The samples were analysed by Echo Tech Laboratories of Kamloops, B.C.

ICP analysis was conducted on the samples whereby a .500 gram sample is digested with 3 ml 3-1-2 HCL-HNO₃-H₂O at 95 degrees for one hour and is diluted to 10 ml with water. This leach is partial for Mn, Fe, Ca, P, Cr, Mg, Ba, Ti, B, Al, Na, K, W, Si, Zr, Ce, Sn, Y, Nb and Ta. Au detection limit by ICP is 3 ppm therefore Au analysis is done by AA from 10 gram sample.

Geochemical assaying was done on 5,242 core samples for Au and Ag (g/t) and 3561 soil samples were assayed for Au (ppb), Ag, Cu, Pb, Ar and Zn (ppm).

DIAMOND DRILLING:

During the 1986 field season, Granges Exploration Ltd. carried out a 61 hole diamond drill program on the Windflower project. The main zone structure was traced with diamond drilling over a strike length of 1300 ft. with widths between 6 and 30 feet. The zone had been tested to a vertical depth of 300 feet.

The focus of the 1987 field season was an extensive diamond drill program with the goal of expanding ore reserves and establishing the continuity of the zone below the 300 foot level.

From June 14, 1987 to November 17, 1987, a total of 76 diamond drill holes were drilled on the property for a total of 9,587.78 meters (31,455.97 feet). Diamond drilling was done by Quest Drilling of Vancouver, B.C., M & B Drilling of Powell River, B.C. and Kootney Exploration Drilling Ltd. of Rossland, B.C.

The 1987 exploration program was managed by Pat Deveaux, consulting geologist for Granges Exploration Ltd. Diamond drilling was supervised by B. Ferreira, W. Stoeferau and B. Gaboury, geologists for Granges Exploration Ltd.


RESULTS:

The soil sampling program revealed numerous geochemical anomalies, some of which were followed up by prospecting. This resulted in

the discovery of a new gold bearing quartz carbonate vein along Scott Creek, some 600 meters north of the main zone. Diamond drilling extended the main zone or Dorothy vein mineralized structure an additional 150 meters to the north with minor addition to ore reserves. A new east lense bearing gold values was indicated in several holes at depth.

This mineralization will be further investigated by an exploration decline during the winter of 1988.

George



A circular professional seal for a geologist. The outer ring contains the text "PROFESSIONAL" at the top, "PROVINCE OF" in the middle, and "ENGINEER" at the bottom. The inner circle contains the name "GEORGE" in the center, "Lic. No." above it, and "COLUMBIA" below it. The seal is stamped over a handwritten signature that appears to be "George".

STATEMENT OF QUALIFICATIONS
GEORGE W. ZBITNOFF
5160 CLIFF PLACE
DELTA, B.C.

Name: Zbitnoff, George William

Birth Date: August 15, 1938

Birthplace: Saskatoon, Saskatchewan

Graduated with Grade 12 matriculation from
Blaine Lake High School in 1955.

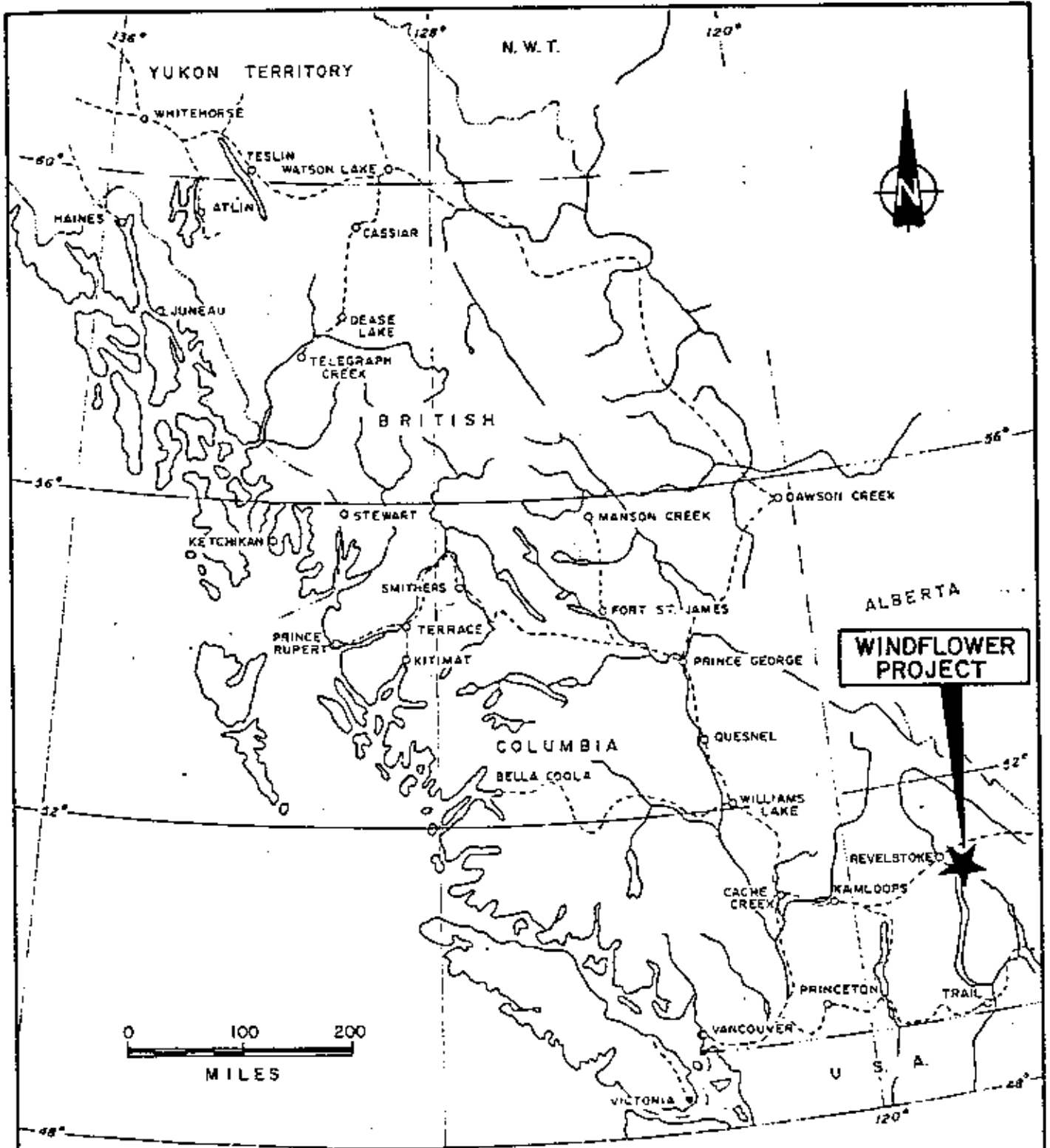
Graduated from University of Saskatchewan with a
B.A. (Geology and chemistry majors) in 1963.

Professional

- Associations:
- Member of the Association of Professional Engineers of the Province of Manitoba.
 - Member of the Association of Professional Engineers of the Province of British Columbia since 1973.
 - Member of the Canadian Institute of Mining and Metallurgy.

- Experience:
- Pre-graduation experience in geology with the Department of Mineral Resources of Saskatchewan.
 - May 1962 - Two and one half years, field geologist with Hudson Bay Exploration and Development, Flin Flon area.
 - January 1965 - Six years, field and resident geologist with Noranda Exploration Ltd., Flin Flon area.
 - February 1971 - Twelve and one half years, Assistant Manager, Granges Exploration Aktiebolag in Vancouver, B.C.
 - November 1983 to present - Vice President Exploration, Granges Exploration Ltd. in Vancouver, B.C.
 - Active geological experience in all provinces of Canada and parts of the United States and Mexico.
 - Participated in the discovery of Trout Lake Mine.





GRANGES
EXPLORATION LTD.

WINDFLOWER PROJECT

LOCATION MAP

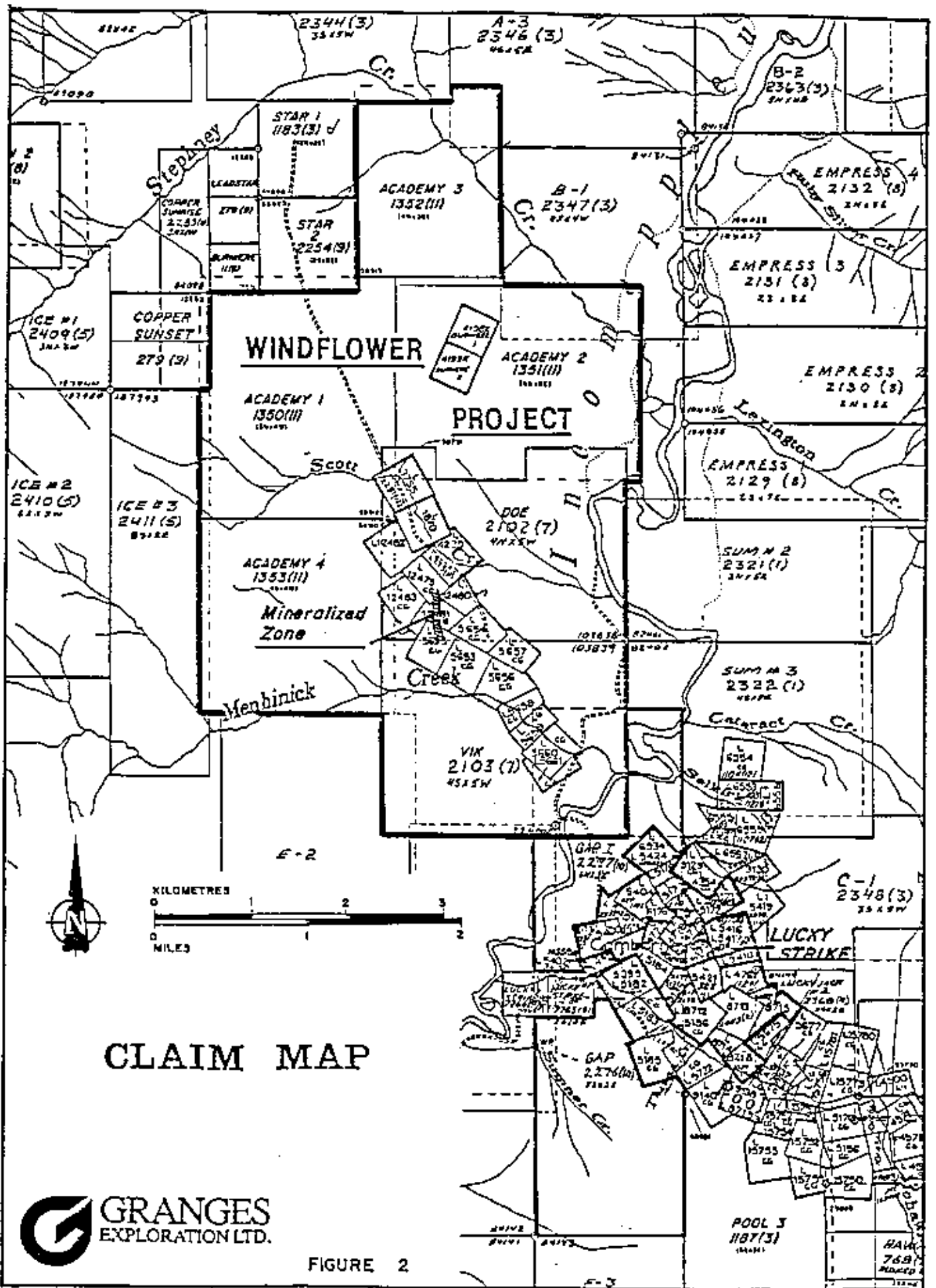
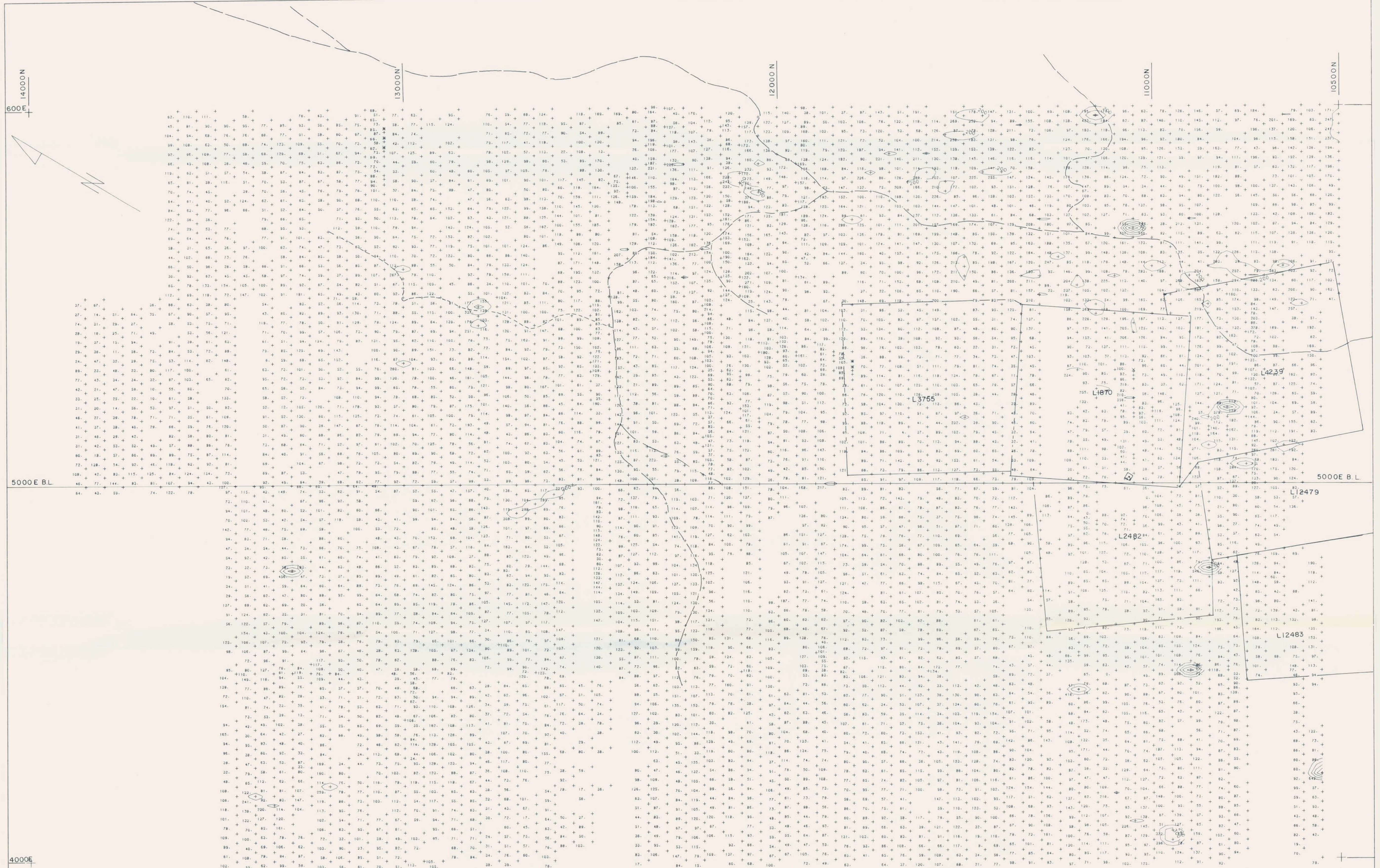


FIGURE 2



**GEOLOGICAL BRANCH
ASSESSMENT REPORT**

16,753

0.0 100.0 200.0 400.0 METRIC

SURVEYED BY: MAP NO. 224-GS-5 DATE SAMPLED: JUNE - NOV., 1987	DRAWN BY: CGU DATE: 02/3/88	GRANGES EXPLORATION LTD. VANCOUVER OFFICE	ZINC PPM SOIL GEOCHEM WINDFLOWER OPTION TROUT LAKE AREA REVELSTOKE MINING DIVISION, B. C.	SCALE: 1:5000 PROJECT NO.: 224 N.T.S. NO.: 82K 13E
---	--------------------------------	--	---	--

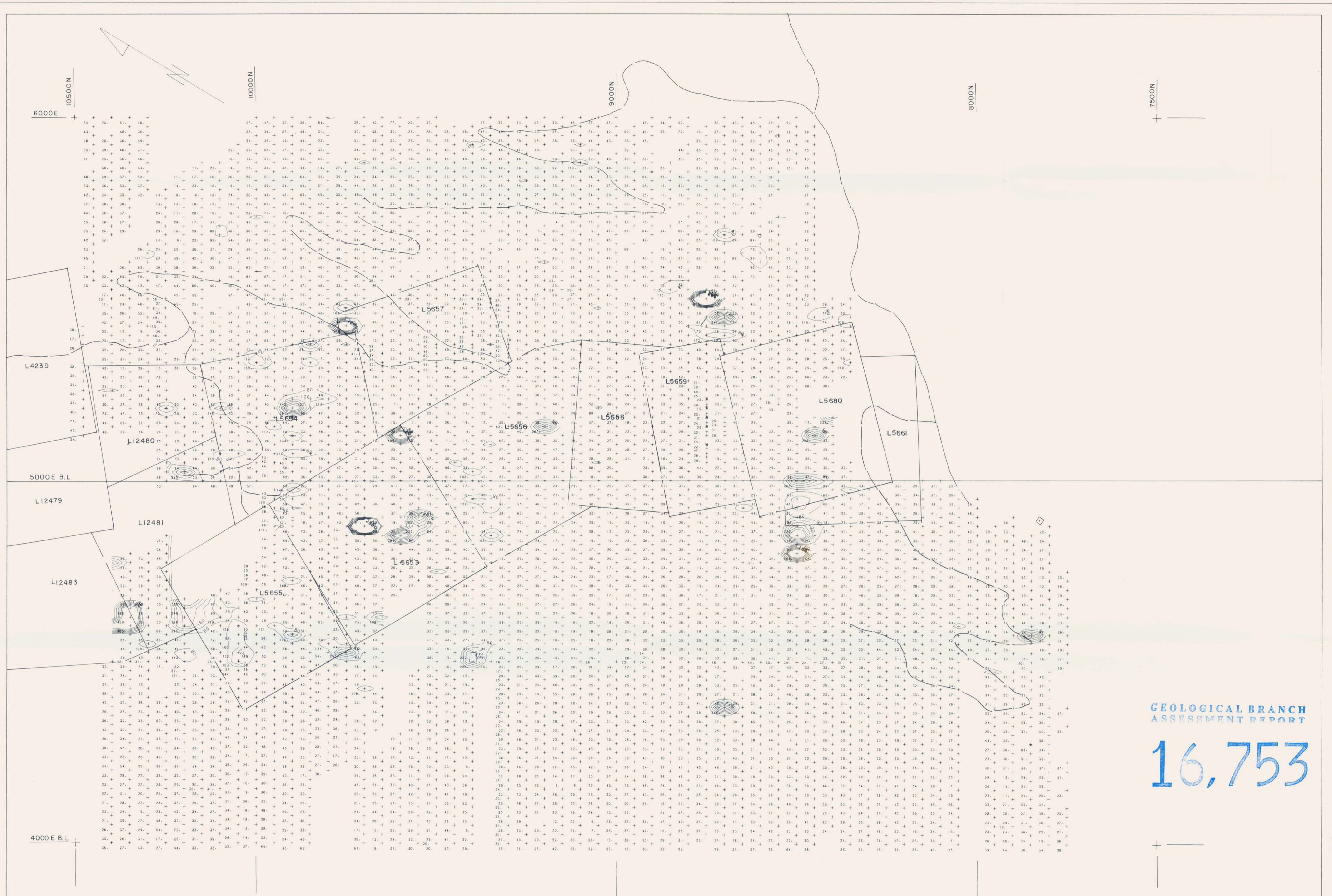


GEOLOGICAL BRANCH
ASSESSMENT REPORT

16,753

0.0 100.0 200.0 400.0 METRIC

SURVEYED BY:	DRAWN BY: CGU	GRANGES EXPLORATION LTD. VANCOUVER OFFICE	ZINC PPM	SCALE 1:5000
MAP NO. 224-GS-10	DATE: 02/3/88		SOIL GEOCHEM	PROJECT NO.: 224
DATE SAMPLED: JUNE - NOV., 1987			WINDFLOWER OPTION	N.T.S. NO.: 82K 13E
			TROUT LAKE AREA	
			REVELSTOCK MINING DIVISION, B. C.	

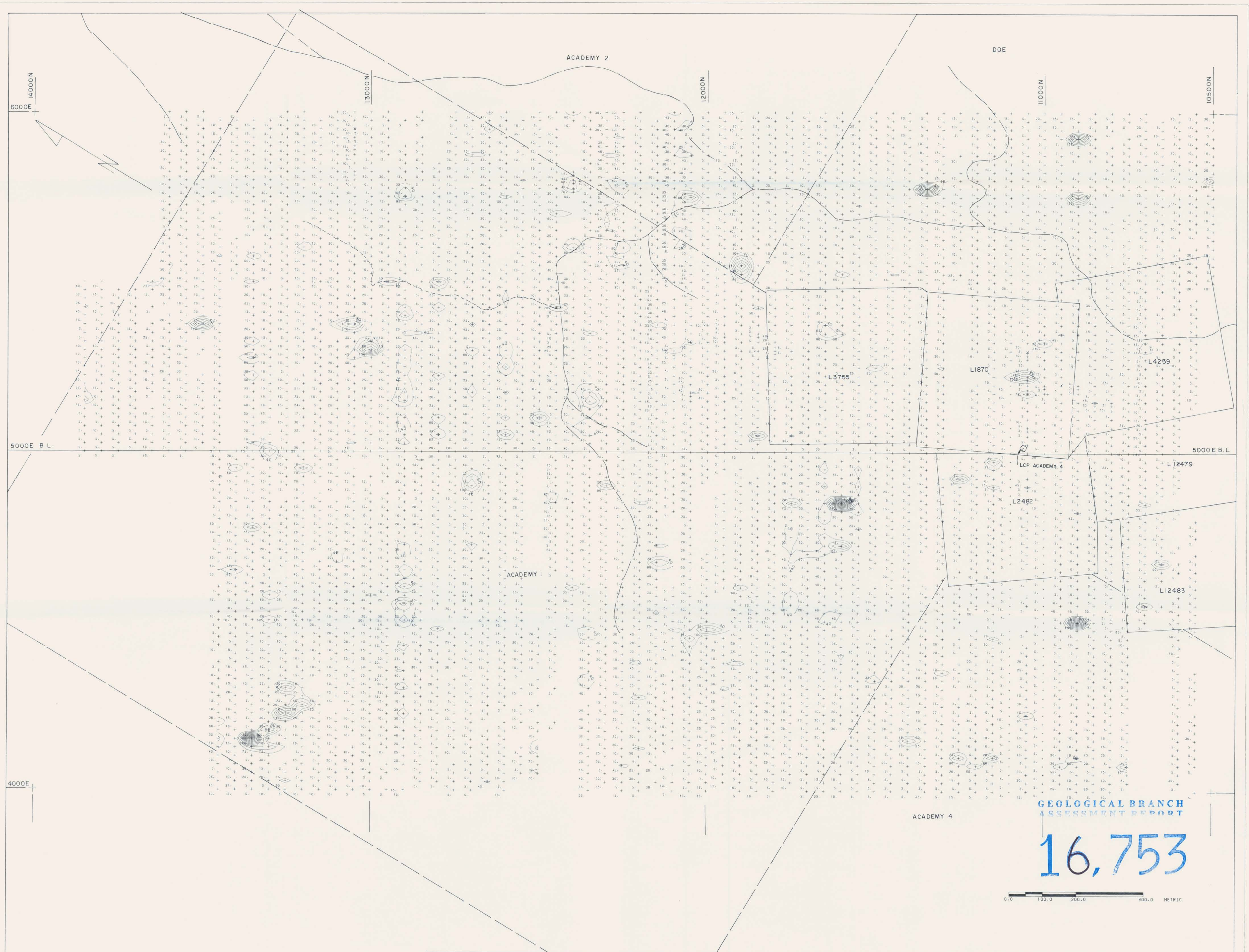


GEOLOGICAL BRANCH
ASSESSMENT REPORT

16,753

0.0 100.0 200.0 400.0 METRIC

SURVEYED BY:	DRAWN BY: CGU	GRANGES EXPLORATION LTD. VANCOUVER OFFICE	LEAD PPM	SCALE: 1:5000
MAP NO.: 224-GS-9	DATE: 02/3/88		SOIL GEOCHEM	PROJECT NO.: 224
DATE SAMPLED: JUNE - NOV., 1987			TROUT LAKE AREA	N.T.S. NO.: 82K 13E
			REVELSTOCK MINING DIVISION, B. C.	



GEOLOGICAL BRANCH
ASSESSMENT REPORT

16,753

0.0 100.0 200.0 400.0 METRIC

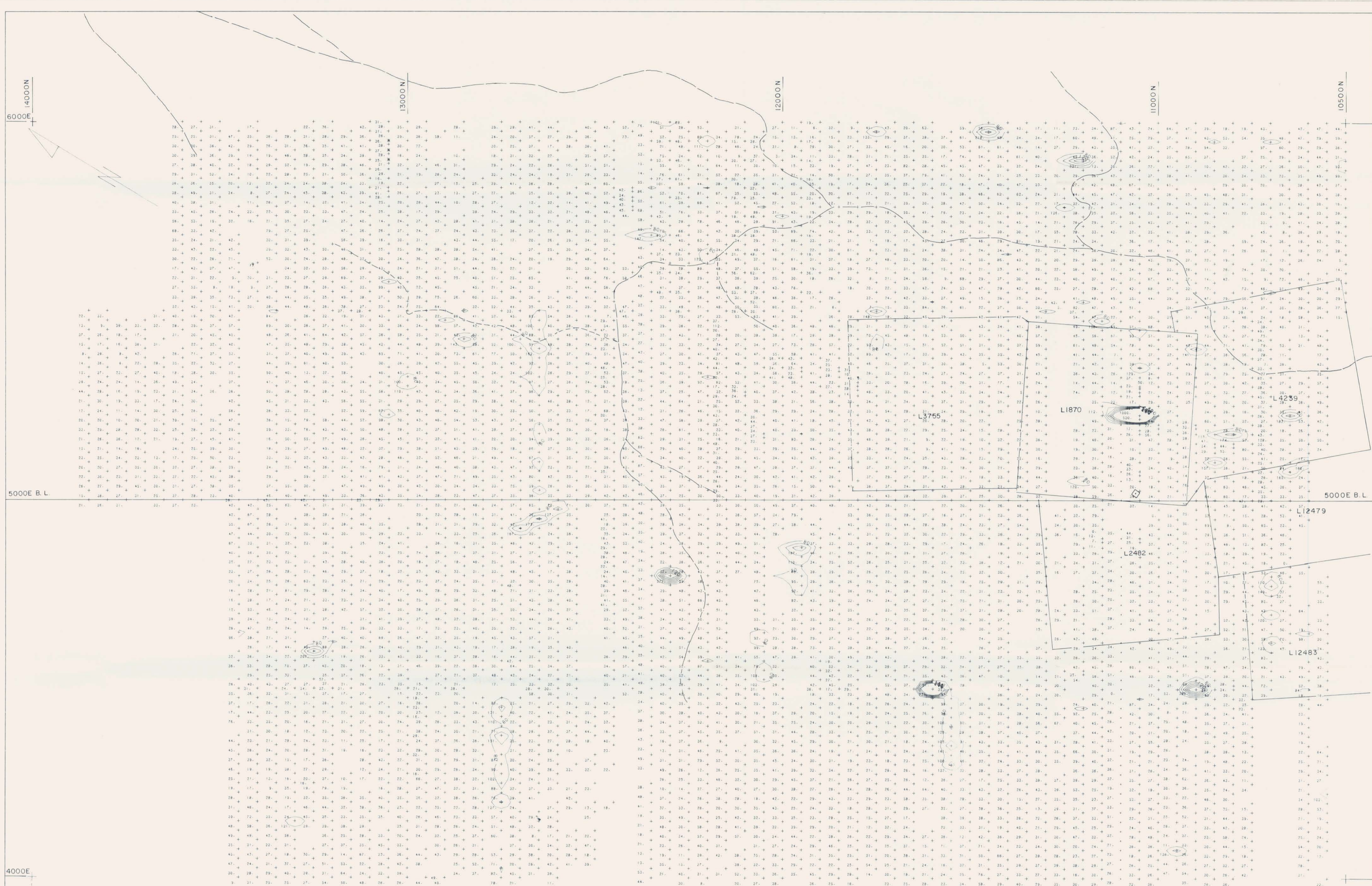
SURVEYED BY:
MAP NO. 224-GS-1
DATE SAMPLED: JUNE - NOV., 1987

DRAWN BY: CGU
DATE: 02/3/88
TOTAL SAMPLES: 4818

GRANGES EXPLORATION LTD.
VANCOUVER OFFICE

GOLD PPB
SOIL GOLD GEOCHEM
WINDFLOWER OPTION
TROUT LAKE AREA
REVELSTOKE MINING DIVISION, B. C.

SCALE: 1:5000
PROJECT NO.: 224
N.T.S. NO.: 82K 13E



GEOLOGICAL BRANCH
ASSESSMENT REPORT

16,753

0.0 100.0 200.0 400.0 METRIC

SURVEYED BY:
MAP NO. 224-GS-4
DATE SAMPLED: JUNE - NOV., 1987

DRAWN BY: CGU
DATE: 02/3/88

GRANGES EXPLORATION LTD.
VANCOUVER OFFICE

LEAD PPM
SOIL GEOCHEM
WINDFLOWER OPTION
TROUT LAKE AREA
REVELSTOKE MINING DIVISION, B. C.

SCALE 1:5000
PROJECT NO.: 224
N.T.S. NO.: B2K 13E



GEOLOGICAL BRANCH
ASSESSMENT REPORT

16,753



SURVEYED BY:	DRAWN BY: CGU	GRANGES EXPLORATION LTD. VANCOUVER OFFICE	GOLD PPB (NOT CONTOURED)	SCALE: 1:5000
MAP NO. 224-GS-6A	DATE: 2/3/88		SOIL GEOCHEM	PROJECT NO.: 224
DATE SAMPLED: JUNE -NOV. 1987			WINDFLOWER OPTION TROUT LAKE AREA REVELSTOCK MINING DIVISION, B.C.	N.T.S. NO.: 82K13E



GEOLOGICAL BRANCH
ASSESSMENT REPORT

16,753



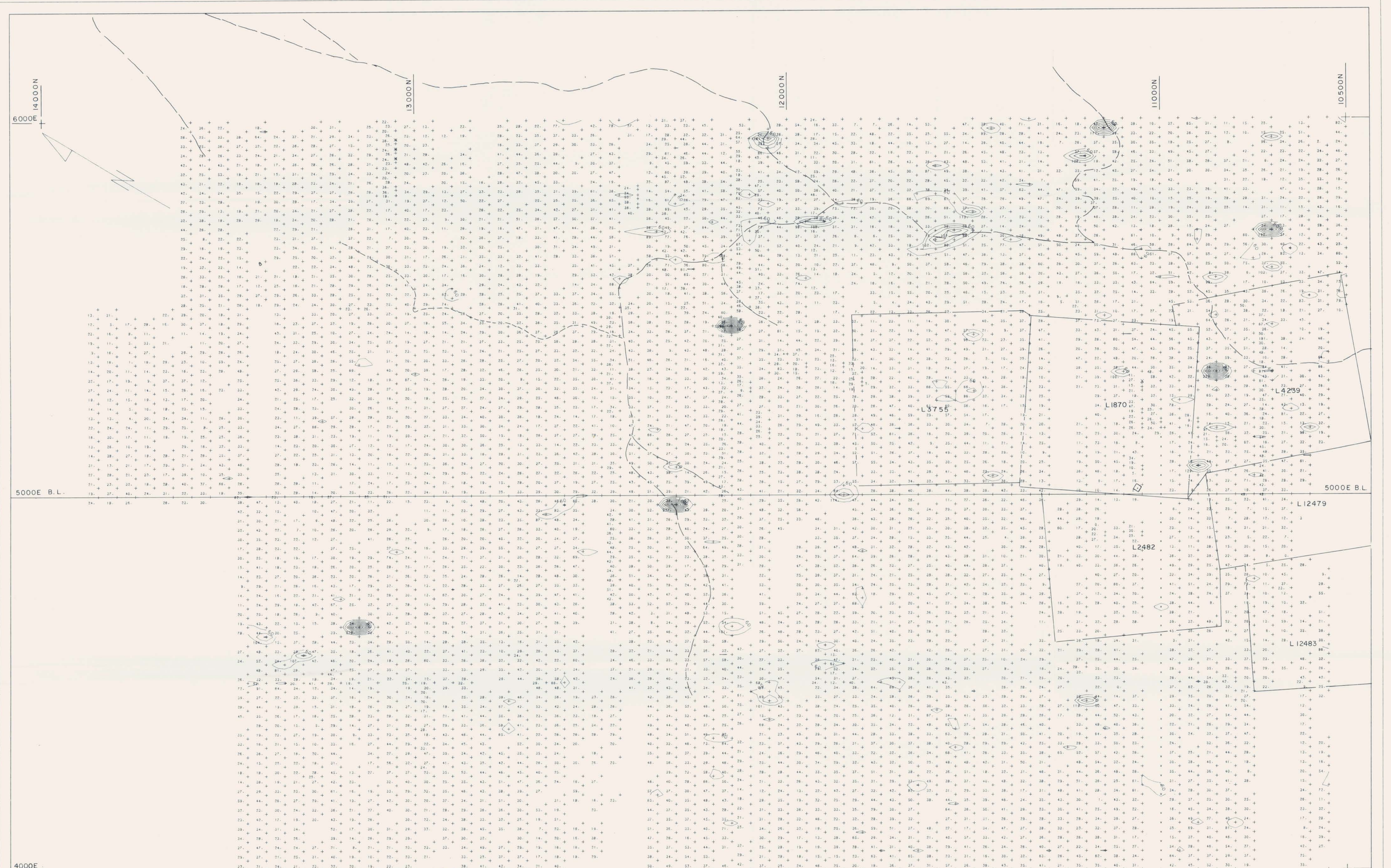
SURVEYED BY:
MAP NO. 224-GS-8
DATE SAMPLED: JUNE - NOV., 1987

DRAWN BY: CGU
DATE: 02/3/88

GRANGES EXPLORATION LTD.
VANCOUVER OFFICE

COPPER PPM
SOIL BIOCHEM
WINDFLOWER OPTION
TROUT LAKE AREA
REVELSTOKE MINING DIVISION, B. C.

SCALE: 1:5000
PROJECT NO.: 224
N.T.S. NO.: B2K 13E



GEOLOGICAL BRANCH
ASSESSMENT REPORT

16,753

0.0 100.0 200.0 400.0 METRIC

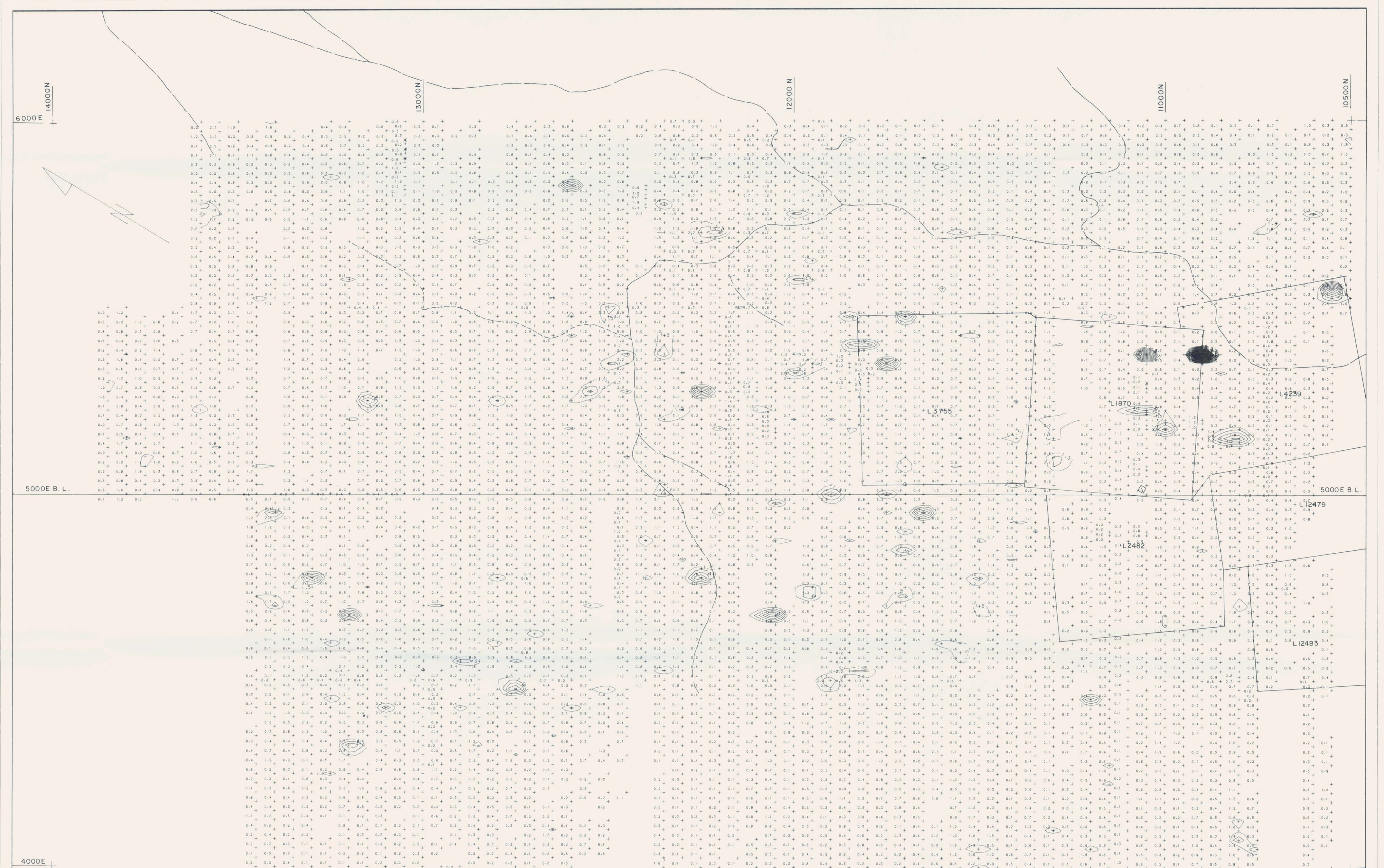
SURVEYED BY:	DRAWN BY: CGU	GRANGES EXPLORATION LTD. VANCOUVER OFFICE	COPPER PPM	SCALE: 1:5000
MAP NO. 224-GS-3	DATE: 02/3/88		SOIL GEOCHEM	PROJECT NO.: 224
DATE SAMPLED: JUNE - NOV., 1987			WINDFLOW OPTION TROUT LAKE AREA	N.T.S. NO.: 82K 13E
			REVELSTOKE MINING DIVISION, B. C.	



GEOLOGICAL BRANCH
ASSESSMENT REPORT
16,753

0.0 100.0 200.0 400.0 METRIC

SURVEYED BY:	DRAWN BY: CGU	GRANGES EXPLORATION LTD. VANCOUVER OFFICE	SILVER PPM	SCALE: 1:5000
MAP NO.: 224-GS-7	DATE: 02/3/88		SOIL GEOCHEM	PROJECT NO.: 224
DATE SAMPLED: JUNE - NOV., 1987			WINDFLOWER OPTION TROUT LAKE AREA	N.T.S. NO.: 82K 13E
			REVELSTOKE MINING DIVISION, B. C.	



GEOLOGICAL BRANCH
ASSESSMENT REPORT

16,753

0.0 100.0 200.0 400.0 METRIC

SURVEYED BY:	DRAWN BY: CGU	GRANGES EXPLORATION LTD. VANCOUVER OFFICE	SILVER PPM	SCALE: 1:5000
MAP NO. 224-GS-2	DATE: 02/3/88		SOIL GEOCHEM	PROJECT NO.: 224
DATE SAMPLED: JUNE - NOV., 1987			WINDFLOWER OPTION TROUT LAKE AREA	N.T.S. NO.: 82K 13E
			REVELSTOCK MINING DIVISION, B. C.	