

**EUREKA RESOURCES, INC.**

FILMED

GEOLOGICAL BRANCH  
ASSESSMENT REPORT

16,765

Part 2 of 3

---

**FRASERGOLD PROPERTY**

**CARIBOO MINING DIVISION, B.C.**

---

**RESULTS OF 1987 EXPLORATION  
PROGRAM**

---

**NOVEMBER 1987**

VOLUME 2

CAMPBELL & ASSOCIATES  
GEOLOGICAL CONSULTANTS



REPORT ON THE GEOLOGY AND RESULTS  
OF THE 1987 EXPLORATION  
ON THE FRASERGOLD PROPERTY

MacKay River Area  
Cariboo Mining Division, British Columbia  
N.T.S. Map Area 93A/7E  
Latitude 52° 19'N    Longitude 120° 37'W

for

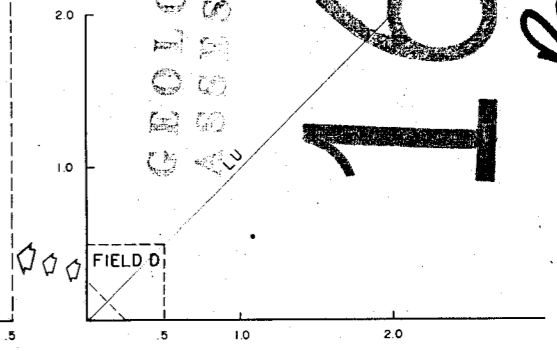
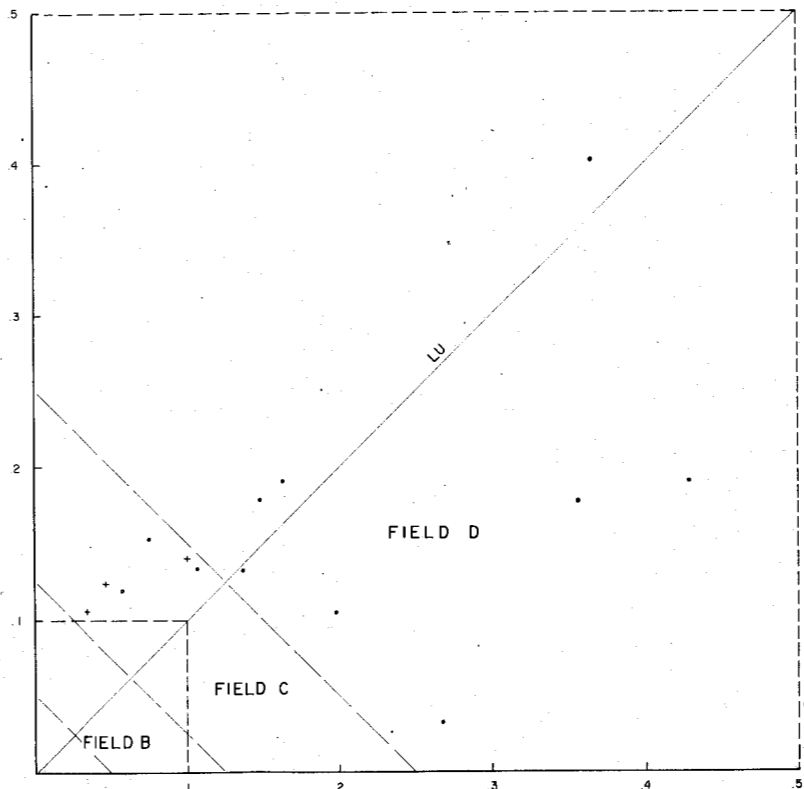
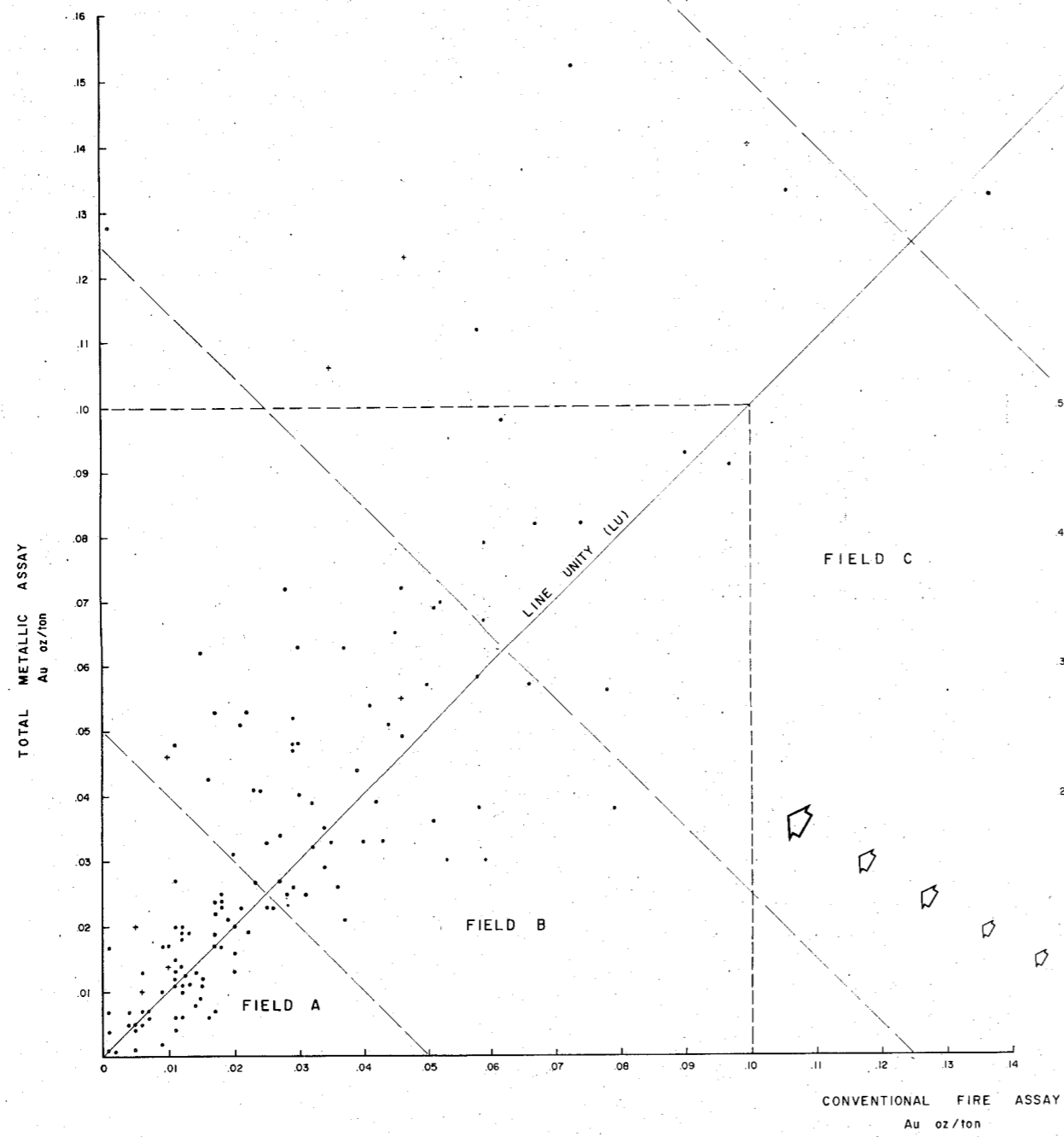
EUREKA RESOURCES, INC.  
837 East Cordova Street  
Vancouver, B.C.  
V6A 3R2

by

K.V. Campbell, Ph.D.  
B.E. MacKean, M.Sc.  
D.A. Leishman, B.Sc.

November, 1987

VOLUME 2



**Legend**  
 • 1987 SAMPLES  
 + 1986 SAMPLES

GEOLOGICAL BRANCH  
 ASSESSMENT REPORT

16,765

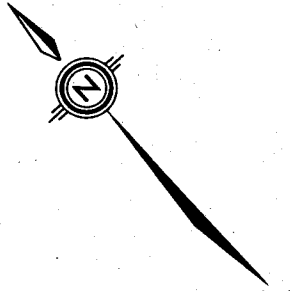
Part 2 of 3

<b>EUREKA RESOURCES, INC.</b> <b>FRASERGOLD PROJECT</b>		
<b>COMPARISON OF          TOTAL METALLIC ASSAYS AND          CONVENTIONAL FIRE ASSAYS.</b>		
DATE:	SCALE: as shown	Figure:
	N.T.S. 93 A/7	13
CAMPBELL & ASSOCIATES		

MINERAL BRANCH  
TECHNICAL REPORT

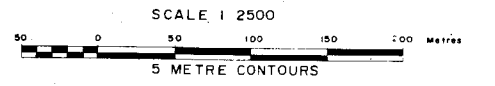
Part 2 of 3

16,765



LEGEND

- DRILL HOLE WITH MINERALIZATION  
(oz Au/ton) PROJECTED TO SURFACE.
- > .05 oz Au/ton  
ZONE OF MINERALIZATION  
- .02 to .050 oz Au/ton
- xx HIGH GRADE ASSAY (> .10 oz Au/ton)  
IN DRILL HOLE
- FOLD ZONE
- V.G. VISIBLE GOLD IN SURFACE OUTCROP
- SIGNIFICANT TRENCH SAMPLES



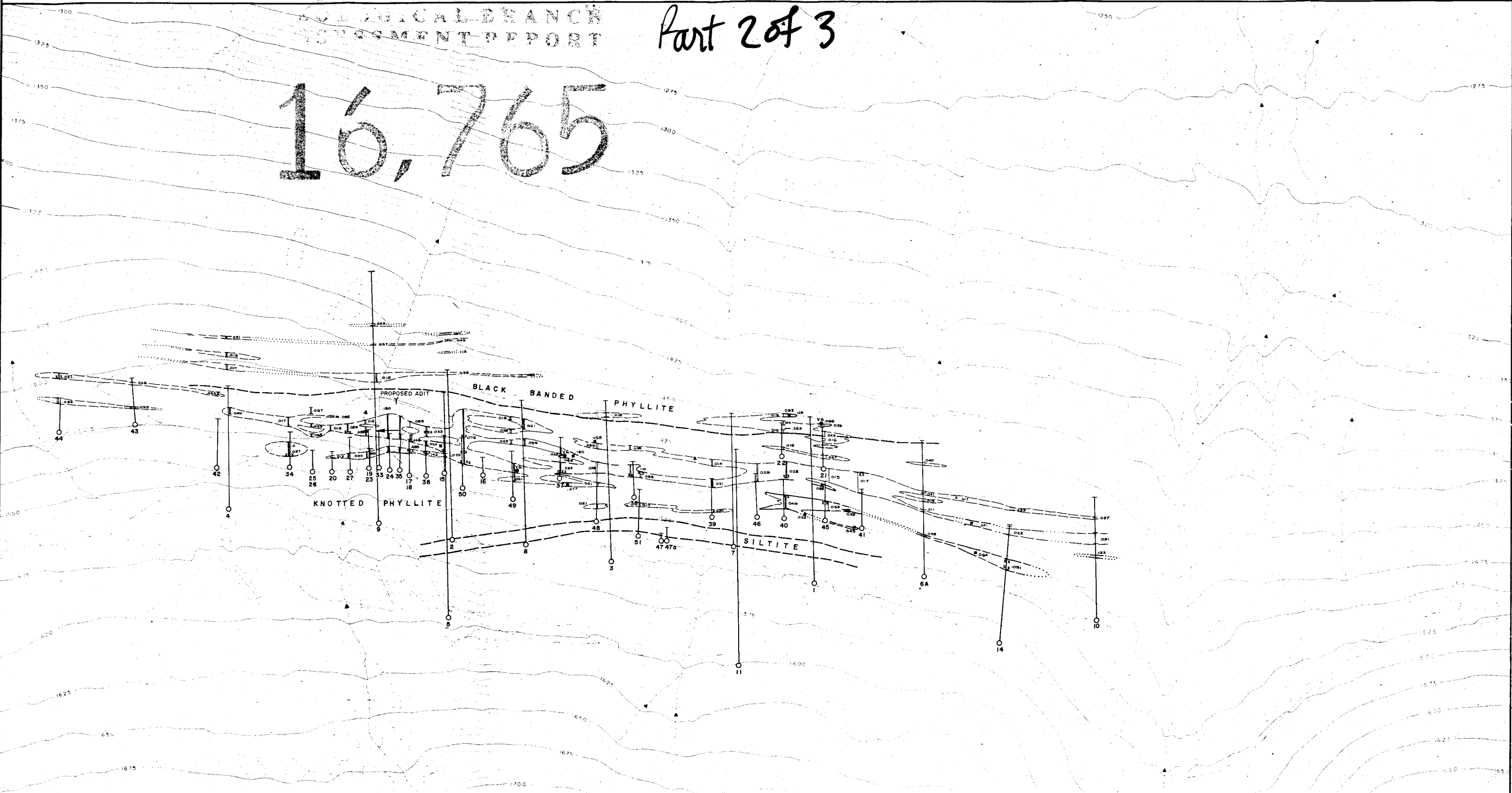
EUREKA RESOURCES INC.  
FRASERGOLD PROJECT

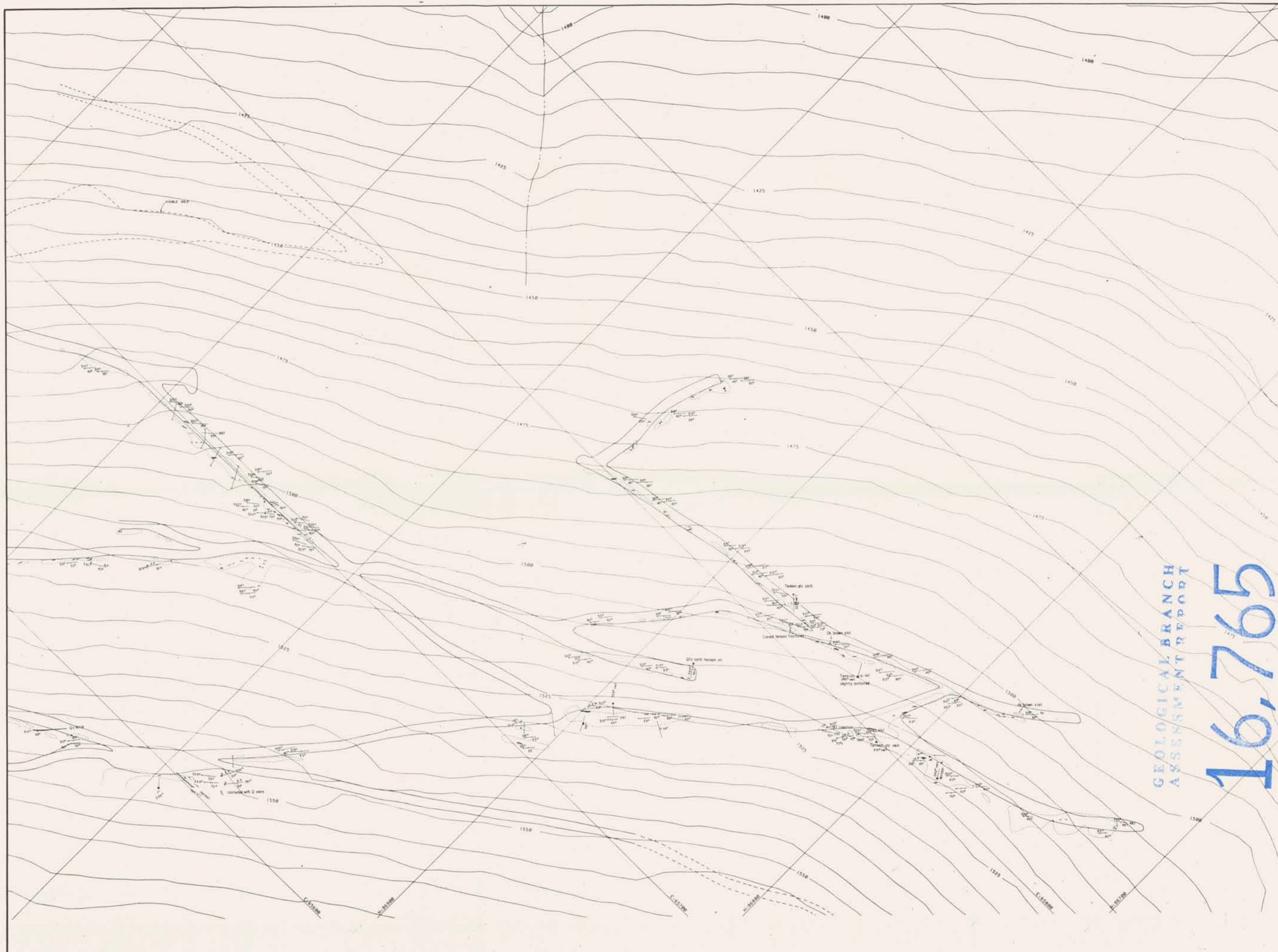
COMPILATION

PLAN No	DRAWN B. M.	DATE NOV, 1987	FIGURE 15
REVISED		NTS 93 A/7	

K. V. CAMPBELL & ASSOCIATES LTD.

MAP BY: EAGLE MAPPING SERVICE, LTD.  
FROM PHOTOGRAPHY TAKEN 1984  
PROJECT NO. 93 A/7  
(WHERE APPLICABLE)





MAGNETIC DECLINATION 21°W  
 GRID NORTH 501°41' 45W

LEGEND - GEOLOGY

- K1 KNOTTED PHYLLITE, Near black knotted phyllite, carbonaceous phyllite
- S1 SILICEOUS SEDIMENTS, Minor siltystone & calcareous siltstone
- B1 BLACK BANDED PHYLLITE, Near calcareous phyllite
- QUARTZ VEIN ATTITUDE
- S<sub>1</sub> SEDIMENTARY BEDDING
- S<sub>1</sub> 10° FOLIATION
- S<sub>2</sub> 24° FOLIATION
- FOLIATION UNDIFFERENTIATED
- FOLDING, AXIAL PLANE ATTITUDE
- FOLDING, PLUNING AXIS
- LINEATION
- JOINTING
- JOINTING, QUARTZ/CARBONATE FILLED
- LOCAL SHEARING
- LOCAL SHEARING, SENSE OF MOVEMENT
- QUARTZ LENSES OR PODS
- QUARTZ VEIN - 40 cm wide
- OUTCROP



GEOLOGICAL BRANCH  
ASSESSMENT REPORT

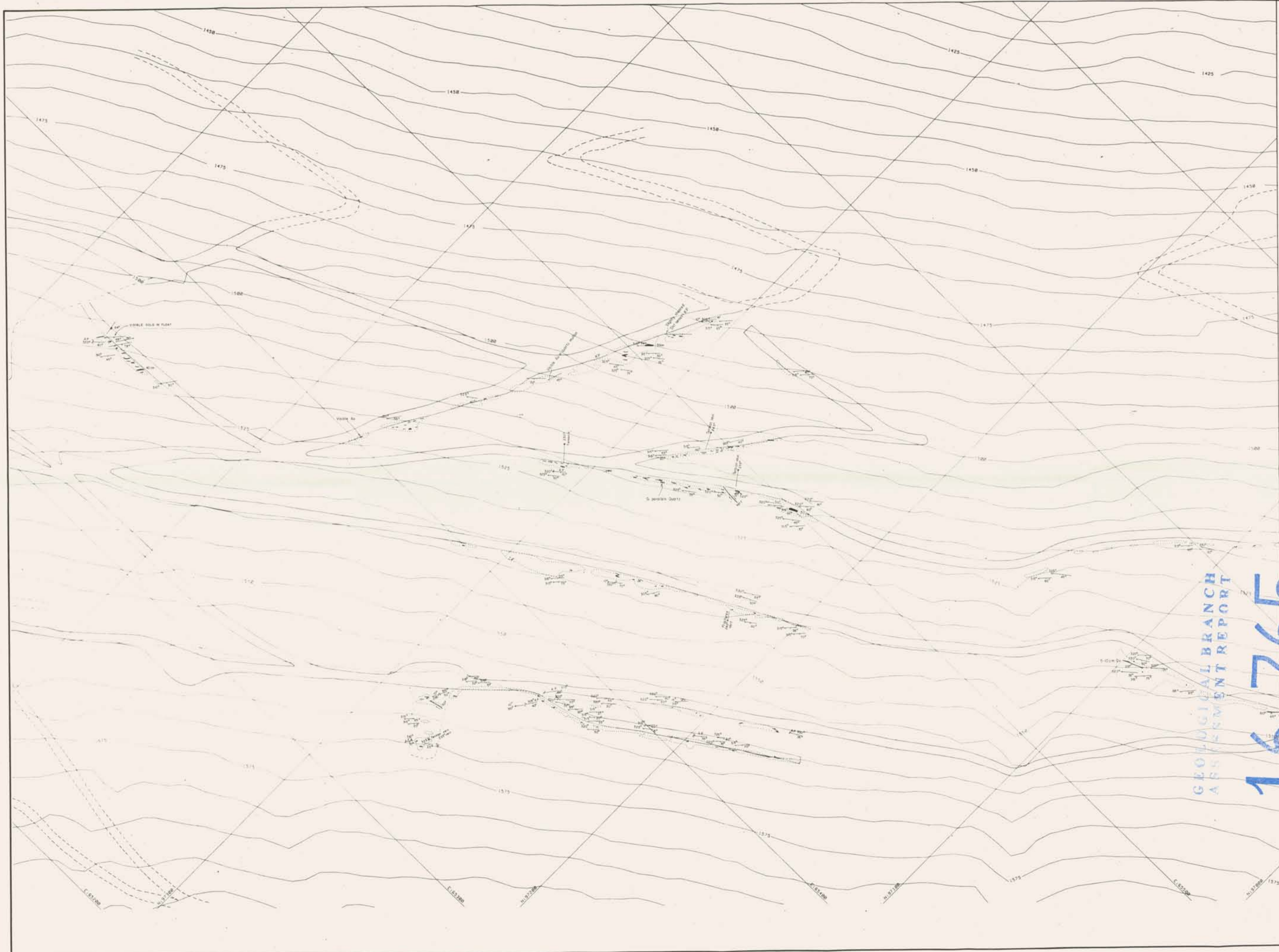
16,765

Part 2 of 3

EUREKA RESOURCES, INC.  
FRASERGOLD PROJECT

SHEET 2  
GEOLOGY

DATE: Nov 1987 SCALE: 1:6000 / 1:2000 Figure  
 N.T.S. 83 A/7 CAMPBELL & ASSOCIATES 60



MAGNETIC DECLINATION: 21° N  
 GRID NORTH: 00° 44' 00" W

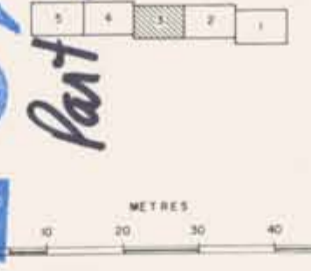
LEGEND - GEOLOGY

- KP KNOTTED PHYLLITE, Minor black carbonaceous phyllite, carbonaceous phyllite
- SD SILICEOUS SEDIMENTS, Minor chert & calcareous siltstone
- BP BLACK-BANDED PHYLLITE, Minor carbonaceous phyllite
- QUARTZ VEIN ATTITUDE
- SEDIMENTARY BEDDING
- S 1st FOLIATION
- S<sub>2</sub> 2nd FOLIATION
- FOLIATION, UNDIFFERENTIATED
- FOLDING, AXIAL PLANE ATTITUDE
- FOLDING, PLUNGING AXIS
- LINEATION
- JOINTING
- JOINTING, QUARTZ/CARBONATE FILLED
- LOCAL SHEARING
- LOCAL SHEARING, SENSE OF MOVEMENT
- QUARTZ LENSES OR POOLS
- QUARTZ VEIN - 40 cm wide
- OUTCROP

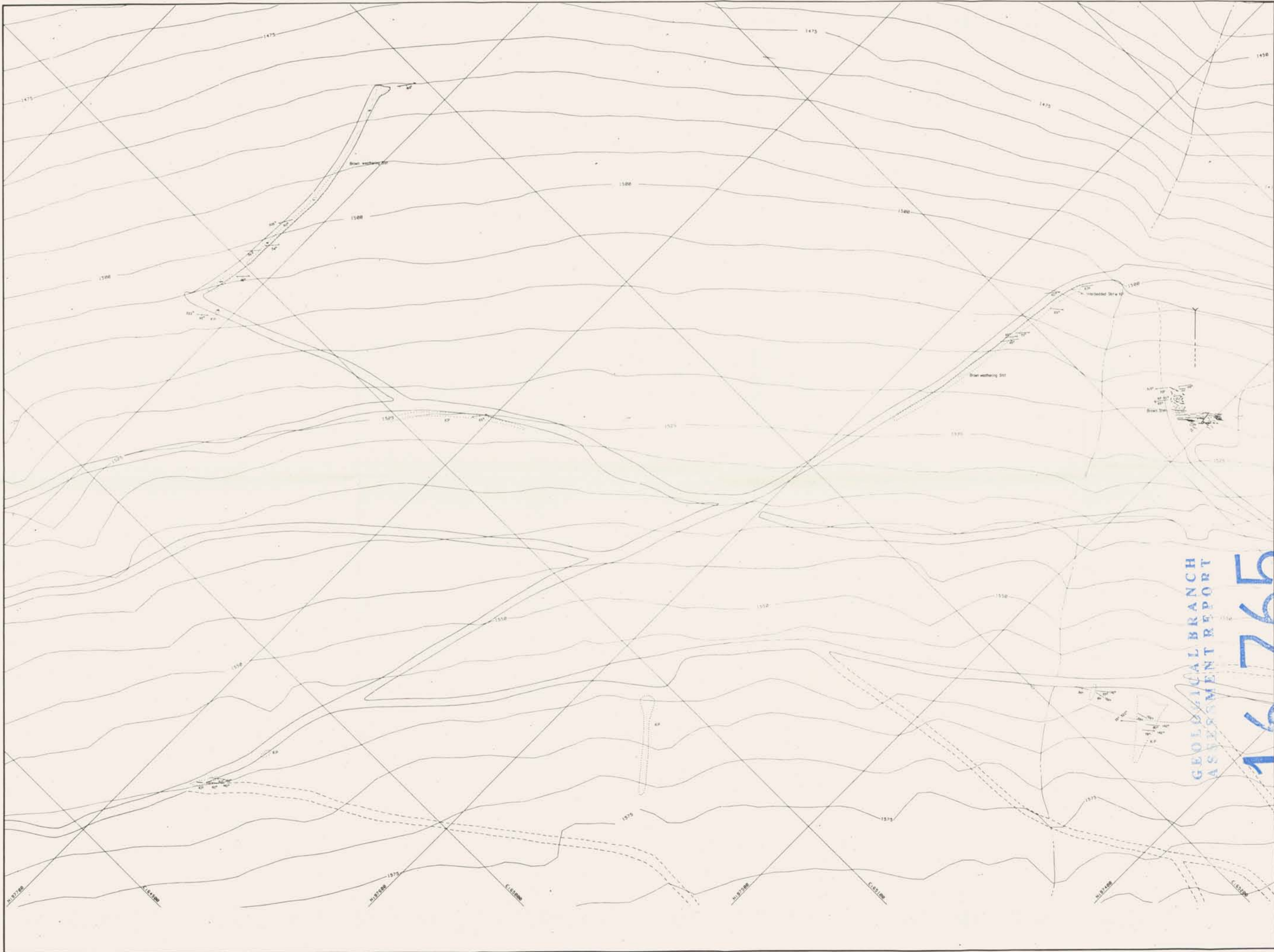
GEOLOGICAL BRANCH  
 ASSESSMENT REPORT

16765

Part 2 of 3



EUREKA RESOURCES, INC.		
FRASERGOLD PROJECT		
SHEET 3		
GEOLOGY		
DATE: Nov 1987	SCALE: 4000/1000	Figure
CAMPBELL & ASSOCIATES	N.T.S. 33 A17	6 b



MAGNETIC DECLINATION: 21 1/2° E  
 GRID NORTH: 60° 47' 00" W

**LEGEND - GEOLOGY**

- KNOTTED PHYLLITE. Minor black and/or grey phyllite, calcareous phyllite
- SILICEOUS SEDIMENTS. Minor siltstone & calcareous siltstone
- BLACK BANDED PHYLLITE. Minor calcareous phyllite
- QUARTZ VEIN ATTITUDE
- S1 SEDIMENTARY BEDDING
- S1 FOLIATION
- S2 FOLIATION
- S3 FOLIATION, UNDIFFERENTIATED
- FOLDING, AXIAL PLANE ATTITUDE
- FOLDING, PLUNGING AXIS
- LINEATION
- JOINTING
- JOINTING, QUARTZ/CARBONATE FILLED
- LOCAL SHEARING
- LOCAL SHEARING, SENSE OF MOVEMENT
- QUARTZ LENSES OR POOLS
- QUARTZ VEIN - 40 cm wide
- OUTCROP
- PROPOSED ADIT - 1987

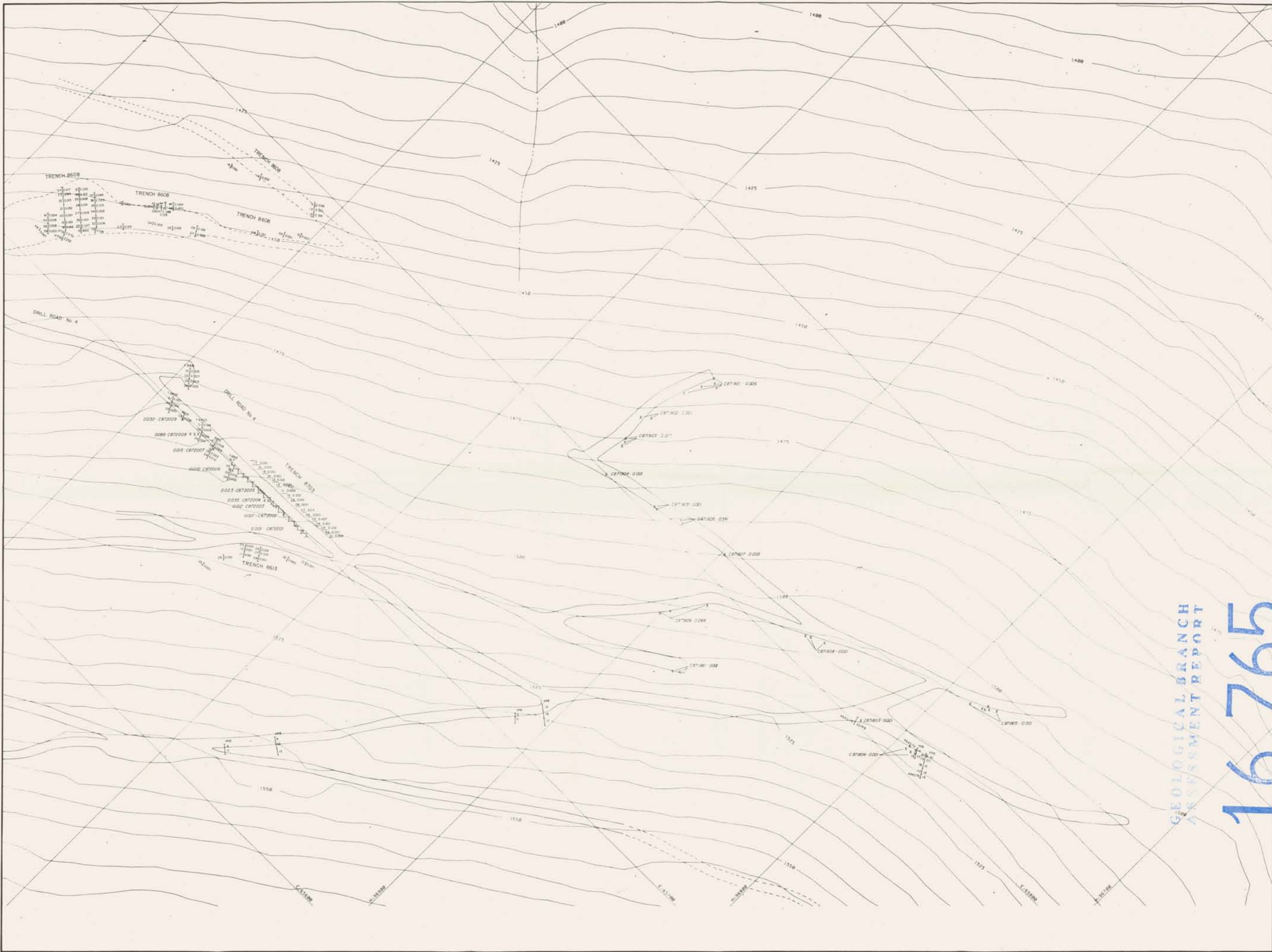


GEOLOGICAL BRANCH  
ASSESSMENT REPORT

16,765

PART 2  
OF 3

<b>EUREKA RESOURCES, INC.</b>		<b>Figure</b>
FRASERGOLD PROJECT		
SHEET 4		6c
GEOLOGY		
DATE: Nov 1987	SCALE: 1:500 / 1:1000 N.T.S. 83 A17	
CAMPBELL & ASSOCIATES		



GEOLOGICAL BRANCH  
ASSESSMENT REPORT

16765  
Part 2 of 3

- LEGEND**
- X CQT CHIP SAMPLE OF QUARTZ VEINS
  - C TRENCH SAMPLE - CHIP SAMPLES TAKEN OVER 10, 15, OR 20 METER INTERVALS
  - GRADE IN OZ Au/TON OVER INDICATED WIDTH OF 10, 15 OR 20 METER WIDTH
  - MAGNETIC DECLINATION 21°15' E
  - GRID NORTH 00° 47' 41" WGS84
  - CONTOUR INTERVAL 5 METERS

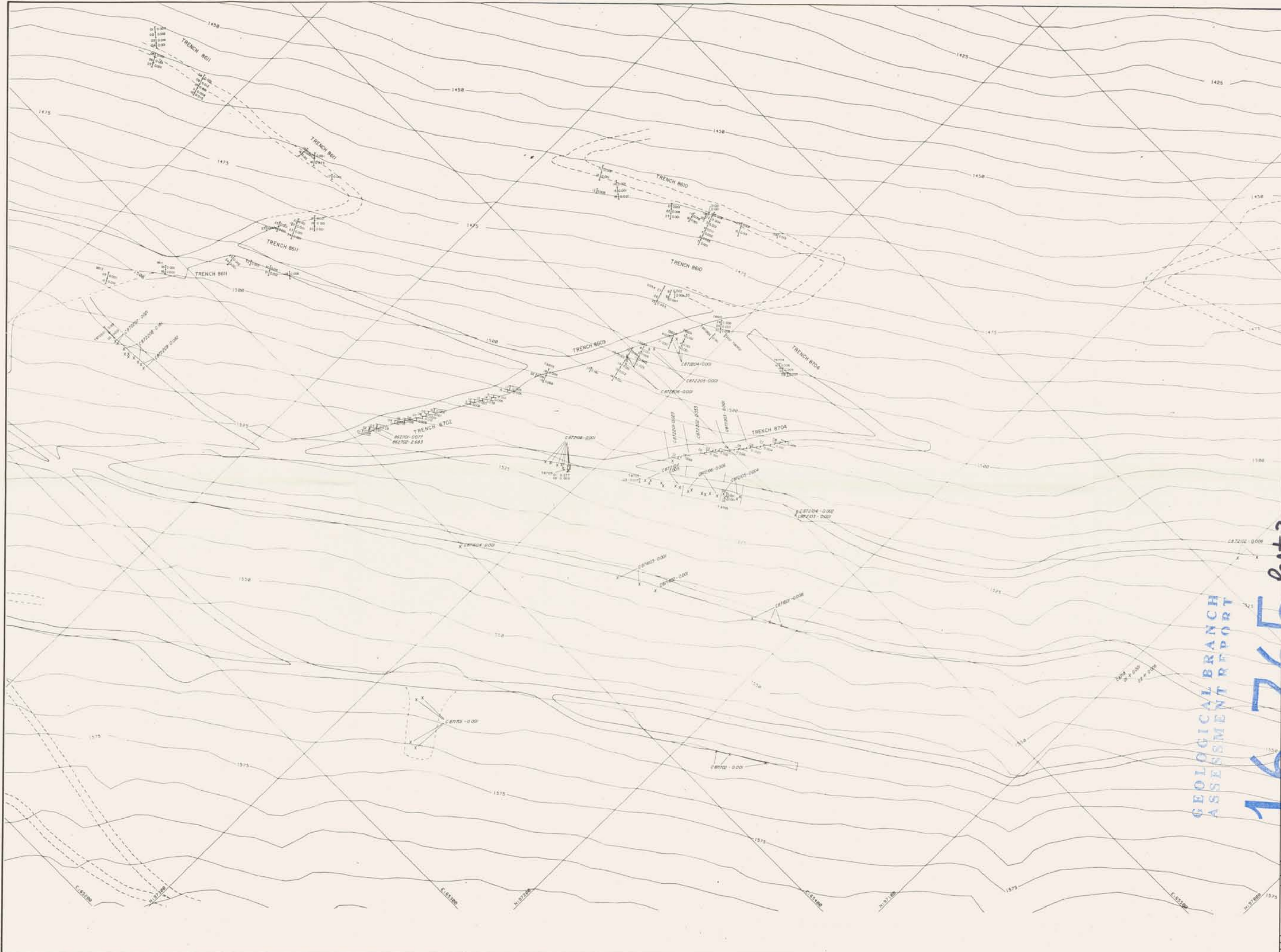


**EUREKA RESOURCES, INC.**  
FRASERGOLD PROJECT

SHEET 2  
TRENCH PLAN

DATE: Nov 1987 SCALE: 4000/ASHP Figure  
N.T.S. 83 A17  
CAMPBELL & ASSOCIATES 11 a





GEOLOGICAL BRANCH  
ASSESSMENT REPORT

16,765

Part 2  
of 3

- LEGEND**
- X CP7 CHP SAMPLE OF QUARTZ VEINS
  - TRENCH SAMPLE - CHP SAMPLES TAKEN OVER 10, 15, OR 2.0 METER INTERVALS
  - GRADE IN DEVIATION OVER INDICATED WIDTH OF 10, 15 OR 2.0 METER WIDTH



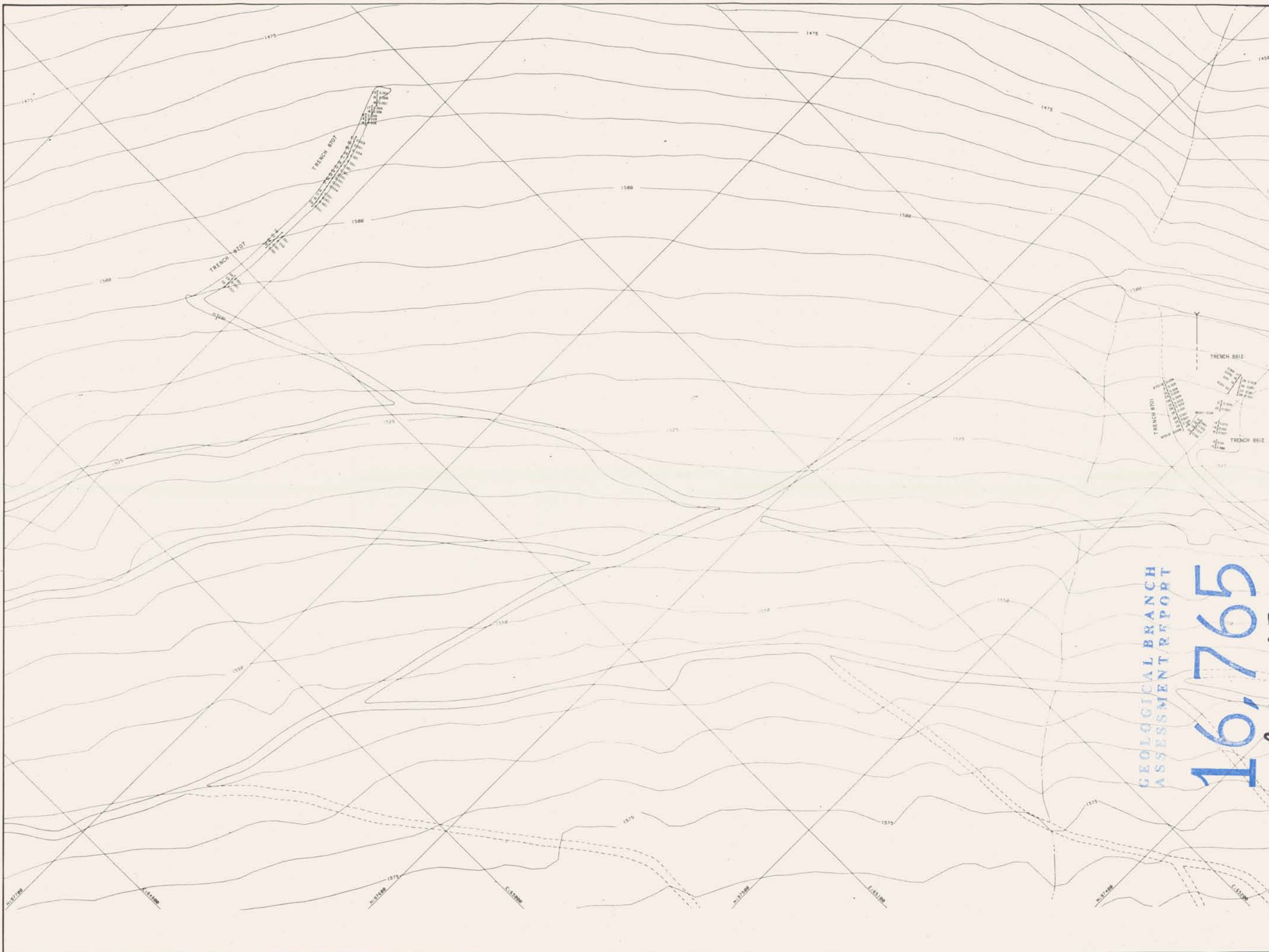
MAGNETIC DECLINATION 2 1/2° E  
GRID NORTH 50° 47' 40" W  
CONTOUR INTERVAL: 5 METERS



**EUREKA RESOURCES, INC.**  
FRASERGOLD PROJECT

SHEET 3  
TRENCH PLAN

DATE: Nov 1987 SCALE: 1:900/2500 Figure  
N.T.S.: 93 A17  
CAMPBELL & ASSOCIATES 11 b



GEOLOGICAL BRANCH  
ASSESSMENT REPORT

16,765

Part 2 of 3

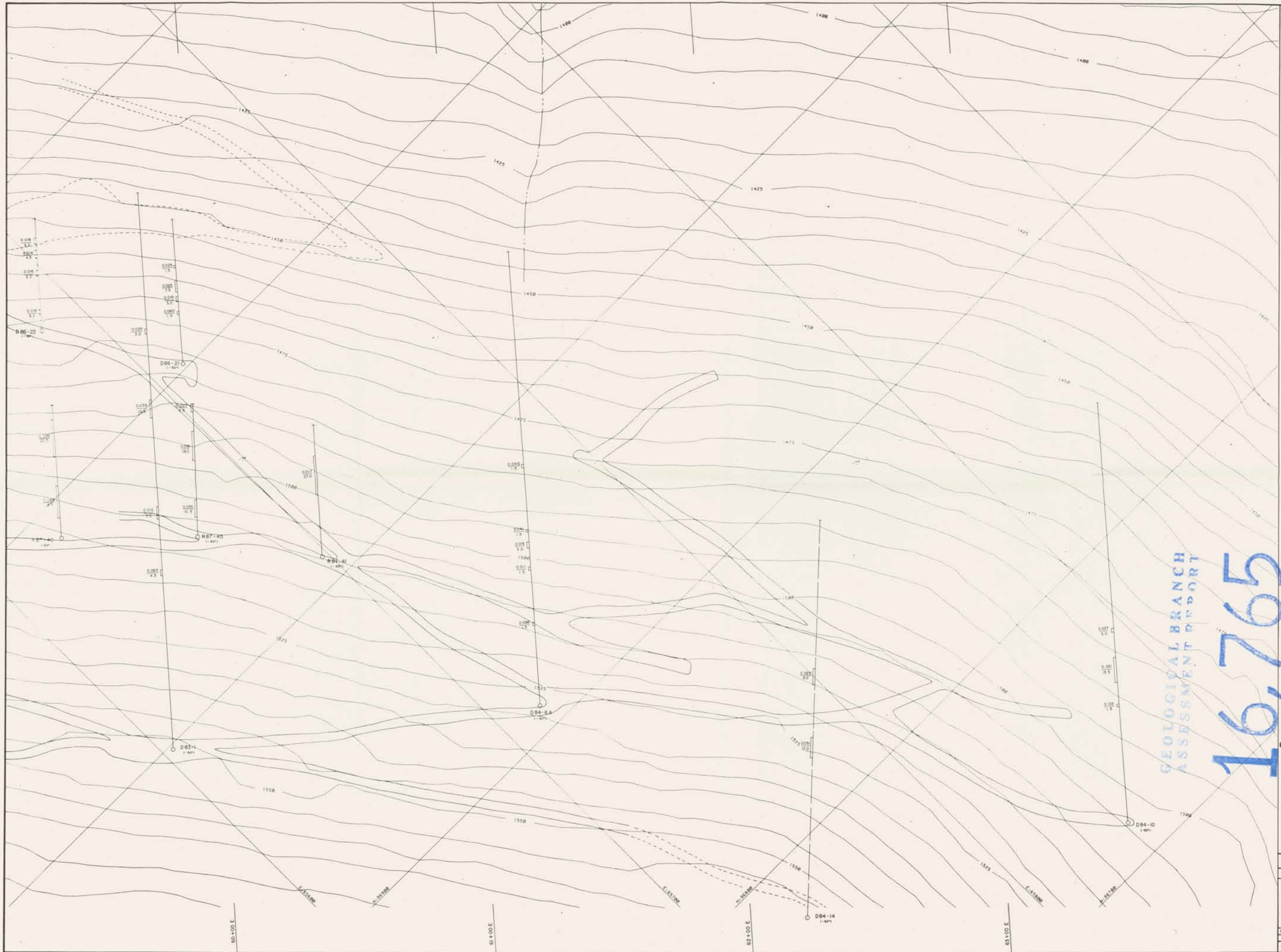
- LEGEND**
- X-ORF CHIP SAMPLE OF QUARTZ VEINS
  - TRENCH SAMPLE - CHIP SAMPLES TAKEN OVER 10, 15, OR 20 METER INTERVALS
  - GRADE IN 1% OR 4% OVER INDICATED WITH 10, 15, OR 20 METER WIDTH
  - PROPOSED ADIT - 1047
  - MAGNETIC DECLINATION 21° 14' E
  - GRID NORTH 001° 47' 00" W
  - CONTOUR INTERVAL 5 METERS



EUREKA RESOURCES, INC.  
FRASERGOLD PROJECT

SHEET 4  
TRENCH PLAN

DATE: Nov 1987 SCALE: 1:5000 Figure  
N.T.S. 93 A17  
CAMPBELL & ASSOCIATES 11 c



LEGEND

- DB7 Diamond Drill Hole
- RB7 Reverse Circulation Drill Hole
- BT Year of Drilling
- 45 Dip Angle of Hole
- Drill Hole - horizontal trace
- Mineralized Intersection  
grade in oz Au/ton over width in metres  
HG - High Grade > 0.10 oz Au/ton

MAGNETIC DECLINATION 21°14'E  
GRID NORTH 00°47' 00" W

CONTOUR INTERVAL 5 metres



GEOLOGICAL BRANCH  
ASSESSMENT REPORT

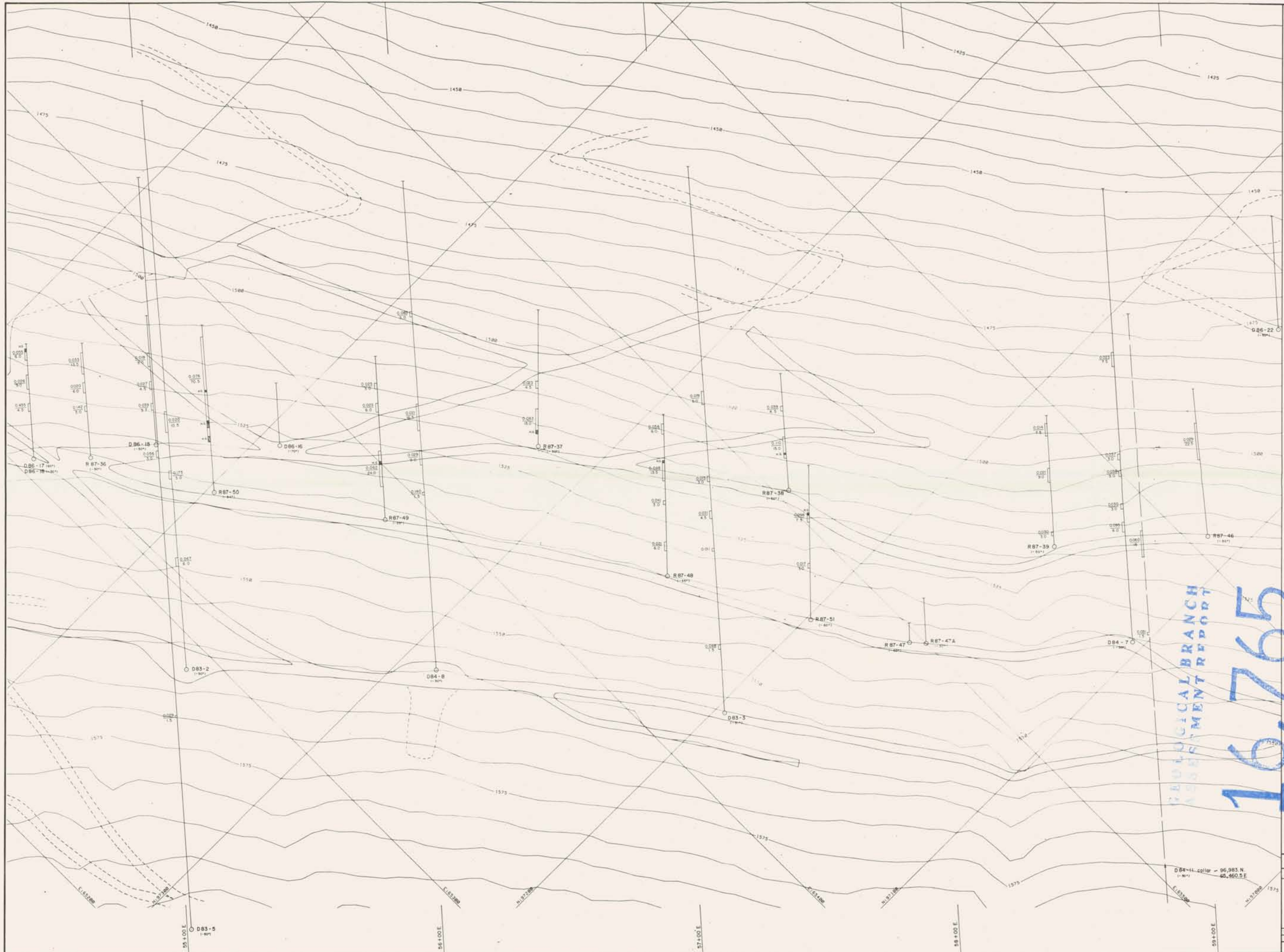
16,765

Part 2 of 3

EUREKA RESOURCES, INC.  
FRASERGOLD PROJECT

SHEET 2  
DRILL HOLE LOCATIONS

DATE: Nov 1987 SCALE: 1:5000 Figure  
N.T.S. 33 A17  
CAMPBELL & ASSOCIATES 12 a



LEGEND

- DBT Diamond Drill Hole
- RBT Reverse Circulation Drill Hole
- BT Year of Drilling
- ∠ Dip Angle of Hole
- Drill Hole - horizontal trace
- Mineralized intersection grade in oz Au / ton over width in metres  
H.G. - High Grade > 0.10 oz Au/ton

MAGNETIC DECLINATION 21°N E  
 GRID NORTH 00°47' 00" W  
 CONTOUR INTERVAL 5 metres



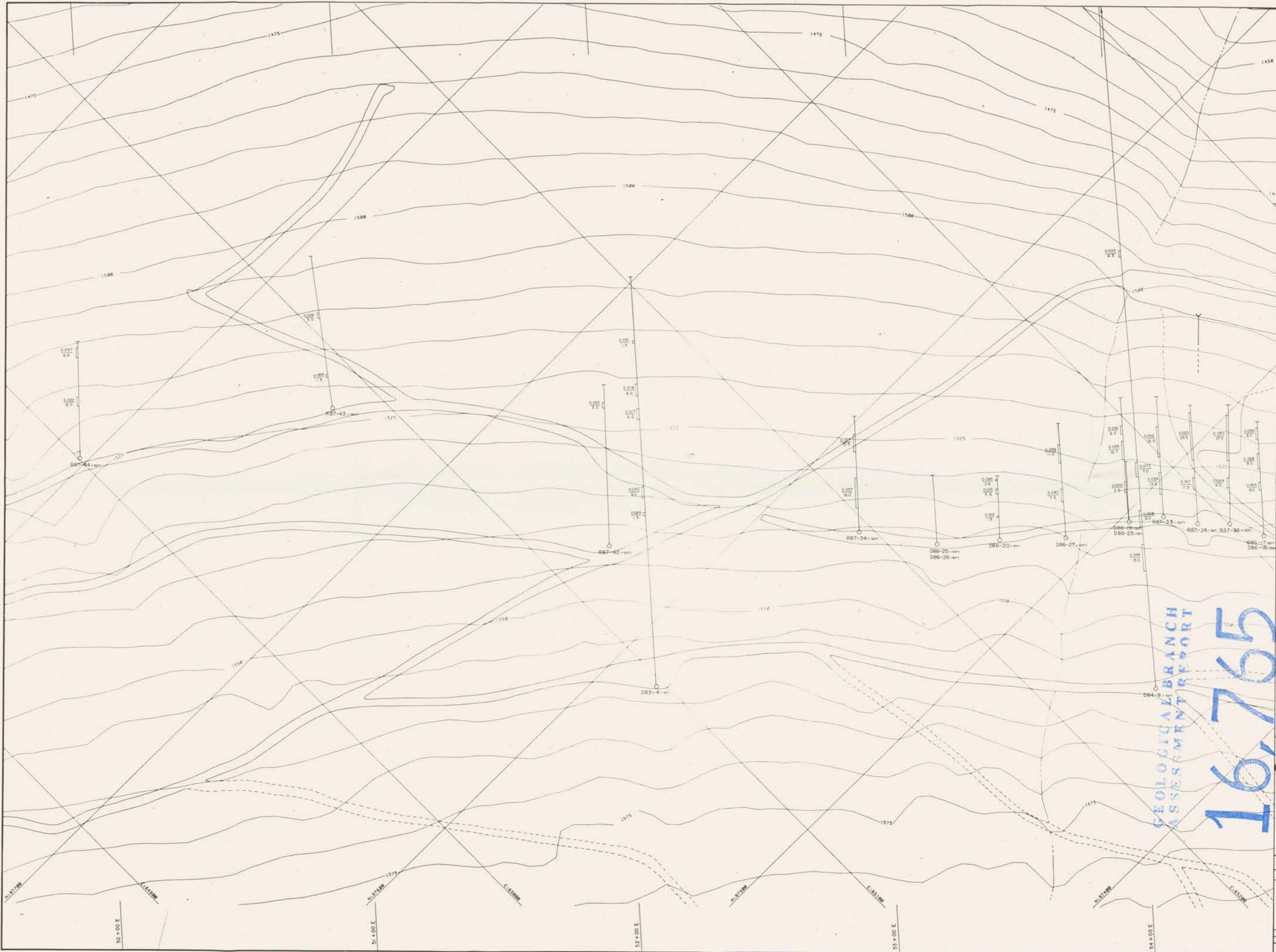
GEOLOGICAL BRANCH  
ASSESSMENT REPORT

16765

part 2 of 3

<b>EUREKA RESOURCES, INC.</b>		
<b>FRASER GOLD PROJECT</b>		
SHEET 3		
<b>DRILL HOLE LOCATIONS</b>		
DATE: Nov 1987	SCALE: 1:5000	Figure
N.T.S. - 83 A/1	SCALE: 1:5000	12 b
CAMPBELL & ASSOCIATES		12 b

DB4-11 collar - 96,985 N  
 46,460 SE

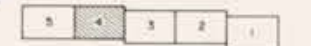


**LEGEND**

- DB7 Diamond Drill Hole
- RB7 Reverse Circulation Drill Hole
- B7 Year of Drilling
- ∠ Dip Angle of Hole
- Drill Hole - horizontal trace
- Proposed Adit - 1987
- Mineralized intersection grade in oz Au / ton over width in metres.  
HG - High Grade > 0.10 oz Au / ton

MAGNETIC DECLINATION 21°N+E  
GRID NORTH 001°42' approx

CONTOUR INTERVAL 5 metres



GEOLOGICAL BRANCH  
 ASSESSMENT REPORT  
**16,765**

Part 2 of 3

<b>EUREKA RESOURCES, INC.</b>		
FRASERGOLD PROJECT		
SHEET 4		
DRILL HOLE LOCATIONS		
DATE: Nov. 1987	SCALE: 1:5000	Figure
	N.T.S. 93 A/7	12 c
CAMPBELL & ASSOCIATES		



EUREKA PEAK  
75591

GEOLOGICAL BRANCH  
ASSESSMENT REPORT  
**16,765**  
Part 2 of 3

**LEGEND**

- CLAIM BOUNDARY
- DIAMOND DRILL HOLE
- ROAD (LOGGING, DRILL ACCESS)
- FAULT (INTERPRETED)
- SOIL ANOMALY CLASSIFICATION
  - 25-50 PPB AU
  - 50-150 PPB AU
  - > 150 PPB AU
- GOLD BEARING ZONE (DRILLED, PROJECTED)



EUREKA RESOURCES INC.  
FRASERGOLD PROJECT  
CLINTON MINING DIVISION, BRITISH COLUMBIA  
GOLD BEARING ZONE  
DEFINED BY SOIL GEOCHEMISTRY

DWG. UPDATED: NOV 1987

NOVEMBER, 1985

FIGURE 16