

LOG NO: 0105	RD.
ACTION:	
FILE NO:	

GEOCHEMICAL STREAM SAMPLING

on the PLACER LEASES NO

Pl. 8149, 8150, 8151, 8152, 8161, 8162, 8163, 8400, 10844, 10845

Jordan River/Bear Creek Area

Victoria Mining Division

Latitude 48 degrees 32 minutes

Longitude 123 degrees 55 minutes

N.T.S. 92B/12W

FILMED

By

Les Demczuk, M.Sc. F.G.A.C.
Geologist

Owner: Beau Pre Explorations Ltd.

Operator: Valentine Gold Corporation

December, 1987

16,818

GEOLOGICAL BRANCH
ASSESSMENT REPORT

**GOLD COMMISSIONER
RECEIVED and RECORDED
DEC 21 1987
M.R. # _____
VICTORIA, B.C.**

TABLE OF CONTENTS

		<u>Page #</u>
1.0	SUMMARY	1
2.0	INTRODUCTION	2
	2.1 Location, Access and Terrain	2
	2.2 Claim Status	2
3.0	GEOCHEMICAL SILT SURVEY	3
	3.1 Methodology	3
	3.2 Discussion	3
4.0	CONCLUSION AND RECOMMENDATIONS	4

APPENDICES

Appendix I	Geochemistry Lab Results
Appendix II	Statement of Costs
Appendix III	Statement of Qualifications

LIST OF DRAWINGS

Figure 1.	Location Map
Figure 2.	Claim Map
Figure 3.	Silt Sample Location Map

1.0 SUMMARY

On the request of Mr. Robert Beaupre, president of Beau Pre Explorations Ltd., a stream sediment sampling program was undertaken by Valentine Gold Corporation of Vancouver, B.C. The objective of this program was to determine the gold potential of placer claims in the Jordan River and Bear Creek areas. A very effective silt sampling method used by Valentine Gold Corporation has outlined anomalous areas of interest. Furthermore, follow up geochemical anomalies resulted in the discovery of sources of gold in the south-central part of Jordan River.

2.0 INTRODUCTION

The placer Leases group no 8, 9 and 16 consist of 10 placer claims and are held by Beau Pre Explorations Ltd., 1027 Pandora Street, Victoria, B.C.

An exploration program was conducted on the claims from July 1st to July 5th, 1987 by Valentine Gold Corporation as part of the major Valentine Mountain Project.

The work and results described within this report are intended to fulfill the assessment requirements for the placer leases groups no. 8, 9 and 16.

2.1 Location, Access and Terrain

The placer Leases group no. 8, 9 and 16 are located in the Victoria Mining Division in the Jordan River and Bear Creek area, immediately north and south of the Bear Creek and Diversion Reservoirs, approximately 30 km northwest of Sooke (Figure 1 and Figure 2).

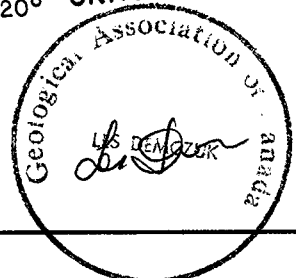
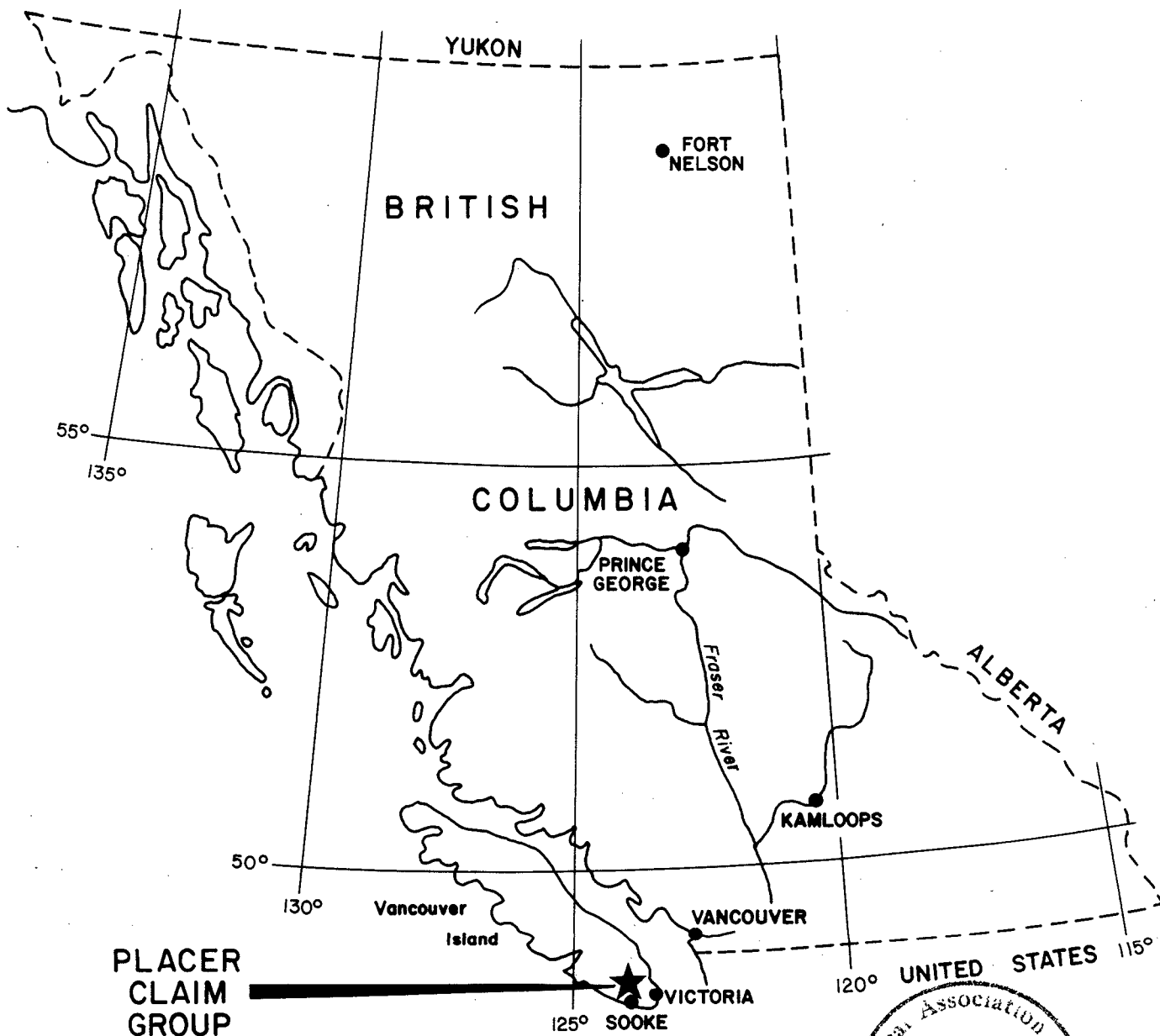
Access to the property is by a good gravel logging road from Sooke. Active and recent logging has provided a network of roads to most part of the property.

The topography is steep to moderately rugged typical of southern Vancouver Island. Much of the property has been clear-cut logged, replacing mature coastal forest with a rapidly generating second growth.

2.2 Claim Status

The property consists of three placer claim groups (Figure 2) as follows:

<u>Lease No.</u>	<u>Tag No.</u>	<u>Date Issued</u>	<u>Term Yrs.</u>	<u>Group</u>
8149	P32752	Dec. 31 1981	10	9
8150	P32753	Dec. 31 1981	10	9
8151	P32754	Dec. 31 1981	10	9
8152	P32755	Dec. 31 1981	10	9
8161	P32689	Dec. 31 1981	10	9
8162	P36690	Dec. 31 1981	10	9



VALENTINE GOLD CORPORATION

LOCATION MAP

BEAU PRE EXPLORATIONS
PLACER GROUP 8, 9 AND 16

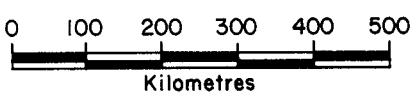
Prepared By: L. DEMCZUK

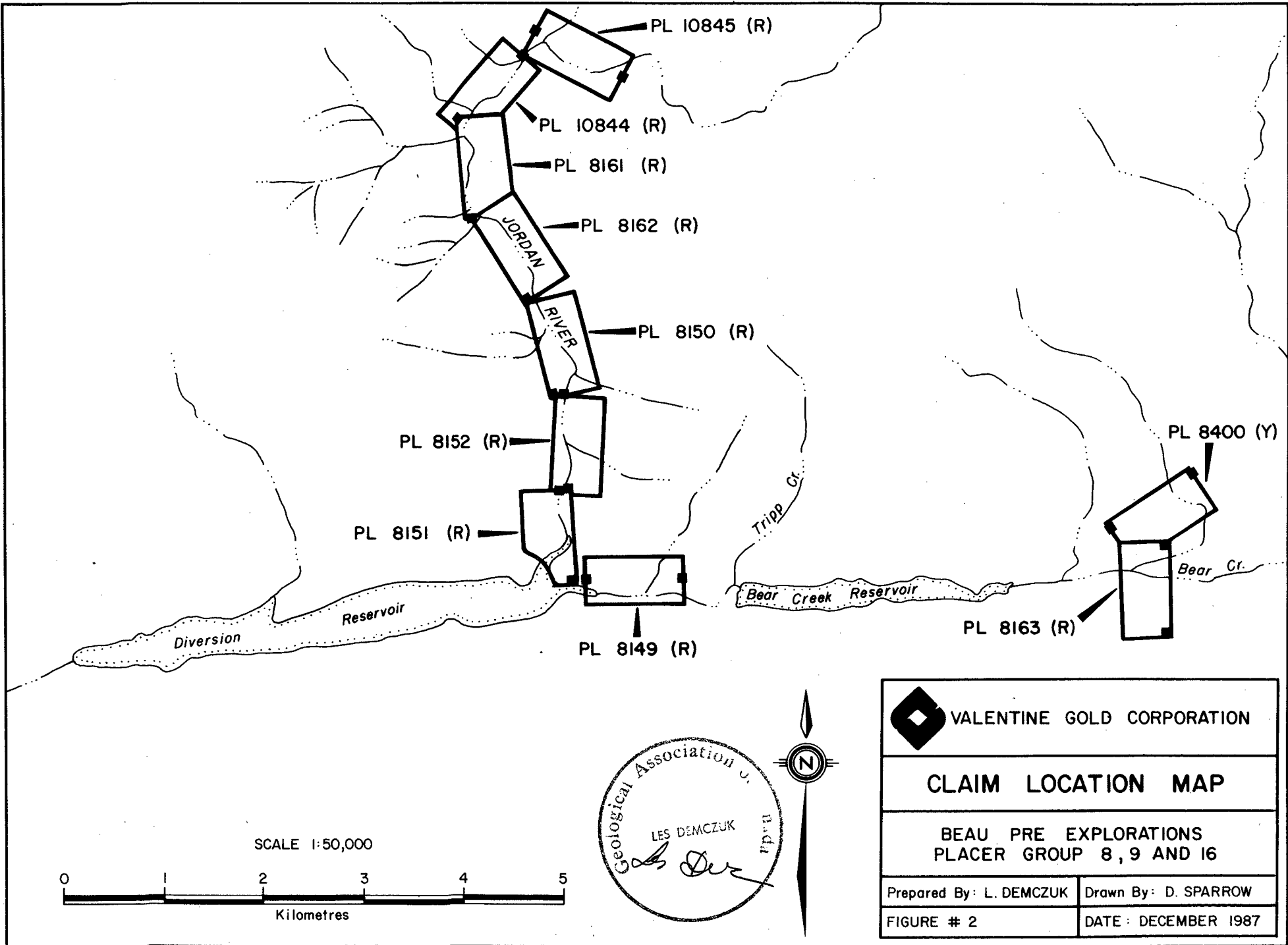
Drawn By: D. SPARROW


FIGURE # 1

DATE: DECEMBER 1987

SCALE 1:10,000,000





 VALENTINE GOLD CORPORATION	
CLAIM LOCATION MAP	
BEAU PRE EXPLORATIONS PLACER GROUP 8, 9 AND 16	
Prepared By: L. DEMCZUK	Drawn By: D. SPARROW
FIGURE # 2	DATE: DECEMBER 1987

<u>Lease No.</u>	<u>Tag No.</u>	<u>Date Issued</u>	<u>Term Yrs.</u>	<u>Group</u>
8163	P32691	Dec. 31 1981	10	8
8400	P27600	Mar. 10 1981	10	8
10844	P38183	Apr. 18 1984	10	16
10845	P38184	Apr. 18 1984	10	16

3.0 GEOCHEMICAL SILT SURVEY

The subject property is situated in the Leech River area which is known for its placer mining operations. The program conducted by Les Demczuk was designed to evaluate property potential for placer gold and determine the probable source of the gold in the samples from the Jordan River and Bear Creek. A total of 37 stream silts were taken from side creeks along the Jordan River and Bear Creek (figure 3). Most of the silt samples were analyzed for Au, As, Cu, Pb, Sb, W, HM% (Appendix I)

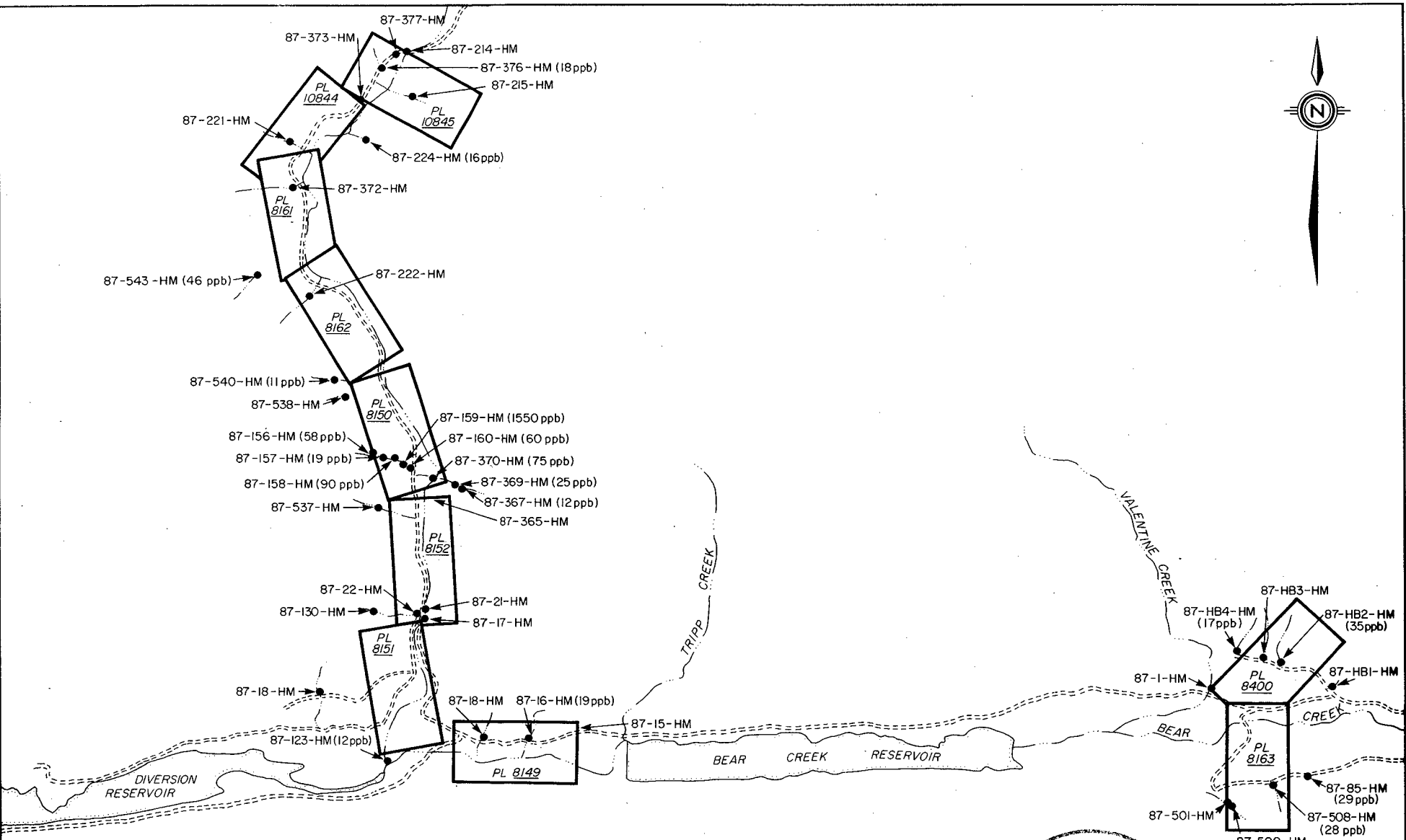
3.1 Methodology

The sampling method used was designed to determine gold and heavy minerals from larger than normal sample. In order to obtain standard samples and remove the "nugget effect" larger samples were sieved under the stream water to 20 mesh size. The screened material was panned down to the amount marked on the bottom of the screen. Panned samples were collected in a kraft sample bag and shipped to MIN-EN Laboratories of North Vancouver for analysis.

3.2 Discussion

Bear Creek Area: The highest gold value results of 35 ppb and 28 ppb indicate the potential for placer gold or gold mineralization in the bedrock.

Jordan River Area: The gold values from the south part of the Jordan River are considered threshold (Au-19ppb maximum) In the central part, gold values range from 3 to 1550 ppb and in general are on "highly anomalous" level. The gold in silts from the North part of the property is generally low and range from 3 to 18 ppb.



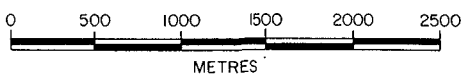
VALENTINE GOLD CORPORATION

SILT SAMPLE LOCATION MAP

BEAU PRE EXPLORATIONS
PLACER GROUP 8, 9 AND 16

Prepared By: L. DEMCZUK Drawn By: D. SPARROW

FIGURE : 3 DATE : DECEMBER 1987

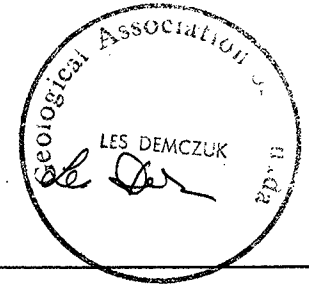


LEGEND

----- ROAD - - - - - CREEK

87-543-HM (46ppb) → ●

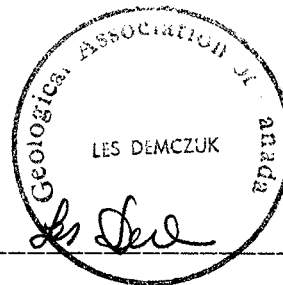
SILT SAMPLE # PARTS PER BILLION GOLD



4.0 CONCLUSION AND RECOMMENDATIONS

The Bear Creek is distinctly anomalous and further follow-up of the banks of the creek should be undertaken.

The very high gold values from the central part of the Jordan River are related to arsenopyrite/gold showings on the slopes above the Jordan River. All small creeks on they Jordan River with anomalous gold values require further follow-up.



Les Demczuk, M.Sc., F.G.A.G.
per:

Valentine Gold Corporation
and
Beau Pre Explorations Ltd.

APPENDIX I

PROJECT NO:
ATTENTION: P. MAZACEK

WEST 15TH ST., NORTH VANCOUVER, B.C. V7M 1T2
(604)980-5814 OR (604)988-4524

FILE NO: 7-590/P1+2
PE HM GEOCHEM * DATE: JUNE 26, 1987

(VALUES IN PPM)	AG	AS	CU	PB	ZN	W	AU-PPB	HMZ
✓ 87-01 HM	1.1	2	45	20	53	5	6	9.56
✓ 87-15 HM	1.2	1	31	11	41	1	2	11.47
✓ 87-16 HM	1.4	9	25	12	79	10	19	20.81
✓ 87-17 HM	1.9	30	35	26	53	10	2	18.30
✓ 87-18 HM	1.1	11	30	18	33	5	2	24.91
✓ 87-21 HM	.8	16	23	13	32	3	1	43.10
✓ 87-22 HM	1.5	1	50	14	43	8	1	23.04
✓ 87HB-01	.9	19	34	16	49	5	8	3.72
✓ 87HB-02	1.1	11	40	22	48	1	35	3.74
✓ 87HB-04	1.1	24	36	21	41	3	17	6.71
✓ 87-123-HM	.4	9	7	1	25	1	12	

COMPANY: VALENTINE GOLD CORP.

MIN-EN LABS ICP REPORT

(ACT:631) PAGE 1 OF 1

PROJECT NO:

705 WEST 15TH ST., NORTH VANCOUVER, B.C. V7M 1T2

FILE NO: 7-648HM/P1+2

ATTENTION: LES DEMCZUK

(604)980-5814 OR (604)988-4524

* TYPE HEAVY MINERAL * DATE: JULY 3, 1987

(VALUES IN PPM)	AG	AS	CO	SB	ZN	W	AU-PPB	HMZ
✓ 87-130-HM	.6	5	8	1	18	1	11	
✓ 87-156-HM	.4	44	9	1	32	1	59	
✓ 87-157-HM	.3	32	9	1	32	1	19	
✓ 87-158-HM	.4	27	13	1	37	1	90	
✓ 87-159-HM	.5	31	12	1	32	1	1550	
✓ 87-160-HM	.5	25	13	1	37	1	60	
✓ 87-215-HM	.5	27	16	1	65	1	3	
✓ 87-214-HM	1.1	44	25	3	102	1	4	

COMPANY: VALENTINE GOLD CORP.

MIN-EN LABS ICP REPORT

(ACT:631) PAGE 1 OF 1

PROJECT NO:

705 WEST 15TH ST., NORTH VANCOUVER, B.C. V7M 1T2

FILE NO: 7-663HM/P1+2

ATTENTION: LES DEMCZUK

(604)980-5814 OR (604)988-4524

* TYPE HEAVY MINERAL * DATE: JULY 8, 1987

(VALUES IN PPM)	AG	AS	CO	SB	ZN	W	AU-PPB	HMZ
✓ 87-221-HM	.7	23	12	2	53	1	10	6.77
✓ 87-222-HM	.8	16	5	2	22	1	3	4.75
87-223-HM	.8	26	7	1	44	1	1680	3.16
✓ 87-224-HM	1.1	38	10	2	61	1	16	1.85

COMPANY: VALENTINE GOLD CORP.

MIN-EN LABS ICP REPORT

(ACT:631) PAGE 1 OF 1

PROJECT NO:

715 WEST 15TH ST., NORTH VANCOUVER, B.C. V7M 1T2

FILE NO: 7-742HM

ATTENTION: PAVEL MAZACEK

(604)980-5814 OR (604)988-4524

* TYPE HEAVY MINERAL * DATE: JULY 17, 1987

(VALUES IN PPM)	AG	AS	W	AU-PPB	HMZ
✓ 87-365-HM	.4	13	1	7	5.74
87-366-HM	.5	33	3	5	7.62
✓ 87-367-HM	.4	3	1	12	5.88
✓ 87-369-HM	.5	9	7	25	5.40
✓ 87-370-HM	.6	19	2	75	8.88
87-371-HM	.5	4	3	3	22.45
✓ 87-372-HM	.7	5	2	4	3.57
✓ 87-373-HM	.7	12	1	5	8.76
87-374-HM	.7	13	1	2	6.11
87-375-HM	.7	8	1	7	6.15
✓ 87-376-HM	.4	21	2	18	1.19
✓ 87-377-HM	.5	13	5	4	1.56

COMPANY: VALENTINE GOLD CORP.

MIN-EN LABS ICP REPORT

(ACT:616) PAGE 1 OF 1

PROJECT NO:

705 WEST 15TH ST., NORTH VANCOUVER, B.C. V7M 1T2

FILE NO: 7-944/P1+2

ATTENTION: PAVEL MAZACEK

(604)980-5814 OR (604)988-4524

* TYPE HEAVY MINERAL * DATE: AUGUST 13, 1987

(VALUES IN PPM)	AG	AS	CU	PB	SB	ZN	AU-PPB	HMZ
✓ 87-500-HM	1.0	26	222	7	2	91	7	16.60
✓ 87-501-HM	.5	18	67	13	1	76	3	12.39
✓ 87-508-HM	.9	22	59	14	2	85	28	7.48

COMPANY: VALENTINE GOLD CORP.

MIN-EN LABS ICP REPORT

(ACT:F31) PAGE 1 OF 3

PROJECT NO:

705 WEST 15TH ST., NORTH VANCOUVER, B.C. V7M 1T2

FILE NO: 7-1030/P1+2

ATTENTION: PAVEL MAZACEK

(604)980-5814 DR (604)988-4524

HEAVY MINERAL

DATE: AUGUST 20, 1987

(VALUES IN PPM)	AG	AL	AS	B	BA	BE	BI	CA	CD	CO	CU	FE	K
✓ 87-537-HM	1.3	15950	7	6	82	1.4	18	3210	1.7	11	31	42480	1820
✓ 87-538-HM	.1	8810	64	1	36	1.8	8	3640	2.4	7	39	60120	520
87-539-HM	.1	13990	546	6	98	5.0	5	2860	13.0	7	72	176240	540
✓ 87-540-HM	.1	9380	350	1	59	2.0	7	2980	7.8	8	42	82460	570
87-541-HM	.7	14400	375	10	162	7.4	1	5160	7.6	1	209	281350	1070
87-542-HM	.1	15450	682	4	103	3.0	3	6770	16.4	11	74	104520	1240
✓ 87-543-HM	1.1	12320	537	8	116	4.3	3	3330	12.7	6	151	151560	820

COMPANY: VALENTINE GOLD CORP.

MIN-EN LABS ICP REPORT

(ACT:F31) PAGE 3 OF 3

PROJECT NO:

705 WEST 15TH ST., NORTH VANCOUVER, B.C. V7M 1T2

FILE NO: 7-1030/P1+2

ATTENTION: PAVEL MAZACEK

(604)980-5814 DR (604)988-4524

HEAVY MINERAL

DATE: AUGUST 20, 1987

(VALUES IN PPM)	ZN	GA	SN	W	CR	AU-PPB	HMZ
✓ 87-537-HM	49	2	3	3	38	4	3.12
✓ 87-538-HM	57	1	1	3	28	9	1.37
87-539-HM	157	1	1	1	34	11	0.53
✓ 87-540-HM	54	1	2	3	35	78	0.93
87-541-HM	131	2	2	8	50	109	0.59
87-542-HM	85	1	1	1	49	25	0.76
✓ 87-543-HM	129	1	2	3	33	46	2.14

RECEIVED
AUG 24 1987

APPENDIX II

STATEMENT OF EXPENSES

Placer Leases group no. 8, 9 and 16

July 1st - July 5th, 1987

Personnel

L. Demczuk	Geologist	1 day @ \$250	\$ 250
B. Bogdanski	Field Asst.	5 days @ \$130	\$ 650
D. MacIntyre	Field Asst.	5 days @ \$130	\$ 650

Truck Rental

5 days @ \$75	\$ 375
---------------	--------

Travel

Meals, gas, etc.	\$ 185
------------------	--------

Lab Analysis

MIN-EN Laboratories Ltd.	\$1,535
--------------------------	---------

Field Supplies

Map, bags, flagging tape, etc.	\$ 150
--------------------------------	--------

Report

Writing, Typing, etc.	\$ 370
-----------------------	--------

TOTAL	\$4,165
-------	---------

APPENDIX III

STATEMENT OF QUALIFICATIONS

I, LES DEMCZUK, of the City of Vancouver, Province of British Columbia do hereby certify that:

1) I am a Mining Geologist Engineer residing at 210 - 1860 Nelson Street, Vancouver, B.C.

2) I graduated from University of Mining and Metallurgy, Krakow, Poland in 1977 with a Master of Science degree in Geology.

3) I have worked in mineral and coal exploration since 1977 and have practiced my profession since 1977.

4) I am a registered Fellow of the Geological Association of Canada.

5) I am temporarily employed with Valentine Gold Corporation of Vancouver, B.C. and have been since June, 1987.

Les Demczuk

