

ARIS SUMMARY SHEET

District Geologist, Kamloops

Off Confidential: 89.02.18

ASSESSMENT REPORT 17004

MINING DIVISION: Similkameen

PROPERTY: Man
LOCATION: LAT 49 44 48 LONG 120 29 08
UTM 10 5513280 681144
NTS 092H09W

CLAIM(S): Man
OPERATOR(S): Brican Res.
AUTHOR(S): Ziebart, P.
REPORT YEAR: 1988, 14 Pages

COMMODITIES
SEARCHED FOR: Copper, Gold

GEOLOGICAL
SUMMARY: The property is underlain by porphyritic and trachytic volcanic rocks and syenitic intrusive rocks of the Upper Triassic Nicola Group. Gold and copper mineralization occurs in altered rocks along major faults.

WORK
DONE: Prospecting
PROS

Map(s) - 1; Scale(s) - 1:5000
SILT 3 sample(s) ;AU, CU, PB, ZN, AG, AS, SB
SOIL 25 sample(s) ;AU, CU, PB, ZN, AG, AS, SB

LOG NO: 0229	RD.
ACTION:	2/89
FILE NO:	

PROSPECTING
ASSESSMENT REPORT

on the

MAN CLAIM

PRINCETON AREA

SIMILKAMEEN MINING DIVISION, B.C.

NTS: 92H/9W
LATITUDE: 49° 44.9'
LONGITUDE: 120° 29.8'
OWNER: David Mehner
CONSULTANTS: Discovery Consultants
AUTHOR: Paul Ziebart
DATE: January 28, 1988

GEOLOGICAL BRANCH
ASSESSMENT REPORT

17,004

FILMED

SUB RECORDER
FEB 18 1988
M.R. _____ S. _____
VERNON, B.C.

TABLE OF CONTENTS

INTRODUCTION Page 1
GEOLOGY Page 2
INTERPRETATION Page 2
TECHNICAL DATA Page 3
STATEMENT OF COSTS Page 4
STATEMENT OF QUALIFICATIONS Page 5
APPENDIX

ILLUSTRATIONS

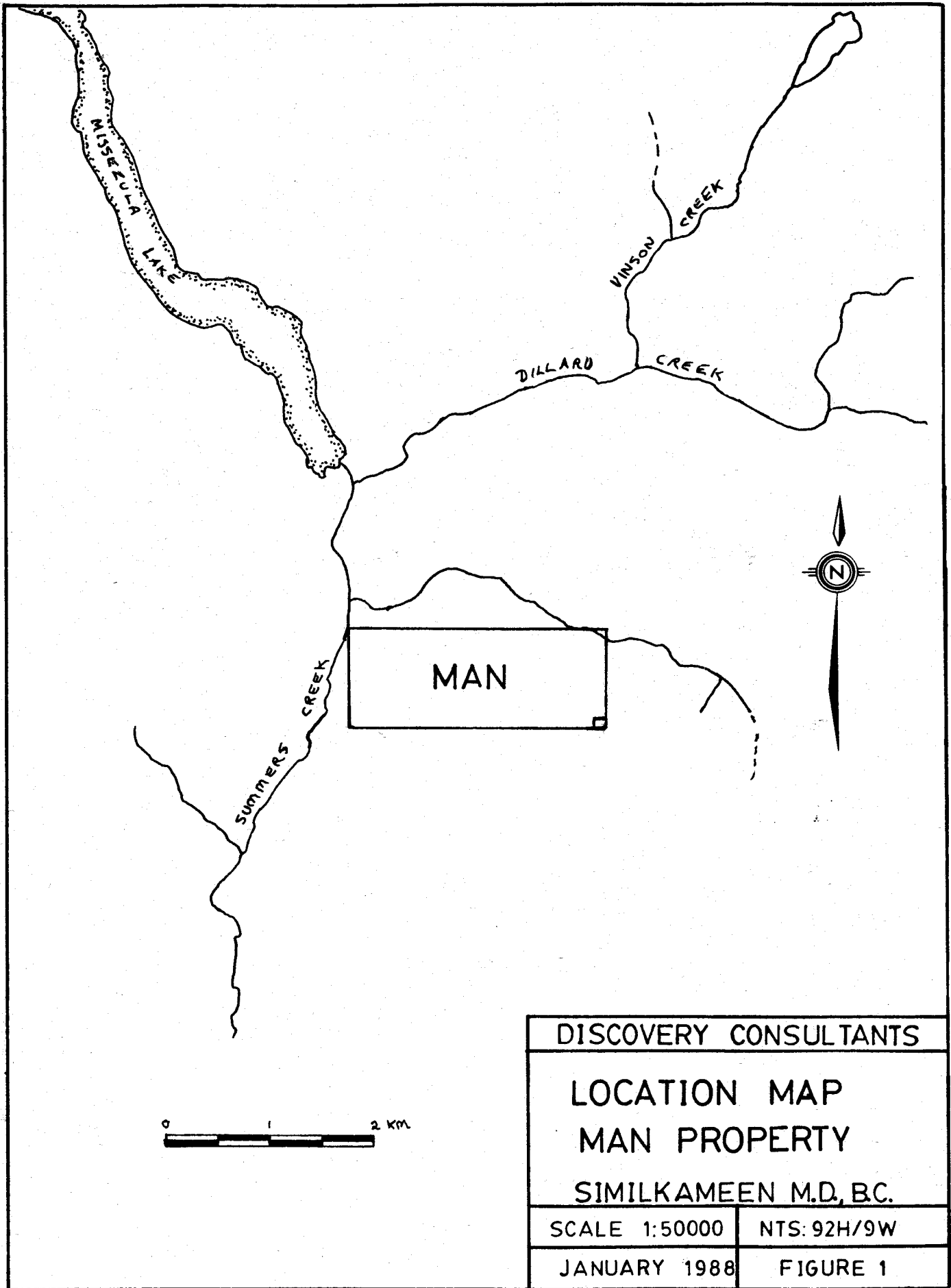
Figure 1	Location Map	Following Page	1
Figure 2	Sample Location Map :	In Pocket	

INTRODUCTION

The MAN claims, located 40km north of Princeton, B.C., are centered about 4.5km south of the south end of Missezula Lake and bounded on the west by Summers Creek.

The author spent one day prospecting and sampling the property, (October 1, 1987). Three stream sediment samples and 25 soil samples were collected and sent to Kamloops Research & Assay Laboratory Ltd. for geochemical analysis.

One anomalous stream sediment sample as well as an anomalous soil sample south of the known copper-gold mineralization are significant and warrant more work.



GEOLOGY

The north end of the property is underlain by a predominately syenitic intrusion. This stock is composed of syenodiorite, with hornblende diorite and altered (sericitic/argillitic) phases. The pinkish-grey syenodiorite has weak chloritic to argillitic alteration. This unit is well fractured and has a friable appearance in outcrop. Where fractured, the diorite is extensively veined with a fleshy pink zeolite. The highly altered phase locally contains 3% pyrite.

The eastern two-thirds of the property is underlain by dark greyish-green, massive and auto-brecciated hornblende porphyry flows. The southwestern area of the claim contains steeply dipping massive trachyte flows. A major north-south fault separates these rocks from the eastern volcanics. Significant gold and copper mineralization occurs within the altered syenite.

INTERPRETATION

From 1979 to 1981 Newmont Exploration outlined a porphyry copper-gold zone which strikes northwest and straddles the present day Man-Prime claim boundaries. There are some indications that this zone extends further to the southwest onto ground covered by the Man claim.

TECHNICAL DATA

<u>Sample Number</u>	<u>Description</u>
Man - 2	Stream sediment sample
Man - 3	Stream sediment sample
Man - 4	Stream sediment sample

Soil Line 3+60S, 0+00E to 6+00E
Soil samples were taken from the "B"
horizon every 25 metres.

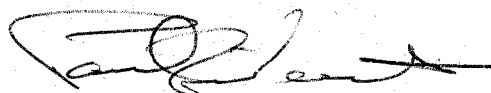
STATEMENT OF COSTS

1).	Personnel		
	Prospecting & Soil Sampling		
	Paul Ziebart October 1, 1987		
	1 day @ \$280/day		\$ 280.00
	Data Compilation & Report Writing		
	November 9, 1987		
	1 day @ \$280/day		280.00
2).	Analysis		
	Au, Cu, Pb, Zn, Ag, As, Sb		
	28 samples @ \$15.00/sample		420.00
3).	Transport 4x4 Truck		
	193 km @ \$.40/km		77.20
4).	Office Expense		
	Drafting	\$241.00	
	Secretarial	40.00	
	Photocopies & Map Prints	<u>35.00</u>	<u>316.00</u>
			\$1373.20

STATEMENT OF QUALIFICATIONS

I, Paul A. Ziebart, of the city of Kelowna, in the Province of British Columbia, do hereby state that:

1. I completed a two year course in Mining Technology at the Haileybury School of Mines in Haileybury, Ontario in 1969.
2. I have been employed as a prospector and/or technician in various phases of mining exploration for the last nineteen years.
3. I have been involved in mineral exploration programs carried out in B.C., the Yukon, N.W.T. and Quebec in the last nineteen years.



Paul Ziebart

January 28, 1988
Vernon, B.C.

APPENDIX

KAMLOOPS RESEARCH
&
ASSAY LABORATORY
LTD.

B.C. CERTIFIED ASSAYERS

912 LAVAL CRESCENT, KAMLOOPS, B.C. V2C 5P5
PHONE 372-2784 - TELEX 048-8320 - FAX 372 1112

GEOCHEMICAL LAB REPORT

DISCOVERY CONSULTANTS
BOX 933
VERNON, B.C.
VIT IM8

DATE NOVEMBER 5, 1987

FILE NO. G 1815

KRAL NO.	IDENTIFICATION	CU	PB	ZN	AG	PAGE 1 / 2	
						AS	SB
1	MAN-1	140.0	17.0	46.0	0.3	10.0	2.0
2	MAN-2	88.0	16.0	65.0	0.2	10.0	2.0
3	MAN-3	88.0	17.0	56.0	0.3	10.0	2.0
4	0+00E L3+60S	26.0	13.0	40.0	0.0	10.0	2.0
5	0+25E	48.0	16.0	103.0	0.0	10.0	2.0
6	0+50E	68.0	14.0	96.0	0.0	10.0	2.0
7	0+75E	56.0	10.0	76.0	0.0	10.0	2.0
8	1+00E	62.0	11.0	74.0	0.0	10.0	2.0
9	1+25E	34.0	9.0	51.0	0.0	10.0	2.0
10	1+50E	32.0	8.0	54.0	0.0	10.0	2.0
11	1+75E	25.0	10.0	64.0	0.0	10.0	2.0
12	2+00E	26.0	10.0	62.0	0.0	10.0	2.0
13	2+25E	28.0	10.0	56.0	0.0	10.0	2.0
14	2+50E	29.0	10.0	66.0	0.0	10.0	2.0
15	2+75E	37.0	9.0	62.0	0.0	10.0	2.0
16	3+00E	74.0	12.0	61.0	0.4	10.0	2.0
17	3+25E	220.0	13.0	32.0	0.8	10.0	2.0
18	3+50E	48.0	13.0	62.0	0.0	10.0	2.0
19	3+75E	29.0	12.0	79.0	0.0	10.0	2.0
20	4+00E	19.0	10.0	56.0	0.0	10.0	2.0
21	4+25E	31.0	10.0	43.0	0.3	10.0	2.0
22	4+50E	28.0	9.0	47.0	0.4	10.0	2.0
23	4+75E	32.0	9.0	52.0	0.2	10.0	2.0
24	5+00E	40.0	9.0	66.0	0.0	10.0	2.0
25	5+25E	67.0	11.0	66.0	0.0	10.0	2.0
26	5+50E	16.0	7.0	48.0	0.0	10.0	2.0
27	5+75E	52.0	10.0	52.0	0.0	10.0	2.0
28	6+00E L3+60S	56.0	12.0	49.0	0.0	10.0	2.0
29	R-87-R325	136.0	9.0	95.0	0.0	10.0	18.0
30	R-87-R326	600.0	5.0	28.0	0.3	10.0	21.0

KAMLOOPS RESEARCH & ASSAY LABORATORY LTD.
GEOCHEMICAL LAB REPORT

FILE NO. G 1815

PAGE 2 / 2
AS SB

KRAL NO.	IDENTIFICATION	CU	PB	ZN	AG	AS	SB
31	R-87-R327	602.0	4.0	28.0	0.0	10.0	19.0
32	R-87-R328	298.0	5.0	17.0	0.0	10.0	9.0
33	R-87-R329	1190.0	24.0	20.0	0.6	10.0	15.0
34	R-87-R330	150.0	13.0	160.0	0.6	10.0	14.0

IN AG COLUMN 0 INDICATES <.1PPM

IN AG COLUMN 20 INDICATES >20PPM

IN AS COLUMN 10 INDICATES <20PPM

IN SB COLUMN 2 INDICATES <4PPM

KAMLOOPS RESEARCH
&
ASSAY LABORATORY
LTD.

B. C. CERTIFIED ASSAYERS

912 LAVAL CRESCENT, KAMLOOPS, B. C. V2C 5P5
PHONE 372-2784 - TELEX 048-8320 - FAX 372 1112

GEOCHEMICAL LAB REPORT

DISCOVERY CONSULTANTS
BOX 933
VERNON, B. C.
VIT IMB

DATE NOVEMBER 5, 1987

FILE NO. G 1815A

PAGE 1 / 2

KRAL NO.	IDENTIFICATION	AU	PT	PD
1	MAN-1	3.0	0.0	0.0
2	MAN-2	35.0	0.0	0.0
3	MAN-3	3.0	0.0	0.0
4	0+00E L3+60S	3.0	0.0	0.0
5	0+25E	3.0	0.0	0.0
6	0+50E	3.0	0.0	0.0
7	0+75E	3.0	0.0	0.0
8	1+00E	3.0	0.0	0.0
9	1+25E	3.0	0.0	0.0
10	1+50E	3.0	0.0	0.0
11	1+75E	40.0	0.0	0.0
12	2+00E	3.0	0.0	0.0
13	2+25E	3.0	0.0	0.0
14	2+50E	3.0	0.0	0.0
15	2+75E	3.0	0.0	0.0
16	3+00E	3.0	0.0	0.0
17	3+25E	3.0	0.0	0.0
18	3+50E	3.0	0.0	0.0
19	3+75E	3.0	0.0	0.0
20	4+00E	3.0	0.0	0.0
21	4+25E	3.0	0.0	0.0
22	4+50E	3.0	0.0	0.0
23	4+75E	3.0	0.0	0.0
24	5+00E	3.0	0.0	0.0
25	5+25E	3.0	0.0	0.0
26	5+50E	3.0	0.0	0.0
27	5+75E	3.0	0.0	0.0
28	6+00E L3+60S	3.0	0.0	0.0
29	R-87-R325	3.0	0.0	0.0
30	R-87-R326	3.0	0.0	0.0

KAMLOOPS RESEARCH & ASSAY LABORATORY LTD.
GEOCHEMICAL LAB REPORT

FILE NO. G 1815A

PAGE 2 / 2

KRAL NO.	IDENTIFICATION	AU	PT	PD
31	R-87-R327	3.0	0.0	0.0
32	R-87-R328	3.0	0.0	0.0
33	R-87-R329	3.0	0.0	0.0
34	R-87-R330	3.0	0.0	0.0

IN AU COLUMN 3 INDICATES <5PPB

IN PT COLUMN 50 INDICATES <100PPB

IN PD COLUMN 3 INDICATES <5PPB

KAMLOOPS RESEARCH
&
ASSAY LABORATORY
LTD.

B.C. CERTIFIED ASSAYERS

912 LAVAL CRESCENT, KAMLOOPS, B.C. V2C 5P5
PHONE 372-2784 - TELEX 048-8320 - FAX 372 1112

GEOCHEMICAL LAB REPORT

DISCOVERY CONSULTANTS
BOX 933
VERNON, B.C.
VIT 6MB

DATE NOVEMBER 13, 1987

FILE NO. G 1823

KRAL NO.	IDENTIFICATION	CU	PB	ZN	AG	PAGE 1 / 1	
						AS	SB
1	MAN 4	184.0	17.0	52.0	0.6	10.0	2.0
2	MAN 5	101.0	21.0	49.0	0.3	10.0	2.0

IN AG COLUMN 0 INDICATES (.1PPM)

IN AS COLUMN 10 INDICATES (20PPM)

IN SB COLUMN 2 INDICATES (4PPM)

KAMLOOPS RESEARCH
&
ASSAY LABORATORY
LTD.

B. C. CERTIFIED ASSAYERS

912 LAVAL CRESCENT, KAMLOOPS, B. C. V2C 5P5
PHONE 372-2784 - TELEX 048-8320 - FAX 372 1112

GEOCHEMICAL LAB REPORT

DISCOVERY CONSULTANTS
BOX 933
VERNON, B. C.
VIT 6M8

DATE NOVEMBER 13, 1987

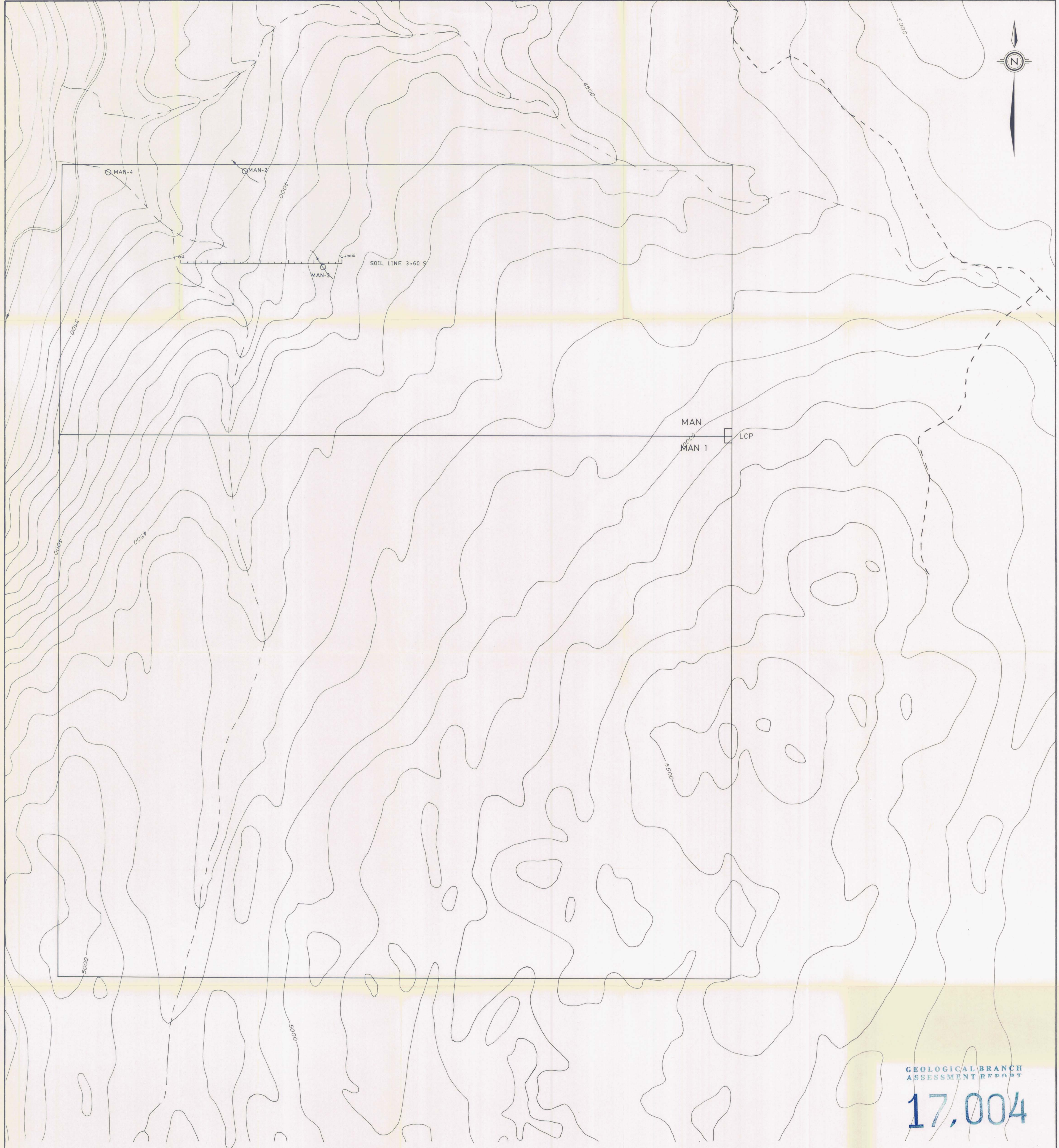
FILE NO. G 1823

PAGE 1 / 1

KRAL NO.	IDENTIFICATION	AU	PT	PD
1	MAN 4	120.0	0.0	0.0
2	MAN 5	3.0	0.0	0.0

IN AU COLUMN 3 INDICATES <5PPB

IN PT COLUMN 50 INDICATES <100PPB



GEOLOGICAL BRANCH
ASSESSMENT REPORT

17,004

○ STREAM SEDIMENT SAMPLE

DISCOVERY Consultants

BRICAN RESOURCES LTD.

MAN PROPERTY
SAMPLE LOCATION MAP

Date: November 24, 1997 Scale: 1:5,000
Project: 321 MTS: 92 W/98
Figure: 2 Mining Division: Simonsmeer

