

GEOLOGICAL BRANCH  
ASSESSMENT REPORT

17,258

Part 2 of 2

**LEGEND**

TERTIARY  
 + Tg SHEAR ZONE/ QUARTZ VEIN (dip direction specified)  
 SOOKE INTRUSIONS - DACITE SILL

UKC CRETACEOUS  
 NANAIMO GROUP  
 Comox Formation - CONGLOMERATE, SANDSTONE

JG JURASSIC  
 ISLAND INTRUSIONS - GRANODIORITE

MUTRK TRIASSIC  
 VANCOUVER GROUP  
 Karmutsen Formation - ANDESITE FLOWS AND TUFFS

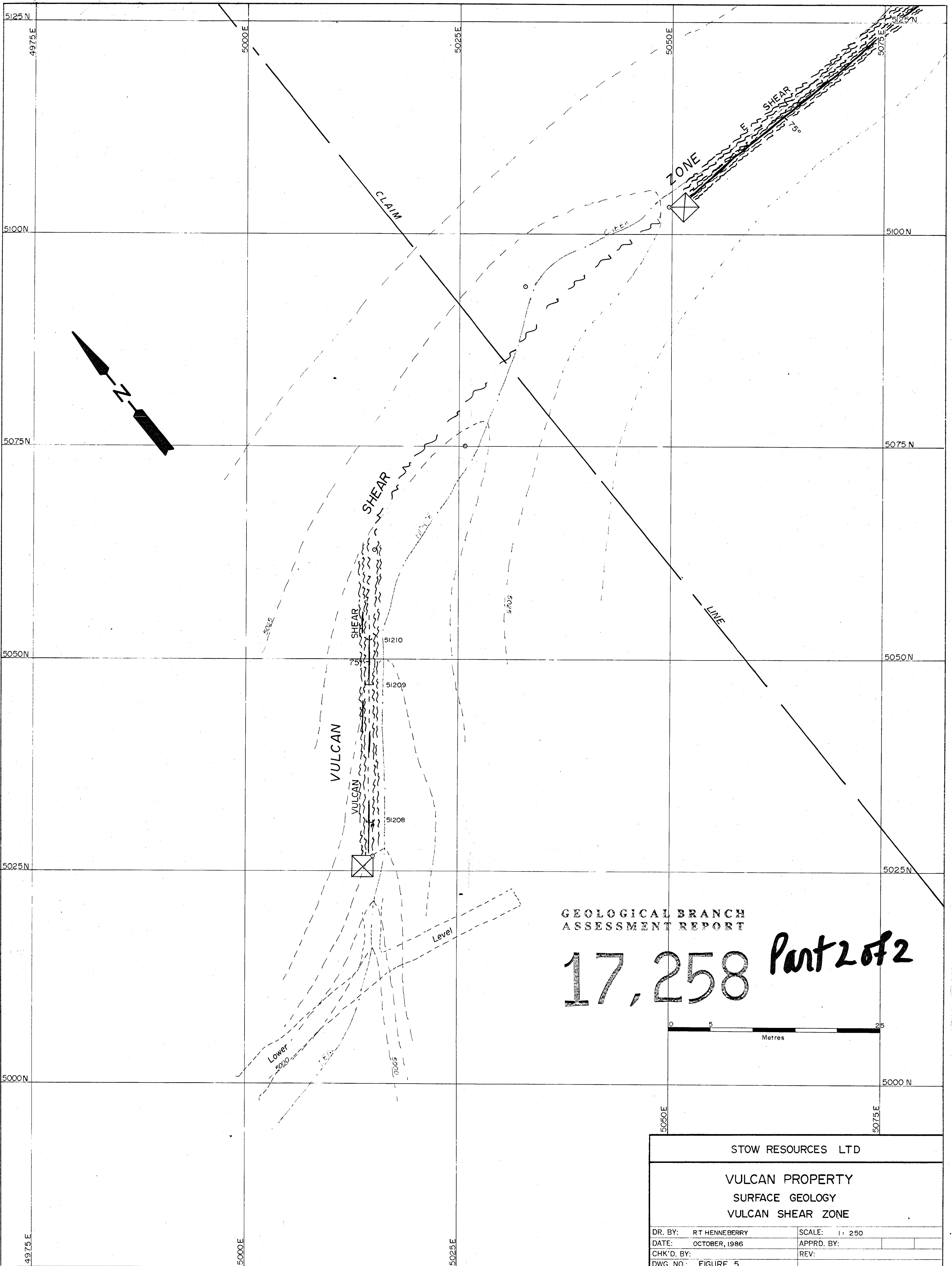
Ages from MULLER (1977)  
 Mapping by Henneberry and Young

--- Road  
 --- Creek  
 --- Adit  
 --- Shaft

--- 20 metre contour interval  
 --- Limit of Outcrop

0 200 400 600 800 1000  
 Metres

|                                    |                      |
|------------------------------------|----------------------|
| STOW RESOURCES                     |                      |
| VULCAN PROJECT<br>PROPERTY GEOLOGY |                      |
| DRAWN BY: R T HENNEBERRY           | SCALE: 1: 10,000     |
| CHECKED BY:                        | DATE: JANUARY, 1987  |
| APPROVED BY:                       | DRAWING NO: FIGURE 4 |



GEOLOGICAL BRANCH  
ASSESSMENT REPORT

17,258 Part 2 of 2

|   |               |
|---|---------------|
| STOW RESOURCES LTD                                      |               |
| VULCAN PROPERTY<br>SURFACE GEOLOGY<br>VULCAN SHEAR ZONE |               |
| DR. BY: RT HENNEBERRY                                   | SCALE: 1: 250 |
| DATE: OCTOBER, 1986                                     | APPRD. BY:    |
| CHK'D. BY:  | REV:          |
| DWG. NO.: FIGURE 5                                      |               |



RHINO XIV WANDERING STAR

300 W

UKC  
MURK

300 N

600

000

000

48 G

49 G

50 G

Creek

300 E

GEOLOGICAL BRANCH  
ASSESSMENT REPORT

17,258  
Part 2 of 2

Values in gammas 5---  
Contoured values less than 55800 gammas

Dendborsa

300 S

500 W

250 W

T6

MURK

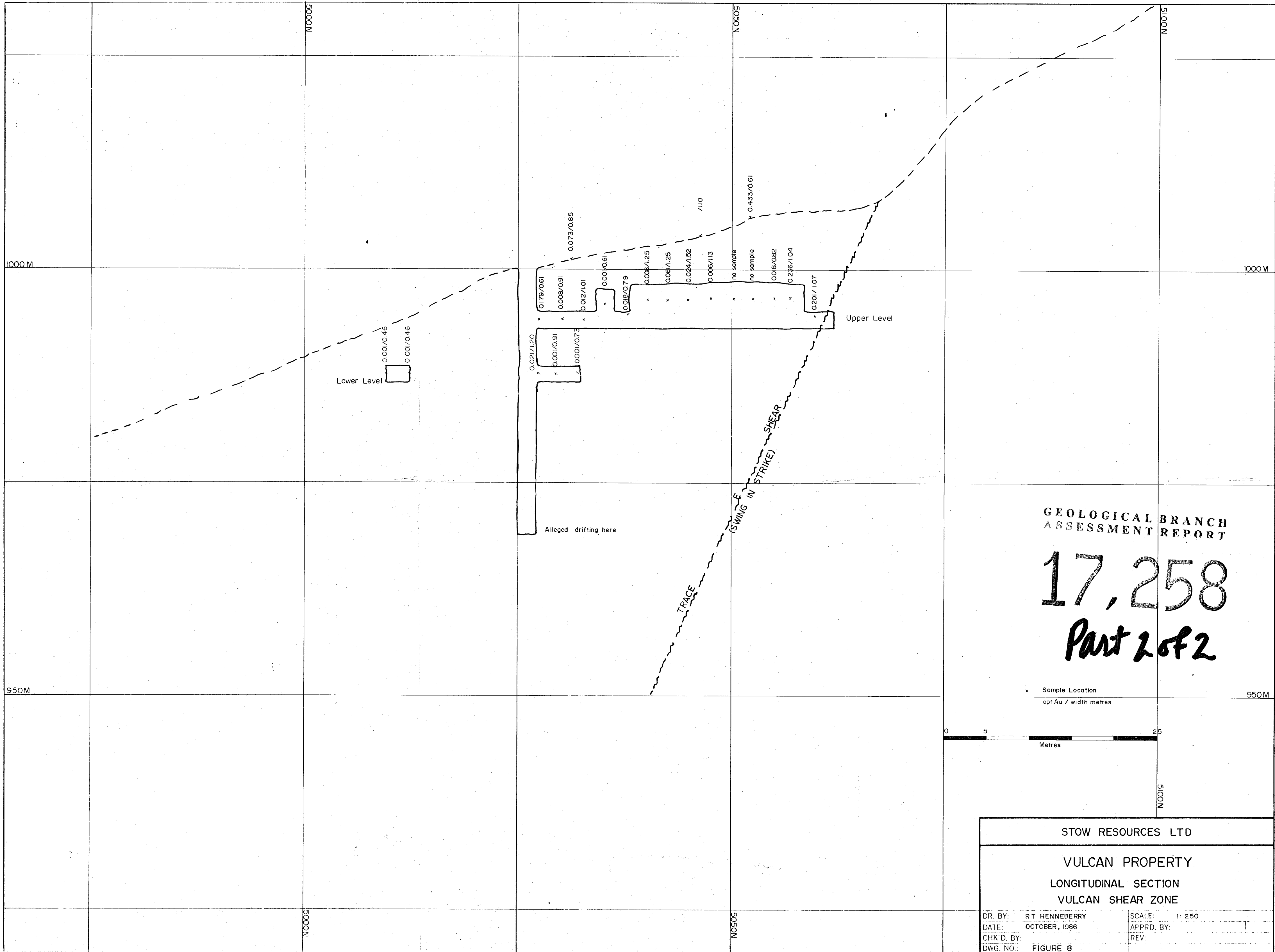
REX I

RHINO XII

700



|                               |                        |
|-------------------------------|------------------------|
| STOW RESOURCES                |                        |
| VULCAN PROJECT                |                        |
| E,V GRID: PROTON MAGNETOMETER |                        |
| DRAWN BY: RT HENNEBERRY       | SCALE: 1: 2500         |
| CHECKED BY:                   | DATE: MARCH, 1987      |
| APPROVED BY:                  | DRAWING NO: FIGURE 12g |



GEOLOGICAL BRANCH  
ASSESSMENT REPORT

17,258  
Part 2 of 2

x Sample Location  
opt Au / width metres

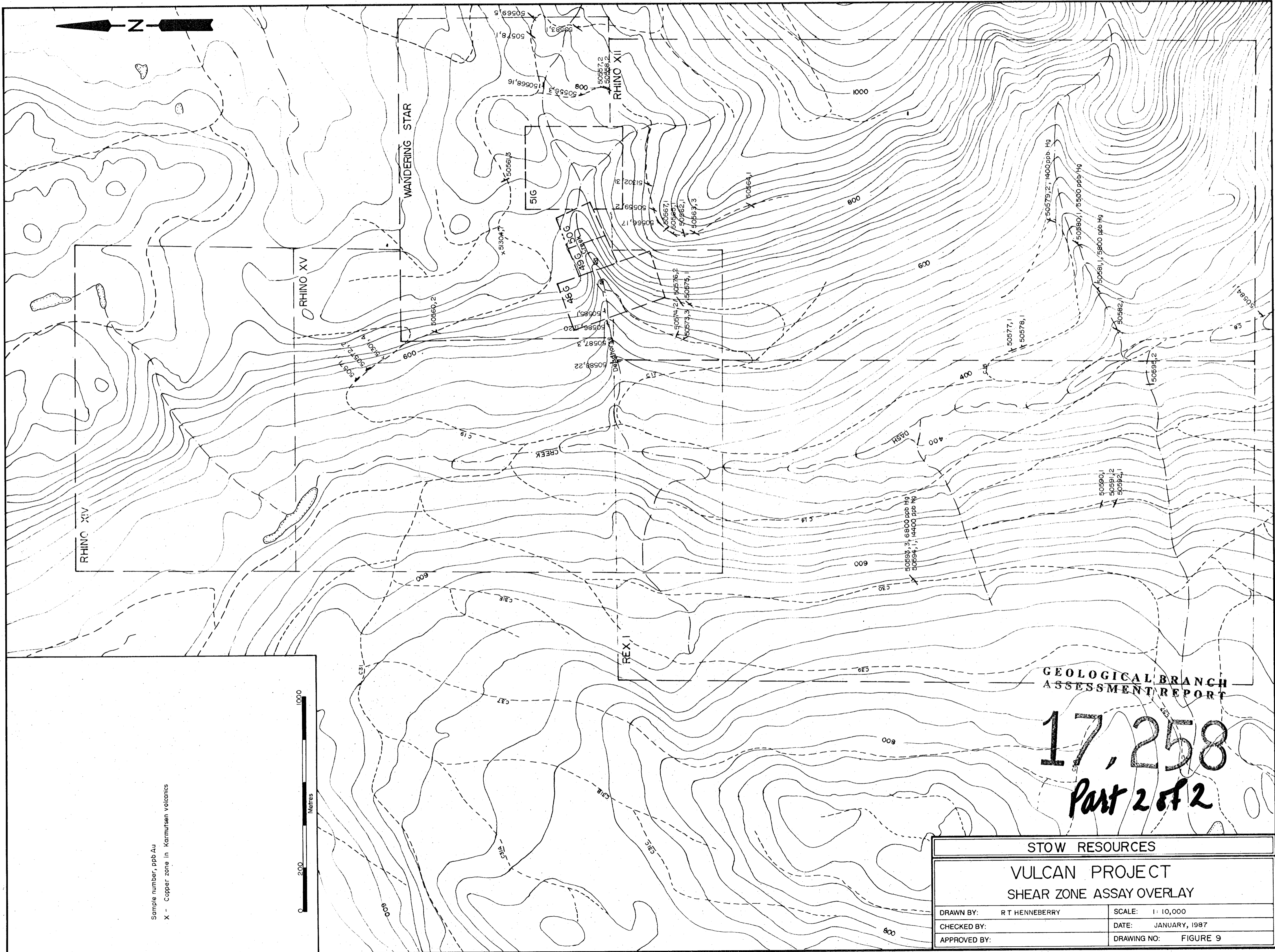


STOW RESOURCES LTD

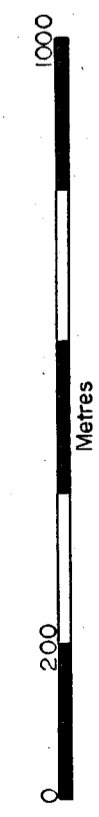
VULCAN PROPERTY  
LONGITUDINAL SECTION  
VULCAN SHEAR ZONE

DR. BY: RT HENNEBERRY  
DATE: OCTOBER, 1986  
CHK'D. BY:  
DWG. NO: FIGURE 8

SCALE: 1: 250  
APPRD. BY:  
REV:



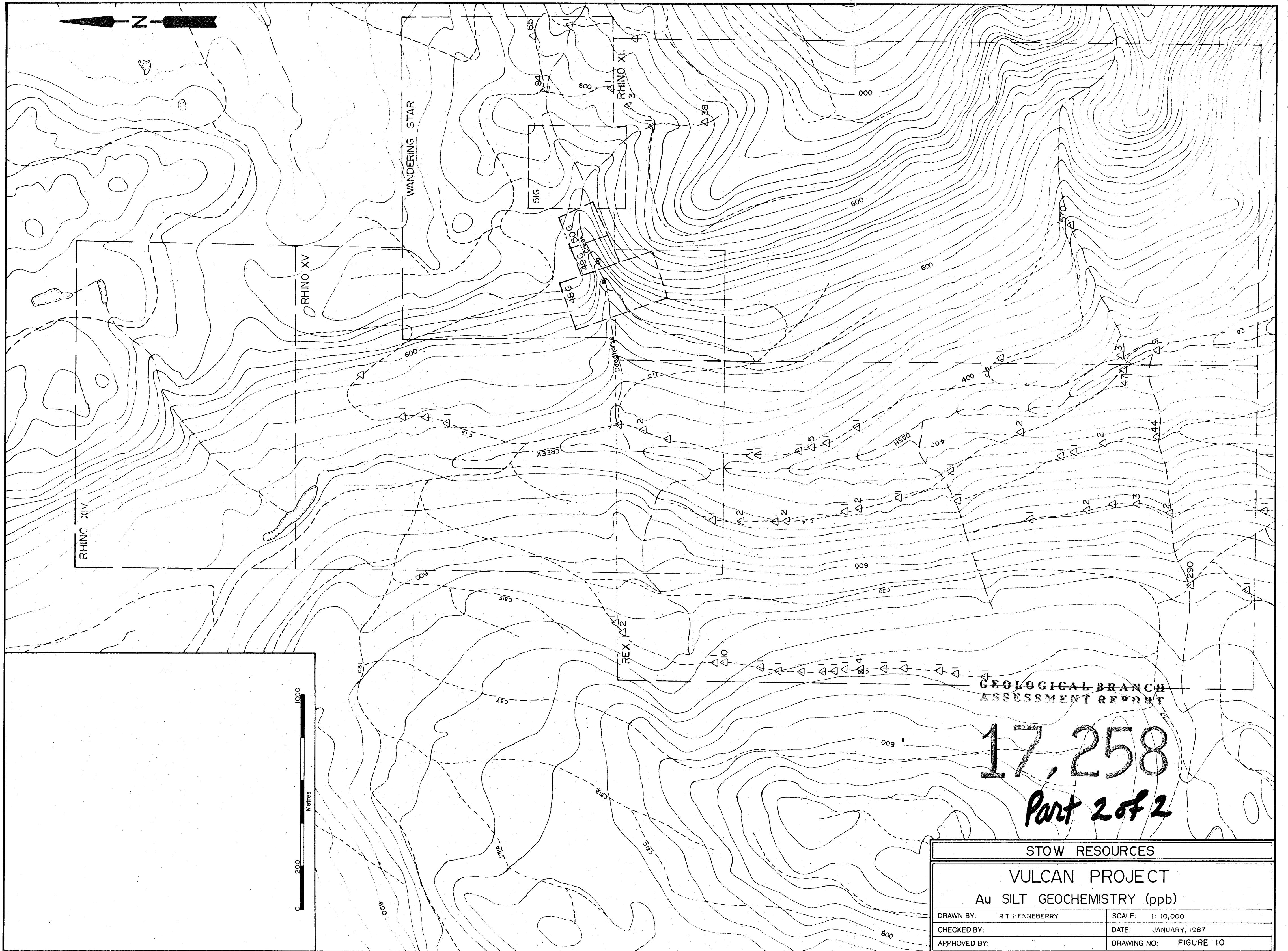
Sample number, ppb Au  
 X - Copper zone in Karmutsen volcanics



GEOLOGICAL BRANCH  
 ASSESSMENT REPORT

17,258  
 Part 2 of 2

|                          |                      |
|--------------------------|----------------------|
| STOW RESOURCES           |                      |
| VULCAN PROJECT           |                      |
| SHEAR ZONE ASSAY OVERLAY |                      |
| DRAWN BY: R T HENNEBERRY | SCALE: 1: 10,000     |
| CHECKED BY:              | DATE: JANUARY, 1987  |
| APPROVED BY:             | DRAWING NO: FIGURE 9 |



GEOLOGICAL BRANCH  
ASSESSMENT REPORT

**17,258**  
*Part 2 of 2*

|                            |                       |
|----------------------------|-----------------------|
| STOW RESOURCES             |                       |
| VULCAN PROJECT             |                       |
| Au SILT GEOCHEMISTRY (ppb) |                       |
| DRAWN BY: R T HENNEBERRY   | SCALE: 1: 10,000      |
| CHECKED BY:                | DATE: JANUARY, 1987   |
| APPROVED BY:               | DRAWING NO: FIGURE 10 |



RHINO XIV

WANDERING STAR

UKc  
MURk

GEOLOGICAL BRANCH  
ASSESSMENT REPORT

17,258

Part 2 of 2

- > 238
- 186 - 238
- 134 - 186



STOW RESOURCES

VULCAN PROJECT

E, V GRID: Hg GEOCHEMISTRY (ppb)

DRAWN BY: RT HENNEBERRY

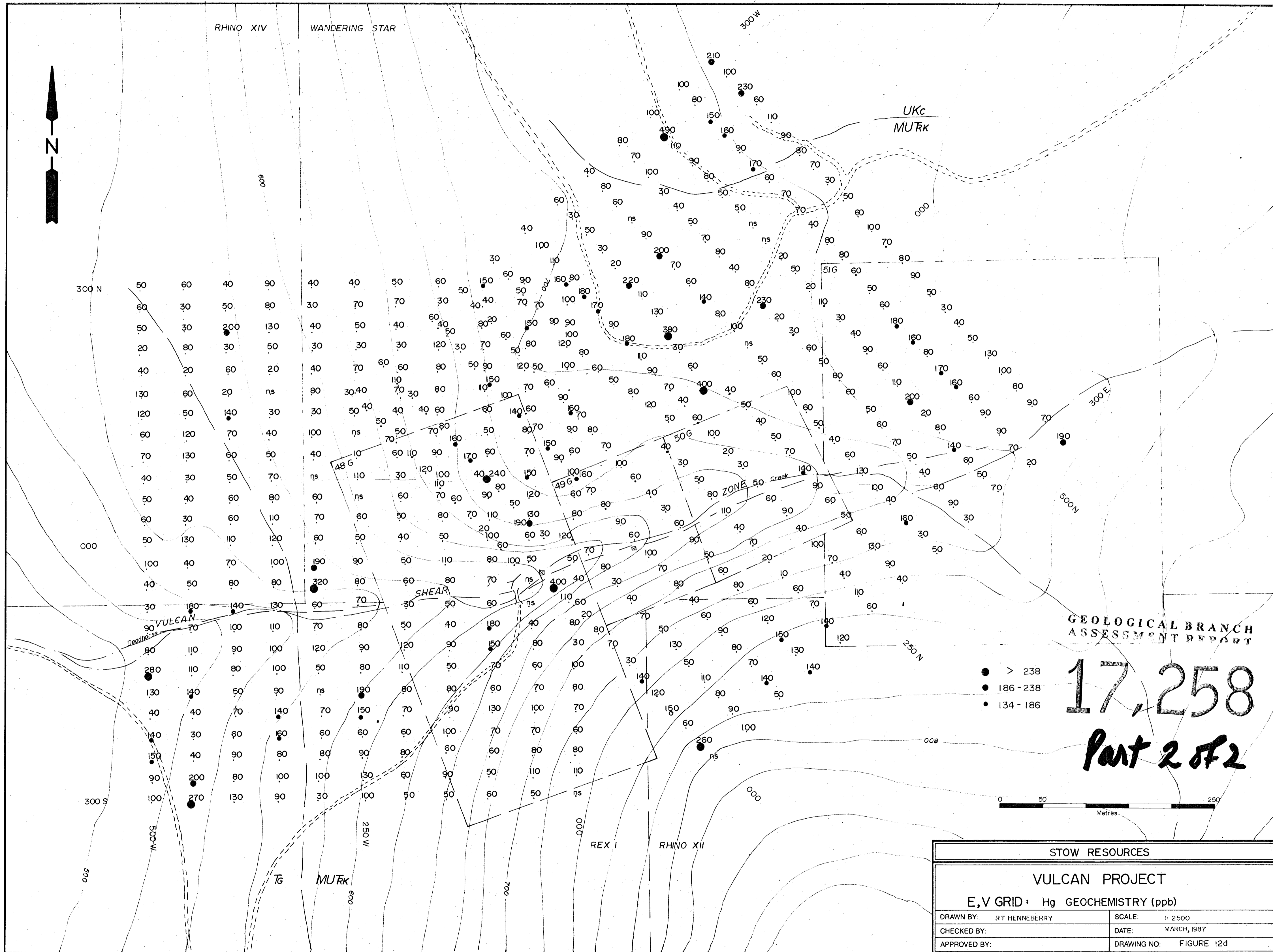
SCALE: 1: 2500

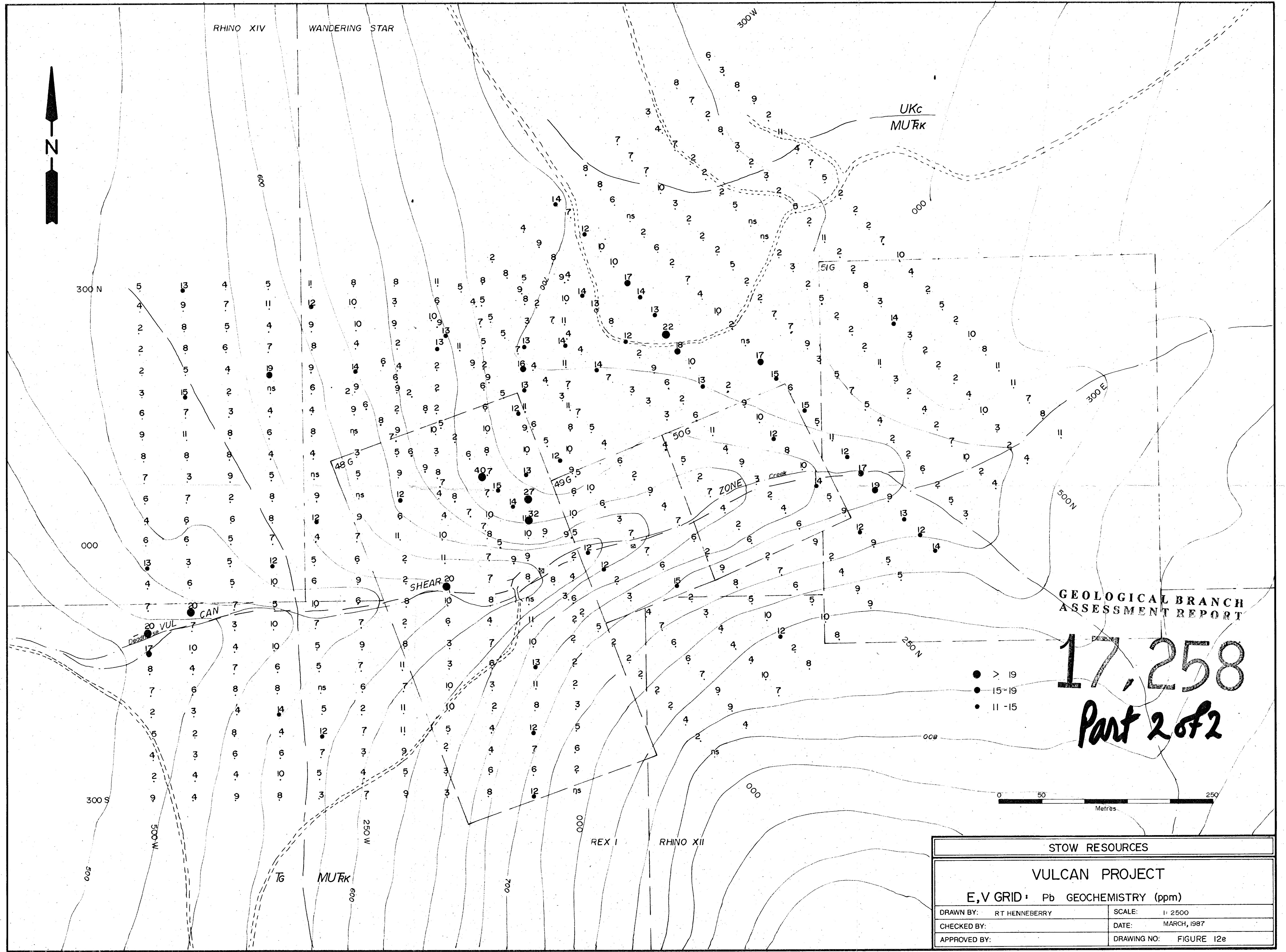
CHECKED BY:

DATE: MARCH, 1987

APPROVED BY:

DRAWING NO: FIGURE 12d





GEOLOGICAL BRANCH  
ASSESSMENT REPORT

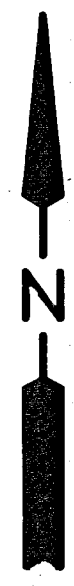
**17,258**  
*Part 2 of 2*

- > 19
- 15-19
- 11-15



|                                 |                        |
|---------------------------------|------------------------|
| STOW RESOURCES                  |                        |
| VULCAN PROJECT                  |                        |
| E,V GRID: Pb GEOCHEMISTRY (ppm) |                        |
| DRAWN BY: R T HENNEBERRY        | SCALE: 1: 2500         |
| CHECKED BY:                     | DATE: MARCH, 1987      |
| APPROVED BY:                    | DRAWING NO: FIGURE 12e |





RHINO XIV

WANDERING STAR

300W

UKC  
MURK

300 N

000

000

300 E

500 N

48 G

49 G

50 G

51 G

000

SHEAR

Creek  
ZONE

250 N

VULCAN  
Deadhorse

GEOLOGICAL BRANCH  
ASSESSMENT REPORT

17,258

Part 2 of 2

- > 0.5
- 0.4 - 0.5
- 0.3 - 0.4



300 S

500 W

250 W

REX I

RHINO XII

TG

MURK

700

STOW RESOURCES

VULCAN PROJECT

E, V GRID: Ag GEOCHEMISTRY (ppm)

DRAWN BY: RT HENNEBERRY

SCALE: 1: 2500

CHECKED BY:

DATE: MARCH, 1987

APPROVED BY:

DRAWING NO: FIGURE 12b



RHINO XIV

WANDERING STAR

300 W

UKc  
MURk

300 N

300

000

300 E

500

000

250 N

GEOLOGICAL BRANCH  
ASSESSMENT REPORT

**17,258**  
*Part 2 of 2*

- > 112
- 77-112
- 40-77



SHEAR

ZONE

VULCAN

Death

300 S

500 W

250 W

REX I

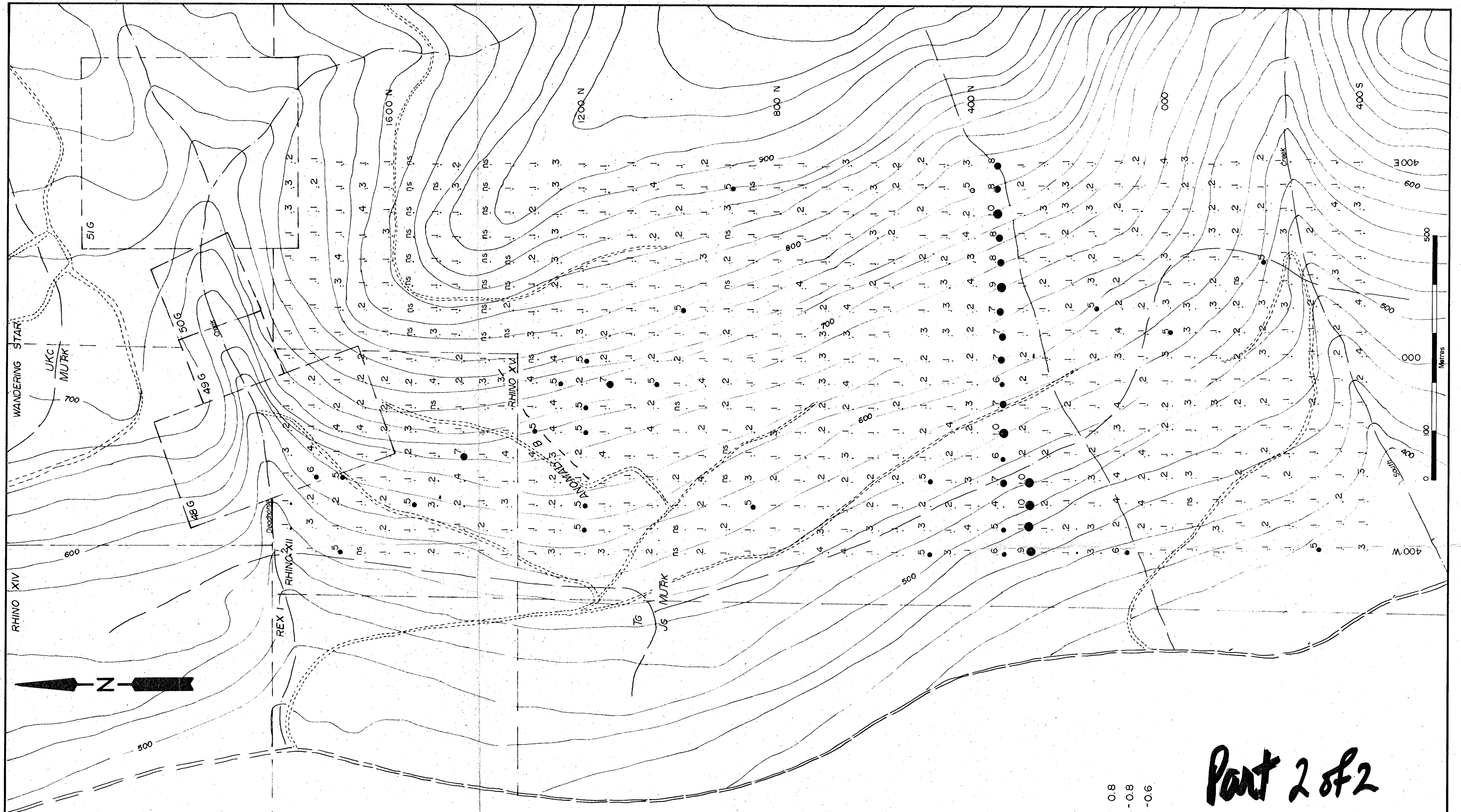
RHINO XII

MURk

|                                 |                        |
|---------------------------------|------------------------|
| STOW RESOURCES                  |                        |
| VULCAN PROJECT                  |                        |
| E,V GRID: Au GEOCHEMISTRY (ppb) |                        |
| DRAWN BY: RT HENNEBERRY         | SCALE: 1:2500          |
| CHECKED BY:                     | DATE: MARCH, 1987      |
| APPROVED BY:                    | DRAWING NO: FIGURE 12a |







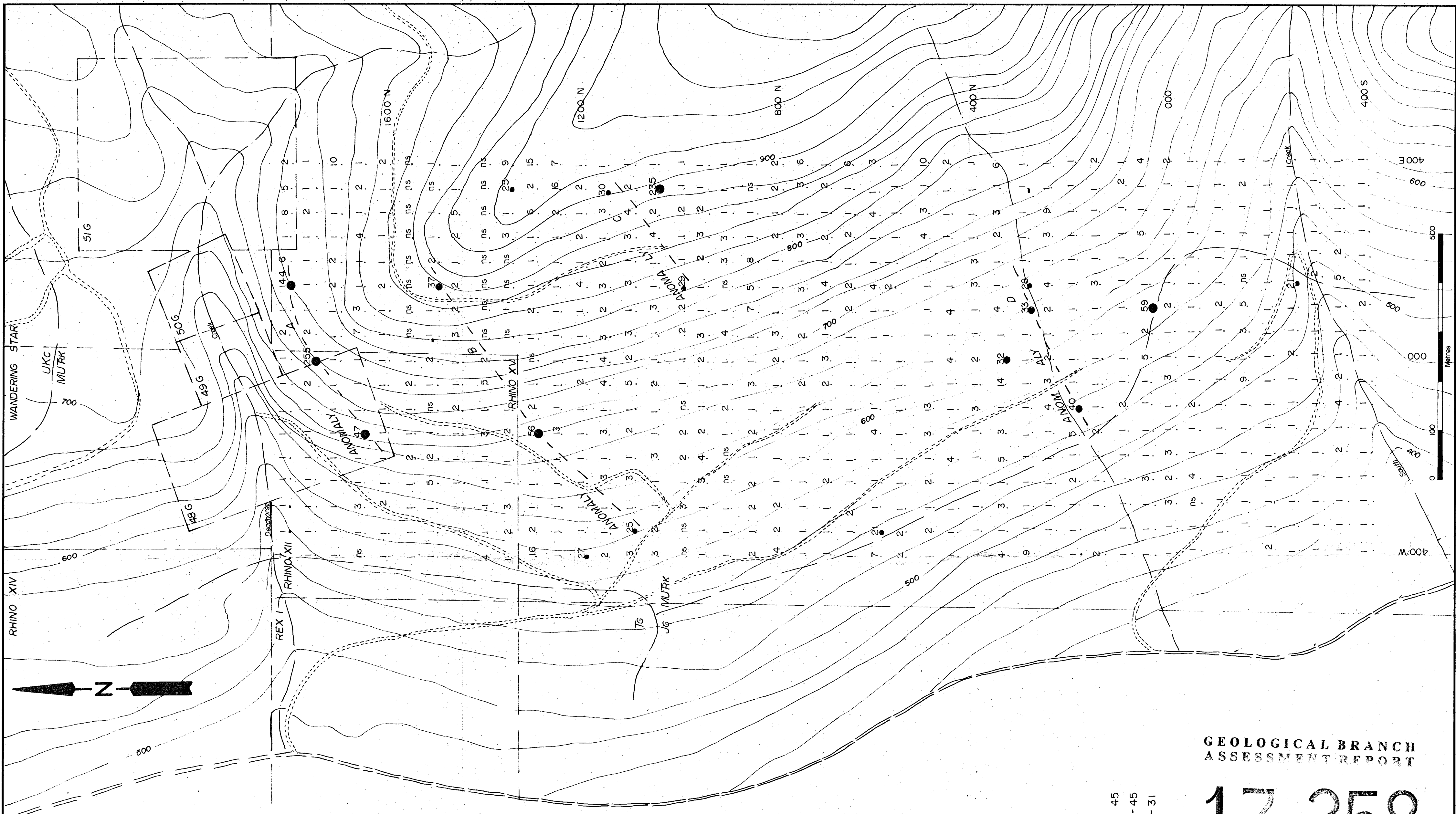
- > 0.8
- 0.6-0.8
- 0.4-0.6

*Part 2 of 2*

GEOLOGICAL BRANCH  
ASSESSMENT REPORT

17,258

|                                |                        |
|--------------------------------|------------------------|
| STOW RESOURCES                 |                        |
| VULCAN PROJECT                 |                        |
| A GRID : Ag GEOCHEMISTRY (ppm) |                        |
| DRAWN BY: RT HENNEBERRY        | SCALE: 1: 5000         |
| CHECKED BY:                    | DATE: MARCH, 1987      |
| APPROVED BY:                   | DRAWING NO: FIGURE 11b |



GEOLOGICAL BRANCH  
ASSESSMENT REPORT

• • •  
> 45  
31 - 45  
17 - 31

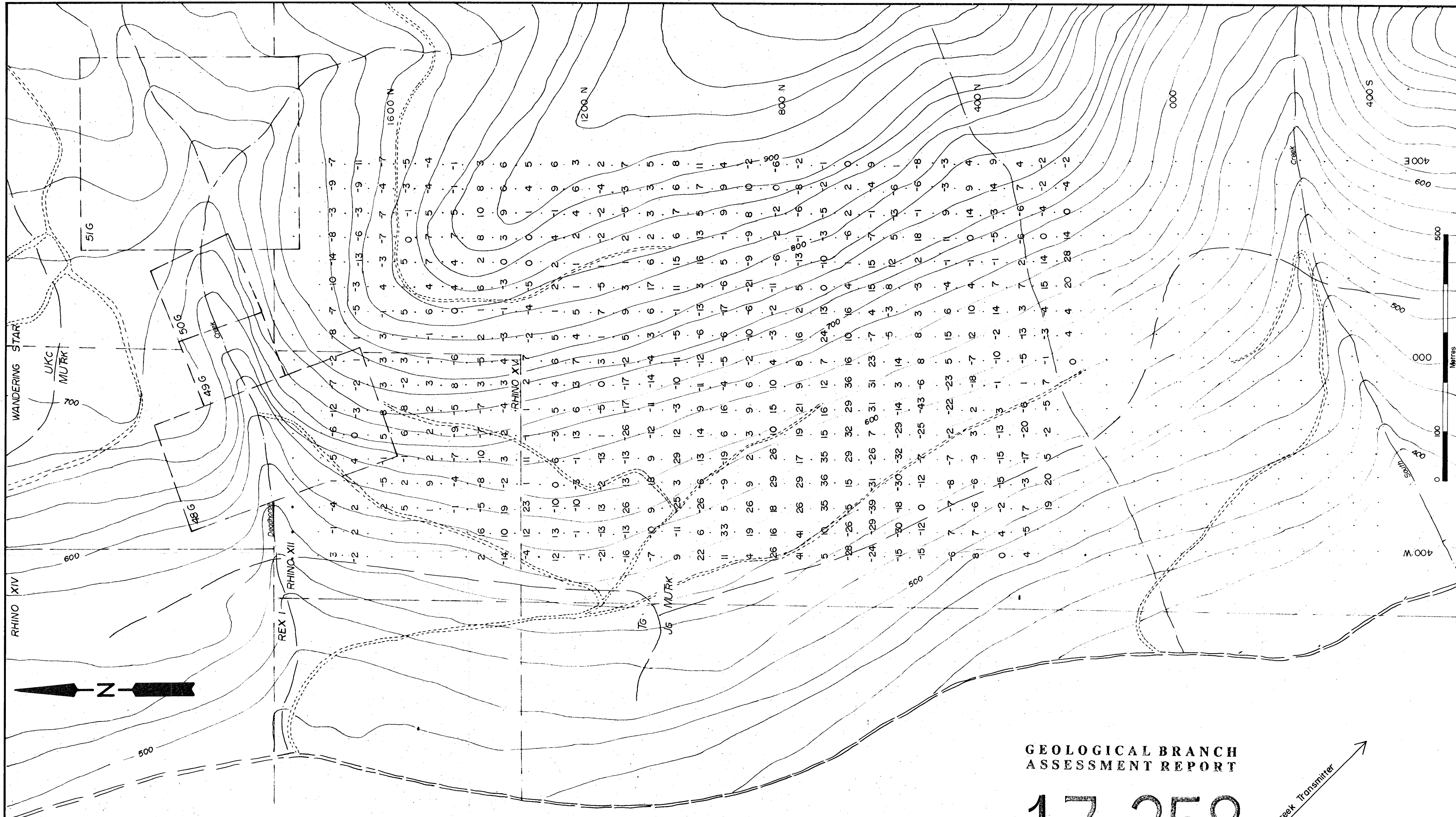
17,258

Part 2 of 2

|                               |                        |
|-------------------------------|------------------------|
| STOW RESOURCES                |                        |
| VULCAN PROJECT                |                        |
| A GRID: Au GEOCHEMISTRY (ppb) |                        |
| DRAWN BY: RT HENNEBERRY       | SCALE: 1: 5000         |
| CHECKED BY:                   | DATE: MARCH, 1987      |
| APPROVED BY:                  | DRAWING NO: FIGURE 11a |







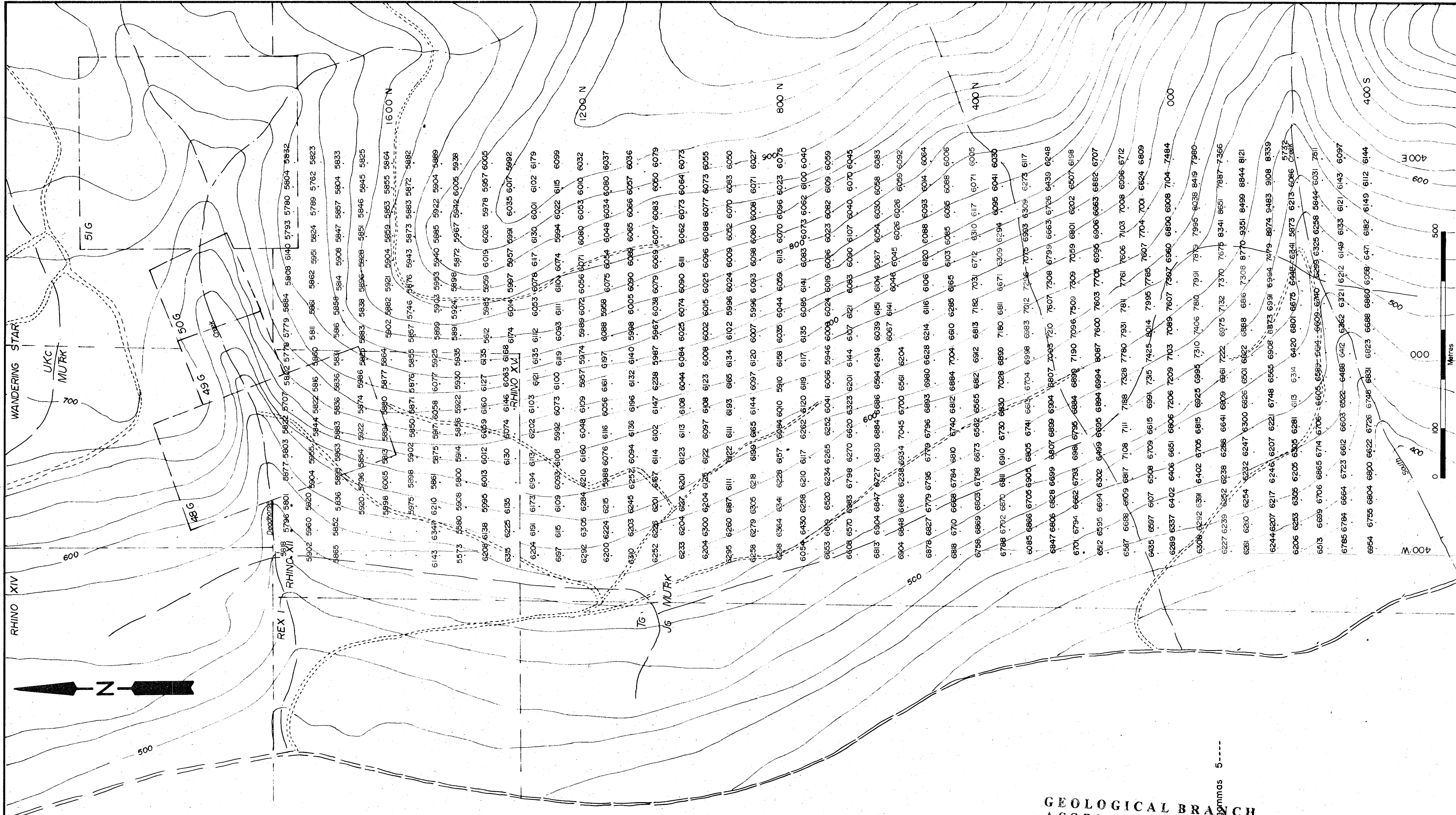
GEOLOGICAL BRANCH  
ASSESSMENT REPORT

17,258

Part 2 of 2

To Jimmy Creek Transmitter

|  |                        |
|--|------------------------|
| STOW RESOURCES                                     |                        |
| VULCAN PROJECT<br>A GRID: FRASER FILTERED VLF DIPS |                        |
| DRAWN BY: RT HENNEBERRY                            | SCALE: 1: 5000         |
| CHECKED BY:  | DATE: MARCH, 1987      |
| APPROVED BY:                                       | DRAWING NO: FIGURE IIf |



GEOLOGICAL BRANCH  
ASSESSMENT REPORT

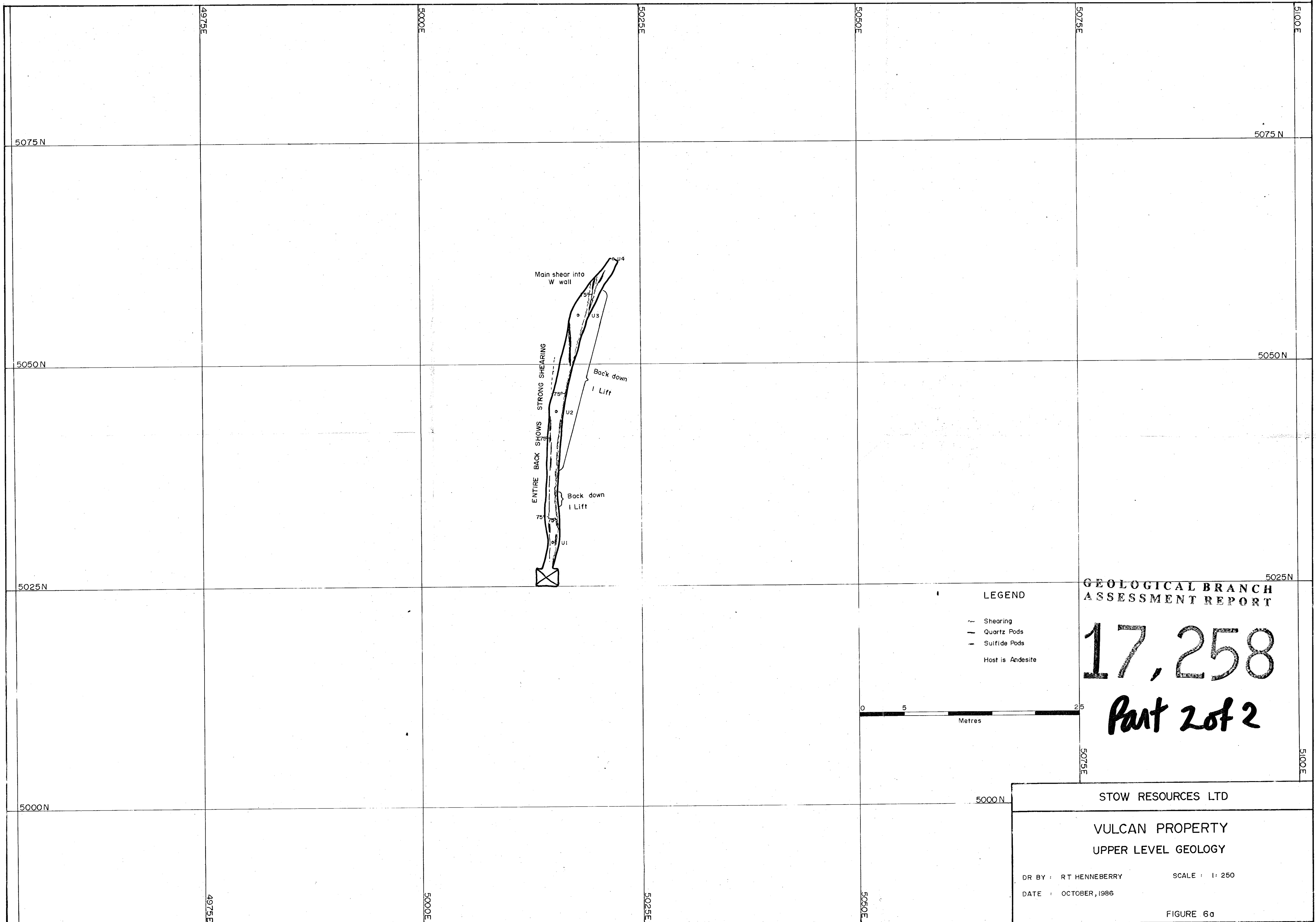
17,258

Part 2 of 2

Values in gammas 5-----

|                             |                        |
|-----------------------------|------------------------|
| STOW RESOURCES              |                        |
| VULCAN PROJECT              |                        |
| A GRID: PROTON MAGNETOMETER |                        |
| DRAWN BY: RT HENNEBERRY     | SCALE: 1: 5000         |
| CHECKED BY:                 | DATE: MARCH, 1987      |
| APPROVED BY:                | DRAWING NO: FIGURE 11g |





GEOLOGICAL BRANCH  
ASSESSMENT REPORT

**17,258**  
**Part 2 of 2**

LEGEND

- ~ Shearing
- Quartz Pods
- Sulfide Pods
- Host is Andesite



|  |                |
|--|----------------|
| STOW RESOURCES LTD                     |                |
| VULCAN PROPERTY<br>UPPER LEVEL GEOLOGY |                |
| DR BY : RT HENNEBERRY                  | SCALE : 1: 250 |
| DATE : OCTOBER, 1986                   | FIGURE 6a      |