

ARIS SUMMARY SHEET

District Geologist, Smithers

Off Confidential: 89.02.15

ASSESSMENT REPORT 17363

MINING DIVISION: Omineca

PROPERTY: Bonnie  
LOCATION: LAT 55 19 00 LONG 127 38 00  
UTM 09 6130666 586734  
NTS 093M05E

CLAIM(S): Marwill 2  
OPERATOR(S): Tri-Con Min.  
AUTHOR(S): Homenuke, A.  
REPORT YEAR: 1988, 12 Pages

COMMODITIES

SEARCHED FOR: Silver, Gold, Copper, Lead, Zinc

GEOLOGICAL

SUMMARY: Silver, gold, copper, lead and zinc sulphides occur in quartz veins cutting Bowser Group sandstones in the area. The drilling intersected pyritic quartz veins, but no other mineralization.

WORK

DONE: Drilling  
DIAD 67.1 m 2 hole(s)

RELATED

REPORTS: 08906, 10189, 13181, 13440, 14135, 14840, 15891

LOG NO: 0512	RD.
ACTION:	
12 p	
FILE NO:	

**1987 DIAMOND DRILLING**

on the

**BONNIE GROUP**

(Bonnie, Marwill No. 1 & 2, G and R 5-8, Dale 1-4,  
Speculator and Mt. Glen, Mineral Claims)

Omineca Mining Division

93 M/5E

55° 19' N 127° 38' W

(North of Hazelton, B.C.)

Owner and Operator: Tri-Con Mining Ltd.

Writer: A.M. Homenuke, P. Eng. (Geol.)

Submitted: May 4, 1988

**GEOLOGICAL BRANCH  
ASSESSMENT REPORT**

**17,363**

## I. INTRODUCTORY NOTES

### Location and Access

The Bonnie Claim Group covers an area from the southern and western slopes of Mount Glen, adjoining the Silver Standard Mine, to the Skeena River on the West and is centered about 6 km. north-northeast of Hazelton, B.C. (Fig. 1). Access to the west side of the claims is provided by the recently relocated Salmon River Road which branches off the Hazelton-Kispiox Highway. The Silver Standard Mine Road passes through the center of the claim group, and old mining and logging roads provide local, in part 4-wheel drive, access.

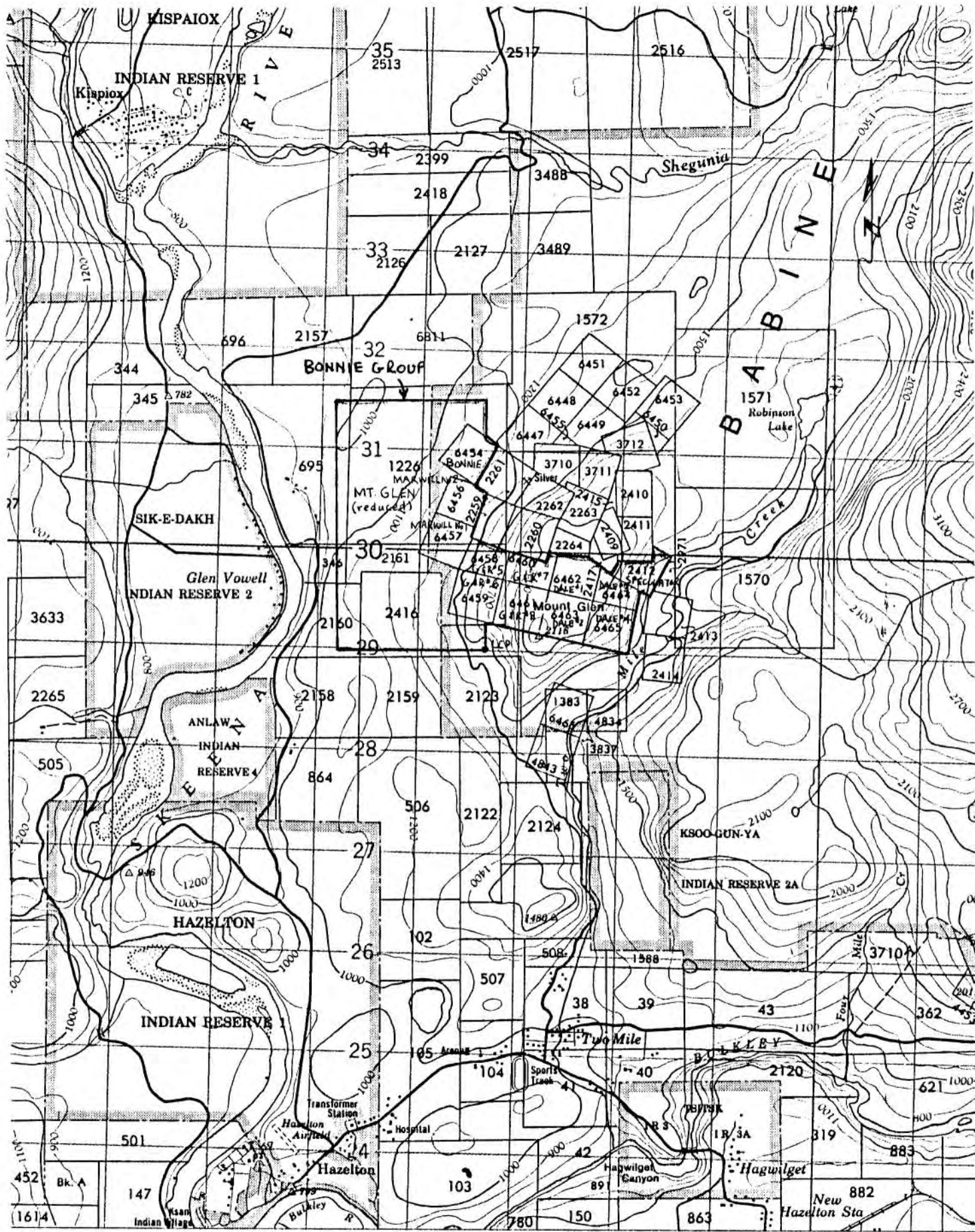
### Physical Features

Mount Glen, elevation 645 metres, is located on the southeast portion of the claim group. The mountain has a relatively flat top about 700 metres wide, then drops steeply to Two Mile Creek on the east and the Silver Standard Mine Road on the west. The area between the Mine Road and the Skeena River on the west side of the claims is relatively flat in general aspect, but locally made up of abrupt ridges and gullies with swamps in many of the low areas. The river is at an elevation of 230 metres. Outcrops are scarce to non-existent except along the southern 500 metres of the claims and on the slopes of Mount Glen.

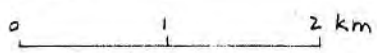
The area is covered by a mixed coniferous-deciduous forest, in part second growth after a fire at the turn of the century, except along the Skeena River where it is cleared for farming. Much of the area was selectively logged for cedar poles and there are marketable stands of cedar and spruce remaining. The deciduous growth consists of birch, poplar and alder and represents about 20% of the forest. Undergrowth is moderate and in general does not impede foot travel, however there are many small and few large swamps which inhibit access to some degree.

### Property Description

The Bonnie Group consists of 13 reverted crown grants, which were formerly part of the Silver Standard Mine holdings, and one located claim. (Fig. 1.) Table I below summarizes the claim data.



Part of 93M/5E



TRI-CON MINING LTD.  
 BONNIE PROPERTY  
 CLAIM & INDEX MAP

FIG. 1

TABLE I. BONNIE GROUP

Name	Lot No.	Record No.	Units	Year Acquired	Record Date
Bonnie	6454	305	1	1976	June 3
Marwill No. 1	6457	306	1	1976	June 3
Marwill No. 2	6456	307	1	1976	June 3
G & R No. 5	6458	2468	1	1980	Feb. 15
G & R No. 6	6459	2469	1	1980	Feb. 15
G & R No. 7	6460	2470	1	1980	Feb. 15
G & R No. 8	6461	2471	1	1980	Feb. 15
Dale No. 1	6462	2472	1	1980	Feb. 15
Dale No. 2	6463	2473	1	1980	Feb. 15
Dale No. 3	6464	2474	1	1980	Feb. 15
Dale No. 4	6465	2475	1	1980	Feb. 15
Speculator	2412	2476	1	1980	Feb. 15
Mt. Glen (reduced)		2490	15	1980	Feb. 25

Owner and Operator is Tri-Con Mining Ltd., of Vancouver, B.C.

#### History

The adjoining Silver Standard Mine has been in operation since 1910, with major production during the period 1918 - 1922 and 1948 - 1958. It is presently being operated by a lessee, shipping a few railcar loads of ore per year.

Total production was about 200,000 tons yielding over 7.5 million ounces of silver plus gold, lead, zinc, copper, and cadmium.

The Bonnie Group consists partially of reverted Crown-granted mineral claims which were once part of the Silver Standard Mine holdings. Old cat trenches and cut lines are present, but no records of work are available. A quartz vein with minor sulfides has been exposed on the southwest part of the claim group (National Ex Area). This was explored around 1950 by National Exploration Ltd. Tri-Con did limited work on this area in 1978 and 1980 and a more extensive exploration program in 1981.

On the Bonnie - Marwill Area, immediately west of the Silver Standard Mine, Tri-con has been exploring for a parallel continuation of the sequence of veins at the mine. VLF-EM surveying has been the primary tool; followed by backhoe trenching and, in 1981, & 1985, by diamond drilling.

The claim group was expanded to the north in 1983 to cover an intrusive on the south side of the Shegunia River and some small sulfide bearing quartz veins on the north side of the river. This area was explored by geochemical and VLF-EM surveys and allowed to lapse due to disappointing results. During 1983-1987, geochemical and VLF-EM surveys were continued on the present claim area.

The EM survey was extended to cover a portion of the Silver Standard veins to aid interpretation of the results.

#### Economic Assessment

The historic production of the Silver Standard Mine at present metal prices, would be over 100 million dollars. The westerly limit of the known veins is also the point at which glacial overburden becomes substantially deeper.

None of the old Silver Standard cat trenches in this area reached bedrock. Previous VLF-EM surveying indicated possible vein structures. Recent drilling of such EM targets showed the presence of two veins, one of which, though narrow where intersected, was identical to the production veins on the adjoining mine. The results of this drilling greatly enhance the geologic potential of at least this part of the Bonnie property.

## II. DIAMOND DRILLING

Two holes totalling 67.1 metres (Fig. 2) were drilled with a "Winkie" drill recovering a 25 mm core. The work was contracted by Van Alphen Explorations Services. The holes were drilled as a continuation of earlier drilling in 1981 and 1985 to test VLF-EM anomalies similar to ones on the adjoining Silver Standard Mine Property.

BON-87-1 was drilled on section with BON-85-2 (See Fig. 3) to a depth of 30.5 m. The hole intersected the vein as projected but it only contained pyrite and quartz. No assay samples were taken.

BON-87-2, due to mis-communication, was drilled east of BON-85-1 rather than to the west as planned. No significant intersections were encountered to the depth of 36.6 m.

The logs are as follow:

BON-87-1 BRG. 300° DIP -50° COLLAR ELEV. 384 M.

0-6 m overburden

6-13.5 m med. gray, fine-med. grained tuffaceous sandstone becomes bleached and silicified with depth. few qtz. veins to 1 cm w/minor pyrite, arsenopyrite.

13.5-13.65 m qtz vein, 15 cm, 30% pyrite, minor arsenopyrite  
55° to core axis

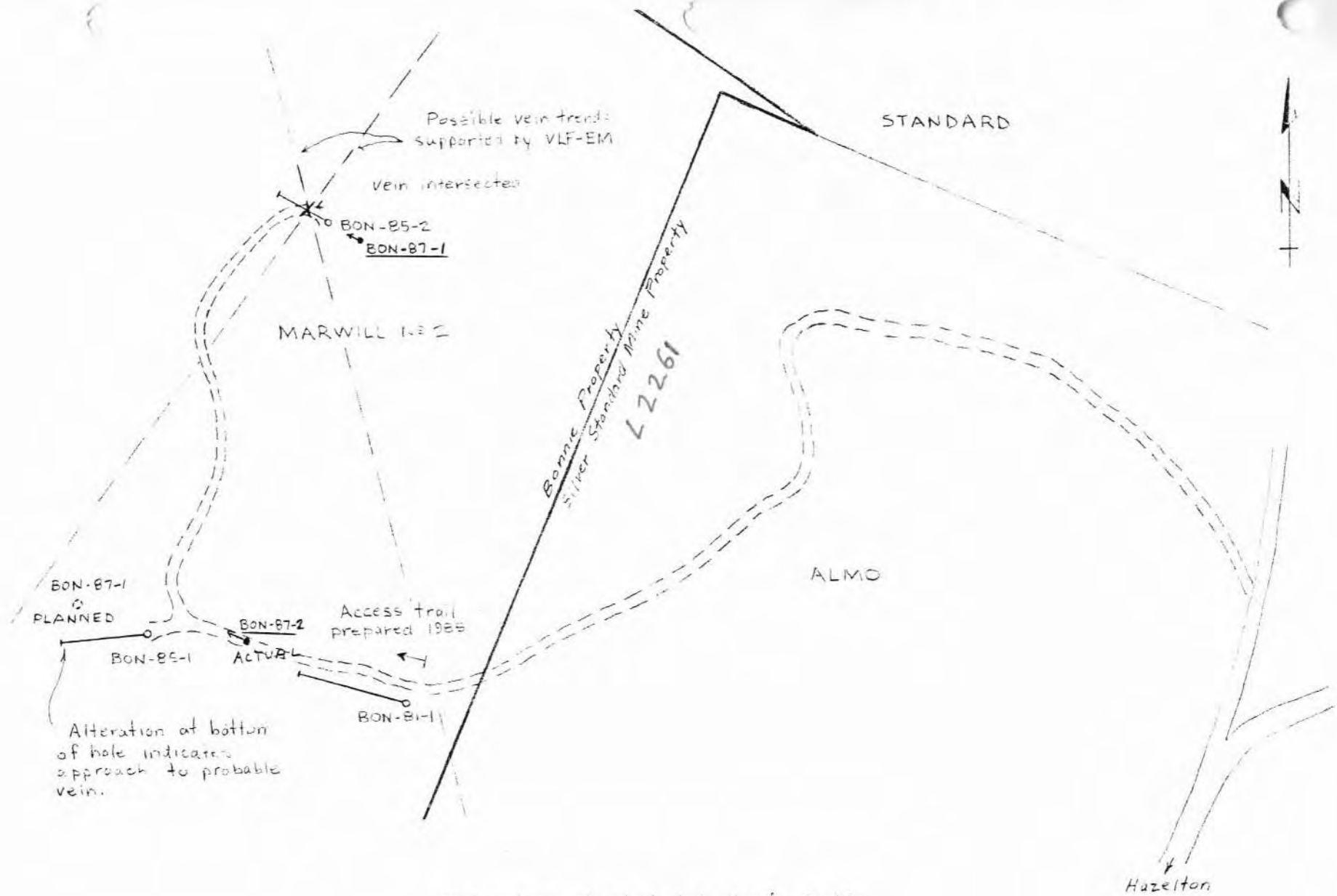
13.65-30.5 m same as 6-13.5 m, alteration decreases with depth, few 1-2 cm qtz with minor pyrite veins.

BON-87-2 BRG 300° DIP -50° COLLAR ELEV. 378 M.

0-9.5 M overburden

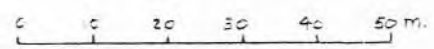
9.5-36.6 med. gray, fine-med. grained tuffaceous sandstone few 1-3 cm qtz-siderite veins with sulfides minor weak alteration.

The core is stored in Smithers and will be returned to the drill sites during the 1988 field season.



- Diamond drill hole
- 1987 Drilling

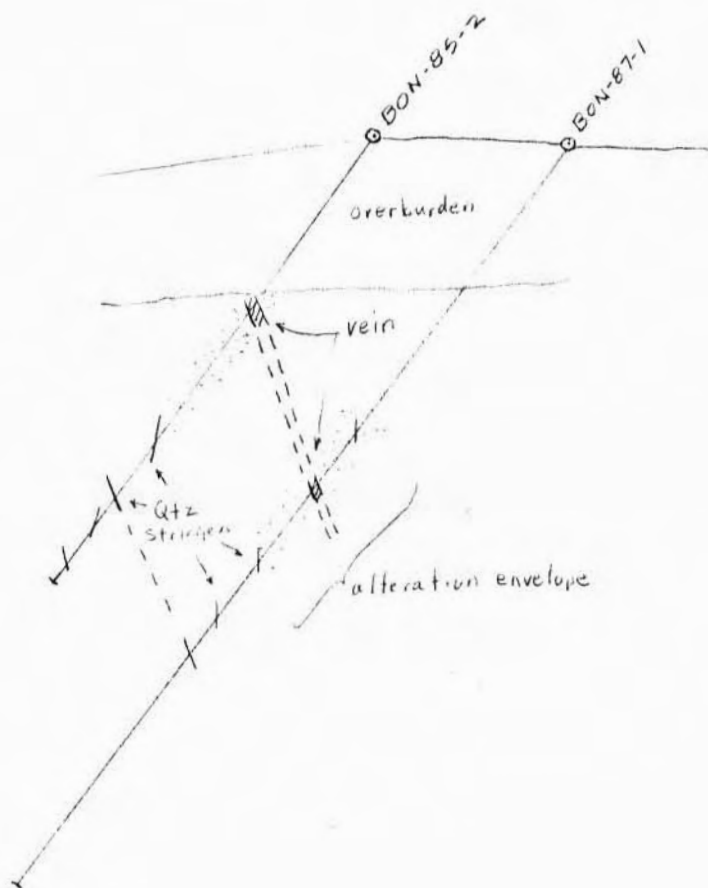
Note: Core stored at drill sites for 81 & 85  
Temporarily in Smithers for 87-1,2



TRI-CON MINING LTD.  
BONNIE PROPERTY  
DRILL HOLE PLAN

Prepared by: A.M. Homenuke, P.Eng.  
Nov. 1985  
Additions May, 1988

FIG 2



CROSS SECTION  
(looking north  
BON-85-2, 87-1

FIG. 3

III            CONCLUSIONS & RECOMMENDATIONS

Drill hole BON-87-1 intersected the same vein as BON-85-2, with non-economic intersections. Drill hole BON-87-2 was drilled east of BON-85-1 rather than west, as planned. BON-85-1 was abandoned, in a zone of intense alteration, due to drilling problems. BON-87-2 should be redrilled as previously planned, as the above alteration may represent a significant vein.

Respectfully Submitted,  
TRI-CON MINING LTD.

A handwritten signature in dark ink, appearing to read "A.M. Homenuke". The signature is written in a cursive style with some loops and flourishes. It is positioned to the right of the typed name below.

A.M. Homenuke, P. Eng.  
Senior Vice-President

**COST STATEMENT**

November 20 - December 10, 1987

Diamond Drilling 67.1 meters in two holes contractors invoice	\$ 6 500.00
A. Homenuke, P. Eng., report, maps 1 Day	400.00
Assistant - 1 Day	150.00
Secretarial, copying, misc.	<u>100.00</u>
	\$ 7 150.00 =====

## REFERENCES

Black, J.M. 1950, Glen and Nine Mile Mountains area, B.C., B.C.  
Mine of Mines Ann. Rept.

Homenuke, A.M., 1978-1987, Various assessment reports.

Kindle, E.D., 1954, Hazelton and Smithers Area, G.S.C. Mem. 223


Richards, T.A., 1980, G.S.C. Open File Map No. 720

**CERTIFICATE OF QUALIFICATION**

I, Alexander M. Homenuke, do hereby certify:

1. THAT I am a member in good standing of the Association of Professional Engineers of British Columbia.
2. THAT I received the Degree of Bachelor of Science in Geological Engineering from the Colorado School of Mines in 1974.
3. THAT I received a Diploma of Technology in Mining from the B.C. Institute of Technology in 1969.
4. THAT I have been employed in various aspects of mining exploration for 19 years and am presently employed by Tri-Con Mining Ltd., of Suite 2580, 1066 West Hastings Street, Vancouver, British Columbia.
5. THAT I presently reside at 29825 Harris Road, Mt. Lehman, British Columbia.
6. THAT this Report is based on work supervised or conducted by myself.

DATED at Vancouver, British Columbia, this 4th day of May 1988.

  
\_\_\_\_\_  
A.M. Homenuke, P. Eng.  
Geological Engineer