

ARIS SUMMARY SHEET

District Geologist, Victoria

Off Confidential: 89.04.06

ASSESSMENT REPORT 17406

MINING DIVISION: Alberni

PROPERTY: Ni  
LOCATION: LAT 48 53 22 LONG 124 42 17  
UTM 10 5416347 375035  
NTS 092C15E

CLAIM(S): Ni 1-3  
OPERATOR(S): Lucky 7 Ex.  
AUTHOR(S): Mehner, D.  
REPORT YEAR: 1988, 29 Pages

COMMODITIES  
SEARCHED FOR: Copper, Lead, Zinc, Silver, Gold

GEOLOGICAL  
SUMMARY: Mafic to felsic tuffs and flows of the Upper Triassic Karmutsen Formation are interbedded with mudstone and limestone units. Copper-lead-zinc-silver-gold mineralization occurs in massive sulphide lenses and along shear zones.

WORK  
DONE: Geochemical, Geophysical  
EMGR 5.3 km; VLF  
Map(s) - 1; Scale(s) - 1:5000  
LINE 23.6 km  
Map(s) - 1; Scale(s) - 1:5000  
SOIL 880 sample(s); CU, PB, ZN, AG, AU  
Map(s) - 3; Scale(s) - 1:5000

RELATED  
REPORTS: 13706  
MINFILE: 092C 061, 092C 092

0505	RD.
FILE NO:	

ASSESSMENT REPORT ON A  
 VLF GEOPHYSICAL SURVEY  
 AND  
 SOIL GEOCHEM SAMPLING OF THE NI 1, 2 AND 3 CLAIMS

FILMED

LITTLE NITINAT RIVER AREA  
 ALBERNI MINING DIVISION, BRITISH COLUMBIA

N.T.S. 92C - 15E

LATITUDE: 48° 52' N LONGITUDE: 124° 41' W  
 GEOLOGICAL BRANCH  
 ASSESSMENT REPORT

17,406

LUCKY 7 EXPLORATION LTD.  
 308 - 1155 West Pender Street  
 Vancouver, B.C.  
 V6E 2P4

APR 17 1988
MR. ...
...

April 1988

David Mehner F.G.A.C.  
 Consulting Geologist

## TABLE OF CONTENTS

SUMMARY	1
INTRODUCTION	1
LOCATION AND ACCESS	2
TOPOGRAPHY AND VEGETATION	3
PROPERTY AND OWNERSHIP	3
PREVIOUS WORK	4
GEOLOGY	5
i) Regional	5
ii) Property	6
a) Lithology	6
b) Structure	6
c) Mineralization	7
GEOCHEMISTRY	8
i) Soils	8
ii) Rocks	11
GEOPHYSICS	11
i) VLF	11
CONCLUSIONS	12
RECOMMENDATION	12
REFERENCES	13

## APPENDICES

- A. Cu-Pb-Zn-Ag-Au-As Soil Geochem Results
- B. Statement of Expenditures
- C. Statement of Qualifications

## PLATES

- 1. Ni Property Location Map
- 2. Ni Property Map
- 3. Ni Property Compilation; 1:5000
- 4. Au-Ag Soil Geochem Survey; 1:5000
- 5. Pb-Zn Soil Geochem Survey; 1:5000
- 6. As-Cu Soil Geochem Survey; 1:5000
- 7. VLF Survey

## SUMMARY

The Ni Property is a base and precious metals target located in Karmutsen volcanics 40 kms south of Port Alberni on Vancouver Island. Work on the east side of the property by previous owners in 1979 and 1980 identified massive sulphide mineralization containing significant Au, Ag and Cu values in the Copper Zone and fault controlled mineralization having significant Au, Ag, Pb and Zn mineralization in the Camp Zone. Subsequent soil geochem surveys by Falconbridge Ltd. identified significant Ag, Pb and Zn anomalies on the west side of the property. Since acquiring the property, Lucky 7 Exploration Ltd. has carried out a soil geochem survey west of the Little Nitinat River confirming and defining the soil anomalies identified by Falconbridge Ltd. The work has also identified a zone which appears parallel to bedding, contains coincident anomalous Au, Ag, Cu, Pb and Zn values in soil and strikes SE into the Camp Zone over a 1.3 km distance.

A program of detailed mapping followed by trenching and diamond drilling is recommended to further test this and other anomalies.

## INTRODUCTION

The Ni property was optioned in the spring of 1987 by Lucky 7 Exploration Ltd. after a brief examination of surface showings and reviewing the highly encouraging soil geochem results obtained by Falconbridge Ltd. in earlier work.

Between August 14 and September 3, 1987 a soil geochem survey was conducted over the NW part of the property to confirm results from previous surveys and to further define and extend these anomalies.

To facilitate this program the old Falconbridge Ltd. baseline (300<sup>0</sup>) west of the Little Nitinat River was re-flagged and 18 new lines totalling 23.6 km were put in between the Falconbridge lines at 75 metre spacings.

As part of the program the property was to be prospected and a VLF survey carried out but unseasonably warm, dry weather forced closure of the bush and forced the crew to leave before completing this.

Property work was carried out by Lloyd Addie, Dan Tomelin, Brian Emberley and Rip Herzig. Project planning, supervision and report preparation was carried out by David Mehner.

#### LOCATION AND ACCESS

The Ni property is located 40 kms south of Port Alberni, B.C. and 43 kms west of Cowichan Lake along the Little Nitinat River. It is 6 kms north of Nitinat Lake (Plate 1).

Access is provided by logging roads that head south from Port Alberni through the Franklin Camp and down along the Nitinat

River or by roads that lead to the Nitinat River from Cowichan Lake. All but a few trails or roads on the property are readily accessible to two wheel drive vehicles.

#### TOPOGRAPHY AND VEGETATION

The property is situated along the Little Nitinat River (Plate 2) and ranges in elevation from 150m above sea level along the river at the SE corner of the claim group to 760m above sea level at the NW corner (Plate 3). On the west side of the river the slopes range up to 35° with many steeper sections and cliffs further up the hill. The east side of the river has more moderate relief.

Outcrop is relatively scarce except for the extreme NW corner of the claim block and probably averages less than 20% overall.

Vegetation consists of thick stands of fir, spruce and pine with alder along creeks.

Rainfall is heavy in the winter and spring but summers can be very warm and dry.

Water for drilling purposes can be obtained from a number of small creeks or the Little Nitinat River.

PROPERTY AND OWNERSHIP

The Ni claim group is located in the Port Alberni Mining Division, B.C. and is under option to Lucky 7 Exploration Ltd. of 308 - 1155 West Pender St., Vancouver, B.C. The property consists of the following claims:

<u>CLAIM</u>	<u>RECORD NUMBER</u>	<u>UNITS</u>	<u>REGISTERED OWNER</u>	<u>RECORDING DATE</u>	<u>EXPIRY DATE</u>
Ni 1	2184	20	Ron Bilquist	May 23/84	May 23/88
Ni 2	3175	12	Les Allen	April 6/87	April 6/88
Ni 3	3176	1	Les Allen	April 6/87	April 6/88

PREVIOUS WORK

The first reported work in the area was in 1916 when it's believed the adit 300 metres north of the Camp Zone was driven.

The next major work was in 1967-68 when Belvedere Mines Ltd. carried out geophysical and soil geochem surveys.

Noranda Mines worked the area in 1972-1973 and located several silver-zinc geochem anomalies mainly west of the Little Nitinat River.

In 1978-79 Envoy Resources Ltd. held the property and obtained good gold, zinc, lead and silver values from a couple of showings. Summitt Pass Mining Corp. obtained similarly good results and took the property over in late 1979. They drilled four diamond drill holes (Plate 3), three in the Camp Zone and one, 900 metres to the north before dropping the property.

In 1984 Falconbridge Ltd. optioned the property. They put in 31 km of grid line, geologically mapped the property, conducted a VLF survey and soil sampled the grid at 50 metre intervals. Intermediate soil lines with reduced sample interval spacing were later put in at the NW corner of the Ni claim where sampling had already outlined anomalous zinc, lead and silver values (Hudson and Lear, 1985). Follow-up work in 1985 included further soil and rock sampling in the NW corner of the claims where small sphalerite and galena lenses were found in altered dacites and assays up to 8.45% and 7.31 oz/ton Ag were obtained (Lear, 1986).

Following the merger of Falconbridge Ltd. and Kid Creek Mines the property was returned to its owners.

Lucky 7 Exploration examined the property in the fall of 1986 and optioned it the following spring.

## GEOLOGY

### i) Regional

The property is located in a NW oriented block of Karmutsen Formation sediments and volcanics of the Middle to Late Triassic, Vancouver Group (Muller, 1981). The Karmutsen Formation, which ranges up to 6,000 metres thick in central Vancouver Island consists of brecciated, massive and pillowed tholeiitic ocean



floor lavas with some tuffs and minor interbedded sediments including limestone in the upper 1,100 meters of the section.

To the south early Jurassic, Bonanza Group sediments and volcanics occur. Rocks within this group consist of basalt, andesite and rhyodacite flows, often amygdaloidal, interbedded with maroon and green coloured volcanoclastics.

ii) Property

a) Lithology

Geological mapping of the property was undertaken by Falconbridge geologists in 1984 (Hudson and Lear, 1985). Their work shows the NE and SW portions of the property underlain by a complex assemblage of mafic tuffs and flows interbedded with minor intermediate to felsic flows and tuffs along with limestone and mudstone units. In the central and NW portions of the property where the best potential for mineralization seems to occur intermediate tuffs and flows dominate. Interbedded with them are large lenses of felsic tuffs, flows and limestone.

b) Structure

Bedding measurements throughout the property vary from  $090^{\circ}/84^{\circ}$  S in the northeast to  $161^{\circ}/63^{\circ}$  W in the central to  $110^{\circ}/86^{\circ}$  SW (average readings) in the south. North-south ( $180^{\circ}$  -  $190^{\circ}$ ) faults have been mapped along the Little Nitinat River in the north part of the property and within

200 meters of the River in the southern part of the property.

All rocks within the Ni property have been metamorphosed to low grade greenschist facies. Later argillic alteration which is best developed in felsic volcanics occurs in the west-central part of the property. Intense silicification is reported along some of the larger faults.

c) Mineralization

Mineralization on the property occurs as massive sulphide lenses containing one or more of pyrite, pyrrhotite, chalcopyrite, galena and sphalerite or as shear/fracture zones with pyrite, sphalerite and galena. The Camp Zone (Plate 3) is an example of sulphides occurring along a shear striking 145° dipping SW in a porphyritic volcanic unit. This zone which has seen some drilling has returned highly encouraging results including:

<u>SAMPLER</u>	<u>LOCATION</u>	<u>WIDTH</u> (m)	<u>OZ/TON</u>		<u>% Cu</u>	<u>% Pb</u>	<u>% Zn</u>
			Au	Ag			
J. Poloni (1979)	Surface	2.13	0.050	4.86	.22	7.22	10.90
J. Poloni (1979)	DDH 79-2	1.34	0.038	2.76	.17	6.87	6.61

The Copper Zone, 350 metres to the south, consists of a 1.5 metre wide block of massive sulphide that has been traced at least 10 metres by Falconbridge Ltd. Assays from here include:

<u>SAMPLER</u>	<u>WIDTH</u> (m)	<u>OZ/TON</u>		<u>% Cu</u>	<u>% Pb</u>	<u>% Zn</u>
		Au	Ag			
J. Poloni (1979)	grab	0.051	6.12	5.01	0.16	0.57
Western Mines (1979)	grab	0.020	9.25	6.59	0.03	0.35

## GEOCHEMISTRY

### i) Soils

A soil geochem survey was conducted west of the Little Nitinat River to confirm the highly anomalous values obtained in earlier Falconbridge Ltd. surveys and to define the limits of the anomalies to the north and west.

A total of 880 samples were collected at 25 metre intervals from 23.6 km of new flagged grid line spaced 75 metres apart. All samples were collected from the "B" soil horizon wherever possible. In the few places where soil was poorly developed or missing, samples were taken of any rock detritus present.

Samples were set to Kamloops Research and Assay Laboratory Ltd. in Kamloops, B.C. where they were analyzed for Cu, Pb, Zn, Ag, and Au. As was only analyzed in 129 samples. Sample preparations include air drying of each sample and sieving through an 80 mesh screen. The minus 80 fractions are analyzed using the following techniques:

Cu, Pb, Zn & Ag: Aqua regia digestion followed by AA finish. A background correction on the AA is applied for Pb and Ag.

As: Aqua regia digestion followed by pyridine extraction.

Au: Fire assay. Bead then digested in aqua regia and finished by AA.

The results of the sampling are listed in Appendix A.

Gold values range to 400 ppb, have a mean of 5.7 ppb and standard deviation of 15.6 ppb. Values of 5 ppb or greater are plotted on Plate 4 with values of 35 and over contoured as anomalous. Most anomalies are isolated spot highs and difficult to interpret but between 350N and 525N on lines 485W to 860W a cluster of these highs suggest this area is anomalous and requires further work.

Silver values are quite high, ranging to 20 ppm and having a mean of 0.8 ppm and standard deviation of 1.8 ppm. Values are plotted on Plate 4 with those of 4.0 ppm or greater contoured as anomalous.

As in previous surveys a NW-SE zone between 150N and 600N on lines 485W to 785W contains a substantial number of anomalous values. Two isolated highs between this anomalous zone and the Camp Zone to the SE occur on lines 35W and 110W.

Lead values are relatively high ranging up to 2690 ppm. The mean is 72.0 ppm and standard deviation 175.7 ppm. Results are plotted on Plate 5 with values of 200 ppm and more contoured as anomalous.

On lines 485W to 860W and 35W to 185W numerous 1 and 2 line wide anomalies strike in a NW-SE direction. Between 300N and 525N a significant anomalous zone can be traced over 375 metres west of line 485W and over 150 metres east of line 185W. The two zones appear to be part of a single larger anomaly which strikes right into the Camp Zone.

A second, significant anomaly occurs on lines 635W and 710W from the baseline to 200N. Its source appears to be separate from the anomalies which constitute the zone striking at the Camp Zone.

Zinc values which are also quite high range to 4320 ppm, have a mean of 145.8 ppm and standard deviation of 258.6 ppm. Results are plotted on Plate 5 and values of 500 ppm and over are contoured as anomalous.

For the most part the Zn anomalies coincide with Pb and occur as 1 to 4 line wide anomalies over lines 35W to 185W and 485W to 860W.

Copper values which range to 385 ppm are fairly low over the area tested. The mean is 15.1 ppm, the standard deviation 21.0 and results of 55 ppm and over are contoured as anomalous on Plate 6.

Anomalies on lines 485W to 635W between 350N and 450N and on

lines 35W to 185W between 325N and 525N may be part of one large anomaly which strikes SE directly toward the Camp Zone.

Arsenic, which was only analyzed on 129 of the soil samples taken ranges to 286 ppm. Results greater than 1 ppm are plotted on Plate 6. No significant anomalous zones are defined although a weak, 2 line wide anomaly exists from 25S to 100S on lines 484W and 560W and 7 values ranging from 24 to 286 ppm plot in a row on line 635W between 475N and 650N.

#### ii) Rocks

Two rock samples, LANI 1 and 2 were collected and analyzed. The results which are plotted on Plate 3 are as follows:

	<u>ppb Au</u>	<u>ppm Ag</u>	<u>ppm Cu</u>	<u>ppm Pb</u>	<u>ppm Zn</u>
LANI 1	360.0	16.4	367	4000	4000
LANI 2	3.0	0.4	18	203	213

### GEOPHYSICS

#### i) VLF

A VLF EM survey using a Crone Radem receiver and the Annapolis MD transmitting station was started but had to be cut short when the bush was closed due to fire hazard conditions. A total of 5.25 line km were run over the NW corner of the property.

The survey results which are recorded as dip angle in degrees are plotted in profile form on Plate 7.

Insufficient data was collected to provide any meaningful interpretation.

### CONCLUSIONS

The Ni property covers massive sulphide and shear/fracture zone style sulphide mineralization. On the east side of the Little Nitinat River showings of these styles of mineralization in the Camp and Copper Zones contain significant Au, Ag, Cu, Pb and Zn values.

Soil sampling on the west side of the river has yielded a number of Au, Ag, Cu, Pb and Zn soil anomalies with values of Ag, Pb and Zn being relatively high. These anomalies appear orientated parallel to bedding and agree closely with values obtained in earlier surveys by Falconbridge Ltd.

Most of the anomalous soils for each element analyzed are situated in a broad zone stretching from 350N to 575N on 860W down to 200N to 450N on line 35W. In most cases the highest values obtained for each element are located in this region.

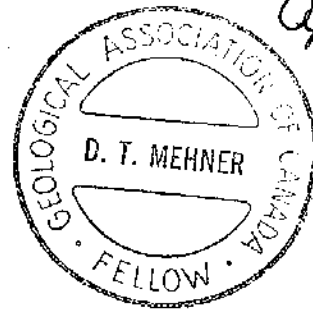
This anomalous zone which has a NW-SE trend strikes toward the Camp Zone on the east side of the river. The distance from the Camp Zone to the NW end of anomalous soil values is 1.3 km.

RECOMMENDATIONS

Detailed geological mapping following by backhoe trenching and diamond drilling should be undertaken to test the anomalous zone.

*Submitted by David Mehner*

*April 26/88*





REFERENCES

- Hudson, K. & Lear, S.: Summary Report Nitinat Claim PN 100 for Falconbridge Ltd, March 1985.
- Lear, S.: Summary Report Ni Claims PN 100 for Falconbridge Ltd., February 1986.
- Muller, J.E., 1979: Geology of Vancouver Island GSC Open File 463.
- Muller, J.E., 1981: Insular and Pacific Belts; Field Guides to Geology and Mineral Deposits, Calgary 81, GAC, MAC, CGU, 1981, Edited by R.I Thompson and D.G. Cook, pp.316-334.
- Poloni, J.R. Report on the Little Nitinat River Area Property for Summit Pass Mining Corp., November 1979.
- Poloni, J.R. Report on the Diamond Drill Program, 1979-1980, Little Nitinat River Property, for Summit Pass Mining Corp., February 24, 1980.

APPENDIX A

KAMLOOPS RESEARCH  
&  
ASSAY LABORATORY  
LTD.

B.C. CERTIFIED ASSAYERS

912 LAVAL CRESCENT, KAMLOOPS, B.C. V2C 5P5  
PHONE 372-2784 - TELEX 048-8320 - FAX 372 1112

GEOCHEMICAL LAB REPORT

DAVID MEHNER  
104 - 2000 - 31ST STREET  
VERNON, B.C.  
V1T 5G9

DATE SEPTEMBER 22, 1987

FILE NO. G 1755

KRAL NO.	IDENTIFICATION	AU	CU	PB	ZN	PAGE 1 / 4	
						AG	AS
1	0+25S B/L0+35W	3.0	6.0	63.0	133.0	3.4	1.0
2	0+50S	3.0	18.0	40.0	51.0	1.2	1.0
3	0+70S B/L0+35W	3.0	16.0	36.0	50.0	0.2	1.0
4	0+25N 5+60W	3.0	16.0	30.0	66.0	0.5	1.0
5	0+50N	3.0	35.0	71.0	156.0	1.2	1.0
6	0+75N	3.0	23.0	66.0	159.0	0.9	1.0
7	1+00N	3.0	18.0	110.0	270.0	0.8	1.0
8	1+25N	3.0	29.0	167.0	1600.0	1.4	1.0
9	1+50N	3.0	24.0	53.0	920.0	4.2	1.0
10	1+75N	3.0	24.0	31.0	432.0	6.9	1.0
11	2+00N	3.0	14.0	45.0	70.0	0.9	1.0
12	2+25N	3.0	11.0	27.0	66.0	2.0	1.0
13	2+50N	3.0	27.0	290.0	315.0	7.3	1.0
14	2+75N	3.0	44.0	640.0	436.0	13.3	1.0
15	3+00N	3.0	18.0	160.0	218.0	2.7	1.0
16	3+25N	15.0	54.0	1130.0	1020.0	5.4	1.0
17	3+50N	40.0	78.0	1356.0	2040.0	9.6	78.0
18	4+00N	3.0	70.0	255.0	310.0	20.0	70.0
19	4+25N	25.0	115.0	66.0	320.0	4.5	1.0
20	4+50N	3.0	81.0	46.0	304.0	2.6	1.0
21	4+75N	3.0	35.0	37.0	170.0	1.1	1.0
22	5+00N	3.0	24.0	37.0	53.0	1.8	1.0
23	5+50N	3.0	31.0	130.0	295.0	5.5	1.0
24	5+75N	3.0	17.0	33.0	158.0	1.8	1.0
25	6+00N	3.0	12.0	31.0	119.0	1.3	1.0
26	6+25N	3.0	6.0	24.0	70.0	0.3	1.0
27	6+50N	3.0	9.0	16.0	45.0	0.6	1.0
28	6+75N	3.0	6.0	100.0	205.0	0.5	1.0
29	7+00N	3.0	5.0	17.0	49.0	0.2	1.0
30	7+25N B/L5+60W	3.0	8.0	120.0	330.0	0.6	1.0

KAMLOOPS RESEARCH & ASSAY LABORATORY LTD.  
 GEOCHEMICAL LAB REPORT

FILE NO. G 1755

PAGE 2 / 4

KRAL NO.	IDENTIFICATION	AU	CU	PB	ZN	AG	AS
31	7+50N B/L5+60W	3.0	10.0	35.0	120.0	0.7	16.0
32	7+75N	3.0	11.0	12.0	82.0	1.1	1.0
33	8+00N	3.0	4.0	6.0	16.0	0.4	1.0
34	8+25N	3.0	10.0	10.0	42.0	0.4	1.0
35	8+50N	3.0	10.0	10.0	46.0	0.4	1.0
36	8+75N	3.0	36.0	186.0	368.0	1.6	1.0
37	9+00N	3.0	65.0	98.0	261.0	1.8	14.0
38	9+25N	3.0	15.0	11.0	63.0	0.3	1.0
39	9+50N B/L5+60W	3.0	6.0	11.0	54.0	0.7	1.0
40	0+00 B/L485W	3.0	18.0	95.0	199.0	1.0	1.0
41	0+25N	3.0	13.0	68.0	184.0	0.4	1.0
42	0+50N	3.0	4.0	15.0	104.0	0.6	1.0
43	0+75N	3.0	3.0	5.0	19.0	0.4	1.0
44	1+00N	3.0	5.0	27.0	198.0	0.2	1.0
45	1+25N	3.0	9.0	78.0	134.0	1.2	1.0
46	1+50N	3.0	6.0	82.0	420.0	0.9	1.0
47	1+75N	3.0	25.0	209.0	280.0	10.8	1.0
48	2+00N	3.0	14.0	42.0	102.0	1.2	1.0
49	2+25N	3.0	34.0	91.0	202.0	0.9	1.0
50	2+50N	3.0	19.0	127.0	82.0	4.4	1.0
51	2+75N	3.0	32.0	42.0	49.0	1.3	1.0
52	3+00N	3.0	13.0	36.0	72.0	0.6	1.0
53	3+25N	5.0	27.0	97.0	238.0	2.9	1.0
54	3+50N	3.0	37.0	67.0	399.0	2.1	1.0
55	3+75N	3.0	40.0	108.0	438.0	16.9	1.0
56	4+00N	46.0	96.0	570.0	718.0	4.1	1.0
57	4+25N	3.0	30.0	74.0	527.0	6.2	1.0
58	4+50N	3.0	32.0	128.0	1555.0	3.1	82.0
59	4+75N	50.0	27.0	166.0	440.0	3.6	1.0
60	5+00N	5.0	22.0	49.0	396.0	1.0	1.0
61	5+25N	3.0	72.0	59.0	336.0	1.9	1.0
62	6+00N	3.0	17.0	19.0	89.0	1.0	1.0
63	6+25N	3.0	9.0	62.0	276.0	1.2	1.0
64	6+50N	3.0	14.0	110.0	448.0	2.0	1.0
65	6+75N	3.0	12.0	34.0	330.0	0.5	1.0
66	7+00N	3.0	12.0	55.0	710.0	1.6	1.0
67	7+25N	3.0	11.0	76.0	310.0	0.6	1.0
68	7+75N	3.0	12.0	25.0	62.0	1.2	1.0
69	8+00N	3.0	14.0	12.0	49.0	0.3	1.0
70	8+25N B/L485W	3.0	7.0	10.0	30.0	0.7	1.0

KAMLOOPS RESEARCH & ASSAY LABORATORY LTD.  
 GEOCHEMICAL LAB REPORT

FILE NO. G 1755

PAGE 3 / 4

KRAL NO.	IDENTIFICATION	AU	CU	PB	ZN	AG	AS
71	0+25S B/L485W	3.0	26.0	96.0	215.0	0.8	24.0
72	0+50S	3.0	40.0	134.0	390.0	2.8	22.0
73	0+75S	3.0	17.0	19.0	116.0	1.6	1.0
74	1+00S	3.0	6.0	5.0	23.0	0.3	1.0
75	1+25S	3.0	21.0	19.0	110.0	1.0	1.0
76	1+50S	3.0	72.0	30.0	370.0	1.7	1.0
77	1+75S	3.0	15.0	17.0	108.0	0.4	1.0
78	2+00S	3.0	15.0	28.0	112.0	0.6	1.0
79	2+25S	3.0	21.0	86.0	258.0	1.2	1.0
80	2+50S B/L485W	3.0	24.0	42.0	89.0	1.0	1.0
81	0+00 B/L560W	3.0	17.0	41.0	294.0	0.4	1.0
82	0+25S	3.0	22.0	40.0	586.0	0.6	1.0
83	0+50S	3.0	10.0	19.0	61.0	0.4	1.0
84	0+75S	3.0	93.0	155.0	963.0	6.1	70.0
85	1+00S	3.0	33.0	33.0	180.0	1.8	28.0
86	1+25S	3.0	28.0	26.0	138.0	0.7	1.0
87	1+50S	3.0	7.0	12.0	31.0	0.1	1.0
88	1+75S	3.0	9.0	11.0	87.0	0.0	1.0
89	2+00S	3.0	24.0	55.0	350.0	1.4	1.0
90	2+25S	3.0	11.0	18.0	105.0	1.1	1.0
91	2+50S B/L560W	3.0	25.0	51.0	199.0	1.2	1.0
92	4+50N B/L635W	3.0	35.0	196.0	660.0	3.1	1.0
93	4+75N	3.0	32.0	610.0	1030.0	7.0	74.0
94	5+00N	3.0	36.0	106.0	310.0	1.8	48.0
95	5+25N	75.0	49.0	1660.0	435.0	20.0	124.0
96	5+50N	3.0	14.0	155.0	210.0	2.7	98.0
97	5+75N	3.0	26.0	295.0	810.0	14.2	1.0
98	6+00N	15.0	26.0	136.0	320.0	5.6	286.0
99	6+25N	3.0	12.0	103.0	200.0	1.9	166.0
100	6+50N	3.0	22.0	40.0	210.0	1.1	24.0
101	6+75N	3.0	5.0	12.0	40.0	0.3	1.0
102	7+00N	3.0	14.0	14.0	69.0	0.6	1.0
103	7+25N	3.0	8.0	11.0	60.0	1.0	1.0
104	7+50N	3.0	12.0	26.0	72.0	1.8	1.0
105	7+75N	3.0	16.0	20.0	66.0	0.7	1.0
106	8+00N	3.0	26.0	20.0	94.0	0.8	1.0
107	8+50N	3.0	29.0	46.0	273.0	0.6	1.0
108	8+75N	3.0	29.0	20.0	92.0	1.2	1.0
109	9+00N	3.0	14.0	13.0	88.0	2.3	1.0
110	9+25N	3.0	12.0	14.0	150.0	0.4	1.0

KAMLOOPS RESEARCH & ASSAY LABORATORY LTD.  
GEOCHEMICAL LAB REPORT

FILE NO. G 1755

PAGE 4 / 4  
AG AS

KRAL NO.	IDENTIFICATION	AU	CU	PB	ZN	AG	AS
111	9+SON B/L635W	3.0	16.0	18.0	113.0	0.8	1.0

KAMLOOPS RESEARCH  
&  
ASSAY LABORATORY  
LTD.

B. C. CERTIFIED ASSAYERS

912 LAVAL CRESCENT, KAMLOOPS, B.C. V2C 5P5  
PHONE 372-2784 - TELEX 048-8320 - FAX 372 1112

GEOCHEMICAL LAB REPORT

DAVID MEHNER  
104 - 2000 - 31ST STREET  
VERNON, B.C.  
V1T 5G9

DATE SEPTEMBER 22, 1987

FILE NO. 6 1761

KRAL NO.	IDENTIFICATION	AU	CU	PB	ZN	PAGE 1 / 1	
						AG	AS
1	0+00S RO+00W	3.0	39.0	120.0	166.0	1.1	46.0
2	0+20S	3.0	28.0	48.0	109.0	0.2	1.0
3	0+30S	3.0	37.0	50.0	136.0	0.2	1.0
4	0+40S	3.0	12.0	17.0	30.0	0.2	1.0
5	0+50S	3.0	24.0	14.0	42.0	0.4	1.0
6	0+60S RO+00W	3.0	29.0	28.0	88.0	0.7	1.0
7	0+00S RO+25W	3.0	33.0	289.0	210.0	0.4	1.0
8	0+20S	3.0	41.0	1166.0	275.0	1.5	90.0
9	0+30S	3.0	34.0	38.0	112.0	0.3	36.0
10	0+40S	25.0	16.0	21.0	61.0	0.4	1.0
11	0+50S	3.0	29.0	38.0	67.0	0.2	1.0
12	0+60S RO+25W	3.0	25.0	60.0	85.0	0.6	1.0
13	0+00S RO+50W	3.0	18.0	26.0	67.0	0.5	1.0
14	0+20S	3.0	70.0	11.0	65.0	0.0	1.0
15	0+30S	3.0	45.0	52.0	135.0	0.0	1.0
16	0+40S	3.0	25.0	58.0	65.0	0.3	1.0
17	0+50S	3.0	37.0	44.0	82.0	0.3	1.0
18	0+60S RO+50W	70.0	40.0	23.0	124.0	0.3	1.0

IN AU COLUMN 3 INDICATES <5PPB

IN AG COLUMN 0 INDICATES <.1PPM

IN AS COLUMN 1 INDICATES <2PPM

KAMLOOPS RESEARCH  
&  
ASSAY LABORATORY  
LTD.

B. C. CERTIFIED ASSAYERS

912 LAVAL CRESCENT, KAMLOOPS, B.C. V2C 5P5  
PHONE 372-2784 - TELEX 048-8320 - FAX 372 1112

GEOCHEMICAL LAB REPORT

MR. DAVID MEHNER  
104-2000-1ST STREET  
VERNON, B.C.  
V1T 5G9

DATE SEPTEMBER 9, 1987

FILE NO. G 1727

PAGE 1 / 5  
AG

KRAL NO.	IDENTIFICATION	AU	CU	PB	ZN	AG
1	25N 35W	3.0	13.0	104.0	113.0	0.4
2	50N	3.0	10.0	13.0	36.0	0.4
3	75N	3.0	9.0	15.0	43.0	0.3
4	125N	3.0	10.0	47.0	102.0	0.1
5	175N	3.0	16.0	24.0	50.0	0.3
6	200N	3.0	32.0	90.0	124.0	2.0
7	225N	3.0	43.0	488.0	970.0	1.3
8	250N	3.0	58.0	1610.0	692.0	7.7
9	275N	3.0	33.0	203.0	215.0	2.3
10	350N	3.0	103.0	309.0	531.0	2.6
11	375N	3.0	54.0	473.0	995.0	3.6
12	400N	3.0	35.0	409.0	580.0	2.3
13	425N	3.0	198.0	80.0	418.0	0.9
14	450N	3.0	17.0	42.0	32.0	0.0
15	475N	3.0	23.0	39.0	45.0	0.2
16	500N	3.0	14.0	27.0	40.0	0.2
17	525N	3.0	37.0	50.0	86.0	0.0
18	550N	3.0	19.0	10.0	28.0	0.0
19	575N	3.0	27.0	17.0	37.0	0.2
20	600N	3.0	22.0	11.0	45.0	0.1
21	625N	3.0	17.0	12.0	36.0	0.0
22	650N	3.0	16.0	11.0	73.0	0.5
23	675N	3.0	10.0	11.0	38.0	0.0
24	700N	3.0	13.0	17.0	35.0	0.0
25	750N	3.0	46.0	65.0	369.0	0.6
26	800N	3.0	11.0	8.0	37.0	0.0
27	925N	3.0	13.0	16.0	41.0	0.3
28	950N	3.0	19.0	11.0	45.0	0.0
29	975N 35W	100.0	33.0	17.0	52.0	0.4
30	B/L L110W	3.0	58.0	85.0	71.0	1.0

KAMLOOPS RESEARCH & ASSAY LABORATORY LTD.  
 GEOCHEMICAL LAB REPORT

FILE NO. G 1727

PAGE 2 / 5  
 AB

KRAL NO.	IDENTIFICATION	AL	CU	PB	ZN	AB
31	0+25N L110W	3.0	21.0	15.0	63.0	0.8
32	0+50N	3.0	28.0	38.0	65.0	1.0
33	0+75N	3.0	12.0	27.0	52.0	0.2
34	1+00N	3.0	14.0	31.0	64.0	0.1
35	1+25N	3.0	16.0	46.0	78.0	0.3
36	1+50N	3.0	14.0	44.0	119.0	0.6
37	1+75N	3.0	26.0	86.0	139.0	2.5
38	2+00N	3.0	21.0	60.0	67.0	1.2
39	2+25N	3.0	11.0	105.0	71.0	0.6
40	2+50N	3.0	32.0	103.0	118.0	0.6
41	2+75N	3.0	26.0	148.0	156.0	1.2
42	3+00N	3.0	38.0	110.0	153.0	2.3
43	3+25N	3.0	70.0	151.0	150.0	2.9
44	3+50N	3.0	35.0	84.0	137.0	1.0
45	3+75N	3.0	24.0	57.0	60.0	2.2
46	4+00N	25.0	27.0	313.0	57.0	6.0
47	4+25N	3.0	29.0	322.0	121.0	2.1
48	4+50N	15.0	325.0	75.0	45.0	3.2
49	4+75N	3.0	27.0	12.0	55.0	0.3
50	5+00N	3.0	11.0	10.0	25.0	0.0
51	5+25N	3.0	23.0	22.0	49.0	0.2
52	5+50N	3.0	16.0	14.0	28.0	0.3
53	5+75N	3.0	20.0	10.0	44.0	0.0
54	6+00N	3.0	14.0	17.0	33.0	0.1
55	6+25N L110W	3.0	11.0	17.0	37.0	0.3
56	8/LOO 185W	25.0	37.0	563.0	399.0	1.8
57	25N	3.0	21.0	67.0	76.0	0.7
58	55N	15.0	36.0	25.0	144.0	0.3
59	75N	20.0	9.0	19.0	28.0	0.0
60	100N	35.0	28.0	76.0	210.0	0.4
61	125N	10.0	34.0	71.0	107.0	1.2
62	150N	30.0	10.0	12.0	24.0	0.2
63	175N	3.0	9.0	11.0	17.0	0.0
64	200N	75.0	8.0	11.0	32.0	0.0
65	230N	3.0	7.0	48.0	35.0	0.0
66	250N	45.0	37.0	44.0	75.0	1.3
67	275N	3.0	43.0	50.0	123.0	1.1
68	300N	3.0	43.0	68.0	160.0	2.2
69	325N	5.0	54.0	729.0	330.0	3.2
70	350N 185W	3.0	26.0	58.0	62.0	1.2



KAMLOOPS RESEARCH & ASSAY LABORATORY LTD.  
GEOCHEMICAL LAB REPORT

FILE NO. G 1727

PAGE 3 / 5

KRAL NO.	IDENTIFICATION	AU	CU	PB	ZN	AG
71	375N 183W	3.0	27.0	505.0	407.0	0.5
72	575N	3.0	33.0	54.0	179.0	1.5
73	600N	3.0	28.0	32.0	65.0	0.5
74	625N	3.0	18.0	36.0	42.0	0.3
75	650N	3.0	10.0	10.0	28.0	0.0
76	680N	3.0	43.0	151.0	309.0	0.0
77	700N	3.0	52.0	207.0	525.0	1.7
78	725N	3.0	32.0	112.0	279.0	1.0
79	750N	3.0	40.0	151.0	520.0	1.7
80	775N	3.0	36.0	145.0	393.0	1.1
	800N	65.0	47.0	134.0	601.0	2.1
82	825N	3.0	26.0	75.0	184.0	1.5
83	850N	3.0	9.0	10.0	32.0	0.5
84	875N	3.0	22.0	10.0	39.0	1.3
85	900N	3.0	17.0	17.0	48.0	0.4
86	925N	3.0	18.0	14.0	45.0	0.0
87	940N	10.0	9.0	14.0	25.0	0.0
88	975N	3.0	11.0	11.0	31.0	0.0
89	1000N 1185W	15.0	16.0	12.0	35.0	0.1
90	400N 195W	3.0	38.0	81.0	170.0	1.9
91	725N 350W	3.0	24.0	18.0	44.0	0.4
92	120N 1460W	3.0	20.0	10.0	68.0	0.0
93	175N	25.0	12.0	10.0	42.0	0.2
94	200N	30.0	9.0	9.0	21.0	0.0
95	225N	15.0	10.0	5.0	20.0	0.0
96	275N	3.0	14.0	15.0	31.0	0.0
97	300N	3.0	12.0	16.0	50.0	0.0
98	325N	3.0	10.0	8.0	34.0	0.0
99	375N	5.0	9.0	16.0	41.0	0.0
100	425N	15.0	34.0	17.0	49.0	0.0
101	525N	5.0	5.0	5.0	21.0	0.0
102	625N	5.0	9.0	13.0	44.0	0.0
103	900N	3.0	6.0	3.0	12.0	0.0
104	925N	35.0	7.0	20.0	30.0	0.0
105	950N	15.0	5.0	12.0	27.0	0.0
106	975N	25.0	7.0	11.0	29.0	0.0
107	1000N	15.0	11.0	19.0	39.0	0.2
108	1025N	5.0	7.0	10.0	27.0	0.0
109	1050N	3.0	7.0	5.0	23.0	0.0
110	1100N 1460W	25.0	4.0	5.0	16.0	0.0

*in back on map*

KAMLOOPS RESEARCH & ASSAY LABORATORY LTD.  
 GEOCHEMICAL LAB REPORT

FILE NO. G 1727

PAGE 4 / 5

KRAL NO.	IDENTIFICATION	AU	CU	PB	ZN	AG
111	1125N 1460W	3.0	8.0	12.0	31.0	0.3
112	1150N	5.0	10.0	7.0	34.0	0.1
113	1200N	3.0	6.0	9.0	11.0	0.0
114	1225N	3.0	7.0	17.0	36.0	0.0
115	1250N	3.0	7.0	24.0	70.0	0.1
116	1275N 1460W	5.0	5.0	13.0	19.0	0.0
117	150N 1535W	3.0	5.0	11.0	21.0	0.0
118	175N	3.0	6.0	10.0	20.0	0.0
119	200N	3.0	8.0	19.0	29.0	0.0
120	250N	3.0	7.0	12.0	32.0	0.0
121	275N	3.0	6.0	17.0	47.0	0.0
122	300N	3.0	27.0	26.0	43.0	0.6
123	325N	3.0	5.0	23.0	36.0	0.0
124	350N	400.0	18.0	37.0	156.0	0.0
125	375N	3.0	4.0	15.0	23.0	0.0
126	400N	3.0	8.0	14.0	20.0	0.0
127	450N	3.0	5.0	13.0	25.0	0.0
128	475N	3.0	5.0	10.0	20.0	0.0
129	500N	3.0	6.0	11.0	17.0	0.0
130	600N	3.0	6.0	9.0	19.0	0.0
131	625N	3.0	5.0	13.0	54.0	0.0
132	700N	3.0	11.0	13.0	36.0	0.0
133	725N	3.0	13.0	14.0	1.0	0.0
134	750N	3.0	7.0	13.0	17.0	0.0
135	800N	3.0	5.0	10.0	23.0	0.0
136	825N	3.0	5.0	16.0	28.0	0.0
137	900N	3.0	9.0	22.0	37.0	0.0
138	975N	3.0	6.0	23.0	134.0	0.0
139	1000N	3.0	5.0	12.0	25.0	0.0
140	1025N	3.0	4.0	10.0	13.0	0.0
141	1050N	3.0	3.0	16.0	24.0	0.0
142	1125N 1535W	3.0	9.0	16.0	24.0	0.0
143	400N <del>1460W</del> 1460W	10.0	15.0	35.0	53.0	0.0
144	450N	3.0	8.0	12.0	19.0	0.0
145	550N	3.0	6.0	13.0	32.0	0.0
146	575N	3.0	5.0	12.0	23.0	0.0
147	650N	3.0	21.0	20.0	75.0	0.0
148	675N	3.0	7.0	12.0	22.0	0.0
149	700N	3.0	5.0	8.0	20.0	0.0
150	725N	3.0	7.0	1.0	35.0	0.0

KAMLOOPS RESEARCH & ASSAY LABORATORY LTD.  
 GEOCHEMICAL LAB REPORT

FILE NO. G 1727

PAGE 5 / 5

KRAL NO.	IDENTIFICATION	AU	CU	PB	ZN	AG
151	750N	3.0	8.0	13.0	22.0	0.0
152	775N	3.0	5.0	10.0	21.0	0.0
153	800N	3.0	5.0	9.0	23.0	0.0
154	825N	3.0	3.0	6.0	13.0	0.0
155	850N	40.0	4.0	10.0	22.0	0.0
156	875N <del>875N</del> J460W	5.0	3.0	7.0	14.0	0.0

IN AU COLUMN 3 INDICATES <5 PPB

ALL OTHER VALUES REPORTED IN PPM

IN AG COLUMN 0.0 INDICATES <0.1 PPM

APPENDIX B

STATEMENT OF EXPENDITURES  
Ni Property, 1987

SALARIES

Rip Herzig	7 days @ \$110/day (Aug.14-20)	\$770.00
Dan Tomelin	8 days @ \$125/day (Aug.24-28, 30-31, Sept.1)	\$1,000.00
Brian Emberley	22 days @ \$125/day (Aug.14-28, 30-31, Sept.1-3, 20, 24)	\$2,750
Lloyd Addie	20.5 days @ \$135/day (Aug.14-28, Aug.30-31, Sept.1-4)	\$2,767.50
David Mehner	5.75 days @ \$230/day (Aug.10, 26, Sept.8,13,14,25, Apr.3,24,25)	\$1,322.50

TRUCK

4x4 truck, 22 truck days @ \$40/day	\$880.00
Gas	\$237.95

EQUIPMENT RENTAL

Mag and VLF, 20 days @ \$20/day	\$400.00
---------------------------------	----------

GEOCHEM

883 soil samples analyzed for Au, Cu, Pb, Zn, Ag (sample prep = 0.63; Au - 5.40; Cu @ 1.71; Pb, Zn, Ag @ 0.81 each)	\$8,980.11
129 analyzed for As @ 3.50	\$451.50
2 rocks for Au, Cu, Pb, Zn, Ag (rock prep - \$2.50 ea)	\$24.08

FOOD & LODGING

55 man days	\$914.38
-------------	----------

MISCELLANEOUS

Shipping, telephone, flagging, ferry, etc.	\$520.00
--	----------

REPORT PREPARATION

Sepias and drafting paper	\$123.00
Copies of maps, typing, photocopying	<u>\$115.00</u>

TOTAL	\$21,256.02
-------	-------------

APPENDIX C

CERTIFICATE OF QUALIFICATIONS

I, David Mehner, of #104 - 2000 31st Street in the City of Vernon in the Province of British Columbia, do hereby certify that:

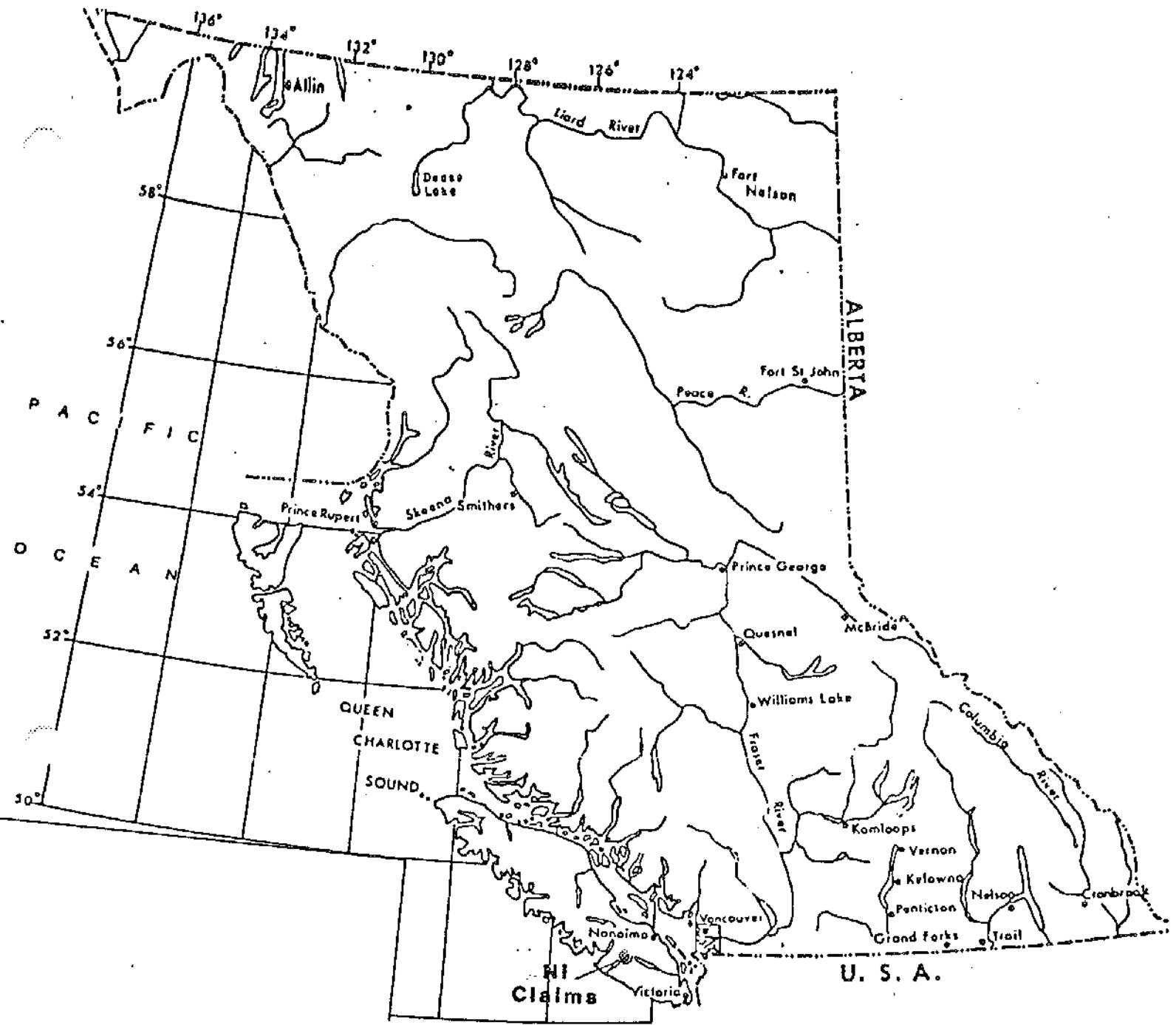
1. I am a graduate of the University of Manitoba, B.Sc.Hon. 1976, M.Sc. Geology, 1982.
2. I am a consulting geologist and have practiced my profession continuously since 1979.
3. I am a Fellow of the Geological Association of Canada.
4. During the period August 1987 to September 1987 I supervised and managed the exploration program on the Ni property on behalf of Lucky 7 Exploration Ltd.
5. I am a director of Lucky 7 Explorations Ltd.

Dated at Vernon, British Columbia this 26th day of April, AD 1988.

Respectfully submitted,



David T. Mehner, M.Sc., F.G.A.C.  
Consulting Geologist

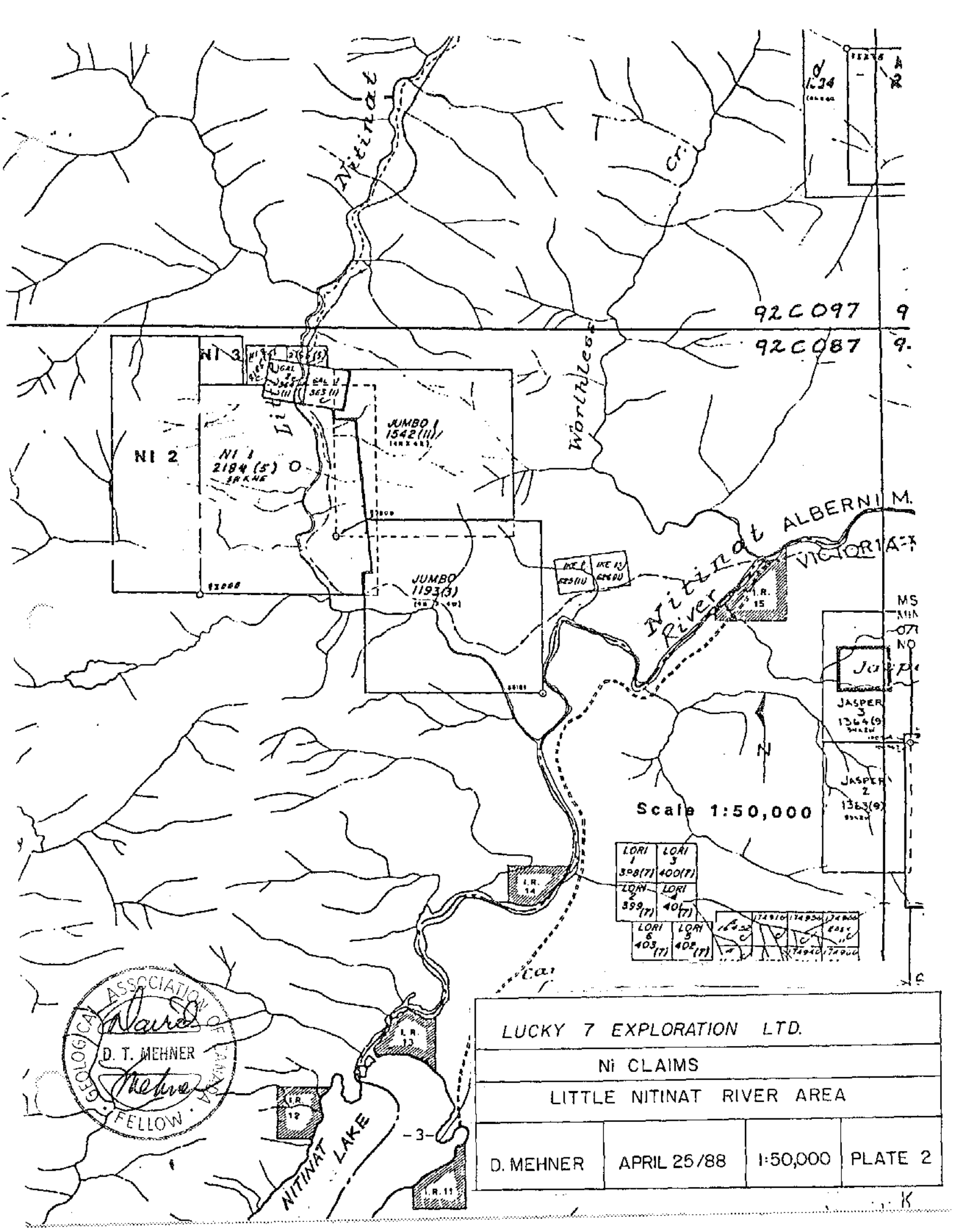


**INDEX MAP**

**BRITISH COLUMBIA**



**SCALE 1: 7 500 000**



92A09  
92A08

92C097 9  
92C087 9

NI 3  
NI 2  
NI 1  
2184 (5) O  
JUMBO 1542 (111)  
JUMBO 1193 (3)

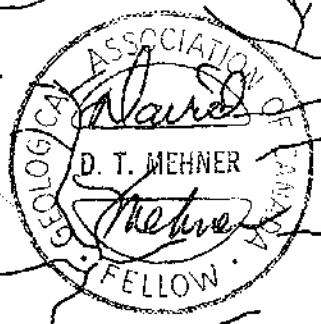
ALBERNI M.  
VICTORIA B.C.

Scale 1:50,000

JASPER 3  
1364 (9)  
JASPER 2  
1363 (9)

LORI 1  
398 (7)  
LORI 2  
399 (7)  
LORI 3  
400 (7)  
LORI 4  
401 (7)  
LORI 5  
402 (7)  
LORI 6  
403 (7)

174870 174880 174890  
174900 174910 174920

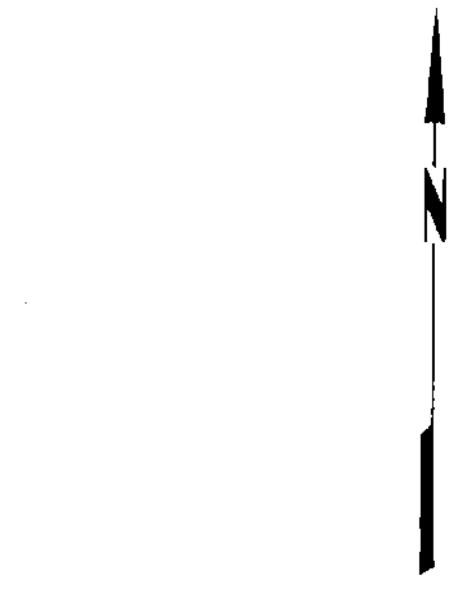
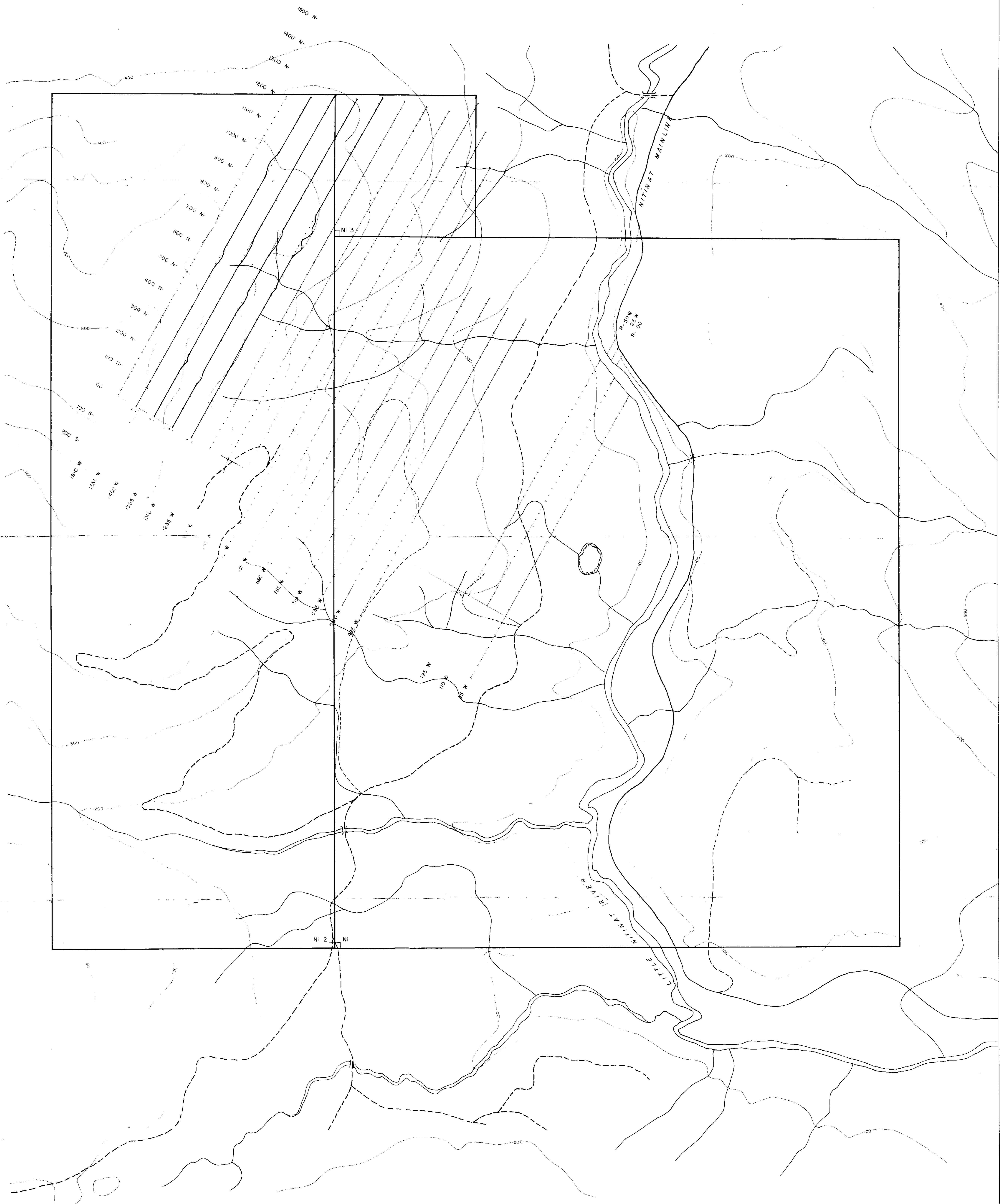


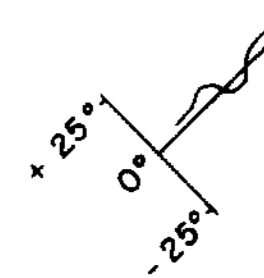
NITINAT LAKE



-3-

LUCKY 7 EXPLORATION LTD.			
NI CLAIMS			
LITTLE NITINAT RIVER AREA			
D. MEHNER	APRIL 25/88	1:50,000	PLATE 2

K

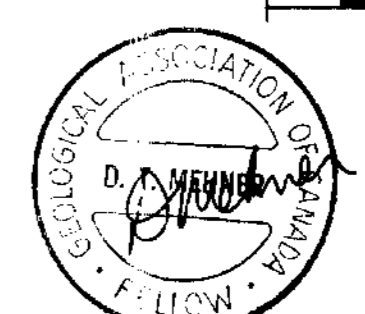
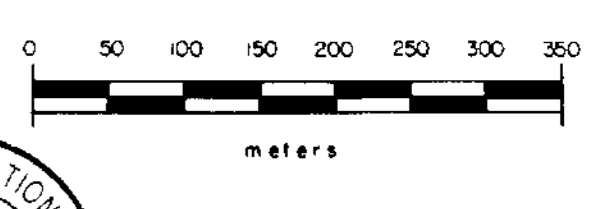



 dip angle in degrees plotted in profile  
 SURVEY CONDUCTED WITH CRONE RADEM  
 RECEIVER USING ANNAPOLIS, MD. TRANSMITTER

 main logging road  
 secondary logging road

elevation contours in metres above sea level  
**GEOLOGICAL BRANCH**  
**ASSESSMENT REPORT**

**17,406**

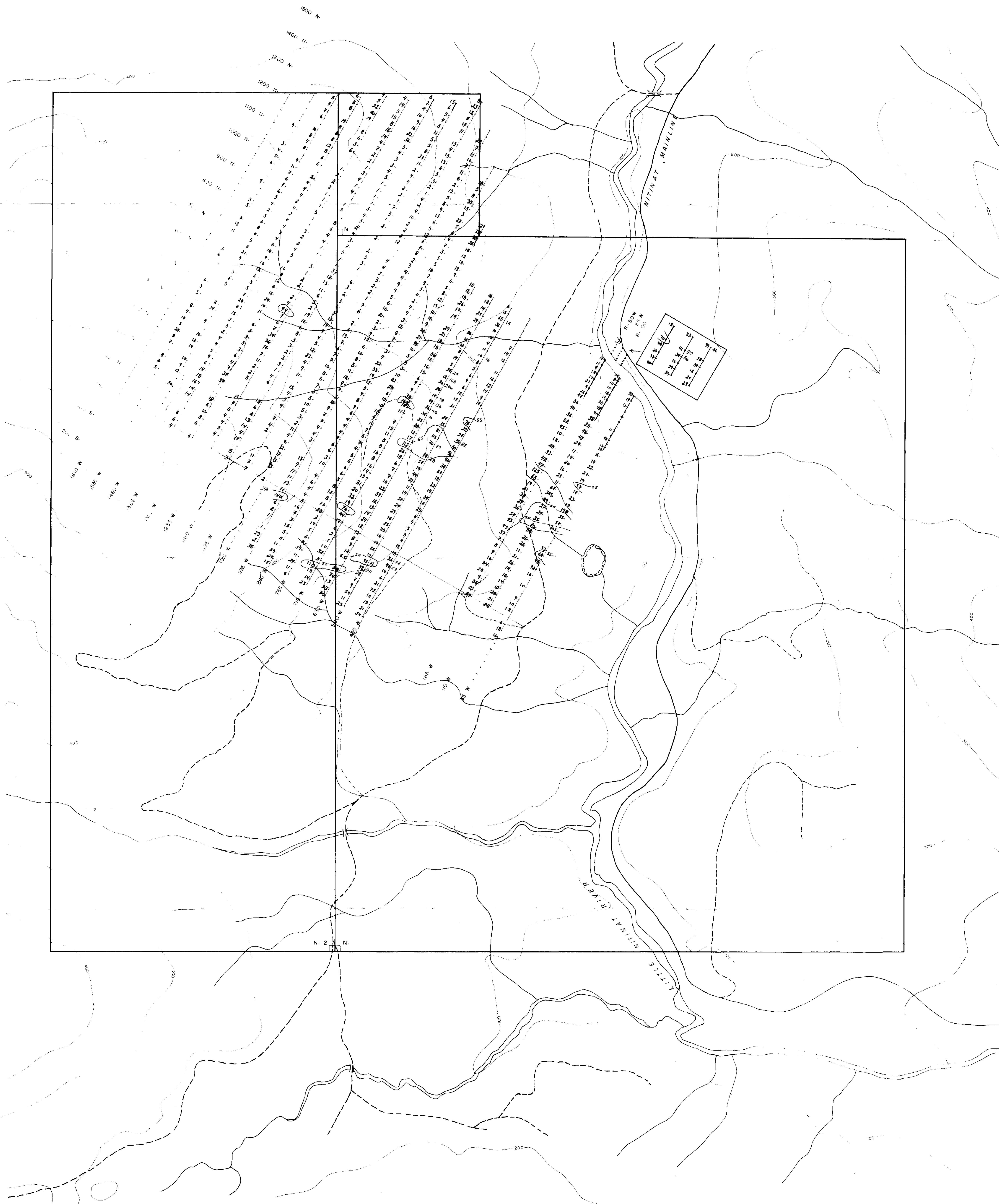


**LUCKY 7 EXPLORATION LTD.**

**NI CLAIMS**

**VLF SURVEY**





15	16	17	18	19	20
21	22	23	24	25	26
27	28	29	30	31	32
33	34	35	36	37	38
39	40	41	42	43	44
45	46	47	48	49	50

$\frac{53}{24}$   
 Cu / As  
 (ppm) / (ppm)

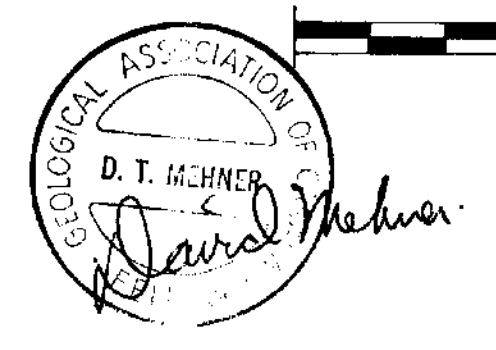
$\frac{55}{}$  > 55 ppm Cu

— main logging road  
 - - - secondary logging road  
 - - - elevation contours in metres above sea level

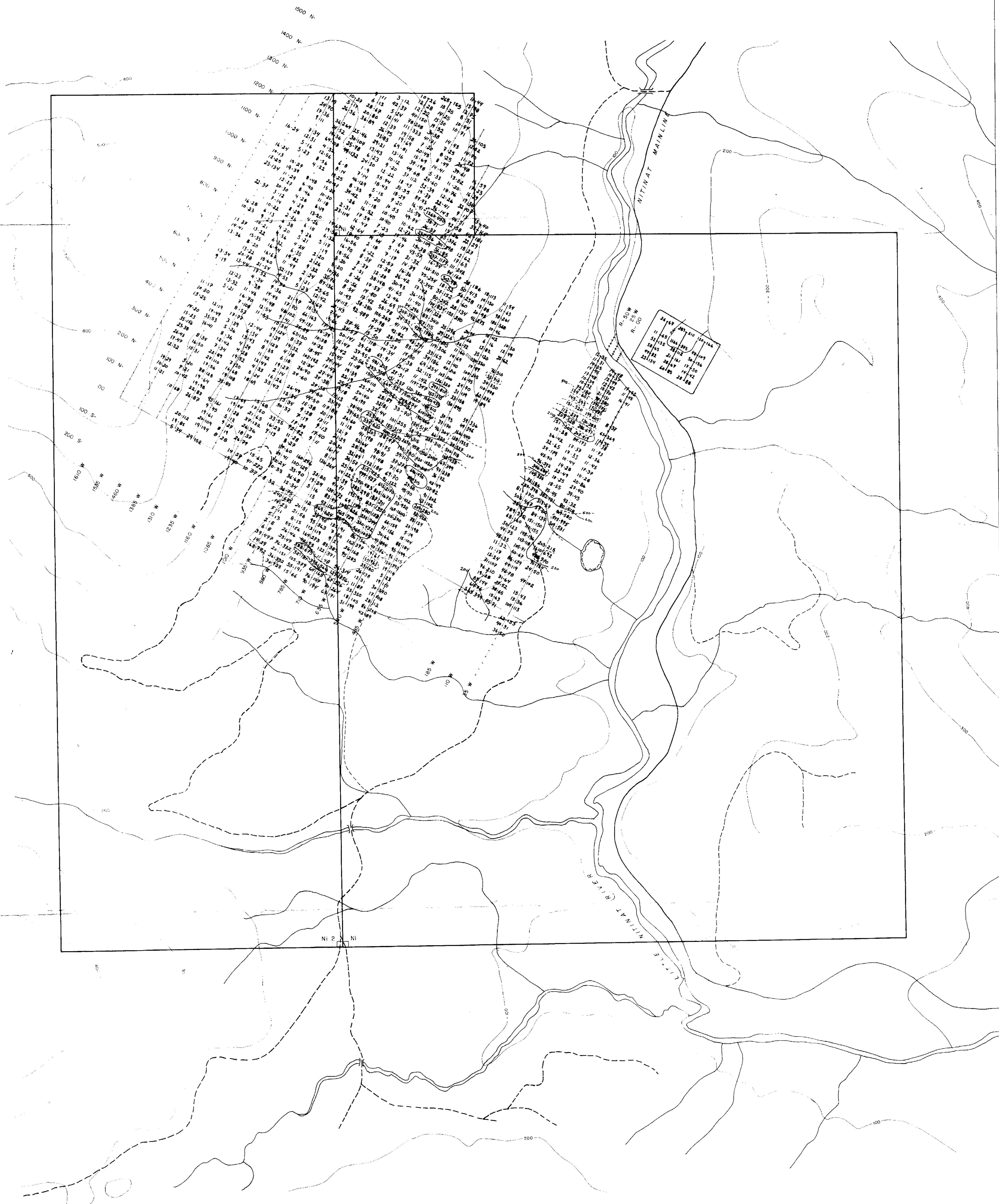
**GEOLOGICAL BRANCH  
 ASSESSMENT REPORT**

**17,406**

0 50 100 150 200 250 300 350  
 meters



**LUCKY 7 EXPLORATION LTD.**  
**NI CLAIMS**  
**As-Cu SOIL GEOCHEM SURVEY**



3/2 4/2  
Pb Zn  
(ppm) (ppm)

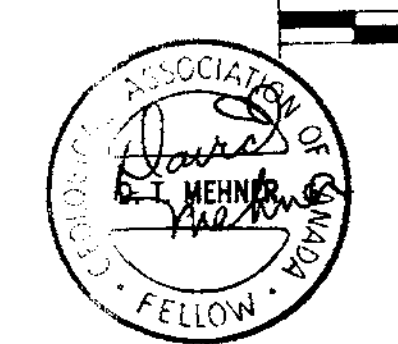
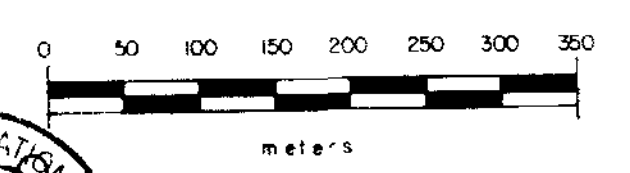
200 200 ppm Pb  
500 500 ppm Zn

— main logging road  
- - - secondary logging road

— elevation contours in metres above sea level

**GEOLOGICAL BRANCH  
ASSESSMENT REPORT**

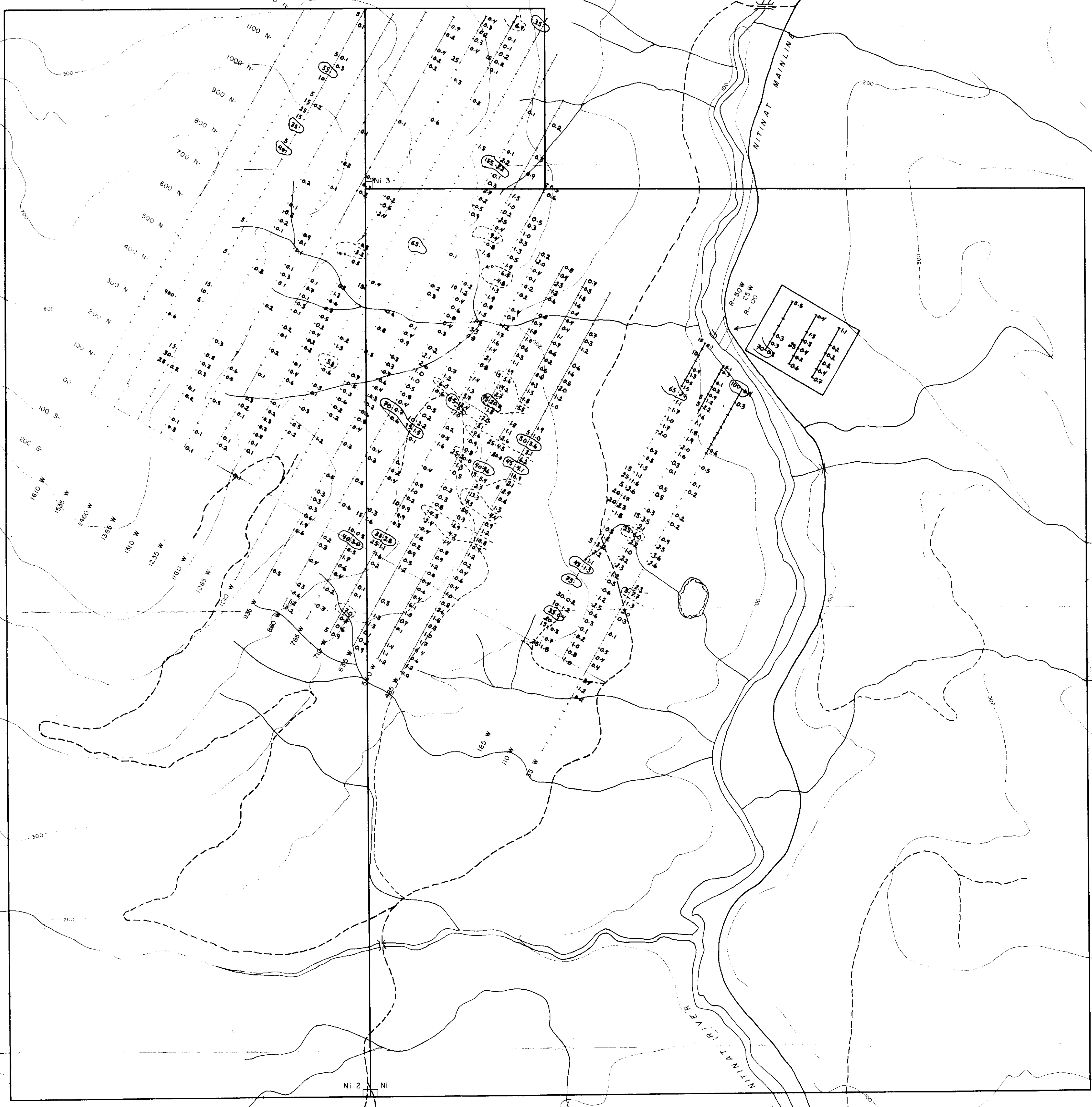
**17,406**



**LUCKY 7 EXPLORATION LTD.**

**NI CLAIMS**

**Pb-Zn SOIL GEOCHEM SURVEY**



Au, Ag  
(ppb) (ppm)

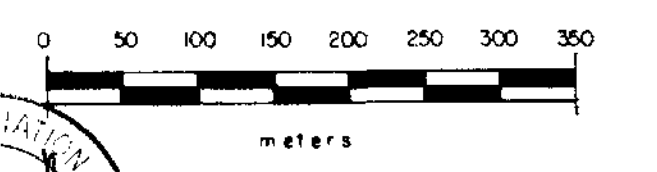
35 > 35 ppb Au

4.0 > 4.0 ppm Ag

main logging road  
secondary logging road  
elevation contours in metres above sea level

GEOLOGICAL BRANCH  
ASSESSMENT REPORT

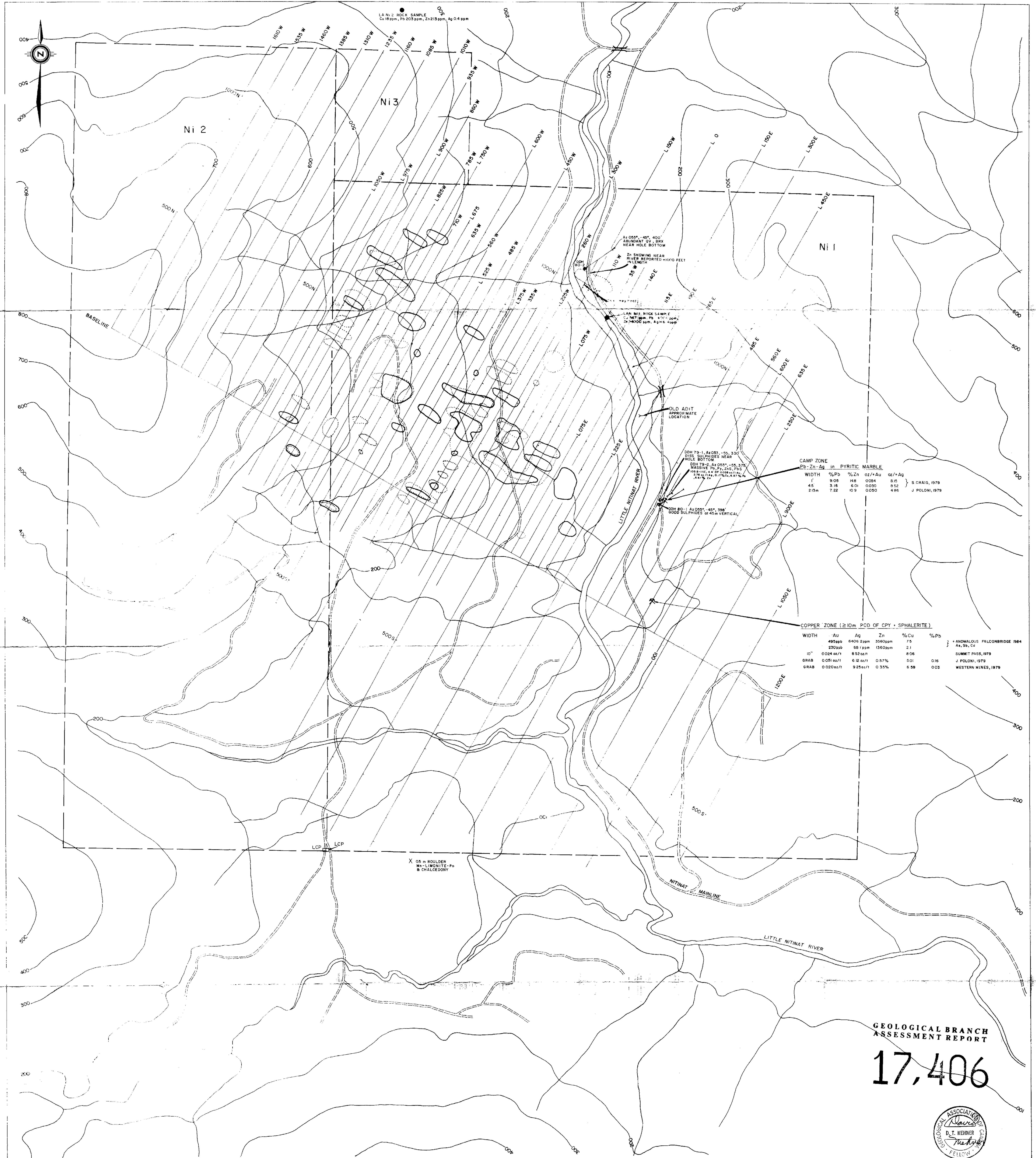
17,406



LUCKY 7 EXPLORATION LTD.

NI CLAIMS

Au-Ag SOIL GEOCHEM SURVEY



LA Ni 2 ROCK SAMPLE  
 Cu 180ppm, Pb 205 ppm, Zn 215 ppm, Ag 0.4 ppm

At 085° - 45° 40' ABUNDANT DV BRX NEAR HOLE BOTTOM  
 Zn SHOWING NEAR RIVER REPORTED 400 FEET IN LENGTH

LA Ni 2 ROCK SAMPLE  
 Cu 180ppm, Pb 205 ppm, Zn 215 ppm, Ag 0.4 ppm

DDH 79-1, At 085° - 50, 330  
 GOOD SULPHIDES NEAR HOLE BOTTOM  
 DDH 79-2, At 085° - 50, 325  
 MASSIVE Pb, Pb, Zn, Ag, Cu  
 27% Pb, 14% Zn, 0.1% Cu, 0.4% Ag, 0.4% Cu

CAMP ZONE  
 Pb-Zn-Ag in PYRITIC MARBLE

WIDTH	%Pb	%Zn	oz/Au	oz/Ag
1'	9.05	148	0.054	8.15
45'	3.18	6.01	0.030	8.52
213m	7.22	10.9	0.050	4.86

S CRAIG, 1979  
 J POLONI, 1979

COPPER ZONE (≥ 10m POD OF CPY + SPHALERITE)

WIDTH	Au	Ag	Zn	%Cu	%Pb
495ppb	6405 ppm	3560ppm	7.5		
230ppb	681 ppm	1360ppm	2.1		
10"	0.024 oz/t	8.52 oz/t	0.57%	6.06	0.16
GRAB	0.020 oz/t	6.32 oz/t	0.35%	5.01	0.03
GRAB	0.020 oz/t	9.25 oz/t	0.35%	6.58	0.03

ANOMALOUS FALCONBRIDGE 1984  
 Au, Ag, Cu  
 SUMMIT PASS, 1979  
 J POLONI, 1979  
 WESTERN MINES, 1979

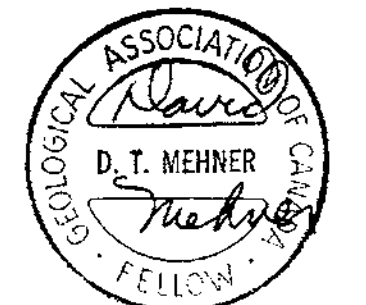
X 0.5 m BOULDER  
 M - LIMONITE, Pb  
 B - CHALCEDONY

LEGEND  
 FALCONBRIDGE GEOCHEMICAL SOIL ANOMALIES

- Pb ≥ 200 ppm
- Ag ≥ 2.5 ppm
- DRILL HOLE LOCATION

GEOLOGICAL BRANCH  
 ASSESSMENT REPORT

17,406



LUCKY 7 EXPLORATION LTD.  
 Ni CLAIMS  
 ALBERNI MINING DIVISION, B.C. NTS:92C/15  
 COMPILATION MAP

metres  
 0 100 200 300 400 500  
 SCALE 1:5,000

DATE: OCTOBER, 1987  
 DATE: C.J.SAMPSON  
 PLATE 3

Prepared by: RMR MINERAL GRAPHICS LTD.