

L 204+00 N

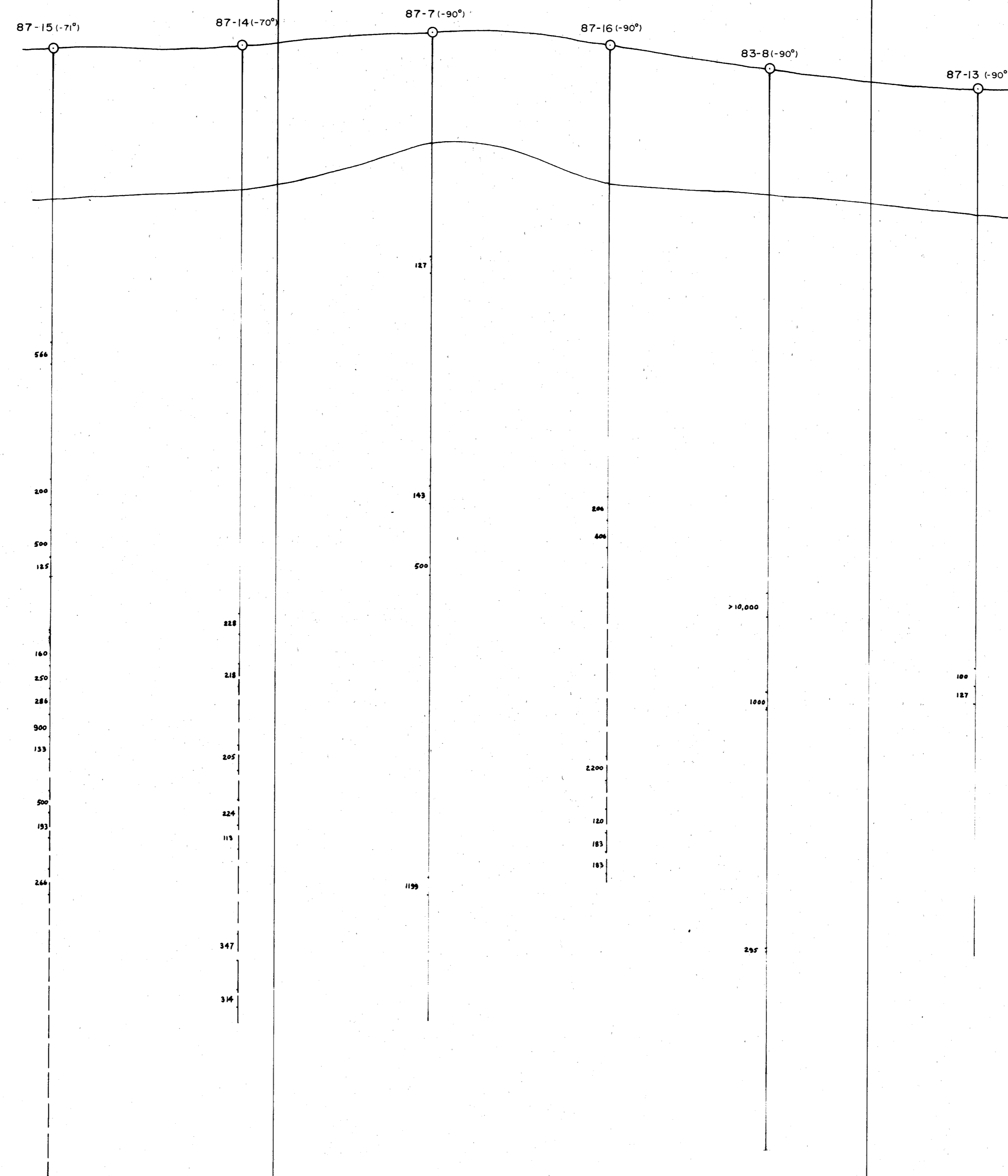
L 204+50 N

L 205+00 N

L 205+50 N

L 206+00 N

L 206+50 N



EL1014.0 m

GEOLOGICAL BRANCH
ASSESSMENT REPORT

17,523 PART 2 OF 2

Julian

SNOWFLAKE PROPERTY

DIAGRAMMATIC LONGITUDINAL SECTION
GOLD ANALYSES >100 ppb
SECTION 194+89 E

DRILL HOLES 87-7, 87-13 to 16, 83-8

SCALE 1:250

June 1987

L 204+00 N

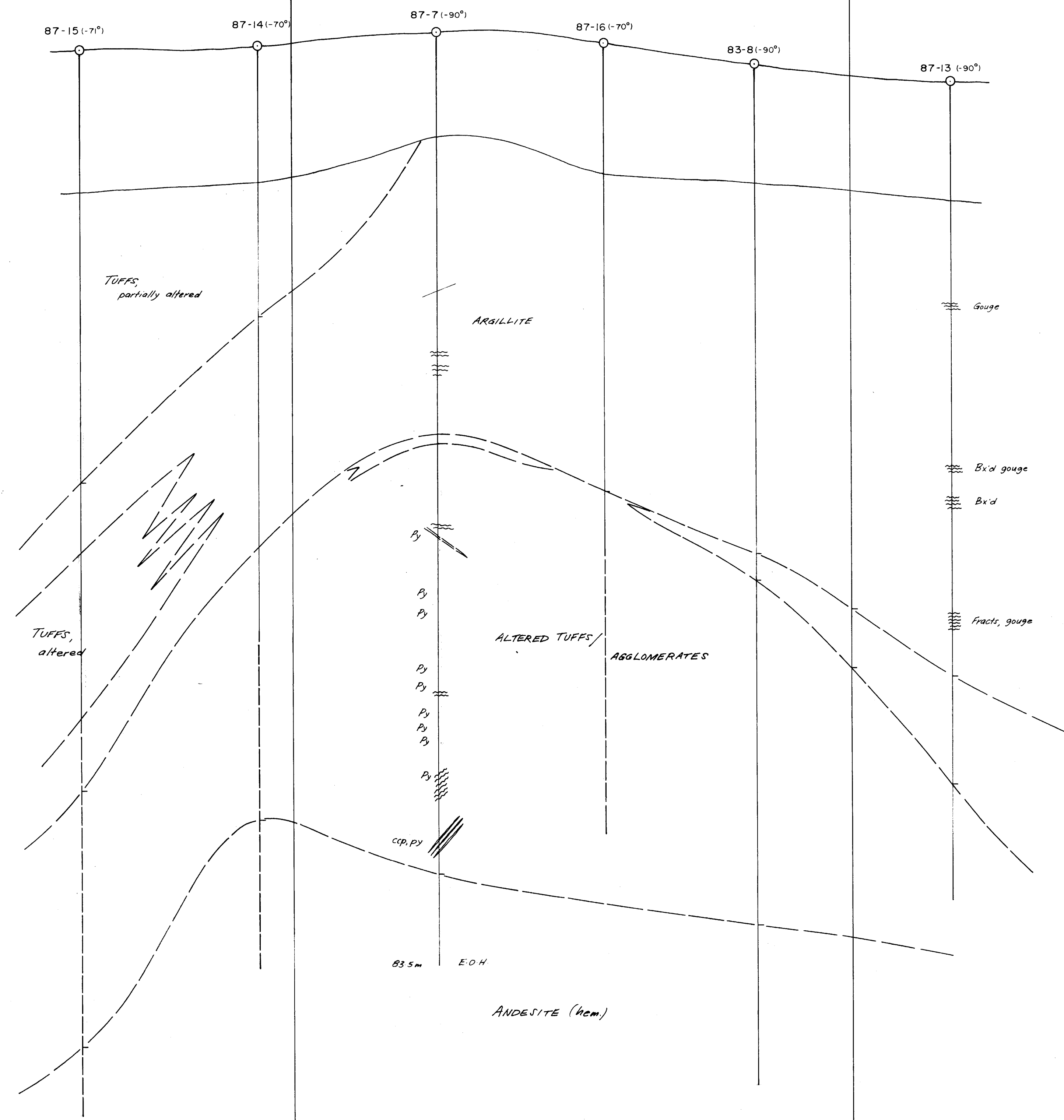
L 204+50 N

L 205+00 N

L 205+50 N

L 206+00 N

L 206+50 N



EL1014.0 m

GEOLOGICAL BRANCH
ASSESSMENT REPORT

17,523

PART 2 OF 2

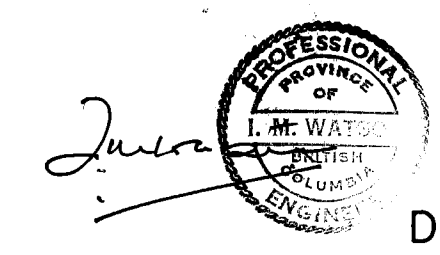
SNOWFLAKE PROPERTY

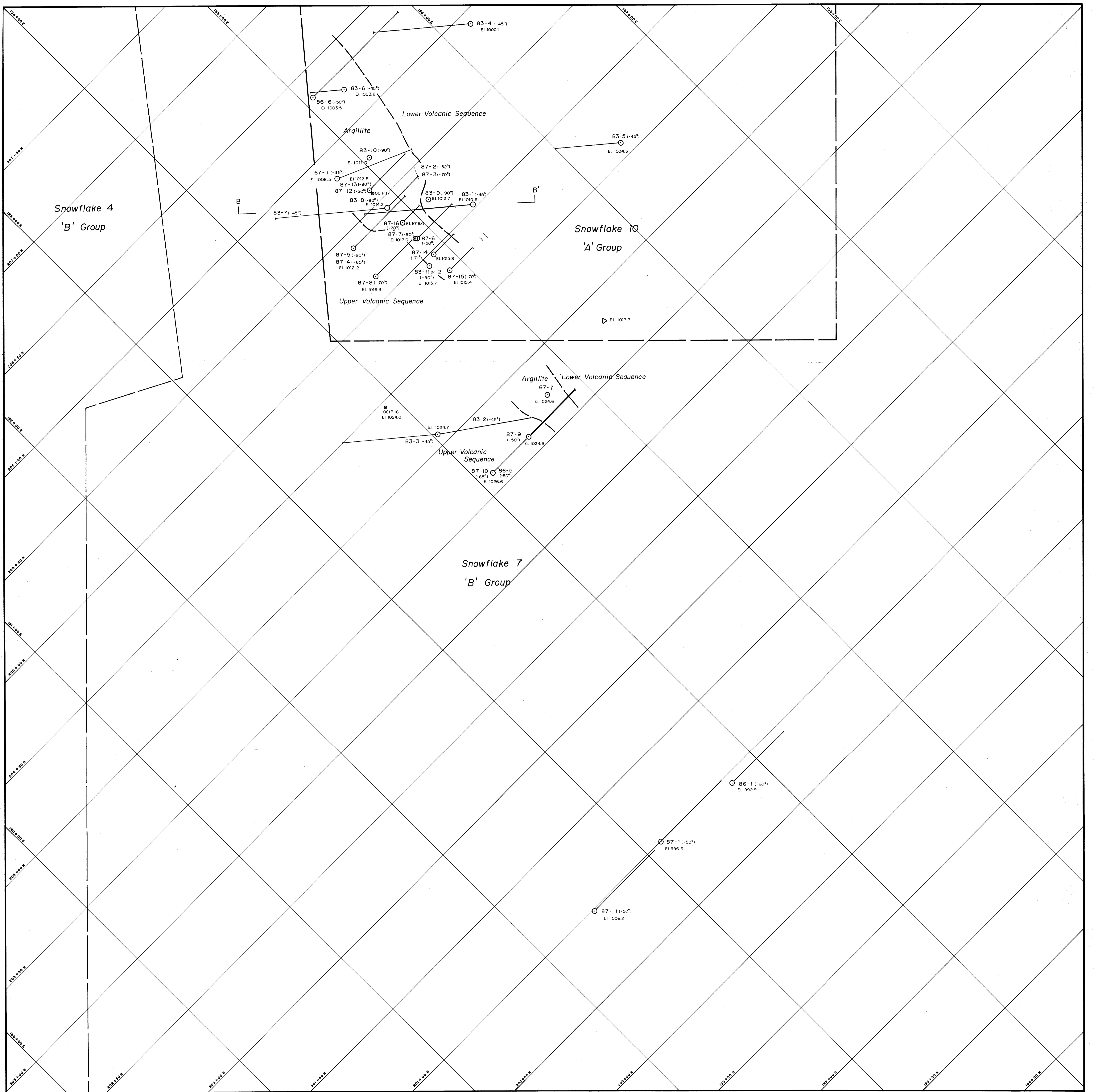
DIAGRAMMATIC LONGITUDINAL SECTION
GEOLOGY
SECTION 194+89 E

DRILL HOLES 87-7, 87-13 to 16, 83-8

SCALE 1:250

June 1987





Note: All elevations are relative. OCIP 16 elevation established by altimeter.

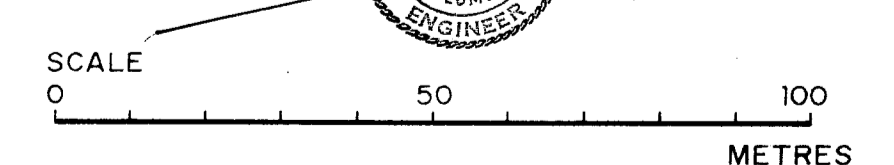
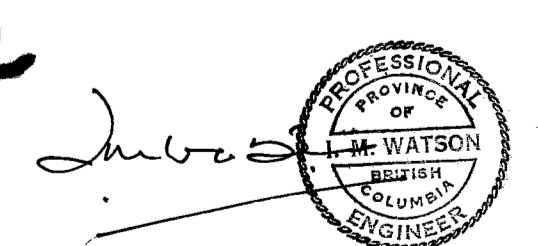
GEOLOGICAL BRANCH
ASSESSMENT REPORT

17,523

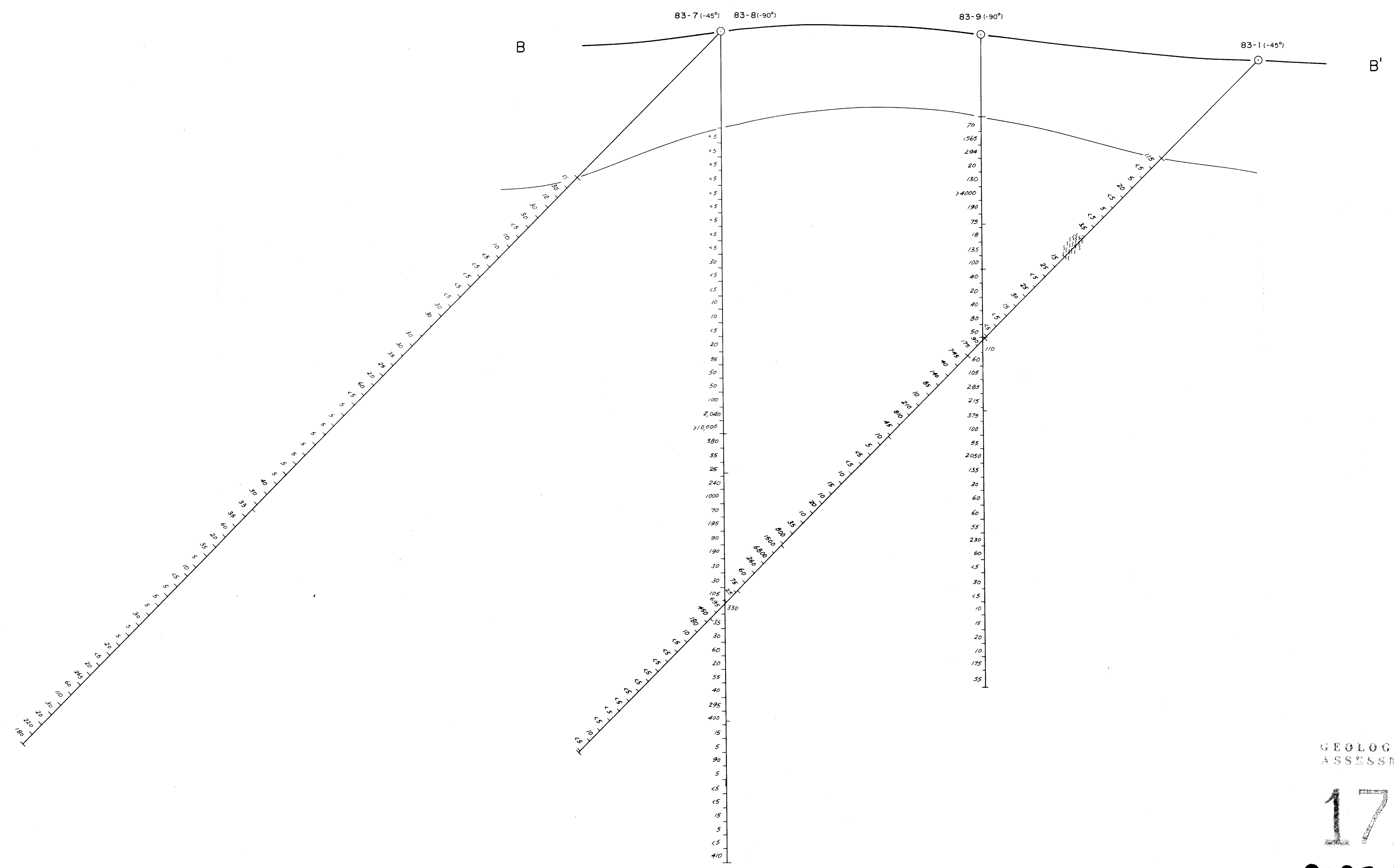
PART 2
OF 2

87-16 (70°)
El 1016.0

Diamond drill hole location,
showing hole number, dip
and elevation in metres



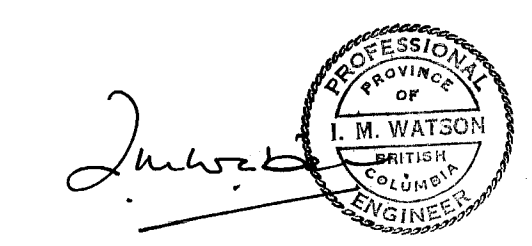
| | | | |
|-------------------------------|-----------|-------------------|---------|
| GERLE GOLD LTD. | | | |
| SNOWFLAKE PROPERTY | | NICOLA M.D., B.C. | |
| DIAMOND DRILL HOLE PLAN | | | |
| I.M. WATSON & ASSOCIATES LTD. | | | |
| SCALE | DATE | NTS No. | DWG No. |
| 1 : 1000 | June 1987 | 92 H/15E | 4 |



GEOLOGICAL BRANCH
ASSESSMENT REPORT

17,523

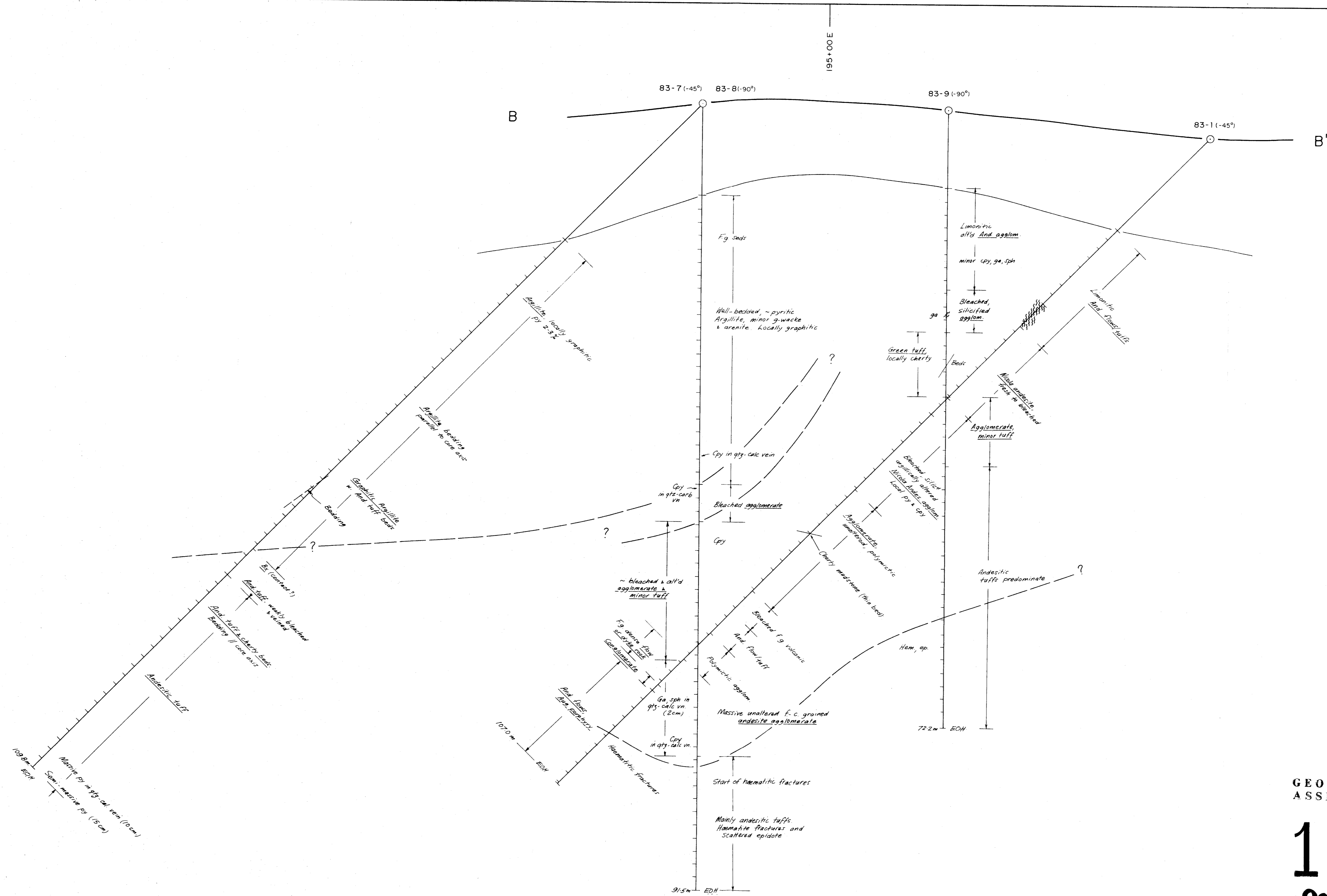
PART 2
OF 2



SNOWFLAKE PROPERTY
 DIAGRAMMATIC CROSS SECTION
 GOLD ANALYSES (ppb)
 SECTION B-B'
 DRILL HOLES 83-1,-7,-8,-9

SCALE 1:250

June 1987



GEOLOGICAL BRANCH
ASSESSMENT REPORT

17,523
PART 2 OF 2

James Watson
PROFESSIONAL ENGINEER
T. M. WATSON
COLUMBIA UNIVERSITY

SNOWFLAKE PROPERTY
DIAGRAMMATIC CROSS SECTION
GEOLOGY
SECTION B-B'
DRILL HOLES 83-1, -7, -8, -9

from KERR, DAWSON AND ASSOCIATES LTD., 1983

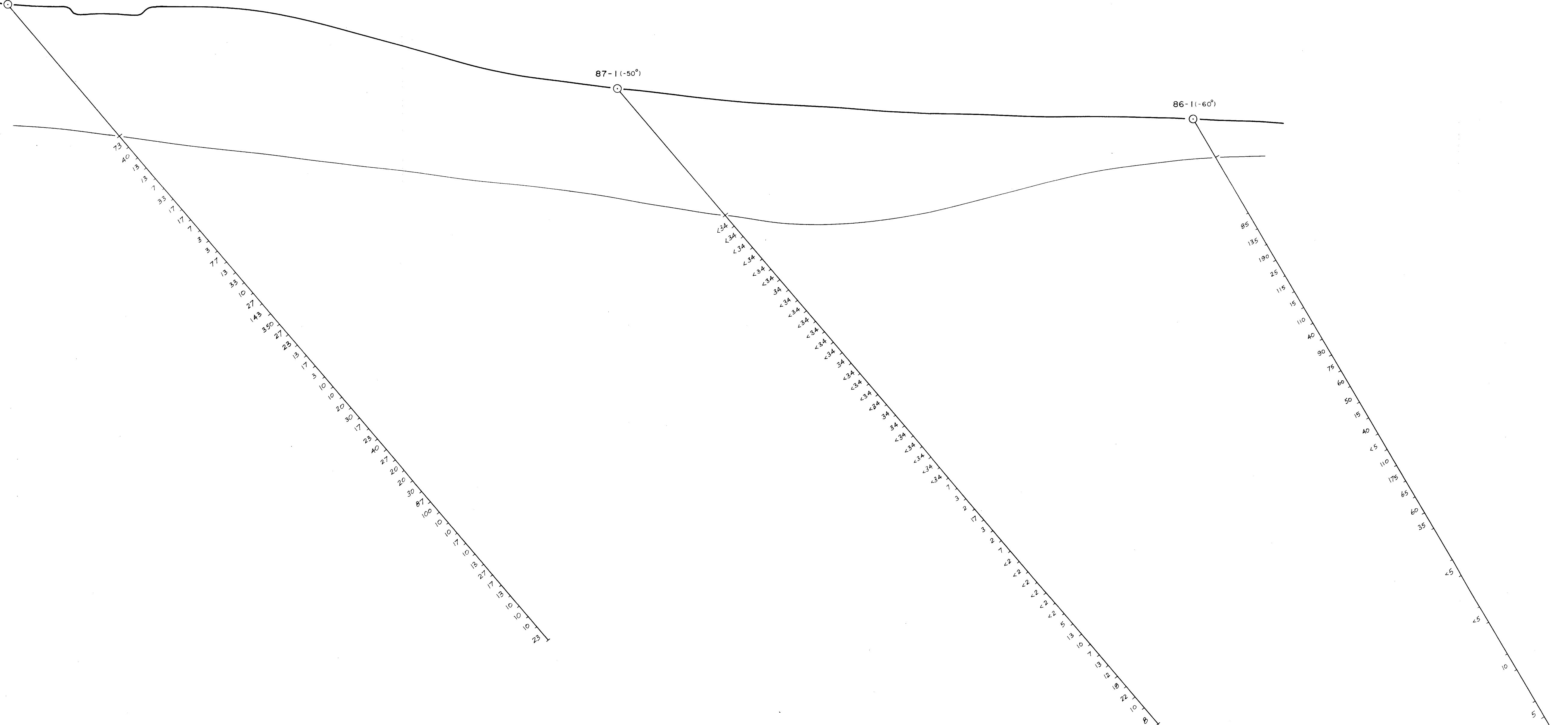
193+00 E

194+00 E

87-111-50°

87-1 (-50°)

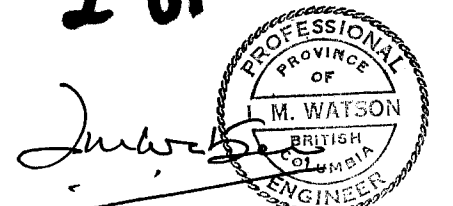
86-111-60°



GEOLOGICAL BRANCH
ASSESSMENT REPORT

17,523

PART 2 OF 2



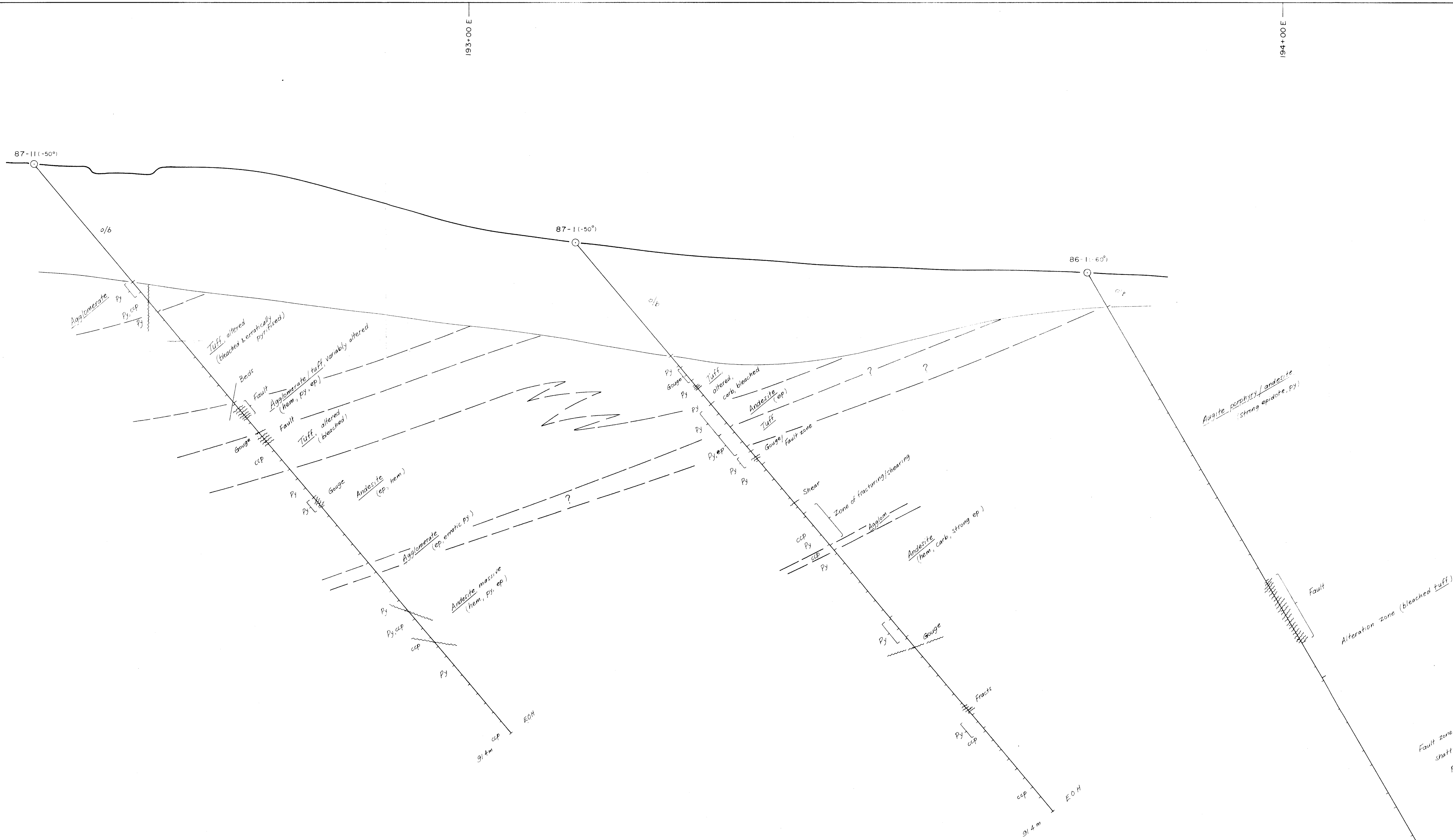
SNOWFLAKE PROPERTY

DIAGRAMMATIC CROSS SECTION
GOLD ANALYSES (ppb)
SECTION 201+00N

DRILL HOLES 86-1, 87-1, 87-11

SCALE 1:250

June 1987

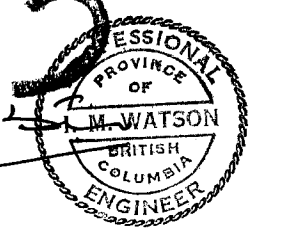


Fault zone (andesite?)
 shattered, sheared, bleached
 massive ep & carb

**GEOLOGICAL BRANCH
 ASSESSMENT REPORT**

**PART 2
 OF 2**

17,523



SNOWFLAKE PROPERTY
 DIAGRAMMATIC CROSS SECTION
 GEOLOGY
 SECTION 201+00N
 DRILL HOLES 86-1, 87-1, 87-11

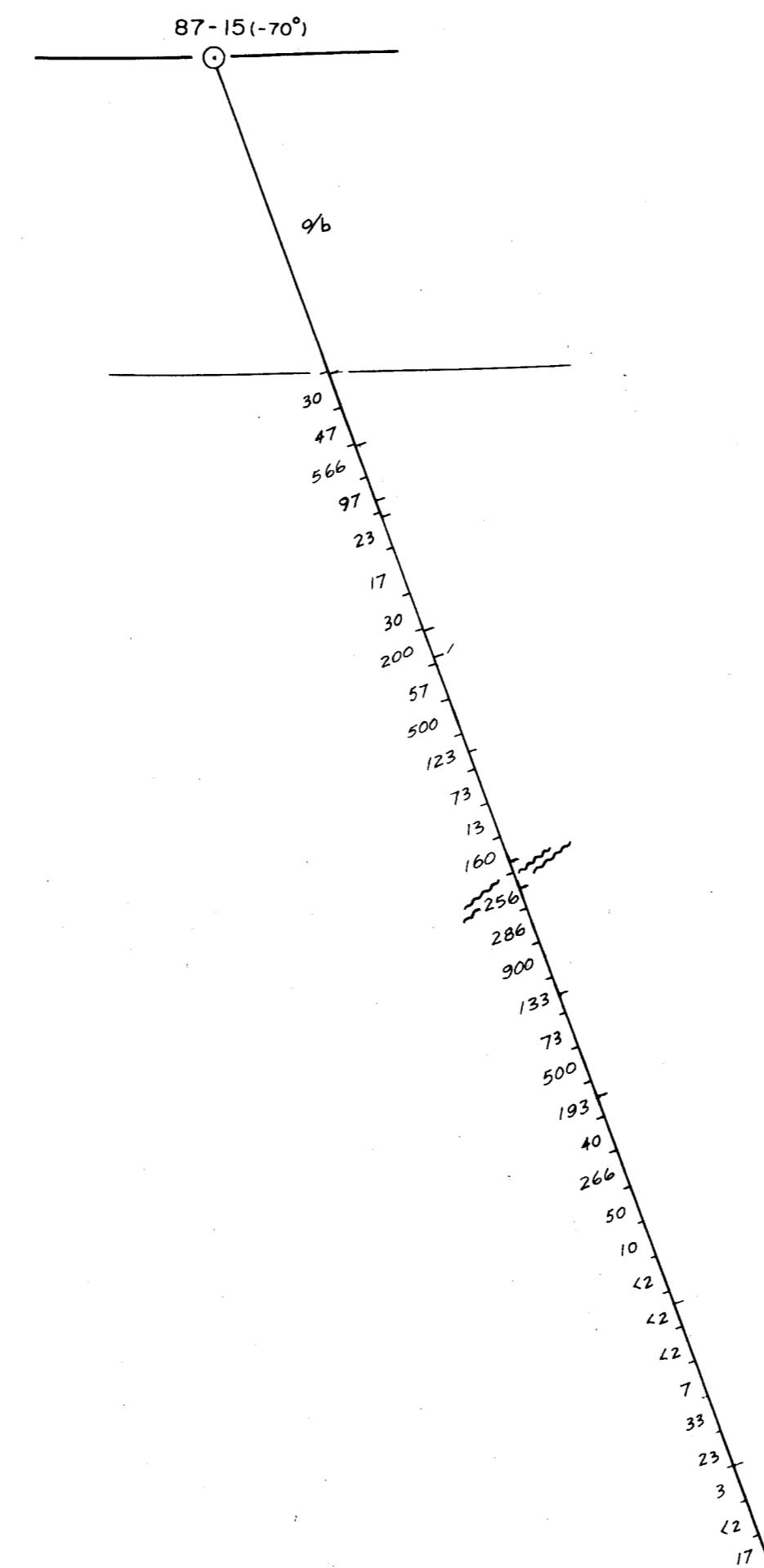
SCALE 1:250

June 1987

194+00E

195+00E

EL 1014.0 m



GEOLOGICAL BRANCH
ASSESSMENT REPORT

17,523

PART 2 OF 2

J. Watson

SNOWFLAKE PROPERTY

DIAGRAMMATIC CROSS SECTION

GOLD ANALYSES (ppb)

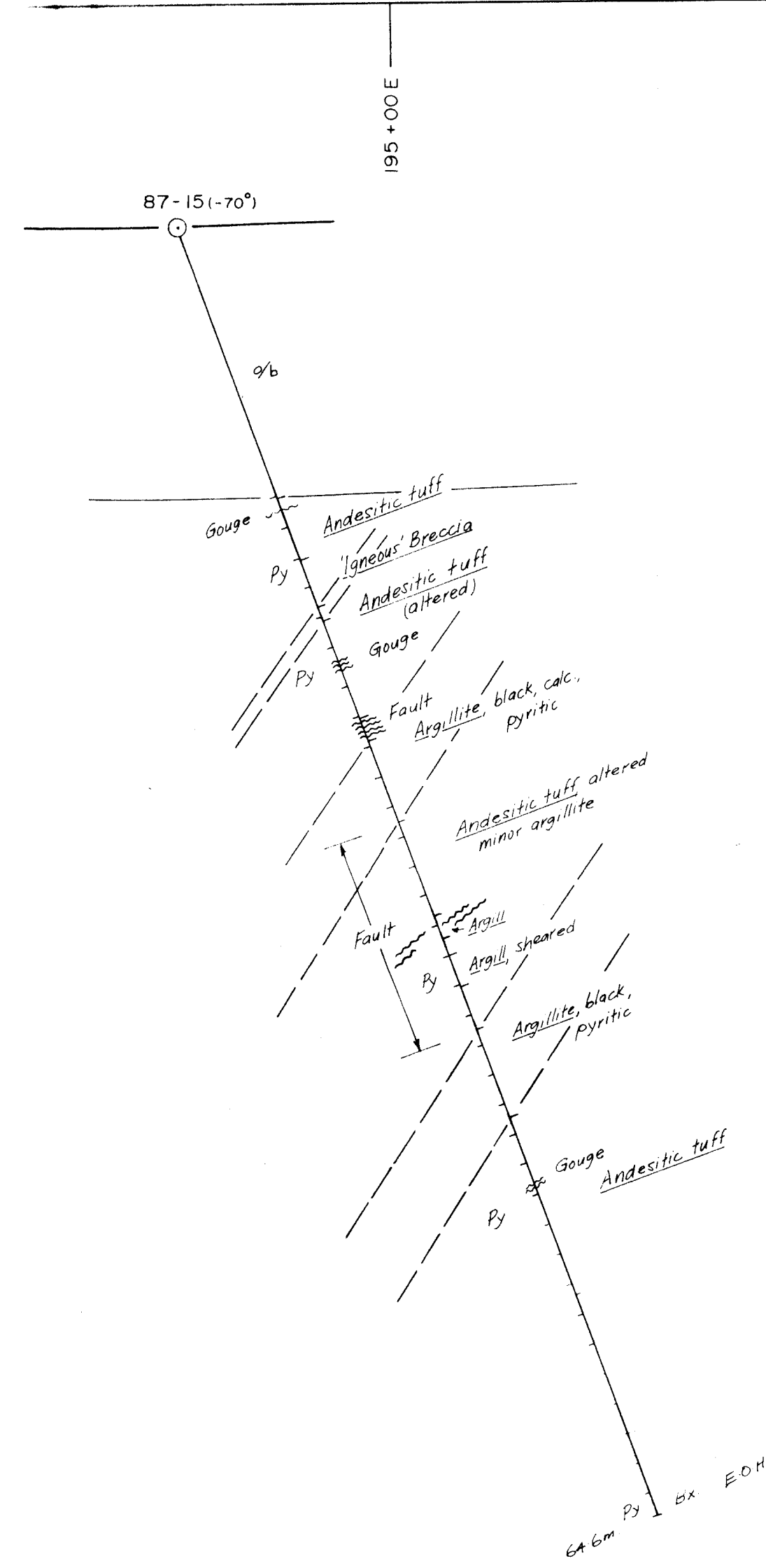
SECTION 204+82N

DRILL HOLE 87-15

SCALE 1:250

June 1987

194+00 E




EI 1014.0 m

GEOLOGICAL BRANCH
ASSESSMENT REPORT

17,523

PART 2 OF 2

J. Watson


SNOWFLAKE PROPERTY

DIAGRAMMATIC CROSS SECTION
GEOLOGY
SECTION 204+82N
DRILL HOLE 87-15

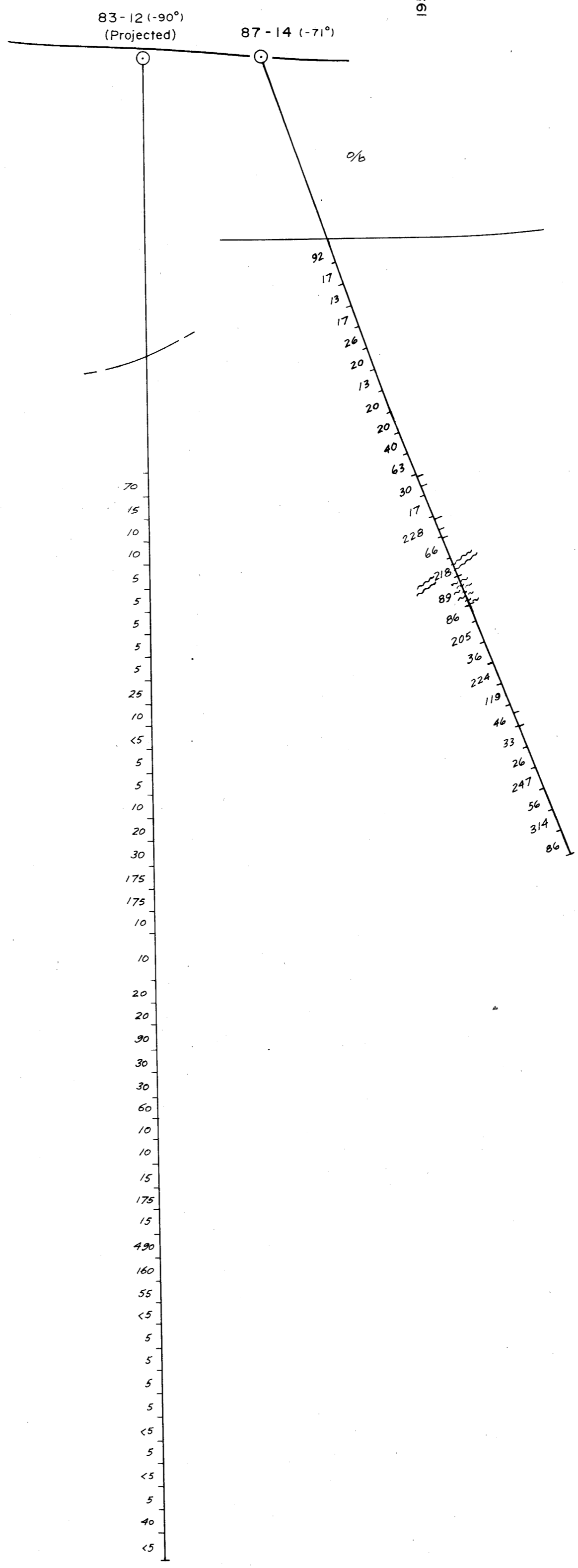
SCALE 1:250

June 1987

194+00E

195+00E

El. 1014.0 m

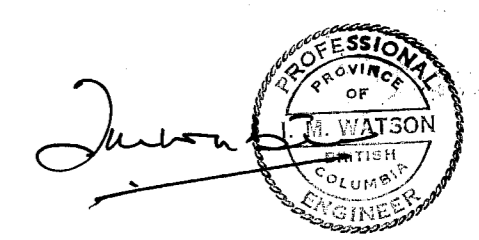


(83-12 from KERR, DAWSON & ASSOC., 1983)
(Location uncertain)

GEOLOGICAL BRANCH
ASSESSMENT REPORT

17,523

PART 2
OF 2



SNOWFLAKE PROPERTY

DIAGRAMMATIC CROSS SECTION
GOLD ANALYSES (ppb)
SECTION 204+97N
DRILL HOLES 83-12, 87-14

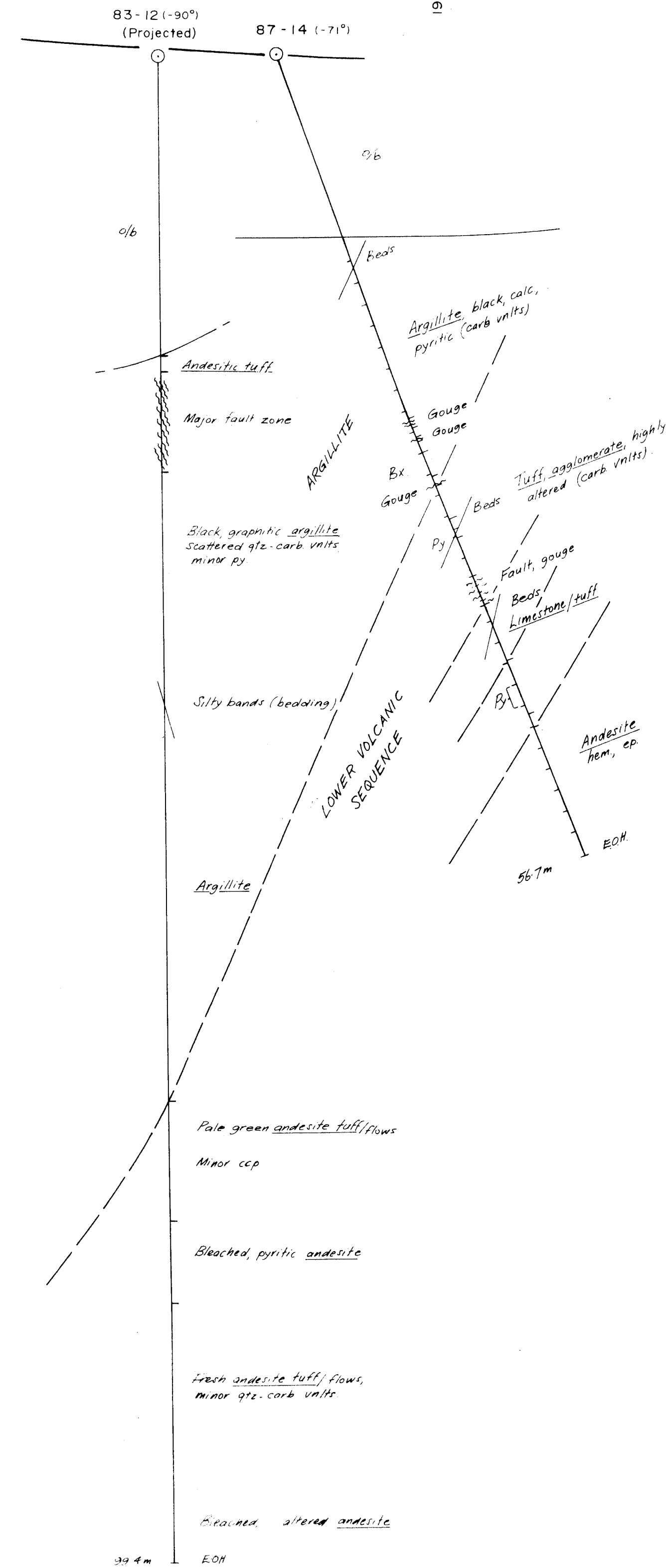
SCALE 1:250

June 1987

194+00E

195+00E

E1 1014.0 m

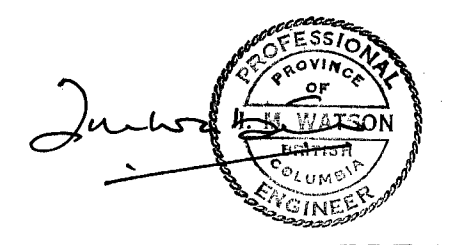


(83-12 from KERR, DANFON & ASSOCIATES, 1983)
(Location uncertain)

GEOLOGICAL BRANCH
ASSESSMENT REPORT

17,523

PART 2
OF 2



SNOWFLAKE PROPERTY
DIAGRAMMATIC CROSS SECTION
GEOLOGY
SECTION 204+97N
DRILL HOLES 83-12, 87-14

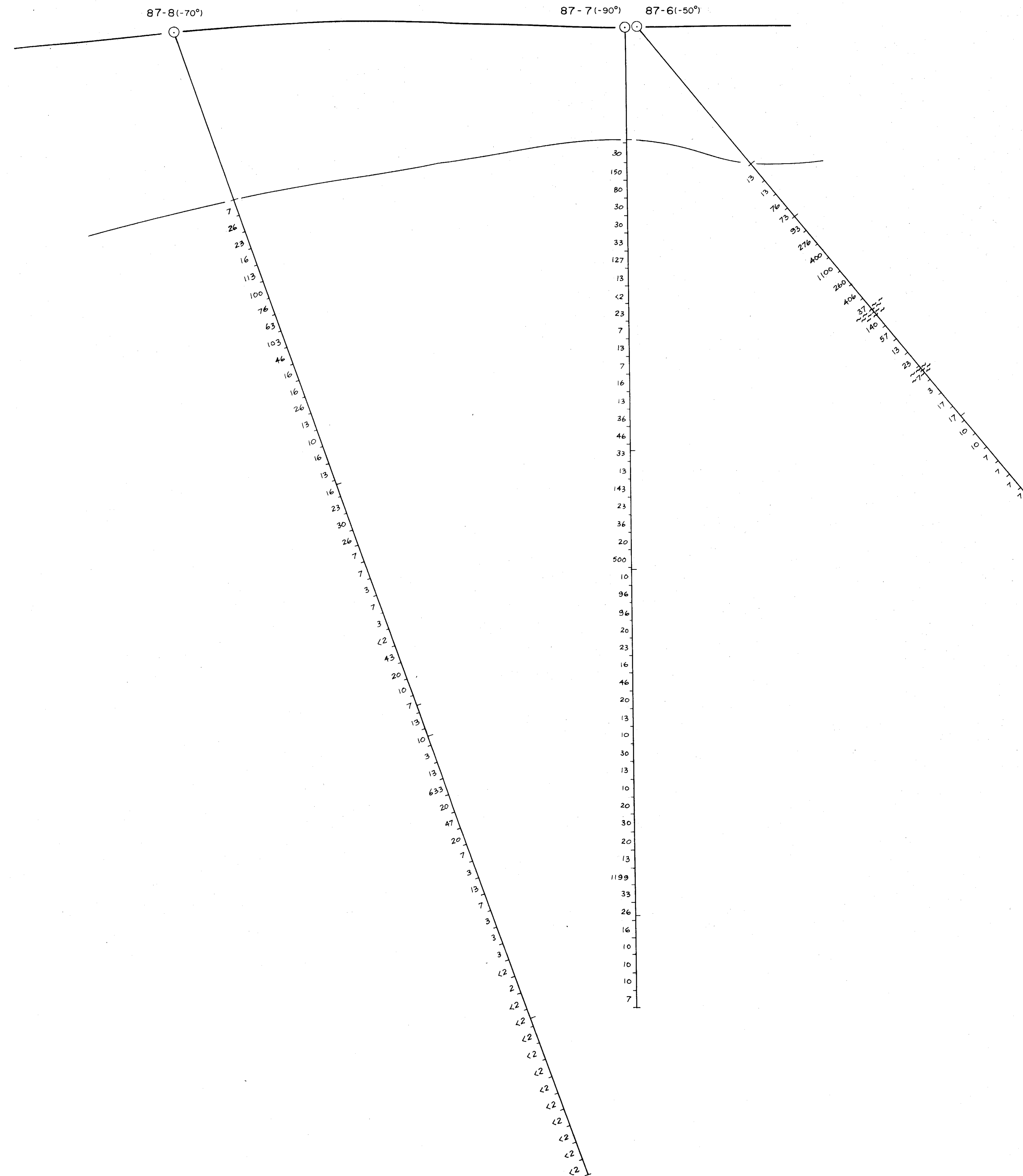
SCALE 1:250

June 1987

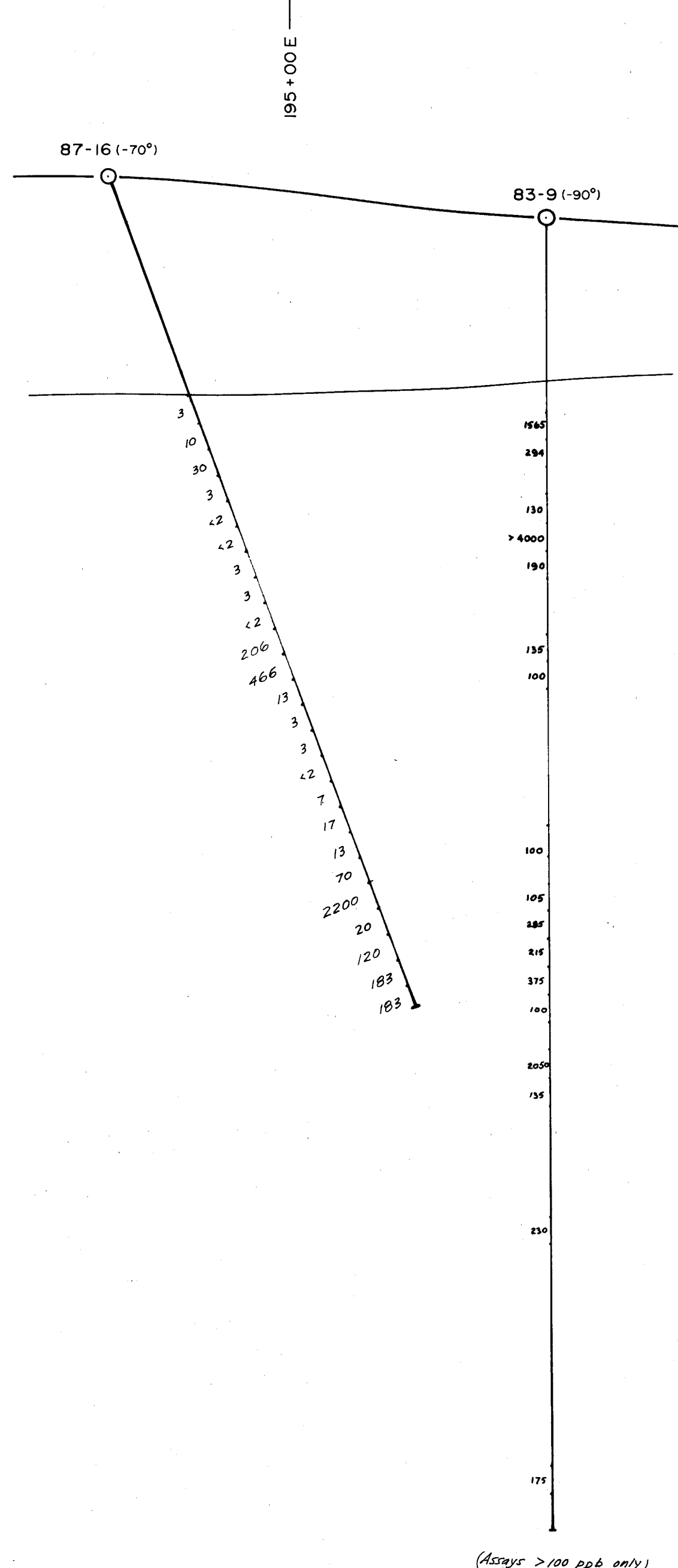
194+00 E

195+00 E

EI 1014.0 m



194+00E
ELEV. ~ 1014 M.A.S.L.



EI. 1014.0 m

GEOLOGICAL BRANCH
ASSESSMENT REPORT

17,523
PART 2 OF 2

Johnston
PROFESSIONAL
ENGINEER
M. WATSON
REGISTERED
ENGINEER

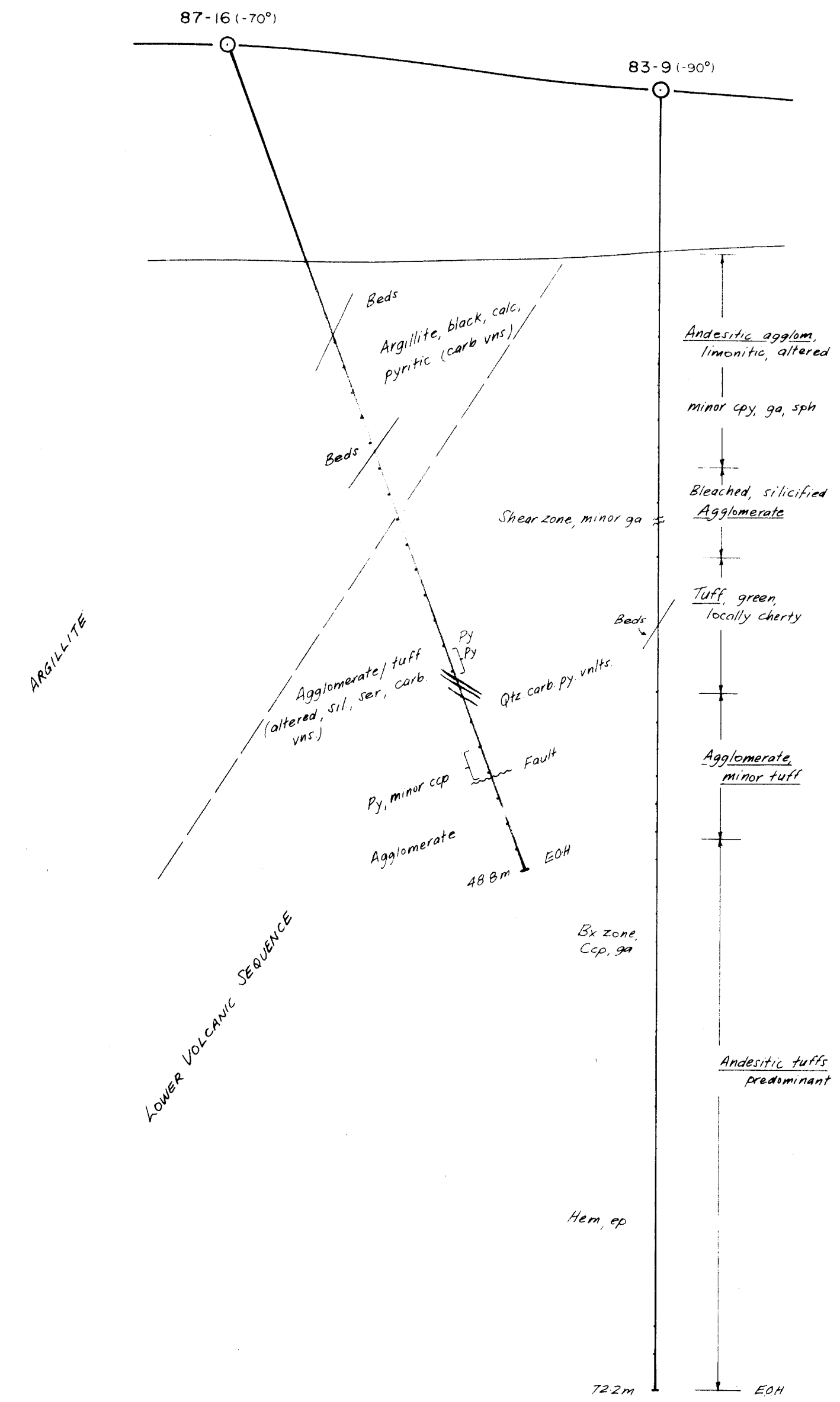
SNOWFLAKE PROPERTY
DIAGRAMMATIC CROSS SECTION
GOLD ANALYSES (ppb)
SECTION 205+28N
DRILL HOLES 83-9, 87-16

ELEV. ~ 1014 M.A.S.L.

194+00 E

195+00 E

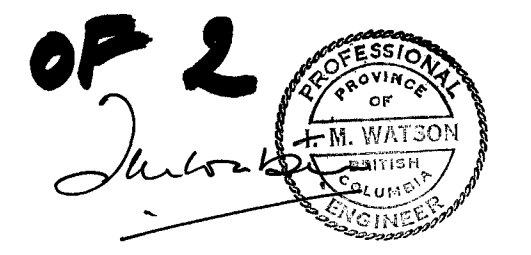
EI 1014.0 m



GEOLOGICAL BRANCH
ASSESSMENT REPORT

17,523

PART 2 OF 2



SNOWFLAKE PROPERTY
 DIAGRAMMATIC CROSS SECTION
 GEOLOGY
 SECTION 205+28N
 DRILL HOLES 83-9, 87-16

SCALE 1:250

June 1987

