

KNOX, KAUFMAN, INC.

MINERAL EXPLORATION MANAGEMENT
GEOLOGICAL CONSULTING

SPOKANE, WASHINGTON

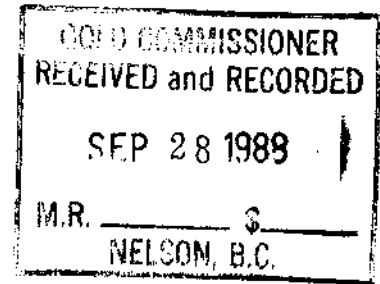
P. O. BOX 14336, ZIP 99214
TELEPHONE (509) 924-0983

September 27, 1988

ASSESSMENT REPORT FOR THE STAR CLAIM GROUP, NELSON M.D.

TABLE OF CONTENTS

Page 1 - 2	Title Page and Summary
2A	Star Claims Notice to Group
3	Location Map
4	Introduction
5	Drilling Report
6	Statement of Qualifications re. M. A. Kaufman
7	Statement of Qualifications re. Alexander S. Fraser
8 - 10	Itemized Cost Statement



APPENDIX

1 - 5	Drill log of Hole S-24
6 - 8	Assays for Hole S-24
	Location Map of Hole S-24

LOG NO: 1006	RD.
ACTION:	
FILE NO:	

FILMED

**GEOLOGICAL BRANCH
ASSESSMENT REPORT**

17,806



Province of
British Columbia

Ministry of
Energy, Mines and
Petroleum Resources

ASSESSMENT REPORT
TITLE PAGE AND SUMMARY

TYPE OF REPORT/SURVEY(S)	TOTAL COST
Drilling	\$6,943

AUTHOR(S) . Alexander, S. Fraser SIGNATURE(S)
 . M. A. Kaufman *M. A. Kaufman*

DATE STATEMENT OF EXPLORATION AND DEVELOPMENT FILED .September YEAR OF WORK 1988.

PROPERTY NAME(S) . . . Star Claim group
 Claims ST-3, ST-6

COMMODITIES PRESENT Gold, Silver, Copper

B.C. MINERAL INVENTORY NUMBER(S), IF KNOWN . 82F/SW #83(Star)

MINING DIVISION . . Nelson NTS 82 F/6

LATITUDE 49° 27' LONGITUDE 117° 21' 30"

NAMES and NUMBERS of all mineral tenures in good standing (when work was done) that form the property [Examples: TAX 1-4, FIRE 2 (12 units); PHOENIX (Lot 1706); Mineral Lease M 123; Mining or Certified Mining Lease ML 12 (claims involved)]:

See attached Notice to Group Sheet

OWNER(S)

(1) Ryan Exploration Co., Ltd. (2)

MAILING ADDRESS

c/o Knox, Kaufman, Inc.
 P. O. Box 14336
 Spokane, WA 99214 U.S.A.

OPERATOR(S) (that is, Company paying for the work)

(1) Ryan Exploration Co., Ltd. (2)

MAILING ADDRESS

as above

SUMMARY GEOLOGY (lithology, age, structure, alteration, mineralization, size, and attitude):

Anomalous AU-Ag-CU mineralization occurs in NW striking steeply dipping, silicified volcanic and volcanoclastic formations of the Jurassic Rossland Group. There appears to be both stratigraphic and structural controls to the metal occurrence, and there may be an intrusive relationship as well.

REFERENCES TO PREVIOUS WORK . . None

TYPE / WORK IN THL / REPORT	EXTENT OF WORK (IN METRIC UNITS)	ON WHICH CLAIMS	COST APPORTIONED
GEOLOGICAL (scale, area)			
Ground
Photo
GEOPHYSICAL (line-kilometres)			
Ground			
Magnetic
Electromagnetic
Induced Polarization
Radiometric
Seismic
Other
Airborne			
GEOCHEMICAL (number of samples analysed for)			
Soil
Silt
Rock
Other
DRILLING (total metres; number of holes, size)			
Core			
Non-core	150 metres, one rotary-reverse circulation	BEE Crown Grant (Lot 14630)	\$6,943
RELATED TECHNICAL hole, 3-3/4" diameter.			
Sampling/assaying
Petrographic
Mineralogic
Metallurgic
PROSPECTING (scale, area)			
PREPARATORY/PHYSICAL			
Legal surveys (scale, area)			
Topographic (scale, area)			
Photogrammetric (scale, area)			
Line/grid (kilometres)			
Road, local access (kilometres)			
Trench (metres)			
Underground (metres)			
TOTAL COST			\$6,943

FOR MINISTRY USE ONLY	NAME OF PAC ACCOUNT	DEBIT	CREDIT	REMARKS:
Value work done (from report)	
Value of work approved	
Value claimed (from statement)	
Value credited to PAC account	
Value debited to PAC account	
Accepted	Date	Rept. No.	Information Class



2A)

Province of British Columbia
Ministry of Energy, Mines and Petroleum Resources
MINERAL RESOURCES BRANCH-TITLES DIVISION

GOLD COMMISSIONER
RECEIVED and RECORDED
JUN 1 1989
M.R. 6895957 \$ 10.00
NELSON, B.C.

MINERAL ACT
FORM 1

NOTICE TO GROUP

Mining Division NELSON Location SANDY AND EAGLE CREEKS AREA

Name of group STAR - SUPPLEMENTARY Map No. 82 F/6W

We, the undersigned owners* of the following adjoining claims, desire to group them according to the provisions of the Mineral Act:-

NAME OF CLAIM	No. of Units	Record No.	Month of Record	SIGNATURE OF OWNER*	Free Miner Certificate No.
CHAMPION CG.	1	24648 ✓			
VIKING FRAC. CG.	1	4649 ✓			
GOLD LEAF FRAC.	1	12458 ✓			
GOLD LEAF #2	1	12457 ✓			
TORONTO	1	4646 ✓			
ALHAMBRA FRAC.	1	4651 ✓			
IMPERIAL	1	3686 ✓			
EUREKA	1	5552 ✓			
BELLEROPHON	1	3680 ✓			
FLORENCE G.	1	3676 ✓			
STAR	1	3687 ✓			
GERALD F. FRAC.	1	3683 ✓			
ELKHORN CG.	1	9175 ✓			
BOB	1	14632 ✓			
ALMAN	1	9174 ✓			
DOT	1	14631 ✓			
MAYFLOWER	1	3684 ✓			
ELK	1	3677 ✓			
SILVERSTONE CG.	1	10640 ✓			
BEE	1	14630 ✓			
GEM	1	14629 ✓			
TRUMPET	1	3678 ✓			
ROYAL ARTHUR	1	3634 ✓	JAN		
STAR #1 FRAC.	1	3306 ✓	JULY		
STAR #2 FRAC.	1	3307 ✓	JULY		
STAR #3 FRAC.	1	3768 ✓	JULY		
STAR #4 FRAC.	1	3789 ✓	JULY		
ST-1	6	3769 ✓	JULY		
ST-2	2	3835 ✓	AUG		
ST-3	2	4861 ✓	OCT		
ST-6 FRAC.	1	4862 ✓	OCT	M. A. Kaufman	KAUFMAN 273674
				AS AN AGENT FOR	
				RYAN EXPLORATION	299795
				CO. LTD.	
				C/O KNOX, KAUFMAN, INC.	
				P.O. Box 14336	
				SPOKANE, WA 99214	
				USA	

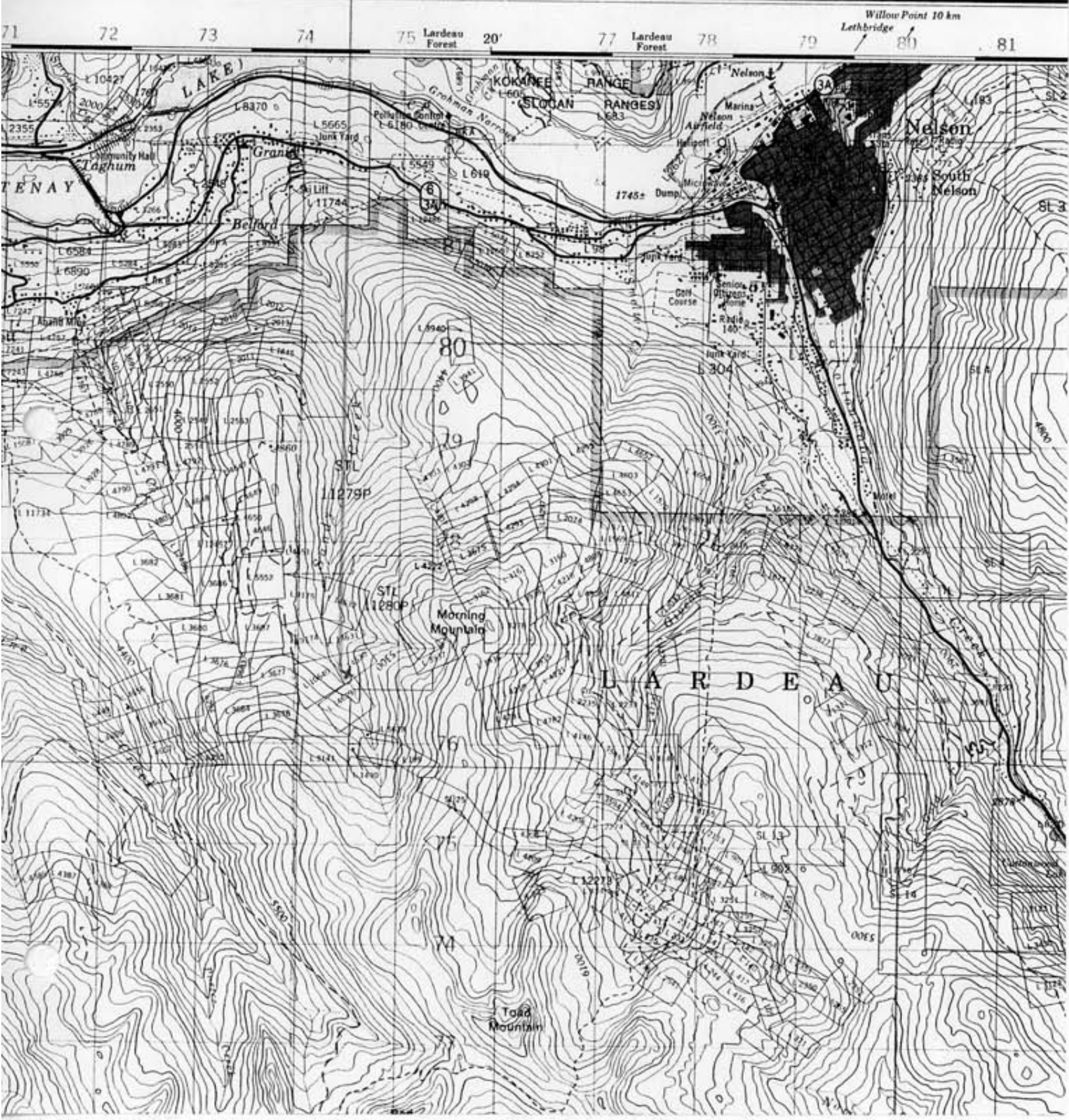
* May be signed by agent on behalf of owner.

2855°

1:50,000

S-24

CA



INTRODUCTION

The Star Claim group is located approximately 8.3 kilometres SW of Nelson, at elevations of from 1363 metres to 1818 metres. It occupies a narrow plateau between Eagle and Sandy Creeks, as well as a part of the slope east of Sandy Creek. Access is via the old Kenville Mine road from Blewett or the Giveout Creek Forestry Road starting at the Nelson-Salmo highway.

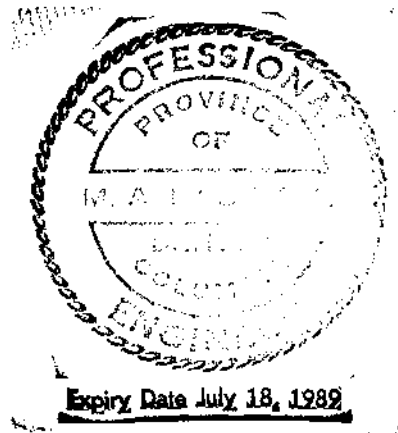
The Star Claim group is comprised of 25 Crown Granted Claims, one reverted Crown Grant, and 15 mineral claim units (see attached Notice to Group), within which are 3 old mines which have in the past produced small amounts of gold, copper, and silver; the Eureka, Star and Alma N. The last attempt at production was an underground development program on the Eureka Mine in the late 1950's.

During 1983 and 1984 Ryan Exploration Co. Ltd. began acquisition of the property. Since 1984 Ryan has conducted extensive geochemical and geophysical surveys, trenching and rotary-reverse circulation drilling. Extensive areas of low grade mineralization have been delineated with scattered pockets of higher grade within intrusive and volcanic rocks.

The work covered in this report consists of one rotary-reverse circulation hole of 3-3/4" diameter drilled to a depth of 497' (150 metres).

DRILLING REPORT

The purpose of drill hole S-24 was to probe an area of geophysical (I.P.) response which was covered by overburden. The attached drill log and assay forms provide detailed results. Generally, the formations encountered were felsic to more mafic units of the Rossland volcanics which carry up to 5% sulfides by volume, chiefly pyrite. Though some anomalous gold values are present, nothing of economic consequence is evident.



M. A. Kaufman
Sept. 27, 1988

STATEMENT OF QUALIFICATIONS

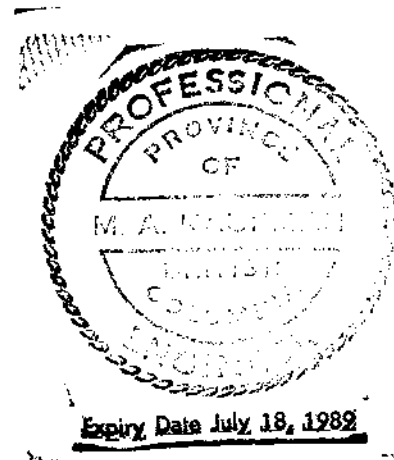
re. M. A. KAUFMAN

I, M. A. Kaufman, do hereby certify:

1. That I am a consulting geologist and President of the geological consulting and mineral exploration firm of Knox, Kaufman, Inc., P. O. Box 14336, Spokane, WA. 99214 U.S.A.
2. That, I am a graduate of Dartmouth College, 1955, with a B.A. Degree, major in Geology.
3. That, I am a graduate of the University of Minnesota (Minneapolis), 1957 with an M.S. Degree, major in Geology, minor in Mining Engineering.
4. That, I have practiced my profession for thirty-one years.

Dated at Spokane, Washington, this 26th day of September, 1988.

M. A. Kaufman



M. A. Kaufman
Sept 27, 1988

STATEMENT OF QUALIFICATIONS

re. ALEXANDER S. FRASER

I, Alexander S. Fraser, do hereby certify:

1. That I am a consulting geologist, and have practiced my profession for 8 years.
2. That, I am a graduate of University of Alberta, with a BSC Degree; major in geology, minor in physics.

Dated at Nelson, B.C. this 28th day of September, 1988.

Alexander S. Fraser

Alex Fraser

COST OF ROTARY - REVERSE CIRCULATION
DRILL HOLE, S-24

0-400'	400 x 12.75/ft	→	\$ 5100
400-497'	97 x 18.00/ft	→	1746
Travel time (TT)	1.5 hrs x 65.00/hr	→	97.50
	TOTAL	→	\$ 6,943.50



SDS DRILLING LTD.

4636 FIRST STREET S.E.
CALGARY, ALBERTA T2G 2L3
PHONE: (403) 287-1460

1348 EAST GEORGIA STREET,
VANCOUVER, B.C. V6L 2A8
PHONE: (604) 254-6217

U.S. Borax & Chemical Corp.
3075 - Wilshire Blvd.
Los Angeles, California
U.S.A. 90010

Invoice **3154**

Date July 26, 1988

Client - Project No. M988857576-000

SDS - Job No. 88-84-14

SDS Rig No. 601-19

Billing Period July 2, 1988 To July 20, 1988 Location Nelson, B.C

Charges as per attached summary

Footage	2348 Ft. @ \$12.75/Ft.	29937.00
	97 Ft. @ \$18.00/Ft.	1746.00
Stand by	1.25 Hrs. @ \$140.00/Hr.	175.00
Day work	24.5 Hrs. @ \$180.00/Hr.	4410.00
Crew Travel	9.0 Hrs. @ \$65.00/Hr.	585.00

Consumables

1 - 6 3/4 Retip Rock Bit @ \$400.00=	\$400.00	
10' - 5 9/16" Casing (Quote) @ \$7.67 = (from Russelsteel)	76.70	
	<u>\$476.70</u>	
Plus 6% B.C. Tax	28.60	505.30
Plus 15% Handling		75.80

Terms:

SDS Job 88-84-14
SDS Rig 601-19

Drilling Summary
U.S. Borax

Contract #M988857576-00
Location: Star Project
Nelson, B.C.

Well #	Date	Footage		T.D.	Standby	Hourly	T.T.
		0-400	400-600				
S-24	2/7 to 5/7/88	400	97	497			1.5
S-25	5/7 to 8/7/88	359		359	.75	1.5	1.0
S-26	8/7 to 11/7/88	427		427			2.0
S-27	11/7 to 13/7/88	229	O.B. - 60'	289		6.75	1.0
					1- 6 3/4	Retip Tricone	
S-28	13/7 to 16/7/88	295	O.B. - 15	310	.5	5.75	1.0
S-29	16/7 to 18/7/88	314	Casing-50'	364		5.75	1.0
				5 1/2" Casing	1 - Odex	Reamer	
S-30	18/7 to 20/7/88	324	O.B. - 41'	365		4.75	1.5
		<u>2348</u>	<u>97</u>	<u>2611</u>	<u>1.25</u>	<u>24.5</u>	<u>9.0</u>

SAMPLE NUMBER	FOOTAGE	DRILL RECOVERY	HOLE CONDITION	SAMPLE CONDITION	MINUTES	COLOR DRY	COLOR WASHED	WASH RECOVERY	CLAY %	CaCO ₃ %	FeOx %	FREE QUARTZ % (GFELD)	SULFIDE %	ROCK TYPE	GEOLOGY	ASSAYS			REMARKS
																Au AA ppm	Ag AA ppm	Cu ppm	
80	85					lt grey	dark grey			low	0	0	<1	fol. basalt					
85	90					med grey	↓				minor	0	1	↓					
90	95					"	↓				0	5	TR	↓					
95	100					lt grey	mixed				TR	10	0	altered.					
100	105				slow or	med grey	dark grey				0	0	0	fol. basalt					
105	110						"				TR		<1						
110	115						med grey				0								
115	120					↓	"												
120	125	less			↓	lt grey	dark grey				↓	↓	↓						
125	130					med grey				↘	abund								
130	135					"					0								dry material during parts of interval - not much of which went into the assay split
135	140					dark grey							↓	↘					
140	145					med grey							TR						
145	150												<1						
150	155												TR						
155	160												<1						
160	165						med grey						0						have been in mixture for awhile - prev. fol. basalt (w/ py) - black basalt, green epid, amber (Fe st), signif. lt. grey (rhy)
165	170					↓	"				↓	↓	↘						
170	175					dark grey	mixed (orange)				minor	5	↓						
175	180					med grey	dark grey				0	0	<1						
180	185												↓						
185	190												0						
190	195					↓	↓			↓	↓	↓	TR	↓					

assay/reject ratio highly variable

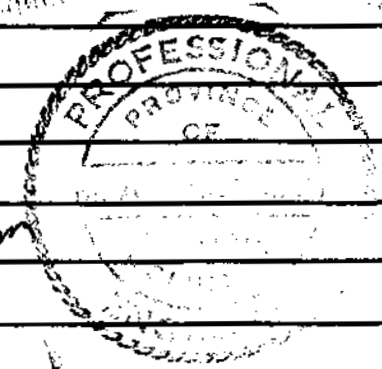
SAMPLE NUMBER	FOOTAGE	DRILL RECOVERY	HOLE CONDITION	SAMPLE CONDITION	MINUTES	COLOR DRY	COLOR WASHED	WASH RECOVERY	CLAY %	CaCO ₃ %	FeO ₂ %	FREE QUARTZ % (FIELD)	SULFIDE %	ROCK TYPE	GEOLOGY	ASSAYS			PROJECT STAR	SHEET 3 OF 5
																Au AA ppm	Ag AA ppm	Cu ppm	REMARKS	DRILL HOLE NO. S-24
195	200					med grey	dark grey			low	0	45	0	tbl. basalt						
200	205											0	TR							
205	210												0							
210	215						lt-dark grey													
215	220	more				med brownish grey	mixed (orange)				abund	5								216' - hammer problems - chips from S-21 artesian?
220	225					med grey	dark grey				0	0	TR							
225	230						"						<1							
230	235						med grey						TR							
235	240						"						TR	felsic interval						
240	245						dark grey						<5							
245	250	more				lt brownish grey	mixed				minor	30	55							'mixture'
250	255					med grey	dark grey				TR	0	0							
255	260					"					TR		<5							
260	265					dark grey					0	5	0							'mixture' - most of the chips are black 'basalt'
265	270					med grey	med. grey				TR		<1							schist, py
270	275									mod.	TR		<5	felsic interval						" "
275	280									low	0									
280	285																			
285	290																			
290	295					dark grey					TR		0							
295	300					med grey					0									
300	305					"														
305	310					dark grey	white			mod.			<5							

generally 300's slower drilling

SAMPLE NUMBER	FOOTAGE	DRILL RECOVERY	HOLE CONDITION	SAMPLE CONDITION	MINUTES	COLOR DRY	COLOR WASHED	WASH RECOVERY	CLAY %	CaCO ₃ %	FeO %	FREE QUARTZ % (S.F.E.D.)	SULFIDE %	ROCK TYPE	GEOLOGY	ASSAYS			REMARKS
																Au AA ppm	Ag AA ppm	Cu ppm	
310	315					med grey	mixed			low	0	5	<1	basalt & felsic intercal.					
315	320						dark grey					0		fol basalt.					
320	325					↓	med grey						↓						
325	330					lt. grey	"						TR						
330	335					dark grey	dark grey						<1						
335	340					"	lt-dark grey				5	5	↓	↓ fol dacite.					
340	345					lt. grey	med grey						<5	fol dacite.					
345	350					"	lt-med grey						<1						'mixture'
350	355					med grey	lt. grey						<5						lt. grey rhy? (foliated) with py
355	360					lt grey							<5						
360	365					"							<1						
365	370					med grey				5			↓						
370	375										↓	↓	<5	✓					minor amber (green) chips
375	380										TR	10	<1						
380	385										0	0							
385	390																		
390	395					↓	↓					5	5						
395	400					fast or dark grey	med grey				5		↓	mafic intercal.					'mixture' - mostly dark - no green
400	405					↓	"						↓						lt. grey rhy? + med. grey chips (foliated) - minor py
405	410					slow lt. grey	lt grey					↓	TR						mostly schisty lt grey rhy? with py - minor black, amber, green chips.
410	415											<5	<1						
415	420											0	TR						rhy minor amber
420	425					↓	↓			↓	↓	0	TR	↓					

SAMPLE NUMBER	FOOTAGE	DRILL RECOVERY	HOLE CONDITION	SAMPLE CONDITION	MINUTES	COLOR DRY	COLOR WASHED	WASH RECOVERY	CLAY %	CaCO ₃ %	FeO _x %	FREE QUARTZ %	SULFIDE %	ROCK TYPE	GEOLOGY	ASSAYS			REMARKS
																Au AA ppm	Ag AA ppm	Cu ppm	
425	430					lt. grey	lt. grey			10	0	5	TR	lt. basalt to granod.					-minor amber
430	435					med grey						0		fol. dacite.					
435	440					lt. grey													
440	445					"													
445	450					med grey	mixed					25?							med grey foliated chips -also large qtz & small amber chips
450	455						"					0		lt basalt andesite					
455	460						med grey												med grey fol. -mixture (amber, green, qtz) py
460	465					dark grey	dark grey						0						dark grey fol. chips -TR py
465	470					med grey	med grey						<1						med. grey fol. -no py noticed
470	475						"						<5						med grey fol. some py
475	480						dark grey + white						<1						dark grey & some lt grey chips (both foliated) → med grey schist?
480	485						dark grey						<5						med grey fol with py
485	490						"						<1						
490	495						med grey						TR						
495	497					dark grey	dark grey						<1						dark grey foliated -some white chips

M. A. Kaufman
 Sept. 27, 1958



Expiry Date July 18, 1962

USBRC CHEMICAL ANALYSIS REPORT

DATE : 03-AUG-88
 SET NUMBER : CN88RX17
 SUBMITTER : KNOX-KAUFMAN/SPOKANE
 REMARKS :

PROJECT : CAN RYAN EXP 88
 SUPERVISOR : J.ASHLEMAN/EXP

RECEIVED
 AUG 08 1988
 SPY/SEE
 02/11/88

FIELD NUMBER	AU/AA PPM	AG/AA PPM	CU PPM
S-24 25-30	0.06	1.7	216.
S-24 30-35	0.06	1.8	191.
S-24 35-40	0.05	1.9	218.
S-24 50-55	0.08	2.9	463.
S-24 55-60	0.11	2.9	337.
S-24 60-65	0.17	2.2	246.
S-24 65-70	0.17	2.4	430.
S-24 70-75	0.05	1.9	208.
S-24 75-80	0.09	1.7	314.
S-24 80-85	0.57	2.6	234.
S-24 85-90	0.18	1.9	187.
S-24 90-95	0.09	1.7	197.
S-24 95-100	0.09	1.7	172.
S-24 100-105	0.03	1.7	133.
S-24 105-110	0.03	1.7	119.
S-24 110-115	0.05	1.7	186.
S-24 115-120	0.21	2.9	365.
S-24 120-125	0.08	1.9	327.
S-24 125-130	0.09	2.2	271.
S-24 130-135	0.15	1.9	329.
S-24 135-140	0.06	1.4	137.
S-24 140-145	0.12	1.7	192.
S-24 145-150	0.09	1.7	270.
S-24 150-155	0.05	1.4	228.
S-24 155-160	0.06	1.2	177.
S-24 160-165	0.09	1.2	132.
S-24 165-170	0.08	1.2	217.
S-24 170-175	0.06	1.4	267.
S-24 175-180	0.30	2.2	242.
S-24 180-185	0.09	1.4	305.
USB-2	3.88	2.4	11.
S-24 185-190	0.11	1.9	886.
S-24 190-195	0.09	1.4	353.

USBRC CHEMICAL ANALYSIS REPORT

DATE : 03-AUG-88
 SET NUMBER : CN88RX18
 SUBMITTER : KNOX-KAUFMAN/SPOKANE
 REMARKS :

PROJECT : CAN RYAN EXP 88
 SUPERVISOR : J. ASHLEMAN/EXP

FIELD NUMBER	AU/AA PPM	AG/AA PPM	CU PPM
S-24 195-200	0.08	1.8	607.
S-24 200-205	0.08	1.9	525.
S-24 205-210	0.12	2.4	569.
S-24 210-215	0.08	2.2	573.
S-24 215-220	0.05	1.9	206.
S-24 220-225	0.05	2.4	369.
S-24 225-230	0.16	1.7	240.
S-24 230-235	0.16	1.9	219.
S-24 235-240	0.09	1.9	190.
S-24 240-245	0.12	1.9	346.
S-24 245-250	0.05	1.9	266.
S-24 250-255	0.09	2.4	690.
S-24 255-260	0.03	1.9	529.
S-24 260-265	<0.02	1.9	196.
S-24 265-270	0.14	3.8	790.
S-24 270-275	0.14	2.2	263.
S-24 275-280	0.30	2.4	246.
S-24 280-285	0.80	2.6	169.
S-24 285-290	0.12	1.9	190.
S-24 290-295	0.03	1.9	307.
S-24 295-300	0.03	1.7	144.
S-24 300-305	0.16	1.9	498.
S-24 305-310	0.09	1.4	205.
S-24 310-315	0.06	1.9	800.
S-24 315-320	<0.02	1.0	88.
S-24 320-325	0.11	1.2	180.
S-24 325-330	<0.02	1.4	319.
S-24 330-335	0.06	2.2	315.
USB-2	4.02	2.6	11.
S-24 335-340	0.11	2.2	321.
S-24 340-345	0.05	1.4	400.

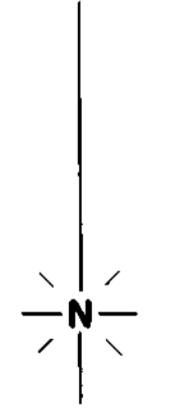
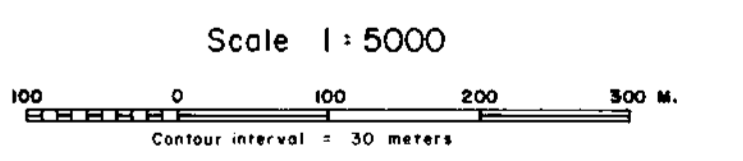
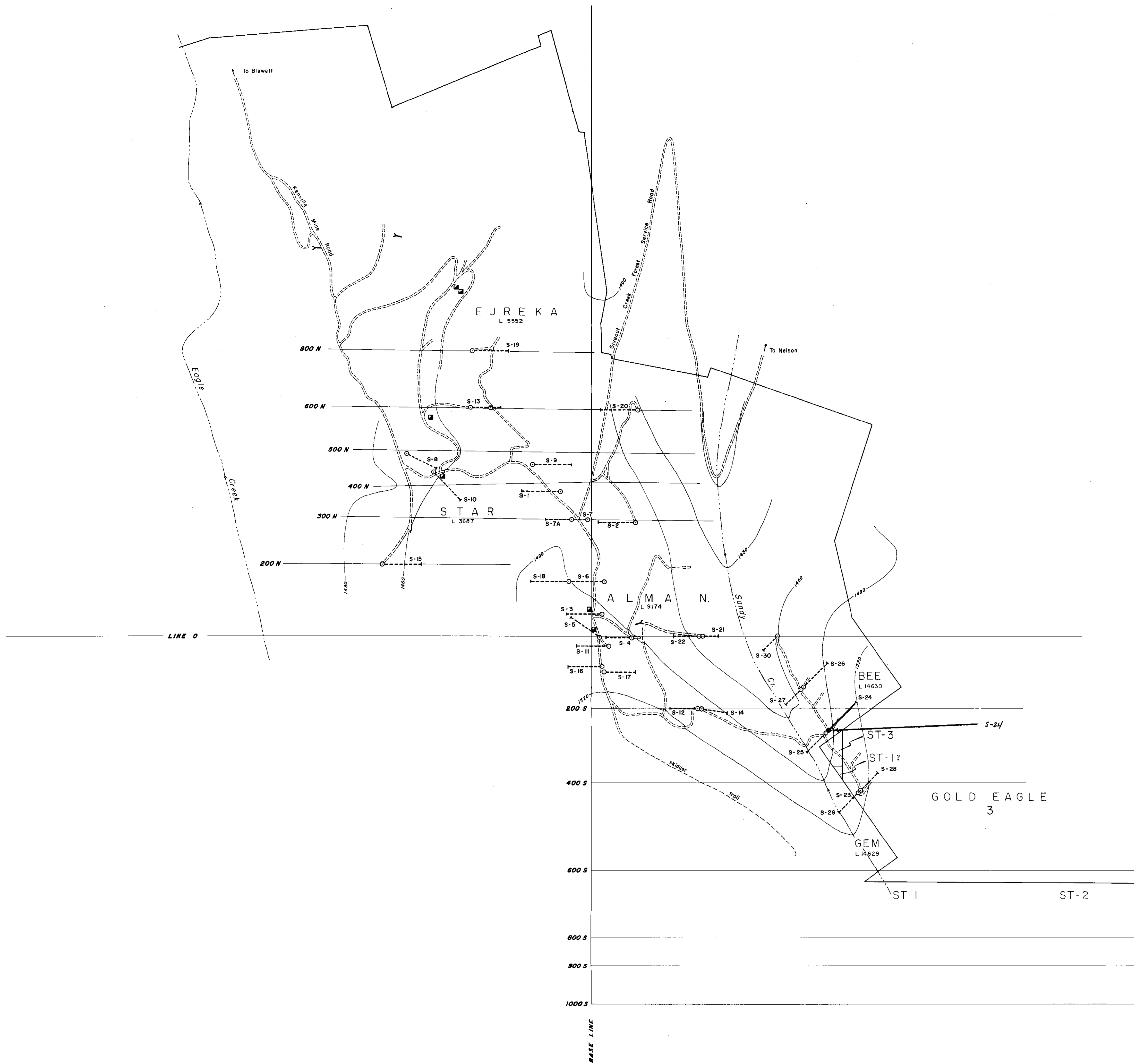
RECEIVED
 AUG 08 1988
 LABORATORY
 DIVISION

USBRC CHEMICAL ANALYSIS REPORT

DATE : 03-AUG-88
 SET NUMBER : CN88RX19
 SUBMITTER : KNOX-KAUFMAN/SPOKANE
 REMARKS :

PROJECT : CAN RYAN EXP 88
 SUPERVISOR : J.ASHLEMAN/EXP

FIELD NUMBER	AU/AA PPM	AG/AA PPM	CU PPM
S-24 345-350	0.06	1.2	214.
S-24 350-355	0.15	1.0	74.
S-24 355-360	0.12	1.2	134.
S-24 360-365	0.08	1.2	216.
S-24 365-370	0.08	1.4	331.
S-24 370-375	0.06	1.0	126.
S-24 375-380	0.08	1.0	92.
S-24 380-385	0.14	1.2	99.
S-24 385-390	0.09	1.0	58.
S-24 390-395	0.09	1.2	26.
S-24 395-400	0.06	1.4	212.
S-24 400-405	0.27	1.9	390.
S-24 405-410	0.09	1.4	74.
S-24 410-415	0.06	1.0	86.
S-24 415-420	0.08	1.0	275.
S-24 420-425	0.09	1.2	311.
S-24 425-430	0.08	1.0	49.
S-24 430-435	2.52	1.7	46.
S-24 435-440	0.08	1.2	398.
S-24 440-445	0.08	1.2	129.
S-24 445-450	0.08	1.4	522.
S-24 450-455	<0.02	1.2	480.
S-24 455-460	<0.02	1.4	290.
S-24 460-465	<0.02	1.2	189.
S-24 465-470	<0.02	1.0	38.
S-24 470-475	<0.02	1.2	46.
S-24 475-480	<0.02	1.0	39.
S-24 480-485	<0.02	1.0	15.
S-24 485-490	<0.02	1.0	71.
USB-2	4.50	2.4	11.
S-24 490-495	0.05	1.2	247.
S-24 495-497	0.05	1.2	206.



M. G. Kaufman
Sept. 21, 1984

U.S. BORAX NORTHWEST EXPLORATION

STAR PROSPECT
NELSON MINING DISTRICT
BRITISH COLUMBIA

**ROTARY DRILL HOLE
LOCATION MAP**

RE: STAR GROUP ASSESSMENT REPORT

DRAWING RECORD		GEOLOGICAL BRANCH	
DATE	BY	DATE	BY
7/31/84	W. Reich		
8/11/84	Revised		
DWG. NO.			
SP-BC-22-0080			

17-806

PLATE