

ARIS SUMMARY SHEET

District Geologist, Kamloops

Off Confidential: 89.06.21

ASSESSMENT REPORT 17816

MINING DIVISION: Vernon

PROPERTY: Lumby  
LOCATION: LAT 50 15 53 LONG 118 55 26  
UTM 11 5569616 362879  
NTS 082L07W

CLAIM(S): B.S. 3  
OPERATOR(S): Zicton Gold  
AUTHOR(S): Allen, A.R.  
REPORT YEAR: 1988, 15 Pages

COMMODITIES

SEARCHED FOR: Gold, Silver

GEOLOGICAL

SUMMARY: The claim area is underlain by the Proterozoic Shuswap Metamorphic Complex consisting of gneiss and phyllite, Permo-Pennsylvanian Cache Creek Group sediments and Upper Triassic Nicola Group argillite, andesite and tuff. A small diorite stock occurs. Structure consists of folding and major faults. Gold, silver, minor galena, chalcopyrite and pyrrhotite occur in and are associated with fault zones.

WORK  
DONE: Geophysical  
EMGR 4.8 km; VLF  
Map(s) - 2; Scale(s) - 1:2500  
MAGG 4.8 km  
Map(s) - 2; Scale(s) - 1:126 720, 1:2500

RELATED  
REPORTS: 16349

LOG NO: 1006	RD.
ACTION.	
FILE NO.	

REPORT  
ON THE  
LUMBY PROPERTY  
VERNON MINING DIVISION  
BRITISH COLUMBIA

SUB-RECORDER  
RECEIVED  
SEP 19 1988  
M.R. # ..... \$ .....  
VANCOUVER, B.C.

For: ZICTON GOLD LIMITED  
602-543 Granville Street  
Vancouver, B.C.  
V6C 1X8

FILMED

By: ALLEN GEOLOGICAL ENGINEERING LTD.  
702-2025 Bellevue Avenue  
West Vancouver, B.C.  
V7V 1B9

September 15 1988 Revised

GEOLOGICAL BRANCH  
ASSESSMENT REPORT

17,816

# CONTENTS

	<u>Page No.</u>
TITLE PAGE AND SUMMARY	1 & 2
A. INTRODUCTION	3
B. LOCATION	3
C. PROPERTY	3
D. PHYSIOGRAPHY	4
E. HISTORY	4
F. THEORY	4
G. GEOLOGY	4 & 5
H. SURVEYED GRID	5
I. MAGNETOMETER SURVEY	5 & 6
J. ELECTROMAGNETIC SURVEY	6
K. SURVEY RESULTS	6
L. DISCUSSION	6
M. SUMMARY	6
N. CONCLUSIONS	7

REFERENCES

COSTS STATEMENT

CERTIFICATE

CONSENT

MAPS:

1. Location
2. Mineral Claims
3. Property and Topography
4. Mineral Claims & Adjoining Quinta Property
5. Geology
6. Magnetometer Survey
7. Electromagnetic Survey
8. Electromagnetic Survey, Filtered and Contoured.

A. INTRODUCTION

Magnetic and electromagnetic surveys were conducted over the B.S.-3 mineral claim held by Zicton Gold Limited in two phases. Phase #1 was from June 10-29, 1987. An assessment report was submitted, including a statement of costs amounting to \$11,908.72.

Phase #2 was conducted over most of the southern and eastern areas from July 4 to September 29, 1987.

This report is submitted for assessment requirements, including a costs statement amounting to \$8,401.08 recorded June 21, 1988.

B. LOCATION

The Zicton Gold property is located in south central British Columbia, 30 Kilometres east of Vernon, and 1.7 kilometres east of Lumby.

Access is via Highway #6, and secondary roads over the claims area.

C. PROPERTY

Zicton Gold Ltd. hold the following located mineral claims:

<u>Claim</u>	<u>Record Number</u>	<u>Expiration Date</u>
Hol 1	2130	July 1989
Hol 2	2131	July 1989
Hol 3	2132	July 1989
Hol 4	2133	July 1989
BS-3	2004	Sept 1991

The following mineral claims are held by Zedko Petroleum Ltd., and are under option by Zicton Gold Ltd.

OK	2016	Sept 1 1989
HAZ 5	1845	July 2 1989

Note 1. B.C. Department Mines Forms G in Appendix.

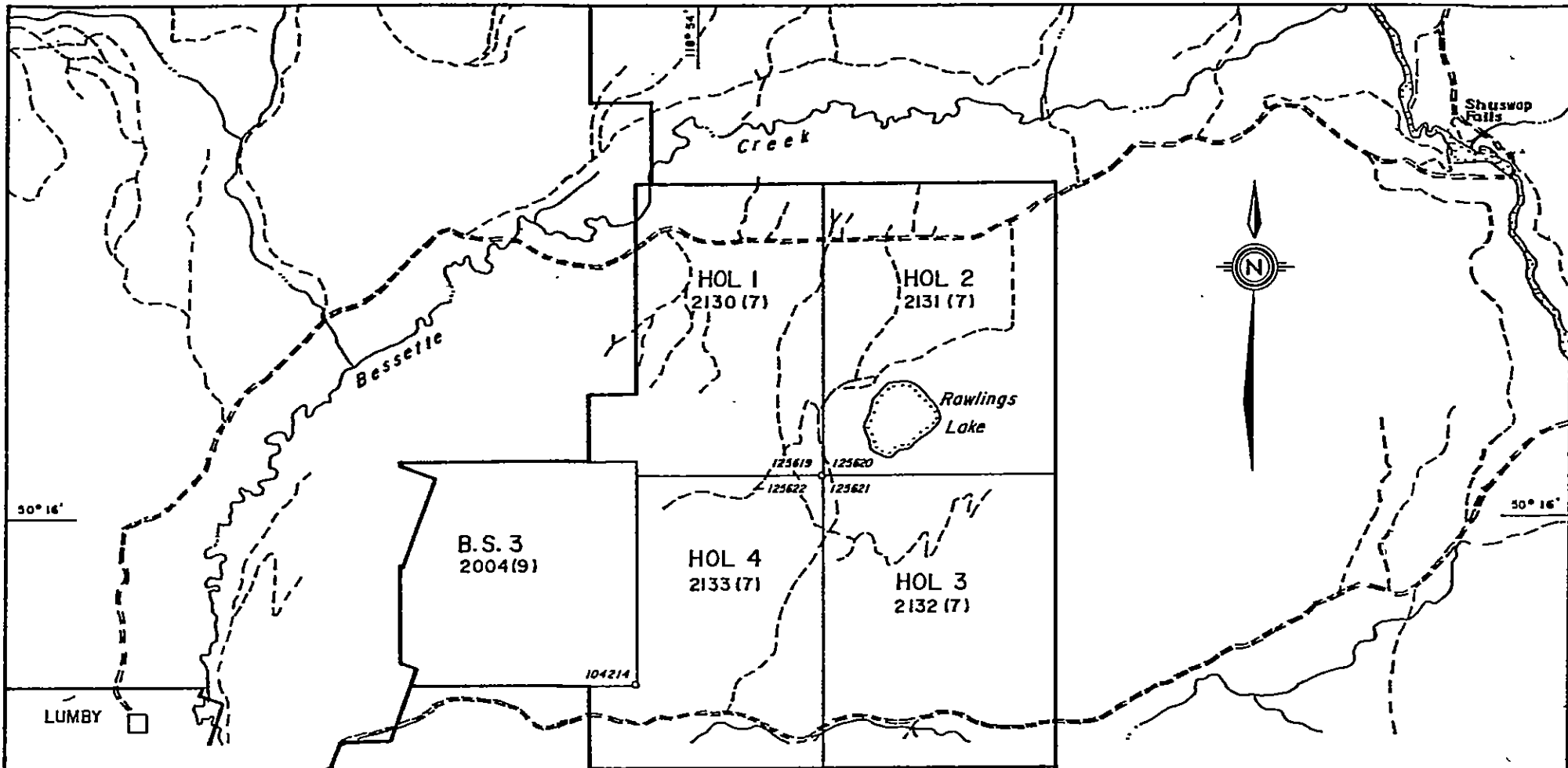


ZICTON GOLD LIMITED

LOCATION MAP

SCALE: 1" = 136 Mils.

Drawn by	Date MAY 1987	ALLEN GEOLOGICAL ENGINEERING LTD.
Checked by <i>RJA</i>	Dwg no. 1	



ZICTON GOLD LTD.

LUMBY PROPERTY

VERNON MINING DIVISION, B. C.

CLAIM MAP

*Alfred B. Allan*

DATE:  
OCT., 1986

SCALE:  
1:50,000

FIGURE No. 2  
A. R. A.

**D. PHYSIOGRAPHY**

The area is typical of interior British Columbia. Lumby is located at an elevation of 500 metres above sea level and elevations of open sparsely wooded hills range up to 1,000 metres above sea level. Small streams and lakes provide irrigation for the cultivated and range areas occupying the lower elevation.

**E. HISTORY**

Gold was discovered near Lumby around the turn of the century, but no significant production was attempted until the 1960's. From 1974 to 1980 silver, lead, zinc and copper were mined and milled on Saddle Mountain, and in 1980 the 50 ton per day mill was increased to 150 tons capacity per day.

Production was estimated to total 30,000 tons. The property was acquired by Quinto Mining Corporation, and expanded production is planned for 1989.

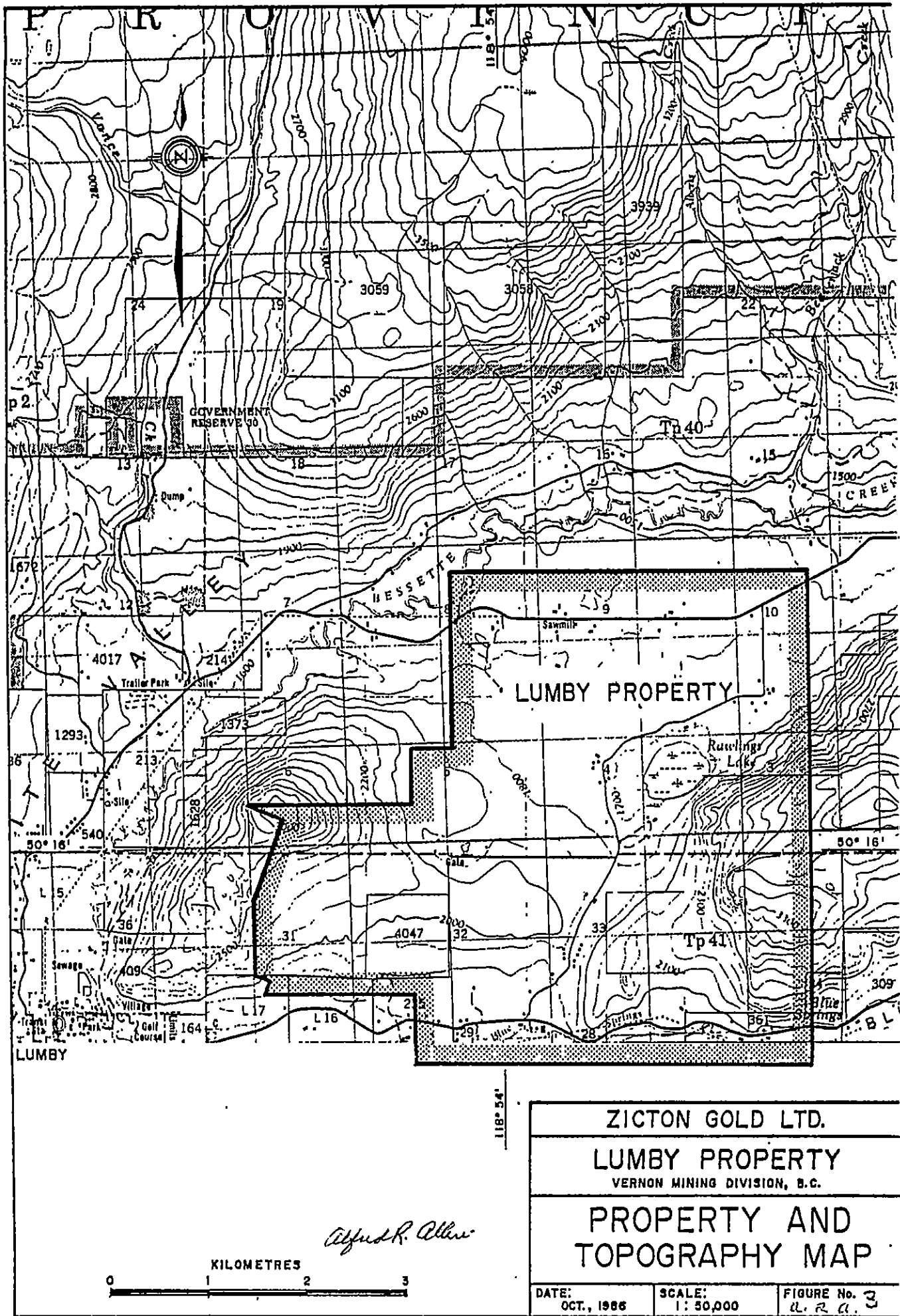
Zincton Gold Ltd. has acquired the B.S.-3 and Hol 1-4 claims adjoining the Quinto mine on the east ads shown on Map #4.

**F. THEORY**

Detailed exploration over the Quinto property, now under development, has determined that ore bodies trend easterly. The geophysical anomalies so far detected by Zincton Gold indicate that the Quinto ore bodies extend well onto the B.S.-3 claim.

**G. GEOLOGY**

The geology of the Lumby area has been mapped by the Geological Survey of Canada, and is published in Memoir 296 and Open File Paper 637.



*Alfred R. Allen*

ZICTON GOLD LTD.		
LUMBY PROPERTY		
VERNON MINING DIVISION, B.C.		
PROPERTY AND TOPOGRAPHY MAP		
DATE: OCT, 1966	SCALE: 1:50,000	FIGURE No. 3 R. R. A.



## G. Geology, Cont'd...

The stratigraphy and structure of the area is as follows:

Archaean or later gneiss, schist, quartzite marble, slate and phyllite.

Sicamous formation of limestone, sericite and graphite schists.

Nicola, Upper Triassic andesite, limestone conglomerate and basalt.

Monashee gneiss, schist, Phyllite and quartzite.

Kamloops Group, volcanics, sandstone, shale, conglomerate, and coal.

A granitic stock is located on the south boundary of the Quinto and Zicton properties.

Faults strike southwest, north and southeast. Fold axes trend southeasterly across the southern Quinto and Zicton Gold properties.

Mineralized shears on the Quinto property contain gold and silver along with lead and zinc sulphides. Because of extensive overburden, these are not exposed on the Zicton Gold property, but are indicated by airborne and ground geophysical surveys.

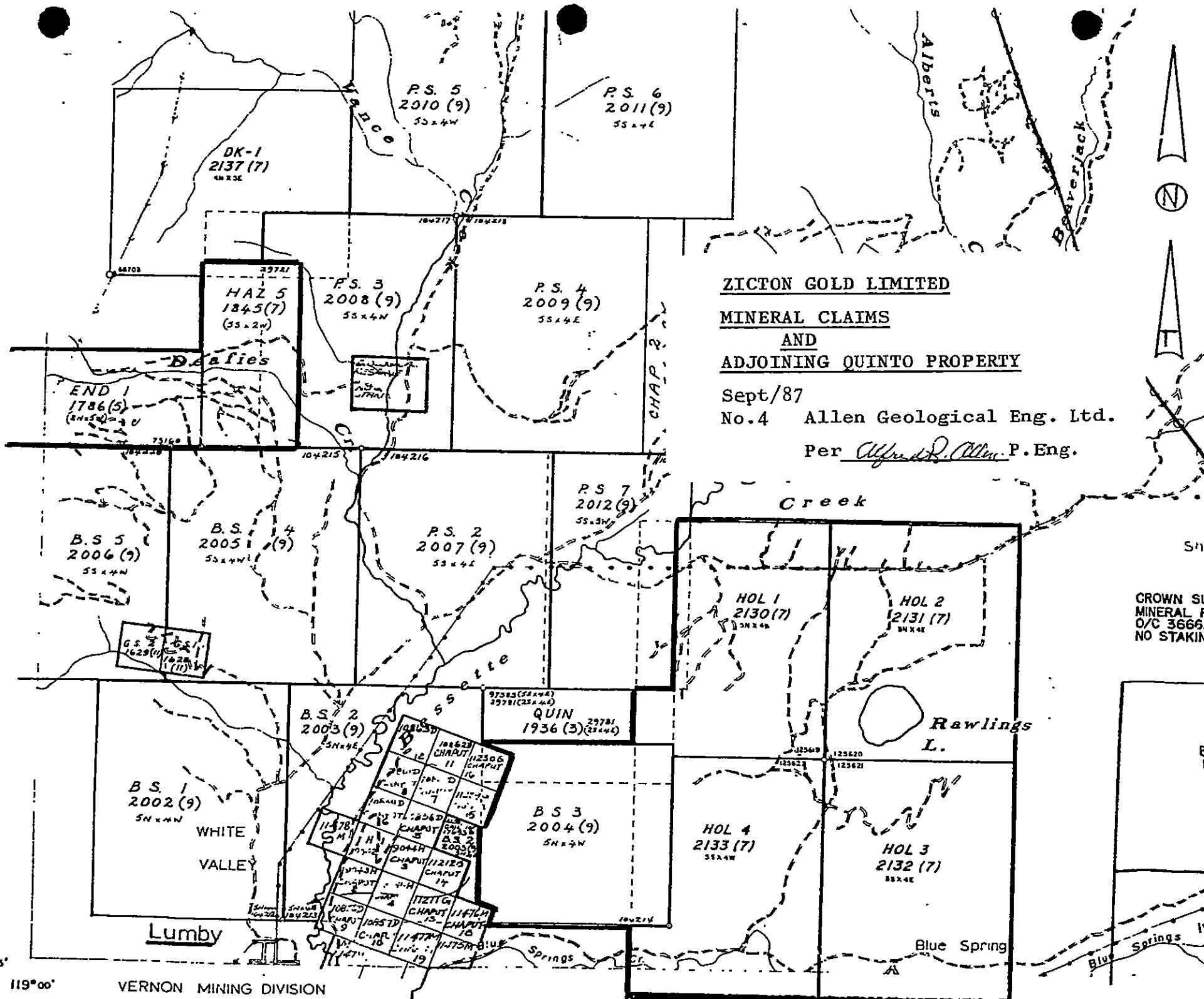
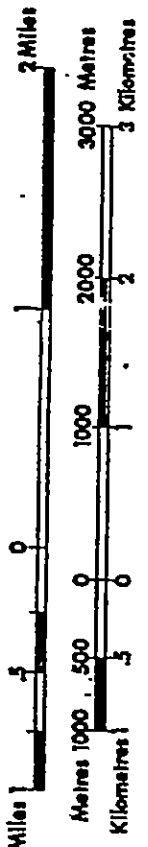
## H. SURVEYED GRIDS

A 60 metre by 15 metre grid was surveyed over the B.S.-3 mineral claim by chain and compass.

Base lines were located along the north boundary of the claim and the south fence on and near the south boundary.

## I. MAGNETOMETER SURVEY

A magnetometer survey was conducted over the grid area by Mr. A.T. LaRose of Prospecting Geophysical Services, 11914-212 Street, Maple Ridge, B.C. A scintrex MP2 magnetometer was used by Mr. LaRose for Phase #1 from June 10-29, 1987, and for Phase #2 from July 4 - September 29, 1987.



**ZICTON GOLD LIMITED**  
**MINERAL CLAIMS**  
**AND**  
**ADJOINING QUINTO PROPERTY**

Sept/87  
 No.4 Allen Geological Eng. Ltd.  
 Per Alfred P. Allen P. Eng.

CROWN SUE  
 MINERAL RE  
 O/C 3666.1  
 NO STAKING

**I. Magnetometer Survey, Cont'd...**

Assistance was provided by Alfred R. Allen, and Ralph L. Nelson of Vancouver, and R. Herzig and D. Mehner of Vernon.

Calculations and preliminary and final mapping was completed by Mr. LaRose. Report preparation was provided by Alfred R. Allen.

**J. ELECTROMAGNETIC SURVEY**

Concurrent with the magnetometer survey a V.L.F. Ronka 16 electromagnetic survey was conducted over most of the grid by Mr. LaRose with the same field assistants. Survey results were recorded, calculated contoured and mapped by Mr. LaRose.

**K. SURVEY RESULTS**

The surveys were extended to include most of the southern and eastern areas of the grid, July 4 - September 29, 1987. Medium to low response indicated lack of anomalous zones.

**L. DISCUSSION**

On the lower southern and eastern areas of the grid on the B.S.-3 claim, the obvious increased depth of overburden may have a blanket effect, lessening the possibility of the magnetic and electromagnetic detection of bedrock geology.

**M. SUMMARY**

Well defined magnetic and electromagnetic anomalous zones were detected on the northwestern area of the B.S.-3 claim. These are either the easterly extensions of anomalies mapped on the adjoining Quinto property or a strong 450 by 750 metre mineral deposit on the Zicton Gold property.

**N. CONCLUSIONS**

It is herewith concluded that the northeastern area of the Zicton Gold property warrants a detailed exploration programme.

In addition, Hole 1-4 claims warrant geological and geophysical surveys.

Respectfully submitted,

**ALLEN GEOLOGICAL ENGINEERING LTD.**

Per Alfred R. Allen, P. Eng.  
Alfred R. Allen

September 15, 1988.

REFERENCES

- Jones, A.G., GSC Mem 296, Vernon Map Area
- Landsberg, N.R., Geology, Geophysics, Geochemistry, and Trenching at Lumby Mine near Vernon, Nov. 24/83.  
Map, Geology, Fig. 3 Quinto Mining Corporation Nov./83.
- White, Glen E., Vector Pulse Electromagnetic Survey Chap. 8 (BS-3) claim Oct./84.
- Kurnan, D.L., Assessment Report, BS and PS claims Groups Vernon M.D., B.C. Dec./1986.  
Sushwap Falls N.T.S. Map 82 L/7.
- Okulitch, A.V., Et, Al, GSC Paper 637-5 sheets.
- Smith, P.A., Et, Al, Airborne Survey Mag. and E.M. Quinto Mining Corporation, Lumby Project Dighem Surveys & Processing Inc. Mississauga, Ont. Oct./86.
- Allen, A.R., The Lumby Property, Vernon, M.D. Zedko Petroleums Ltd. July/84.

ZICTON GOLD LIMITED  
602-543 Granville Street  
Vancouver, B.C.  
V6C 1X8

COSTS STATEMENT PHASE #2

Geophysical Surveys Completed: July 4 - Sept. 29, 1987

Location: The B.S.-3 mineral claim, Vernon M.D., B.C.

BY ALLEN GEOLOGICAL ENGINEERING LTD.

Operator: PROSPECTING SERVICES, Maple Ridge, B.C.

5 days @ \$200/day A.T. LaRose -	\$1,000.00
Calculations and maps -	600.00
Accommodation & meals,	
5 days @ \$65/day	325.00
Vehicle rental,	
5 days @ \$65/day -	325.00
Alfred R.A. Allen,	
Fees 8.5 days @ \$250/day -	2,125.00
Travel and Accommodation,	
A.R. Allan & R. Nelson -	1,278.32
J. Hilton, 3 days,	
Accommodation, food, travel -	596.76
Truck, one 4 x 4, rental -	425.00
Wages, D. Mehner, helper,	
Vernon, B.C. -	946.00
Wages, R. Herzig, helper,	
Vernon, B.C. -	<u>780.00</u>
	<b><u>\$8,401.08</u></b>

*Alfred R. Allen*

ALLEN GEOLOGICAL ENGINEERING LTD.  
#702-2025 Bellevue Avenue  
West Vancouver, B.C.  
V7V 1B9

(604) 926-4785

CERTIFICATE

September, 1988

I, Alfred R. Allen, certify that:

I am a graduate of the University of British Columbia and hold the following degrees therefrom:

BASc	Geological Engineering	1939
MASc	Geological Engineering	1941

I am a Life Member of the Association of Professional Engineers of the Province of British Columbia.

I have practiced my profession for the past forty years.

I hold no interest in the properties or securities of Zicton Gold Limited, or affiliates thereof, nor do I expect to receive any, directly or indirectly.

The report on the Lumby Property, Vernon Mining Division, B.C. is based on an examination by the writer July 4 - 13, 1987.

*Alfred R. Allen*

ALLEN GEOLOGICAL ENGINEERING LTD.  
#702-2025 Bellevue Avenue  
West Vancouver, B.C.  
V7V 1B9

September 16, 1988

The British Columbia  
Securities Commission  
Vancouver, B.C.

Dear Sirs:

**Re: Zicton Gold Limited**

I hereby consent to the use of my report dated September 15, 1988, on the B.S.-3 Mineral Claim in the Vernon Mining Division, British Columbia in any prospectus or statement of material facts or other material to be filed with the British Columbia Securities Commission or the Vancouver Stock Exchange by Zicton Gold Limited.

Yours truly,

ALLEN GEOLOGICAL ENGINEERING LTD.

Per Alfred R. Allen, P. Eng.  
Alfred R. Allen



CENOZOIC

21

*Glacial, lacustrine, and fluvial gravel, sand, silt, and clay*

**TERTIARY**

OLIGOCENE OR MIOCENE  
KAMLOOPS GROUP

20

*Basaltic lava and flow breccia; minor rhyolitic lava and breccia; local sandstone, shale, conglomerate, coal*

**CRETACEOUS OR TERTIARY**

19

*Pink to red syenite and quartz syenite; pink and white mottled granite*

**JURASSIC AND/OR CRETACEOUS  
COAST INTRUSIONS**

18

*Granite, granodiorite and allied rocks*

**TRIASSIC  
UPPER TRIASSIC**

NICOLA GROUP

17

*Andesite; minor basalt; some limestone and conglomerate*

**(?) LOWER AND/OR UPPER TRIASSIC  
SLOCAN GROUP**

16

*Slate, quartzite, limestone, phyllite, mica schist; may be in part equivalent to 17*

MESOZOIC

**CARBONIFEROUS (?) AND PERMIAN  
CACHE CREEK GROUP (13-15)**

15

*DIVISION C: mainly limestone; minor argillite, quartzite, and andesite lava, breccia, and tuff*

14

*DIVISION B: mainly andesite lava and tuff; minor argillite, quartzite and limestone*

13

*DIVISION A: mainly argillite*

PALÆOZOIC

**WINDERMERE (?) OR EARLY PALÆOZOIC  
LADFAIR SERIES**

12

*Argillite, phyllite, schist, quartzite, limestone, conglomerate*

**WINDERMERE (?) OR CAMBRIAN**

11

*BADSHOT FORMATION limestone and marble; minor argillite*

**WINDERMERE OR (?) CAMBRIAN  
HAMILL SERIES**

10

*Quartzite, staurolite schist, argillite, phyllite, minor limestone*

**WINDERMERE OR EARLIER**

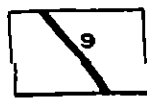
9

*OLD DAVE INTRUSIONS. serpentized, ultramafic dykes*

PROTEROZOIC AND/OR PALÆOZOIC

PROTERO

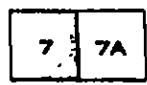
WINDERMERE OR EARLIER



9 OLD DAVE INTRUSIONS. *serpentinized, ultramafic dykes*

S H U S W A P T E R R A N E

ARCHÆAN OR LATER



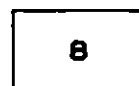
MOUNT IDA GROUP (1-7)  
 EAGLE BAY FORMATION *chlorite and sericite schist, slate, limestone, quartzite, minor conglomerate*  
 7A. Predominantly limestone



SICAMOUS FORMATION: *flaggy limestone, sericite schist, graphite schist*



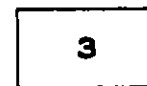
MARA FORMATION: *argillite, slate, sericite and chlorite schist, limestone*



CHAPPERON GROUP  
*Argillite, chlorite schist, mica schist, quartzite, limestone. May be equivalent to Mount Ida group, in part*



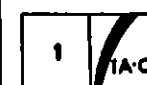
TSALKOM FORMATION. *green andesite and agglomerate, chlorite schist, slate*



SILVER CREEK FORMATION: *slate, sericite schist, garnetiferous quartz-mica schist*



CHASE FORMATION *quartzite calcareous quartzite, garnetiferous quartz-mica schist*



MONASHEE GROUP  
 1. *Granitoid gneiss, augen gneiss, mica-sillimanite-garnet schist, quartzite, marble, hornblende gneiss, slate phyllite*  
 1A. Limestone  
 1B. Quartzite  
 1C. Hornblende gneiss

- Bedding (inclined, vertical, horizontal).....
- Foliation (inclined, vertical, horizontal).....
- Lineation (plunging and horizontal).....

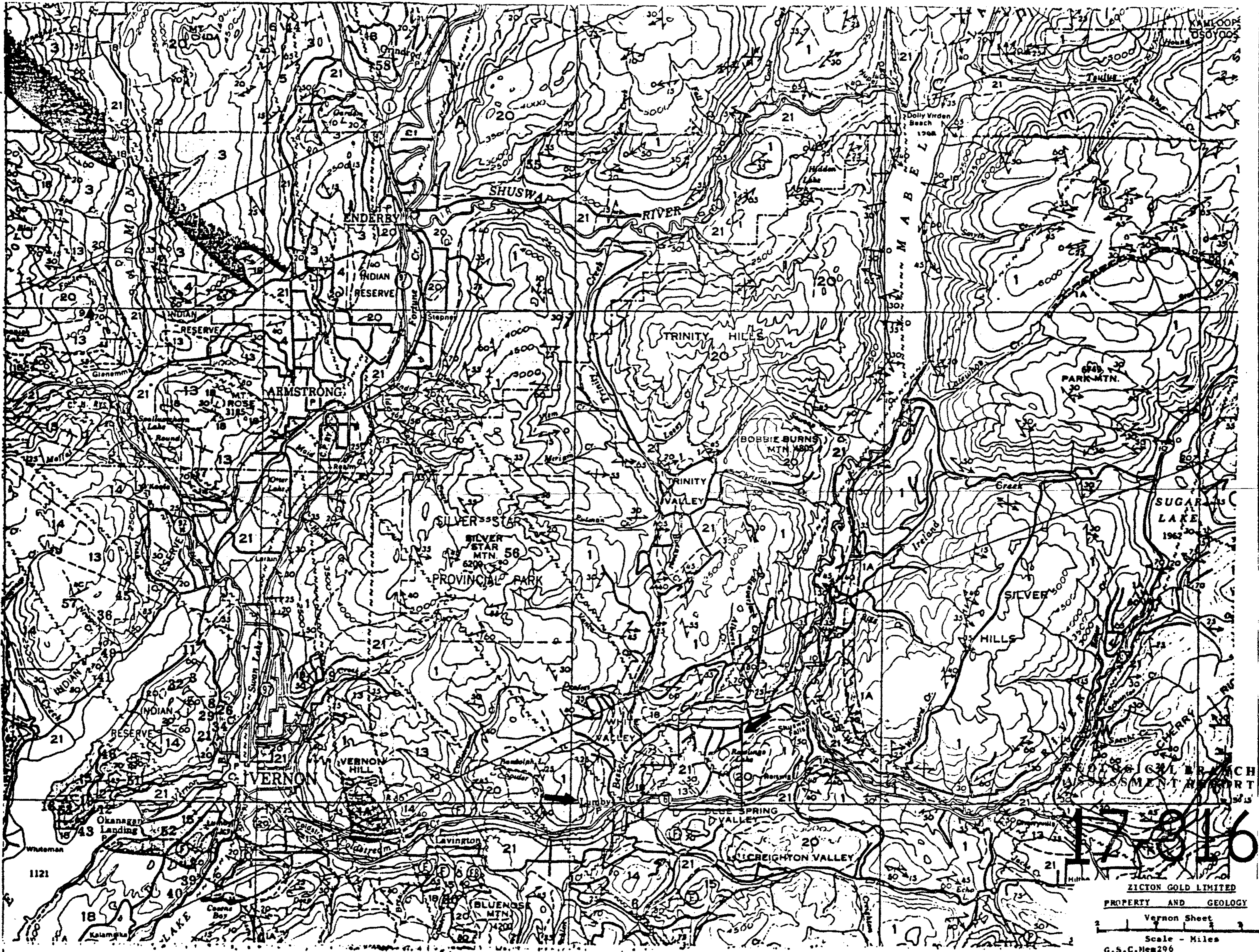
BEDDING AND FOLIATION WITH LINEATION

- |   | Bedding | Foliation |
|---|---------|-----------|
| Inclined (with plunging lineation).....                 |         |           |
| Inclined (with two plunging lineations).....            |         |           |
| Inclined (with horizontal lineation).....               |         |           |
| Vertical (with horizontal lineation).....               |         |           |
| Inclined (with horizontal and plunging lineations)..... |         |           |
| Horizontal (with one horizontal lineation).....         |         |           |
| Horizontal (with two horizontal lineations).....        |         |           |
| Inclined (lineation directly down dip).....             |         |           |
| Fault (approximate, assumed).....                       |         |           |
| Anticline (upright, overturned).....                    |         |           |
| Syncline (upright, overturned).....                     |         |           |
| Fossil locality.....                                    |         |           |
| Mining property.....                                    |         |           |
| Mineral occurrence.....                                 |         |           |

Geology by H.M.A. Rice, 1945, 1946, and by A.G. Jones, 1947-1951

To accompany G.S.C. Memoir 296 by A.G. Jones

Cartography by the Geological Survey of Canada, 1959



**17816**

ZICTON GOLD LIMITED  
PROPERTY AND GEOLOGY

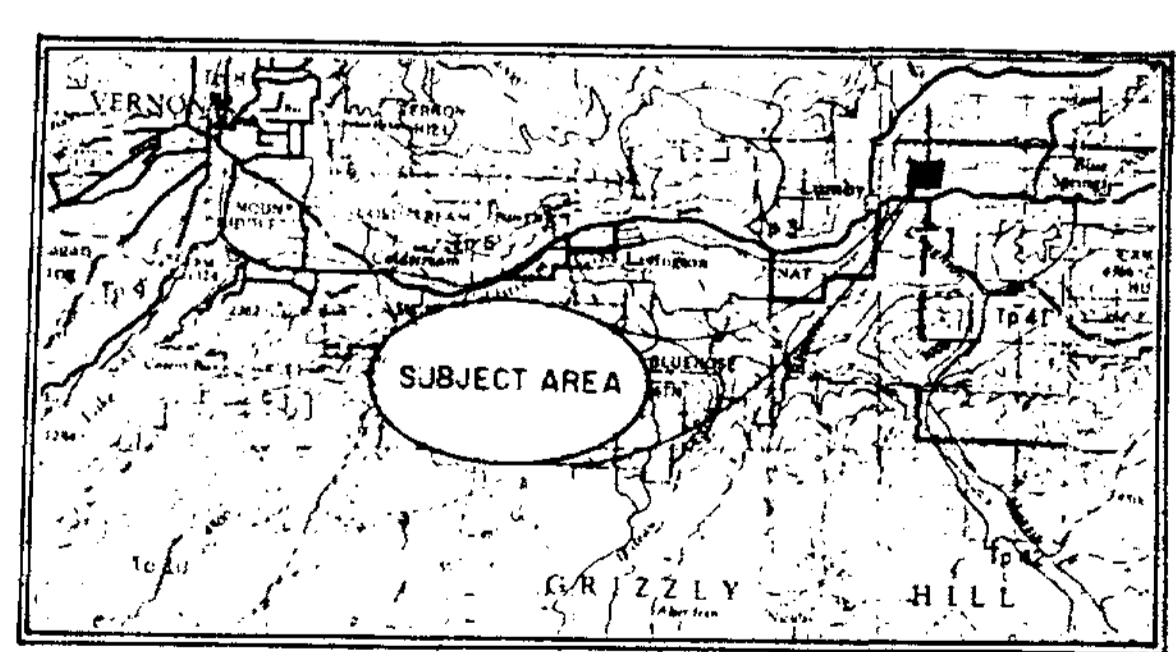
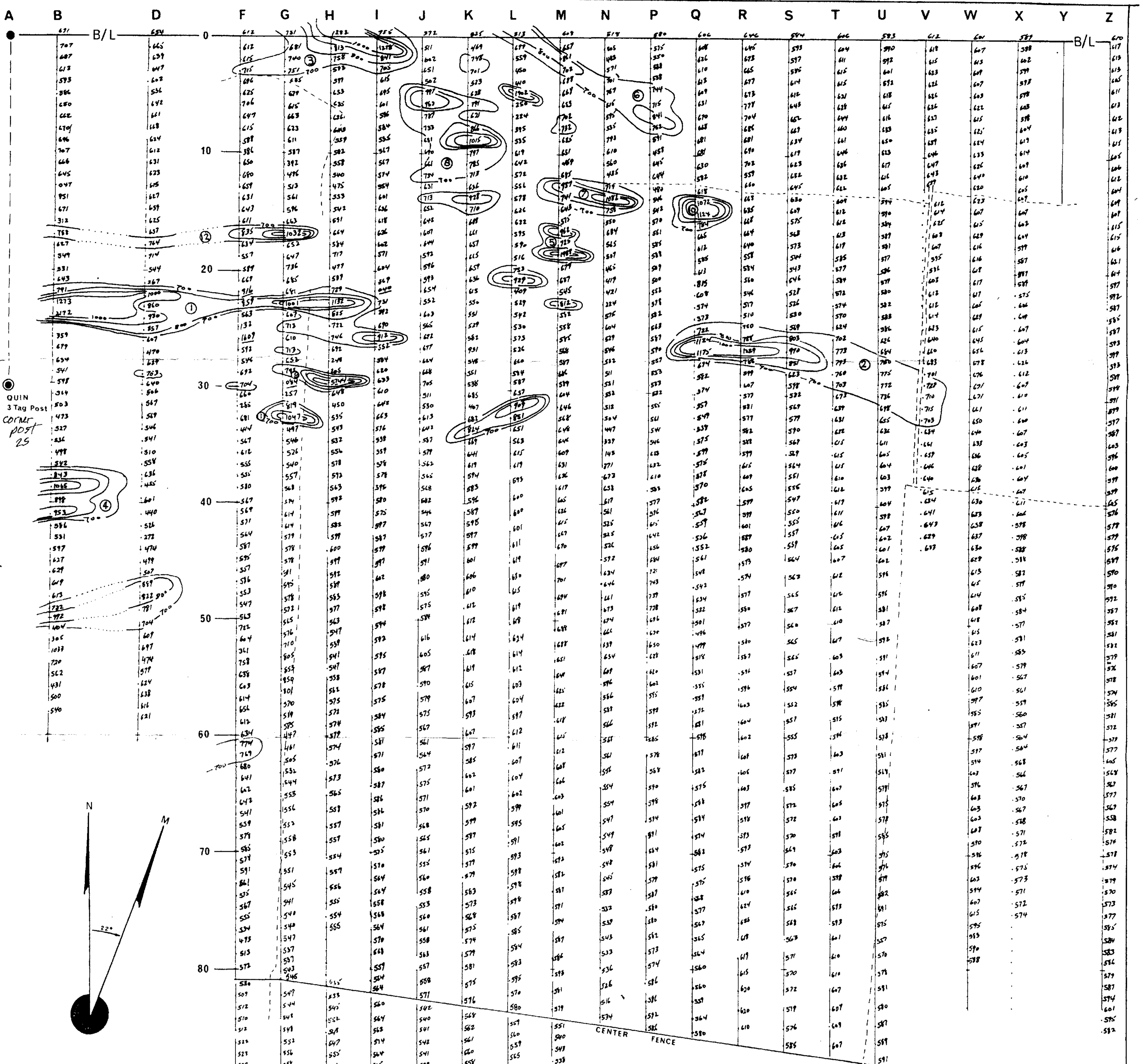
Vernon Sheet  
Scale - Miles

G.S.C. Mem 296

May/57 Allen Geological Eng.

No. 5 For *Alfred R. Allen*, P. Eng.

*Alfred R. Allen*

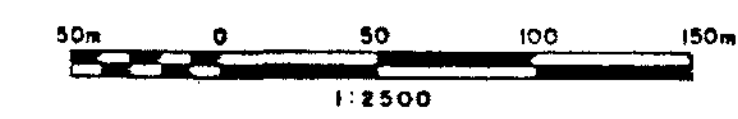


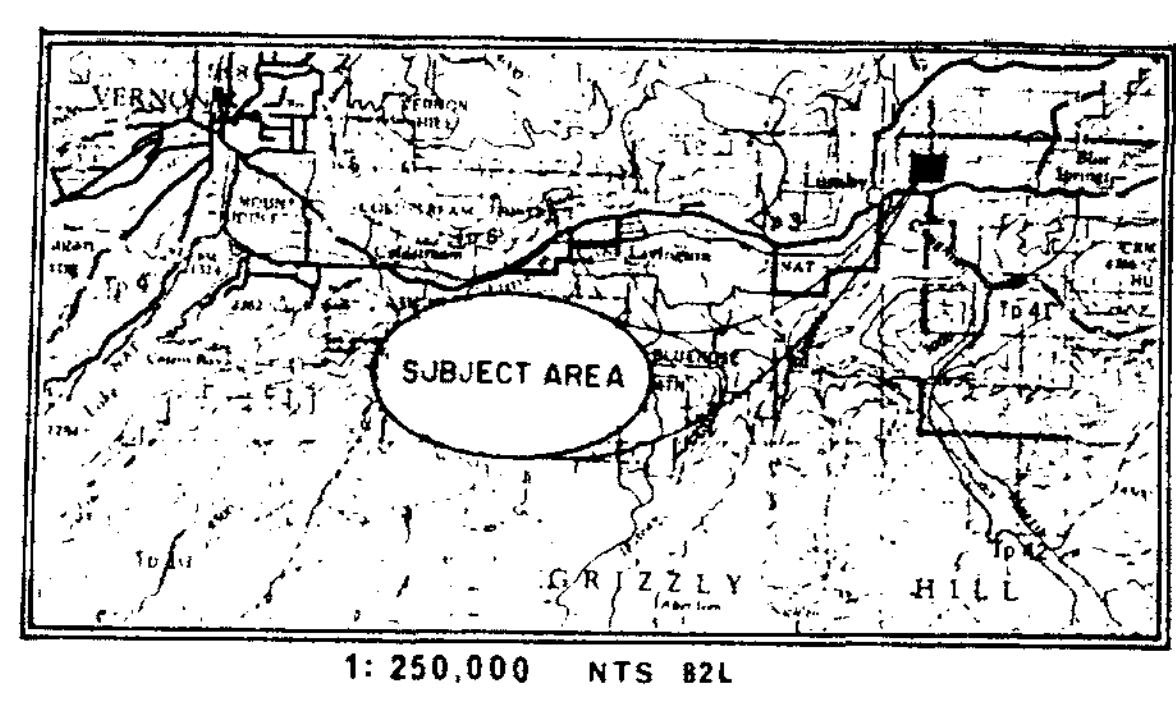
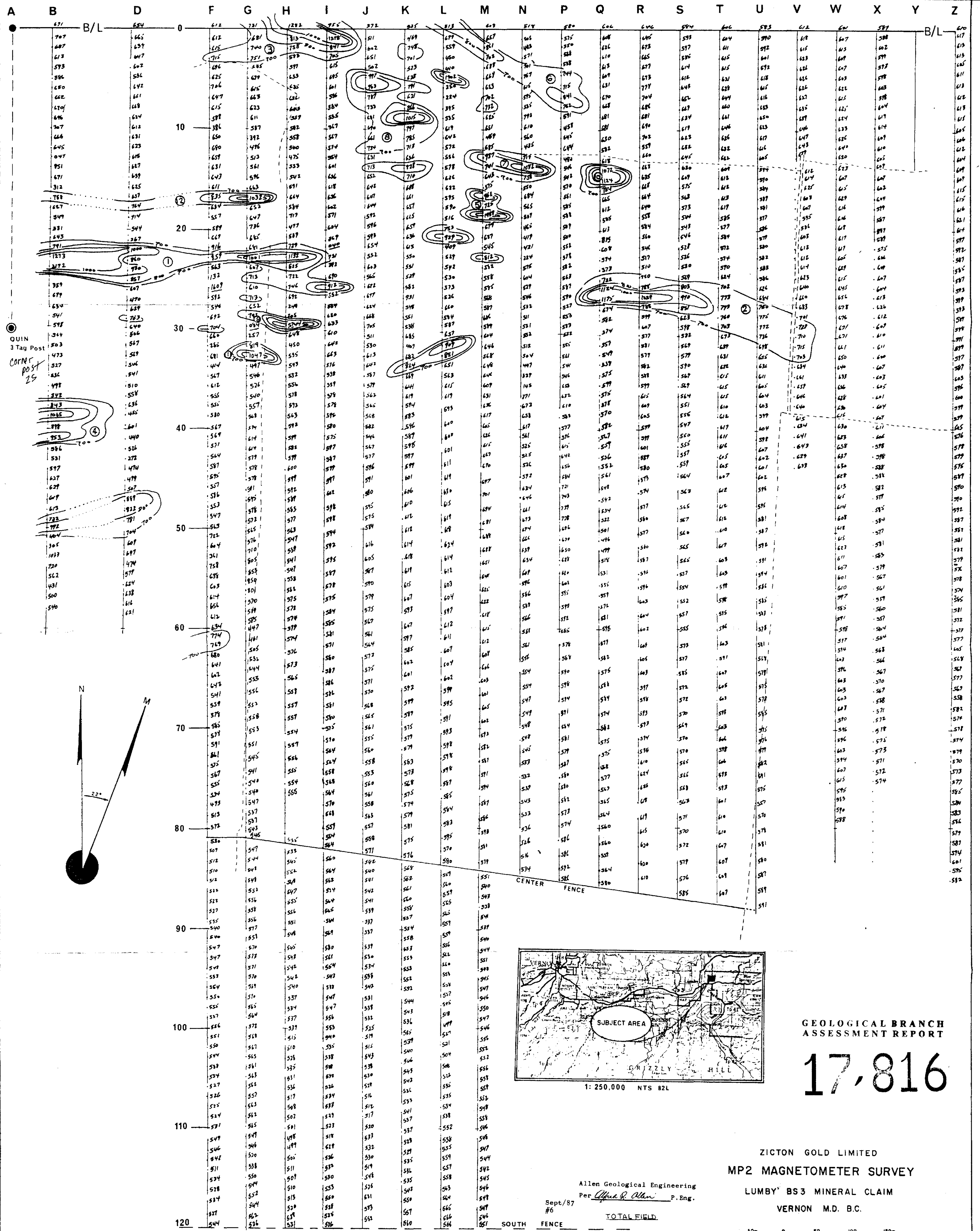
GEOLOGICAL BRANCH  
ASSESSMENT REPORT

17,816

ZICTON GOLD LIMITED  
MP2 MAGNETOMETER SURVEY  
LUMBY BS3 MINERAL CLAIM  
VERNON M.D. B.C.

Allen Geological Engineering  
Per *Alfred R. Allen* P. Eng.  
Sept/87 #6  
TOTAL FIELD  
*Alfred R. Allen*





GEOLOGICAL BRANCH  
ASSESSMENT REPORT

17,816

ZICTON GOLD LIMITED  
MP2 MAGNETOMETER SURVEY

LUMBY BS3 MINERAL CLAIM  
VERNON M.D. B.C.

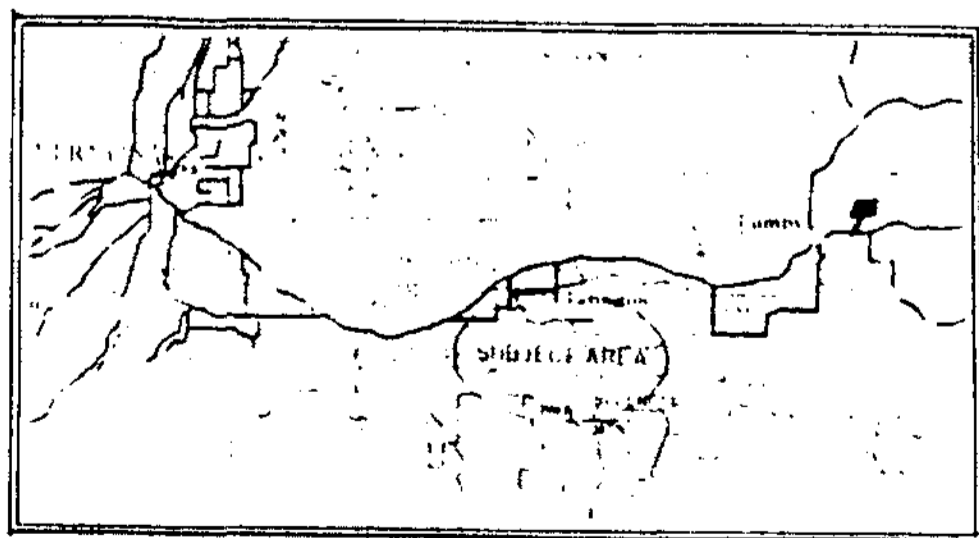
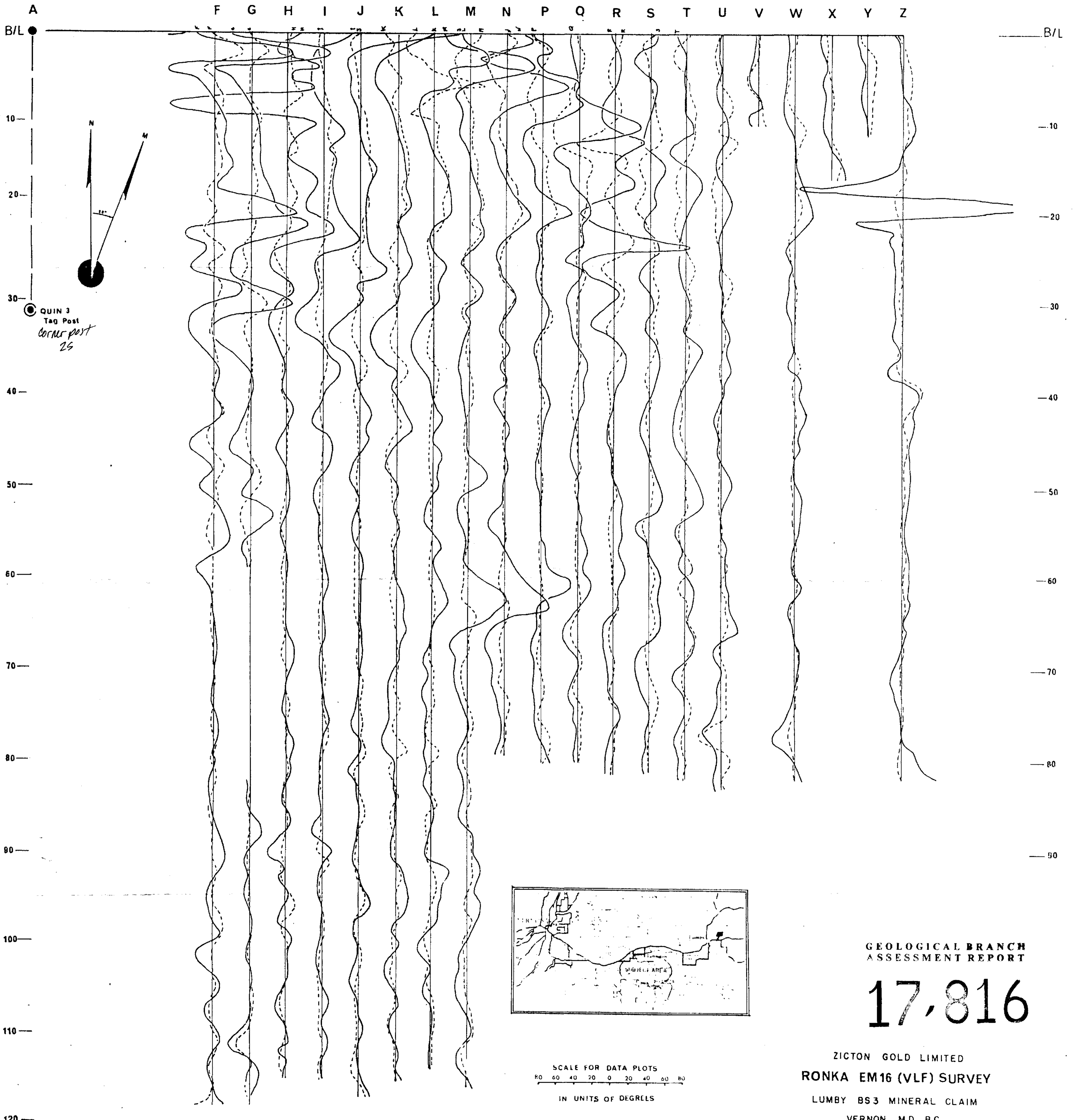
Allen Geological Engineering  
Per Alfred R. Allen P. Eng.

Sept/87  
#6

TOTAL FIELD

SOUTH FENCE





SCALE FOR DATA PLOTS  
 80 60 40 20 0 20 40 60 80  
 IN UNITS OF DEGREES

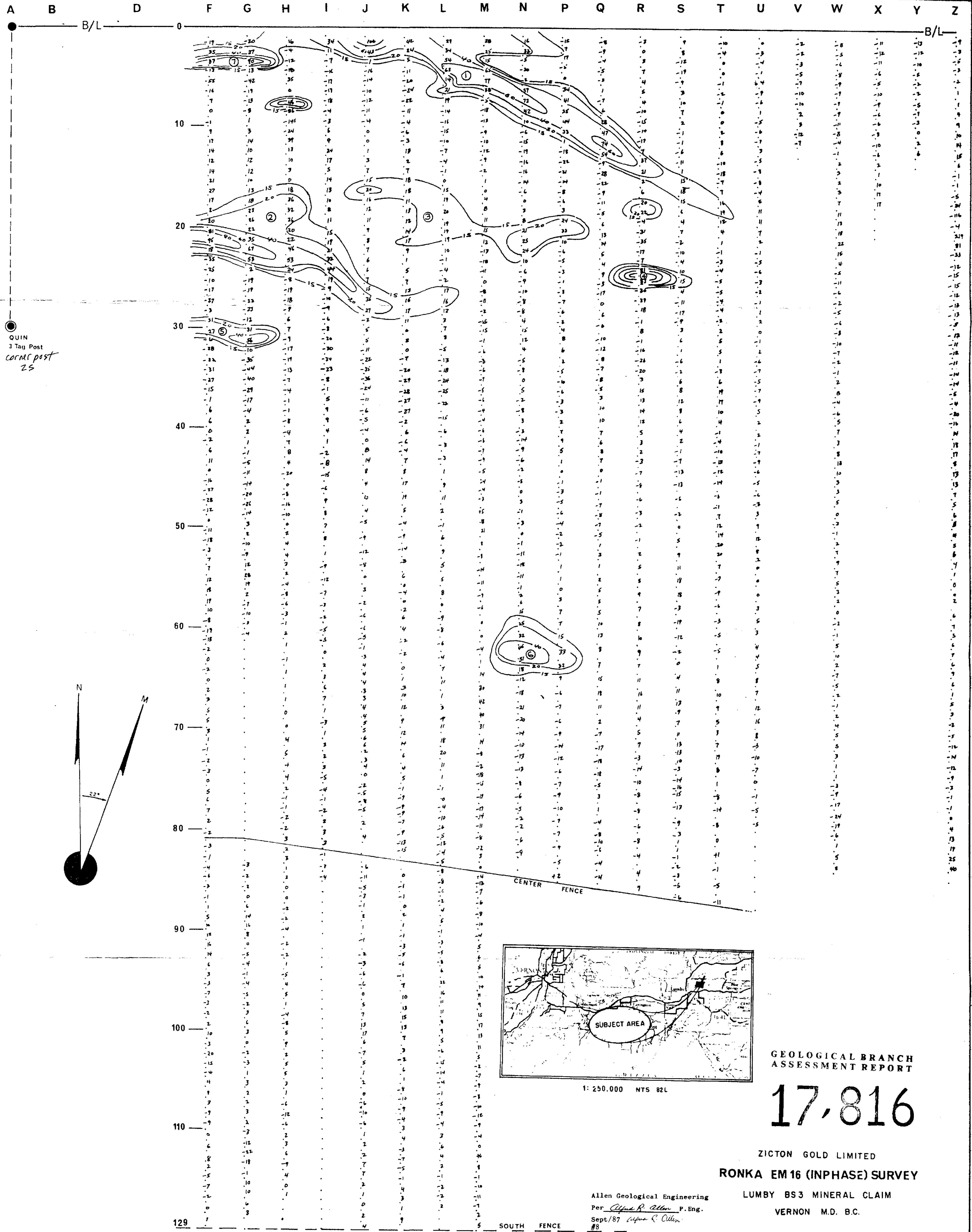
0 30 60 90 120  
 PLAN SCALE 1:3000

GEOLOGICAL BRANCH  
 ASSESSMENT REPORT

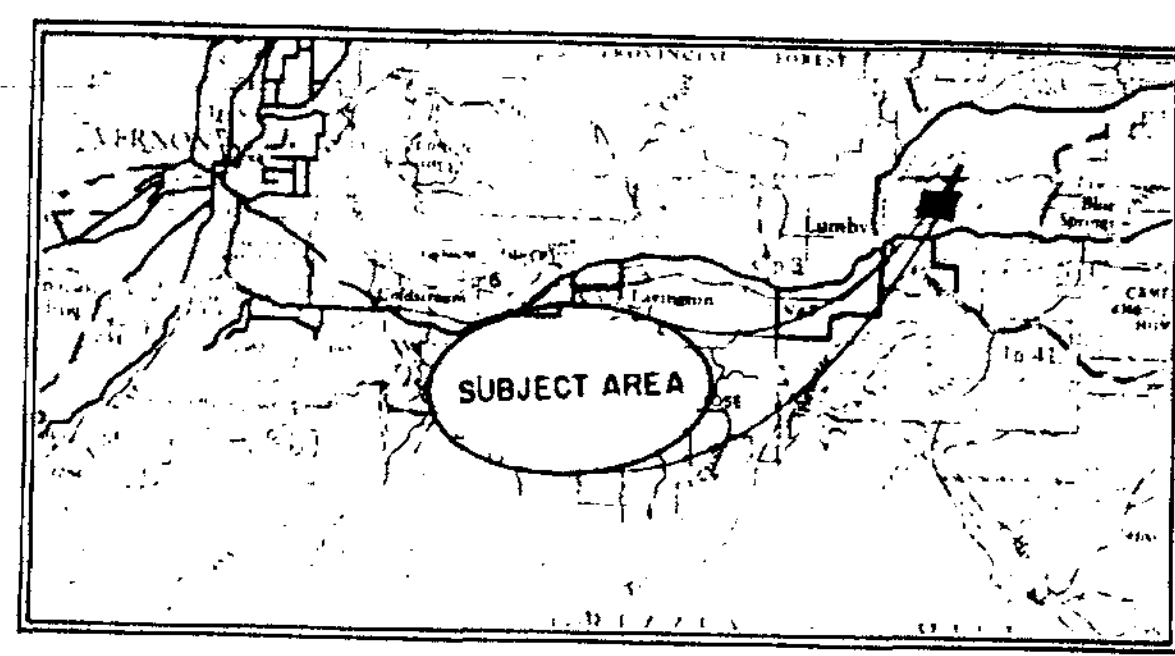
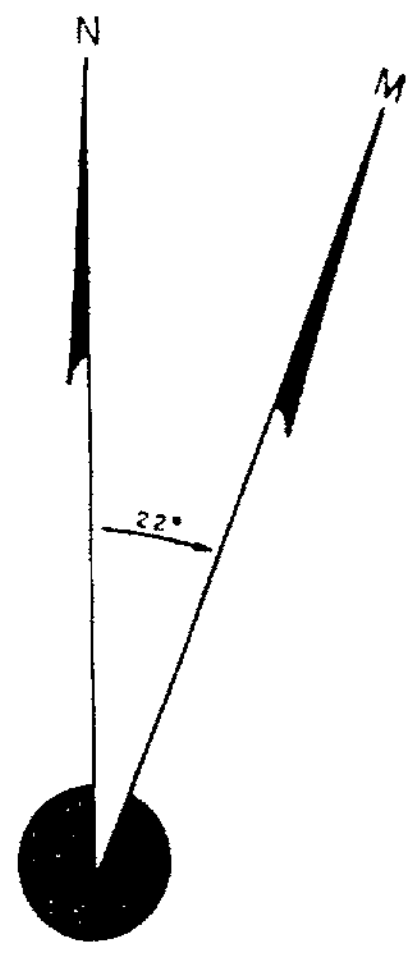
17,816

ZICTON GOLD LIMITED  
 RONKA EM16 (VLF) SURVEY  
 LUMBY BS3 MINERAL CLAIM  
 VERNON M.D. B.C.

Allen Geological Engineering  
 Per *Alfred R. Allen* P. Eng.  
 Sept/87/88  
 #7 *Alfred R. Allen*



QUIN  
 3 Tag Post  
 cornet post  
 25



1: 250,000 NTS 82L

GEOLOGICAL BRANCH  
ASSESSMENT REPORT

17,816

ZICTON GOLD LIMITED  
RONKA EM 16 (INPHASE) SURVEY

LUMBY BS3 MINERAL CLAIM  
VERNON M.D. B.C.

Allen Geological Engineering  
Per *Allen R. Allen* P.Eng.  
Sept/87 *Allen R. Allen*  
#8

ANNAPOLIS 21.4 KHZ

